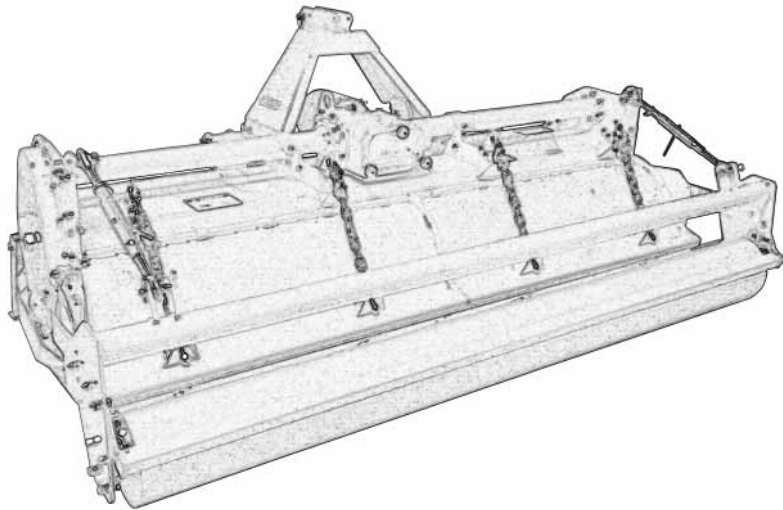


GEARMORE INC.

REAR ROLLER

FOR

S255 ROTARY TILLER



**Operation, Assembly
& Parts Manual**

January 2010

TABLE OF CONTENTS

| SECTION | DESCRIPTION | PAGE |
|------------|---------------------------------------|--------------|
| 1 | Operation & Assembly | 1 - 2 |
| 1.1 | Operation | 1 |
| 1.2 | Assembly | 2 |
| 1.3 | Assembly Instructions | 3 |
| 2 | Parts | 4 - 5 |
| 2.1 | Parts Diagram | 4 |
| 2.2 | Part Numbers | 5 |
| 3 | Limited Warranty | 6 |

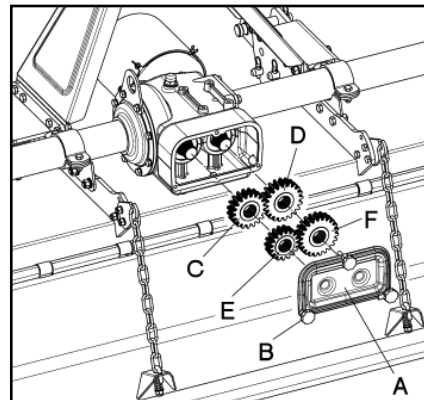
1.1 OPERATION

The basic use for this implement is to till in orchard wood chips. Then the rear roller smooths out and slightly compacts the soil. The usual tilling depth for this operation is 2 to 3 inches. The tiller works best for this operation when the rotor speed is set at the maximum R.P.M. of 260. To set the maximum speed the **17 tooth gear** is to be in **position C**. The **23 tooth gear** is to be placed in **position D**.

SPEED GEAR SETUP

The Series S gearbox is provided with two pair of gears. By changing their relative position 4 different rotor speeds are achieved. Choose the desired rotor speed and follow the instructions below:

- 1) Drain the oil from the gearbox.
- 2) Remove the cover A unscrewing the lobe knobs B (See picture).



- 3) Change the position of the gears C and D according to the following table:

| | C GEAR | D GEAR | ROTOR SPEED |
|---|----------|----------|-------------|
| 1 | 23 Teeth | 17 Teeth | 145 R.P.M. |
| 2 | 21 Teeth | 19 Teeth | 175 R.P.M. |
| 3 | 19 Teeth | 21 Teeth | 215 R.P.M. |
| 4 | 17 Teeth | 23 Teeth | 260 R.P.M. |

- 4) Fix the remaining gears E and F on the suitable pins on the internal face of the cover.
- 5) Put back the cover in its position, tighten the screws, and fill with oil.

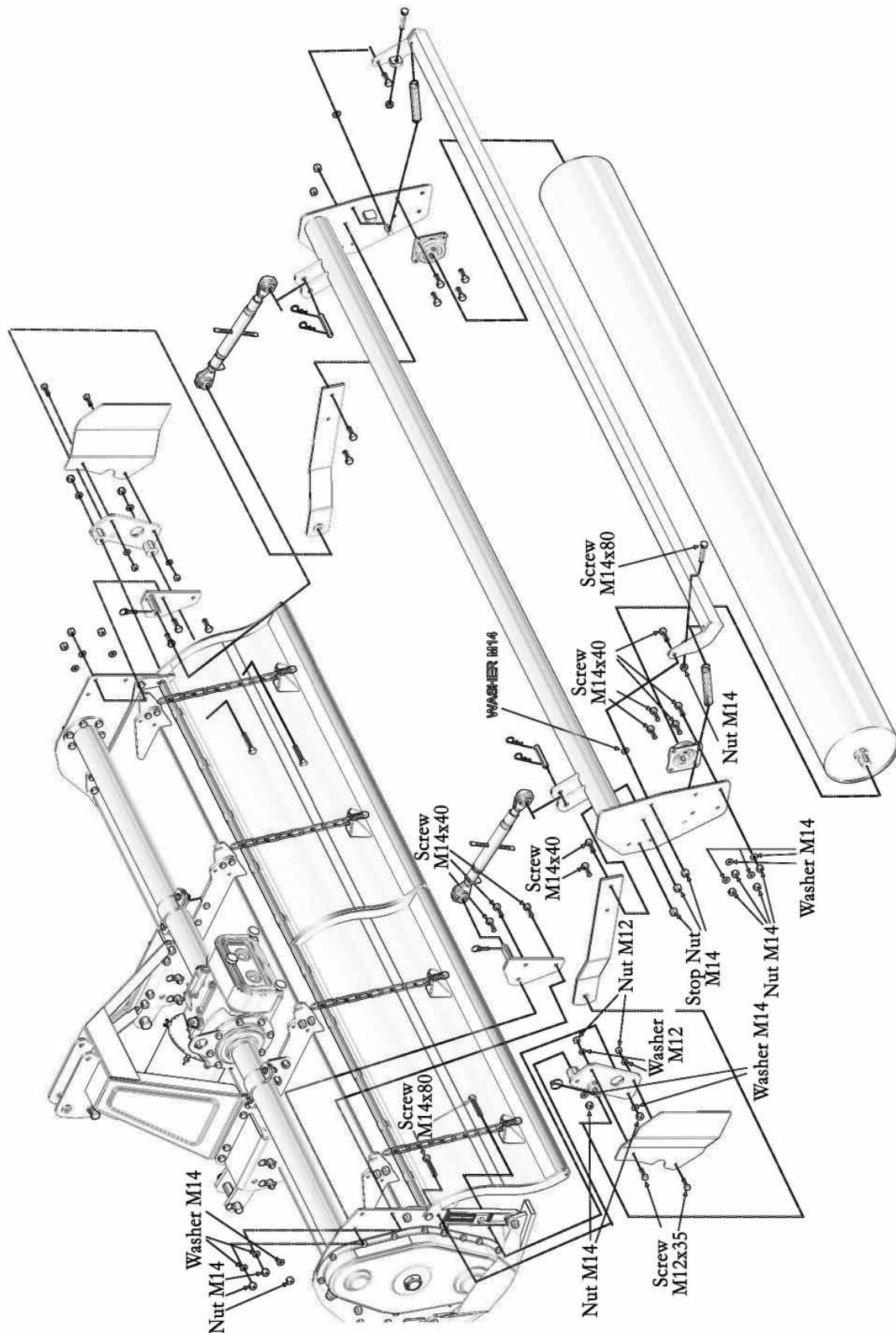
Special Note: All the gears are for 540 R.P.M. tractors. For 1000 R.P.M. tractors you must order different gears from us.

For standard tilling operations, the maximum depth is 8 inches. It may be best to unbolt the rear roller for this operation.

To assemble the rear roller use the existing holes in the tiller. It will not be necessary to drill any holes.

The rear roller attachment is also supplied with two special plates. These plates bolt-up between the tiller side plate and the tailboard. The plates are to prevent soil from being thrown out, which could cause "ridging".

1.2 ASSEMBLING ROLLER ON S255 ROTARY TILLER



Use same hardware for both sides of the tiller.

1.3 ASSEMBLY INSTRUCTIONS

- STEP 1 -** Adjust both skids up for deepest position of tines (*Fig. 1*).
- STEP 2 -** Mount RH/LH adjustment link support plate (*Ref. A - Fig. 2*) to upper side plate of tiller.
- STEP 3 -** Mount RH/LH deflector plate (*Ref. B - Fig. 3*) to tiller side plates.
- STEP 4 -** Mount roller frame (*Ref. C - Fig. 4*) to roller arms (*Ref. D - Fig. 4*).
- STEP 5 -** Mount adjustment arms (*Ref. E - Fig. 5*) to roller frame (*Ref. C*).
- STEP 6 -** Adjust roller to desired depth.

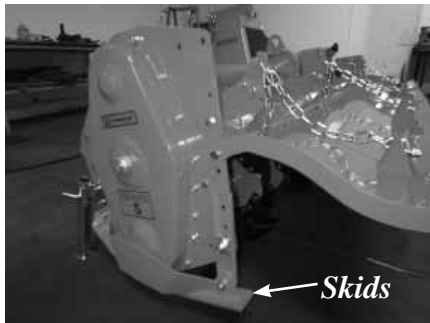


Fig. 1

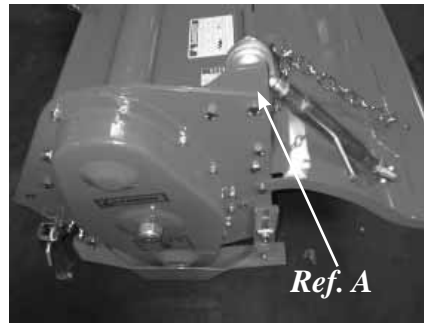


Fig. 2

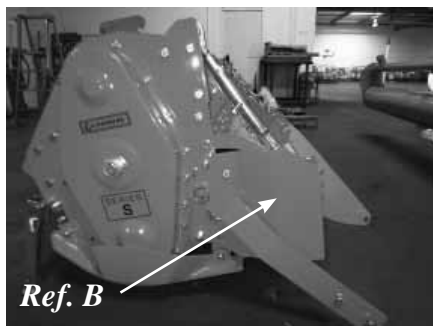


Fig. 3

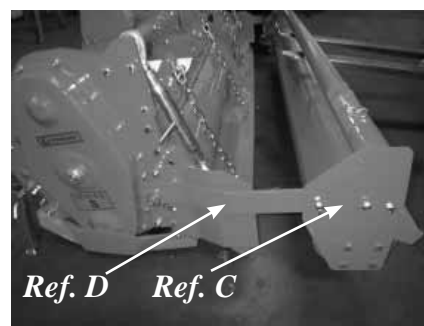


Fig. 4

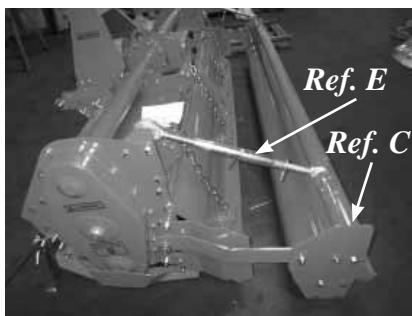
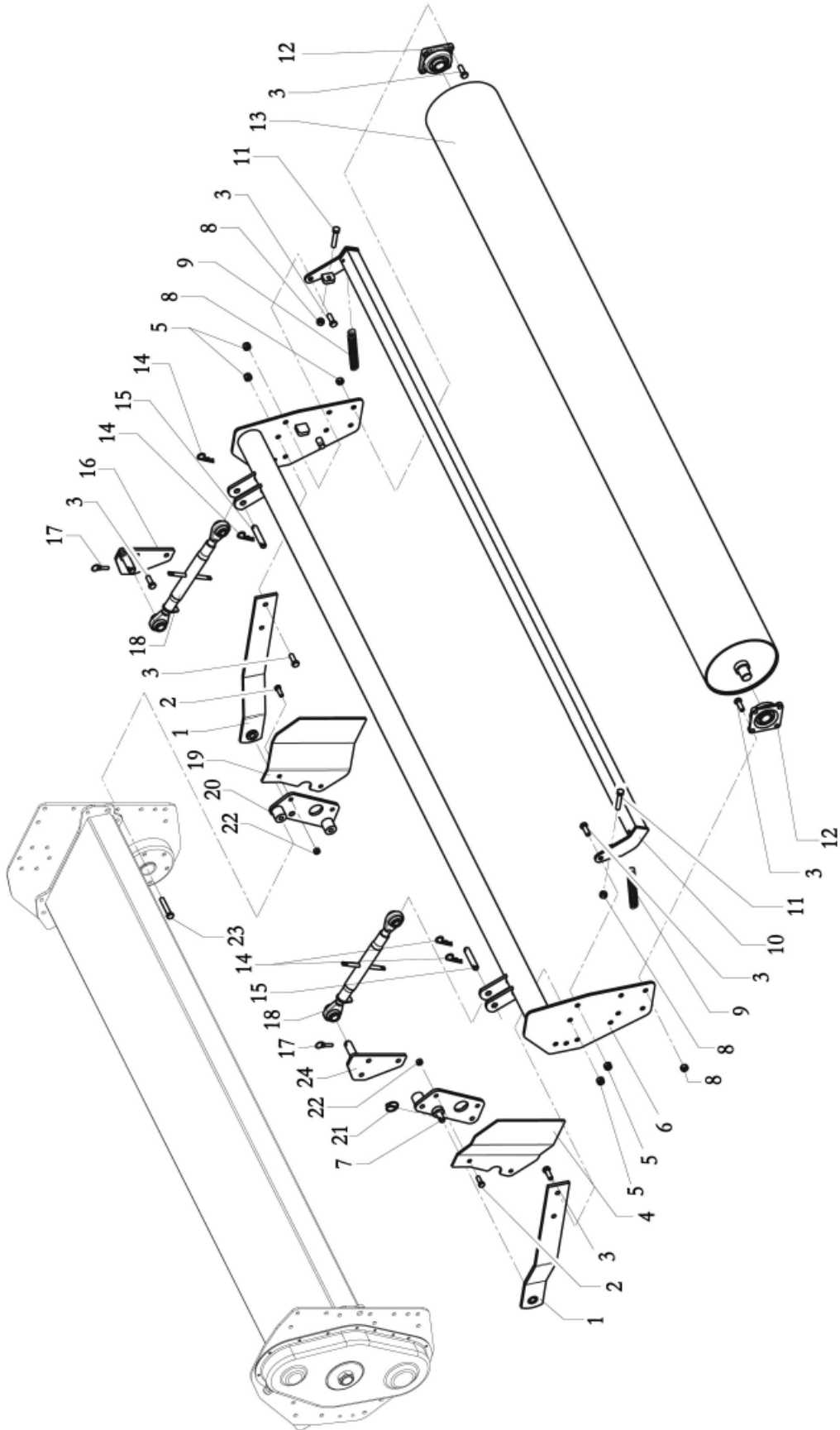


Fig. 5

2.1 S255 REAR ROLLER PARTS



2.2 PART NUMBERS

| <u>REF. #</u> | <u>QTY.</u> | <u>PART NO.</u> | <u>DESCRIPTION</u> |
|---------------|-------------|-----------------|-------------------------|
| 1 | 1 | 4004495 | Roller Arm |
| 2 | 4 | 3021112035 | Screw UNI 5739 M12 x 35 |
| 3 | 20 | 3021114040 | Screw UNI 5739 M14 x 40 |
| 4 | 1 | 4134403 | Left Deflector |
| 5 | 2 | 3444101014 | Nut DIN980 M14 |
| 6 | 1 | 4004487 | Roller Frame |
| 7 | 1 | 4004488 | Roller Support |
| 8 | 2 | 3414101014 | Nut UNI 5587 M14 |
| 9 | 2 | 4211802 | Spring |
| 10 | 1 | 4004494 | Roller Scraper |
| 11 | 2 | 3021114080 | Screw UNI 5739 M14 x 8 |
| 12 | 2 | 2000035 | UCF/207 Support |
| 13 | 1 | 4004482 | Roller |
| 14 | 4 | 6351004 | Split Pin D.4 |
| 15 | 2 | 4304003 | Pin |
| 16 | 1 | 4004028 | Coupling Plate |
| 17 | 2 | 6350010 | Split Pin D.10 |
| 18 | 2 | 6391320 | Arm TP19.25/320 |
| 19 | 1 | 4134404 | Right Deflector |
| 20 | 1 | 4004489 | Right Roller Support |
| 21 | 2 | 6331046 | Snap Plug |
| 22 | 4 | 3444101012 | Nut DIN980 M12 |
| 23 | 6 | 3011114080 | Screw UNI 5737 M14 x 8 |
| 24 | 1 | 4004029 | Coupling Plate |

3 LIMITED WARRANTY



GEARMORE, INC., warrants each new Gearmore product to be free from defects in material and workmanship for a period of twelve (12) months from date of purchase to the original purchaser. This warranty shall not apply to implements or parts that have been subject to misuse, negligence, accident, or that have been altered in any way.

Our obligation shall be limited to repairing or replacement of any part, provided that such part is returned within thirty (30) days from date of failure to Gearmore through the dealer from whom the purchase was made, transportation charges prepaid.

This warranty shall not be interpreted to render us liable for injury or damages of any kind or nature, direct, consequential or contingent, to person or property. This warranty does not extend to loss of crops, loss because of delay in harvesting or any other expenses, for any other reasons.

Gearmore in no way warrants engines, tires, or other trade accessories, since these items are warranted separately by these respective manufacturers.

Gearmore reserves the right to make improvements in design or changes in specification at any time, without incurring any obligations to owners or units previously sold.

GEARMORE, INC.
13477 Benson Ave.
Chino, CA 91710

Always refer to and heed machine operating warning decals on machine.

The serial number of this product is stored in our computer database, thus submitting a warranty registration card is not required.

CUSTOMER INFORMATION

NAME: _____

PURCHASED FROM: _____

DATE OF PURCHASE: _____

MODEL NUMBER: _____

SERIAL NUMBER: _____