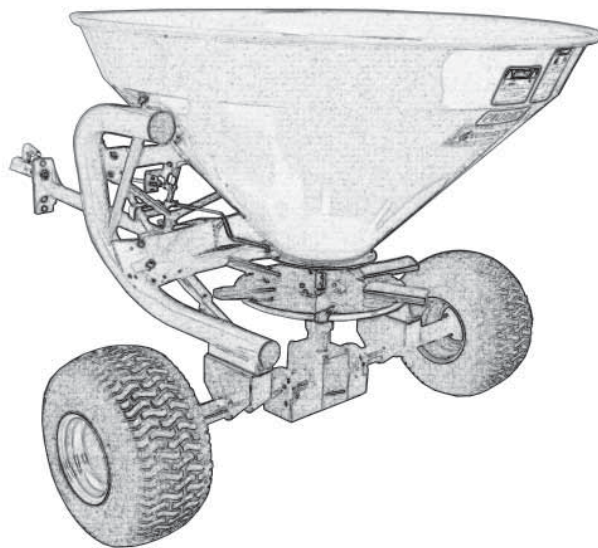


GEARMORE INC.

SEEDER / SPREADERS TRAILER MOUNTED



Assembly Manual For Model PTB560

April 2009

ASSEMBLY INSTRUCTIONS

STEP 1: *Bolt 12 x 30 - Qty. 8.* Fasten all the bolts to the wheels.

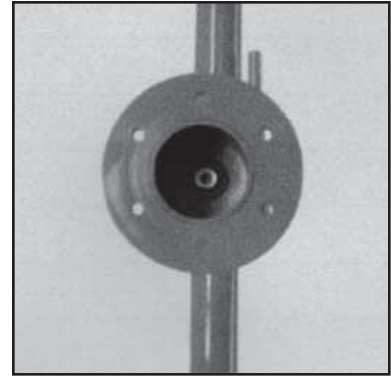
STEP 2: *Washer 12 x 35 x 5, key 6 x 6 x 25, self lock nut M12 - Qty. 1 each.* Assemble the bushing to the axle, as shown in the photos.



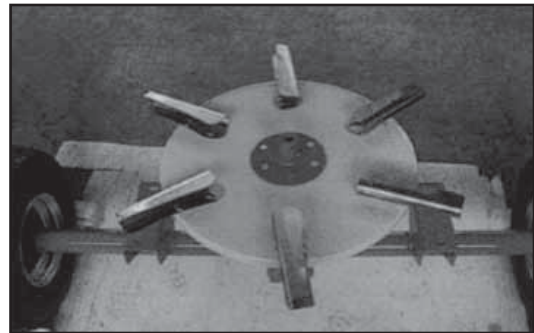
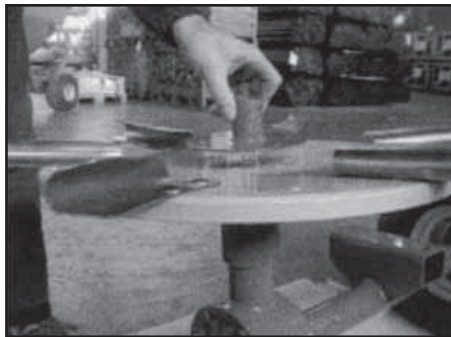
STEP 1



STEP 2

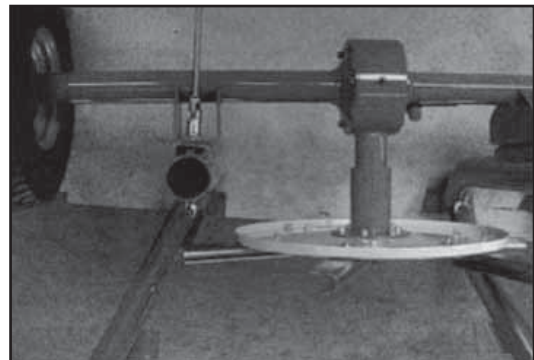


STEP 3: *Bolt 8 x 20 - Qty. 6, Washer 8 x 17 - Qty. 6, Nut M8 - Qty. 6.* Assemble the spreader disc on the bushing using bolts and nuts listed.



STEP 4: *Bolt 10 x 25 - Qty. 4, Washer 10 x 30 - Qty. 4.* Fasten the frame to the axle with the above mentioned screws and washers.

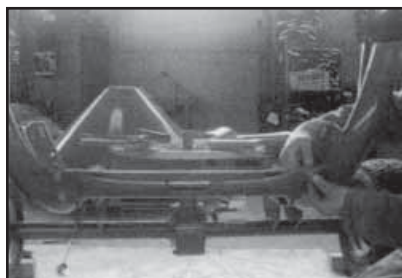
IMPORTANT: Do not tighten until final assembly.



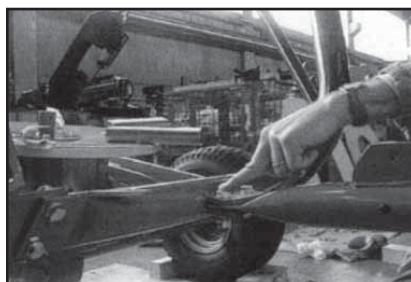
ASSEMBLY INSTRUCTIONS

STEP 5: *Bolt 10 x 25 - Qty. 4, Washer 10 x 20 - Qty. 8, Nut M10 - Qty. 4.* Apply the lower crossbar through the above mentioned bolts and nuts.
IMPORTANT: Do not tighten until final assembly.

STEP 6: *Bolt 10 x 35 - Qty. 2, Washer 10 x 20 - Qty. 4, Nut M10 - Qty. 2.* Fasten the support tongue to the lower crossbar using the listed bolts and nuts.



STEP 5



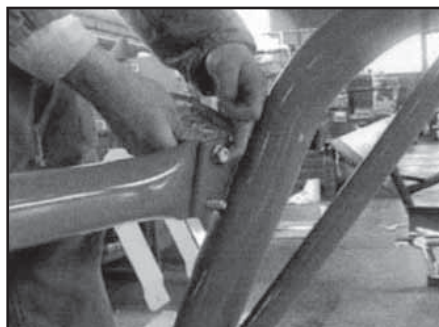
STEP 6

STEP 7: *Bolt 8 x 20 - Qty. 4, Washer 8 x 24 - Qty. 8, Nut M8 - Qty. 4.* Fasten the crankcase to the frame, as shown in the photos.

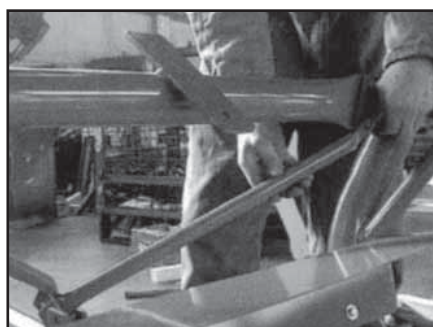


STEP 8: *Bolt 10 x 25 - Qty. 2, Bolt 10 x 35 - Qty. 2, Washer 10 x 20 - Qty. 8, Nut M10 - Qty. 4.* Fasten the upper crossbar with listed bolts and nuts. **IMPORTANT:** Do not tighten until final assembly.

STEP 9: *Bolt 10 x 50 - Qty. 1, Washer 10 x 20 - Qty. 2, Self lock nut M10 - Qty. 1.* Fasten all tie rods of the upper reinforcement, as shown in the photo. **IMPORTANT:** Bolts and nuts must not be tightened until the final assembly.



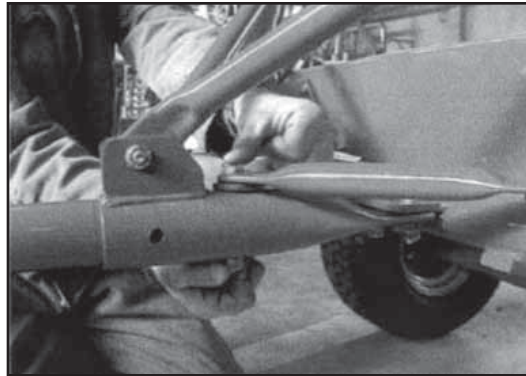
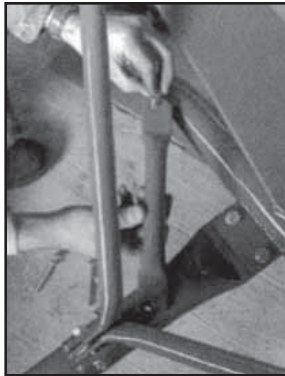
STEP 5



STEP 6

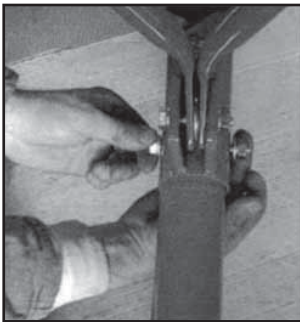
ASSEMBLY INSTRUCTIONS

STEP 10: *Bolt 10 x 25 - Qty. 2, Bolt 10 x 80 - Qty. 1, Washer 10 x 20 - Qty. 6, Nut M10 - Qty. 2.* Install all lower tie rods, as shown in the photos without tightening them.

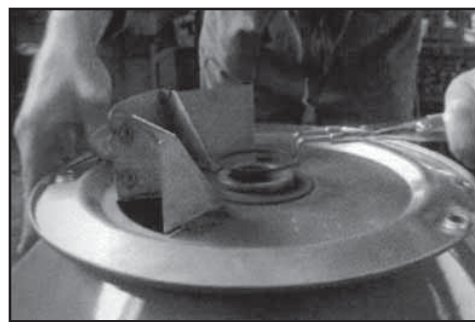


STEP 11: *Bolt 10 x 80 - Qty. 1, Washer 10 x 20 - Qty. 2, Self Lock Nut M10 - Qty. 1.* Secure the tube to the tongue, as shown in the photo.

STEP 12: *Shimming Washer 56 x 70 x 0.5 - Qty. 2, Crowned Washer 56 x 80 x 10 - Qty. 1.* Assemble the stainless steel disc, as per these photos.



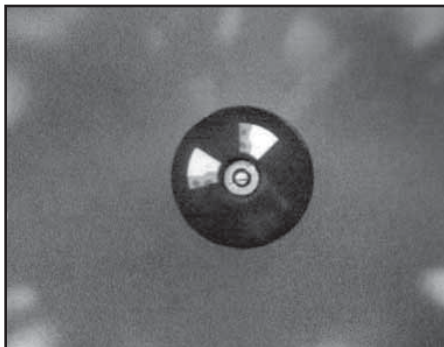
STEP 11



STEP 12

STEP 13: *Bolt 6 x 16 - Qty. 2, Washer 6 x 12 - Qty. 2.* Fasten snap ring inside the hopper using the above mentioned bolts and nuts.

STEP 14: *Pin 8 x 40 - Qty. 1, Pin 5 x 40 - Qty. 1.* Fasten the entrainer, as shown in the photo.



STEP 13



STEP 14

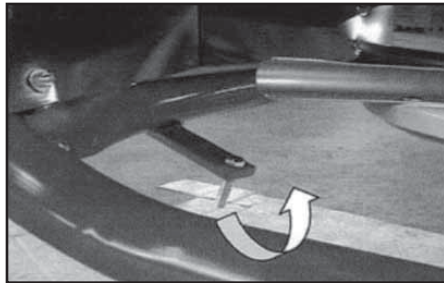
ASSEMBLY INSTRUCTIONS

STEP 15: *Bolt 10 x 20 TTQST - Qty. 6.* Fasten the hopper to the frame with the above mentioned screws.

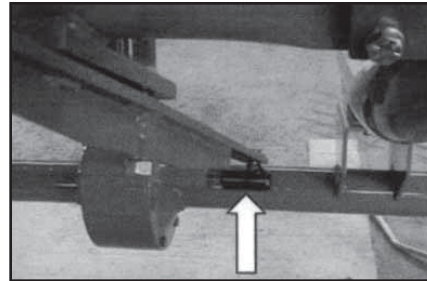


STEP 16: *Bolt 12 x 55 - Qty. 1.* Fasten the lever release with the above mentioned screw, but upside down compared with the photo.

STEP 17: *Bolt 10 x 30 - Qty. 1, Washer 10 x 20 - Qty. 1.* Secure the bushing as shown in the photo.



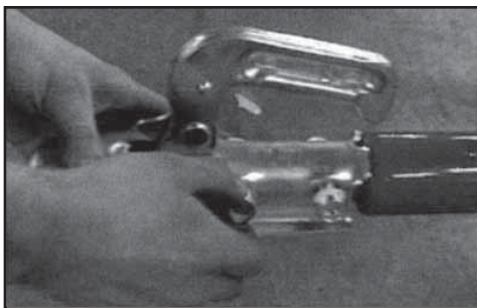
STEP 16



STEP 17

STEP 18: *Bolt 12 x 55 - Qty. 2, Washer 12 x 24 - Qty. 4, Self Lock Nut M12 - Qty. 2.* Fix the draught connector with the above mentioned bolts and nuts.

STEP 19: Secure the on-off bracket on Nut 10 x 50 existing yet.



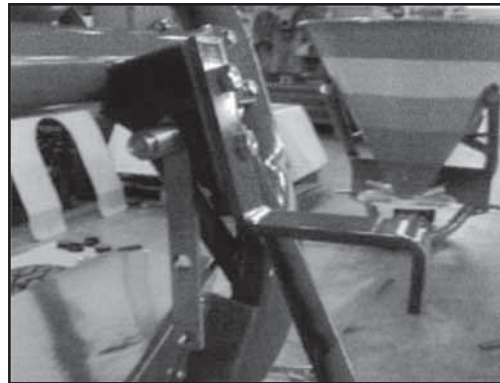
STEP 18



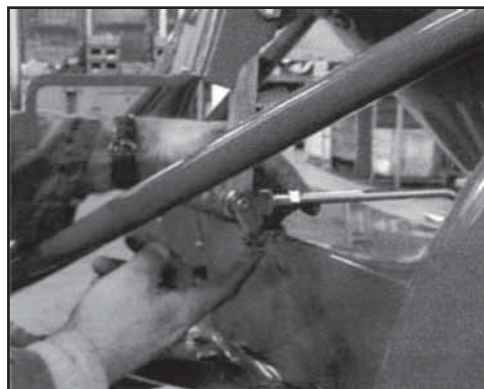
STEP 19

ASSEMBLY INSTRUCTIONS

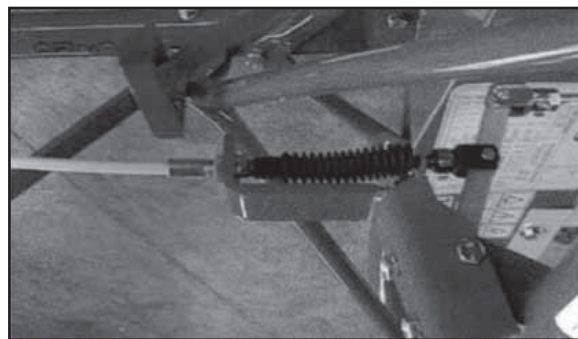
STEP 20: *Bolt 10 x 20 TTQST - Qty. 2, Washer 10 x 80 - Qty. 1, Self Lock Nut M10 - Qty. 1, Washer 10 x 20 - Qty. 3, Nylon Bushing - Qty. 1, Spring - Qty. 1.* Secure the support bracket as shown in the photos.



STEP 21: *R Pin mm.3 - Qty. 1.* Secure the tie rod to the adjustment disc through the R pin.



STEP 22: Connect the threaded part of the opening cable into the bracket hole and fix it with nut M12 from the opposite side of the bracket. Connect the fork to the opening lever as shown.



STEP 23: **IMPORTANT:** When the machine is totally assembled, please tighten all bolts and nuts.