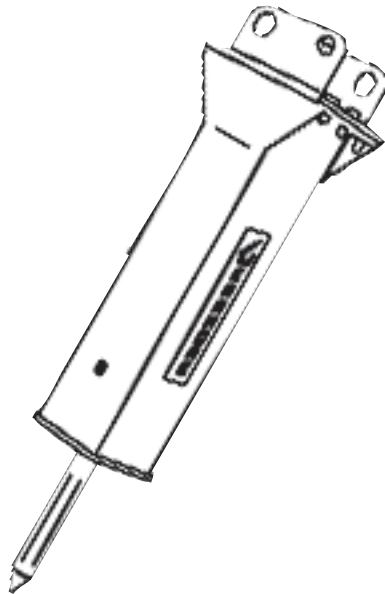


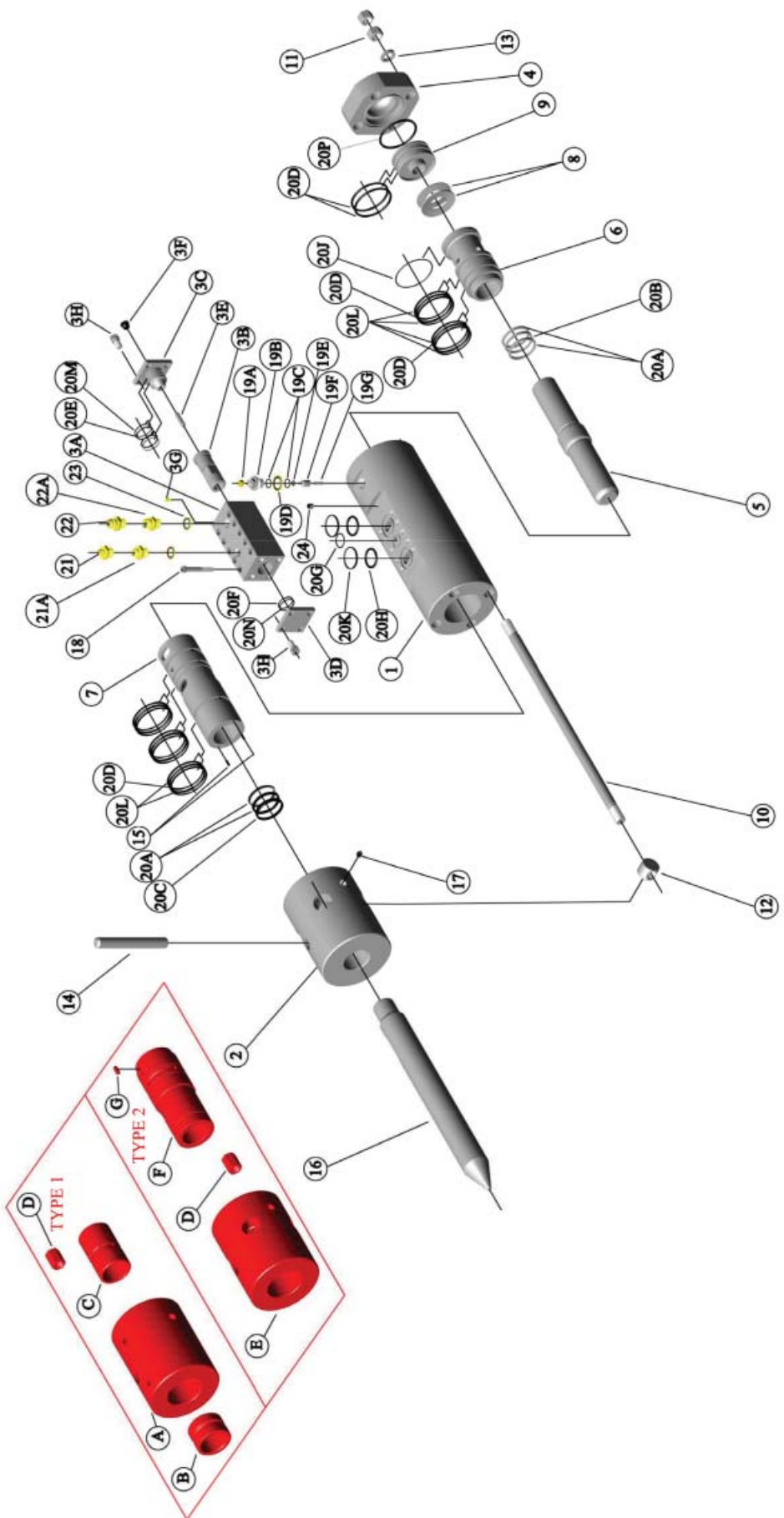


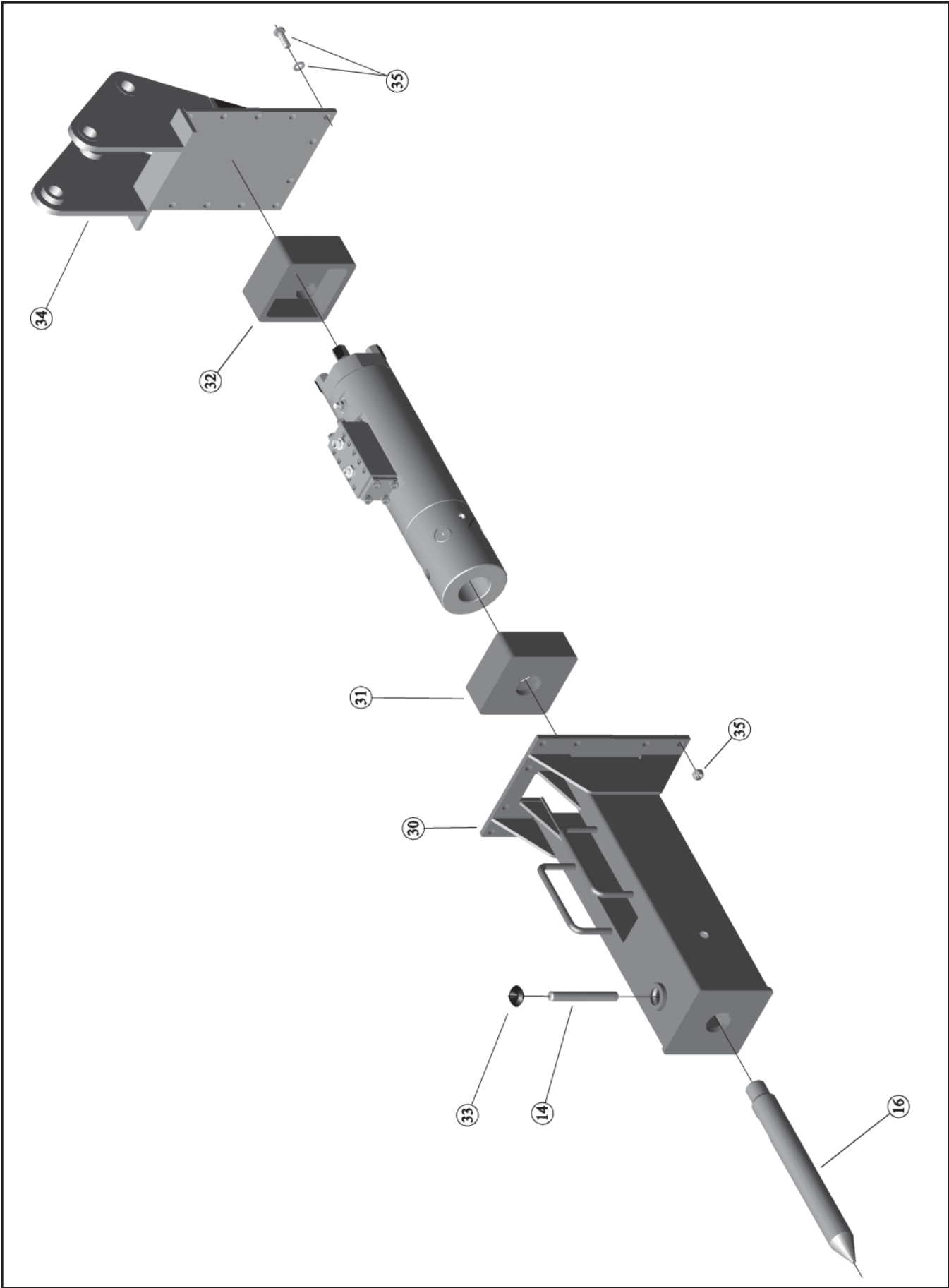
HYDRAULIC BREAKER



**Parts Manual
For Models G60**

January 2008





<u>REF#</u>	<u>QTY.</u>	<u>PART NO.</u>	<u>DESCRIPTION</u>
1	1	G60-001	Main Body
2	1	G60-002C	Chuck Housing
3	1	G60-003C	Main Valve Complete
3A	1	G60-003	Valve Housing (Bare)
3B	1	G60-019	Valve Spool
3C	1	G60-020	Main Valve Top Plate
3D	1	G60-021	Main Valve Bottom Plate
3E	1	G60-029	Plunger
3F	1	ARC-003	18mm Pressure Plug
3G	1	ARC-100	8mm Pressure Plug
3H	8	ARC-007	Socket Head Capscrew (Top & Bottom Valve Plate)
4	1	G60-004	Cylinder Head
5	1	G60-006	Piston
6	1	G60-007	Upper Cylinder Liner
7	1	G60-008	Lower Cylinder Liner
8	2	G60-009	Disc Washers
9	1	G60-010	Spacer
10	4	G60-013	Tie Rod
11	8	G60-014	Top Nut
12	4	G60-015	Bottom Nut
13	4	G60-063A	Tie Rod Washer
14	1	G60-017	Tool Retainer Pin
15	2	ARC-095	Dowel Pin
16A	1	G60-026P	Tool (Point)
16B	1	G60-026C	Tool (Chisel)
17	1	ARC-005	Grease Nipple
18	10	ARC-006	Socket Head Capscrew (Valve to Main Body)
19	1	ARC-008	Gas Valve Assembly
19A	1	ARC-008A	Gas Valve Dust Cap
19B	1	ARC-008B	Gas Valve Body
19C	2	ARC-008C	"O" Ring
19D	1	ARC-008D	1" Dowty Washer
19E	1	ARC-008E	"O" Ring
19F	1	ARC-008F	Gas Valve Shuttle
19G	1	ARC-008G	Gas Valve Spring
20	1	G60-059	Seal Kit Complete
20A	4	G60-059-1	"U" Seal
20B	1	G60-059-2	"U" Seal Rubber Quad
20C	1	G60-059-3	Wiper Ring

<u>REF#</u>	<u>QTY.</u>	<u>PART NO.</u>	<u>DESCRIPTION</u>
20D	7	G60-059-4	"O" Ring Cylinder Liner
20E	2	G60-059-5	"O" Ring Main Valve Top Plate
20F	1	G60-059-6	"O" Ring Main Valve Bottom Plate
20G	1	G60-059-7	"O" Ring Valve to Main Body
20H	2	G60-059-8	"O" Ring Valve to Main Body
20J	1	G60-059-9	"O" Ring Upper Cylinder Liner
20K	2	G60-059-10	P.T.F.E. Back Up Ring Valve to Main Body
20L	10	G60-059-11	P.T.F.E. Back Up Ring Cylinder Liner
20M	2	G60-059-12	P.T.F.E. Back Up Ring Main Valve Top Plate
20N	1	G60-059-13	P.T.F.E. Back Up Ring Main Valve Bottom Plate
20P	1	G60-059-14	"O" Ring Cylinder Head to Main Body Face Seal
21	1	ARC-027	Inlet Adapter $\frac{3}{4}$ " BSP x $\frac{3}{4}$ " JIC - 8 Male Couplings
21A	1	ARC-028	Outlet Adapter $\frac{3}{4}$ " BSP x $1\frac{1}{16}$ " JIC - 12 Male Couplings
22	1	ARC-018	Inlet Adapter $\frac{3}{4}$ " x $\frac{1}{2}$ " BSP Male Couplings
22A	1	ARC-020	Outlet Adapter $\frac{3}{4}$ " x $\frac{3}{4}$ " BSP Male Couplings
23	2	ARC-009	$\frac{3}{4}$ " Dowty Seal
24	1	ARC-002	$\frac{1}{4}$ " BSP Plug
30	1	G60-150	Hammer Box
31	1	G60-101	Lower Buffer
32	1	G60-100	Top Buffer
33	1	ARC-010	Rubber Donut
34	1	ARB-6000	Top Mount Bracket
34A	1	ARB-6001	Skid Steer Bracket
35	12	ARC-013	Top Bracket Bolt Assembly
	1	ARC-119	Decal Set
	1	ARC-012	Gas Charging Kit
	1	ARH-002	No. 8 JIC Female (Both Ends) $\frac{1}{2}$ " NB Hyd. Hose x 96" Long
	1	ARH-003	No. 12 JIC Female (Both Ends) $\frac{3}{4}$ " NB Hyd. Hose x 96" Long
A		N/A	Item A has been replaced with Item #2 (G60-002A Chuck Housing Complete). Item #2 (G60-002A) has Items B & C as integral parts.
B	1	G60-011	Lower Bush
C	1	G60-012	Thrust Bush
D	8	N/A	Item D has been replaced with 2 Lock Nuts (G60-014A)
E		N/A	Item E has been replaced with Item #2 (G60-002A Chuck Housing Complete). Item #2 (G60-002A) has items F & G as integral parts.
F	1	G60-005	Combination Bush
G	1	ARC-066	Dowel Pin
D	8	N/A	Item D has been replaced with 2 Lock Nuts (G60-014A).