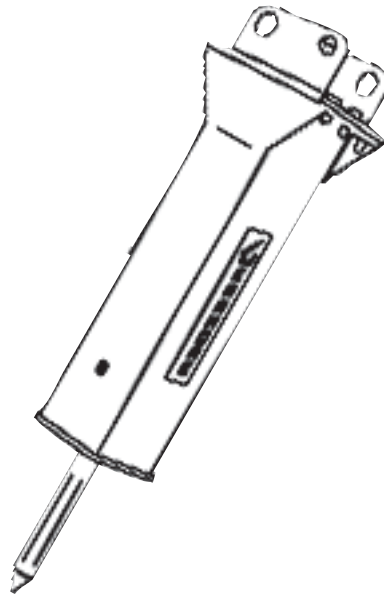


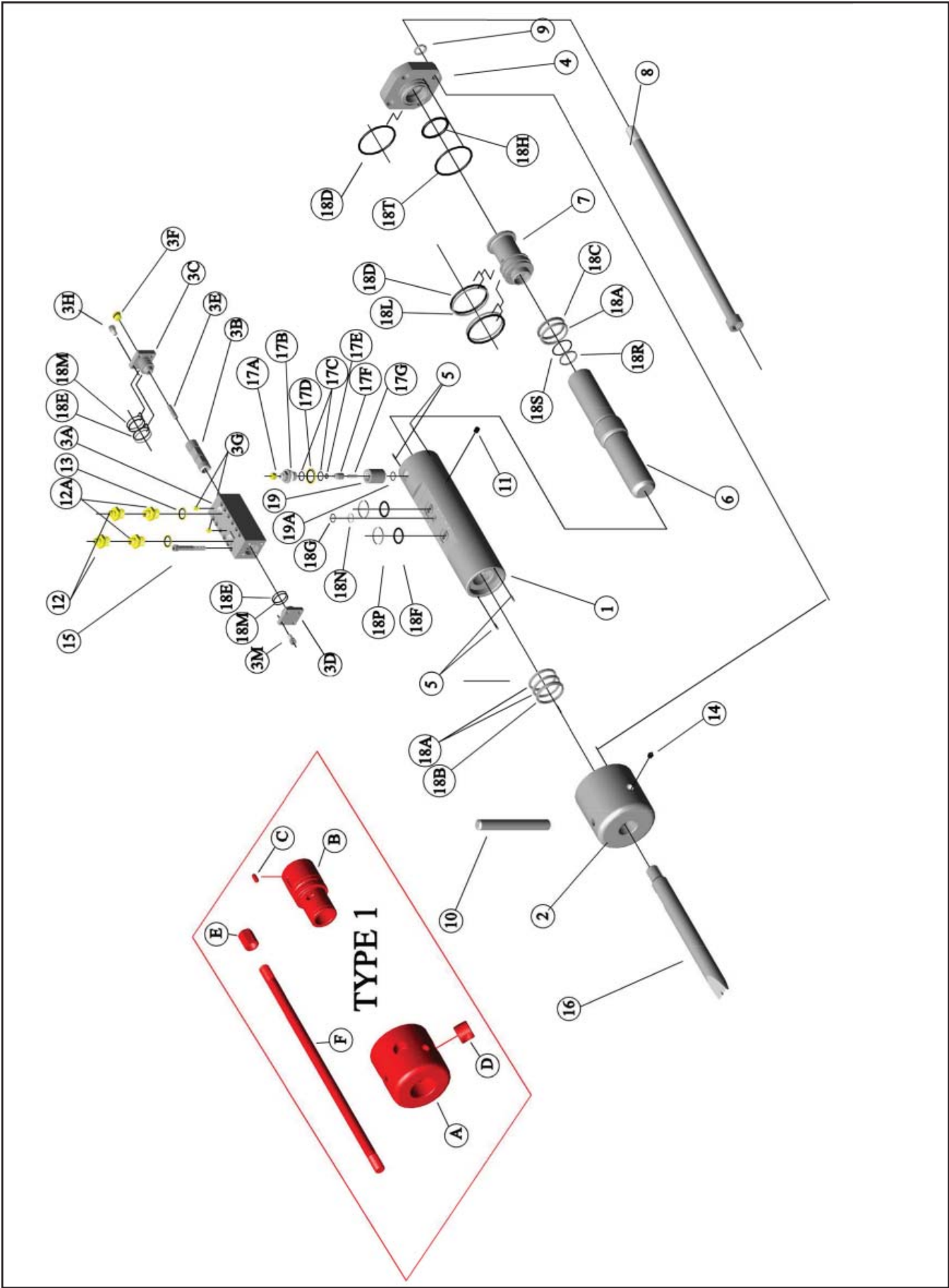


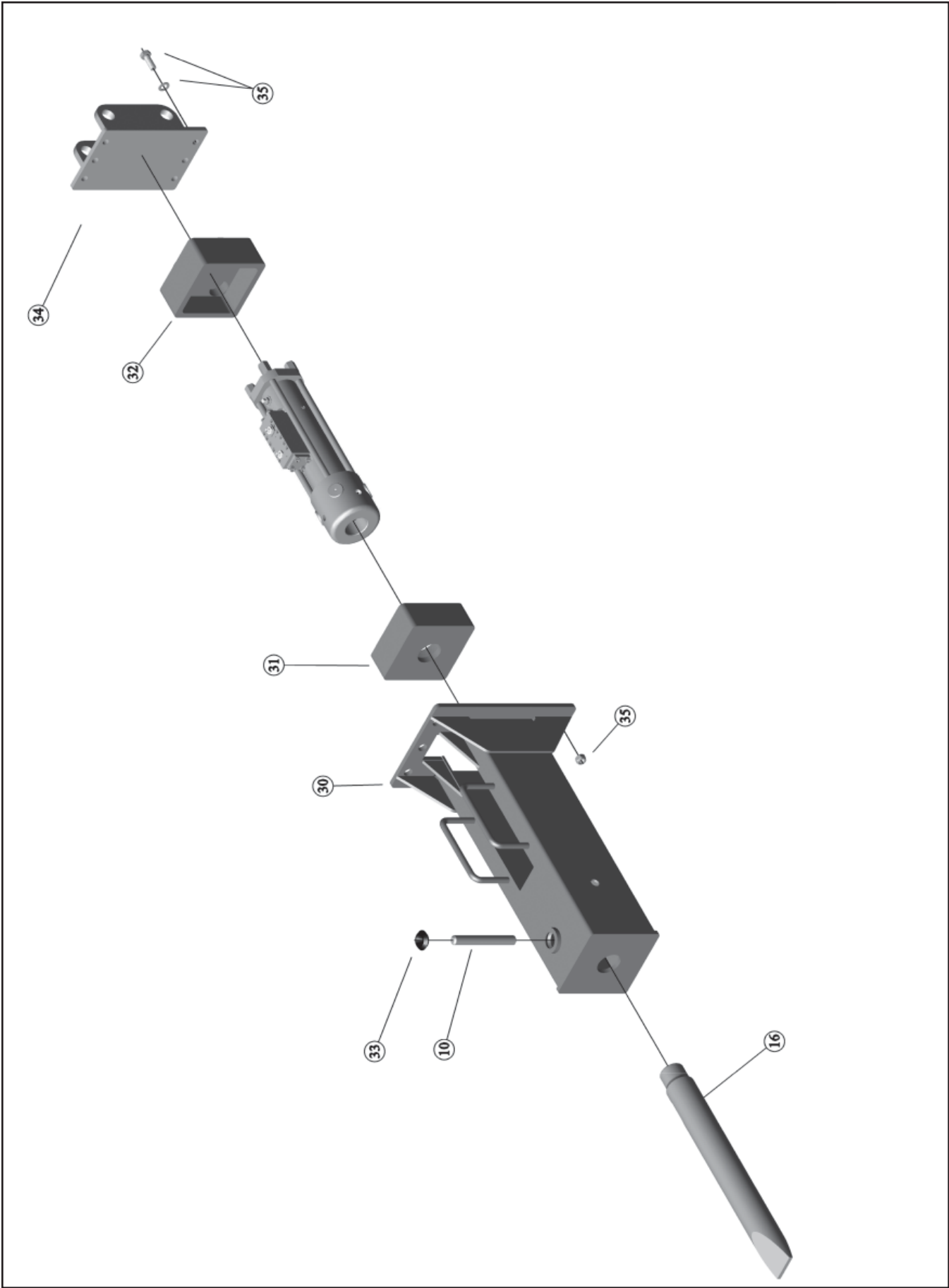
HYDRAULIC BREAKER



**Parts Manual
For Models G30**

January 2008





<u>REF#</u>	<u>QTY.</u>	<u>PART NO.</u>	<u>DESCRIPTION</u>
1	1	G30-001	Main Body
2	1	G30-002A	Chuck Housing
3	1	G30-003C	Valve Housing Complete
3A	1	G30-003	Valve Housing (Bare)
3B	1	G30-019	Valve Spool
3C	1	G30-020	Main Valve Top Plate
3D	1	G30-021	Main Valve Bottom Plate
3E	1	G30-029	Plunger
3F	1	ARC-003	18mm Pressure Plug
3G	2	ARC-100	8mm Pressure Plug
3H	8	ARC-053	Socket Head Capscrew (Top & Bottom Valve Plate)
4	1	G30-004	Cylinder Head
5	4	ARC-050	Dowel Pin
6	1	G30-006	Piston
7	1	G30-007	Upper Cylinder Liner
8	4	G30-013A	Tie Rod
9	4	ARC-062	Tie Rod Washer
10	1	G30-017	Tool Retainer Pin
11	1	ARC-061	M8 Plug
12	2	ARC-025	Inlet/Outlet Adapter $\frac{1}{2}$ " BSP x $\frac{3}{4}$ " JIC - 8 Male Couplings
12A	2	ARC-018	Inlet/Outlet Adapter $\frac{1}{2}$ " x $\frac{1}{2}$ " BSP Male Couplings
13	2	ARC-047	$\frac{1}{2}$ " Dowty Seal
14	1	ARC-005	Grease Nipple
15	12	ARC-054	Socket Head Capscrew (Valve to Main Body)
16A	1	G30-026P	Tool (Point)
16B	1	G30-026C	Tool (Chisel)
17	1	ARC-008	Gas Valve Assembly
17A	1	ARC-008A	Gas Valve Dust Cap
17B	1	ARC-008B	Gas Valve Body
17C	2	ARC-008C	"O" Ring
17D	1	ARC-008D	1" Dowty Washer
17E	1	ARC-008E	"O" Ring
17F	1	ARC-008F	Gas Valve Shuttle
17G	1	ARC-008G	Gas Valve Spring
18	1	G30-059	Seal Kit Complete
18A	3	G30-059-1	"U" Seal
18B	1	G30-059-2	Wiper Ring
18C	1	G30-059-3	Quad Seal
18D	3	G30-059-4	"O" Ring Cylinder Head & Upper Cylinder Liner
18E	3	G30-059-6	"O" Ring Valve Top & Bottom Plate
18F	2	G30-059-6	"O" Ring Valve to Body
18G	1	G30-059-7	"O" Ring Valve to Body
18H	1	G30-059-8	"O" Ring Cylinder Head to Upper Cylinder Liner Cushion

<u>REF#</u>	<u>QTY.</u>	<u>PART NO.</u>	<u>DESCRIPTION</u>
18L	2	G30-059-11	P.T.F.E. Back Up Ring Upper Cylinder Liner
18M	3	G30-059-12	P.T.F.E. Back Up Ring Valve Top & Bottom Plate
18N	1	G30-059-13	P.T.F.E. Back Up Ring Valve to Body
18P	2	G30-059-14	P.T.F.E. Back Up Ring Valve to Body
18R	1	G30-059-15	Composite Seal Upper Cylinder Liner
18S	1	G30-059-16	"O" Ring for Composite Seal Upper Cylinder Liner
18T	1	G30-059-17	"O" Ring Cylinder Head to Main Body Face Seal
19	1	ARC-008H	Gas Valve Adapter
19A	1	ARC-008J	Gas Valve Adapter "O" Ring
30	1	G30-150	Hammer Box
31	1	G30-101	Lower Buffer
32	1	G30-100	Top Buffer
33	1	ARC-010	Rubber Donut
34	1	ARB-2000	Top Mount Bracket
34A	1	ARB-2001	Skid Steer Bracket
35	6	ARC-014	Top Bracket Bolt Assembly
	1	ARC-116	Decal Set
	1	ARC-012	Gas Charging Kit
	2	ARH-001	No. 8 JIC Female (Both Ends) $\frac{1}{2}$ " NB Hyd. Hose x 77" Long
A		N/A	Item A has been replaced with Item #2 (G30-002A) Chuck Housing Complete). Item #2 (G30-002A) has Items B & C as integral parts. When retrofitting Item #2 to a Type 1 hammer new tie rod assemblies must also be fitted. - Part No. G30-013A (Tie Rod)
B	1	G30-012	Combo Bush
C	1	ARC-001	Dowel Pin
D	4	G30-015	Bottom Nut
E	4	G30-014	Top Nut