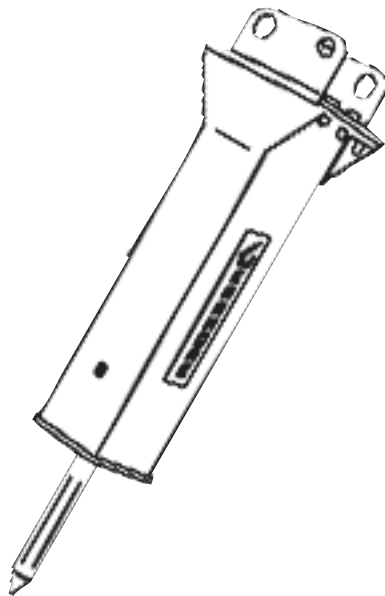


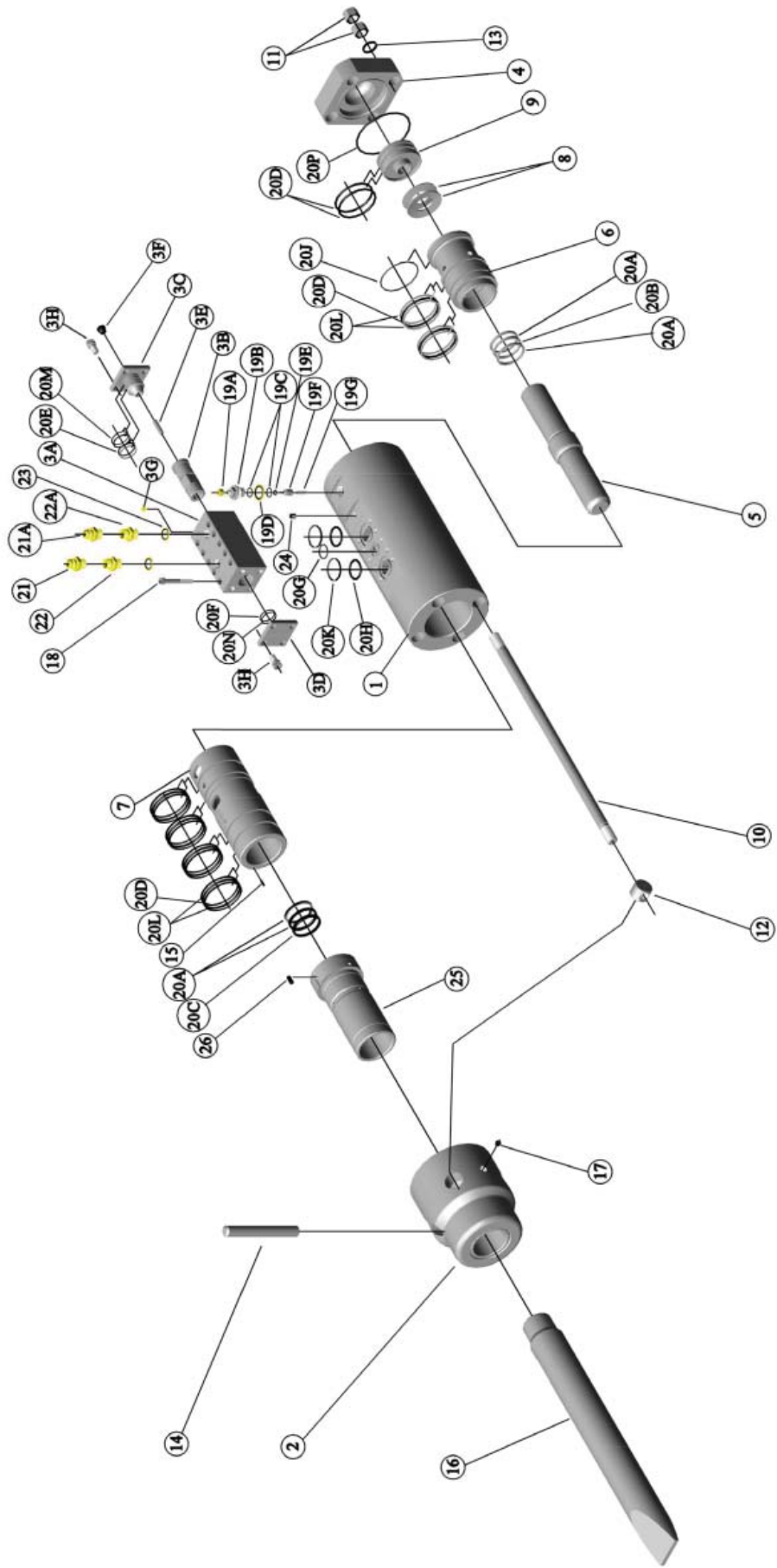


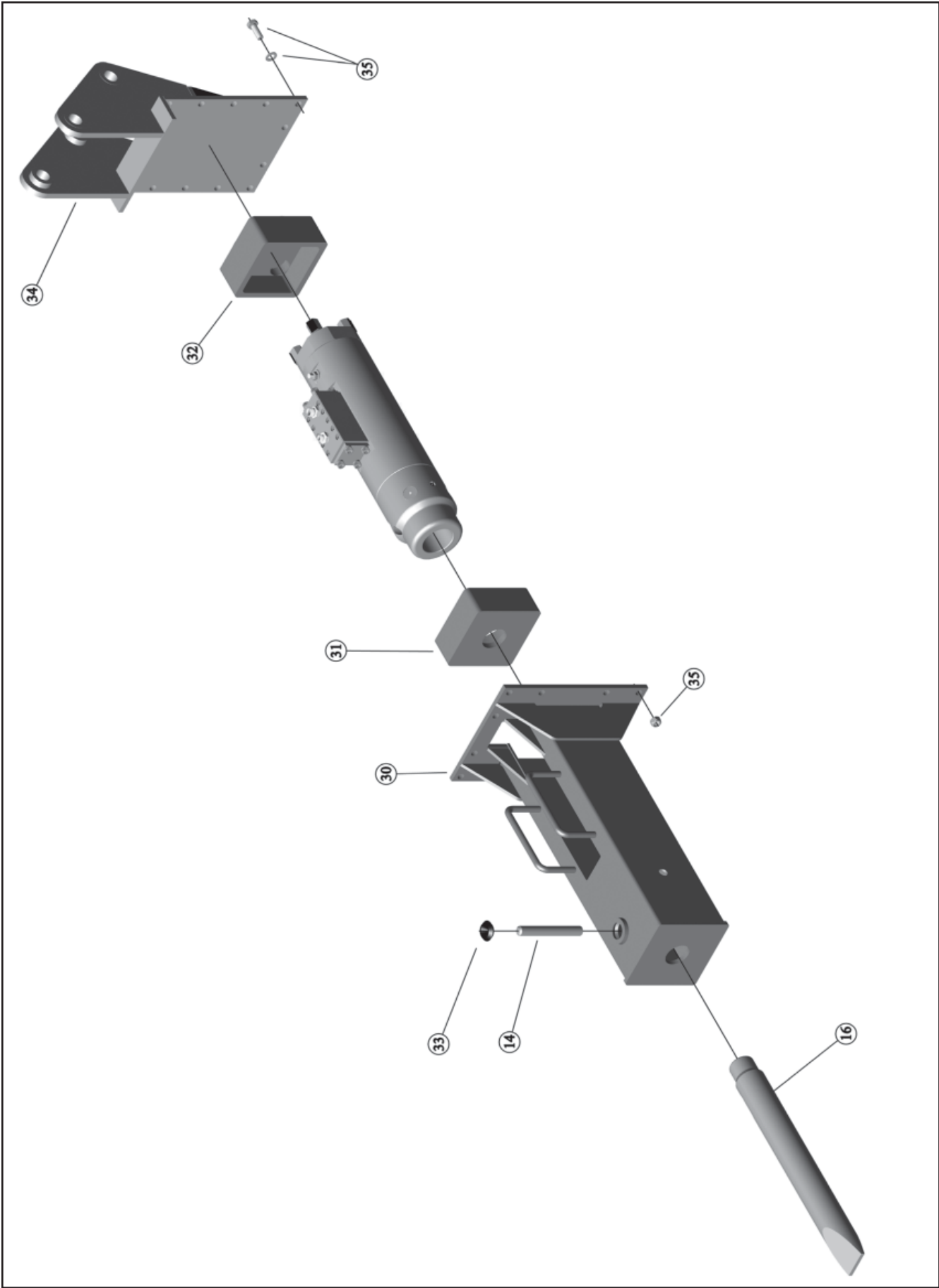
# HYDRAULIC BREAKER



**Parts Manual  
For Models G100**

**January 2008**





<u>REF#</u>	<u>QTY.</u>	<u>PART NO.</u>	<u>DESCRIPTION</u>
1	1	G100-001	Main Body
2	1	G100-002	Chuck Housing
3	1	G100-003C	Main Valve Complete
3A	1	G100-003	Valve Housing (Bare)
3B	1	G100-019	Valve Spool
3C	1	G100-020	Main Valve Top Plate
3D	1	G100-021	Main Valve Bottom Plate
3E	1	G100-029	Plunger
3F	1	ARC-003	18mm Pressure Plug
3G	1	ARC-100	8mm Pressure Plug
3H	8	ARC-007	Socket Head Capscrew (Top & Bottom Valve Plate)
4	1	G100-004	Cylinder Head
5	1	G100-006	Piston
6	1	G100-007	Upper Cylinder Liner
7	1	G100-008	Lower Cylinder Liner
8	2	G100-009	Disc Washers
9	1	G100-010	Spacer
10	4	G100-013	Tie Rod
11	8	G100-014A	Top Nut
12	4	G100-015	Bottom Nut
13	4	G100-063A	Tie Rod Washer
14	1	G100-017	Tool Retainer Pin
15	2	ARC-095	Dowel Pin
16A	1	G100-026P	Tool (Point)
16B	1	G100-026C	Tool (Chisel)
17	1	ARC-005	Grease Nipple
18	10	ARC-006	Socket Head Capscrew (Valve to Main Body)
19	1	ARC-008	Gas Valve Assembly
19A	1	ARC-008A	Gas Valve Dust Cap
19B	1	ARC-008B	Gas Valve Body
19C	2	ARC-008C	"O" Ring
19D	1	ARC-008D	1" Dowty Washer
19E	1	ARC-008E	"O" Ring
19F	1	ARC-008F	Gas Valve Shuttle
19G	1	ARC-008G	Gas Valve Spring
20	1	G100-059	Seal Kit Complete
20A	4	G100-059-1	"U" Seal
20B	1	G100-059-2	"U" Seal Rubber Quad
20C	1	G100-059-3	Wiper Ring

<u>REF#</u>	<u>QTY.</u>	<u>PART NO.</u>	<u>DESCRIPTION</u>
20D	8	G100-059-4	"O" Ring Cylinder Liner
20E	2	G100-059-5	"O" Ring Main Valve Top Plate
20F	1	G100-059-6	"O" Ring Main Valve Bottom Plate
20G	1	G100-059-7	"O" Ring Valve to Main Body
20H	2	G100-059-8	"O" Ring Valve to Main Body
20J	1	G100-059-9	"O" Ring Upper Cylinder Liner
20K	2	G100-059-10	P.T.F.E. Back Up Ring Valve to Main Body
20L	12	G100-059-11	P.T.F.E. Back Up Ring Cylinder Liner
20M	2	G100-059-12	P.T.F.E. Back Up Ring Main Valve Top Plate
20N	1	G100-059-13	P.T.F.E. Back Up Ring Main Valve Bottom Plate
20P	1	G100-059-14	"O" Ring Cylinder Head to Main Body Face Seal
21	1	ARC-027	Inlet Adapter $\frac{3}{4}$ " BSP x $1 \frac{1}{16}$ " JIC - 12 Male Couplings
21A	1	ARC-028	Outlet Adapter $\frac{3}{4}$ " BSP x $1 \frac{1}{16}$ " JIC - 12 Male Couplings
22	1	ARC-019	Inlet Adapter $\frac{3}{4}$ " x $\frac{3}{4}$ " BSP Male Couplings
22A	1	ARC-020	Outlet Adapter $\frac{3}{4}$ " x $\frac{3}{4}$ " BSP Male Couplings
23	2	ARC-009	$\frac{3}{4}$ " Dowty Seal
24	1	ARC-002	$\frac{1}{4}$ " BSP Plug
25	1	G100-005	Combination Bush
26	1	ARC-066	Dowel Pin
30	1	G100-150	Hammer Box
31	1	G100-101	Lower Buffer
32	1	G100-100	Top Buffer
33	1	ARC-010	Rubber Donut
34	1	ARC-059	Tuckaway Top Bracket
34A	1	ARC-059A	Straight Top Bracket
35	12	ARC-013	Top Bracket Bolt Assembly
	1	ARC-120	Decal Set
	1	ARC-012	Gas Charging Kit
	1	ARC-041	$\frac{1}{2}$ " NB Two Wire Hose with $\frac{3}{4}$ " JIC - 8 Fittings 2400mm
	1	ARC-042	$\frac{3}{4}$ " NB Two Wire Hose with $1 \frac{1}{16}$ " JIC - 12 Fittings 2400mm
	1	ARC-034	$\frac{1}{2}$ " NB Two Wire Hose with $\frac{1}{2}$ " BSP Fittings 2400mm
	1	ARC-035	$\frac{3}{4}$ " NB Two Wire Hose with $\frac{3}{4}$ " BSP Fittings 2400mm