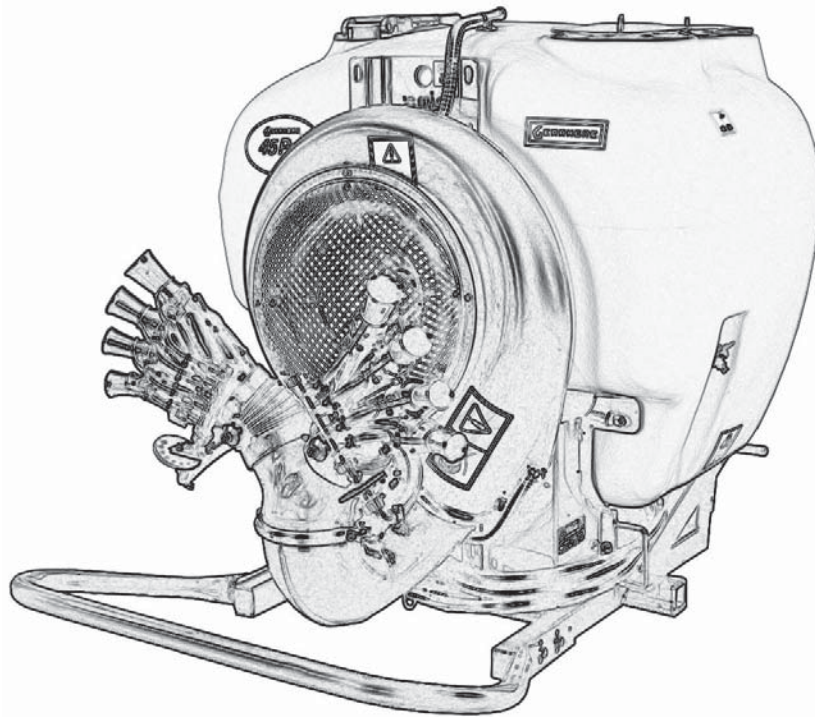


**GEARMORE INC.**

# VENTURI AIR SPRAYERS



## Parts Manual For Model P45N1-400-G 3-Point Mount

November 2011 (Rev.)

# TABLE OF CONTENTS

<u>SECTION</u>	<u>DESCRIPTION</u> .....	<u>PAGE</u>
<b>1</b>	<b>Introduction</b> .....	<b>1</b>
1.1	Purchaser's Responsibility .....	1
1.2	Serial Number Information .....	1
<b>2</b>	<b>Replacement Parts</b> .....	<b>2 - 10</b>
2.1	Main Frame Assembly .....	2-3
2.2	Agitation & Tank (s/n 001019-001273) .....	4-5
2.3	Agitation & Tank (s/n 010099 - ...) .....	6-8
2.4	Fan Assembly .....	9
2.5	Fan Support/Belt Tensioner (s/n 001019-001273) ..	10-11
2.6	Fan Support/Belt Tensioner (s/n 010099 - ...) .....	12-13
2.7	Clutch & Pulley Assembly .....	14
2.8	Liquid Flow Path (s/n 001019-001273) .....	15-17
2.9	Liquid Flow Path (s/n 010099-...) .....	18-20
2.10	Liquid Flow Path (s/n 070030-...) .....	21-23
2.11	Inline Filter Assembly.....	24
2.12	Pump & Tension Pulley .....	25-26
2.13	Fan Support .....	27
2.14	Dial-A-Rate .....	28
2.15	Manually Operated Valve .....	29
2.16	Manual Command Group 2-Way .....	30
2.17	Optional Solenoid Control.....	31
2.18	Optional Solenoid Command Group.....	32
2.19	Optional Control Box For Solenoid Valve .....	33
2.20	Bondioli & Pavesi Driveline.....	34
<b>3</b>	<b>Limited Warranty</b> .....	<b>35</b>

# 1 INTRODUCTION

This manual contains parts diagrams and replacement parts lists. Do not modify the equipment in any way. Unauthorized modification may impair the function and/or safety and could affect the life of the equipment.

It is the responsibility of the owner to make sure the machine is maintained properly, and that all parts are in working order.

Where replacement parts are necessary for periodic maintenance and servicing, genuine factory replacement parts ***MUST*** be used to restore your equipment to original specifications. The manufacturer will not be responsible for injuries or damages caused by use of unapproved parts and/or accessories.

The manufacturer reserves the right to make improvements to the machinery and parts at any time and at their discretion.

**OPERATOR ORIENTATION** - The directions left, right, front and rear, are as seen from the driver's seat and facing in the direction of travel.

## 1.1 PURCHASER'S RESPONSIBILITY

It is the responsibility of the purchaser and/or operator to.....

- Inspect the equipment and replace or repair any parts that are damaged or worn which under continued operation would cause damage, wear to other parts, or cause a safety hazard.
- Return the equipment or parts to the authorized dealer, from where it was purchased, for service or replacement of defective parts that are covered by warranty. (The factory may inspect equipment or parts before warranty claims are honored.)
- Payment of all costs incurred by the dealer for traveling to or transporting the equipment for warranty inspection and or claims.

## 1.2 MODEL / SERIAL NUMBER

NAME: \_\_\_\_\_

PURCHASED FROM: \_\_\_\_\_

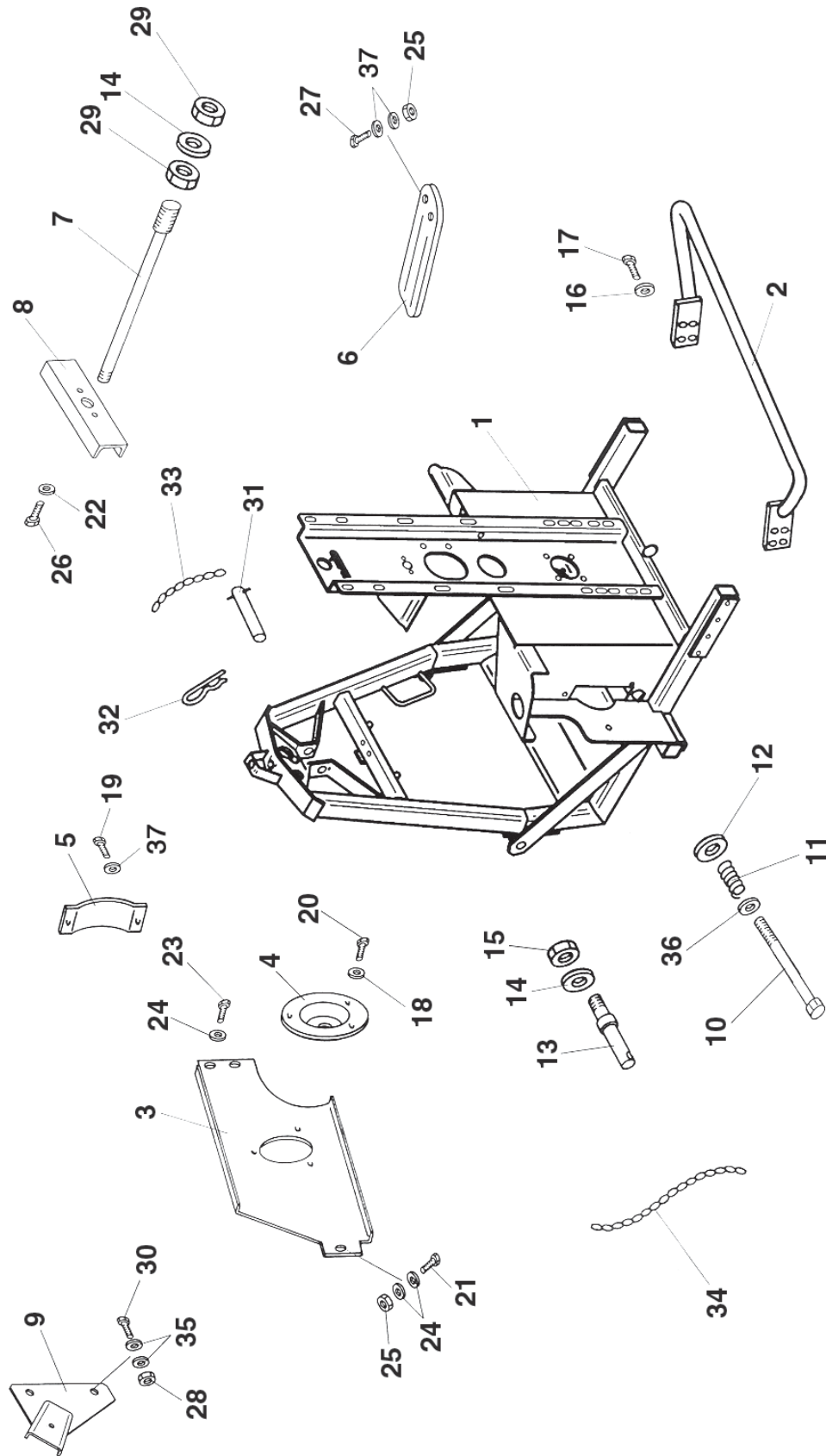
DATE OF PURCHASE: \_\_\_\_\_

MODEL NUMBER: \_\_\_\_\_

SERIAL NUMBER: \_\_\_\_\_

# 2 REPLACEMENT PARTS

## 2.1 MAIN FRAME ASSEMBLY



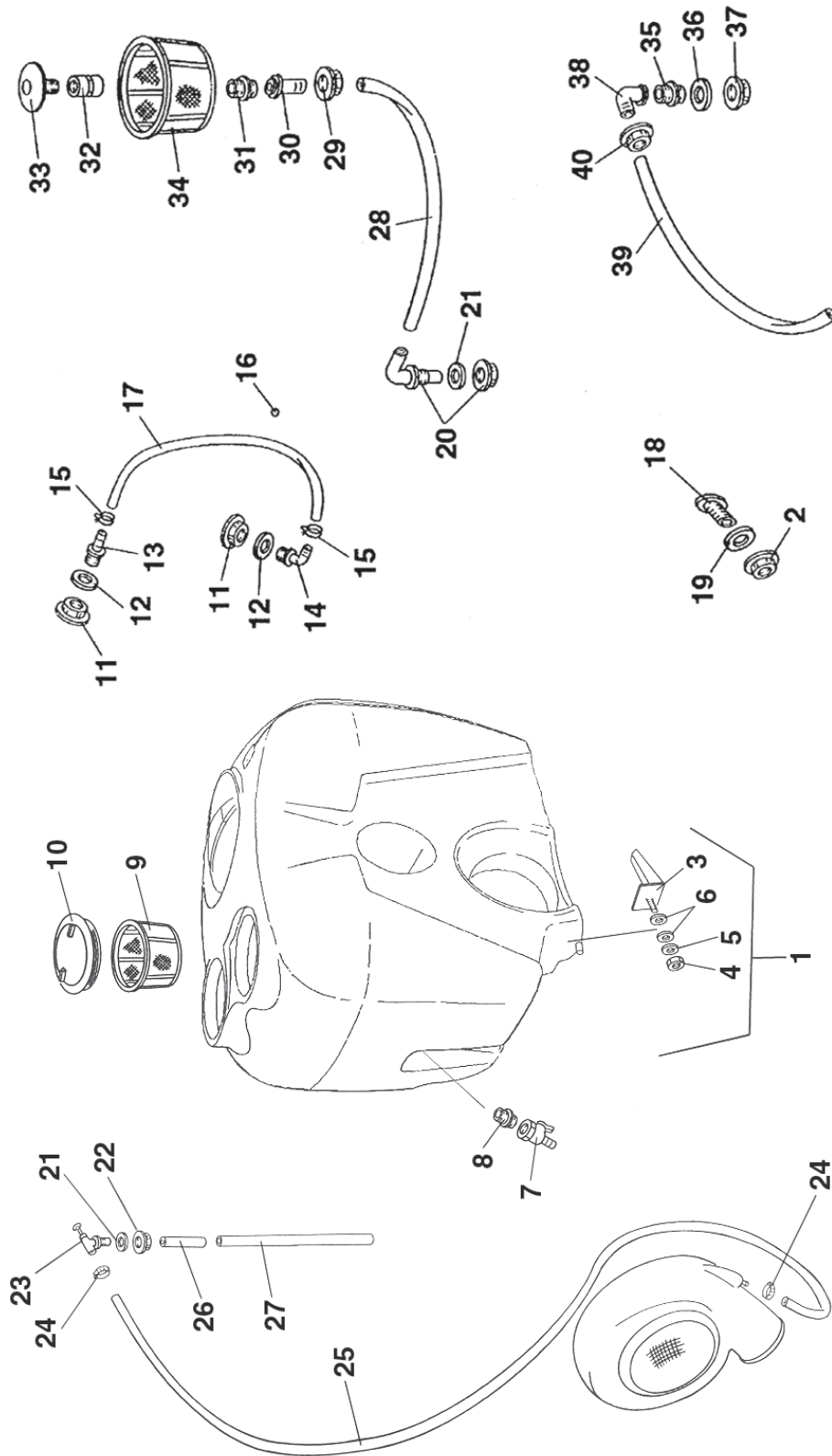
## 2 REPLACEMENT PARTS (CONTINUED)

### 2.1 MAIN FRAME ASSY. PARTS LIST

<u>REF.</u>	<u>QTY.</u>	<u>PART NO.</u>	<u>DESCRIPTION</u>
1	1	40.226.000	Main Frame
2	1	40.000.000	Rear Bumper
3	1	40.227.000	Plate, Front
4	1	20.434.000	Cover
5	1	20.743.000	Cover Plate
6	1	20.744.000	Bracket
7	1	20.754.100	Rod, Tank Retaining
8	1	20.737.100	Support Plate
9	1	20.739.000	Support Plate
10	1	20.738.000	Bolt, Belt Stretcher
11	1	02.964.000	Spring
12	1	02.140.003	Washer
13	2	04.064.000	Lift Pin
14	3	RD.022.000	Washer D.22
15	2	DO.22.5588G	Nut M22
16	4	RP.010.000	Washer D.10
17	4	TE.010.025T	Bolt M10 x 25
18	3	RP.006.018	Washer D.18
19	2	TE.008.016T	Bolt M8 x 16
20	3	TE.006.016T	Bolt M6 x 16
21	1	TE.008.025T	Bolt M8 x 25
22	2	RD.008.000	Washer D.8
23	2	TE.008.012T	Bolt M8 x 12
24	4	RP.008.024	Washer D.8 x 24
25	3	DO.08.5588G	Nut M8
26	2	TE.008.035T	Bolt M8 x 35
27	2	TE.008.070	Bolt M8 x 70
28	2	DO.10.5588G	Nut M10
29	2	DO.22.5587G	Nut M22
30	2	TE.010.025T	Bolt M10 x25
31	1	04.076.000	Pin
32	1	00.100.004	Hair Pin
33	2	02.278.001	Chain D2.2 x 16"
34	2	02.278.001	Chain D2.2 x 24"
35	4	RP.010.030	Washer D.10 x 30
36	1	RP.012.000	Washer D.12
37	6	RP.008.000	Washer D.8

## 2 REPLACEMENT PARTS (CONTINUED)

### 2.2 AGITATION & TANK 400LT (For s/n 001019 - 001273)



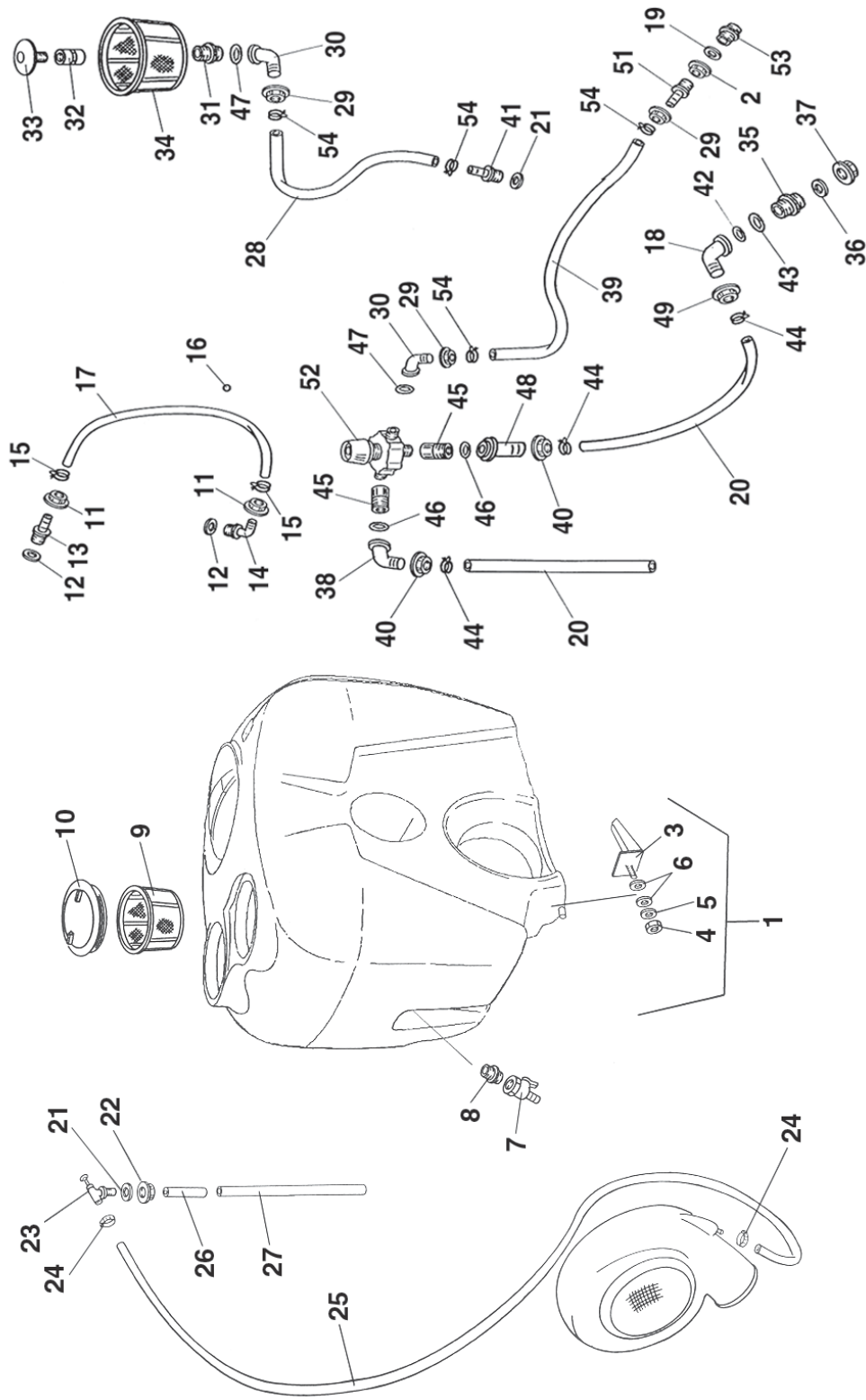
## 2 REPLACEMENT PARTS (*CONTINUED*)

### 2.2 AGITATION & TANK 400LT PARTS LIST (For s/n 001019 - 001273)

<u>REF.</u>	<u>QTY.</u>	<u>PART NO.</u>	<u>DESCRIPTION</u>
1	1	40.219.000	Tank w/Support
2	1	00.542.000	Back Nut
3	1	20.749.000	Support Plate
4	1	DA.010.0AG	Nut M10 x 1.5
5	1	RP.010.030	Washer D.10 x 30
6	2	20.436.000	Rubber Washer D.6
7	1	02.497.000	Ball Valve
8	1	02.380.000	Nipple
9	1	02.298.000	Basket, Strainer
10	1	02.476.000	Lid D.255
11	2	02.458.000	Ring Nut
12	2	OR2022353	O-Ring 20.22 x 3.53
13	1	02.482.000	Hosetail
14	1	02.457.000	Hosetail 90o
15	2	F0.008.016I	Clamp D.8/16
16	1	02.478.000	Floating Ball D.9.5
17	1	02.378.000	Gauge Hose
18	1	00.587.000	Nipple
19	1	02.066.000	Gasket 33 x 45 x 3
20	1	02.290.000	Hosetail Assembly
21	2	02.032.000	Gasket 26 x 40 x 2
22	1	00.541.000	Back Nut
23	1	02.135.000	Piston
24	2	F0.014.024	Clamp D.14/24
25	As Req'd	02.372.000	Hose D.19 Per Foot
26	As Req'd	02.212.000	Hose D.19 Per Foot
27	As Req'd	02.420.000	Hose D.20 Per Foot
28	As Req'd	20.211.000	Hose D.19 Per Foot
29	1	00.055.242	Nut
30	1	00.055.022	Hosetail
31	1	00.055.034	Nipple
32	1	00.373.000	Sleeve
33	1	00.131.010	Shower Head
34	1	00.646.010	Basket, Strainer
35	1	00.345.000	Nipple
36	1	02.033.000	Gasket 42 x 55 x 3
37	1	00.543.000	Nut
38	1	00.058.004	Hosetail D.30
39	As Req'd	02.215.000	Hose D.30 Per Foot
40	1	00.058.006	Cap Nut

## 2 REPLACEMENT PARTS (CONTINUED)

### 2.3 AGITATION & TANK 400LT (For s/n 010099 - . . . .)



## 2 REPLACEMENT PARTS (*CONTINUED*)

### 2.3 AGITATION & TANK 400LT PARTS LIST (For s/n 010099 - . . . .)

<u>REF.</u>	<u>QTY.</u>	<u>PART NO.</u>	<u>DESCRIPTION</u>
1	1	40.219.002	Tank 100 Gal. s/n 010099 - -----
2	1	00.542.000	Back Nut
3	1	20.749.000	Support Plate
4	1	DA.010.0AG	Nut M10 x 1.5
5	1	RP.010.030	Washer D.10 x 30
6	2	20.436.000	Rubber Washer D.6
7	1	02.497.000	Ball Valve
8	1	02.380.000	Nipple
9	1	02.298.000	Basket, Strainer
10	1	02.476.000	Lid D.255
11	2	02.458.000	Ring Nut
12	2	OR2022353	O-Ring 20.22 x 3.53
13	1	02.482.000	Hosetail
14	1	02.457.000	Hosetail 90o
15	2	F0.008.016I	Clamp D.8/16
16	1	02.478.000	Floating Ball D.9.5
17	1	02.378.000	Gauge Hose L=850
18	1	00.587.000	Nipple
19	1	02.066.000	Gasket 33 x 45 x 3
20	As Req'd	02.215.000	Hose D.25 Per Foot
21	2	02.032.000	Gasket 26 x 40 x 2
22	1	00.541.000	Back Nut
23	1	02.135.000	Piston
24	2	F0.014.024	Clamp D.14/24
25	As Req'd	02.372.000	Hose D.19 Per Foot
26	As Req'd	02.212.000	Hose D.19 Per Foot
27	As Req'd	02.420.000	Hose D.20 Per Foot
28	1	20.798.075	Hose D.25 x 33 L=750
29	3	00.055.242	Nut
30	2	00.055.027	Hosetail
31	1	00.055.034	Nipple
32	1	00.373.000	Sleeve
33	1	00.131.000	Shower Head
34	1	00.646.010	Basket, Strainer
35	1	00.345.000	Nipple
36	1	02.033.000	Gasket 42 x 55 x 3
37	1	00.543.000	Nut

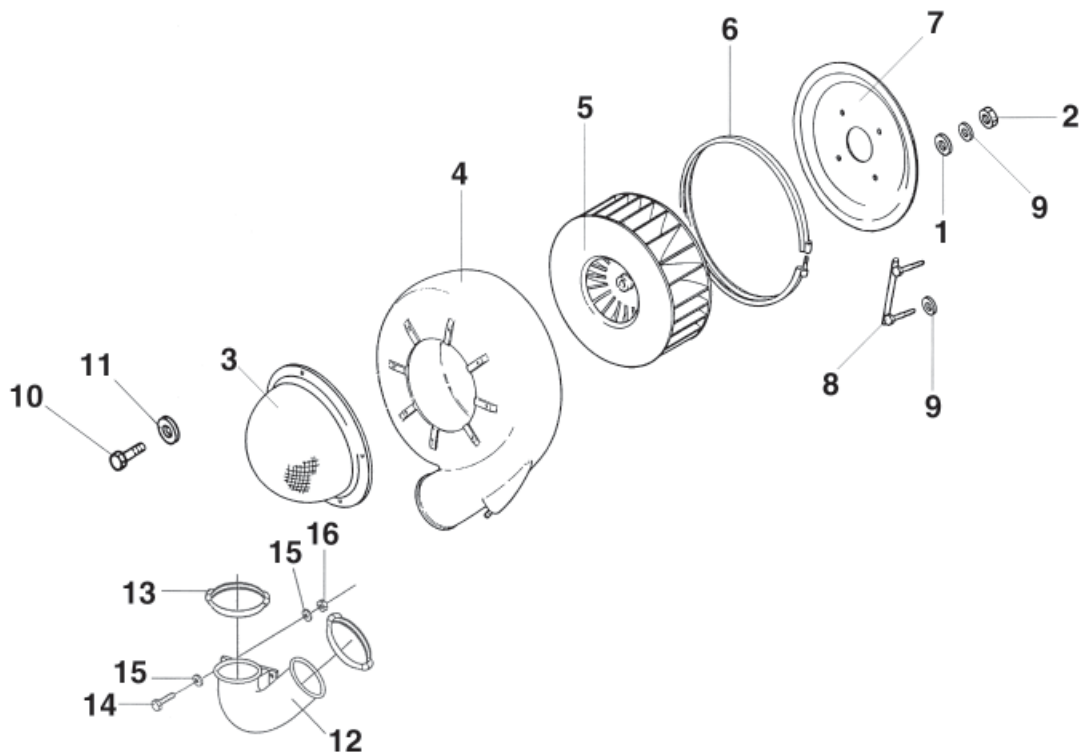
## 2 REPLACEMENT PARTS (*CONTINUED*)

### 2.3 AGITATION & TANK 400LT PARTS LIST (For s/n 010099 - . . . .)

<u>REF.</u>	<u>QTY.</u>	<u>PART NO.</u>	<u>DESCRIPTION</u>
38	1	00.058.004	Hosetail D.30
39	1	20.770.047	Hose D.25 L=470
40	2	00.058.006	Cap Nut
41	1	20.793.000	Nipple
42	1	OR.003.106	O-Ring 26.64 x 2.62
43	1	OR.003.112	O-Ring 28.24 x 2.62
44	3	F0.025.040I	Clamp D.25/40
45	2	02.374.000	Reducer
46	2	OR.000.508	O-Ring 30 x 3
47	2	OR2381262	O-Ring 23.81 x 2.62
48	1	00.058.028	Nipple
49	1	00.493.000	Nut
50	1	20.787.000	Main Lid Assembly
51	1	00.055.021	Hose Barb D.25
52	1	02.447.300	Regulator Valve
53	1	2502041	Nipple 1" H=45/22
54	4	F0.023.035I	clamp 23/35

## 2 REPLACEMENT PARTS (CONTINUED)

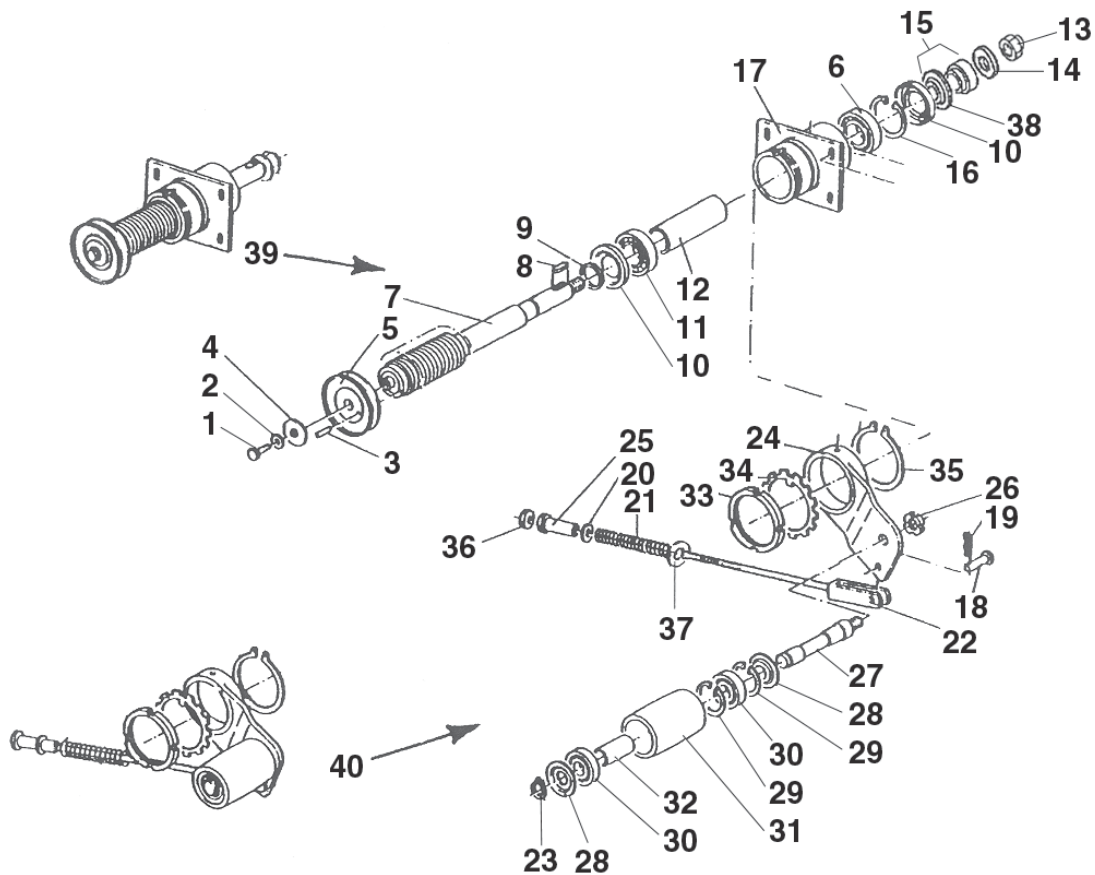
### 2.4 FAN ASSEMBLY



<u>REF.</u>	<u>QTY.</u>	<u>PART NO.</u>	<u>DESCRIPTION</u>
1	4	RP.010.040	Washer D.10 x 40
2	4	D0.10.5588G	Nut M10
3	1	05.654.100	Protection Cover
4	1	04.854.000	Fan Casing
5	1	04.720.000	Fan
6	1	04.874.000	Clamp D.485
7	1	04.853.000	Cover s/n 001019 - 001273
7	1	40.268.000	Cover s/n 010099 - -----
8	2	20.088.000	Bracket For Back Cover
9	8	RP.010.030	Washer D.10 x 30
10	4	TE.006.016T	Bolt M6 x 16
11	4	RP.006.000	Washer D.6
12	1	04.882.000	Lower Elbow D.175
13	2	05.616.000	Clamp D.190
14	2	TE.010.030T	Bolt M10 x 30
15	4	RP.010.000	Washer D.10
16	2	D0.10.5588G	Nut M10

## 2 REPLACEMENT PARTS (CONTINUED)

### 2.5 FAN SUPPORT & BELT TENSIONER (For s/n 001019 - 001273)



<u>REF.</u>	<u>QTY.</u>	<u>PART NO.</u>	<u>DESCRIPTION</u>
1	1	TE.010.025FT	Bolt 10 x 25
2	1	RP.010.028	Washer D.10 x 28
3	1	SE.006.020	Spring Pin 6 x 20
4	1	RP.010.040	Washer D.10 x 40
5	1	02.723.003	Pulley D78 x 13
6	1	21305	Bearing
7	1	04.721.054	Shaft P45
8	1	L.08.07.35	Key 8 x 7 x 35
9	1	04.862.000	Spacer
10	2	AL.STO.35.62	Seal 35 x 62
11	1	22206	Bearing
12	1	04.864.000	Spacer Tube
13	1	DA.022.0BF	Nut M22 x 1.5
14	1	RP.022.000	Washer D.22
15	1	04.863.000	Bushing
16	1	IO.062.000	Circlip I62
17	1	04.865.010	Housing

## 2 REPLACEMENT PARTS (*CONTINUED*)

### 2.5 FAN SUPPORT & BELT TENSIONER PARTS LIST (For s/n 001019 - 001273)

#### BELT STRETCHER

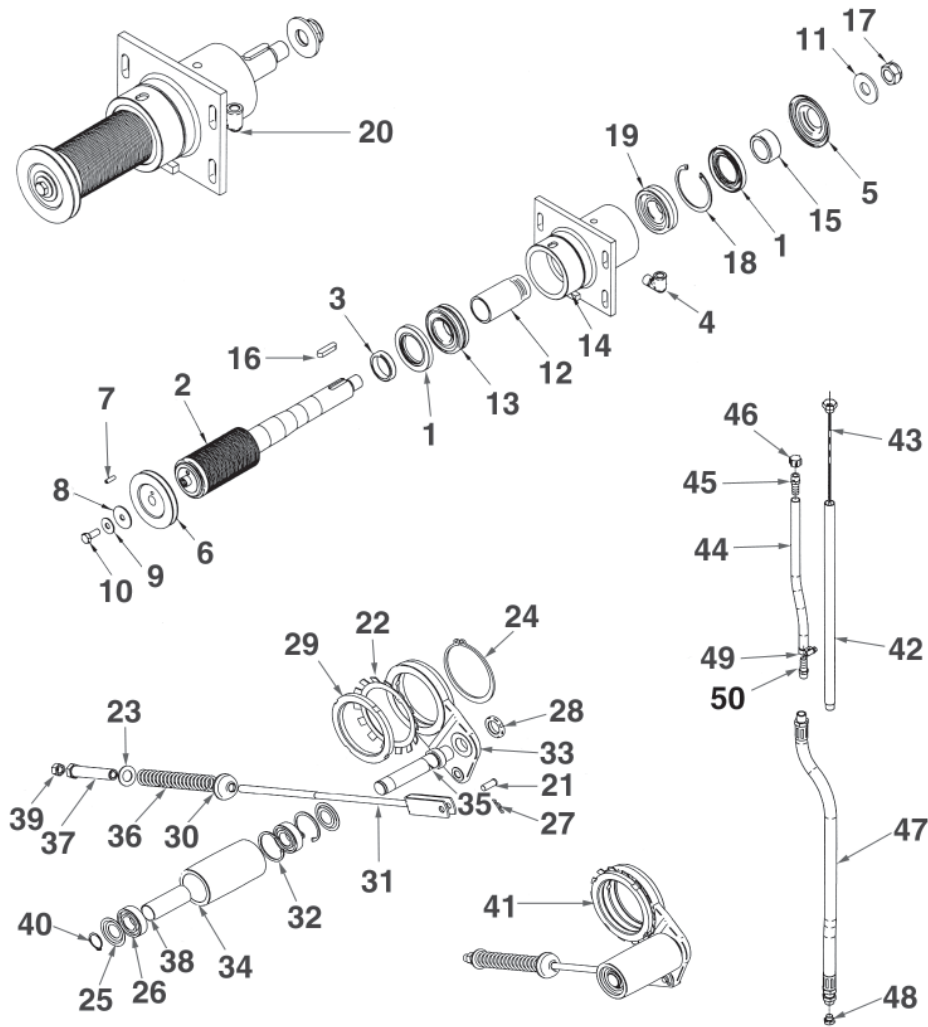
<u>REF.</u>	<u>QTY.</u>	<u>PART NO.</u>	<u>DESCRIPTION</u>
18	1	04.593.000	Pin
19	1	00.100.002	Clip
20	1	RP.019.000	Washer D.19
21	1	04.578.000	Spring
22	1	05.653.000	Rod, Adjustment
23	1	EO.025.000	Circlip E25
24	1	04.095.000	Belt Stretcher Housing
25	1	04.583.000	Screw Threaded Spacer
26	1	KM.005.000	Nut
27	1	04.835.000	Belt Stretcher Pin
28	2	04.585.000	Cover Seal 45 x 85
29	2	IO.052.000	Circlip I52
30	2	6205-2RS	Bearing
31	1	04.083.000	Roller
32	1	04.084.000	Spacer
33	1	04.099.000	Nut
34	1	MB.016.000	Washer
35	1	EO.080.000	Circlip E80
36	1	D0.12.5588G	Nut
37	1	20.260.000	Special Washer
38	1	04.863.002	Spacer

#### COMPLETE FAN SUPPORT

39	1	04.865.37C	Fan Support
40	1	04.850.000	Belt Stretcher

## 2 REPLACEMENT PARTS (CONTINUED)

### 2.6 FAN SUPPORT & BELT TENSIONER (For s/n 010099 - . . . .)



<u>REF.</u>	<u>QTY.</u>	<u>PART NO.</u>	<u>DESCRIPTION</u>
1	2	40X62X10	Oil Seal
2	1	40.271.054	Shaft D.54
3	1	40.264.000	Bushing
4	1	20.789.000	90° Elbow
5	1	40.267.000	Cover
6	1	02.723.003	Pulley D.995
7	1	SE.006.020	Roll Pin
8	1	RP.010.040	Washer D.10 x 40
9	1	RP.010.028	Washer D.10 x 28
10	1	TE.010.025FT	Bolt M10 x 25
11	1	RP.022.000	Washer D.22
12	1	40.262.000	Spacer

## 2 REPLACEMENT PARTS (*CONTINUED*)

### 2.6 FAN SUPPORT & BELT TENSIONER PARTS LIST (For s/n 010099 - . . . .)

<u>REF.</u>	<u>QTY.</u>	<u>PART NO.</u>	<u>DESCRIPTION</u>
13	1	22206	Bearing
14	1	40.260.000	Housing
15	1	40.263.000	Spacer
16	1	L.08.07.35	Key 8 x 7 x 35
17	1	DA.022.0BF	Nut M22 x 1.5
18	1	I0.062.000	Circlip I62
19	1	21305	Bearing
20	1	40.284.000	Support Assembly

#### **BELT TENSIONER**

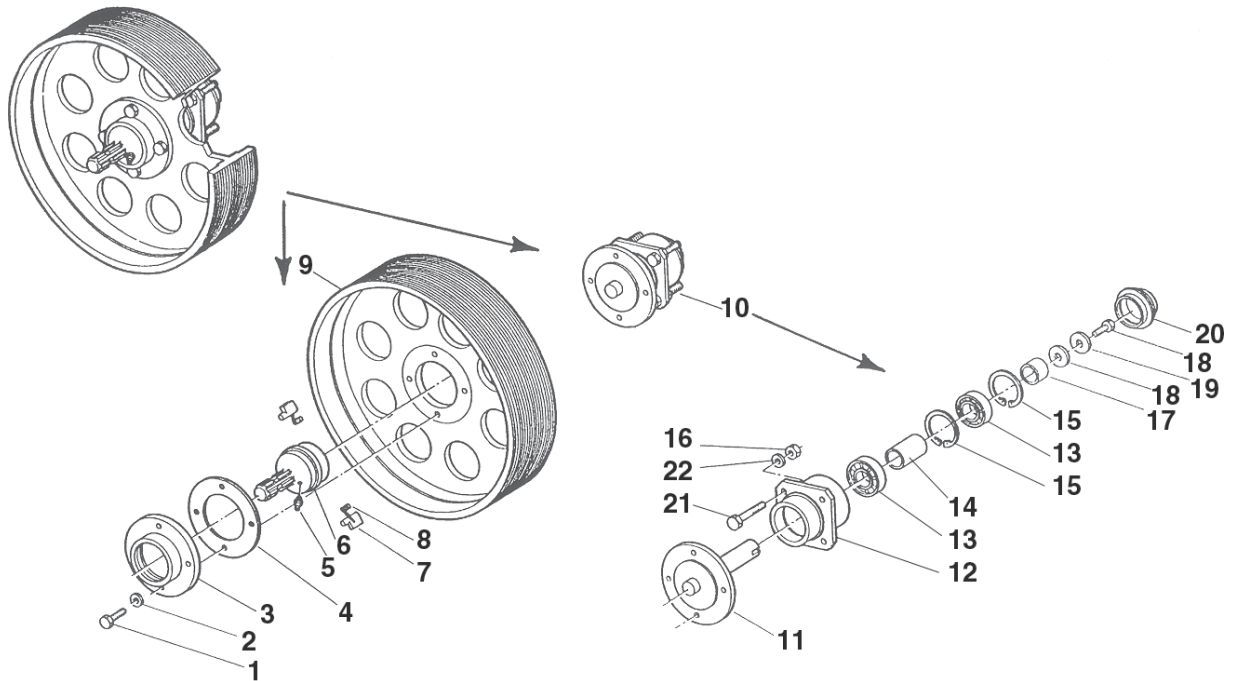
21	1	04.593.000	Pin
22	1	MB.016.000	Washer
23	1	RP.019.000	Washer D.19
24	1	E0.080.000	Circlip E80
25	2	04.585.000	Cover, Dust
26	2	6205-2RS	Bearing
27	1	00.100.002	Hair Pin
28	1	KM.005.000	Nut M5
29	1	04.099.000	Nut
30	1	20.260.000	Cup Washer
31	1	05.726.000	Rod, Adjustment
32	2	I0.052.000	Circlip I52
33	1	04.095.000	Support, Idler
34	1	04.083.000	Roller
35	1	04.835.000	Pin
36	1	04.578.000	Spring
37	1	04.583.000	Special Screw
38	1	04.084.000	Spacer
39	1	D0.12.5588G	Nut m12
40	1	E0.025.000	Circlip E25
41	1	04.850.002	Belt Tension Assembly

#### **OIL TUBE**

42	1	40.273.000	Pipe L=390
43	1	40.265.000	Dipstick
44	1	02.213.040	Breather D.10 L=400
45	1	00.414.100	Nipple D.11
46	1	02.013.000	Plug
47	1	20.790.000	Drain Pipe L=585
48	1	40.266.000	Drain Plug M12 x 1.5
49	1	F0.008.016I	Clamp
50	1	20.792.000	Nipple D.11

## 2 REPLACEMENT PARTS (CONTINUED)

### 2.7 CLUTCH & PULLEY ASSEMBLY



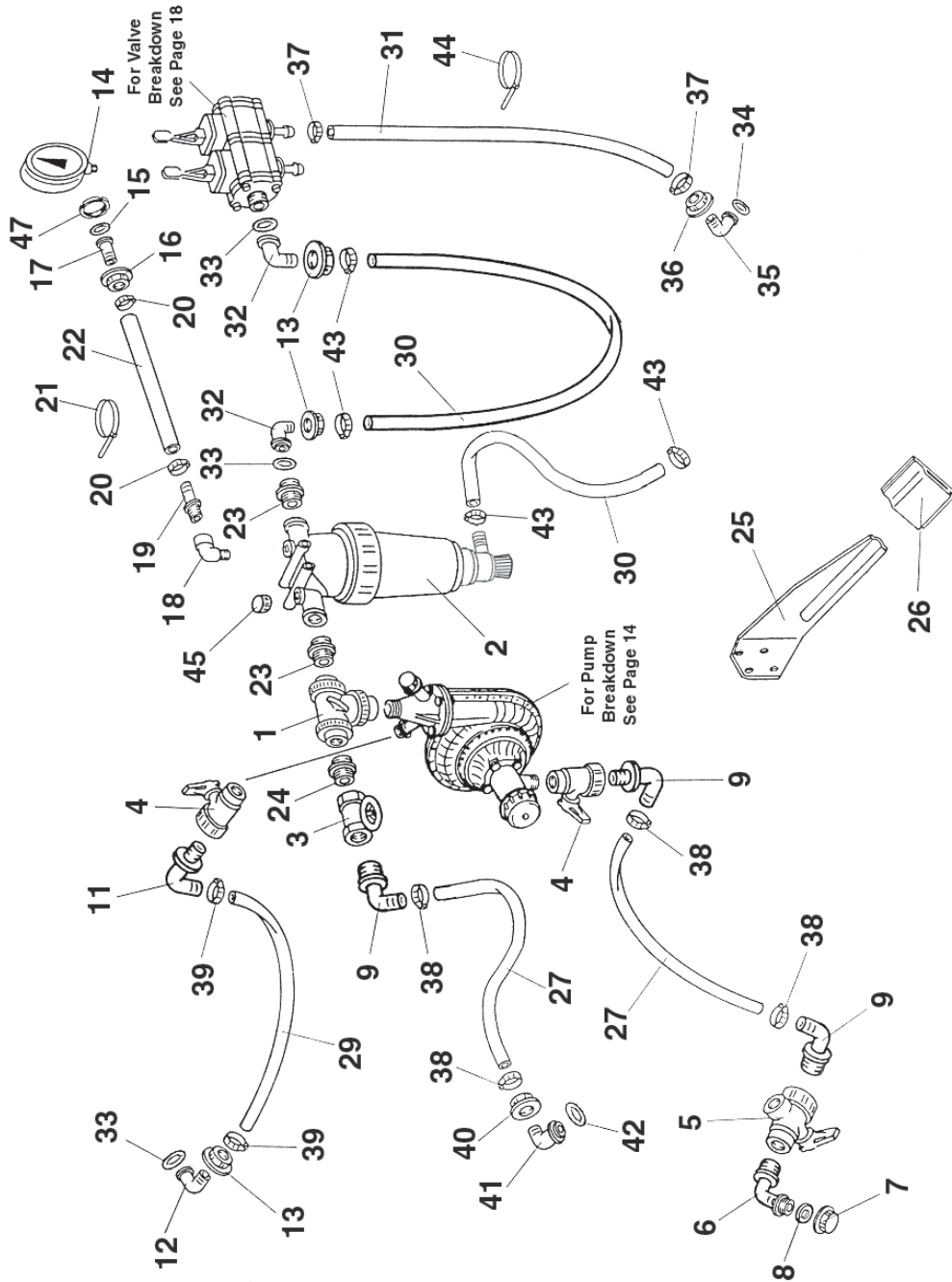
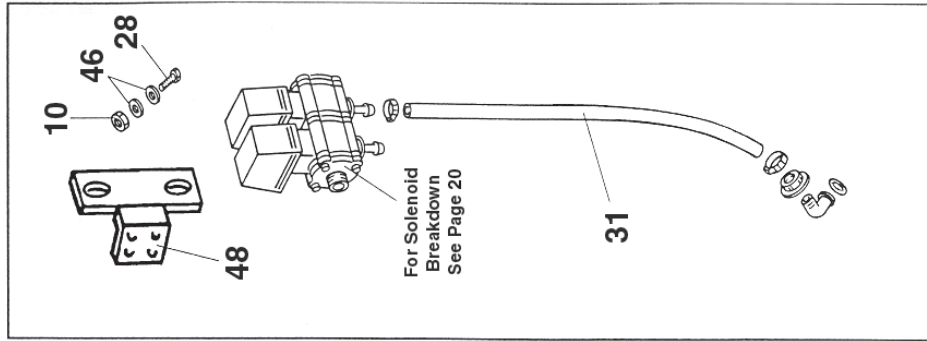
<u>REF.</u>	<u>QTY.</u>	<u>PART NO.</u>	<u>DESCRIPTION</u>
1	4	TE.012.040F	Bolt M12 x 1.25 x 40
2	4	RD.012.000	Washer D.12
3	1	04.066.000	Body
4	1	04.719.000	Gasket
5	1	ID.010.001	Grease Nipple M10
6	1	03.701.000	Rotor
7	2	02.502.002	Key
8	2	02.502.001	Spring
9	1	00.450.J32	Pulley
10	1	04.094.01C	Clutch

#### **CLUTCH ASSEMBLY**

11	1	04.085.000	Shaft
12	1	04.094.000	Clutch
13	2	6206-2RS	Bearing
14	1	04.060.000	Spacer
15	2	IO.062.000	Internal Circlip D.62
16	4	D0.10.5588G	Nut M10
17	1	04.590.000	Spacer
18	2	RP.012.036	Washer D.12 x 36
19	1	TE.012.025FT	Bolt M12 x 25
20	1	04.062.001	Hub Cover
21	4	TE.010.080	Bolt M10 x 80
22	4	RP.010.000	Washer D.10

## 2 REPLACEMENT PARTS (CONTINUED)

### 2.8 LIQUID FLOW PATH MANUAL CONTROL VALVES (For s/n 001019 - 001273)



## 2 REPLACEMENT PARTS (*CONTINUED*)

### 2.8 LIQUID FLOW PATH MANUAL CONTROL VALVES PARTS LIST (For s/n 001019 - 001273)

<u>REF.</u>	<u>QTY.</u>	<u>PART NO.</u>	<u>DESCRIPTION</u>
1	1	24.058.000	Ball Valve
2	1	02.450.020	Filter Assembly
3	1	02.272.000	Tee
4	2	04.109.000	Ball Valve
5	1	24.053.000	Ball Valve
6	1	02.292.000	Hosetail 90o
7	1	TF.001.000	Cap
8	1	02.265.000	Gasket 20 x 30 x 5
9	3	00.465.000	Hosetail 90o
10	2	D0.10.5588G	Nut M10
11	1	24.068.000	Elbow 90o
12	1	00.055.037	Hose Barb
13	3	00.055.242	Nut
14	1	02.445.000	Pressure Gauge
15	1	02.349.000	Gasket 17 x 23 x 3
16	1	02.288.000	Nut
17	1	24.071.000	Hosetail
18	1	20.172.000	Steel Elbow
19	1	00.414.000	Hosetail
20	2	F0.014.024	Clamp D.14/24
21	2	02.354.000	Tie
22	As Req'd	02.213.000	Hose D.10 Per Foot
23	2	00.045.012	Nipple
24	1	00.055.034	Nipple
25	1	20.112.000	Bracket, Support
26	1	20.107.000	Pocket
27	As Req'd	02.238.000	Hose D.30 Per Foot
28	2	TE.010.030T	Bolt M10 x 30
29	As Req'd	02.219.000	Hose D.25 Per Foot
30	As Req'd	02.212.000	Hose D.19 Per Foot
31	As Req'd	02.211.000	Hose D.16 Per Foot
32	2	00.055.038	Elbow
33	3	OR.000.132	O-Ring 23.81 x 2.62
34	2	OR.000.121	O-Ring 15.88 x 2.62
35	2	00.055.046	Elbow
36	2	00.055.045	Nut
37	4	F0.016.025I	Clamp D.16/24
38	4	F0.025.045	Clamp D.25/45
39	2	F0.024.036	Clamp D.24/36

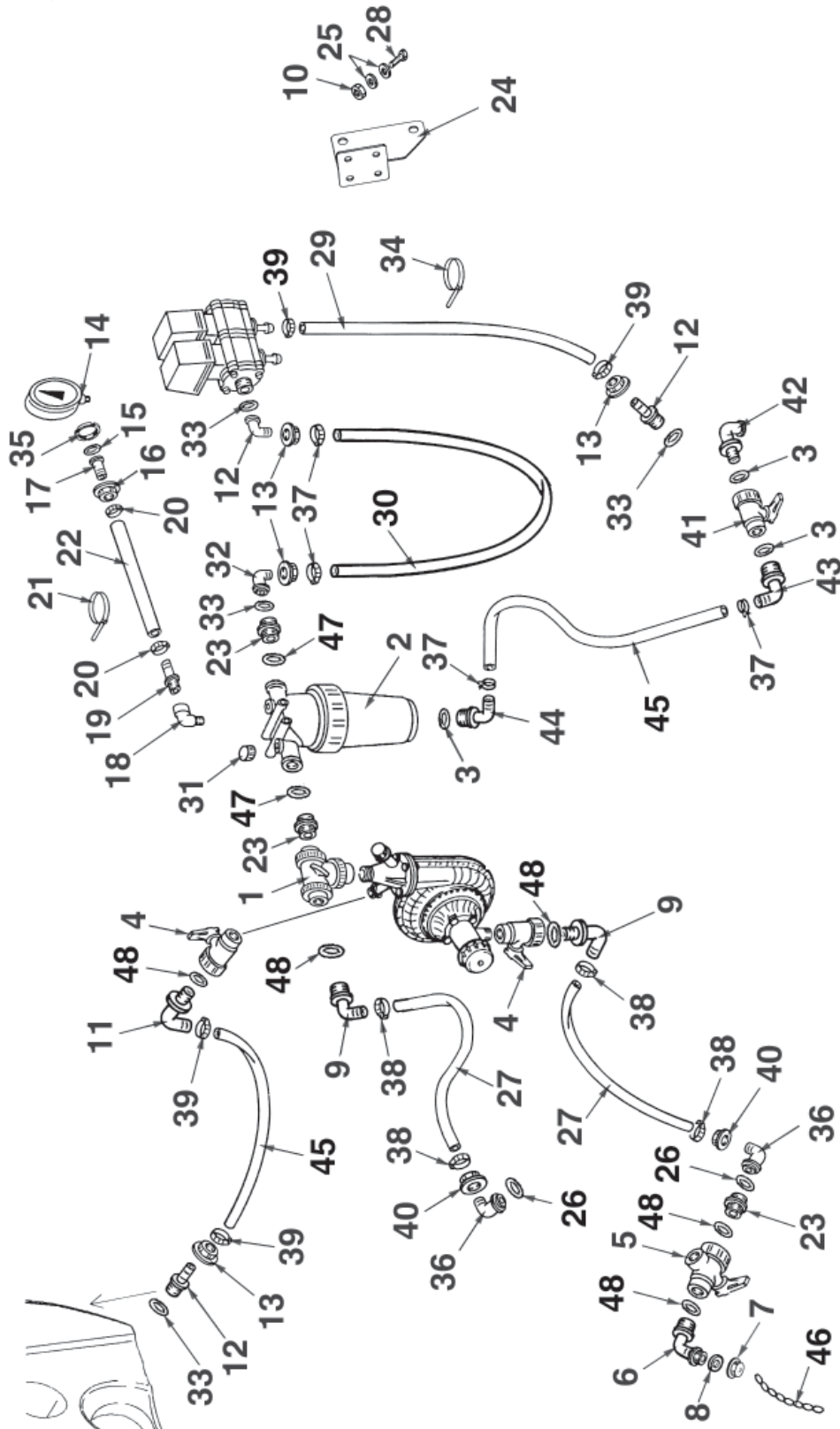
## 2 REPLACEMENT PARTS (*CONTINUED*)

### 2.8 LIQUID FLOW PATH MANUAL CONTROL VALVES PARTS LIST (For s/n 001019 - 001273)

<u>REF.</u>	<u>QTY.</u>	<u>PART NO.</u>	<u>DESCRIPTION</u>
40	1	00.058.006	Nut
41	1	00.058.004	Hosetail
42	1	OR.003.112	O-Ring 28.24 x 2.62
43	4	F0.016.027I	Clamp D.16/27
44	7	02.355.000	Tie
45	1	TM.014.000	Plug
46	4	RP.010.000	Washer D.10
47	1	24.072.000	Nut
48	1	20.741.000	Bracket

## 2 REPLACEMENT PARTS (CONTINUED)

### 2.9 LIQUID FLOW PATH MANUAL CONTROL VALVES (For s/n 010099 - . . . . .)



## 2 REPLACEMENT PARTS (CONTINUED)

### 2.9 LIQUID FLOW PATH MANUAL CONTROL VALVES PARTS LIST (For s/n 010099 - . . . .)

<u>REF.</u>	<u>QTY.</u>	<u>PART NO.</u>	<u>DESCRIPTION</u>
1	1	24.058.000	Ball Valve
2	1	02.450.010	Filter Assembly
3	3	OR2580353	O-ring 25.80 x 3.53
4	2	04.109.000	Ball Valve
5	1	24.053.000	Ball Valve
6	1	02.292.000	Hosetail 90o
7	1	TF.001.100	Cap
8	1	02.265.000	Gasket 20 x 30 x 5
9	2	00.465.000	Hosetail 90o
10	2	D0.10.5588G	Nut M10
11	1	24.068.000	Elbow 90o
12	3	00.055.021	Hose Barb
13	5	00.055.242	Nut
14	1	02.445.000	Pressure Gauge
15	1	20.769.000	Gasket 19.2 x 11.5 x 2.5
16	1	02.287.000	Nut
17	1	02.379.020	Hosetail
18	1	20.172.000	Steel Elbow
19	1	00.414.000	Hosetail
20	2	F0.008.016I	Clamp D.8/16
21	2	02.354.000	Tie
22	As Req'd	02.213.000	Hose D.10 Per Foot
23	3	00.045.012	Nipple
24	1	20.774.000	Bracket
25	4	RP.010.000	Washer
26	1	OR.003.112	O-ring 28.24 x 2.62
27	As Req'd	02.238.000	Hose D.30 Per Foot
28	2	TE.010.030T	Bolt M10 x 30
29	As Req'd	02.211.000	Hose D.16 Per Foot
30	As Req'd	02.212.000	Hose D.19 Per Foot
31	1	TM.014.000	Plug
32	2	00.055.038	Elbow
33	3	OR.000.132	O-ring 23.81 x 2.62
34	1	02.355.000	Tie
35	1	24.072.000	Special Nut
36	2	00.058.004	Elbow
37	4	F0.023.035I	Clamp D.25/35

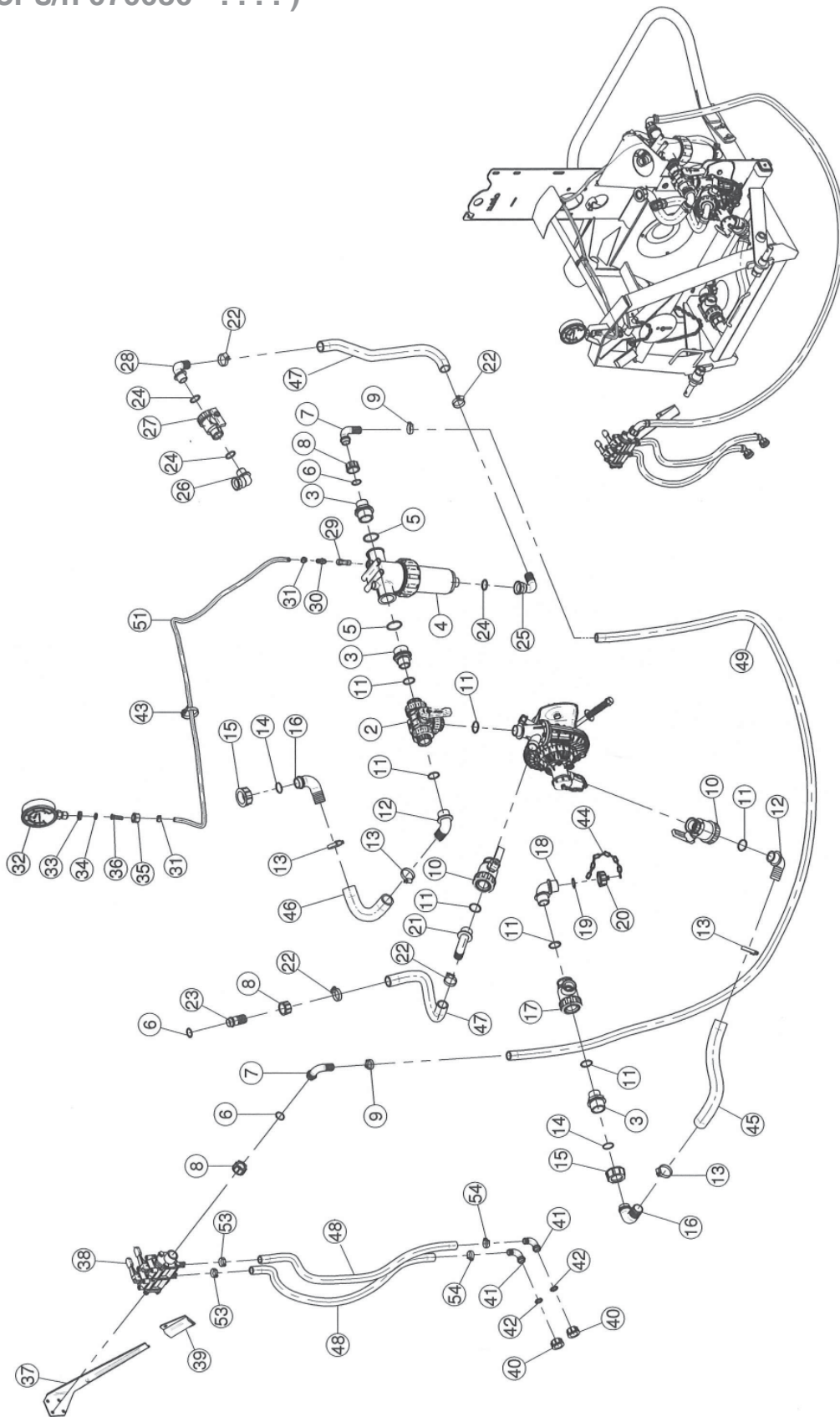
## 2 REPLACEMENT PARTS (*CONTINUED*)

### 2.9 LIQUID FLOW PATH MANUAL CONTROL VALVES PARTS LIST (For s/n 010099 - . . . . .)

<u>REF.</u>	<u>QTY.</u>	<u>PART NO.</u>	<u>DESCRIPTION</u>
38	4	F0.025.040I	Clamp D.25/40
39	2	F0.023.035I	Clamp D.23/35
40	2	00.058.006	Nut
41	1	02.395.000	Ball Valve
42	1	24.069.000	Elbow
43	1	20.795.000	Elbow
44	1	20.794.000	Elbow
45	As Req'd	02.219.000	Hose D.25 Per Foot
46	As Req'd	02.278.001	Chain D2.2 Per Foot
47	2	OR3969353	O-Ring 39.69 x 3.53
48	5	OR303	O-Ring 30 x 3

## 2 REPLACEMENT PARTS (CONTINUED)

### 2.10 LIQUID FLOW PATH - MANUAL CONTROL VALVES (For s/n 070030 - . . . .)



## 2 REPLACEMENT PARTS (CONTINUED)

### 2.10 LIQUID FLOW PATH MANUAL CONTROL VALVES PARTS LIST (For s/n 070030 - . . . .)

<u>REF.</u>	<u>QTY.</u>	<u>PART NO.</u>	<u>DESCRIPTION</u>
2	1	X21.058.000	3 Way Valve
3	3	X00.045.012	1" 1/4 M - 1" M Reducer Nipple
4	1	X02.450.110	Line Filter 1" 1/4 Female
5	2	XOR.000.144	O-Ring D.39.69 x 3.53
6	3	XOR.000.132	23.81 x 2.62 O-Ring Gasket
7	2	X00.055.038	Curved Union with R.H. D.19
8	3	X00.055.24.2	1" Fly Nut
9	2	XFC.026.5.028	Kobra Clamp 26.5 - 28
10	2	X04.109.000	2 Way Valve
11	7	XOR.000.508	30 x 3 O-Ring Gasket
12	2	X00.465.000	Hosetail D.30 1" GAS
13	4	XF0.025.040I	Stainless Steel Clip
14	2	XOR.003.112	O-Ring D.28.24 x 2.62
15	2	X00.058.006	1" 1/4 Fly Nut
16	2	X00.058.004	D.30 Hosetail
17	1	X24.053.000	3 Way Valve
18	1	X02.292.000	90° Hosetail Male Thread
19	1	X24.100.000	Gasket D.30 x 3
20	1	XTF.001.100	Packing
21	1	X24.068.000	D.25 Hosetail
22	4	XF0.023.035I	Stainless Steel Clip
23	1	X00.055.021	Straight Hose R.H. D.25
24	3	XOR.000.134	O-Ring D.25.8 x 3.53
25	1	X20.794.000	Pipe 90° R.H. 25 3/4" GAS Fem
26	1	X24.069.000	Pipe Elbow 3/4" M-F
27	1	X02.395.000	Valve 3/4" GAS F.F. Ball
28	1	X20.795.000	Pipe Elbow 90° R.H. D.25 3/4" GAS M
29	1	X20.172.000	Steel Elbow 1/4"
30	1	X00.414.000	Straight Hose D.11 1/4"
31	2	XFC.013.5.015	Kobra Clamp
32	1	X02.445.000	Pressure Gauge
33	1	X24.072.000	Brass Fly Nut 1/2"
34	1	X20.769.000	Gasket D.19.2/11.5 x 2.5
35	1	X02.287.000	Fly Nut 1/2"
36	1	X02.379.020	Straight Union R.H. 10
37	1	X20.112.000	Support Control Assembly
38	1	X20.108.101C	2 Way Manual Control Group
39	1	X20.107.000	Female Bayonet Support
40	2	X00.055.045	3/4" Fly Nut

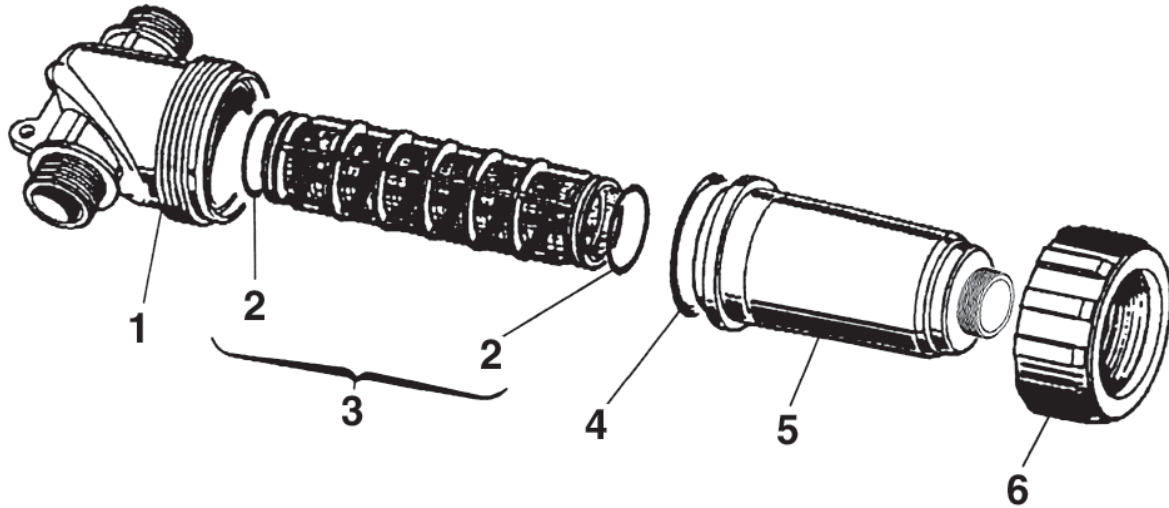
## 2 REPLACEMENT PARTS (CONTINUED)

### 2.10 LIQUID FLOW PATH MANUAL CONTROL VALVES PARTS LIST (For s/n 070030 - . . . .)

<u>REF.</u>	<u>QTY.</u>	<u>PART NO.</u>	<u>DESCRIPTION</u>
41	2	X00.055.046	Curved Union With R.H. D.17
42	2	X02.349.000	17 x 23 x 3 Flat Gasket
43	1	X02.355.000	Nylon Assembly Clamp
44	1	X02.278.030	Chain
45	As Req'd	X02.238.000	Hose D.30 Per Foot
46	As Req'd	X02.852.000	Hose D.30 Per Foot
47	As Req'd	X20.809.000	Hose D.25 Per Foot
48	As Req'd	X02.211.000	Hose D.16 Per Foot
49	As Req'd	X02.212.000	Hose D.19 Per Foot
51	As Req'd	X02.213.000	Hose D.135 Per Foot
53	2	XFC.021.5.023	Kobra Clamp 21.5 - 23
54	2	XFC.023.5.025	Kobra Clamp 23.5 - 25

## 2 REPLACEMENT PARTS (CONTINUED)

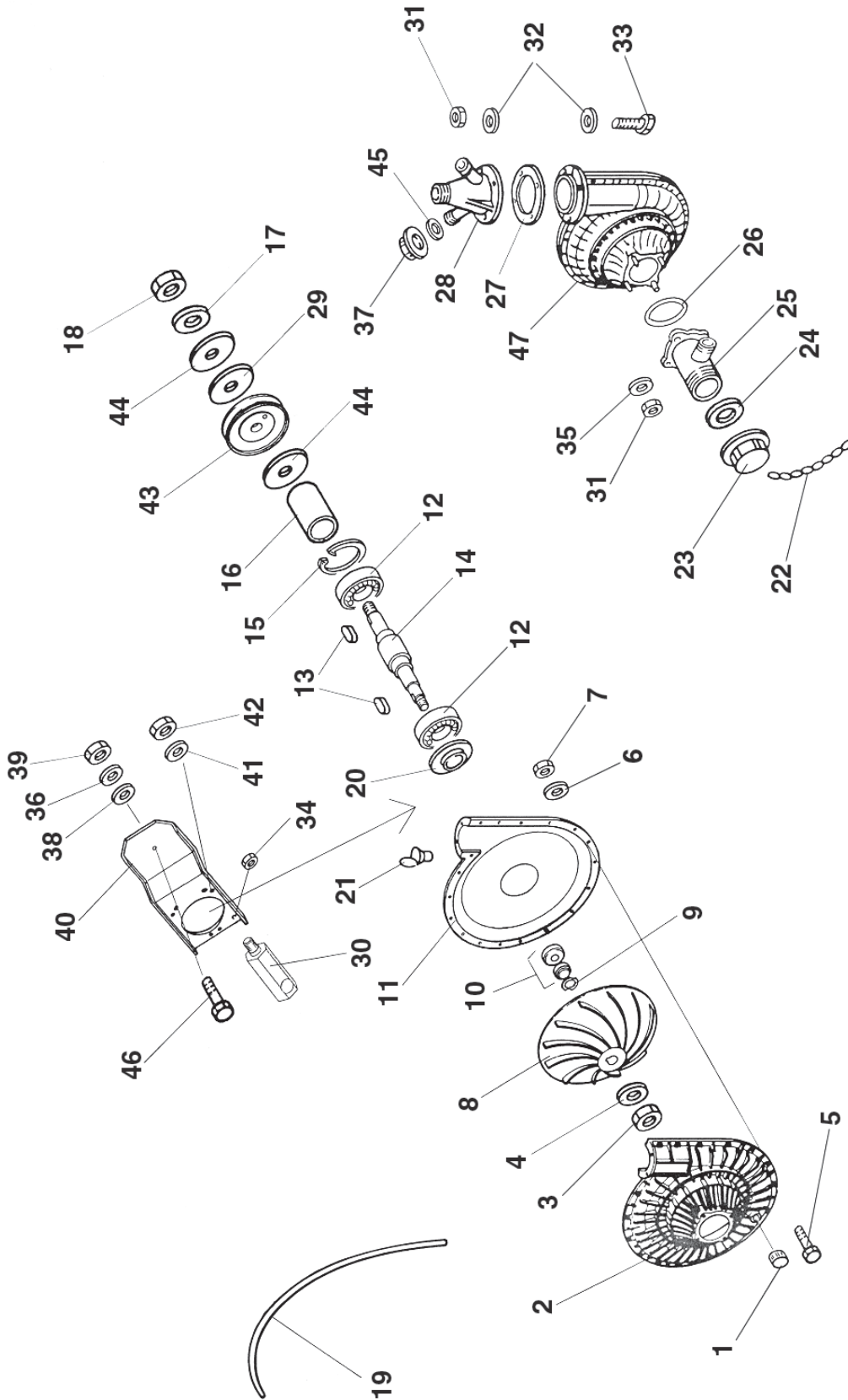
### 2.11 INLINE FILTER ASSEMBLY - 02.450.010



<u>REF.</u>	<u>QTY.</u>	<u>PART NO.</u>	<u>DESCRIPTION</u>
1	1	02.450.001	Body
2	2	OR3969353	O-Ring D.39.69 x 3.53
3	1	326003.030	Cartridge 50 Mesh (Blue)
3	Optional	326002.030	Cartridge 32 Mesh (White)
4	1	OR7463533	O-Ring D.74.63 x 5.33
5	1	02.450.011	Bowl
6	1	02.450.003	Back Nut

## 2 REPLACEMENT PARTS (CONTINUED)

### 2.12 PUMP & TENSION PULLEY ASSEMBLY



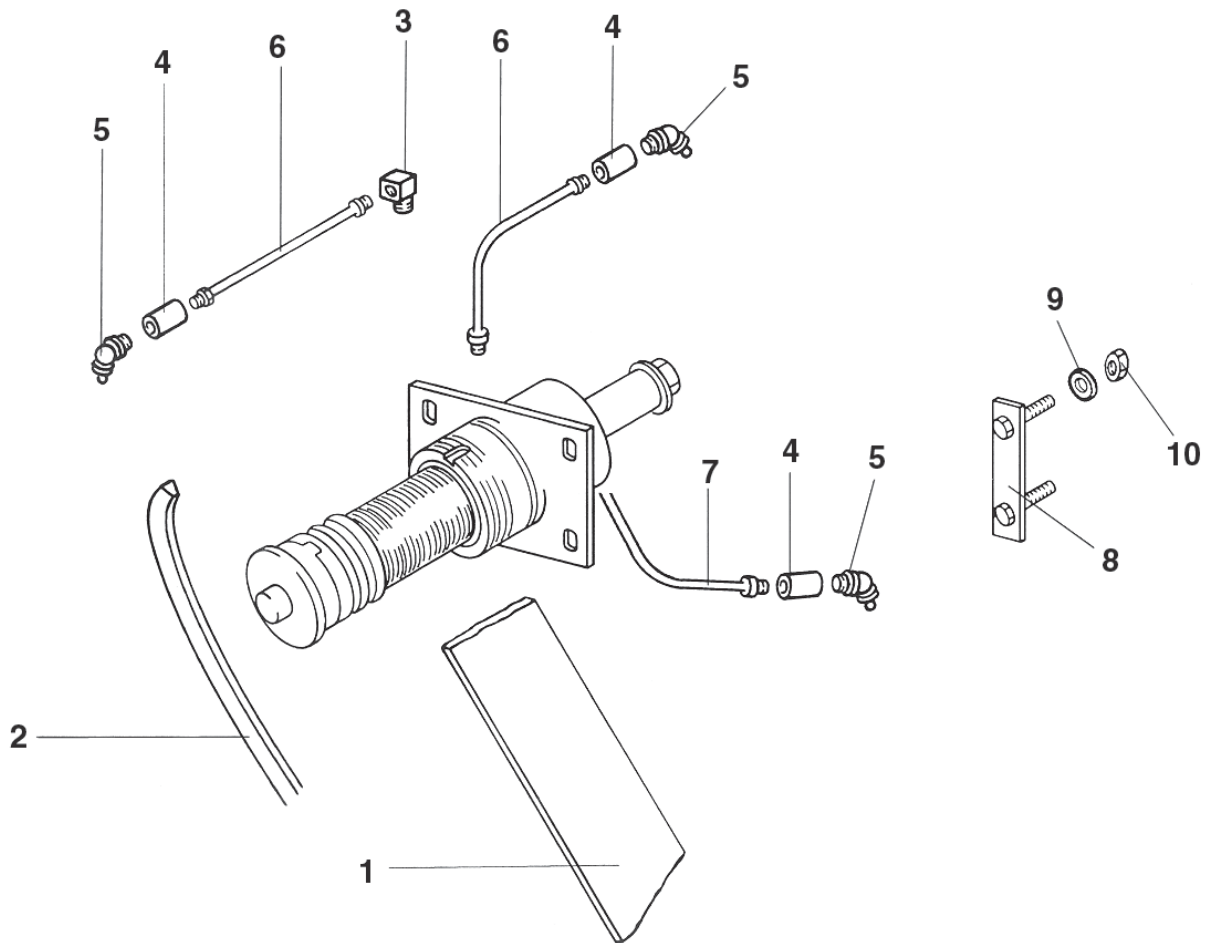
## 2 REPLACEMENT PARTS (CONTINUED)

### 2.12 PUMP & TENSION PULLEY ASSEMBLY PARTS LIST

<u>REF.</u>	<u>QTY.</u>	<u>PART NO.</u>	<u>DESCRIPTION</u>
1	2	TM.010.015	Plug 10 x 1.5
2	1	02.152.010	Housing, Front Half
3	1	DOT.10.5587	Brass Nut M10
4	1	RP.010.00I	Washer D.10 INCX
5	17	TCC.05.25	Screw M5 x 25
6	17	RP.005.000	Washer D.5
7	17	DOT.05.5587	Brass Nut M5
8	1	02.153.000	Impeller
9	1	02.114.000	Washer
10	1	00.085.024CS	Pump Seal Kit
11	1	02.151.010	Housing Back Half
12	2	6303-2RS	Bearing
13	2	L.05.05.10	Key 5 x 5 x 10
14	1	02.155.010	Shaft
15	1	IO.047.000	Circlip I.47
16	1	02.722.000	Bushing
17	1	RP.010.000	Washer D.10
18	1	D0.10.5588G	Nut M10
19	1	OR.C02.070	O-Ring CORD D.2 L=700
20	1	20.406.000	Cover
21	1	02.473.000	Oil Feeder M8
22	2	04.111.022	Chain L=220
23	1	02.120.000	Cap, Drain
24	1	02.130.000	Gasket
25	1	02.116.000	Two Way Tap
26	1	OR.003.181	O-Ring
27	1	02.179.000	Gasket
28	1	02.113.000	Three Way Tap
29	1	02.723.005	Washer 2mm
30	1	02.963.100	Support, Tensioner
31	8	DOT.06.5587	Brass Nut M6
32	8	RP.006.000	Washer D.6
33	4	TE.006.025T	Bolt M6 x 25
34	1	DA.010.0AG	Nut M10 x 1.5
35	3	RP.006.018	Washer D.18
36	2	RP.012.000	Washer D.12
37	1	TF.012.000	Cap
38	1	MT.012.000	Belleville Washer D.12
39	1	DA.012.0AG	Nut M12 x 1.75
40	1	02.978.000DX	Bracket
41	3	RP.008.024	Washer D.8 x 24
42	3	D0.08.5588G	Nut M8
43	1	02.723.002	Pulley D.88 x 1 3V
44	2	02.723.001	Washer, 3mm Pulley
45	1	OR.000.117	O-Ring 13.1 x 2.62
46	1	TE.012.040T	Bolt M12 x 40
47	1	02.157.050	Pump Assembly

## 2 REPLACEMENT PARTS (CONTINUED)

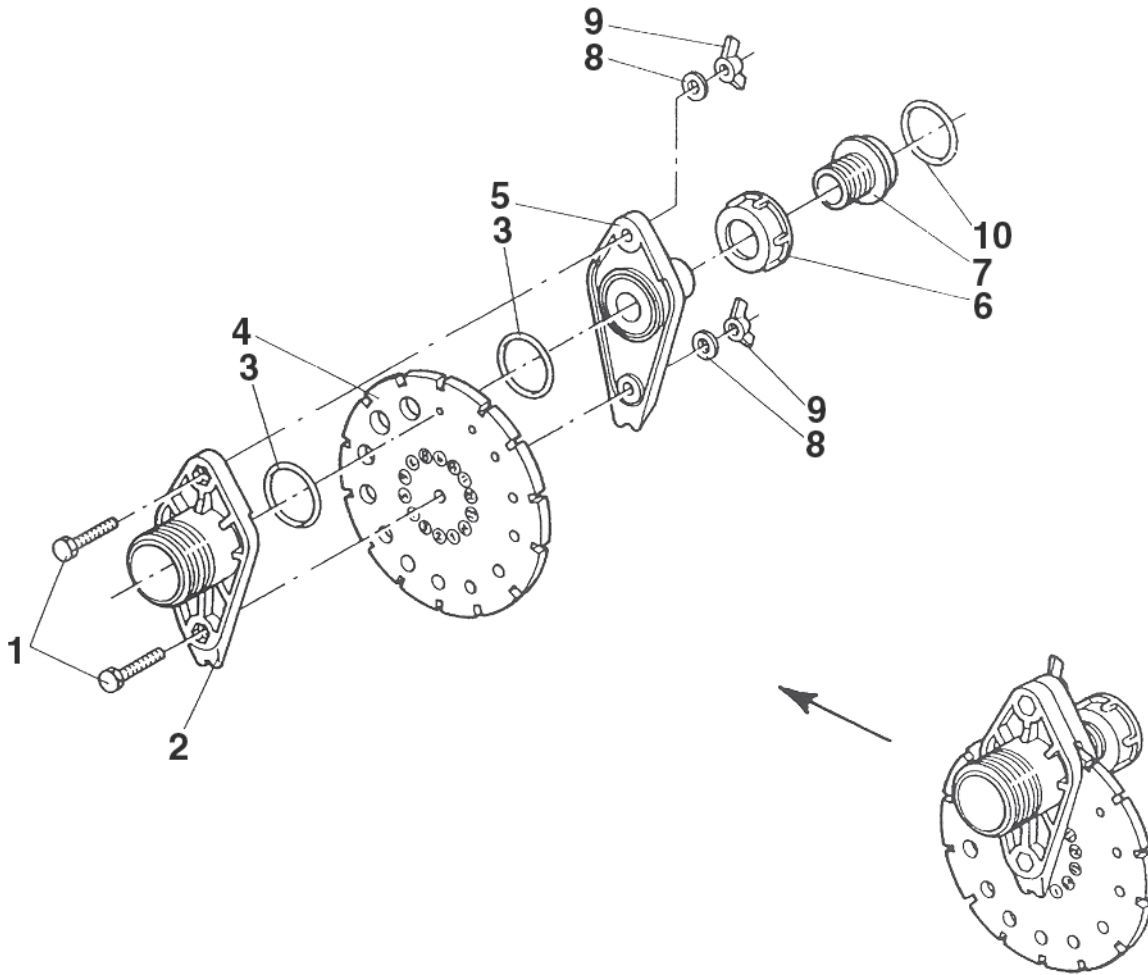
### 2.13 FAN SUPPORT



<u>REF.</u>	<u>QTY.</u>	<u>PART NO.</u>	<u>DESCRIPTION</u>
1	1	C0.650.J32	Drive Belt
2	1	C0.500.03V	V Belt
3	1	02.736.000	Connector 90o
4	3	02.737.000	Bushing s/n 001019 - 001273
4	1	02.737.000	Bushing s/n 010099 - -----
5	3	IS.010.001	Grease Zerk s/n 001019 - 001273
5	1	IS.010.001	Grease Zerk s/n 010099 - -----
6	2	02.738.040	Extension L=400 s/n 001019 - 001273
6	1	02.738.040	Extension L=400 s/n 010099 - -----
7	1	02.738.030	Extension L=300
8	2	02.945.000	Bolt Clamp
9	4	RP.012.036	Washer D.12 x 36
10	4	D0.12.5588G	Nut M12

## 2 REPLACEMENT PARTS (CONTINUED)

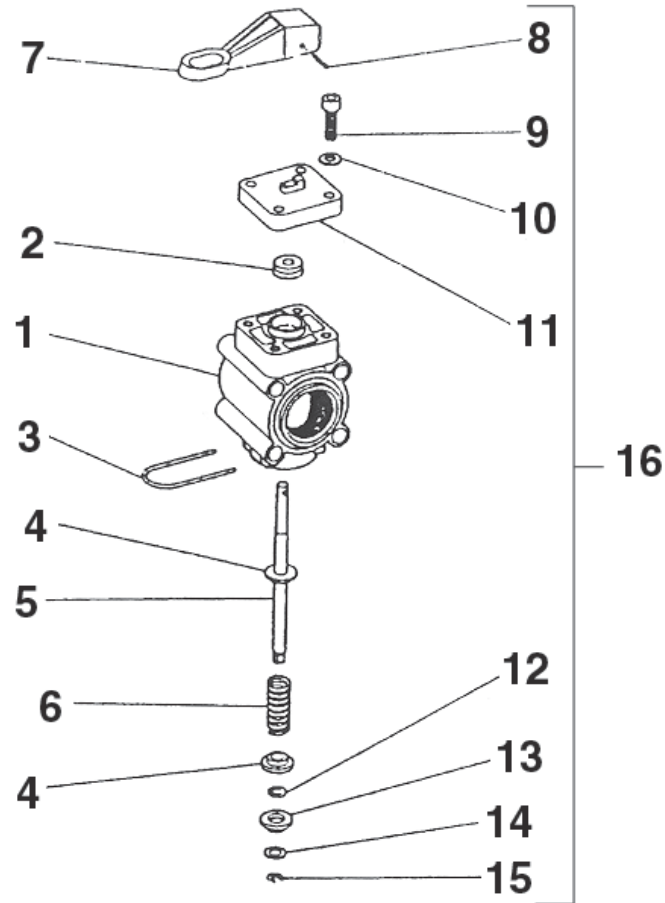
### 2.14 DIAL-A-RATE 0215000



<u>REF.</u>	<u>QTY.</u>	<u>PART NO.</u>	<u>DESCRIPTION</u>
1	2	TE.006.030I	Bolt M6 x 30
2	1	02.149.000	Body Male
3	3	OR.002.062	O-Ring D.15.6 x 1.78
4	1	02.148.000	Disc
5	1	02.147.000	Body Female
6	1	00.055.045	Nut
7	1	02.117.000	Adaptor Nipple
8	2	RP.006.000	Washer D.6
9	2	DE.OTI.006	Nut M6 Wing
10	1	02.349.000	Gasket

## 2 REPLACEMENT PARTS (CONTINUED)

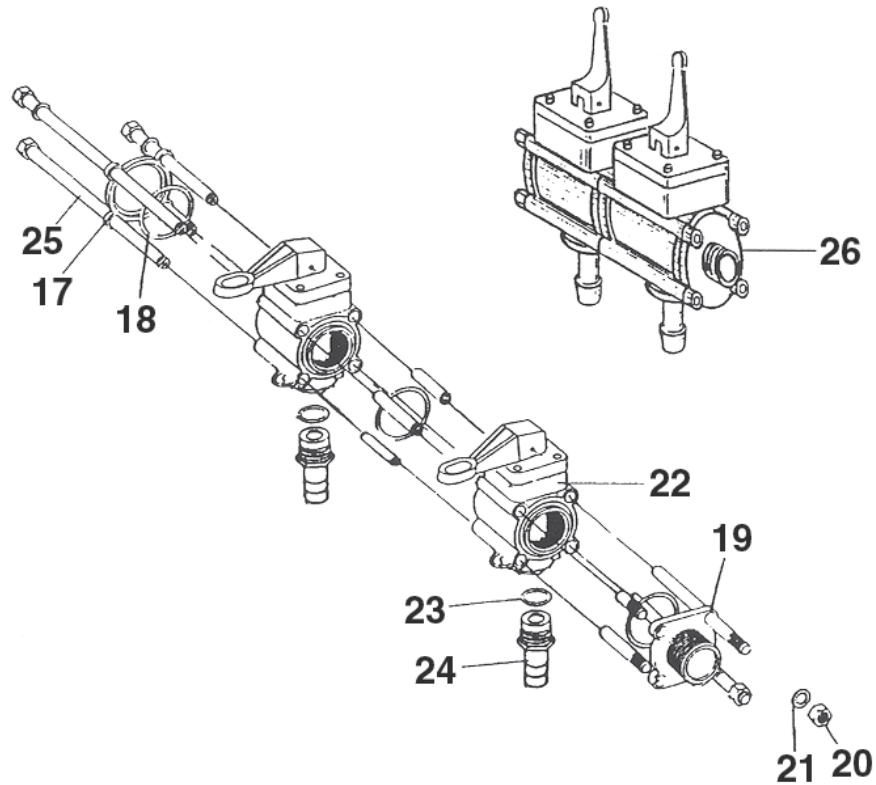
### 2.15 MANUALLY OPERATED VALVE



<u>REF.</u>	<u>QTY.</u>	<u>PART NO.</u>	<u>DESCRIPTION</u>
1	1	02.390.007	Body
2	4	02.390.008	Gasket
3	1	02.390.005	Clip
4	2	02.390.009	Cap
5	1	02.390.020	Pin
6	1	02.390.011	Spring
7	1	20.108.002	Lever for Manual Switch
8	1	SE.003.020	Spring Pin D.3 L=20
9	4	TCE.005.020	Cap Screw M5 L=20
10	4	RP.005.000	Washer D.5
11	1	02.390.021	Flange
12	1	02.390.016	O-Ring
13	1	02.390.015	Washer
14	1	02.390.014	Washer
15	1	02.390.013	Stop Ring
16	2	20.108.000	Valve, Manual Control

## 2 REPLACEMENT PARTS (CONTINUED)

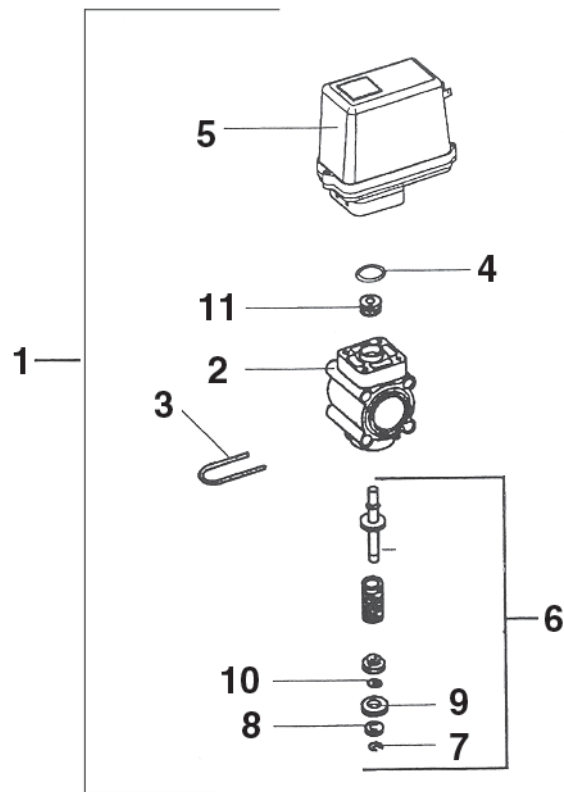
### 2.16 MANUAL COMMAND GROUP - 2 WAY



<u>REF.</u>	<u>QTY.</u>	<u>PART NO.</u>	<u>DESCRIPTION</u>
17	1	02.390.017	Seal Cap
18	3	OR.003.156	O-Ring
19	1	02.390.018	Connector
20	4	D0.08.5588G	Nut M8
21	8	RP.008.000	Washer D.8
22	2	20.108.000	Manually Operated Valve
23	2	OR.000.130	O-Ring
24	2	02.406.000	Nipple D.16
25	4	TCE.008.150	Bolt M8 x 150
26	1	20.108.01C	Manual Command Group Assy.

## 2 REPLACEMENT PARTS (CONTINUED)

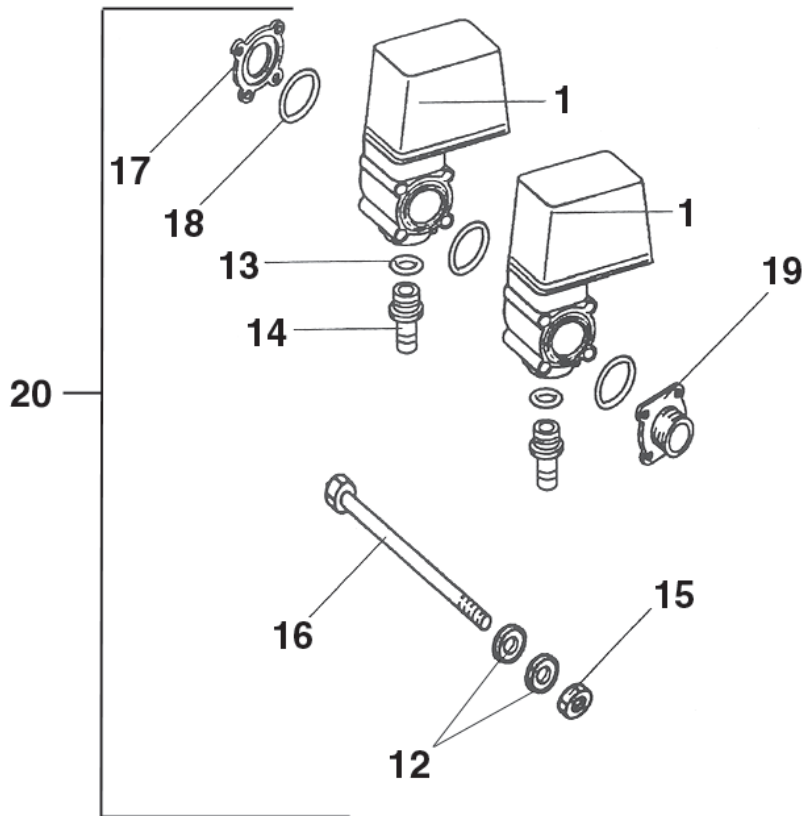
### 2.17 OPTIONAL SOLENOID CONTROL



<u>REF.</u>	<u>QTY.</u>	<u>PART NO.</u>	<u>DESCRIPTION</u>
1	1	02.390.029	Solenoid Valve
2	1	02.390.007	Body
3	1	02.390.005	Clip
4	1	OR.002.075	O-Ring D.18.77 x 1.78
5	1	02.390.028	Motor
6	1	02.390.027	Stem Assembly
7	1	02.390.013	Lock Clip
8	1	02.390.014	Washer
9	1	02.390.015	Washer
10	1	02.390.026	Washer
11	1	02.390.008	Seal D.6 x 17 x 6 Viton

## 2 REPLACEMENT PARTS (CONTINUED)

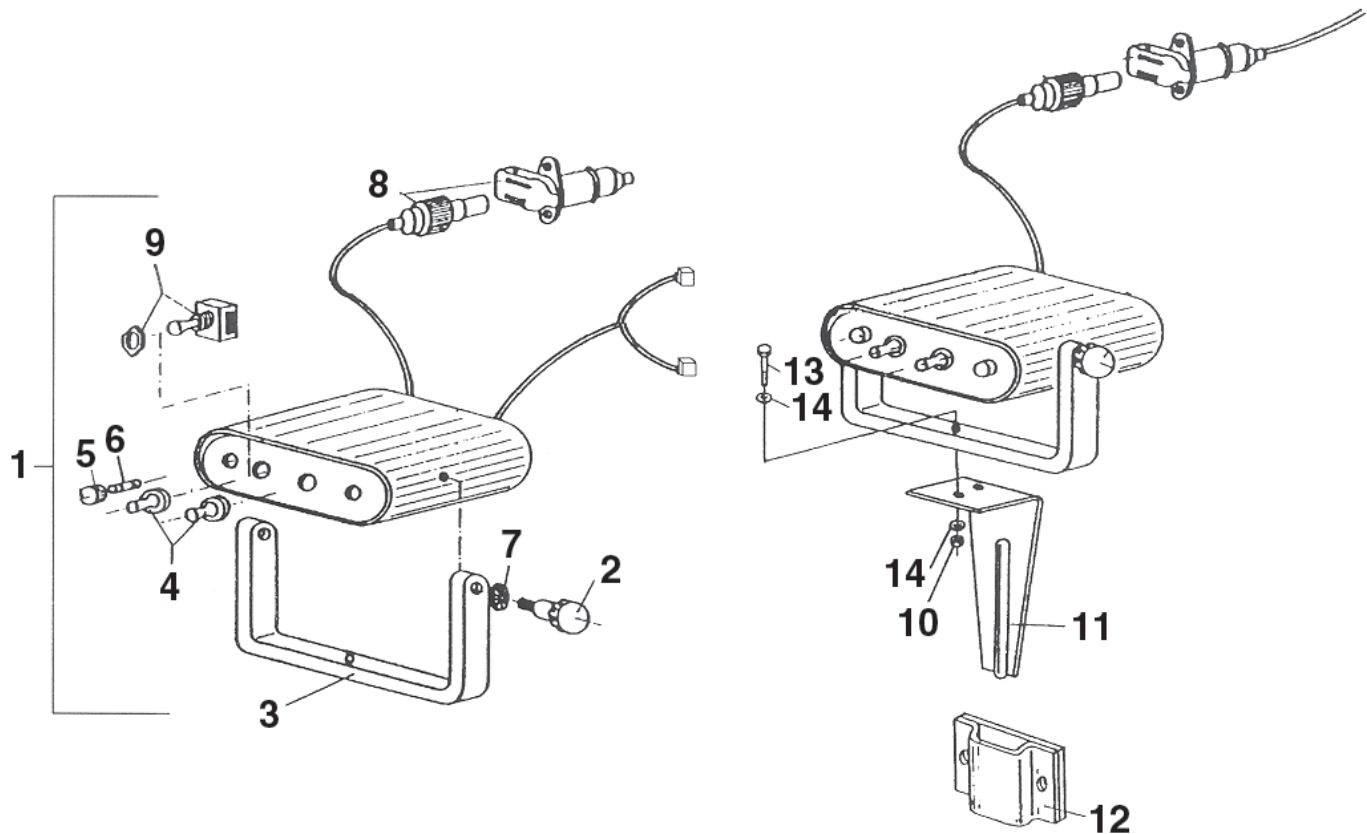
### 2.18 OPTIONAL SOLENOID COMMAND GROUP



<u>REF.</u>	<u>QTY.</u>	<u>PART NO.</u>	<u>DESCRIPTION</u>
12	8	RP.008.000	Washer D.8
13	2	OR.000.130	O-Ring D.22.22 x 2.62
14	2	02.406.000	Hose Barb D.16
15	4	D0.08.5588G	Nut M8
16	4	TCE.008.150	Bolt M8 x 150
17	1	02.390.017	Flange
18	3	OR.003.156	O-Ring D.39 x 2.62
19	1	02.390.018	Connector
20	1	02.390.08C	Solenoid Command Group Assembly

## 2 REPLACEMENT PARTS (CONTINUED)

### 2.19 OPTIONAL CONTROL BOX FOR SOLENOID VALVE



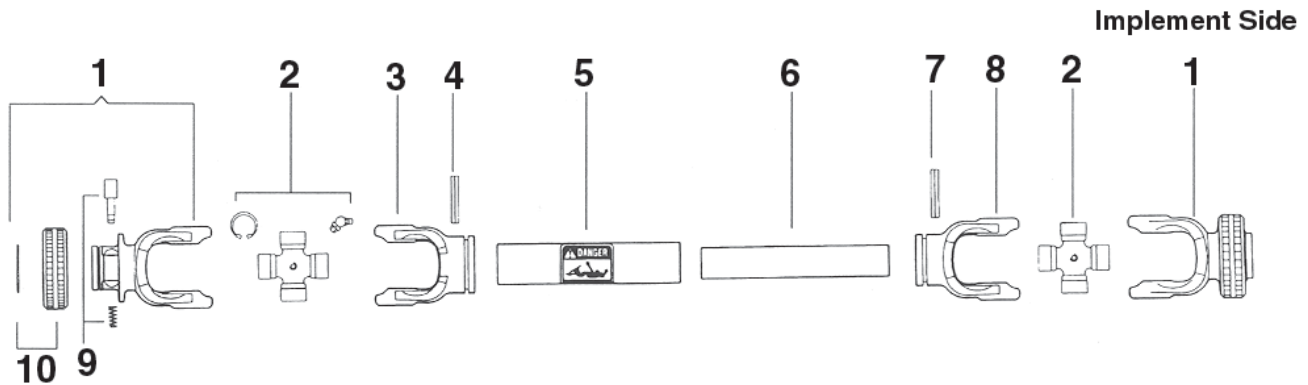
<u>REF.</u>	<u>QTY.</u>	<u>PART NO.</u>	<u>DESCRIPTION</u>
1	1	02.391.07C	Control Box Assembly L/Ref. 8
2	2	02.391.007	Knob, Bolt
3	1	02.391.006	Mounting Bracket for Box
4	2	02.391.001	Switch Cap
5	2	02.391.003	Panel Fuse Holder
6	2	02.391.004	Fuse 1.25 AMP
7	2	RD.006.000	Washer
8	1	02.391.005	Plug & Socket Kit
9	2	02.391.002	Double Pole Switch

### KIT FOR CONTROL SOLENOID VALVE

10	1	DA.008.0AG	Nut
11	1	20.111.000	Mounting Bracket Electric Control
12	1	20.107.000	Support Control Assembly
13	1	TE.008.025T	Bolt
14	2	RP.008.024	Washer D.8 x 24

## 2 REPLACEMENT PARTS (CONTINUED)

### 2.20 BONDIOLI & PAVESI PTO DRIVELINE 7105061FFT077



<u>REF.</u>	<u>QTY.</u>	<u>PART NO.</u>	<u>DESCRIPTION</u>
1	1	572050351	RS Collar Yoke 1-3/8 6-Spline
2	2	41205	Cross Kit Assembly #5
3	1	204056860	Outer Tube Yoke #5
4	1	34105300	Roll Pin O.T. #5
5	1	225700860	Outer Drive Tube #5
6	1	225110860	Inner Drive Tube #5
7	1	341002000	Roll Pin I.T. #5
8	1	204056861	Inner Tube Yoke #5
9	2	403000001	Quick Disconnect Pin Kit
10	2	240003051	RS Collar 5-6
11	1	572050361	RS Collar Yoke 1-3/8 6-Spline
	1	5F05086FF	Shield Kit With Bearings

### 3 LIMITED WARRANTY



GEARMORE, INC., warrants each new Gearmore product to be free from defects in material and workmanship for a period of twelve (12) months from date of purchase to the original purchaser. This warranty shall not apply to implements or parts that have been subject to misuse, negligence, accident, or that have been altered in any way.

Our obligation shall be limited to repairing or replacement of any part, provided that such part is returned within thirty (30) days from date of failure to Gearmore through the dealer from whom the purchase was made, transportation charges prepaid.

This warranty shall not be interpreted to render us liable for injury or damages of any kind or nature, direct, consequential or contingent, to person or property. This warranty does not extend to loss of crops, loss because of delay in harvesting or any other expenses, for any other reasons.

Gearmore in no way warrants engines, tires, or other trade accessories, since these items are warranted separately by these respective manufacturers.

Gearmore reserves the right to make improvements in design or changes in specification at any time, without incurring any obligations to owners or units previously sold.

Please be advised that all warranty work done by your dealer must be approved by Gearmore before work begins.

GEARMORE, INC.  
13477 Benson Ave.  
Chino, CA 91710

Always refer to and heed machine operating warning decals on machine.

*The serial number of this product is stored in our computer database, thus submitting a warranty registration card is not required.*