



DUSTER

**Operation, Service
& Parts Manual For
Model G2V**

May 1994

TABLE OF CONTENTS

Introduction	1
Operating Instructions	1
Lubrication/Cleaning & Storage	2
Safety Information	2
Frame & Fan Assembly	3-4
Gearbox Assembly	5-6
Hopper & Control Assembly	7-8
Driveline	9
Limited Warranty	10

Date of Purchase: _____

Model Number: _____

Serial Number _____

INTRODUCTION

We welcome you as an owner of a Gearmore duster. Please read the following instructions and refer to them when required:

GENERAL INFORMATION

Application Rates:	Adjustable from 8 to 100 pounds per acre.
Hopper:	Formed steel and treated with anti-corrosive paint. <i>(See Note)</i>
Blower:	Dynamic balanced steel fan in aluminum housing.
Distributors:	Two completely adjustable 360 degree nozzles.

BEFORE OPERATING YOUR DUSTER

1. Inspect for damage and loose or missing parts. make sure all fittings and drive components are secure.
2. Lubrication - *See Lubrication Section*
3. Check hopper for any foreign objects.

TO OPERATE DUSTER

Carefully follow all instructions as stated in this operation manual. This includes safety, assembly, operation and maintenance of the duster.

1. Connect duster to the tractor 3-pt. hitch.
2. Push flow adjusting lever away from the tractor, which is the closed position.
3. Fill hopper with material being used. **Note: Sulfur Powder Only**
The use of any mineral base material such as copper sulfate will cause damage to the fan and housing assembly.
4. Start engine and engage tractor P.T.O.
5. Pull lever toward the tractor, which increases the powder flow.
6. After locating the delivery position that meets your required application rate, set the adjustable gray handle so the operator can easily return to that position.

Note: The small gray plastic handle is only a "stop set", thus little locking pressure is required.

OPERATING INSTRUCTIONS

LUBRICATION

DRIVESHAFT: The driveshaft must be lubricated before the duster is put into use. After that, grease when needed. It is also necessary, from time to time, to untelescope the driveshaft to clean and regrease tubing.

GEARBOX: Check gearbox oil level through sight gauge. Add SAE 90 weight oil when required.

AGITATOR: Under hopper and above blower is an extended grease zerk for lubricating agitator. Grease *weekly* or more often if required.

CLEANING & STORAGE

1. *Do not* let dust build up on blower fan.
2. *Do not* leave material in hopper for long periods of time.
3. Clean duster thoroughly before storing.
4. Check duster for needed repairs before time to dust again.

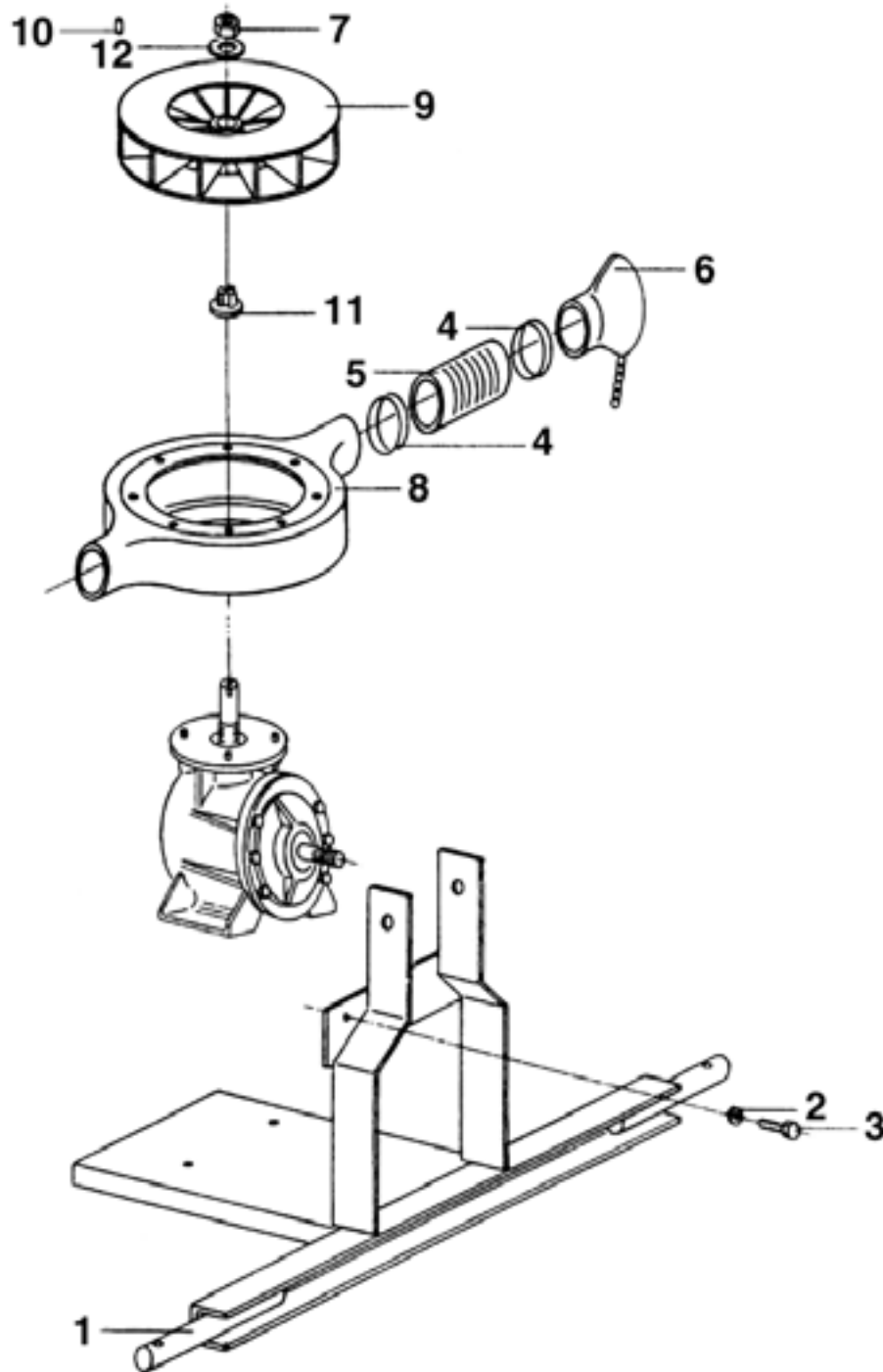
SAFETY TIPS

- Never* run P.T.O. at speeds in excess of 540 R.P.M.
- Duster should be operated only by qualified personnel.
- Always* fill duster slowly to avoid spillage.
- When starting duster, maintain a safe distance from moving parts.
- Never* leave duster unattended while it is running.
- Keep hands, feet and clothing away from all moving parts.
- Handle powders carefully; follow manufacturer's directions for application and rates.



OPERATING THE TRACTOR PTO AT OVER 540 R.P.M. OR APPLYING RATES OF LESS THAN 8 POUNDS OF SULFUR PER ACRE COULD CAUSE THE SULFUR TO MELT

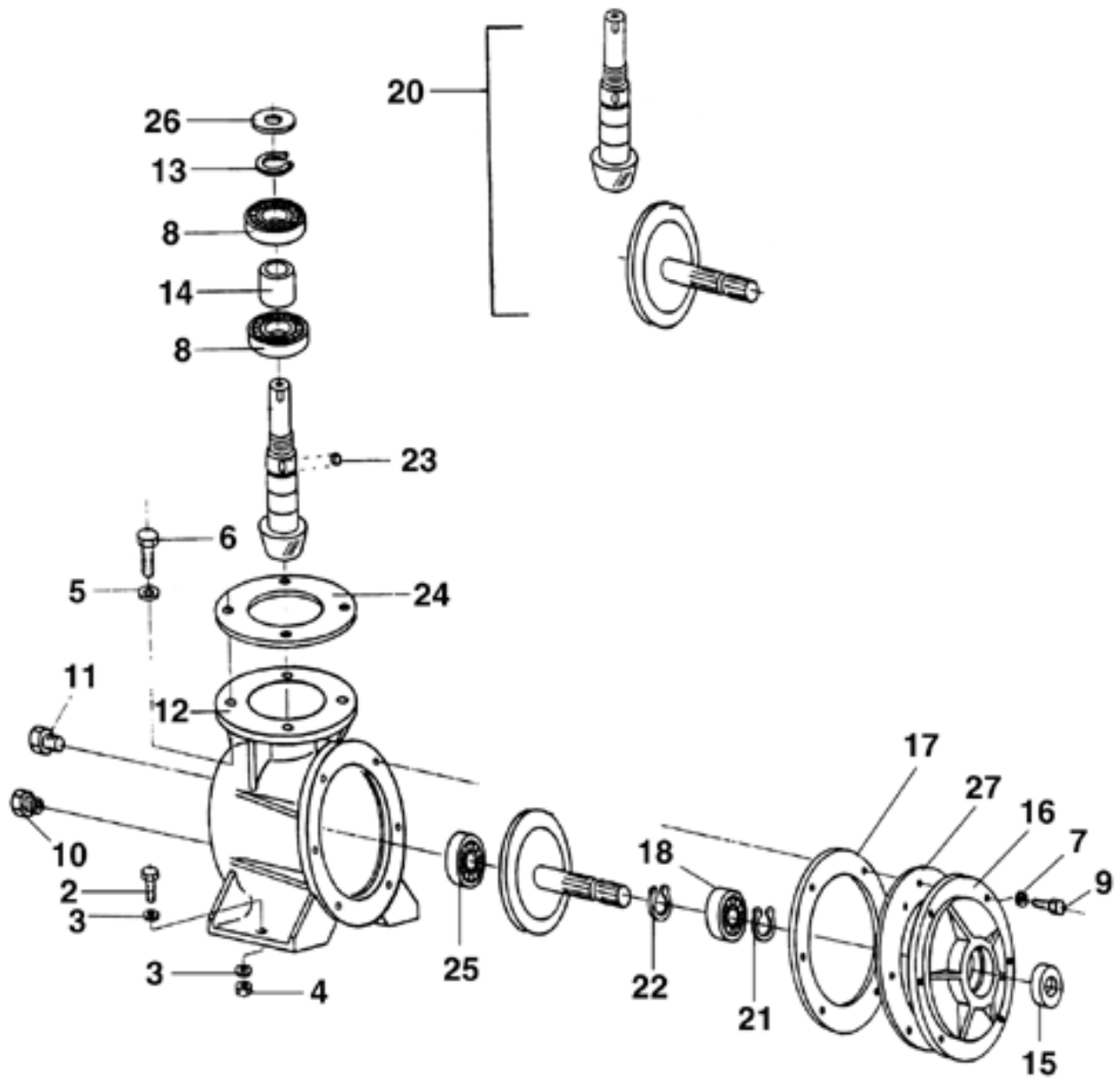
G2V FRAME & FAN ASSEMBLY



G2V FRAME & FAN ASSEMBLY

<u>REF. #</u>	<u>QTY.</u>	<u>PART NO.</u>	<u>DESCRIPTION</u>
1	1	S0003000	Main Frame
2	2	RP010000	Washer D.10
3	2	TE010030T	Bolt M10 x 30
4	4	S0051000	Clamp
5	2	S0050000	Rubber Boot
6	2	S0049000	Nozzle
7	1	DA0220BF	Nut M1.5
8	1	S0047000	Housing Blower Fan
9	1	S0074000	Fan D.280
10	1	S0092000	Rubber Lug
11	1	S0103000	Locknut
12	1	S0363000	Special Washer

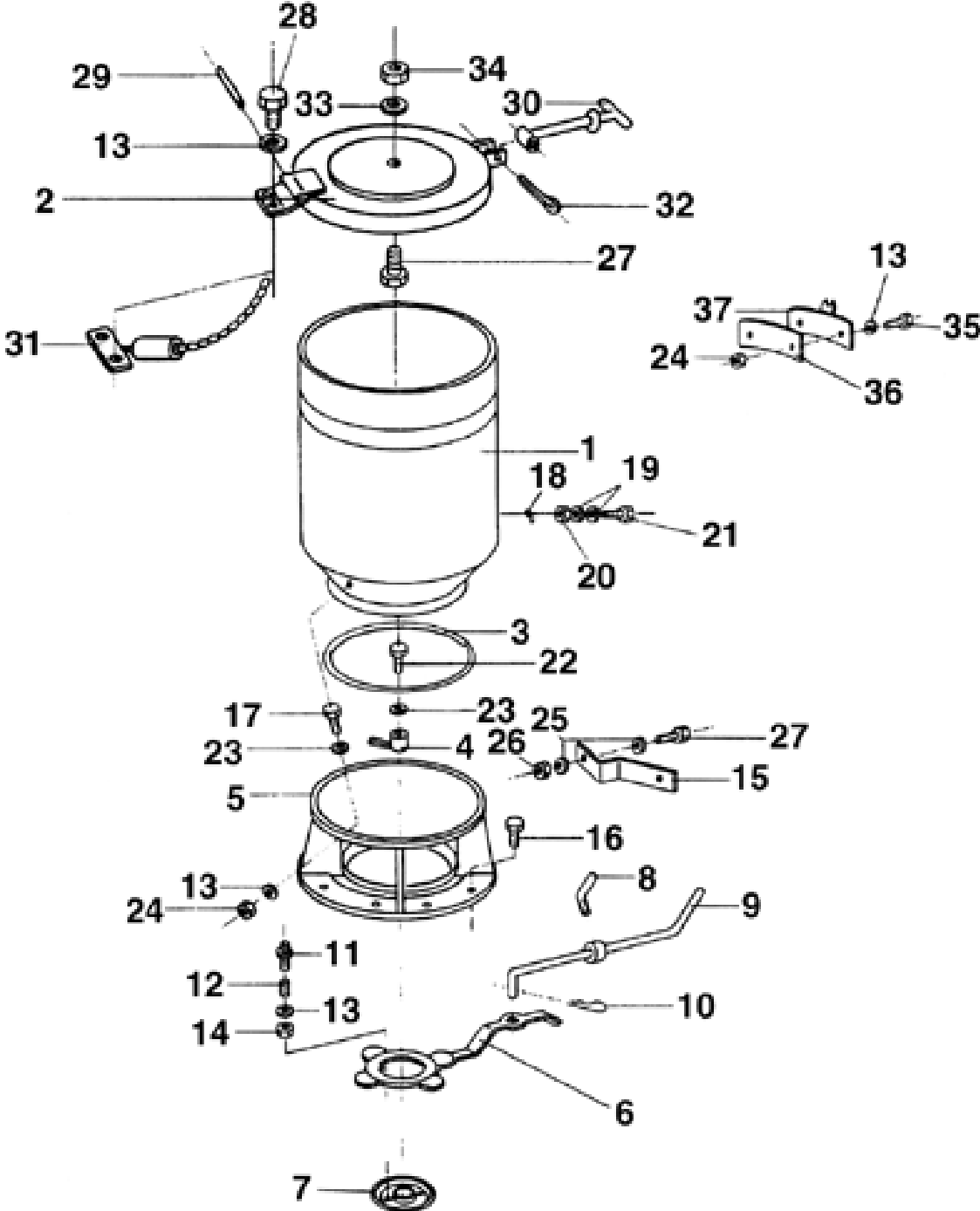
G2V GEARBOX ASSEMBLY



G2V GEARBOX ASSEMBLY

<u>REF. #</u>	<u>QTY.</u>	<u>PART NO.</u>	<u>DESCRIPTION</u>
1	1	S0109000	Gearbox Assembly
2	2	TE010030T	Bolt M10 x 30
3	4	RP010000	Washer D.10
4	2	D0105588G	Nut M10
5	4	RP008000	Washer D.8
6	4	TE008030T	Bolt M8 x 30
7	6	RD008000	Lock Washer
8	2	6305	Bearing
9	6	TE008025T	Bolt M8 x 25
10	1	S0087000	Oil Level Plug
11	1	TM012000	Oil Fill Plug
12	1	S0026000	Gearbox Housing
13	1	E0025000	Circlip D.25
14	1	S0033000	Spacer
15	1	35X52X7	Oil Seal
16	1	S0016000	Front Cover
17	1	S0015005	Gasket
18	1	6007	Bearing
20	1	S0098000	Ring & Pinion Gear
21	1	E0035000	Circlip D.35
22	1	I0062000	Circlip D.62
23	1	L060625	Key 6 x 6 x 25
24	1	S0085000	Gasket
25	1	6205	Bearing
26	1	25X47X7	Oil Seal
27	1	S0015002	Gasket

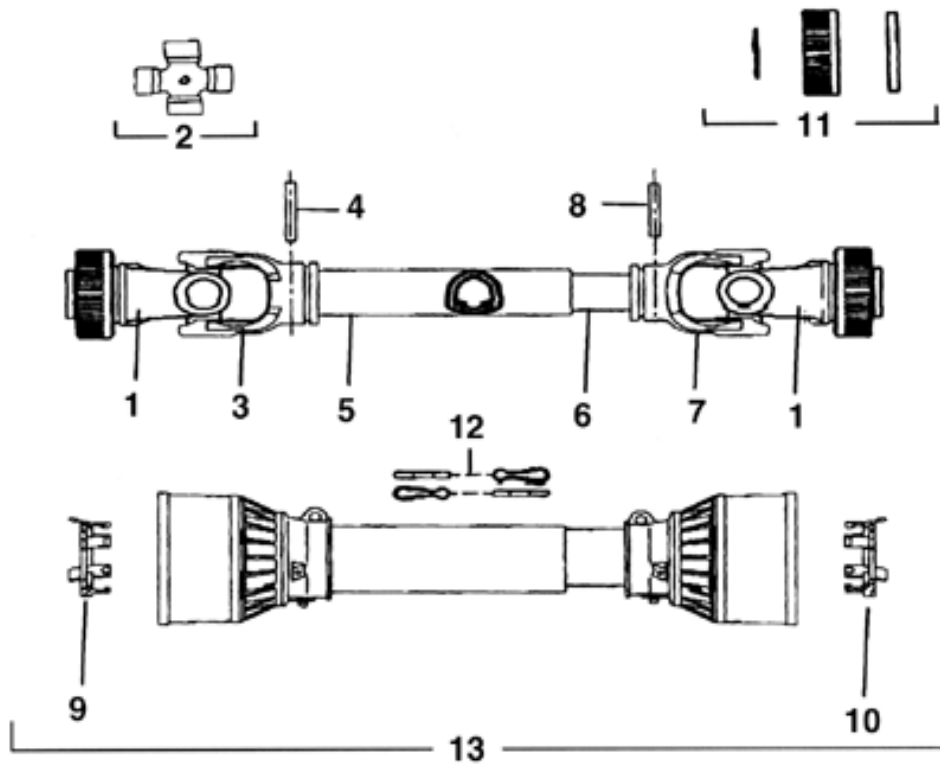
G2V HOPPER & CONTROL ASSEMBLY



G2V HOPPER & CONTROL ASSEMBLY

<u>REF. #</u>	<u>QTY.</u>	<u>PART NO.</u>	<u>DESCRIPTION</u>
1	1	S008101A	Hopper
2	1	S0114000	Metal Lid w/Hinge
3	1	S0057000	O-ring
4	1	S0076000	Agitator
5	1	S0080000	Hopper Support
6	1	S0077000	Shutter
7	1	S0082000	Washer
8	1	S0036000	Control Stop Bolt
9	1	S0099000	Control Handle
10	1	S0100002	Hair Pin
11	2	S0083000	Bolt
12	2	S0211000	Spring
13	9	RP008000	Washer D.8
14	2	DA0080AG	Nut
15	1	S0039000	Support, Control Handle
16	8	TE010030T	Bolt M10 x 30
17	4	TE008020T	Bolt M8 x 20
18	2	S0100001	Chain Hook
19	4	RP004000	Washer D.4
20	2	D0045588G	Nut
21	2	TE004014T	Bolt M4 x 14
22	1	TE008025T	Bolt M8 x 25
23	5	RP008024	Washer D.8 x 24
24	6	D0085588G	Nut
25	2	RP006000	Washer D.6
26	1	D0065588G	Nut
27	2	TE006025T	Bolt M6 x 25
28	2	TE008016T	Bolt M8 x 16
29	1	S0228000	Hinge Pin
30	2	S0229000	Rubber Catch
31	1	S0115000	Anchor Latch
32	1	S0230000	Cotter Pin
33	1	RP006018	Washer D.18
34	1	DA0060AG	Nut
35	2	TE008016T	Bolt M8 x 16
36	1	S0111000	Spacer
37	1	S0112000	Latching Bracket

G2V GEARBOX ASSEMBLY



<u>REF. #</u>	<u>QTY.</u>	<u>PART NO.</u>	<u>DESCRIPTION</u>
1	2	572020351	RS Yoke
2	2	41202	#2 Cross Kit
3	1	204026851	Yoke, Outer Tube
4	1	341048000	Roll Pin
5	1	225050635	Outer Drive Tube
6	1	225040635	Inner Drive Tube
7	1	204026852	Yoke, Inner Tube
8	1	341036000	Roll Pin
9	1	255020005	Bearing Outer Shield
10	1	255020006	Bearing Inner Shield
11	2	240002451	RS Collar Kit
12	2	252000001	Safety Chain
13	1	5N02076NN	Complete Shield

LIMITED WARRANTY



GEARMORE, INC., warrants each new Gearmore product to be free from defects in material and workmanship for a period of twelve (12) months from date of purchase to the original purchaser. This warranty shall not apply to implements or parts that have been subject to misuse, negligence, accident, or that have been altered in any way.

Our obligation shall be limited to repairing or replacement of any part, provided that such part is returned within thirty (30) days from date of failure to Gearmore through the dealer from whom the purchase was made, transportation charges prepaid.

This warranty shall not be interpreted to render us liable for injury or damages of any kind or nature, direct, consequential or contingent, to person or property. This warranty does not extend to loss of crops, loss because of delay in harvesting or any other expenses, for any other reasons.

Gearmore in no way warrants engines, tires, or other trade accessories, since these items are warranted separately by these respective manufacturers.

Gearmore reserves the right to make improvements in design or changes in specification at any time, without incurring any obligations to owners or units previously sold.

GEARMORE, INC.
13477 Benson Ave.
Chino, CA 91710

Always refer to and heed machine operating warning decals on machine.

The serial number of this product is stored in our computer database, thus submitting a warranty registration card is not required.