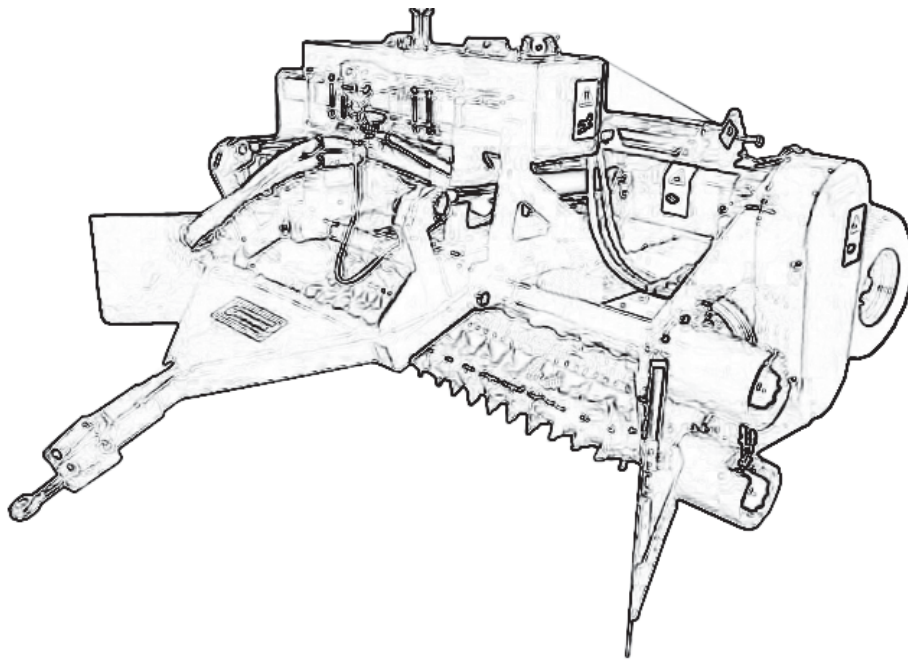


GEARMORE INC.

ORCHARD BRUSH PROCESSOR



**Parts Manual
For Model WBS225**

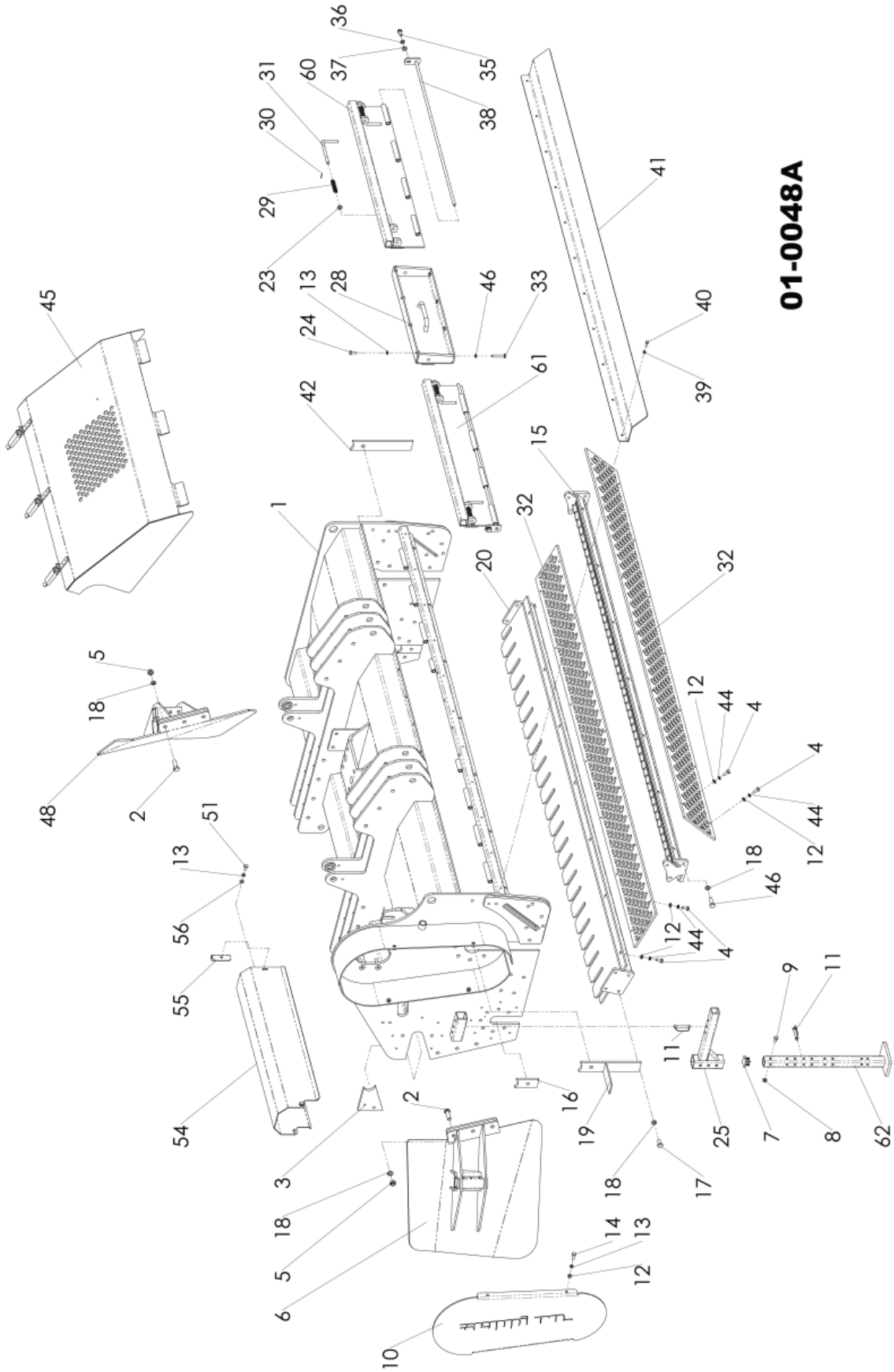
July 2009

TABLE OF CONTENTS

<u>CODE</u>	<u>DESCRIPTION</u>	<u>PAGE</u>
01-0048A	Frame	1 - 3
02-0026	Rotor	4 - 5
03-0031	Gearbox (1000 RPM).....	6 - 7
03-0099	Transmission.....	8 - 10
04-0044	Pull Hitch	11 - 13
05-0006	Rear Roller	14 - 15
06-0006	Rear Gauge Wheels	16 - 17
11-0001	Decals	18
12-0026	Hydraulics	19 - 21
15-0002	Pick-Up Rotors.....	22 - 23
AN9US1	Driveline & Clutches	24 - 25
16-0001	Safety Decals.....	26 - 27
17-0001	Limited Warranty	28

01-0048A

FRAME ASSEMBLY



01-0048A

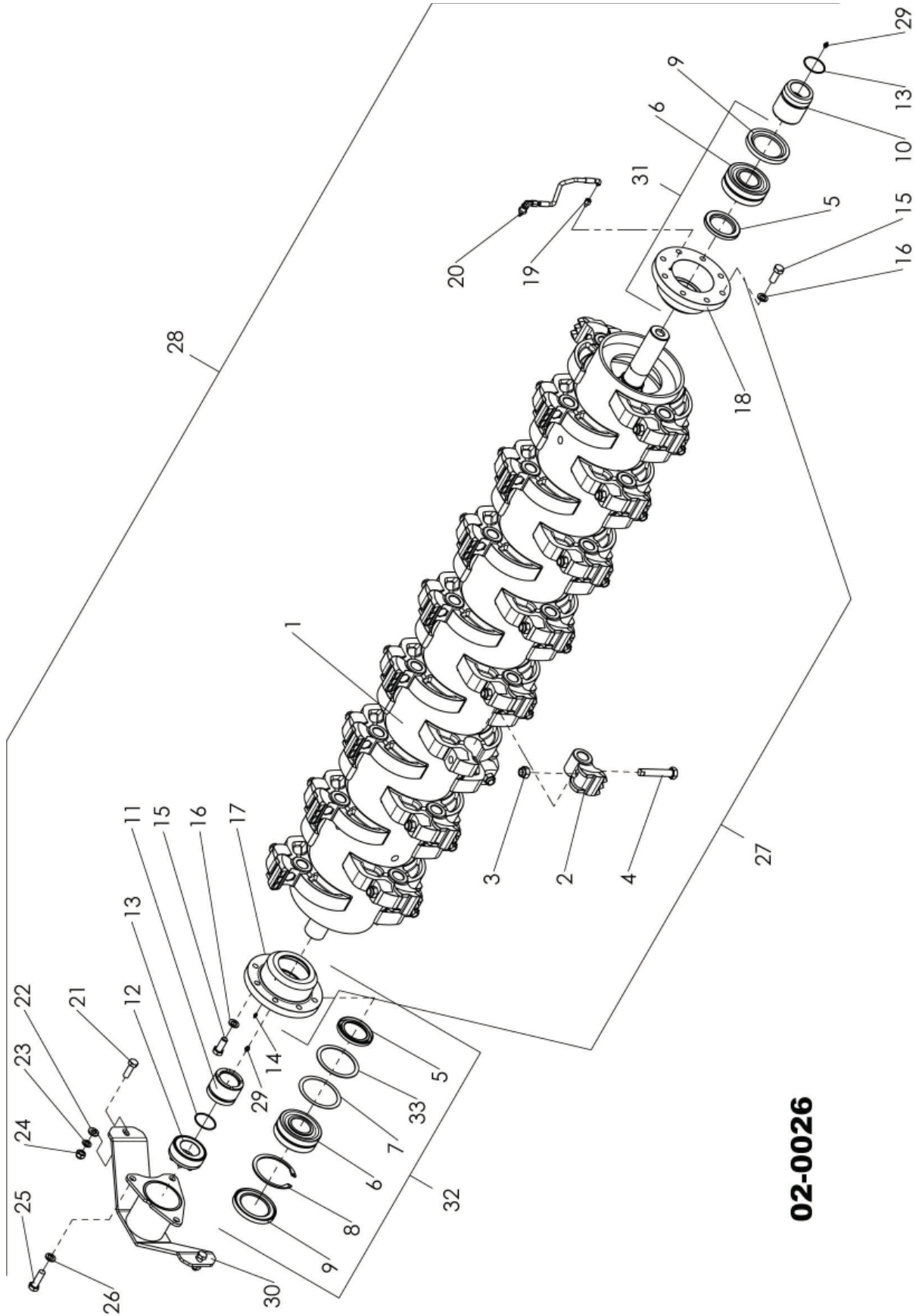
01-0048 FRAME ASSEMBLY PART NUMBERS

<u>REF #</u>	<u>QTY.</u>	<u>PART NUMBER</u>	<u>DESCRIPTION</u>
1	1	14001294	Frame Assembly
2	8	96616528	Bolt TE M12 x 40 UNI 5739 8.8 ZN
3	1	14001152	Cpl. Closing
4	4	96607623	Bolt TE M14 x 045 UNI 5737 8.8 ZN
5	8	97972021	Low Self Block Nut M12-6S UNI 7474
6	1	14001292	Cpl. Plate SX
7	2	14311001	Cap F. Big Support QUIA 40 x 40
8	2	97971821	Low Self Block Nut M10-6S UNI 7474
9	2	96607521	Bolt TE M10 x 020 UNI 5739 8.8 ZN
10	1	14010034	Cover For WBS
11	2	14311010	Pin For Support
12	4	97093210	Smooth Washer Carpent X M10 UNI 5714
13	4	97494931	Washer ELSP ASA B-27-10.2 x 18.1 x 2.2 ZN
14	4	96607721	Bolt TE M10 x 030 UNI 5739 8.8 ZN
15			
16	2	14001126	Feather For WBS
17	8	96612221	Bolt TE M 14 x 030 UNI 5739 8.8 ZN
18	12	97495131	Washer ELSP ASA B-27-14.2 x 24.1 x 3 ZN
19	1	14001175	Feather For WBS
20	1	14001198	Rake Cpl. 225
23			
24	6	96007621	Bolt TE M10 x 030 UNI 5739 8.8 ZN
25	11	14010059	Washer ESSP ASA B-27-10.2 x 18.1 x 2.2 ZN
28	1	14001312	Center Panel
29	4	14001274	Spring
30	4	97253270	Roll Pin 03 x 30
31	4	14001273	Support
32	1	14015134	Fine Mulching Screen
33	11	96608321	Low Self Block Nut M10-6S UNI 7474
35	2	96609821	Bolt TE M12 x 025 UNI 5739 8.8 ZN
36	2	97495031	Washer ELSP ASA B-27-12.2 x 21.2 x 2.5 ZN
37	6	97093211	Washer
38	2	14001327	Cpl. Sh. (L=225)
39	9	97494831	Washer ELSP ASA B-27-8.2 x 14.8 x 2 ZN
40	9	96605621	Bolt TE M 08 x 025 UNI 5739 8.8 ZN
41	1	14001289	Cpl. Plate L=225
42	1	14001128	Feather For WBS
44	6	97494934	Washer ELSP ASA B-27-8.2 x 14.8 x 2 AN
45	1	14010063	Protection For Hyd. Comp.
46			

01-0048 FRAME ASSEMBLY PART NUMBERS (CONTINUED)

<u>REF #</u>	<u>QTY.</u>	<u>PART NUMBER</u>	<u>DESCRIPTION</u>
48	1	14001304	Cpl. Plate DX
50	4	97494931	Washer ELSP ASA B-27-10.2 x 18.1 x 2.2 ZN
51	4	96607521	Bolt TE M 10 x 020 UNI 5739 8.8 ZN
54	1	14010013	P.T.O. Shaft Prot.
55	2	17903015	P.T.O. Shaft Prot. Supp. F. Gearb. MIDIFOR
56	4	97095111	Smooth Washer UNI 6592 10.5 x 21 x 2.0 ZN
57	5	97093210	Smooth Washer Carpent x M10 UNI5714 ZN
60	1	14001315	Door R.H.
61	1	14001318	Door L.H.
62	2	14311003	Cpl Support WBS Drilling on 4 Sides

02-0026 ROTOR ASSEMBLY

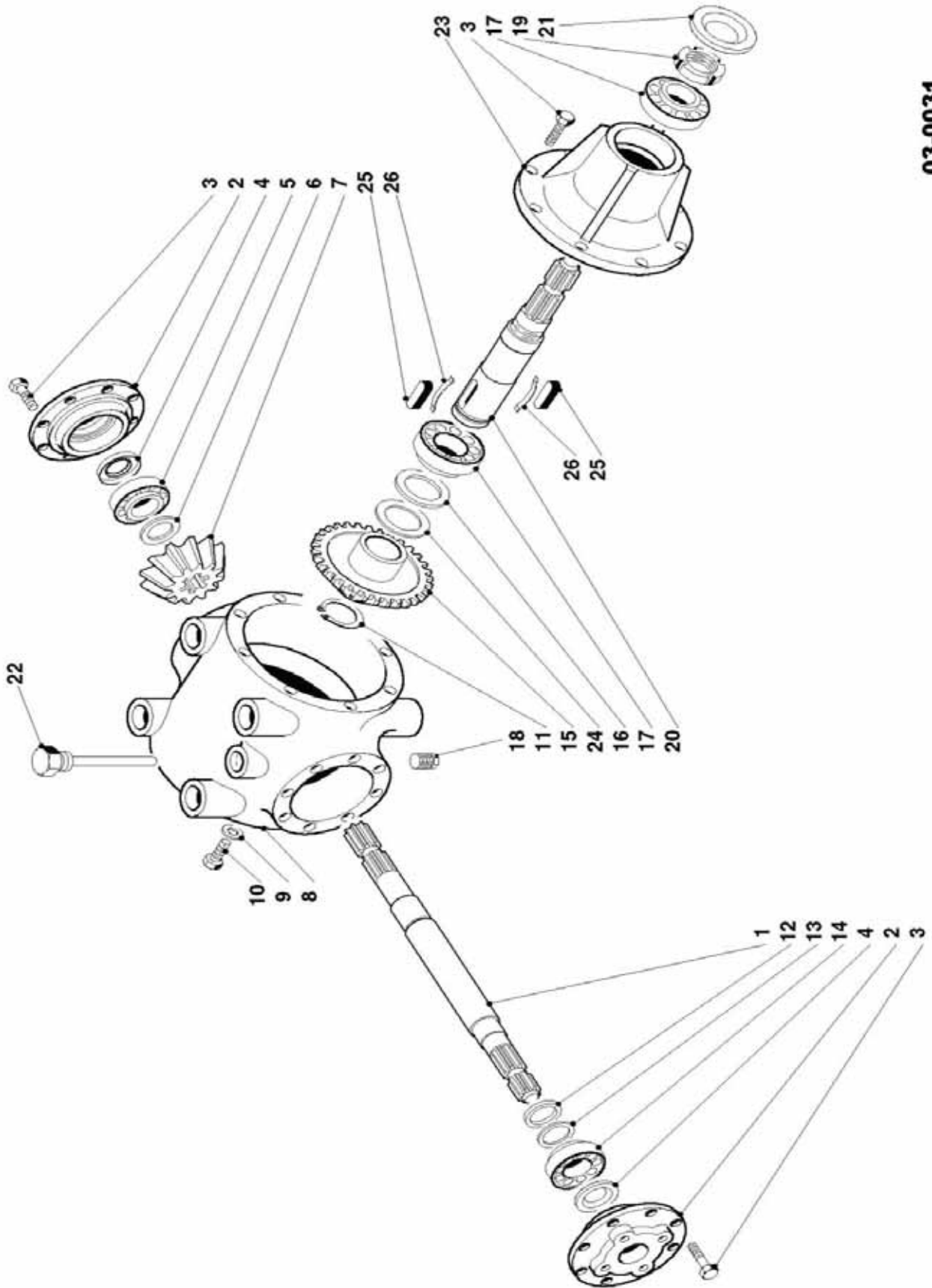


02-0026

02-0026 ROTOR ASSEMBLY PART NUMBERS

<u>REF #</u>	<u>QTY.</u>	<u>PART NUMBER</u>	<u>DESCRIPTION</u>
1	1	17902214	Rotor Midiforst DT 225
2	36	18202041	Hammer With 3 Plac. Increas.
3	36	48020116	Special Nut M18 x 1.5 DIN 98 Class 10
4	36	48020116	Special Bolt M18 x 1.5 x 100 12.9 Black
5	2	19503016	Oil Seal 65 x 100 x 10
6	2	19702059	Bearing 22311 E 55 x 120 x 43 OR.RULLI
7	2	98047716	Spacer 100 x 120 x 2
8	2	96876276	El Ring F.Holes 120 x 4
9	2	19702060	Oil Seal 80 x 120 x 13
10	1	19702055	Spacer LATO Pulley L=89
11	1	19202069	Spacer LATO Pulley L=60
12	1	19103016	Taper Lock Viblock VK 160 55 x 85
13	2	97284280	Oil Seal OR 139/3218 55.25 x 2.62
14	1	97036611	Grease Nipple UNI 7663 AM 6-5.8
15	16	96614627	Bolt TE 16 x 040 UNI 5739 8.8 Black
16	16	97495234	Washer ELSP ASA B-27-16.2 x 27.4 x 3.5 N
17	1	19702054	Support Bearing For Rotor W.Pipe Dia. 120
18	1	19702130	Support Bearing For Rotor No Pipe Dia. 120
19			
20	1	17902217	Grease Nipple L=280
21	2	96614221	Bolt TE M14 x 045 UNI 5737 8.8 ZN
22	2	97093311	Smooth Washer M14 UNI 5714 ZN
23	2	97495131	Washer ELSP ASA B-27-14.2 x 24.1 x 3 ZN
24	2	97972321	Low Self Block Nut M14-6S UNI 7474
25			
26			
27	1	14002076	Cpl. Rotor WBS Pick-Up 225
28	1	14002073	Rotor WBS Pick-Up L=225 U F MOD 08
29	2	97036711	Grease Nipple UNI 7663 AM M8 x 1.25
30	1	14002079	Cover
31	1	19702058	Cpl. Supp. For Rotor Pulley Side
32	1	19702057	Cpl. Supp. For Rotor Short Side Hub
33	1	98048316	Spacer 100 x 120 x 1

03-0031 GEARBOX 1000 RPM



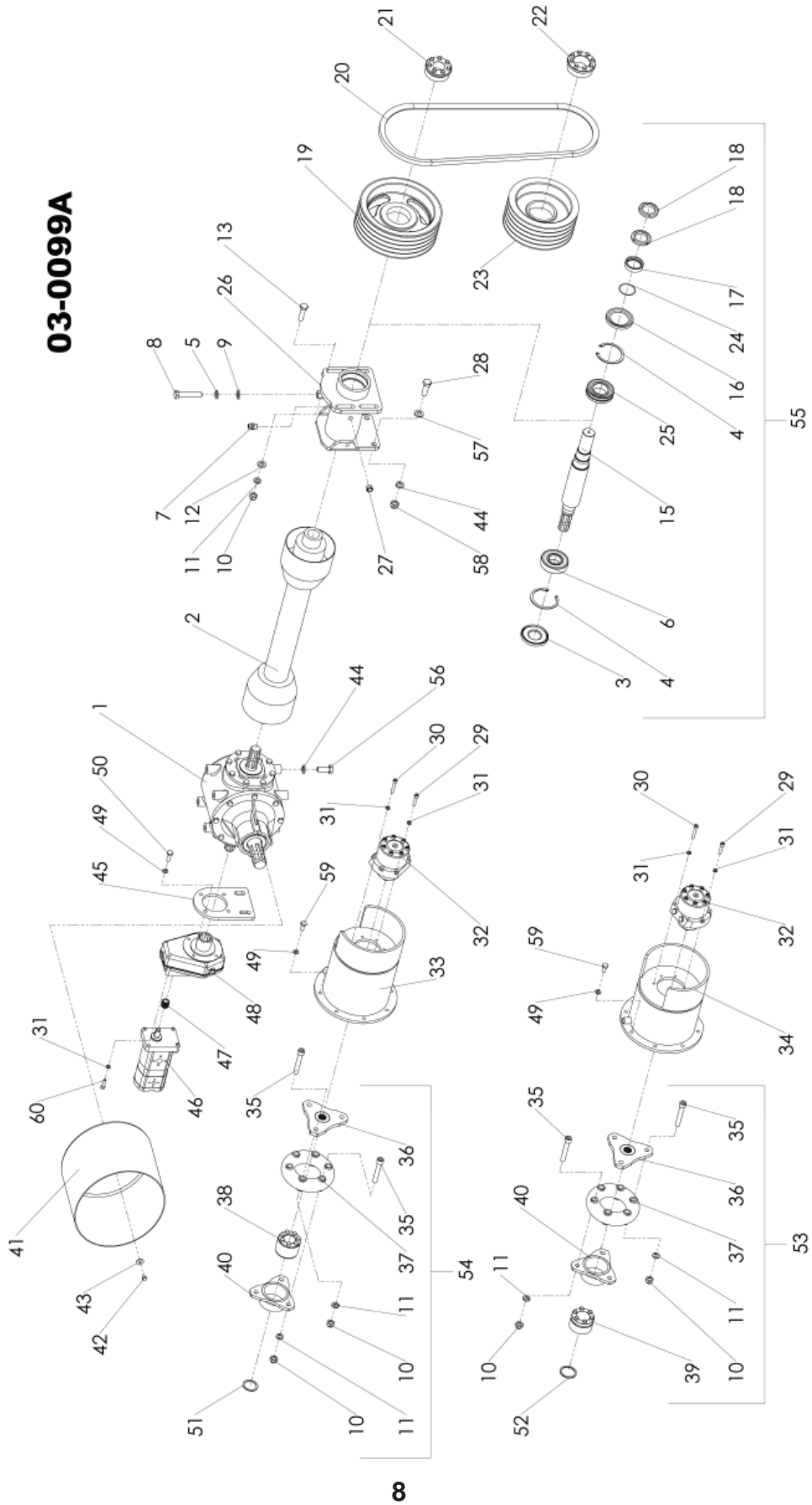
03-0031

03-0031 GEARBOX 1000 RPM PART NUMBERS

<u>REF #</u>	<u>QTY.</u>	<u>PART NUMBER</u>	<u>DESCRIPTION</u>
1	1	48030687	Cross Spl. Shaft 1 3/8" Z6 (0.269.3003.00)
2	2		End Cap
3	24	48030788	Bolt TE M10 x 022 UNI 5739 8.8 Black
4	2	15003059	Oil Seal 35 x 62 x 10
5	1	48030800	Bearing 30307 (8.0.9.00129) Con
6	1	48030281	Spacer 35.3 x 48 (0.259.7500.00)
7	1	48030979	Conic Pinion Z=19 M=6.3 (0.269.5000.00)
8	1	48030905	Gearbox T 2 (0.269.0701.00) TL2698
9	2	48030904	Cop. With Washer 8.4 x 14 x 1 (8.3.3.00384)
10	2	48030790	Bolt TE M08 x 014 UNI 5739 8.8 Black
11	1	48030791	Saf. Ring F. Shaft 55 H=3 (8.5.1.00928)
12	1	48030792	Spacer 51.5 x 40.3 x 2.5 (0.244.7525.00)
13	1	48030369	Spacer 51.5 x 40.3 x 0.5 (0.244.7505.00)
14	1	48030010	Bearing 30208 40 x 80 x 19.25 Rul. Con
15	1	48030793	Taper Crown Wh.Z=31M=6.3(0.269.6206.00)
16	1	48030927	Spacer 50.3 x 70.3 x 0.3 (0.712.7503.00)
17	2	48030932	Bearing 30210 (8.0.9.00888)
18	1	48403232	Cap Ext. Hex. 1/2" GAS (8.6.5.00203)
19	1	48030794	Setting Nut M50 x 1.5 (0.781.7102.00)
20	1	48030795	Splined Shaft 1 3/4" Z6 (0.292.2203.00)
21	1	48030916	Oil Seal L.P. 45 x 90 x 10 (8.7.3.01059)
22	1	48030911	Cap TCST - 12 1/2 (0.721.7103.00)
23	1	48030915	Ext. Shaft AC (0.269.1306.00) /TL269B
24	1	48030958	Spacer 50.3 x 70.3 x 1.0 (0.712.7510.00)
25	2	48030961	Feather F.F.W. (0.269.7119.00)
26	2	48030960	Spring F.Free Wh. (0.269.7120.00)

03-0099 TRANSMISSION ASSEMBLY

03-0099A



03-0099 TRANSMISSION ASSEMBLY PART NUMBERS

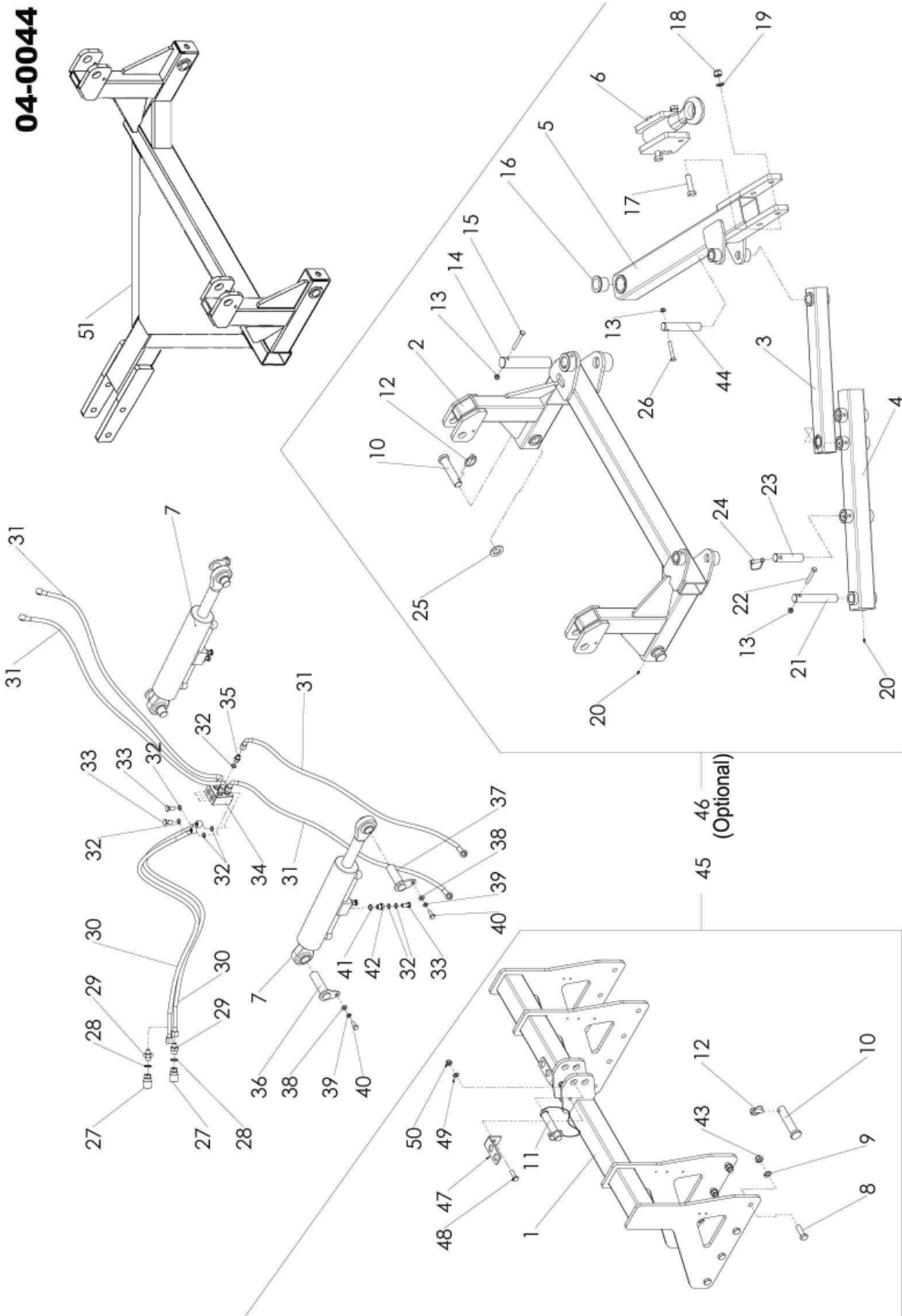
<u>REF #</u>	<u>QTY.</u>	<u>PART NUMBER</u>	<u>DESCRIPTION</u>
1	1	17903007	Gear TL 269B R=1:1.63 RL (9.269.221.00)
2	1	17903019	Comer PTO V60xMF-DT 225 Gear+Ext SH
3	1	17903210	Oil Seal L.P. 45 x 90 x 10
4	2	96875176	El. Ring F.Holes 90 x 3
5	1	97495231	Washer
6	1	17903003	Bearing 6308 2RS
7	1	48030003	Cap 3/8"G (8.6.7.00161) NPT
8	1	96601521	Bolt TE M16 x 80 UNI 5739 8.8 ZN
9	3	97093611	Smooth Washer Carpent. x M16 UNI5714ZN
10	6	97972321	Low Self Block Nut M14-6S UNI 7474
11	6	97495131	Washer ELSP ASA B-27-14.2 x 24.1 x 3 ZN
12	4	97093311	Smooth Washer M14 UNI 5714 ZN
13	4	96612021	Bolt TE M14 x 055 UNI 5737 8.8 ZN
15	1	17903212	Ext. Shaft MIDIF. DT MECC MOD 06
16	1	13002068	Oil Seal 60 x 90 x 10
17	1	17903151	Spacer For Extension Shaft
18	2	19503015	Self Block Lock Ring M45 x 1.5
19	1	19703015	Pulley 5SPB 265
20	5	17003002	Belt SPBX 1750
21	1	15003054	Taper Lock Viblock VK 156 40 x 80 Std
22	1	19103016	Taper Lock Viblock VK 160 55 x 85
23	1	19103017	Pulley 5SPB 225 FORO 85
24	1	97283880	Oil Seal OR 135/3193 48.91 x 2.62
25	1	13002042	Bearing 22210 E 50 x 90 x 23
26	1	17903215	Housing MIDIFORST DT MECC. MOD 07
27	3	48030246	Cap Ext. Hex 3/8 NPT (8.6.5.00006)
28	2	96616528	Bolt TE M 16 x 050 UNI 5737 8.8
29	4	96691121	Bolt TCEI M 08 x 050 UNI 5931 8.8 ZN
30	8	96690923	Bolt TCEI M 08 x 040 UNI 5931 8.8 ZN
31	12	97494831	Washer ELSP ASA B-27-08.2 x 14.8 x 2 ZN
32	2	46012014	Hydraulic Motor BRZL 200 S14
33	1	14003080	Interface For Hydraulic Motor
34	1	14003072	Interface For Hydraulic Motor
35	6	96696721	Bolt TCEI M14 x 90 UNI 5933 8.8 ZN
36	1	14003084	Cpl. Flange For Ext. Shaft FC
37	1	21003012	Transmission Elast. Coupling F.Sav
38	1	17903005	Taper Lock Viblock VK 112 40 x 75
39	1	13003170	Taper Lock Viblock VK 700 45 x 75
40	1	21003038	Flanged Support For Transmission Sav
41	1	14010057	Oval Protection 32/401
42	4	96605321	Bolt TE M 08 x 012 UNI 5739 8.8 ZN
43	4	97094921	Smooth Washer M8 9 x 24 x 2 ZN
44	7	97495231	Washer ELSP AS B-27-16.2 x 27.4 x 3.5 ZN

03-0099 TRANSMISSION ASSEMBLY PART NUMBERS (CONTINUED)

<u>REF #</u>	<u>QTY.</u>	<u>PART NUMBER</u>	<u>DESCRIPTION</u>
45	1	14001216	Flange
46	1	42012025	Pump V=26+9 CC DX
47	1	42012104	Shaft Scanalato MO 2/14 LIN 4 CON 1:8
48	1	42012095	Gearbox Borelli
49	4	97494931	Washer ELSP ASA B-27-10.2 x 18.1 x 2.2 ZN
50	4	96607721	Bolt TE M10 x 030 UNI 5739 8.8 ZN
51	1	98045516	Cap
52	14	98048616	Bolt TE M10 x 025 UNI 5739 8.8 ZN
53	1	14003083	Lower Hyd. Drive Coupling
54	1	14003095	Upper Hyd. Drive Coupling
55	1	17903216	Shaft CPL MIDIF - DT MECC. MOD 07
56	4	96614621	Bolt TE M16 x 040 UNI 5739 8.8 ZN
57	18	97093611	Washer ELSP ASA B-27-10.2 x 18.1 x 2.2 ZN
58	2	97972521	Low Self Block Nut M16-6S UNI 7474
59	14	96607621	Bolt TE M10 x 25 UNI 5739 8.8 ZN
60	4	96690721	BoltTCEI M8 x 30 UNI 5931 8.8 ZN

04-0044 PULL HITCH

04-0044



45
46
(Optional)

04-0044 PULL HITCH ASSEMBLY PART NUMBERS

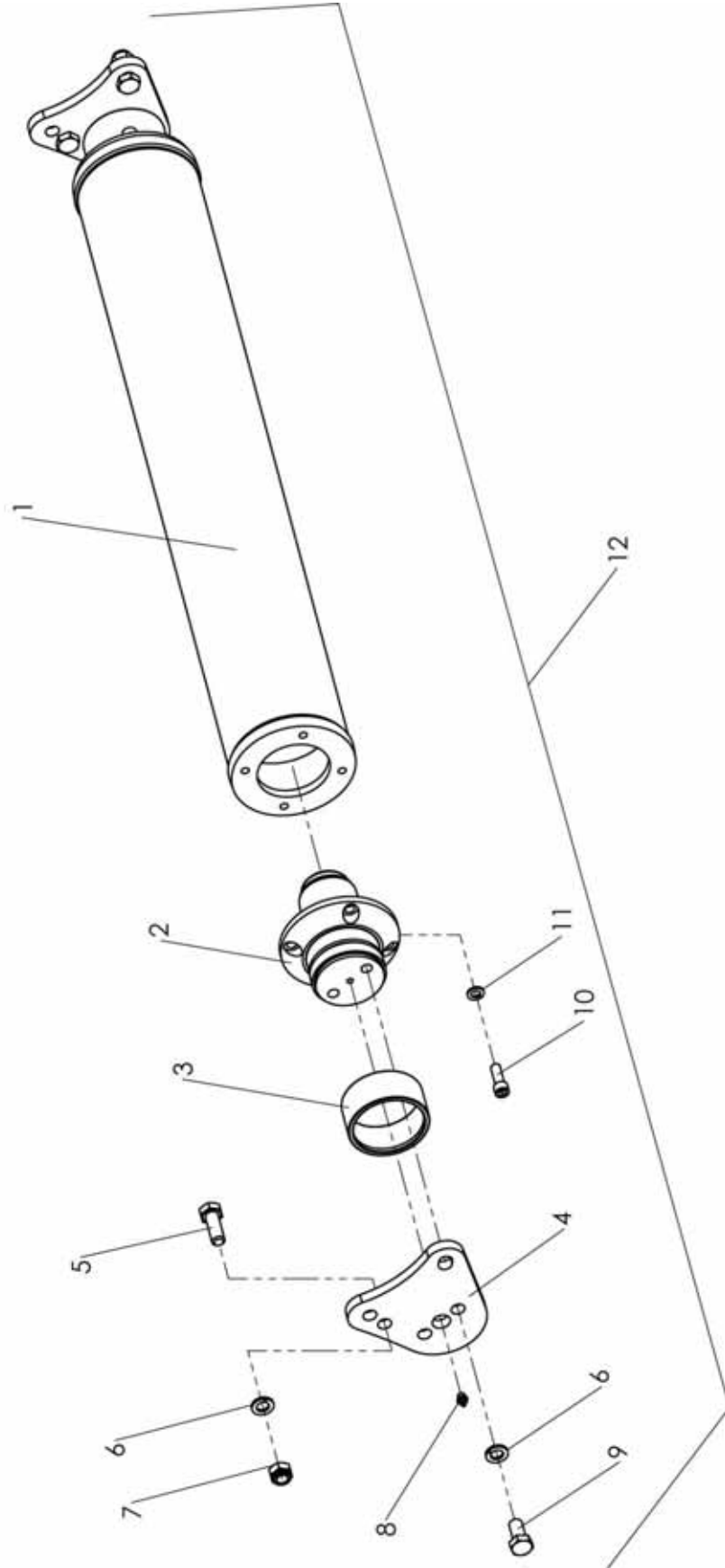
<u>REF #</u>	<u>QTY.</u>	<u>PART NUMBER</u>	<u>DESCRIPTION</u>
1	1	14004035	Linkage WBS Pick-Up 09
2	1	14004062	Tongue
3	1	14004043	Arm
4	1	14004051	Arm
5	1	14004040	Arm
6	1	14004032	Support
7	2	19012016	Hyd. Cyl. 80 x 40 x 250 + Valve Overcenter
8	16	96616528	Bolt TE M16 x 050 UNI 5737 8.8
9	16	97495231	Washer ELSP ASA B-27-16.2 x 27.4 x 3.5 ZN
10	2	19704081	Pin II Cat. D.28 L=116
11	1	19404015	Pin II Cat. 3 Point + Chain + Pin 25
12	2	16004014	Pin D.10
13	3	97971821	Low Self Block Nut M10-6S UNI 7474
14	1	17709022	Pin D40 L=199
15	1	96608621	Bolt TE M10 x 080 UNI 5737 8.8 ZN
16	2	18401054	Bushing 40 x 50 L=38.5
17	4	86603121	Bolt TE M18 x 65 UNI 5737 8.8 ZN
18	4	97972921	Low Self Block Nut M18-6S UNI 7474
19	4	97495331	Washer ELSP ASA B-27-18.2 x 29.4 x 3.5 ZN
20	2	97036611	Grease Nipple UNI 7663
21	1	18909038	Pin D30 L=185 D11
23	1	22003067	Pin F.Cyl. Link Supp. Head Frame SMG
24	1	14311010	Pin For Support (VS. COD. 33541)
25	2	97096311	Smooth Washer UNI 6592 28.0 x 50 x 4.0 ZN
26	2	96608421	Bolt TE M10 x 065 UNI 5737 8.8 ZN
27	2	19412007	Quick Coupler ½" M
28	2	96508460	Copper Gasket 21.5 x 27 (½")
29	2	19412009	Adapter Nipple ½" - ¼"
30	2	48120193	Hose SAE 100R2AT ¼" x 3000 O-FD
31	4	18012002	Hose SAE 100R1ATDN ¼" x 1000 O-F90
32	16	96508160	Copper Gasket 14 x 18 (¼")
33	6	19412007	Bolt For Coupling ¼"
34	1	17912004	Alum. Bloc 4 VIE ¼" 40 x 70
35	4	48120022	Coupling M ¼
36	2	21012042	Pin With Plate D30 x 105 INT=45
37	2	21004040	Pin With Plate D30 x 95 INT = 45
38	4	97093210	Carpent x M10 UNI 5714 ZN
39	4	97494931	Washer ELSP ASA B-27-10.2 x 18.1 x 2.2 ZN
40	4	96607621	Bolt TE M10 x 025 UNI 5739 8.8 ZN
41	4	96508360	Copper Gasket 17 x 22 (⅜")
42	4	42012059	Adapter Nipple M ⅜" - F ¼" L=33
43	16	97972521	Low Self Block Nut M16-6S UNI 7474
44	1	19009088	Pin D30 L=162

04-0044 PULL HITCH ASSEMBLY PART NUMBERS (CONTINUED)

<u>REF #</u>	<u>QTY.</u>	<u>PART NUMBER</u>	<u>DESCRIPTION</u>
45	1	14004034	Linkage WBS Pick-up 09
46	1	14004060	Linkage WBS Pick-up Offset
47	2	13004199	Support
48	2	96610021	Bolt TE M12 x 035 UNI 5739 8.8 ZN
49	2	97495031	Washer ELSP ASA B-27-12.2 x 21.2 x 2.5 ZN
50	2	97972031	Low Self Block Nut M12-10S UNI 7474
51	1	14004062	Drawbar Pull Hitch Standard

05-0006 REAR ROLLER ASSEMBLY

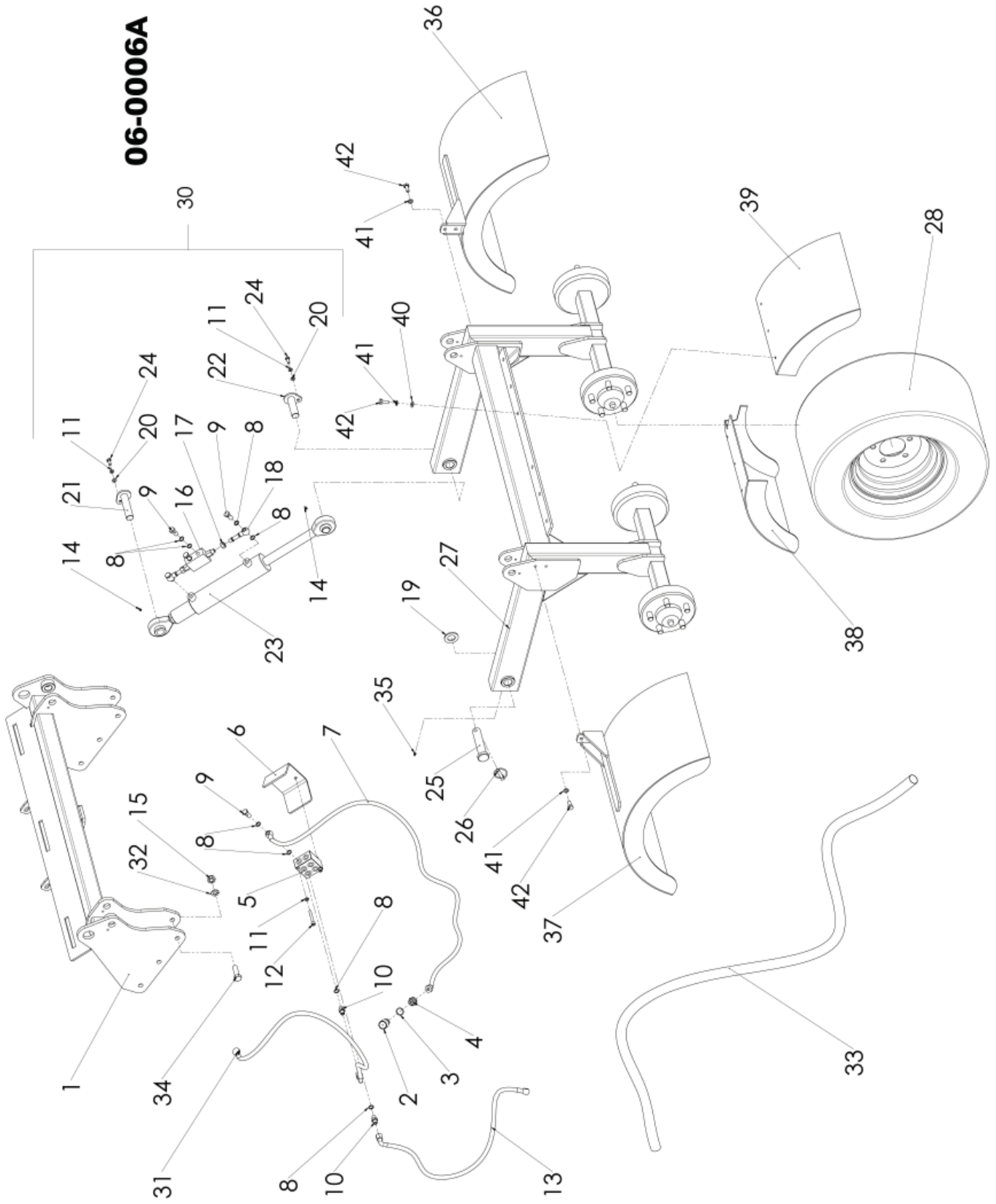
05-0006



05-0006 REAR ROLLER ASSEMBLY PART NUMBERS

<u>REF #</u>	<u>QTY.</u>	<u>PART NUMBER</u>	<u>DESCRIPTION</u>
1	1	14305092	CPL Roller 193.7 x 8 L=225 Roll. 9
2	2	13005000	Group Roller Support '97
3	2	13005165	Spacer For Roller 97 II Type
4	2	17405001	Cpl. Roller Support S Minifrost
5	4	96612521	Bolt TE M14 x 045 UNI 5739 8.8 ZN
6	8	97495131	Washer ELSP ASA B-27-14.2 x 24.1 x 3 ZN
7	4	97972321	Low Self Block Nut M14-6S UNI 7474
8	2	97036711	Grease Nipple UNI 7663 AM M8 x 1.25
9	4	96612221	Bolt TE M14 x 030 UNI 5739 8.8 ZN
10	8	96692223	Bolt TCEI M10 x 030 UNI 5931 8.8 Black
11	8	97494931	Washer ELSP ASA B-27-10.2 x 18.1 x 2.2 ZN
12	1	14005005	Rear Roller Assembly

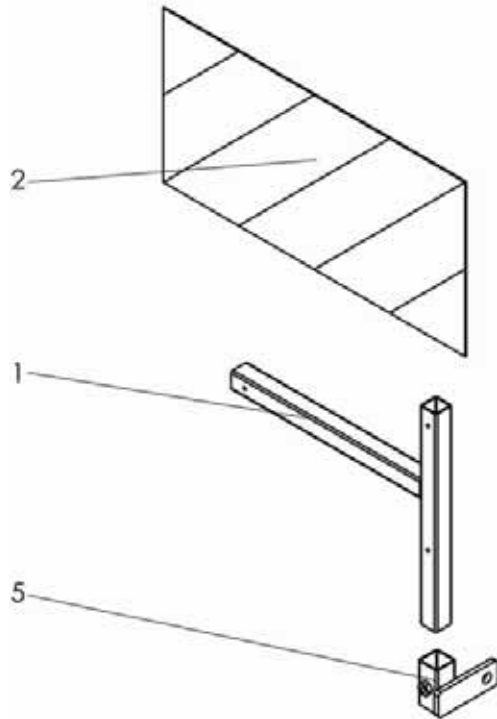
06-0006 REAR GAUGE WHEELS ASSEMBLY



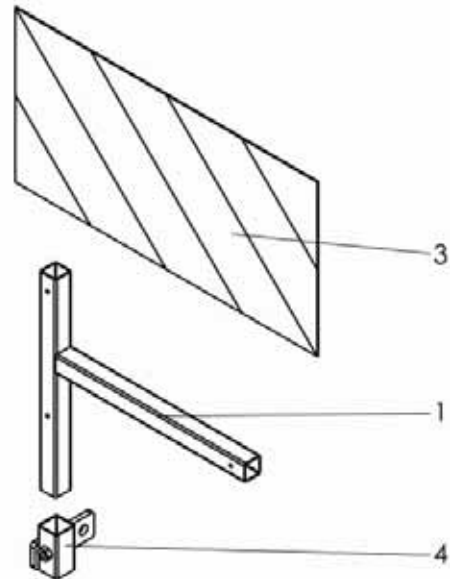
06-0006 REAR GAUGE WHEELS ASSEMBLY PART NUMBERS

<u>REF #</u>	<u>QTY.</u>	<u>PART NUMBER</u>	<u>DESCRIPTION</u>
1	1	14006067	Support
2	2	19412004	Quick Coupler ½"M
3	2	96508460	Copper Gasket 21.5 x 27 (½")
4	2	19412009	Adapter Nipple ½" - ¼"
5	1	17912004	Aluminum Block 4 VIE ¼" 40 x 70
6	1	17912007	Plate
7	2	36912031	Hose SAE R2ATDN ¼" x 3600 FD-O
8	8	96508160	Copper Gasket 14 x 18 (¼")
9	4	19412007	Bolt For Coupling ¼"
10	4	48120022	Coupling M ¼
11	4	97094911	Smooth Washer UNI 6592-08.4 x 16 x 1.6 ZN
12	2	96691321	Bolt TCEI M 08 x 060 UNI 5931 8.8 ZN
13	4	18012002	Hose SAE 100R1ATDN ¼" x 1000 O-F90
14	2	97036611	Grease Nipple UNI 7663 AM 6-5.8
15	12	97972521	Low Self Block Nut M16-6S UNI 7474
16	2	48012022	Block Valve VBPDE 1/4L2CEXC
17	4	23112046	Nut 12L x OGIVE
18	4	14012028	Banjo Fitting 12 x 70
19	2	97096311	Smooth Washer UNI6592 - 28.0 x 50 x 4.0ZN
20	6	97494831	Washer ELSP ASA B-27-08.2 x 14.8 x 2 ZN
21	2	22204014	Pin With Plate D25 x 110 INT=28
22	2	14412001	Pin With Plate D25 x 85 INT=28
23	2	14012027	Hydr. Cyl. 60 x 30 x 200 + Block Valve
24	4	96605521	Bolt TE M08 x 020 UNI 5739 8.8 ZN
25	2	19704081	Pin II Cat. D.28 L=116
26	2	16004014	Pin D.10
27	1	14006025	Support D.140 x 5 For Opt 035
28	4	14006051	Wheel & Tire Assy.
30	2	14012027	Hydr. Cyl. 60 x 30 x 200 Complete Assy.
31	4	23112045	Hose 12L
32	12	97495231	Washer ELSP ASA B-27-16.2 x 27.4 x 3.5 ZN
33	1	20012016	Protection Sheath D.35 L=2800
34	12	96616528	Bolt TE M16 x 050 UNI 5737 8.8
35	2	97036611	Grease Nipple UNI 7663
36	2	14006053	Mud Guard CPL R.H.
37	2	14006062	Mud Guard CPL L.H.
38	2	14006058	Mud Guard CPL Front 1/2 Center
39	2	14006055	Mud Guard CPL Rear 1/2 Center
40	16	97093210	Smooth Washer UNI 5714 ZN
41	16	97494931	Washer ESSP ASA B-27-10.2 x 18.1 x 2.2 ZN
42	16	96607621	Bolt TE M10 x 025 UNI 5739 8.8 ZN
43			Lug Nut

11-0001 REFLECTORS

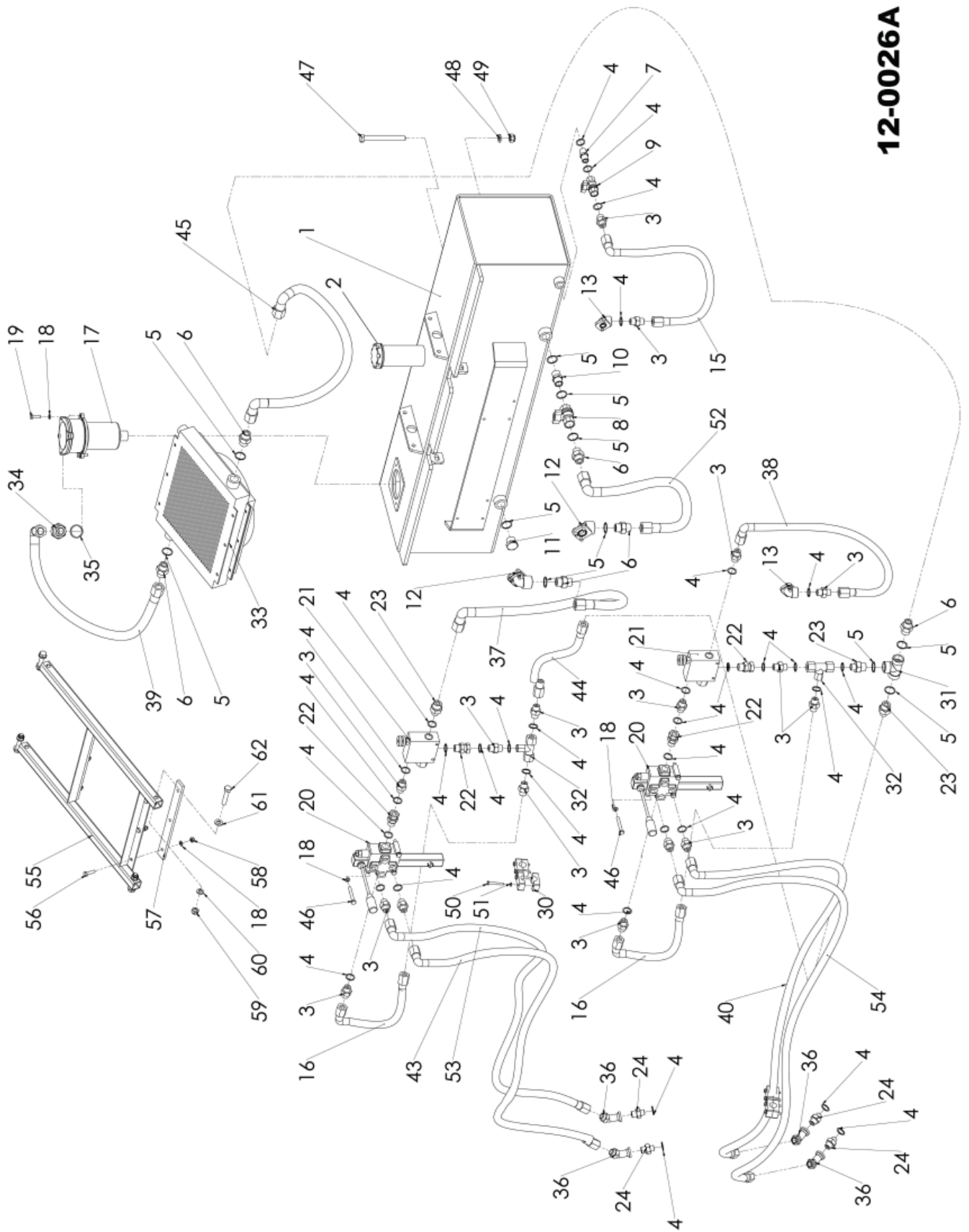


11-0001



11-0001 REFLECTORS PART NUMBERS

<u>REF #</u>	<u>QTY.</u>	<u>PART NUMBER</u>	<u>DESCRIPTION</u>
1	2	13011037	Support
2	1	13011035	Chevrons SX 570 x 280
3	1	13011036	Chevrons DX 570 x 280
4	1	13011038	Support Cpl With Chevrons SX
5	1	13011041	Support Cpl With Chevrons DX



12-0026A

12-0026 HYDRAULICS PART NUMBERS

<u>REF #</u>	<u>QTY.</u>	<u>PART NUMBER</u>	<u>DESCRIPTION</u>
1	1	14012003	Cpl. Oil Tank 100 LT.
2	1	42012073	Cap, Oil Fill
3	17	19012009	Coupling M-M ½"
4	33	96508460	Copper Gasket 21.5 x 27 (½")
5	11	96508560	Copper Gasket 27.1 x 32 (¾")
6	6	42012063	Coupling M-M ¾"
7	1,00 +	45012051	Coupling M-M ½" NPT
8	1	42012255	Rubinetto A SFERA FEMM. ¾" Con FARF.
9	1	42012256	Rubinetto A SFERA FEMM. ½" Con FARF.
10	1	45012050	Coupling M-M ¾" NPT
11	1	10412178	Plug ¾"
12	2	42012099	Coupling ¾" RG40 x 20 CPL.
13	2	44012113	Coupling A Gomito ½" 1G12 Cpl.
14	1	14012026	Hose SAE R2ATDN ¾" x 500 FD-F90°
15	1	18003059	Hose SAE R2ATDN ½" x 700 FD-F90°
16	2	10412011	Hose SAE R2ATDN ½" x 330 FD-F90°
17	1	42012260	Filter
18	14	97494831	Washer ELSP ASA B-27-08.2 x 14.8 x 2 ZN
19	2	96605621	Bolt TE M08 x 025 UNI 5739 8.8 ZN
20	2	14012024	Distr. Q45 Control Valve
21	2	14612028	Valve Flow Control
22	4	11912029	Coupling M-F 1/2
23	3	10512099	Adapting Coupling M-M ½" - ¾" 6687744
24	4	42012004	Adapting Coupling M-M ½" - ⅜"
30	8	10312027	Hose Holder Clamp
31	1	42012094	"T" Coupling F ¾"
32	2	18012005	Coupling "T" F ½"
33	1	45012054	Oil Cooler 12VCC (RO40/V412V50)
34	1	10412121	Adapting Coupling M-M 1" - ¾"
35	1	96528060	Copper Gasket 33.6 x 39.2 (1')
36	4	14012012	Adapter ½ x ½ 45°
37	1	33012006	Hose SAE R2ATDN ¾" x 800 FD - F90°
38			
39	1	23712064	Hose SAE R2ATDN ¾" x 950 FD - F90°
40	2	10412100	Hose SAE R2ATDN ½" x 2000 FD - F90°
43	1	48120117	Hose SAE 100R1ATDN ½" x 1700 FD-F90°
44	1	14012025	Hose SAE R2ATDN ½" x 300 FD - FD
45	1	17612011	Hose SAE R2ATDN ¾" x 700 F90° - F90°
46	6	96606321	Bolt TE M08 x 060 UNI 5737 8.8 ZN
47	4	96613621	Bolt TE M14 x 130 UNI 5737 8.8 ZN
48	4	97495131	Washer ELSP ASA B-27-14.2 x 24.1 x 3 ZN
49	4	97972321	Low Self Block Nut M14-6S UNI 7474
50	8	96604221	Bolt TE M6 x 45 UNI 5737 8.8 ZN
51	8	97494731	Washer ELSP ASA B-27-06.1 x 11.8 x 1.6 ZN

12-0026 HYDRAULICS PART NUMBERS

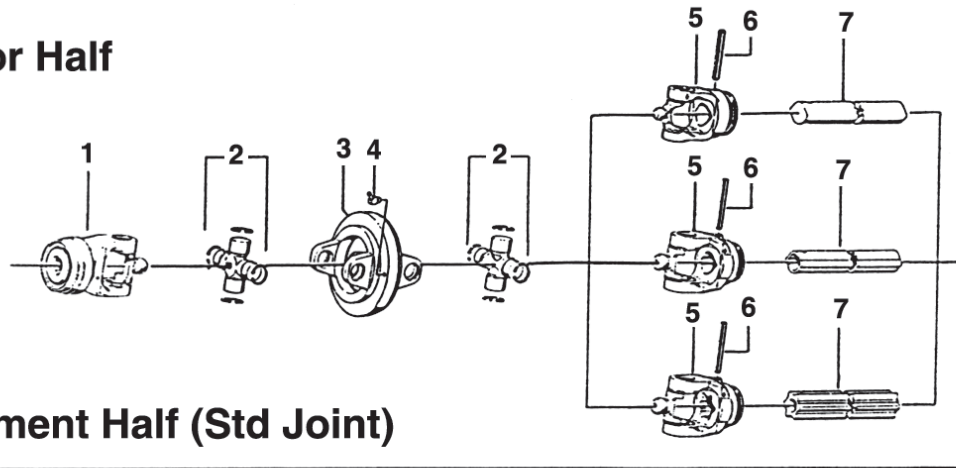
<u>REF #</u>	<u>QTY.</u>	<u>PART NUMBER</u>	<u>DESCRIPTION</u>
52	1	14012026	Hose SAE R2ATDN ¾" x 500 FD - F90°
53	1	48120117	Hose SAE 100R1ATDN ½" x 1700 FD-90°
54	1	10412100	Hose SAE R2ATDN ½" x 2000 FD-F90°
55	1	14012033	Support CPL Oil Cooler
56	6	96605721	Bolt TE M 8 x 30 UNI 5739 8.8 ZN
57	2	42512008	Rubber
58	6	97971721	Lower Self Block Nut M8-6S UNI 7474
59	4	97972021	Lower Self Block Nut M12-6S UNI 7474
60	4	97495031	Washer ELSP ASA B-27 12.2 x 21.2 x 2.5 ZN
61	4	97093211	Washer
62	4	96601721	Bolt TE M12 x 60 UNI 5739 8.8ZN

15-0002 PICK-UP ROTOR ASSEMBLY PART NUMBERS

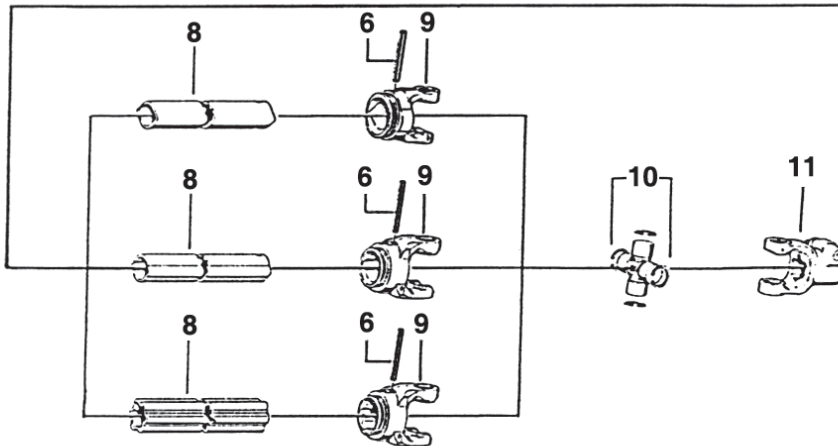
<u>REF #</u>	<u>QTY.</u>	<u>PART NUMBER</u>	<u>DESCRIPTION</u>
1	1	14015091	Pick-Up Rotor Hyd. L=225 Lower
2	1	14015082	Pick-Up Rotor 225 Mod 08 Upper
3	16	96612327	Bolt TE M14 x 35 UNI 5739 8.8 NERA
4	16	97495134	Washer ELSP ASA B-27-14.2 x 24.1 x 3 N
5	2	67036711	Grease Nipple UNI 7663 AM M8 x 1.25
6	2	13002047	Oil Seal 45 x 80 x 10
7	4	13002037	Labyrinth 50/85/6
9	1	18402027	Grease Nipple L=600 Extension
11	1	14015123	Support Without Rabbet WBS Pick-Up
12	2	13002041	Bearing 22209 E
13	4	98045816	Spacer 45 x 55 x 2
14	4	96874976	Circlip 85 x 3
15	2	13002102	Protection Cap D=125 (L=125-200)
17	1	13002013	Support D085 With Rabbet
18	2	96612521	Bolt TE M14 x 045 UNI 5739 8.8 ZN
19	1	96867676	Circlip 45 x 1.75
20	4	97495131	Washer ELSP ASA B-27-14.2 x 24.1 x 3 ZN
21	2	13515062	Bearing NSK-UCFL208
22	2	13515064	Flange For Rotor
23	1	14015088	Bushing 40 x 48.3 x 17.5
24	1	96867476	Circlip 40 x 1.75
25	1	11310025	Cpl. Cover F. Bearing SML 105-200
26	2	97095511	Smooth Washer UNI 6592 - 14 x 28 x 2.5 ZN
27	2	96612621	Bolt TE M14 x 050 UNI 5739 8.8 ZN
28	1	14015122	Cpl. Support Without Rabbet WBS Pick-Up
29	1	13002034	Cpl. Support With Rabbet D.085
30	1	14015090	Rotor Group WBS Pick-Up Hyd. L=225 Lower
31	1	14015081	Pick-Up Rotor 225 Mod 08 Upper

80° Wide Angle Constant Velocity Drive Shaft

Tractor Half

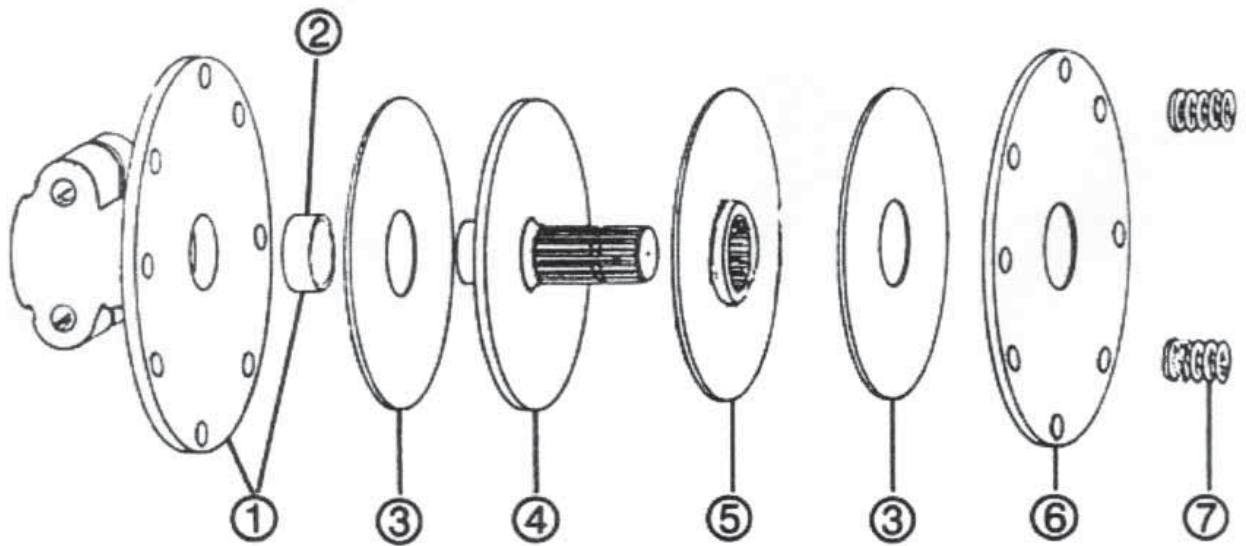


Implement Half (Std Joint)



<u>REF #</u>	<u>QTY.</u>	<u>PART NO.</u>	<u>DESCRIPTION</u>
1	1	AG366121	Fork w/Rel. Button
2	2	A3606	Cross & Bearing Kit
3	1	AG36000	Double Yoke
4	1	B841	Grease Zerk 45°
5	1	AG366251	Inboard Yoke
6	2	A1090	Straight Pin
7	1	A510X5	Inner Shaft 1bga
8	1	A614X5	Outer Shaft 2ag
9	1	A36261	WWE Inboard Yoke
10	1	A036	Cross & Bearing
11	1	A036120	Implement Yoke

B7789 150 HP CLUTCH (8" 6 PLATE CLUTCH)



<u>REF #</u>	<u>QTY.</u>	<u>PART NO.</u>	<u>DESCRIPTION</u>
1	1	B5720	1 ¾" x 6 Spline Base Assy. (includes bushing)
2	1	B6828	Bushing
3	6	B3721	Friction Disc 6 ½" OD x 2 ½" ID
4	1	B7791	1 ¾" x 20 Spline Drive Disc
5	1	B7071	Intermediate Pressure Disc 1 ¾" x 20 Spline
6	3	B4155	Outer Pressure Disc
7	8	B3723	Spring

16-0001 SAFETY DECALS



Ref. # 1



Ref. # 2



Ref. # 3



Ref. # 4



Ref. # 5



Ref. # 7



Ref. # 6



Ref. # 9



Ref. # 10



Ref. # 8



Ref. # 11

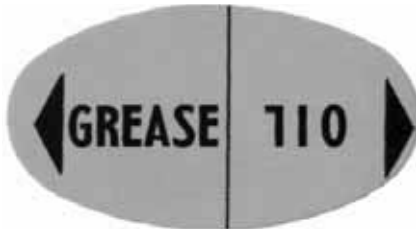
16-0001 SAFETY DECALS (CONTINUED)



Ref. # 12



Ref. # 13



Ref. # 14

<u>REF #</u>	<u>QTY.</u>	<u>PART NUMBER</u>	<u>DESCRIPTION</u>
1	1	130.11.047	Safety Decal
2	1	130.11.031	Safety Decal
3	1	130.11.062	Safety Decal
4	1	130.11.030	Safety Decal
5	1	130.11.029	Safety Decal
6	1	130.11.014	Safety Decal
7	1	130.11.032	Safety Decal
8	1	130.11.050	Safety Decal
9	1	130.11.028	Safety Decal
10	1	130.11.033	Safety Decal
11	1	130.11.023	Safety Decal
12	1	130.11.002	RPM Decal
13	1	130.11.048	Name Decal
14	1	130.11.039	Grease Decal



GEARMORE, INC., warrants each new Gearmore product to be free from defects in material and workmanship for a period of six (6) months from date of purchase to the original purchaser. The warranty period is three (3) months for custom operators. This warranty shall not apply to implements or parts that have been subject to misuse, negligence, accident, or that have been altered in any way.

Our obligation shall be limited to repairing or replacement of any part, provided that such part is returned within thirty (30) days from date of failure to Gearmore through the dealer from whom the purchase was made, transportation charges prepaid.

This warranty shall not be interpreted to render us liable for injury or damages of any kind or nature, direct, consequential or contingent, to person or property. This warranty does not extend to loss of crops, loss because of delay in harvesting or any other expenses, for any other reasons.

Gearmore in no way warranties engines, tires, or other trade accessories, since these items are warranted separately by these respective manufacturers.

Gearmore reserves the right to make improvements in design or changes in specification at any time, without incurring any obligations to owners or units previously sold.

GEARMORE, INC.
13477 Benson Ave.
Chino, CA 91710

Always refer to and heed machine operating warning decals on machine.

The serial number of this product is stored in our computer database, thus submitting a warranty registration card is not required. However, for ordering spare/replacement parts it is necessary to provide the correct model number and serial number to insure receipt of correct parts. We therefore recommend you fill out the bottom section for your reference.

MODEL NUMBER: _____

SERIAL NUMBER: _____

DATE OF PURCHASE: _____

PLACE OF PURCHASE: _____