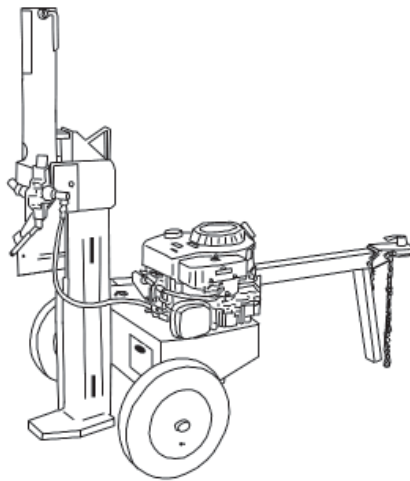




LOG SPLITTERS

ENGINE DRIVEN, TRAILER MOUNTED



**Assembly, Parts
& Operator's Manual
For Model
T34B**

March 2007

TABLE OF CONTENTS

| SECTION | DESCRIPTION | PAGE |
|---------|------------------------------------|-------|
| 1 | Introduction | 1 |
| 1.1 | Specifications | 1 |
| 2 | Safety | 2 |
| 2.1 | Training & Preparation | 3 |
| 2.2 | Safety Wear | 3 |
| 2.3 | Operating Safety | 4 |
| 2.4 | Operating Procedure | 5 |
| 2.5 | Repair & Maintenance Safety | 5 |
| 2.6 | Towing Safety | 6 |
| 2.7 | Fire Prevention | 6 |
| 2.8 | Hydraulic Safety | 7 |
| 2.9 | Safety Decals | 7-8 |
| 3 | Assembly Instructions | 9 |
| 3.1 | Assembly Guide | 9 |
| 4 | Operation | 10 |
| 4.1 | Engine Oil Recommendations | 10 |
| 4.2 | Filling Hydraulic System | 10 |
| 4.3 | Starting Instructions | 10 |
| 4.4 | Towing | 11 |
| 4.5 | Operation | 11 |
| 5 | Maintenance | 11 |
| 6 | Parts Breakdown | 12 |
| 6.1 | Parts List | 13-14 |
| 7 | Limited Warranty | 15 |

DATE OF PURCHASE: _____

MODEL NUMBER: _____

SERIAL NUMBER: _____

1 INTRODUCTION

Congratulations on your choice of Log Splitters. This equipment has been designed and manufactured to meet the needs of a discriminating buyer for the splitting of logs.

Safe, efficient and trouble free operation of your Log Splitter requires that you and anyone else who will be operating or maintaining the machine, read and understand the Safety, Operation, and Maintenance information contained within the Operator's Manual.

Keep this manual handy for frequent reference and to pass on to new operators or owners. Call your dealer, or Gearmore if you need assistance, information or additional copies of the manuals.

1.1 SPECIFICATIONS

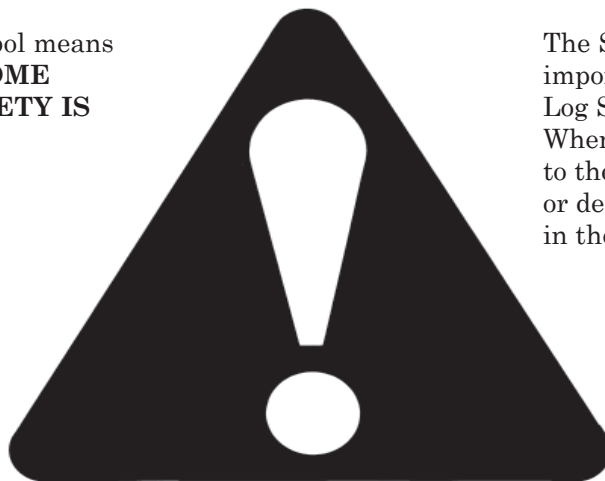
| | MODEL NO. T34B |
|---------------------------------|--|
| MAXIMUM SPLITTING FORCE | 34 Tons |
| ENGINE | 10.5 H.P. Briggs & Stratton Industrial/Commercial |
| CYLINDER | 5" Diameter X 24" Stroke |
| VALVE | Auto-Return |
| PUMP | Two-Stage 16 gpm |
| MAXIMUM LOG LENGTH | 26" |
| CYCLE TIME* | 15 Seconds |
| TIRES | 4.80 X 8" Pneumatic |
| WEDGE | 8" High with Spreader Wings |
| BEAM SIZE | 6-1/2" X 8" |
| TOTAL HYDRAULIC CAPACITY | 31 Quarts |
| FILTER | Spin-On Replaceable |
| HEIGHT | 72" in Vertical Position 42" in Horizontal Position |
| LENGTH | 78" |
| WIDTH | 49" |
| SHIPPING WEIGHT | 675 lbs. |

*Ideal case cycle time. Actual cycle time will vary depending on temperature, altitude, engine speed, pump efficiency, etc.

2 SAFETY

SAFETY ALERT SYMBOL

This Safety Alert symbol means **ATTENTION! BECOME ALERT! YOUR SAFETY IS INVOLVED!**



The Safety Alert symbol identifies important safety messages on the Log Splitter and in the manual. When you see this symbol, be alert to the possibility of personal injury or death. Follow the instructions in the safety message.

Why is SAFETY important to you?

3 Big Reasons

Accidents Disable and Kill
Accidents Cost
Accidents Can Be Avoided

SIGNAL WORDS:

Note the use of the signal words **DANGER**, **WARNING** and **CAUTION** with the safety messages. The appropriate signal word for each message has been selected using the following guide-lines:

DANGER - Indicates an imminently hazardous situation that, if not avoided, will result in death or serious injury. This signal word is to be limited to the most extreme situations typically for machine components which, for functional purposes, cannot be guarded.

WARNING - Indicates a potentially hazardous situation that, if not avoided, could result in death or serious injury, and includes hazards that are exposed when guards are removed. It may also be used to alert against unsafe practices.

CAUTION - Indicates a potentially hazardous situation that, if not avoided, may result in minor or moderate injury. It may also be used to alert against unsafe practices.

If you have any questions not answered in this manual or require additional copies or the manual is damaged, please contact your dealer.

2.1 TRAINING & PREPARATION

WARNING: Read and thoroughly understand all instructions and safety information before assembling or operating this log splitter. Failure to do so may cause serious injury or death. Do not allow anyone to operate this log splitter who has not read this manual. As with all power equipment, a log splitter can be dangerous if assembled or used improperly. Do not operate this log splitter if you have doubts or questions concerning safe operation.



PREPARE LOGS PROPERLY

BOTH ends of each log should be cut as square as possible to help prevent the log from riding out of the splitter during operation. Do not split logs greater than 26 inches in length.

INTENDED USE

NEVER use this log splitter for any other purposes than splitting wood. It is designed for this use **only**. Any other use can cause serious injury or death.

2.2 PERSONAL PROTECTIVE EQUIPMENT



BEFORE operating this log splitter, make sure that you adhere to the safety standards set forth in this manual.

NEVER wear loose clothing or jewelry that can be caught by moving parts of your Log Splitter and pull you into it. Keep clothing away from all moving parts of your Log Splitter. Wear proper head gear to keep hair away from moving parts.

ALWAYS wear safety shoes. A dropped log can seriously injure your foot.

ALWAYS wear safety glasses or goggles. A piece of splitting log could fly off and hit your eyes.



If you wear gloves, be sure they are tight fitting without loose cuffs or draw strings.

Have a first aid kit available should the need arise and learn how to use it.



ALWAYS wear protective hearing devices as needed.



PROLONGED EXPOSURE TO LOUD NOISE MAY CAUSE PERMANENT HEARING LOSS!

Tractors with or without equipment attached can often be noisy enough to cause permanent, partial hearing loss. We recommend that you wear hearing protection on a full-time basis if the noise in the Operator's position exceeds 80db. Noise over 85db on a long-term basis can cause severe hearing loss. Noise over 90db adjacent to the Operator over a long-term basis may cause permanent, total hearing loss. **NOTE:** Hearing loss from loud noise (from tractors, chain saws, radios, and other such sources close to the ear) is cumulative over a lifetime without hope of natural recovery.

2.3 GENERAL SAFETY

Failure to follow these instructions may result in serious injury or death.

NEVER allow children or adults lacking proper instructions and understanding to operate this log splitter.

KEEP all people and pets a minimum of 10 feet away from your work area when operating this log splitter. Only the operator is to be near the log splitter during use.

If a helper is assisting in loading logs, **NEVER** actuate the control until the helper is clear of the work area.

NEVER operate the log splitter while under the influence of alcohol, drugs, or medication.

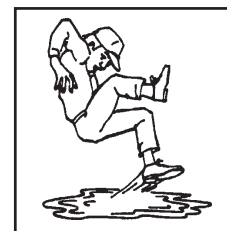
NEVER allow a person who is tired or otherwise not alert to use your log splitter.

- Log Splitter owners must give operating instructions to operators or employees before allowing them to operate the machine, and at least annually thereafter per OSHA (Occupational Safety and Health Administration) regulation 1928.57.
- The most important safety feature on this equipment is a **SAFE** operator. It is the operator's responsibility to read and understand **ALL** Safety and Operating instructions in the manual and to follow these. Most accidents can be avoided.
- A person who has not read and understood all operating and safety instructions is not qualified to operate the machine. An untrained operator exposes himself and bystanders to possible serious injury or death.
- Do not modify the equipment in any way. Unauthorized modification may impair the function and/or safety and could affect the life of the equipment.
- **Think SAFETY! Work SAFELY!**

2.4 WORK AREA SAFETY

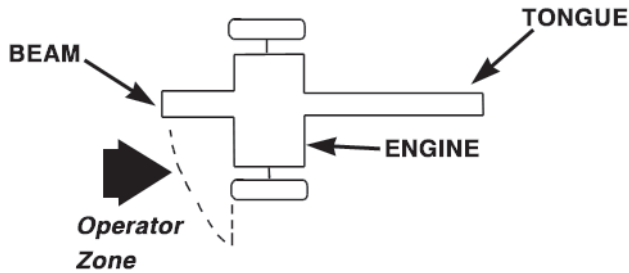
OPERATE IN SAFE ENVIRONMENT AND ON SAFE GROUND

1. **NEVER** operate your Log Splitter on slippery, wet, muddy or icy surfaces. Safe footing is essential in preventing accidents.
2. **ONLY** operate your Log Splitter on level ground. Operating on a slope could cause the log splitter to roll over or logs to fall off.
3. **NEVER** operate your log splitter in an enclosed area. Exhaust fumes contain carbon monoxide, which can be deadly when inhaled.
4. **NEVER** attempt to move your log splitter over hilly or uneven terrain without a tow vehicle or adequate help.
5. **ALWAYS** block the wheels to prevent movement of the log splitter while in operation.
6. **ONLY** operate your log splitter in daylight or under good artificial light.
7. **ALWAYS** keep the work area clean. Remove split wood around your log splitter immediately so that you don't stumble over it.



2.4 OPERATING PROCEDURE

- ◆ **ONLY** operate the Log Splitter from the operator zone.



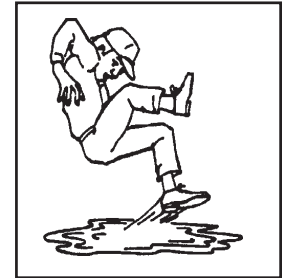
- ◆ Know how to stop the log splitter and disengage the controls before operating it.
- ◆ **NEVER** place hands or feet between log and splitting wedge during forward or reverse stroke. Serious injury or death could result.
- ◆ **NEVER** straddle or step over the log splitter during operation.
- ◆ **NEVER** try to split two logs on top of each other.
- ◆ **NEVER** try to cross split a second log.
- ◆ **NEVER** allow one person to operate the valve while another is positioning the log.
- ◆ **NEVER** attempt to load your Log Splitter when the ram or wedge is in motion.
- ◆ **ALWAYS** use your hand to operate the control lever. **NEVER** use your foot, a rope or any other extension device.
- ◆ **NEVER** move the Log Splitter while the engine is running. Shut off the engine even if you are leaving the log splitter for a short period of time.
- ◆ **ALWAYS** avoid contact with the muffler and other hot areas of the engine during operation to prevent burns.

2.5 REPAIR & MAINTENANCE SAFETY

Good maintenance is your responsibility. Poor maintenance is an invitation to trouble.

Follow good shop practices.

- Keep service area clean and dry.
- Be sure electrical outlets and tools are properly grounded.
- Use adequate light for the job at hand.



NEVER operate your Log Splitter in poor mechanical condition or when in need of repair.

PERIODICALLY check that all nuts, bolts screws, hydraulic fittings, and hose clamps are tightened.

NEVER alter your log splitter in any manner, such as attaching a rope or extension to the control lever or adding to the width or height of the wedge. Such alterations may cause your log splitter to be unsafe and will void the warranty.

PERFORM all recommended maintenance procedures before you use your log splitter.

REPLACE all damaged or worn parts immediately.

NEVER tamper with the engine to run it at excessive speeds. The maximum engine speed is preset by the manufacturer and is within safety limits.

ALWAYS remove the spark plug wire before performing any service or repair on your log splitter.

ALWAYS check the level of hydraulic oil and engine oil before operation.

All replacement parts must meet manufacturer's specifications.

2.6 TOWING SAFETY

ALWAYS check all local and state regulations regarding towing, licensing, and lights before towing your log splitter.

BEFORE towing, be certain that the log splitter is correctly and securely attached to the towing vehicle and that the safety chains are secured to the hitch or bumper of the vehicle with enough slack to allow turning. Always use a Class I, 2" ball with this log splitter.

NEVER carry any cargo or wood on your log splitter.

NEVER allow anyone to sit or ride on your Log Splitter.

ALWAYS disconnect your log splitter from the towing vehicle before operating it.

ALWAYS be careful when backing up with your log splitter in tow. It could jackknife.

ALWAYS allow for added length of your log splitter when turning, parking, crossing intersections and in all driving situations.

NEVER exceed 45 mph when towing your log splitter. Towing the log splitter at speeds higher than 45 mph could result in loss of control, damage to the equipment, serious injury or death. Adjust towing speed for terrain and conditions. Be extra cautious when towing over rough terrain, especially railroad crossings.

2.7 FIRE PREVENTION

NEVER operate your log splitter near a flame or spark. Hydraulic oil and gasoline are flammable and can explode.

DO NOT fill the gas tank while the engine is hot or running. Allow the engine to cool before refueling.

NEVER smoke while operating or refueling your Log Splitter. Gas fumes can easily explode.

Only refuel your log splitter outdoors in a clear area void of gas fumes or spilled gas. Always use an approved fuel container. Always replace the gas cap securely.

If gasoline is spilled, move machine away from the area of the spill and avoid creating any source of ignition until the spilled gas has evaporated.

Take a Class B fire extinguisher with you when operating your log splitter in dry areas as a precautionary measure against possible flying sparks.



Completely drain the fuel tank prior to storage to avoid the potential fire hazard.

ALWAYS store gasoline in an approved, tightly sealed container. Store the container in a cool, dry place. **DO NOT** store in the house or near a heating appliance.

IMPORTANT NOTE:

This unit is equipped with an internal combustion engine and should not be used on or near any unimproved forest covered, brush covered or grass covered land unless the engine's exhaust system is equipped with a spark arrester meeting applicable local or state laws (if any). If a spark arrester is used, it should be maintained in effective working order by the operator.

In the state of California, the above is required by law (Section 442 of the California Public Resources Code). Other states may have similar laws. Federal laws apply on federal lands. A spark arrester muffler (optional by manufacturer) is available as an accessory at your nearest engine dealer. Check legal requirements in your area.

2.8 HYDRAULIC SAFETY

The hydraulic system of your log splitter requires careful inspection along with the mechanical parts. Be sure to replace frayed, kinked, cracked or otherwise damaged hydraulic hose and components.



NEVER Check for leaks of hydraulic fluid with your hand. Fluid escaping from a small hole can almost be invisible. Escaping fluid under pressure can have sufficient force to penetrate skin causing serious personal injury or even death. Leaks can be detected by passing a piece of cardboard over the suspected leak and looking for discoloration.

ALWAYS seek professional medical attention immediately if injured by escaping hydraulic fluid. Serious infection or reaction can develop if proper medical treatment is not administered immediately.

Should it become necessary to loosen or remove any hydraulic fitting or line, be sure to relieve all pressure by shutting off the engine and moving the control handle back and forth several times.

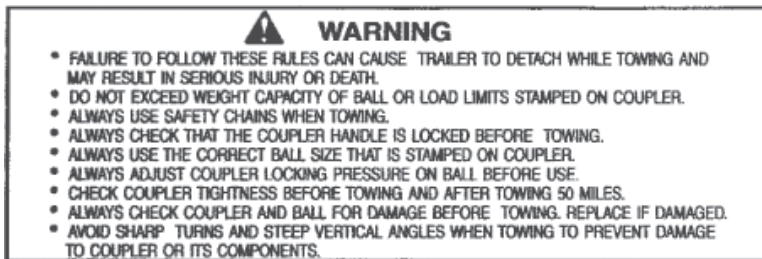
NEVER remove the cap from the hydraulic tank or reservoir while your log splitter is running. Hot oil under pressure could result in serious injury.

NEVER adjust the hydraulic valve. The pressure relief valve on your Log Splitter is preset at the factory. Only a qualified service technician should perform this adjustment.

2.9 SAFETY DECALS

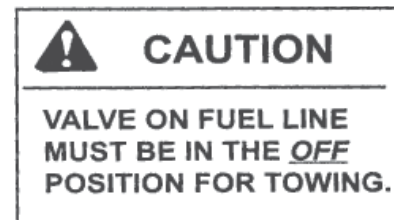


Make sure that all safety warning decals are in good condition and readable. Always replace missing or defaced decals. Contact your local dealer or Gearmore for free replacements.



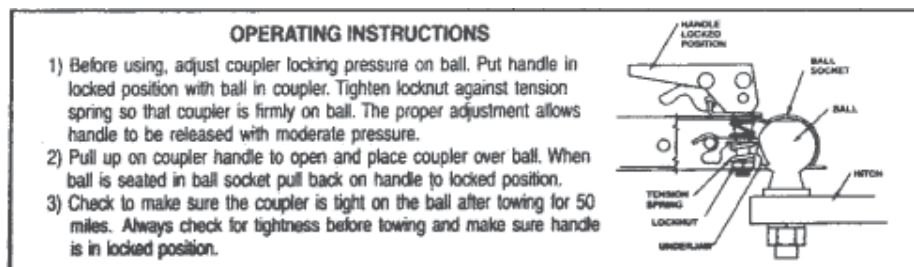
Part No. DL52-2-9

Location: Top, front end of tongue



Part No. DL52-2-10

Location: Briggs & Stratton engines - 8 H.P. and up



Part No. DL52-2-8

Location: Top, front end of tongue

2.9 SAFETY DECALS (Continued)



**ALWAYS REPLACE
MISSING OR
DAMAGED DECALS**



Part No. DL51-1-57

Location: Top, forward section of hydraulic cylinder



CAUTION

**USE EXTREME CARE WHEN TILTING THE BEAM.
DUE TO THE HEAVY WEIGHT OF THE BEAM,
SOME ASSISTANCE MAY BE NEEDED TO INSURE
SAFETY AND PREVENT INJURY.**

Part No. DL51-1-86

Location: Clevis end of beam
near tilt locking pin



WARNING

**TO PREVENT SERIOUS INJURY OR
DEATH AND/OR EQUIPMENT DAMAGE**

Do not exceed 45 mph when towing this
log splitter. Loss of control could result
at high speed.

DL52-2-14

Part No. DL52-2-14

Location: Top, front end of tongue



WARNING

1. READ AND UNDERSTAND OPERATOR'S MANUAL THOROUGHLY BEFORE OPERATION. FAILURE TO DO SO MAY RESULT IN SERIOUS INJURY.
2. KEEP ALL SHIELDS IN PLACE.
3. KEEP HANDS, FEET AND CLOTHING AWAY FROM POWER DRIVEN PARTS.
4. ALWAYS WEAR SAFETY GLASSES AND SAFETY SHOES DURING OPERATION.
5. ALWAYS OPERATE OUT-OF-DOORS WITH GOOD VENTILATION.
6. ALWAYS STOP ENGINE AND REMOVE SPARK PLUG WIRE BEFORE PERFORMING MAINTENANCE OPERATIONS.
7. ALWAYS SHUT OFF ENGINE WHEN LEAVING LOG SPLITTER UNATTENDED, EVEN FOR A SHORT PERIOD OF TIME.
8. ONLY ONE PERSON SHOULD LOAD AND OPERATE THE LOG SPLITTER. KEEP ALL OTHERS CLEAR DURING OPERATION. NEVER ALLOW ONE PERSON TO OPERATE VALVE WHILE ANOTHER IS POSITIONING THE LOG.
9. ALWAYS POSITION LOG WITH HANDS ON THE SIDES OF LOG. KEEP HANDS CLEAR OF ENDS.
10. KEEP ALL CHILDREN AWAY FROM THE LOG SPLITTER.
11. DO NOT STEP OVER THE LOG SPLITTER.
12. ONLY USE HANDS TO OPERATE THE CONTROL VALVE.
13. DO NOT OPERATE THE LOG SPLITTER WHILE UNDER THE INFLUENCE OF ALCOHOL, DRUGS OR MEDICATION.
14. ALWAYS OPERATE THE LOG SPLITTER ON LEVEL, DRY, NON-SLIPPERY SURFACES. KEEP OFF SLOPES.
15. KEEP WORK AREA CLEAR OF SPLIT WOOD, DEBRIS OR OTHER OBSTACLES.
16. ALWAYS STAY IN THE OPERATOR ZONE WHEN USING THE LOG SPLITTER.
17. ALWAYS SPLIT WOOD IN THE DIRECTION OF THE GRAIN ONLY.
18. DO NOT ADD GASOLINE WHILE THE ENGINE IS HOT OR RUNNING. ALLOW ALL SPILLED GAS TO EVAPORATE BEFORE USING LOG SPLITTER.

Part No. DL51-1-32

Location: Top of hydraulic cylinder

3 ASSEMBLY INSTRUCTIONS

NOTE:

This log splitter was partially assembled at the factory. Refer to the drawing and parts list should it become necessary to disassemble the unit for repair or replacement parts.

STEP 1: Remove all the components from the crate. Inspect each piece for shipping damage. If any part is damaged, contact your dealer or delivering carrier.

STEP 2: Attach the tongue (3)* to the tank/axle (2)* as shown in the diagram using the two 1/2" NC x 4-1/2" hex cap screws (48)*, 1/2" lockwashers (47)* and 1/2" NC hex nuts (46)* from the hardware kit. Tighten. Make sure the ground stand (24)* is in the vertical position.

Note: Flatwashers are included in the hardware kit should it be necessary to use them as spacers. This will eliminate play between the tongue and the tank/tongue mounting plate.

STEP 3: Remove the rubber covering from the two spindles on the tank/axle (2)*. The wheel bearing cups, bearing cones, grease seals and hub caps are already assembled. Bearing cones have been greased at the factory. Remove the blue, plastic protective covering from the wheel hubs. Mount the wheels (54)* to the spindles on the tank/axle (2)* using the 3/4" light flatwasher (59)* and 3/4" slotted nut (60)* from the hardware kit. There are two types of light flatwashers (59)*. Use the ones that best allow the wheel to rotate freely after the 3/4" slotted nut (60)* is tightened down and bearing play is removed. Install the cotter pin (61)* and the hub cap (62)* from the hardware kit. Repeat step 4 for the other wheel.

STEP 4: Stand the beam (1)* up on end. NOTE: At least two people are required to raise the beam for the 34 ton model to insure safety and prevent injury. Make sure that the beam is stable. Remove the pivot pin (52)* and the clip pin (53)* from the tank/axle (2)*. Roll the axle/tongue assembly into position between the two tabs on the beam (1)*. Slide the pivot pin (52)* through the holes and lock in place with the clip pin (53)*.

STEP 5: Connect the end of the 1/2" I.D. x 44" hydraulic hose (21)* coming from the fitting (20)* on the pump (9)* to the fitting (75)* on the valve (5)*.

STEP 6: Slide one hose clamp (50)* on the end of the 3/4" I.D. x 37" hydraulic hose (49)* that comes from the fitting on the tank/axle (2)*. Then connect the hose to the fitting (69)* on the valve (5)*. Tighten the hose clamp.

STEP 7: Attach the fenders (44)* to the tank/axle (2)* using the 1/4" NC x 3/4" hex cap screws (43)*, 1/4" flatwashers (42)*, 1/4" lockwashers (41)*, and 1/4" hex nuts (40)*. Tighten.

* See *Parts Breakdown* (Pages 12 - 14) in this manual.

4 OPERATING INSTRUCTIONS

STEP 1: Starting



WARNING: Read and thoroughly understand all instructions and safety information before operating this log splitter. Failure to do so may cause serious injury or death. Do not allow anyone to operate this log splitter who has not read this manual. As will all power equipment, a log splitter can be dangerous if it is assembled or used improperly. Do not operate this log splitter if you have doubts or questions concerning safe operation.

IMPORTANT: The engine and hydraulic tank are shipped without oil. See the engine operating and maintenance instructions manual packed with your Log Splitter for the type of crankcase oil, fuel, etc. The engine manufacturer recommends lead-free gasoline only.



CAUTION: DO NOT START OR RUN THE ENGINE WITHOUT OIL IN THE HYDRAULIC RESERVOIR AND ENGINE.

STEP 2: The hydraulic reservoir should be filled with an SAE20 hydraulic oil. If hydraulic oil is difficult to obtain, automatic transmission fluid can be substituted and *should be used instead of hydraulic oil when temperatures are below 32° F*. Use only clean oil and take care to prevent dirt from entering the hydraulic reservoir.



CAUTION: WHEN TIGHTENING THE BREATHER CAP ON THE TANK, POINT THE HOLE AWAY FROM THE ENGINE AND THE OPERATOR ZONE.

4.1 ENGINE OIL RECOMMENDATIONS

For temperatures above 40° F use an SAE30W oil. Using multigrade oil may increase oil consumption. Using SAE 30W oil below 40° F will result in hard starting and possible engine bore damage. For temperatures below 40° F use an SAE10W-30 or SAE5W-30 oil. Oil capacity is about $\frac{5}{8}$ quart (20 ounces; 0.6 liter).

4.2 FILLING HYDRAULIC SYSTEM

Fill the hydraulic reservoir with at least five gallons of hydraulic fluid. After the hydraulic reservoir and the engine crankcase are filled with oil, start the engine. The hydraulic pump should prime itself. With the engine running, move the hydraulic valve lever toward the wedge. This will cause the cylinder to extend and expel air. When the cylinder is fully extended, retract it. Repeat this procedure several times. An erratic movement of the cylinder indicates that there is still air in the system. More oil should then be added to bring the fluid level up to the "OK" range on the dipstick. Total hydraulic capacity is 31 quarts. **NOTE:** If the tank is overfilled, it will tend to expel oil from the breather cap when the cylinder is retracted. After adding more oil to the tank, cycle the cylinder again until it has a constant speed indicating that all oil has been expelled. Check the oil level in the reservoir again with the dipstick to make sure it is in the "OK" range. Do not fill beyond the "OK" range on the dipstick.

4.3 STARTING INSTRUCTIONS

Refer also to the Engine Operating and Maintenance Instructions manual for your particular log splitter.

1. 34 Ton Model with 10.5 h.p. Engine
 - a. Move the throttle to "FAST". Always operate the engine with throttle lever in the "FAST" position.
 - b. Move choke control lever to "CHOKE" position.
 - c. Grasp rope handle and pull slowly until resistance is felt. Then pull rapidly to start engine and avoid engine kickback.
 - d. Allow the engine to warm up. If operating in warm weather, move the choke control lever toward "RUN" a short distance at a time over several seconds. For cold weather operation do this procedure over several minutes. Operate with choke lever in the "RUN" position.
 - e. To stop engine, move the throttle lever to the "STOP" position.

The engine maximum governed speed is preset at the factory at 3600 RPM no load speed. When splitting wood, the throttle should be set at the maximum setting to develop the horsepower required for the pump.

4.3 TOWING

The Log Splitter is equipped with pneumatic tires, a Class I coupler (2" diameter ball required) and safety chains. Before towing the safety chains must be secured to the hitch or bumper of the vehicle. Local regulations should be checked regarding licensing, lights, towing, etc. *See also Towing Safety on page 6 of this manual*

4.5 OPERATION



WARNING: See safety information related to operation of the log splitter on page 3 and 4 of this manual. Make sure that you have the recommended personal protective equipment described on page 3.

1. Set up the Log Splitter in a clear, level area and block the wheels. Make sure that the suction port on the tanks is always on the lower side of the log splitter.
2. Place a log on the beam against the foot plate. Make sure that the log is securely on the foot plate and up against the beam.

Both ends of each log should be cut as square as possible to help prevent the log from riding out of the splitter during operation.

3. Depress the valve handle so that the cylinder will drive the wedge into the log. Extend the cylinder until the log splits or to the end of its stroke. If the log has not completely split after the cylinder has reached the end of its extension, retract the cylinder.

IMPORTANT: Leaving the valve in the "actuate" position at the end of the stroke may damage the pump. Always use extra care when splitting logs with unsquare ends.

NOTE: For operation in wooded areas, obtain a spark arrester for the exhaust system. See the engine operating and maintenance manual and check with your authorized Briggs & Stratton center. *See also Fire Prevention in the Safety Information Section (Page 6) of this manual.*

IMPORTANT:

TO EXTEND THE LIFE OF THE HYDRAULIC CYLINDER, AVOID "BOTTOMING OUT" WEDGE PLATE TO THE FOOT PIECE. TO CONFORM WITH INDUSTRY SAFETY RECOMMENDATIONS, THE WEDGE STOPS 2 INCHES FROM THE END OF THE STROKE.

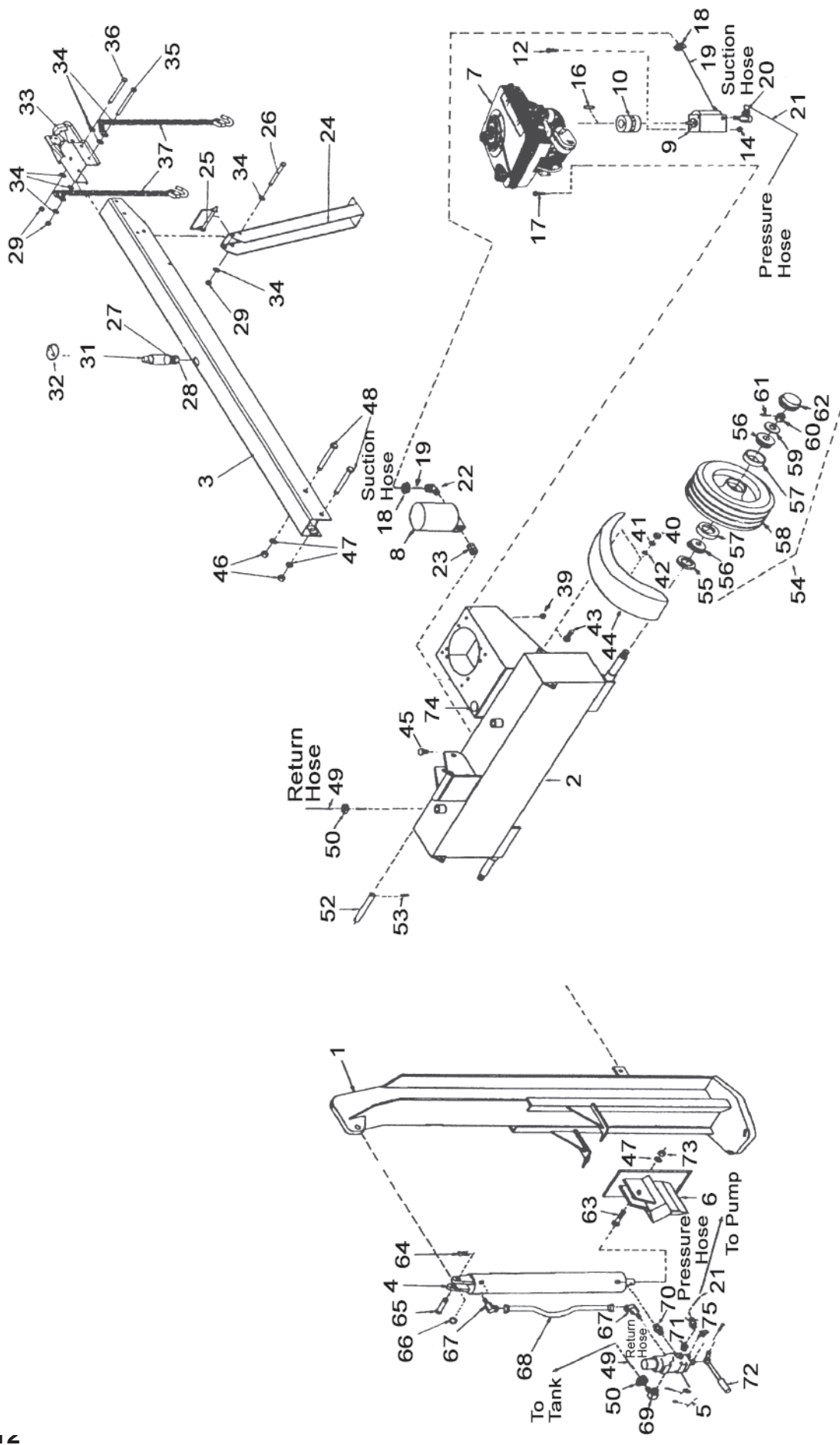
5 MAINTENANCE

By following a good maintenance program, your equipment will last for many years.

1. Consult the operating and maintenance instructions of the engine manufacturer for engine care and maintenance.
2. Always check the oil level of the hydraulic reservoir before operation. Operating the log splitter without an adequate oil supply will cause severe damage to the pump.
3. Change the oil filter after the first 25 hours of operation. Thereafter, change the oil filter every 100 hours or seasonally, whichever comes first.
4. If the wedge becomes dull or nicked, it can be removed and sharpened. Remove the $\frac{1}{2}$ " diameter bolt that connects the wedge to the cylinder. The hose from the valve may need to be removed. While the log splitter is in the horizontal position, loosen the hose clamp and disconnect the hose from the valve. Carefully lift the cylinder to allow the wedge to slide forward. The wedge can now be lifted off and sharpened.
5. Clean the breather cap after 25 hours of operation. Clean it more often when operated in dusty conditions. To clean, remove the breather from the tank and flush with kerosene or liquid detergent to remove the dirt.
6. See also Repair and Maintenance Safety in the Safety Information section (page 5) of this manual.
7. All replacement parts must meet manufacturer's specifications.

* See **Parts Breakdown** (Pages 12 - 14) in this manual.

6 PARTS BREAKDOWN



6.1 PARTS LIST

| <u>REF #</u> | <u>QTY.</u> | <u>PART NO.</u> | <u>DESCRIPTION</u> |
|--------------|-------------|-----------------|---|
| 1 | 1 | LS401148 | Beam |
| 2 | 1 | LS401190 | Tank/Axle |
| 3 | 1 | LS401261 | Tongue |
| 4 | 1 | HC390129 | 5" x 24" Hydraulic Cylinder |
| 5 | 1 | HC390406S | Auto-Return Valve |
| 6 | 1 | LS401183 | Wedge |
| 7 | 1 | HC390524 | 10.5 H.P. Industrial/Commercial Engine |
| 8 | 1 | HC390601 | Filter |
| | 1 | HC390601A | Filter Element (see list of equivalent filter elements) |
| | 1 | HC390601B | Filter Base |
| 9 | 1 | HC390709 | 16 GPM Pump |
| 10 | 1 | LS400824L | Pump Engine Coupler (3 pieces) |
| 11 | 1 | LS400825L | 1" I.D. Coupler Half (engine side) |
| | 1 | LS400826L | 1/2" I.D. Coupler Half (pump side) |
| | 1 | LS400827L | Coupler Spider |
| 12 | 4 | Obtain Locally | 5/16" x 1" Hex Cap Screw |
| 14 | 4 | Obtain Locally | 5/16" NC Locknut |
| 16 | 1 | LS400343 | 1/4" Square Engine Key |
| 17 | 4 | Obtain Locally | 5/16" NC x 1 1/2" Hex Cap Screw |
| 18 | 2 | HC390316 | Hose Clamp #16 |
| 19 | 1 | HC390248 | 1" x 9" Suction Hose |
| 20 | 1 | HC390341 | 1/2" x 90° Street Elbow |
| 21 | 1 | HC390257 | 1/2" I.D. x 47" Hydraulic Pressure Hose |
| 22 | 1 | HC390320 | 3/4" NPT x 3/4" 90° Hose Fitting |
| 23 | 1 | HC390349 | 3/4" x 2 1/2" Nipple |
| 24 | 1 | LS401260 | Ground Stand |
| 25 | 1 | P7958 | 5/16" Locking Pin for Ground Stand |
| 26 | 1 | HW172718 | M10 x 1.5 x 85mm Bolt |
| 27 | 2 | Obtain Locally | 5/8" Lockwasher |
| 28 | 2 | Obtain Locally | 5/8" NF Hex Nut |
| 29 | 3 | HW172803 | M10 x 1.5 Nut |
| 31 | 1 | P789 | 7/8" Diameter Pin with 5/8" NF Thread |
| 32 | 1 | P794 | 1/4" Lynch Pin |
| 33 | 1 | LS400346 | Hitch Coupler for 2" Ball |
| 34 | 6 | HW172908 | 10mm Washer |
| 35 | 1 | HW172717 | M10x1.5x115mm Bolt 3/8" NC x 1" Gr. 5 Hex Cap Screw |
| 36 | 1 | HW172716 | M10 x 1.5 x 100mm Bolt |
| 37 | 1 | LS400323 | Safety Chain with "S" Hook |
| | 1 | LS400345 | 3/8" "S" Hook |
| 39 | 4 | Obtain Locally | 5/16" NC Locknut |
| 40 | 4 | Obtain Locally | 1/4" NC Hex Nut for Fender (Optional) |
| 41 | 4 | Obtain Locally | 1/4" Lockwasher for Fender (Optional) |
| 42 | 4 | Obtain Locally | 1/4" Flatwasher for Fender (Optional) |
| 43 | 4 | Obtain Locally | 1/4" NC x 3/4" Hex Cap Screw for Fender (Optional) |
| 44 | 2 | LS401151 | Fender |

6.1 PARTS LIST

| <u>REF #</u> | <u>QTY.</u> | <u>PART NO.</u> | <u>DESCRIPTION</u> |
|--------------|-------------|-----------------|---------------------------------------|
| 45 | 1 | LS400429 | Breather Cap |
| 46 | 2 | Obtain Locally | 1/2" NC Hex Nut |
| 47 | 3 | Obtain Locally | 1/2" Lockwasher |
| 48 | 2 | Obtain Locally | 1/2" NC x 4 1/2" Hex Cap Screw |
| 49 | 1 | HC390249 | 3/4" I.D. x 37" Hydraulic Return Hose |
| 50 | 2 | HC390316 | Hose Clamp #16 |
| 52 | 1 | P71022WC | 5/8" x 6 1/4" Pivot Pin |
| 53 | 1 | Obtain Locally | 1/8" "R" Clip Pin |
| 54 | 2 | LS400312B | Pre-greased Wheel Assembly |
| 55 | 2 | BE22176 | Grease Seal |
| 56 | 4 | BE22175 | Bearing Cone |
| 57 | 4 | BE22174 | Bearing Cup |
| 58 | 2 | LS400312 | 4.80 x 8" Road Speed Tire |
| 59 | 2 | Obtain Locally | 3/4" Light Flat Washer |
| 60 | 2 | HN17120 | 3/4" NF Slotted Nut |
| 61 | 2 | Obtain Locally | 1/8" x 1 1/2" Cotter Pin |
| 62 | 2 | LS400332 | Hub Cap |
| 63 | 1 | Obtain Locally | 1/2" x 3 1/2" Gr. 5 Hex Cap Screw |
| 64 | 2 | P7910 | Clip Pin |
| 65 | 1 | P7731A | Cylinder Pin |
| 66 | 1 | FW17316 | Flat Washer |
| 67 | 2 | HC390347 | Tube Fitting |
| 68 | 1 | HC390346 | 1/2" Diameter Steel Tube |
| 69 | 1 | HC390320 | 3/4" NPT x 3/4" 90° Fitting |
| 70 | 1 | HC390343 | 1/2" - 1/2" Hex Nipple |
| 71 | 1 | HC390311 | 3/4" - 1/2" Reducer Bushing |
| 72 | 1 | HC390429A | Handle (Valve) |
| | 1 | HC390434 | Chain Link for Valve Handle |
| | 1 | HC390435 | Valve Handle Mounting Bracket |
| 73 | 1 | Obtain Locally | 1/2" NC Hex Nut |
| 74 | 1 | LS401174 | 1 1/4" I.D. Grommet |
| 75 | 1 | HC390302 | Swivel Elbow 90° |
| | 1 | LS401156 | Hardware Kit |

REPLACEMENT FILTER CARTRIDGE HC390601 INTERCHANGES WITH:

FRAM 1653A
 NAPA 1553
 Cross #1A9023
 Baldwin #BT839
 Wicks #51553

REPAIR KITS:

DESCRIPTION:

| | |
|-----------|---|
| HC390120F | O-Ring Kit for 4" x 24" Cylinder |
| HC390171 | O-Ring Kit for 4 1/2" x 24" Cylinder HC390119 |
| HC390126 | O-Ring Kit for 5" x 24" Cylinder HC390117 |
| HC390423 | O-Ring Kit for Valves HC390406A and HC390406S |
| HC390720B | O-Ring Kit for Pumps HC390705B and HC390709 |

7 LIMITED WARRANTY



GEARMORE, INC., warrants each new Gearmore product to be free from defects in material and workmanship for a period of twelve (12) months from date of purchase to the original purchaser. This warranty shall not apply to implements or parts that have been subject to misuse, negligence, accident, or that have been altered in any way.

Our obligation shall be limited to repairing or replacement of any part, provided that such part is returned within thirty (30) days from date of failure to Gearmore through the dealer from whom the purchase was made, transportation charges prepaid.

This warranty shall not be interpreted to render us liable for injury or damages of any kind or nature, direct, consequential or contingent, to person or property. This warranty does not extend to loss of crops, loss because of delay in harvesting or any other expenses, for any other reasons.

Gearmore in no way warrants engines, tires, or other trade accessories, since these items are warranted separately by these respective manufacturers.

Gearmore reserves the right to make improvements in design or changes in specification at any time, without incurring any obligations to owners or units previously sold.

GEARMORE, INC.
13477 Benson Ave.
Chino, CA 91710

Always refer to and heed machine operating warning decals on machine.

The serial number of this product is stored in our computer database, thus submitting a warranty registration card is not required.