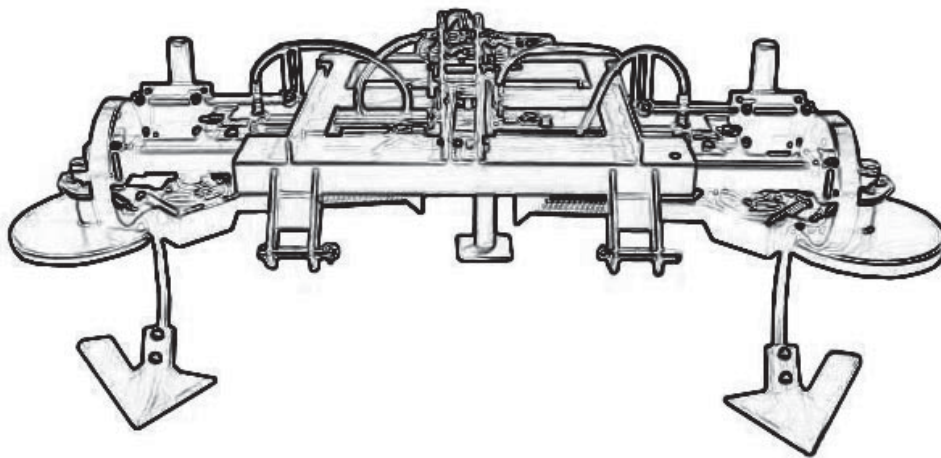


**GEARMORE INC.**

# SPIN WEEDERS



**Set-Up, Operation & Parts  
Manual  
2011 Models**

# TABLE OF CONTENTS

| <b>SECTION</b> | <b>DESCRIPTION</b>                         | <b>PAGE</b>  |
|----------------|--|--------------|
| <b>1</b>       | <b>Introduction .....</b>                  | <b>1</b>     |
| 1.1            | Operator's Responsibility .....            | 1            |
| <b>2</b>       | <b>Safety.....</b>                         | <b>2-4</b>   |
| 2.1            | General Safety .....                       | 3            |
| 2.2            | Equipment Safety Guidelines.....           | 4            |
| <b>3</b>       | <b>Set-Up &amp; Assembly .....</b>         | <b>5</b>     |
| 3.1            | Setting Spin Weeder's Spring Tension ..... | 5            |
| 3.2            | Setting The Overall Width.....             | 5            |
| 3.3            | Placement of 18" Half Sweeps .....         | 5            |
| 3.4            | Placement of Spin Weeder .....             | 5            |
| 3.5            | Lubrication .....                          | 5            |
| <b>4</b>       | <b>Parts Lists .....</b>                   | <b>6 - 8</b> |
| 4.1            | Spin Weeder Assembly.....                  | 6            |
| 4.2            | Part Numbers .....                         | 7 - 8        |
| <b>5</b>       | <b>Limited Warranty.....</b>               | <b>9</b>     |

# 1 INTRODUCTION

Congratulations on your choice of our Spin Weeder. This equipment has been designed and manufactured to meet the needs of a discriminating buyer for the efficient control of weeds without the use of chemicals. The Spin Weeders come with 2 different mounting systems - Fixed frames, and hydraulic adjustable frames from 8' to 12' rows. The fixed and hydraulic frames are available in rear tractor mount.

## 1.1 OPERATOR'S RESPONSIBILITY

Safe, efficient and trouble free operation of your Spin Weeder requires that you and anyone else who will be operating or maintaining the machine, read and understand the Safety, Operation, Maintenance and Troubleshooting information contained within the Operator's Manual.

Keep this manual handy for frequent reference and to pass on to new operators or owners. Call your Gearmore dealer if you need assistance, information or additional copies of the manuals.

**OPERATOR ORIENTATION** - The directions left, right, front and rear, as mentioned throughout this manual, are as seen from the driver's seat and facing in the direction of travel.

### CUSTOMER INFORMATION

**NAME:** \_\_\_\_\_

**PURCHASED FROM:** \_\_\_\_\_

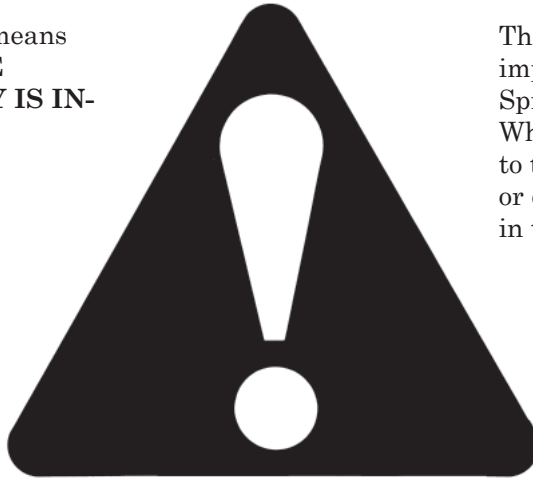
**DATE OF PURCHASE:** \_\_\_\_\_

**MODEL NUMBER:** \_\_\_\_\_

**SERIAL NUMBER:** \_\_\_\_\_

### SAFETY ALERT SYMBOL

This Safety Alert symbol means **ATTENTION! BECOME ALERT! YOUR SAFETY IS INVOLVED!**



The Safety Alert symbol identifies important safety messages on the Spin Weeder and in the manual. When you see this symbol, be alert to the possibility of personal injury or death. Follow the instructions in the safety message.

Why is SAFETY important to you?

#### 3 Big Reasons

**Accidents Disable and Kill**  
**Accidents Cost**  
**Accidents Can Be Avoided**

#### SIGNAL WORDS:

Note the use of the signal words **DANGER**, **WARNING** and **CAUTION** with the safety messages. The appropriate signal word for each message has been selected using the following guide-lines:

**SI NO LEE INGLES, PIDA AYUDA A AIGUIEN QUE SI LO LEA PARA QUE LE TRADUZCA LAS MIDIDAS DE SEGURIDAD.**

**DANGER** - Indicates an imminently hazardous situation that, if not avoided, will result in death or serious injury. This signal word is to be limited to the most extreme situations typically for machine components which, for functional purposes, cannot be guarded.

**WARNING** - Indicates a potentially hazardous situation that, if not avoided, could result in death or serious injury, and includes hazards that are exposed when guards are removed. It may also be used to alert against unsafe practices.

**CAUTION** - Indicates a potentially hazardous situation that, if not avoided, may result in minor or moderate injury. It may also be used to alert against unsafe practices.

If you have any questions not answered in this manual or require additional copies or the manual is damaged, please contact your dealer.

## 2.1 GENERAL SAFETY

**YOU** are responsible for the **SAFE** operation and maintenance of your Spin Weeder. **YOU** must ensure that you and anyone else who is going to operate, maintain or work around the Spin Weeder be familiar with the operating and maintenance procedures and related **SAFETY** information contained in this manual. This manual will take you step-by-step through your working day and alerts you to all good safety practices that should be adhered to while operating the Spin Weeder.

Remember, **YOU** are the key to safety. Good safety practices not only protect you, but also the people around you. Make these practices a working part of your safety program. Be certain that **EVERYONE** operating this equipment is familiar with the recommended operating and maintenance procedures and follows all the safety precautions. Most accidents can be prevented. Do not risk injury or death by ignoring good safety practices.

- Spin Weeder owners must give operating instructions to operators or employees before allowing them to operate the machine, and at least annually there after per OSHA (Occupational Safety and Health Administration) regulation 1928.57.
- The most important safety feature on this equipment is a **SAFE** operator. It is the operator's responsibility to read and understand **ALL** Safety and Operating instructions in the manual and to follow these. Most accidents can be avoided.
- A person who has not read and understood all operating and safety instructions is not qualified to operate the machine. An untrained operator exposes himself and bystanders to possible serious injury or death.
- **DO NOT** modify the equipment in any way. Unauthorized modification may impair the function and/or safety and could affect the life of the equipment.
- **Think SAFETY! Work SAFELY!**

1. Read and understand the Operator's Manual and all safety signs before operating, maintaining adjusting or unplugging the Spin Weeder.



2. Have a first-aid kit available for use should the need arise and know how to use it.

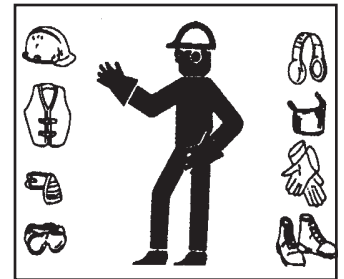


3. Have a fire extinguisher available for use should the need arise and know how to use it.



4. Wear appropriate protective gear. This list includes but is not limited to:

- A hard hat
- Protective shoes with slip resistant soles
- Protective goggles, glasses or face shield
- Heavy gloves
- Protective clothing



5. Install and secure all guards before starting.

6. **DO NOT** allow riders.

7. Wear suitable ear protection for prolonged exposure to excessive noise.



8. Place all controls in neutral, stop tractor engine, set park brake, remove ignition key and wait for all moving parts to stop before servicing, adjusting, repairing, or unplugging.

9. Clear the area of people, especially small children, before starting.

10. Review safety related items annually with all personnel who will be operating or maintaining the Spin Weeder.

## 2.2 EQUIPMENT SAFETY GUIDELINES

Safety of the operator and bystanders is one of the main concerns in designing and developing a machine. However, every year many accidents occur which could have been avoided by a few seconds of thought and a more careful approach to handling equipment. You, the operator, can avoid many accidents by observing the following precautions in this section. To avoid personal injury or death, study the following precautions and insist those working with you, or for you, follow them.

- In order to provide a better view, certain photographs or illustrations in this manual may show an assembly with a safety shield removed. However, equipment should **never** be operated in this condition. Keep all shields in place. If shield removal becomes necessary for repairs, replace the shield prior to use.
- Replace any safety sign or instruction sign that is not readable or is missing. Location of such safety signs is indicated in this manual.
- **NEVER** use alcoholic beverages or drugs which can hinder alertness or coordination while operating this equipment. Consult your doctor about operating this machine while taking prescription medications.
- **Under no circumstances should young children be allowed to work with this equipment. Do not allow persons to operate or assemble this unit until they have read this manual and have developed a thorough understanding of the safety precautions and of how it works.** Review the safety instructions with all users annually.
- This equipment is dangerous to children and persons unfamiliar with its operation. The operator should be a responsible, properly trained and physically able person familiar with farm machinery and trained in this equipment's operations. If the elderly are assisting with farm work, their physical limitations need to be recognized and accommodated.
- Use a tractor equipped with a Roll Over Protective Structure (ROPS) and a seat belt.
- **NEVER** exceed the limits of a piece of machinery. If its ability to do a job, or to do so safely, is in question - **DON'T TRY IT.**
- Do not modify the equipment in any way. Unauthorized modification may impair the function and/or safety and could affect the life of the equipment.

In addition to the design and configuration of this implement, including Safety Signs and Safety Equipment, hazard control and accident prevention are dependent upon the awareness, concern, prudence and proper training of personnel involved in the operation, transport, maintenance and storage of the machine. Refer also to Safety Messages and operation instruction in each of the appropriate sections of the tractor and machine manuals. Pay close attention to the Safety Signs affixed to the tractor and the machine.

**Think SAFETY! Work SAFELY!**

## 3 SET-UP - DOUBLE SPIN WEEDERS

To insure quality the units come completely assembled in the following manner.

### 3.1 SETTING SPIN WEEDERS SPRING TENSION

1. It is not possible to preset the spin weeder's spring tension at the factory for your field conditions. The amount of tension will vary based on how hard the ground and how deep you are tilling. The spring pressure should be enough to lift the weeds out of the ground and roll around the plant base.
2. If you feel the spring tension is too aggressive for your conditions, just loosen the spring screw to reduce the pressure.
3. If you feel the wheel does not have enough tension, just tighten the spring.

### 3.2 SETTING THE OVERALL WIDTH

1. If you only have one spin weeder, the overall width is not as important, just position the tractor so that the outer edge of the weeder wheel is just beyond the row line.
2. If you have a double spin weeder (right and left hand), the overall width of the unit should be first set at approximately 4 inches wider than your row width.

### 3.3 SETTING THE PLACEMENT OF THE 18" HALF SWEEPS

1. Set the 18" half sweep with the long end facing out.
2. Set the 18" half sweep no more than half way under the spin weeder wheel. If you find that you are moving too much soil, move the half sweep so that you are covering approximately  $\frac{1}{4}$  of the wheel.
3. If you are still moving too much soil, remove the half sweeps.

### 3.4 SETTING THE SPIN WEEDER IN THE FIELD

1. The spin weeder wheel is bolted approximately 3 inches above the 18" half sweep.
2. To start with, have 10 threads showing on the spring shaft. Then loosen if too much tension on the spring or tighten if more tension is required.
3. Tilt the spin weeder down in front approximately 5 to 10 degrees to aid cutting into the soil.
4. Set the spin weeders approximately 4" on each side beyond the row line. Just the "spring back" going through the soil will pull back the spin weeder wheel, usually in a couple of inches. When going through the soil you will want the spin weeders about 2 inches beyond the row line. In most cases, you need to dig into the soil approximately 2" which is figured from the bottom of the wheels. If your berm is higher, it is possible to go deeper.
5. In order for the spin weeder to operate correctly the berm needs to be at least 2" high so that the spring is not in tension at all times. If the soil is extremely hard, it may be necessary to make two passes until you can get beyond the row line. Once you loosen the hard soil, the next time you weed it will not be necessary to make two passes.

Always remember the spin weeder works best at a minimum of 5 miles per hour and a maximum of 7 miles per hour.

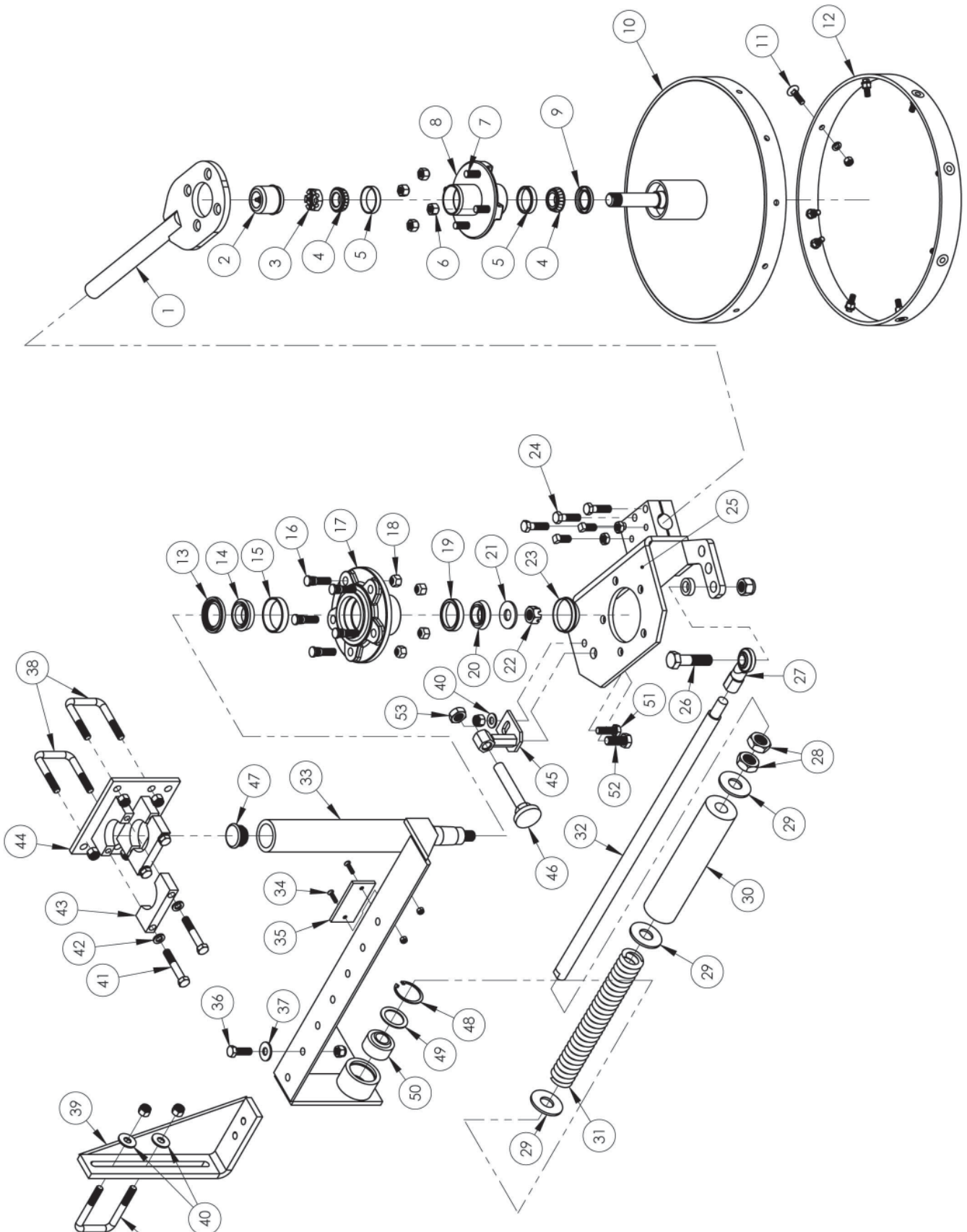
### 3.5 LUBRICATION

The spin weeder wheel hubs should have a couple shots of grease every 50 hours.

From time to time, we recommend spraying the spring and shaft with industrial spray lubricate.

# 4 PARTS LISTS

## 4.1 KW-1800 RH/LH SPIN WEEDER ASSEMBLY





## 4 PARTS LISTS (CONTINUED)

### 4.2 KW-1800 RH/LH SPIN WEEDER ASSY PART NUMBERS

| <u>REF.</u> | <u>QTY.</u> | <u>PART NO.</u>         | <u>DESCRIPTION</u>  |
|-------------|-------------|-------------------------|---|
| 1           | 1           | KW-2120                 | Arm Weldment  |
| 2           | 1           | TR-884                  | Sure Lube Grease Cap  |
| 3           | 1           | 3167                    | 1" Slotted Nut  |
| 4           | 2           | 3164                    | Bearing L44643  |
| 5           | 2           | 3165                    | Race L44610   |
| 6           | 4           | 3170                    | ½" Lug Nut  |
| 7           | 4           | KW-0148                 | ½" NF Stud  |
| 8           | 1           | KW-2111                 | Hub Group Complete w/Bearings, Races, Cap, Seal & Lug Nuts    |
| 9           | 1           | 3163                    | Hub Seal  |
|             | 1           | 3168                    | Cotter Pin (not shown)  |
| 10          | 1           | KW-2110                 | Head Weldment   |
| 11          | 12          | G-375-1.25-NCFHSCS-HNLW | ⅜" x 1 ¼" NC Flat Head Socket Capscrew w/Hex Nut & Lockwasher |
| 12          | 1           | KW-0140                 | ¼" UHMW Wear Strip ( <i>not drilled</i> )                     |
| 13          | 1           | G-SL-175                | Bearing Seal (RTM SL-175)                                     |
| 14          | 1           | G-LM48548               | Inner Spindle Bearing LM48548                                 |
| 15          | 1           | G-LM48510               | Inner Bearing Race LM48510                                    |
| 16          | 5           | G-ST-504                | ½" - 20 NF - 2 ¼" Stud  |
| 17          | 1           | HR-2654                 | Hub w/Studs, Bearings and Seal                                |
| 18          | 5           | G-STN-509               | ½" - 20 NF Lug Nut  |
| 19          | 1           | HR-0377                 | Outer Baring Race LM67010                                     |
| 20          | 1           | HR-0376                 | Outer Spindle Bearing LM67048                                 |
| 21          | 1           | HR-0382                 | ¾" Spindle Washer (RTM SW-750)                                |
| 22          | 1           | HR-381                  | Spindle Nut ¾" NF Slotted (RTM SN-750)                        |
|             | 1           | HR-0384                 | Cotter Pin ⅝" x 1 ½" (not shown)                              |
| 23          | 1           | HR-0375                 | Grease Cap  |
| 24          | 3           | G-5-1.5NFCS             | ⅜" x 1 ½" Gr. 5 NC Cap Screw                                  |
| 25          | 1           | KW-2100A                | Right Hand Pivot Bracket Weldment                             |
|             | 1           | KW-2101A                | Left Hand Pivot Bracket Weldment (not shown)                  |
| 26          | 1           | G-75-3-NCCS-NN          | ¾" x 2 ½" Gr. 5 NC Cap Screw w/Nylock Nut                     |
| 27          | 1           | KW-0147                 | ¾" NF Greaseable Ball Joint                                   |
| 28          | 2           | G-1-NFHJN               | 1" x -14 NF Hex Jam Nut                                       |
| 29          | 3           | TR-670                  | 1" SAE Flat Washer  |
| 30          | 1           | KW-0120                 | 2" OD x 1" ID Polyurethane Bumper cushion - 12 ½"             |
| 31          | 1           | KW-0145                 | Compression Spring - 12 ¾" Long                               |
| 32          | 1           | KW-0130                 | Guide Shaft   |
| 33          | 1           | KW-2130                 | Right Hand Pivot Weldment                                     |
|             | 1           | KW-2131                 | Left Hand Pivot Weldment (not shown)                          |
| 34          | 2           | G-25-1.25-SFHMS-NN      | ¼" x 1" NC Slotted Flat Head Machine Screw w/Nylock Nut       |
| 35          | 1           | KW-0135                 | UHMW ¼" x 2" -- 4" Long                                       |
| 36          | 1           | G-5-1.5-NCCS-NN         | ½" x 1 ½" Gr. 5 NC Cap Screw w/Nylock Nut                     |
| 37          | 5           | TR-668                  | ½" SAE Flat Washer  |

## 4 PARTS LISTS (CONTINUED)

### 4.2 KW-1800 RH/LH SPIN WEEDER ASSY PART NUMBERS (CONTINUED)

| <u>REF.</u> | <u>QTY.</u> | <u>PART NO.</u> | <u>DESCRIPTION</u>                        |
|-------------|-------------|-----------------|---|
| 38          | 3           | BB-0135         | ½" x 2 ½" x 4" NC U-bolt w/Nylock Nuts    |
| 39          | 1           | KW-2150-A       | Anchor Bracket                            |
| 40          | 3           | G-5-FW          | ½" USS Flat Washer                        |
| 41          | 4           | G-5-3-NCCS      | ½" x 3" Gr. 5 NC Cap Screw                |
| 42          | 4           | G-5-LW          | ½" Lock Washer                            |
| 43          | 2           | KW-0100         | Pivot Clamp Block                         |
| 44          | 1           | KW-2140         | Pivot Clamp Base                          |
| 45          | 1           | KW-0155         | Pivot Mount                               |
| 46          | 1           | KW-0156         | Adjustable Stop                           |
| 47          | 1           | KW-0149         | Plastic Cap                               |
| 48          | 1           | KW-0112         | Internal Snap Ring                        |
| 49          | 1           | KW-0116         | Machined Washer                           |
| 50          | 1           | KW-0113         | Shaft Bearing, 1"                         |
| 51          | 1           | G-5-1.5-NCCS-NN | ½" x 1 ½" Gr. 5 NC Cap Screw w/Nylock Nut |
| 52          | 1           | G-625-1.5-NCCS  | ⅝" x 1 ½" Gr. 5 NC Cap Screw              |
| 53          | 1           | G-75-NCJN       | ¾" NC Jam Nut                             |

## 5 LIMITED WARRANTY



GEARMORE, INC., warrants each new Gearmore product to be free from defects in material and workmanship for a period of twelve (12) months from date of purchase to the original purchaser. This warranty shall not apply to implements or parts that have been subject to misuse, negligence, accident, or that have been altered in any way.

Our obligation shall be limited to repairing or replacement of any part, provided that such part is returned within thirty (30) days from date of failure to Gearmore through the dealer from whom the purchase was made, transportation charges prepaid.

This warranty shall not be interpreted to render us liable for injury or damages of any kind or nature, direct, consequential or contingent, to person or property. This warranty does not extend to loss of crops, loss because of delay in harvesting or any other expenses, for any other reasons.

Gearmore in no way warrants engines, tires, or other trade accessories, since these items are warranted separately by these respective manufacturers.

Gearmore reserves the right to make improvements in design or changes in specification at any time, without incurring any obligations to owners or units previously sold.

GEARMORE, INC.  
13477 Benson Ave.  
Chino, CA 91710

Always refer to and heed machine operating warning decals on machine.

*The serial number of this product is stored in our computer database, thus submitting a warranty registration card is not required.*