



ROTARY TILLER

**Operation, Service
& Parts Manual For
“SB” Series**

November 2001

TABLE OF CONTENTS

Preparation	1
Assembly Instructions	2
Connection to Tractor	3
General Maintenance	4
Safety Information	5
Safety Decals	6-8
Troubleshooting	9
Replacing Clutch Linings	10
Tiller Assembly	11-14
Tiller Tine Chart	15
Gearbox Assembly	16-17
Optional Tailboard & Skid Shoes	18
Optional Roller Assembly	19-22
Optional Roller Tailboard	23
Optional Comb Assembly	24-26
Driveline Assembly	27
Limited Warranty	28

Date of Purchase: _____

Model Number: _____

Serial Number _____

PREPARATION

WARNING

To prevent possible personal injury or death during assembly, installation, operation, adjustment, or removal of implement, **DO NOT** wear loose clothing, always wear gloves and safety glasses or face shield. **Keep other persons a minimum of twenty-five (25) feet away from any unit under power.**



READ THIS BEFORE OPERATING TILLER

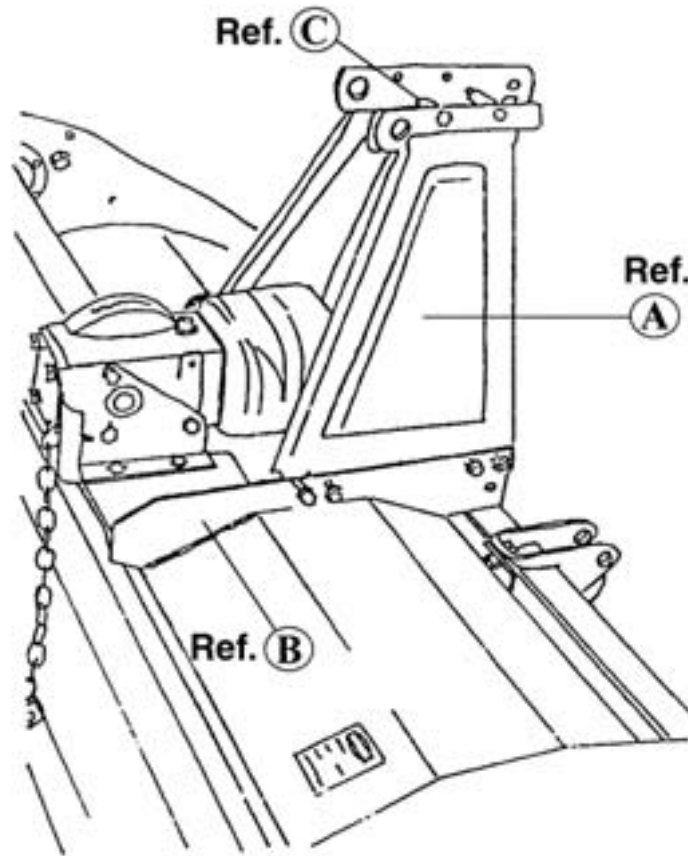
TRAINING

Know your controls. Read this operator's manual and the manual provided with your tractor. Learn how to stop the tractor engine and tiller quickly, in case of an emergency. **DO NOT** allow children to operate machine, or adults to operate it without proper instructions.

PREPARATION

- Clear area of debris.
- Never permit any person other than the operator to ride on board the tractor at any time.
- **DO NOT** allow riders on tiller at any time.
- Operate only in daylight or good artificial light.
- Ensure all safety shielding is properly installed.
- Always wear relatively tight and belted clothing when operating tiller. Loose clothing should not be worn, as it could get caught in the moving parts or controls.

ASSEMBLY INSTRUCTIONS



1. With Tiller on bottom pallet, install a-frame mast (Ref. A). *Note:* The mast mounts on the inside of the rails (Ref. B).
2. Install spacer (Ref. C) between the two a-frame masts using supplied bolt and nut.
3. Tighten all bolts and nuts.
4. Install PTO driveline to tiller gearbox. *Note:* The slip clutch assembly goes to the tiller gearbox.
5. Check oil in gearbox and chain case.

CONNECTION TO TRACTOR

Your Gearmore Rotary Tiller can be attached to tractors having a Category “I” or Category “II”, 3-point hitch.

1. Attach the lower link arms of the tractor to the lower attaching brackets of the tiller by inserting the pins.
2. Attach the top link of the 3-point hitch to the tiller. Next, tighten the lower link arm check chains to prevent any horizontal movement of the tiller, which could cause damage during operation. Adjust the unit so the drive shaft is parallel to the ground in the working position. Adjust the tractor lift linkage or the hydraulic lever lifting stops to prevent the tiller being lifted more than 6” from the ground. This will avoid any damage to the universal joints.
3. Attach the drive shaft, first to the tiller input shaft and then to the PTO of the tractor. Make sure the yokes are locked on to the tractor and tiller shaft.

SLIP CLUTCH DRIVE SHAFT:

This tiller has a drive shaft with a slip clutch, which has been calibrated for a certain overload. To adjust the clutch, tighten or loosen bolts equally. Don't over-tighten or clutch will lock and not slip under stress, which could cause damage during operation. The clutch assembly should get warm under normal operation. If the clutch gets extremely hot, this is a sign of slippage. If the machine sits for an extended period of time with no usage, the bolts should be loosened and the PTO engaged. This will allow the clutch discs to become free again. After a few seconds, shut-off the tractor and retighten bolts equally. Recheck clutch assembly for temperature after using in tilling application. If it is too hot, the bolts need tightening. If it is too cool, loosen bolts.

SET SIDE SKIDS FOR WORKING DEPTH:

To regulate working depth, loosen the nuts of the skids and adjust them to the desired position. Set skids equally on both sides.

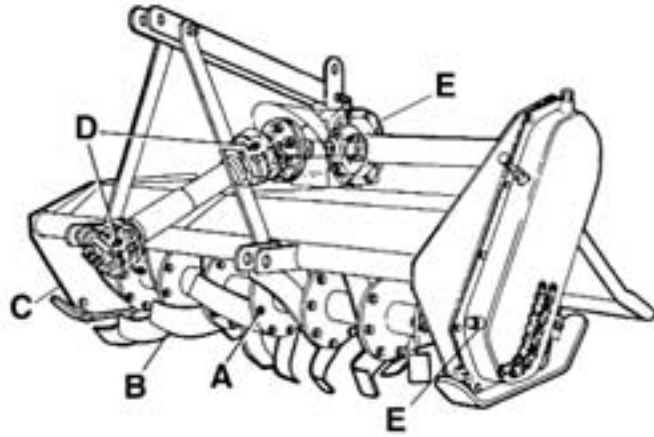
TRANSMISSION CHAIN TENSION:

Your Gearmore Rotary Tiller has an automatic chain tensioner, so no adjustment is necessary.

TINES:

When the complete set of tines has to be replaced, it is advisable to replace one at a time to insure that the new tines are mounted in the same position as the old ones. It is important to fit the bolts with the heads to the side of the tine and the nuts and washers to the side of the flange. It is also recommended to replace all washers with new ones at the time of tine replacement.

GENERAL MAINTENANCE



Carefully follow all instructions as stated in this operator's manual, this includes safety, assembly, operation, lubrication and maintenance of the tiller.

1. Check lubrication - See Lubrication Section.
2. Check bolts and nuts for tightness (Ref. A).
3. Check tiller daily for loose, worn or broken tines (Ref. B).
4. Replace, **immediately**, any damaged or worn parts.

LUBRICATION

GEARBOX & CHAIN CASE:

Fill gearbox and chain case to level plug (Ref. E) with gear oil. Use SAE #140 multi-gear lubricant or equivalent. Gear oil should be checked weekly and changed *every 400 hours* of use.

ROTOR SHAFT:

Lubricate rotor spindle (Ref. C) *daily*. **NOTE:** Grease zerk located on the side of the tiller.

DRIVE SHAFT:

Grease both cross and shield bearings (Ref. D). After that grease *every 8 hours* of use. It is also necessary, from time to time, to untelescope the drive shaft to clean and re-grease tubing.

NOTE: Driveshafts with a slip clutch do not have a grease zerk on the clutch assembly.

WARNING - DO NOT OPERATE TILLER UNLESS ALL SHIELDS ARE IN PLACE

SAFETY INFORMATION

Guards and safety shields are for your protection. **DO NOT** operate equipment unless they are in place.

Always operate tractor PTO (power take-off) at recommended RPM (revolutions per minute).

Disengage tractor PTO and shift into neutral before attempting to start engine.

Read and observe all safety decals on the tractor and tiller.

NEVER allow anyone within 25' of machine while it is in operation.

Do not stop or start suddenly when going uphill or downhill. Avoid operation on steep slopes.

Be alert for holes in terrain and other hidden hazards. Always drive slowly over rough ground.

Reduce speed on slopes and in sharp turns to prevent tipping or loss of control. Be careful when changing direction on slopes.

Stop tiller and tractor immediately upon striking an obstruction. Turn off engine, inspect tiller, and repair any damage before resuming operation.

Disengage power to tiller and stop engine before dismounting from tractor, before making any repairs or adjustments, transporting, or unclogging tiller.

Take all possible precautions when leaving tractor unattended: Disengage PTO, lower tiller, shift into neutral, set parking brake, stop engine and remove key from ignition.

Front tractor weights or front tire ballast should be used to enhance front end stability on small tractors.

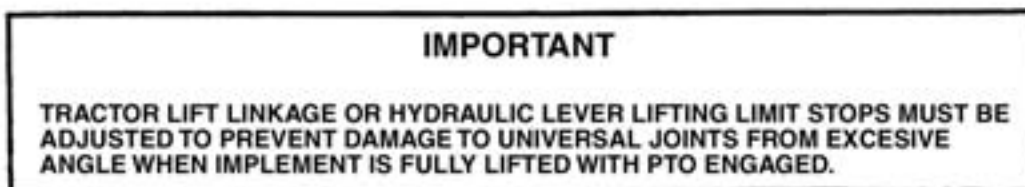
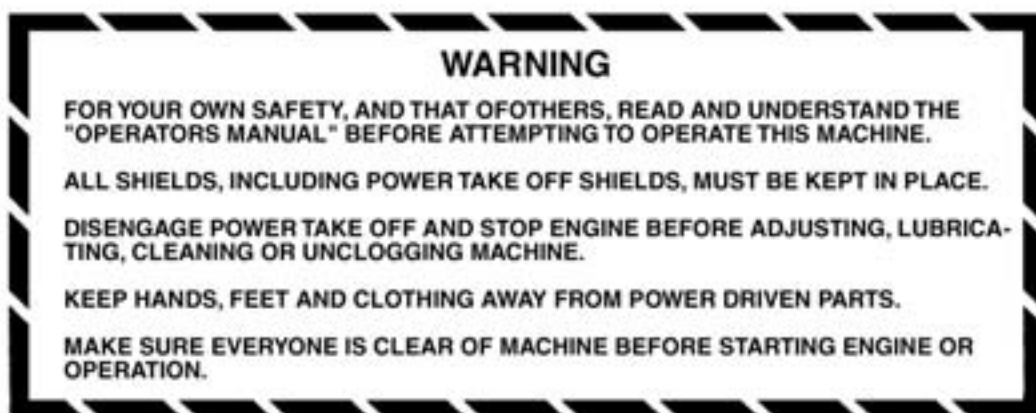
Check to make sure PTO is properly connected and that the driveline is correct to prevent bottoming out or pulling apart during the full lift range of the hitch.

Never work under tiller without safety blocks.

This implement is designed for a one-man operation. It is the responsibility of the tractor operator to see that no one is in the proximity of the implement when it is started. **DO NOT** operate the implement with another person within 25' of the implement or PTO drive.

TILLER SAFETY DECALS

1. Keep all safety decals and signs clean and legible at all times.
2. Replace safety decals and signs that are missing or have become illegible. (Contact Gearmore at 909/548-4848 for *free* replacement safety decals.)



TILLER SAFETY DECALS



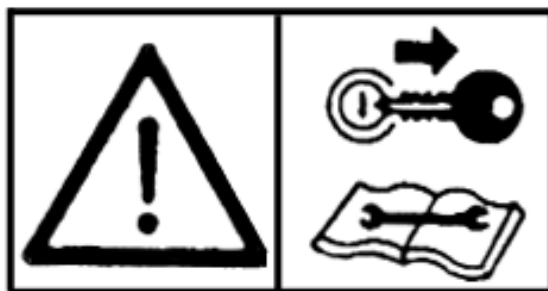
DANGER: Hands and feet could be severely injured. Keep away from rotating parts.



DANGER: Do not stay behind the machine as it could roll over you.



DANGER: Never get near to the PTO shaft while it is in operation. ACCIDENTAL CONTACT COULD CAUSE DEATH.



Stop both the machine and the tractor before performing any service.

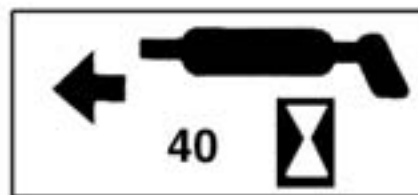
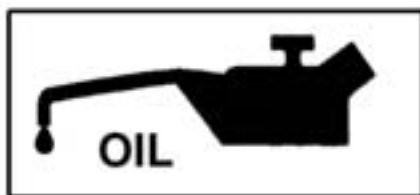
TILLER SAFETY DECALS



DANGER: The machine could throw heavy or sharp objects. Keep at a safe distance from the machine.



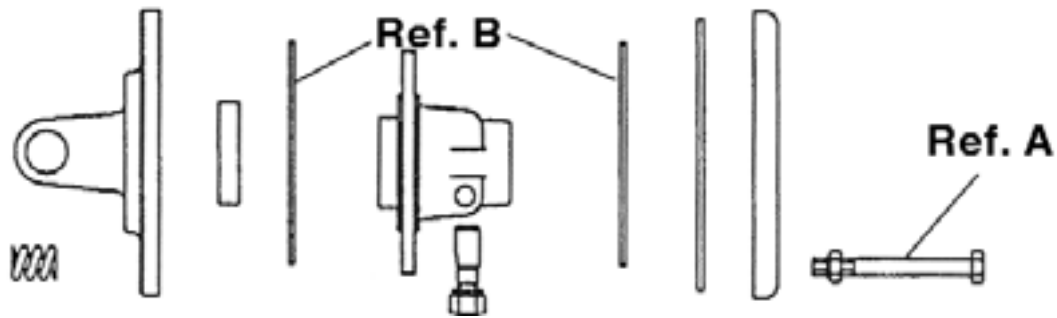
Please carefully read and understand the operating instructions before using the machine.



TROUBLESHOOTING CHART

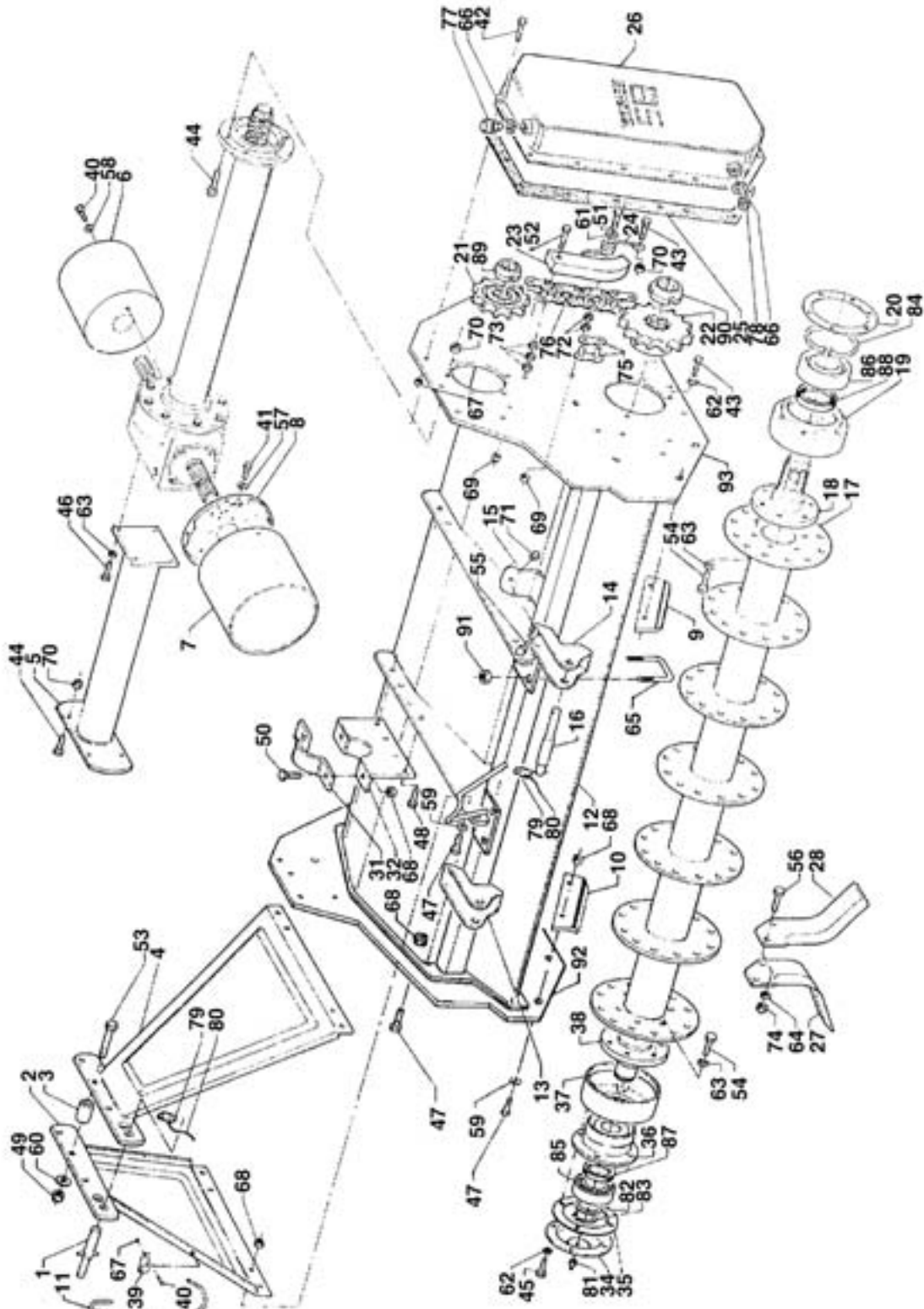
PROBLEM	CAUSE	SOLUTION
Excessive vibration	Drive shaft damaged	Replace worn drive shaft
	Tines broken off	Replace damaged tines
	Bent rotor shaft	Replace rotor shaft
Rotor shaft does not turn	PTO Clutch slipping	Check slip clutch adjustment
		Replace clutch discs
Tilling deeper on one side	Tractor lower lift arm out of adjustment	Adjust lift arm
	Tiller depth skid not properly adjusted	Adjust skids to level depth
Tiller bouncing	Trying to go too deep on first pass	Raise tiller so tilling 3" deep
	Tractor in too high a gear	Tiller runs smoother in first or second gear
Leaving tire tracks	Tires set out too wide	Set in tractor tires
	Tractor too large	Offset tiller to cover right tire tracks
PTO will not untelescope	Improper lubrication	Separate and grease both halves
	PTO twisted	Replace twisted parts
	Shields damaged	Replace shields

REPLACING CLUTCH LININGS



1. Mount clutch assembly in vise.
2. Remove all bolts and nuts (Ref. A).
3. Disassemble all components.
4. Check the condition of all parts, friction plates especially.
5. Replace clutch linings (Ref. B).
6. Reassemble the components, install spring with their corresponding bolts and nuts.
7. Tighten nuts following an alternating cross pattern until reaching a height of 27 mm (1.063").
8. Check that the height is the same for all springs.
9. Reinstall driveline, making sure all shields are in place.

TILLER ASSEMBLY



TILLER ASSEMBLY

<u>REF#</u>	<u>QTY.</u>	<u>PART NO.</u>	<u>DESCRIPTION</u>
1	1	76.65.0015	3-Point Pin
2	1	73.68.0008	R.H. Side Plate 3-Point (s/n ----- 02626)
2A	1	73.68.0004	R.H. Side Plate 3-Point (s/n 02627 -----)
3	2	72.80.0015	Spacer 3-Point
4	1	73.68.0009	L.H. Side Plate 3-Point (s/n ----- 02626)
4A	1	73.68.0005	L.H. Side Plate 3-Point (s/n 02627 -----)
5	1	76.87.0086	R.H. Spacer 120
5	1	76.87.0041	R.H. Spacer 140
5	1	76.87.0042	R.H. Spacer 165
5	1	76.87.0043	R.H. Spacer 185
5	1	76.87.0045	R.H. Spacer 205
6	1	72.48.0002	PTO Safety Shield (s/n ----- 03065)
6A	1	80.P.11.005	PTO Safety Shield (s/n 03066 -----)
7	1	72.48.0004	PTO Safety Shield
8	1	78.48.0111	PTO Safety Shield Support
9	1	76.71.0130	Bracket L.H. (s/n 03066 -----)
10	1	76.71.0129	Bracket R.H. (s/n 03066 -----)
11	1	74.14.0002	Support PTO
12	1	78.60.0061	Main Frame SB120 (s/n ----- 0779)
12	1	78.60.0062	Main Frame SB140 (s/n ----- 0779)
12	1	78.60.0063	Main Frame SB165 (s/n ----- 0779)
12	1	78.60.0064	Main Frame SB185 (s/n ----- 0779)
12	1	78.60.0065	Main Frame SB205 (s/n ----- 0779)
12A	1	78.60.0087	Main Frame SB120 (s/n 0780 -----)
12A	1	78.60.0088	Main Frame SB140 (s/n 0780 -----)
12A	1	78.60.0089	Main Frame SB165 (s/n 0780 -----)
12A	1	78.60.0090	Main Frame SB185 (s/n 0780 -----)
12A	1	78.60.0091	Main Frame SB205 (s/n 0780 -----)
13	1	71.46.0014	R.H. Lower Hitch
14	1	71.46.0015	L.H. Lower Hitch
15	2	78.44.0003	Lower Hitch Clamp
16	2	76.65.0003	2-Point Pin
17	1	77.85.0011	Rotor - 120
17	1	77.85.0012	Rotor - 140
17	1	77.85.0013	Rotor - 165
17	1	77.85.0014	Rotor - 185
17	1	77.85.0020	Rotor - 205
18	1	75.92.0006	L.H. Rotor Splined Hub
19	1	78.48.0007	L.H. Rotor Support
20	1	74.41.0013	Rotor Gasket Drive Side
21	1	76.75.0021	Sprocket Z - 10 1 - 1/2"
21	1	76.75.0022	Sprocket Z - 11 1 - 1/2"
22	1	76.75.0023	Sprocket Z - 13 1 - 1/2"
22	1	76.75.0024	Sprocket Z - 14 1 - 1/2"
23	1	78.63.0003	Chain Stretcher
24	1	75.85.0005	Chain Stretcher Spring
25	1	74.41.0005	Chain Case Gasket

TILLER ASSEMBLY

<u>REF#</u>	<u>QTY.</u>	<u>PART NO.</u>	<u>DESCRIPTION</u>
26	1	72.14.0011	Chain Case
27	See Pg. 15	79.66.0011	R. H. Curved Tine
28	See Pg. 15	79.66.0012	L. H. Curved Tine
31	1	72.21.0001	Gearbox Clamp
32	1	78.48.0102	Gearbox Support (s/n ----- 02626)
32A	1	78.48.0103	Gearbox Support (s/n 02627 -----)
33	2	78.44.0065	Spring Support
34	1	72.44.0017	Ext. Rotor Cover
35	1	74.41.0030	Rotor Cover Gasket
36	1	78.48.0010	R. H. Rotor Support
37	1	72.48.0005	Rotor Dust Cover
38	1	75.92.0005	R. H. Rotor Hub
39	1	73.58.0002	Bracket
40	2	80.Z.03.108	Bolt M8 x 16 UNI5739
41	3	80.Z.03.110	Bolt M8 x 20 UNI5739
42	16	80.R.03.112	Bolt M8 x 25 UNI5739
43	7	80.Z.03.136	Bolt M10 x 25 UNI5739
44	10	80.Z.03.137	Bolt M10 x 30 UNI5739
45	4	80.R.03.138	Bolt M10 x 35 UNI5739
46	4	80.R.03.158	Bolt M12 x 25 UNI5739
47	8	80.Z.03.159	Bolt M12 x 30 UNI5739
48	4	80.Z.03.160	Bolt M12 x 35 UNI5739
49	4	80.Z.11.017	Nut (s/n ----- 02626)
49A	2	80.Z.11.018	Nut (s/n 02627 -----)
50	2	80.R.01.087	Bolt M12 x 45 UNI5737
51	1	80.R.03.186	Bolt M14 x 50 UNI5737
52	1	80.R.03.190	Bolt M14 x 70 UNI5737
53	2	80.Z.01.115	Bolt M14 x 90 UNI5737 (s/n ----- 02626)
53A	3	80.Z.02.132	Bolt M16 x 1.5 x 100 (s/n 02627 -----)
54	12	80.Z.00.021	Bolt M12 x 1.25 x 30 UNI5740
55	4	80.Z.00.046	Bolt M16 x 1.5 x 50 UNI5740
56	See Pg. 15	80.Z.00.033	Bolt M14 x 1.5 x 40
57	3	80.Z.30.008	Flat Washer 8 x 17 - 1.6
58	2	80.Z.31.108	Flat Washer 9 x 32 - 2
59	4	80.Z.30.012	Flat Washer 13 x 24 - 2.4
60	2	80.Z.30.014	Flat Washer 15 x 28 - 2.5 (s/n ----- 02626)
60A	3	80.Z.30.016	Flat Washer 17 x 30 x 3 (s/n 02627 -----)
61	1	80.Z.30.020	Flat Washer 21 x 37 - 3
62	10	80.S.35.110	Lock Washer 10 x 18
63	15	80.S.35.112	Lock Washer 12 x 22
64	See Pg. 15	80.S.35.114	Lock Washer 14 x 24
65	4	72.21.0014	U-Bolt (s/n 01530 - 02626)
66	2	80.S.38.232	Aluminum Washer 22 x 28
67	16	80.Z.11.009	Nut M8
68	32	80.Z.11.015	Nut M12
69	2	80.Z.11.017	Nut M14
70	9	80.Z.11.012	Nut M10

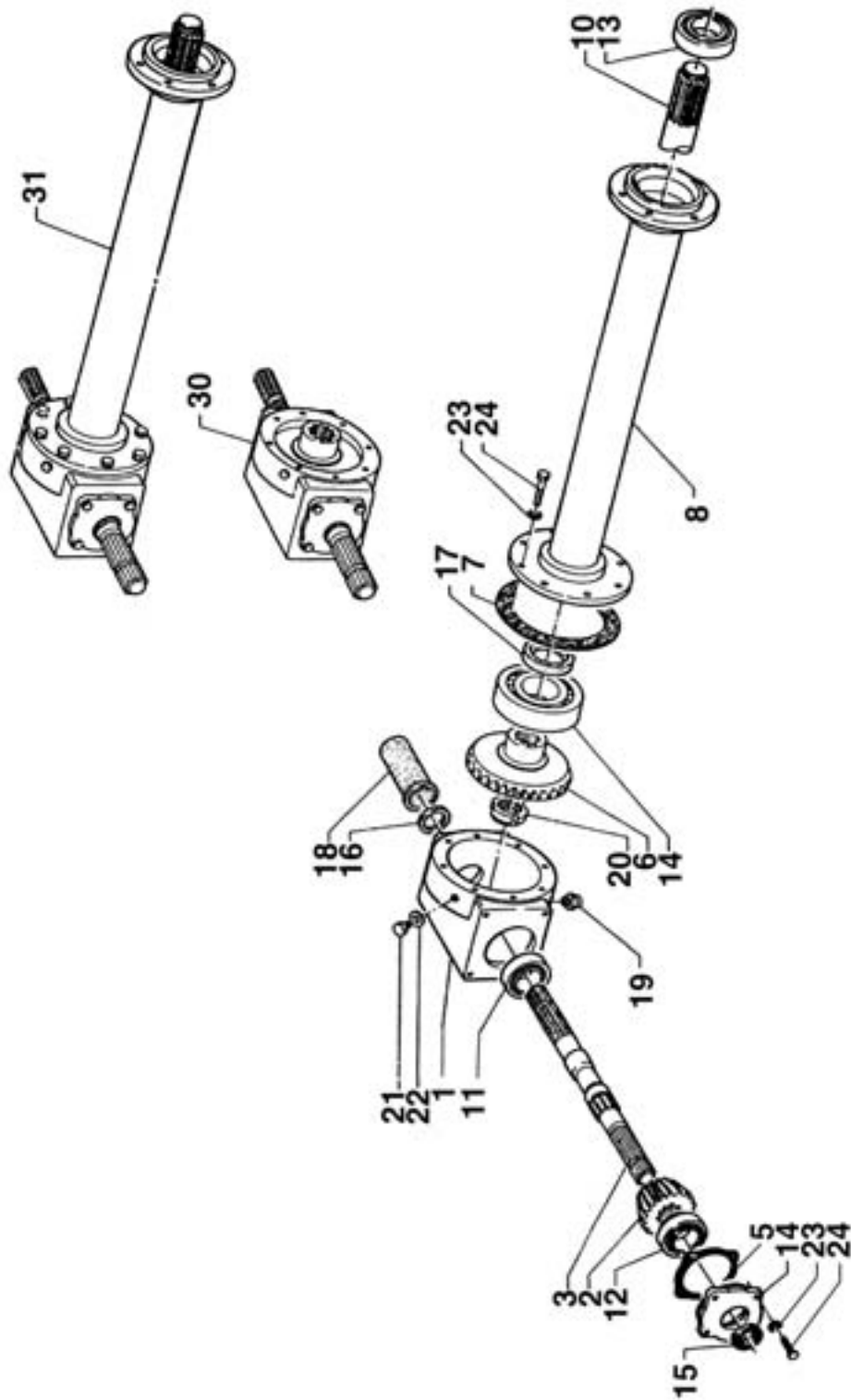
TILLER ASSEMBLY

<u>REF#</u>	<u>QTY.</u>	<u>PART NO.</u>	<u>DESCRIPTION</u>
71	4	80.Z.11.018	Nut M16 x 1.5
72	2	80.S.01.011	Nut M14 UNI5588
73	3	80.S.02.011	Nut M14 UNI5589
74	See Pg. 15	80.Z.08.111	Nut M14 x 1.8 UNI5587
75	1	80.Z.31.930	Chain Link ASA 120 H
76	1	80.A.31.325	Chain ASA - 120 H36 Links
77	1	80.F.90.116	Breather Plug 1/2"
78	1	80.F.90.553	Outlet Plug 1/2"
79	3	80.S.77.015	Locking Pin 10 x 37
80	3	80.P.05.001	Spring
81	1	80.Z.61.010	Grease Nipple M8 x 1.25
82	1	80.S.48.446	Spacer
83	1	80.S.70.040	Snap Ring E40
84	1	80.S.71.110	Snap Ring I110
85	1	6308	Bearing 6308 40 x 90 x 23
86	1	6310	Bearing 6310 50 x 110 x 27
87	1	50X65X8	Oil Seal
88	1	65X85X10	Oil Seal
89	1	80.Z.56.013	Self Locking Nut M40 x 1.5
90	1	80.Z.55.014	Self Locking Nut M45 x 1.5
91	8	80.Z.11.017	Nut M14 (s/n 01530 - 026260)
92	1	73.68.0046	Side Plate (s/n 0780 - 03434)
92A	1	73.68.0039	Side Plate (s/n 03435 - -----)
93	1	73.68.0045	Side Plate L.H. (s/n 0780 - 03434)
93A	1	73.68.0038	Side Plate L.H. (s/n 03435 - -----)

TILLER TINE CHART

TILLER TINE CHART			
MODEL NO.	NUMBER OF TINES		NUMBER OF BOLTS & NUTS
	R.H.	L.H.	
SB120	15	15	60
SB140	18	18	72
SB165	21	21	84
SB185	24	24	96
SB205	27	27	108

GEARBOX ASSEMBLY

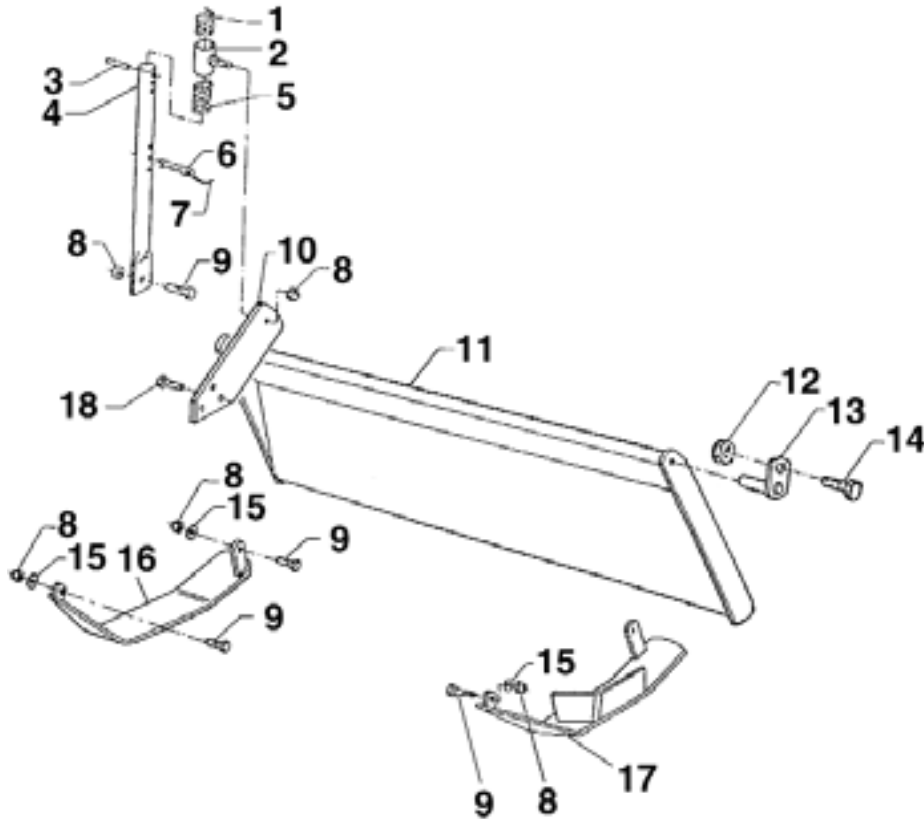


GEARBOX ASSEMBLY

<u>REF#</u>	<u>QTY.</u>	<u>PART NO.</u>	<u>DESCRIPTION</u>
1	1	78.04.0007	Gearbox Housing
2	1	76.75.0032	Bevel Pinion Z14
3	1	71.12.0035	Through Input Shaft
4	1	72.44.0019	Front Gearbox Cover With Hole
5	1	74.41.0034	Gasket 0.1
5	1	74.41.0035	Gasket 0.3
6	1	72.46.0010	Bevel Gear Z29
7	1	74.41.0038	Gasket 0.3
7	1	74.41.0039	Gasket 0.5
8	1	76.87.0047	Spacer 120
8	1	76.87.0048	Spacer 140
8	1	76.87.0049	Spacer 165
8	1	76.87.0083	Spacer 185
8	1	76.87.0050	Spacer 205
10	1	71.12.0041	Transmission Shaft 120
10	1	71.12.0042	Transmission Shaft 140
10	1	71.12.0043	Transmission Shaft 165
10	1	71.12.0074	Transmission Shaft 185
10	1	71.12.0044	Transmission Shaft 205
11	1	30208	Bearing
12	1	31310	Bearing
13	1	30210	Bearing
14	1	32212	Bearing
15	1	35X47X7	Seal 35 x 47 x 7
16	1	40X52X7	Seal 40 x 52 x 7
17	1	60X80X10	Seal 60 x 80 x 10
18	2	80.P.09.001	Rubber Shield PTO
19	2	80.F.90.553	Outlet Plug 1/2"
20	1	80.Z.55.014	Self Locking Nut 45 x 1.5
21	1	80.F.90.116	Breather Plug 1/2"
22	3	80.S.38.232	Aluminum Washer 1/2" 21.5 x 27 x 1.5
23	12	80.S.35.110	Spring Washer 10.2 x 18.1 x 2.5
24	22	80.Z.03.137	Bolt M10 x 30 UNI5739
30	1	72.41.0019	Complete Gearbox w/Rear PTO
31	1	72.41.0041	Complete Gearbox w/120 Ext.
31	1	72.41.0042	Complete Gearbox w/140 Ext.
31	1	72.41.0043	Complete Gearbox w/165 Ext.
31	1	72.41.0045	Complete Gearbox w/185 Ext.
31	1	72.41.0044	Complete Gearbox w/205 Ext.

OPTIONAL TAILBOARD & SKID SHOES

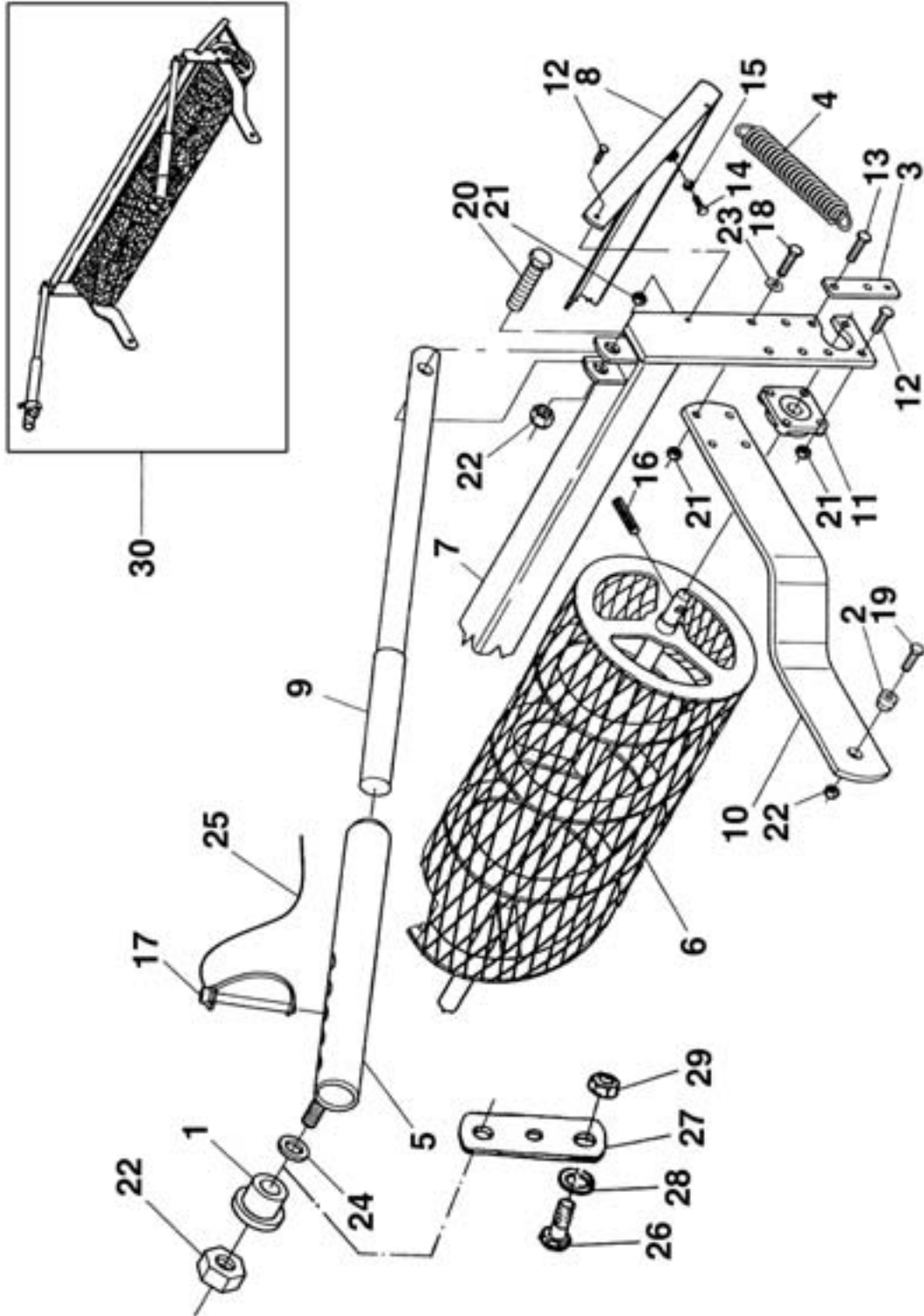
(S/N 03335 - -----)



<u>REF#</u>	<u>QTY.</u>	<u>PART NO.</u>	<u>DESCRIPTION</u>
1	1	75.85.0007	Spring
2	1	78.48.0113	Support Tube
3	1	80.Z.62.252	Roll Pin D.6 x 40
4	1	71.42.0014	Rod, Tailboard
5	1	75.85.0006	Spring
6	1	80.Z.75.506	Hair Pin
7	1	80.P.05.001	Tie Wire
8	8	80.Z.11.015	Nut M12
9	5	80.Z.03.160	Bolt M12 x 35
10	1	78.44.0059	Bracket
11	1	72.30.0021	Tailboard SB120
11	1	72.30.0022	Tailboard SB140
11	1	72.30.0023	Tailboard SB165
11	1	72.30.0024	Tailboard SB185
11	1	72.30.0025	Tailboard SB205
12	2	80.Z.11.012	Nut M10
13	2	76.65.0024	Support Pin
14	2	80.Z.03.136	Bolt M10 x 25
15	8	80.Z.30.012	Washer 13 x 24 x 2.5
16	1	78.16.0016	Skid R.H.
17	1	78.16.0017	Skid L.H.
18	2	80.Z.03.161	Bolt M12 x 40

OPTIONAL ROLLER ASSEMBLY

(S/N ----- 03434)



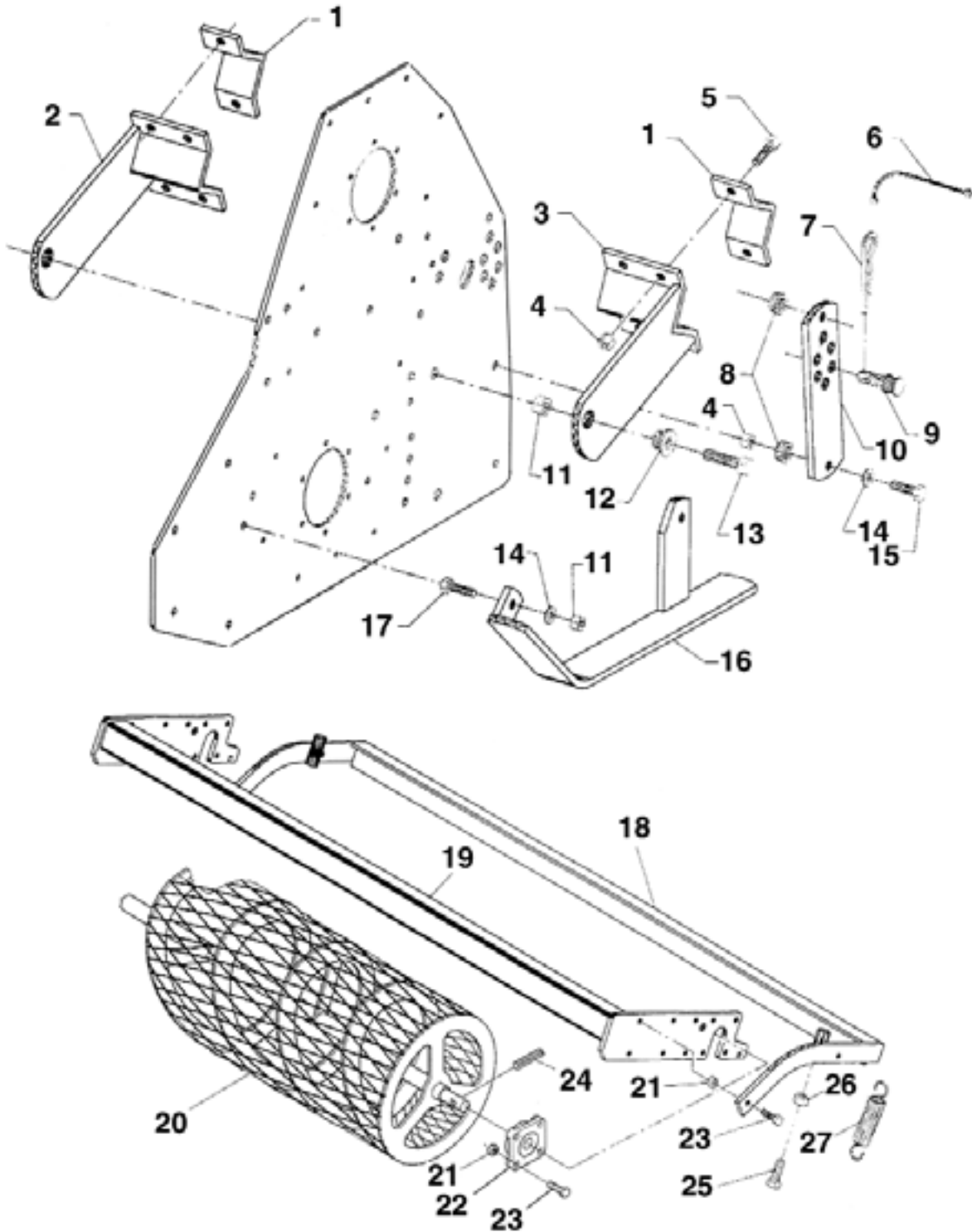
OPTIONAL ROLLER ASSEMBLY

(S/N ----- - 03434)

<u>REF#</u>	<u>QTY.</u>	<u>PART NO.</u>	<u>DESCRIPTION</u>
1	2	71.97.0011	Bushing 16 x 36 - 14
2	2	71.97.0012	Bushing 16 x 36 - 18
3	2	75.05.0069	Plate
4	2	75.85.0020	Spring
5	2	77.60.0002	Adjustment Tube
6	1	77.91.0025	Mesh Roller SB120
6	1	77.91.0026	Mesh Roller SB140
6	1	77.91.0027	Mesh Roller SB165
6	1	77.91.0028	Mesh Roller SB185
6	1	77.91.0029	Mesh Roller SB205
7	1	78.60.0048	Roller Frame SB120
7	1	78.60.0049	Roller Frame SB140
7	1	78.60.0050	Roller Frame SB165
7	1	78.60.0051	Roller Frame SB185
7	1	78.60.0052	Roller Frame SB205
8	1	78.60.0067	Mud Scraper SB120
8	1	78.60.0068	Mud Scraper SB140
8	1	78.60.0069	Mud Scraper SB165
8	1	78.60.0070	Mud Scraper SB185
8	1	78.60.0071	Mud Scraper SB205
9	2	78.72.0004	Adjustment Rod
10	2	78.90.0066	Side Arm
11	2	UCF205	Support Bearing
12	6	80.R.01.065	Bolt M10 x 35 UNI5737
13	4	80.R.01.067	Bolt M10 x 45 UNI5737
14	2	80.R.03.190	Bolt M14 x 70 UNI5739
15	2	80.S.01.011	Nut M14 UNI5587
16	2	80.S.62.283	Roll Pin 8 x 30
17	2	80.S.77.021	Pin 10 x 70
18	8	80.Z.03.138	Bolt M10 x 35 UNI5739
19	2	80.Z.04.150	Bolt M16 x 1.5 x 50 UNI5740
20	2	80.Z.04.156	Bolt M16 x 1.5 x 80 UNI5740
21	18	80.Z.11.012	Locknut M10
22	6	80.Z.11.018	Locknut M16 x 1.5
23	8	80.Z.30.010	Flat Washer 10 x 21 - 2
24	4	80.Z.30.016	Flat Washer 17 x 30 - 3
25	2	80.P.05.001	Strap
26	4	80.Z.03.159	Bolt M12 x 30 UNI5739
27	2	76.71.0054	Support Bracket
28	4	80.Z.30.012	Washer 13 x 24 - 2.5
29	4	80.Z.11.015	Nut M12
30	1	61.47.0001	Mesh Roller Assy SB120
30	1	61.47.0002	Mesh Roller Assy SB140
30	1	61.47.0003	Mesh Roller Assy SB165
30	1	61.47.0004	Mesh Roller Assy SB185
30	1	61.47.0005	Mesh Roller Assy SB205

OPTIONAL ROLLER ASSEMBLY

(S/N 03435 - -----)



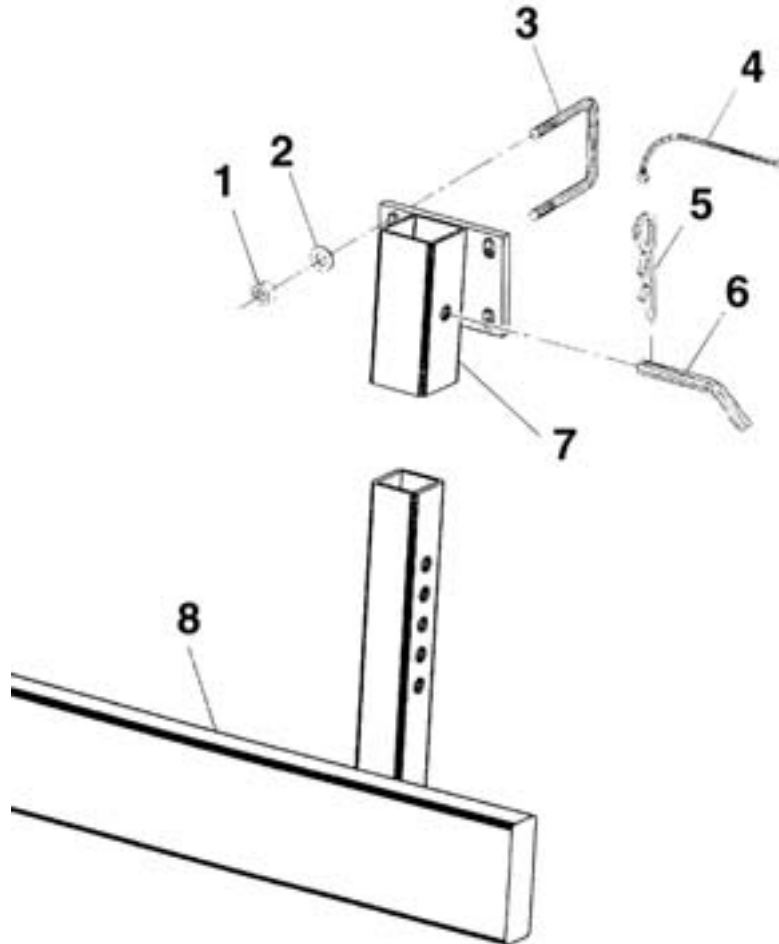
OPTIONAL ROLLER ASSEMBLY

(S/N 03435 - -----)

<u>REF#</u>	<u>QTY.</u>	<u>PART NO.</u>	<u>DESCRIPTION</u>
1	4	78.44.0001	1/2 Clamp
2	1	78.90.0075	Bracket, Support R.H.
3	1	78.90.0076	Bracket, Support L.H.
4	14	80.Z.11.015	Nut M12
5	8	80.Z.03.161	Bolt M12 x 40
6	2	80.P.05.001	Tie Wire
7	2	80.Z.75.505	Hair Pin
8	4	72.80.0046	Bushing
9	2	76.65.0057	Pin
10	2	76.71.0149	Bracket, Adjustment
11	2	80.Z.11.018	Nut M16
12	2	71.97.0012	Spacer 16.5 x 36 x 18
13	2	80.Z.00.044	Bolt M16 x 1.5 x 45
14	6	80.Z.30.012	Washer 13 x 24 x 2.5
15	4	80.Z.01.087	Bolt m12 x 45
16	1	78.16.0021	Skid L.H.
17	2	80.Z.03.160	Bolt M12 x 35
18	1	78.60.0179	Scraper SB120
18	1	78.60.0181	Scraper SB140
18	1	78.60.0182	Scraper SB165
18	1	78.60.0183	Scraper SB185
18	1	78.60.0184	Scraper SB205
19	1	78.60.0171	Bracket Support SB120
19	1	78.60.0173	Bracket Support SB140
19	1	78.60.0174	Bracket Support SB165
19	1	78.60.0175	Bracket Support SB185
19	1	78.60.0176	Bracket Support SB205
20	1	77.91.0042	Roller SB120
20	1	77.91.0026	Roller SB140
20	1	77.91.0027	Roller SB165
20	1	77.91.0028	Roller SB185
20	1	77.91.0029	Roller SB205
21	10	80.Z.11.012	Nut
22	2	UCF205	Bearing
23	10	80.R.01.065	Bolt M10 x 35
24	2	80.S.62.283	Roll Pin 8 x 30
25	2	80.R.03.190	Bolt M14 x 70
26	2	80.Z.08.011	Nut M14
27	2	75.85.0020	Spring

OPTIONAL ROLLER TAILBOARD

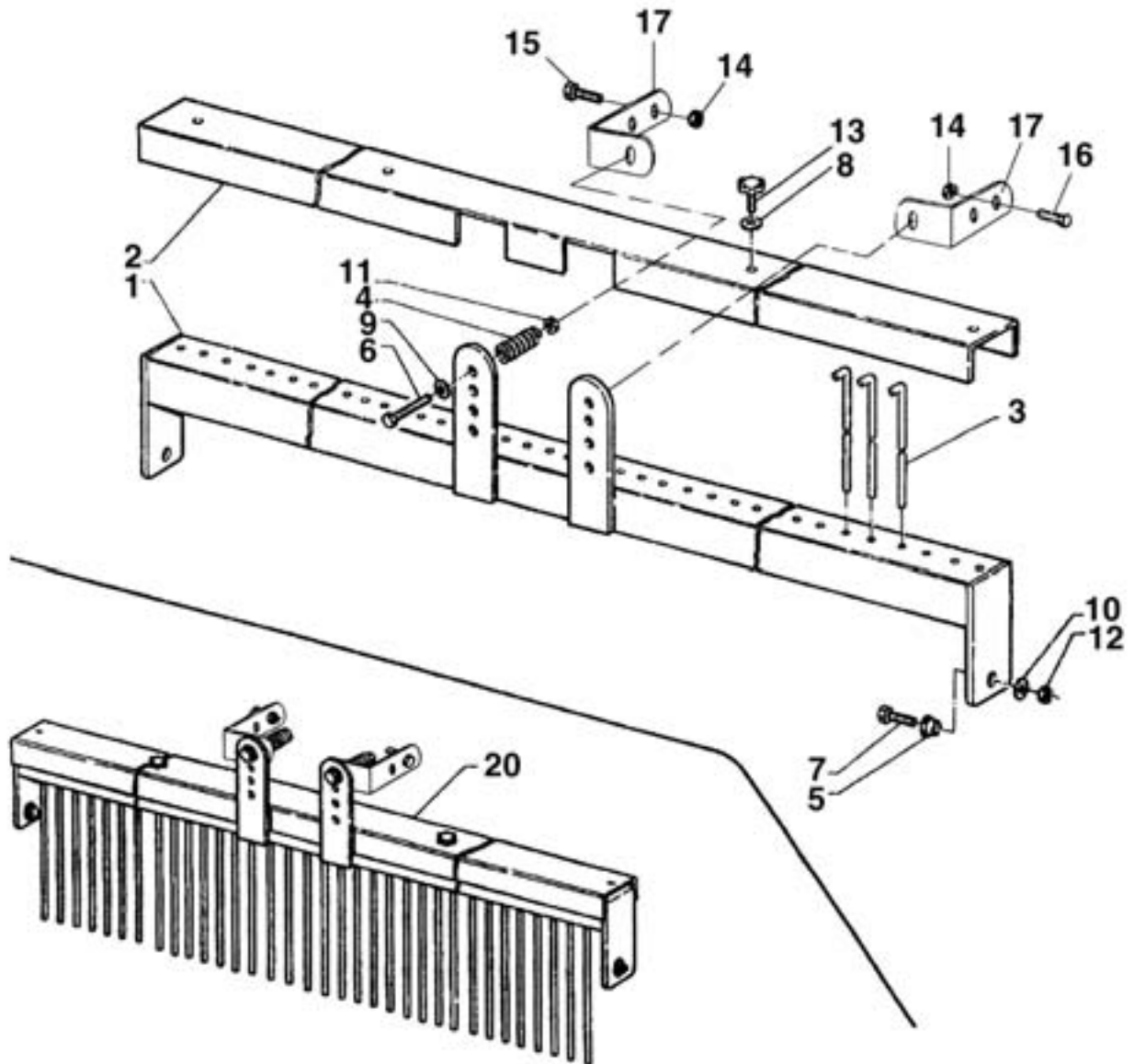
(S/N 03435 - -----)



REF#	QTY.	PART NO.	DESCRIPTION
1	8	80.Z.11.012	Nut M/C
2	8	80.Z.30.010	Washer
3	4	72.21.0003	Channel Bolt
4	2	80.P.05.001	Tie Wire
5	2	80.Z.75.505	Hair Pin
6	2	76.65.0058	Pin
7	2	78.48.0050	Bracket
8	1	71.52.0043	Tailboard SB120
8	1	71.52.0044	Tailboard SB140
8	1	71.52.0045	Tailboard SB165
8	1	71.52.0046	Tailboard SB185
8	1	71.52.0047	Tailboard SB205

OPTIONAL COMB ASSEMBLY

(S/N ----- - 03434)



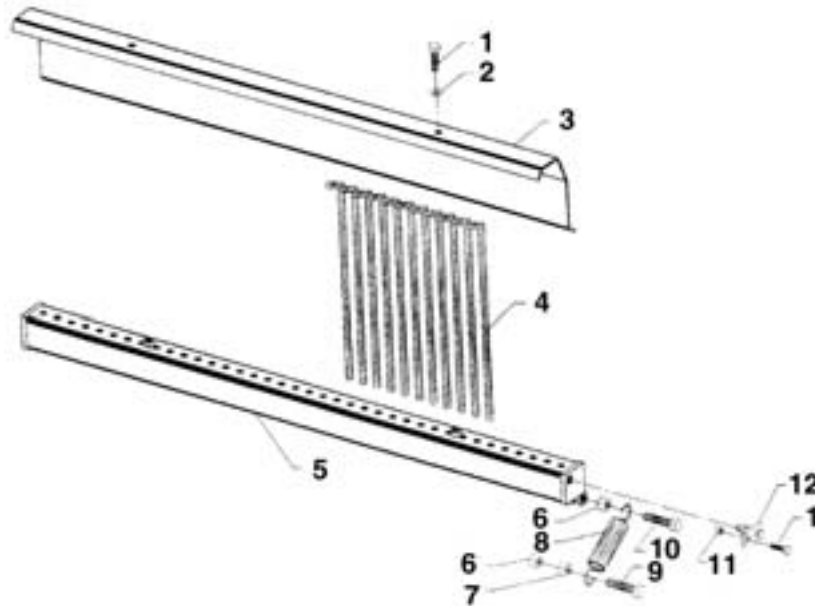
OPTIONAL COMB ASSEMBLY

(S/N ----- - 03434)

<u>REF#</u>	<u>QTY.</u>	<u>PART NO.</u>	<u>DESCRIPTION</u>
1	1	78.60.0036	Comb Frame SB120
1	1	78.60.0037	Comb Frame SB140
1	1	78.60.0038	Comb Frame SB165
1	1	78.60.0039	Comb Frame SB185
1	1	78.60.0040	Comb Frame SB205
2	1	72.44.0038	Comb Cover SB120
2	1	72.44.0039	Comb Cover SB140
2	1	72.44.0040	Comb Cover SB165
2	1	72.44.0041	Comb Cover SB185
2	1	72.44.0042	Comb Cover SB205
3	As Req'd	78.75.0001	Comb Rod, 12, 38, 45, 53, 60, 69
4	2	75.85.0007	Shock Absorber Tailboard Spring
5	2	71.97.0012	Bushing D16.5 x 36 - 18
6	2	80.Z.01.118	Bolt M14 x 110 UNI5737
7	2	80.Z.04.149	Bolt M16 x 4.5 x 15 UNI5740
8	2	80.Z.30.010	Flat Washer 10 x 21 - 2
9	2	80.Z.30.014	Flat Washer 15 x 28 - 2.5
10	2	80.Z.30.016	Flat Washer 17 x 30 - 3
11	2	80.Z.11.017	Nut M14
12	2	80.Z.11.018	Nut M16 x 1.5
13	2	80.P.28.061	Knob M10 x 35
14	4	80.Z.11.015	Nut M12
15	2	80.Z.03.160	Bolt M12 x 35
16	2	80.Z.03.161	Bolt M12 x 40
17	2	78.44.0065	Comb Support
20	1	72.42.0002	Complete Comb SB120
20	1	72.42.0003	Complete Comb SB140
20	1	72.42.0004	Complete Comb SB165
20	1	72.42.0005	Complete Comb SB185
20	1	72.42.0006	Complete Comb SB205

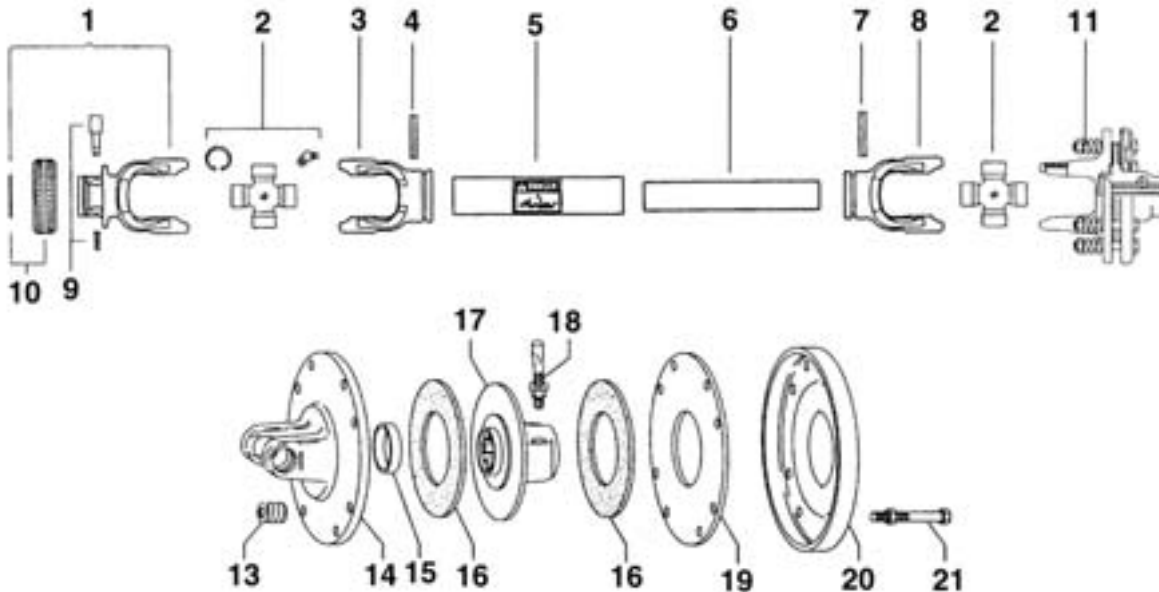
OPTIONAL COMB ASSEMBLY

(S/N 03435 - -----)



<u>REF#</u>	<u>QTY.</u>	<u>PART NO.</u>	<u>DESCRIPTION</u>
1	4	80.Z.03.136	Bolt M10 x 25
2	2	80.Z.31.110	Washer 11 x 40 x 2.5
3	1	72.44.0081	Hood SB120
3	1	72.44.0082	Hood SB140
3	1	72.44.0083	Hood SB165
3	1	72.44.0084	Hood SB185
3	1	72.44.0085	Hood SB205
4	38	78.75.0001	Tine SB120
4	46	78.75.0001	Tine SB140
4	54	78.75.0001	Tine SB165
4	60	78.75.0001	Tine SB185
4	68	78.75.0001	Tine SB205
5	1	78.60.0186	Holder SB120
5	1	78.60.0187	Holder SB140
5	1	78.60.0188	Holder SB165
5	1	78.60.0189	Holder SB185
5	1	78.60.0190	Holder SB205
6	4	80.Z.11.017	Nut M14
7	2	80.Z.08.011	Nut M14
8	2	75.85.0020	Spring
9	2	80.Z.03.186	Bolt M14 x 50
10	2	80.Z.03.188	Bolt M14 x 60
11	2	80.Z.11.012	Nut M10
12	2	76.65.0024	Support Pin

PTO DRIVELINE ASSY 8106110FXT071



<u>REF#</u>	<u>QTY.</u>	<u>PART NO.</u>	<u>DESCRIPTION</u>
1	1	572060351	Yoke 1-3/8" 6 Spline
2	2	41206	Cross Journal Kit #6
3	1	204066851	Yoke, Outer Tube
4	1	341042000	Roll Pin O.T.
5	1	225691100	Tube, Outer Drive
6	1	225111100	Tube, Inner Drive
7	1	341043000	Roll Pin I.T.
8	1	204066852	Yoke, Inner Tube
9	1	403000001	Pin Kit
10	1	240003051	RS Collar Kit
11	1	639248015	Slip Clutch Assy. FF-2
12	1	5N06086N1	Complete Shield (not shown)
13	8	351013370	Spring 7mm
14	1	253062302	Flanged Yoke
15	1	258005320	Bushing
16	2	247000061	Lining 160mm
17	1	515210311	Hub 1-3/8 6 Spline
18	1	408000060	Threaded Bolt Assy.
19	1	248230002	Pressure Plate
20	1	248230006	Cover
21	8	432000006	Bolt & Nut

LIMITED WARRANTY



GEARMORE, INC., warrants each new Gearmore product to be free from defects in material and workmanship for a period of twelve (12) months from date of purchase to the original purchaser. This warranty shall not apply to implements or parts that have been subject to misuse, negligence, accident, or that have been altered in any way.

Our obligation shall be limited to repairing or replacement of any part, provided that such part is returned within thirty (30) days from date of failure to Gearmore through the dealer from whom the purchase was made, transportation charges prepaid.

This warranty shall not be interpreted to render us liable for injury or damages of any kind or nature, direct, consequential or contingent, to person or property. This warranty does not extend to loss of crops, loss because of delay in harvesting or any other expenses, for any other reasons.

Gearmore in no way warrants engines, tires, or other trade accessories, since these items are warranted separately by these respective manufacturers.

Gearmore reserves the right to make improvements in design or changes in specification at any time, without incurring any obligations to owners or units previously sold.

GEARMORE, INC.
13477 Benson Ave.
Chino, CA 91710

Always refer to and heed machine operating warning decals on machine.

The serial number of this product is stored in our computer database, thus submitting a warranty registration card is not required.