



VENTURI AIR SPRAYERS

**Parts Manual For
Model P55S1-600-G
& P55S1-600E-G
3-Pt. Mount**

June 2002

TABLE OF CONTENTS

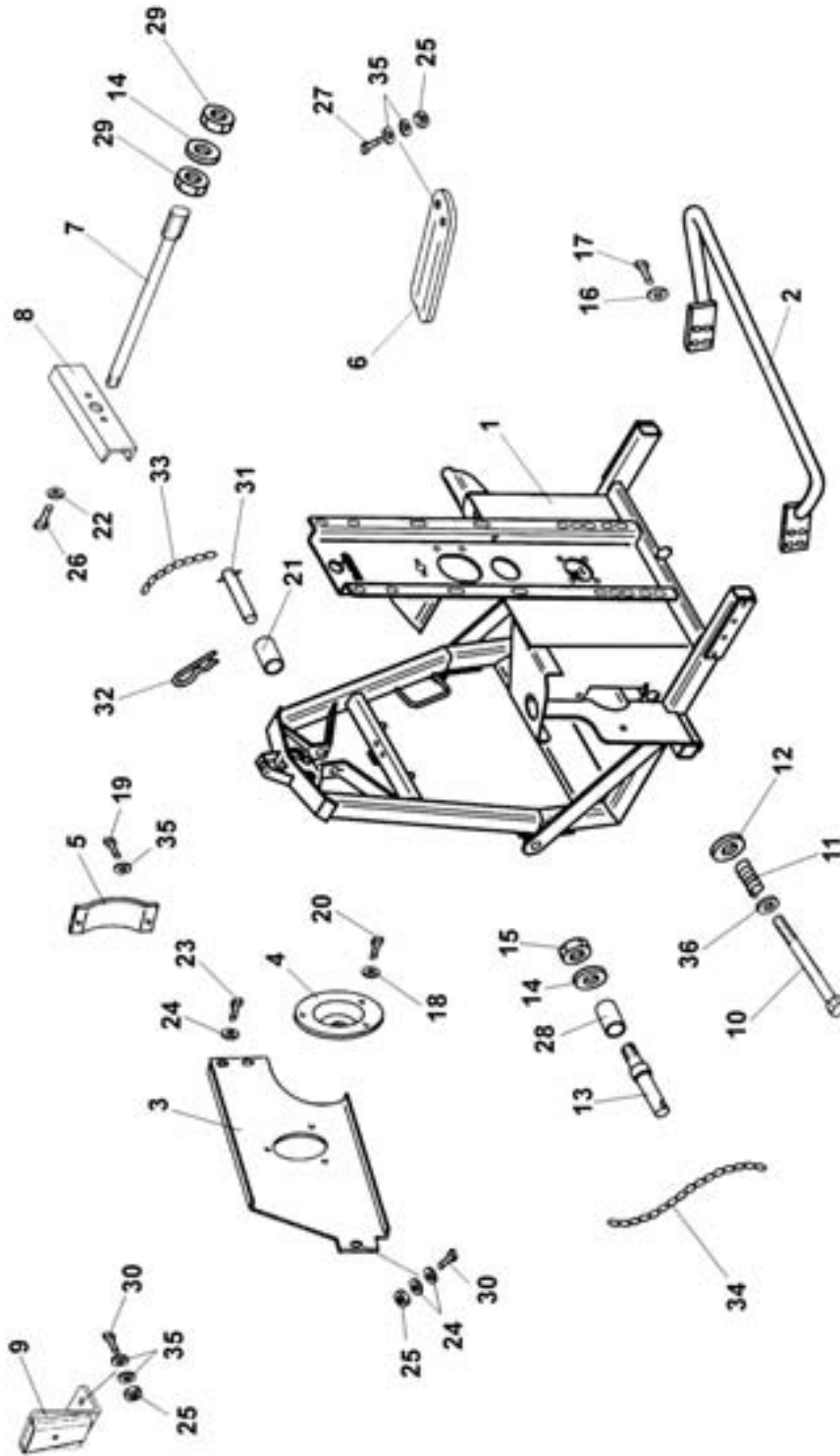
Main Frame	1-2
Agitation & Tank	3-5
Fan Assembly	6
Fan support, Belt Stretcher & Complete Fan Support	7-11
Clutch & Pulley Assembly	12-13
Liquid Flow Path	14-16
Inline Filter Assembly	17
Pump & Tension Pulley Assembly	18-19
Fan Support	20
Dial - A - Rate	21
Solenoid Control Valve	22-23
Optional Control Box	24
PTO Driveshaft	25
Limited Warranty	26

Date of Purchase:_____

Model Number:_____

Serial Number:_____

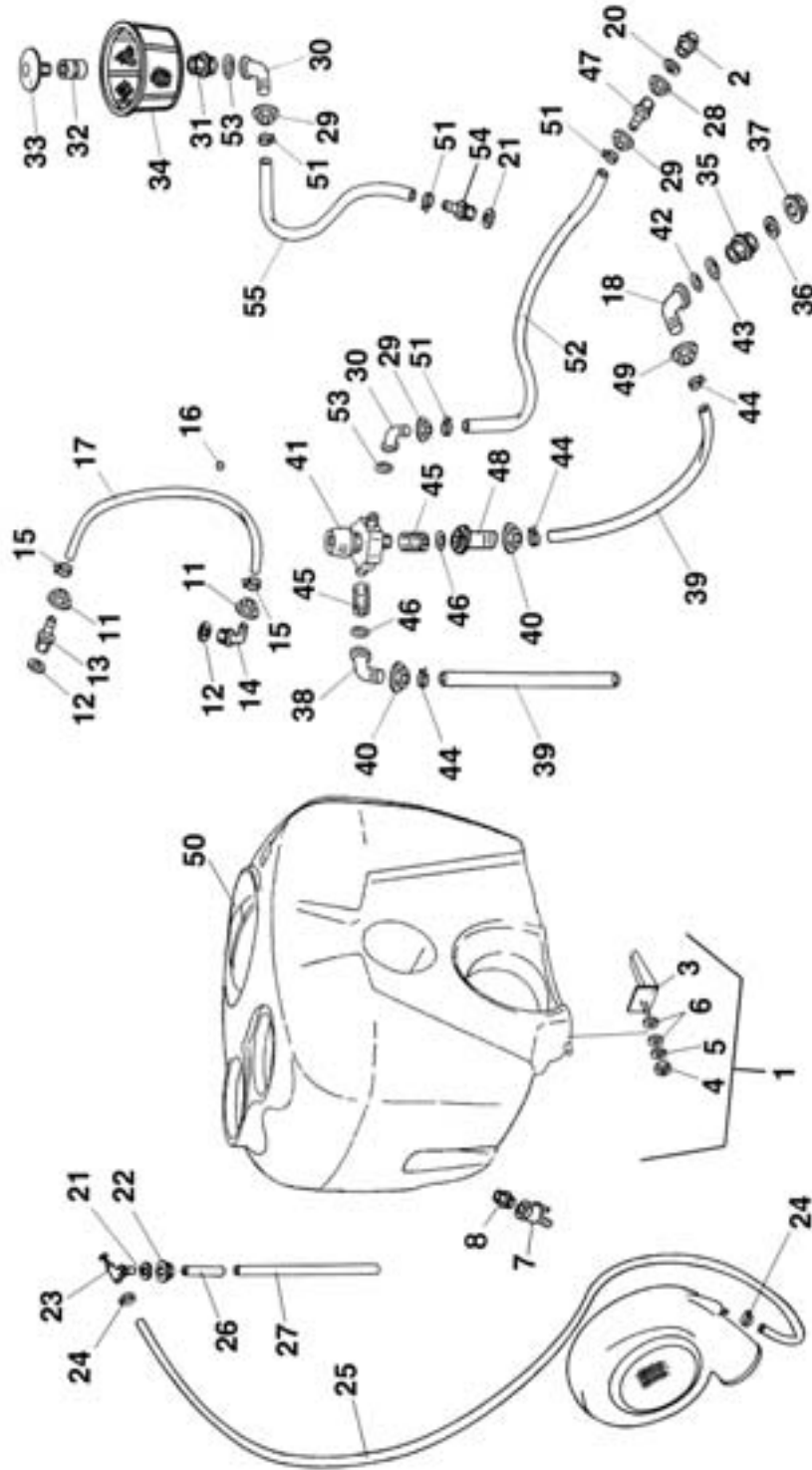
FRAME ASSEMBLY



FRAME ASSEMBLY

<u>REF#</u>	<u>QTY.</u>	<u>PART NO.</u>	<u>DESCRIPTION</u>
1	1	50.104.000	Main Frame
2	1	40.000.000	Rear Bumper
3	1	50.105.000	Plate, Front
4	1	20.434.000	Cover
5	1	20.743.000	Cover Plate
6	1	20.744.000	Bracket
7	1	20.754.101	Rod, Tank Retaining
8	1	20.737.101	Support Plate
9	1	20.766.000	Support Plate
10	1	20.738.000	Bolt, Belt Stretcher
11	1	02.964.000	Spring
12	1	02.140.003	Washer
13	2	40.201.000	Lift Pin
14	3	RD.022.000	Washer D.22
15	2	DI.22.5593F	Nut M22
16	4	RP.010.000	Washer D.10
17	4	TE.010.025T	Bolt M10 x 25
18	3	RP.006.018	Washer D.18
19	2	TE.008.016T	Bolt M8 x 16
20	3	TE.006.016T	Bolt M6 x 16
21	1	20.778.000	Bushing
22	2	RD.008.000	Washer D.8
23	2	TE.008.012T	Bolt M8 x 12
24	4	RP.008.024	Washer D.8 x 24
25	5	DO.08.5588G	Nut M8
26	2	TE.008.035T	Bolt M8 x 35
27	2	TE.010.070	Bolt M10 x 70
28	2	20.043.000	Bushing
29	2	DO.22.5588F	Nut M22
30	3	TE.008.025T	Bolt M8 x25
31	1	04.076.000	Pin
32	1	00.100.004	Hair Pin
33	2	02.278.001	Chain D2.2 x 16"
34	2	02.278.001	Chain D2.2 x 24"
35	10	RP.008.000	Washer
36	1	RP.012.000	Washer D.12

AGITATION & TANK



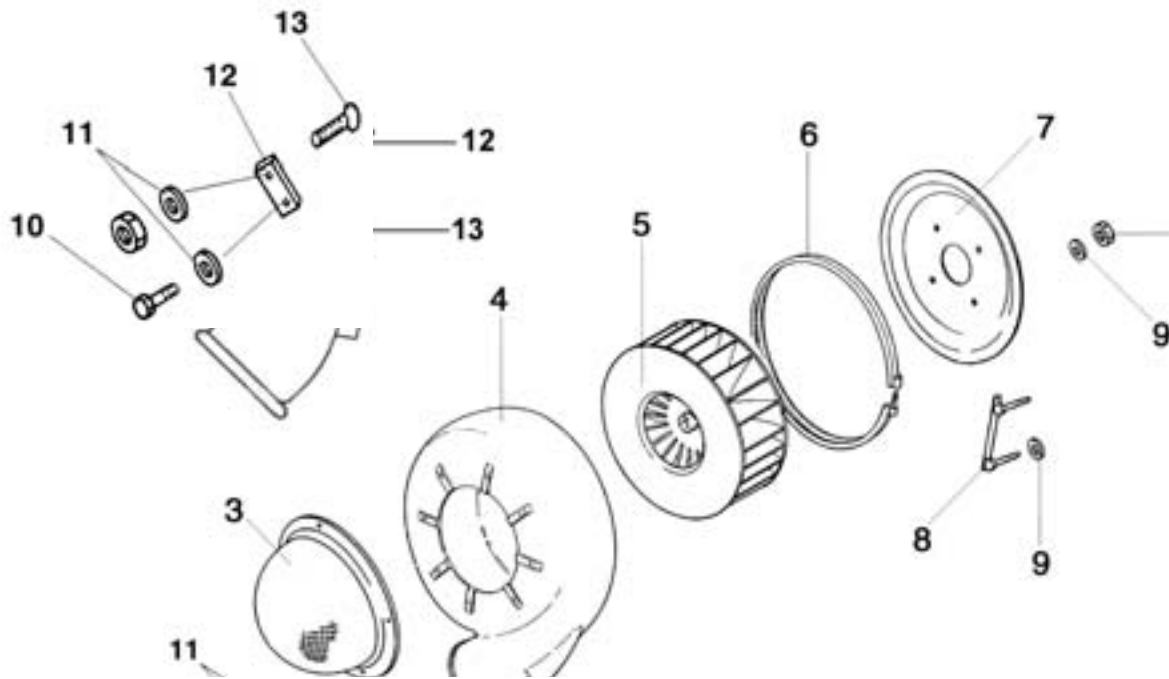
AGITATION & TANK

<u>REF#</u>	<u>QTY.</u>	<u>PART NO.</u>	<u>DESCRIPTION</u>
1	1	40.220.002	Tank 150 Gal. s/n 010114 ---
2	1	00.055.034.L	Nipple
3	1	20.749.000	Support Plate
4	1	DA.010.0AG	Nut M10 x 1.5
5	1	RP.010.030	Washer D.10 x 30
6	2	20.436.000	Rubber Washer D.6
7	1	02.497.000	Ball Valve
8	1	02.380.000	Nipple
9	1	02.298.000	Basket, Strainer
10	2	02.476.000	Lid D.255
11	2	02.458.000	Ring Nut
12	2	OR2022353	O-Ring 20.22 x 3.53
13	1	02.482.000	Hosetail
14	1	02.457.000	Hosetail 90°
15	2	F0.008.016I	Clamp D.8/16
16	1	02.478.000	Floating Ball D.9.5
17	1	02.378.000	Gauge Hose
18	1	02.339.000	Hose Barb
19	1	02.066.000	Gasket 33 x 45 x 3
20	1	02.066.000	Gasket D.33 x 45
21	2	02.032.000	Gasket 26 x 40 x 2
22	1	00.541.000	Back Nut
23	1	02.135.000	Piston
24	4	F0.016.027I	Clamp D.16/27
25	As Req'd	02.372.000	Hose D.19 Per Foot
26	As Req'd	02.212.000	Hose D.19 Per Foot
27	As Req'd	02.420.000	Hose D.20 Per Foot
28	1	00.542.000	Nut
29	3	00.055.242	Nut
30	2	00.055.037	Hosetail
31	1	00.055.034	Nipple
32	1	00.373.000	Sleeve
33	1	00.131.010	Shower Head
34	1	00.646.010	Basket, Strainer
35	1	00.345.000	Nipple
36	1	02.033.000	Gasket 42 x 55 x 3
37	1	00.543.000	Nut
38	1	00.058.004	Hosetail D.30
39	As Req'd	02.215.000	Hose D.30 Per Foot
40	1	00.058.006	Cap Nut

AGITATION & TANK

<u>REF#</u>	<u>QTY.</u>	<u>PART NO.</u>	<u>DESCRIPTION</u>
41	1	02.447.300	Regulator Valve
42	1	OR.003.106	O-Ring 26.64 x 2.62
43	1	OR.003.112	O-Ring 28.24 x 2.62
44	3	F0.025.040I	Clamp D.25/40
45	2	02.374.000	Reducer
46	2	OR.000.508	O-Ring 30 x 3
47	1	00.055.021	Nipple
48	1	00.058.028	Nipple
49	1	00.493.000	Nut
50	1	20.787.000	Main Lid Assembly
51	4	F0.023.035I	Clamp
52	1	20.770.053	Hose D.25 L=530
53	2	OR2381262	O-Ring 23.81 x 2.62
54	1	20.793.000	Hose Barb
55	1	20.798.075	Hose D.25 L=750

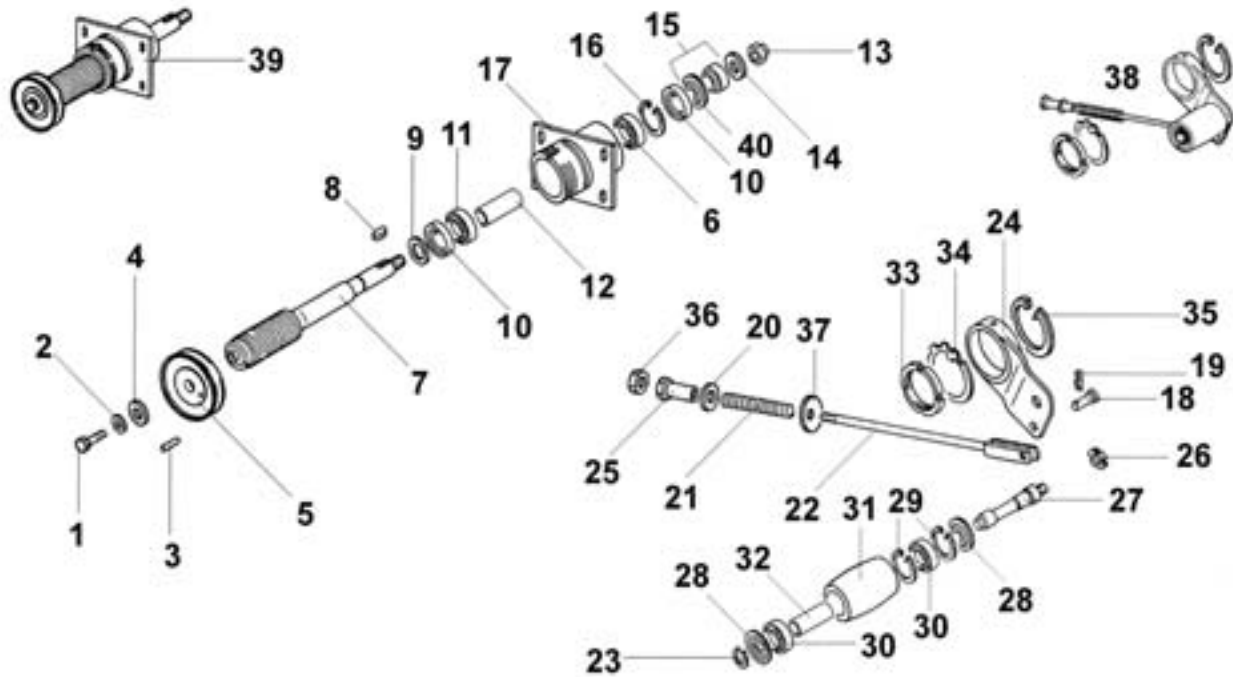
FAN ASSEMBLY



<u>REF#</u>	<u>QTY.</u>	<u>PART NO.</u>	<u>DESCRIPTION</u>
1	4	RP.010.040	Washer D.10 x 40
2	4	D0.10.5588G	Nut M10
3	1	05.654.100	Protection Cover
4	1	50.011.000	Fan Casing
5	1	50.012.000	Fan
6	1	50.004.000	Clamp D.610
7	1	50.002.000	Cover s/n 001042 - 011142
7	1	50.172.000	Cover s/n 020356 -
8	2	20.088.000	Bracket For Back Cover
9	8	RP.010.030	Washer D.10 x 30
10	4	TE.006.016T	Bolt M6 x 16
11	4	RP.006.000	Washer D.6
12	4	05.654.101	Bracket
13	4	TS.006.016I	C.S. Bolt M6 x 16

FAN SUPPORT & BELT TENSIONER

For S/N 001042 - 011142



<u>REF#</u>	<u>QTY.</u>	<u>PART NO.</u>	<u>DESCRIPTION</u>
1	1	TE.010.025FT	Bolt 10 x 25
2	1	RP.010.028	Washer D.10 x 28
3	1	SE.006.020	Spring Pin 6 x 20
4	1	RP.010.040	Washer D.10 x 40
5	1	05.897.000	Pulley D.101
6	1	21307	Bearing
7	1	05.649.075	Shaft P55S
8	1	L.10.08.40	Key 10 x 8 x 40
9	1	05.716.000	Spacer
10	2	AL.STO.45.85	Seal
11	1	22208	Bearing
12	1	05.698.000	Spacer Tube

FAN SUPPORT

For S/N 001042 - 011142

<u>REF#</u>	<u>QTY.</u>	<u>PART NO.</u>	<u>DESCRIPTION</u>
13	1	DA.022.0BF	Nut M22 x 1.5
14	1	RP.022.000	Washer D.22
15	1	05.714.000	Bushing
16	1	IO.080.000	Circlip I80
17	1	05.715.010	Housing

BELT STRETCHER

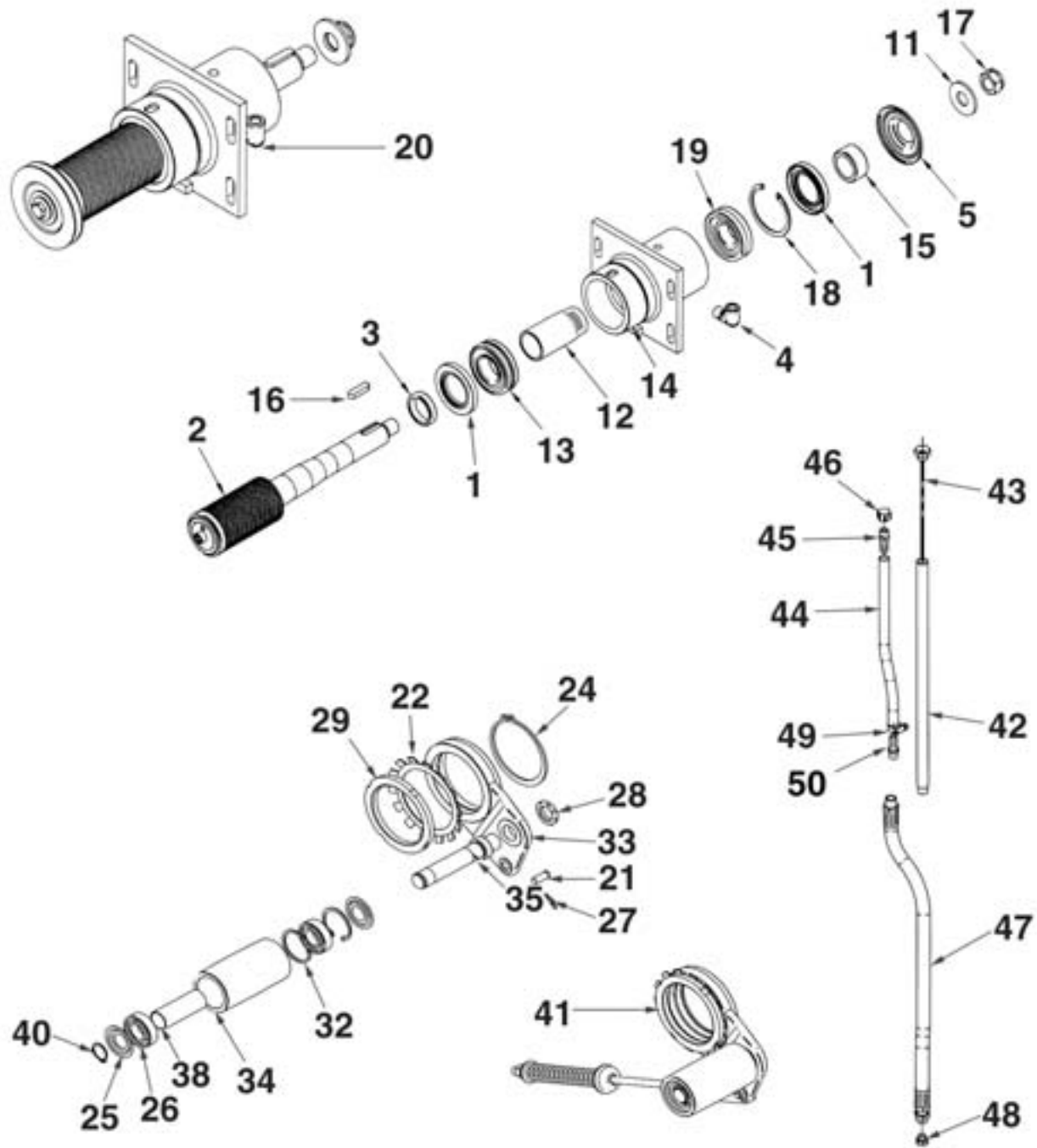
18	1	04.593.000	Pin
19	1	00.100.002	Clip
20	1	RP.019.000	Washer D.19
21	1	05.647.000	Spring
22	1	05.726.000	Rod, Adjustment
23	1	EO.025.000	Circlip E25
24	1	05.696.000	Belt Stretcher Housing
25	1	04.583.000	Screw Threaded Spacer
26	1	KM.005.000	Nut
27	1	05.697.000	Belt Stretcher Pin
28	2	04.585.000	Cover Seal
29	2	IO.052.000	Circlip I52
30	2	6205-2RS	Bearing
31	1	05.630.000	Roller
32	1	05.631.000	Spacer
33	1	05.704.000	Nut
34	1	MB.020.000	Washer
35	1	EO.100.000	Circlip E100
36	1	D0.12.5588G	Nut
37	1	20.260.000	Special Washer
38	1	05.707.000	Belt Stretcher Assy.

COMPLETE FAN SUPPORT

39	1	05.715.114C	Fan Support Assy.
----	---	-------------	-------------------

FAN SUPPORT & BELT TENSIONER

For S/N 020256 ---



FAN SUPPORT & BELT TENSIONER

For S/N 020256 ---

<u>REF#</u>	<u>QTY.</u>	<u>PART NO.</u>	<u>DESCRIPTION</u>
1	2	50X80X10	Oil Seal
2	1	50.119.070	Shaft
3	1	50.114.000	Bushing
4	1	20.789.000	90° Elbow
5	1	50.115.000	Cover
6	1	05.897.000	Pulley D.995
7	1	SE.006.020	Roll Pin
8	1	RP.010.040	Washer D.10 x 40
9	1	RP.010.028	Washer D.10 x 28
10	1	TE.010.025FT	Bolt M10 x 25
11	1	20.820.000	Special Washer D.53 x D.22.5
12	1	50.112.000	Spacer
13	1	22208	Bearing
14	1	50.110.000	Housing
15	1	50.113.000	Spacer
16	1	L.10.08.40	Key 10 x 8 x 40
17	1	DA.022.0BF	Nut M22 x 1.5
18	1	I0.080.000	Circlip I80
19	1	21307	Bearing
20	1	50.156.000	Support Assembly

BELT TENSIONER

21	1	04.593.000	Pin
22	1	MB.020.000	Washer
23	1	RP.019.000	Washer D.19
24	1	E0.100.000	Circlip E100
25	2	04.585.000	Cover, Dust
26	2	6205-2RS	Bearing
27	1	00.100.002	Hair Pin
28	1	KM.005.000	Nut M5
29	1	05.704.000	Nut
30	1	20.260.000	Cup Washer
31	1	05.726.000	Rod, Adjustment
32	2	I0.052.000	Circlip I52
33	1	05.696.000	Support, Idler
34	1	05.630.000	Roller
35	1	05.697.000	Pin
36	1	05.647.000	Spring
37	1	04.583.000	Special Screw
38	1	05.631.000	Spacer
39	1	D0.12.5588G	Nut m12
40	1	E0.025.000	Circlip E25
41	1	05.707.000	Belt Tension Assembly

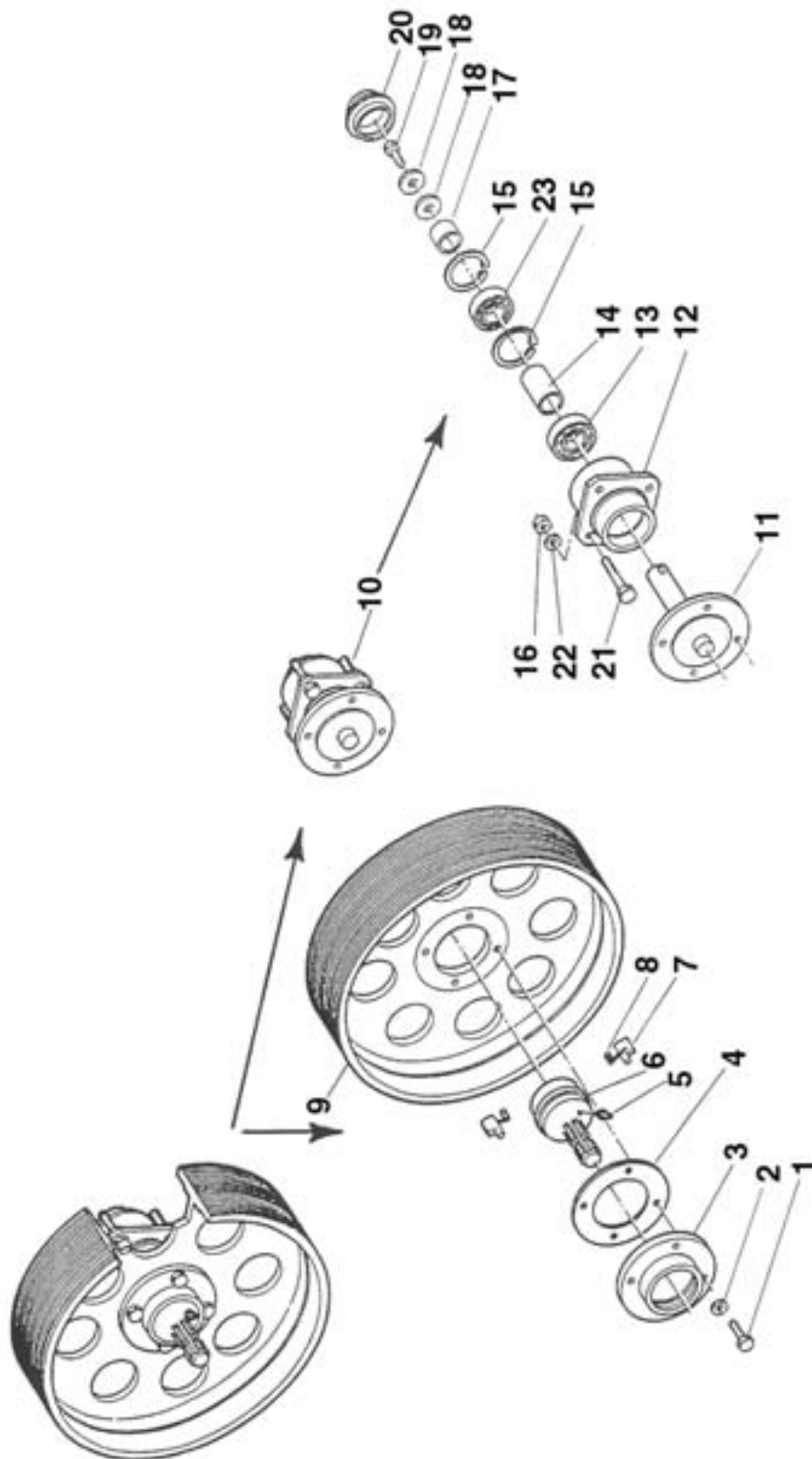
FAN SUPPORT & BELT TENSIONER

For S/N 020256 ---

OIL TUBE

<u>REF#</u>	<u>QTY.</u>	<u>PART NO.</u>	<u>DESCRIPTION</u>
42	1	50.122.000	Pipe L=450
43	1	50.116.000	Dipstick
44	1	02.213.040	Breather D.10 L=400
45	1	00.414.100	Hose D.11
46	1	02.013.000	Plug
47	1	20.790.000	Drain Pipe L=585
48	1	40.266.000	Drain Plug M12 x 1.5
49	1	F0.008.016I	Clamp
50	1	20.792.000	Nipple

CLUTCH & PULLEY ASSEMBLY



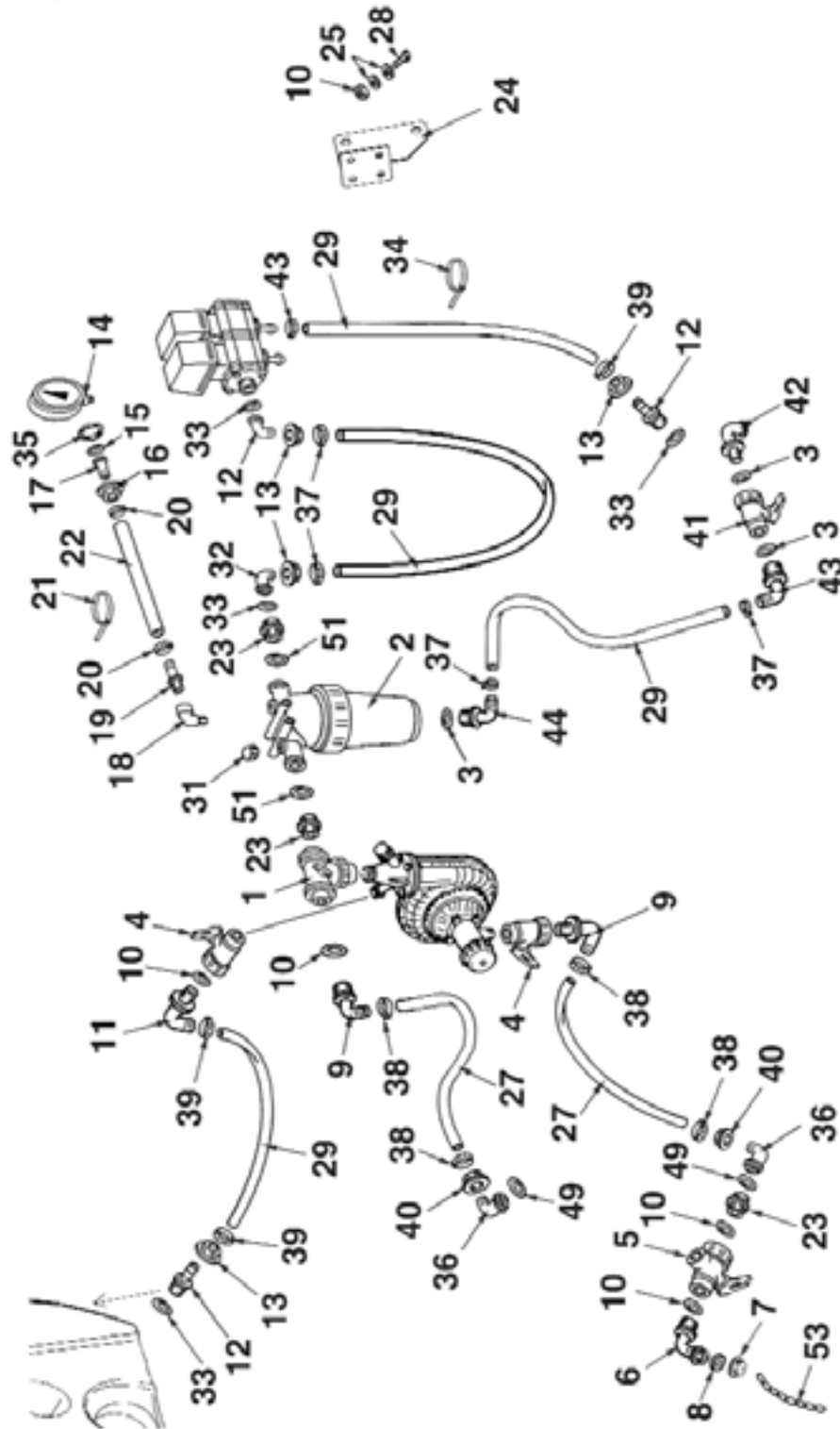
CLUTCH & PULLEY ASSEMBLY

<u>REF#</u>	<u>QTY.</u>	<u>PART NO.</u>	<u>DESCRIPTION</u>
1	4	TE.012.050F	Bolt M12 x 1.25 x 50
2	4	DO.12.5587F	Washer D.12
3	1	04.066.000	Body
4	1	04.719.000	Gasket
5	1	ID.010.001	Grease Nipple M10
6	1	03.701.000	Rotor
7	2	02.502.002	Key
8	2	02.502.001	Spring
9	1	00.480.J50	Pulley
10	1	05.632.01C	Clutch

CLUTCH ASSEMBLY

11	1	04.589.000	Shaft
12	1	05.632.000	Housing
13	1	6307-2RS	Bearing
14	1	04.565.000	Spacer
15	2	IO.072.000	Internal Circlip D.72
16	4	DO.12.5588G	Nut M12
17	1	04.590.000	Spacer
18	2	RP.012.036	Washer D.12 x 36
19	1	TE.012.025FT	Bolt M12 x 25
20	1	04.555.001	Hub Cover
21	4	TE.012.090	Bolt M12 x 90
22	4	RP.012.000	Washer D.10
23	1	6306-2RS	Bearing

LIQUID FLOW PATH WITH MANUAL CONTROL VALVES



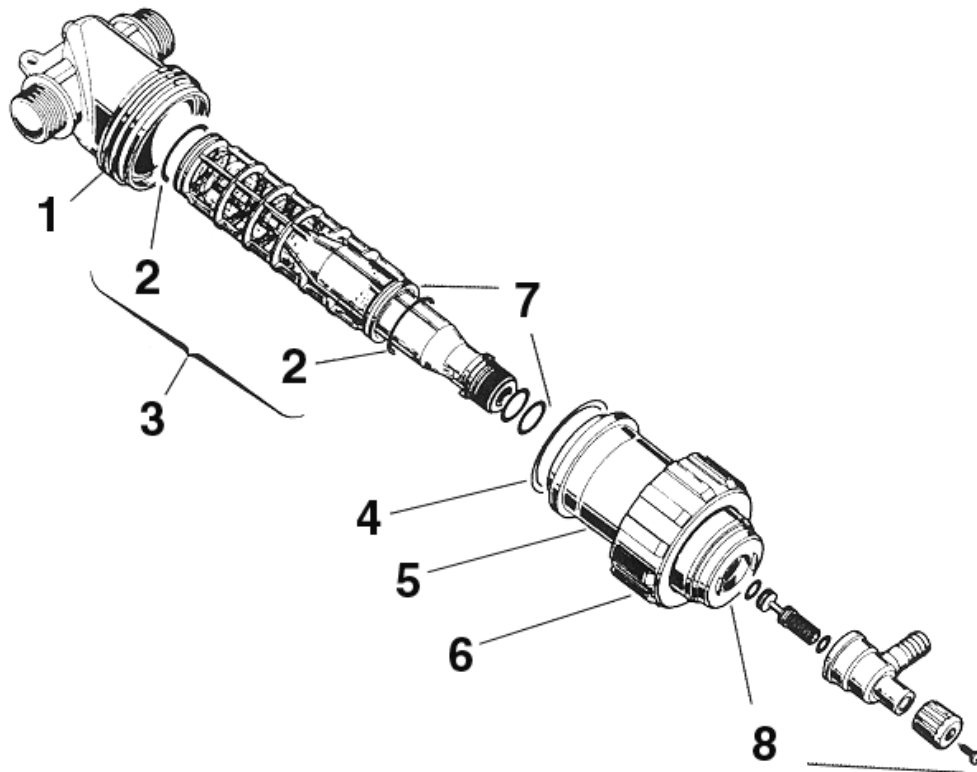
LIQUID FLOW PATH WITH MANUAL CONTROL VALVES

<u>REF#</u>	<u>QTY.</u>	<u>PART NO.</u>	<u>DESCRIPTION</u>
1	1	24.058.000	Ball Valve
2	1	02.450.020	Filter Assembly
3	3	OR2580353	O-ring 25.80 x 3.53
4	2	04.109.000	Ball Valve
5	1	24.053.000	Ball Valve
6	1	02.292.000	Hosetail 90°
7	1	TF.001.100	Cap
8	1	02.265.000	Gasket 20 x 30 x 5
9	2	00.465.000	Hosetail 90°
10	2	D0.10.5588G	Nut M10
11	1	24.068.000	Elbow 90°
12	3	00.055.021	Hose Barb
13	5	00.055.24.2	Nut
14	1	02.445.000	Pressure Gauge
15	1	20.769.000	Gasket 19.2 x 11.5 x 2.5
16	1	02.287.000	Nut
17	1	02.379.020	Hosetail
18	1	20.172.000	Steel Elbow
19	1	00.414.000	Hosetail
20	2	F0.008.016I	Clamp D.8/16
21	2	02.354.000	Tie
22	As Req'd	02.213.000	Hose D.10 Per Foot
23	3	00.045.012	Nipple
24	1	20.741.000	Bracket
25	4	RP.010.000	Washer
26	1	OR.003.112	O-ring 28.24 x 2.62
27	As Req'd	02.238.000	Hose D.30 Per Foot
28	2	TE.010.030T	Bolt M10 x 30
29	As Req'd	02.219.000	Hose D.25 Per Foot
30	As Req'd	02.212.000	Hose D.19 Per Foot
31	1	TM.014.000	Plug
32	2	00.055.037	Elbow
33	5	OR.000.132	O-ring 23.81 x 2.62
34	1	02.355.000	Tie
35	1	24.072.000	Special Nut
36	2	00.058.004	Elbow
37	8	F0.023.035I	Clamp D.25/35

LIQUID FLOW PATH WITH MANUAL CONTROL VALVES

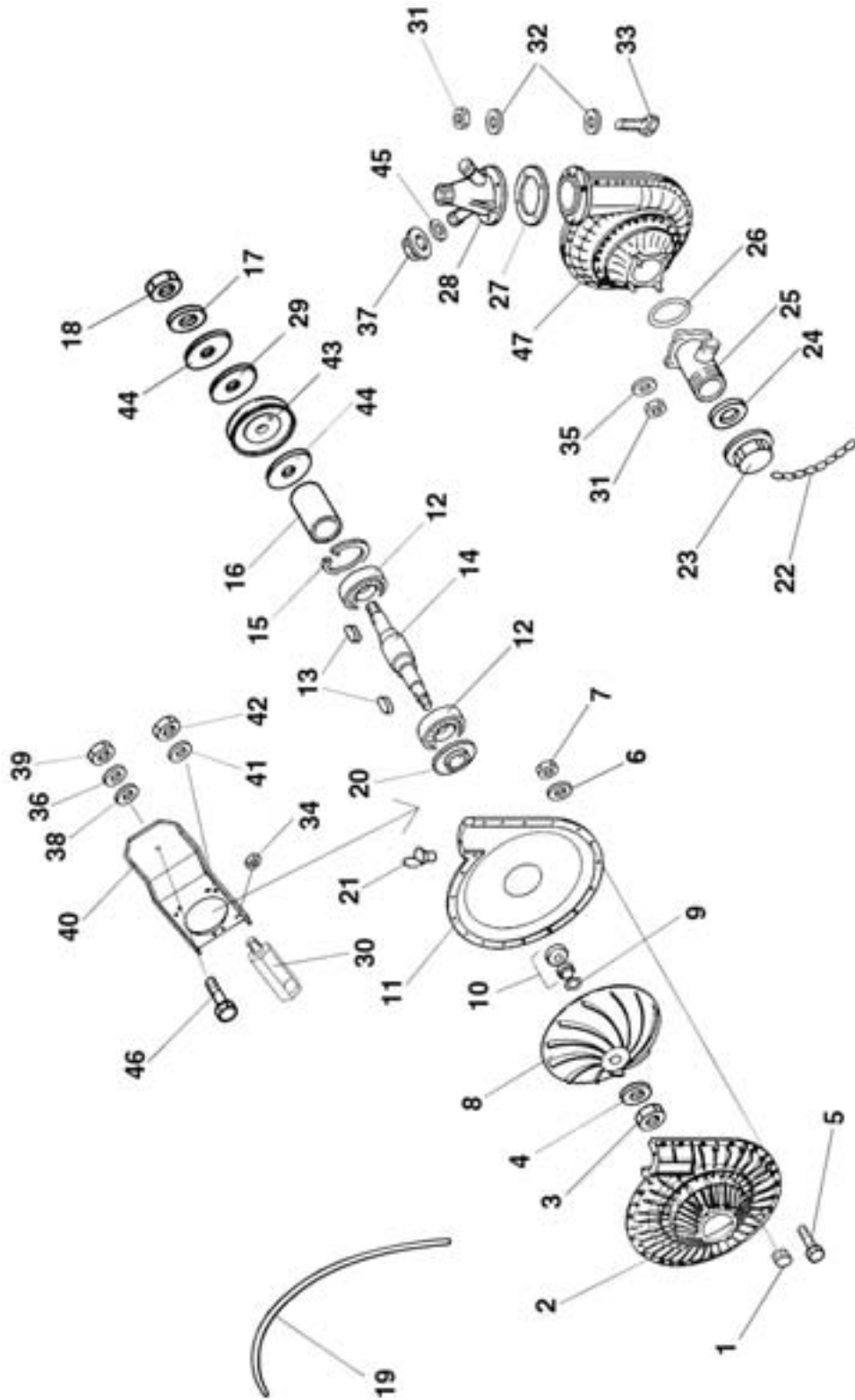
<u>REF#</u>	<u>QTY.</u>	<u>PART NO.</u>	<u>DESCRIPTION</u>
38	4	F0.025.045	Clamp D.25/45
39	2	F0.024.036	Clamp D.24/36
40	2	00.058.006	Nut
41	1	02.395.000	Ball Valve
42	1	24.069.000	Elbow
43	1	20.795.000	Elbow
44	1	20.794.000	Elbow

INLINE FILTER ASSEMBLY 02.450.020



<u>REF#</u>	<u>QTY.</u>	<u>PART NO.</u>	<u>DESCRIPTION</u>
1	1	02.450.001	Body
2	2	OR3969353	O-Ring D.39.69 x 3.53
3	1	326003.030	Cartridge 50 Mesh (Blue)
3	Optional	326002.030	Cartridge 32 Mesh (White)
4	1	OR7463533	O-Ring D.74.63 x 5.33
5	1	3262100.020	Bowl
6	1	02.450.003	Back Nut
7	1	3262100.030	Conveyor
8	1	3262100.100	Valve Body

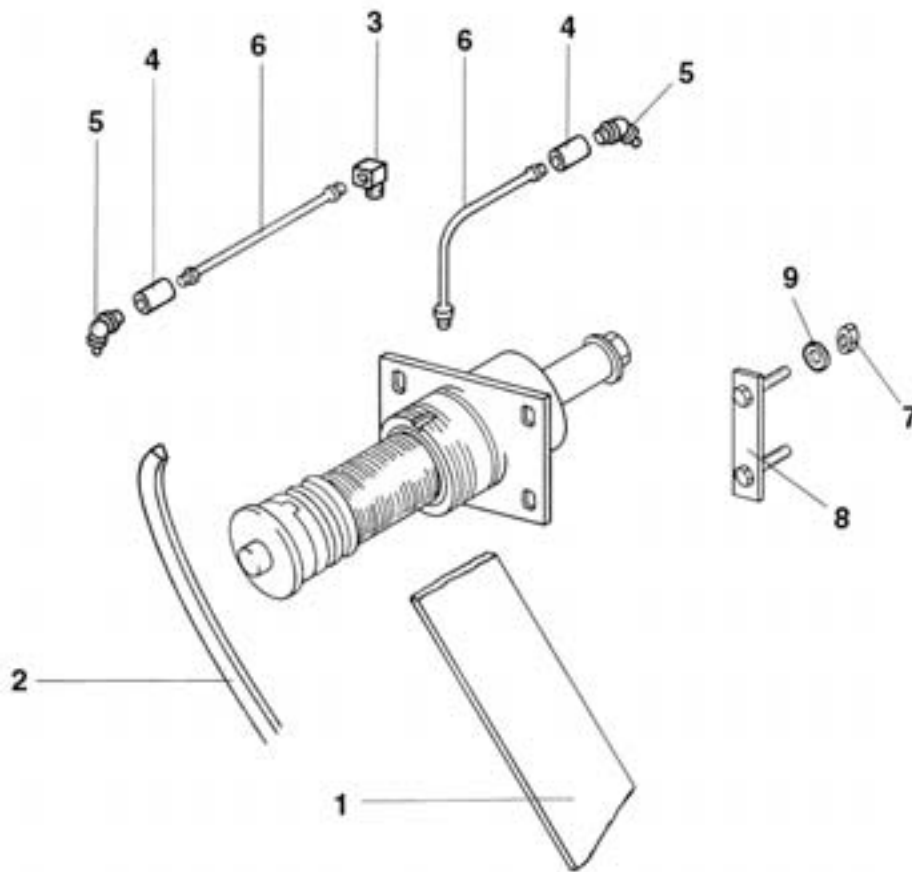
PUMP & TENSION PULLEY ASSEMBLY



PUMP & TENSION PULLEY ASSEMBLY

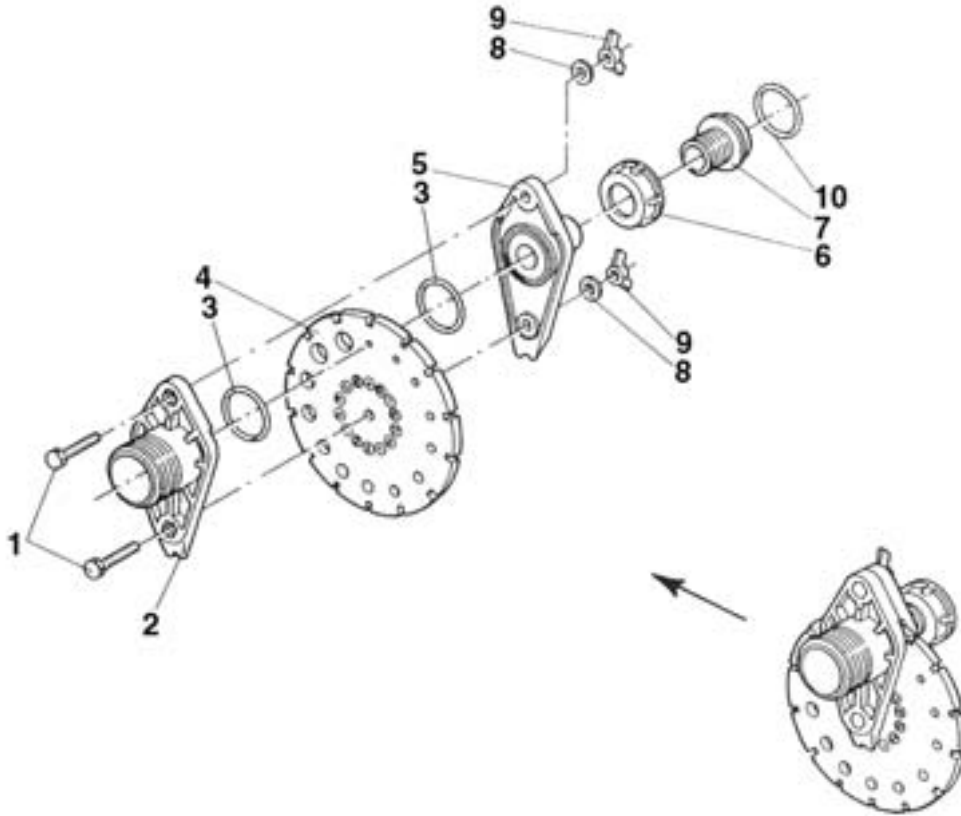
<u>REF#</u>	<u>QTY.</u>	<u>PART NO.</u>	<u>DESCRIPTION</u>
1	2	TM.010.015	Plug 10 x 1.5
2	1	02.152.010	Housing, Front Half
3	1	DOT.10.5587	Brass Nut M10
4	1	RP.010.00I	Washer D.10 INCX
5	17	TCC.05.25	Screw M5 x 25
6	17	RP.005.000	Washer D.5
7	17	DOT.05.5587	Brass Nut M5
8	1	02.153.000	Impeller
9	1	02.114.000	Washer
10	1	00.085.024CS	Pump Seal Kit
11	1	02.151.010	Housing Back Half
12	2	6303-2RS	Bearing
13	2	L.05.05.10	Key 5 x 5 x 10
14	1	02.155.010	Shaft
15	1	IO.047.000	Circlip I.47
16	1	02.722.000	Bushing
17	1	RP.010.030	Washer D.10 x 30
18	1	D0.10.5588G	Nut M10
19	1	OR.C02.070	O-Ring CORD D.2 L=700
20	1	20.406.000	Cover
21	1	02.473.000	Oil Feeder M8
22	2	04.111.022	Chain L=220
23	1	02.120.000	Cap, Drain
24	1	02.130.000	Gasket
25	1	02.116.000	Two Way Tap
26	1	OR.003.181	O-Ring
27	1	02.179.000	Gasket
28	1	02.113.000	Three Way Tap
29	1	02.723.005	Washer 2mm
30	1	02.963.100	Support, Tensioner
31	8	DOT.06.5587	Brass Nut M6
32	8	RP.006.000	Washer D.6
33	4	TE.006.025T	Bolt M6 x 25
34	1	DA.010.0AG	Nut M10 x 1.5
35	3	RP.006.018	Washer D.18
36	2	RP.012.000	Washer D.12
37	1	TF.012.000	Cap
38	1	MT.012.000	Belleville Washer D.12
39	1	DA.012.0AG	Nut M12 x 1.75
40	1	02.978.000DX	Bracket
41	3	RP.008.024	Washer D.8 x 24
42	3	D0.08.5588G	Nut M8
43	1	02.723.002	Pulley D.82 x 1 3V
44	2	02.723.001	Washer, 3mm Pulley
45	1	OR.000.117	O-Ring 13.1 x 2.62
46	1	TE.012.040T	Bolt M12 x 40
47	1	02.157.050	Pump Assembly

FAN SUPPORT



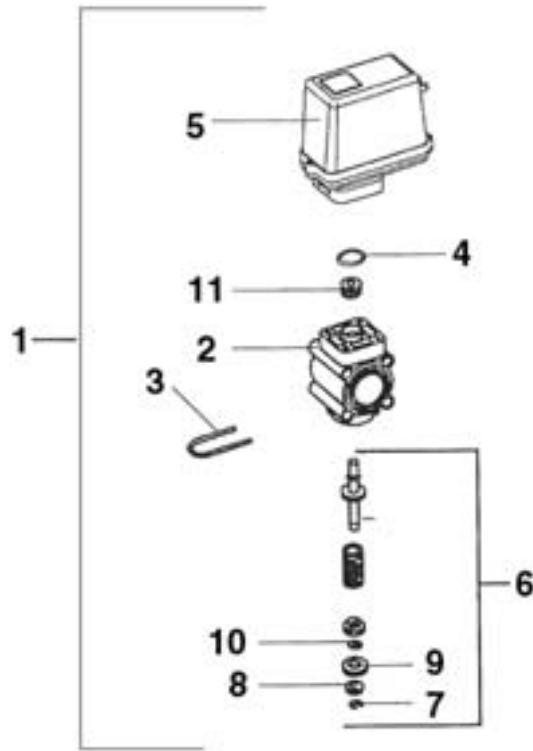
<u>REF#</u>	<u>QTY.</u>	<u>PART NO.</u>	<u>DESCRIPTION</u>
1	1	C0.690.J50	Drive Belt
2	1	C0.530.03V	V Belt
3	1	02.736.000	Connector 90° s/n 001042 - 011142
3A	1	02.736.000	Connector s/n 020256 ---
4	2	02.737.000	Bushing s/n 001042 - 011142
4A	1	02.737.000	Bushing s/n 020256 ---
5	2	IS.010.001	Grease Zerk s/n 001042 - 011142
5A	1	IS.010.001	Grease Zerk s/n 020256 ---
6	2	02.738.040	Extension L=400 s/n 001042 - 011142
6A	1	02.738.040	Extension L=400 s/n 020256---
7	4	D0.12.5588G	Nut M12
8	2	02.945.000	Bolt Clamp
9	4	RP.012.036	Washer D.12 x 36

DIAL-A-RATE 02150000

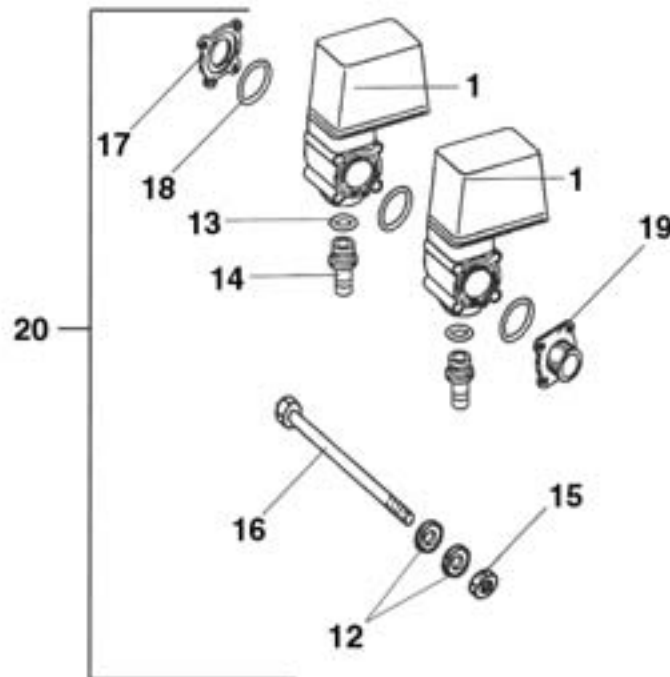


<u>REF#</u>	<u>QTY.</u>	<u>PART NO.</u>	<u>DESCRIPTION</u>
1	2	TE.006.030I	Bolt M6 x 30
2	1	02.149.000	Body Male
3	3	OR.002.062	O-Ring D.15.6 x 1.78
4	1	02.148.000	Disc
5	1	02.147.000	Body Female
6	1	00.055.045	Nut
7	1	02.117.000	Adaptor Nipple
8	2	RP.006.000	Washer D.6
9	2	DF.OTT.006	Nut M6 Wing
10	1	02.349.000	Gasket

OPTIONAL SOLENOID CONTROL



OPTIONAL SOLENOID COMMAND GROUP



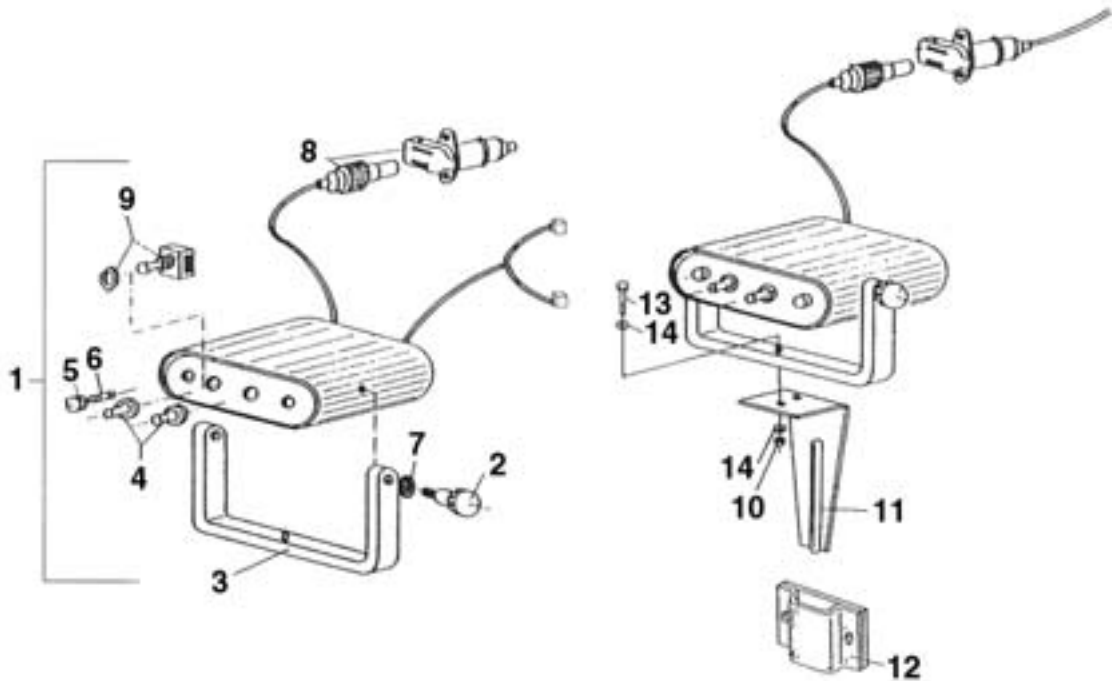
OPTIONAL SOLENOID CONTROL

<u>REF#</u>	<u>QTY.</u>	<u>PART NO.</u>	<u>DESCRIPTION</u>
1	1	02.390.029	Solenoid Valve
2	1	02.390.007	Body
3	1	02.390.005	Clip
4	1	OR.002.075	O-Ring D.18.77 x 1.78
5	1	02.390.028	Motor
6	1	02.390.027	Stem Assembly
7	1	02.390.013	Lock Clip
8	1	02.390.014	Washer
9	1	02.390.015	Washer
10	1	02.390.026	Washer
11	1	02.390.008	Seal D.6 x 17 x 6 Viton

OPTIONAL SOLENOID COMMAND GROUP

<u>REF#</u>	<u>QTY.</u>	<u>PART NO.</u>	<u>DESCRIPTION</u>
12	8	RP.008.000	Washer D.8
13	2	OR.000.130	O-Ring D.22.22 x 2.62
14	2	02.407.000	Hose Barb
15	4	D0.08.5588G	Nut M8
16	4	TCE.008.150	Bolt M8 x 150
17	1	02.390.017	Flange
18	3	OR.003.156	O-Ring D.39 x 2.62
19	1	02.390.018	Connector
20	1	02.390.08C	Solenoid Command Group Assembly

OPTIONAL CONTROL BOX FOR SOLENOID VALVE

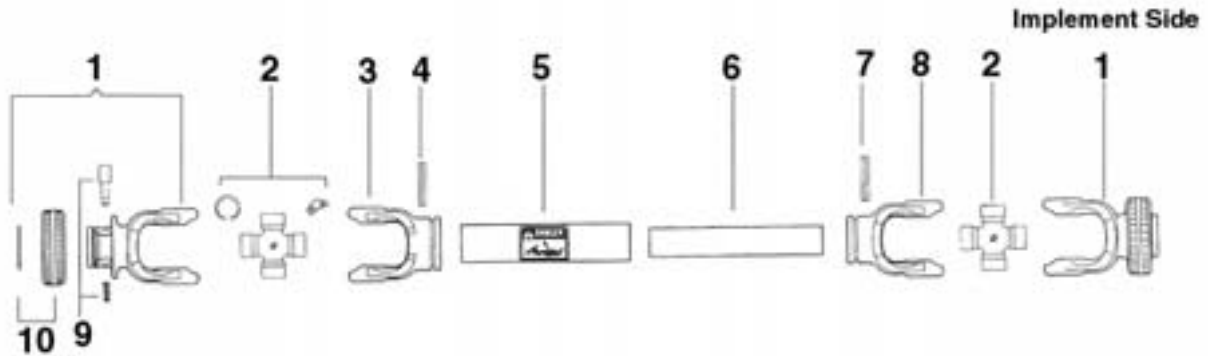


<u>REF#</u>	<u>QTY.</u>	<u>PART NO.</u>	<u>DESCRIPTION</u>
1	1	02.391.07C	Control Box Assembly L/Ref. 8
2	2	02.391.007	Knob, Bolt
3	1	02.391.006	Mounting Bracket for Box
4	2	02.391.001	Switch Cap
5	2	02.391.003	Panel Fuse Holder
6	2	02.391.004	Fuse 1.25 AMP
7	2	RD.006.000	Washer
8	1	02.391.005	Plug & Socket Kit
9	2	02.391.002	Double Pole Switch

KIT FOR CONTROL SOLENOID VALVE

10	1	DA.008.0AG	Nut
11	1	20.111.000	Mounting Bracket Electric Control
12	1	20.107.000	Support Control Assembly
13	1	TE.008.025T	Bolt
14	2	RP.008.024	Washer D.8 x 24

BONDIOLI & PAVESI PTO DRIVELINE 7108066NNT077



<u>REF#</u>	<u>QTY.</u>	<u>PART NO.</u>	<u>DESCRIPTION</u>
1	1	572080351	RS Collar Yoke 1-3/8 6-Spline
2	2	41208	Cross Kit Assembly #8
3	1	204086860	Outer Tube Yoke #8
4	1	341054000	Roll Pin O.T. #8
5	1	225730860	Outer Drive Tube #8
6	1	225690860	Inner Drive Tube #8
7	1	341055000	Roll Pin I.T. #8
8	1	204086861	Inner Tube Yoke #8
9	2	403000001	Quick Disconnect Pin Kit
10	2	240003051	RS Collar 5-6
11	1	572060351	RS Collar Yoke 1-3/8 6-Spline
	1	5N08086N1	Shield Kit With Bearings #8

LIMITED WARRANTY



GEARMORE, INC., warrants each new Gearmore product to be free from defects in material and workmanship for a period of twelve (12) months from date of purchase to the original purchaser. This warranty shall not apply to implements or parts that have been subject to misuse, negligence, accident, or that have been altered in any way.

Our obligation shall be limited to repairing or replacement of any part, provided that such part is returned within thirty (30) days from date of failure to Gearmore through the dealer from whom the purchase was made, transportation charges prepaid.

This warranty shall not be interpreted to render us liable for injury or damages of any kind or nature, direct, consequential or contingent, to person or property. This warranty does not extend to loss of crops, loss because of delay in harvesting or any other expenses, for any other reasons.

Gearmore in no way warrants engines, tires, or other trade accessories, since these items are warranted separately by these respective manufacturers.

Gearmore reserves the right to make improvements in design or changes in specification at any time, without incurring any obligations to owners or units previously sold.

GEARMORE, INC.
13477 Benson Ave.
Chino, CA 91710

Always refer to and heed machine operating warning decals on machine.

The serial number of this product is stored in our computer database, thus submitting a warranty registration card is not required.