



# **IN-ROW RETRACTABLE BLADES**

**Operation, Service  
& Parts Manual**

**May 2001**

# TABLE OF CONTENTS

General Safety Instructions . . . . .	1
Sensing Device Adjustment . . . . .	2
Sensing Rod Adjustment . . . . .	3
General Information . . . . .	4
General Operating Tips . . . . .	5
General Maintenance . . . . .	6
Spare Parts . . . . .	7-19
Limited Warranty . . . . .	20

Date of Purchase: \_\_\_\_\_

Model Number: \_\_\_\_\_

Serial Number: \_\_\_\_\_

# GENERAL SAFETY INSTRUCTIONS

- If you leave the tractor, even temporarily, verify that the implement has been lowered to the ground or positioned in such a way as not to be dangerous for the operator and other people.
- If you leave the tractor switch the engine off.
- In case of doubt on what to do during the installation, working and maintenance, switch the engine of the tractor off, consult the manual or your dealer.
- Start up the implement only when you are properly seated.
- In case of emergency, immediately switch the engine of the tractor off.
- It is forbidden to execute operations different from those stated in the usage and purpose of the implement.
- It is forbidden to add accessories, options and whatever else which has not been previously authorized by the manufacturer.
- The machine must not be used by more than one operator at a time.

# SENSING DEVICE ADJUSTMENT



TURN OFF THE ENGINE BEFORE PERFORMING  
THE FOLLOWING OPERATION



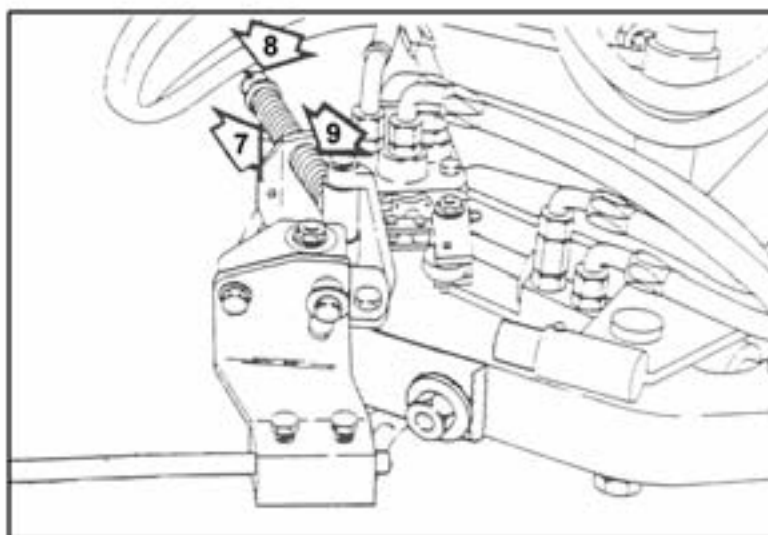
Your in-row blade comes with 3 springs:

1. Light duty spring for working in young plants or plants with delicate bark.
2. Medium duty spring, which is the spring used in most applications.
3. Heavy duty spring for when there are tall or sturdy weeds.

To change the return spring (pict. 9 pos. 7) remove the lock pin (pos. 8) take off the flat washer, take off the spring and change it with a spring more adequate to the kind of work you are going to perform.

**Special Note:** For the most sensitive sensor setting (lightest pressure on the plants), remove the spring (pict. 09, pos. 7). Be sure to reinstall the flat washer and click-pin (pict. 09, pos. 8).

Never remove the spring shown in (pict. 9, pos. 9) unless damaged and then only replace with the same size.



Pict. 9

# SENSING ROD ADJUSTMENT



**Turn off engine before performing the following operations**

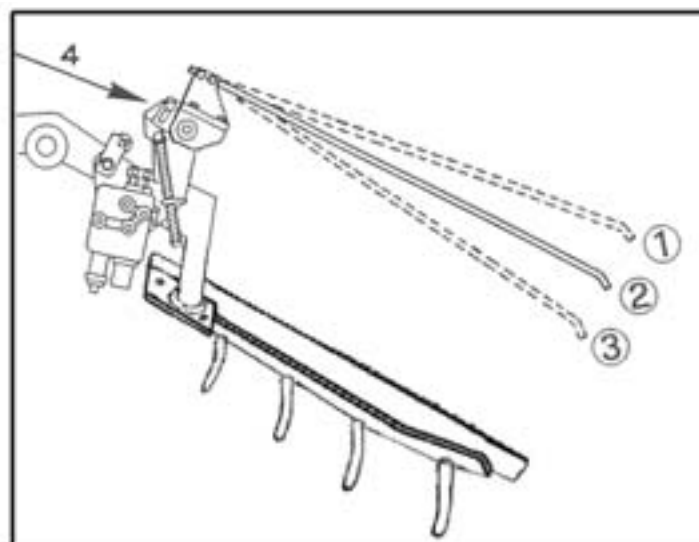


To insure that the in-row retractable blade is operating correctly, a few simple adjustments are necessary.

- Make sure the rod is extended to the same length as the blade (pict. 13). By moving the rod out longer than the blade, the blade will leave a larger circle around the vine.
- Make sure the sensing rod is parallel to the blade (pict. 13, pos. 2), which is the correct position for most operations.
- In (pict. 13, pos. 1), the rod is slightly forward. We suggest this position to work in plants with deformed trunks, such as old vineyards.

**Note:** Ground speed will affect the sensor rod setting requirements. A faster ground speed also requires that the rod is further in front of the blade.

- In (pict. 13, pos. 3), the rod is shown in the incorrect position.
- To adjust the sensor rod, turn the 2 fastening bolts (pict. 13, pos. 4).



**Pict. 13**

# GENERAL INFORMATION

1. Two blade lengths are available, 24 and 31 inch. Make sure you have the best length for your operation.
2. To operate correctly, the single blade requires 6 G.P.M. The double blade requires a flow divider and 12 G.P.M.
3. If the hydraulic output of the tractor is too high, a flow restrictor is required.
4. The hydraulic pressure requirement is a minimum of 2000 P.S.I.

# GENERAL OPERATING TIPS

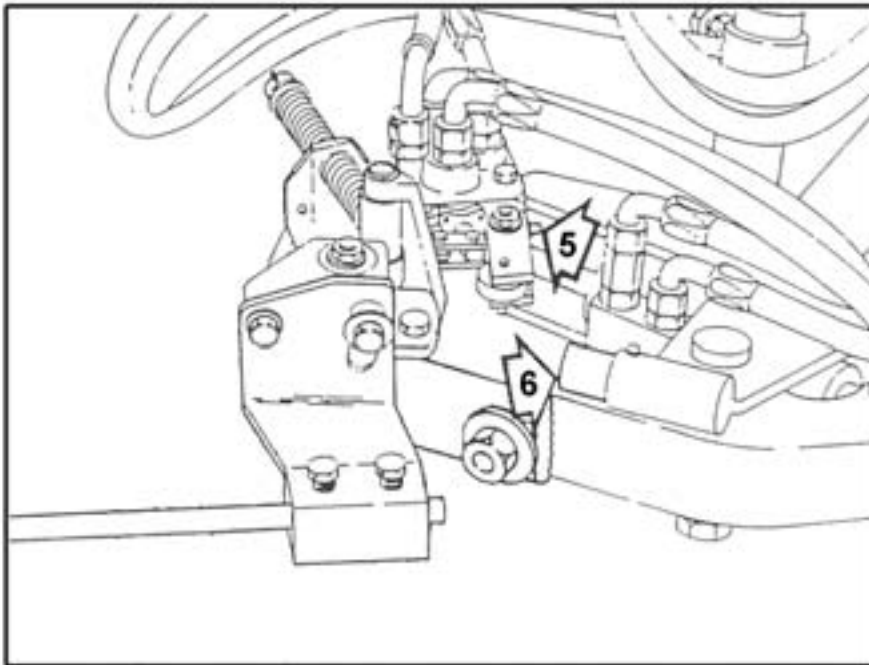
1. The blade should be set 1-1/2 to 3 inches under the soil.
2. The sensor rod should be as long as the blade used.
3. If the in-row blades are mounted on a disc, cultivator, etc., set the blade to operate at only 1-1/2 to 3 inches deep.
4. If you are mounting tools next to the blade, set depth of tools approximately 1 inch deeper.
5. The blade should be operated 4 to 6 inches beyond the center line of the vine row.
6. The blade must have a valve to override the system to retract the blade from the tractor seat.
7. To begin, operate in-row retractable blade at approximately 2 miles per hour. When comfortable with the operation, you can go to speeds of up to 4 M.P.H.
8. Ground speed will affect the sensor rod setting requirements. A faster ground speed requires that the rod setting be further in front of the blade.

# GENERAL MAINTENANCE

## *GREASE POINTS*

In picture 22, pos. 5, is a grease fitting, which should be greased daily.

In picture 22, pos. 6, is the eccentric pin. Make sure that it is always “smeared” with grease.

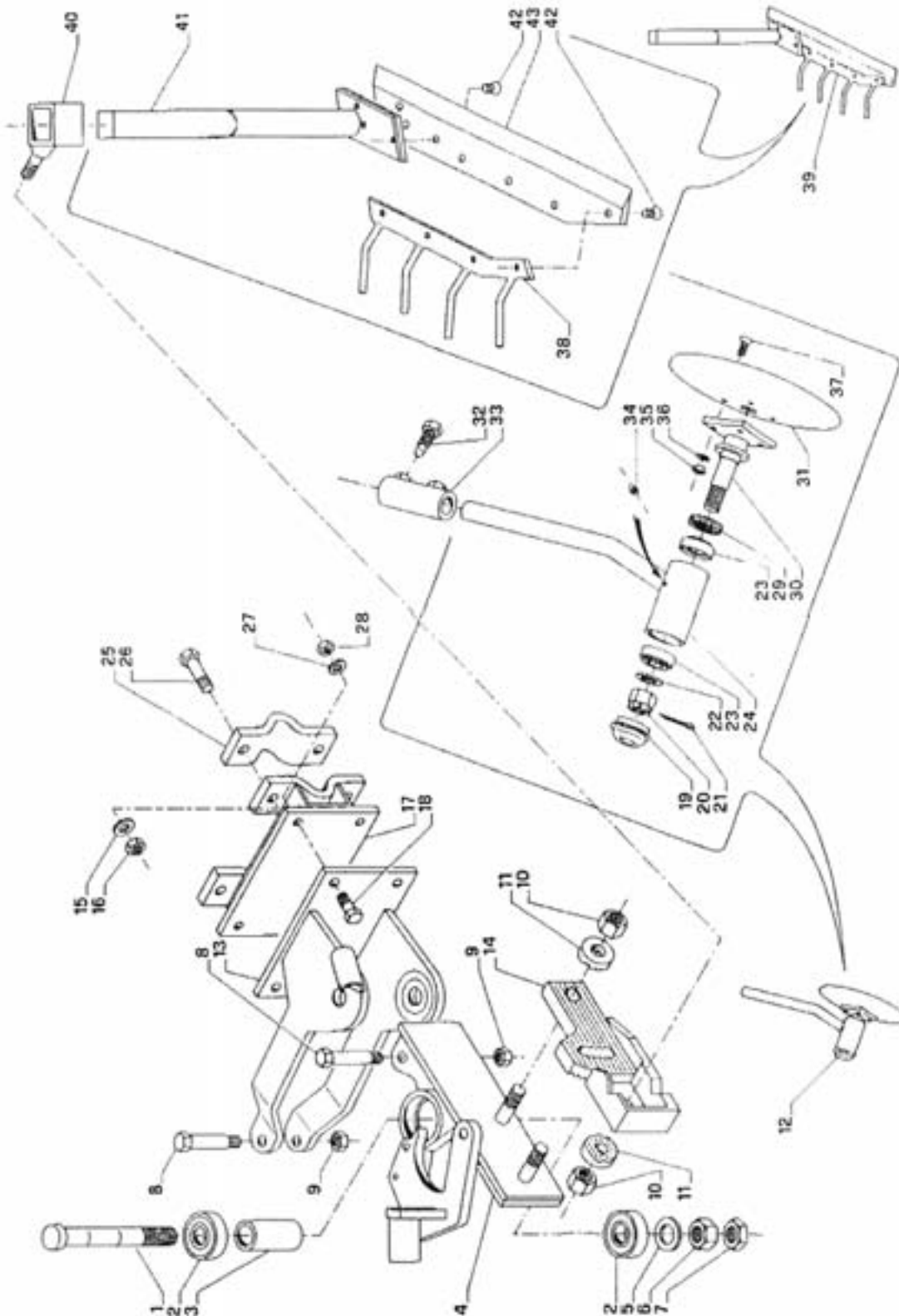


**Pict. 22**



# SINGLE IN-ROW BLADE GIB24R & GIB31R

## Right Hand Side



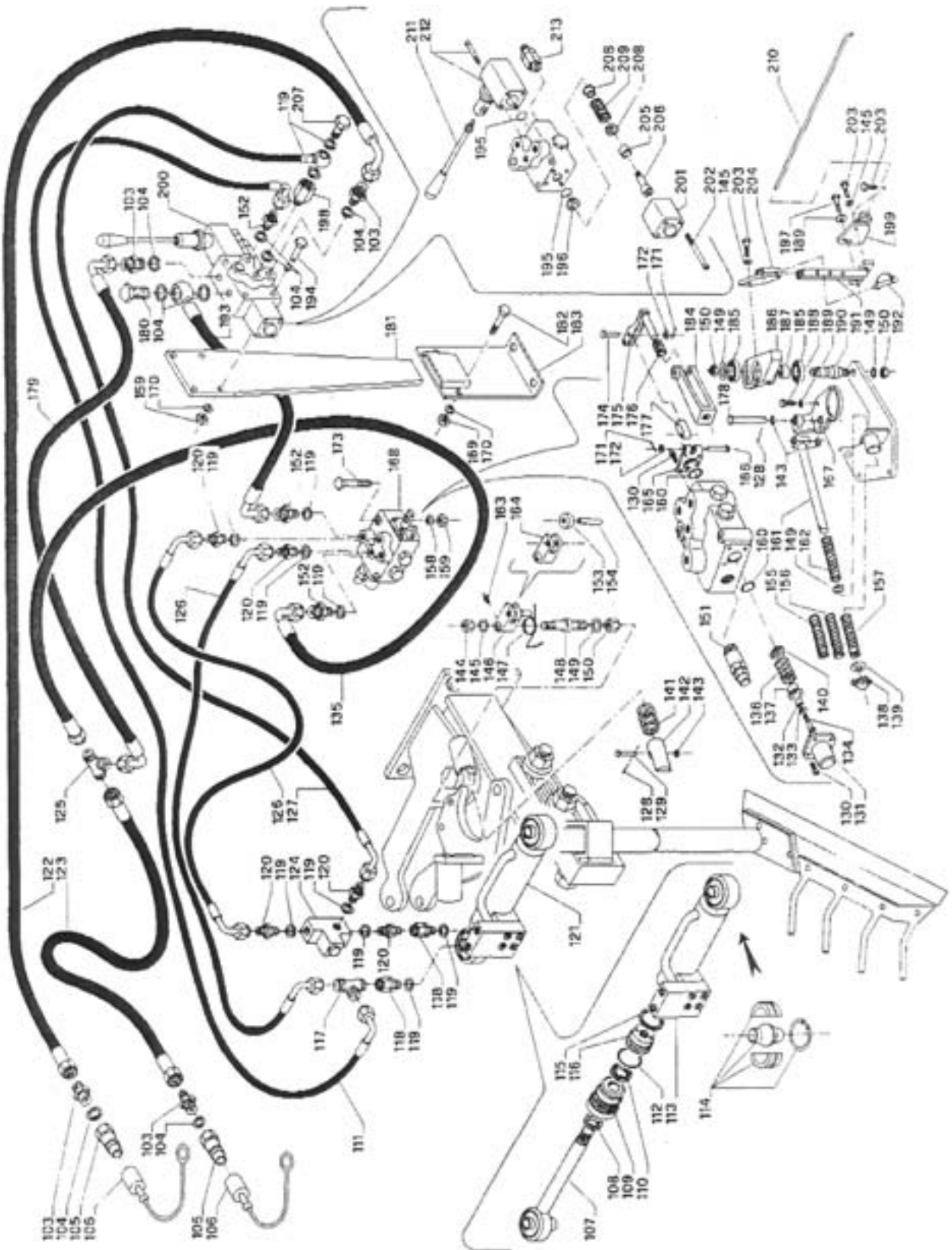
# SINGLE IN-ROW BLADE GIB24R & GIB31R

## Right Hand Side

<u>REF #</u>	<u>PART NO.</u>	<u>DESCRIPTION</u>
1	0101506	Bolt M30 x 213 x 2
2	6306-2RS	Bearing
3	0101507	Spacer
4	0701062	Mounting Bracket
5	M2RONP1030	Washer, Flat D30
6	M2DESF2M30	Nut M30 x 2 5588
7	M2DENF3M30	Nut M30 x 2 5589
8	0101505	Bolt 18 x 1.5 D.19 x 90
9	M2DEZF2M18	Nut M18 x 1.5 5588
10	M2DENZIM20	Nut M20 5587
11	0102503	Knurled Washer 20
12	0901011	Coulter Assembly
13	0901061	Mounting Plate
14	0701055	Mounting Plate
15	M2RONPIZ16	Washer D16
16	M2DEA01M16	Nut M16
17	0901062	Mounting Bracket
18	M2TEZ14040	Bolt M14 x 40
19	M40101C062	Hub Cap D62
20	M2DECF1M27	Castle Nut M27 x 2 5593
21	M2COP00550	Cotter Key 5 x 50
22	M2RONP1027	Washer Flat D27
23	32206	Bearing
24	0901082	Support Housing
25	0901501	Clamp
26	M2TEZ16070	Bolt M16 x 70
27	M2RONP1Z14	Washer Flat D14
28	M2DEA01M14	Nut D14
29	35X62X10	Seal
30	3531051	Axle
31	M44FD1320L	Disc, Coulter D320-4 Hole
32	0101503	Bolt
33	0901071	Tube, Coulter Mount
34	M2INGM8125	Grease Zerk 8 x 1.25
35	M2DEN02M10	Nut M10 5588
36	M2RONP1010	Washer, Flat M10
37	M2TSE10030	Bolt M10 x 30
38	0135054	Comb L-630 RH
38	0136054	Comb L-800 RH
39	0135009	Knife Assy 24"
39	0136009	Knife Assy 31"
40	0701056	Clamp
41	0135063	Arm
42	M2TSE12020	Bolt, Allen M12 x 20
43	M4LACL9163	Blade L-630 RH
43	M4LACL9080	Blade L-800 RH

# SINGLE IN-ROW BLADE GIB24R & GIB31R

## Right Hand Side



# SINGLE IN-ROW BLADE GIB24R & GIB31R

## Right Hand Side

<u>REF #</u>	<u>PART NO.</u>	<u>DESCRIPTION</u>
103	M50103505	Nipple 1/2"
104	M5RB00012	Washer 1/2" Bonded
105	M51R21M12	Quick Coupler 1/2" Male
106	M5TC1012F	Cover Quick Coupler
107	M50103254	Piston Rod
*108	M50103213	Seal
109	M50103212	Gland Packing
*110	M50103211	Seal
111	0903502	Hose
*112	M50103218	O-Ring
113	M50103255	Barrel, Hydraulic Cylinder
114	M50103256	Ball Kit, Hydraulic Cylinder
*115	M50103216	Seal
116	M50103217	Piston
117	M5RC38MMM	Adapter "T" 3/8" Male
118	M5RC38GMF	Nipple M-F 3/8"
119	M5RB00038	Washer Bonded 3/8"
120	M50103506	Nipple 3/8"
121	0103559	Cylinder Blade Actuator
122	0903507	Hose
123	0903503	Hose
124	M5VL0000M	Flow Divider
125	M50203502	Adaptor "T" 1/2"
126	0104509	Hose
127	0903501	Hose
128	M2COP00325	Cotter Pin 3 x 25
129	0103504	Pin
130	M2TCE05016	Allen Screw 5 x 16
131	M50103011	Cap Valve
132	M50103012	Spacer
133	M50103013	Washer D5
134	M50103014	Bolt M5 x 18
135	0903504	Hose
136	M50103016	Spring
137	M50103017	Disc f/Spring
138	M2COPSC004	Lynch Pin
139	M2RONP1Z15	Washer D14 x 42
140	M50103015	Disc f/Spring
141	0103521	Spring
142	0103514	Eccentric Lockpin 30mm
143	M2RONP1010	Washer D10
144	M2DEAF1M12	Nut m12 x 1.25
145	M2RONP1Z12	Washer D12
146	0103001	Complete Jack

# SINGLE IN-ROW BLADE GIB24R & GIB31R

## Right Hand Side

<u>REF #</u>	<u>PART NO.</u>	<u>DESCRIPTION</u>
147	0103525	Spring
148	0103511	Bolt
149	M2RONP1Z14	Washer D14
150	M2DEA01M14	Nut M14
151	M5VMD2100	Complete Valve
152	M50103508	Relief Valve 1/2" - 3/8"
153	0103515	Roller
154	M2SSP10045	Roll Pin 10 x 45
155	0103526	Spring 3.5
156	0103523	Spring 2.5
157	0103524	Spring 3
158	M2MDE18091	Washer 18 x 9.2 x 1
159	M2DEA01M08	Nut M8
160	M50103019	O-Ring
161	0103051	Rod
162	0103522	Spring 2
163	M21NGM8125	Grease Zerk 8 x 1.25
164	0103506	Jack
165	M50103018	Distributor Support
166	0103519	Pin
167	0103516	Bracket Register
168	M50103001	Valve Assembly
169	M2DEN02M08	Nut M8 5588
170	M2RONP1Z08	Washer D8
171	M2COP00220	Cotter Pin 2 x 20
172	M2RONP1006	Washer D6
173	M2TEZ08070	Bolt M8 x 70
174	0103518	Pin 6 x 28
175	0103512	Fork Distributor
176	0103520	Spring 3 - L=29
177	M50103023	Link
178	0103517	Pin
179	0903505	Hose
180	M5BUCA012	Banjo Bolt 1/2"
181	0503585	Valve Bracket
182	M2TEZ08035	Bolt M8 x 35
183	0503085	Valve Holder
184	0103513	Fork
185	6202-2RS	Bearing
186	0103510	Support
187	0103507	Spacer
188	M2TEZ12040	Bolt M12 x 40
189	0101514	Washer 12.5 x 6
190	0103508	Bolt

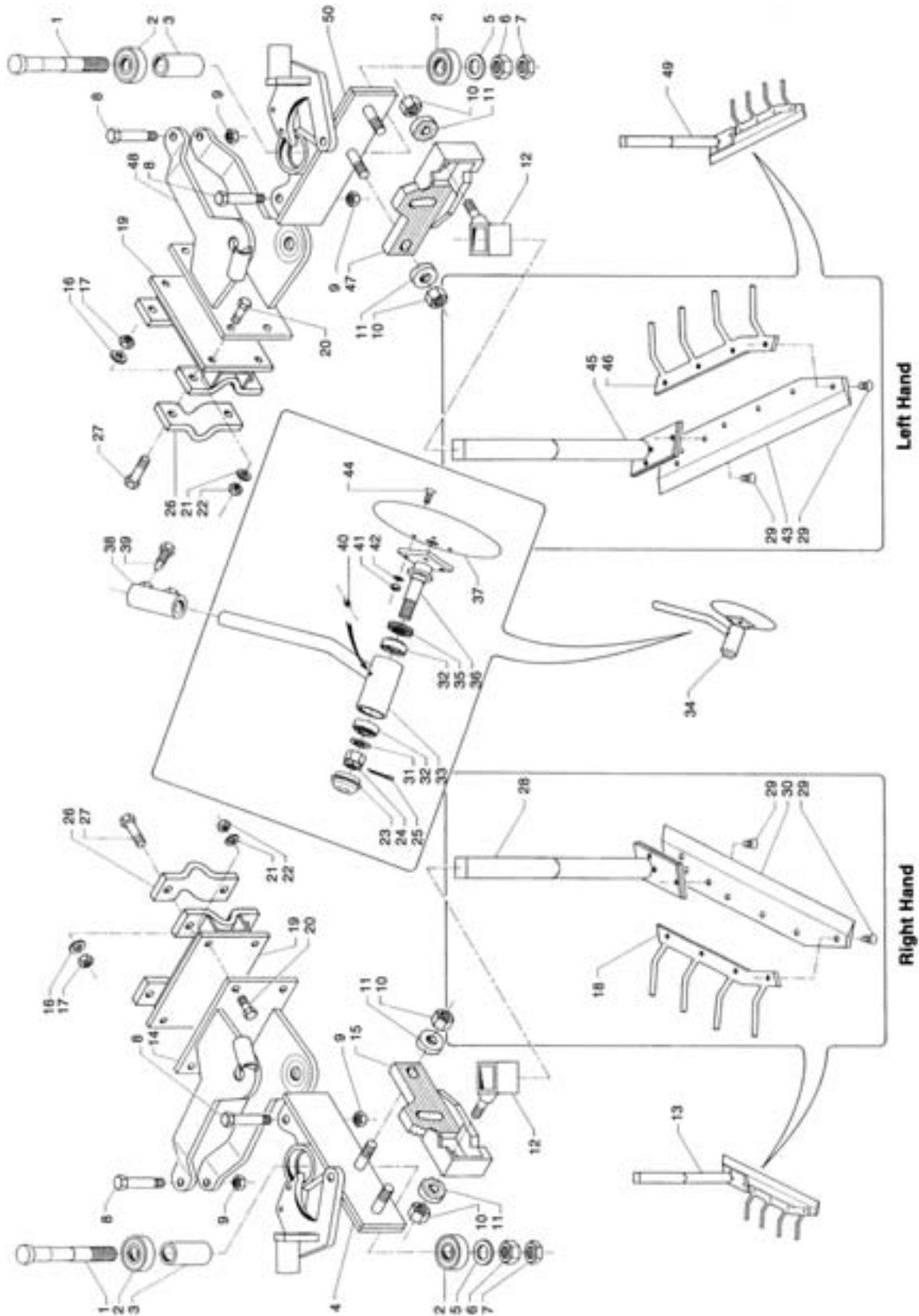
# SINGLE IN-ROW BLADE GIB24R & GIB31R

## Right Hand Side

<u>REF #</u>	<u>PART NO.</u>	<u>DESCRIPTION</u>
x191	0701066	Wand Extension
192	M2COPMO008	Lockpin D8
193	0903506	Hose
194	M2TE008065	Bolt 8 x 65
195	M50403019	O-Ring 2.115
196	M50503018	Seal
197	M2TEZ12030	Bolt M12 x 30
198	M5R100006	Reducer M-1/2 - F-3/8
199	0103509	Rod Clevis D-35 RH
200	M5DE00030	Control Valve Single Spool
201	M5ED00111	Cap Valve
202	M50503017	Bolt M5 x 40
203	M2TEZ12025	Bolt M12 x 25
x204	0701065	Wand Extension
205	M50503016	spacer
206	M50503015	Bolt M8 x 20
207	M5BUCA038	Banjo Bolt 3/8"
208	M50503014	Disc Spring
209	M50503013	Spring
210	0145563	Sensing Rod L=680
	0145562	Sensing Rod L=850
211	M50503012	Valve Handle
212	M5DSV0040	Handle Kit
213	M50503011	Pressure Regulator
*	RTONEW0000	Hydraulic Cylinder Seal Kit
x	0503010	Wand Height Extension Assembly

# DOUBLE IN-ROW BLADE GIB24RL & GIB31RL

## Right and Left Hand Sides



# DOUBLE IN-ROW BLADE GIB24RL & GIB31RL

## Right and Left Hand Sides

<u>REF #</u>	<u>PART NO.</u>	<u>DESCRIPTION</u>
1	0101506	Bolt M30 x 213 x 2
2	6306-2RS	Bearing 30 x 72 x 19
3	0101507	Spacer
4	0701062	Mounting Bracket RH
5	M2RONP1030	Washer, Flat D30
6	M2DESF2M30	Nut M30 x 2 5588
7	M2DENF3M30	Nut M30 x 2 5589
8	0101505	Bolt 18 x 1.5 - M19 x 90
9	M2DEZF2M18	Nut M18 x 1.5 5588
10	M2DENZ1M20	Nut M20 5587
11	0102503	Knurled Washer 20
12	0701056	Clamp
13	0135009	Knife Assy. 24" RH
13	0136009	Knife Assy. 31" RH
14	0901061	Mounting Bracket RH
15	0701055	Mounting Plate RH
16	M2RONPIZ16	Washer D16
17	M2DEA01M16	Nut M16
18	0135054	Comb L-630 RH
18	0136054	Comb L-800 RH
19	0901062	Mounting Bracket
20	M2TEZ14040	Bolt M14 x 40
21	M2RONP1Z14	Washer Flat D14
22	M2DEA01M14	Nut D14
23	M40101C062	Hub Cap D62
24	M2DECF1M27	Castle Nut M27 x 2 5593
25	M2COP00550	Cotter Key 5 x 50
26	0901501	Clamp
27	M2TEZ16070	Bolt M16 x 70
28	0135063	Arm
29	M2TSE12020	Bolt, Allen M12 x 20
30	M4LACL9163	Blade L-630 RH
30	M4LACL9080	Blade L-800 RH
31	M2RONP1027	Washer Flat D27
32	32206	Bearing
33	0901082	Support Housing
34	0901011	Coulter Assy.
35	35X62X10	Seal
36	3531051	Axle
37	M44FD1320L	Disc, Coulter D320-4 Hole
38	0901071	Tube, Coulter Mount
39	0101503	Bolt 16 x 40
40	M2INGM8125	Grease Zerk 8 x 1.25
41	M2DEN02M10	Nut M10 5588
42	M2RONP1010	Washer, Flat M10



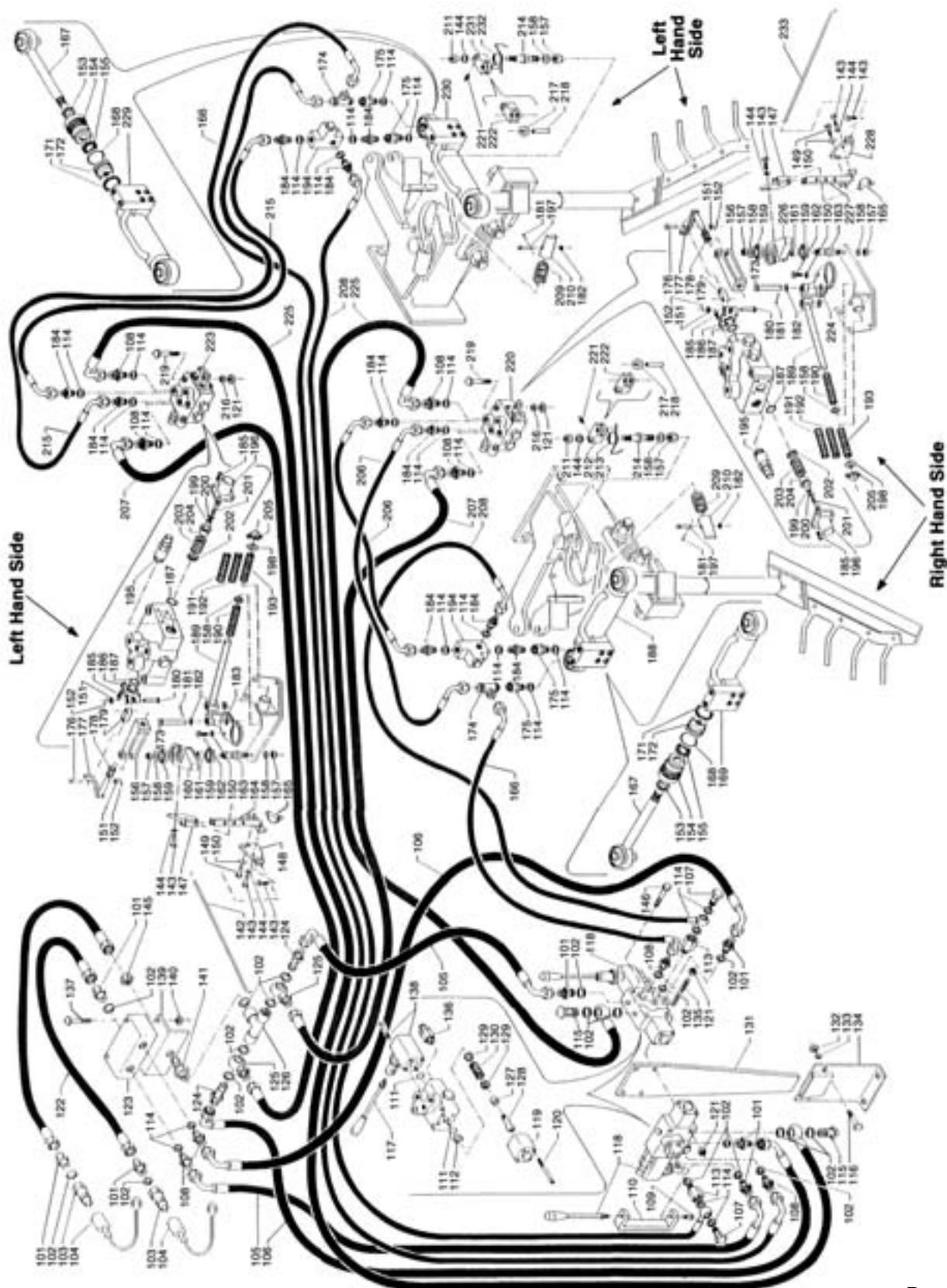
# DOUBLE IN-ROW BLADE GIB24RL & GIB31RL

## Right and Left Hand Sides

<u>REF #</u>	<u>PART NO.</u>	<u>DESCRIPTION</u>
43	M4LACL6305	Blade L=630 LH
43	M4LACL8005	Blade L=800 LH
44	M2TSE10030	Bolt, Allen 10 x 30
45	0335063	Arm LH
46	0335054	Comb L=630 LH
46	0336054	Comb L=800 LH
47	0335055	Mounting Plate LH
48	0990061	Mounting Bracket LH
49	0335009	Knife Assy. 24" LH
49	0336009	Knife Assy. 31" LH
50	0990062	Mounting Bracket LH

# DOUBLE IN-ROW BLADE GIB24RL & GIB31RL

## Right and Left Hand Sides



# DOUBLE IN-ROW BLADE GIB24RL & GIB31RL

## Right and Left Hand Sides

<u>REF #</u>	<u>PART NO.</u>	<u>DESCRIPTION</u>
101	M50103505	Nipple 1/2 m-m
102	M5RB00012	Washer Bonded 1/2
103	M51R21M12	Quick Coupler Male
104	M5TC1012F	Cover Q/C
105	0903505	Hose 1/2" R2 1950 mm F90-F90
106	0903507	Hose
107	M5BUCA038	Banjo Bolt 3/8
108	M50103508	Nipple m-m 1/2 - 3/8
109	M2TE010020	Bolt 10 x 20
110	0901502	Bracket Control Valve
111	M50403019	O-Ring
112	M50503018	Guide O-ring
113	M5R100006	Reducer M 1/2 - F 3/8
114	M5RB00038	Washer Bonded 3/8
115	M5BUCA012	Banjo Bolt 1/2
116	M2TEZ08035	Bolt 8 x 35
117	M50503012	Handle
118	M5DE00030	Control Valve
119	M5ED00111	Body Control Valve
120	M50503017	Bolt 5 x 40
121	M2DEA01M08	Locknut M8
122	0903503	Hose 1350 FNPT - FNPT
123	M5DFVL012	Manifold Divider
124	M5BUCA212	Banjo Bulkhead 1/2
125	M5ROF1M41	Banjo Nipple 1/2 x 1/2
126	M5RFFF012	Tee Fitting 1/2 Female
127	M50503016	Spacer
128	M50503015	Bolt 8 x 20
129	M50503014	Seat Spring
130	M50503013	Spring
131	0901503	Bracket Valve Pocket
132	M2DEN02M08	Nut M8
133	M2RONP1Z08	Washer D8
134	0503085	Pocket Control Valve
135	0901504	Stud M8
136	M50503011	Relief Valve
137	M2TE006065	Bolt 6 x 65
138	M5DCV0040	Valve Lever Assy.
139	0901505	Mounting Plate Flow Divider
140	M2DEN02M06	Nut M6
141	M50603501	Nipple bulkhead 1/2" m-m
142	0145563	Sensing Rod 24" RH
142	0145562	Sensing Rod 31" RH
143	M2TEZ12025	Bolt 12 x 25
144	M2RONP1Z12	Washer Flat D12

# DOUBLE IN-ROW BLADE GIB24RL & GIB31RL

## Right and Left Hand Sides

<u>REF #</u>	<u>PART NO.</u>	<u>DESCRIPTION</u>
145	M50203501	Nut Bulkhead Fitting 1/2"
146	M2TE008050	Bolt 8 x 50
147	0701065	Bracket Wand Attachment LH
148	0303509	Rod Clevis L.H.
149	M2TEZ12030	Bolt 12 x 30
150	0101514	Washer Flat 12.5 x 36 x 6
151	M2RONP1006	Washer Flat D6
152	M2COP00220	Cotter Key 2 x 20 - 4.8
153	M50103213	O-Ring
154	M50103212	Piston
155	M50103211	O-ring
156	0103513	Fork
157	M2DEA01M14	Locknut M14
158	M2RONP1Z14	Washer Flat D14
159	6202-2RS	Bearing 6202-2RS
160	0303510	Support Bearing
161	0103507	Spacer
162	M2TEZ12040	Bolt 12 x 40
163	0103508	Lockpin
164	0335066	Bracket Extension
165	M2COPMO008	Lynch Pin D8
166	0903502	Hose 3800 - 3/8 R2 F90 - F90
167	M50103214	Rod Cylinder
168	M50103218	O-ring
169	M50103215	Barrel Cylinder
171	M50103216	O-ring
172	M50103217	Piston
173	0103517	Pin D10 x 100
174	M5RC38MMM	Tee 3/8" m-m-m
175	M5RC38GMF	Nipple 3/8M - 3/8F
176	0103518	Pin D6 x 28
177	0103512	Fork
178	0103520	Spring D3 x 29
179	M50103023	Link
180	0103519	Pin D6 x 38
181	M2COP00325	Cotter Key 3 x 25
182	M2RONP1010	Washer Flat D10
183	0303516	Register Bracket LH
184	M50103506	Nipple 3/8 m-m
185	M2TCE05016	Bolt 5 x 16
186	M50103018	Support Valve Fork
187	M50103019	O-ring OR616
188	0103505	Cylinder GIB24 RH
189	0103051	Actuator Rod
190	0103522	Spring 2

# DOUBLE IN-ROW BLADE GIB24RL & GIB31RL

## Right and Left Hand Sides

<u>REF #</u>	<u>PART NO.</u>	<u>DESCRIPTION</u>
191	0103526	Spring 3.5
192	0103523	Spring 2.5
193	0103524	Spring 3
194	M5VL0000M	Manifold Tee
195	M5VMD2100	Relief Valve
196	M50103011	Cover Valve Spool
197	0103504	Pin D10 x 53
198	M2RONP1Z15	Washer Flat D14 x 42
199	M50103012	Spacer
200	M50103013	Washer Flat D5
201	M50103014	Bolt 5 x 18
202	M50103015	Seat Spring
203	M50103016	Spring Valve
204	M50103017	Seat Spring
205	M2COPSC004	Lynch Pin D4.5
206	0104509	Hose 3/8 F90 - F90 - 600mm
207	0903504	Hose 1/2 F90 - FD - 1600mm
208	0903501	Hose 3/8 F90 - Banjo - 3800mm
209	0103521	Spring
210	0103514	Eccentric Lockpin D30
211	M2DEAF1M12	Locknut M12 x 1.25
212	0103001	Complete Jack RH
213	0103525	Return Spring Freewheel RH
214	0103511	Pin
215	0304569	Hose 3/8 F90 - F90
216	M2MDE18091	Washer Flat 9.2 x 18 x 1
217	0103515	Roller
218	M2SSP10045	Roll Pin 10 x 45
219	M2TEZ08070	Bolt 8 x 70
220	M50103001	Valve Distributor RH
221	M2INGM8125	Grease Zerk M8 x 1.25
222	0103506	Fork
223	M50303001	Distributor Valve LH
224	0103516	Register Bracket RH
225	0903506	Hose 1/2" F90 - Banjo - 3600mm
226	0103510	Support Bearing
227	0701066	Bracket Extension RH
228	0103509	Bracket Wand Attachment RH
229	M50303215	Cylinder Barrel LH
230	0303508	Cylinder LH
231	0303001	Complete Jack LH
232	0303525	Return Spring Freewheel LH
233	0345563	Sensing Wand 24" LH
233	0345562	Sensing Wand 31" LH

# LIMITED WARRANTY



GEARMORE, INC., warrants each new Gearmore product to be free from defects in material and workmanship for a period of twelve (12) months from date of purchase to the original purchaser. This warranty shall not apply to implements or parts that have been subject to misuse, negligence, accident, or that have been altered in any way.

Our obligation shall be limited to repairing or replacement of any part, provided that such part is returned within thirty (30) days from date of failure to Gearmore through the dealer from whom the purchase was made, transportation charges prepaid.

This warranty shall not be interpreted to render us liable for injury or damages of any kind or nature, direct, consequential or contingent, to person or property. This warranty does not extend to loss of crops, loss because of delay in harvesting or any other expenses, for any other reasons.

Gearmore in no way warrants engines, tires, or other trade accessories, since these items are warranted separately by these respective manufacturers.

Gearmore reserves the right to make improvements in design or changes in specification at any time, without incurring any obligations to owners or units previously sold.

GEARMORE, INC.  
13477 Benson Ave.  
Chino, CA 91710

Always refer to and heed machine operating warning decals on machine.

The serial number of this product is stored in our computer database, thus submitting a warranty registration card is not required.