

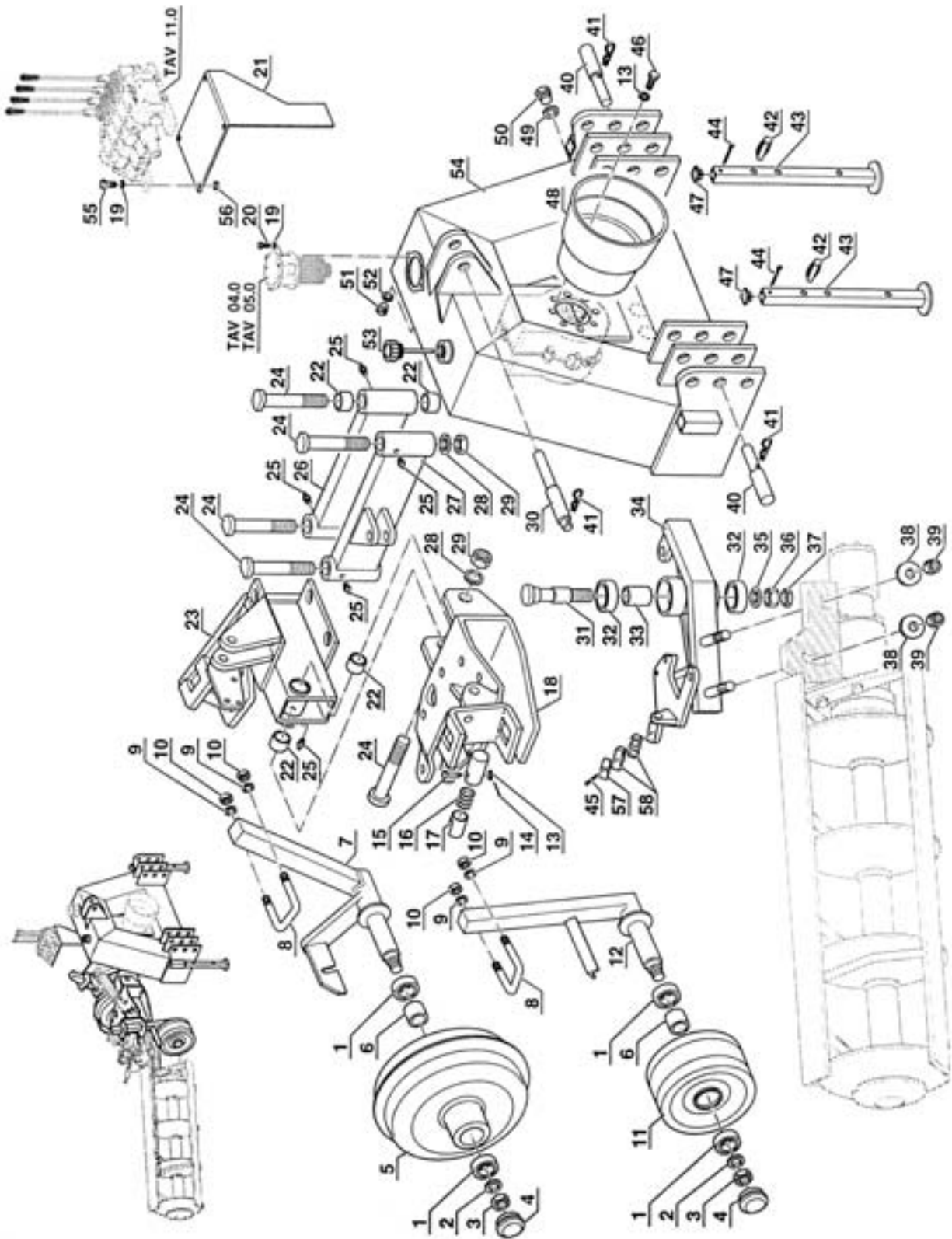


IN-ROW POWER DISC

**Parts Manual For
MITR5032 Narrow Row
Frame 60" Mercury 14**

June 2002

FRAME PARTS DRAWING



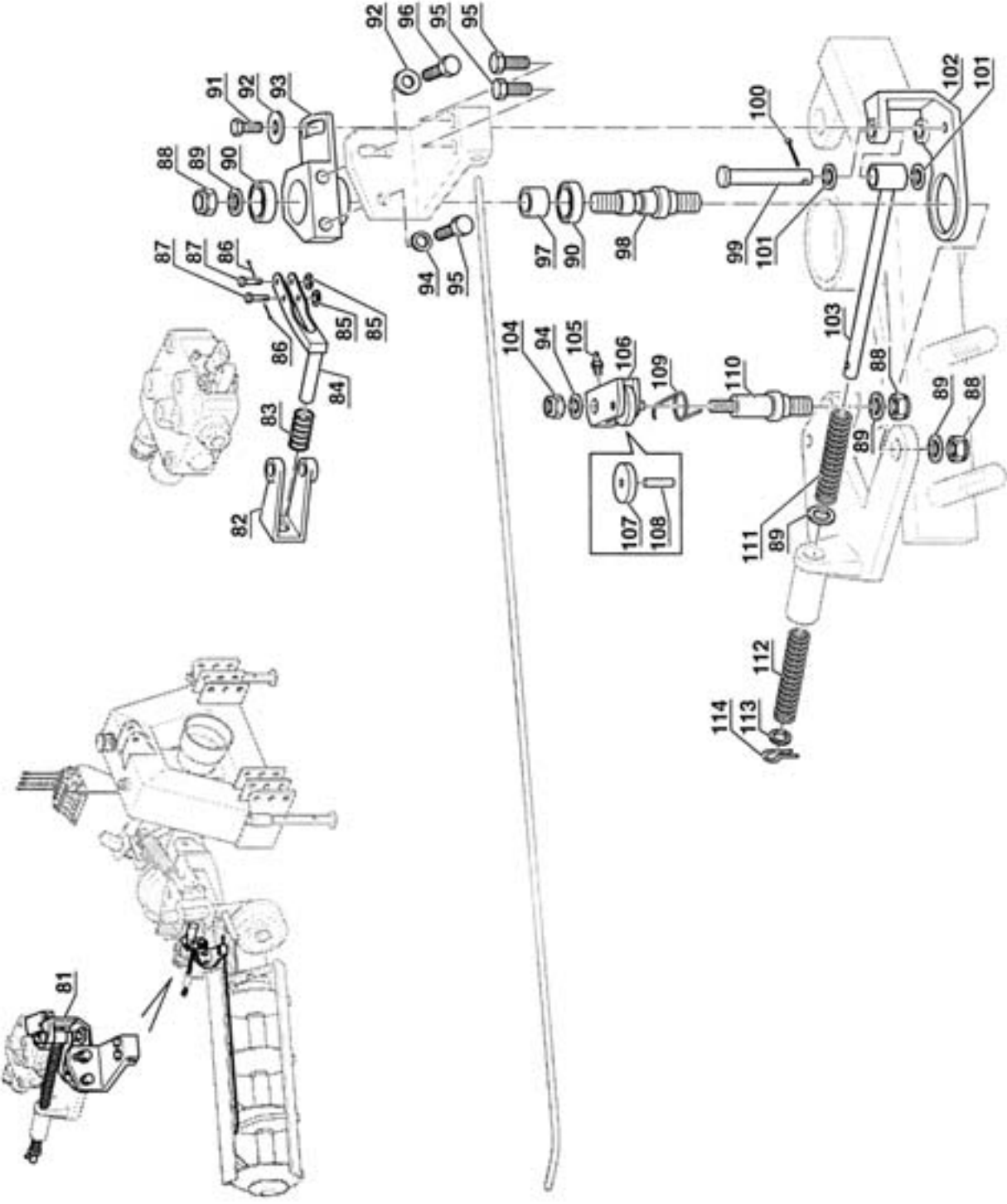
FRAME PARTS

| <u>REF. #</u> | <u>PART NO.</u> | <u>DESCRIPTION</u> |
|---------------|-----------------|------------------------------------|
| 1 | 6206-2RS | Bearing 30 x 62 x 16 - RS |
| 2 | M2RONP1020 | Flat Washer D20 |
| 3 | M2DEA01M20 | Lock Nut M20 |
| 4 | M40101C062 | Dust Cap D62 |
| 5 | M40101R310 | Wheel 310 x 100 + Center Rib |
| 6 | 0101511 | Spacer |
| 7 | 0601087 | Wheel Support |
| 8 | M2VSDCA010 | Square Bolt M16 x 18 - 41 x 78 |
| 9 | M2RONP1016 | Flat Washer D16 |
| 10 | M2DEN01M16 | Nut M16 |
| 11 | M40101R253 | Wheel 250 x 100 |
| 12 | 0144086 | Wheel Support |
| 13 | M2RONP1010 | Flat Washer D10 |
| 14 | M2COP00325 | Cotter Pin 3 x 25 |
| 15 | 0103504 | Eccentric Pin Plug |
| 16 | 0103521 | Eccentric Pin Spring |
| 17 | 0103514 | Eccentric Pin |
| 18 | 0501069 | Head Mtn Bracket |
| 19 | M2RONPIZ08 | Flat Washer D8 |
| 20 | M2TEZ08020 | Bolt 8 x 20 |
| 21 | 0501073 | Support Bracket |
| 22 | M6B3038030 | Bushing 30 x 38 x 30 |
| 23 | 0601062 | Head Support Bracket |
| 24 | 2501501 | Boom Fixing Pin |
| 25 | M2INGM8125 | Greasing Nipple M8 x 1.25 |
| 26 | 0601064 | Left Boom Arm |
| 27 | 0601063 | Right Boom Arm |
| 28 | M2RONP1027 | Flat Washer D27 |
| 29 | M2DEAF1M27 | Lock Nut M27 x 2 |
| 30 | 0101062 | Top Link Pin |
| 31 | 0101506 | Bolt special M30 x 213 |
| 32 | 6306-2RS | Bearing 30 x 72 x 19 - RS |
| 33 | 0101507 | Spacer |
| 34 | 0101060 | Distributor Carrier Boom HC valve |
| 34A | 0501060 | Distributor Carrier Boom VPS Valve |
| 35 | M2RONP1030 | Flat Washer D30 |
| 36 | M2DESF2M30 | Nut M30 x 2 5588 |
| 37 | M2DENF3M30 | Nut M30 x 2 5589 |
| 38 | 0102503 | Knurled Washer |
| 39 | M2DENZ1M20 | Nut M20 5587 |
| 40 | M4S3601063 | Lower Link Pin |

FRAME PARTS

| <u>REF. #</u> | <u>PART NO.</u> | <u>DESCRIPTION</u> |
|---------------|-----------------|-------------------------|
| 41 | M2COPLA004 | Hair Pin D4 |
| 42 | M2COPMO008 | Snap Pin D8 |
| 43 | 0501056 | Jackstand |
| 44 | M2COP00650 | Pin 6 x 50 |
| 45 | M2TEZ08045 | Bolt 8 x 45 |
| 46 | M2TEZ10030 | Bolt 10 x 30 |
| 47 | M8TQ300 | Square Plug, Rubber |
| 48 | M8CF001 | PTO Shield 150 x 210 |
| 49 | M5RB00001 | Bonded Washer 1" |
| 50 | M50603591 | Drain Plug 1" |
| 51 | M5TM00012 | Fill Plug 1/2" |
| 52 | M5RB00012 | Bonded Washer 1/2" |
| 53 | M50103504 | Oil Level Plug |
| 54 | 0601061 | Frame & Reservoir |
| 55 | M2TEZ08035 | Bolt 8 x 35 |
| 56 | M2DEA01M08 | Lock Nut M8 |
| 57 | M5CDC2200 | Collar, Steel |
| 58 | M5CDE2200 | Collar 1/2" Hose Holder |

HYDRAULIC SWING PARTS DRAWING

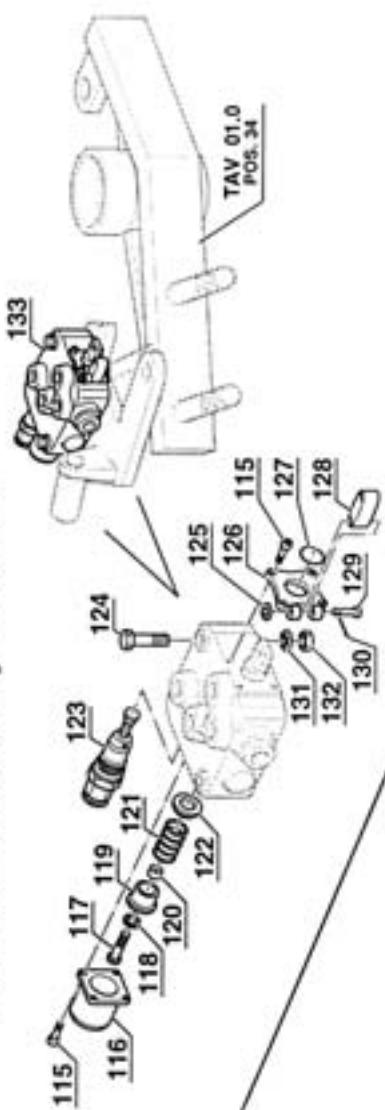


HYDRAULIC SWING PARTS

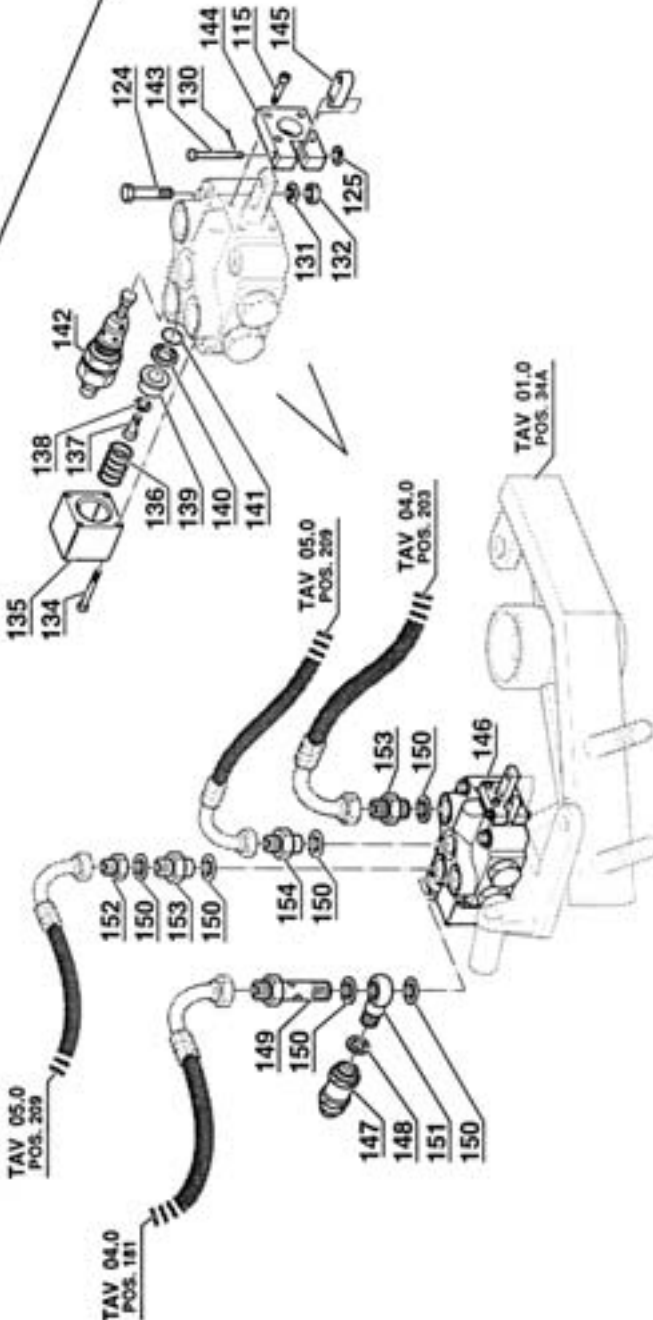
| <u>REF. #</u> | <u>PART NO.</u> | <u>DESCRIPTION</u> |
|---------------|-----------------|---------------------------|
| 81 | 0103002 | Complete Rod Regulator |
| 82 | 0103513 | Bracket |
| 83 | 0103520 | Thread Spring 3 x 29 |
| 84 | 0103512 | Fork |
| 85 | M2ROUND1006 | Washer Flat D6 |
| 86 | M2COP00220 | Cotter Pin 2 x 20 |
| 87 | 0103518 | Pin For Fork |
| 88 | M2DEA01M14 | Lock Nut M14 |
| 89 | M2RONP1Z14 | Flat Washer D14 |
| 90 | 6202-2RS | Bearing 15 x 35 x 11 - RS |
| 91 | M2TEZ12040 | Bolt 12 x 40 |
| 92 | 0101514 | Washer D12.5 x 6 |
| 93 | 0103510 | Support |
| 94 | M2RONP1Z12 | Flat Washer D12 |
| 95 | M2TEZ12025 | Bolt 12 x 25 |
| 96 | M2TEZ12030 | Bolt 12 x 30 |
| 97 | 0103507 | Spacer |
| 98 | 0103508 | Stud Special |
| 99 | 0103517 | Tie Rod Coupling Pin |
| 100 | M2COP00325 | Cotter Pin 3 x 25 |
| 101 | M2RONP1010 | Flat Washer D10 |
| 102 | 0103516 | Adjustment Staff |
| 103 | 0103051 | Tie Rod |
| 104 | M2DEAF1M12 | Lock Nut M12 |
| 105 | M2INGM8125 | Grease Nipple 8 x 1.25 |
| 106 | 0103001 | Complete Ratchet |
| 107 | 0103515 | Roller |
| 108 | M2SSP10045 | Spirol Pin 10 x 45 |
| 109 | 0103525 | Ratchet Retainer Spring |
| 110 | 0103511 | Pin |
| 111 | 0103522 | Spring 2mm |
| 112 | 0103524 | Spring 3mm |
| 113 | M2RONP1Z15 | Flat Washer 14 x 42 |
| 114 | M2COPLA05B | Hair Pin D5 |

SWING VALVE PARTS DRAWING

HC - Valve Currently Installed



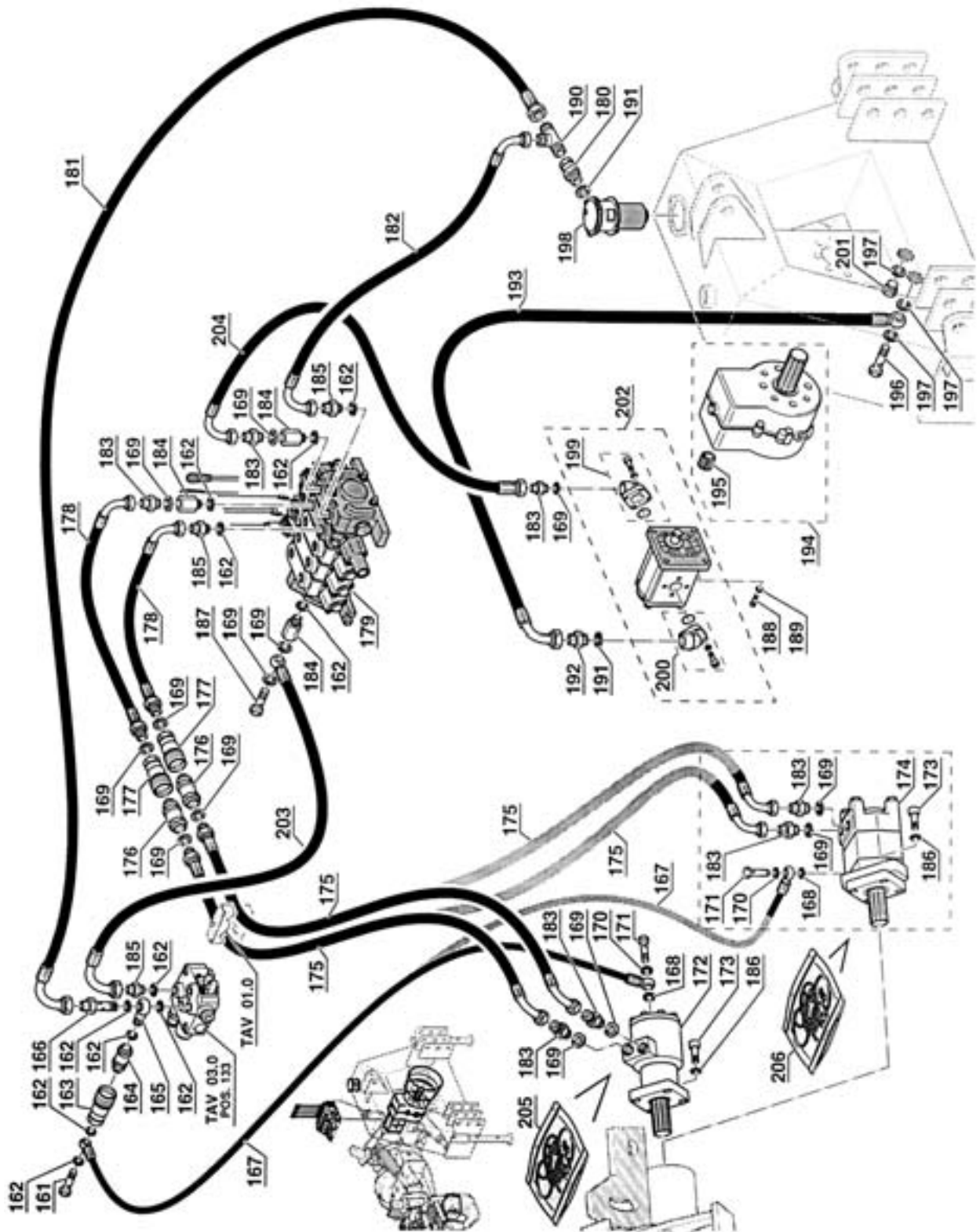
VPS Valve Not Used



SWING VALVE PARTS

| <u>REF. #</u> | <u>PART NO.</u> | <u>DESCRIPTION</u> |
|---------------|-----------------|----------------------------------|
| 115 | M2TCE05016 | Allen Bolt 5 x 16 |
| 116 | M50103011 | Distributor Cap |
| 117 | M50103014 | Allen Bolt 5 x 18 |
| 118 | M50103013 | Flat Washer D5 |
| 119 | M50103017 | Outer Spring Disc |
| 120 | M50103012 | Spacer |
| 121 | M50103016 | Return Spring |
| 122 | M50103015 | Inner Spring Disc |
| 123 | M5VMD2100 | Relief Valve |
| 124 | M2TEZ08070 | Bolt 8 x 70 |
| 125 | M2RONP1006 | Flat Washer D6 |
| 126 | M50103018 | Distributor Flange |
| 127 | M50103019 | OR Distributor (Requires 3 each) |
| 128 | M50103023 | Link |
| 129 | 0103519 | Pin For Flange |
| 130 | M2COP00220 | Pin 2 x 20 |
| 131 | M2MDE18091 | Washer 18 x 9.2 x 1 |
| 132 | M2DEA01M08 | Lock Nut M8 |
| 133 | M50103001 | Remote Valve HC |
| 134 | M2TCE05045 | Bolt M5 x 45 |
| 135 | M5ED00131 | Distributor Cap |
| 136 | M50503013 | Return Spring |
| 137 | M2TCE08015 | Bolt M8 x 15 |
| 138 | 0603511 | Washer D8 |
| 139 | M50503014 | Spring Disc |
| 140 | M50503018 | Guide Ring |
| 141 | M50403019 | OR Distributor |
| 142 | M50503011 | Relief Valve |
| 143 | 0603519 | Pin For Flange |
| 144 | M50603018 | Distributor Flange |
| 145 | M50603023 | Link |
| 146 | M50603001 | Remote Valve VPS |
| 147 | M5IR31M38 | Quick Coupler 3/8 Male |
| 148 | M5RB00038 | Bonded Washer |
| 149 | M5BUCA212 | Banjo Bulkhead 1/2 |
| 150 | M5RB00012 | Bonded Washer |
| 151 | M5ROF1M42 | Banjo Nipple 1/2 x 3/8 M |
| 152 | M5R100009 | Reducer 3/8 M x 1/2 F |
| 153 | M50103505 | Nipples 1/2 M-M |
| 154 | M50103508 | Reducer 1/2 M x 3/8 M |

HYDRAULIC PUMP & POWER DISC PLUMBING



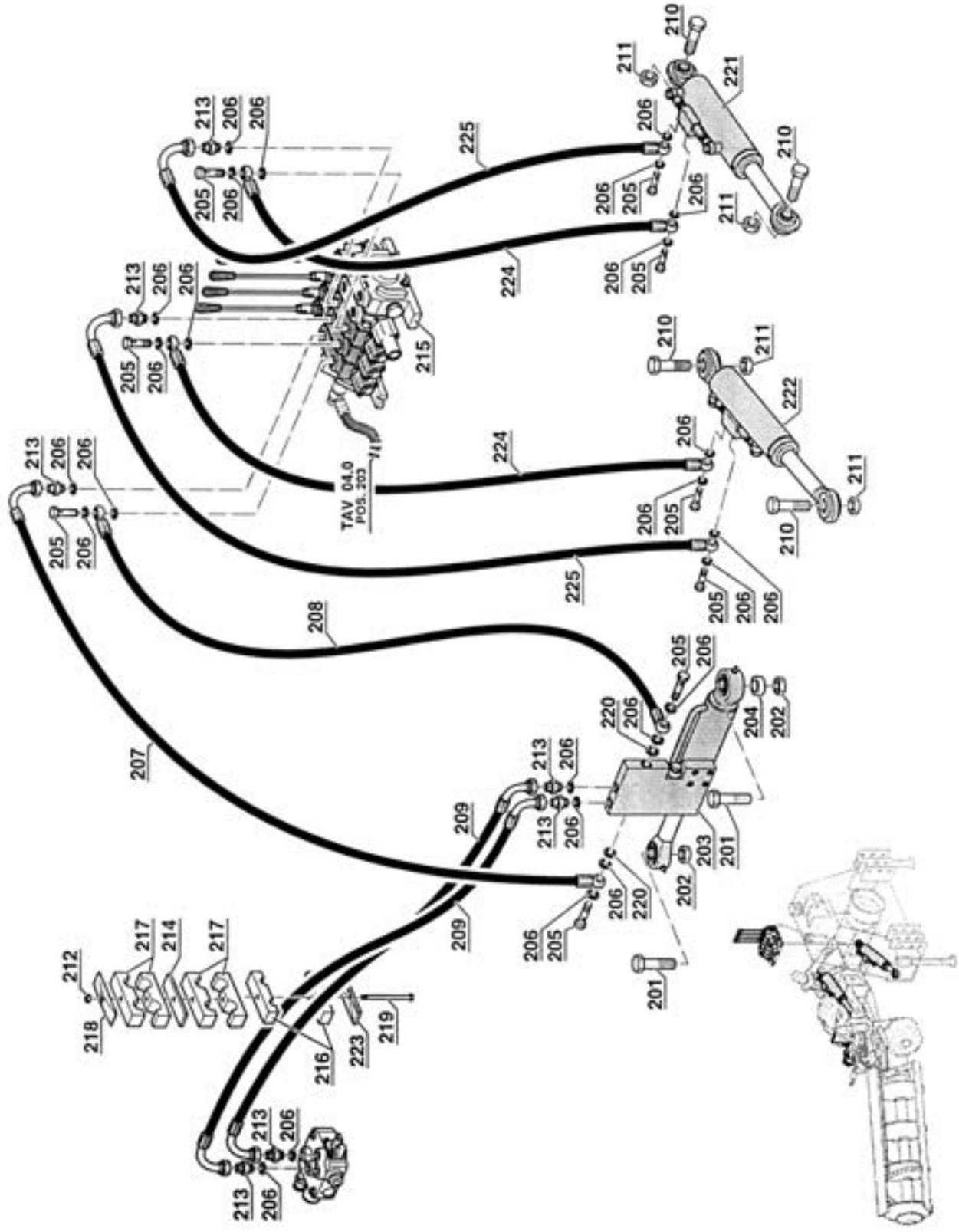
HYDRAULIC PUMP & POWER DISC PLUMB- ING

| <u>REF. #</u> | <u>PART NO.</u> | <u>DESCRIPTION</u> |
|---------------|-----------------|------------------------|
| 161 | M5BUCA038 | Banjo Bolt 3/8 |
| 162 | M5RB00038 | Bonded Washer |
| 163 | M5IR31F38 | Quick Coupler 3/8 F |
| 164 | M5IR31M38 | Quick Coupler 3/8 M |
| 165 | M5ROF1M40 | Banjo Nipple |
| 166 | M5BUCA338 | Banjo Bulkhead |
| 167 | 0505561 | Hose 1/4 x L-700 Banjo |
| 168 | M5RA00015 | Washer, Aluminum |
| 169 | M5RB00012 | Bonded Washer |
| 170 | M5RB00014 | Bonded Washer |
| 171 | M5BUCA015 | Banjo Bolt 1/4 |
| 172 | M5MOID008 | Orbital Motor ARS/250 |
| 173 | M2TCE10035 | Bolt 10 x 35 |
| 174 | M5MOID009 | Orbital Motor EPMS/250 |
| 175 | 0616516 | Hose 1/2 x L-1100 |
| 176 | M5IR31M12 | Quick Coupler 1/2 M |
| 177 | M5IR31F12 | Quick Coupler 1/2 F |
| 178 | 0607501 | Hose 1/2 x L-3250 |
| 179 | M5DE00022 | Control Valve |
| 180 | M5RC35GMF | Reducer 3/4 M x 1/2 F |
| 181 | 0204504 | Hose 1/2 x L-1900 |
| 182 | 0606521 | Hose 1/2 x L-2000 |
| 183 | M50103505 | Nipple 1/2 M-M |
| 184 | M5R100009 | Reducer 3/8 M x 1/2 F |
| 185 | M50103508 | Reducer 1/2 M x 3/8 M |
| 186 | M2RONGRP10 | Lock Washer |
| 187 | M5BUCA012 | Banjo Bolt 1/2 |
| 188 | M2TCE08025 | Bolt 8 x 25 |
| 189 | M2RONP1Z08 | Flat Washer D8 |
| 190 | M50203502 | T-Coupling 1/2 |
| 191 | M5RB00034 | Bonded Washer |
| 192 | M5N100034 | Nipple 3/4 M-M |
| 193 | 0606501 | Hose 3/4 x L-600 |
| 194 | M50503304 | Gearbox |
| 195 | M50503400 | Half Coupling, Splined |
| 196 | M5BUCA001 | Banjo Bolt 1" |
| 197 | M5RB00001 | Bonded Washer |
| 198 | M50103304 | Oil Filter |

HYDRAULIC PUMP & POWER DISC PLUMBING

| <u>REF. #</u> | <u>PART NO.</u> | <u>DESCRIPTION</u> |
|---------------|-----------------|---------------------------|
| 199 | M5FL90012 | Flange 90° 1/2 |
| 200 | M5FL90034 | Flange 90° 3/4 |
| 201 | M50603591 | Blind Plug 1" |
| 202 | M50503150 | Pump Complete with Flange |
| 203 | 0604502 | Hose 1/2 x L-3800 |
| 204 | 0504521 | Hose 1/2 x L-2400 |
| 205 | M5EM00003 | ARS Gasket Kit |
| 206 | M5EM00001 | EPMS Gasket Kit |

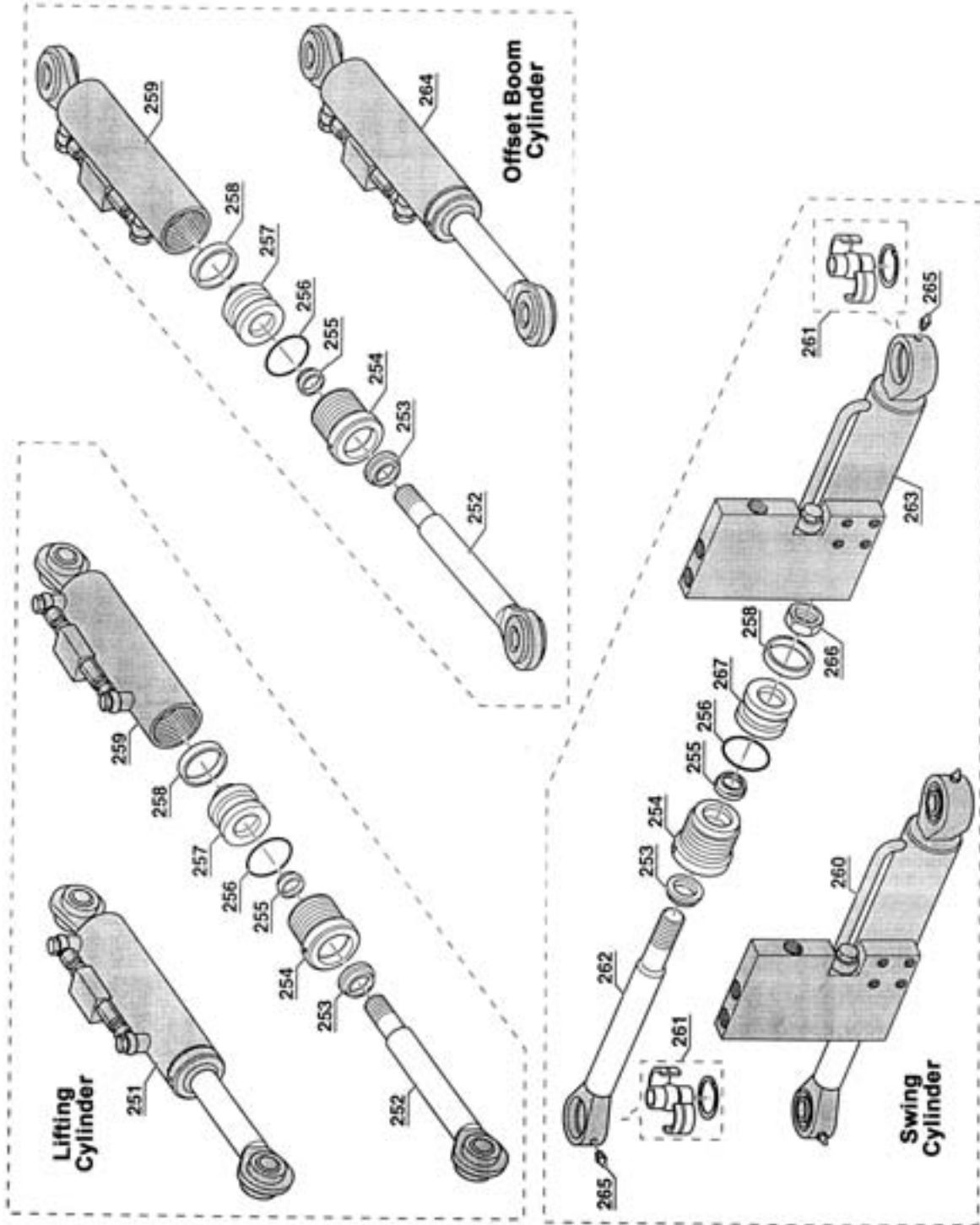
SWING, OFFSET & LIFTING HYDRAULIC PLUMBING CYLINDER



SWING, OFFSET & LIFTING HYDRAULIC PLUMBING CYLINDER

| <u>REF. #</u> | <u>PART NO.</u> | <u>DESCRIPTION</u> |
|---------------|-----------------|--------------------------------|
| 201 | 10101505 | Cylinder Fixing Bolt M18 x 1.5 |
| 202 | M2DEZF2M18 | Nut D18 x 1.5 |
| 203 | 0103559 | Swing Cylinder |
| 204 | 0103568 | Spacer |
| 205 | M5BUCA038 | Banjo Bolt |
| 206 | M5RB00038 | Bonded Washer |
| 207 | 0604513 | Hose 3/8 x L-3450 |
| 208 | 0604512 | Hose 3/8 x L-3400 |
| 209 | 0104509 | Hose 3/8 x L-600 |
| 210 | M2TE020090 | Bolt M20 x 90 |
| 211 | M2DEA03M20 | Lock Nut M20 |
| 212 | M2DEA01M08 | Lock Nut M8 |
| 213 | M50103506 | Nipple 3/8 M-M |
| 214 | M5CDP2200 | Plate |
| 215 | M5DE00022 | Control Valve |
| 216 | M5CDE1800 | Collar |
| 217 | M5CDE2200 | Collar |
| 218 | M5CDC2200 | Collar Plate |
| 219 | M2TEZ08130 | Bolt M8 x 130 |
| 220 | M50103604 | Washer 3/8 |
| 221 | 0203515 | Head Lifting Cylinder |
| 222 | 0203515 | Offset Boom Cylinder |
| 223 | M5CDC1800 | Collar Plate |
| 224 | 0604514 | Hose 1/4 x L-2800 |
| 225 | 0604515 | Hose 1/4 x L-2800 |

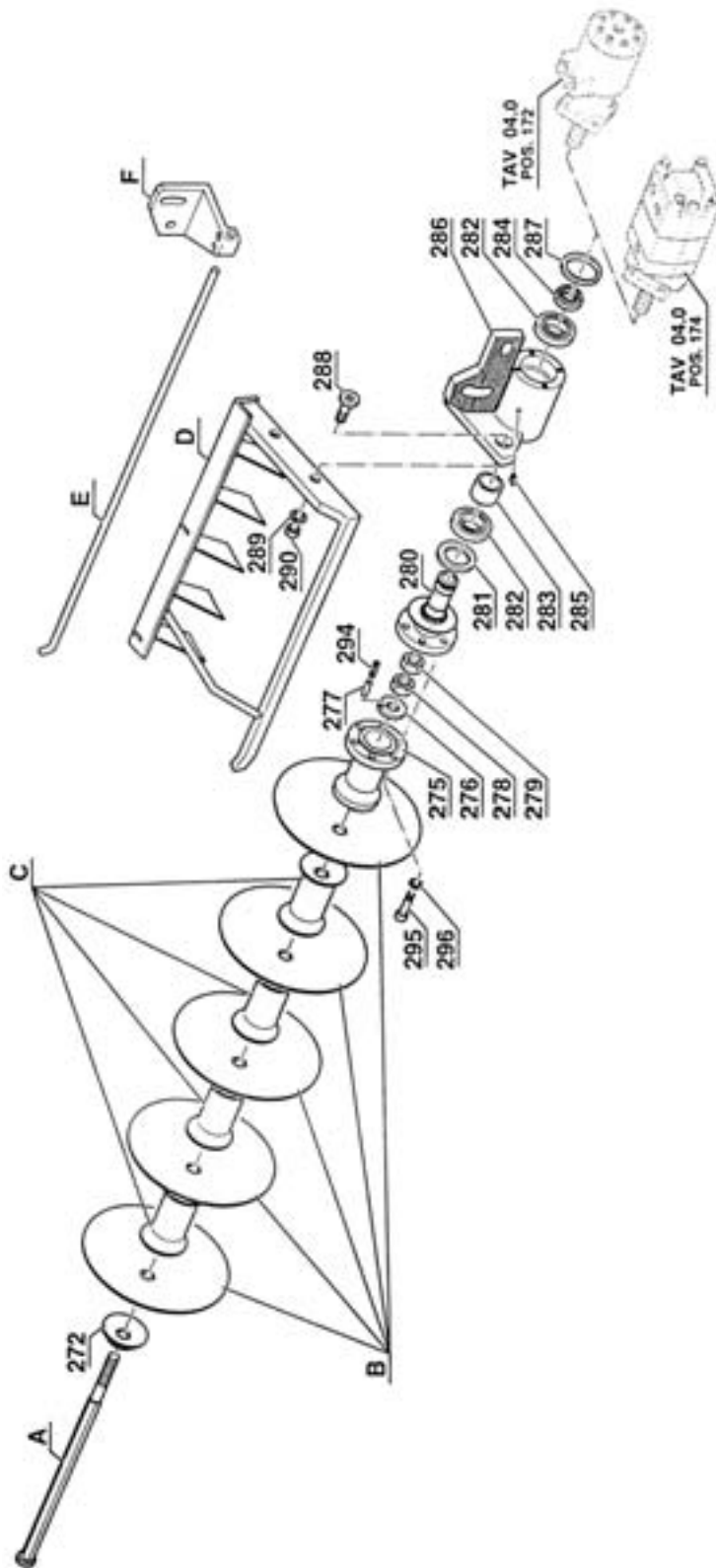
HYDRAULIC CYLINDER



HYDRAULIC CYLINDER

| <u>REF. #</u> | <u>PART NO.</u> | <u>DESCRIPTION</u> |
|---------------|-----------------|-----------------------|
| 251 | 0203515 | Head Lifting Cylinder |
| 252 | M50203223 | Head Cylinder Rod |
| 253 | M50103213 | Ring |
| 254 | M50103212 | Sleeve |
| 255 | M50103211 | Ring |
| 256 | M50103218 | OR Sleeve |
| 257 | M50103217 | Piston |
| 258 | M50103216 | Ring |
| 259 | M50203222 | Head Cylinder Pipe |
| 260 | 0103559 | Swing Cylinder |
| 261 | M50103256 | Spherical Joint Kit |
| 262 | M50103254 | Cylinder Rod |
| 263 | M50103257 | Cylinder Pipe |
| 264 | 0203515 | Offset Boom Cylinder |
| 265 | M2INGM8125 | Greasing Nipple |
| 266 | M2DENF3M20 | Nut |
| 267 | M50103259 | Piston |

POWER DISC

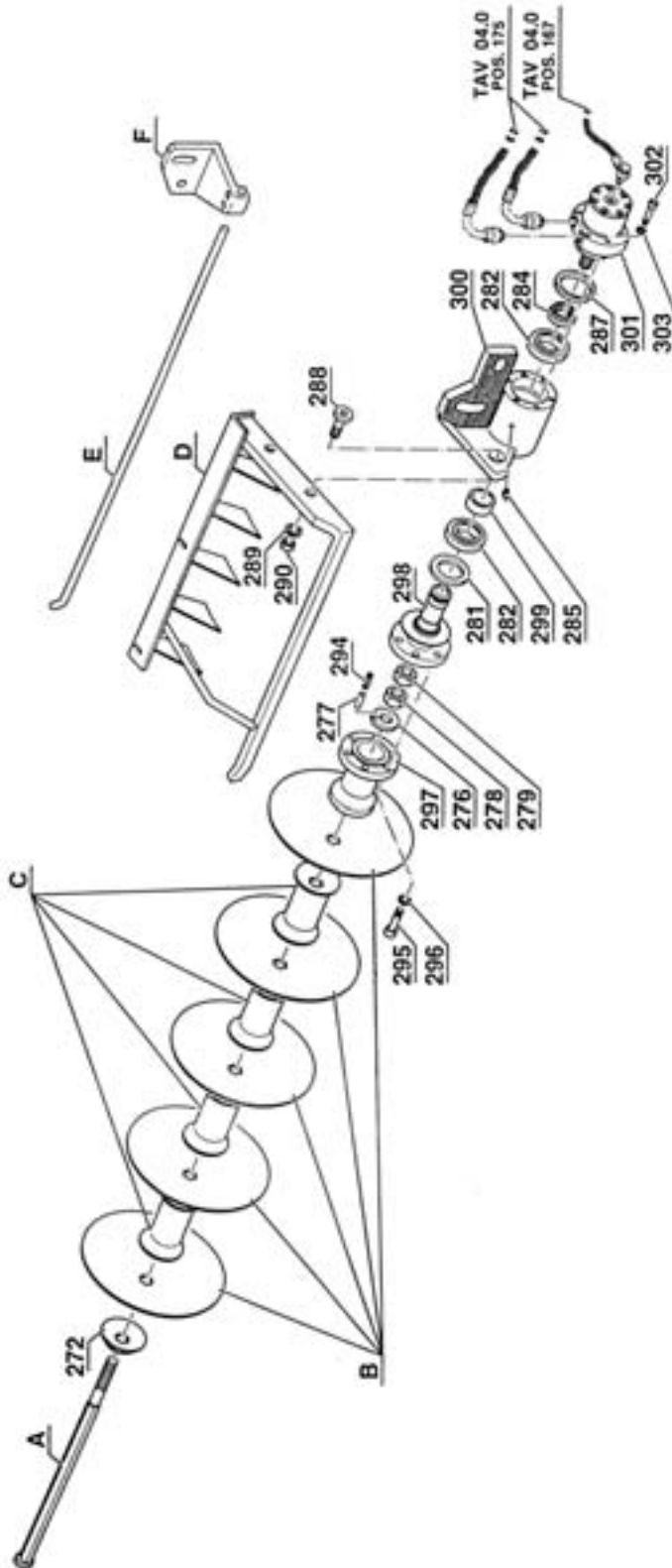


| | | | | | | | | | | | |
|--------------------------|----------------------------|----------------------------|----------------------------|----------------------------|----------------------------|----------------------------|----------------------------|----------------------------|----------------------------|----------------------------|----------------------------|
| DESCRIZIONE DISCHIERA | 2D 0350/170 M10T2116 | 3D 0350/170 M10T2108 | 4D 0350/170 M10T2109 | 5D 0350/170 M10T2120 | 3D 0300/130 M10T2122 | 4D 0300/130 M10T2111 | 5D 0300/130 M10T2115 | 6D 0300/130 M10T2121 | 4D 0250/100 M10T212B | 5D 0250/100 M10T2113 | 6D 0250/100 M10T2110 |
| A | E36 L=322 0545053 | E36 L=495 0145053 | E36 L=470 0145054 | E36 L=845 0545054 | E36 L=405 0145055 | E36 L=435 0145056 | E36 L=470 0145054 | E36 L=800 0545057 | E36 L=480 0545058 | E36 L=560 0545055 | E36 L=662 0545052 |
| B | 0250 L E37 M401DE351L | 0350 L E37 M401DE351L | 0350 L E37 M401DE351L | 0350 L E37 M401DE351L | 0300 L E37 M401DE301L | 0300 L E37 M401DE301L | 0300 L E37 M401DE301L | 0300 L E37 M401DE301L | 0250 L E37 M401DE250L | 0250 L E37 M401DE250L | 0250 L E37 M401DE250L |
| C | Mod. 170 E37 M4SLGA1701 | Mod. 170 E37 M4SLGA1701 | Mod. 170 E37 M4SLGA1701 | Mod. 170 E37 M4SLGA1701 | Mod. 127 E37 M4SLGA1271 | Mod. 127 E37 M4SLGA1271 | Mod. 127 E37 M4SLGA1271 | Mod. 127 E37 M4SLGA1271 | Mod. 100 E37 M4SLGA1001 | Mod. 100 E37 M4SLGA1001 | Mod. 100 E37 M4SLGA1001 |
| D | 0545073 | 0145071 | 0145072 | 0145075 | 0545074 | 0545075 | 0145073 | 0545076 | 0545077 | 0545078 | 0145074 |
| E | 09 L=500 0245562 | 09 L=600 0145563 | 09 L=850 0145562 | 09 L=1000 0145561 | 09 L=660 0203508 | 09 L=730 0245564 | 09 L=850 0145562 | 09 L=1000 0145561 | 09 L=625 0203513 | 09 L=790 0103501 | 09 L=850 0145562 |
| F | Mod. D-38 0103562 | Mod. D-38 0103562 | Mod. D-38 0103562 | Mod. D-38 0103562 | Mod. D-35 0103509 | Mod. D-35 0103509 | Mod. D-35 0103509 | Mod. D-35 0103509 | Mod. D-35 0103509 | Mod. D-35 0103509 | Mod. D-35 0103509 |

POWER DISC

| <u>REF. #</u> | <u>PART NO.</u> | <u>DESCRIPTION</u> |
|---------------|-----------------|-----------------------------|
| 271 | A | Axle |
| 272 | M4SARF3703 | Disc Holding Washer |
| 273 | B | Disc Blade |
| 274 | C | Spool |
| 275 | 0145061 | Disc Support Spacer |
| 276 | 0145501 | Aligning Washer |
| 277 | M2SEL08016 | Elastic Pin 8 x 16 |
| 278 | M2DESF2M30 | Nut M30 x 2 |
| 279 | M2DEAF1M30 | Lock Nut M30 x 2 |
| 280 | 0145062 | Bearing Holder Spacer |
| 281 | 62X90X10 | Oil Seal |
| 282 | 6210 | Bearing 50 x 90 x 20 |
| 283 | 0145502 | Spacer |
| 284 | M2GHA05015 | Self-Locking Nut 50 x 1.5 |
| 285 | M2INGM8125 | Greasing Nipple 8 x 1.25 |
| 286 | 0145063 | Bearing Housing |
| 287 | 0145503 | Motor Alignment Ring |
| 288 | M2TSE16050 | Bolt M16 x 50 |
| 289 | M2RONGRP16 | Lock Washer |
| 290 | M2DEN01M16 | Nut M16 |
| 291 | D | Plough-Rake Ground Leveller |
| 292 | E | Rod |
| 293 | F | Rod Staff |
| 294 | M2SSP05016 | Spirol Plug 5 x 16 |
| 295 | M2TCE10025 | Bolt 10 x 25 |
| 296 | M2RONGRP10 | Lock Washer M10 |
| 297 | 0145504 | Disc Support Spacer |
| 298 | 0145085 | Bearing Holder Spacer |
| 299 | 0145505 | Distance Piece |
| 300 | 0145064 | Plough-Rake Support |
| 301 | M5MOID014 | Orbital Motor |
| 302 | M2TCE08040 | Screw |
| 303 | M2RONGR008 | Grower Washer |

POWER DISC OPTIONAL MOTOR

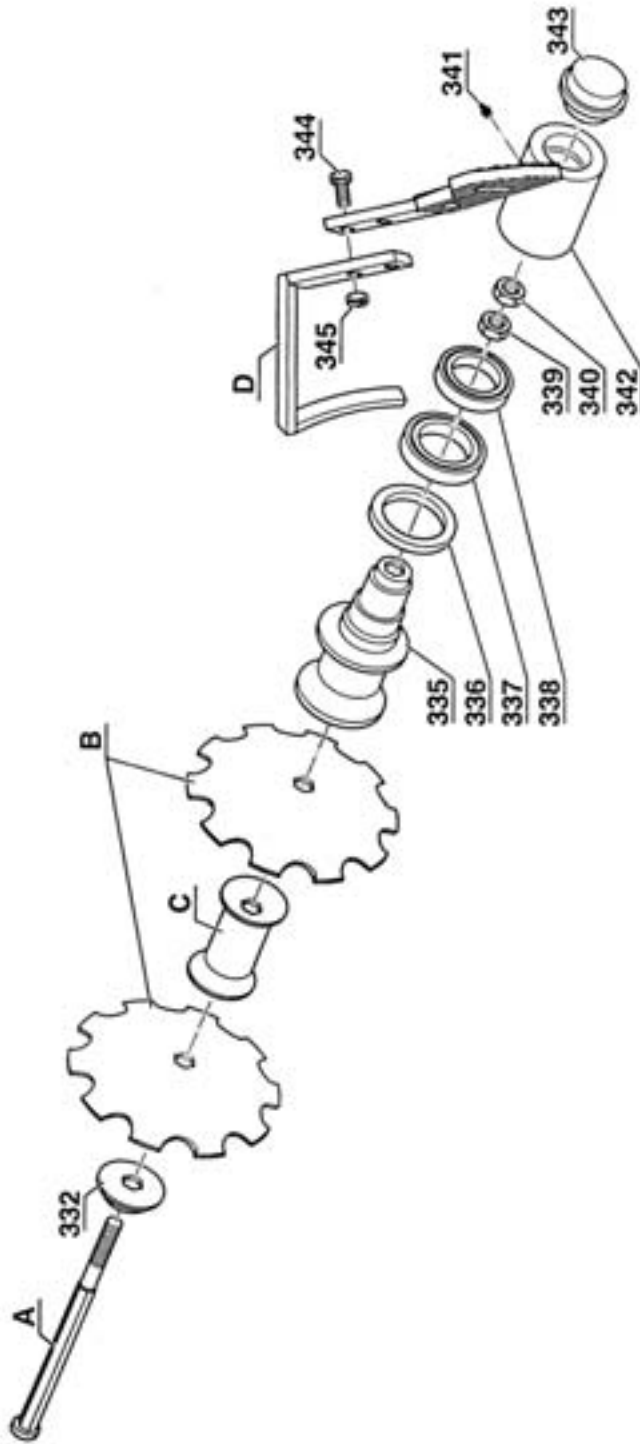


| DESCRIZIONE DISCHERA | 2D 0350/170 M1OT3116 | 3D 0350/170 M1OT3120 | 4D 0350/170 M1OT3109 | 4D 0350/170 M1OT3108 | 5D 0350/170 M1OT3120 | 6D 0300/130 M1OT3111 | 6D 0300/130 M1OT3115 | 6D 0300/130 M1OT3121 | 4D 0250/100 M1OT3128 | 5D 0250/100 M1OT3113 | 6D 0250/100 M1OT3110 |
|-------------------------|----------------------------|----------------------------|----------------------------|----------------------------|----------------------------|----------------------------|----------------------------|----------------------------|----------------------------|----------------------------|----------------------------|
| A | E36 L=470 0245056 | E36 L=470 0245057 | E36 L=445 0245061 | E36 L=445 0245061 | E36 L=400 0245058 | E36 L=510 0245060 | E36 L=645 0245061 | E36 L=775 0245062 | E36 L=435 0245063 | E36 L=535 0245064 | E36 L=437 0245065 |
| B | 0350 L E37 M401DE351L | 0350 L E37 M401DE351L | 0350 L E37 M401DE351L | 0350 L E37 M401DE351L | 0350 L E37 M401DE351L | 0300 L E37 M401DE301L | 0300 L E37 M401DE301L | 0300 L E37 M401DE301L | 0250 L E37 M401DE250L | 0250 L E37 M401DE250L | 0250 L E37 M401DE250L |
| C | Mod. 170 E37 M4SLGA1701 | Mod. 170 E37 M4SLGA1701 | Mod. 170 E37 M4SLGA1701 | Mod. 170 E37 M4SLGA1701 | Mod. 170 E37 M4SLGA1701 | Mod. 127 E37 M4SLGA1271 | Mod. 127 E37 M4SLGA1271 | Mod. 127 E37 M4SLGA1271 | Mod. 100 E37 M4SLGA1001 | Mod. 100 E37 M4SLGA1001 | Mod. 100 E37 M4SLGA1001 |
| D | 0245071 | 0245072 | 0245073 | 0245073 | 0245074 | 0245075 | 0245077 | 0245078 | 0245079 | 0245080 | 0245081 |
| E | 09 L=450 0245561 | 09 L=425 0203513 | 09 L=810 0245565 | 09 L=810 0245565 | 09 L=670 0245566 | 09 L=550 0245563 | 09 L=810 0245565 | 09 L=920 0103561 | 09 L=450 0203508 | 09 L=480 0145563 | 09 L=810 0245565 |
| F | Mod. D-38 0103562 | Mod. D-38 0103562 | Mod. D-38 0103562 | Mod. D-38 0103562 | Mod. D-38 0103562 | Mod. D-35 0103509 | Mod. D-35 0103509 | Mod. D-35 0103509 | Mod. D-35 0103509 | Mod. D-35 0103509 | Mod. D-35 0103509 |

POWER DISC OPTIONAL MOTOR

| <u>REF. #</u> | <u>PART NO.</u> | <u>DESCRIPTION</u> |
|---------------|-----------------|-----------------------------|
| 271 | A | Plough-Rake Pin |
| 272 | M4SARF3703 | Disc Holding Washer |
| 273 | B | Plough-Rake Disc |
| 274 | C | Distance Piece |
| 276 | 0145501 | Aligning Washer |
| 277 | M2SEL08016 | Elastic Pin |
| 278 | M2DESF2M30 | Nut |
| 279 | M2DEAF1M30 | Nut |
| 281 | M6A6209010 | Seal Ring |
| 282 | M6C6210000 | Bearing |
| 284 | M2GHA05015 | Self-Locking Nut |
| 285 | M2INGM8125 | Greasing Nipple |
| 287 | 0145503 | Motor Alignment Ring |
| 288 | M2TSE16050 | Screw |
| 289 | M2RONGRP16 | Grower Washer |
| 290 | M2DEN01M16 | Nut |
| 291 | D | Plough-Rake Ground Leveller |
| 292 | E | Rod |
| 293 | F | Rod Staff |
| 294 | M2SSP05016 | Spirol Plug |
| 295 | M2TCE10025 | Screw |
| 296 | M2RONGRP10 | Grower Washer |
| 297 | 0145504 | Disc Support Washer |
| 298 | 0145085 | Bearing Holder Spacer |
| 299 | 0145505 | Distance Piece |
| 300 | 0145064 | Plough-Rake Support |
| 301 | M5MOID014 | Orbital Motor |
| 302 | M2TCE08040 | Screw |
| 303 | M2RONGR008 | Grower Washer |

BACKFILL DISC

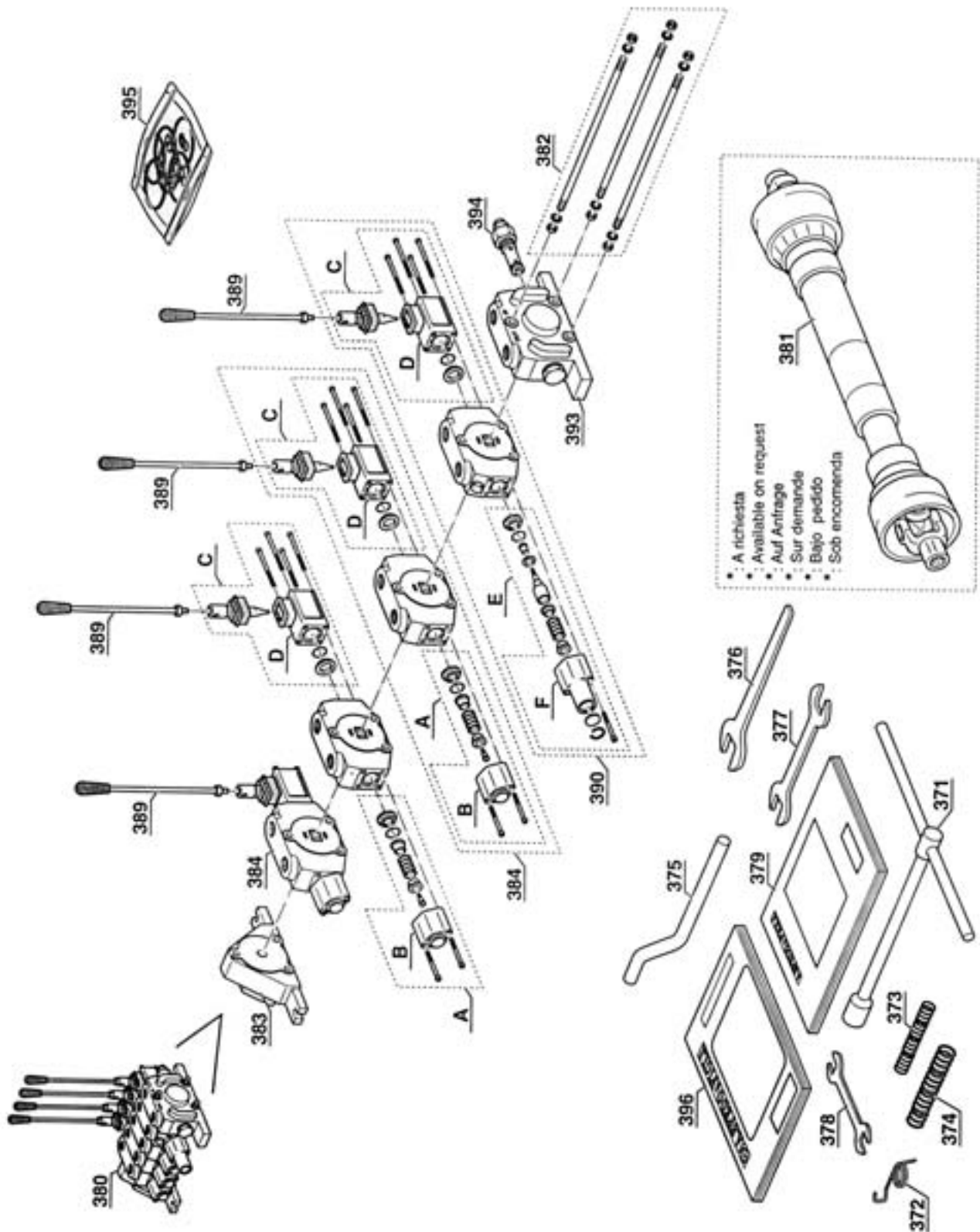


| DESCRIZIONE DISCHIERA | 2D Ø350/170 M10T520B | 3D Ø350/170 M10T5205 | 2D Ø460/200 M10T5201 | 3D Ø460/200 M10T5203 |
|--------------------------|----------------------------|----------------------------|----------------------------|----------------------------|
| A | E36 L=420 0102065 | E36 L=595 0112062 | E36 L=450 0202073 | E36 L=650 0102064 |
| B | Ø350 D E37 M401DE351D | Ø350 D E37 M401DE351D | Ø460 D E37 M401DE461D | Ø460 D E37 M401DE461D |
| C | Mod. 170 E37 M4SLGA1701 | Mod. 170 E37 M4SLGA1701 | Mod. 200 E37 M4SLGA2001 | Mod. 200 E37 M4SLGA2001 |
| D | 0502057 | 0102085 | 0202057 | 0102057 |

BACKFILL DISC

| <u>REF. #</u> | <u>PART NO.</u> | <u>DESCRIPTION</u> |
|---------------|-----------------|-----------------------------|
| 331 | A | Plough-Rake Pin |
| 332 | M4SARF3705 | Disc Holding Washer |
| 333 | B | Plough-Rake Disc |
| 334 | C | Distance Piece |
| 335 | 0102051 | Bearing Holder Spacer |
| 336 | M6A6209010 | Seal Ring |
| 337 | M6C6210000 | Bearing |
| 338 | M6C6307000 | Bearing |
| 339 | M2DESF2M27 | Nut |
| 340 | M2DENF3M27 | Nut |
| 341 | M2INGM8125 | Greasing Nipple |
| 342 | 0102053 | Plough-Rake Support |
| 343 | M40102C080 | Calotte |
| 344 | M2TE014050 | Screw |
| 345 | M2DEN01M14 | Nut |
| 346 | D | Plough-Rake Ground Leveller |

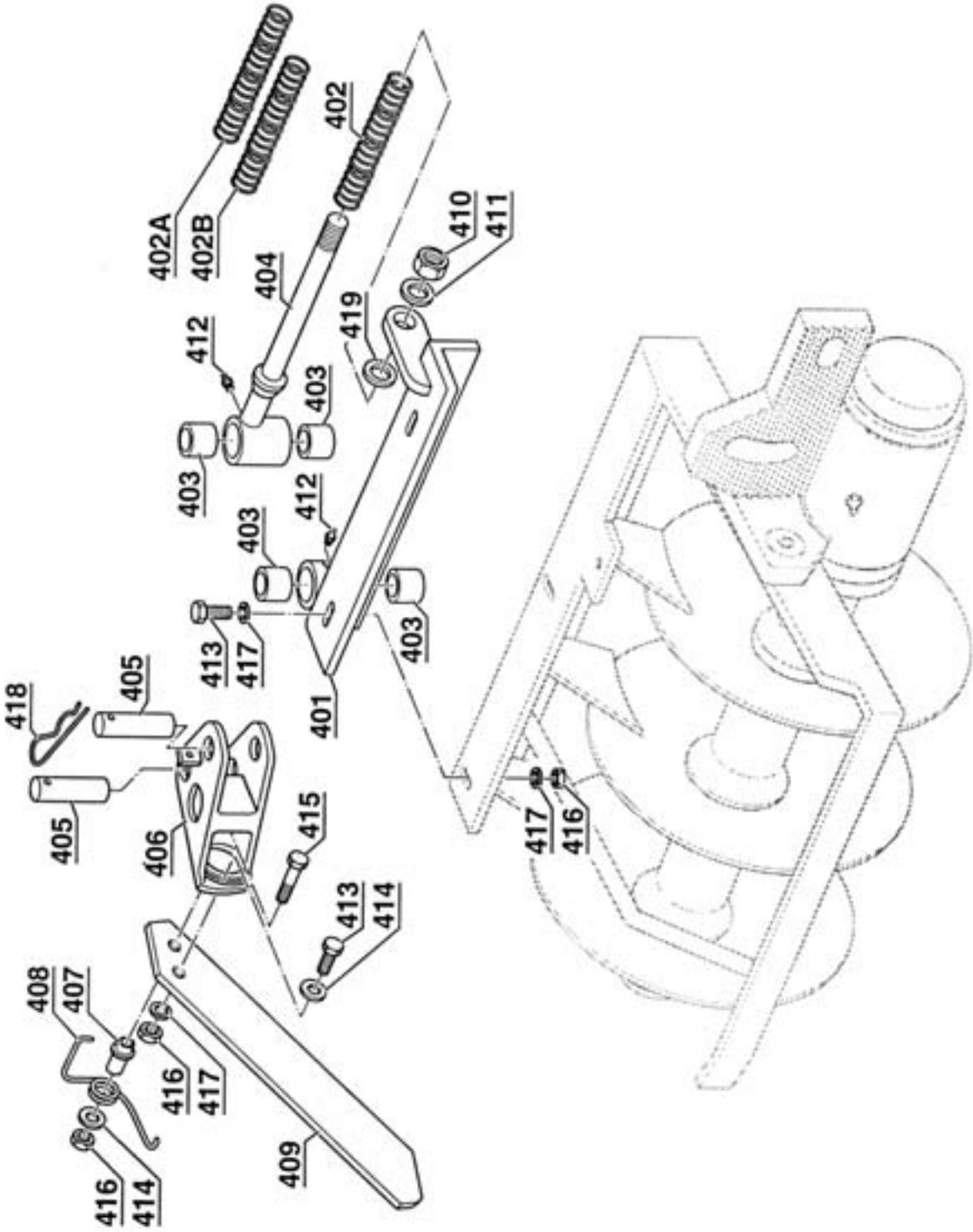
CONTROL VALVE & TOOL KIT



CONTROL VALVE & TOOL KIT

| <u>REF. #</u> | <u>PART NO.</u> | <u>DESCRIPTION</u> |
|---------------|-----------------|----------------------------|
| 371 | M8TRS07 | Wrench |
| 372 | 0103525 | Jack Holder Spring |
| 373 | 0103523 | Thread Spring |
| 374 | 0103526 | Thread Spring |
| 375 | 0201503 | Plug |
| 376 | M8TRS02 | Supplied Wrench |
| 377 | M8TRS04 | Supplied Wrench |
| 378 | M8TRS01 | Supplied Wrench |
| 379 | M9M5000011 | Use & Maintenance Handbook |
| 380 | M5DE00022 | Distributor |
| 381 | M8AC0B2 | Driveline |
| 382 | M5ED00003 | Pull Rod Kit DCV30/4 |
| 383 | M5ED00062 | Output Block DCV30 |
| 384 | M5ED00031 | Cylinder Control Element |
| A | M5ED00015 | Cap Kit DCV30 |
| B | M5ED00102 | Distributor Cap DCV30 |
| C | M5ED00010 | Lever Kit DCV30 |
| D | M5ED00101 | Support For DCV30 |
| 389 | M50103589 | Distributor Lever |
| 390 | M5ED00041 | Engine Control Element |
| E | M5ED00020 | Coupling Kit |
| F | M5ED00103 | Distributor Cap Coupling |
| 393 | M5ED00061 | Input Block DCV30 |
| 394 | M50503021 | Complete Valve |
| 395 | M5ED00024 | Gasket Kit |
| 396 | M9C5032020 | Spare Parts Catalog |

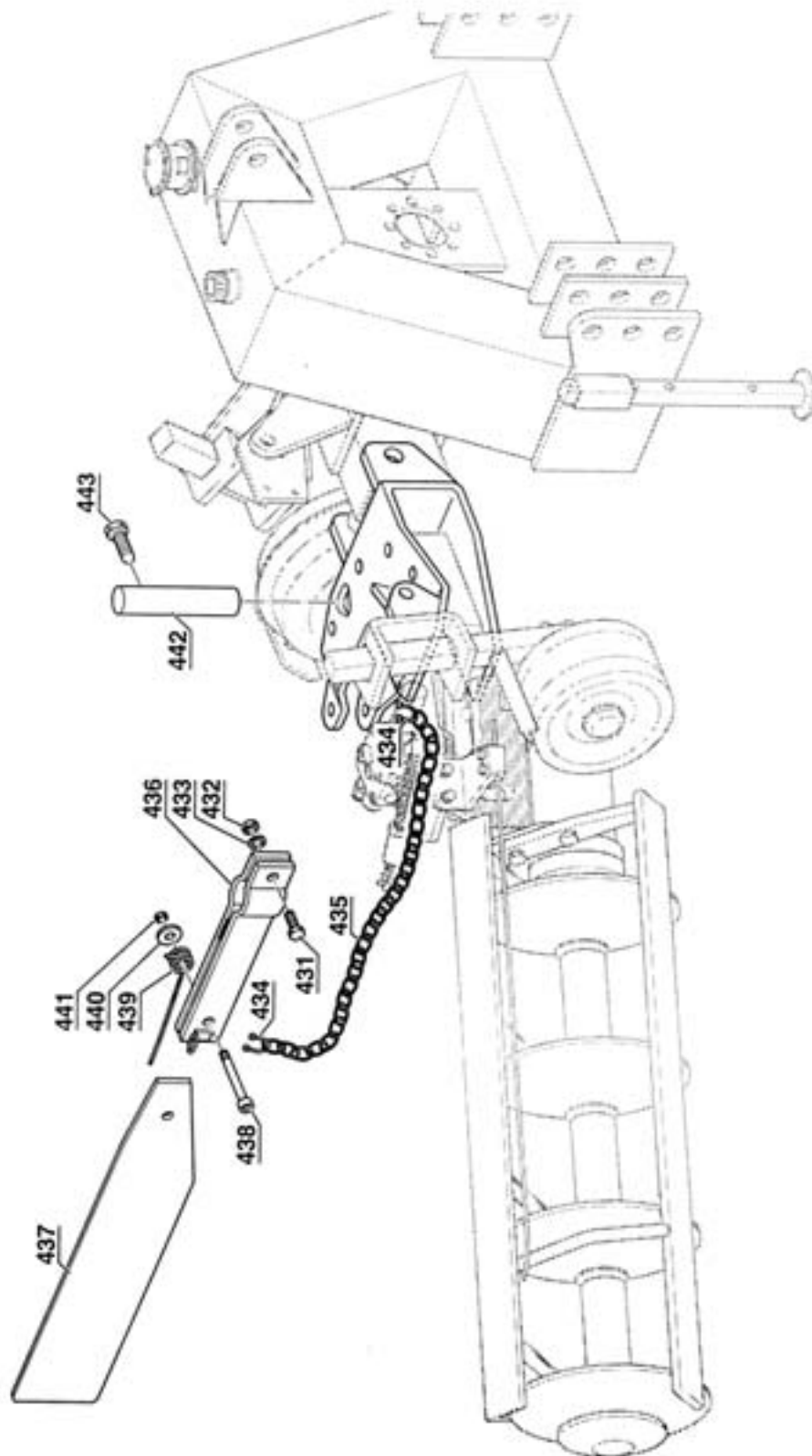
VINE CLEAN-UP BLADE



VINE CLEAN-UP BLADE

| <u>REF. #</u> | <u>PART NO.</u> | <u>DESCRIPTION</u> |
|---------------|-----------------|-----------------------------|
| 401 | 0125051 | Plant Cleaner Blade Coupler |
| 402 | RT00002881 | Blade Spring D.7 |
| 402A | RT00002882 | Blade Spring D.6 |
| 402B | RT00002883 | Blade Spring D.4.5 |
| 403 | M6B2030020 | Bushing 30 x 20 x 20 |
| 404 | 0125053 | Spring Holder Pin |
| 405 | 0125504 | Pin D.20 |
| 406 | 0125503 | Fork |
| 407 | 0125510 | Spring Guide Pin |
| 408 | 0125506 | Spring D.6 |
| 408A | 0125505 | Spring D.7 |
| 409 | 0125511 | Blade 20" |
| 409A | 0125512 | Blade 17 - 75" |
| 410 | M2DEAF1M20 | Lock Nut 20 x 1.5 |
| 411 | M2RONPIA20 | Flat Washer D20 |
| 412 | M2INGM8125 | Greasing Nipple M8 x 1.25 |
| 413 | M2TEZ12040 | Bolt M12 x 40 |
| 414 | 0101514 | Flat Washer M12.5 x 36 x 6 |
| 415 | M2TEZ12070 | Bolt M12 x 70 |
| 416 | M2DEA01M12 | Lock Nut M12 |
| 417 | M2RONP1Z12 | Flat Washer |
| 418 | M2COPLA005 | Pin D.5 |
| 419 | M2RONP1Z20 | Flat Washer |

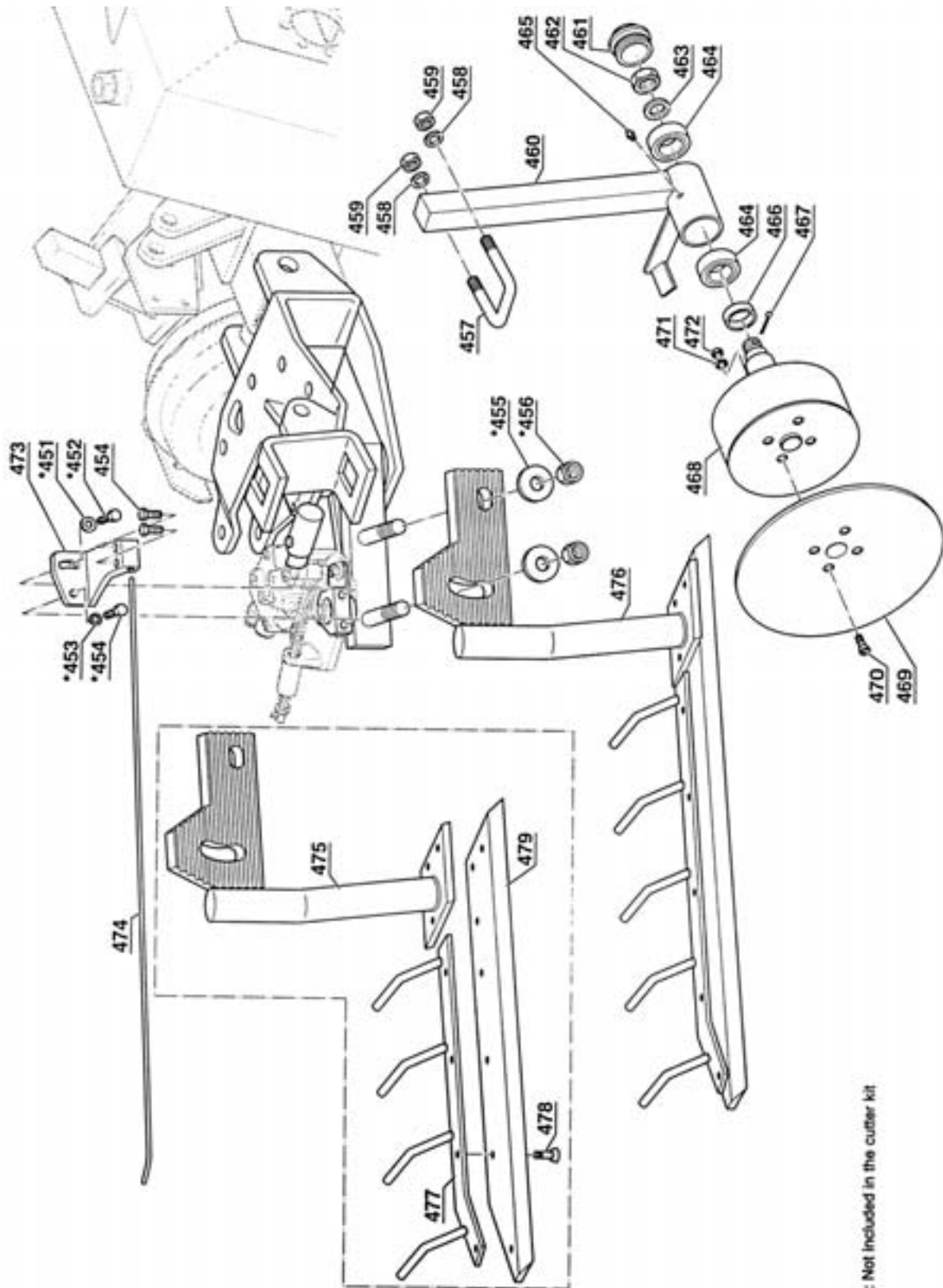
DIRT DEFLECTOR BLADE



DIRT DEFLECTOR BLADE

| <u>REF. #</u> | <u>PART NO.</u> | <u>DESCRIPTION</u> |
|---------------|-----------------|-------------------------------|
| 431 | M2TEZ20070 | Bolt M20 x 70 |
| 432 | M2DENZ1M20 | Nut M20 |
| 433 | M2RONGR020 | Lock Washer |
| 434 | M2GR000010 | Straight Shackle D.10 |
| 435 | 0127503 | Chain |
| 436 | 0127051 | Blade Holder Bracket |
| 437 | 0127062 | Plate X Ground Leveller Blade |
| 438 | M2TCE14100 | Bolt M14 x 100 |
| 439 | 0127501 | Spring Leveller Blade |
| 440 | M2RONP1Z15 | Flat Washer 14 x 42 |
| 441 | M2DEA01M14 | Lock Nut D14 |
| 442 | 0501118 | Blade Holder Shaft |
| 443 | 1001503 | Bolt M20 x 60 |

IN-ROW BLADE

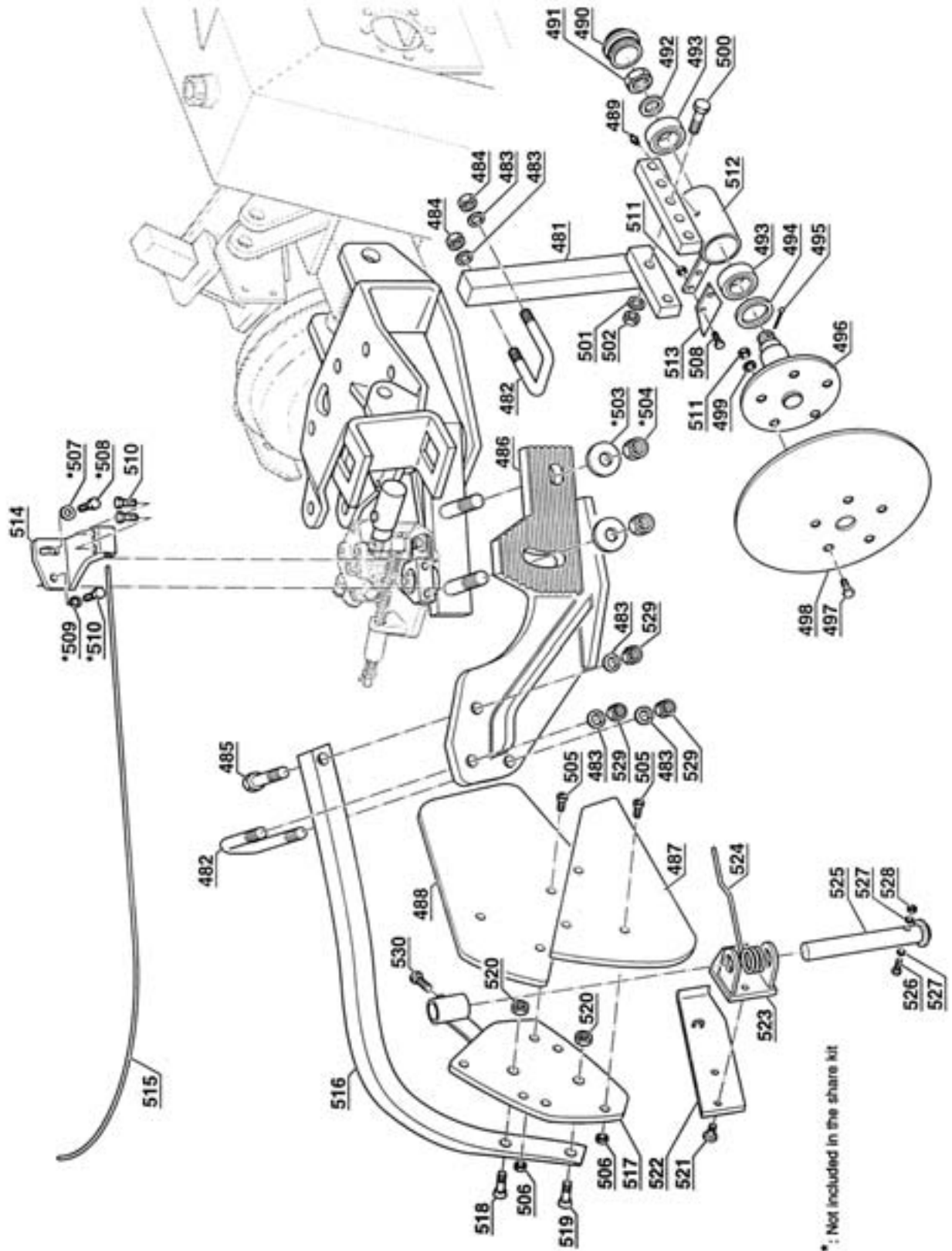


* : Not included in the cutter kit

IN ROW BLADE

| <u>REF. #</u> | <u>PART NO.</u> | <u>DESCRIPTION</u> |
|---------------|-----------------|--------------------------------|
| 451 | 0101514 | Washer 12.5 x 6 |
| 452 | M2TEZ12030 | Bolt 12 x 30 |
| 453 | M2RONP1Z12 | Galvanized Washer D.12 |
| 454 | M2TEZ12025 | Bolt 12 x 25 |
| 455 | 0102503 | Knurled Washer |
| 456 | M2DENZ1M20 | Nut M20 |
| 457 | M2VSDCA010 | Bolt Square M16 x 80 - 41 x 78 |
| 458 | M2RONP1Z16 | Flat Washer M16 |
| 459 | M2DENZ1M16 | Nut M16 |
| 460 | 0135060 | Axle Housing |
| 461 | M40103C062 | Dust Cap D.62 |
| 462 | M2DECF1M27 | Castle Nut M27 x 2 |
| 463 | M2RONP1027 | Flat Washer M27 |
| 464 | 32206 | Roller Bearing |
| 465 | M2INGM8125 | Greasing Nipple M8 x 1.25 |
| 466 | 35X62X10 | Seal Ring |
| 467 | M2COP00550 | Cotter Pin 5 x 50 |
| 468 | 0135057 | Disc Carrier Pin |
| 469 | M44FD1320L | Disc 4 Holes 320 |
| 470 | M2TSE10030 | Bolt 10 x 30 |
| 471 | M2RONP1010 | Flat Washer |
| 472 | M2DEN02M10 | Nut M10 |
| 473 | 0103509 | Rod Clevis D-35 RH |
| 474 | 0145563 | Sensing Rod L-680 RH |
| 474A | 0145562 | Sensing Rod L-850 RH |
| 475 | 0135053 | Blade Support Leg RH |
| 476 | 0135003 | Blade Sub Assembly 24" |
| 476A | 0135005 | Blade Sub Assembly 31" |
| 477 | 0135054 | Comb L=630 RH |
| 477A | 0136054 | Comb L=800 RH |
| 478 | M2TSE12020 | Allen Bolt 12 x 20 |
| 479 | M4LACL9163 | Blade L-630 RH 24" |
| 479A | M4LACL9080 | Blade L-800 RH 31" |

FRENCH PLOW



FRENCH PLOW

| <u>REF. #</u> | <u>PART NO.</u> | <u>DESCRIPTION</u> |
|---------------|-----------------|--------------------------------|
| 481 | 0126065 | Disc Support Shaft |
| 482 | M2VSDCA010 | Square Bolt M16 - 80 - 41 - 78 |
| 483 | M2RONP1Z16 | Flat Washer 16 |
| 484 | M2DENZ1M16 | Nut M16 |
| 485 | M2TEZ16080 | Bolt 16 x 80 |
| 486 | 0126057 | Plough Beam Support Staff |
| 487 | 1301501 | Plough Share |
| 488 | 1301502 | Turn Furrow |
| 489 | M2INGM8125 | Greasing Nipple |
| 490 | M40103C072 | Dust Cap D.62 |
| 491 | M2DECF1M27 | Castle Nut M27 |
| 492 | M2RONP1027 | Flat Washer 27 |
| 493 | 32207 | Roller Bearing |
| 494 | 45X72X10 | Seal Ring |
| 495 | M2COP00550 | Cotter Pin 5 x 50 |
| 496 | 1001051 | Axle Disc |
| 497 | M2TTDE1235 | Bolt 12 x 35 |
| 498 | M45FD1410L | Disc 5 Holes D-410 |
| 499 | M2RONP1012 | Flat Washer M12 |
| 500 | M2TEZ20090 | Bolt 20 x 90 |
| 501 | M2RONGR020 | Lock Washer D20 |
| 502 | M2DENZ1M20 | Nut M20 |
| 503 | 0102503 | Knurled Washer 20 |
| 504 | M2DENZ1M20 | Nut M20 |
| 505 | M2TSE10030 | Bolt 10 x 30 |
| 506 | M2DEN02M10 | Nut M10 |
| 507 | 0101514 | Washer 12.5 x 6 |
| 508 | M2TE012030 | Bolt M12 x 30 |
| 509 | M2RONP1Z12 | Flat Washer |
| 510 | M2TEZ12025 | Bolt M12 x 25 |
| 511 | M2DEN02M12 | Nut M12 |
| 512 | 1001064 | Support |
| 513 | 1001531 | Scraper |
| 514 | 0103509 | Rod Clevis D-35 RH |
| 515 | 0126503 | Sensing Rod L-900 |
| 516 | 1301521 | Plough Beams |
| 517 | 1301061 | Plough Share Support Plate |
| 518 | M2TSE12070 | Bolt M12 x7 0 |
| 519 | M2TSE12050 | Bolt M12 x 50 |
| 520 | M2DEM00M12 | Lock Nut M12 |

FRENCH PLOW

| <u>REF. #</u> | <u>PART NO.</u> | <u>DESCRIPTION</u> |
|---------------|-----------------|-------------------------------|
| 521 | M2TSE12020 | Bolt M12 x 20 |
| 522 | 1301157 | Blade Vine Cleaner |
| 523 | 1301095 | Fork |
| 524 | 1003507 | Spring |
| 525 | 1301156 | Pin |
| 526 | M2TEZ10060 | Bolt M10 x 60 |
| 527 | M2RONP1010 | Flat Washer |
| 528 | M2DEA01M10 | DE Upper Self Locking Nut M10 |
| 529 | M2DEA01M16 | Lock Nut M16 |
| 530 | 0101503 | Lock Bolt M20 x 60 |

LIMITED WARRANTY



GEARMORE, INC., warrants each new Gearmore product to be free from defects in material and workmanship for a period of twelve (12) months from date of purchase to the original purchaser. This warranty shall not apply to implements or parts that have been subject to misuse, negligence, accident, or that have been altered in any way.

Our obligation shall be limited to repairing or replacement of any part, provided that such part is returned within thirty (30) days from date of failure to Gearmore through the dealer from whom the purchase was made, transportation charges prepaid.

This warranty shall not be interpreted to render us liable for injury or damages of any kind or nature, direct, consequential or contingent, to person or property. This warranty does not extend to loss of crops, loss because of delay in harvesting or any other expenses, for any other reasons.

Gearmore in no way warrants engines, tires, or other trade accessories, since these items are warranted separately by these respective manufacturers.

Gearmore reserves the right to make improvements in design or changes in specification at any time, without incurring any obligations to owners or units previously sold.

GEARMORE, INC.
13477 Benson Ave.
Chino, CA 91710

Always refer to and heed machine operating warning decals on machine.

The serial number of this product is stored in our computer database, thus submitting a warranty registration card is not required.