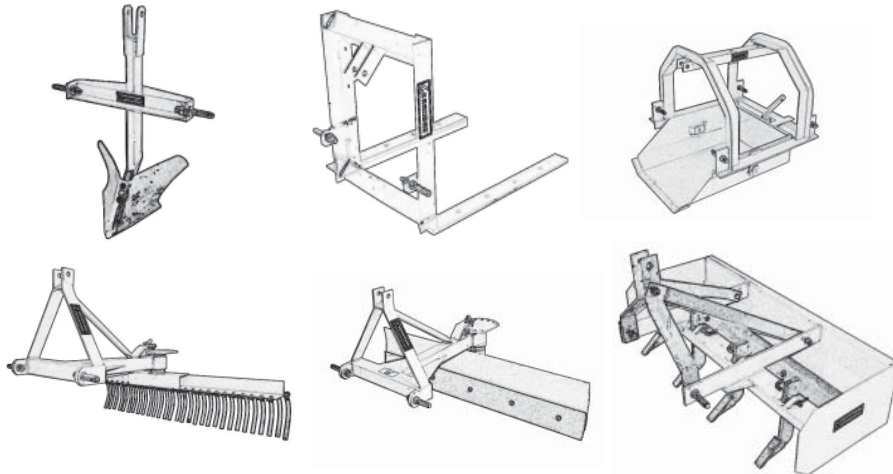




# **XB IMPLEMENTS PARTS MANUAL**



## **Parts Manual For:**

- **MIDDLE BUSTER/SUB SOILER - MB-S-XB**
- **CARRY ALL - CA-XB**
- **DIRT SCOOP - DS-24-XB**
- **YARD RAKE - TYR-60-XB**
- **REAR BLADE - TRB-60-XB**
- **BOX BLADE - BB-48-XB**

**August 2011**

# TABLE OF CONTENTS

<u>SECTION</u>	<u>DESCRIPTION .....</u>	<u>PAGE</u>
1	<b>Introduction .....</b>	<b>1</b>
1.1	Purchaser's Responsibility .....	1
2	<b>Parts.....</b>	<b>2 - 7</b>
2.1	XB Middle Buster/Sub-Soiler.....	2
2.2	XB Carry All .....	3
2.3	XB Dirt Scoop .....	4
2.4	XB Yard Rake .....	5
2.5	XB Rear Blade .....	6
2.6	XB Box Blade .....	7
3	<b>Limited Warranty .....</b>	<b>8</b>

# 1 INTRODUCTION

This manual contains parts information for your XB Series implement. Sometime in the future your implement may need new parts to replace those that are worn or broken. If so, go to your dealer and provide him with the model and part number.

**OPERATOR ORIENTATION** - The directions left, right, front and rear, as mentioned throughout this manual, are as seen from the driver's seat and facing in the direction of travel.

## 1.1 PURCHASER'S RESPONSIBILITY

It is the responsibility of the purchaser and/or operator to.....

- Inspect the equipment and replace or repair any parts that are damaged or worn which under continued operation would cause damage, wear to other parts, or cause a safety hazard.
- Return the equipment or parts to the authorized dealer, from where it was purchased, for service or replacement of defective parts that are covered by warranty. (The factory may inspect equipment or parts before warranty claims are honored.)
- Payment of all costs incurred by the dealer for traveling to or transporting the equipment for warranty inspection and or claims.

NAME: \_\_\_\_\_

PURCHASED FROM: \_\_\_\_\_

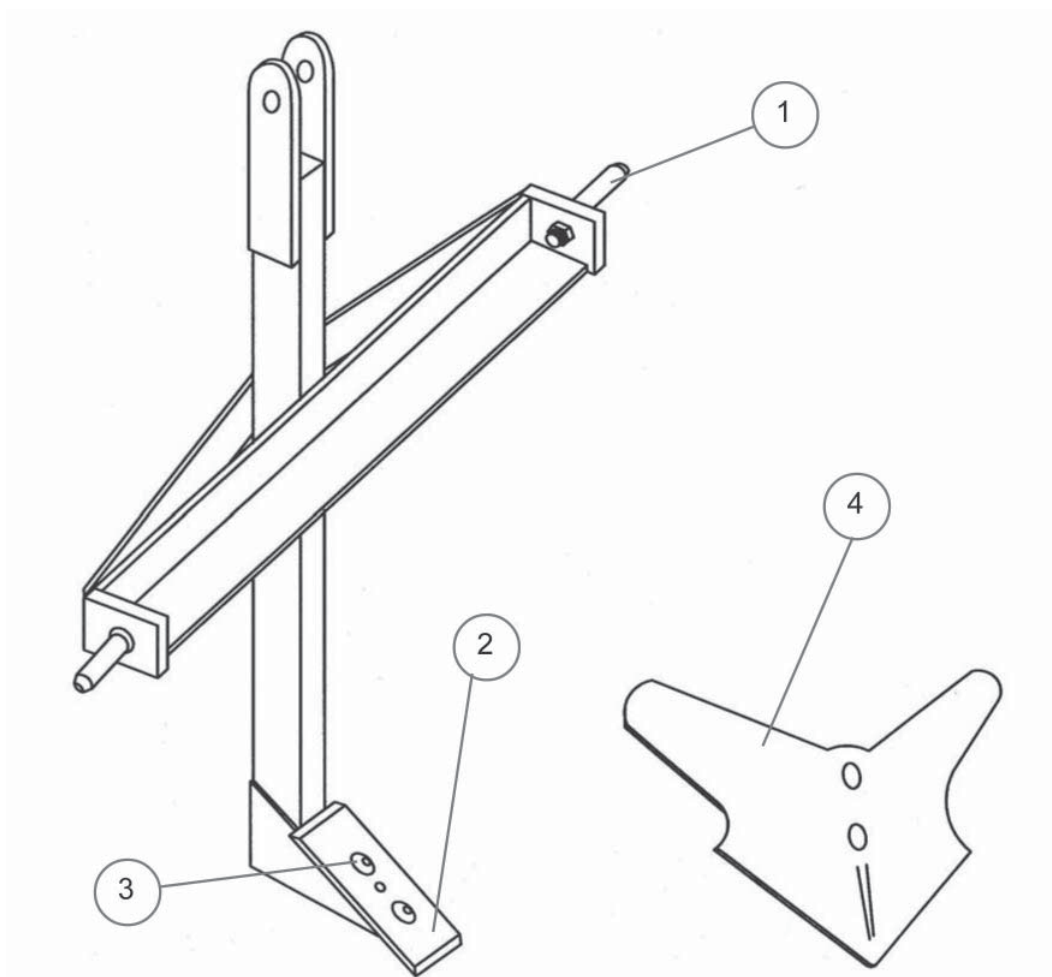
DATE OF PURCHASE: \_\_\_\_\_

MODEL NUMBER: \_\_\_\_\_

SERIAL NUMBER: \_\_\_\_\_

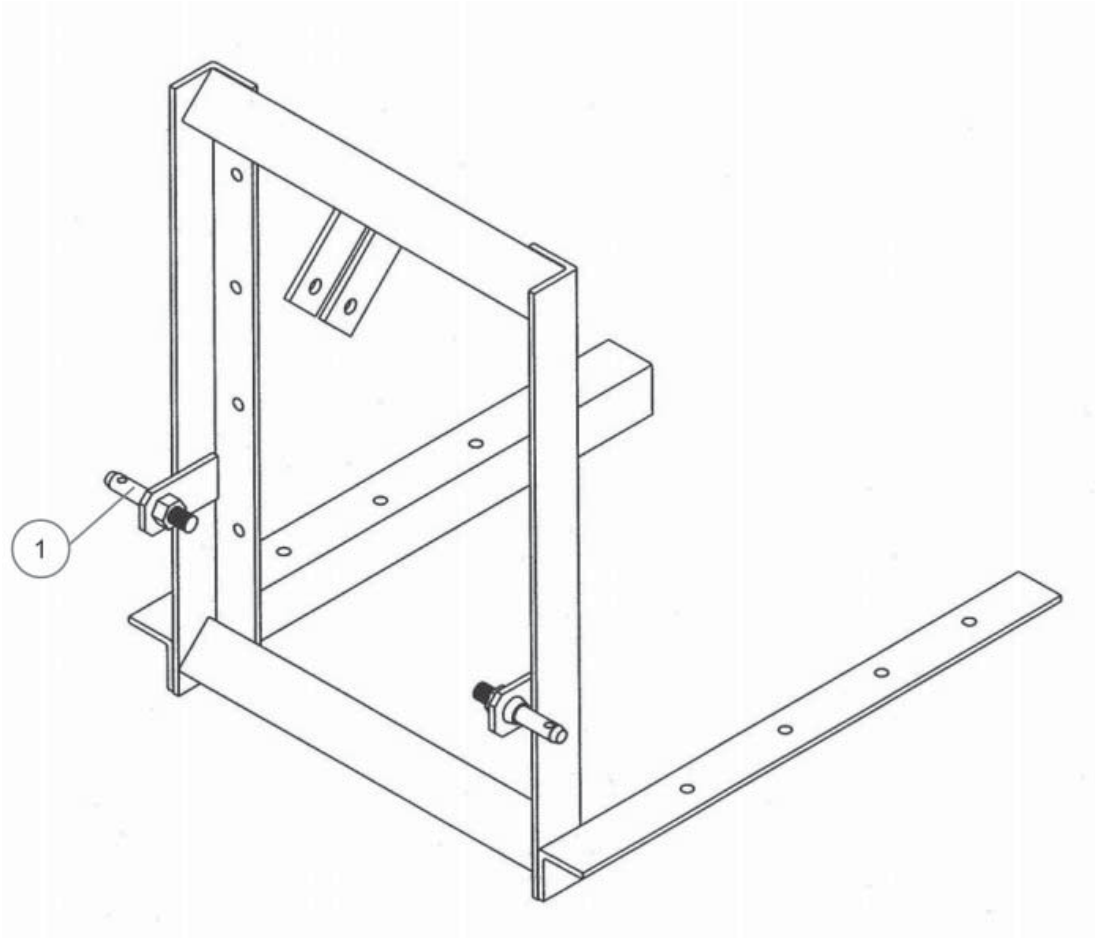
## 2 PARTS

### 2.1 XB MIDDLE BUSTER/SUB-SOILER



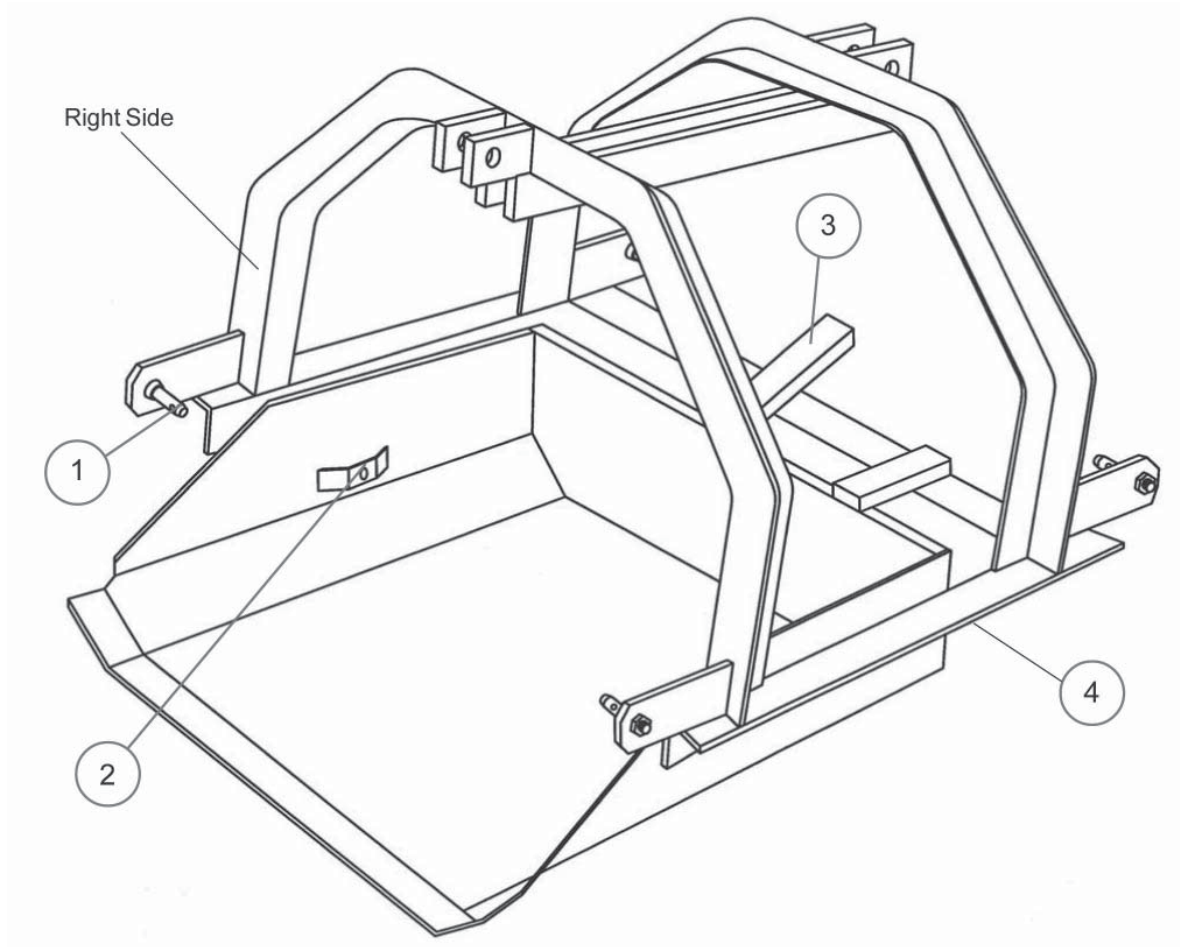
<b><u>REF #</u></b>	<b><u>PART NO.</u></b>	<b><u>DESCRIPTION</u></b>
1	500001	Cat. 1 Lift Pins (2 per pack)
2	177008	Sub-Soiler Point
3	503002	½ x 3 ½ Plow Bolt Set (2 per pack)
4	177007	Furrower - 12"

## 2.2 XB CARRY ALL



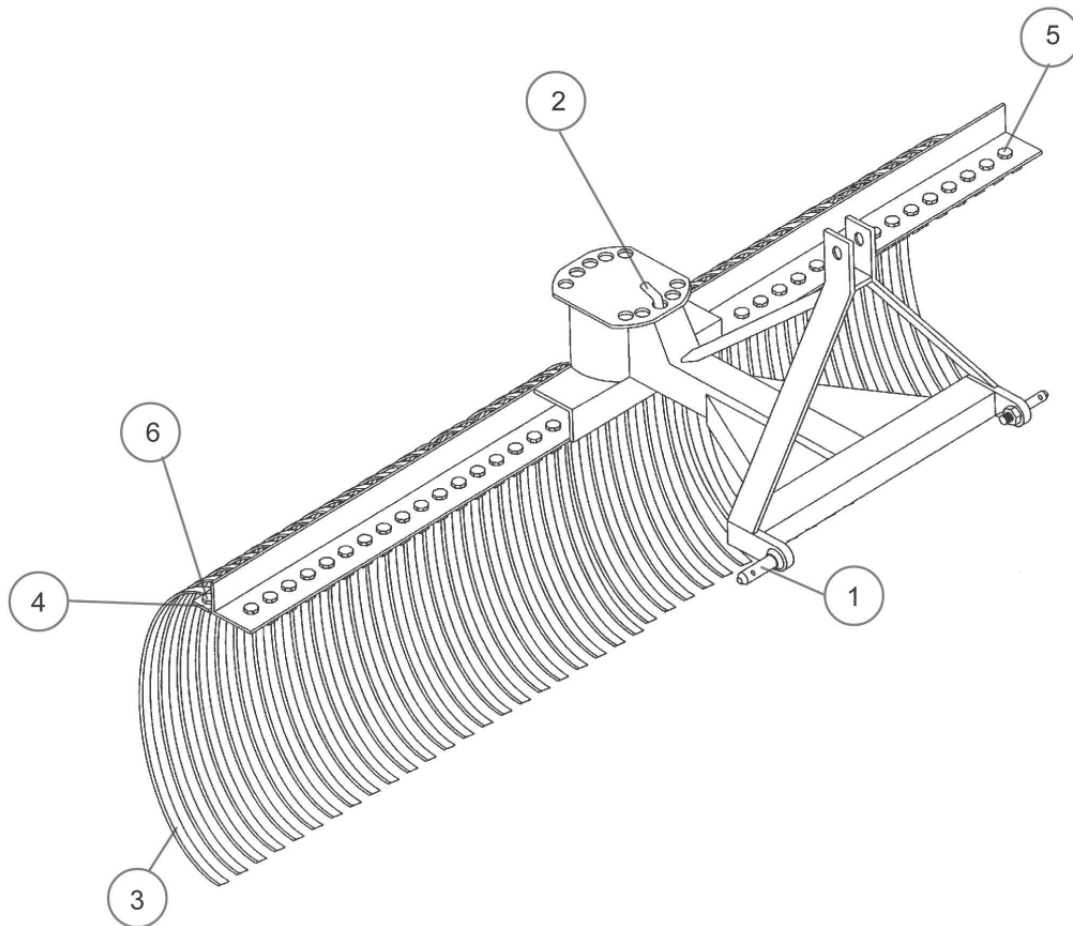
<b><u>REF #</u></b>	<b><u>PART NO.</u></b>	<b><u>DESCRIPTION</u></b>
1	500001	Cat. 1 Lift Pin (2 per pack)

## 2.3 XB DIRT SCOOP



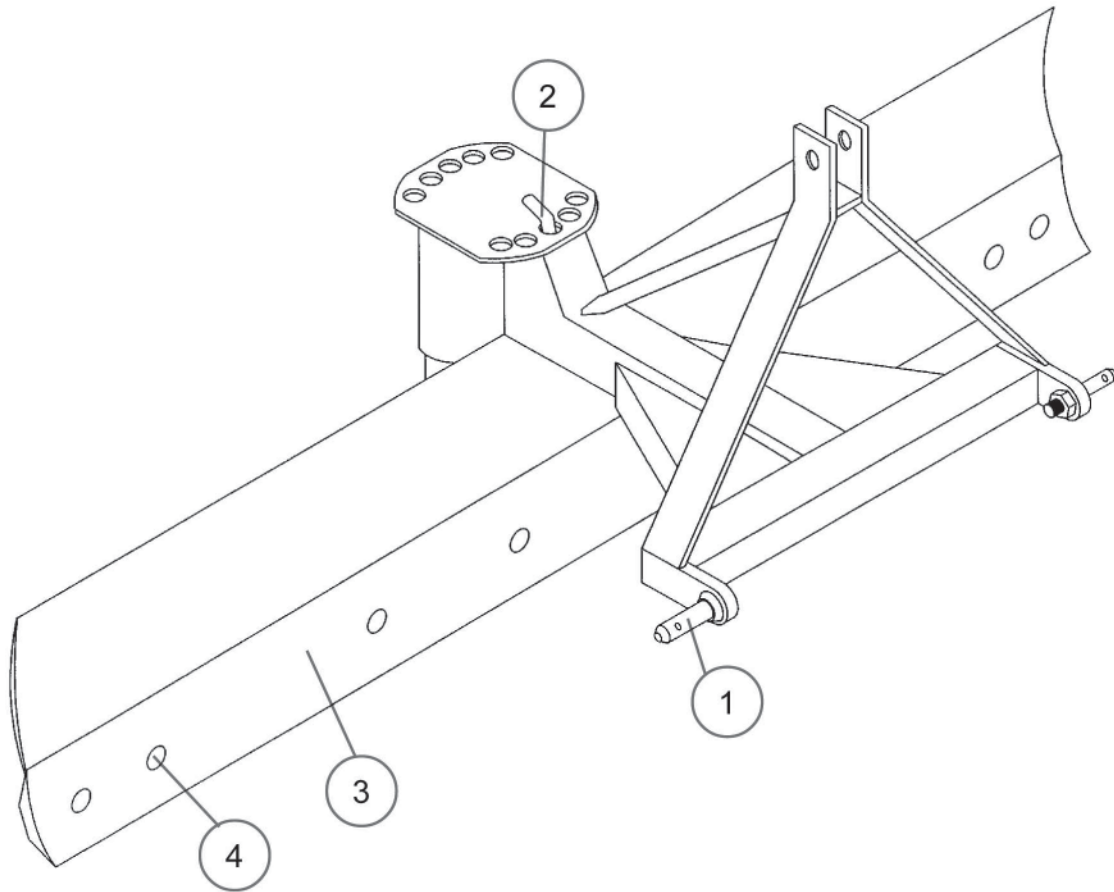
<b><u>REF #</u></b>	<b><u>PART NO.</u></b>	<b><u>DESCRIPTION</u></b>
1	500001	Cat. 1 Lift Pin (2 per pack)
2	505003	Hinge Pin
3	325035	Frame Latch Handle
4	505001	Latch Roller Assembly (not shown)

## 2.4 XB YARD RAKE



<u>REF #</u>	<u>PART NO.</u>	<u>DESCRIPTION</u>
1	500001	Cat. 1 Lift Pin (2 per pack)
2	340065	Index Pin
3	503006	Tines (5 per pack)
4	350063	60" Strap
5	Obtain Locally	$\frac{3}{8}$ " x 1" Bolt
6	Obtain Locally	$\frac{3}{8}$ " x 1 $\frac{1}{2}$ " Bolt

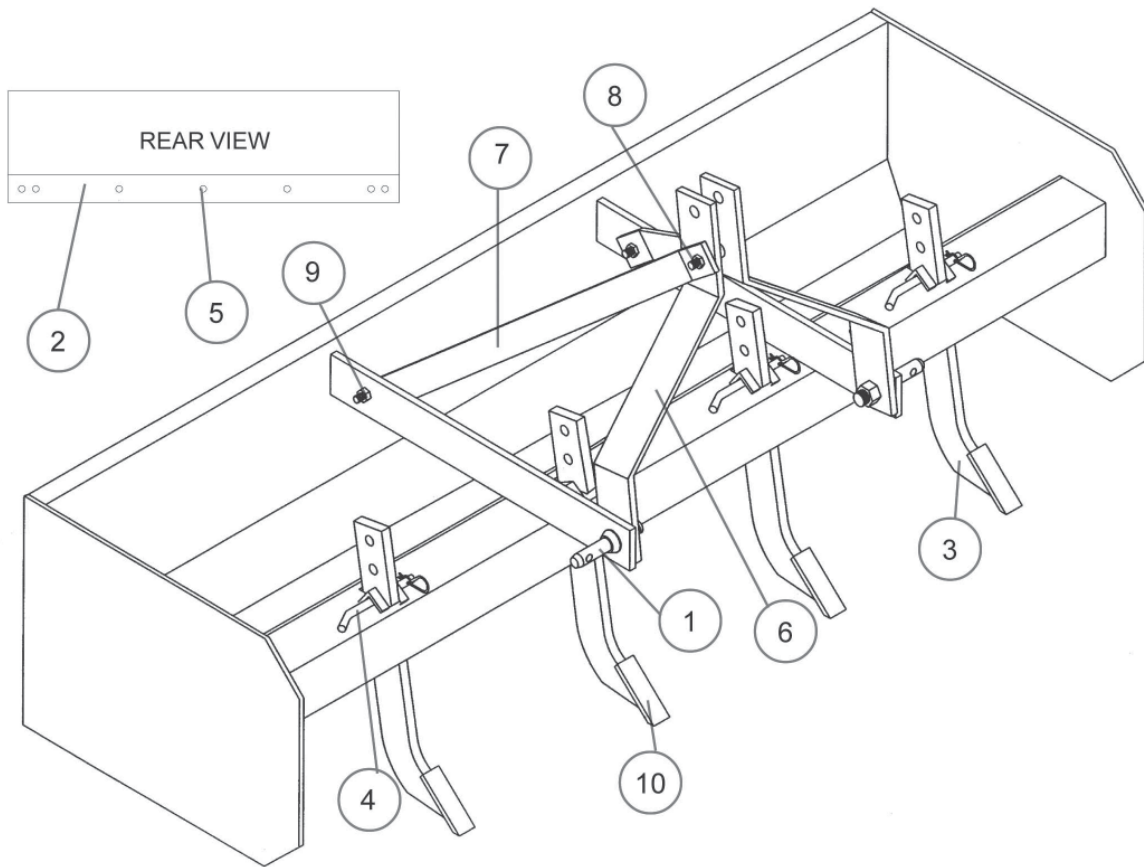
## 2.5 XB REAR BLADE



<b><u>REF #</u></b>	<b><u>PART NO.</u></b>	<b><u>DESCRIPTION</u></b>
1	500001	Cat. 1 Lift Pin (2 per pack)
2	340065	Index Pin
3	188015	60" Cutting Edge
4	503001	Cutting Edge Bolt Set (9 per pack)



## 2.6 XB BOX BLADE



<b>REF #</b>	<b>PART NO.</b>	<b>DESCRIPTION</b>
1	500001	Cat. 1 Lift Pin (2 per pack)
2	188005	48" Cutting Edge
3	403012	Ripper Shank w/Tooth
4	503501	"L" Pin w/Hair Pin
5	503001	Cutting Edge Mounting Bolt Set
6	311055	Lift Arm
7	311056	Lift Arm Brace
8	501090	$\frac{3}{8}$ " x 4 $\frac{1}{2}$ " Lift Arm Spacer Kit
9	Obtain Locally	$\frac{3}{8}$ " x 2" Bolt
10	174010	Tooth (weld on)

### 3 LIMITED WARRANTY



GEARMORE, INC., warrants each new Gearmore product to be free from defects in material and workmanship for a period of twelve (12) months from date of purchase to the original purchaser. This warranty shall not apply to implements or parts that have been subject to misuse, negligence, accident, or that have been altered in any way.

Our obligation shall be limited to repairing or replacement of any part, provided that such part is returned within thirty (30) days from date of failure to Gearmore through the dealer from whom the purchase was made, transportation charges prepaid.

This warranty shall not be interpreted to render us liable for injury or damages of any kind or nature, direct, consequential or contingent, to person or property. This warranty does not extend to loss of crops, loss because of delay in harvesting or any other expenses, for any other reasons.

Gearmore in no way warrants engines, tires, or other trade accessories, since these items are warranted separately by these respective manufacturers.

Gearmore reserves the right to make improvements in design or changes in specification at any time, without incurring any obligations to owners or units previously sold.

Please be advised that all warranty work done by your dealer must be approved by Gearmore before work begins.

GEARMORE, INC.  
13477 Benson Ave.  
Chino, CA 91710

Always refer to and heed machine operating warning decals on machine.