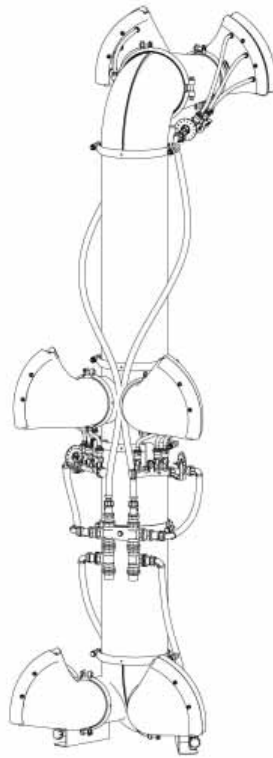




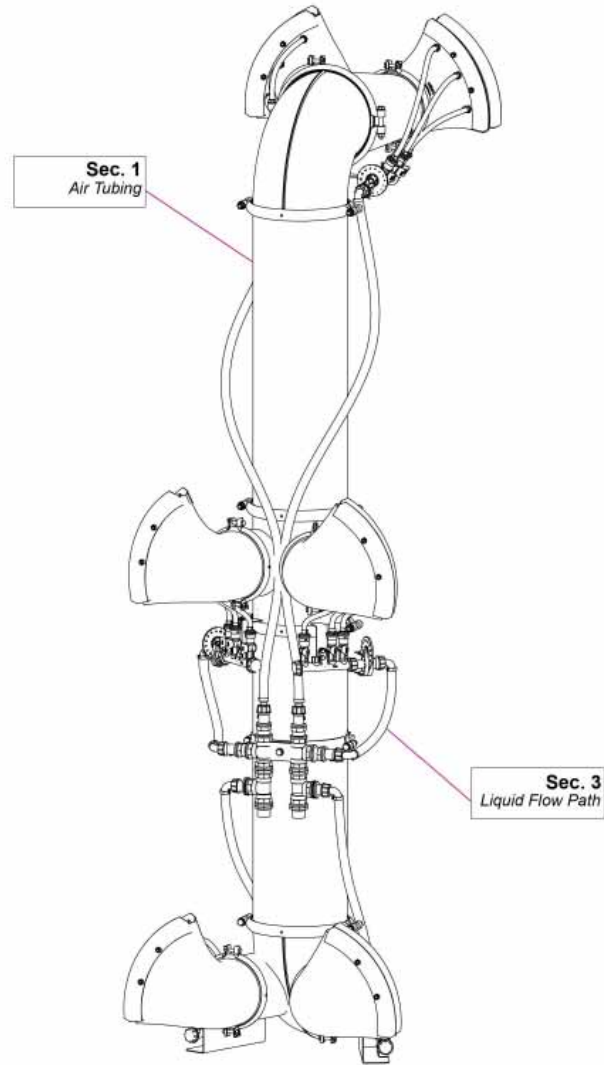
VENTURI AIR SPRAYERS ORCHARD HEAD 6 FISHTAIL HEADS



**Parts Manual For
T6V55T12 Head
For T55E2-2000**

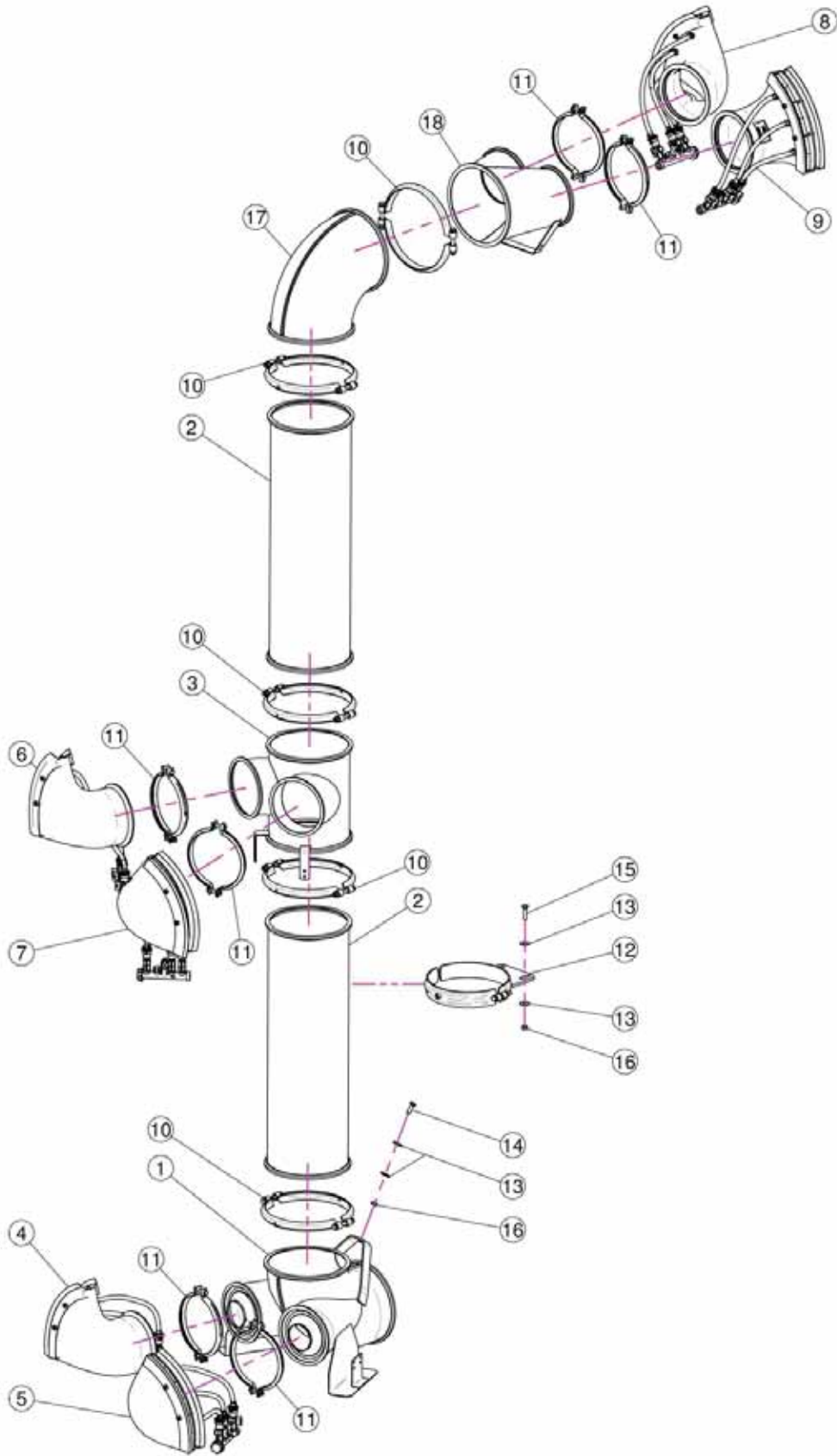
June 2013

TABLE OF CONTENTS



SECTION	DESCRIPTION	PAGE
1	Air Tubing	1-2
2	Fishtail Heads	3-4
3	Liquid Flow Path	5-8
3.1	Fishtail 20.212.302C	7
3.2	Fishtail 20.213.302C	8
4	Liquid Manifold	9
5	Dial-A-Rate	10

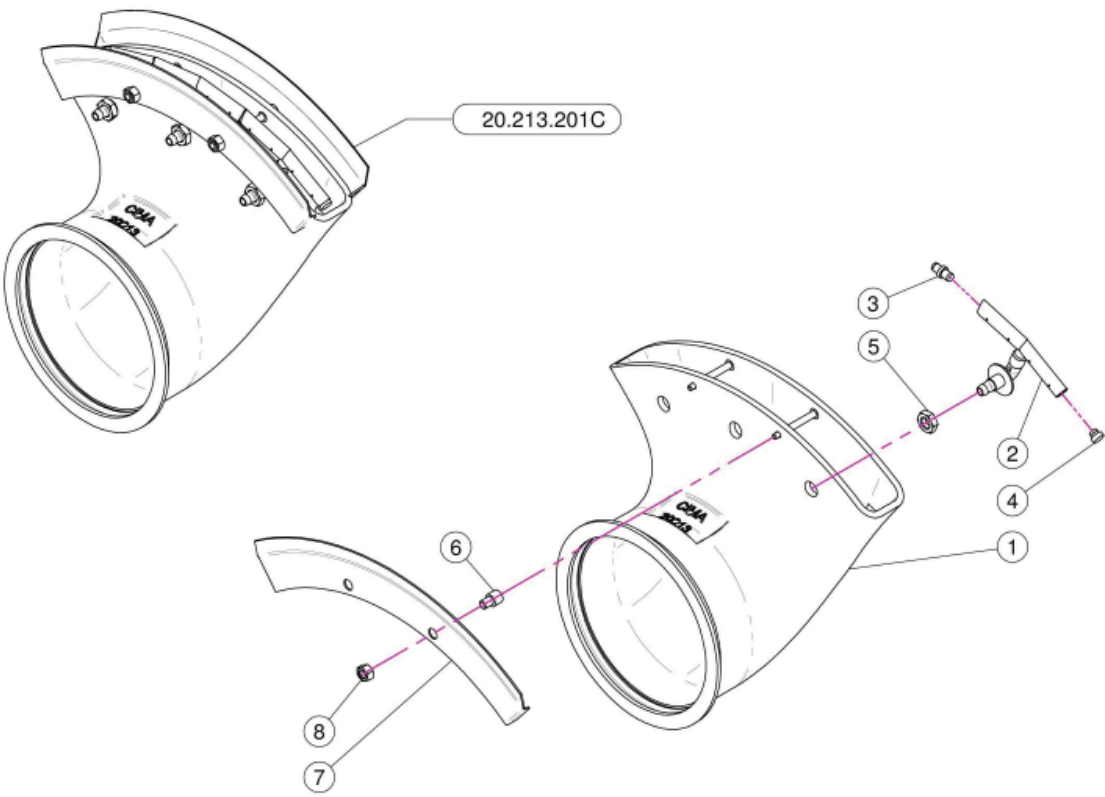
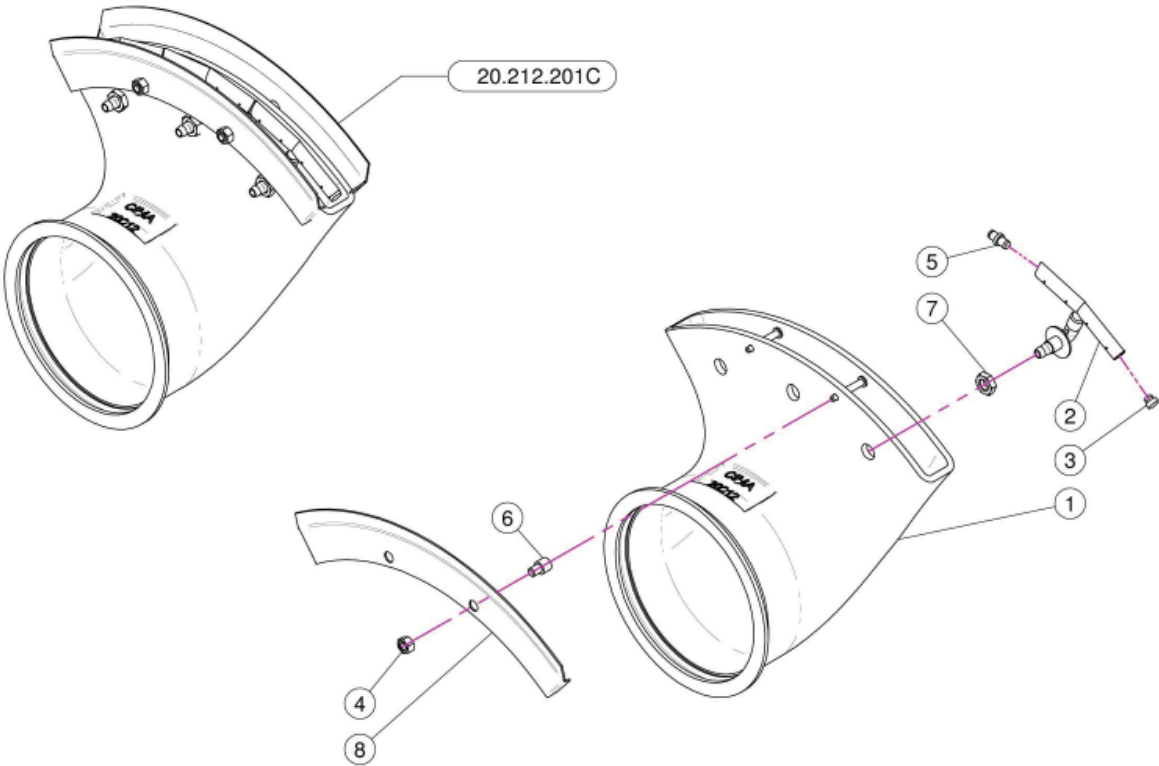
Sec. 01 - AIR TUBING



Sec. 01 - AIR TUBING

<u>REF.</u>	<u>QTY.</u>	<u>PART NO.</u>	<u>DESCRIPTION</u>
1	1	05.957.010	Body D.250 With 2 Outlets D.120
2	2	21.100.080	Extension D.250 x 800
3	1	05.956.000	Central Body 6V Head
4	1	20.212.302C	D.175 Complete Fishtail
5	1	20.212.302C	D.175 Complete Fishtail
6	1	20.212.302C	D.175 Complete Fishtail
7	1	20.212.302C	D.175 Complete Fishtail
8	1	20.213.302C	D.175 Complete Fishtail
9	1	20.213.302C	D.175 Complete Fishtail
10	5	05.813.000	Clamp D.275
11	6	05.616.000	Pipe Clamp D.175
12	1	20.504.000	D.250 Clamp Heads Fixing
13	6	RP.010.030	Washer D.10 x 30 mm
14	1	TE.010.030T	Screw TE M10 x 30
15	2	TE.010.040T	Screw TE M10 x 40
16	3	D0.10.5587G	Nut M10
17	1	05.952.000	Elbow D.250 90°
18	1	05.976.200	Body D.250 With 2 Outlets D.175

Sec. 02 - FISHTAIL HEADS



Sec. 02 - FISHTAIL HEADS

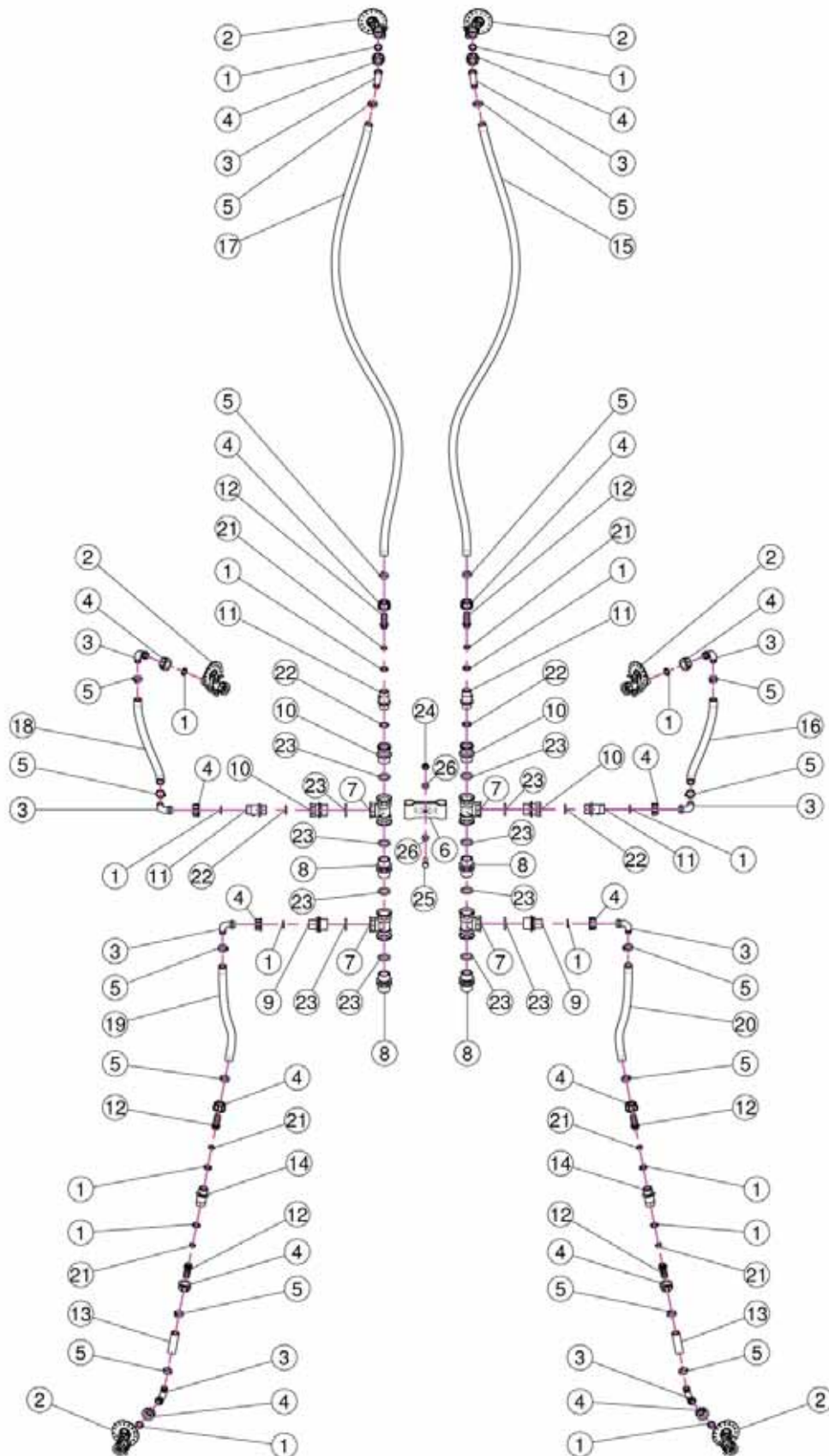
20.212.201C

<u>REF.</u>	<u>QTY.</u>	<u>PART NO.</u>	<u>DESCRIPTION</u>
1	1	20.212.200	3 Complete Sectors D.175 Fishtail
2	3	20.478.000	Pipe For Fishtails
3	2	20.083.000	Short Tap For Pipe
4	4	DOT.08.5587	M8 Brass Nut
5	2	20.082.000	Special Nipples For Copper Pipe
6	4	20.572.000	Male - Female Reduction
7	3	DOT.12.5589	Lower Brass Nut M12
8	2	20.635.000	Protection For Fishtail

20.213.201C

<u>REF.</u>	<u>QTY.</u>	<u>PART NO.</u>	<u>DESCRIPTION</u>
1	1	20.213.200	3 Complete Sectors D.175 Fishtail
2	3	20.478.000	Pipe For Fishtails
3	2	20.082.000	Special Nipples For Copper Pipe
4	2	20.083.000	Short Tap For Pipe
5	3	DOT.12.5589	Lower Brass Nut M12
6	4	20.572.000	Male - Female Reduction
7	2	20.635.000	Protection For Fishtail
8	4	DOT.08.5587	M8 Brass Nut

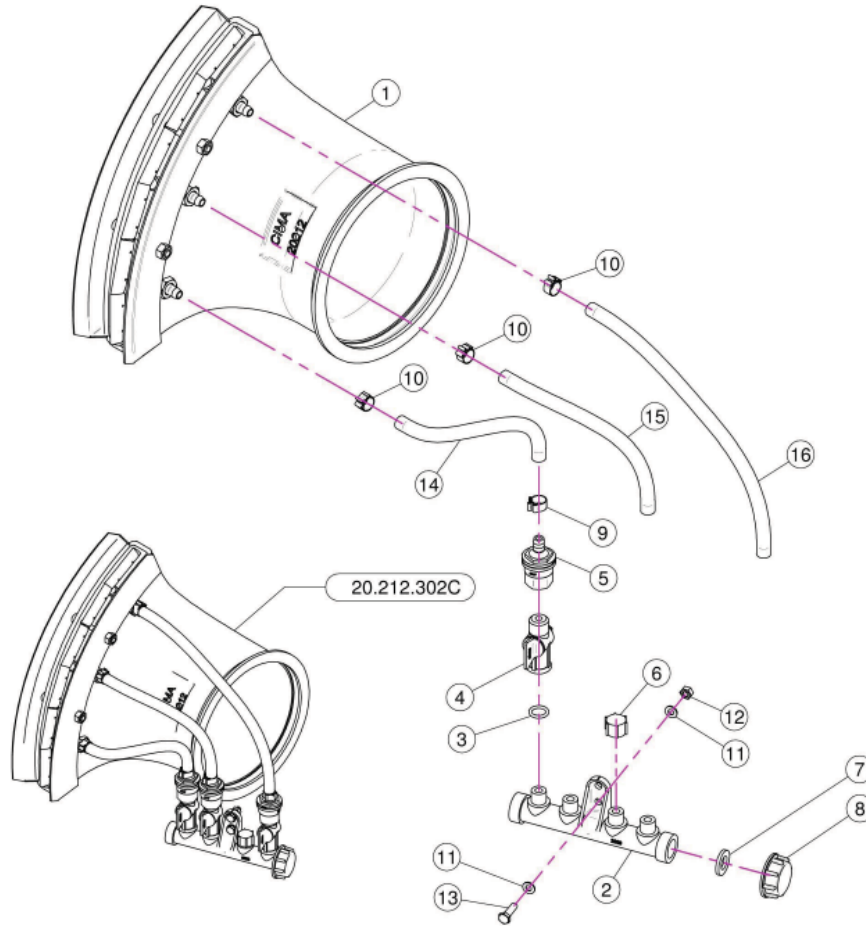
Sec. 03 - LIQUID FLOW PATH



Sec. 03 - LIQUID FLOW PATH

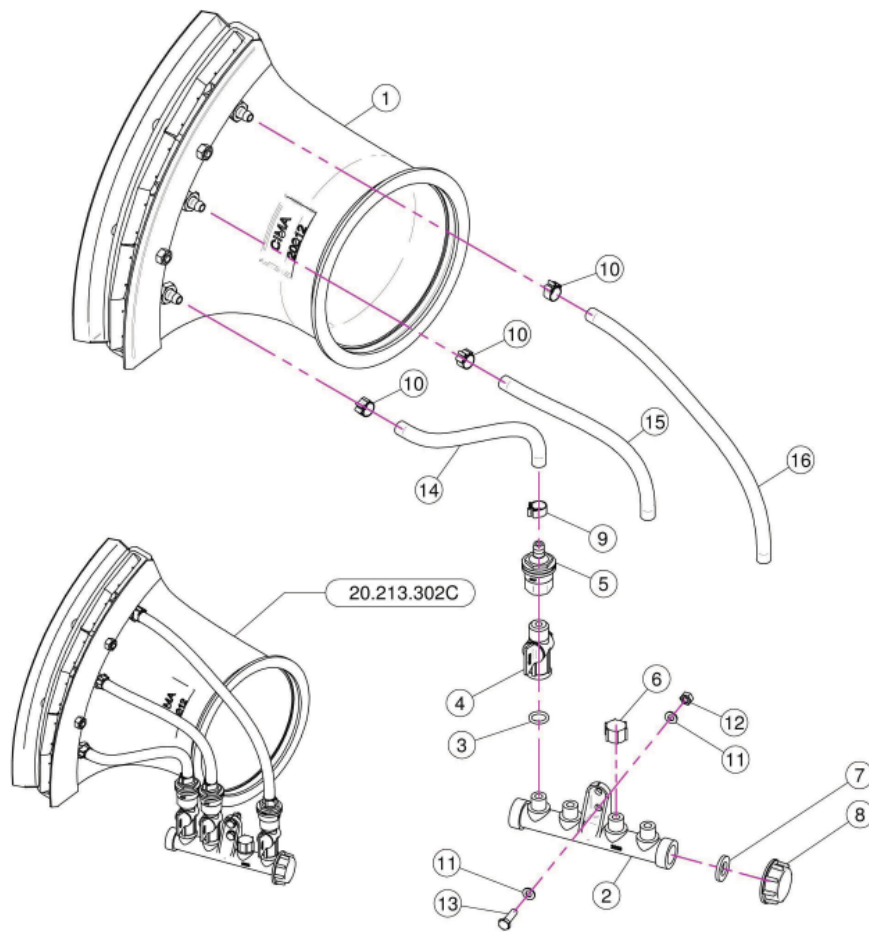
<u>REF.</u>	<u>QTY.</u>	<u>PART NO.</u>	<u>DESCRIPTION</u>
1	16	02.349.000	17 x 23 x 3 Flat Gasket
2	6	02.150.000	Rotation Disc Regulation
3	10	00.055.046	Curved Union With R. H. D.17
4	16	00.055.045	3/4" Fly Nut
5	16	FC.023.5.025	Hose Clamp 23.5 - 25
6	1	02.999.000	T Union Fixing Bracket
7	4	02.274.000	Female Tesse 1"
8	4	00.055.034	Nipple 1" / 1" GAS
9	2	02.293.000	1" M - 3/4" M Reducer Nipple
10	4	21.015.000	Reduction 1" M 3/4" F
11	4	20.087.000	Valve 3/4 3/4
12	6	02.002.000	Straight Union 3/4" R.H. 18
13	2	02.211.000	Hose D.16 x 23 L=70 (Per Foot)
14	2	20.087.000M	Valve 3/4 3/4
15	1	02.211.000	Hose D.16 x 23 L=1500 (Per Foot)
16	1	02.211.000	Hose D.16 x 23 L=400 (Per Foot)
17	1	02.211.000	Hose D.16 x 23 L=1900 (Per Foot)
18	1	02.211.000	Hose D.16 x 23 L=400 (Per Foot)
19	1	02.211.000	Hose D.16 x 23 L=1000 (Per Foot)
20	1	02.211.000	Hose D.16 x 23 L=1000 (Per Foot)
21	6	OR.000.117	13.1 x 18.34 x 2.62 O-Ring Gasket
22	4	OR.004.081	20.22 x 3.53 O-Ring Gasket
23	12	OR.000.507	27 x 5 O-Ring Gasket
24	1	DA.010.0BG	Self Locking Nut M10
25	1	TE.010.035T	Screw TE 10 x 35
26	2	RP.010.000	Washer D.10

Sec. 03.1 - 20.212.302C FISHTAIL ASSEMBLY



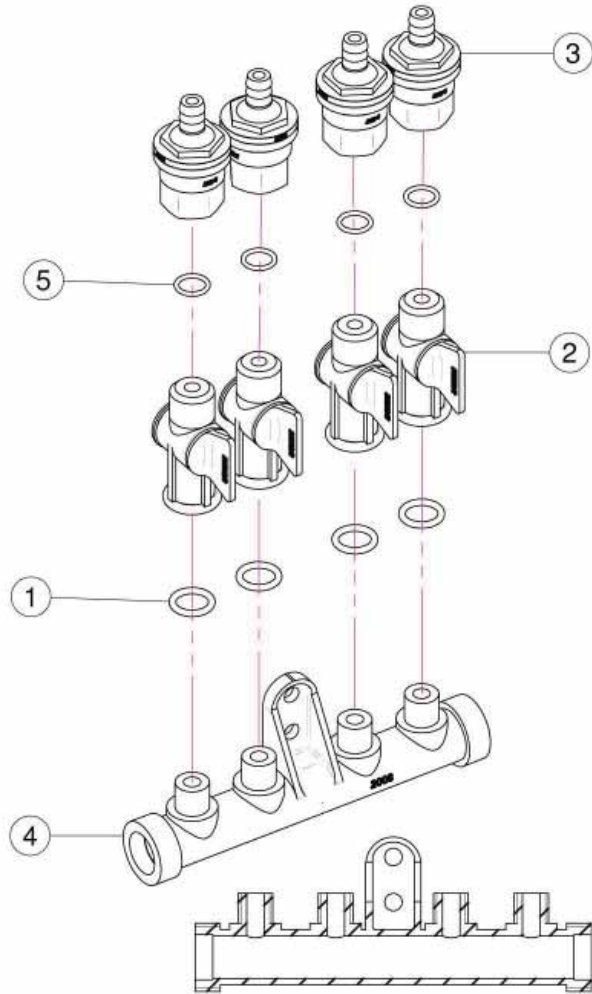
<u>REF.</u>	<u>QTY.</u>	<u>PART NO.</u>	<u>DESCRIPTION</u>
1	1	20.212.201C	D.175 Fishtail Complete
2	1	02.008.000	Sprayheads Liquid Manifold
3	3	OR.000.117	13.1 x 18.34 x 2.62 O-Ring Gasket
4	3	20.202.100	Tap Assembly
5	3	00.227.01C	Anti-Drip Valve
6	1	02.013.000	Plug G 1/4"
7	1	02.030.010	Gasket
8	1	02.182.000	Female 3/4" Cap
9	3	FC.013.5.015	Hose Clamp
10	3	FC.012.5.014	Hose Clamp
11	4	RP.006.000	Washer D.6
12	2	D0.06.5588G	Nut M6
13	2	TE.006.020T	Screw TE M6 x 20
14	1	02.217.000	Hose D.8 x 13 L=320 (Per Foot)
15	1	02.217.000	Hose D.8 x 13 L=320 (Per Foot)
16	1	02.217.000	Hose D.8 x 13 L=420 (Per Foot)

Sec. 03.2 - 20.213.302C FISHTAIL ASSEMBLY



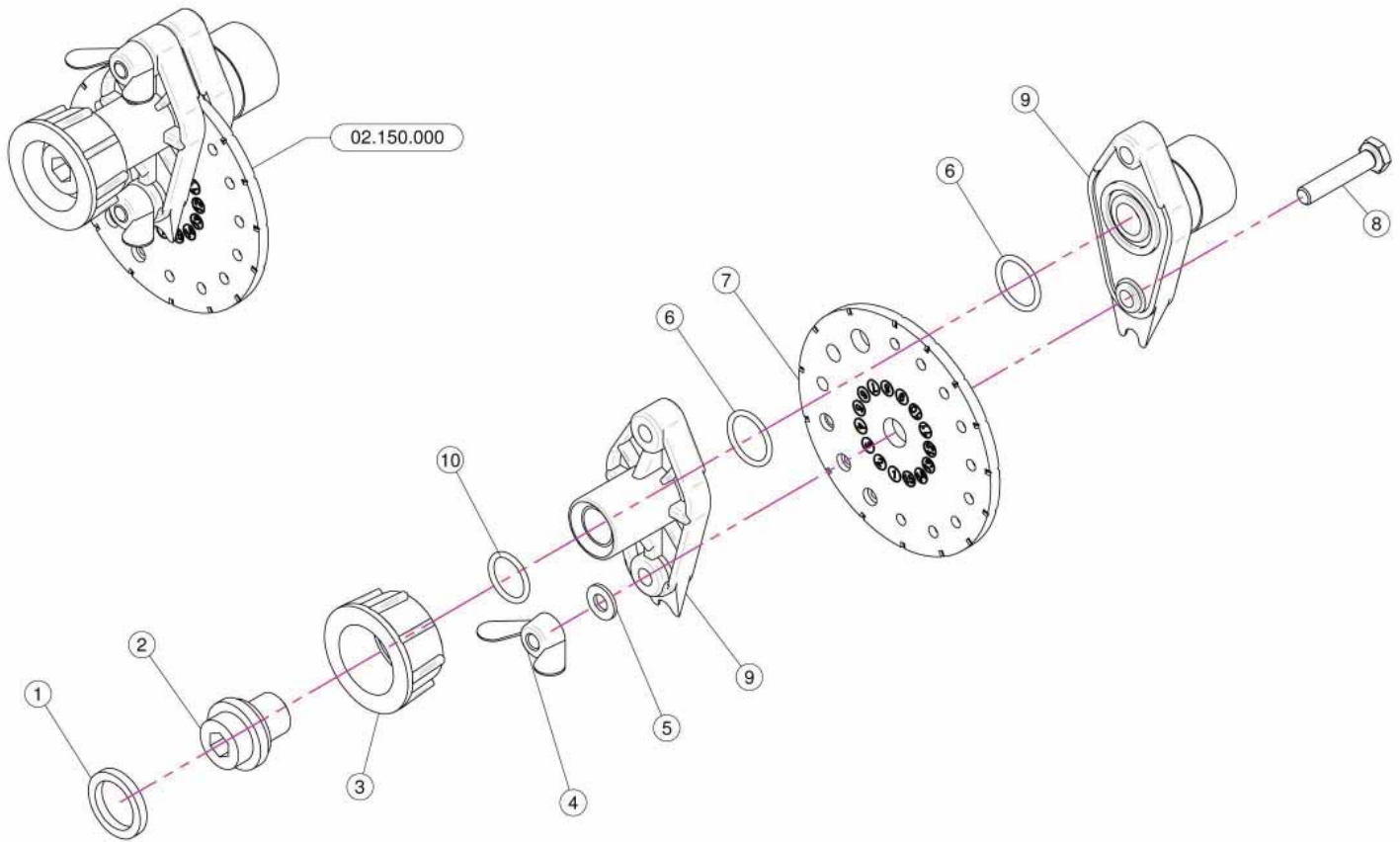
REF.	QTY.	PART NO.	DESCRIPTION
1	1	20.213201C	D.175 Fishtail Complete
2	1	02.008.000	Sprayheads Liquid Manifold
3	3	OR.000.117	13.1 x 18.34 x 2.62 O-Ring Gasket
4	3	20.202.100	Tap Assembly
5	3	00.227.01C	Anti-Drip Valve
6	1	02.013.000	Plug G 1/4"
7	1	02.030.010	Gasket
8	1	02.182.000	Female 3/4" Cap
9	3	FC.013.5.015	Hose Clamp
10	3	FC.012.5.014	Hose Clamp
11	4	RP.006.000	Washer D.6
12	2	D0.06.5588G	Nut M6
13	2	TE.006.020T	Screw TE M6 x 20
14	1	02.217.000	Hose D.8 x 13 L=320 (Per Foot)
15	1	02.217.000	Hose D.8 x 13 L=320 (Per Foot)
16	1	02.217.000	Hose D.8 x 13 L=420 (Per Foot)

Sec. 04 - *MANIFOLD & SHUT-OFF VALVES*



<u>REF.</u>	<u>QTY.</u>	<u>PART NO.</u>	<u>DESCRIPTION</u>
		02.008.304C	Complete Assembly
1	4	OR.000.117	13.1 x 18.34 x 2.62 O-Ring Gasket
2	4	20.202.100	Tap Assembly
3	4	00.227.01C	Anti-Drip Valve
4	1	02.008.000	Sprayheads Liquid Manifold
5	4	OR.002.043	10.82 x 14.38 x 1.78 Nbr 70 O-Ring Gasket

Sec. 05 - DIAL-A-RATE



<u>REF.</u>	<u>QTY.</u>	<u>PART NO.</u>	<u>DESCRIPTION</u>
1	1	02.349.000	17 x 23 x 3 Flat Gasket
2	1	02.117.000	Adapter Nipple
3	1	00.055.045	3/4" Fly Nut
4	2	DF.OTT.006	Wing Nut M6
5	2	RP.006.000I	INOX Washer D.6
6	2	OR.002.062	D.15.6 x 1.78 O-Ring
7	1	02.148.000	Regulator Disc
8	2	TE.006.030I	INOX M6 x 30 Bolt
9	1	02.147.000	Regulator Body
10	1	OR.003.050	O-Ring D.12.37 x 2.62