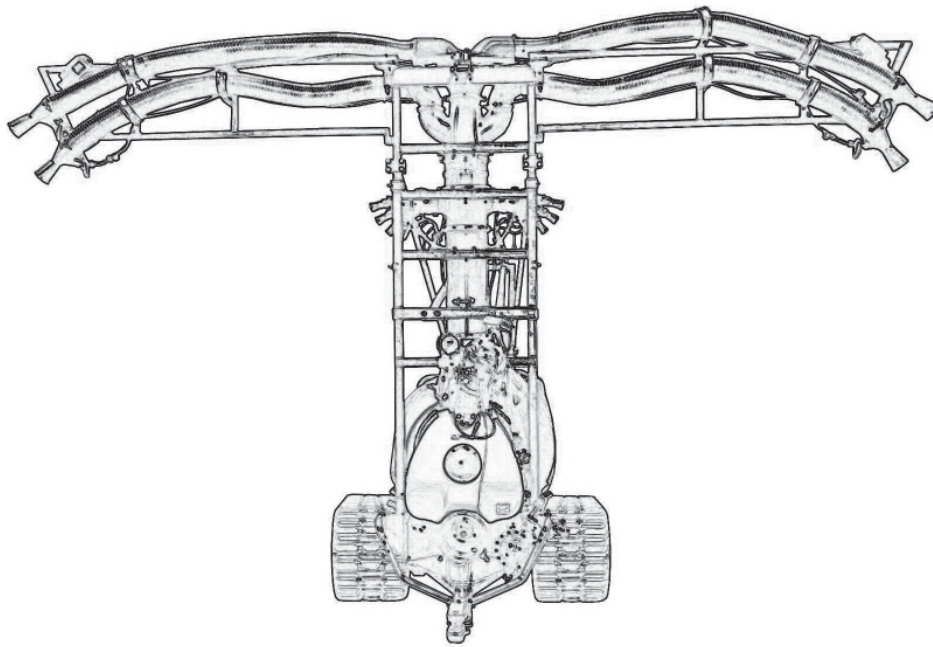


GEARMORE INC.

VENTURI AIR SPRAYERS



**Parts Manual For
Model T55AE-800
200 Gallon Capacity**

July 2013

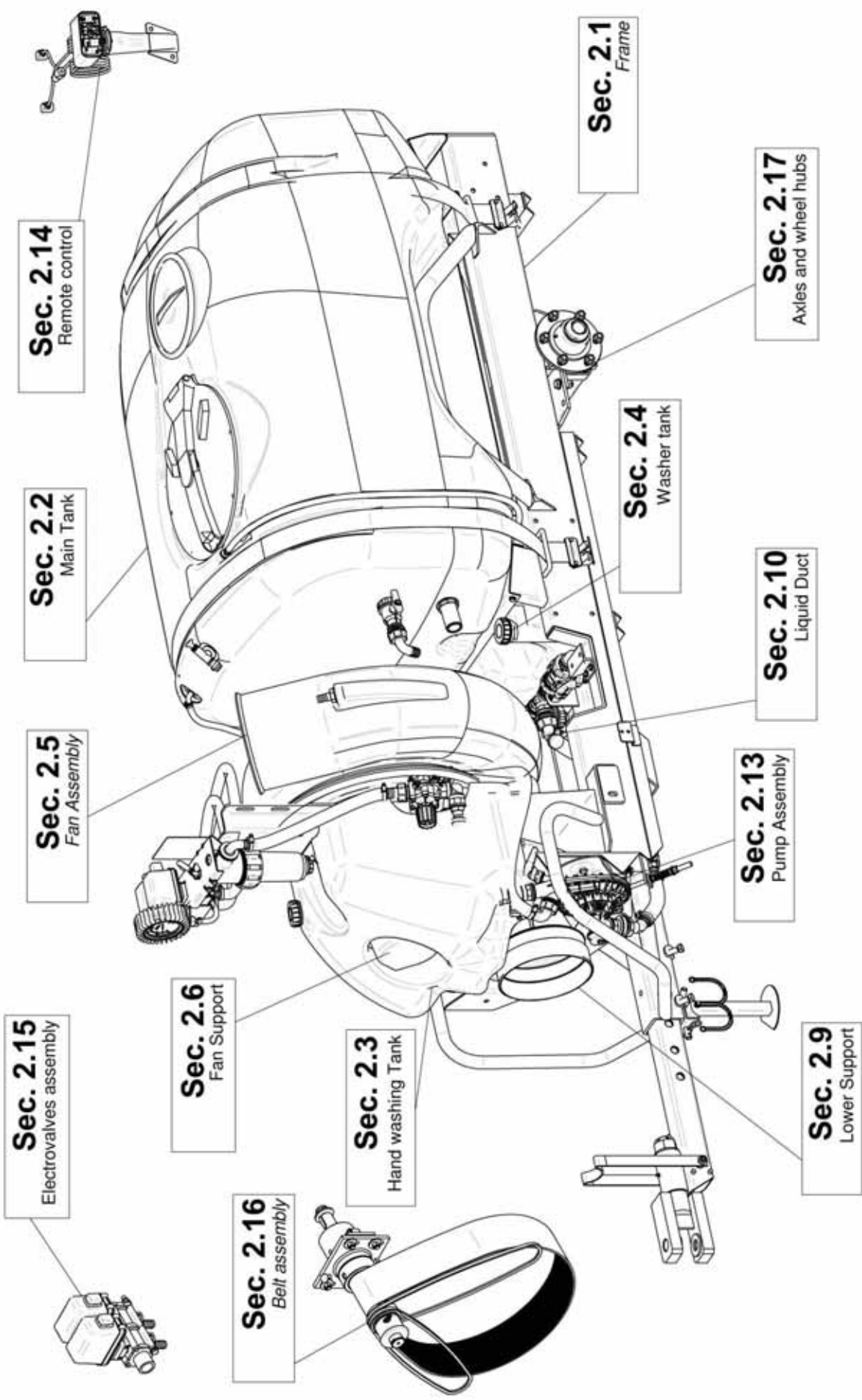


TABLE OF CONTENTS

<u>SECTION</u>	<u>DESCRIPTION</u>	<u>PAGE</u>
1	Introduction	1
1.1	Purchaser's Responsibility	1
1.2	Serial Number Information	1
2	Replacement Parts	2 - 28
2.1	Frame Assembly.....	2-4
2.2	Tank Assembly.....	5-6
2.3	Tank Fittings & Cover	7-8
2.4	Hand Wash & Ballast Tank	9
2.5	Fan Housing Assembly.....	10
2.6	Fan Support Assembly.....	11
2.7	Fan Support Breakdown.....	12
2.8	Belt Tension Roller	13
2.9	Lubrication Tubing.....	14
2.10	Main Pulley & Overrunning Clutch.....	15
2.11	Liquid Flow Path	16-18
2.12	Pressure Regulator & 3 Way Valve.....	19
2.13	Suction Filter Assembly.....	20
2.14	Pump Assembly	21-22
2.15	Control Valve	23
2.16	Electro Valves.....	24-25
2.17	Pump & Fan Belts	26
2.18	Axle & Wheel Hubs	27
2.19	Driveshaft	28
3	Limited Warranty	29

1 INTRODUCTION

This manual contains parts diagrams and replacement parts lists. Do not modify the equipment in any way. Unauthorized modification may impair the function and/or safety and could affect the life of the equipment.

It is the responsibility of the owner to make sure the machine is maintained properly, and that all parts are in working order.

Where replacement parts are necessary for periodic maintenance and servicing, genuine factory replacement parts ***MUST*** be used to restore your equipment to original specifications. The manufacturer will not be responsible for injuries or damages caused by use of unapproved parts and/or accessories.

The manufacturer reserves the right to make improvements to the machinery and parts at any time and at their discretion.

OPERATOR ORIENTATION - The directions left, right, front and rear, are as seen from the driver's seat and facing in the direction of travel.

1.1 PURCHASER'S RESPONSIBILITY

It is the responsibility of the purchaser and/or operator to.....

- Inspect the equipment and replace or repair any parts that are damaged or worn which under continued operation would cause damage, wear to other parts, or cause a safety hazard.
- Return the equipment or parts to the authorized dealer, from where it was purchased, for service or replacement of defective parts that are covered by warranty. (The factory may inspect equipment or parts before warranty claims are honored.)
- Payment of all costs incurred by the dealer for traveling to or transporting the equipment for warranty inspection and or claims.

1.2 MODEL / SERIAL NUMBER

NAME: _____

PURCHASED FROM: _____

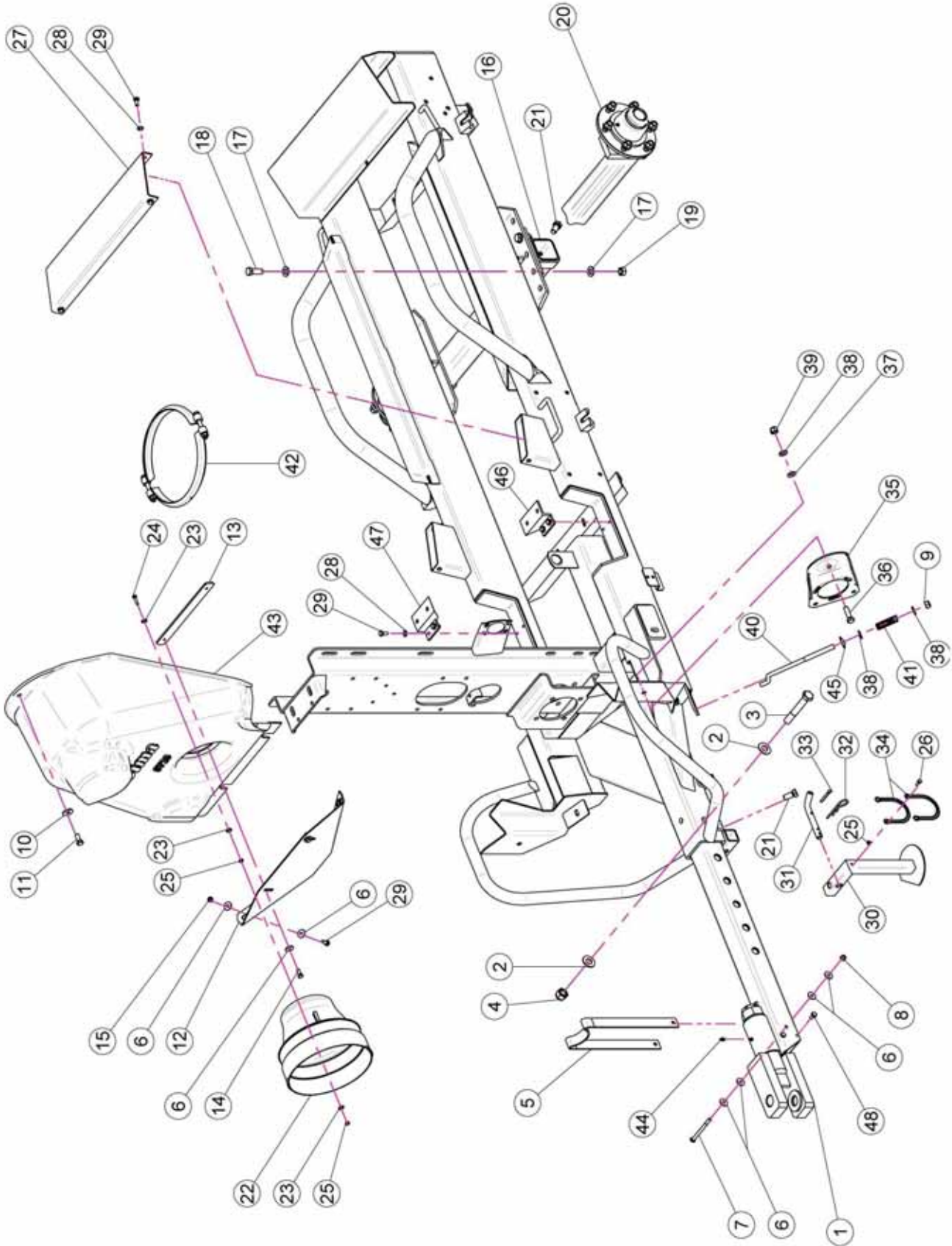
DATE OF PURCHASE: _____

MODEL NUMBER: _____

SERIAL NUMBER: _____

2 REPLACEMENT PARTS

2.1 MAIN FRAME ASSEMBLY



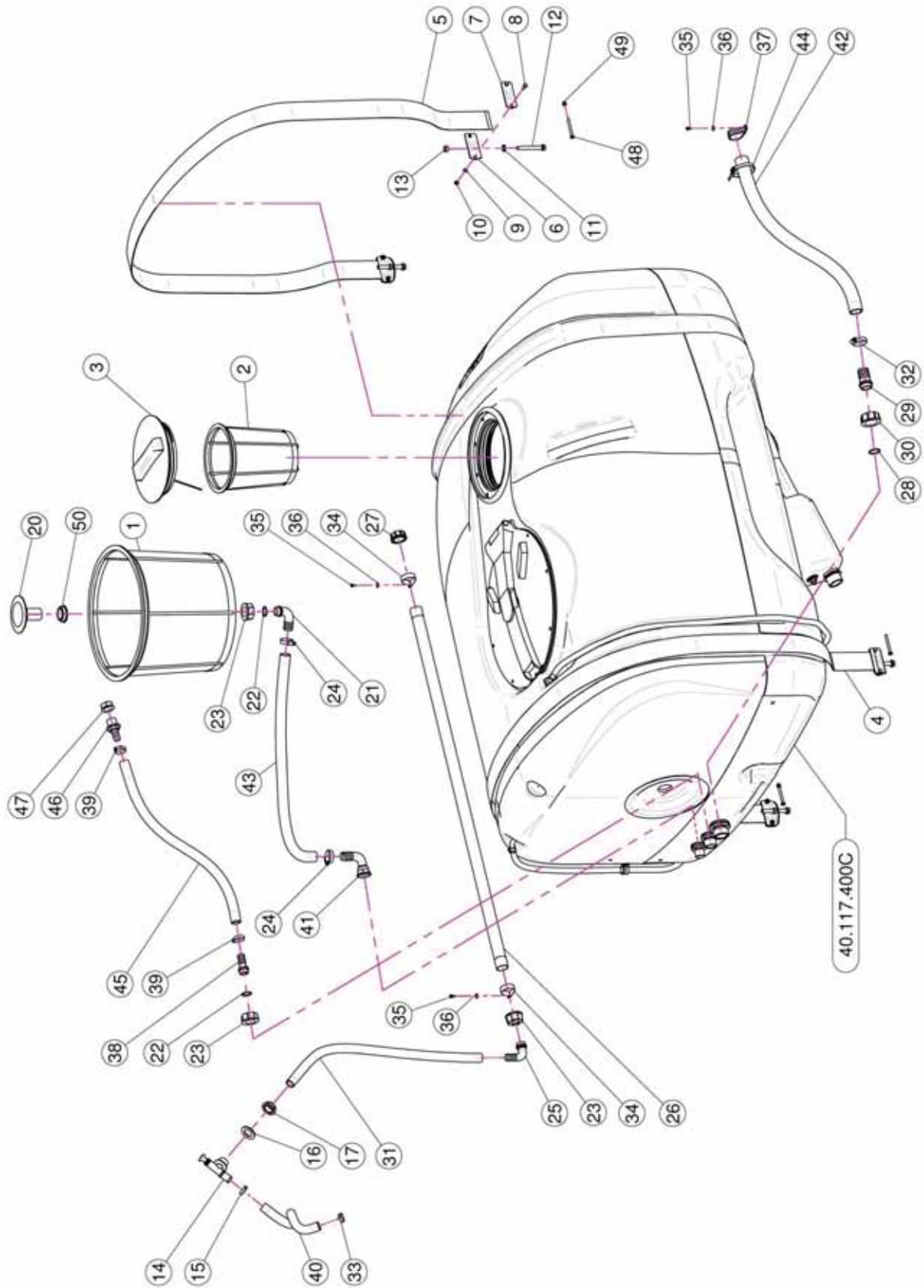
2.1 FRAME ASSEMBLY

<u>REF.</u>	<u>QTY.</u>	<u>PART NO.</u>	<u>DESCRIPTION</u>
MAIN FRAME			
1	1	40.136.300	Drawbar
2	2	RP.018.000	Washer
3	1	TE.018.120	Screw TE M18 x 120
4	1	DA.018.0AG	Self Locking Nut M18
5	1	20.409.000	Shaft Support
6	10	RP.008.024	Washer D.8 x 24
7	1	TE.008.100	Screw TE M8 x 100
8	1	DA.008.0AG	Self Locking Nut M8
9	1	DOT.12.5587	M12 Brass Nut
10	1	RP.010.030	Washer D.10 x 30 mm
11	1	TE.010.025T	Screw TE 10 x 25T
12	1	20.531.000	Carter Fixing Plate
13	1	20.532.000	Front Housing Blocking Plate
14	2	TE.008.025T	Screw TE M8 x 25
15	2	D0.08.5588G	Nut M8
16	1	See Pg. 27	Support Tube
17	8	RP.014.000	Washer D.14
18	4	TE.014.040T	Screw TE M14 x 40
19	4	D0.14.5588G	Nut M14 6S PG
20	2	40.020.150	Axle Assembly
21	6	TE.014.030T	Screw TE M14 x 30
22	1	02.441.000	Shaft Cone D.240
23	9	RD.006.000	Tab Washer D.6
24	3	TE.006.025T	Screw TE M6 x 25
25	7	D0.06.5588G	Nut M6
26	1	TE.006.016T	Screw TE M6 x 16
27	1	40.242.100	Plate
28	8	RP.008.000	Washer D.8
29	10	TE.008.020T	Screw TE 8 x 20
30	1	40.342.000	Extractable Jack Stand
31	1	20.505.000	Pin Jack Stand
32	1	00.100.004	Split Pin D.4
33	1	CP.006.040I	Pin D.6 Lg.40
34	2	21.183.000	Cap Stop
35	1	02.978.000SX	Bracket
36	1	TE.012.040T	Bolt TE M12 x 40
37	1	MT.012.000	Washer D.12
38	3	RP.012.000	Washer D.12
39	1	DA.012.0AG	Self Locking Nut M12
40	1	21.004.000	Belt Stretcher For Pump
41	1	02.964.000	CD 32 Pump Spring
42	1	05.813.000	Clamp D.275

2.1 FRAME ASSEMBLY

<u>REF.</u>	<u>QTY.</u>	<u>PART NO.</u>	<u>DESCRIPTION</u>
43	1	05.723.150	Front Housing For 1 Pump
44	1	ID.006.001	Greaser
45	1	21.113.000	Washer D.12 x 36
46	1	21.204.000	Left Clamp
47	1	21.203.000	Right Clamp
48	2	TE.008.016T	Screw TE M8 x 16

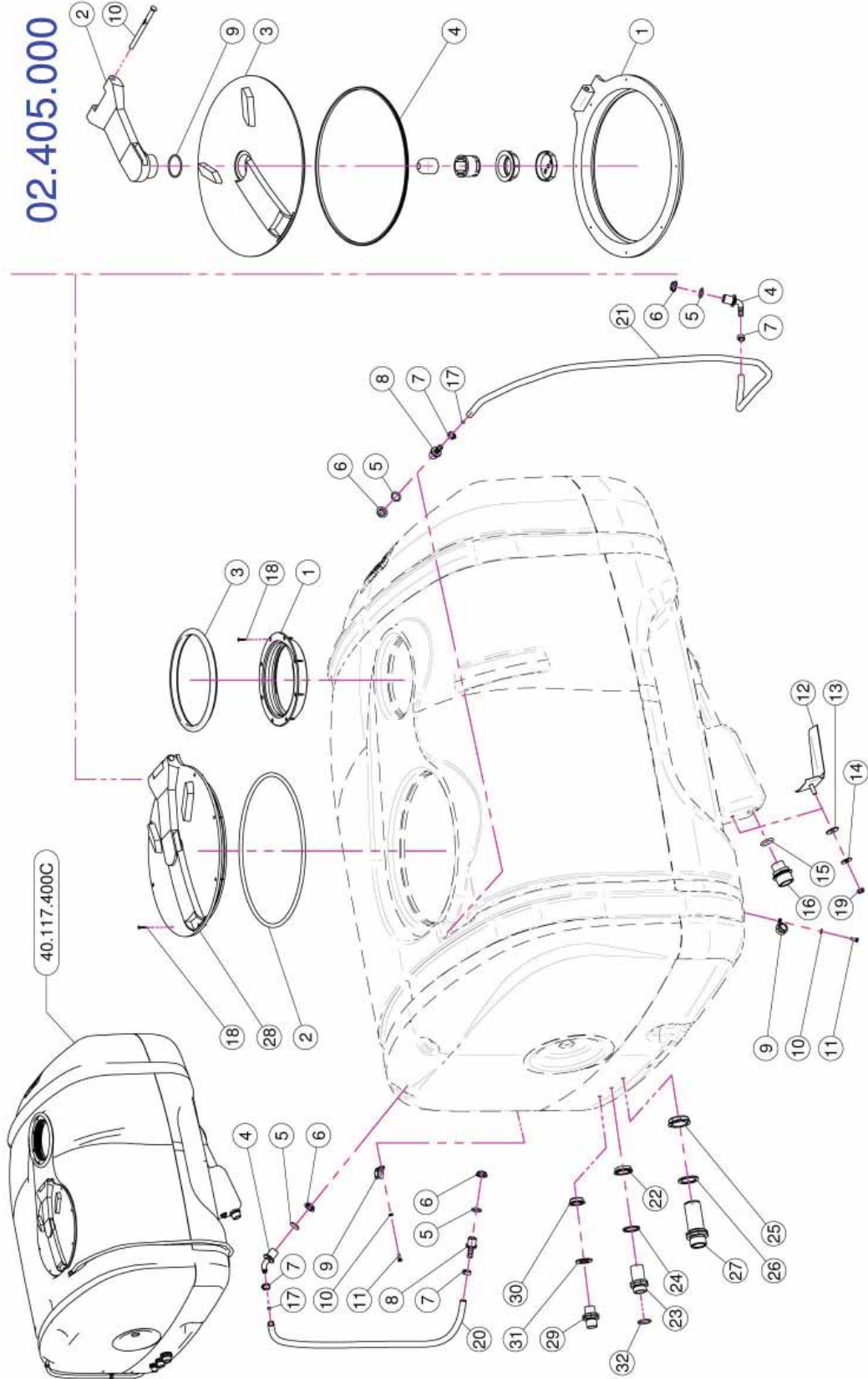
2.2 MAIN TANK ASSEMBLY



2.2 MAIN TANK ASSEMBLY

<u>REF.</u>	<u>QTY.</u>	<u>PART NO.</u>	<u>DESCRIPTION</u>
1	1	02.404.100	Basket Filter 400 x 330
2	1	02.298.000	Basket Filter D.204
3	1	02.476.100	Threaded Lid D.255 With Rope
4	1	02.481.280	Nylon Band 60 mm L=2800
5	1	02.481.253	Nylon Band 60 mm L=2530
6	4	20.512.000	Bracket
7	4	20.513.000	Shaped Plate
8	8	TE.006.020T	Screw TE M6 x 20
9	8	RP.006.000	Washer D.6
10	8	DA.006.0AG	Self Locking Nut - High M6
11	4	RP.010.000	Washer D.10
12	4	TE.010.080T	M10 x 80 Bolt
13	4	DOT.10.5587	M10 Brass Nut
14	1	02.135.000	Complete Piston Valve
15	1	FC.023.5.025	Hose Clamp 23.5 - 25
16	1	02.032.000	Gasket D.26 x 40 SP.2
17	1	00.541.000	Nut 3/4"
20	1	00.131.000	1" Vortex Damper Drive
21	1	00.055.037	D.25 Hosetail
22	2	OR.000.132	23.81 x 2.62 O-Ring Gasket
23	3	00.055.24.2	1" Fly Nut
24	2	F0.023.035I	Stainless Steel Clip
25	1	00.055.038	Curved Union With R.H. D.19
26	1	40.035.001	Perforated Hose 1" L=1200
27	1	TF.001.000	Packing
28	1	OR.003.112	O-Ring D.28.24 x 2.62
29	1	00.058.028	Straight Hose R.H. D.30
30	1	00.058.006	1" 1/4 Fly Nut
31	1	02.212.000	Hose D.19 x 26 L=750 (Per Foot)
32	1	F0.025.040I	Stainless Steel Clip
33	1	FC.022.5.024	Hose clamp 22.5 - 24
34	2	FN.035.000	Sticker
35	3	TE.005.010I	Screw TE M5 x 10
36	3	RP.005.015I	Washer D.5 x 15
37	1	FG.040.000	Sticker
38	1	00.055.022	Straight Hose R.H. D.19
39	2	FC.027.5.029	Hose Clamp 27.08 - W8
40	1	02.372.000	Hose D.19 L=500 (Per Foot)
41	1	20.794.000	Pipe 90° R.H. 25 3/4" GAS F
42	1	02.238.000	Hose D.30 L=800 (Per Foot)
43	1	20.809.000	Hose D.25 L=1200 (Per Foot)
44	1	02.355.000	Nylon Assembly Clamp
45	1	02.212.000	Hose D.19 L=800 (Per Foot)
46	1	00.418.000	Straight Union R.H. 19 3/4 GAS
47	1	02.182.100	Female 3/4" Cap
48	4	TE.006.060I	INOX M6 x 60 TE Screw
49	4	DC.06.5721I	Nut DIN 1587 6 x 1-6-10
50	1	00.542.000	Nut 1"

2.3 TANK FITTINGS & COVERS



2.3 TANK FITTINGS & COVERS

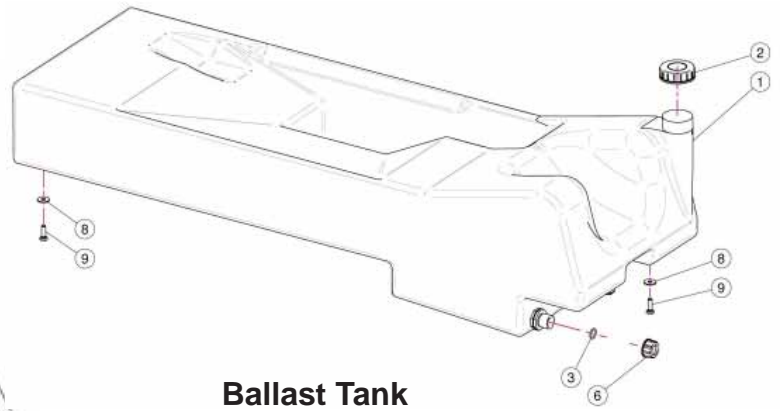
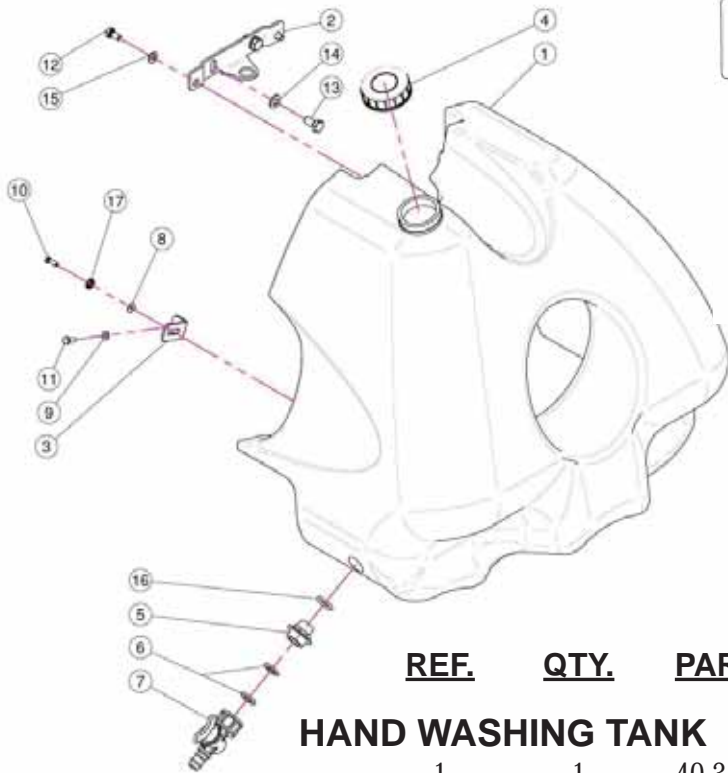
<u>REF.</u>	<u>QTY.</u>	<u>PART NO.</u>	<u>DESCRIPTION</u>
1	1	02.477.000	Threaded Ring D.255
2	1	02.405.000.L	Gasket
3	1	02.477.000.A	Threaded Ring Gasket D.255
4	2	02.457.000	Hosetail D.13 90° M. 1/2"
5	4	OR.004.081	20.22 x 3.53 O-Ring Gasket
6	4	02.458.000	Lock Ring 1/2"
7	4	FC.016.5.018	Hose Clamp 16.5 - 18
8	2	02.482.000	Hosetail Male Threaded 1/2"
9	2	FG.018.000	Sticker
10	2	RP.006.000	Washer D.6
11	2	TE.006.016T	Screw TE M6 x 16
12	1	20.498.002	Stainless Steel Anti-Vortex
13	1	20.436.000	Special Garnishing For Anti-Whirl
14	1	RP.010.030	Washer D.10 x 30 mm
15	1	OR.000.507	27 x 5 O-Ring Gasket
16	1	00.045.012	1" 1/4 M - 1" M Reducer Nipple
17	2	02.478.000	Red Floating Ball D.8.5
18	16	TAS.04.2.025I	Self Threaded Screw 4.2 x 25
19	1	DOT.10.5587	M10 Brass Nut
20	1	02.378.000	Hose Vitre O.D. 12 x 16 L=850 (Per Foot)
21	1	02.378.000	Hose Vitre O.D. 12 x 16 L=1600 (Per Foot)
22	1	00.542.000	Nut 1"
23	1	00.055.134.L	Cutted Long Nipple 1" / 1" GAS
24	1	02.066.000	Gasket D.33 x 45
25	1	00.543.000	Nut 1" 1/4 GAS
26	1	02.033.000	Gasket
27	1	00.345.000	Nipple 1" 1/4 + 1" 1/4 GAS
28	1	02.405.000	Hinged Tank Lid
29	1	02.380.000	Nipple 3/4"
30	1	00.541.000	Nut 3/4"
31	1	02.032.000	Gasket D.26 x 40 Sp. 2
32	1	OR.004.118	29.75 x 3.53 O-Ring Gasket

02.405.000 MAIN LID ASSEMBLY

1	1	02.405.000.B	Base Ring
2	1	02.405.001	Arm
3	1	02.405.000.A	Gripping Plate
4	1	02.405.002	Shaped Gasket
9	1	OR.000.512	51 x 3.5 O-Ring Gasket
10	1	20.787.000.D	Pin

2.4 HAND WASH & BALLAST TANKS

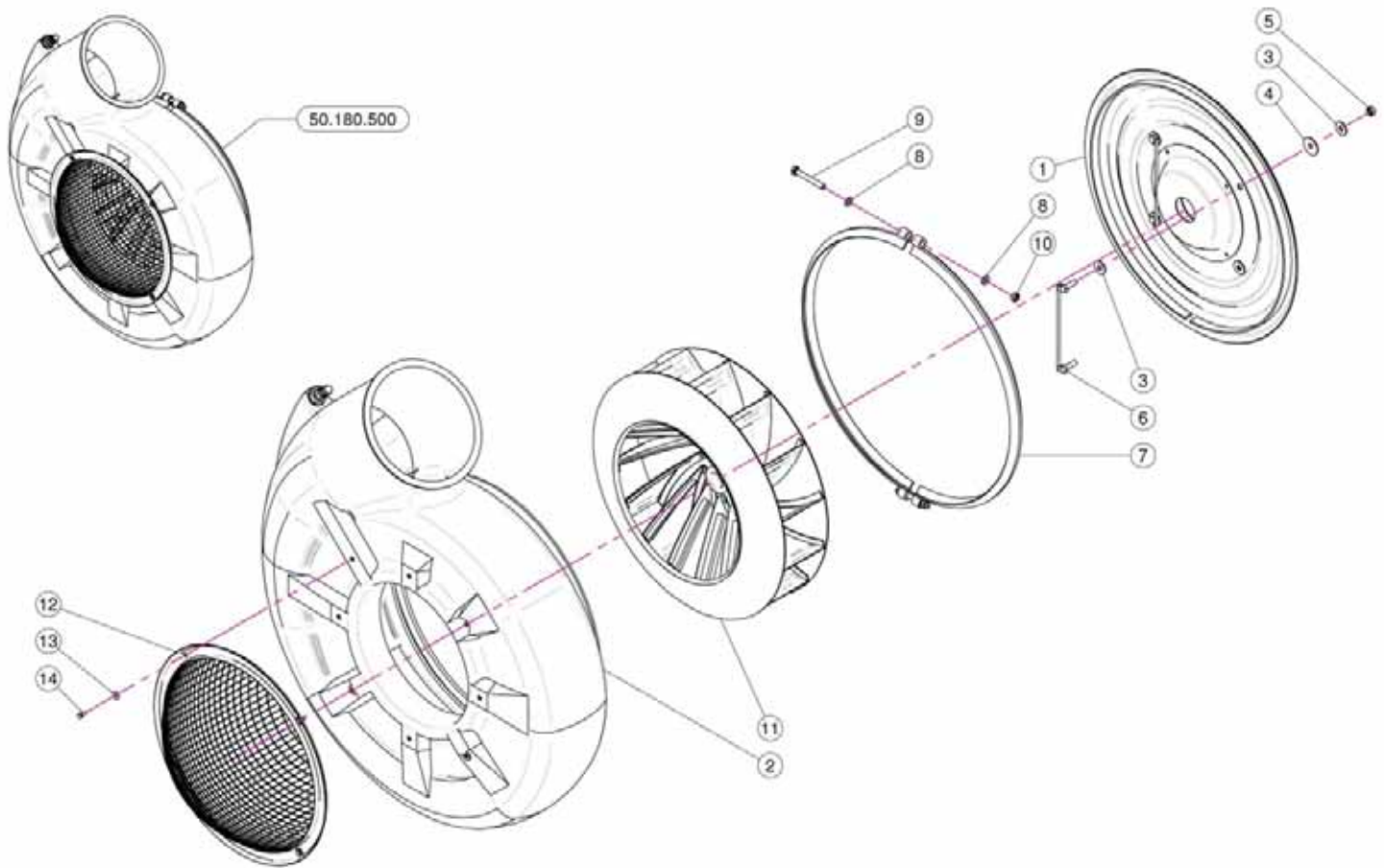
Hand Washing Tank



Ballast Tank

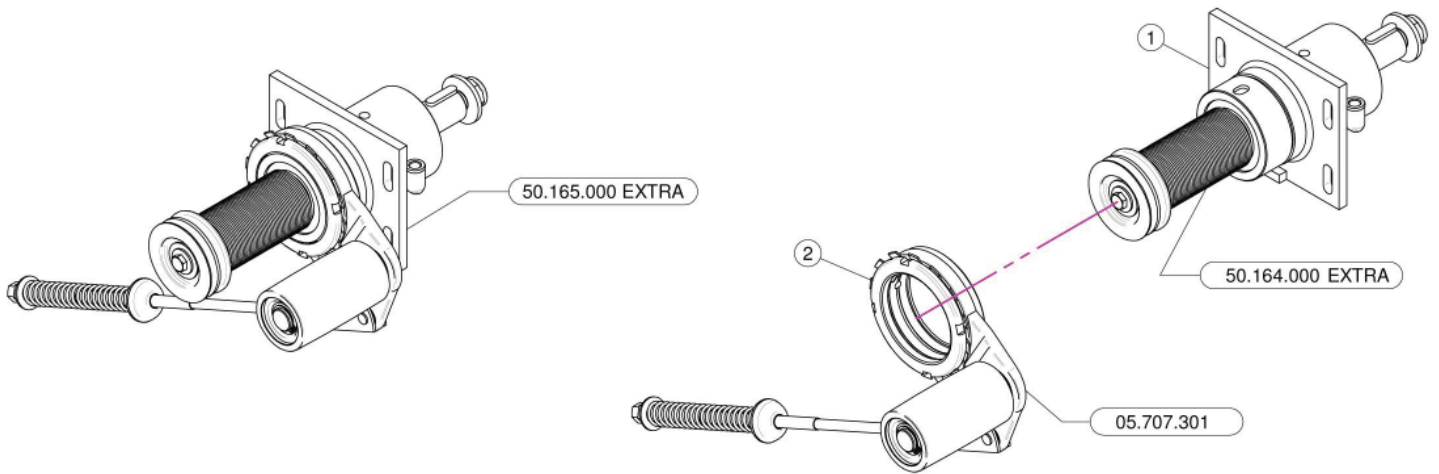
<u>REF.</u>	<u>QTY.</u>	<u>PART NO.</u>	<u>DESCRIPTION</u>
HAND WASHING TANK			
1	1	40.322.000	Hand Washing Tank
2	1	40.323.000	Fixing Bracket
3	2	40.324.100	Bracket
4	1	02.460.000	Female Threaded Tank Lid
5	1	00.055.044	Nipple 1/2" - 3/4" GAS
6	2	02.030.010	Gasket
7	1	02.497.000	3/4" Female Valve
8	2	RP.005.015I	Washer D.5 x 15
9	2	RP.006.000	Washer D.6
10	2	TE.005.016I	Screw TE M5 x 16
11	2	TE.006.016T	Screw TE M6 x 16
12	2	TE.008.016T	Screw TE M8 x 16
13	2	TE.010.020T	Screw TE M10 x 20
14	2	RP.010.000	Washer D.10
15	2	RP.008.000	Washer D.8
16	1	OR.004.081	20.22 x 3.53 O-Ring Gasket
17	2	RD.006.000	Tab Washer D.6
BALLAST TANK			
1	1	40.248.000	Washing Tank Lt. 80
2	1	02.460.000	Female Threaded Tank Lid
3	1	OR.000.121	13.1 x 18.34 x 2.62 O-Ring Gasket
6	1	00.055.045	3/4" Fly Nut
8	4	RP.008.024	Washer D.8 x 24
9	4	TE.008.025T	Screw TE M8 x 25

2.5 FAN HOUSING ASSEMBLY



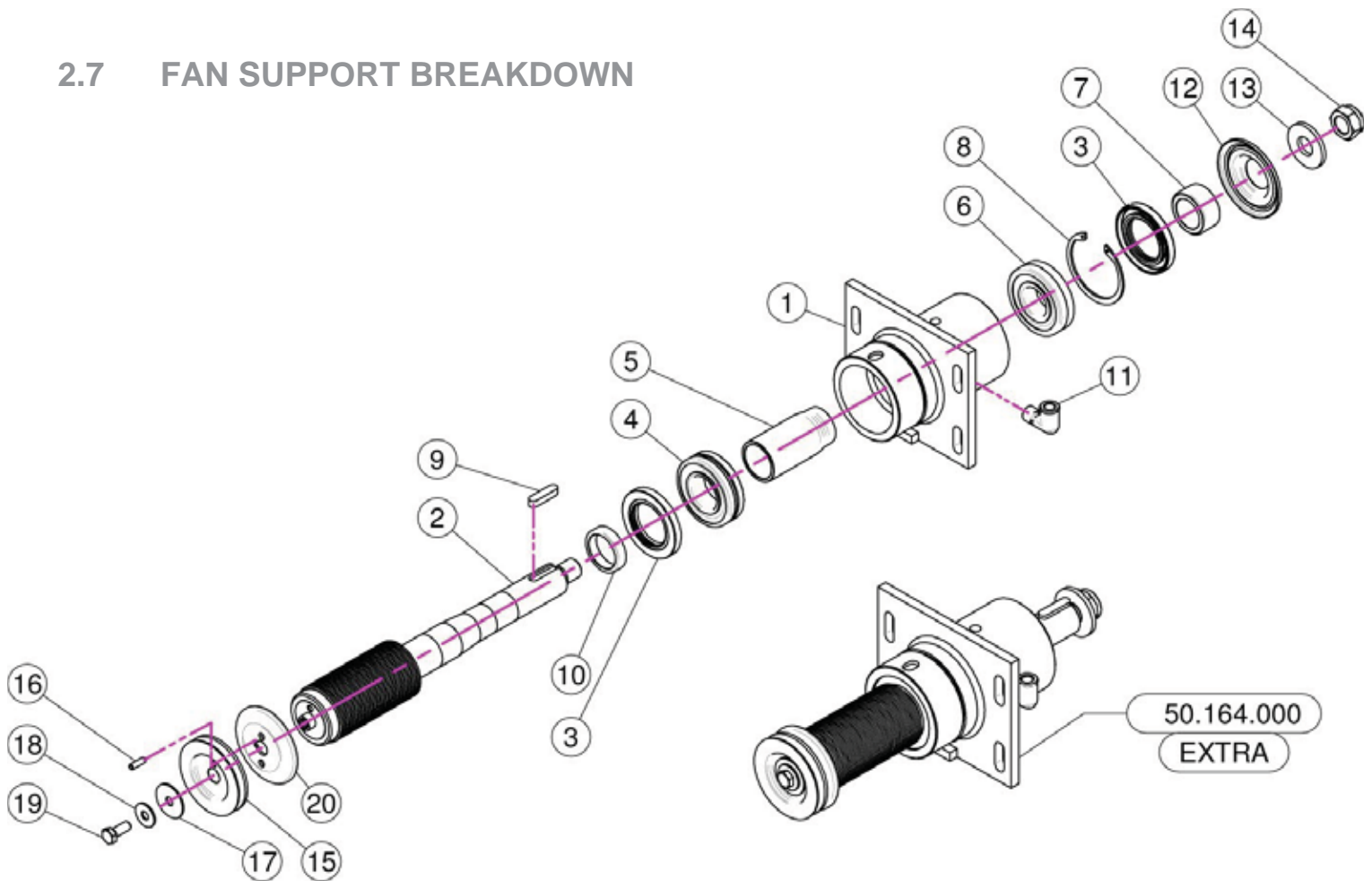
<u>REF.</u>	<u>QTY.</u>	<u>PART NO.</u>	<u>DESCRIPTION</u>
1	1	50.172.000	Fan 55 Cover
2	1	50.011.000	55 Fan Housing
3	8	RP.010.030	Washer D.10 x 30 mm
4	4	RP.010.040	Washer D.10 x 40
5	4	D0.10.5587G	Nut M10
6	2	20.088.000	Back Cover Bracket
7	1	50.004.000Z	D.610 Clamp For Female Screw
8	4	RP.010.000	Washer D.10
9	2	TE.010.080T	Bolt M10 x 80
10	2	DOT.10.5587	M10 Brass Nut
11	1	50.012.000	Fan 550
12	1	05.654.100	Fan Convex Net Protection
13	4	RP.006.018	Washer D.6 x 18
14	4	TE.006.016T	Screw TE M6 x 16

2.6 FAN SUPPORT ASSEMBLY



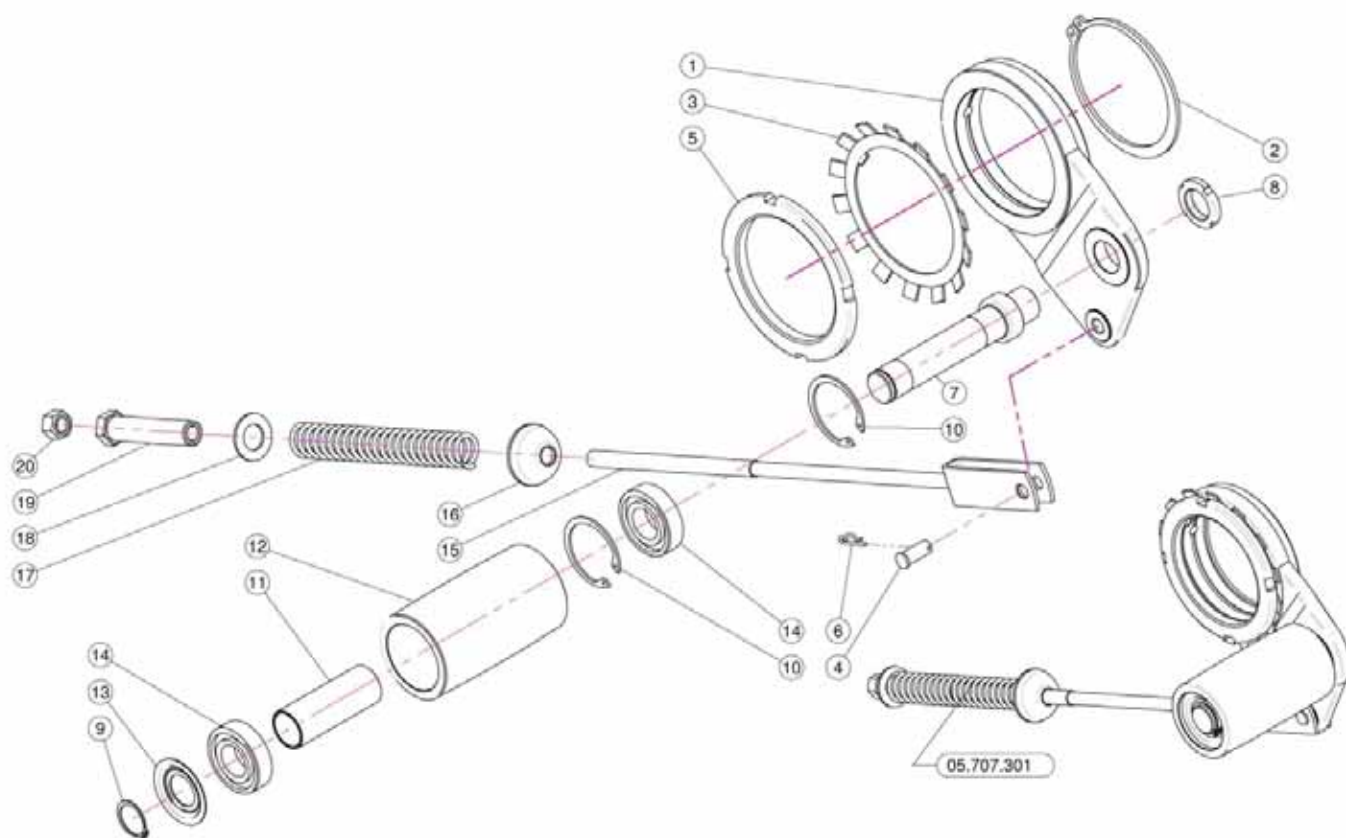
<u>REF.</u>	<u>QTY.</u>	<u>PART NO.</u>	<u>DESCRIPTION</u>
1	1	50.164.000	Fan Support With Shaft - Pul D.66 No Disengagement
2	1	05.707.301	Automatic Belt Stretcher

2.7 FAN SUPPORT BREAKDOWN



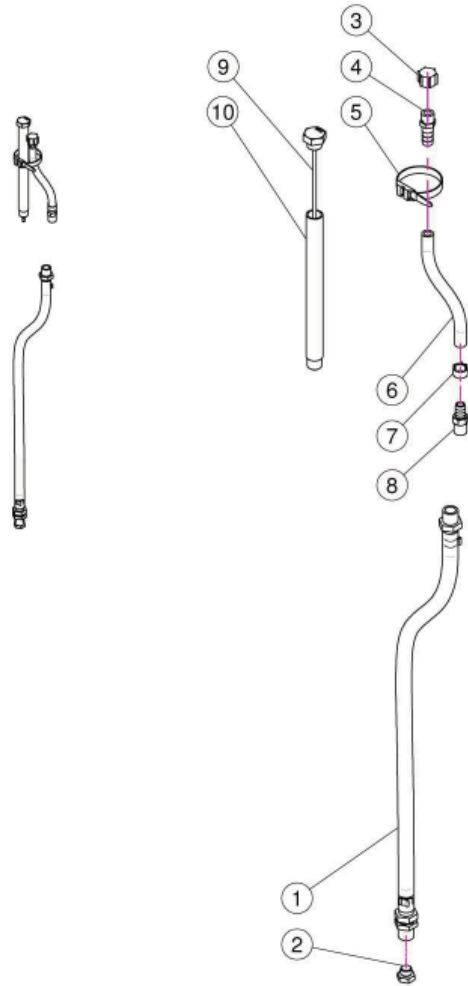
<u>REF.</u>	<u>QTY.</u>	<u>PART NO.</u>	<u>DESCRIPTION</u>
1	1	50.110.000	Nude Fan Support
2	1	50.119.066	Shaft
3	2	BASL.50.80.10	Viton Lip Seals -IEL (50-80-10)
4	1	K0.022.208	Roller Bearing 22-208
5	1	50.112.000	Spacer
6	1	K0.021.307	Roller Bearing 21-307
7	1	50.113.000	Spacer
8	1	I0.080.000	Internal D.80 Circlip
9	1	L.10.08.40	Feather Key 10 x 8 x 40
10	1	50.114.000	Spacer
11	1	20.789.000	Male/Female 90° Elbow
12	1	50.115.000	Dust Cover
13	1	20.820.000	Washer
14	1	DA.022.0BF	Self-Locking Nut M22 x 1.5
15	1	05.816.000	Pulley For Pump D.88 (1 x 3V)
16	1	SE.006.020	Spring Pin D.6 x 20
17	1	RP.010.040	Washer D.10 x 40
18	1	RP.010.028	Washer D.10 x 28
19	1	TE.010.025FT	Bolt TE M10 x 25
20	1	02.723.000A	Semi Pulley D.88

2.8 BELT TENSION ROLLER



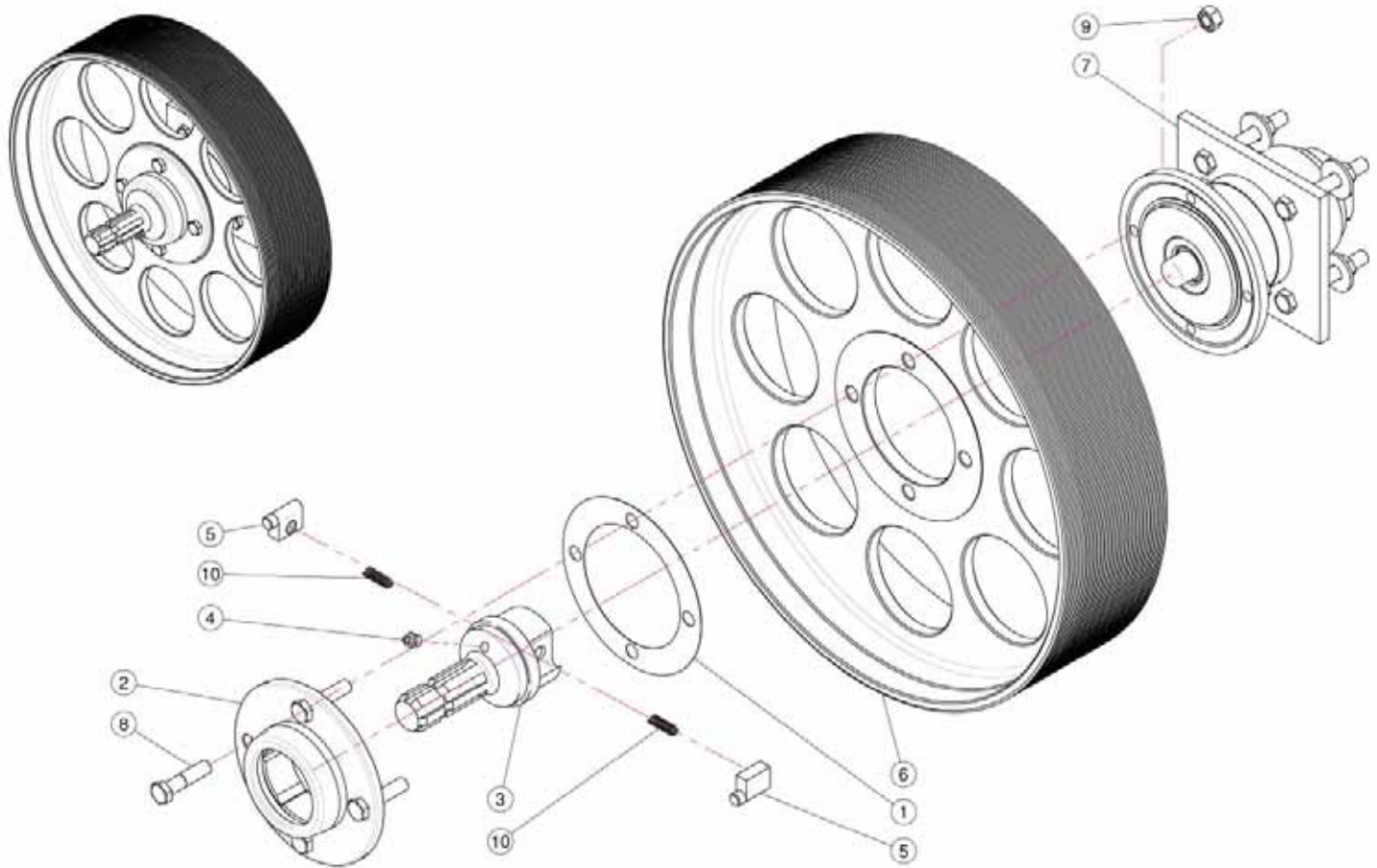
<u>REF.</u>	<u>QTY.</u>	<u>PART NO.</u>	<u>DESCRIPTION</u>
1	1	05.696.000	Idler Support
2	1	E0.100.000	External D.100 Circlip
3	1	MB.020.000	Tooth Lock Washer
4	1	04.593.000	Pin
5	1	05.704.000	Register Nut
6	1	00.100.002	Clip
7	1	05.697.000	Pivot
8	1	KM.005.000	Nut KM5
9	1	E0.025.000	External D.25 Circlip
10	2	I0.052.000	Internal D.52 Circlip
11	1	05.631.101	Spacer
12	1	05.630.000	Roller
13	1	04.585.000	Anti-Dust Cover
14	2	K6.205.2RS	Roller Bearing 6205-2RS
15	1	05.653.000	Belt Stretcher Fork
16	1	20.260.000	Special Washer D.12
17	1	05.647.100	Spring
18	1	RP.019.000	Washer D.19
19	1	04.583.000	Special Screw
20	1	D0.12.5587G	M12 Nut

2.9 LUBRICATION TUBING



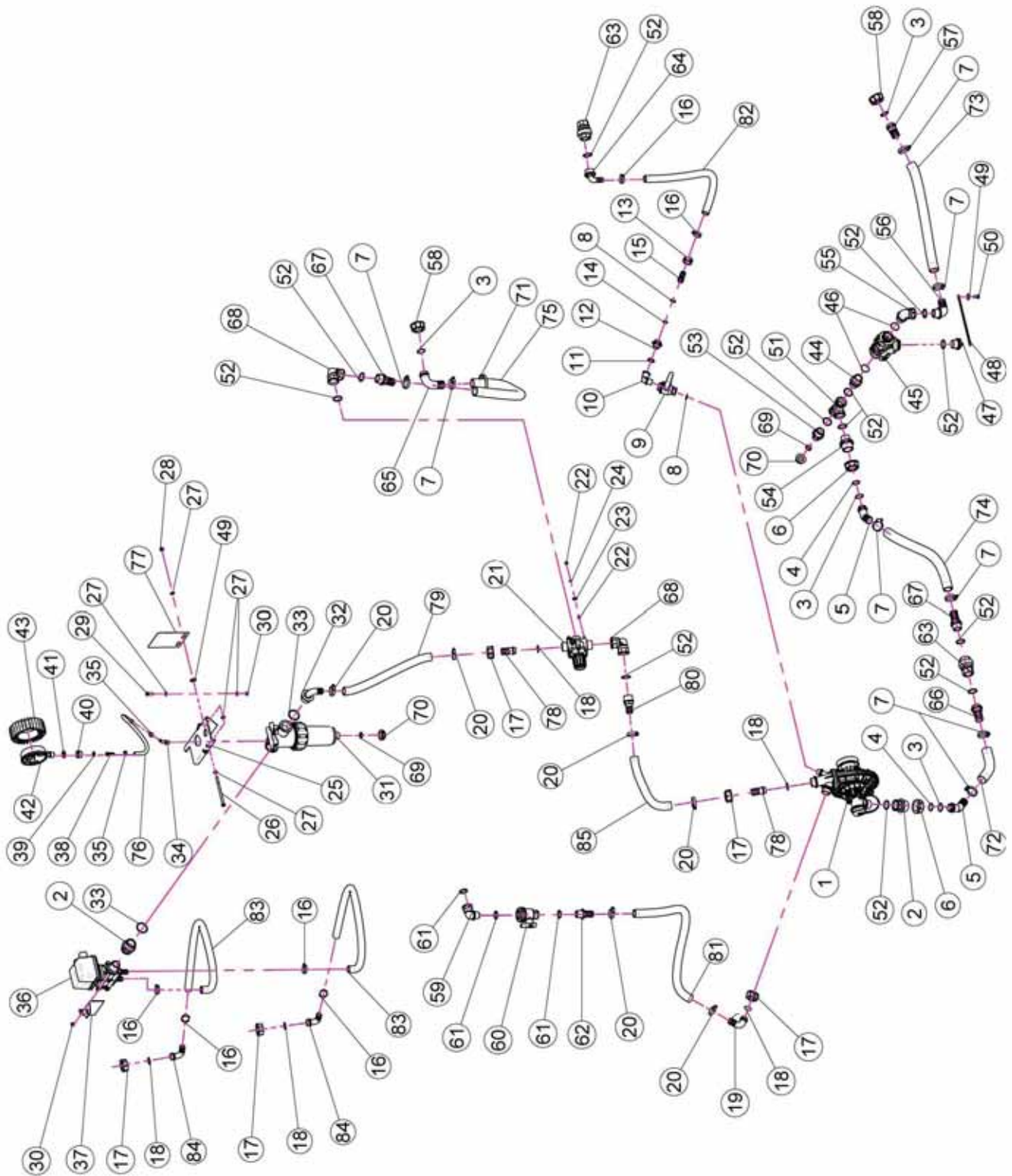
<u>REF.</u>	<u>QTY.</u>	<u>PART NO.</u>	<u>DESCRIPTION</u>
1	1	20.790.000	Drain Pipe 3/8"
2	1	40.266.000	Oil Exhaust Plug
3	1	02.013.000	Plug G1/4"
4	1	00.414.100	Straight Hose D.11 1/4" With Bleed
5	1	02.355.000	Nylon Assembly Clamp
6	1	02.217.000	Hose D.8 x 13 L=250 (Per Foot)
7	1	FC.014.5.016	Hose Clamp
8	1	20.792.000	Straight Hose D.11 G 1/4" For Breather
9	1	40.269.000	Filling Plug With Dipstick L=215
10	1	40.272.000	Filling Pipe L=201

2.10 MAIN PULLEY & OVERRUNNING CLUTCH



<u>REF.</u>	<u>QTY.</u>	<u>PART NO.</u>	<u>DESCRIPTION</u>
1	1	04.719.000	Gasket
2	1	04.066.000	Body
3	1	03.701.000	Rotor
4	1	ID.010.001	Grease Nipple
5	2	02.502.002	Pin
6	1	00.480.J50	Pulley Diameter 480 J 50
7	1	05.632.01C	Clutch
8	4	TE.012.050F	Bolt M12 x 50
9	4	DO.12.5587F	Nut M12 PG 5587F
10	2	02.502.001	Spring

2.11 LIQUID FLOW PATH



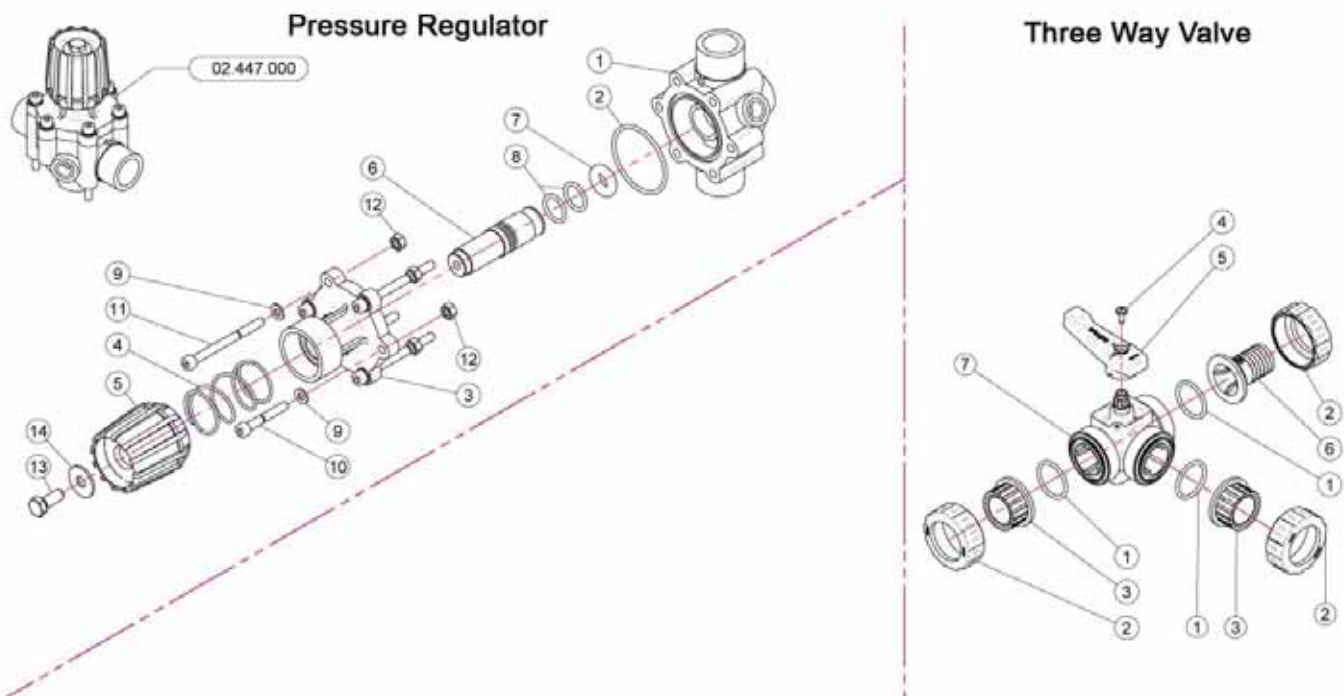
2.11 LIQUID FLOW PATH

<u>REF.</u>	<u>QTY.</u>	<u>PART NO.</u>	<u>DESCRIPTION</u>
1	1	<i>See Pg. 21</i>	Pump
2	2	02.374.000	M. / F. 1" F / 1" 1/4 M Reduction
3	4	OR.003.112	O-Ring D.28.24 x 2.62
4	2	OR.003.106	O-Ring D.26.65 x 2.62
5	2	02.339.000	45° Hosetail
6	2	00.493.000	1" 1/4 Fly Nut
7	8	F0.025.040I	Stainless Steel Clip
8	2	OR.000.121	15.88 x 2.62 O-Ring Gasket
9	1	21.147.000	Ways Valve 1/2" F/F
10	1	21.180.000	Elbow 90° 1/2 M - 1/2 F
11	1	OR.004.081	20.22 x 3.53 O-Ring Gasket
12	1	00.055.044	Nipple 1/2" - 3/4" GAS
13	1	00.055.045	3/4" Fly Nut
14	1	OR.000.117	13.1 x 18.34 x 2.62 O-Ring Gasket
15	1	21.184.000	Straight Union 3/4" R.H. 20
16	6	FC.027.5.029	Hose Clamp 27.08 - W8
17	5	00.055.24.2	1" Fly Nut
18	5	OR.000.132	23.81 x 2.62 O-Ring Gasket
19	1	00.055.037	D.25 Hosetail
20	6	F0.023.035I	Stainless Steel Clip
21	1	02.447.000	3 Way Valve
22	8	D0.06.5588G	Nut M6
23	4	RP.006.018	Washer D.6 x 18
24	4	RP.006.000	Washer D.6
25	1	20.424.300	Bracket For Regulation Group
26	2	TE.008.130	Screw M8 x 130
27	10	RP.008.000	Washer D.8
28	2	DA.008.0AG	Self Locking Nut M8
29	2	TE.008.025T	Screw TE M8 x 25
30	4	D0.08.5588G	Nut M8
31	1	02.450.110	Line Filter 1" 1/4 Female
32	1	20.819.000	D.25 Hosetail
33	2	OR.000.144	O-Ring D.39.69 x 3.53
34	1	21.084.000	Hosetail 90° WES 8 / R1/4
35	2	FC.013.5.015	Hose Clamp
36	1	02.390.09C	Electro Valves
37	1	40.304.000	Fixing Bracket
38	1	02.379.020	Straight Union R.H. 10
39	1	20.769.000	Gasket D.19.2/11.5 x 2.5
40	1	02.287.000	Fly Nut 1/2"
41	1	24.072.000	Brass Fly Nut 1/2"
42	1	02.445.000	Pressure Gauge Ø 100 INOX 0-6 Bar
43	1	02.470.000	Pressure Gauge Guard

2.11 LIQUID FLOW PATH

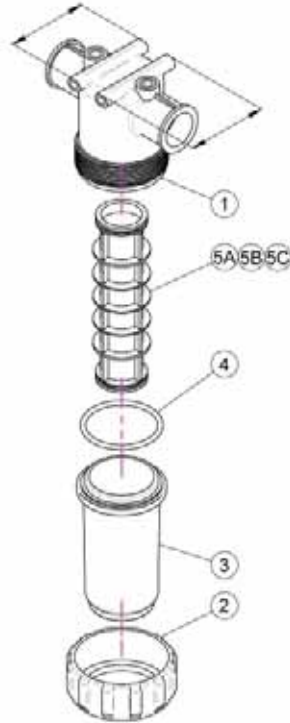
<u>REF.</u>	<u>QTY.</u>	<u>PART NO.</u>	<u>DESCRIPTION</u>
44	1	00.055.034	Nipple 1" / 1" GAS
45	1	21.058.100	Three Ways Valve Complete
46	2	OR.002.125	31.47 x 1.78 O-Ring Gasket
47	1	21.182.000	Packing 1" M
48	1	21.183.000	Cap Stop
49	3	RP.008.024	Washer D.8 x 24
50	1	TE.008.016T	Screw TE M8 x 16
51	1	02.274.000	Female Tesse 1"
52	12	OR.004.118	29.75 x 3.53 O-Ring Gasket
53	1	02.293.000	1" M - 3/4" M Reducer Nipple
54	1	00.045.012	1' 1/4 M - 1" M Reducer Nipple
55	1	24.054.000	Hosetail M-F 1"
56	1	00.465.000	Hosetail D.30 1" GAS
57	1	00.058.028	Straight Hose R.H. D.30
58	2	00.058.006	1" 1/4 Fly Nut
59	1	24.069.000	Pipe Elbow 3/4" M-F
60	1	02.395.000	Valve 3/4" GAS F.F. Ball
61	3	OR.000.134	O-Ring D.25.8 x 3.53
62	1	20.793.000	Hosetail R.H. D.25 3/4" GAS M.
63	2	21.149.000	Valve 1" F-F.
64	1	21.193.000	Hosetail 90° 1" R.H.
65	1	00.058.004	D.30 Hosetail
66	1	00.422.100	Male Connector RH 30 1" GAS
67	2	00.422.000	Male Connector RH 30 1" GAS
68	2	02.291.000	Female Hosetail Thread 1"
69	2	02.030.010	Gasket
70	2	02.182.000	Female 3/4" Cap
71	6	02.355.000	Nylon Assembly Clamp
72	1	20.852.000	Hose D.30 x 41 L=300 (Per Foot)
73	1	20.852.000	Hose D.30 x 41 L=600 (Per Foot)
74	1	20.852.000	Hose D.30 x 41 L=480 (Per Foot)
75	1	20.852.000	Hose D.30 x 41 L=1300 (Per Foot)
76	1	02.217.000	Hose D.8 x 13 L=400 (Per Foot)
77	1	50.355.100	Product Note Support
78	2	00.055.021	Straight Hose R.H. D.25
79	1	20.770.000	Hose D.25 L=410 (Per Foot)
80	1	02.403.000	Straight Hose R.H. D.25 - 1"
81	1	20.809.000	Hose D.25 L=1350 (Per Foot)
82	1	02.212.000	Hose D.19 x 28 L=1200 (Per Foot)
83	2	02.212.000	Hose D.19 L=900 (Per Foot)
84	2	00.055.038	Curved Union With R.H. D.19
85	1	20.809.000	Hose D.25 x 32 L=300 (Per Foot)

2.12 PRESSURE REGULATOR & 3 WAY VALVE



<u>REF.</u>	<u>QTY.</u>	<u>PART NO.</u>	<u>DESCRIPTION</u>
PRESSURE REGULATOR			
1	1	02.447.001	Body For Regulation Valve
2	1	OR.003.193	O-Ring Gasket 48.89 x 2.62
3	1	02.447.009	Upper Flange
4	1	02.447.011	Spring
5	1	02.447.010	Regulation Valve Knob
6	1	02.447.014	Pin
7	1	02.447.005	Special O-Ring For Gate 2447
8	2	OR.003.068	O-Ring Gasket 17.12 x 2.62
9	6	RP.006.000	Washer D.6
10	2	TCE.006.040	Bolt TCE M6 x 40
11	4	TCE.006.070	Bolt TCE M6 x 70
12	6	D0.06.5588G	Nut M6
13	1	TE.008.025I	INOX 8 x 25 Screw
14	1	RP.008.024I	INOX Washer D.8 x 24
3-WAY VALVE			
1	3	OR.004.137	O-Ring D.34.52 x 3.53
2	3	21.058.007	Valve Union Nut
3	2	21.058.006	Valve End Connector
4	1	TA.05.5.016	Self Threaded Screw M5.5 x 16
5	1	21.058.003	Valve Handle
6	1	21.058.009	Rubber Holder D.30
7	1	21.058.110	Body of Three Ways Valve

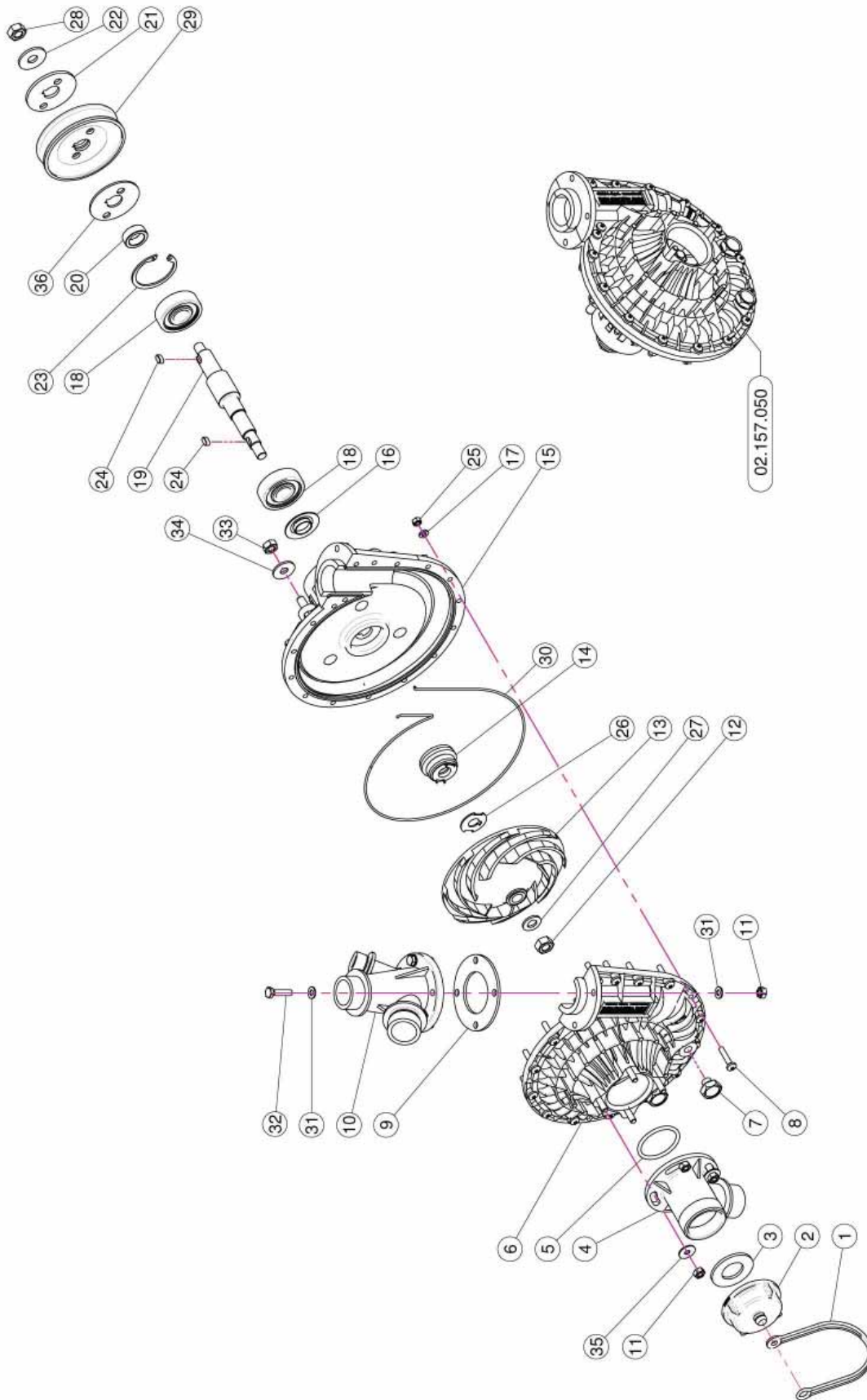
2.13 SUCTION FILTER ASSEMBLY



02.450.010

<u>REF.</u>	<u>QTY.</u>	<u>PART NO.</u>	<u>DESCRIPTION</u>
1	1	02.450.001	Line Filter Body
2	1	02.450.003	Ring Nut Filter In Line
3	1	02.450.011	Lid Filter With Unloading
4	1	OR.000.178	O-Ring D.74.63 x 5.33
5A	1	02.450.004C	Cartridge w/ O-Ring 50 Mesh (Blue)
5B	1	02.450.204C	Cartridge w/ O-Ring 80 Mesh (Grey)
5C	1	02.450.104C	Cartridge w/ O-Ring 32 Mesh (White)

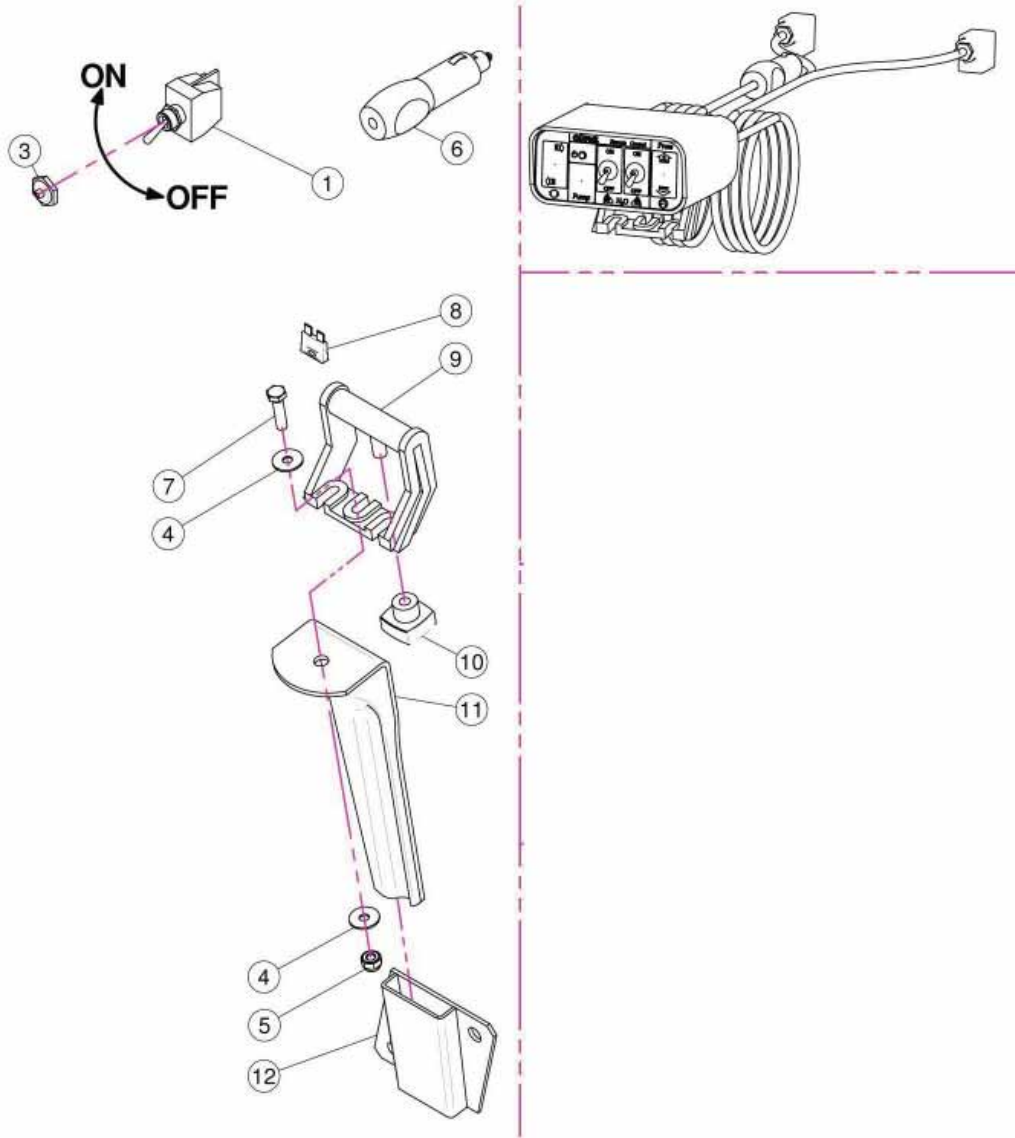
2.14 PUMP ASSEMBLY



2.14 PUMP ASSEMBLY

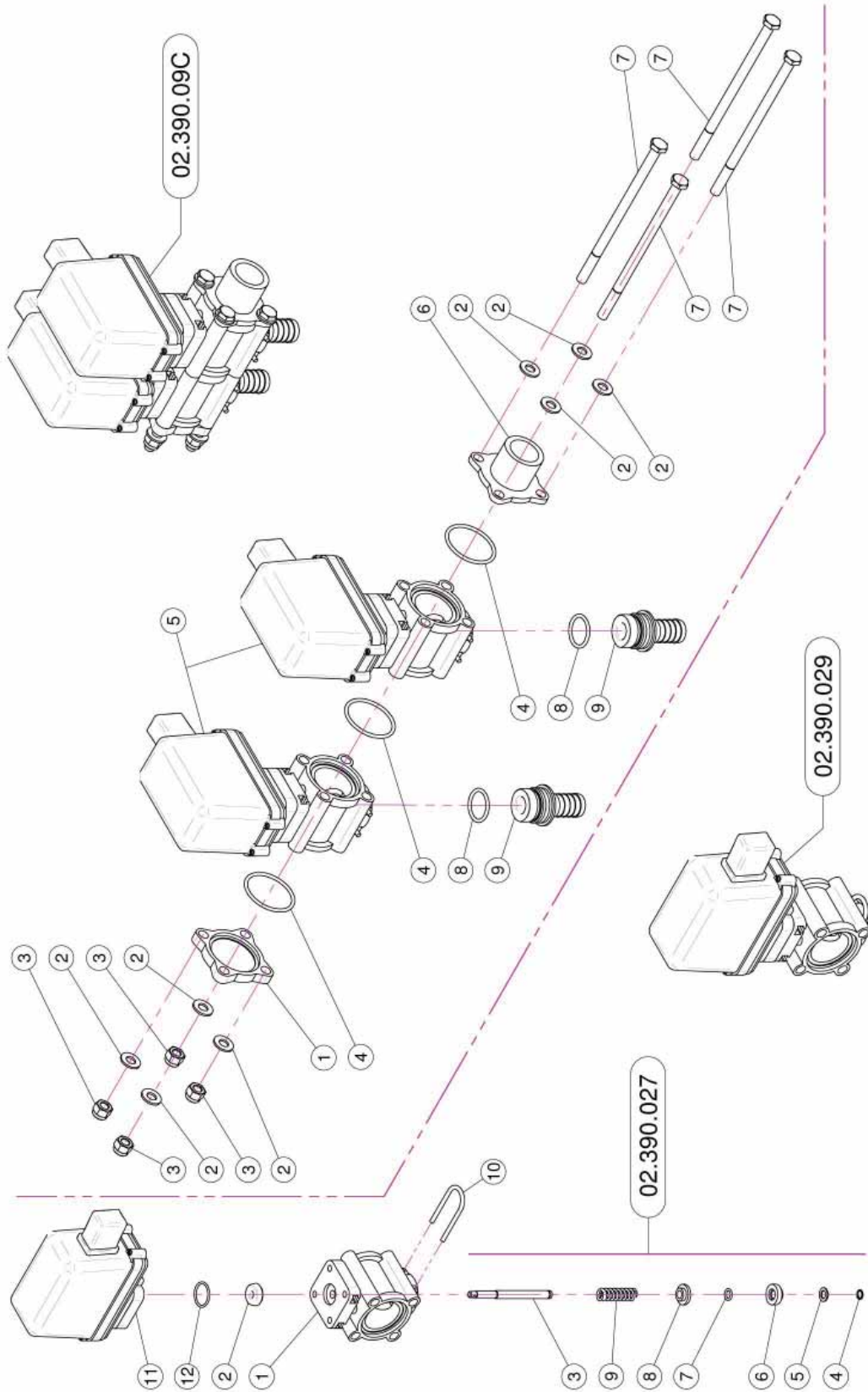
<u>REF.</u>	<u>QTY.</u>	<u>PART NO.</u>	<u>DESCRIPTION</u>
1	1	21.183.000	Cap Stop
2	1	02.120.000	Rapid Thread Cap
3	1	02.130.000	24 x 46 x 3 Rubber Gasket
4	1	02.116.000	Suction Fitting
5	1	OR.000.144	O-Ring D.36.69 x 3.53
6	1	02.152.010	Housing
7	2	TM.010.015	M10 x 1.5 Cap
8	17	TC.05.25.85	Cross Slotted Screw M5 x 25
9	1	02.179.000	Rubber Gasket
10	1	02.113.000	Delivery Fitting
11	8	DOT.06.5587	M6 Brass Nut 5587
12	1	DOT.10.5587	M10 Brass Nut
13	1	02.153.000	CD 32 Pump Impeller
14	1	00.085.024CS	Mechanical Seal
15	1	02.151.010	Pump Casing
16	1	20.406.000	Special Cover For Pump
17	17	RP.005.000	Washer D.5
18	2	K6.303.2RS	Roller Bearing
19	1	02.155.010	CD 32 Pump Shaft
20	1	02.722.000	Bush
21	1	02.723.001	Special Washer mm3
22	1	RP.010.030	Washer D.10 x 30 mm
23	1	I0.047.000	Internal D.47 Circlip
24	2	L.05.05.10	5 x 5 x 10 Tang
25	17	DOT.05.5587	M5 Brass Nut (5587)
26	1	02.114.000	INOX Special Washer
27	1	RP.010.00I	Washer D.10 INOX
28	1	D0.10.5588G	M10 6S Big Lead Nut 5588
29	1	02.723.002	Pulley For Pump D.82.5 x 1 3V
30	1	OR.002.070	R Cord D.2 L=700
31	8	RP.006.000	Washer D.6
32	4	TE.006.025T	Screw TE M6 x 25
33	3	D0.08.5588G	M8 6S Big Lead Nut 5588
34	3	RP.008.024	Washer D.8 x 24
35	3	RP.006.018	Washer D.8 x 18
36	1	02.723.005	Special Washer mm2

2.15 CONTROL VALVE



REF.	QTY.	PART NO.	DESCRIPTION
1	1	21.030.005	Switch 2V 2P On-Off 10A
3	2	21.030.007	Switch Cap D.12
4	2	RP.006.018	Washer D.6 x 18
5	1	DA.006.0AG	Self Locking Nut - High M6
6	1	21.030.008	12V Power Jack
7	1	TE.006.025T	Screw TE M6 x 25
8	1	21.030.004	10 Ah Fuse
9	1	21.030.002	Moving Fixing Bracket
10	1	21.030.003	Fixing Knob
11	1	20.111.000	Bracket
12	1	20.107.000	Female Bayonet Support

2.16 ELECTRIC VALVE ASSEMBLY



2.16 ELECTRIC VALVE ASSEMBLY

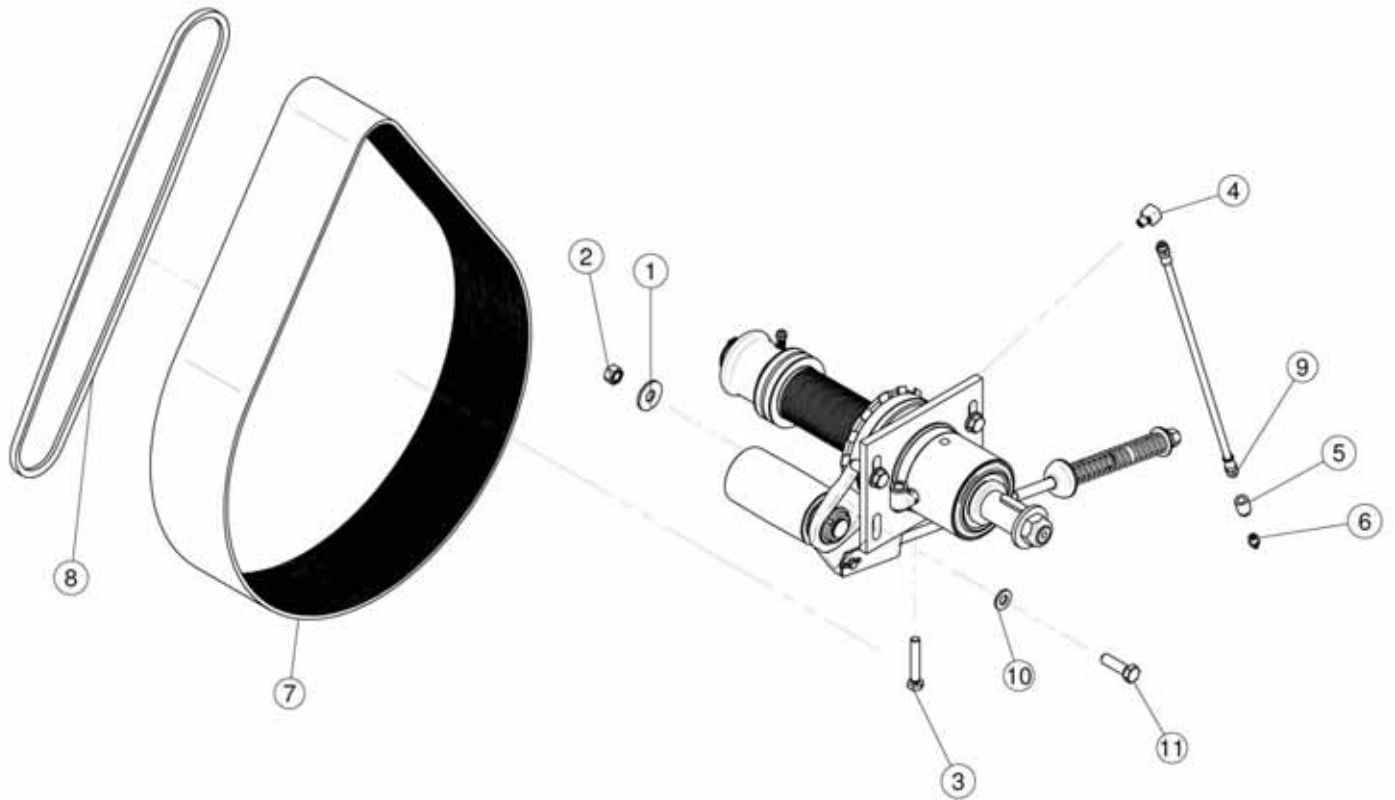
02.390.029

<u>REF.</u>	<u>QTY.</u>	<u>PART NO.</u>	<u>DESCRIPTION</u>
1	1	02.390.007	Valve Body
2	1	02.390.008	Gasket
3	1	02.390.020	Pin
4	1	02.390.013	Stop Ring
5	1	02.390.014	Washer 7.2 x 12 INOX
6	1	02.390.015	Lower Valve
7	1	02.390.016	O-Ring
8	1	02.390.009	Superior Valves
9	1	02.390.011	Spring
10	1	21.130.005	Fork
11	1	02.390.028	Solenoid Valve
12	1	OR.002.075	D.18.77 x 1.78 O-Ring

02.390.09C

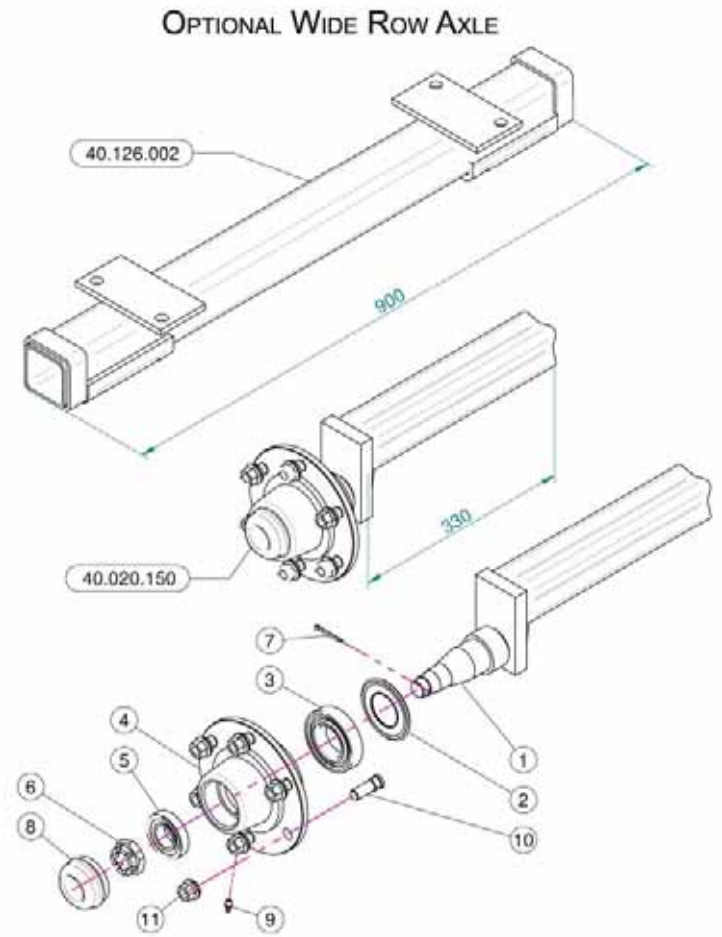
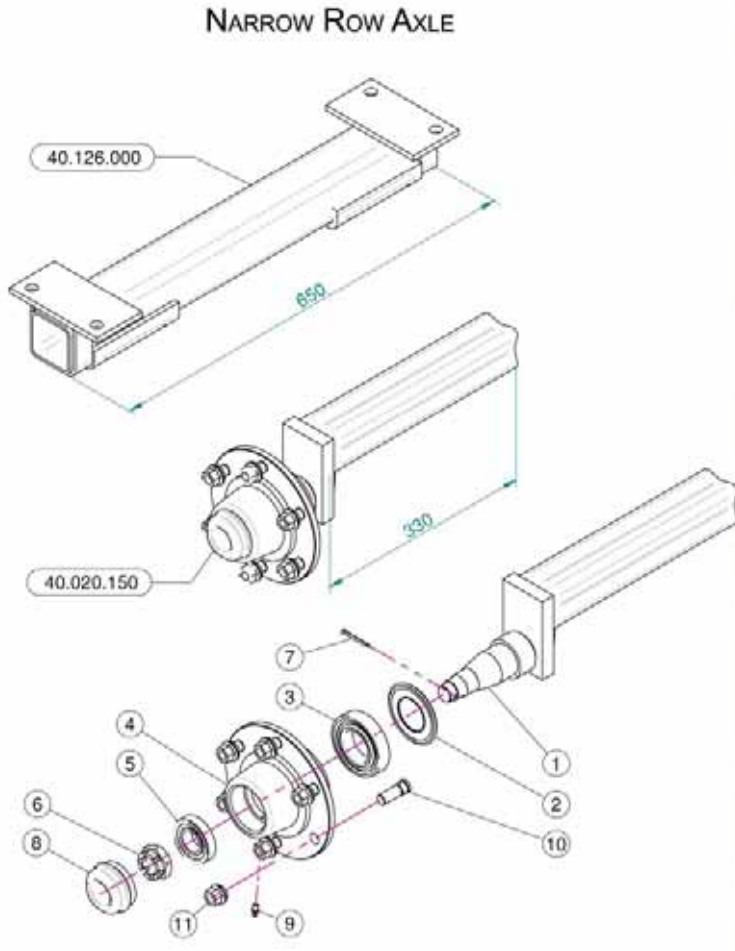
1	1	02.390.017	Valve Flange
2	8	RP.008.000	Washer D.8
3	4	DA.008.0AG	Self Locking Nut M8
4	3	OR.003.156	O-Ring Gasket 39.34 x 2.62
5	2	02.390.029	Solenoid Valve
6	1	02.390.018	Connector
7	4	TE.008.150	Screw TE M8 x 150
8	2	OR.000.130	22.22 x 2.62 O-Ring Gasket
9	2	02.407.000	Hosetail D.19

2.17 PUMP & FAN BELTS



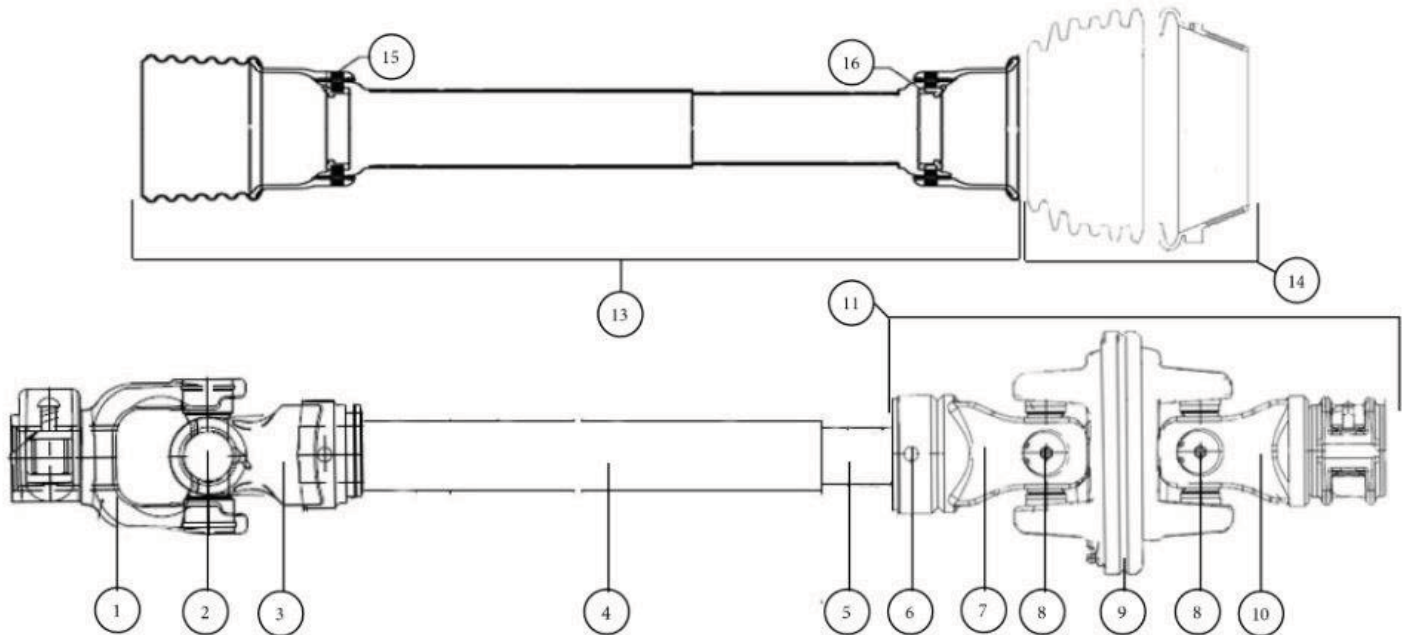
<u>REF.</u>	<u>QTY.</u>	<u>PART NO.</u>	<u>DESCRIPTION</u>
1	4	RP.012.036	Washer D12 x 36
2	4	D0.12.5587G	M12 Nut
3	1	TE.010.060T	Screw TE M10 x 60
4	1	02.736.000	90 G. M10 x 1 Fitting
5	1	02.737.000	Accessori
6	1	ID.010.001	Grease Nipple
7	1	C0.690.J50	Poly V-Belt
8	1	C0.500.03V	V-Belt
9	1	02.738.040	Greaser Extension M10 x 1 L=400
10	4	RP.012.000	Washer D.12
11	4	TE.012.040T	Bolt TE M12 x 40

2.18 AXLE & WHEEL HUBS



<u>REF.</u>	<u>QTY.</u>	<u>PART NO.</u>	<u>DESCRIPTION</u>
1	1	40.020.151	Axle Shaft (Not Supplied)
2	1	20.258.000	Oil Cover
3	1	K0.030.209	Bearing
4	1	05.903.001	Six Holes Flange
5	1	K0.030.206	Bearing
6	1	DI.027.5594F	Six Castle Nut M27
7	1	20.259.000	Split Pin
8	1	04.062.001	Cover
9	1	ID.006.001	Greaser
10	6	05.911.001	Stud
11	6	05.911.000	Special Nut

2.19 DRIVESHAFT - WB8105



<u>REF.</u>	<u>PART NO.</u>	<u>DESCRIPTION</u>
1	A824138	Quick Release Yoke 1 3/8" x 6-Spline
2	A824	Universal Cross
3	A8263	Outer Tube Yoke
4	A634	Outer Drive Tube
5	A454	Inner Drive Tube
6	A1090	Poll Pin (2 Required)
7	Order Joint	Inner C.V. Yoke
8	AG3606	C.V. Universal Cross (2 Required)
9	AG36000	C.V. Center Disc Assembly
10	AG366138	C.V. End Yoke 1 3/8" x 6-Spline
11	AG8001	C.V. Joint Assembly 1 3/8" x 6-Spline
12	AB121	Quick Release Button
13	AS30090	Guard Center Assembly Includes Bearings
14	ASW7100	Guard Wide Angle Attachment
15	AS301	Release Lever Kit
16	ASB3	Bearing Kit

3 LIMITED WARRANTY



GEARMORE, INC., warrants each new Gearmore product to be free from defects in material and workmanship for a period of twelve (12) months from date of purchase to the original purchaser. This warranty shall not apply to implements or parts that have been subject to misuse, negligence, accident, or that have been altered in any way.

Our obligation shall be limited to repairing or replacement of any part, provided that such part is returned within thirty (30) days from date of failure to Gearmore through the dealer from whom the purchase was made, transportation charges prepaid.

This warranty shall not be interpreted to render us liable for injury or damages of any kind or nature, direct, consequential or contingent, to person or property. This warranty does not extend to loss of crops, loss because of delay in harvesting or any other expenses, for any other reasons.

Gearmore in no way warrants engines, tires, or other trade accessories, since these items are warranted separately by these respective manufacturers.

Gearmore reserves the right to make improvements in design or changes in specification at any time, without incurring any obligations to owners or units previously sold.

Please be advised that all warranty work done by your dealer must be approved by Gearmore before work begins.

GEARMORE, INC.
13477 Benson Ave.
Chino, CA 91710

Always refer to and heed machine operating warning decals on machine.

*To validate the warranty on this product, please log-in to our website - www.gearmore.com.
You will find "warranty registration" listed at the top of our homepage.*