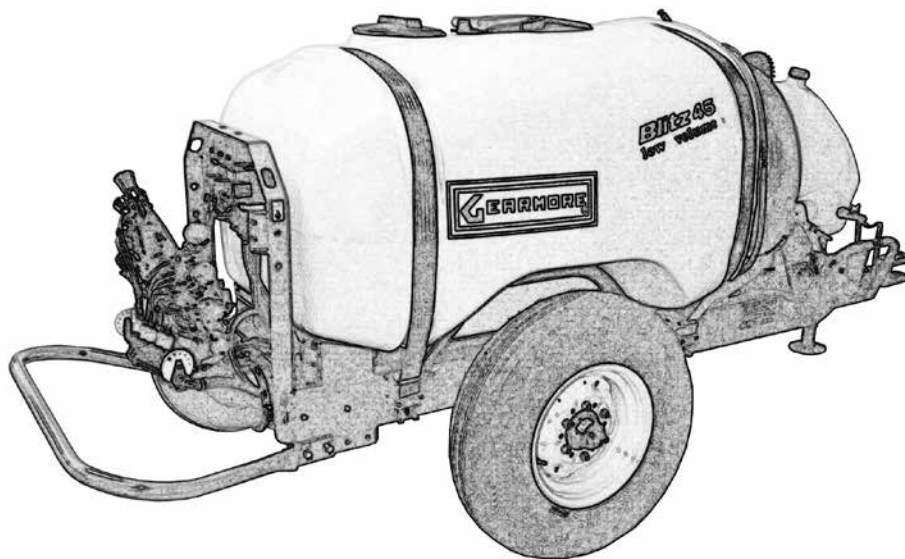


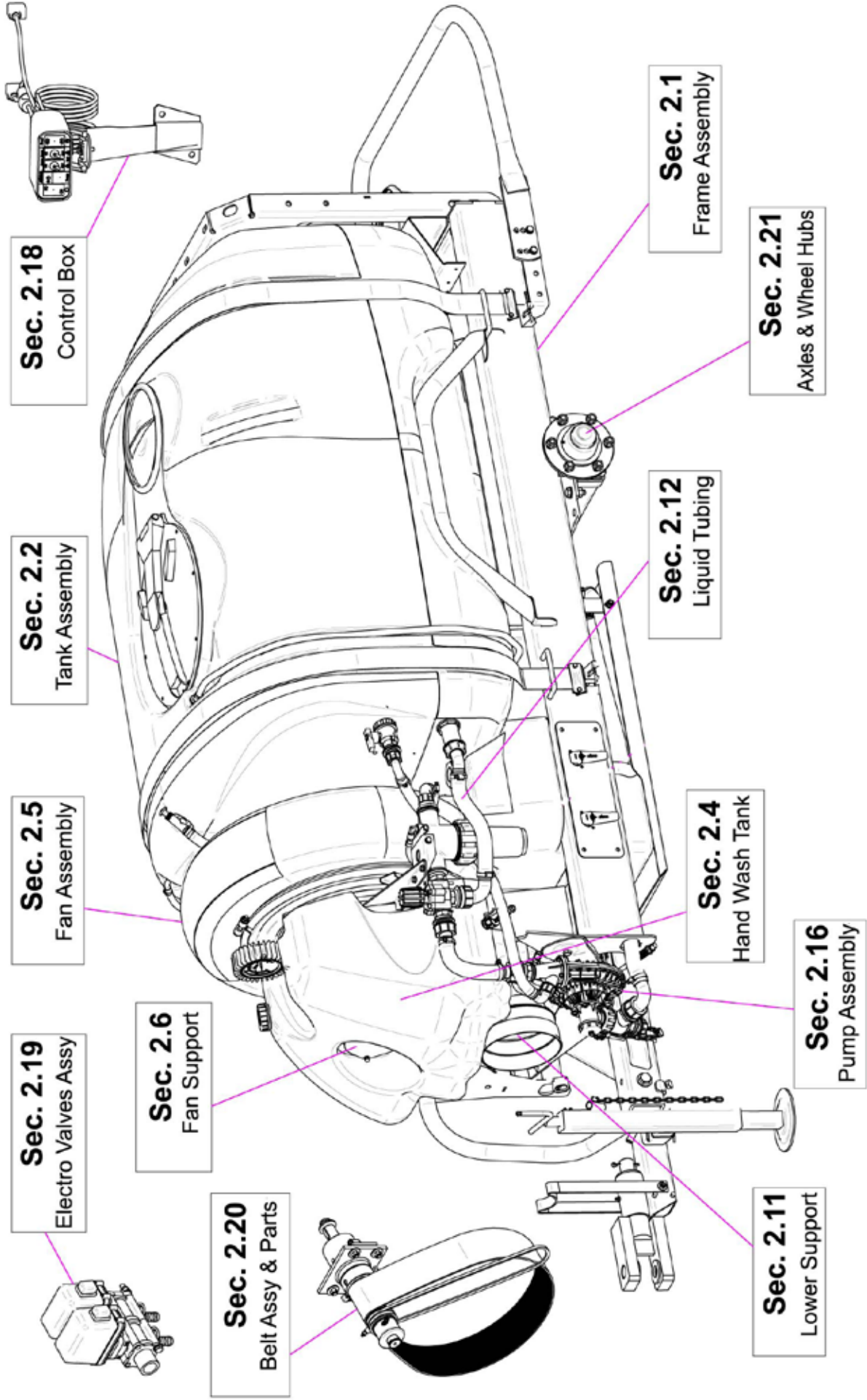


VENTURI AIR SPRAYERS



**Parts Manual For
Model T45N1-800
200 Gallon Capacity**

Sept. 2020 Rev.1



Sec. 2.19
Electro Valves Assy

Sec. 2.5
Fan Assembly

Sec. 2.2
Tank Assembly

Sec. 2.18
Control Box

Sec. 2.6
Fan Support

Sec. 2.20
Belt Assy & Parts

Sec. 2.1
Frame Assembly

Sec. 2.21
Axles & Wheel Hubs

Sec. 2.12
Liquid Tubing

Sec. 2.4
Hand Wash Tank

Sec. 2.16
Pump Assembly

Sec. 2.11
Lower Support

TABLE OF CONTENTS

| <u>SECTION</u> | <u>DESCRIPTION</u> | <u>PAGE</u> |
|----------------|---------------------------------------|---------------|
| 1 | Introduction | 1 |
| 1.1 | Purchaser's Responsibility | 1 |
| 1.2 | Serial Number Information | 1 |
| 2 | Replacement Parts | 2 - 29 |
| 2.1 | Frame Assembly..... | 2-4 |
| 2.2 | Tank Assembly..... | 5-6 |
| 2.3 | Tank Fittings & Cover | 7-8 |
| 2.4 | Hand Wash Tank | 9 |
| 2.5 | Fan Assembly | 10 |
| 2.6 | Fan Support..... | 11 |
| 2.7 | Fan Support Breakdown..... | 12 |
| 2.8 | Belt Tension Roller..... | 13 |
| 2.9 | Lubrication Tubing..... | 14 |
| 2.10 | Main Pulley & Overrunning Clutch..... | 15 |
| 2.11 | Fan Support Hub Assy | 16 |
| 2.12 | Liquid Flow Path Manual Controls..... | 17-19 |
| 2.13 | Pressure Regulator & 3Way Valve..... | 20 |
| 2.14 | Suction Filter Assembly..... | 21 |
| 2.15 | Main Pump Breakdown..... | 22-23 |
| 2.16 | Control Box 910208/T..... | 24 |
| 2.17 | Electro Valves..... | 25-26 |
| 2.18 | Pump & Fan Belts | 27 |
| 2.19 | Axle & Wheel Hubs | 28 |
| 2.20 | Driveshaft | 29-30 |
| 3 | Limited Warranty | 31 |

1 INTRODUCTION

This manual contains parts diagrams and replacement parts lists. Do not modify the equipment in any way. Unauthorized modification may impair the function and/or safety and could affect the life of the equipment.

It is the responsibility of the owner to make sure the machine is maintained properly, and that all parts are in working order.

Where replacement parts are necessary for periodic maintenance and servicing, genuine factory replacement parts ***MUST*** be used to restore your equipment to original specifications. The manufacturer will not be responsible for injuries or damages caused by use of unapproved parts and/or accessories.

The manufacturer reserves the right to make improvements to the machinery and parts at any time and at their discretion.

OPERATOR ORIENTATION - The directions left, right, front and rear, are as seen from the driver's seat and facing in the direction of travel.

1.1 PURCHASER'S RESPONSIBILITY

It is the responsibility of the purchaser and/or operator to.....

- Inspect the equipment and replace or repair any parts that are damaged or worn which under continued operation would cause damage, wear to other parts, or cause a safety hazard.
- Return the equipment or parts to the authorized dealer, from where it was purchased, for service or replacement of defective parts that are covered by warranty. (The factory may inspect equipment or parts before warranty claims are honored.)
- Payment of all costs incurred by the dealer for traveling to or transporting the equipment for warranty inspection and or claims.

1.2 MODEL / SERIAL NUMBER

NAME: _____

PURCHASED FROM: _____

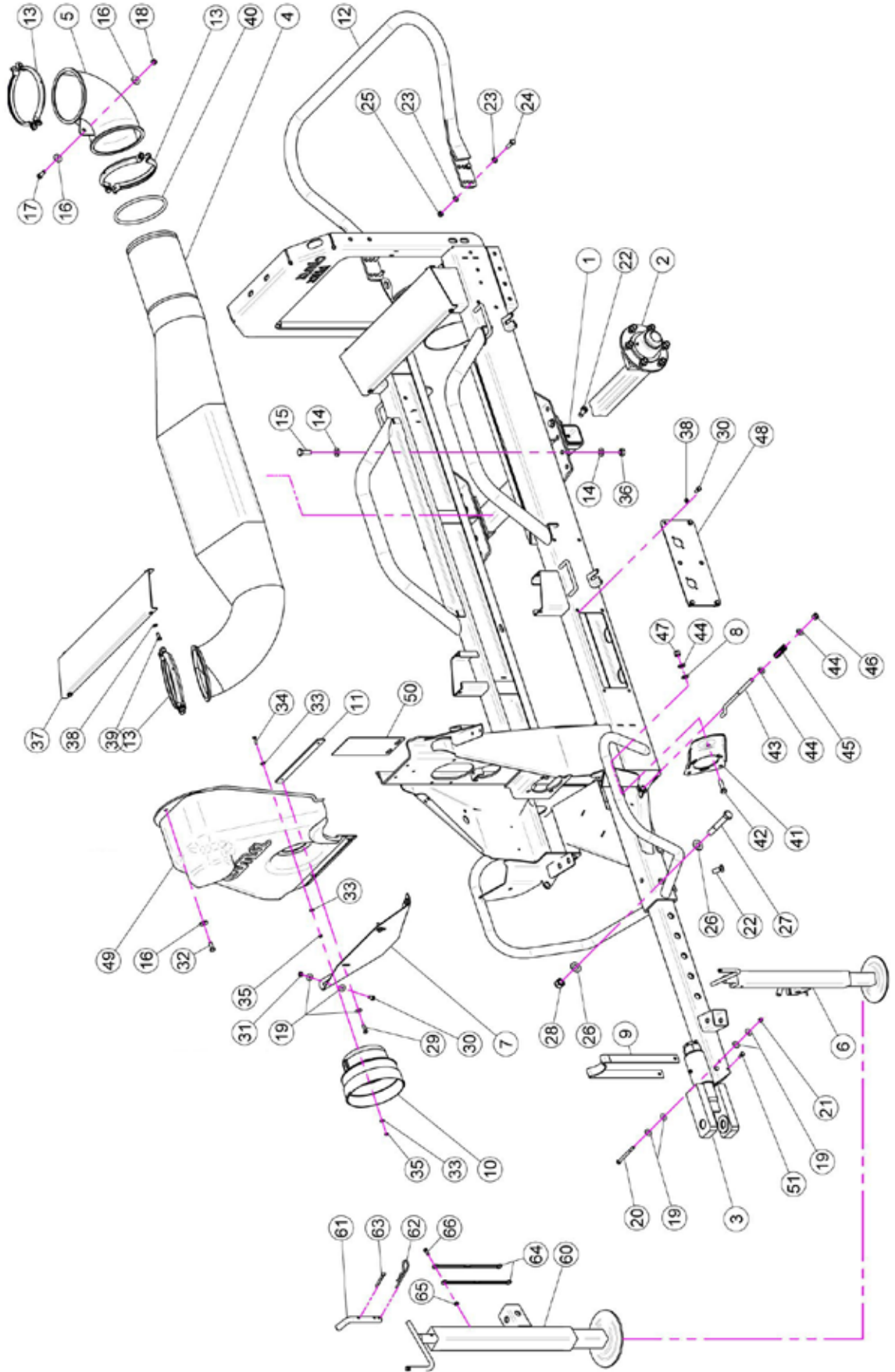
DATE OF PURCHASE: _____

MODEL NUMBER: _____

SERIAL NUMBER: _____

2 REPLACEMENT PARTS

2.1 FRAME ASSEMBLY



2.1 FRAME ASSEMBLY

| <u>REF.</u> | <u>QTY.</u> | <u>PART NO.</u> | <u>DESCRIPTION</u> |
|-------------|-------------|-----------------|------------------------------|
| 1 | 1 | 40.126.000 | Axle |
| 2 | 2 | 40.020.150 | Hub 6 Colonnette |
| 3 | 1 | 40.136.200 | Drawbar |
| 4 | 1 | 40.141.000 | Air Way Tunnel |
| 5 | 1 | 05.615.000 | Elbow D.175 90° |
| 6 | 1 | 04.993.070C | Extractable Jackstand |
| 7 | 1 | 20.531.000 | Carter Fixing Plate |
| 8 | 1 | MT.012.000 | Washer D.12 |
| 9 | 1 | 20.409.000 | Shaft Support |
| 10 | 1 | 20.440.000 | Shaft Cone D.210 |
| 11 | 1 | 20.532.000 | Front Housing Blocking Plate |
| 12 | 1 | 40.000.000 | Bumper |
| 13 | 3 | 05.616.000 | Pipe Clamp D.175 |
| 14 | 8 | RP.014.000 | Washer D.14 |
| 15 | 4 | TE.014.040T | Screw TE M14 x 40 |
| 16 | 3 | RP.010.030 | Washer D.10 x 30 mm |
| 17 | 1 | TE.010.030T | Screw TE M10 x 30 |
| 18 | 1 | D0.10.5587G | Nut M10 |
| 19 | 10 | RP.008.024 | Washer D.8 x 24 |
| 20 | 1 | TE.008.100 | Screw TE M8 x 100 |
| 21 | 1 | DA.008.0AG | Self Locking Nut M8 |
| 22 | 6 | TE.014.030T | Screw TE M14 x 30 |
| 23 | 8 | RP.010.000 | Washer D.10 |
| 24 | 4 | TE.010.035T | Screw TE 10 x 35 |
| 25 | 4 | D0.10.5587G | Nut M10 |
| 26 | 2 | RP.018.000 | Washer |
| 27 | 1 | TE.018.120 | Screw TE M18 x 120 |
| 28 | 1 | DA.018.0AG | Self Locking Nut M18 |
| 29 | 2 | TE.008.025T | Screw TE M8 x 25 |
| 30 | 10 | TE.008.020T | Screw TE 8 x 20 |
| 31 | 2 | D0.08.5588G | Nut M8 |
| 32 | 1 | TE.010.025T | Screw TE 10 x 25T |
| 33 | 9 | RD.006.000 | Tab Washer D.6 |
| 34 | 3 | TE.006.025T | Screw TE M6 x 25 |
| 35 | 6 | D0.06.5588G | Nut M6 |
| 36 | 4 | D0.014.5587G | Nut M14 |
| 37 | 2 | 40.301.000 | Plate Tank |
| 38 | 12 | RP.008.000 | Washer D.8 |
| 39 | 4 | TE.008.025T | Screw TE M8 x 25 |
| 40 | 1 | 40.147.000 | Gasket For Tunnel 45-50 |
| 41 | 1 | 02.978.000SX | Bracket |
| 42 | 1 | TE.012.040T | Bolt TE M12 x 40 |
| 43 | 1 | 21.005.000 | Belt Stretcher For Pump |

2.1 FRAME ASSEMBLY

| <u>REF.</u> | <u>QTY.</u> | <u>PART NO.</u> | <u>DESCRIPTION</u> |
|--------------------|--------------------|------------------------|---------------------------|
| 44 | 3 | RP.012.000 | Washer D.12 |
| 45 | 1 | 02.964.000 | CD 32 Pump Spring |
| 46 | 1 | DOT.12.5587 | M12 Brass Nut |
| 47 | 1 | DA.012.0AG | Nut M12 |
| 48 | 1 | 40.378.000 | Plate |
| 49 | 1 | 04.866.150 | Fan Housing 1 Pump |
| 50 | 1 | 50.355.000 | Product Note Support |
| 51 | 2 | TE.008.016T | Screw TE M8 x 16 |

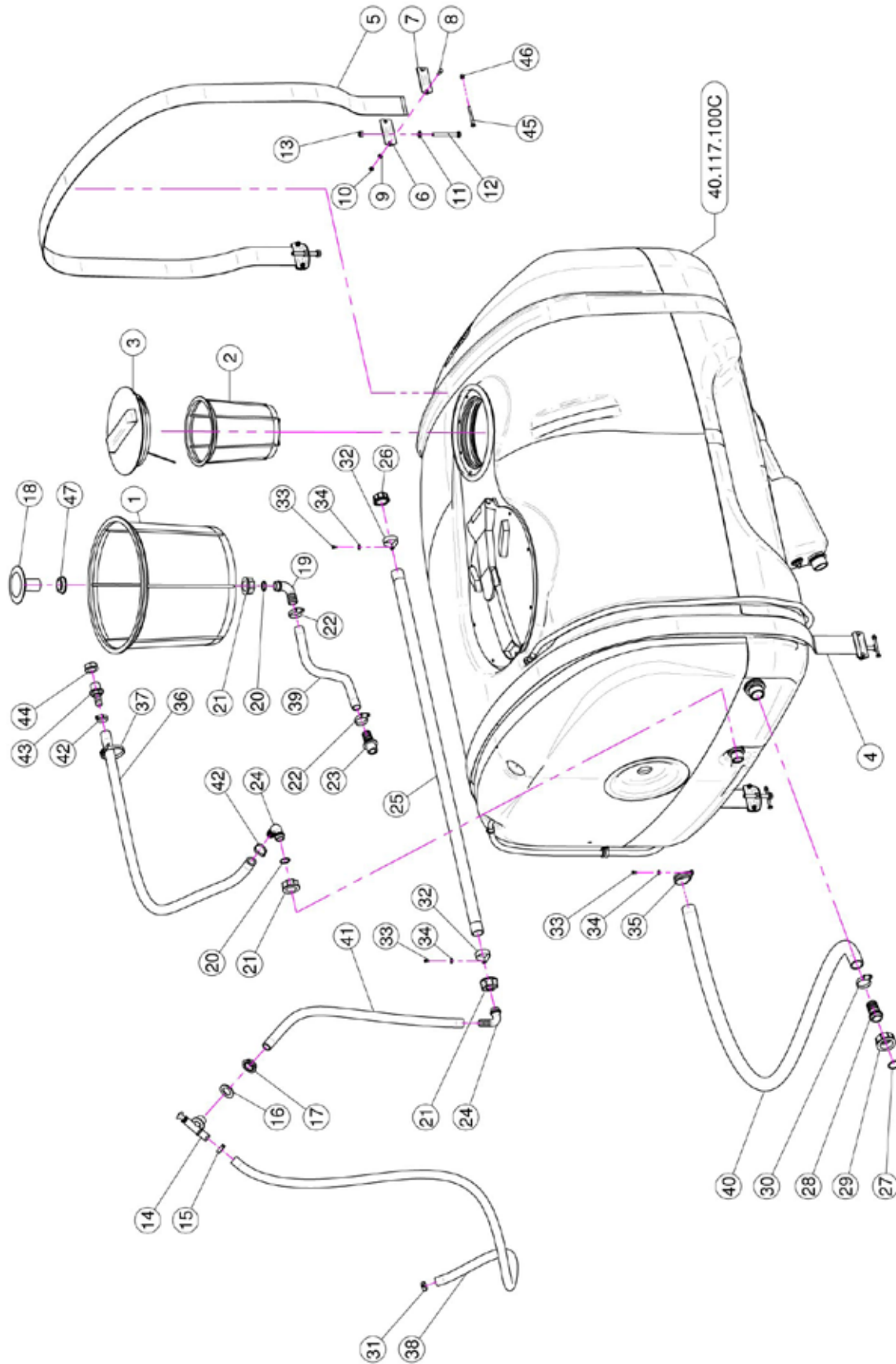
FAN GUARD

| | | | |
|----|---|-------------|-------------------------|
| 53 | 1 | 04.866.050 | Fan Housing 1 Pump |
| 54 | 1 | 40.333.000 | Fan Clutch Lid |
| 55 | 2 | D0.06.5589G | Nut M6 |
| 56 | 2 | RD.006.000 | Tab Washer D.6 |
| 57 | 2 | TE.006.016T | Screw TE M6 x 16 |
| 58 | 2 | RP.006.000 | Washer D.6 |
| 59 | 2 | DC.06.5721I | Nut DIN 1587 6 x 1-6-10 |

TONGUE JACK

| | | | |
|----|---|-------------|------------------|
| 60 | 1 | 04.993.070 | Jackstand Body |
| 61 | 1 | 20.505.000 | Pin Jackstand |
| 62 | 1 | 00.100.004 | Split Pin D.4 |
| 63 | 1 | CP.006.040I | Pin D.6 Lg. 40 |
| 64 | 2 | 21.183.000 | Cap Stop |
| 65 | 1 | D0.06.5588G | Nut M6 |
| 66 | 1 | TE.006.016T | Screw TE M6 x 16 |

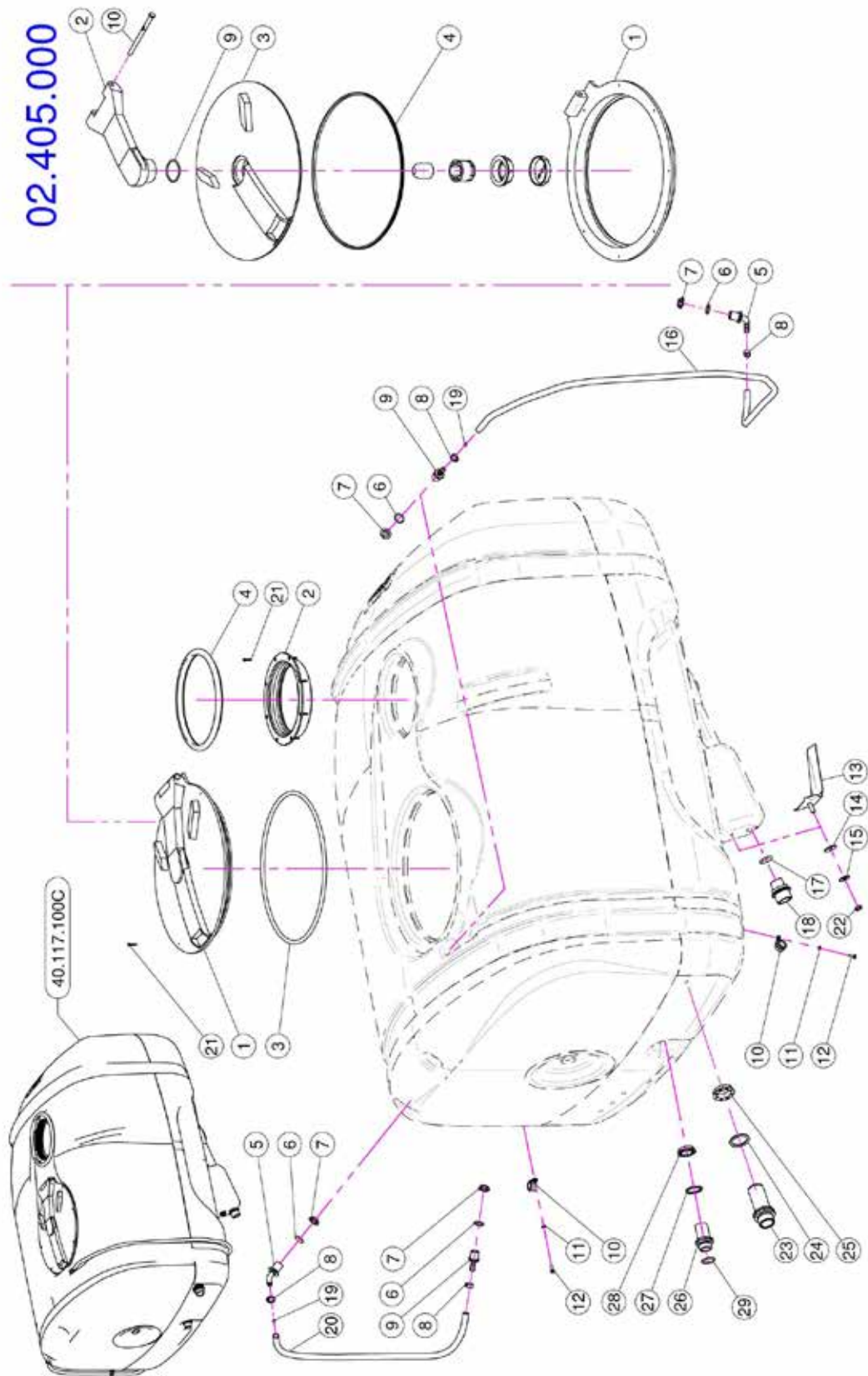
2.2 TANK ASSEMBLY



2.2 TANK ASSEMBLY

| <u>REF.</u> | <u>QTY.</u> | <u>PART NO.</u> | <u>DESCRIPTION</u> |
|-------------|-------------|-----------------|---------------------------------|
| 1 | 1 | 02.404.100 | Basket Filter 400 x 330 |
| 2 | 1 | 02.298.000 | Basket Filter D.204 |
| 3 | 1 | 02.476.100 | Threaded Lid D.255 With Rope |
| 4 | 1 | 02.481.277 | Nylon Band 60 mm L=2770 |
| 5 | 1 | 02.481.253 | Nylon Band 60 mm L=2530 |
| 6 | 4 | 20.512.000 | Bracket |
| 7 | 4 | 20.513.000 | Shaped Plate |
| 8 | 8 | TE.006.020T | Screw TE M6 x 20 |
| 9 | 8 | RP.006.000 | Washer D.6 |
| 10 | 8 | DA.006.0AG | Self Locking Nut - High M6 |
| 11 | 4 | RP.010.000 | Washer D.10 |
| 12 | 4 | TE.010.080T | M10 x 80 Bolt |
| 13 | 4 | DOT.10.5587 | M10 Brass Nut |
| 14 | 1 | 02.135.000 | Complete Piston Valve |
| 15 | 1 | FC.023.5.025 | Hose Clamp 23.5 - 25 |
| 16 | 1 | 02.032.000 | Gasket D.26 x 40 SP.2 |
| 17 | 1 | 00.541.000 | Nut 3/4" |
| 18 | 1 | 00.131.000 | 1" Vortex Damper Drive |
| 19 | 1 | 00.055.037 | D.25 Hosetail |
| 20 | 2 | OR.000.132 | 23.81 x 2.62 O-Ring Gasket |
| 21 | 3 | 00.055.24.2 | 1" Fly Nut |
| 22 | 2 | F0.023.035I | Stainless Steel Clip |
| 23 | 1 | 20.793.000 | Hosetail R.H. D.25 3/4" GAS M. |
| 24 | 1 | 00.055.038 | Curved Union With R.H. D.19 |
| 25 | 1 | 40.035.001 | Perforated Hose 1" L=1200 |
| 26 | 1 | TF.001.000 | Packing |
| 27 | 1 | OR.003.112 | O-Ring D.28.24 x 2.62 |
| 28 | 1 | 00.058.028 | Straight Hose R.H. D.30 |
| 29 | 1 | 00.058.006 | 1" 1/4 Fly Nut |
| 30 | 1 | F0.025.040I | Stainless Steel Clip |
| 31 | 1 | FC.022.5.024 | Hose Clamp 22.5 - 24 |
| 32 | 2 | FN.035.000 | Sticker |
| 33 | 3 | TE.005.010I | Screw TE M5 x 10 |
| 34 | 3 | RP.005.015I | Washer D.5 x 15 |
| 35 | 1 | FG.040.000 | Sticker |
| 36 | As Req'd | 02.212.000 | Hose D.19 x 28 L=130 (Per Foot) |
| 37 | 3 | 02.355.000 | Nylon Assembly Clamp |
| 38 | As Req'd | 02.372.000 | Hose D.19 L=1250 (Per Foot) |
| 39 | As Req'd | 20.809.000 | Hose D.25 L=960 (Per Foot) |
| 40 | As Req'd | 02.238.000 | Hose D.30 L=1200 (Per Foot) |
| 41 | As Req'd | 02.212.000 | Hose D.19 x 26 L=750 (Per Foot) |
| 42 | 2 | FC.027.5.029 | Hose Clamp 27.08 - W8 |
| 43 | 1 | 00.418.000 | Straight Union R.H. 19 3/4 GAS |
| 44 | 1 | 02.182.100 | Female 3/4" Cap |
| 45 | 4 | TE.006.060I | INOX M6 x 60 TE Screw |
| 46 | 4 | DC.06.5721I | Nut DIN 1587 6 x 1-6-10 |
| 47 | 1 | 00.542.000 | Nut 1" |

2.3 TANK FITTINGS & COVERS



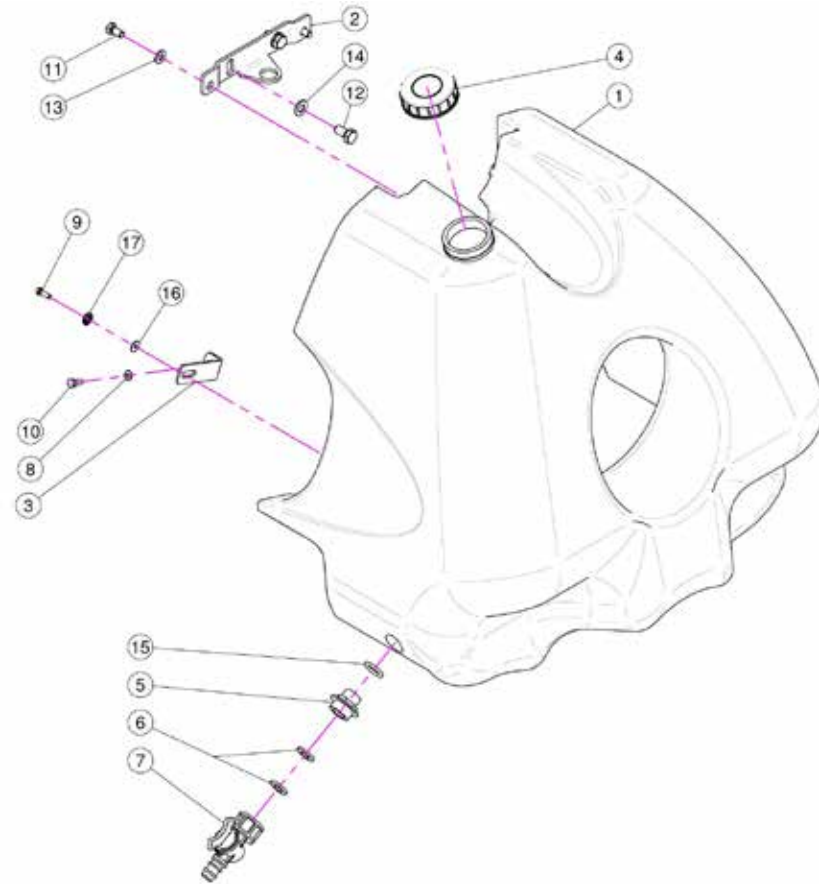
2.3 TANK FITTINGS & COVERS

| <u>REF.</u> | <u>QTY.</u> | <u>PART NO.</u> | <u>DESCRIPTION</u> |
|-------------|-------------|-----------------|-----------------------------------|
| 1 | 1 | 02.405.000 | Hinged Tank Lid |
| 2 | 1 | 02.477.000 | Threaded Ring D.255 |
| 3 | 1 | 02.405.000.L | Gasket |
| 4 | 1 | 02.477.000.A | Threaded Ring Gasket D.255 |
| 5 | 2 | 02.457.000 | Hosetail D.13 90° M. 1/2" |
| 6 | 4 | OR.004.081 | 20.22 x 3.53 O-Ring Gasket |
| 7 | 4 | 02.458.000 | Lock Ring 1/2" |
| 8 | 4 | FC.016.5.018 | Hose Clamp 16.5 - 18 |
| 9 | 2 | 02.482.000 | Hosetail Male Threaded 1/2" |
| 10 | 2 | FG.018.000 | Sticker |
| 11 | 2 | RP.006.000 | Washer D.6 |
| 12 | 2 | TE.006.016T | Screw TE M6 x 16 |
| 13 | 1 | 20.498.002 | Stainless Steel Anti-Vortex |
| 14 | 1 | 20.436.000 | Special Garnishing For Anti-Whirl |
| 15 | 1 | RP.010.030 | Washer D.10 x 30 mm |
| 16 | As Req'd | 02.378.000 | Hose D.12 x 16 L=1600 (Per Foot) |
| 17 | 1 | OR.000.507 | 27 x 5 O-Ring Gasket |
| 18 | 1 | 00.045.012 | 1" 1/4 M - 1" M Reducer Nipple |
| 19 | 2 | 02.478.000 | Red Floating Ball D.8.5 |
| 20 | As Req'd | 02.378.000 | Hose D.12 x 16 L=850 (Per Foot) |
| 21 | 16 | TAS.04.2.025I | Self Threaded Screw 4.2 x 25 |
| 22 | 1 | DOT.10.5587 | M10 Brass Nut |
| 23 | 1 | 00.345.000 | Nipple 1" 1/4 + 1" 1/4 GAS |
| 24 | 1 | 02.033.000 | Gasket |
| 25 | 1 | 00.543.000 | Nut 1" 1/4 GAS |
| 26 | 1 | 00.055.134.L | Cutted Long Nipple 1"/1" GAS |
| 27 | 1 | 02.066.000 | Gasket D.33 x 45 |
| 28 | 1 | 00.542.000 | Nut 1" |
| 29 | 1 | OR.004.118 | 29.75 x 3.53 O-Ring Gasket |

02.405.000 MAIN HATCH

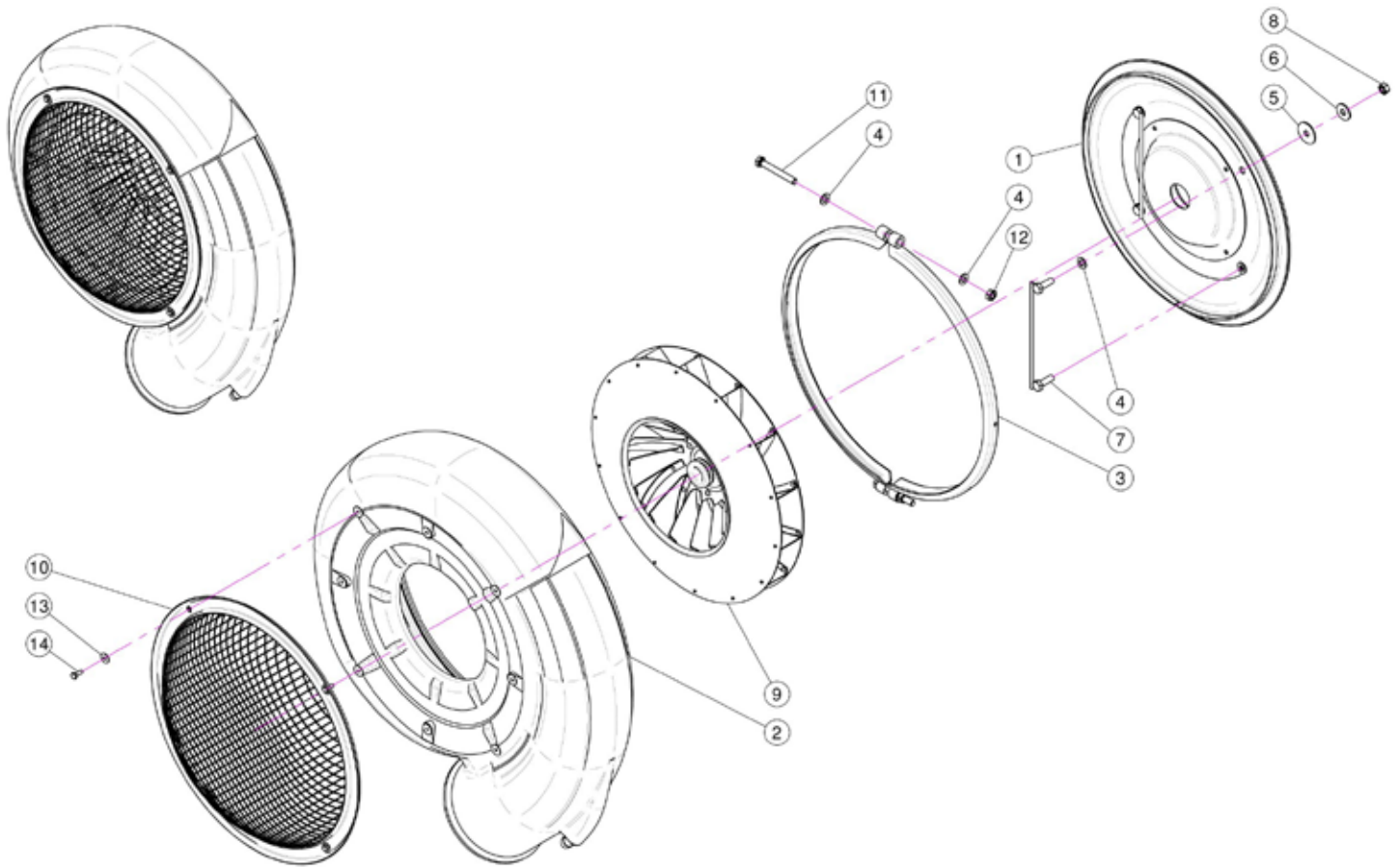
| | | | |
|----|---|--------------|------------------------|
| 1 | 1 | 02.405.000.B | Base Ring |
| 2 | 1 | 02.405.001 | Arm |
| 3 | 1 | 02.405.000.A | Gripping Plate |
| 4 | 1 | 02.405.002 | Shaped Gasket |
| 9 | 1 | OR.000.512 | 51 x 3.5 O-Ring Gasket |
| 10 | 1 | 20.787.000.D | Pin |

2.4 HAND WASH TANK



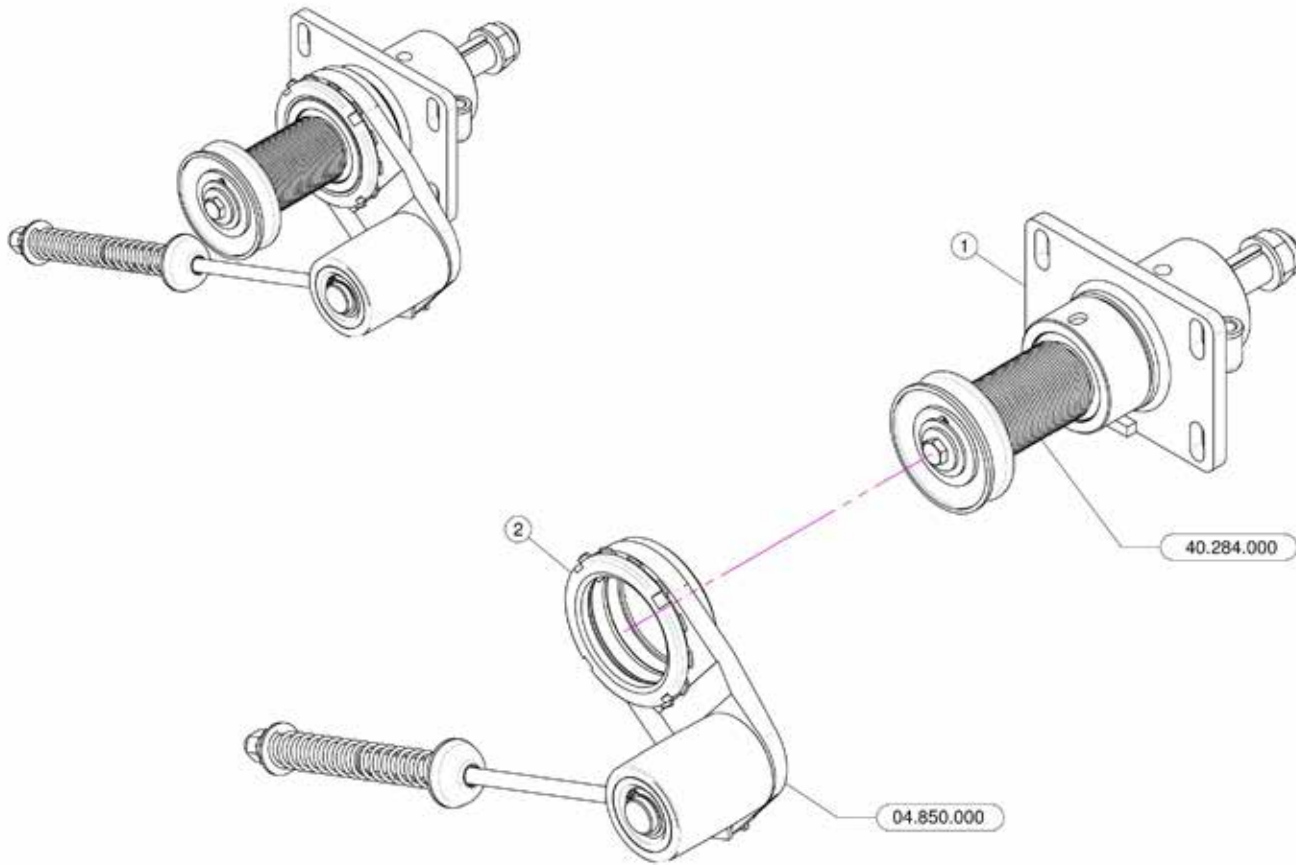
| <u>REF.</u> | <u>QTY.</u> | <u>PART NO.</u> | <u>DESCRIPTION</u> |
|-------------|-------------|-----------------|--|
| 1 | 1 | 40.322.000 | Hand Washing Tank |
| 2 | 1 | 40.323.000 | Fixing Bracket |
| 3 | 2 | 40.324.000 | Bracket For Handwashing Tank 45 Series |
| 4 | 1 | 02.460.000 | Female Threaded Tank Lid |
| 5 | 1 | 00.055.044 | Nipple 1/2" - 3/4" GAS |
| 6 | 2 | 02.030.010 | Gasket |
| 7 | 1 | 02.497.000 | 3/4" Female Valve |
| 8 | 2 | RP.006.000 | Washer D.6 |
| 9 | 2 | TE.005.016I | Screw TE M5 x 16 |
| 10 | 2 | TE.006.016T | Screw TE M6 x 16 |
| 11 | 2 | TE.008.016T | Screw TE M8 x 16 |
| 12 | 2 | TE.010.020T | Screw TE M10 x 20 |
| 13 | 2 | RP.008.000 | Washer D.8 |
| 14 | 2 | RP.010.000 | Washer D.10 |
| 15 | 1 | OR.004.081 | 20.22 x 3.53 O-Ring Gasket |
| 16 | 2 | RP.005.015I | Washer D.5 x 15 |
| 17 | 2 | RD.006.000 | Tab Washer D.6 |

2.5 FAN ASSEMBLY



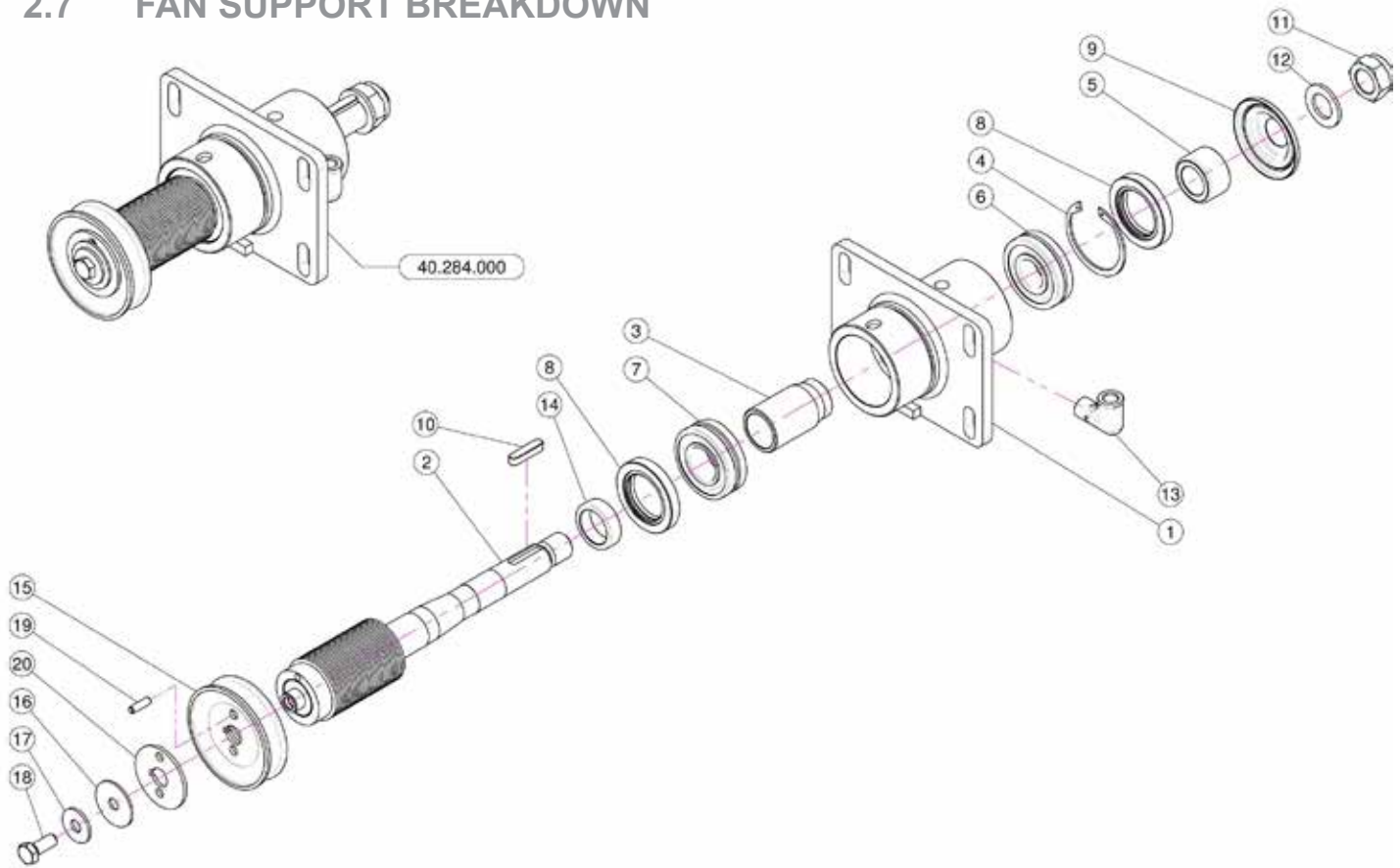
| <u>REF.</u> | <u>QTY.</u> | <u>PART NO.</u> | <u>DESCRIPTION</u> |
|--------------------|--------------------|------------------------|---------------------------|
| 1 | 1 | 40.268.000 | Fan 45 Cover |
| 2 | 1 | 04.854.000 | Fan Housing P/T45N |
| 3 | 1 | 04.874.000.Z | D.485 Clamp |
| 4 | 8 | RP.010.000 | Washer D.10 |
| 5 | 4 | RP.010.040 | Washer D.10 x 40 |
| 6 | 4 | RP.010.030 | Washer D.10 x 30 mm |
| 7 | 2 | 20.088.000 | Back Cover Bracket |
| 8 | 4 | D0.10.5587G | Nut M10 |
| 9 | 1 | 04.720.000 | Fan 450 |
| 10 | 1 | 05.654.200 | Fan Net Protection |
| 11 | 2 | TE.010.080T | Bolt M10 x 80 |
| 12 | 2 | DOT.10.5587 | M10 Brass Nut |
| 13 | 4 | RP.006.018 | Washer D.6 x 18 |
| 14 | 4 | TE.006.016T | Screw TE M6 x 16 |

2.6 FAN SUPPORT



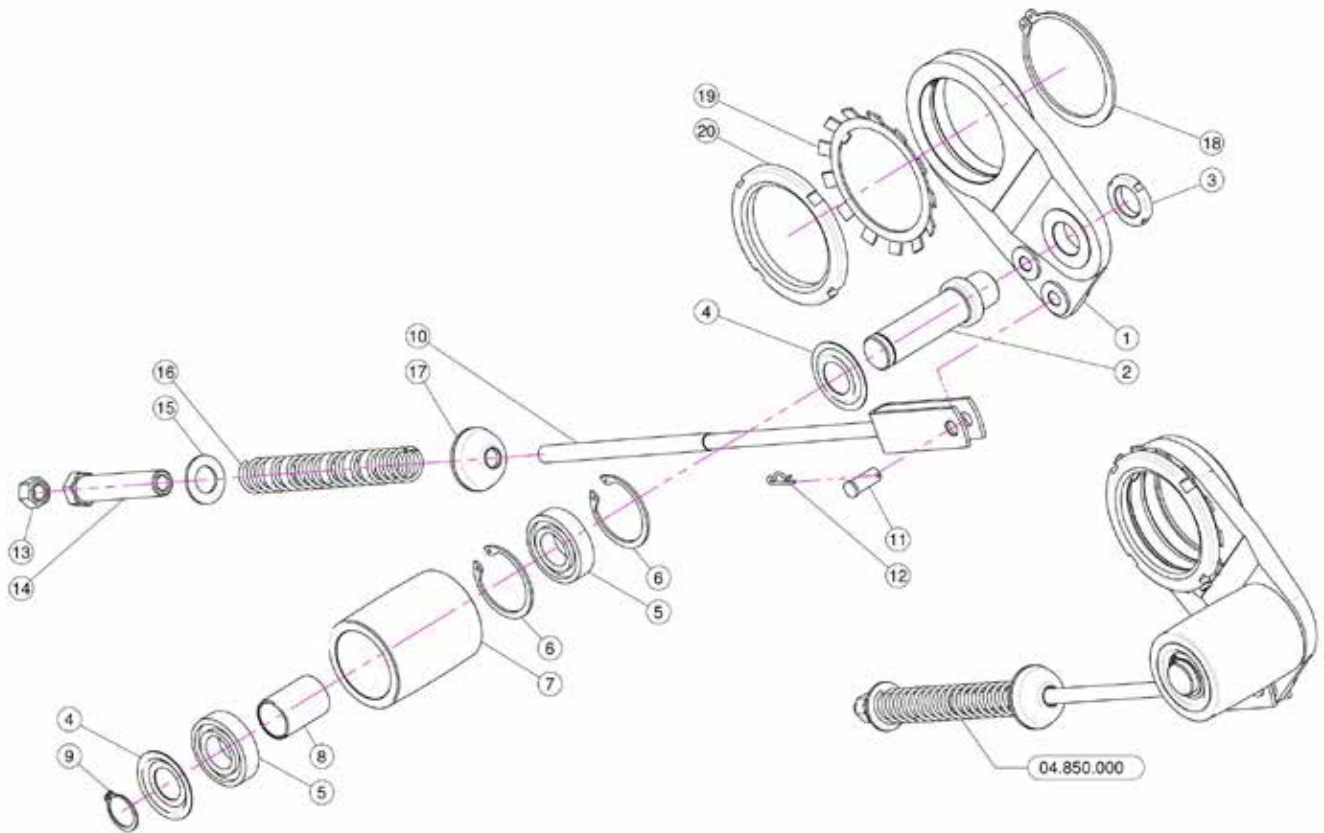
| <u>REF.</u> | <u>QTY.</u> | <u>PART NO.</u> | <u>DESCRIPTION</u> |
|--------------------|--------------------|------------------------|---------------------------------------|
| 1 | 1 | 40.284.000 | Fan Support Pul D.54 No Disengagement |
| 2 | 1 | 04.850.000 | Automatic Belt Stretcher |

2.7 FAN SUPPORT BREAKDOWN



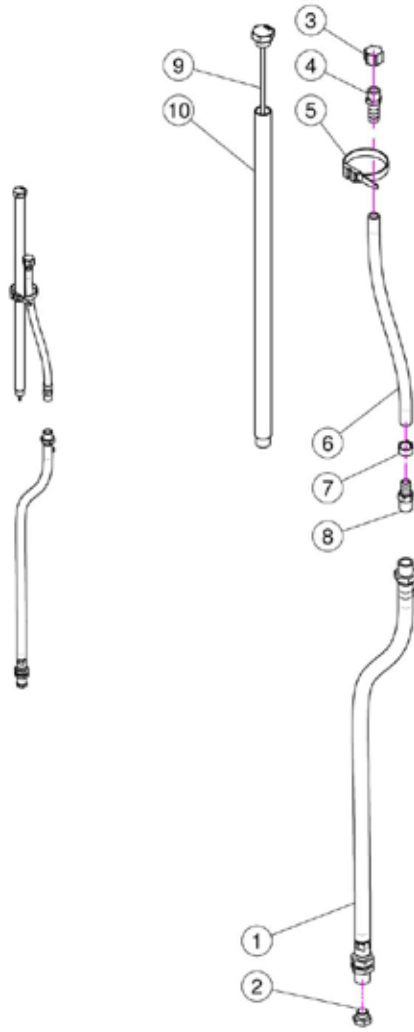
| REF. | QTY. | PART NO. | DESCRIPTION |
|-------------|-------------|-----------------|---------------------------------|
| 1 | 1 | 40.260.000 | Fan Support |
| 2 | 1 | 40.271.054 | Shaft With Pulley D.54 J32 |
| 3 | 1 | 40.262.000 | Spacer Fan Support |
| 4 | 1 | I0.062.000 | Internal D.62 Circlip |
| 5 | 1 | 40.263.000 | Side Fan Seal Spacer |
| 6 | 1 | K0.021.305 | Bearing To Oblique Seams 21.305 |
| 7 | 1 | K0.022.206 | Bearing To Oblique Seams 22.206 |
| 8 | 2 | BASL.40.62.10 | Viton Lip Seals IEL 40.62.10 |
| 9 | 1 | 40.267.000 | Side Fan Cover |
| 10 | 1 | L.08.07.35 | 8 x 7 x 35 Tang |
| 11 | 1 | DA.022.0BF | Self-Locking Nut M22 x 1.5 |
| 12 | 1 | RP.022.000 | Washer D.22 |
| 13 | 1 | 20.789.000 | Male/Female 90° Elbow |
| 14 | 1 | 40.264.000 | Spacer |
| 15 | 1 | 02.723.003 | Pulley For Pump D.78 x 1 3V |
| 16 | 1 | RP.010.040 | Washer D.10 x 40 |
| 17 | 1 | RP.010.030 | Washer D.10 x 30 mm |
| 18 | 1 | TE.010.025FT | Bolt TE M10 x 25 |
| 19 | 1 | SE.006.020 | Spring Pin D.6 x 20 |
| 20 | 1 | 02.723.001 | Special Washer mm3 |

2.8 BELT TENSION ROLLER



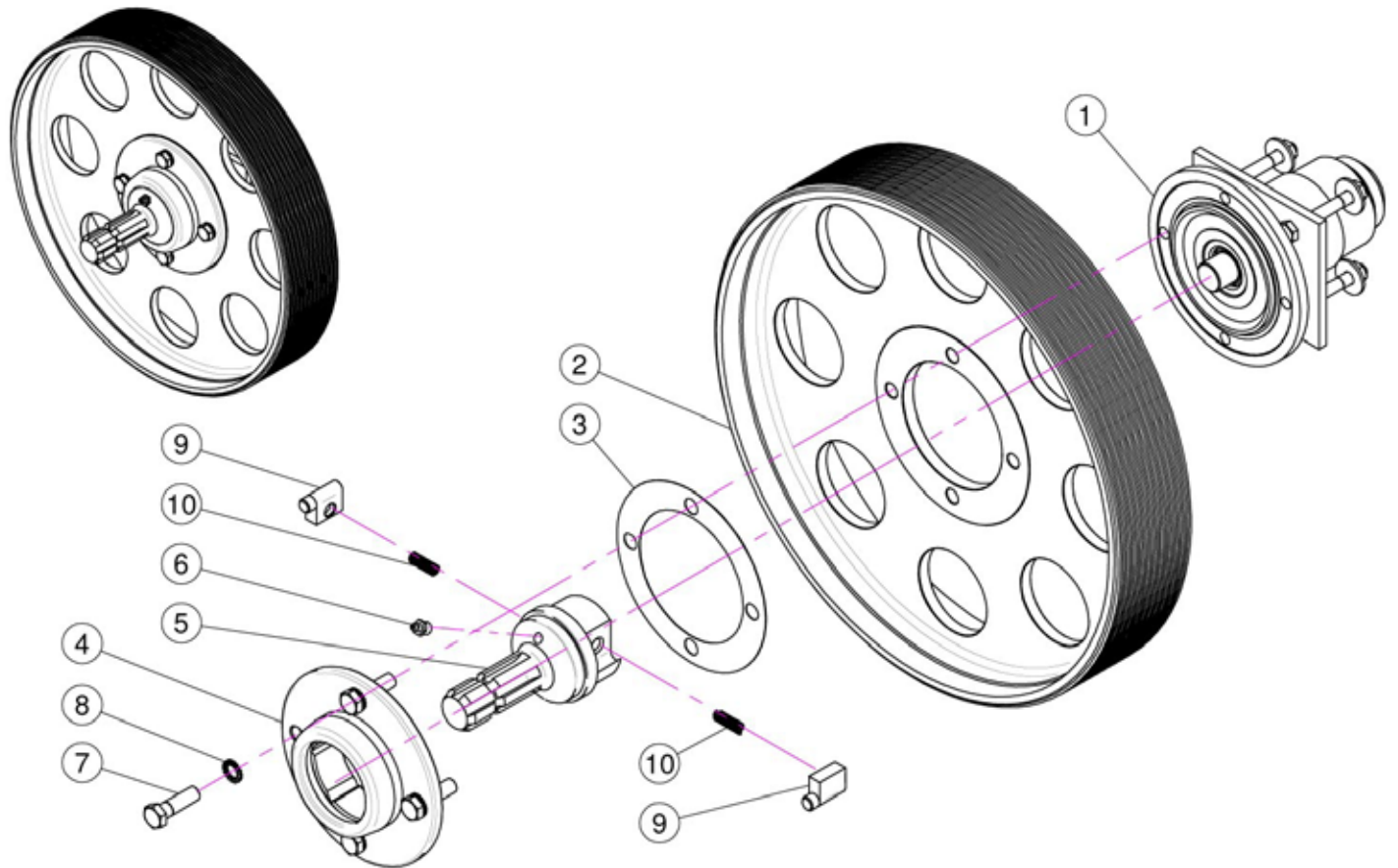
| REF. | QTY. | PART NO. | DESCRIPTION |
|-------------|-------------|-----------------|---------------------------|
| 1 | 1 | 04.095.000 | Belt Stretcher Housing |
| 2 | 1 | 04.835.000 | Belt Stretcher Pin |
| 3 | 1 | KM.005.000 | Nut KM5 |
| 4 | 2 | 04.585.000 | Anti-Dust Cover |
| 5 | 2 | K6.205.2RS | Roller Bearing 6205-2RS |
| 6 | 2 | I0.052.000 | Internal D.52 Circlip |
| 7 | 1 | 04.083.000 | Roller For Belt Stretcher |
| 8 | 1 | 04.084.000 | Spacer For Belt Stretcher |
| 9 | 1 | E0.025.000 | External D.25 Circlip |
| 10 | 1 | 05.653.100 | Belt Stretcher Fork |
| 11 | 1 | 04.593.000 | Pin |
| 12 | 1 | 00.100.002 | Clip |
| 13 | 1 | D0.12.5587G | M12 Nut |
| 14 | 1 | 04.583.000 | Special Screw |
| 15 | 1 | RP.019.000 | Washer D.19 |
| 16 | 1 | 04.093.100 | Spring |
| 17 | 1 | 20.260.000 | Special Washer D.12 |
| 18 | 1 | E0.080.000 | External D 80 Circlip |
| 19 | 1 | MB.016.000 | Tooth Lock Washer MB 16 |
| 20 | 1 | 04.099.000 | Nut M 80 x 2 |

2.9 LUBRICATION TUBING



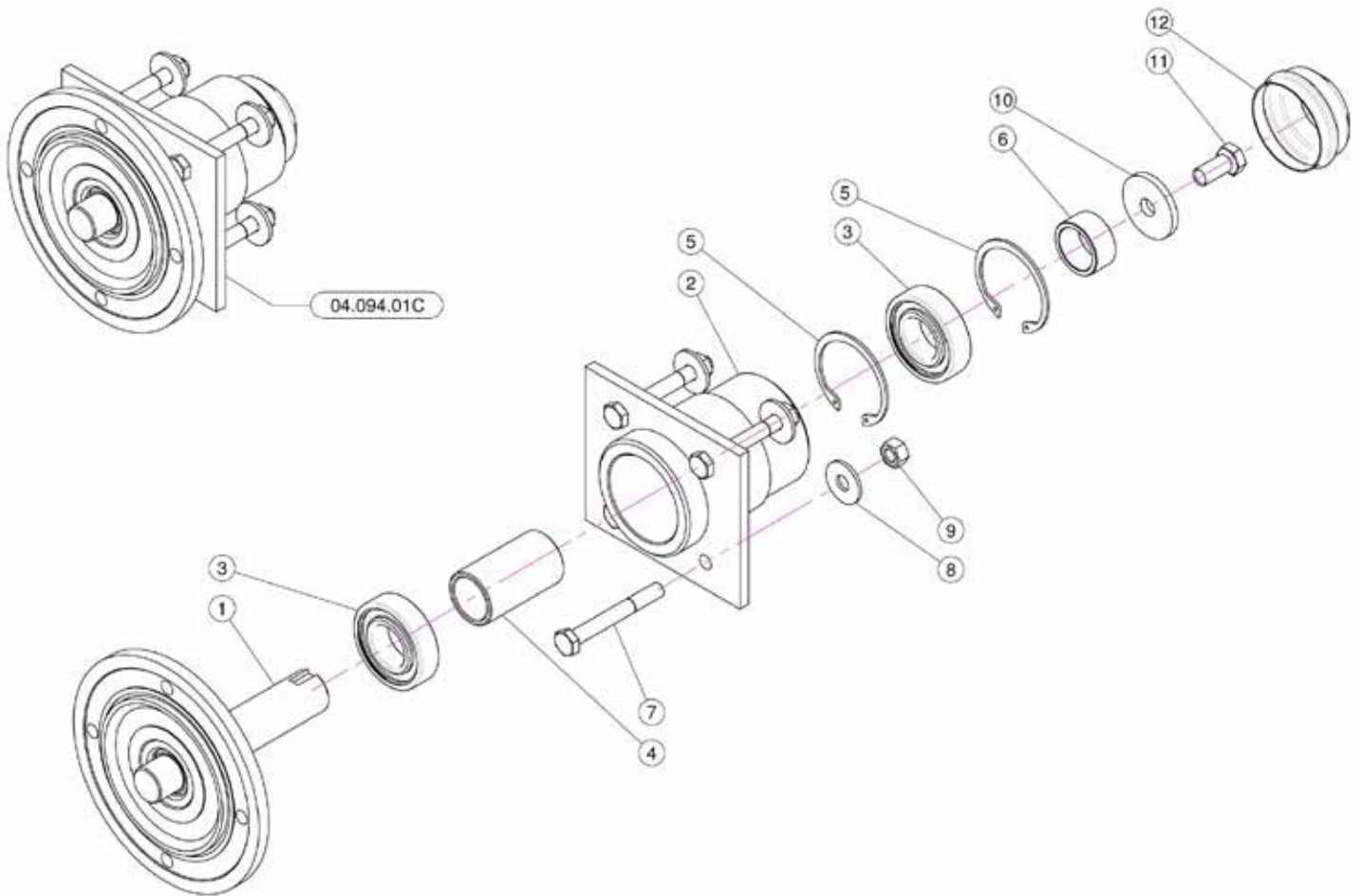
| REF. | QTY. | PART NO. | DESCRIPTION |
|-------------|-------------|-----------------|--|
| 1 | 1 | 20.790.000 | Drain Pipe 3/8" |
| 2 | 1 | 40.266.000 | Oil Exhaust Plug |
| 3 | 1 | 02.013.000 | Plug G1/4" |
| 4 | 1 | 00.414.100 | Straight Hose D.11 1/4" With Bleed |
| 5 | 1 | 02.355.000 | Nylon Assembly Clamp |
| 6 | As Req'd | 02.217.000 | Hose D.8 x 13 L=250 (Per Foot) |
| 7 | 1 | FC.014.5.016 | Hose Clamp |
| 8 | 1 | 20.792.000 | Straight Hose D.11 G 1/4" For Breather |
| 9 | 1 | 40.269.000 | Filling Plug With Dipstick L=215 |
| 10 | 1 | 40.272.000 | Filling Pipe L=201 |

2.10 MAIN PULLEY & OVERRUNNING CLUTCH



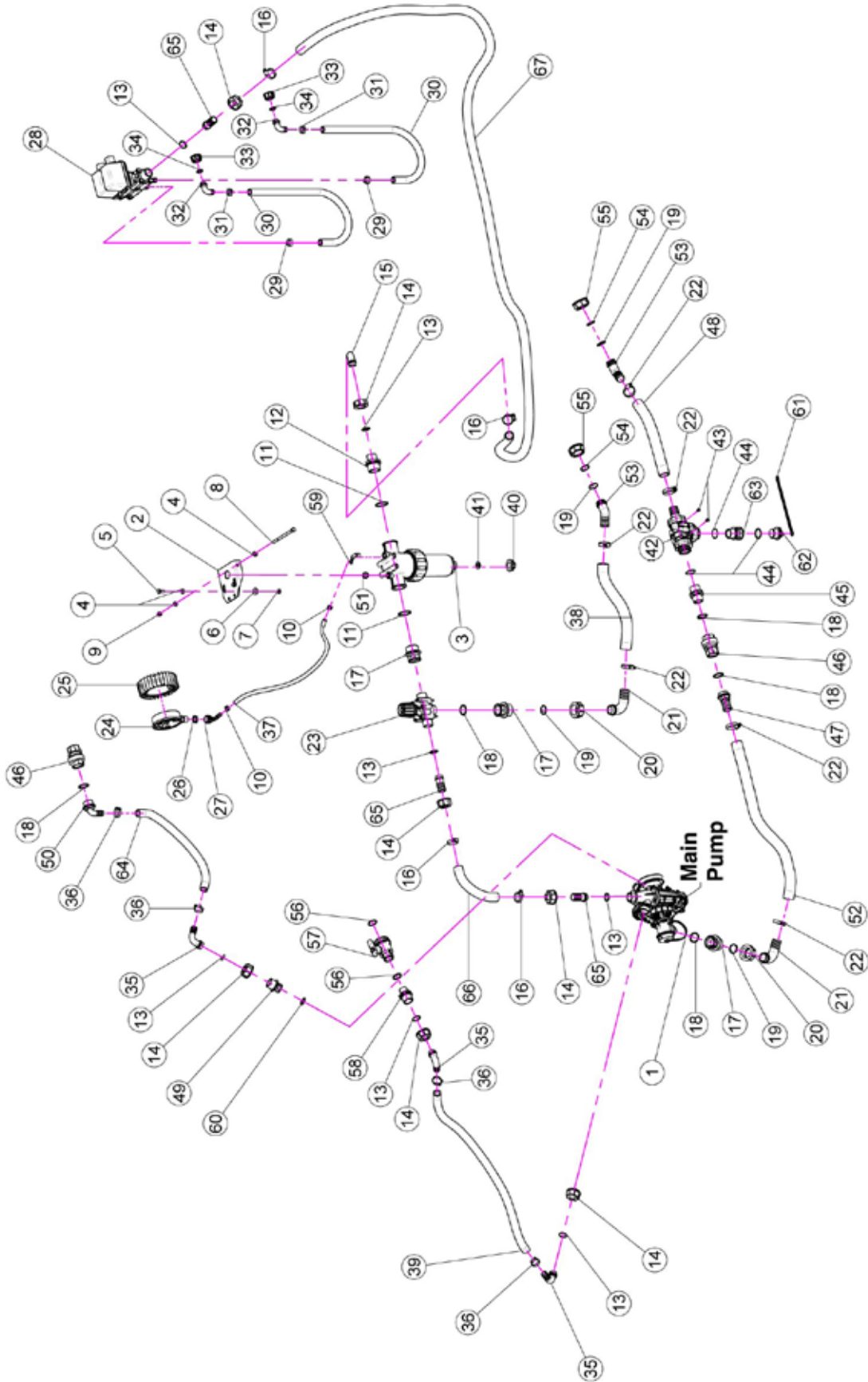
| <u>REF.</u> | <u>QTY.</u> | <u>PART NO.</u> | <u>DESCRIPTION</u> |
|-------------|-------------|-----------------|--------------------|
| 1 | 1 | 04.094.01C | Clutch |
| 2 | 1 | 00.450.J32 | Pulley |
| 3 | 1 | 04.719.000 | Gasket |
| 4 | 1 | 04.066.000 | Body |
| 5 | 1 | 03.701.000 | Rotor |
| 6 | 1 | ID.010.001 | Grease Nipple |
| 7 | 4 | TE.012.040F | Bolt M12 x 40 |
| 8 | 4 | RD.012.000 | Tab Washer D.12 |
| 9 | 2 | 02.502.002 | Pin |
| 10 | 2 | 02.502.001 | Spring |

2.11 FAN SUPPORT HUB ASSEMBLY



| REF. | QTY. | PART NO. | DESCRIPTION |
|-------------|-------------|-----------------|----------------------------------|
| 1 | 1 | 04.085.000 | Shaft |
| 2 | 1 | 04.094.000 | Clutch |
| 3 | 2 | K6.206.2RS | Bearing |
| 4 | 1 | 04.060.000 | Spacer |
| 5 | 2 | I0.062.000 | Internal D.62 Circlip |
| 6 | 1 | 04.590.000 | Spacer |
| 7 | 4 | TE.010.080 | Screw TE M10 x 80 |
| 8 | 4 | RP.010.030 | Washer D.10 x 30 mm |
| 9 | 4 | D0.10.5587G | Nut M10 |
| 10 | 1 | 20.810.000 | Special Washer For Lower Support |
| 11 | 1 | TE.012.025FT | Bolt TE M12 x 1.25 |
| 12 | 1 | 04.062.001 | Cover |

2.12 LIQUID FLOW PATH



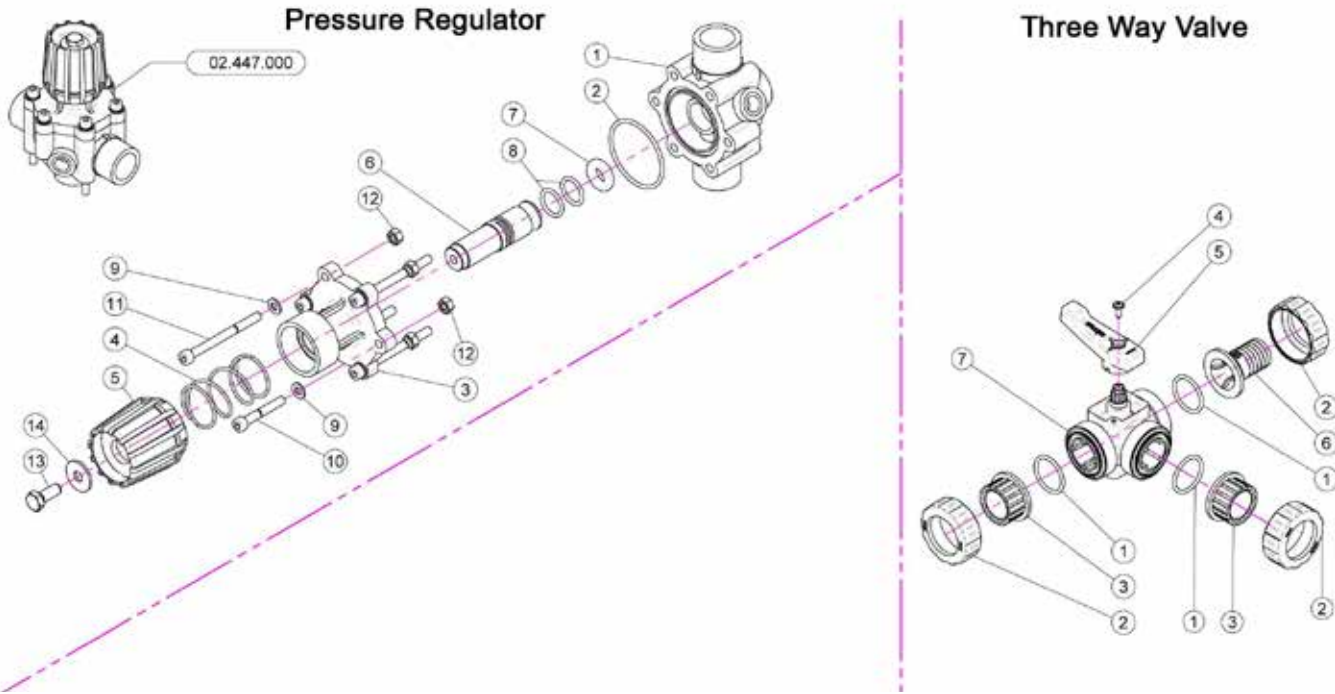
2.12 LIQUID FLOW PATH

| <u>REF.</u> | <u>QTY.</u> | <u>PART NO.</u> | <u>DESCRIPTION</u> |
|-------------|-------------|-----------------|----------------------------------|
| 1 | 1 | 02.157.050 | Pump |
| 2 | 1 | 20.519.100 | Bracket |
| 3 | 1 | 02.450.110 | Line Filter 1" 1/4 Female |
| 4 | 4 | RP.008.000 | Washer D.8 |
| 5 | 2 | TE.008.025T | Screw TE M8 x 25 |
| 6 | 2 | RP.008.024 | Washer D.8 x 24 |
| 7 | 2 | D0.08.5588G | M8 6S Big Lead Nut 5588 |
| 8 | 1 | TE.008.130 | Screw M8 x 130 |
| 9 | 1 | DA.008.0AG | Self Locking Nut M8 |
| 10 | 2 | FC.013.5.015 | Hose Clamp |
| 11 | 2 | OR.000.144 | O-Ring D.39.69 x 3.53 |
| 12 | 1 | 00.045.012 | 1" 1/4 M - 1" M Reducer Nipple |
| 13 | 7 | OR.000.132 | 23.81 x 2.62 O-Ring Gasket |
| 14 | 7 | 00.055.24.2 | 1" Fly Nut |
| 15 | 1 | 00.055.037 | D.25 Hosetail |
| 16 | 4 | F0.023.035I | Stainless Steel Clip |
| 17 | 3 | 02.374.000 | M./F. 1" F/1" 1/4 M Reduction |
| 18 | 6 | OR.004.118 | 29.75 x 3.53 O-Ring Gasket |
| 19 | 4 | OR.003.112 | O-Ring D.28.24 x 2.62 |
| 20 | 2 | 00.058.006 | 1" 1/4 Fly Nut |
| 21 | 2 | 00.058.004 | D.30 Hosetail |
| 22 | 6 | F0.025.040I | Stainless Steel Clip |
| 23 | 1 | 02.447.000 | 3 Way Valve |
| 24 | 1 | 02.445.000 | Pressure Gauge Ø100 INOX 0-6 Bar |
| 25 | 1 | 02.470.000 | Pressure Gauge Guard |
| 26 | 1 | 24.072.000 | Brass Fly Nut 1/2" |
| 27 | 1 | 21.012.000 | D.12 Hosetail |
| 28 | 1 | 02.390.08C | Electro Valves |
| 29 | 2 | FC.021.5.023 | Hose Clamp 21.5 - 23 |
| 30 | As Req'd | 02.211.000 | Hose D.16 L=1100 (Per Foot) |
| 31 | 2 | FC.023.5.025 | Hose Clamp 23.5 - 25 |
| 32 | 2 | 00.055.046 | Curved Union With R.H. D.17 |
| 33 | 2 | 00.055.045 | 3/4" Fly Nut |
| 34 | 2 | 02.349.000 | 17 x 23 x 3 Flat Gasket |
| 35 | 3 | 00.055.038 | Curved Union With R.H. D.19 |
| 36 | 4 | FC.027.5.029 | Hose Clamp 27.08 - W8 |
| 37 | As Req'd | 02.217.000 | Hose D.8 x 13 L=400 (Per Foot) |
| 38 | As Req'd | 02.238.000 | Hose D.30 x 41 L=550 (Per Foot) |
| 39 | As Req'd | 02.212.000 | Hose D.19 x 28 L=1000 (Per Foot) |
| 40 | 1 | 02.182.000 | Female 3/4" Cap |
| 41 | 1 | 02.030.010 | Gasket |
| 42 | 1 | 21.058.300 | Three Ways Valve |

2.12 LIQUID FLOW PATH

| <u>REF.</u> | <u>QTY.</u> | <u>PART NO.</u> | <u>DESCRIPTION</u> |
|--------------------|--------------------|------------------------|----------------------------------|
| 43 | 2 | TA.006.012P | Screw M6 x 12 |
| 44 | 2 | OR.002.125 | 31.47 x 1.78 O-Ring Gasket |
| 45 | 1 | 00.055.034 | Nipple 1" / 1" GAS |
| 46 | 2 | 21.149.000 | Valve 1" F-F. |
| 47 | 1 | 00.422.100 | Male Connector RH 30 1" GAS |
| 48 | As Req'd | 02.238.000 | Hose D.30 38 L=1200 (Per Foot) |
| 49 | 1 | 21.186.000 | Reducer Nipple 1" M - 1/2" F |
| 50 | 1 | 21.193.000 | Hosetail 90° 1" R.H. |
| 51 | 1 | TM.014.000 | Male Plug 1/4" |
| 52 | As Req'd | 02.238.000 | Hose D.30 x 38 L=500 (Per Foot) |
| 53 | 2 | 02.339.000 | 45° Hosetail |
| 54 | 2 | OR.003.106 | O-Ring D.26.65 x 2.62 |
| 55 | 2 | 00.493.000 | 1" 1/4 Fly Nut |
| 56 | 2 | OR.000.134 | O-Ring D.25.8 x 3.53 |
| 57 | 1 | 02.395.000 | Valve 3/4" GAS F.F. Ball |
| 58 | 1 | 02.293.000 | 1" M - 3/4" M Reducer Nipple |
| 59 | 1 | 21.084.000 | Hosetail 90° WES 8/R1/4 |
| 60 | 1 | OR.004.081 | 20.22 x 3.53 O-Ring Gasket |
| 61 | 1 | 21.183.000 | Cap Stop |
| 62 | 1 | 21.182.000 | Packing 1" M |
| 63 | 1 | 02.384.000 | 1" M - 1" F Reducer Nipple |
| 64 | As Req'd | 02.212.000 | Hose D.19 L=1000 (Per Foot) |
| 65 | 3 | 00.055.021 | Straight Hose R.H. D.25 |
| 66 | As Req'd | 20.809.000 | Hose D.25 x 32 L=260 (Per Foot) |
| 67 | As Req'd | 20.770.000 | Hose D.25 x 32 L=2870 (Per Foot) |

2.13 PRESSURE REGULATOR & 3 WAY VALVE



PRESSURE REGULATOR

REF. QTY. PART NO.

| | | |
|----|---|-------------|
| 1 | 1 | 02.447.001 |
| 2 | 1 | OR.003.193 |
| 3 | 1 | 02.447.009 |
| 4 | 1 | 02.447.011 |
| 5 | 1 | 02.447.010 |
| 6 | 1 | 02.447.014 |
| 7 | 1 | 02.447.005 |
| 8 | 2 | OR.003.068 |
| 9 | 6 | RP.006.000 |
| 10 | 2 | TCE.006.040 |
| 11 | 4 | TCE.006.070 |
| 12 | 6 | D0.06.5588G |
| 13 | 1 | TE.008.025I |
| 14 | 1 | RP.008.024I |

DESCRIPTION

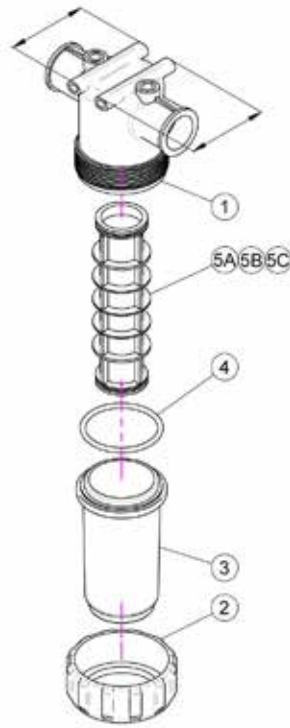
| |
|------------------------------|
| Body For Regulator Valve |
| O-Ring Gasket 48.89 x 2.62 |
| Upper Flange |
| Spring |
| Regulation Valve Knob |
| Valve Pin |
| Special O-Ring For Gate 2447 |
| O-Ring Gasket 17.12 x 2.62 |
| Washer D.6 |
| Bolt TCE M6 x 40 |
| Bolt TCE M6 x 70 |
| Nut M6 |
| INOX 8 x 25 Screw |
| INOX Washer D.8 x 24 |

3-WAY VALVE

| | | |
|---|---|-------------|
| 1 | 3 | OR.004.137 |
| 2 | 3 | 21.058.007 |
| 3 | 2 | 21.058.006 |
| 4 | 1 | TA.05.5.016 |
| 5 | 1 | 21.058.003 |
| 6 | 1 | 21.058.009 |
| 7 | 1 | 21.058.110 |

| |
|-------------------------------|
| O-Ring D.34.52 x 3.53 |
| Valve Union Nut |
| Valve End Connector |
| Self Threaded Screw M5.5 x 16 |
| Valve Handle |
| Rubber Holder D.30 |
| Body of Three Way Valve |

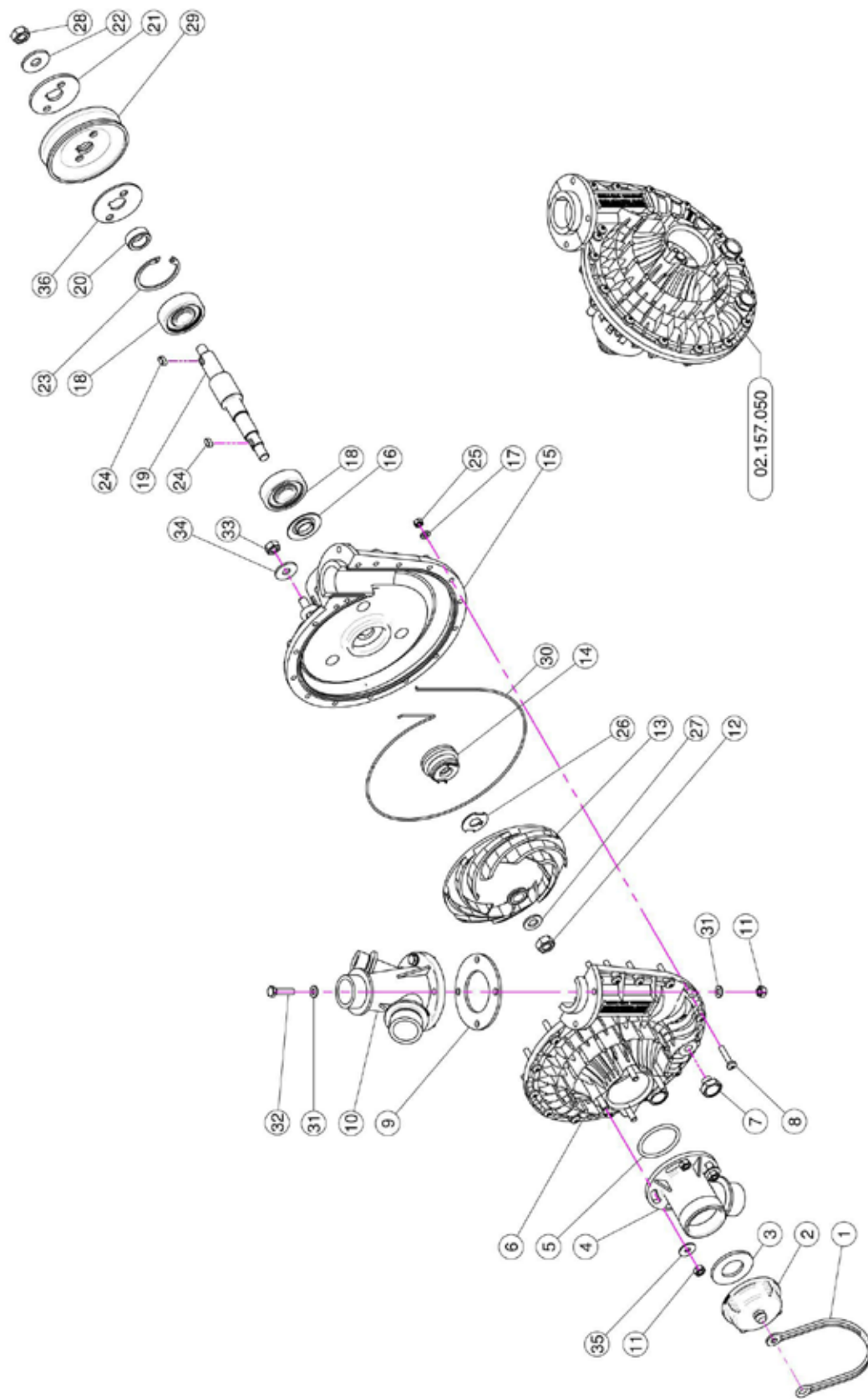
2.14 SUCTION FILTER ASSEMBLY



02.450.010

| <u>REF.</u> | <u>QTY.</u> | <u>PART NO.</u> | <u>DESCRIPTION</u> |
|-------------|-------------|-----------------|-------------------------------------|
| 1 | 1 | 02.450.001 | Line Filter Body |
| 2 | 1 | 02.450.003 | Ring Nut Filter In Line |
| 3 | 1 | 02.450.011 | Lid Filter With Unloading |
| 4 | 1 | OR.000.178 | O-Ring D.74.63 x 5.33 |
| 5A | 1 | 02.450.004C | Cartridge w/ O-Ring 50 Mesh (Blue) |
| 5B | 1 | 02.450.204C | Cartridge w/ O-Ring 80 Mesh (Grey) |
| 5C | 1 | 02.450.104C | Cartridge w/ O-Ring 32 Mesh (White) |

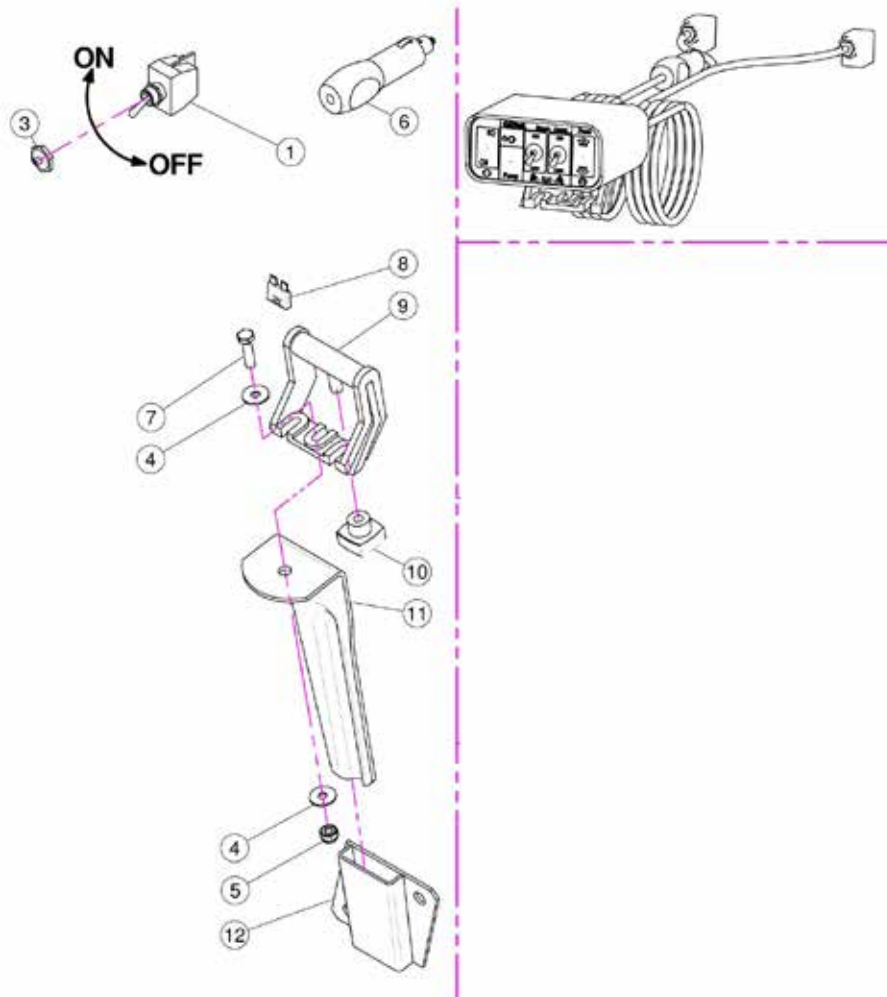
2.15 MAIN PUMP BREAKDOWN



2.15 MAIN PUMP BREAKDOWN

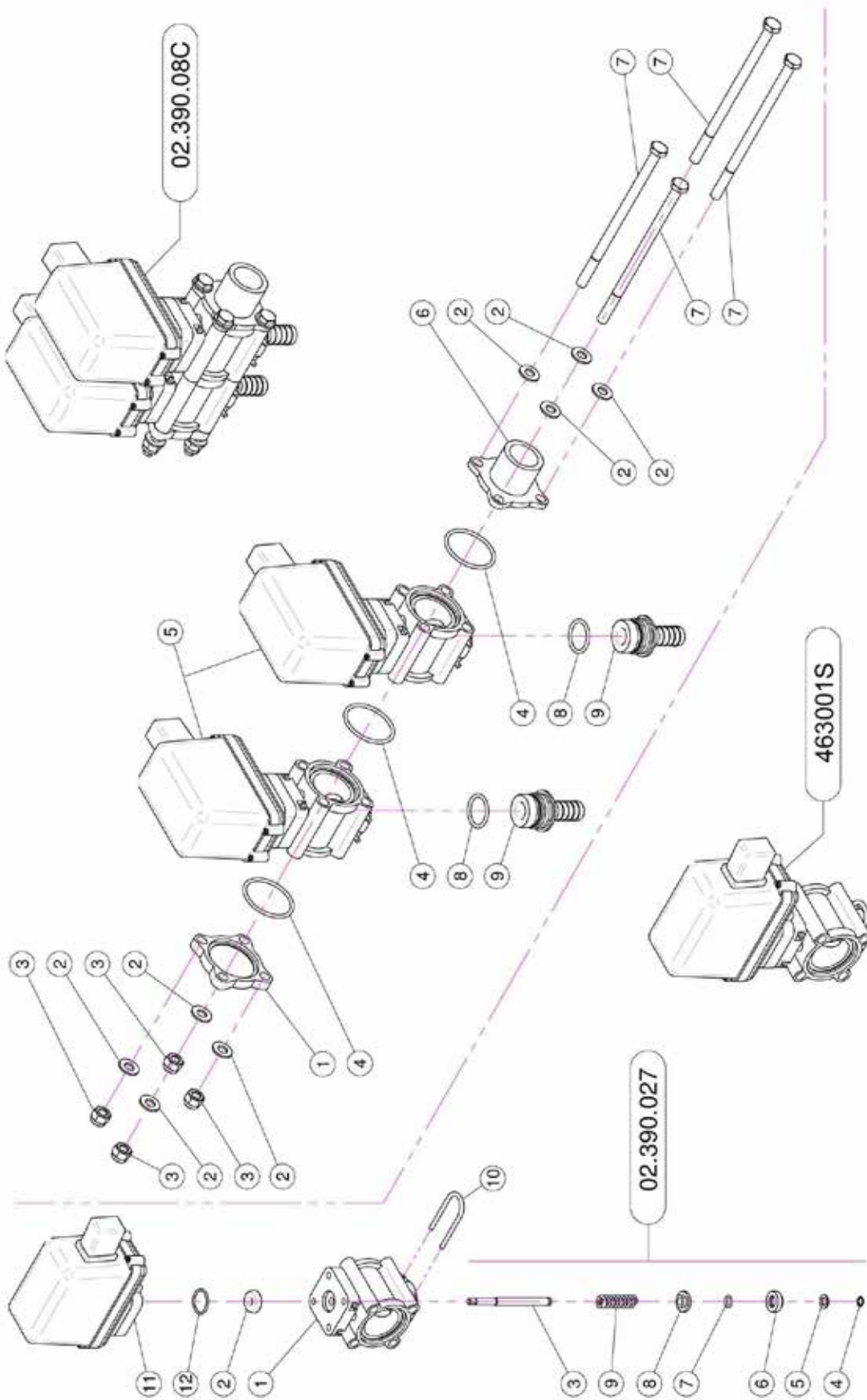
| <u>REF.</u> | <u>QTY.</u> | <u>PART NO.</u> | <u>DESCRIPTION</u> |
|-------------|-------------|-----------------|------------------------------|
| 1 | 1 | 21.183.000 | Cap Stop |
| 2 | 1 | 02.120.000 | Rapid Thread Cap |
| 3 | 1 | 02.130.000 | 24 x 46 x 3 Rubber Gasket |
| 4 | 1 | 02.116.000 | Suction Fitting |
| 5 | 1 | OR.000.144 | O-Ring D.39.69 x 3.53 |
| 6 | 1 | 02.152.010 | Housing |
| 7 | 2 | TM.010.015 | M10 x 1.5 Cap |
| 8 | 17 | TC.05.25.85 | Cross Slotted Screw M5 x 25 |
| 9 | 1 | 02.179.000 | Rubber Gasket |
| 10 | 1 | 02.113.000 | Delivery Fitting |
| 11 | 8 | DOT.06.5587 | M6 Brass Nut 5587 |
| 12 | 1 | DOT.10.5587 | M10 Brass Nut |
| 13 | 1 | 02.153.000 | CD32 Pump Impeller |
| 14 | 1 | 00.085.024CS | Mechanical Seal |
| 15 | 1 | 02.151.010 | Pump Casing |
| 16 | 1 | 20.406.000 | Special Cover For Pump |
| 17 | 17 | RP.005.000 | Washer D.5 |
| 18 | 2 | K6.303.2RS | Roller Bearing |
| 19 | 1 | 02.155.010 | CD32 Pump Shaft |
| 20 | 1 | 02.722.000 | Bush |
| 21 | 1 | 02.723.001 | Special Washer 3 mm |
| 22 | 1 | RP.010.030 | Washer D.10 x 30 mm |
| 23 | 1 | I0.047.000 | Internal D.47 Circlip |
| 24 | 2 | L.05.05.10 | 5 x 5 x 10 Tang |
| 25 | 17 | DOT.05.5587 | M5 Brass Nut (5587) |
| 26 | 1 | 02.114.000 | INOX Special Washer |
| 27 | 1 | RP.010.00I | Washer D.10 INOX |
| 28 | 1 | D0.10.5588G | M10 6S Big Lead Nut 5588 |
| 29 | 1 | 02.723.002 | Pulley For Pump D.88 x 1 3 V |
| 30 | 1 | OR.C02.070 | OR Cord D.2 L=700 |
| 31 | 8 | RP.006.000 | Washer D.6 |
| 32 | 4 | TE.006.025T | Screw TE M6 x 25 |
| 33 | 3 | D0.08.5588G | M8 6S Big Lead Nut 5588 |
| 34 | 3 | RP.008.024 | Washer D.8 x 24 |
| 35 | 3 | RP.006.018 | Washer D.6 x 18 |
| 36 | 1 | 02.723.005 | Special Washer 2 mm |

2.16 CONTROL BOX 910208/T



| REF. | QTY. | PART NO. | DESCRIPTION |
|-------------|-------------|-----------------|----------------------------|
| 1 | 2 | 21.030.005 | Switch 2V 2P On-Off 10A |
| 3 | 2 | 21.030.007 | Switch Cap D.12 |
| 4 | 2 | RP.006.018 | Washer D.6 x 18 |
| 5 | 1 | DA.006.0AG | Self Locking Nut - High M6 |
| 6 | 1 | 21.030.008 | 12V Power Jack |
| 7 | 1 | TE.006.025T | Screw TE M6 x 25 |
| 8 | 1 | 21.030.004 | 10 Ah Fuse |
| 9 | 1 | 21.030.002 | Moving Fixing Bracket |
| 10 | 1 | 21.030.003 | Fixing Knob |
| 11 | 1 | 20.111.000 | Bracket |
| 12 | 1 | 20.107.000 | Female Bayonet Support |

2.17 ELECTRO VALVES



2.17 ELECTRO VALVES

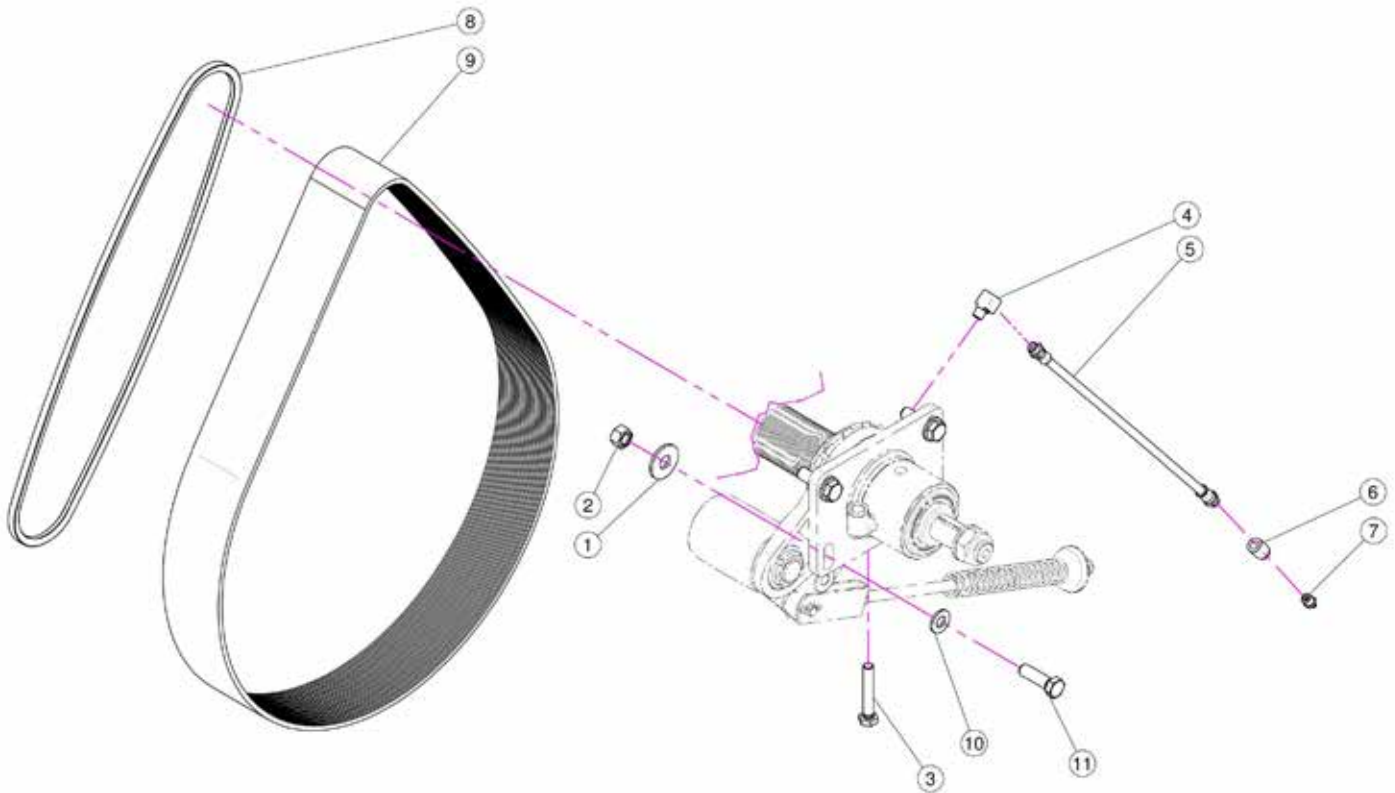
02.390.029

| <u>REF.</u> | <u>QTY.</u> | <u>PART NO.</u> | <u>DESCRIPTION</u> |
|-------------|-------------|-----------------|-----------------------|
| 1 | 1 | 02.390.007 | Valve Body |
| 2 | 1 | 02.390.008 | Gasket |
| 3 | 1 | 02.390.020 | Pin |
| 4 | 1 | 02.390.013 | Stop Ring |
| 5 | 1 | 02.390.014 | Washer 7.2 x 12 INOX |
| 6 | 1 | 02.390.015 | Lower Valve |
| 7 | 1 | 02.390.016 | O-Ring |
| 8 | 1 | 02.390.009 | Superior Valves |
| 9 | 1 | 02.390.011 | Spring |
| 10 | 1 | 21.130.005 | Fork |
| 11 | 1 | 02.390.028 | Solenoid Valve |
| 12 | 1 | OR.002.075 | D.18.77 x 1.78 O-Ring |

02.390.08C

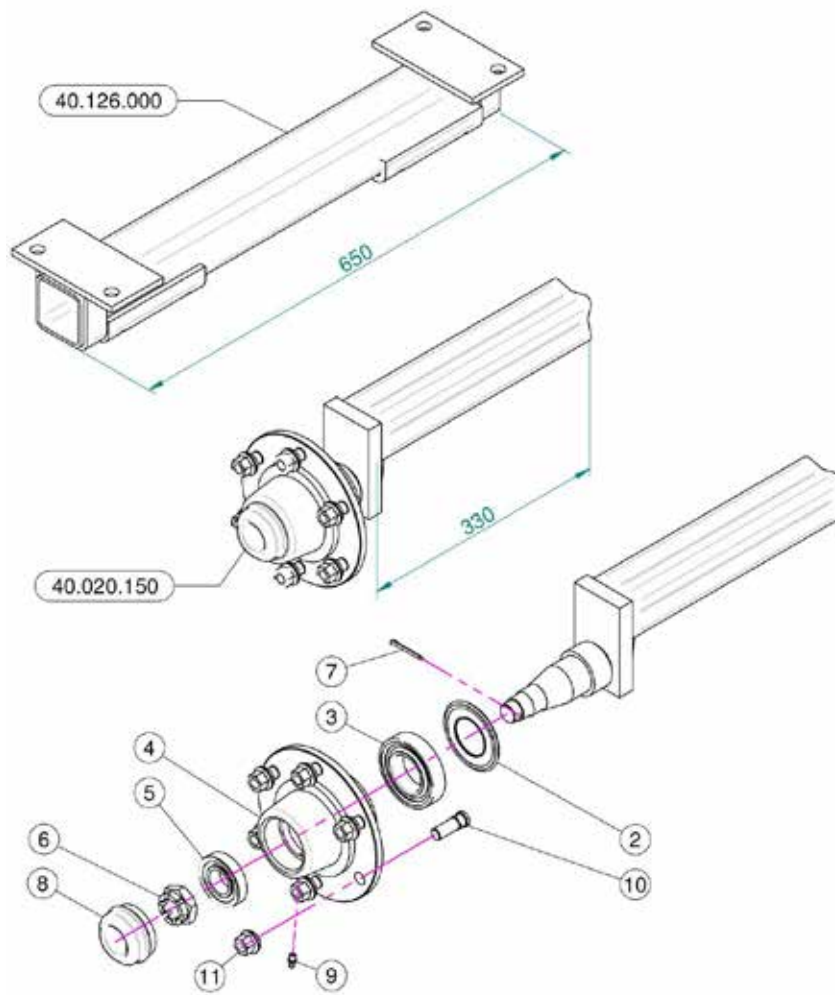
| | | | |
|---|---|------------|----------------------------|
| 1 | 1 | 02.390.017 | Valve Flange |
| 2 | 8 | RP.008.000 | Washer D.8 |
| 3 | 4 | DA.008.0AG | Self Locking Nut M8 |
| 4 | 3 | OR.003.156 | O-Ring Gasket 39.34 x 2.62 |
| 5 | 2 | 02.390.029 | Solenoid Valve |
| 6 | 1 | 02.390.018 | Connector |
| 7 | 4 | TE.008.150 | Screw TE M8 x 150 |
| 8 | 2 | OR.000.130 | 22.22 x 2.62 O-Ring Gasket |
| 9 | 2 | 02.406.000 | Hosetail D.16 |

2.18 PUMP & FAN BELTS



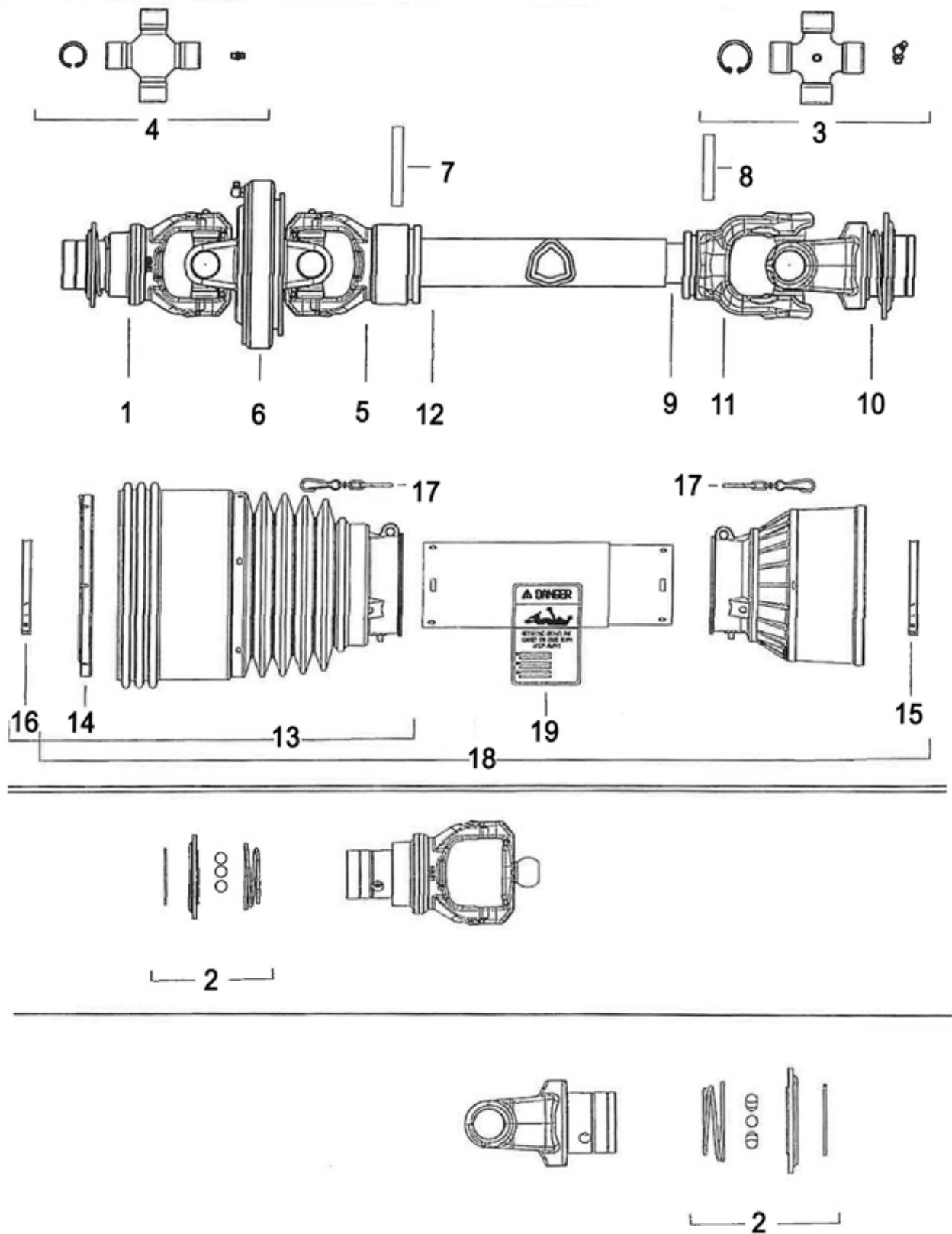
| REF. | QTY. | PART NO. | DESCRIPTION |
|-------------|-------------|-----------------|---------------------------------|
| 1 | 4 | RP.012.036 | Washer D12 x 36 |
| 2 | 4 | D0.12.5587G | M12 Nut |
| 3 | 1 | TE.010.060T | Screw TE M10 x 60 |
| 4 | 1 | 02.736.000 | 90 G. M10 x 1 Fitting |
| 5 | 1 | 02.738.040 | Greaser Extension M10 x 1 L=400 |
| 6 | 1 | 02.737.000 | Adaptor M10 |
| 7 | 1 | ID.010.001 | Grease Nipple |
| 8 | 1 | C0.500.03V | V-Belt |
| 9 | 1 | C0.650.J32 | Poly V-Belt |
| 10 | 4 | RP.012.000 | Washer D.12 |
| 11 | 4 | TE.012.040T | Bolt TE M12 x 40 |

2.19 AXLE & WHEEL HUBS



| <u>REF.</u> | <u>QTY.</u> | <u>PART NO.</u> | <u>DESCRIPTION</u> |
|-------------|-------------|-----------------|--------------------|
| 2 | 1 | 20.258.000 | Oil Cover |
| 3 | 1 | K0.030.209 | Bearing |
| 4 | 1 | 05.903.001 | Six Holes Flange |
| 5 | 1 | K0.030.206 | Bearing |
| 6 | 1 | DI.027.5594F | Six Castle Nut M27 |
| 7 | 1 | 20.259.000 | Split Pin |
| 8 | 1 | 04.062.001 | Cover |
| 9 | 1 | ID.006.001 | Greaser |
| 10 | 6 | 05.911.001 | Stud |
| 11 | 6 | 05.911.000 | Special Nut |

2.20 DRIVESHAFT - 7G4R086U2WR7R07



2.20 DRIVESHAFT - 7G4R086U2WR7R07

| <u>REF. NO.</u> | <u>QTY.</u> | <u>PART NO.</u> | <u>DESCRIPTION</u> |
|-----------------|-------------|-----------------|--------------------------|
| 1 | 1 | 5730E0584 | CV Yoke 1-3/8" - Z=6 #G4 |
| 2 | 2 | 435000323R | Collar Kit |
| 3 | 1 | 41204R | Cross Kit #4 |
| 4 | 1 | 4120E0051R40 | Cross Kit CV #G4 |
| 5 | 1 | 2150E6885 | Yoke, CV Outer Tube #G4 |
| 6 | 1 | 5110E0052 | CV Body #G4 |
| 7 | 1 | 341038000R10 | Roll Pin |
| 8 | 1 | 341048000 | Roll Pin |
| 9 | 1 | 225100860 | Inner Drive Tube |
| 10 | 1 | 5720E0355 | Yoke 1-3/8" - Z=6 |
| 11 | 1 | 204046852 | Yoke, Inner Tube |
| 12 | 1 | 125161500 | CV Outer Drive Tube #G4 |
| 13 | 1 | 219041401 | CV Shield Cone |
| 14 | 1 | 2550E0005R02 | CV Shield Bearing |
| 15 | 1 | 255041001R02 | Shield Bearing Inner |
| 16 | 1 | 255041002R02 | Shield Bearing Outer |
| 17 | 2 | AS101 | Safety Chain |
| 18 | 1 | 5CG4121FXWS | Complete Shield |
| 19 | 1 | 399CEE051 | Safety Decal |

3 LIMITED WARRANTY



GEARMORE, INC., warrants each new Gearmore product to be free from defects in material and workmanship for a period of twelve (12) months from date of purchase to the original purchaser. This warranty shall not apply to implements or parts that have been subject to misuse, negligence, accident, or that have been altered in any way.

Our obligation shall be limited to repairing or replacement of any part, provided that such part is returned within thirty (30) days from date of failure to Gearmore through the dealer from whom the purchase was made, transportation charges prepaid.

This warranty shall not be interpreted to render us liable for injury or damages of any kind or nature, direct, consequential or contingent, to person or property. This warranty does not extend to loss of crops, loss because of delay in harvesting or any other expenses, for any other reasons.

Gearmore in no way warranties engines, tires, or other trade accessories, since these items are warranted separately by these respective manufacturers.

Gearmore reserves the right to make improvements in design or changes in specification at any time, without incurring any obligations to owners or units previously sold.

Please be advised that all warranty work done by your dealer must be approved by Gearmore before work begins.

GEARMORE, INC.
13477 Benson Ave.
Chino, CA 91710

Always refer to and heed machine operating warning decals on machine.

*To validate the warranty on this product, please log-in to our website - www.gearmore.com.
You will find "warranty registration" listed at the top of our homepage.*