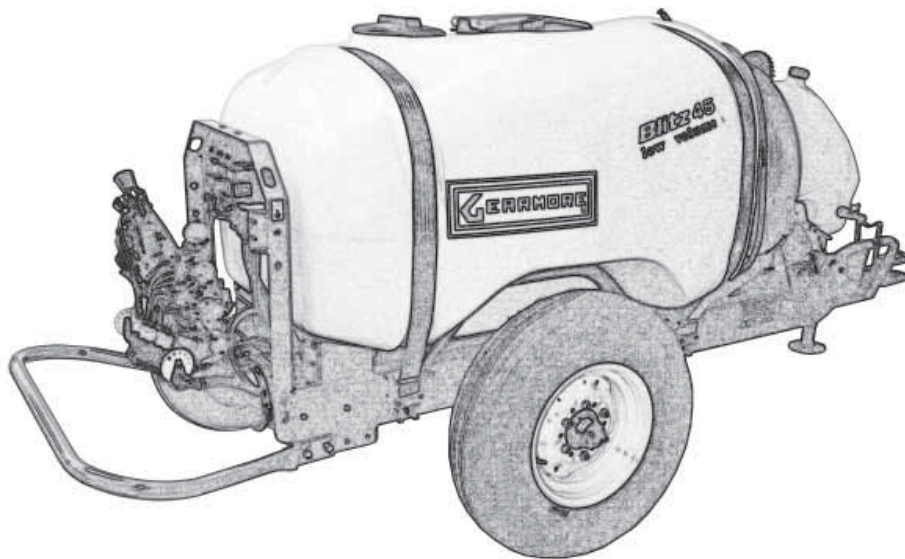


GEARMORE INC.

VENTURI AIR SPRAYERS



**Parts Manual For
Model T45N1-800
200 Gallon Capacity**

August 2013

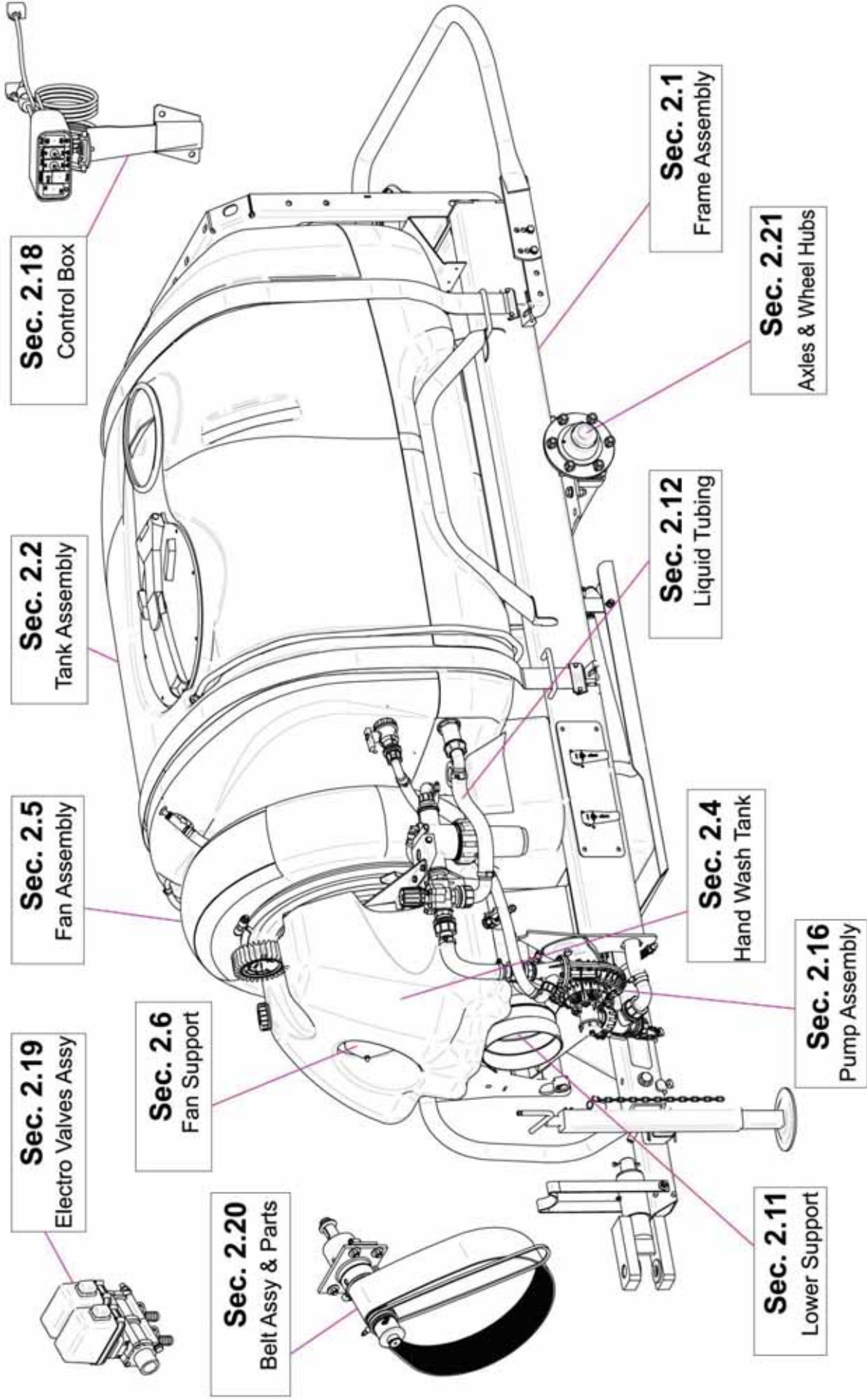


TABLE OF CONTENTS

<u>SECTION</u>	<u>DESCRIPTION</u>	<u>PAGE</u>
1	Introduction	1
1.1	Purchaser's Responsibility	1
1.2	Serial Number Information	1
2	Replacement Parts	2 - 29
2.1	Frame Assembly.....	2-4
2.2	Tank Assembly.....	5-6
2.3	Tank Fittings & Cover	7-8
2.4	Hand Wash Tank	9
2.5	Fan Assembly	10
2.6	Fan Support.....	11
2.7	Fan Support Breakdown.....	12
2.8	Belt Tension Roller.....	13
2.9	Lubrication Tubing.....	14
2.10	Main Pulley & Overrunning Clutch.....	15
2.11	Fan Support Hub Assy	16
2.12	Liquid Flow Path Manual Controls.....	17-19
2.13	Pressure Regulator & 3Way Valve.....	20
2.14	Suction Filter Assembly.....	21
2.15	Main Pump Breakdown.....	22-23
2.16	Control Box 910208/T.....	24
2.17	Electro Valves.....	25-26
2.18	Pump & Fan Belts	27
2.19	Axle & Wheel Hubs	28
2.20	Driveshaft	29
3	Limited Warranty	30

1 INTRODUCTION

This manual contains parts diagrams and replacement parts lists. Do not modify the equipment in any way. Unauthorized modification may impair the function and/or safety and could affect the life of the equipment.

It is the responsibility of the owner to make sure the machine is maintained properly, and that all parts are in working order.

Where replacement parts are necessary for periodic maintenance and servicing, genuine factory replacement parts ***MUST*** be used to restore your equipment to original specifications. The manufacturer will not be responsible for injuries or damages caused by use of unapproved parts and/or accessories.

The manufacturer reserves the right to make improvements to the machinery and parts at any time and at their discretion.

OPERATOR ORIENTATION - The directions left, right, front and rear, are as seen from the driver's seat and facing in the direction of travel.

1.1 PURCHASER'S RESPONSIBILITY

It is the responsibility of the purchaser and/or operator to.....

- Inspect the equipment and replace or repair any parts that are damaged or worn which under continued operation would cause damage, wear to other parts, or cause a safety hazard.
- Return the equipment or parts to the authorized dealer, from where it was purchased, for service or replacement of defective parts that are covered by warranty. (The factory may inspect equipment or parts before warranty claims are honored.)
- Payment of all costs incurred by the dealer for traveling to or transporting the equipment for warranty inspection and or claims.

1.2 MODEL / SERIAL NUMBER

NAME: _____

PURCHASED FROM: _____

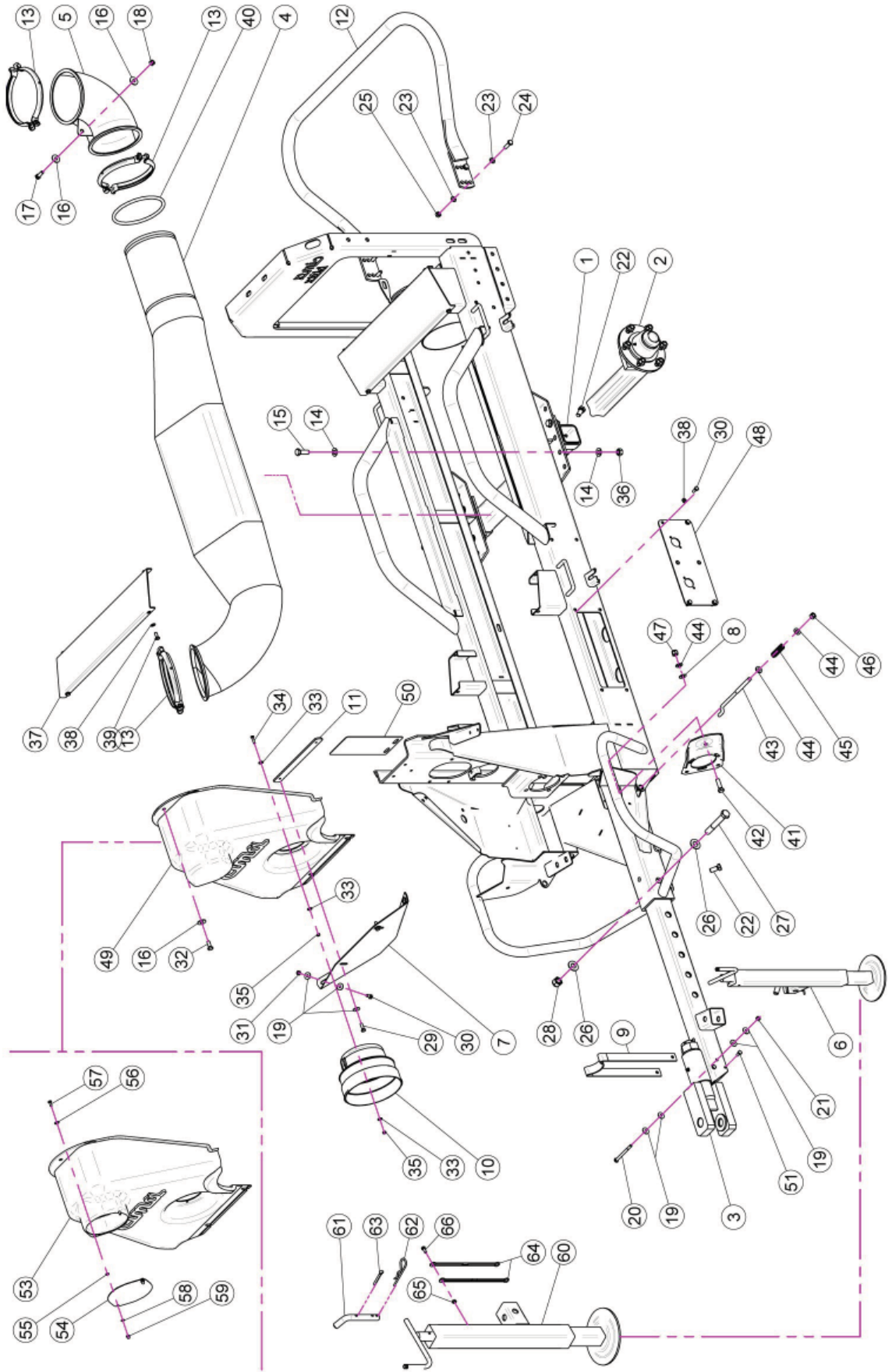
DATE OF PURCHASE: _____

MODEL NUMBER: _____

SERIAL NUMBER: _____

2 REPLACEMENT PARTS

2.1 FRAME ASSEMBLY



2.1 FRAME ASSEMBLY

<u>REF.</u>	<u>QTY.</u>	<u>PART NO.</u>	<u>DESCRIPTION</u>
1	1	40.126.000	Axle
2	2	40.020.150	Hub 6 Colonnette
3	1	40.136.200	Drawbar
4	1	40.141.000	Air Way Tunnel
5	1	05.615.000	Elbow D.175 90°
6	1	04.993.070C	Extractable Jackstand
7	1	20.531.000	Carter Fixing Plate
8	1	MT.012.000	Washer D.12
9	1	20.409.000	Shaft Support
10	1	20.440.000	Shaft Cone D.210
11	1	20.532.000	Front Housing Blocking Plate
12	1	40.000.000	Bumper
13	3	05.616.000	Pipe Clamp D.175
14	8	RP.014.000	Washer D.14
15	4	TE.014.040T	Screw TE M14 x 40
16	3	RP.010.030	Washer D.10 x 30 mm
17	1	TE.010.030T	Screw TE M10 x 30
18	1	D0.10.5587G	Nut M10
19	10	RP.008.024	Washer D.8 x 24
20	1	TE.008.100	Screw TE M8 x 100
21	1	DA.008.0AG	Self Locking Nut M8
22	6	TE.014.030T	Screw TE M14 x 30
23	8	RP.010.000	Washer D.10
24	4	TE.010.035T	Screw TE 10 x 35
25	4	D0.10.5587G	Nut M10
26	2	RP.018.000	Washer
27	1	TE.018.120	Screw TE M18 x 120
28	1	DA.018.0AG	Self Locking Nut M18
29	2	TE.008.025T	Screw TE M8 x 25
30	10	TE.008.020T	Screw TE 8 x 20
31	2	D0.08.5588G	Nut M8
32	1	TE.010.025T	Screw TE 10 x 25T
33	9	RD.006.000	Tab Washer D.6
34	3	TE.006.025T	Screw TE M6 x 25
35	6	D0.06.5588G	Nut M6
36	4	D0.014.5587G	Nut M14
37	2	40.301.000	Plate Tank
38	12	RP.008.000	Washer D.8
39	4	TE.008.025T	Screw TE M8 x 25
40	1	40.147.000	Gasket For Tunnel 45-50
41	1	02.978.000SX	Bracket
42	1	TE.012.040T	Bolt TE M12 x 40
43	1	21.005.000	Belt Stretcher For Pump

2.1 FRAME ASSEMBLY

<u>REF.</u>	<u>QTY.</u>	<u>PART NO.</u>	<u>DESCRIPTION</u>
44	3	RP.012.000	Washer D.12
45	1	02.964.000	CD 32 Pump Spring
46	1	DOT.12.5587	M12 Brass Nut
47	1	DA.012.0AG	Nut M12
48	1	40.378.000	Plate
49	1	04.866.150	Fan Housing 1 Pump
50	1	50.355.000	Product Note Support
51	2	TE.008.016T	Screw TE M8 x 16

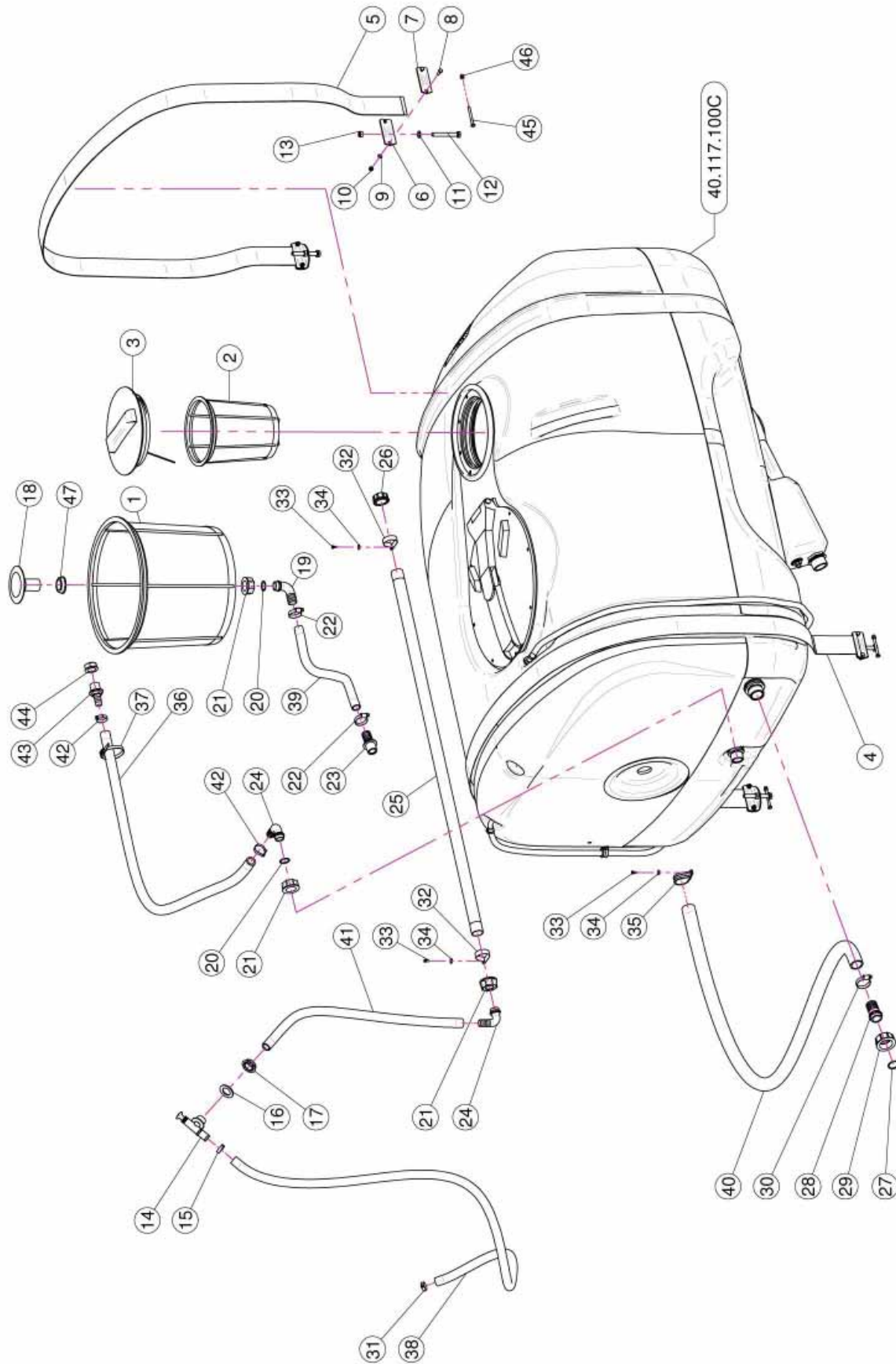
FAN GUARD

53	1	04.866.050	Fan Housing 1 Pump
54	1	40.333.000	Fan Clutch Lid
55	2	D0.06.5589G	Nut M6
56	2	RD.006.000	Tab Washer D.6
57	2	TE.006.016T	Screw TE M6 x 16
58	2	RP.006.000	Washer D.6
59	2	DC.06.5721I	Nut DIN 1587 6 x 1-6-10

TONGUE JACK

60	1	04.993.070	Jackstand Body
61	1	20.505.000	Pin Jackstand
62	1	00.100.004	Split Pin D.4
63	1	CP.006.040I	Pin D.6 Lg. 40
64	2	21.183.000	Cap Stop
65	1	D0.06.5588G	Nut M6
66	1	TE.006.016T	Screw TE M6 x 16

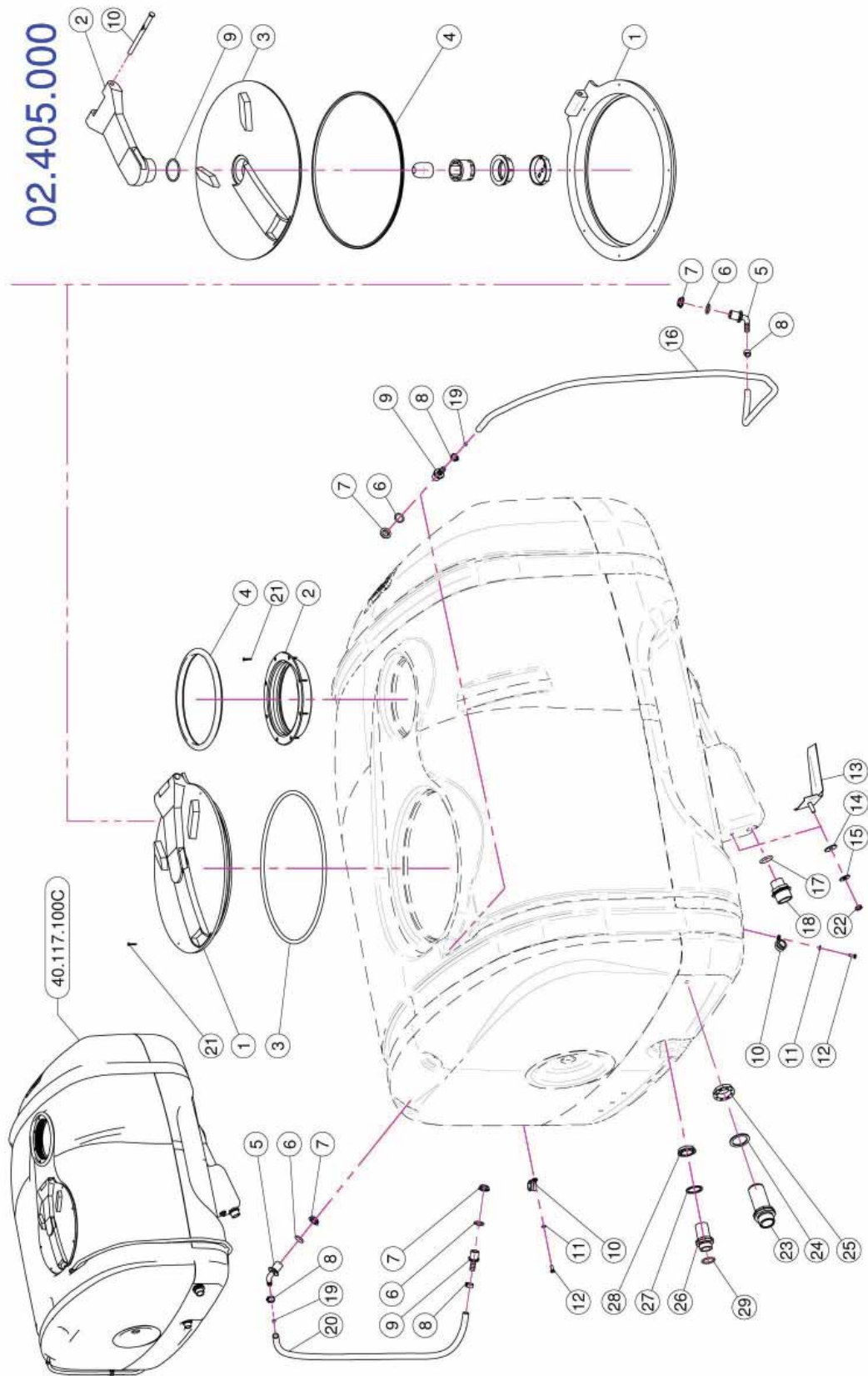
2.2 TANK ASSEMBLY



2.2 TANK ASSEMBLY

<u>REF.</u>	<u>QTY.</u>	<u>PART NO.</u>	<u>DESCRIPTION</u>
1	1	02.404.100	Basket Filter 400 x 330
2	1	02.298.000	Basket Filter D.204
3	1	02.476.100	Threaded Lid D.255 With Rope
4	1	02.481.277	Nylon Band 60 mm L=2770
5	1	02.481.253	Nylon Band 60 mm L=2530
6	4	20.512.000	Bracket
7	4	20.513.000	Shaped Plate
8	8	TE.006.020T	Screw TE M6 x 20
9	8	RP.006.000	Washer D.6
10	8	DA.006.0AG	Self Locking Nut - High M6
11	4	RP.010.000	Washer D.10
12	4	TE.010.080T	M10 x 80 Bolt
13	4	DOT.10.5587	M10 Brass Nut
14	1	02.135.000	Complete Piston Valve
15	1	FC.023.5.025	Hose Clamp 23.5 - 25
16	1	02.032.000	Gasket D.26 x 40 SP.2
17	1	00.541.000	Nut 3/4"
18	1	00.131.000	1" Vortex Damper Drive
19	1	00.055.037	D.25 Hosetail
20	2	OR.000.132	23.81 x 2.62 O-Ring Gasket
21	3	00.055.24.2	1" Fly Nut
22	2	F0.023.035I	Stainless Steel Clip
23	1	20.793.000	Hosetail R.H. D.25 3/4" GAS M.
24	1	00.055.038	Curved Union With R.H. D.19
25	1	40.035.001	Perforated Hose 1" L=1200
26	1	TF.001.000	Packing
27	1	OR.003.112	O-Ring D.28.24 x 2.62
28	1	00.058.028	Straight Hose R.H. D.30
29	1	00.058.006	1" 1/4 Fly Nut
30	1	F0.025.040I	Stainless Steel Clip
31	1	FC.022.5.024	Hose Clamp 22.5 - 24
32	2	FN.035.000	Sticker
33	3	TE.005.010I	Screw TE M5 x 10
34	3	RP.005.015I	Washer D.5 x 15
35	1	FG.040.000	Sticker
36	As Req'd	02.212.000	Hose D.19 x 28 L=130 (Per Foot)
37	3	02.355.000	Nylon Assembly Clamp
38	As Req'd	02.372.000	Hose D.19 L=1250 (Per Foot)
39	As Req'd	20.809.000	Hose D.25 L=960 (Per Foot)
40	As Req'd	02.238.000	Hose D.30 L=1200 (Per Foot)
41	As Req'd	02.212.000	Hose D.19 x 26 L=750 (Per Foot)
42	2	FC.027.5.029	Hose Clamp 27.08 - W8
43	1	00.418.000	Straight Union R.H. 19 3/4 GAS
44	1	02.182.100	Female 3/4" Cap
45	4	TE.006.060I	INOX M6 x 60 TE Screw
46	4	DC.06.5721I	Nut DIN 1587 6 x 1-6-10
47	1	00.542.000	Nut 1"

2.3 TANK FITTINGS & COVERS



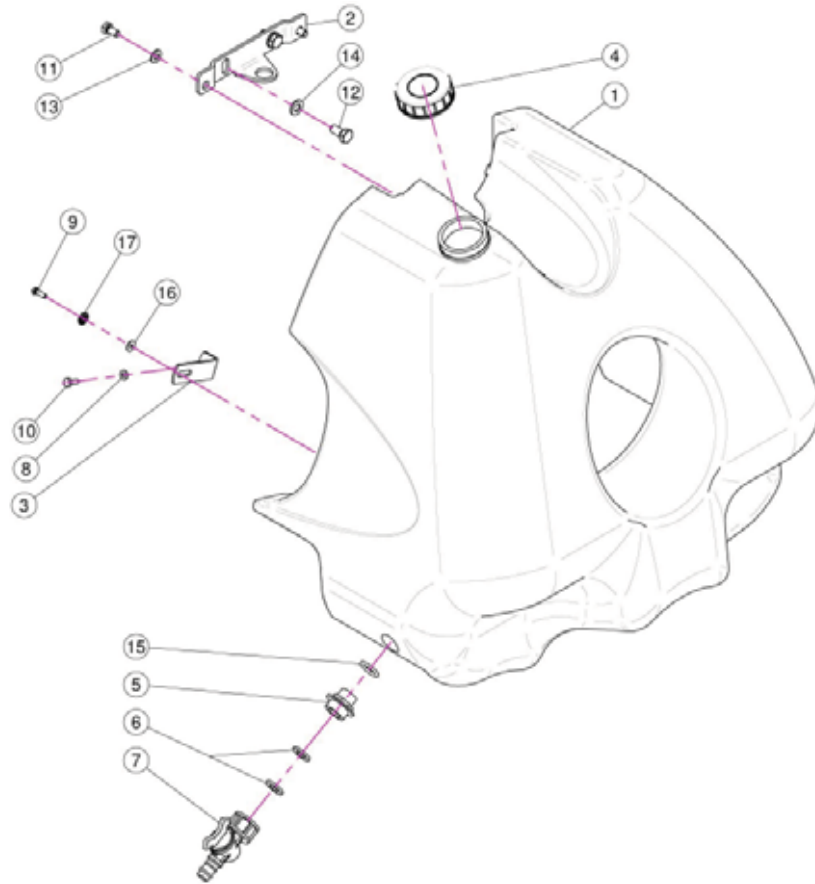
2.3 TANK FITTINGS & COVERS

<u>REF.</u>	<u>QTY.</u>	<u>PART NO.</u>	<u>DESCRIPTION</u>
1	1	02.405.000	Hinged Tank Lid
2	1	02.477.000	Threaded Ring D.255
3	1	02.405.000.L	Gasket
4	1	02.477.000.A	Threaded Ring Gasket D.255
5	2	02.457.000	Hosetail D.13 90° M. 1/2"
6	4	OR.004.081	20.22 x 3.53 O-Ring Gasket
7	4	02.458.000	Lock Ring 1/2"
8	4	FC.016.5.018	Hose Clamp 16.5 - 18
9	2	02.482.000	Hosetail Male Threaded 1/2"
10	2	FG.018.000	Sticker
11	2	RP.006.000	Washer D.6
12	2	TE.006.016T	Screw TE M6 x 16
13	1	20.498.002	Stainless Steel Anti-Vortex
14	1	20.436.000	Special Garnishing For Anti-Whirl
15	1	RP.010.030	Washer D.10 x 30 mm
16	As Req'd	02.378.000	Hose D.12 x 16 L=1600 (Per Foot)
17	1	OR.000.507	27 x 5 O-Ring Gasket
18	1	00.045.012	1" 1/4 M - 1" M Reducer Nipple
19	2	02.478.000	Red Floating Ball D.8.5
20	As Req'd	02.378.000	Hose D.12 x 16 L=850 (Per Foot)
21	16	TAS.04.2.025I	Self Threaded Screw 4.2 x 25
22	1	DOT.10.5587	M10 Brass Nut
23	1	00.345.000	Nipple 1" 1/4 + 1" 1/4 GAS
24	1	02.033.000	Gasket
25	1	00.543.000	Nut 1" 1/4 GAS
26	1	00.055.134.L	Cutted Long Nipple 1"/1" GAS
27	1	02.066.000	Gasket D.33 x 45
28	1	00.542.000	Nut 1"
29	1	OR.004.118	29.75 x 3.53 O-Ring Gasket

02.405.000 MAIN HATCH

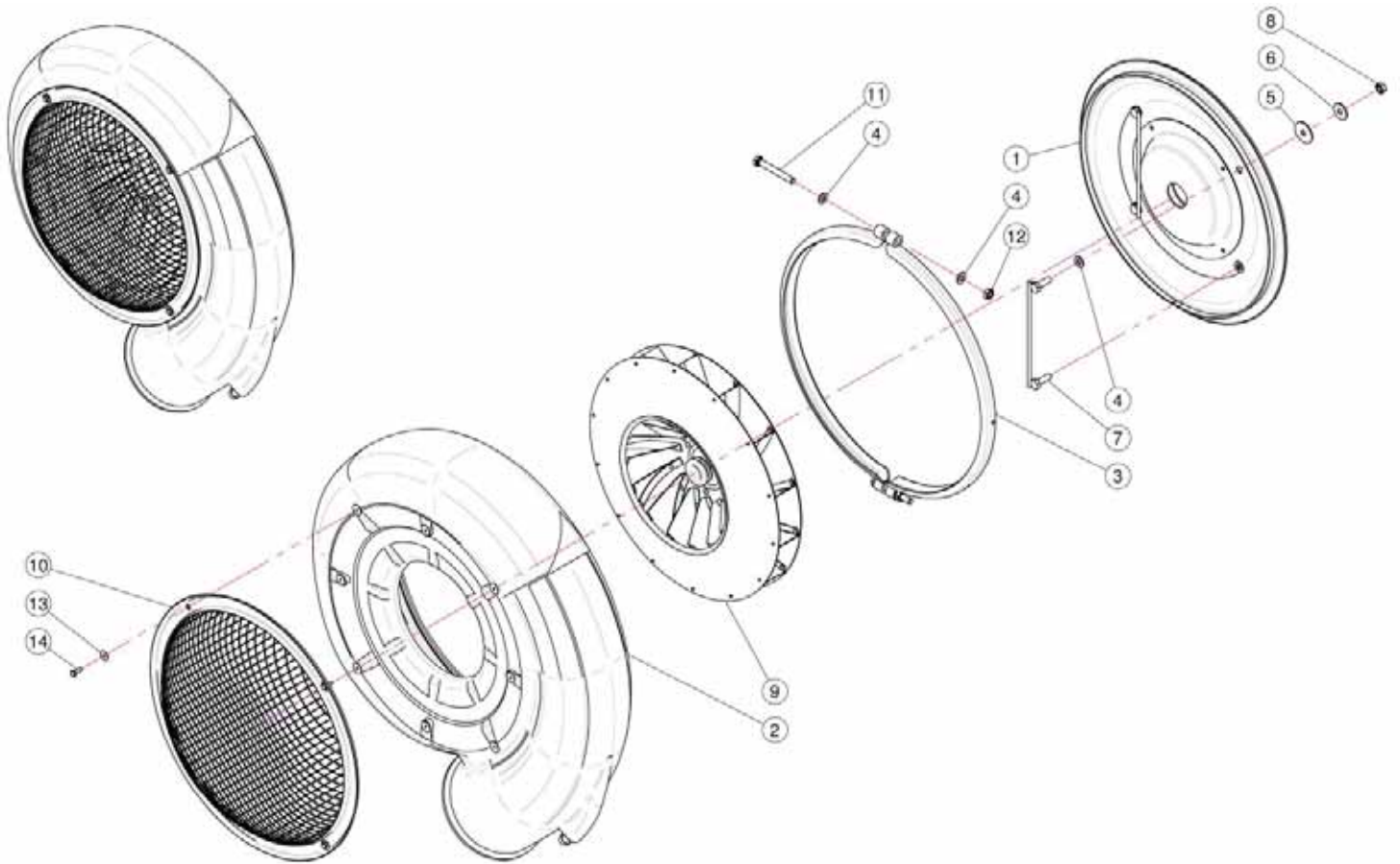
1	1	02.405.000.B	Base Ring
2	1	02.405.001	Arm
3	1	02.405.000.A	Gripping Plate
4	1	02.405.002	Shaped Gasket
9	1	OR.000.512	51 x 3.5 O-Ring Gasket
10	1	20.787.000.D	Pin

2.4 HAND WASH TANK



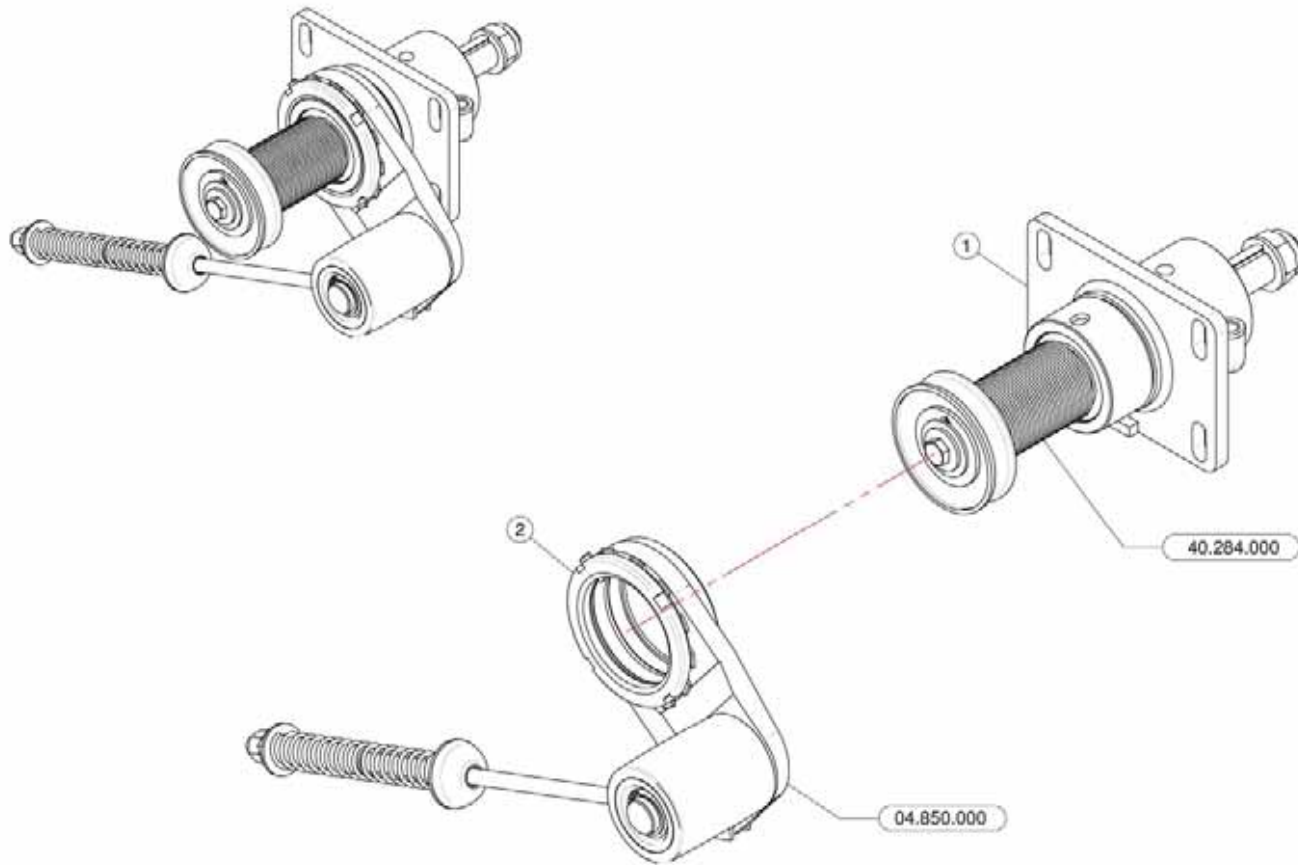
<u>REF.</u>	<u>QTY.</u>	<u>PART NO.</u>	<u>DESCRIPTION</u>
1	1	40.322.000	Hand Washing Tank
2	1	40.323.000	Fixing Bracket
3	2	40.324.000	Bracket For Handwashing Tank 45 Series
4	1	02.460.000	Female Threaded Tank Lid
5	1	00.055.044	Nipple 1/2" - 3/4" GAS
6	2	02.030.010	Gasket
7	1	02.497.000	3/4" Female Valve
8	2	RP.006.000	Washer D.6
9	2	TE.005.016I	Screw TE M5 x 16
10	2	TE.006.016T	Screw TE M6 x 16
11	2	TE.008.016T	Screw TE M8 x 16
12	2	TE.010.020T	Screw TE M10 x 20
13	2	RP.008.000	Washer D.8
14	2	RP.010.000	Washer D.10
15	1	OR.004.081	20.22 x 3.53 O-Ring Gasket
16	2	RP.005.015I	Washer D.5 x 15
17	2	RD.006.000	Tab Washer D.6

2.5 FAN ASSEMBLY



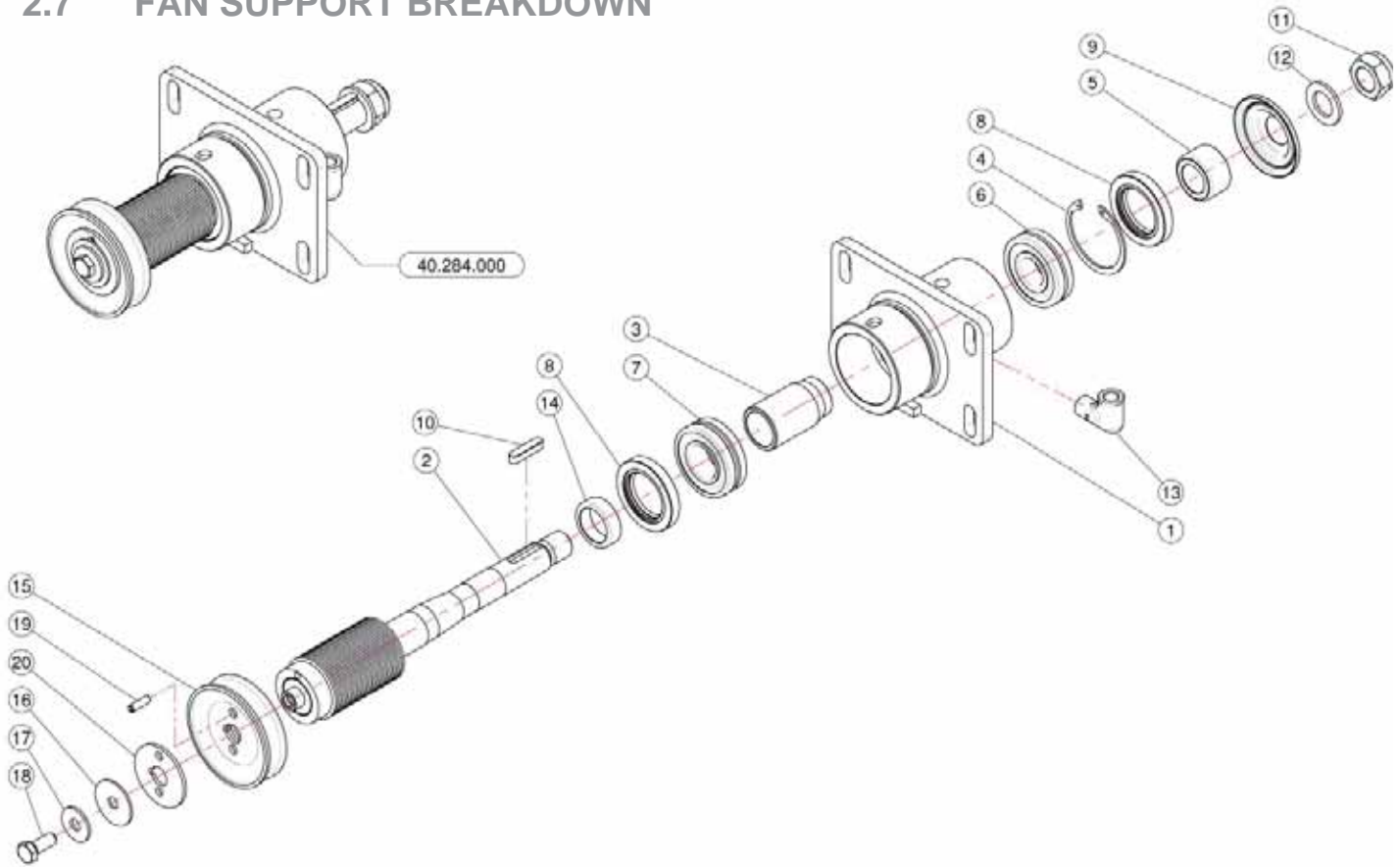
<u>REF.</u>	<u>QTY.</u>	<u>PART NO.</u>	<u>DESCRIPTION</u>
1	1	40.268.000	Fan 45 Cover
2	1	04.854.000	Fan Housing P/T45N
3	1	04.874.000.Z	D.485 Clamp
4	8	RP.010.000	Washer D.10
5	4	RP.010.040	Washer D.10 x 40
6	4	RP.010.030	Washer D.10 x 30 mm
7	2	20.088.000	Back Cover Bracket
8	4	D0.10.5587G	Nut M10
9	1	04.720.000	Fan 450
10	1	05.654.200	Fan Net Protection
11	2	TE.010.080T	Bolt M10 x 80
12	2	DOT.10.5587	M10 Brass Nut
13	4	RP.006.018	Washer D.6 x 18
14	4	TE.006.016T	Screw TE M6 x 16

2.6 FAN SUPPORT



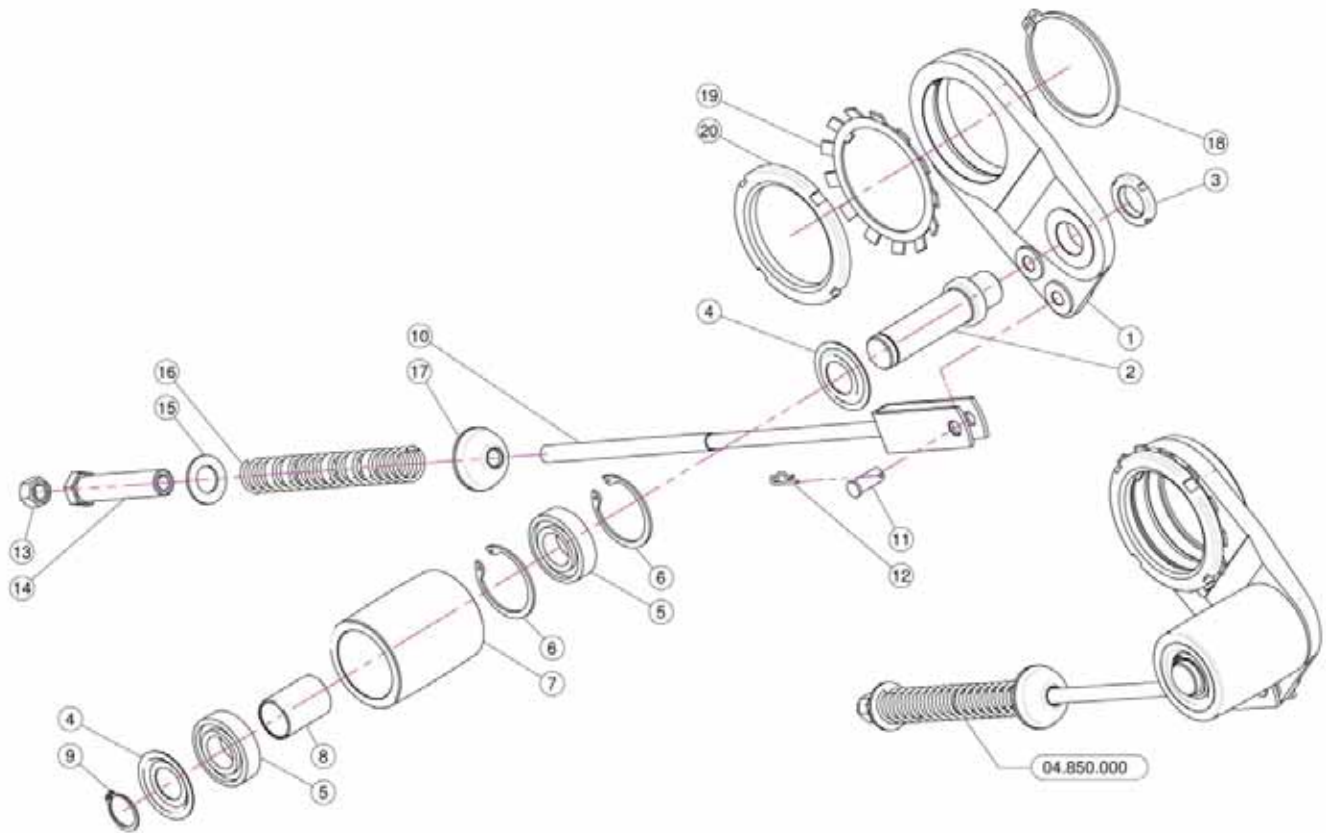
<u>REF.</u>	<u>QTY.</u>	<u>PART NO.</u>	<u>DESCRIPTION</u>
1	1	40.284.000	Fan Support Pul D.54 No Disengagement
2	1	04.850.000	Automatic Belt Stretcher

2.7 FAN SUPPORT BREAKDOWN



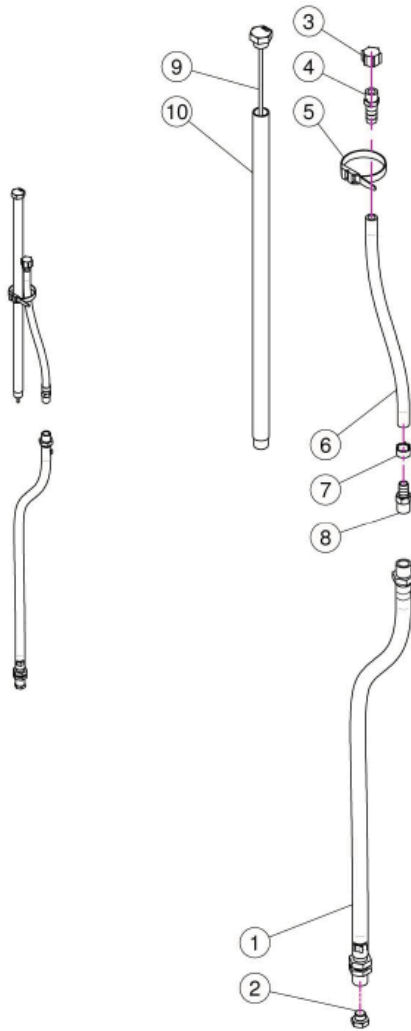
<u>REF.</u>	<u>QTY.</u>	<u>PART NO.</u>	<u>DESCRIPTION</u>
1	1	40.260.000	Fan Support
2	1	40.271.054	Shaft With Pulley D.54 J32
3	1	40.262.000	Spacer Fan Support
4	1	I0.062.000	Internal D.62 Circlip
5	1	40.263.000	Side Fan Seal Spacer
6	1	K0.021.305	Bearing To Oblique Seams 21.305
7	1	K0.022.206	Bearing To Oblique Seams 22.206
8	2	BASL.40.62.10	Viton Lip Seals IEL 40.62.10
9	1	40.267.000	Side Fan Cover
10	1	L.08.07.35	8 x 7 x 35 Tang
11	1	DA.022.0BF	Self-Locking Nut M22 x 1.5
12	1	RP.022.000	Washer D.22
13	1	20.789.000	Male/Female 90° Elbow
14	1	40.264.000	Spacer
15	1	02.723.003	Pulley For Pump D.78 x 1 3V
16	1	RP.010.040	Washer D.10 x 40
17	1	RP.010.030	Washer D.10 x 30 mm
18	1	TE.010.025FT	Bolt TE M10 x 25
19	1	SE.006.020	Spring Pin D.6 x 20
20	1	02.723.001	Special Washer mm3

2.8 BELT TENSION ROLLER



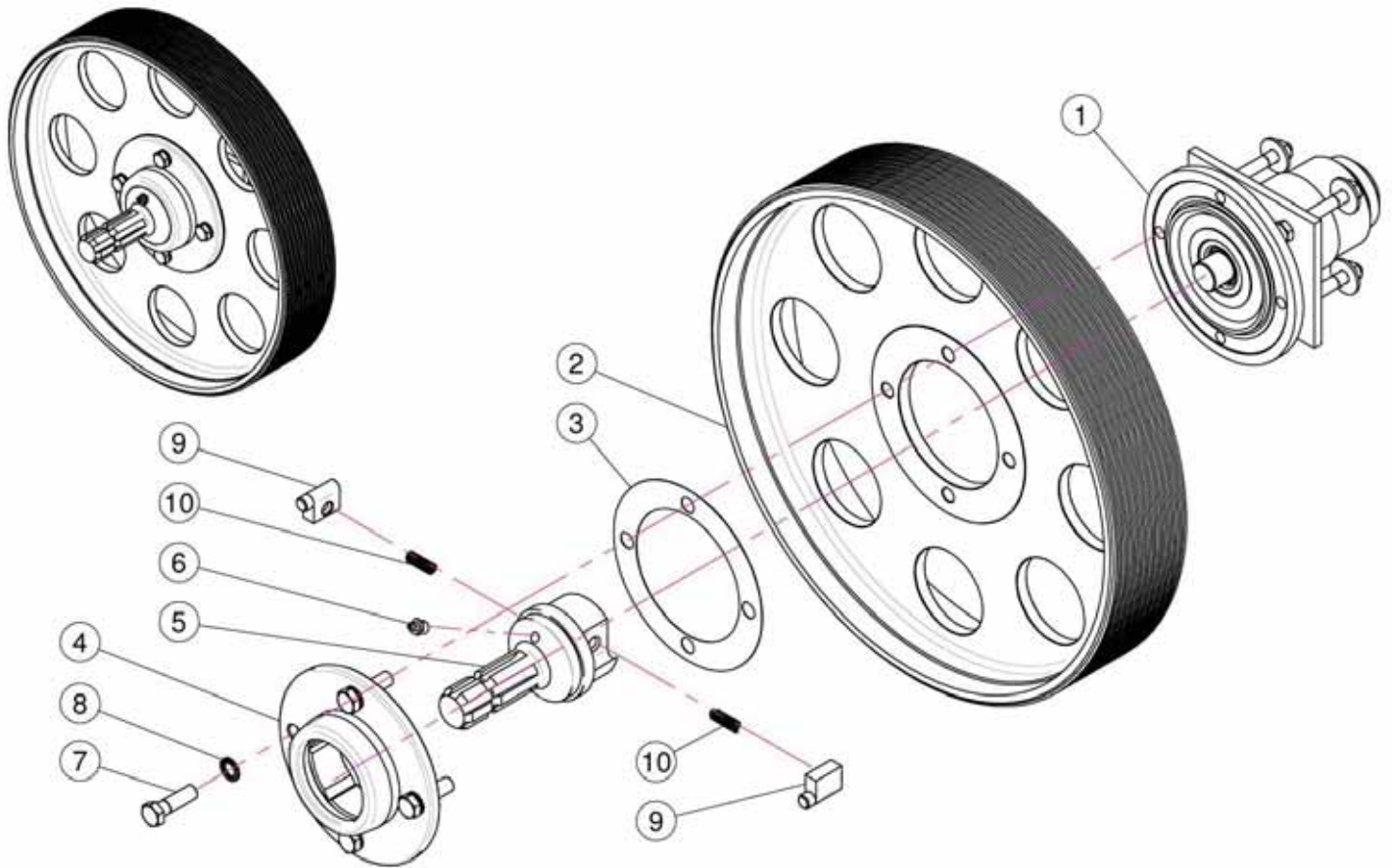
REF.	QTY.	PART NO.	DESCRIPTION
1	1	04.095.000	Belt Stretcher Housing
2	1	04.835.000	Belt Stretcher Pin
3	1	KM.005.000	Nut KM5
4	2	04.585.000	Anti-Dust Cover
5	2	K6.205.2RS	Roller Bearing 6205-2RS
6	2	I0.052.000	Internal D.52 Circlip
7	1	04.083.000	Roller For Belt Stretcher
8	1	04.084.000	Spacer For Belt Stretcher
9	1	E0.025.000	External D.25 Circlip
10	1	05.653.100	Belt Stretcher Fork
11	1	04.593.000	Pin
12	1	00.100.002	Clip
13	1	D0.12.5587G	M12 Nut
14	1	04.583.000	Special Screw
15	1	RP.019.000	Washer D.19
16	1	04.093.100	Spring
17	1	20.260.000	Special Washer D.12
18	1	E0.080.000	External D 80 Circlip
19	1	MB.016.000	Tooth Lock Washer MB 16
20	1	04.099.000	Nut M 80 x 2

2.9 LUBRICATION TUBING



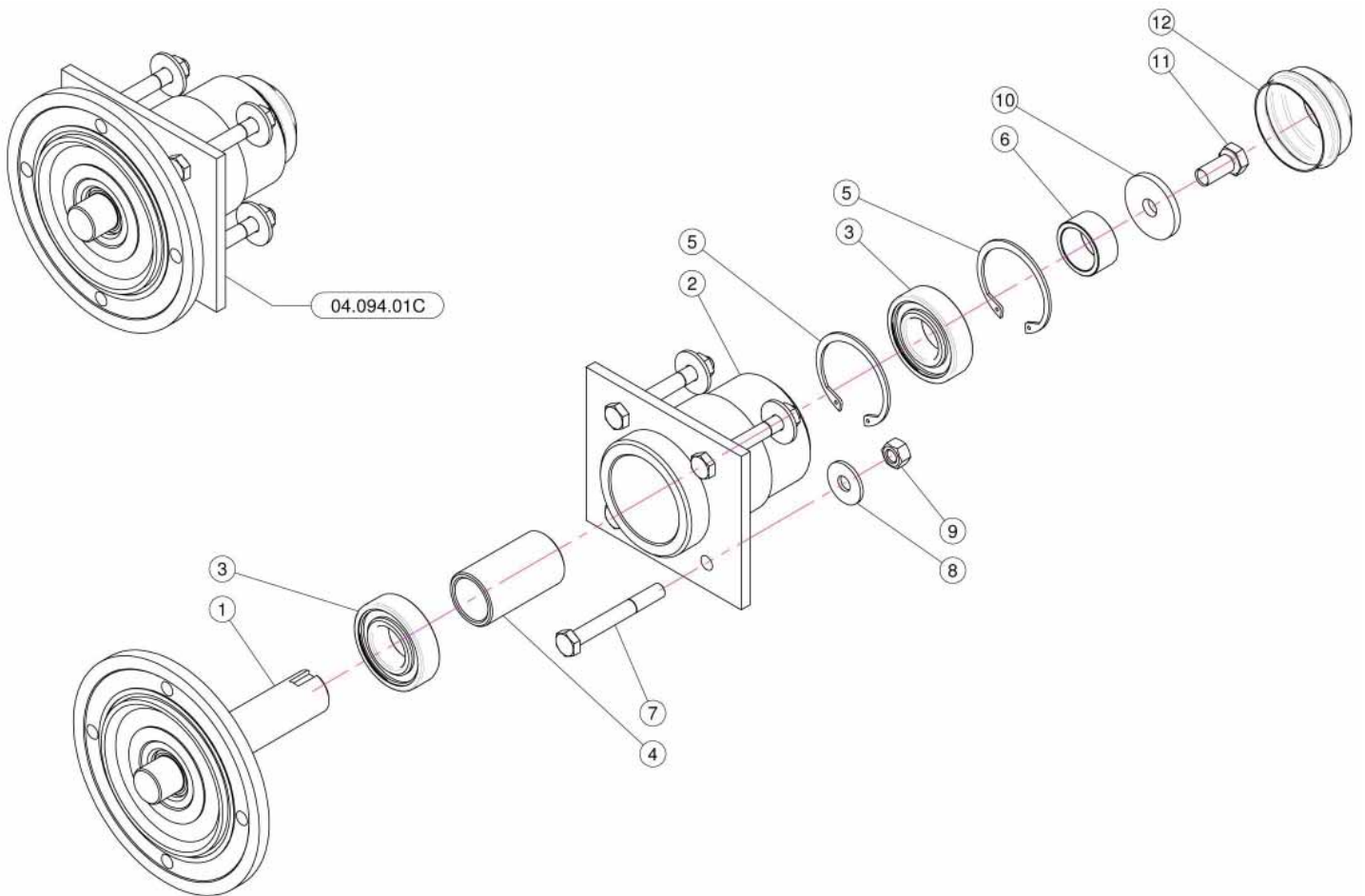
<u>REF.</u>	<u>QTY.</u>	<u>PART NO.</u>	<u>DESCRIPTION</u>
1	1	20.790.000	Drain Pipe 3/8"
2	1	40.266.000	Oil Exhaust Plug
3	1	02.013.000	Plug G1/4"
4	1	00.414.100	Straight Hose D.11 1/4" With Bleed
5	1	02.355.000	Nylon Assembly Clamp
6	As Req'd	02.217.000	Hose D.8 x 13 L=250 (Per Foot)
7	1	FC.014.5.016	Hose Clamp
8	1	20.792.000	Straight Hose D.11 G 1/4" For Breather
9	1	40.269.000	Filling Plug With Dipstick L=215
10	1	40.272.000	Filling Pipe L=201

2.10 MAIN PULLEY & OVERRUNNING CLUTCH



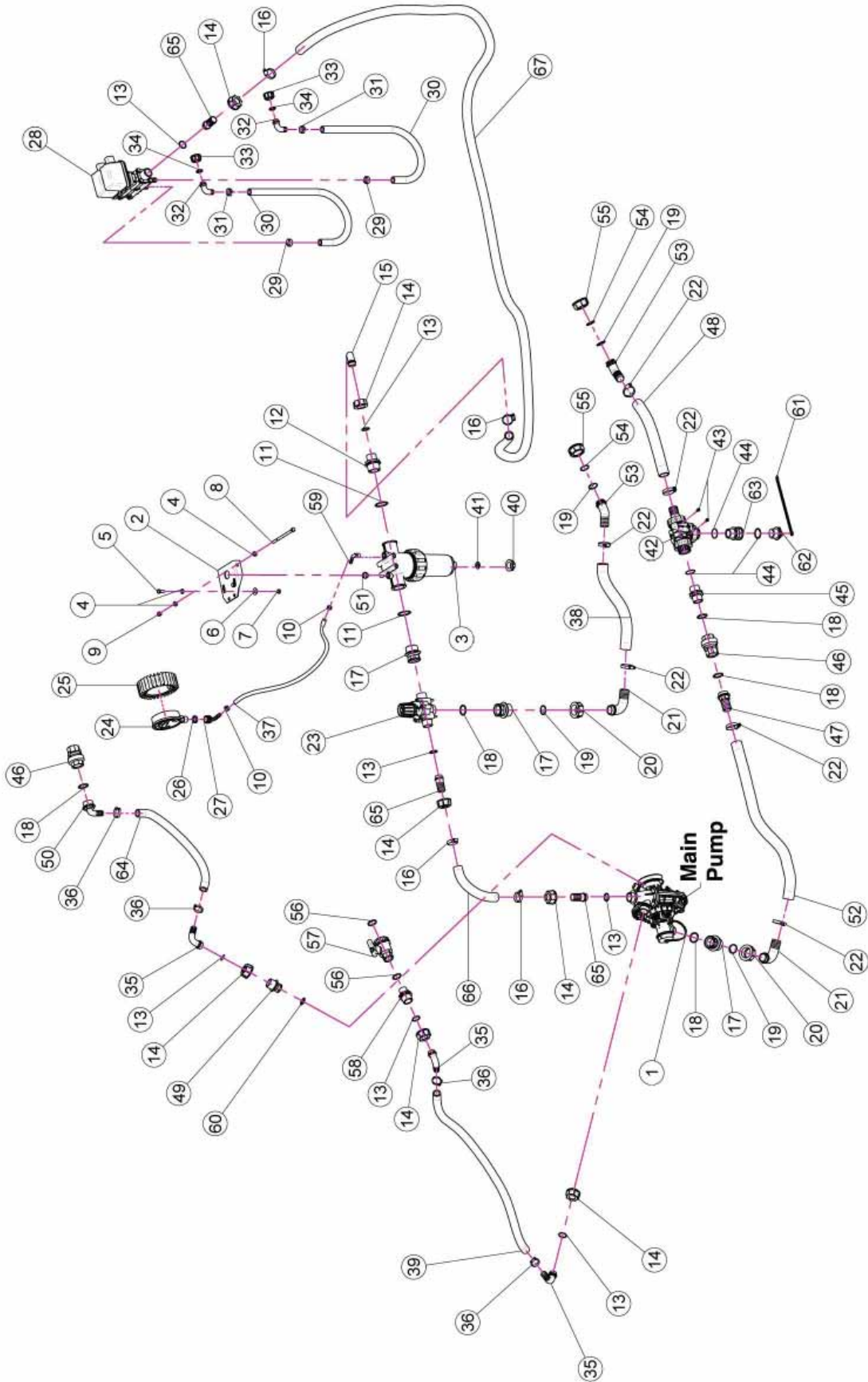
<u>REF.</u>	<u>QTY.</u>	<u>PART NO.</u>	<u>DESCRIPTION</u>
1	1	04.094.01C	Clutch
2	1	00.450.J32	Pulley
3	1	04.719.000	Gasket
4	1	04.066.000	Body
5	1	03.701.000	Rotor
6	1	ID.010.001	Grease Nipple
7	4	TE.012.040F	Bolt M12 x 40
8	4	RD.012.000	Tab Washer D.12
9	2	02.502.002	Pin
10	2	02.502.001	Spring

2.11 FAN SUPPORT HUB ASSEMBLY



REF.	QTY.	PART NO.	DESCRIPTION
1	1	04.085.000	Shaft
2	1	04.094.000	Clutch
3	2	K6.206.2RS	Bearing
4	1	04.060.000	Spacer
5	2	I0.062.000	Internal D.62 Circlip
6	1	04.590.000	Spacer
7	4	TE.010.080	Screw TE M10 x 80
8	4	RP.010.030	Washer D.10 x 30 mm
9	4	D0.10.5587G	Nut M10
10	1	20.810.000	Special Washer For Lower Support
11	1	TE.012.025FT	Bolt TE M12 x 1.25
12	1	04.062.001	Cover

2.12 LIQUID FLOW PATH



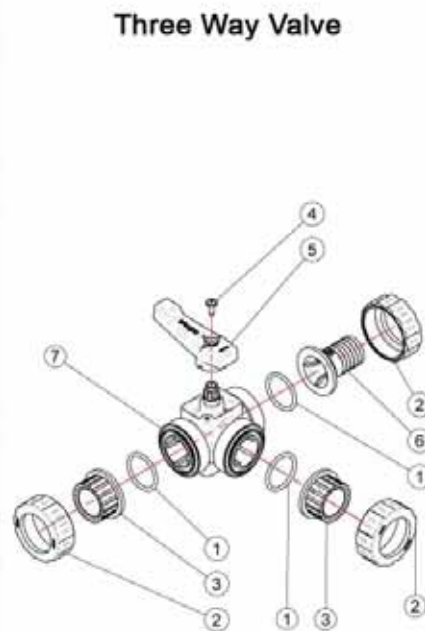
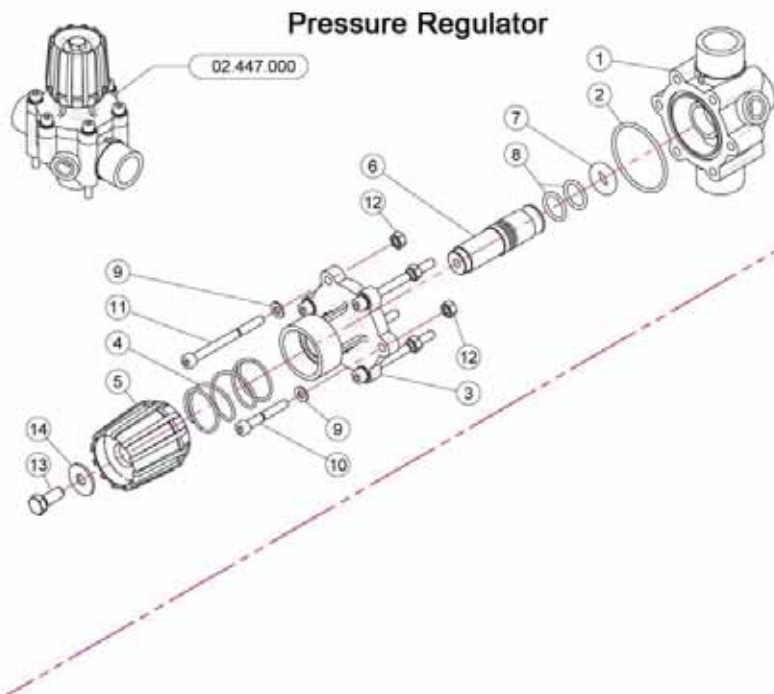
2.12 LIQUID FLOW PATH

<u>REF.</u>	<u>QTY.</u>	<u>PART NO.</u>	<u>DESCRIPTION</u>
1	1	02.157.050	Pump
2	1	20.519.100	Bracket
3	1	02.450.110	Line Filter 1" 1/4 Female
4	4	RP.008.000	Washer D.8
5	2	TE.008.025T	Screw TE M8 x 25
6	2	RP.008.024	Washer D.8 x 24
7	2	D0.08.5588G	M8 6S Big Lead Nut 5588
8	1	TE.008.130	Screw M8 x 130
9	1	DA.008.0AG	Self Locking Nut M8
10	2	FC.013.5.015	Hose Clamp
11	2	OR.000.144	O-Ring D.39.69 x 3.53
12	1	00.045.012	1" 1/4 M - 1" M Reducer Nipple
13	7	OR.000.132	23.81 x 2.62 O-Ring Gasket
14	7	00.055.24.2	1" Fly Nut
15	1	00.055.037	D.25 Hosetail
16	4	F0.023.035I	Stainless Steel Clip
17	3	02.374.000	M./F. 1" F/1" 1/4 M Reduction
18	6	OR.004.118	29.75 x 3.53 O-Ring Gasket
19	4	OR.003.112	O-Ring D.28.24 x 2.62
20	2	00.058.006	1" 1/4 Fly Nut
21	2	00.058.004	D.30 Hosetail
22	6	F0.025.040I	Stainless Steel Clip
23	1	02.447.000	3 Way Valve
24	1	02.445.000	Pressure Gauge Ø100 INOX 0-6 Bar
25	1	02.470.000	Pressure Gauge Guard
26	1	24.072.000	Brass Fly Nut 1/2"
27	1	21.012.000	D.12 Hosetail
28	1	02.390.08C	Electro Valves
29	2	FC.021.5.023	Hose Clamp 21.5 - 23
30	As Req'd	02.211.000	Hose D.16 L=1100 (Per Foot)
31	2	FC.023.5.025	Hose Clamp 23.5 - 25
32	2	00.055.046	Curved Union With R.H. D.17
33	2	00.055.045	3/4" Fly Nut
34	2	02.349.000	17 x 23 x 3 Flat Gasket
35	3	00.055.038	Curved Union With R.H. D.19
36	4	FC.027.5.029	Hose Clamp 27.08 - W8
37	As Req'd	02.217.000	Hose D.8 x 13 L=400 (Per Foot)
38	As Req'd	02.238.000	Hose D.30 x 41 L=550 (Per Foot)
39	As Req'd	02.212.000	Hose D.19 x 28 L=1000 (Per Foot)
40	1	02.182.000	Female 3/4" Cap
41	1	02.030.010	Gasket
42	1	21.058.300	Three Ways Valve

2.12 LIQUID FLOW PATH

<u>REF.</u>	<u>QTY.</u>	<u>PART NO.</u>	<u>DESCRIPTION</u>
43	2	TA.006.012P	Screw M6 x 12
44	2	OR.002.125	31.47 x 1.78 O-Ring Gasket
45	1	00.055.034	Nipple 1" / 1" GAS
46	2	21.149.000	Valve 1" F-F.
47	1	00.422.100	Male Connector RH 30 1" GAS
48	As Req'd	02.238.000	Hose D.30 38 L=1200 (Per Foot)
49	1	21.186.000	Reducer Nipple 1" M - 1/2" F
50	1	21.193.000	Hosetail 90° 1" R.H.
51	1	TM.014.000	Male Plug 1/4"
52	As Req'd	02.238.000	Hose D.30 x 38 L=500 (Per Foot)
53	2	02.339.000	45° Hosetail
54	2	OR.003.106	O-Ring D.26.65 x 2.62
55	2	00.493.000	1" 1/4 Fly Nut
56	2	OR.000.134	O-Ring D.25.8 x 3.53
57	1	02.395.000	Valve 3/4" GAS F.F. Ball
58	1	02.293.000	1" M - 3/4" M Reducer Nipple
59	1	21.084.000	Hosetail 90° WES 8/R1/4
60	1	OR.004.081	20.22 x 3.53 O-Ring Gasket
61	1	21.183.000	Cap Stop
62	1	21.182.000	Packing 1" M
63	1	02.384.000	1" M - 1" F Reducer Nipple
64	As Req'd	02.212.000	Hose D.19 L=1000 (Per Foot)
65	3	00.055.021	Straight Hose R.H. D.25
66	As Req'd	20.809.000	Hose D.25 x 32 L=260 (Per Foot)
67	As Req'd	20.770.000	Hose D.25 x 32 L=2870 (Per Foot)

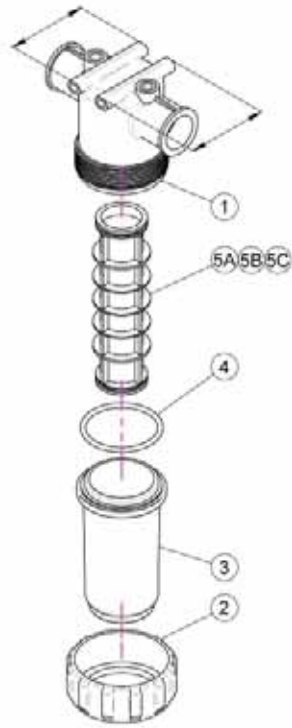
2.13 PRESSURE REGULATOR & 3 WAY VALVE



PRESSURE REGULATOR

<u>REF.</u>	<u>QTY.</u>	<u>PART NO.</u>	<u>DESCRIPTION</u>
1	1	02.447.001	Body For Regulator Valve
2	1	OR.003.193	O-Ring Gasket 48.89 x 2.62
3	1	02.447.009	Upper Flange
4	1	02.447.011	Spring
5	1	02.447.010	Regulation Valve Knob
6	1	02.447.014	Valve Pin
7	1	02.447.005	Special O-Ring For Gate 2447
8	2	OR.003.068	O-Ring Gasket 17.12 x 2.62
9	6	RP.006.000	Washer D.6
10	2	TCE.006.040	Bolt TCE M6 x 40
11	4	TCE.006.070	Bolt TCE M6 x 70
12	6	D0.06.5588G	Nut M6
13	1	TE.008.025I	INOX 8 x 25 Screw
14	1	RP.008.024I	INOX Washer D.8 x 24
3-WAY VALVE			
1	3	OR.004.137	O-Ring D.34.52 x 3.53
2	3	21.058.007	Valve Union Nut
3	2	21.058.006	Valve End Connector
4	1	TA.05.5.016	Self Threaded Screw M5.5 x 16
5	1	21.058.003	Valve Handle
6	1	21.058.009	Rubber Holder D.30
7	1	21.058.110	Body of Three Way Valve

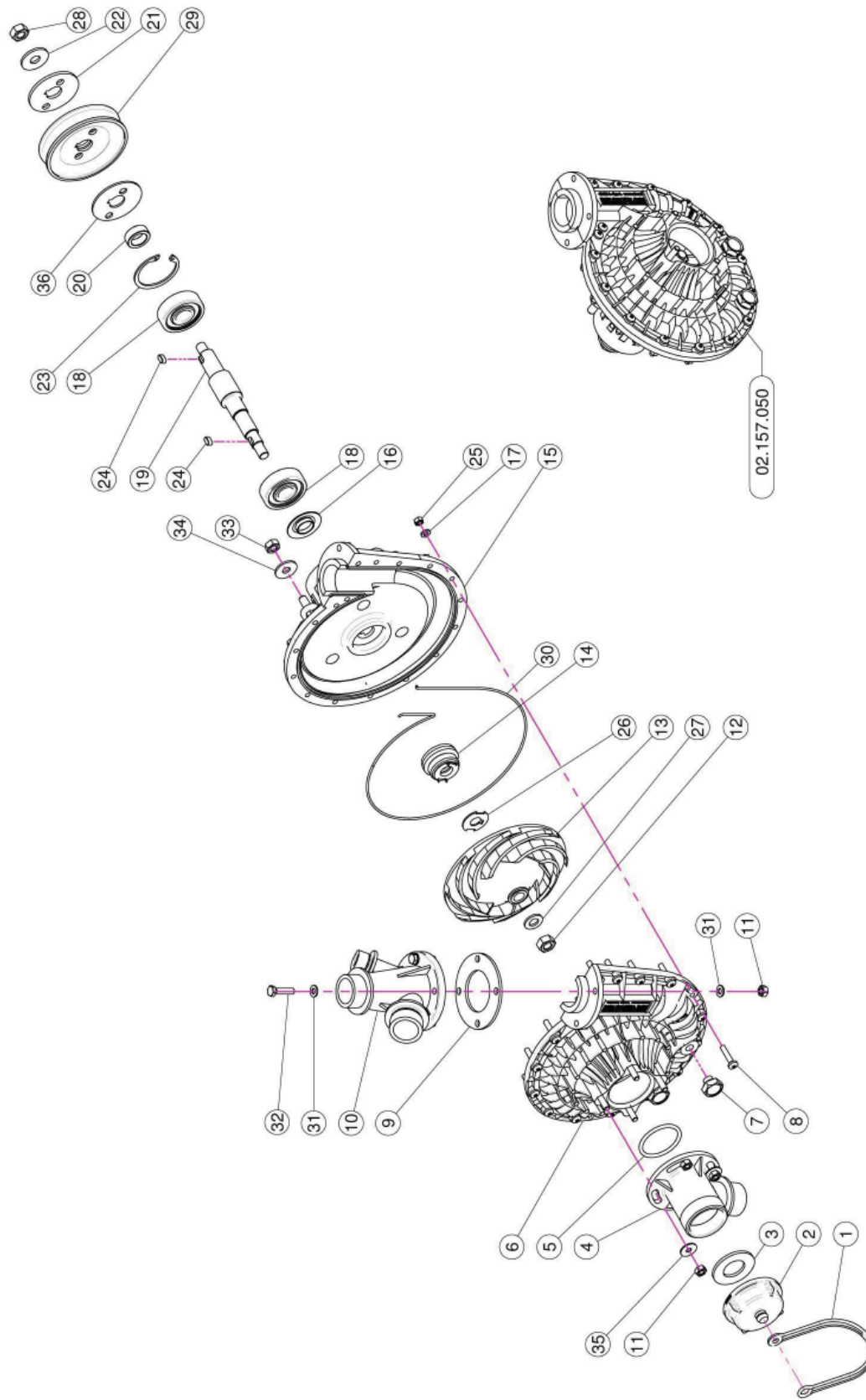
2.14 SUCTION FILTER ASSEMBLY



02.450.010

<u>REF.</u>	<u>QTY.</u>	<u>PART NO.</u>	<u>DESCRIPTION</u>
1	1	02.450.001	Line Filter Body
2	1	02.450.003	Ring Nut Filter In Line
3	1	02.450.011	Lid Filter With Unloading
4	1	OR.000.178	O-Ring D.74.63 x 5.33
5A	1	02.450.004C	Cartridge w/ O-Ring 50 Mesh (Blue)
5B	1	02.450.204C	Cartridge w/ O-Ring 80 Mesh (Grey)
5C	1	02.450.104C	Cartridge w/ O-Ring 32 Mesh (White)

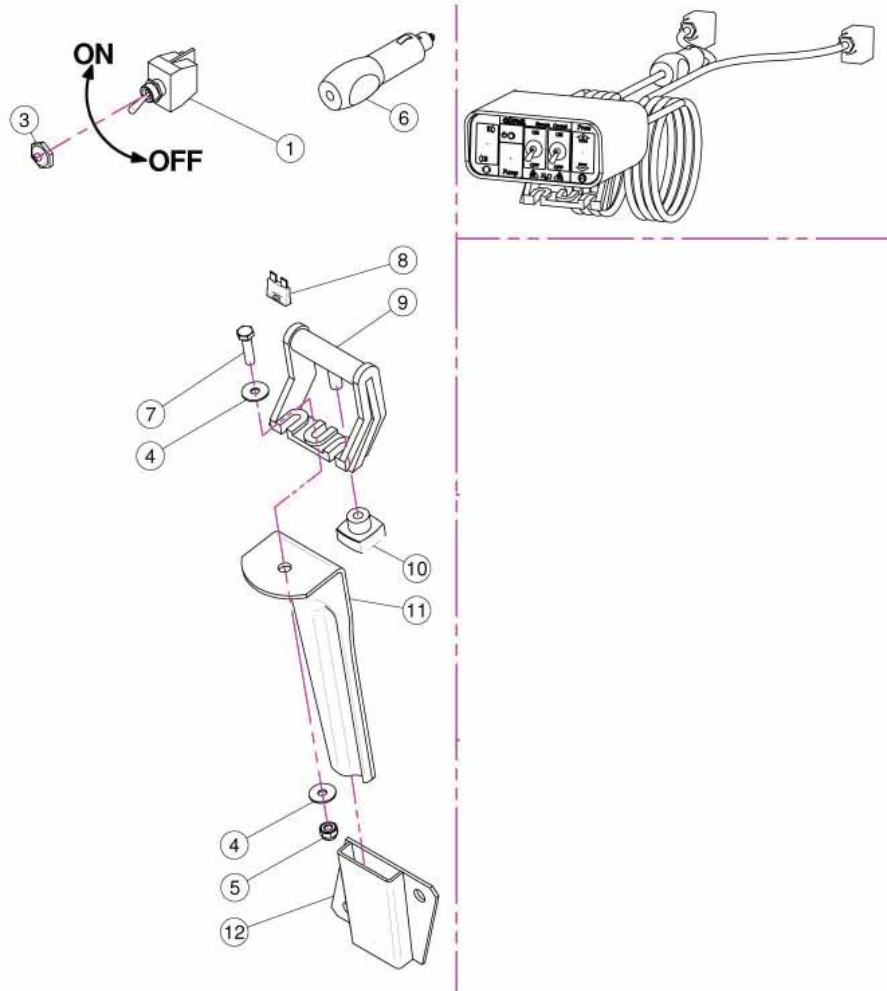
2.15 MAIN PUMP BREAKDOWN



2.15 MAIN PUMP BREAKDOWN

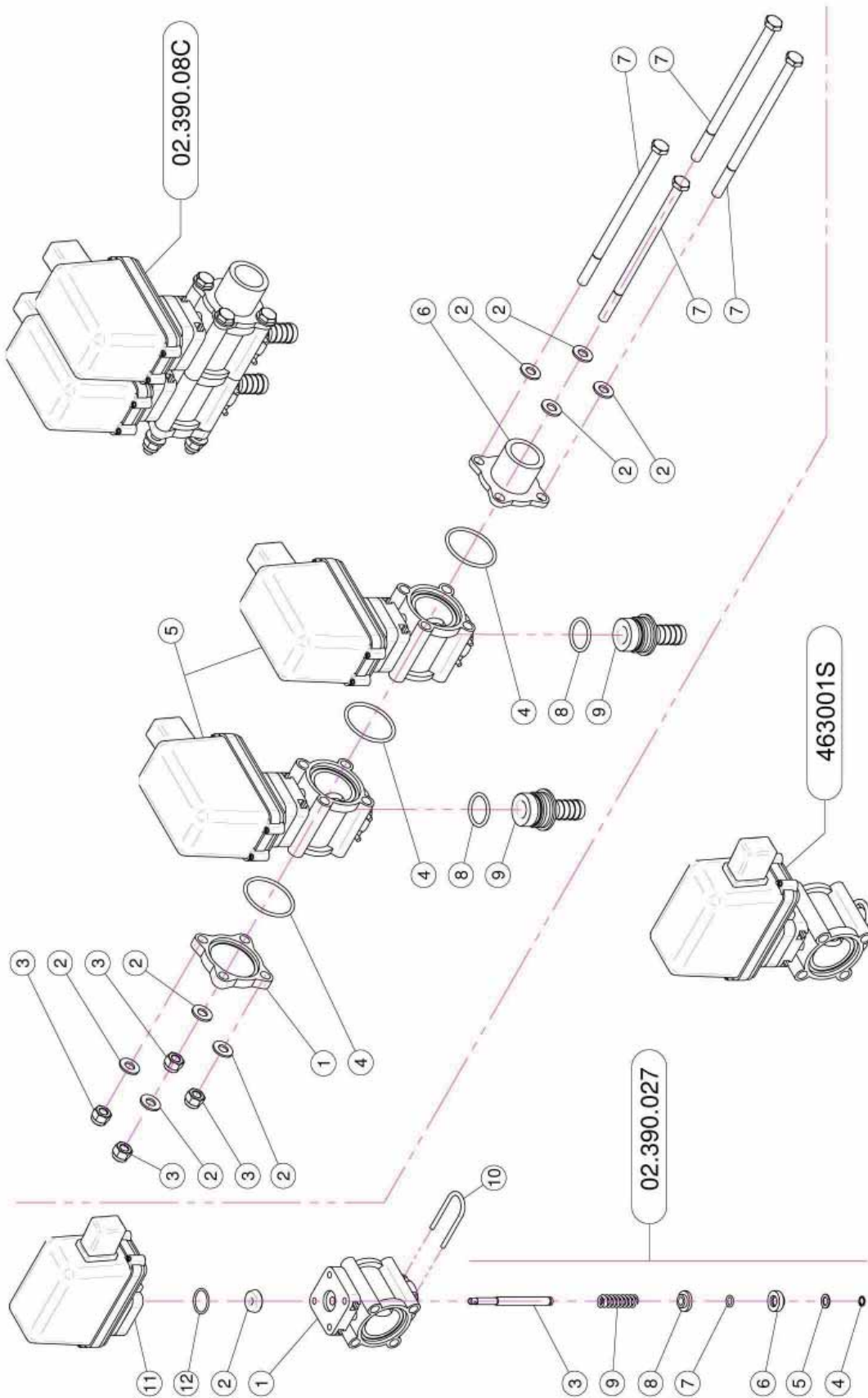
<u>REF.</u>	<u>QTY.</u>	<u>PART NO.</u>	<u>DESCRIPTION</u>
1	1	21.183.000	Cap Stop
2	1	02.120.000	Rapid Thread Cap
3	1	02.130.000	24 x 46 x 3 Rubber Gasket
4	1	02.116.000	Suction Fitting
5	1	OR.000.144	O-Ring D.39.69 x 3.53
6	1	02.152.010	Housing
7	2	TM.010.015	M10 x 1.5 Cap
8	17	TC.05.25.85	Cross Slotted Screw M5 x 25
9	1	02.179.000	Rubber Gasket
10	1	02.113.000	Delivery Fitting
11	8	DOT.06.5587	M6 Brass Nut 5587
12	1	DOT.10.5587	M10 Brass Nut
13	1	02.153.000	CD32 Pump Impeller
14	1	00.085.024CS	Mechanical Seal
15	1	02.151.010	Pump Casing
16	1	20.406.000	Special Cover For Pump
17	17	RP.005.000	Washer D.5
18	2	K6.303.2RS	Roller Bearing
19	1	02.155.010	CD32 Pump Shaft
20	1	02.722.000	Bush
21	1	02.723.001	Special Washer 3 mm
22	1	RP.010.030	Washer D.10 x 30 mm
23	1	I0.047.000	Internal D.47 Circlip
24	2	L.05.05.10	5 x 5 x 10 Tang
25	17	DOT.05.5587	M5 Brass Nut (5587)
26	1	02.114.000	INOX Special Washer
27	1	RP.010.00I	Washer D.10 INOX
28	1	D0.10.5588G	M10 6S Big Lead Nut 5588
29	1	02.723.002	Pulley For Pump D.88 x 1 3 V
30	1	OR.C02.070	OR Cord D.2 L=700
31	8	RP.006.000	Washer D.6
32	4	TE.006.025T	Screw TE M6 x 25
33	3	D0.08.5588G	M8 6S Big Lead Nut 5588
34	3	RP.008.024	Washer D.8 x 24
35	3	RP.006.018	Washer D.6 x 18
36	1	02.723.005	Special Washer 2 mm

2.16 CONTROL BOX 910208/T



<u>REF.</u>	<u>QTY.</u>	<u>PART NO.</u>	<u>DESCRIPTION</u>
1	2	21.030.005	Switch 2V 2P On-Off 10A
3	2	21.030.007	Switch Cap D.12
4	2	RP.006.018	Washer D.6 x 18
5	1	DA.006.0AG	Self Locking Nut - High M6
6	1	21.030.008	12V Power Jack
7	1	TE.006.025T	Screw TE M6 x 25
8	1	21.030.004	10 Ah Fuse
9	1	21.030.002	Moving Fixing Bracket
10	1	21.030.003	Fixing Knob
11	1	20.111.000	Bracket
12	1	20.107.000	Female Bayonet Support

2.17 ELECTRO VALVES



2.17 ELECTRO VALVES

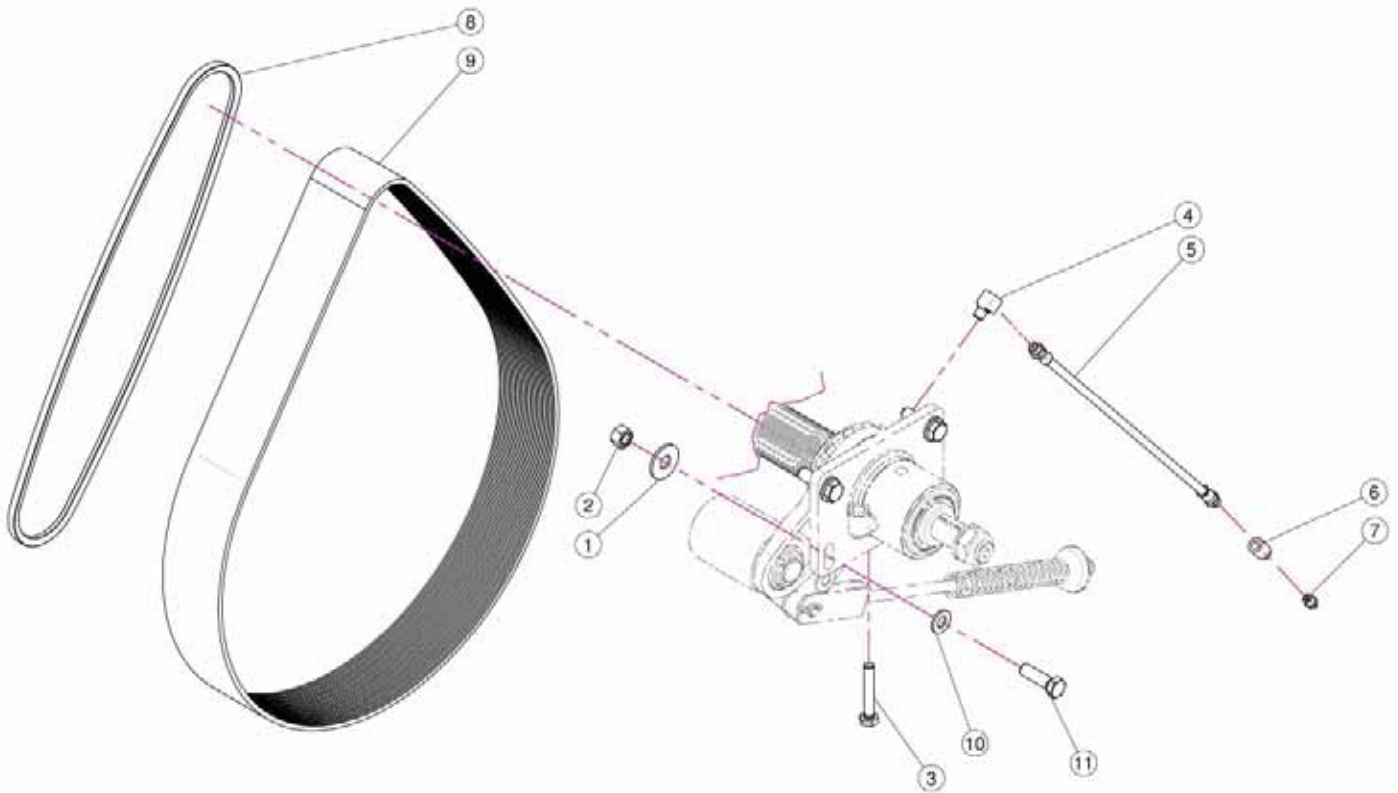
02.390.029

<u>REF.</u>	<u>QTY.</u>	<u>PART NO.</u>	<u>DESCRIPTION</u>
1	1	02.390.007	Valve Body
2	1	02.390.008	Gasket
3	1	02.390.020	Pin
4	1	02.390.013	Stop Ring
5	1	02.390.014	Washer 7.2 x 12 INOX
6	1	02.390.015	Lower Valve
7	1	02.390.016	O-Ring
8	1	02.390.009	Superior Valves
9	1	02.390.011	Spring
10	1	21.130.005	Fork
11	1	02.390.028	Solenoid Valve
12	1	OR.002.075	D.18.77 x 1.78 O-Ring

02.390.08C

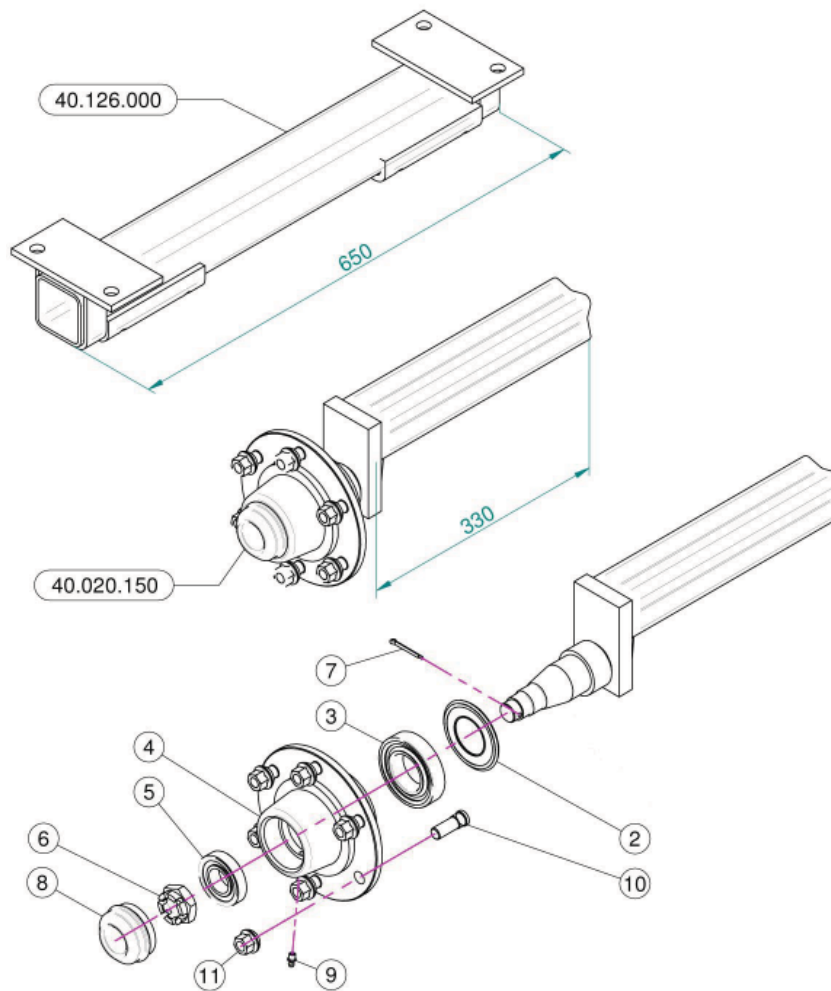
1	1	02.390.017	Valve Flange
2	8	RP.008.000	Washer D.8
3	4	DA.008.0AG	Self Locking Nut M8
4	3	OR.003.156	O-Ring Gasket 39.34 x 2.62
5	2	02.390.029	Solenoid Valve
6	1	02.390.018	Connector
7	4	TE.008.150	Screw TE M8 x 150
8	2	OR.000.130	22.22 x 2.62 O-Ring Gasket
9	2	02.406.000	Hosetail D.16

2.18 PUMP & FAN BELTS



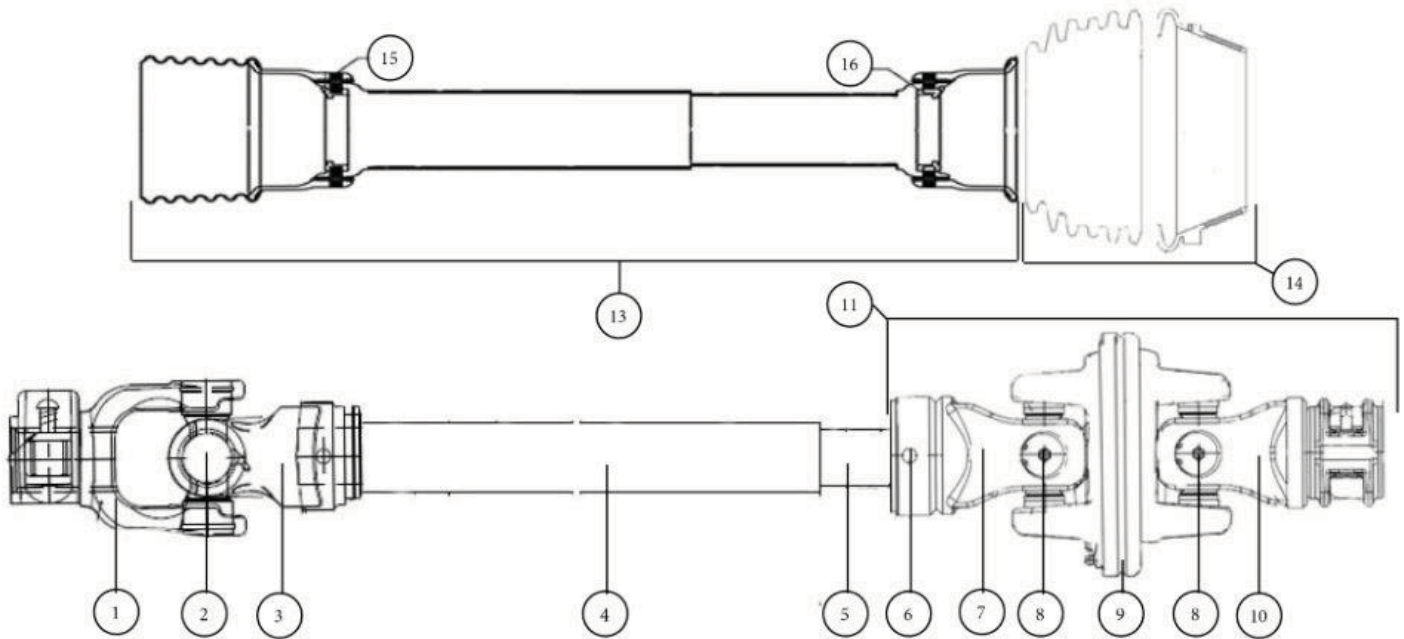
REF.	QTY.	PART NO.	DESCRIPTION
1	4	RP.012.036	Washer D12 x 36
2	4	D0.12.5587G	M12 Nut
3	1	TE.010.060T	Screw TE M10 x 60
4	1	02.736.000	90 G. M10 x 1 Fitting
5	1	02.738.040	Greaser Extension M10 x 1 L=400
6	1	02.737.000	Adaptor M10
7	1	ID.010.001	Grease Nipple
8	1	C0.500.03V	V-Belt
9	1	C0.650.J32	Poly V-Belt
10	4	RP.012.000	Washer D.12
11	4	TE.012.040T	Bolt TE M12 x 40

2.19 AXLE & WHEEL HUBS



<u>REF.</u>	<u>QTY.</u>	<u>PART NO.</u>	<u>DESCRIPTION</u>
2	1	20.258.000	Oil Cover
3	1	K0.030.209	Bearing
4	1	05.903.001	Six Holes Flange
5	1	K0.030.206	Bearing
6	1	DI.027.5594F	Six Castle Nut M27
7	1	20.259.000	Split Pin
8	1	04.062.001	Cover
9	1	ID.006.001	Greaser
10	6	05.911.001	Stud
11	6	05.911.000	Special Nut

2.20 DRIVESHAFT - WB4105



<u>REF.</u>	<u>PART NO.</u>	<u>DESCRIPTION</u>
1	A421138	Quick Release Yoke 1 3/8" x 6-Spline
2	A421	Universal Cross
3	A4243	Outer Tube Yoke
4	A433	Outer Drive Tube
5	A364	Inner Drive Tube
6	A1141	Poll Pin (2 Required)
7	AG46236	Inner C.V. Yoke
8	A2106	C.V. Universal Cross (2 Required)
9	AG238000	C.V. Center Disc Assembly
10	AG236138	C.V. End Yoke 1 3/8" x 6-Spline
11	AG4001	C.V. Joint Assembly 1 3/8" x 6-Spline
12	AB121	Quick Release Button
13	AS20090	Guard Center Assembly Includes Bearings
14	ASW3100	Guard Wide Angle Attachment
15	AS201	Release Lever Kit
16	ASB2	Bearing Kit

3 LIMITED WARRANTY



GEARMORE, INC., warrants each new Gearmore product to be free from defects in material and workmanship for a period of twelve (12) months from date of purchase to the original purchaser. This warranty shall not apply to implements or parts that have been subject to misuse, negligence, accident, or that have been altered in any way.

Our obligation shall be limited to repairing or replacement of any part, provided that such part is returned within thirty (30) days from date of failure to Gearmore through the dealer from whom the purchase was made, transportation charges prepaid.

This warranty shall not be interpreted to render us liable for injury or damages of any kind or nature, direct, consequential or contingent, to person or property. This warranty does not extend to loss of crops, loss because of delay in harvesting or any other expenses, for any other reasons.

Gearmore in no way warranties engines, tires, or other trade accessories, since these items are warranted separately by these respective manufacturers.

Gearmore reserves the right to make improvements in design or changes in specification at any time, without incurring any obligations to owners or units previously sold.

Please be advised that all warranty work done by your dealer must be approved by Gearmore before work begins.

GEARMORE, INC.
13477 Benson Ave.
Chino, CA 91710

Always refer to and heed machine operating warning decals on machine.

*To validate the warranty on this product, please log-in to our website - www.gearmore.com.
You will find "warranty registration" listed at the top of our homepage.*