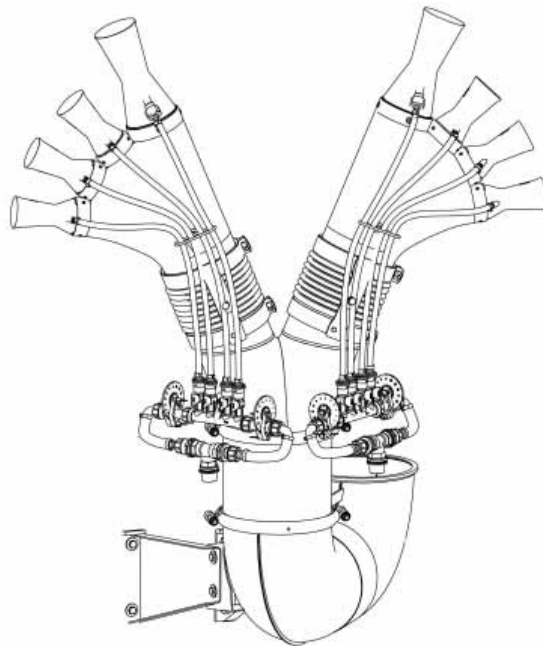




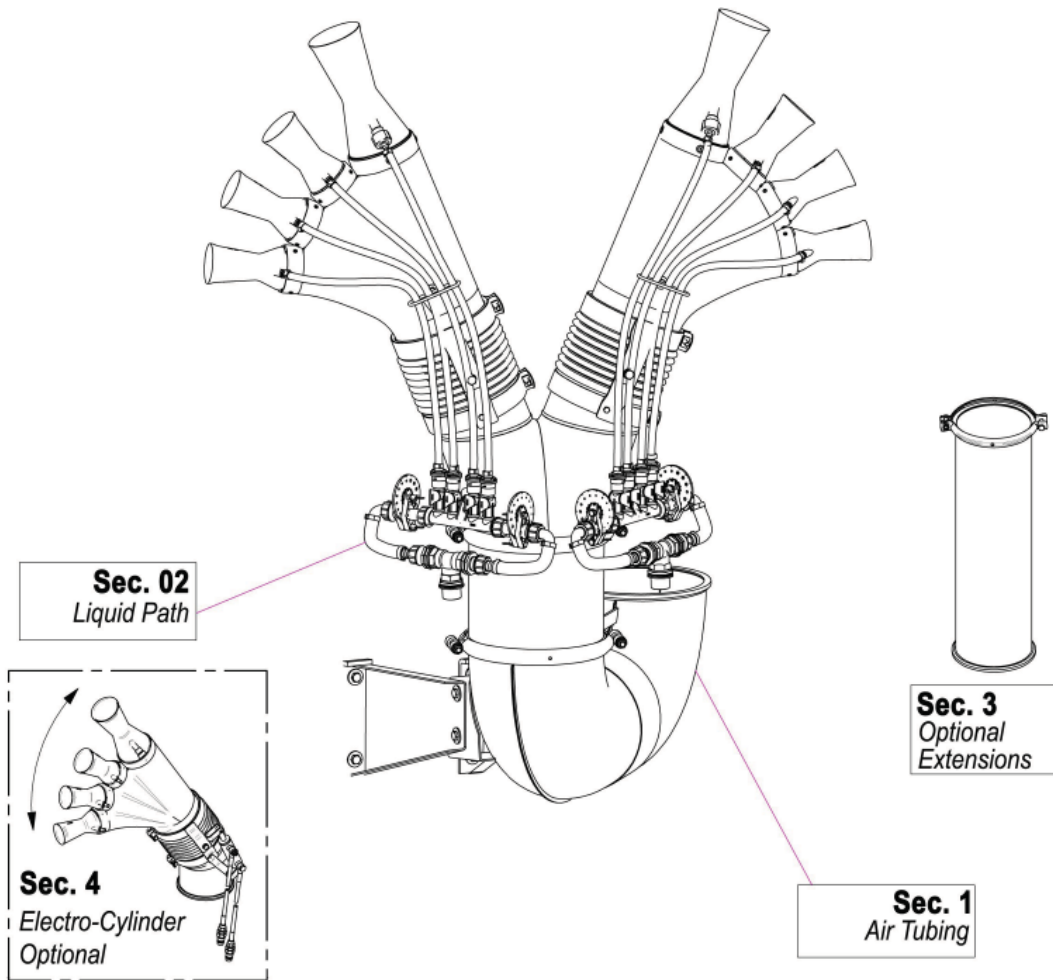
VENTURI AIR SPRAYERS DOUBLE TREE CANNON



**Parts Manual For
T2OL1805512X Head With REA4 Brackets
For P55 Sprayers**

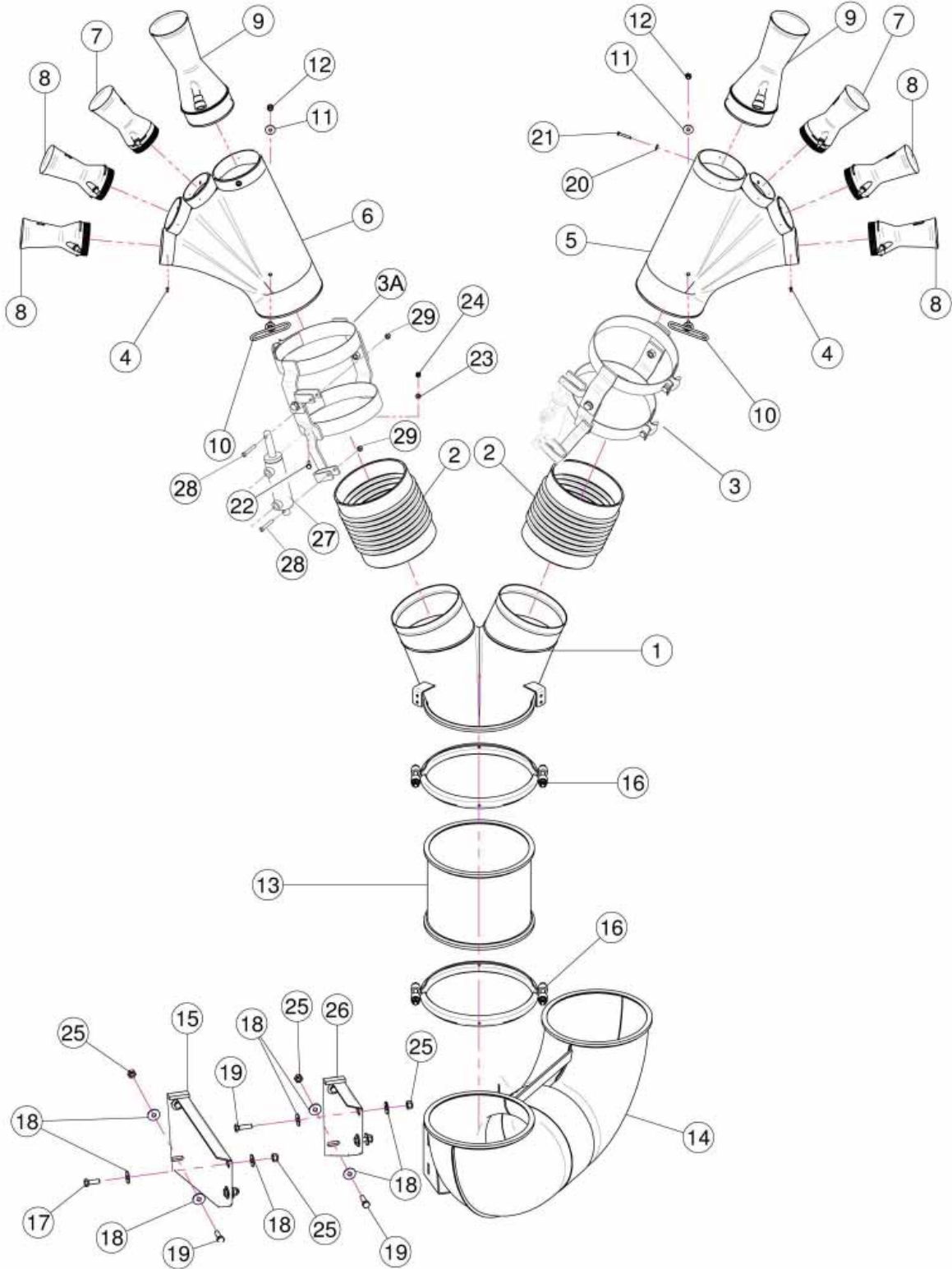
June 2013

TABLE OF CONTENTS



<u>SECTION</u>	<u>DESCRIPTION</u>	<u>PAGE</u>
1	Nozzle Parts	1-2
2	Liquid Parts	3-4
3	Extensions & Clamps	5
4	Manifold & Shut-Off Valves	6
5	Dial-A-Rate	7

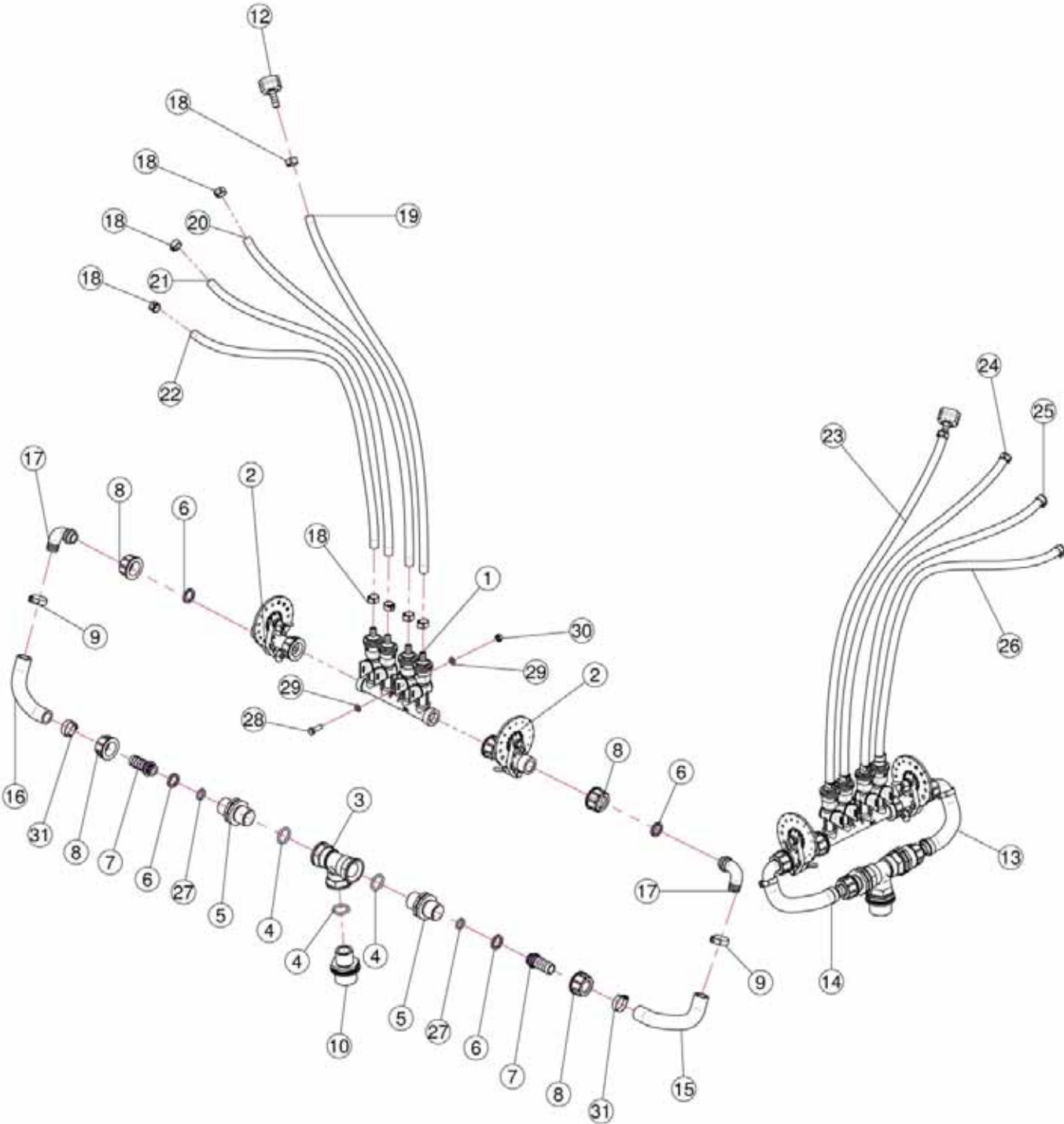
Sec. 01 - NOZZLE PARTS



Sec. 01 - NOZZLE PARTS

<u>REF.</u>	<u>QTY.</u>	<u>PART NO.</u>	<u>DESCRIPTION</u>
1	1	20.220.000	Body D.250 With 2 Outlets D.175
2	2	02.146.010	Flexible Sleeve
3	1	02.804.200	Clamp with Cylinder Bracket R.H.
3A	1	02.804.100	Clamp with Cylinder Bracket L.H.
4	18	TA.03.9.016I	Self Threaded D.3.9 x 16
5	1	00.533.000	Olive Body
6	1	00.533.100	Olive Body
7	2	10.017.080	Nozzle 17/80
8	4	10.014.080	Nozzle 14/80
9	2	10.027.120	Nozzle 27/120
10	2	21.036.000	Bracket
11	2	RP.008.024	Washer D.8 x 24
12	2	DA.008.0AG	Self Locking Nut M8
13	1	21.100.020	Extension D.250 x 200
14	1	05.802.050	Elbow 180° D.250
15	1	05.802.051	Elbow Fixing Bracket
16	2	05.513.000	Clamp D.275
17	2	TE.010.030T	Screw TE M10 x 30
18	16	RP.010.030	Washer D.10 x 30 mm
19	6	TE.010.035T	Screw TE 10 x 35
20	6	RP.005.015I	Washer D.5 x 15
21	6	RV.4.8.030	Rivet D.4.8 x 30
22	2	TE.006.020T	Screw TE M6 x 20
23	2	RP.006.000	Washer D.6
24	2	D0.06.5588G	Nut M6
25	8	DA.010.0AG	Self Locking Nut M10
26	1	05.802.151	Elbow Fixing Bracket
27	2	9302-448-002	Actuator
28	4	TC.06.40.07I	Screw M6 x 40
29	4	DA.006.0AG	Lock Nut M6

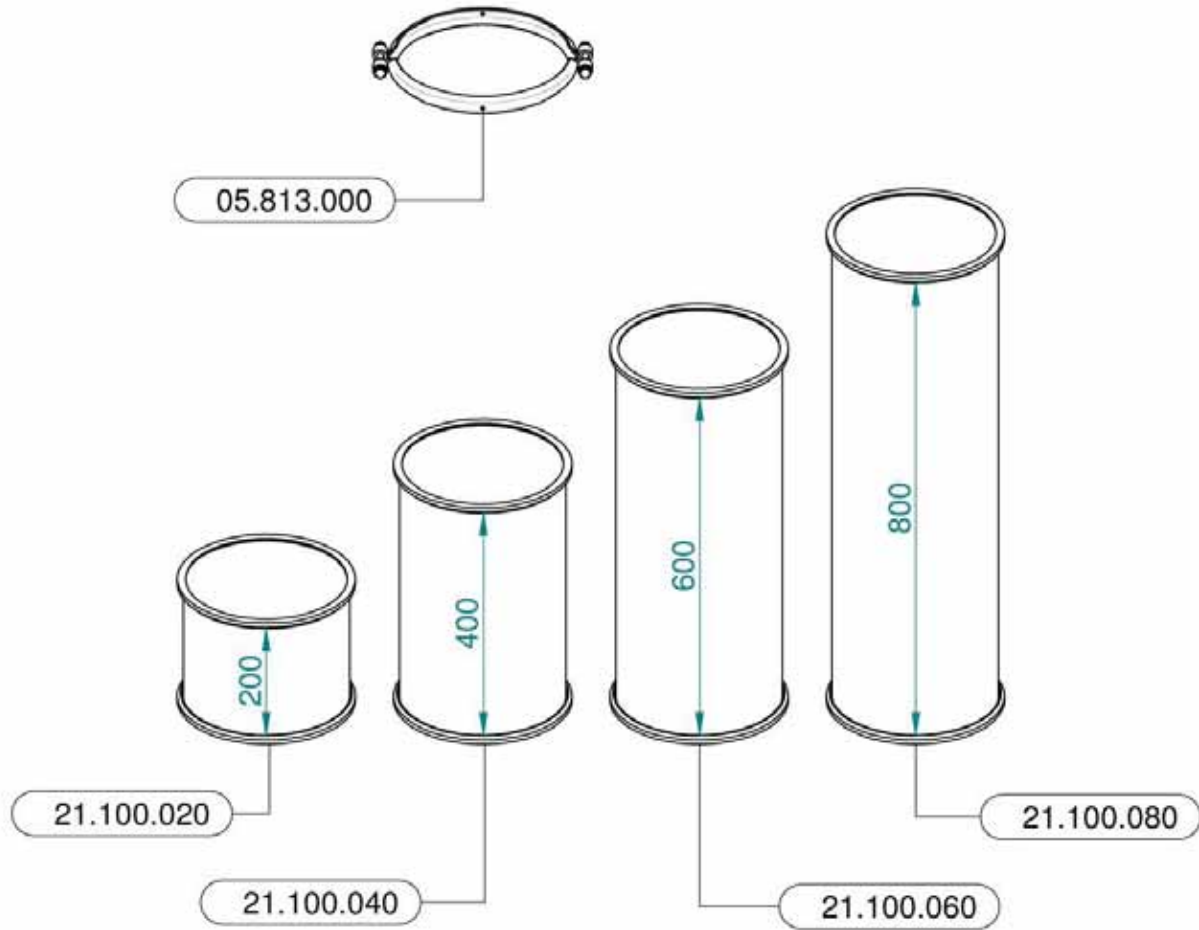
Sec. 02 - LIQUID PARTS



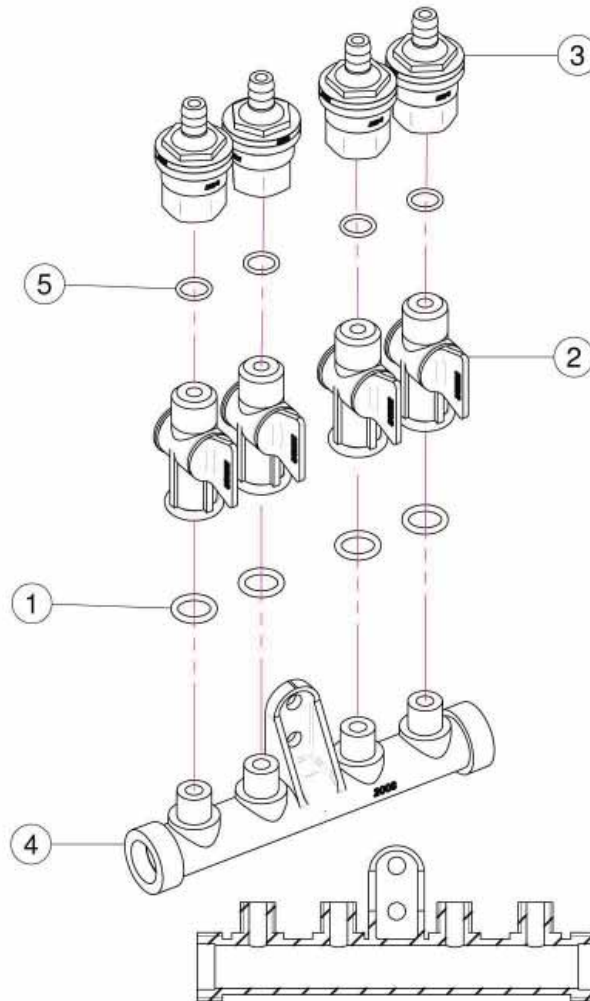
Sec. 02 - LIQUID PARTS

<u>REF.</u>	<u>QTY.</u>	<u>PART NO.</u>	<u>DESCRIPTION</u>
1	2	02.008.304C	4 Taps Liquid Manifold
2	4	02.150.000	Rotation Disc Regulation
3	2	02.396.000	Union 3/4" - 3/4" - 3/4" F.
4	6	OR.004.081	20.22 x 3.53 O-Ring Gasket
5	4	02.380.000	Nipple 3/4"
6	8	02.349.000	17 x 23 x 3 Flat Gasket
7	4	02.002.000	Straight Union 3/4" R.H. 18
8	8	00.055.045	3/4" Fly Nut
9	4	FC.023.5.025	Hose Clamp 23.5 - 25
10	2	02.293.000	1" M - 3/4" M Reducer Nipple
12	2	21.010.000	Complete R.H. D.10 Union
13	As Req'd	02.211.000	Hose D.16 x 23 L=210 (Per Foot)
14	As Req'd	02.211.000	Hose D.16 x 23 L=210 (Per Foot)
15	As Req'd	02.211.000	Hose D.16 x 23 L=200 (Per Foot)
16	As Req'd	02.211.000	Hose D.16 x 23 L=200 (Per Foot)
17	4	00.055.046	Curved Union With R.H. D.17
18	16	FC.013.5.015	Hose Clamp
19	As Req'd	02.217.000	Hose D.8 x 13 L=670 (Per Foot)
20	As Req'd	02.217.000	Hose D.8 x 13 L=620 (Per Foot)
21	As Req'd	02.217.000	Hose D.8 x 13 L=580 (Per Foot)
22	As Req'd	02.217.000	Hose D.8 x 13 L=580 (Per Foot)
23	As Req'd	02.217.000	Hose D.8 x 13 L=670 (Per Foot)
24	As Req'd	02.217.000	Hose D.8 x 13 L=620 (Per Foot)
25	As Req'd	02.217.000	Hose D.8 x 13 L=580 (Per Foot)
26	As Req'd	02.217.000	Hose D.8 x 13 L=580 (Per Foot)
27	4	OR.000.117	13.1 x 18.34 x 2.62 O-Ring Gasket
28	4	TE.006.020T	Screw TE M6 x 20
29	8	RP.006.000	Washer D.6
30	4	D0.06.5588G	Nut M6
31	4	FC.022.5.024	Hose Clamp 22.5 - 24

Sec. 03 - EXTENSIONS & CLAMPS (OPTIONAL)

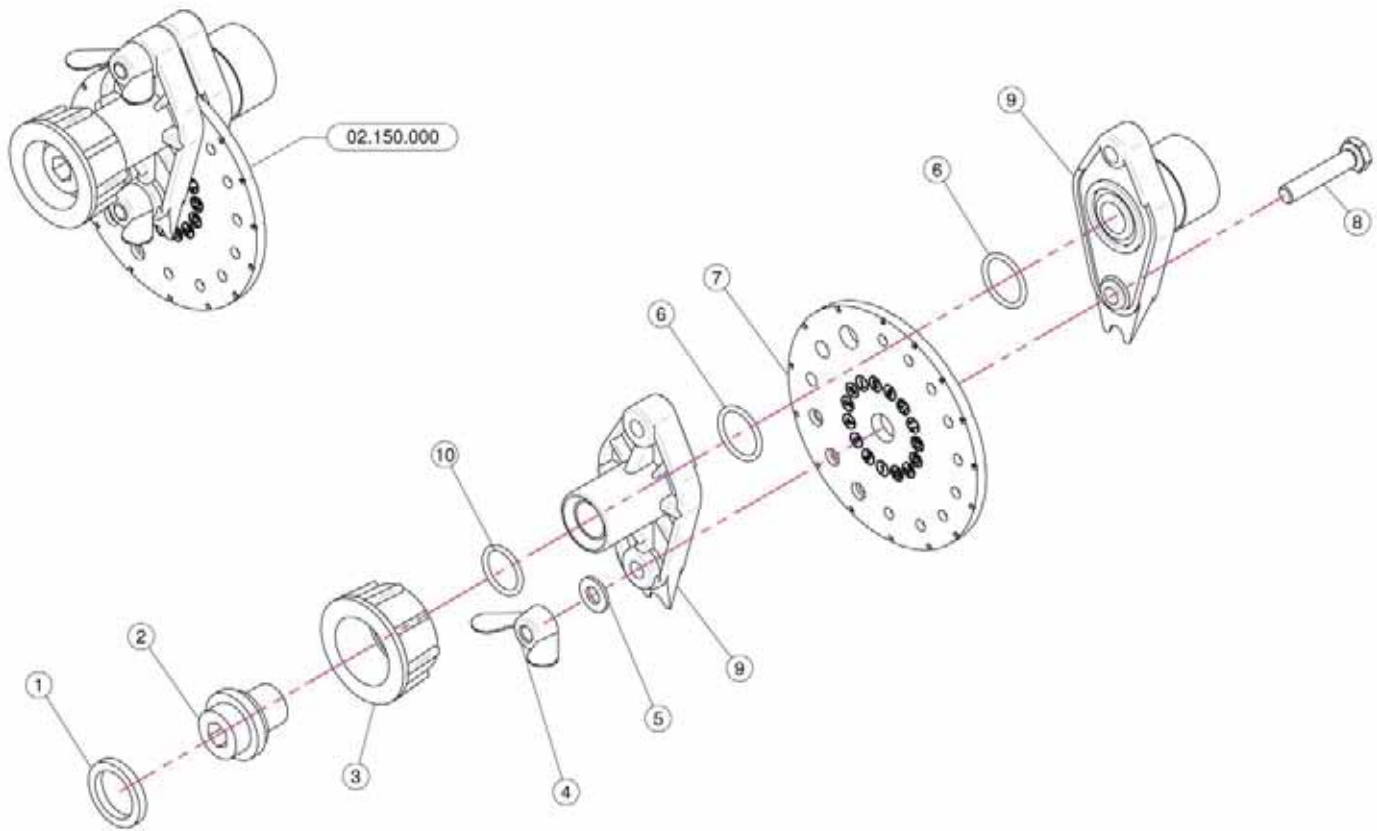


Sec. 04 - MANIFOLD & SHUT-OFF VALVES



<u>REF.</u>	<u>QTY.</u>	<u>PART NO.</u>	<u>DESCRIPTION</u>
		02.008.304C	Complete Assembly
1	4	OR.000.117	13.1 x 18.34 x 2.62 O-Ring Gasket
2	4	20.202.100	Tap Assembly
3	4	00.227.01C	Anti-Drip Valve
4	1	02.008.000	Sprayheads Liquid Manifold
5	4	OR.002.043	10.82 x 14.38 x 1.78 Nbr 70 O-Ring Gasket

Sec. 05 - DIAL-A-RATE



REF.	QTY.	PART NO.	DESCRIPTION
1	1	02.349.000	17 x 23 x 3 Flat Gasket
2	1	02.117.000	Adaptor Nipple
3	1	2002030	3/4" Fly Nut
4	2	DF.OTT.006	Wing Nut M6
5	2	RP.006.000I	INOX Washer D.6
6	2	OR1560178	D.15.6 x 1.78 O-Ring
7	1	02.148.000	Regulator Disc
8	2	TE.006.030I	INOX M6 x 30 Bolt
9	1	02.147.000	Regulator Body
10	1	OR1242178	O-Ring D.12.37 x 2.62