



ROTARY TILLER "S" SERIES

Operation, Service & Parts Manual



Carefully read this manual
before using the machine

April 2009
(updated 2016)

No part of this manual shall be reproduced, copied or disseminated by any means, without manufacturer prior authorization in writing.

Gearmore reserves the right to make any necessary changes without giving prior notice, in order to optimize the quality and safety features and does not commit itself to updating this manual every time a change is made.

This booklet provides a thorough and accurate description of the instruction and maintenance activities to be carried out on the tiller you purchased. We congratulate you on your choice and urge you to thoroughly familiarize yourself with and follow the instructions contained in this manual. This will assure you a long, safe and trouble free working life for your tiller.

Gearmore shall not assume any responsibility should problems arise as a result of lack of compliance with the instructions and/or operator's negligence.

The manual is divided in chapters and paragraphs and the pages are numbered, thus offering accurate and precise information.

The requested information can be easily found by searching the key words or referring to the index.

Date of Purchase: _____

Model Number: _____

Serial Number _____

TABLE OF CONTENTS

INDEX

GENERAL INFORMATION

Application	Page 1
Symbols	Page 1
Safety labels	Page 2
Technical data	Page 3
Main parts terminology	Page 4
Identification plate	Page 5
Recommended use	Page 5
Inappropriate use	Page 5
Torque specification	Page 5

SAFETY

Safety in the work place	Page 6
User's requirements	Page 6
Work clothing	Page 6
General safety norms	Page 6
Preparation	Page 7

SET UP

Attachment to the tractor	Page 8
3-Point Category 2 Hitch	Page 8
PTO shaft connection	Page 12
Slip clutch drive shaft	Page 12
Speed gear up setup	Page 12
Working depth adjustment	Page 13
Leveling board adjustment	Page 13

MAINTENANCE

Road transport	Page 14
Shut down	Page 14
First check	Page 14
Every 8 working hours	Page 15
Every 20 working hours	Page 15
Every 50 working hours	Page 15
Every 500 working hours	Page 15
Replacing clutch linings	Page 16

SPARE PARTS

How to order spare parts	Page 17
Troubleshooting chart	Page 18
Orchard package option	Page 19
Tiller parts assembly	Page 21
Tiller roller assembly	Page 26
Driveline assembly	Page 27
Slip clutch assembly	Page 28
Limited warranty	Page 29

GENERAL INFORMATION

GENERAL INFORMATION

APPLICATION

The S Series Rotary Tillers are designed to till soil for seedbed or planting preparation. The S Series Tillers are adapted for tractors with 540 rpm PTO speed and Category 2, 3-point hitch tractors up to 90 HP. These tillers are also Quick Hitch adaptable (by means of Quick Hitch Optional Kit).

SYMBOLS

This booklet contains three "safety pictograms" which highlight the relevant danger levels or important information:



It draws the operator's attention to special situations which may jeopardize people's safety.



It draws the attention to situations which unfavorably affect the machine efficiency, but not people's safety.

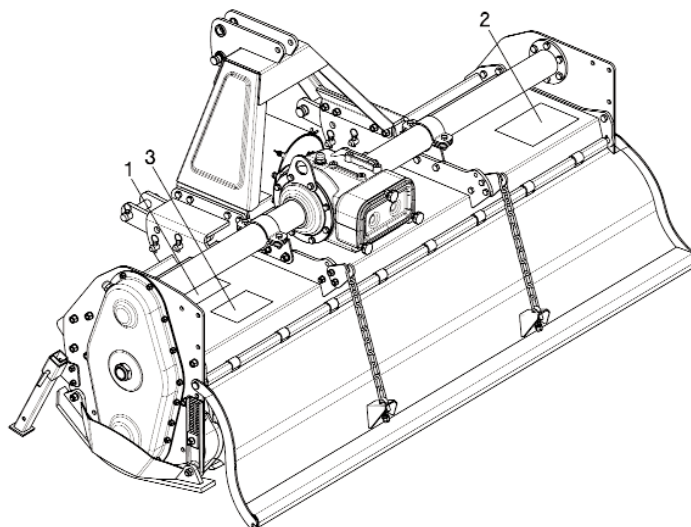


It is used for general information, when people's safety or the efficiency of the parts are not at risk.

SAFETY LABELS

SAFETY LABELS

The safety labels and information on the machine (labels 1, 2 and 3), must be complied with. Failure to comply with these warnings may result in severe injuries or even death. Make sure that the labels are always present and legible; should this not be the case, contact your nearest Gearmore dealer to request replacements



DANGER

1 MAKE SURE DRIVELINES ARE OF THE CORRECT LENGTH AND PROPERLY CONNECTED. **DRIVELINE SEPARATION** AND/OR PTO STUB SHAFT FAILURE CAN CAUSE INJURY OR DEATH. (See Operator's Manual for procedure)

1. SEE MANUAL FOR MINIMUM OVERLAP & MAXIMUM MAXIMUM LENGTHS

2 MAKE SURE THAT DRIVELINE SHIELDS ARE INSTALLED CORRECTLY AND **TURN FREELY** TO AVOID INJURY OR DEATH FROM ENTANGLEMENT

3 MAKE SURE THAT DRIVELINE IS INSTALLED CORRECTLY ON TRACTOR PTO SHAFT. MOVE YOKE BACK AND FORTH UNTIL LOCKING COLLAR CLICKS FORWARD AND LOCKS YOKE IN PLACE.

4 **540 PTO RPM** UNLESS SPECIFICALLY MARKED OTHERWISE.

4781001

WARNING

SHIELDS AND DEFLECTORS MAINTAINED IN BAD CONDITION MAY CAUSE INJURY OR DEATH FROM ENTANGLEMENT WITH ROTATING PARTS, BEING HIT BY OBJECTS THROWN WITH GREAT FORCE BY BLADES, OR BY BLADE CONTACT.

- Always replace Guards which have been removed for maintenance. Never operate with guard missing or broken.
- Chain Guards, Gearbox, Drivelines Shields, eventual Rubber-fabric Deflectors, and solid band enclosures are subject to wear and lost or broken parts must be replaced or repaired as soon as damage is found.
- Safety shielding must be installed and in good condition to avoid the possibility of thrown objects when the machine is operated in any area where thrown objects could cause injury.

4781006

DANGER

FAILING TO FOLLOW SAFETY MESSAGES AND OPERATING INSTRUCTIONS CAN CAUSE SERIOUS BODILY INJURY OR EVEN DEATH TO OPERATOR AND OTHERS IN THE AREA.

1. **READ MANUAL**

2. **SEAT BELTS, ROPS NO RIDERS**

3. **SAFETY SHOES, HARD HAT, SAFETY GLASSES**

4.

- READ OPERATOR'S MANUAL CAREFULLY AND PAY ATTENTION TO SAFETY DECALS FOR TRACTOR AND TILLER THOROUGHLY TO AVOID MISUSE, ABUSE, AND ACCIDENTS. PRACTICE BEFORE OPERATING.
- OPERATE ONLY WITH ROPS AND FASTEN SEAT BELT TO AVOID INJURY AND POSSIBLE CRUSHING DEATH FROM OVERTURN. ALLOW NO RIDERS ON TRACTOR OR TILLER. FALLING OFF CAN CAUSE SERIOUS INJURY OR DEATH BY BEING RUN OVER BY TRACTOR OR TILLER OR BY BEING CUT BY THE ROTATING TILLER BLADES. ALLOW NO CHILDREN ON OR NEAR TILLER OR TRACTOR.
- TO AVOID INJURY FROM FALLING OBJECTS WEAR HARD HAT, SAFETY GLASSES AND SHOES.
- BLOCK UP OR SUPPORT MACHINE SEVERELY BEFORE PUTTING HANDS OR FEET UNDER, OR WORKING UNDERNEATH LIFTED PARTS TO AVOID CRUSHING INJURY OR EVEN DEATH FROM SUDDEN, INADVERTENT DROPPING. MAKING SURE AREA IS CLEAR BEFORE LOWERING.
- BEFORE TRANSPORTING, PUT LIFT LEVER IN LIFT (DETENT) POSITION AND FOLLOW TRAFFIC CODES. SLOW DOWN AT NIGHT, IN TURNS, & ON HILLSIDES.
- MAKE SURE THAT SMV SIGN, WARNING LIGHTS, AND REFLECTORS ARE CLEARLY VISIBLE.
- NEVER OPERATE WITH TILLER RAISED OF GROUND TO REDUCE POSSIBILITY OF INJURY FROM OBJECTS THROWN UNDER TILLER STRUCTURE.
- BEFORE DISMOUNTING, SECURE TILLER IN TRANSPORT POSITION OR LOWER TO GROUND, STOP PTO, PUT TRACTOR IN PARK OR SET BRAKE, STOP ENGINE, AND REMOVE KEY. NEVER MOUNT OR DISMOUNT MOVING VEHICLE TO PREVENT POSSIBLE CRUSHING INJURY OR DEATH.

5. **TRANSPORT SAFELY**

6. **USE SMV, LIGHTS, & REFLECTORS**

7. **DO NOT OPERATE WITH TILLER RAISED**

8. **MOUNTING & DISMOUNTING**

4781002

TECHNICAL DATA

TECHNICAL DATA

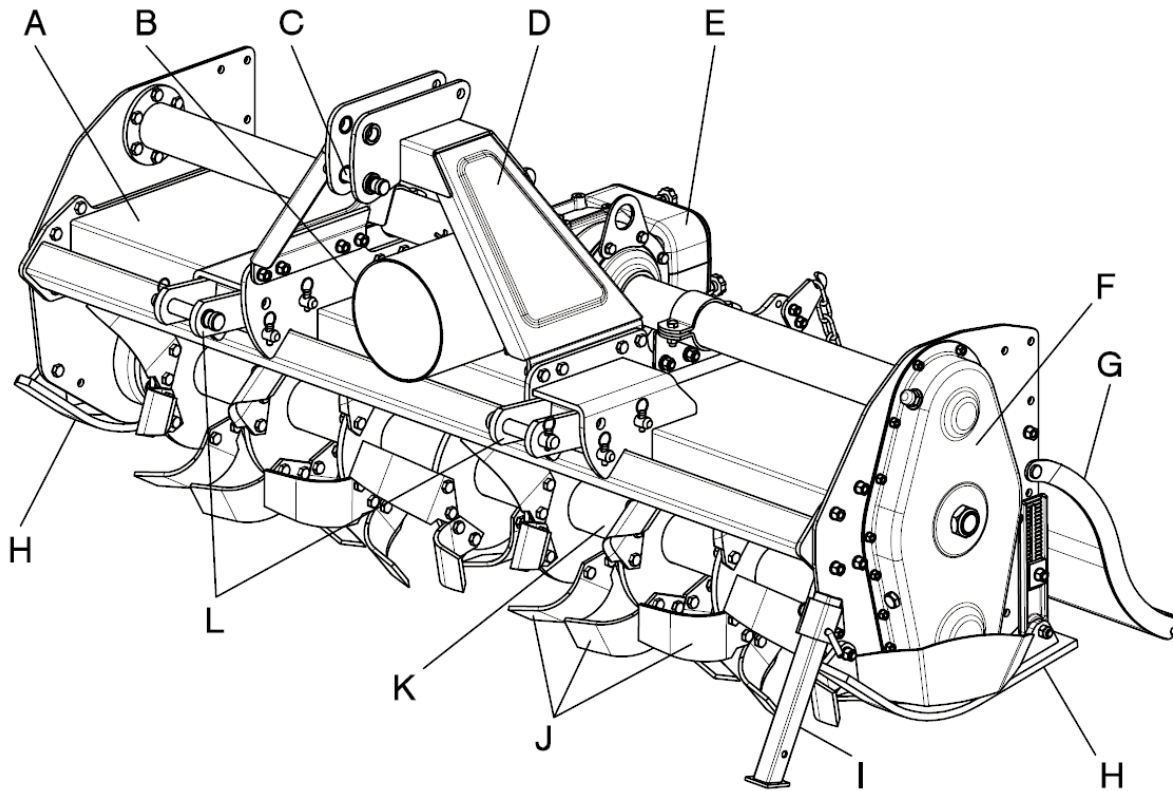
Model	Tilling Width		HP	Weight (Approx.)		Working Depth (Maximum)		Side Drive		Blades (Qty.)	Blades	
	cm	Inches		kg	lbs	cm	Inches	Chain	Gear		Blades/Flange	Shape
S	160	63	60-90	536	1181	20	8		*	36	6	Curved
	180	73	60-90	568	1252	20	8		*	42	6	Curved
	205	83	60-90	612	1350	20	8		*	48	6	Curved
	230	93	60-90	660	1455	20	8		*	54	6	Curved
	255	103	60-90	715	1576	20	8		*	60	6	Curved



When asking for information or technical service, always specify the machine type and width.

MAIN PARTS TERMINOLOGY

MAIN PARTS TERMINOLOGY



- | | | | |
|----|-------------------|----|--------------------|
| A) | Main Frame | G) | Rear Board |
| B) | PTO Guard | H) | Skid |
| C) | Top Link Coupling | I) | Parking Stand |
| D) | Third Point Mast | J) | Tines |
| E) | Gearbox | K) | Rotor |
| F) | Transmission Case | L) | Lower Hitch Blocks |

INFORMATION

IDENTIFICATION PLATE

An identification plate is placed on each tiller and is structured as follows:

Serial number (sample):



RECOMMENDED USE

The tillers described in this instruction and maintenance manual, have been designed explicitly to till the land. Any other use jeopardizes the operator's safety and the machine integrity.

INAPPROPRIATE USE

The tillers shall not be used as follows:

- Connected to vehicles which do not have a suitable power or weight.
- Without being properly installed by securing the hitch brackets to all three points of the tractor lift unit.
- Tilling of extremely stony or unsuitable ground.
- Raising or lifting of the equipment when the power take off is engaged.
- In close proximity to person/s when power is engaged.
- Do not stand or step on the equipment when it is being operated or transported.
- Do not operate the machinery while wearing unsuitable (loose fitting) clothing.

TORQUE SPECIFICATIONS

For correct hardware tightening on the tiller, we suggest the use of suitable torque wrench and the applicable torque as listed in the table below:

M-THREADED SCREW/BOLTS
Bolt grade

Thread	8.8		10.9	
	Nm	Lb-ft	Nm	Lb-ft
M6	11	8.5	17	12
M8	28	20	40	30
M10	55	40	80	60
M12	95	70	140	105
M14	150	110	225	165
M16	240	175	305	225
M18	330	250	475	350

SAFETY

SAFETY IN THE WORKPLACE

Most of the accidents, which occur while the operator is using the machine or the equipment or carrying out maintenance and repair activities, are caused by the non-compliance with the main safety requirements.

Therefore the potential risks must be fully understood and special attention must be paid to the activity which is being executed.

**If potentially dangerous situations are known,
accidents can be prevented!**

USER'S REQUIREMENTS

The equipment user must have the following:

Physical: good sight, co-ordination and capability to execute all instructions in a safe manner.

Mental: the users must understand and follow the prescribed norms, rules and safety measures. They must be careful, pay attention to their own safety and the safety of other people and act properly and in a responsible way.

Training: the users must read and understand this manual, its pictures and charts, and the identification and hazard plates. They must be specialized, trained and qualified on any use and maintenance activities.

WORK CLOTHING

The following clothing and personal protective equipment must be used when working and executing maintenance and repair activities:

- Overalls or any other comfortable outfit; make sure that they are not too loose since they might be caught by moving parts.
- Protective gloves.
- Goggles or mask to protect the eyes and face.
- Safety helmet.
- Safety shoes.



Make sure that the personal protective equipment is properly stored and complies with the laws in force.

GENERAL SAFETY NORMS

The features of the area where work is taking place must always be taken into consideration:

- Do not stand in the working radius of the operating machinery or any other machine accessories when the equipment is running.

PREPARATION

Prepare the work:

- Do not drink alcohol, take drugs, or any other substances which may affect your ability to use the equipment before or when working.
- Make sure that there is sufficient fuel in the tractor to prevent the machine from stopping during work.
- Do not use the equipment under unsafe conditions, e.g. do not make temporary repairs just to start or keep working; do not work at night if the area is not well illuminated.

When working or executing maintenance activities, remember:

- The labels and stickers providing instructions on the use of the equipment or information on dangers must not be removed or hidden, and must be legible.
- Do not remove the safety devices, covers and safety guards, unless maintenance activities are being carried out. If the safety devices must be removed, turn the engine off, remove them correctly and re-install them before turning the tractor on.
- Do not lubricate, clean or adjust moving parts.
- Use the appropriate tools to execute maintenance or adjustment activities on the equipment.
- Do not use damaged or unsuitable tools, e.g. pliers rather than wrenches etc.
- Prior to carrying out activities on hydraulic lines under pressure, or disconnecting their components, make sure that the line is no longer under pressure and that it does not contain any hot fluids.
- Check all the fittings and make sure that they are well connected before supplying pressure to the hydraulic lines.
- Make sure that no tools, clothes or any other materials are left in areas where moving parts are present when the maintenance and repair activities are completed.
- Do not give directions and make signals at the same time during a maneuver. Maneuver directions and signals must be given from one person only.
- Do not unexpectedly call an operator, if not necessary. Do not startle the operator, e.g. by throwing objects.
- Pay attention to people in the vicinity of the work area, especially children!
- Make sure that nobody is standing in the working range of the equipment.
- Do not use the equipment to lift people.
- When the equipment is not needed, turn the engine off, leave the vehicle on a flat surface, with the first gear and the parking brake engaged. Disengage the power take off.
- Do not execute any cleaning, lubrication, repair or adjustments when the engine is running and the equipment is in the raised position.
- Do not work on steep slopes, if the stability of the vehicle can be jeopardized.

Manufacturer shall not assume any responsibilities if these instructions are not strictly followed.

SET-UP

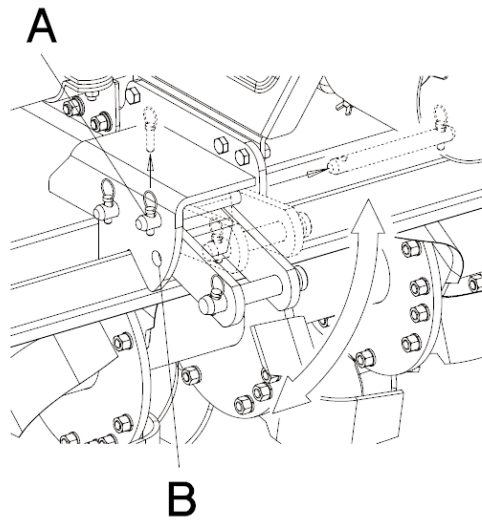
ATTACHMENT TO THE TRACTOR

This tiller may be attached to any tractor equipped with a Cat. 2, 3-point hitch with suitable ball ends; it can also be attached by means of a Cat. 2 Quick Hitch.

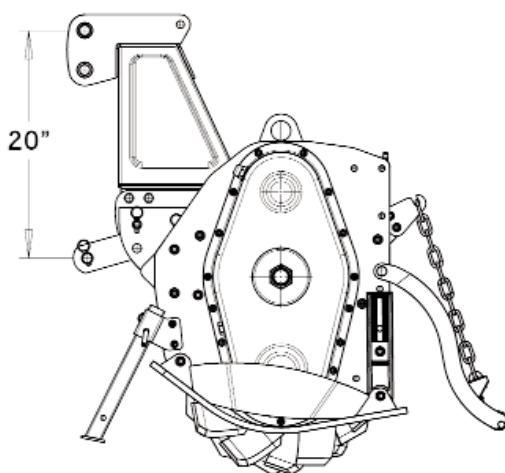
3-POINT CATEGORY 2 HITCH

To connect the tiller to the tractor's Cat. 2, 3-point hitch, do the following operations:

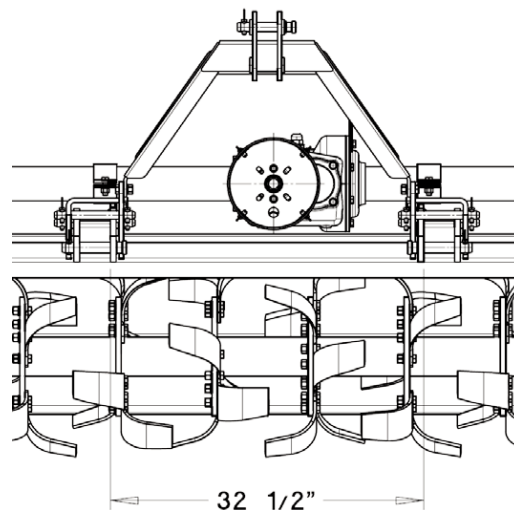
- 1) Put the floating brackets in the lower position inserting the pin A in the upper hole as shown in picture 1; this gives you the standard A.S.A.E. vertical dimension of 20" (picture 2). The horizontal distance between the brackets is 32 1/2".



picture 1

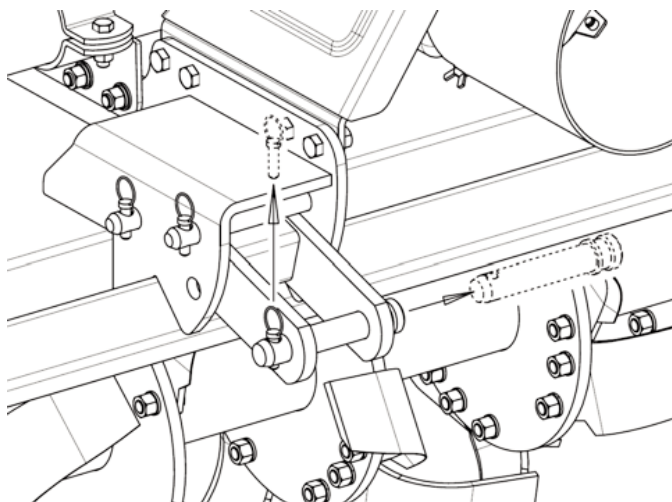


picture 2



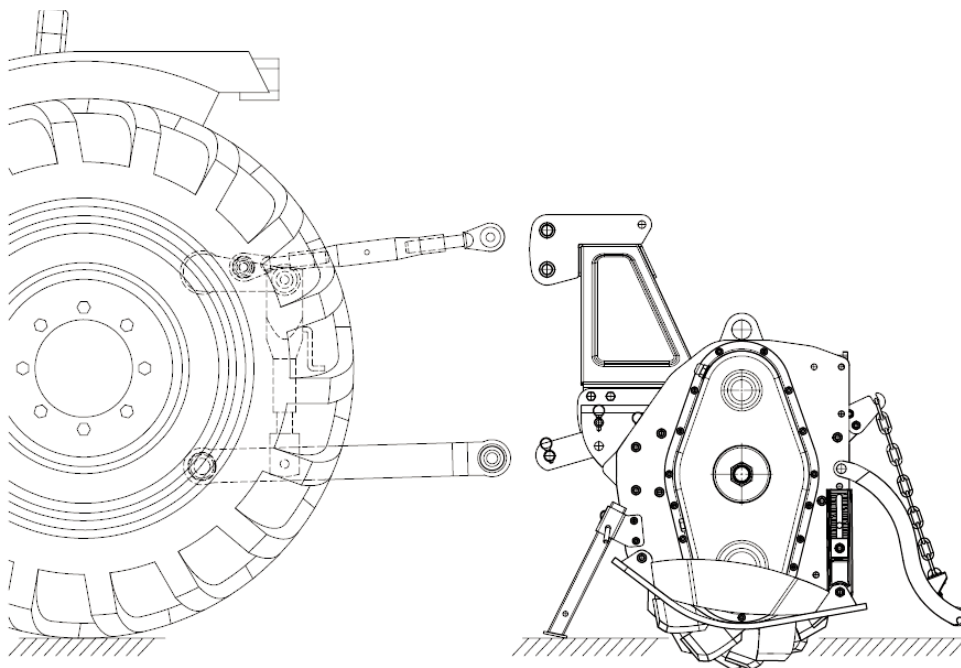
SET-UP

- 2) Remove the cotter pins from the hitch pins (picture 3);
- 3) Remove the lower hitch pins from the lower hitch blocks (picture 3);



picture 3

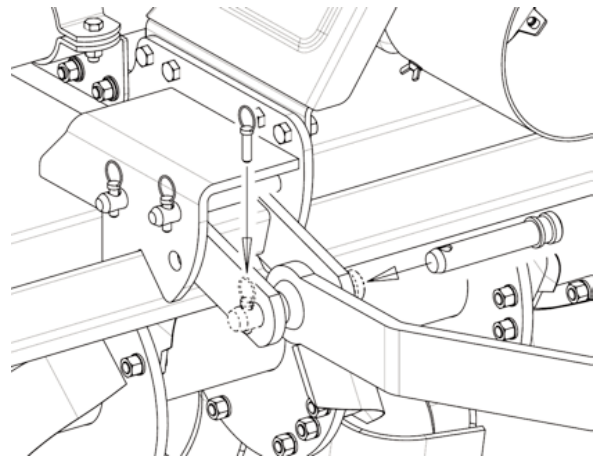
- 4) Before attaching the equipment to the tractor, make sure that the ground is smooth and flat and that nobody is standing between the tractor and the tiller; slowly move the tractor towards the tiller by aligning the tractor lifter arms with the blocks' holes (picture 4); turn the engine off and pull the brake;



picture 4

SET-UP

- 5) Insert the lower hitch pins through the hitch blocks and ball ends (picture 5);
- 6) Secure them by means of the cotter pins which were previously removed (picture 5);



picture 5

- 7) Connect the tractor top link to the third upper point by removing the pin located between the two plates, inserting the top link and securing it by means of the cotter pin. Shift the parking stand in the upper position .
- 8) Adjust the top link so that the upper part of the frame is parallel to the ground. Block all the linking parts by means of the sway chains or arms.
- 9) Make sure that the central unit axis (case/bevel gear pair) is parallel to the ground, thus minimizing the stresses on the power take off and increasing the working life of the equipment.



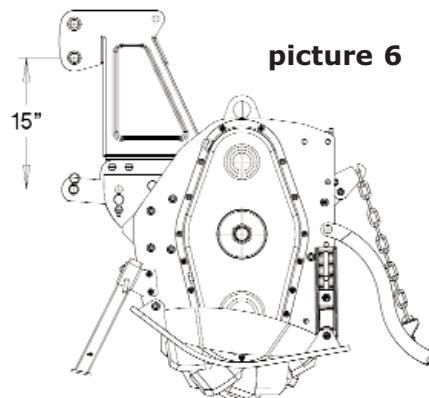
Caution

After executing all the above mentioned activities, make sure that all the nuts and bolts are tightened.

3-POINT CATEGORY 2 QUICK HITCH

The S Series Reverse Tillers are Cat. 2 Quick Hitch adaptable. To attach the implement to the tractor it is necessary to order the Quick Hitch Kit composed of 3 bushings. The following operations are needed:

- 1) Put the floating brackets in the upper position inserting the pin in the lower hole as shown in picture 7; this gives you the standard A.S.A.E. vertical dimension of 15" (picture 6).



picture 6

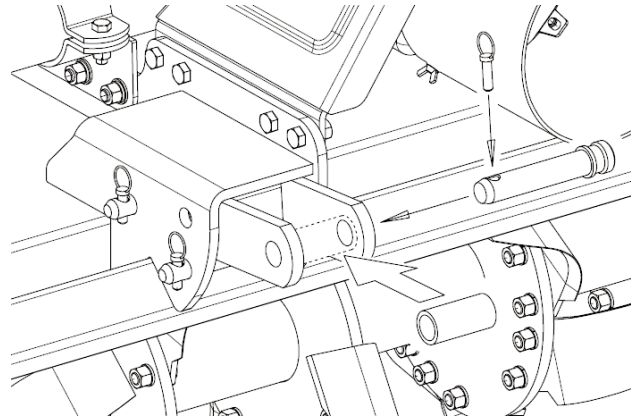
SET-UP

- 2) Remove the cotter pin from the hitch pins and lower hitch pins from the lower hitch blocks (picture 3).

- 3) Insert the lower bushing of the kit in the lower hitches (picture 7);

- 4) Insert the lower hitch pins through the hitch block and bushing (picture 7);

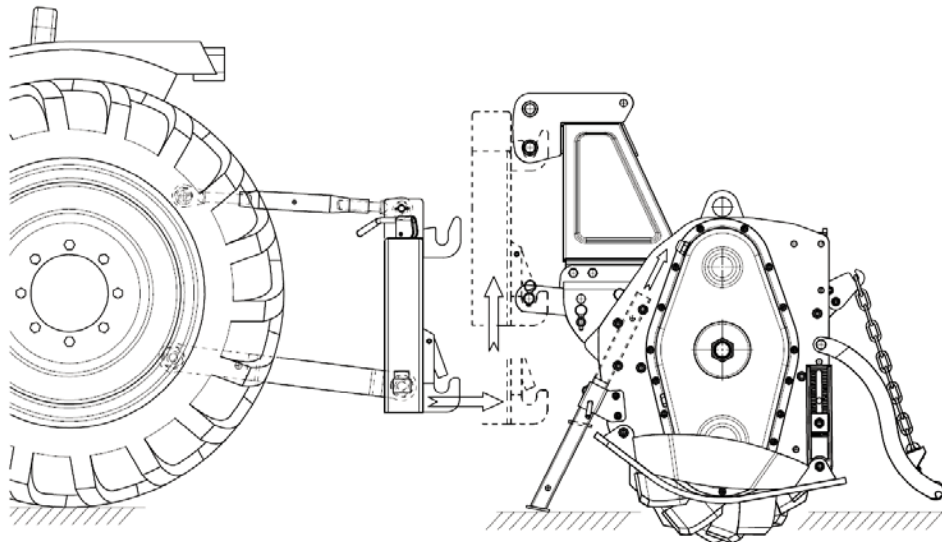
- 5) Secure it by means of the cotter pins which were previously removed (picture 7);



picture 7

- 6) Repeat the same operations from 2 to 5 for the upper bracket with the upper bushing.

- 7) Before attaching the equipment to the tractor, make sure that the ground is smooth and flat and that nobody is standing between the tractor and the tiller; slowly move the tractor towards the tiller by aligning the tractor lifter arms with the bracket holes; turn the engine off and pull the brake.



- 8) Lift the Quick Hitch until its hooks engage the hitches of the implement.

- 9) Raise the parking stand to the upper position.

SET-UP

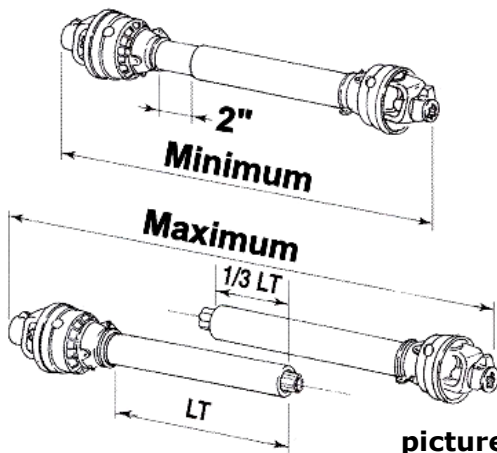
PTO SHAFT CONNECTION

Before installing the PTO shaft make sure that the RPM rating and the direction of rotation match those of the tractor. Carefully read the PTO shaft and tractor instructions. Furthermore, accurately read the instructions of the manufacturer of the PTO shaft and of the tractor.

Before starting any activity, make sure that the guards are installed on the power take off of the tractor and PTO shaft. Make sure that they cover the PTO shaft throughout its length.

Caution

When fully extended, the plastic pipes must overlap by at least 1/3 of the length of the pipes (LT). When retracted, the minimum acceptable clearance is 2" (picture 8).



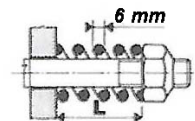
picture 8

Check that the PTO shaft minimum and maximum length are within the parameters of the machine tractor coupling.

Should problems arise, contact your dealer. After the installation, anchor the PTO shield to the tractor and machine using the special chains; make sure that it turns smoothly. If the PTO shaft is equipped with safety devices, e.g. torque limiters or free-wheel devices, install them on the operative machine side. For the use and maintenance of the PTO shaft, please refer to the relevant manual.

SLIP CLUTCH DRIVE SHAFT

This tiller has a drive shaft with a slip clutch, which has been calibrated for a certain overload. To adjust the clutch, tighten or loosen bolts equally. Don't over-tighten or clutch will lock and not slip under stress, which could cause damage during operation. The clutch assembly should get warm (normal temp. 104-122°F) under normal operation. If the clutch gets extremely hot, this is a sign of slippage. If the machine sits for an extended period of time with no usage, the bolts should be loosened and the PTO engaged. This will allow the clutch discs to become free again. After a few seconds, shut-off the tractor and retighten bolts equally. Recheck clutch assembly for temperature after using in tilling application. If it is too hot, the bolts need tightening. If it is too cool, loosen bolts.



WORKING LENGTH mm (in.)

SPRING HEIGHT FF-4	
	Nm
L=29.5 (1.161")	---
L=29.0 (1.142")	1200
L=28.5 (1.122")	1500
L=28.0 (1.102")	1820
L=27.5 (1.083")	---
L=27.0 (1.063")	---
L=26.5 (1.043")	---

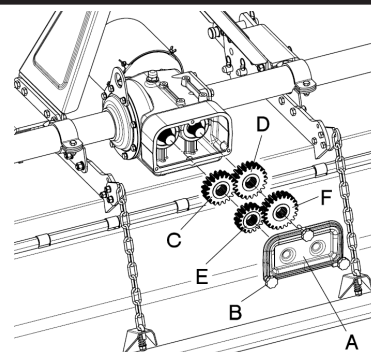
SPEED GEAR SETUP

The Series S gearbox is provided with two pair of gears. By changing their relative position 4 different rotor speeds are achieved. Choose the desired rotor speed and follow the instructions below:

- 1) Drain the oil from the gearbox;

SET-UP

- 2) Remove the cover A unscrewing the lobe knobs B (see picture 9).



picture 9

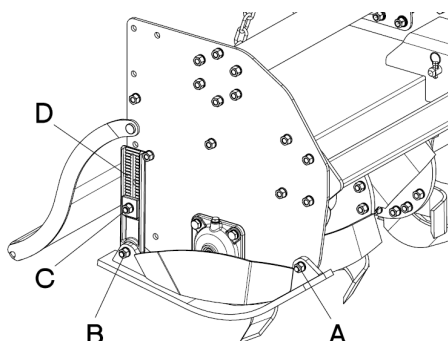
- 3) Change the position of the gears C and D according to the following table:

	C GEAR	D GEAR	ROTOR SPEED
1	23 teeth	17 teeth	145 rpm
2	21 teeth	19 teeth	175 rpm
3	19 teeth	21 teeth	215 rpm
4	17 teeth	23 teeth	260 rpm

- 4) Fix the remaining gears E and F on the suitable pins on the internal face of the cover;
5) Put back the cover in its position, tighten the screws, and fill with oil.

WORKING DEPTH ADJUSTMENT

The working depth of the equipment depends on the position of the lateral skids. If the skids are raised, the working depth increases; if the skids are lowered, the working depth decreases.



picture 10

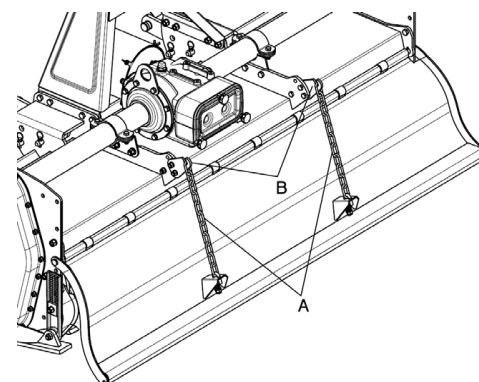
To adjust the working depth, loosen nut **A**, **B**, and **C** (picture 10) and adjust the skid height according to the notches **D**.

When the adjustment is completed, tighten the screws to the correct torque, according to the values suggest in **Torque Specifications**, page 5.

IMPORTANT: Make sure that the skids are set at the same height on both sides.

LEVELING BOARD ADJUSTMENT

The rear leveling board can be adjusted in height to better compact the ground and make it flat. The adjustment can be made by releasing chains **A** (picture 11) from upper hooks **B** and inserting them back to the desired height.



picture 11

MAINTENANCE



Danger

These activities must be carried out with the engine off, the power take off disengaged and the hand brake applied. If needed, lift the equipment and place it on supports, thus preventing any injuries that might be caused by a sudden fall of the equipment.

START UP

After carrying out these adjustments, the equipment is ready for use. When at the working area, do not start the power take off with the tiller in working position in the ground. Be sure to lift it by a few centimeters using the tractor lift. Start the engine, engage the power take off, lower the equipment to its working position and start.

ROAD TRANSPORT

With reference to road transport, follow local traffic regulations.

SHUT DOWN

The following activities are recommended if the tiller will not be used for a long period of time:

1. Clean and dry the equipment.
2. Inspect the equipment and replace the damaged or worn parts if necessary.
3. Tighten all the screws and nuts.

Lubricate and cover the machine with a tarpaulin and store it in a dry place.

MAINTENANCE

Maintenance is crucial for the working life and efficiency of any agricultural equipment. If the equipment is properly maintained and operated, a long working life and operator safety are assured.

The maintenance intervals indicated in this booklet are provided as a mere reference and are related to normal working conditions; changes may occur depending on the type of activities, environmental dust, seasonal factors, etc.



Caution

- Before injecting lubricating grease into the grease fittings, clean the fittings to prevent mud, dust, or any other foreign matter from contaminating the grease and reducing the lubrication effect.
- When adding or changing the oil, use the same type of oil to prevent mixing oils with different features.
- All maintenance activities must be carried out with the tiller resting horizontally on the ground.
- After using the equipment for a few hours, make sure that all the bolts (especially tine bolts) are tightened; regularly check all the machine guards.

FIRST CHECK

- After 50 working hours, change the oil in the gearbox and make sure that all the screws and bolts are tightened.

MAINTENANCE

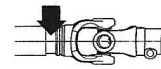
EVERY 8 WORKING HOURS

- Grease the PTO shaft crosses.

EVERY 20 WORKING HOURS

- Grease the PTO shaft inner drive tube.

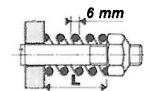
20h



Inner tube
Tube intérieur

EVERY 50 WORKING HOURS

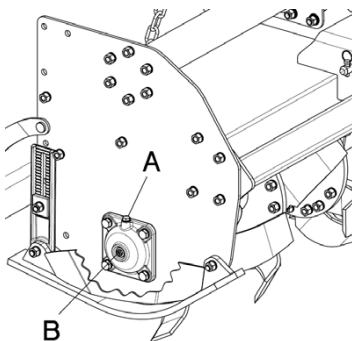
- Check the oil level in the external rotor bearing through the inspection plug B. If needed remove the plug A and add SAE EP 80W90 oil (picture 12).
- Check the oil level in the case/bevel gear pair by removing gearbox's upper oil plug (A - picture 13); oil level should be contained between the 2 nicks of MIN & MAX of the dip stick oil plug (B - picture 13). If needed add SAE EP 80W90 oil.
- Check the oil level in the side transmission (A - picture 14). If needed add SAE EP 80W90 oil.
- Make sure that all the screws and bolts, especially on the blades, are tightened.
- Check slip-clutch spring tension (1500 Nm).



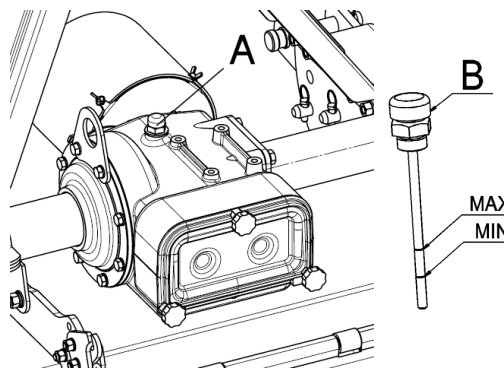
WORKING LENGTH mm (in.)	
SPRING HEIGHT	
FF-4	
	Nm
L=29.5 (1.161")	---
L=29.0 (1.142")	1200
L=28.5 (1.122")	1500
L=28.0 (1.102")	1820
L=27.5 (1.083")	---
L=27.0 (1.063")	---
L=26.5 (1.043")	---

EVERY 500 WORKING HOURS

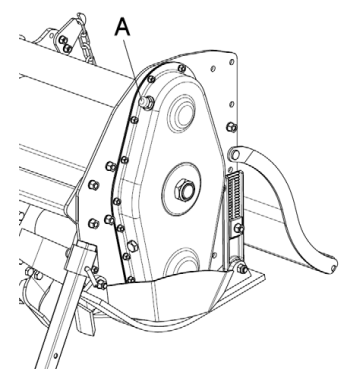
- Change the oil of the case/bevel gear pair, side transmission and rotor support; use SAE EP 80W90 oil. Contact the closest dealer for this maintenance activity.



picture 12



picture 13



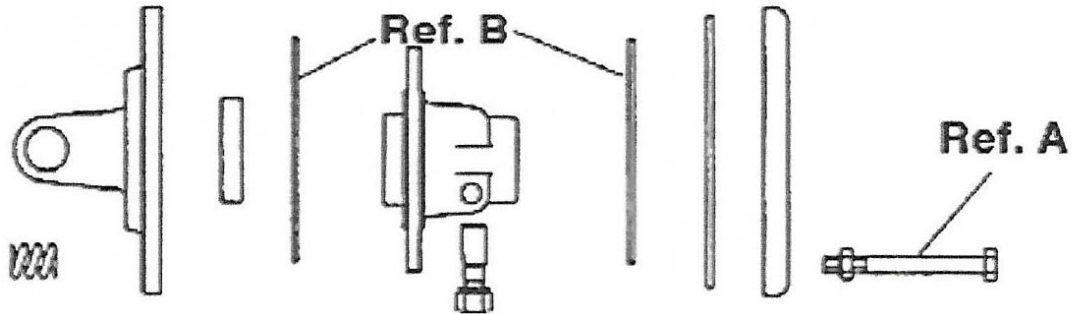
picture 14



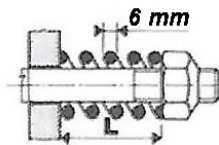
Caution

The old oil must be disposed of in compliance with the local laws where these activities are carried out; do not spill or dispose of waste oil on the ground.

REPLACING CLUTCH LININGS



1. Mount clutch assembly in vise.
2. Remove all bolts and nuts (**Ref. A**).
3. Disassemble all components.
4. Check the condition of all parts, friction plates especially.
5. Replace clutch linings (**Ref. B**).
6. Reassemble the components, install spring with their corresponding bolts and nuts.
7. Tighten nuts following an alternating cross pattern until reaching a height of 28.5 mm (1.122").
8. Check that the height is the same for all springs.
9. Reinstall driveline, making sure all shields are in place.



WORKING LENGTH mm (in.)

SPRING HEIGHT FF-4	Nm
L=29.5 (1.161")	---
L=29.0 (1.142")	1200
L=28.5 (1.122")	1500
L=28.0 (1.102")	1820
L=27.5 (1.083")	---
L=27.0 (1.063")	---
L=26.5 (1.043")	---

SPARE PARTS



Danger

The maintenance activities must be carried out with the engine off, the power take off disengaged, the parking brake engaged, and the equipment placed on the ground.

BLADES REPLACEMENT

To assure the optimum efficiency of the machine, make sure that the tiller blades are in a good working condition and that their bolts are tightened; replace them if they are broken or bent. The new parts must be installed in the original position.

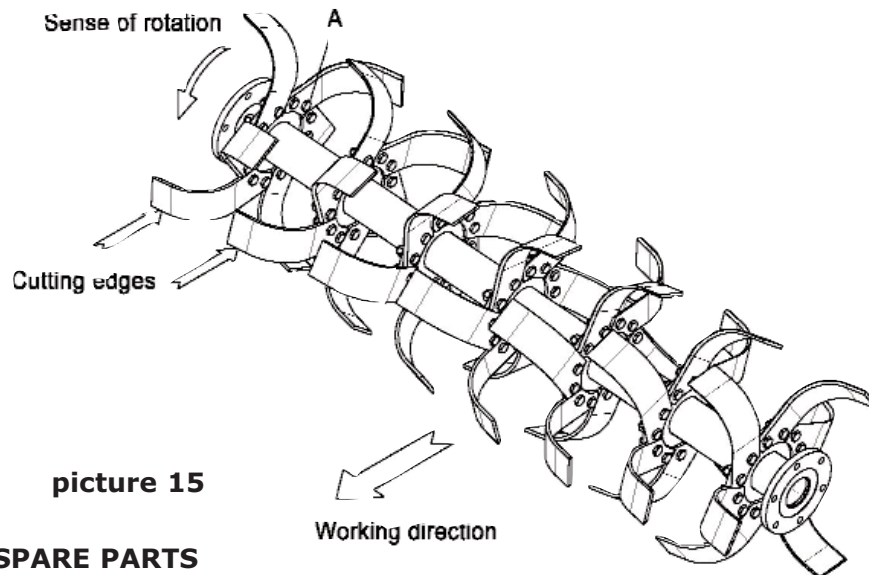


Danger

Before replacing the blades, turn the tractor engine off, pull the parking brake, disengage the power take off, raise the tiller using the tractor lift, and install supports to prevent accidental dropping of the machine.

Pay special attention to the bolts **A** on the blades (picture 15): the screw head must be placed on the blade side, with the washer and the nut on the flange side, so that the bolts cannot loosen while the equipment is being used.

When several blades must be replaced, replace one blade at a time, so that the initial helical layout is maintained (picture 15).



HOW TO ORDER SPARE PARTS

For spare parts requests please refer to our spare parts catalog.

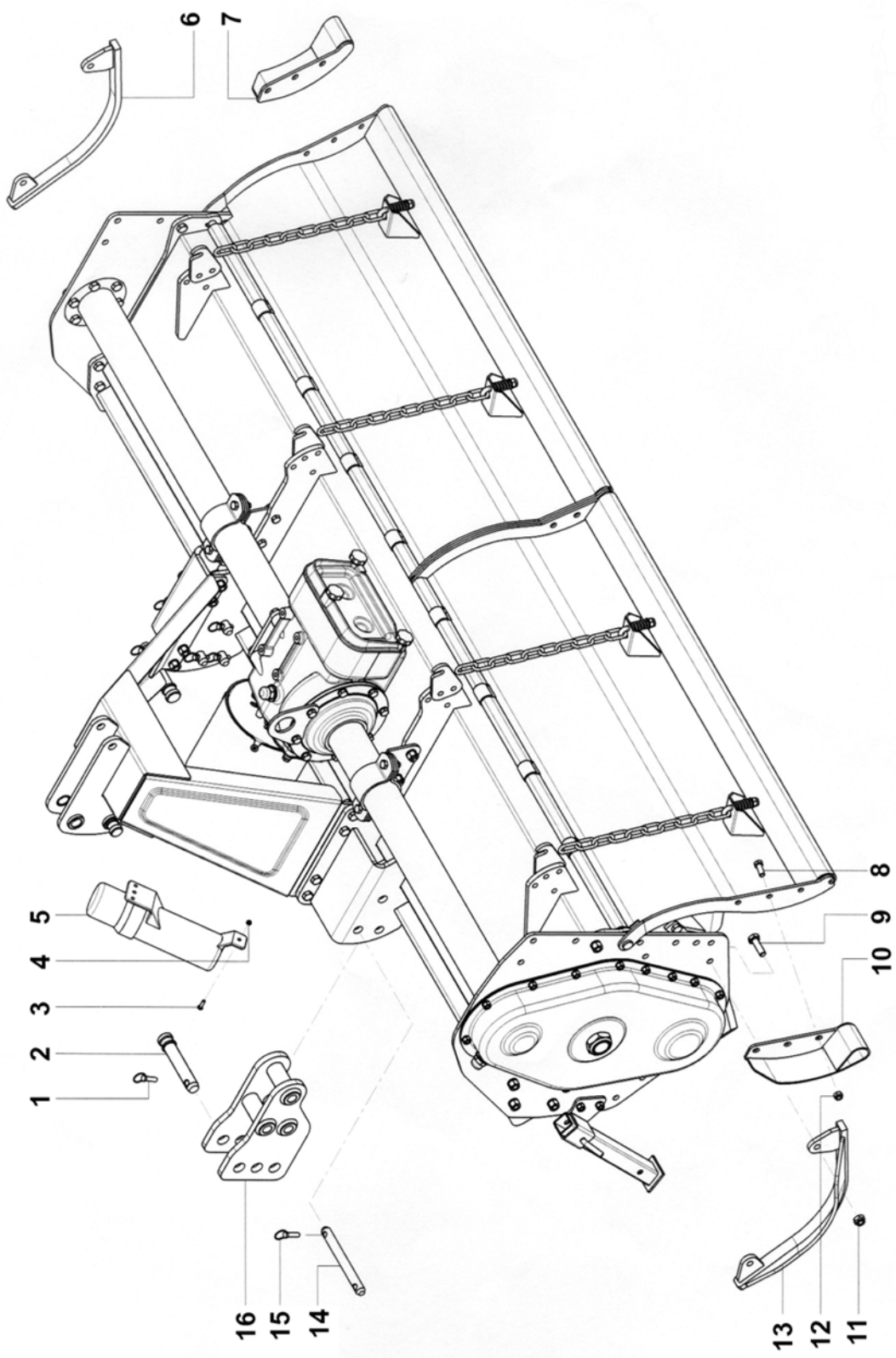
The spare parts can be ordered from the dealer or service center. The following data must always be specified:

- Equipment type and width.
- Part number of the requested component. If the code number is missing, indicate the table number in which it is shown and the relevant reference.
- Description of the part and requested quantity.
- Requested type of transport. Should this information not be provided, the dealer or service center shall not be responsible for delays caused by circumstances beyond their control. The addressee shall be responsible for any transport charges.

TROUBLESHOOTING CHART

PROBLEM	CAUSE	SOLUTION
Excessive vibration	Drive shaft damaged	Replace worn drive shaft
	Tines broken off	Replace damaged tines
	Bent rotor shaft	Replace rotor shaft
Rotor shaft does not turn	PTO Clutch slipping	Check slip clutch adjustment
		Replace clutch discs
Tilling deeper on one side	Tractor lower lift arm out of adjustment	Adjust lift arm
	Tiller depth skid not properly adjusted	Adjust skids to level depth
Tiller bouncing	Trying to go too deep on first pass	Raise tiller so tilling 3" deep
	Tractor in too high a gear	Tiller runs smoother in first or second gear
Leaving tire tracks	Tires set out too wide	Set in tractor tires
	Tractor too large	Offset tiller to cover right tire tracks
PTO will not untelescope	Improper lubrication	Separate and grease both halves
	PTO twisted	Replace twisted parts
	Shields damaged	Replace shields

SPARE PARTS UPDATE



SPARE PARTS UPDATE

<u>REF#</u>	<u>QTY.</u>	<u>PART NO.</u>	<u>DESCRIPTION</u>
1	1	6350010	Lynch Pin 10
2	1	5304434	Lower 3rd Point Hitch Pin 28
3	1	3021108020	Bolt M8 x 20 UNI 5739
4	2	3464101008	Stop Nut M8 UNI 7473
5	1	6601601	Canister
6	14	4014415	Side Skid R/H
7	36	4014418	Tailboard Extension R/H
8	1	3021112025	Bolt M12 x 25 UNI 5739
9	40	3031114055	Bolt M14 x 55 UNI 5738
10	4	4014419	Tailboard Extension L/H
11	1	3464101014	Stop Nut M14 UNI 7473
12	1	3464101012	Stop Nut M12 UNI 7473
13	1	4014416	Side Skid L/H
14	1	4304202	Pin
15	1	6350010	Lynch Pin 10
16	1	4014417	Fixed 3rd Lower Point Arm

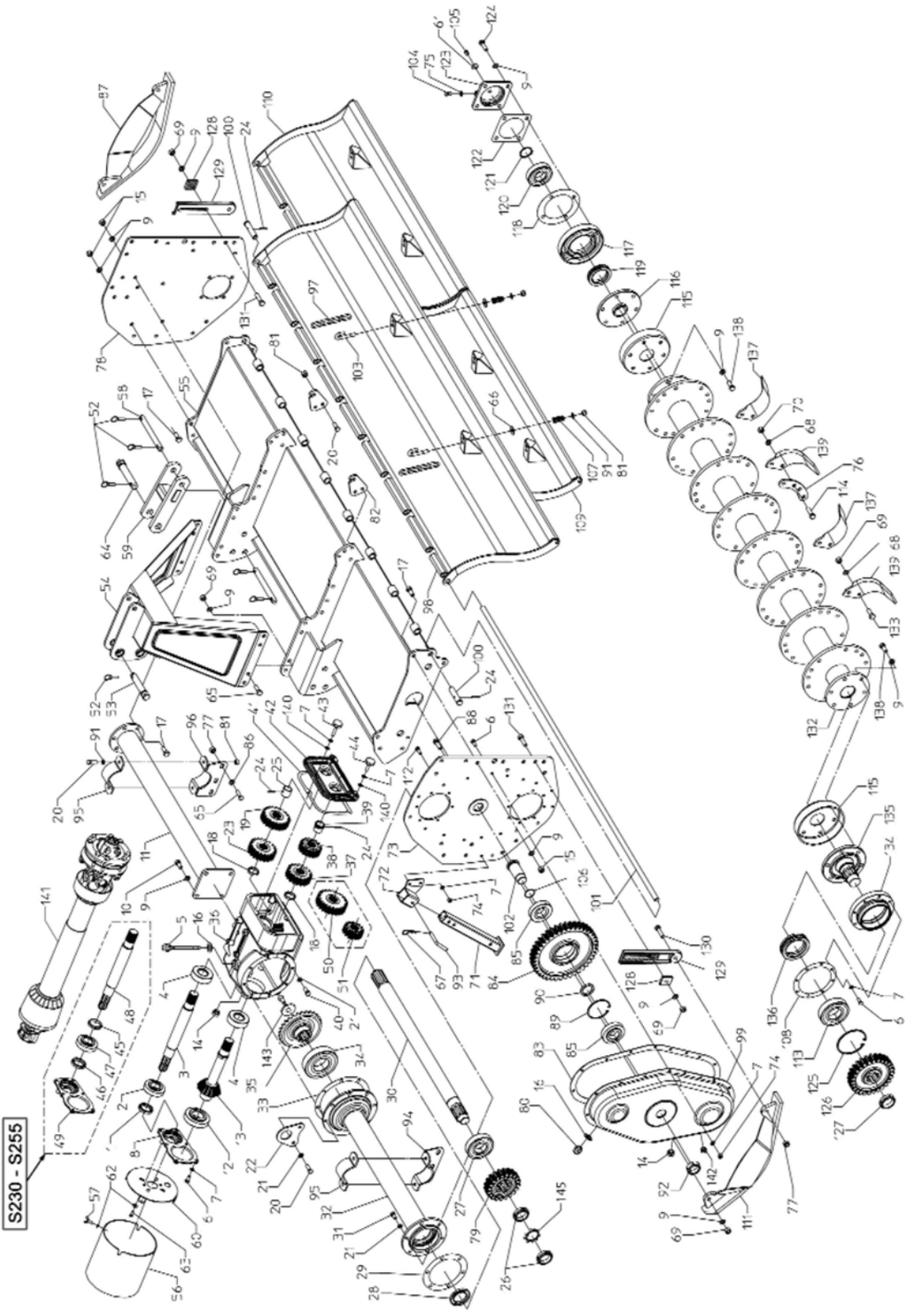
SPECIAL NOTE (For 2016):

Item no. 16 (4014417) Lower 3-point hitch arm and hardware are standard equipment on all "S" Series Tillers.

Items no. 6, 7, 10, & 13 - All standard equipment on the **S255 ONLY**

22	5734657	Lifting Hook
23	4224236	Gear Z=21
24	6330633	Split Pin 6 x 35
25	4554853	Gear Guide Pin
26	34006045	Metal Ring M4
27	30311	Bearing 30311
28	55x90x10	Oil Seal 55 x 9
29	4784734	Gasket
30	4214301	Shaft S160
30	4214302	Shaft S180
30	4214303	Shaft S200
30	4214304	Shaft S230
30	4214305	Shaft S255
31	31512025	Bolt M12 x 1.75 UNI 5739
32	4004811	Drive Side Supp
32	4004812	Drive Side Supp
32	4004813	Drive Side Supp
32	4004814	Drive Side Supp

"S" TILLER ASSEMBLY



TILLER ASSEMBLY

<u>REF#</u>	<u>QTY.</u>	<u>PART NO.</u>	<u>DESCRIPTION</u>
1	1	40x62x10	Oil Seal 40 x 62 x 10 S160 through S205
2	1	30308	Bearing S160 through S205
3	1	4224252	PTO Shaft S160 through S205
4	2	32308	Bearing 32308
5	1	3443022	Plug M22 x 1.5
6	14	31510025	Bolt M10 x 1.5 x 25 UNI 5739
7	36	34121010	Washer 10 UNI 1751
8	1	4644260	Holder Oil Seal Cover S160 through S205
9	40	34121014	Washer 14 UNI 1751
10	4	31514030	Bolt M14 x 2 x 30 UNI 5739
11	1	4004360	External Support S160
11	1	4004361	External Support S180
11	1	4004362	External Support S205
11	1	4004363	External Support S230
11	1	4004364	External Support S255
12	1	30310	Bearing 30310
13	1	4724251	Bevel Pinion Z=14
14	2	3441022	Oil Plug M22 x 1.5
15	19	34101014	Nut M14 x 1.5 UNI 5587
16	2	6470118	Washer
17	19	31614035	Bolt M14 x 1.5 x 35 UNI 5740
18	2	4593264	Spacer 40 x 48 x 10
19	1	4224257	Gear Z=23
20	As Req'd	31512035	Bolt M12 x 1.75 x 35 UNI 5739
21	14	34121012	Washer 12 UNI 1751
22	1	4934657	Lifting Hook
23	1	4224256	Gear Z=21
24	4	6330635	Split Pin 6 x 35
25	1	4534263	Gear Guide Pipe
26	2	34008045	Metal Ring M45 x 1.5
27	1	30311	Bearing 30311
28	1	55x90x10	Oil Seal 55 x 90 x10
29	1	4784734	Gasket
30	1	4214301	Shaft S160
30	1	4214302	Shaft S180
30	1	4214303	Shaft S205
30	1	4214304	Shaft S230
30	1	4214305	Shaft S255
31	6	31512025	Bolt M12 x 1.75 x 25 UNI 5739
32	1	4004811	Drive Side Support S160
32	1	4004812	Drive Side Support S180
32	1	4004813	Drive Side Support S205
32	1	4004814	Drive Side Support S230

TILLER ASSEMBLY

<u>REF#</u>	<u>QTY.</u>	<u>PART NO.</u>	<u>DESCRIPTION</u>
32	1	4004815	Drive Side Support S255
33	1	4784825	Gasket
34	1	30214	Bearing 30214
35	1	4724833	Ring Bevel Gear Z=29
36	1	4654250	Gearbox
37	1	4224255	Gear Z=19
38	1	4224254	Gear Z=17
39	1	4534262	Gear Guide Pipe
40	8	31512030	Bolt M12 x 1.75 x 30 UNI 5739
41	1	4784264	Gasket
42	1	4674261	Cover
43	1	6601055	Knob M10 x 55
44	2	6601035	Knob M10 x 35
45	1	4594216	Spacer S255 50 x 60 x 10
46	1	45x62x10	Oil Seal 45 x 62 x 10 S255
47	1	32210	Bearing 32210 S255
48	1	4224259	Shaft S230/S255 1-3/4 6 Spline
49	1	4644261	Cover S255
50	1	4224258	Gear Z=25 Optional 1000 RPM
51	1	4224253	Gear Z=15 Optional 1000 RPM
52	11	6350010	Lynch Pin D10
53	1	5304435	Pin
54	1	4004297	Junction for 3rd Point
55	1	4104270	Frame S160 (gear drive)
55	1	4104271	Frame S180 (gear drive)
55	1	4104272	Frame S205 (gear drive)
55	1	4104273	Frame S230 (gear drive)
55	1	4104274	Frame S255 (gear drive)
56	1	6654241	Protecting Cover
57	3	33108020	Bolt M8 x 1.25 x 20 UNI 5449
58	4	4304202	Pin
59	2	4004298	Plate 3rd Point
60	1	4934240	Guard Support
61	1	6470114	Washer
62	5	34118008	Washer UNI 6593
63	2	31508016	Bolt M8 x 1.25 x 16 UNI 5739
64	1	5304434	Lower 3rd Point Hitch Pin
65	12	31614040	Bolt M14 x 1.5 x 40 UNI 5740
66	As Req'd	34118012	Washer
67	1	6351003	Split Pin "R" 3 x 60
68	As Req'd	34132014	Washer FIAT 10188
69	As Req'd	34101014	Nut M14 UNI 5587
70	As Req'd	34101914	Nut M14 PF UNI 5587

TILLER ASSEMBLY

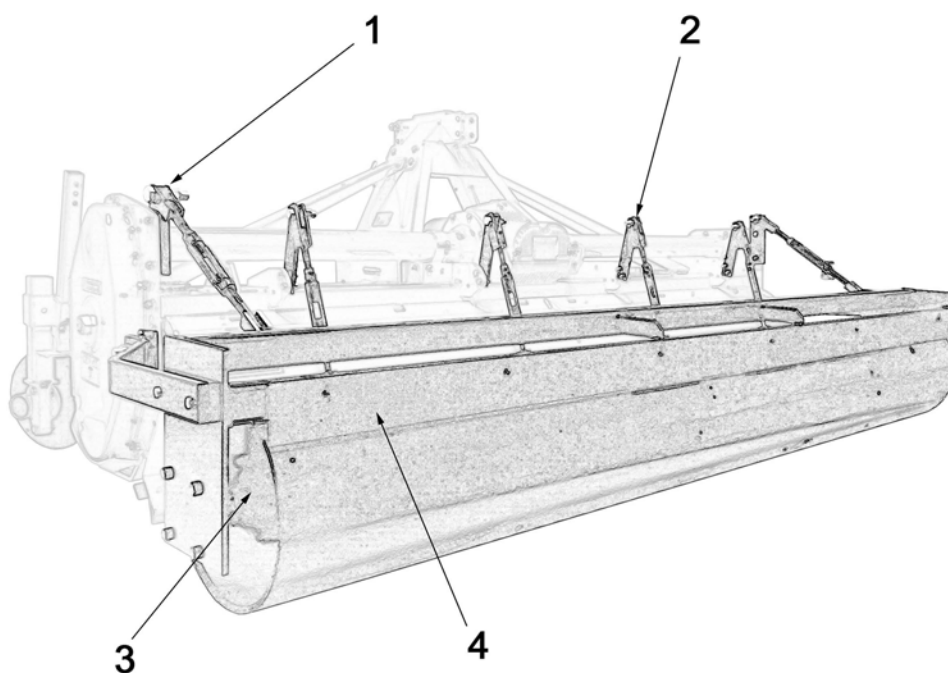
<u>REF#</u>	<u>QTY.</u>	<u>PART NO.</u>	<u>DESCRIPTION</u>
71	1	4002376	Parking Stand
72	1	4002377	Parking Stand Support
73	1	4004803	Gearing Side Plate
74	19	34100010	Nut M10 UNI 5587
75	1	6470112	Washer
76	As Req'd	4934019	Counterflanges For Blades (Optional)
77	6	34107014	Stop Nut M14
78	1	4934223	External Side Plate
79	1	4724886	Driving Gear Z=20
80	1	3442022	Plug M22 x 1.5
81	As Req'd	34106012	Self Locking Nut M12
82	As Req'd	4934778	Chain Plate
83	1	4784801	Gasket
84	1	4724887	Intermediate Gear Z=41
85	2	30309	Bearing 30309
86	4	34120014	Washer 14
87	1	4004431	Right Skid
88	2	31414045	Bolt Bolt M14 x 1.5 x 45 Length 20
89	1	472100	Circlip I100 Internal
90	1	4594230	Spacer
91	As Req'd	34120012	Washer 12 UNI 6592
92	1	34109033	Self Locking Nut M33 MB UNI 7474
93	1	4236115	Pin, Parking Stand Lock
94	1	4004529	Support, Extension Clamping (LH)
95	2	4834518	U-bolt
96	1	4004530	Support, Extension Clamping (RH)
97	As Req'd	4508001	Chain
98	1	4004280	Bonnet S160
98	1	4004281	Bonnet S180
98	1	4004282	Bonnet S205
99	1	4004804	Cover
100	2	4232111	Cover Side Pin
101	1	4232106	Bonnet Pin S160
101	1	4232107	Bonnet Pin S180
101	1	4232108	Bonnet Pin S205
101	1	4237901	Bonnet Pin S230
101	1	4234201	Bonnet Pin S255
102	1	4204801	Pin
103	As Req'd	4302183	Chain Hook
104	1	31510010	Bolt M10 x 1.5 x 16 UNI 5739
105	1	3444014	Oil Level Plug
106	1	6836220	Gasket O.R. 220
107	As Req'd	4212214	Spring
108	1	4784635	Gasket

TILLER ASSEMBLY

<u>REF#</u>	<u>QTY.</u>	<u>PART NO.</u>	<u>DESCRIPTION</u>
109	1	4004289	Left Bonnet S230
109	1	4004290	Left Bonnet S255
110	1	4004287	Right Bonnet S230
110	1	4004288	Right Bonnet S255
111	1	4004430	Left Skid
112	2	31510030	Bolt M10 x 1.5 x 30 UNI 5739
113	1	21312	Bearing
114	As Req'd	31414950	Bolt M14 x 1.5 x 50 UNI 5738
115	2	4144201	Dust Cover
116	1	4704006	Hub Right Side
117	1	4644005	Bearing Support
118	1	4784117	Hub Gasket Right Side
119	1	6203911	Oil Seal GNL 6460 74 x 94 x 20
120	1	6310	Bearing 6310
121	1	47150	Circlip E50
122	1	4784118	Gasket
123	1	4644001	Cover Right Side
124	4	31514045	Bolt M14 x 2 x 45 UNI 5739
125	1	6310130	Circlip for Bores 130
126	1	4724888	Gear Z=27
127	1	34127055	Self Locking Metal Ring M50 x 1.5 GUP
128	2	4704654	Plate, Rod Adjustment
129	2	4704653	Skid Adjusting Rod
130	2	31414055	Bolt M14 x 1.5 x 55 UNI 5738
131	2	31414050	Bolt M14 x 1.5 x 50 UNI 5738
132	1	4004370	Rotor S160
132	1	4004371	Rotor S180
132	1	4004372	Rotor S205
132	1	4004373	Rotor S230
132	1	4004374	Rotor S255
133	As Req'd	31414040	Bolt M14 x 1.5 x 40 Length 20
134	1	4704009	Pipeline Gear Support
135	1	4724008	Pipe Gear Support Hub
136	1	6200750	Oil Seal GNL FT.750
137	As Req'd	4814004	Right Blade
137A	As Req'd	4814006	Right Hand Tungsten Coated Blade
138	12	31514035	Bolt M14 x 2 x 35 UNI 5739
139	As Req'd	4814005	Left Blade
139A	As Req'd	4814007	Left Hand Tungsten Coated Blade
140	3	34120010	Washer
141	1	EYE81064-2254	Driveline S160 - S205 1 3/8 6 Spline Clutch
141	1	EYE81074-2255	Driveline S230 - S255 1 3/4 6 Spline Clutch
142	1	3441014	Oil Plug M14 x 1.5
143	1	4934311	Special Washer 14
144	1	30614035	Bolt M14 x 2 x 35 UNI 5733
145	1	34031045	Wsher MB M45 DIN 5406

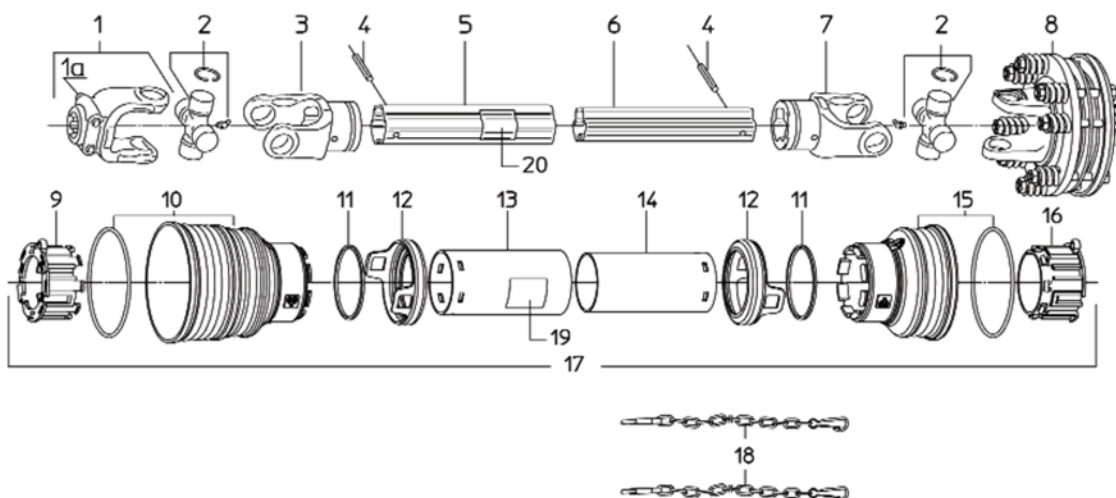
TILLER ROLLER ASSEMBLY

(Optional Rear Roller)



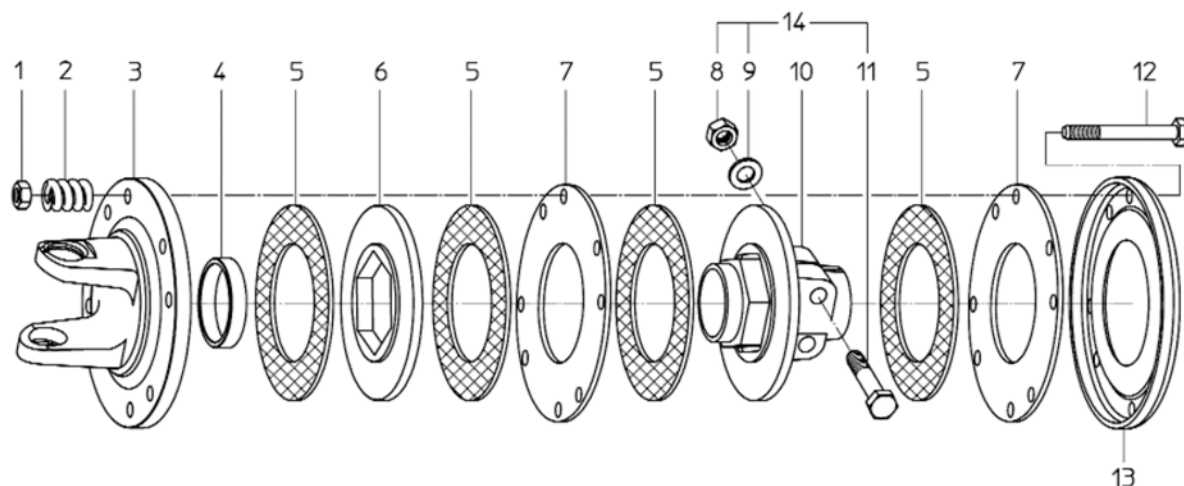
<u>REF#</u>	<u>QTY.</u>	<u>PART NO.</u>	<u>DESCRIPTION</u>
1	2	T2000	Turnbuckle Roller
2	4	T2001	Turnbuckle Tailboard
3	2	T2002	Bearing, Roller
4	1	T2003	Mud Scraper Bar

DRIVESHAFT ASSEMBLY



<u>REF#</u>	<u>QTY.</u>	<u>PART NO.</u>	<u>DESCRIPTION</u>
1	1	1028010	Yoke Assembly
1A	2	1581038	Push Pin Kit
2	2	1008020	Cross Assembly
3	1	1708067	Outer Tube Yoke
4	2	6331090	10 x 90 Elastic Pin
5	1	1818045	Outer Tube S160, S180, S205 & S230
5	1	1818055	Outer Tube S255
6	1	1817045	Inner Tube S160, S180, S205 & S230
6	1	1817055	Inner Tube S255
7	1	1708069	Inner Tube Yoke
8	1	1468031	Torque Limiter S160, S180 & S205
8	1	1448032	Torque Limiter S230 & S255
9	1	1788010	Tube Bearing Outer Tube
10	1	1788003	Standard Cone
11	2	1218035	Stop Ring
12	2	1888009	Safety Coupling
13	1	1778034	Outer Tube Shield S160, S180, S205 & S230
13	1	1778044	Outer Tube Shield S255
14	1	1879034	Inner Tube Shield S160, S180, S205 & S230
14	1	1879044	Inner Tube Shield S255
15	1	1788002	Short Cone
16	1	1788011	Tube Bearing Inner Tube
17	1	90SS8034	Complete Protection S160, S180, S205 & S230
17	1	90SS8044	Complete Protection S255
18	2	1006065	Anti-Rotation Chain
19	1	1140010	Outer Decal
20	1	1140011	Inner Decal

SLIP CLUTCH ASSEMBLY



<u>REF#</u>	<u>QTY.</u>	<u>PART NO.</u>	<u>DESCRIPTION</u>
1	8	6411010	Lock Nut
2	8	1215012	Spring
3	1	1708006	Flange With Yoke
4	1	1705009	Bushing
5	4	1808010	Friction Disc
6	1	1708034	Middle Plate Hex
7	2	1138008	Inner Plate Round
8	2	6410112	Screw Nut S160, S180 & S205
8	2	6410114	Screw Nut S230 & S255
9	2	6412112	Spring Washer S160, S180 & S205
9	2	6412114	Spring Washer S230 & S255
10	1	1708018	Hub With Flange 1 3/8 6-Spline S160, S180 & S205
10	1	1708019	Hub With Flange 1 3/4 6-Spline S230 & S255
11	2	6141270	Bolt S160, S180 & S205
11	2	6141480	Bolt S230 & S255
12	8	6001010	Bolt For Spring
13	1	1138007	Cover Plate
14	2	6761270	Locking Bolt Kit S160, S180 & S205
14	2	6761480	Locking Bolt Kit S230 & S255

LIMITED WARRANTY



GEARMORE, INC., warrants each new Gearmore product to be free from defects in material and workmanship for a period of twelve (12) months from date of purchase to the original purchaser. This warranty shall not apply to implements or parts that have been subject to misuse, negligence, accident, or that have been altered in any way.

Our obligation shall be limited to repairing or replacement of any part, provided that such part is returned within thirty (30) days from date of failure to Gearmore through the dealer from whom the purchase was made, transportation charges prepaid.

This warranty shall not be interpreted to render us liable for injury or damages of any kind or nature, direct, consequential or contingent, to person or property. This warranty does not extend to loss of crops, loss because of delay in harvesting or any other expenses, for any other reasons.

Gearmore in no way warrants engines, tires, or other trade accessories, since these items are warranted separately by these respective manufacturers.

Gearmore reserves the right to make improvements in design or changes in specification at any time, without incurring any obligations to owners or units previously sold.

GEARMORE, INC.
13477 Benson Ave.
Chino, CA 91710

Always refer to and heed machine operating warning decals on machine.

The serial number of this product is stored in our computer database, thus submitting a warranty registration card is not required.