



FLAIL MOWERS "SFG" SERIES

CENTER MOUNT, OFFSET MECHANICAL OR HYDRAULIC



**CAT I
A. S. A. E.
QUICK
HITCH
COMPATIBLE**

Our SFG Series of flail mower/shredders feature fixed center mount, manual or hydraulic side shift. The narrow shredders are fixed center mount. The two largest shredders are manual offset, return to center with optional hydraulic offset. Two style of blades can be purchased, hammer knives or double Y blades. These blades are also interchangeable on the same shredders. The low profile design of the machine aids when working in tight areas. These are popular mowers in vineyards, berries, roadsides, weed abatement, rental yards, etc.



13477 Benson Ave. • Chino, CA 91710
Ph: 909/548-4848 • Fax: 909/548-4747

www.gearmore.com • sales@gearmore.com



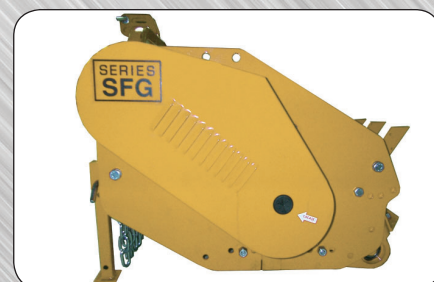
FLAIL MOWER/SHREDDERS SFG SERIES

FEATURES:

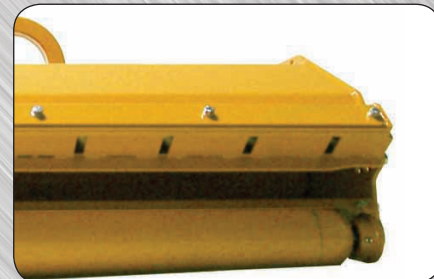
- Cat. 1 ASAE quick hitch, 540 RPM tractors
- Fixed center mount hitch, except SFG185/200
- 70 HP gearbox with built-in overrunning clutch
- Low profile belt housing, 23" high for clearance
- Hammer knives shreds brush and prunings up to 2" dia
- Double Y Blades mow weeds & light brush up to 1" dia.
- Cutting height adjusts from 1" to 4" above ground
- Rotor speed - 2200 RPM
- Two rows of heat treated re-cutter blades
- Rear hatch adjusts for various types of mowing
- Rear hatch slotted for rake teeth
- Balanced 5 1/2" rotor tubing
- 5 1/2" Diameter rear roller adjusts vertically and horizontally
- 4 Belt final drive with fixed belt tensioner to provide maximum power to the rotor
- Series 6 PTO driveshaft
- Front mounted safety chain, rear rubber deflector
- Dual parking stands



Rotorshaft, hammer knives and re-cutter blades



Low profile belt housing for operating in close areas

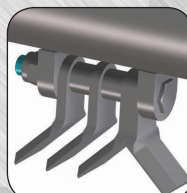


Adj. rear hatch, open for mowing grass & weeds, closed for brush

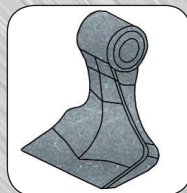
OPTIONS:

- ~ Rake Teeth

Your Gearmore Dealer



Double Y Blade



Hammer Knife

SPECIFICATIONS:

MODEL NUMBER	WORKING WIDTH	OVERALL WIDTH	MAXIMUM OFFSET*	NO. OF HAMMERS	NO. OF Y BLADES	H.P. REQ'D	RAKE SLOTS	MACHINE WT.
SFG95	38"	43"	-	8	32	20	6	660#
SFG125	49"	55"	-	8	32	25	8	770#
SFG140	55"	61"	-	10	40	30	9	810#
SFG155	61"	67"	-	10	40	35	10	880#
SFG185*	73"	78"	44"	12	48	40	12	1005#
SFG200*	79"	84"	48"	14	56	45	13	1100#

* These shredders come with manual offset, hydraulic offset is optional. Offset shown is the maximum offset from centerline of tractor to the right

Specifications Subject To Change Without Notice

13477 Benson Ave. • Chino, CA 91710 • Ph: 909/548-4848 • Fax: 909/548-4747