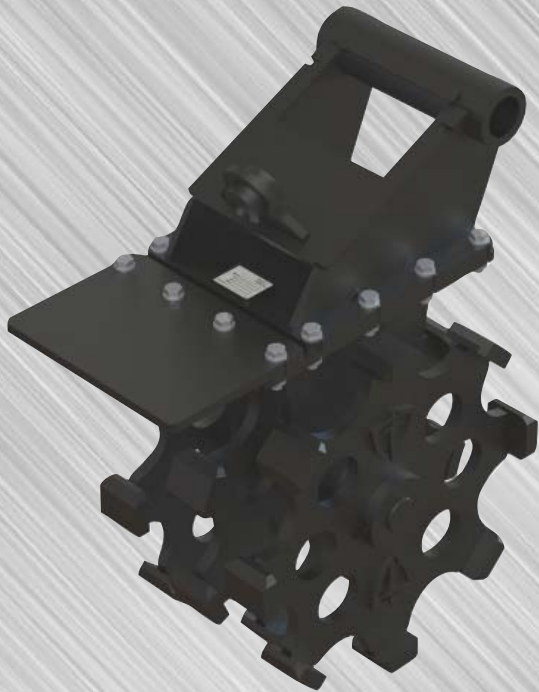




# WHEEL COMPACTORS

## FOR SMALL EXCAVATORS AND BACKHOES



**SHOWN WITH  
OPTIONAL SCRAPER BLADE**

*Paladin boom mounted TWC Compaction Wheels* provide a cost effective, durable, and user friendly compaction method for use in most soils and trench conditions. Strikeforce TWC Compaction Wheels are very effective in consolidating and condensing clay or fine mechanically stable (separates with difficulty) soils where other compaction means are ineffective. The TWC uses the machine force to compress columns of soil to achieve overall compaction and unlike other compaction means this can be done in watery soil conditions.

The Strikeforce TWC family of Compaction Wheels includes advanced design features to maximize life and minimize maintenance cost, maximizing your return on investment. TWC Compaction Wheels do not require hydraulic connections with your machine protecting your primary investment, and require only minimal periodic maintenance to keep the product operational for years to come.

### FEATURES:

- Extended compaction pad life through use of abrasion resistant Hardox 450 material
- Enhanced durability through the use of an oversized axle shaft and large diameter bearings to minimize contact loads and lubrication requirement
- Fully protected grease locations for use in abusive environments. These are not susceptible to damage in typical work environment as with competitor designs

### SPECIFICATIONS:

	Mini-Excavators		Backhoe and Small Excavator		
	TWC500-12	TWC500-18	TWC1000-12	TWC 1000-18	TWC 1000-24
Trench Width (in)	12"	18"	12"	18"	24"
No. of Rims	2	3	2	3	4
Weight (lb.)	320 lbs.	460 lbs.	520 lbs.	740 lbs.	980 lbs.
Op Weight (lb.)*	520 lbs.	660 lbs.	750 lbs.	970 lbs.	1210 lbs.
Wheel Dia. (in)	22"	22"	28"	28"	28"
Shaft Dia. (in)	2.36"	2.36"	2.75"	2.75"	275"
Min. Machine (lb.)	2700		13000		
Max. Machine (lb.)	14000		38000		
Machine Class (mT)	3T / 6T		8T / 12T		
<i>*Approximate only. Actual weight will depend on installation and accessories.</i>					

- Minimized maintenance through use of a large diameter greased zinc alloy bearing requires minimal maintenance and protects the axle shaft and housings from damage
- All compaction wheels can be ordered with the optional scraper blade, and an adaptor bracket to suit your machine

**Marketed by:**



Form #PA0004-19

13477 Benson Ave. • Chino, CA 91710  
Ph: 909/548-4848 • Fax: 909/548-4747

[www.gearmore.com](http://www.gearmore.com) • [sales@gearmore.com](mailto:sales@gearmore.com)