



VENTURI AIR SPRAYERS

**Parts Manual For
Model P50N1/P50S1-400-G
& P50N1/P50S1-600-G
3-Pt. Mount**

August 2001

TABLE OF CONTENTS

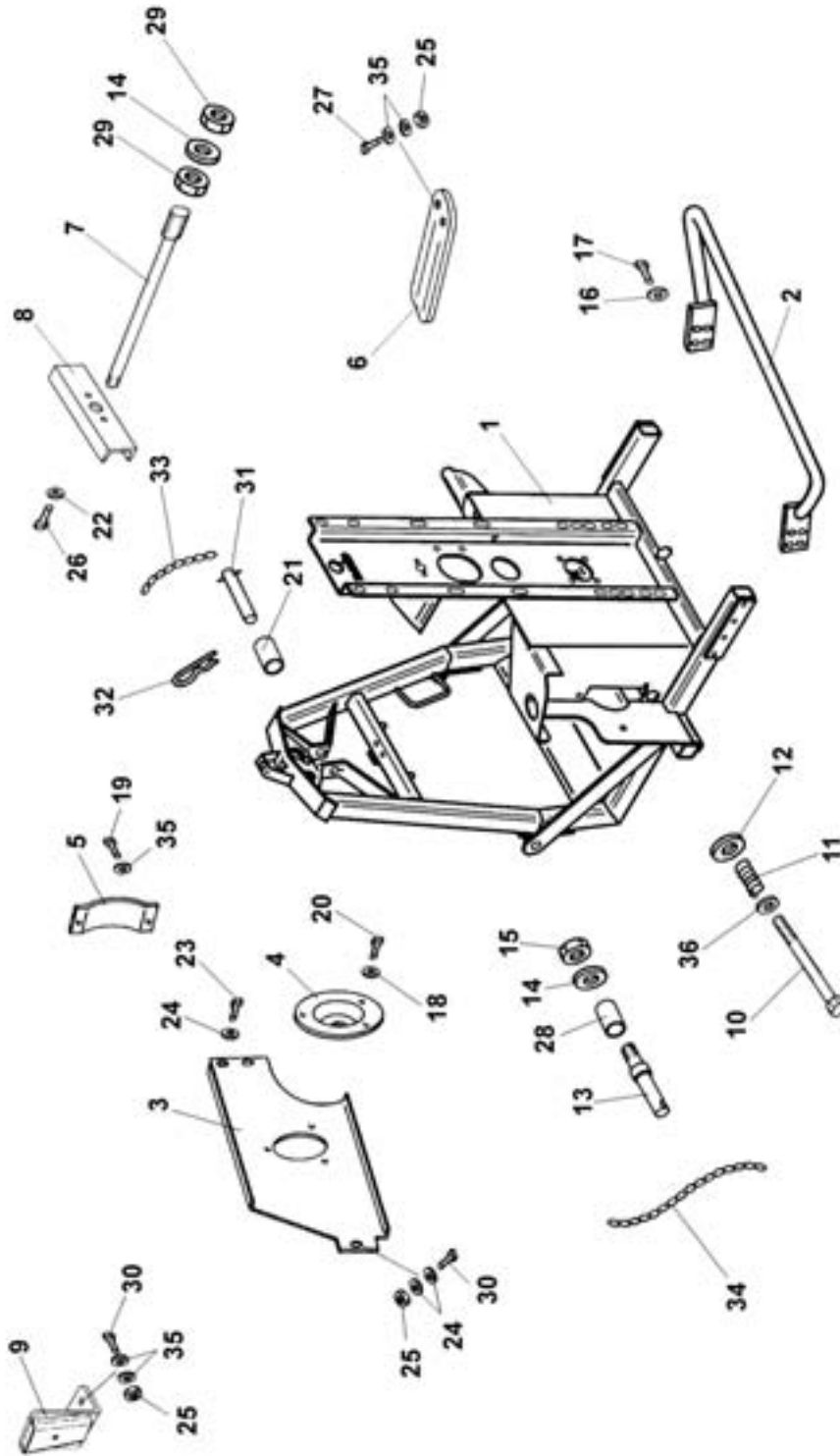
Main Frame	1-2
Agitation & Tank	3-5
Fan Assembly	6
Fan support, Belt Stretcher & Complete Fan Support	7-8
Clutch & Pulley Assembly	9-10
Liquid Flow Path	11-13
Inline Filter Assembly	14
Pump & Tension Pulley Assembly	15-16
Fan Support	17
Dial - A - Rate	18
Manually Operated Valve & Manual Command Group 2-Way	19-20
Solenoid Control Valve	21-22
Optional Control Box	23
PTO Driveshaft	24
Limited Warranty	25

Date of Purchase:_____

Model Number:_____

Serial Number:_____

FRAME ASSEMBLY



FRAME ASSEMBLY

<u>REF#</u>	<u>QTY.</u>	<u>PART NO.</u>	<u>DESCRIPTION</u>
1	1	50.104.000	Main Frame
2	1	40.000.000	Rear Bumper
3	1	50.105.000	Plate, Front
4	1	20.434.000	Cover
5	1	20.743.000	Cover Plate
6	1	20.744.000	Bracket
7	1	20.754.101	Rod, Tank Retaining
8	1	20.737.101	Support Plate
9	1	20.766.000	Support Plate
10	1	20.738.000	Bolt, Belt Stretcher
11	1	02.964.000	Spring
12	1	02.140.003	Washer
13	2	40.201.000	Lift Pin
14	3	RD.022.000	Washer D.22
15	2	DI.22.5593F	Nut M22
16	4	RP.010.000	Washer D.10
17	4	TE.010.025T	Bolt M10 x 25
18	3	RP.006.018	Washer D.18
19	2	TE.008.016T	Bolt M8 x 16
20	3	TE.006.016T	Bolt M6 x 16
21	1	20.778.000	Bushing
22	2	RD.008.000	Washer D.8
23	2	TE.008.012T	Bolt M8 x 12
24	4	RP.008.024	Washer D.8 x 24
25	5	DO.08.5588G	Nut M8
26	2	TE.008.035T	Bolt M8 x 35
27	2	TE.010.070	Bolt M10 x 70
28	2	20.043.000	Bushing
29	2	DO.22.5588F	Nut M22
30	3	TE.008.025T	Bolt M8 x25
31	1	04.076.000	Pin
32	1	00.100.004	Hair Pin
33	2	02.278.001	Chain D2.2 x 16"
34	2	02.278.001	Chain D2.2 x 24"
35	10	RP.008.000	Washer
36	1	RP.012.000	Washer D.12

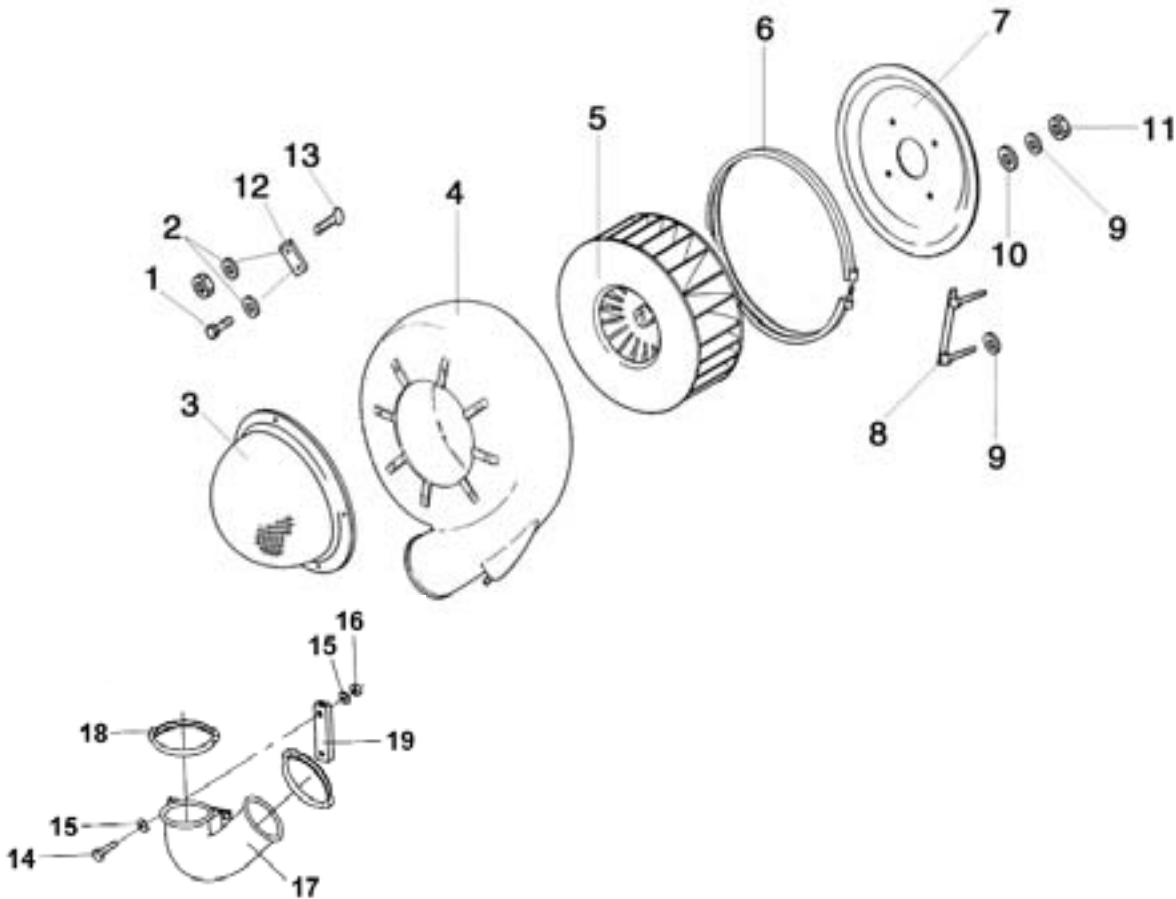
AGITATION & TANK

<u>REF#</u>	<u>QTY.</u>	<u>PART NO.</u>	<u>DESCRIPTION</u>
1	1	40.219.002	Tank 100 Gal. s/n 010099 - -----
1	1	40.220.002	Tank 150 Gal. s/n 010099 - -----
2	1	00.542.000	Back Nut
3	1	20.749.000	Support Plate
4	1	DA.010.0AG	Nut M10 x 1.5
5	1	RP.010.030	Washer D.10 x 30
6	2	20.436.000	Rubber Washer D.6
7	1	02.497.000	Ball Valve
8	1	02.380.000	Nipple
9	1	02.298.000	Basket, Strainer
10	1	02.476.000	Lid D.255
11	2	02.458.000	Ring Nut
12	2	OR2022353	O-Ring 20.22 x 3.53
13	1	02.482.000	Hosetail
14	1	02.457.000	Hosetail 90°
15	2	F0.008.016I	Clamp D.8/16
16	1	02.478.000	Floating Ball D.9.5
17	1	02.378.000	Gauge Hose L=850
18	1	00.587.000	Nipple
19	1	02.066.000	Gasket 33 x 45 x 3
20	As Req'd	02.215.000	Hose D.25 Per Foot
21	2	02.032.000	Gasket 26 x 40 x 2
22	1	00.541.000	Back Nut
23	1	02.135.000	Piston
24	2	F0.014.024	Clamp D.14/24
25	As Req'd	02.372.000	Hose D.19 Per Foot
26	As Req'd	02.212.000	Hose D.19 Per Foot
27	As Req'd	02.420.000	Hose D.20 Per Foot
28	1	20.798.075	Hose D.25 x 33 L=750
29	3	00.055.242	Nut
30	2	00.055.027	Hosetail
31	1	00.055.034	Nipple
32	1	00.373.000	Sleeve
33	1	00.131.000	Shower Head
34	1	00.646.010	Basket, Strainer
35	1	00.345.000	Nipple
36	1	02.033.000	Gasket 42 x 55 x 3
37	1	00.543.000	Nut
38	1	00.058.004	Hosetail D.30
39	1	20.770.047	Hose D.25 L=470
40	2	00.058.006	Cap Nut

AGITATION & TANK

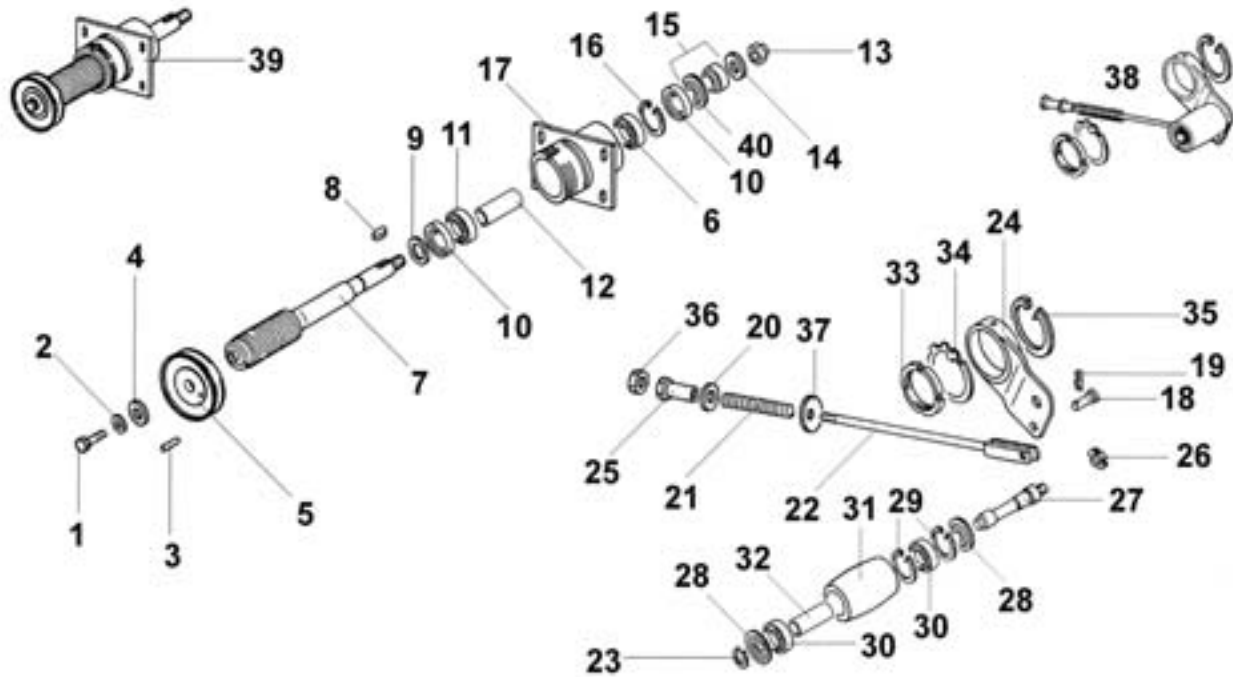
<u>REF#</u>	<u>QTY.</u>	<u>PART NO.</u>	<u>DESCRIPTION</u>
41	1	20.793.000	Nipple
42	1	OR.003.106	O-Ring 26.64 x 2.62
43	1	OR.003.112	O-Ring 28.24 x 2.62
44	3	F0.025.040I	Clamp D.25/40
45	2	02.374.000	Reducer
46	2	OR.000.508	O-Ring 30 x 3
47	2	OR2381262	O-Ring 23.81 x 2.62
48	1	00.058.028	Nipple
49	1	00.493.000	Nut
50	1	20.787.000	Main Lid Assembly
51	1	00.055.021	Hose Barb D.25
52	1	02.447.300	Regulator Valve
53	1	2502041	Nipple 1" H=45/22
54	4	F0.023.035I	clamp 23/35

FAN ASSEMBLY



<u>REF#</u>	<u>QTY.</u>	<u>PART NO.</u>	<u>DESCRIPTION</u>
1	4	TE.006.016T	Bolt 6 x 10
2	8	RP.006.000	Washer D.6
3	1	05.654.100	Protection Cover
4	1	05.730.000	Fan Casing
5	1	05.732.000	Fan
6	1	05.731.000	Clamp D.535
7	1	05.729.000	Cover
8	2	20.088.000	Bracket For Back Cover
9	8	RP.010.030	Washer D.10 x 30
10	4	RP.010.040	Washer D.10 x 40
11	4	D0.10.5588G	Nut M10
12	4	05.654.101	Bracket
13	4	TS.006.016T	Bolt M6 x 16
14	2	TE.010.060T	Bolt M10 x 60
15	4	RP.010.000	Washer D.10
16	2	D0.10.5588G	Nut M10
17	1	04.882.000	Lower Elbow D.175
18	2	05.616.000	Clamp D.190
19	2	02.992.000	Bracket

FAN SUPPORT & BELT TENSIONER



<u>REF#</u>	<u>QTY.</u>	<u>PART NO.</u>	<u>DESCRIPTION</u>
1	1	TE.010.025FT	Bolt 10 x 25
2	1	RP.010.028	Washer D.10 x 28
3	1	SE.006.020	Spring Pin 6 x 20
4	1	RP.010.040	Washer D.10 x 40
5	1	02.723.000	Pulley D78 x 13
6	1	21307	Bearing
7	1	05.649.064.5	Shaft P50N
7	1	05.649.060	Sahft P50S
8	1	L.08.07.40	Key 8 x 7 x 40
9	1	05.716.000	Spacer
10	2	AL.STO.45.85	Seal
11	1	22208	Bearing
12	1	05.698.000	Spacer Tube

FAN SUPPORT

<u>REF#</u>	<u>QTY.</u>	<u>PART NO.</u>	<u>DESCRIPTION</u>
13	1	DA.022.0BF	Nut M22 x 1.5
14	1	RP.022.000	Washer D.22
15	1	05.714.000	Bushing
16	1	IO.080.000	Circlip I80
17	1	05.715.010	Housing

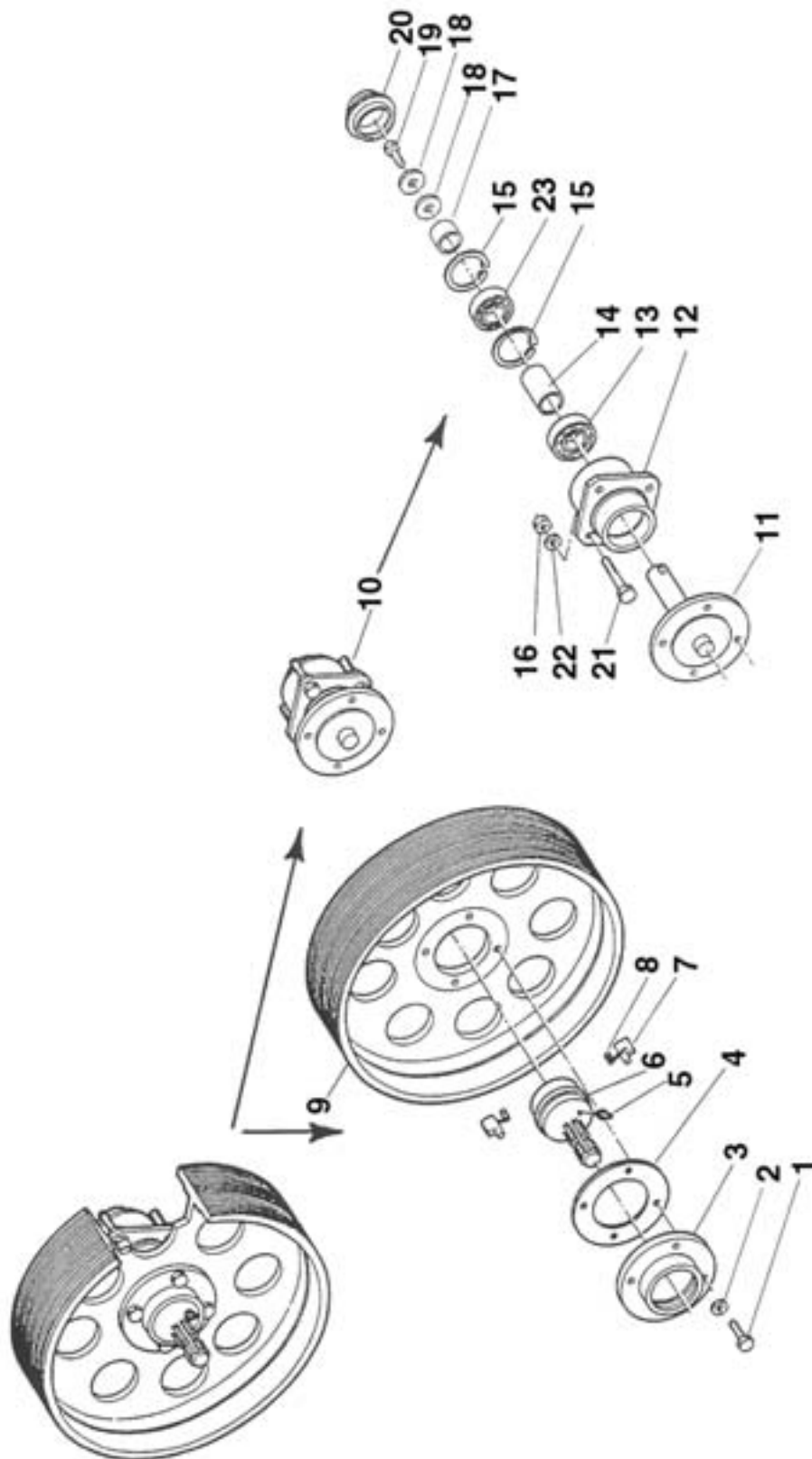
BELT STRETCHER

18	1	04.593.000	Pin
19	1	00.100.002	Clip
20	1	RP.019.000	Washer D.19
21	1	05.647.000	Spring
22	1	05.726.000	Rod, Adjustment
23	1	EO.025.000	Circlip E25
24	1	05.696.000	Belt Stretcher Housing
25	1	04.583.000	Screw Threaded Spacer
26	1	KM.005.000	Nut
27	1	05.697.000	Belt Stretcher Pin
28	2	04.585.000	Cover Seal
29	2	IO.052.000	Circlip I52
30	2	6205-2RS	Bearing
31	1	05.630.000	Roller
32	1	05.631.000	Spacer
33	1	05.704.000	Nut
34	1	MB.020.000	Washer
35	1	EO.100.000	Circlip E100
36	1	D0.12.5588G	Nut
37	1	20.260.000	Special Washer
38	1	05.707.000	Belt Stretcher Assy.

COMPLETE FAN SUPPORT

39	1	05.715.103C	Fan Support Assy.
----	---	-------------	-------------------

CLUTCH & PULLEY ASSEMBLY



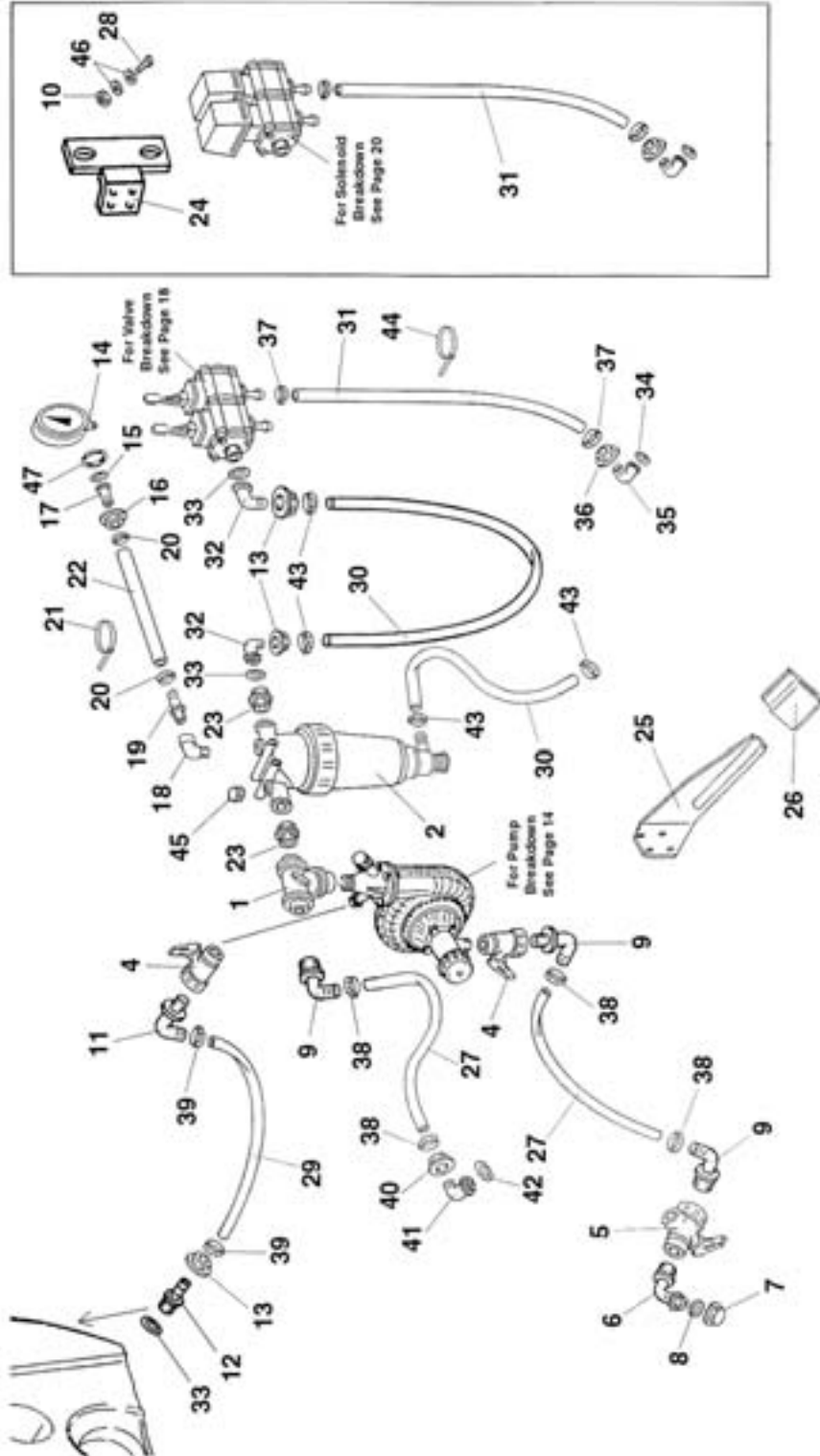
CLUTCH & PULLEY ASSEMBLY

<u>REF#</u>	<u>QTY.</u>	<u>PART NO.</u>	<u>DESCRIPTION</u>
1	4	TE.012.050F	Bolt M12 x 1.25 x 50
2	4	DO.12.5587F	Washer D.12
3	1	04.066.000	Body
4	1	04.719.000	Gasket
5	1	ID.010.001	Grease Nipple M10
6	1	03.701.000	Rotor
7	2	02.502.002	Key
8	2	02.502.001	Spring
9	1	00.480.J50	Pulley
10	1	05.632.01C	Clutch

CLUTCH ASSEMBLY

11	1	04.589.000	Shaft
12	1	05.632.000	Housing
13	1	6307-2RS	Bearing
14	1	04.565.000	Spacer
15	2	IO.072.000	Internal Circlip D.72
16	4	DO.12.5588G	Nut M12
17	1	04.590.000	Spacer
18	2	RP.012.036	Washer D.12 x 36
19	1	TE.012.025FT	Bolt M12 x 25
20	1	04.555.001	Hub Cover
21	4	TE.012.090	Bolt M12 x 90
22	4	RP.012.000	Washer D.10
23	1	6307-2RS	Bearing

LIQUID FLOW PATH WITH MANUAL CONTROL VALVES



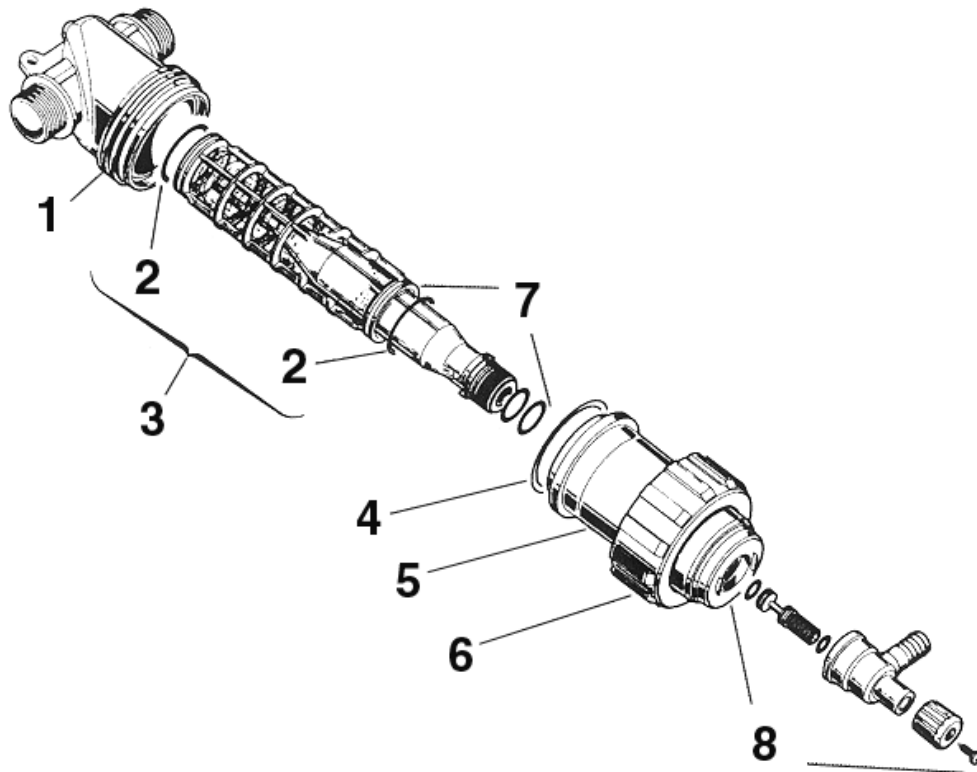
LIQUID FLOW PATH WITH MANUAL CONTROL VALVES

<u>REF#</u>	<u>QTY.</u>	<u>PART NO.</u>	<u>DESCRIPTION</u>
1	1	24.058.000	Ball Valve
2	1	02.450.020	Filter Assembly
4	2	04.109.000	Ball Valve
5	1	24.053.000	Ball Valve
6	1	02.292.000	Hosetail 90°
7	1	TF.001.100	Cap
8	1	02.265.000	Gasket 20 x 30 x 5
9	3	00.465.000	Hosetail 90°
10	2	D0.10.5588G	Nut M10
11	1	24.068.000	Elbow 90°
12	1	00.055.021	Hose Barb
13	3	00.055.24.2	Nut
14	1	02.445.000	Pressure Gauge
15	1	20.769.000	Gasket 19.2 x 11.5 x 2.5
16	1	02.287.000	Nut
17	1	02.379.020	Hosetail
18	1	20.172.000	Steel Elbow
19	1	00.414.000	Hosetail
20	2	F0.008.016I	Clamp D.8/16
21	2	02.354.000	Tie
22	As Req'd	02.213.000	Hose D.10 Per Foot
23	2	00.045.012	Nipple
24	1	20.741.000	Bracket
25	1	20.112.000	Bracket, Support
26	1	20.107.000	Pocket
27	As Req'd	02.238.000	Hose D.30 Per Foot
28	2	TE.010.030T	Bolt M10 x 30
29	As Req'd	02.219.000	Hose D.25 Per Foot
30	As Req'd	02.212.000	Hose D.19 Per Foot
31	As Req'd	02.211.000	Hose D.16 Per Foot
32	2	00.055.038	Elbow
33	3	OR.000.132	O-Ring 23.81 x 2.62
34	2	OR.000.121	O-Ring 15.88 x 2.62
35	2	00.055.046	Elbow
36	2	00.055.045	Nut
37	4	F0.016.025I	Clamp D.16/24

LIQUID FLOW PATH WITH MANUAL CONTROL VALVES

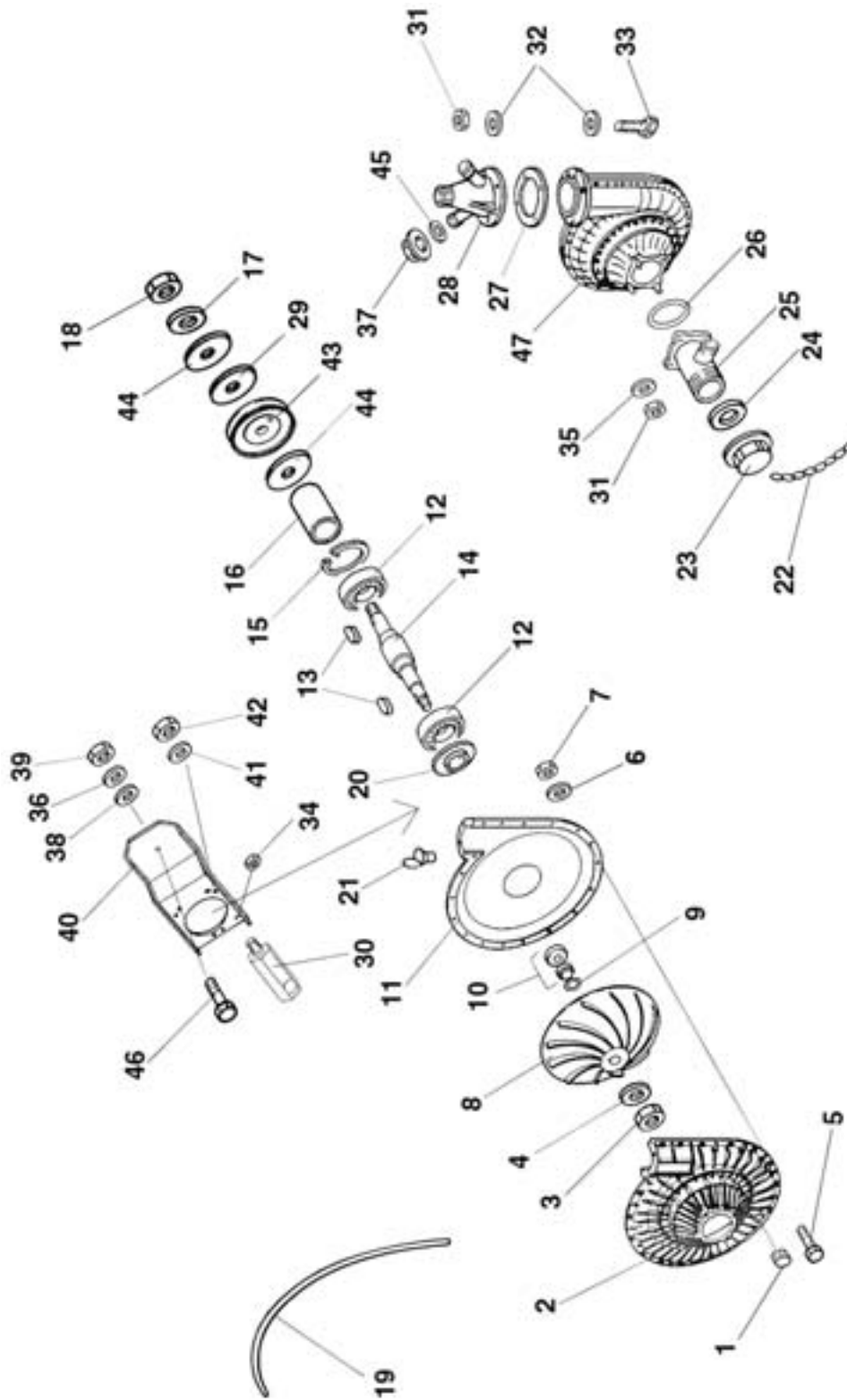
<u>REF#</u>	<u>QTY.</u>	<u>PART NO.</u>	<u>DESCRIPTION</u>
38	4	F0.025.045	Clamp D.25/45
39	2	F0.024.036	Clamp D.24/36
40	1	00.058.006	Nut
41	1	00.058.004	Hosetail
42	1	OR.003.112	O-Ring 28.24 x 2.62
43	4	F0.016.027I	Clamp D.16/27
44	1	02.355.000	Tie
45	1	TM.014.000	Plug
46	4	RP.010.000	Washer D.10
47	1	24.072.000	Nut

INLINE FILTER ASSEMBLY 02.450.020



<u>REF#</u>	<u>QTY.</u>	<u>PART NO.</u>	<u>DESCRIPTION</u>
1	1	02.450.001	Body
2	2	OR3969353	O-Ring D.39.69 x 3.53
3	1	326003.030	Cartridge 50 Mesh (Blue)
3	Optional	326002.030	Cartridge 32 Mesh (White)
4	1	OR7463533	O-Ring D.74.63 x 5.33
5	1	3262100.020	Bowl
6	1	02.450.003	Back Nut
7	1	3262100.030	Conveyor
8	1	3262100.100	Valve Body

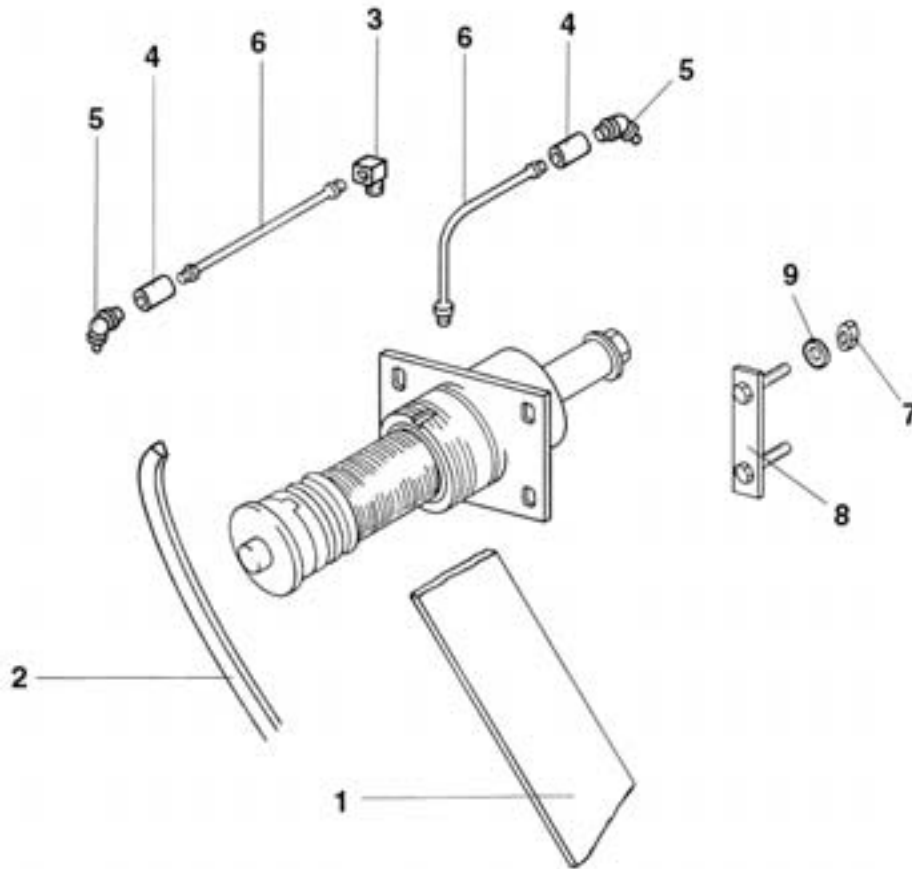
PUMP & TENSION PULLEY ASSEMBLY



PUMP & TENSION PULLEY ASSEMBLY

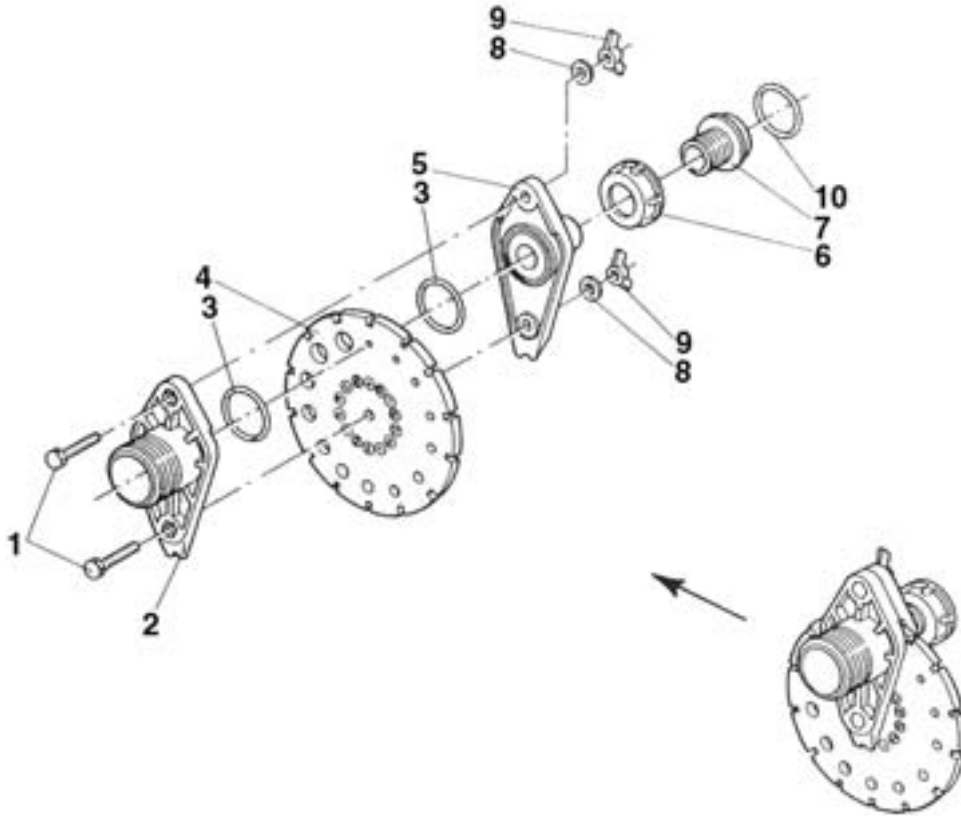
<u>REF#</u>	<u>QTY.</u>	<u>PART NO.</u>	<u>DESCRIPTION</u>
1	2	TM.010.015	Plug 10 x 1.5
2	1	02.152.010	Housing, Front Half
3	1	DOT.10.5587	Brass Nut M10
4	1	RP.010.00I	Washer D.10 INCX
5	17	TCC.05.25	Screw M5 x 25
6	17	RP.005.000	Washer D.5
7	17	DOT.05.5587	Brass Nut M5
8	1	02.153.000	Impeller
9	1	02.114.000	Washer
10	1	00.085.024CS	Pump Seal Kit
11	1	02.151.010	Housing Back Half
12	2	6303-2RS	Bearing
13	2	L.05.05.10	Key 5 x 5 x 10
14	1	02.155.010	Shaft
15	1	IO.047.000	Circlip I.47
16	1	02.722.000	Bushing
17	1	RP.010.030	Washer D.10 x 30
18	1	D0.10.5588G	Nut M10
19	1	OR.C02.070	O-Ring CORD D.2 L=700
20	1	20.406.000	Cover
21	1	02.473.000	Oil Feeder M8
22	2	04.111.022	Chain L=220
23	1	02.120.000	Cap, Drain
24	1	02.130.000	Gasket
25	1	02.116.000	Two Way Tap
26	1	OR.003.181	O-Ring
27	1	02.179.000	Gasket
28	1	02.113.000	Three Way Tap
29	1	02.723.005	Washer 2mm
30	1	02.963.100	Support, Tensioner
31	8	DOT.06.5587	Brass Nut M6
32	8	RP.006.000	Washer D.6
33	4	TE.006.025T	Bolt M6 x 25
34	1	DA.010.0AG	Nut M10 x 1.5
35	3	RP.006.018	Washer D.18
36	2	RP.012.000	Washer D.12
37	1	TF.012.000	Cap
38	1	MT.012.000	Belleville Washer D.12
39	1	DA.012.0AG	Nut M12 x 1.75
40	1	02.978.000DX	Bracket
41	3	RP.008.024	Washer D.8 x 24
42	3	D0.08.5588G	Nut M8
43	1	02.723.002	Pulley D.82 x 1 3V
44	2	02.723.001	Washer, 3mm Pulley
45	1	OR.000.117	O-Ring 13.1 x 2.62
46	1	TE.012.040T	Bolt M12 x 40
47	1	02.157.050	Pump Assembly

FAN SUPPORT



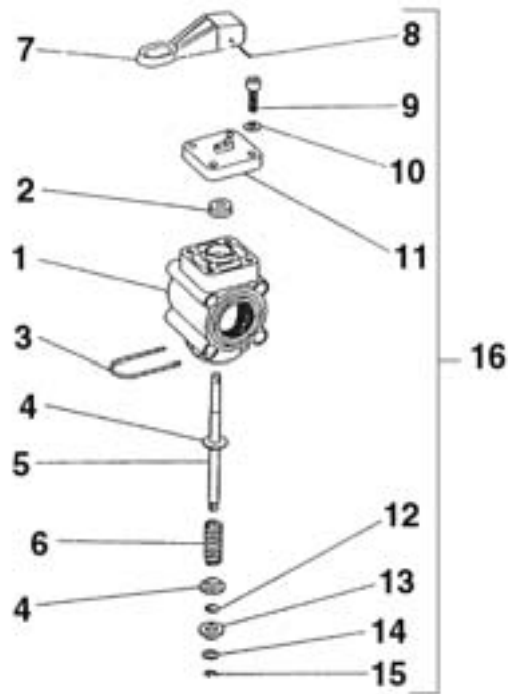
<u>REF#</u>	<u>QTY.</u>	<u>PART NO.</u>	<u>DESCRIPTION</u>
1	1	C0.690.J50	Drive Belt
2	1	C0.530.03V	V Belt
3	1	02.736.000	Connector 90o
4	2	02.737.000	Bushing
5	2	IS.010.001	Grease Zerk
6	2	02.738.040	Extension L=400
7	4	D0.12.5588G	Nut M12
8	2	02.945.000	Bolt Clamp
9	4	RP.012.036	Washer D.12 x 36

DIAL-A-RATE 02150000

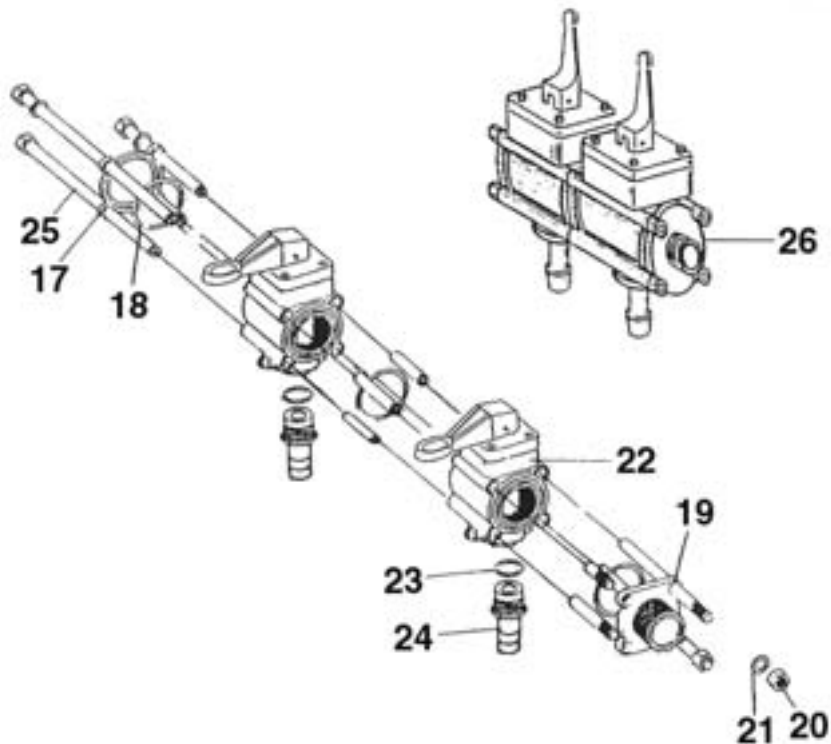


<u>REF#</u>	<u>QTY.</u>	<u>PART NO.</u>	<u>DESCRIPTION</u>
1	2	TE.006.030I	Bolt M6 x 30
2	1	02.149.000	Body Male
3	3	OR.002.062	O-Ring D.15.6 x 1.78
4	1	02.148.000	Disc
5	1	02.147.000	Body Female
6	1	00.055.045	Nut
7	1	02.117.000	Adaptor Nipple
8	2	RP.006.000	Washer D.6
9	2	DF.OTT.006	Nut M6 Wing
10	1	02.349.000	Gasket

MANUALLY OPERATED VALVE



MANUAL COMMAND GROUP 2-WAY



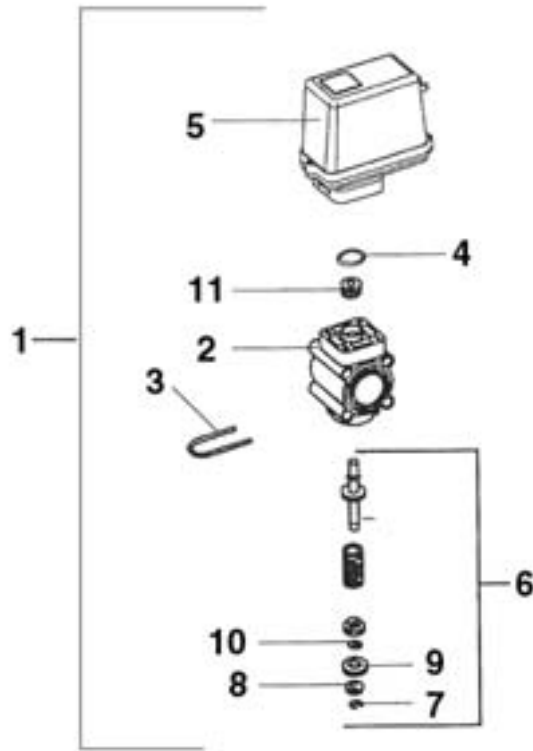
MANUALLY OPERATED VALVE

<u>REF#</u>	<u>QTY.</u>	<u>PART NO.</u>	<u>DESCRIPTION</u>
1	1	02.390.007	Body
2	4	02.390.008	Gasket
3	1	02.390.005	Clip
4	2	02.390.009	Cap
5	1	02.390.020	Pin
6	1	02.390.011	Spring
7	1	20.108.002	Lever for Manual Switch
8	1	SE.003.020	Spring Pin D.3 L=20
9	4	TCE.005.020	Cap Screw M5 L=20
10	4	RP.005.000	Washer D.5
11	1	02.390.021	Flange
12	1	02.390.016	O-Ring
13	1	02.390.015	Washer
14	1	02.390.014	Washer
15	1	02.390.013	Stop Ring
16	2	20.108.000	Valve, Manual Control

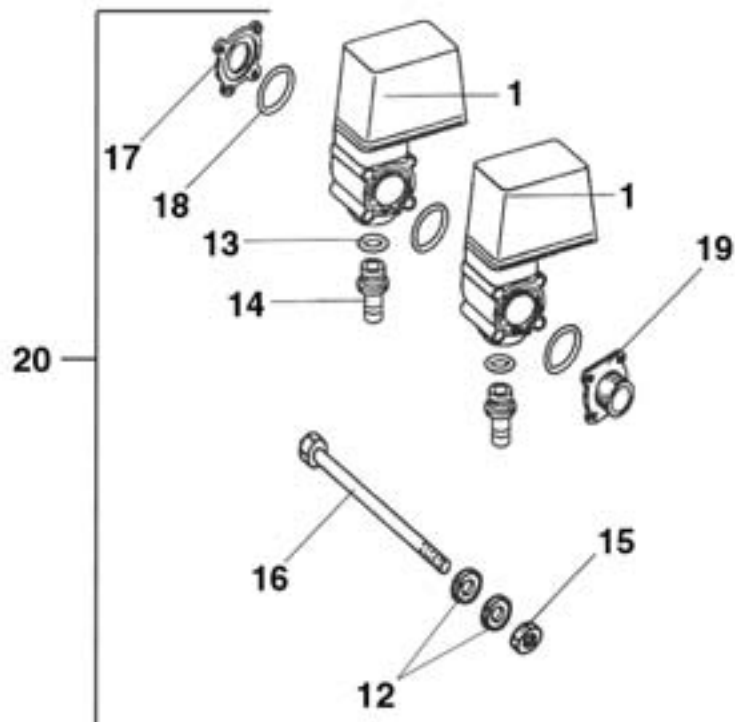
MANUAL COMMAND GROUP 2-WAY

<u>REF#</u>	<u>QTY.</u>	<u>PART NO.</u>	<u>DESCRIPTION</u>
17	1	02.390.017	Seal Cap
18	3	OR.003.156	O-Ring
19	1	02.390.018	Connector
20	4	D0.08.5588G	Nut M8
21	8	RP.008.000	Washer D.8
22	2	20.108.000	Manually Operated Valve
23	2	OR.000.130	O-Ring
24	2	02.406.000	Nipple D.16
25	4	TCE.008.150	Bolt M8 x 150
26	1	20.108.01C	Manual Command Group Assy.

OPTIONAL SOLENOID CONTROL



OPTIONAL SOLENOID COMMAND GROUP



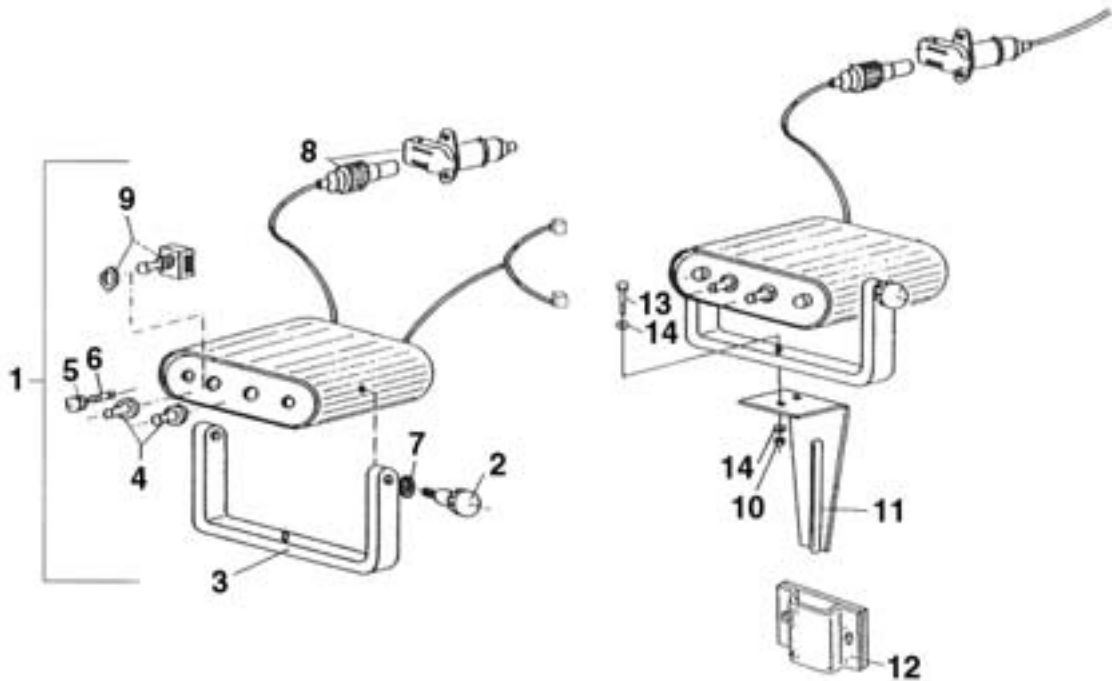
OPTIONAL SOLENOID CONTROL

<u>REF#</u>	<u>QTY.</u>	<u>PART NO.</u>	<u>DESCRIPTION</u>
1	1	02.390.029	Solenoid Valve
2	1	02.390.007	Body
3	1	02.390.005	Clip
4	1	OR.002.075	O-Ring D.18.77 x 1.78
5	1	02.390.028	Motor
6	1	02.390.027	Stem Assembly
7	1	02.390.013	Lock Clip
8	1	02.390.014	Washer
9	1	02.390.015	Washer
10	1	02.390.026	Washer
11	1	02.390.008	Seal D.6 x 17 x 6 Viton

OPTIONAL SOLENOID COMMAND GROUP

<u>REF#</u>	<u>QTY.</u>	<u>PART NO.</u>	<u>DESCRIPTION</u>
12	8	RP.008.000	Washer D.8
13	2	OR.000.130	O-Ring D.22.22 x 2.62
14	2	02.406.000	Hose Barb D.16
15	4	D0.08.5588G	Nut M8
16	4	TCE.008.150	Bolt M8 x 150
17	1	02.390.017	Flange
18	3	OR.003.156	O-Ring D.39 x 2.62
19	1	02.390.018	Connector
20	1	02.390.08C	Solenoid Command Group Assembly

OPTIONAL CONTROL BOX FOR SOLENOID VALVE

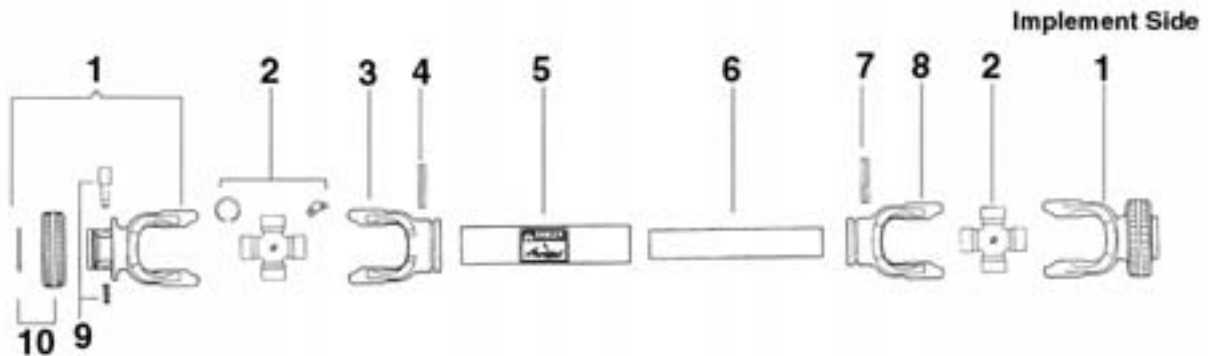


<u>REF#</u>	<u>QTY.</u>	<u>PART NO.</u>	<u>DESCRIPTION</u>
1	1	02.391.07C	Control Box Assembly L/Ref. 8
2	2	02.391.007	Knob, Bolt
3	1	02.391.006	Mounting Bracket for Box
4	2	02.391.001	Switch Cap
5	2	02.391.003	Panel Fuse Holder
6	2	02.391.004	Fuse 1.25 AMP
7	2	RD.006.000	Washer
8	1	02.391.005	Plug & Socket Kit
9	2	02.391.002	Double Pole Switch

KIT FOR CONTROL SOLENOID VALVE

10	1	DA.008.0AG	Nut
11	1	20.111.000	Mounting Bracket Electric Control
12	1	20.107.000	Support Control Assembly
13	1	TE.008.025T	Bolt
14	2	RP.008.024	Washer D.8 x 24

BONDIOLI & PAVESI PTO DRIVELINE 7106086NNT077



<u>REF#</u>	<u>QTY.</u>	<u>PART NO.</u>	<u>DESCRIPTION</u>
1	1	572060351	RS Collar Yoke 1-3/8 6-Spline
2	2	41206	Cross Kit Assembly #6
3	1	204066860	Outer Tube Yoke #6
4	1	341042000	Roll Pin O.T. #6
5	1	225690860	Outer Drive Tube #6
6	1	225110860	Inner Drive Tube #6
7	1	341043000	Roll Pin I.T. #6
8	1	204066852	Inner Tube Yoke #6
9	2	403000001	Quick Disconnect Pin Kit
10	2	240003051	RS Collar 5-6
11	1	572060351	RS Collar Yoke 1-3/8 6-Spline
	1	5F06086FF	Shield Kit With Bearings #6
	1	255060006	Shield Bearing Inner
	1	255060005	Shield Bearing Outer

LIMITED WARRANTY



GEARMORE, INC., warrants each new Gearmore product to be free from defects in material and workmanship for a period of twelve (12) months from date of purchase to the original purchaser. This warranty shall not apply to implements or parts that have been subject to misuse, negligence, accident, or that have been altered in any way.

Our obligation shall be limited to repairing or replacement of any part, provided that such part is returned within thirty (30) days from date of failure to Gearmore through the dealer from whom the purchase was made, transportation charges prepaid.

This warranty shall not be interpreted to render us liable for injury or damages of any kind or nature, direct, consequential or contingent, to person or property. This warranty does not extend to loss of crops, loss because of delay in harvesting or any other expenses, for any other reasons.

Gearmore in no way warrants engines, tires, or other trade accessories, since these items are warranted separately by these respective manufacturers.

Gearmore reserves the right to make improvements in design or changes in specification at any time, without incurring any obligations to owners or units previously sold.

GEARMORE, INC.
13477 Benson Ave.
Chino, CA 91710

Always refer to and heed machine operating warning decals on machine.

The serial number of this product is stored in our computer database, thus submitting a warranty registration card is not required.