



# **VENTURI AIR SPRAYERS**

**Parts Manual For  
Model P42N1-300-G  
& P42N1-400-G  
3-Pt. Mount**

**September 2002**

# TABLE OF CONTENTS

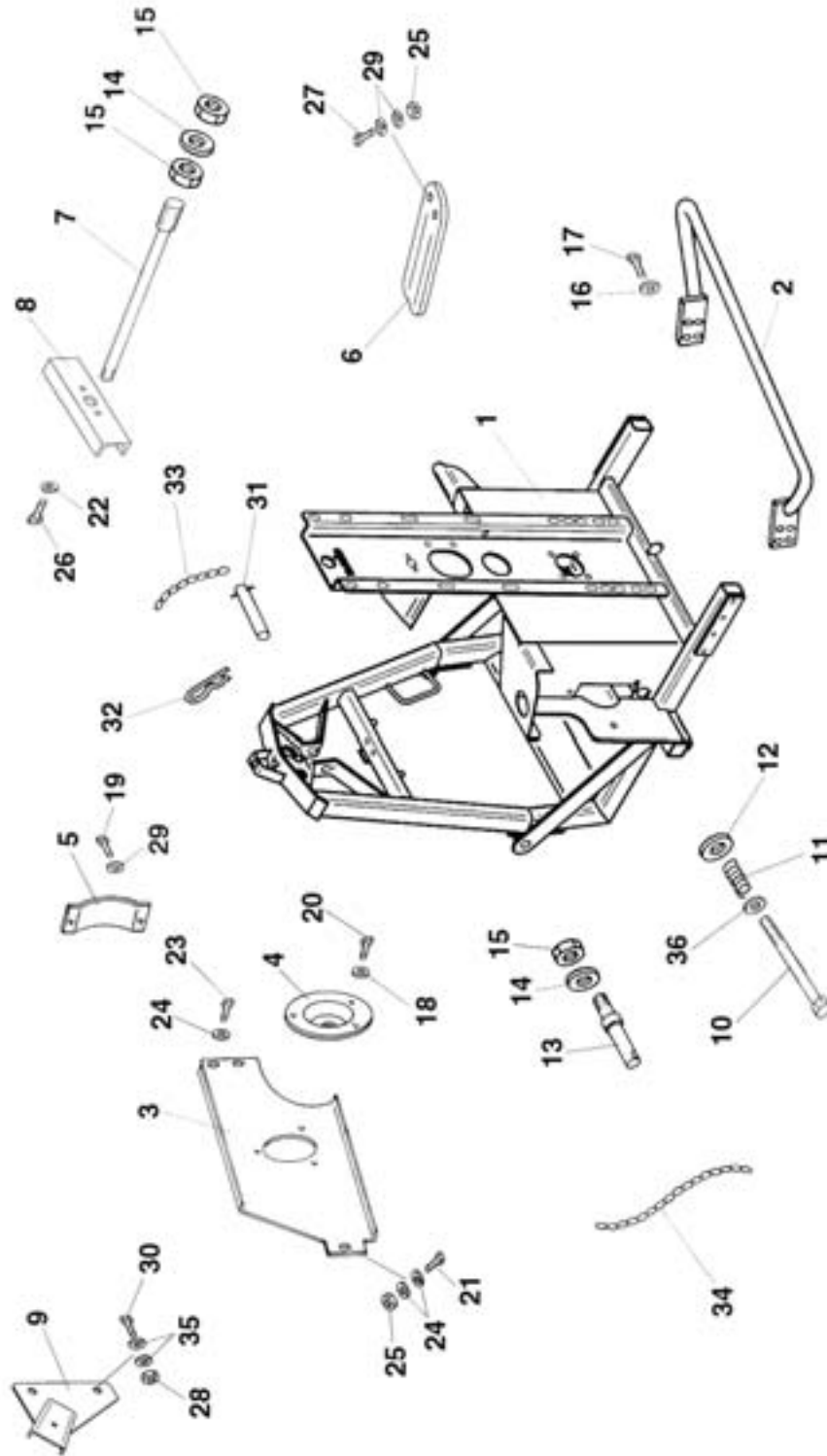
|  |       |
|--|-------|
| Main Frame .....   | 1-2   |
| Agitation & Tank .....                                     | 3-8   |
| Fan Assembly .....   | 9     |
| Fan support, Belt Stretcher & Complete Fan Support .....   | 10-14 |
| Clutch & Pulley Assembly .....                             | 15-16 |
| Liquid Flow Path .....                                     | 17-22 |
| Inline Filter Assembly .....                               | 23    |
| Pump & Tension Pulley Assembly .....                       | 24-25 |
| Fan Support .....  | 26    |
| Dial - A - Rate .....                                      | 27    |
| Manually Operated Valve & Manual Command Group 2-Way ..... | 28-29 |
| Solenoid Control Valve .....                               | 30-31 |
| Optional Control Box .....                                 | 32    |
| PTO Driveshaft .....                                       | 33    |
| Limited Warranty .....                                     | 34    |

Date of Purchase:\_\_\_\_\_

Model Number:\_\_\_\_\_

Serial Number:\_\_\_\_\_

# FRAME ASSEMBLY

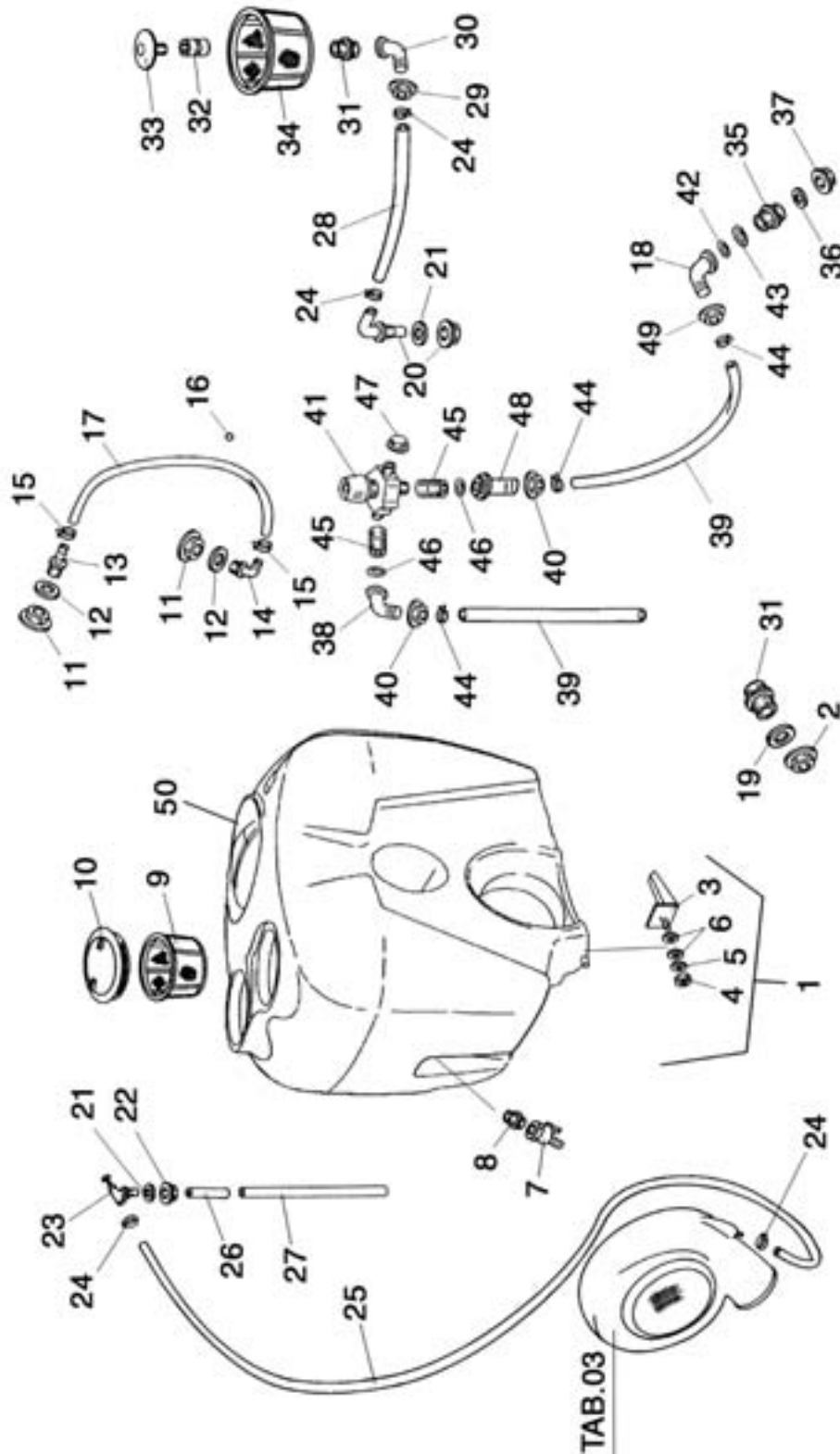


# FRAME ASSEMBLY

| <u>REF#</u> | <u>QTY.</u> | <u>PART NO.</u> | <u>DESCRIPTION</u>   |
|-------------|-------------|-----------------|----------------------|
| 1           | 1           | 40.226.000      | Main Frame           |
| 2           | 1           | 40.000.000      | Rear Bumper          |
| 3           | 1           | 40.227.000      | Plate, Front         |
| 4           | 1           | 20.434.000      | Cover                |
| 5           | 1           | 20.743.000      | Cover Plate          |
| 6           | 1           | 20.744.000      | Bracket              |
| 7           | 1           | 20.754.101      | Rod, Tank Retaining  |
| 8           | 1           | 20.737.100      | Support Plate        |
| 9           | 1           | 20.739.000      | Support Plate        |
| 10          | 1           | 20.738.000      | Bolt, Belt Stretcher |
| 11          | 1           | 02.964.000      | Spring               |
| 12          | 1           | 02.140.003      | Washer               |
| 13          | 2           | 04.064.000      | Lift Pin             |
| 14          | 3           | RD.022.000      | Washer D.22          |
| 15          | 4           | DO.22.5588G     | Nut M22              |
| 16          | 4           | RP.010.000      | Washer D.10          |
| 17          | 4           | TE.010.025T     | Bolt M10 x 25        |
| 18          | 3           | RP.006.018      | Washer D.18          |
| 19          | 2           | TE.008.016T     | Bolt M8 x 16         |
| 20          | 3           | TE.006.016T     | Bolt M6 x 16         |
| 21          | 1           | TE.008.025T     | Bolt M8 x 25         |
| 22          | 2           | RD.008.000      | Washer D.8           |
| 23          | 2           | TE.008.012T     | Bolt M8 x 12         |
| 24          | 4           | RP.008.024      | Washer D.8 x 24      |
| 25          | 3           | DO.08.5588G     | Nut M8               |
| 26          | 2           | TE.008.035T     | Bolt M8 x 35         |
| 27          | 2           | TE.008.070      | Bolt M8 x 70         |
| 28          | 2           | DO.10.5588G     | Nut M10              |
| 29          | 6           | RP.008.000      | Washer D.8           |
| 30          | 2           | TE.010.025T     | Bolt M10 x25         |
| 31          | 1           | 04.076.000      | Pin                  |
| 32          | 1           | 00.100.004      | Hair Pin             |
| 33          | 2           | 02.278.001      | Chain D2.2 x 16"     |
| 34          | 2           | 02.278.001      | Chain D2.2 x 24"     |
| 35          | 4           | RP.010.030      | Washer D.10 x 30     |
| 36          | 1           | RP.012.000      | Washer D.12          |

# AGITATION & TANK 100 GALLON

For S/N 001025 - 001275



TAB.03

# AGITATION & TANK 100 GALLON

For S/N 001025 - 001275

| <u>REF#</u> | <u>QTY.</u> | <u>PART NO.</u> | <u>DESCRIPTION</u>                              |
|-------------|-------------|-----------------|---|
| 1           | 1           | 40.219.000      | Tank w/Support - 100 Gal. (s/n 001025 - 001275) |
| 2           | 1           | 00.542.000      | Back Nut  |
| 3           | 1           | 20.749.000      | Support Plate                                   |
| 4           | 1           | DA.010.0AG      | Nut M10 x 1.5                                   |
| 5           | 1           | RP.010.030      | Washer D.10 x 30                                |
| 6           | 2           | 20.436.000      | Rubber Washer D.6                               |
| 7           | 1           | 02.497.000      | Ball Valve                                      |
| 8           | 1           | 02.380.000      | Nipple  |
| 9           | 1           | 02.298.000      | Basket, Strainer                                |
| 10          | 1           | 02.476.000      | Lid D.255                                       |
| 11          | 2           | 02.458.000      | Ring Nut  |
| 12          | 2           | OR2022353       | O-Ring 20.22 x 3.53                             |
| 13          | 1           | 02.482.000      | Hosetail  |
| 14          | 1           | 02.457.000      | Hosetail 90°                                    |
| 15          | 2           | F0.008.016I     | Clamp D.8/16                                    |
| 16          | 1           | 02.478.000      | Floating Ball D.9.5                             |
| 17          | 1           | 02.378.000      | Gauge Hose                                      |
| 18          | 1           | 02.339.000      | Hose Barb                                       |
| 19          | 1           | 02.066.000      | Gasket 33 x 45 x 3                              |
| 20          | 1           | 02.290.000      | Hosetail Assembly                               |
| 21          | 2           | 02.032.000      | Gasket 26 x 40 x 2                              |
| 22          | 1           | 00.541.000      | Back Nut  |
| 23          | 1           | 02.135.000      | Piston  |
| 24          | 4           | F0.016.027I     | Clamp D.16/27                                   |
| 25          | As Req'd    | 02.372.000      | Hose D.19 Per Foot                              |
| 26          | As Req'd    | 02.212.000      | Hose D.19 Per Foot                              |
| 27          | As Req'd    | 02.420.000      | Hose D.20 Per Foot                              |
| 28          | As Req'd    | 20.211.000      | Hose D.19 Per Foot                              |
| 29          | 1           | 00.055.242      | Nut   |
| 30          | 1           | 00.055.038      | Hosetail  |
| 31          | 2           | 00.055.034      | Nipple  |
| 32          | 1           | 00.373.000      | Sleeve  |
| 33          | 1           | 00.131.010      | Shower Head                                     |
| 34          | 1           | 00.646.010      | Basket, Strainer                                |
| 35          | 1           | 00.345.000      | Nipple  |
| 36          | 1           | 02.033.000      | Gasket 42 x 55 x 3                              |
| 37          | 1           | 00.543.000      | Nut   |
| 38          | 1           | 00.058.004      | Hosetail D.30                                   |
| 39          | As Req'd    | 02.215.000      | Hose D.30 Per Foot                              |
| 40          | 1           | 00.058.006      | Cap Nut   |

# AGITATION & TANK 100 GALLON

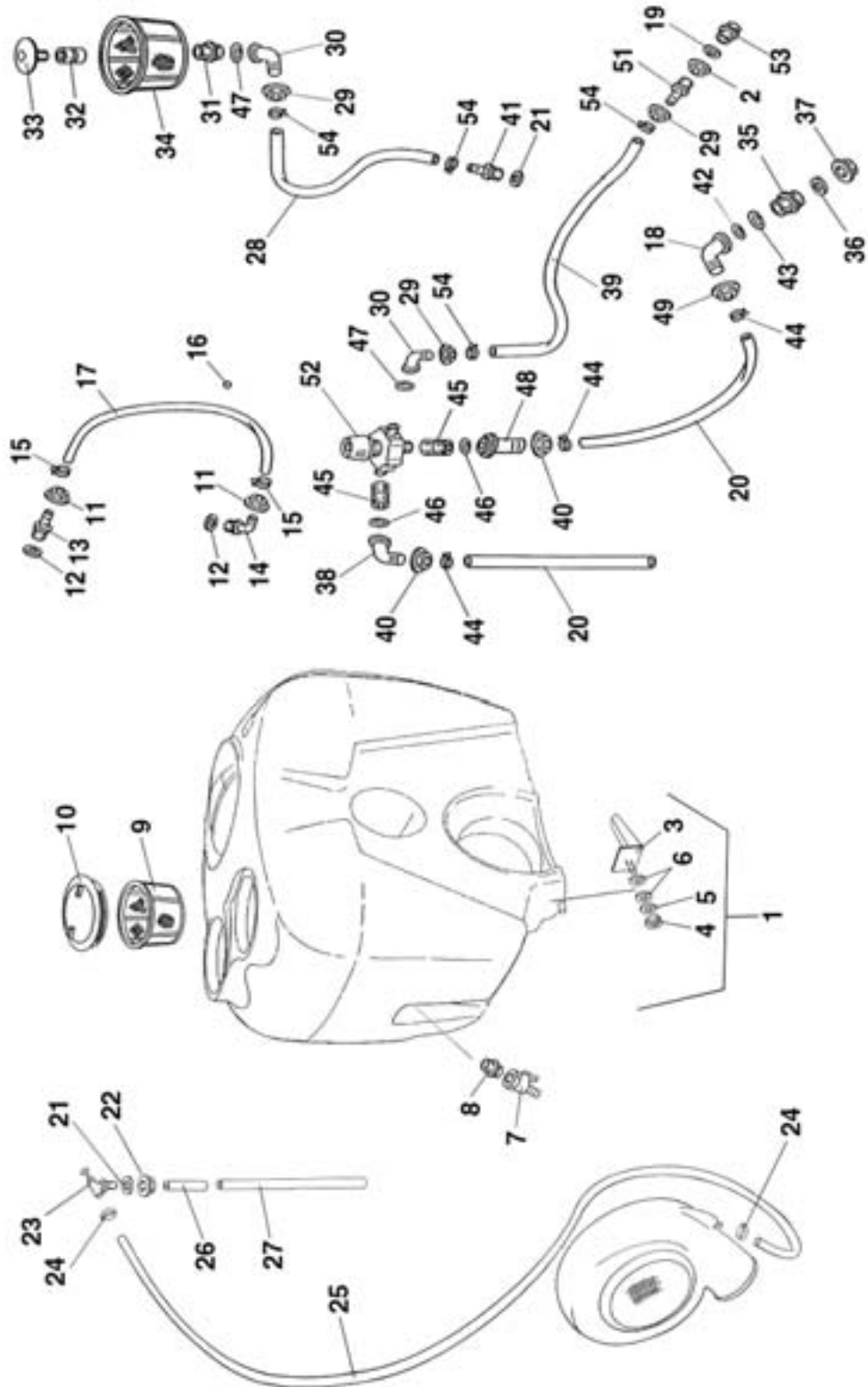
For S/N 001025 - 001275

| <u>REF#</u> | <u>QTY.</u> | <u>PART NO.</u> | <u>DESCRIPTION</u>  |
|-------------|-------------|-----------------|---------------------|
| 41          | 1           | 02.447.300      | Regulator Valve     |
| 42          | 1           | OR.003.106      | O-Ring 26.64 x 2.62 |
| 43          | 1           | OR.003.112      | O-Ring 28.24 x 2.62 |
| 44          | 3           | F0.025.040I     | Clamp D.25/40       |
| 45          | 2           | 02.374.000      | Reducer             |
| 46          | 2           | OR.000.508      | O-Ring 30 x 3       |
| 47          | 1           | TF.001.000      | Cap                 |
| 48          | 1           | 00.058.028      | Nipple              |
| 49          | 1           | 00.493.000      | Nut                 |

# AGITATION & TANK

300LT. - For S/N 010301 - ----

400LT. - For S/N 010095 - ----





# AGITATION & TANK

**300LT. - For S/N 010301 - -----**

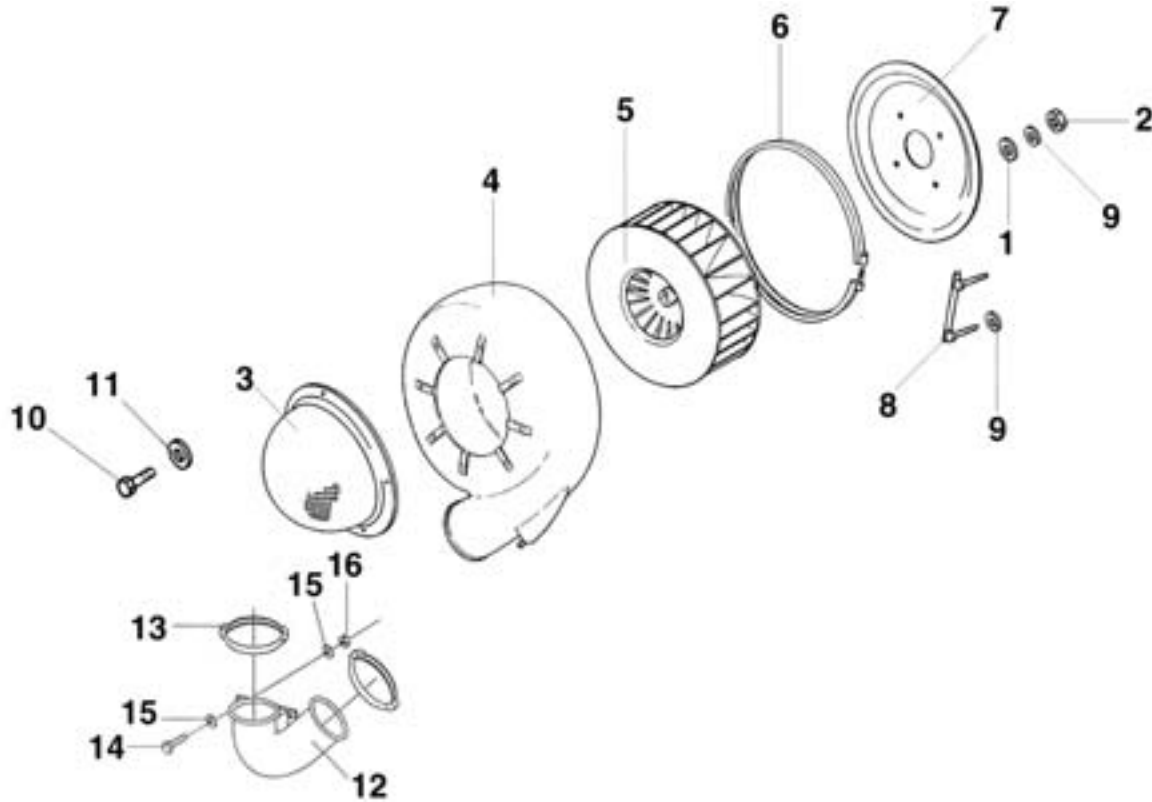
**400LT. - For S/N 010095 - -----**

| <u>REF#</u> | <u>QTY.</u> | <u>PART NO.</u> | <u>DESCRIPTION</u>               |
|-------------|-------------|-----------------|----------------------------------|
| 1           | 1           | 40.218.002      | Tank 75 Gal. s/n 010301 - -----  |
| 1           | 1           | 40.219.002      | Tank 100 Gal. s/n 010095 - ----- |
| 2           | 1           | 00.542.000      | Back Nut                         |
| 3           | 1           | 20.749.000      | Support Plate                    |
| 4           | 1           | DA.010.0AG      | Nut M10 x 1.5                    |
| 5           | 1           | RP.010.030      | Washer D.10 x 30                 |
| 6           | 2           | 20.436.000      | Rubber Washer D.6                |
| 7           | 1           | 02.497.000      | Ball Valve                       |
| 8           | 1           | 02.380.000      | Nipple                           |
| 9           | 1           | 02.298.000      | Basket, Strainer                 |
| 10          | 1           | 02.476.000      | Lid D.255                        |
| 11          | 2           | 02.458.000      | Ring Nut                         |
| 12          | 2           | OR2022353       | O-Ring 20.22 x 3.53              |
| 13          | 1           | 02.482.000      | Hosetail                         |
| 14          | 1           | 02.457.000      | Hosetail 90°                     |
| 15          | 2           | F0.008.016I     | Clamp D.8/16                     |
| 16          | 1           | 02.478.000      | Floating Ball D.9.5              |
| 17          | 1           | 02.378.000      | Gauge Hose L=850                 |
| 18          | 1           | 00.587.000      | Nipple                           |
| 19          | 1           | 02.066.000      | Gasket 33 x 45 x 3               |
| 20          | As Req'd    | 02.215.000      | Hose D.25 Per Foot               |
| 21          | 2           | 02.032.000      | Gasket 26 x 40 x 2               |
| 22          | 1           | 00.541.000      | Back Nut                         |
| 23          | 1           | 02.135.000      | Piston                           |
| 24          | 2           | F0.014.024      | Clamp D.14/24                    |
| 25          | As Req'd    | 02.372.000      | Hose D.19 Per Foot               |
| 26          | As Req'd    | 02.212.000      | Hose D.19 Per Foot               |
| 27          | As Req'd    | 02.420.000      | Hose D.20 Per Foot               |
| 28          | 1           | 20.798.075      | Hose D.25 x 33 L=750             |
| 29          | 3           | 00.055.242      | Nut                              |
| 30          | 2           | 00.055.027      | Hosetail                         |
| 31          | 1           | 00.055.034      | Nipple                           |
| 32          | 1           | 00.373.000      | Sleeve                           |
| 33          | 1           | 00.131.000      | Shower Head                      |
| 34          | 1           | 00.646.010      | Basket, Strainer                 |
| 35          | 1           | 00.345.000      | Nipple                           |
| 36          | 1           | 02.033.000      | Gasket 42 x 55 x 3               |
| 37          | 1           | 00.543.000      | Nut                              |
| 38          | 1           | 00.058.004      | Hosetail D.30                    |
| 39          | 1           | 20.770.047      | Hose D.25 L=470                  |
| 40          | 2           | 00.058.006      | Cap Nut                          |

# AGITATION & TANK

| <u>REF#</u> | <u>QTY.</u> | <u>PART NO.</u> | <u>DESCRIPTION</u>  |
|-------------|-------------|-----------------|---------------------|
| 41          | 1           | 20.793.000      | Nipple              |
| 42          | 1           | OR.003.106      | O-Ring 26.64 x 2.62 |
| 43          | 1           | OR.003.112      | O-Ring 28.24 x 2.62 |
| 44          | 3           | F0.025.040I     | Clamp D.25/40       |
| 45          | 2           | 02.374.000      | Reducer             |
| 46          | 2           | OR.000.508      | O-Ring 30 x 3       |
| 47          | 2           | OR2381262       | O-Ring 23.81 x 2.62 |
| 48          | 1           | 00.058.028      | Nipple              |
| 49          | 1           | 00.493.000      | Nut                 |
| 50          | 1           | 20.787.000      | Main Lid Assembly   |
| 51          | 1           | 00.055.021      | Hose Barb D.25      |
| 52          | 1           | 02.447.300      | Regulator Valve     |
| 53          | 1           | 2502041         | Nipple 1" H=45/22   |
| 54          | 4           | F0.023.035I     | clamp 23/35         |

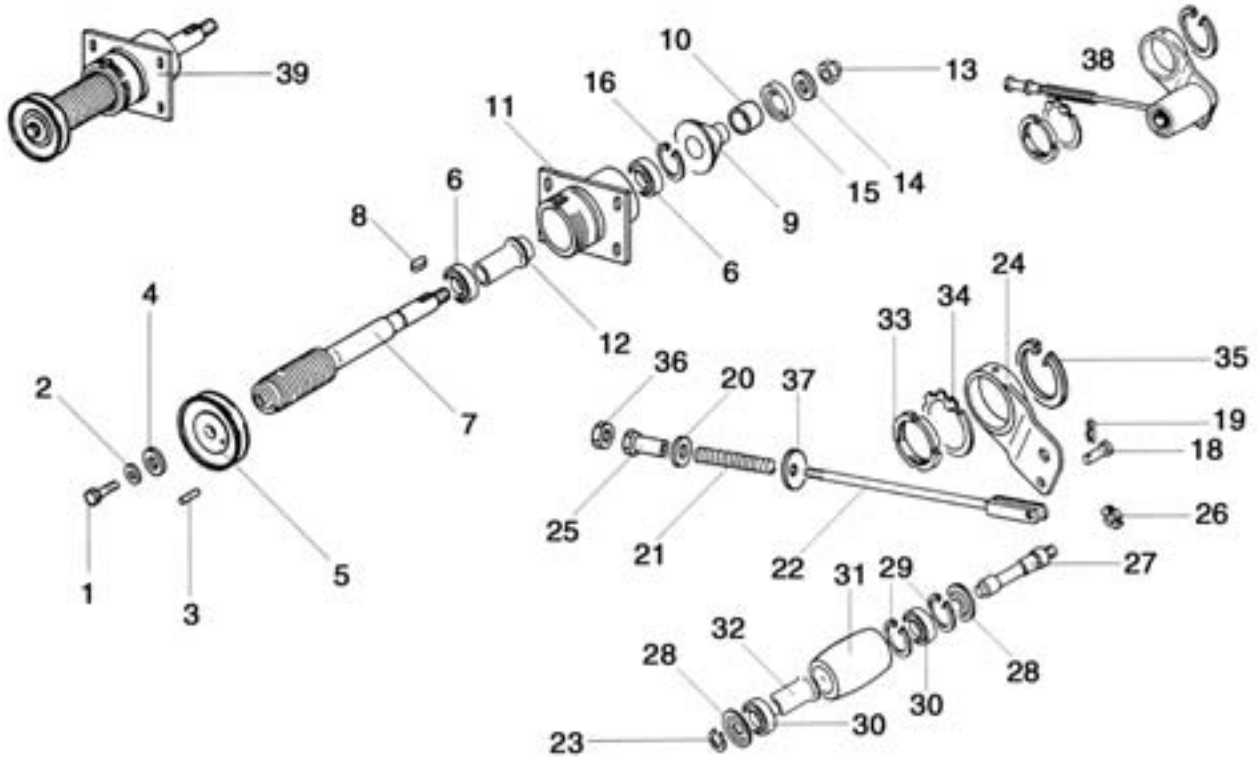
# FAN ASSEMBLY



| <u>REF#</u> | <u>QTY.</u> | <u>PART NO.</u> | <u>DESCRIPTION</u>        |
|-------------|-------------|-----------------|---------------------------|
| 1           | 4           | RP.010.040      | Washer D.10 x 40          |
| 2           | 4           | D0.10.5588G     | Nut M10                   |
| 3           | 1           | 05.654.100      | Protection Cover          |
| 4           | 1           | 04.854.000      | Fan Casing                |
| 5           | 1           | 04.720.000      | Fan                       |
| 6           | 1           | 04.874.000      | Clamp D.485               |
| 7           | 1           | 04.853.000      | Cover s/n 001025 - 001275 |
| 7           | 1           | 40.268.000      | Cover s/n 010095 - -----  |
| 8           | 2           | 20.088.000      | Bracket For Back Cover    |
| 9           | 8           | RP.010.030      | Washer D.10 x 30          |
| 10          | 4           | TE.006.016T     | Bolt M6 x 16              |
| 11          | 4           | RP.006.000      | Washer D.6                |
| 12          | 1           | 04.882.000      | Lower Elbow D.175         |
| 13          | 2           | 05.616.000      | Clamp D.190               |
| 14          | 2           | TE.010.030T     | Bolt M10 x 30             |
| 15          | 4           | RP.010.000      | Washer D.10               |
| 16          | 2           | D0.10.5588G     | Nut M10                   |

# FAN SUPPORT & BELT TENSIONER

For S/N 001025 - 001275



| <u>REF#</u> | <u>QTY.</u> | <u>PART NO.</u> | <u>DESCRIPTION</u> |
|-------------|-------------|-----------------|--------------------|
| 1           | 1           | TE.010.025FT    | Bolt 10 x 25       |
| 2           | 1           | RP.010.028      | Washer D.10 x 28   |
| 3           | 1           | SE.006.020      | Spring Pin 6 x 20  |
| 4           | 1           | RP.010.040      | Washer D.10 x 40   |
| 5           | 1           | 02.723.000      | Pulley D78 x 13    |
| 6           | 2           | 6305-2RS        | Bearing            |
| 7           | 1           | 04.086.055      | Shaft              |
| 8           | 1           | L.08.07.35      | Key 8 x 7 x 35     |
| 9           | 1           | 04.800.000      | Spacer             |
| 10          | 1           | 04.098.000      | Bushing            |
| 11          | 1           | 04.097.000      | Housing            |
| 12          | 1           | 04.087.000      | Spacer Tube        |

# FAN SUPPORT

For S/N 001025 - 001275

| <u>REF#</u> | <u>QTY.</u> | <u>PART NO.</u> | <u>DESCRIPTION</u> |
|-------------|-------------|-----------------|--------------------|
| 13          | 1           | DA.022.0BF      | Nut M22 x 1.5      |
| 14          | 1           | RP.022.000      | Washer D.22        |
| 15          | 1           | 04.801.000      | Bushing            |
| 16          | 1           | IO.062.000      | Circlip I62        |
| 17          | 1           | 04.865.010      | Housing            |

## BELT STRETCHER

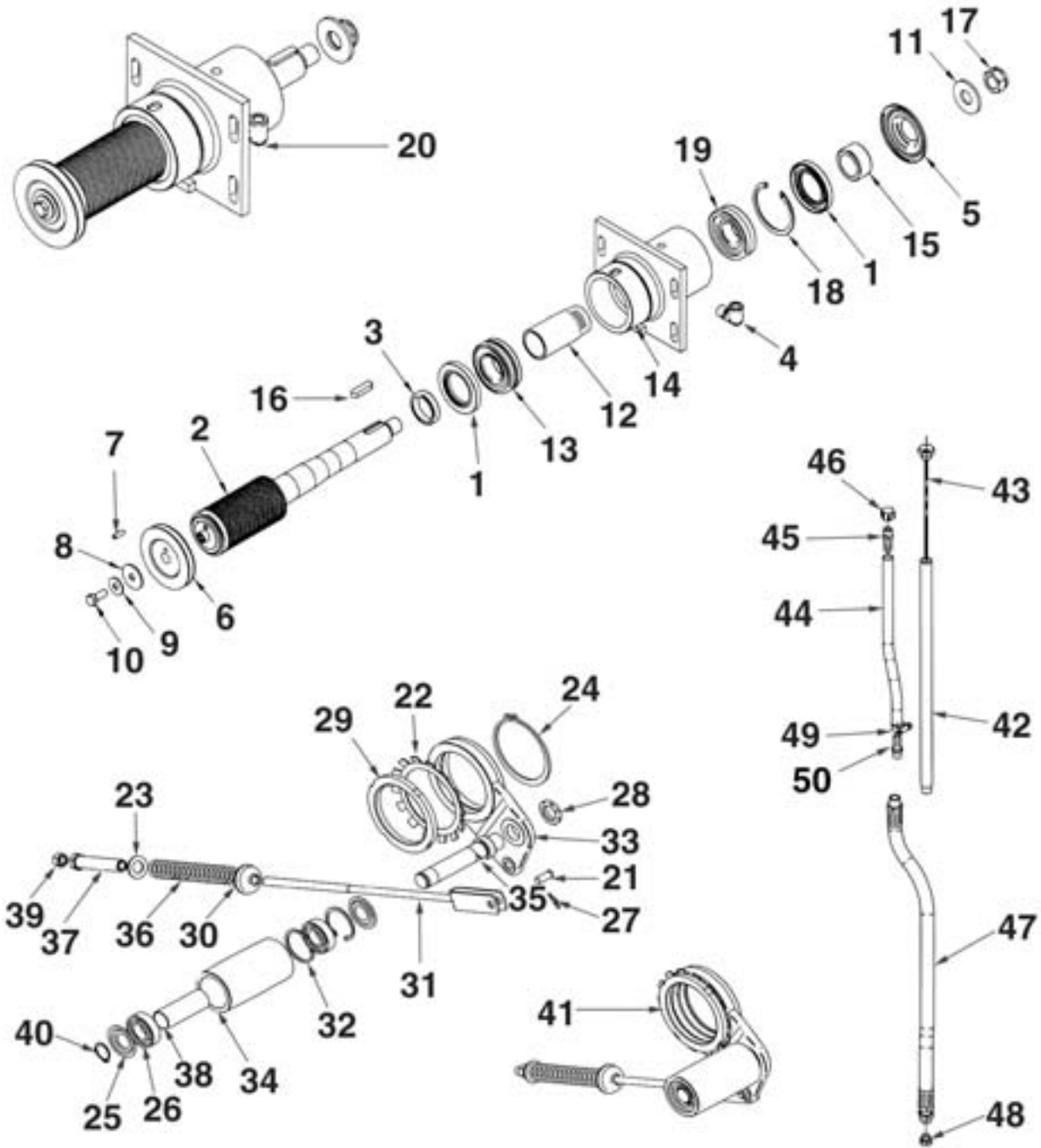
|    |   |             |                        |
|----|---|-------------|------------------------|
| 18 | 1 | 04.593.000  | Pin                    |
| 19 | 1 | 00.100.002  | Clip                   |
| 20 | 1 | RP.019.000  | Washer D.19            |
| 21 | 1 | 04.093.000  | Spring                 |
| 22 | 1 | 05.726.000  | Rod, Adjustment        |
| 23 | 1 | EO.017.000  | Circlip E17            |
| 24 | 1 | 04.095.000  | Belt Stretcher Housing |
| 25 | 1 | 04.583.000  | Screw Threaded Spacer  |
| 26 | 1 | KM.005.000  | Nut                    |
| 27 | 1 | 04.096.000  | Belt Stretcher Pin     |
| 28 | 2 | 04.080.000  | Cover Seal             |
| 29 | 2 | IO.047.000  | Circlip I47            |
| 30 | 2 | 6303-2RS    | Bearing                |
| 31 | 1 | 04.089.000  | Roller                 |
| 32 | 1 | 04.090.000  | Spacer                 |
| 33 | 1 | 04.099.000  | Nut                    |
| 34 | 1 | MB.016.000  | Washer                 |
| 35 | 1 | EO.080.000  | Circlip E80            |
| 36 | 1 | D0.12.5588G | Nut                    |
| 37 | 1 | 20.260.000  | Special Washer         |
| 38 | 1 | 04.090.001  | Bolt Stretcher Assy.   |

## COMPLETE FAN SUPPORT

|    |   |            |                   |
|----|---|------------|-------------------|
| 39 | 1 | 04.097.16C | Fan Support Assy. |
|----|---|------------|-------------------|

# FAN SUPPORT & BELT TENSIONER

For S/N 010095 - ----



# FAN SUPPORT & BELT TENSIONER

For S/N 010095

| <u>REF#</u> | <u>QTY.</u> | <u>PART NO.</u> | <u>DESCRIPTION</u> |
|-------------|-------------|-----------------|--------------------|
| 1           | 2           | 50X80X10        | Oil Seal           |
| 2           | 1           | 40.271.054      | Shaft D.54         |
| 3           | 1           | 40.264.000      | Bushing            |
| 4           | 1           | 20.789.000      | 90° Elbow          |
| 5           | 1           | 40.267.000      | Cover              |
| 6           | 1           | 02.723.003      | Pulley D.995       |
| 7           | 1           | SE.006.020      | Roll Pin           |
| 8           | 1           | RP.010.040      | Washer D.10 x 40   |
| 9           | 1           | RP.010.028      | Washer D.10 x 28   |
| 10          | 1           | TE.010.025FT    | Bolt M10 x 25      |
| 11          | 1           | RP.022.000      | Washer D.22        |
| 12          | 1           | 40.262.000      | Spacer             |
| 13          | 1           | 22206           | Bearing            |
| 14          | 1           | 40.260.000      | Housing            |
| 15          | 1           | 40.263.000      | Spacer             |
| 16          | 1           | L.08.07.35      | Key 8 x 7 x 35     |
| 17          | 1           | DA.022.0BF      | Nut M22 x 1.5      |
| 18          | 1           | I0.062.000      | Circlip I62        |
| 19          | 1           | 21305           | Bearing            |
| 20          | 1           | 40.284.000      | Support Assembly   |

## BELT TENSIONER

|    |   |             |                       |
|----|---|-------------|-----------------------|
| 21 | 1 | 04.593.000  | Pin                   |
| 22 | 1 | MB.016.000  | Washer                |
| 23 | 1 | RP.019.000  | Washer D.19           |
| 24 | 1 | E0.080.000  | Circlip E80           |
| 25 | 2 | 04.585.000  | Cover, Dust           |
| 26 | 2 | 6205-2RS    | Bearing               |
| 27 | 1 | 00.100.002  | Hair Pin              |
| 28 | 1 | KM.005.000  | Nut M5                |
| 29 | 1 | 04.099.000  | Nut                   |
| 30 | 1 | 20.260.000  | Cup Washer            |
| 31 | 1 | 05.726.000  | Rod, Adjustment       |
| 32 | 2 | I0.052.000  | Circlip I52           |
| 33 | 1 | 04.095.000  | Support, Idler        |
| 34 | 1 | 04.083.000  | Roller                |
| 35 | 1 | 04.835.000  | Pin                   |
| 36 | 1 | 04.578.000  | Spring                |
| 37 | 1 | 04.583.000  | Special Screw         |
| 38 | 1 | 04.084.000  | Spacer                |
| 39 | 1 | D0.12.5588G | Nut m12               |
| 40 | 1 | E0.025.000  | Circlip E25           |
| 41 | 1 | 04.850.002  | Belt Tension Assembly |

# FAN SUPPORT & BELT TENSIONER

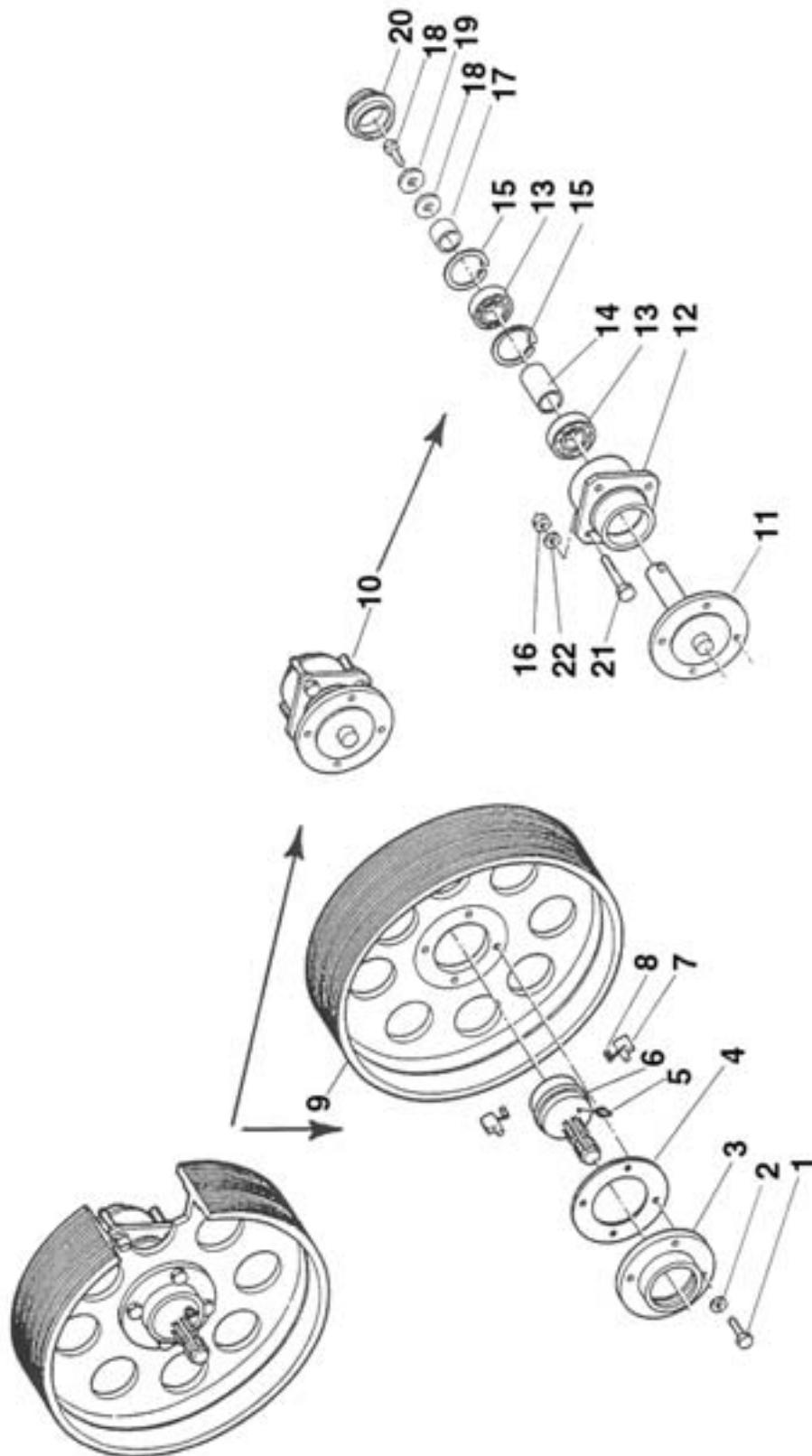
For S/N 010095 - -----

## OIL TUBE

| <u>REF#</u> | <u>QTY.</u> | <u>PART NO.</u> | <u>DESCRIPTION</u>   |
|-------------|-------------|-----------------|----------------------|
| 42          | 1           | 40.273.000      | Pipe L=390           |
| 43          | 1           | 40.265.000      | Dipstick             |
| 44          | 1           | 02.213.040      | Breather D.10 L=400  |
| 45          | 1           | 00.414.100      | Nipple D.11          |
| 46          | 1           | 02.013.000      | Plug                 |
| 47          | 1           | 20.790.000      | Drain Pipe L=585     |
| 48          | 1           | 40.266.000      | Drain Plug M12 x 1.5 |
| 49          | 1           | F0.008.016I     | Clamp                |
| 50          | 1           | 20.792.000      | Nipple D.11          |



# CLUTCH & PULLEY ASSEMBLY



# CLUTCH & PULLEY ASSEMBLY

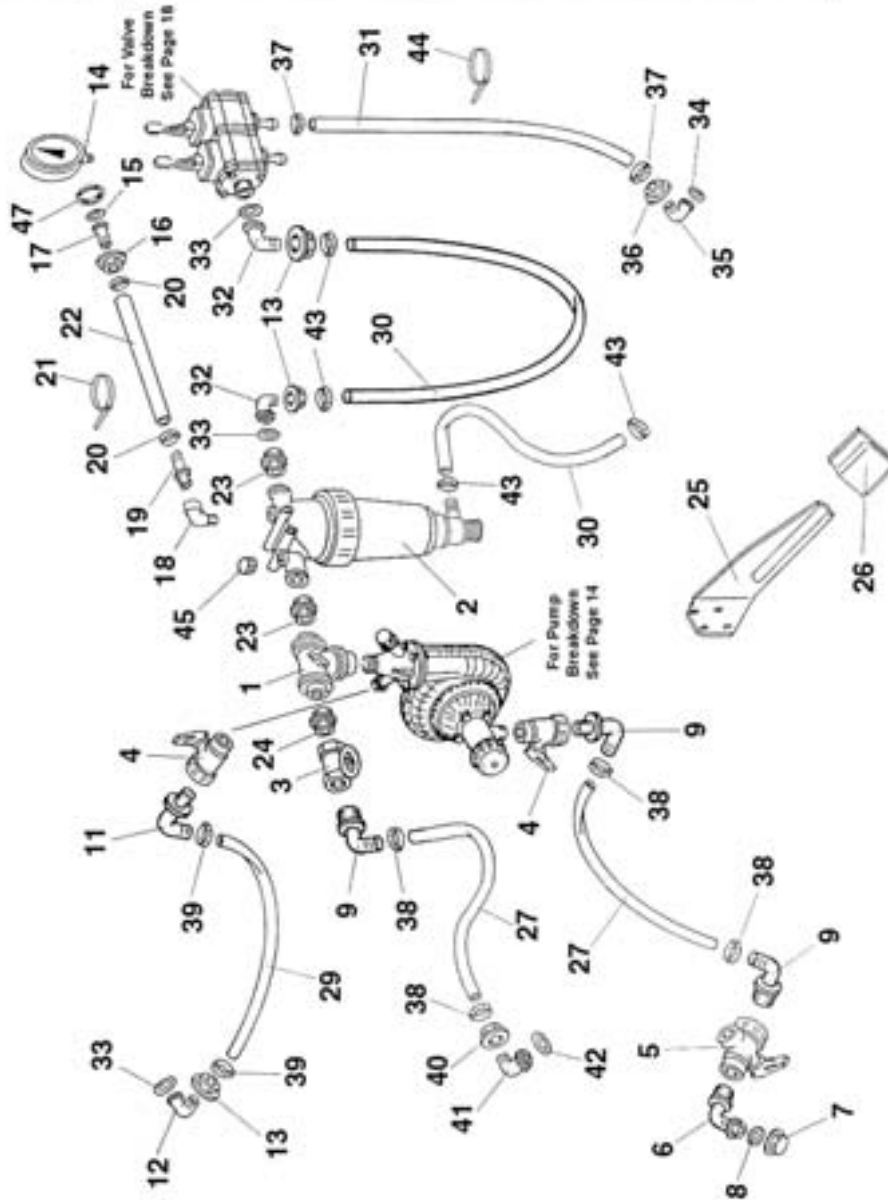
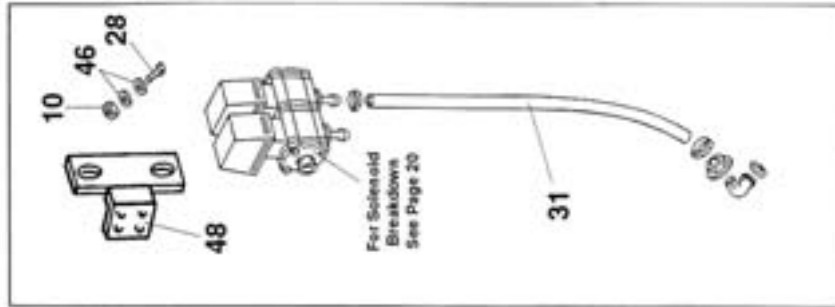
| <u>REF#</u> | <u>QTY.</u> | <u>PART NO.</u> | <u>DESCRIPTION</u>   |
|-------------|-------------|-----------------|----------------------|
| 1           | 4           | TE.012.040F     | Bolt M12 x 1.25 x 40 |
| 2           | 4           | RD.012.000      | Washer D.12          |
| 3           | 1           | 04.066.000      | Body                 |
| 4           | 1           | 04.719.000      | Gasket               |
| 5           | 1           | ID.010.001      | Grease Nipple M10    |
| 6           | 1           | 03.701.000      | Rotor                |
| 7           | 2           | 02.502.002      | Key                  |
| 8           | 2           | 02.502.001      | Spring               |
| 9           | 1           | 00.400.J24      | Pulley               |
| 10          | 1           | 04.094.01C      | Clutch               |

## CLUTCH ASSEMBLY

|    |   |              |                       |
|----|---|--------------|-----------------------|
| 11 | 1 | 04.085.000   | Shaft                 |
| 12 | 1 | 04.094.000   | Clutch                |
| 13 | 2 | 6206-2RS     | Bearing               |
| 14 | 1 | 04.060.000   | Spacer                |
| 15 | 2 | IO.062.000   | Internal Circlip D.62 |
| 16 | 4 | DO.10.5588G  | Nut M10               |
| 17 | 1 | 04.590.000   | Spacer                |
| 18 | 2 | RP.012.036   | Washer D.12 x 36      |
| 19 | 1 | TE.012.025FT | Bolt M12 x 25         |
| 20 | 1 | 04.062.001   | Hub Cover             |
| 21 | 4 | TE.010.080   | Bolt M10 x 80         |
| 22 | 4 | RP.010.000   | Washer D.10           |

# LIQUID FLOW PATH WITH MANUAL CONTROL VALVES

For S/N 001025 - 001275



# LIQUID FLOW PATH WITH MANUAL CONTROL VALVES

For S/N 001025 - 001275

| <u>REF#</u> | <u>QTY.</u> | <u>PART NO.</u> | <u>DESCRIPTION</u>  |
|-------------|-------------|-----------------|---------------------|
| 1           | 1           | 24.058.000      | Ball Valve          |
| 2           | 1           | 02.450.020      | Filter Assembly     |
| 3           | 1           | 02.272.000      | Tee                 |
| 4           | 2           | 04.109.000      | Ball Valve          |
| 5           | 1           | 24.053.000      | Ball Valve          |
| 6           | 1           | 02.292.000      | Hosetail 90°        |
| 7           | 1           | TF.001.000      | Cap                 |
| 8           | 1           | 02.265.000      | Gasket 20 x 30 x 5  |
| 9           | 3           | 00.465.000      | Hosetail 90°        |
| 10          | 2           | D0.10.5588G     | Nut M10             |
| 11          | 1           | 24.068.000      | Elbow 90°           |
| 12          | 1           | 00.055.037      | Hose Barb           |
| 13          | 3           | 00.055.242      | Nut                 |
| 14          | 1           | 02.445.000      | Pressure Gauge      |
| 15          | 1           | 02.349.000      | Gasket 17 x 23 x 3  |
| 16          | 1           | 02.288.000      | Nut                 |
| 17          | 1           | 24.071.000      | Hosetail            |
| 18          | 1           | 20.172.000      | Steel Elbow         |
| 19          | 1           | 00.414.000      | Hosetail            |
| 20          | 2           | F0.014.024      | Clamp D.14/24       |
| 21          | 2           | 02.354.000      | Tie                 |
| 22          | As Req'd    | 02.213.000      | Hose D.10 Per Foot  |
| 23          | 2           | 00.045.012      | Nipple              |
| 24          | 1           | 00.055.034      | Nipple              |
| 25          | 1           | 20.112.000      | Bracket, Support    |
| 26          | 1           | 20.107.000      | Pocket              |
| 27          | As Req'd    | 02.238.000      | Hose D.30 Per Foot  |
| 28          | 2           | TE.010.030T     | Bolt M10 x 30       |
| 29          | As Req'd    | 02.219.000      | Hose D.25 Per Foot  |
| 30          | As Req'd    | 02.212.000      | Hose D.19 Per Foot  |
| 31          | As Req'd    | 02.211.000      | Hose D.16 Per Foot  |
| 32          | 2           | 00.055.038      | Elbow               |
| 33          | 3           | OR.000.132      | O-Ring 23.81 x 2.62 |
| 34          | 2           | OR.000.121      | O-Ring 15.88 x 2.62 |
| 35          | 2           | 00.055.046      | Elbow               |
| 36          | 2           | 00.055.045      | Nut                 |
| 37          | 4           | F0.016.025I     | Clamp D.16/24       |

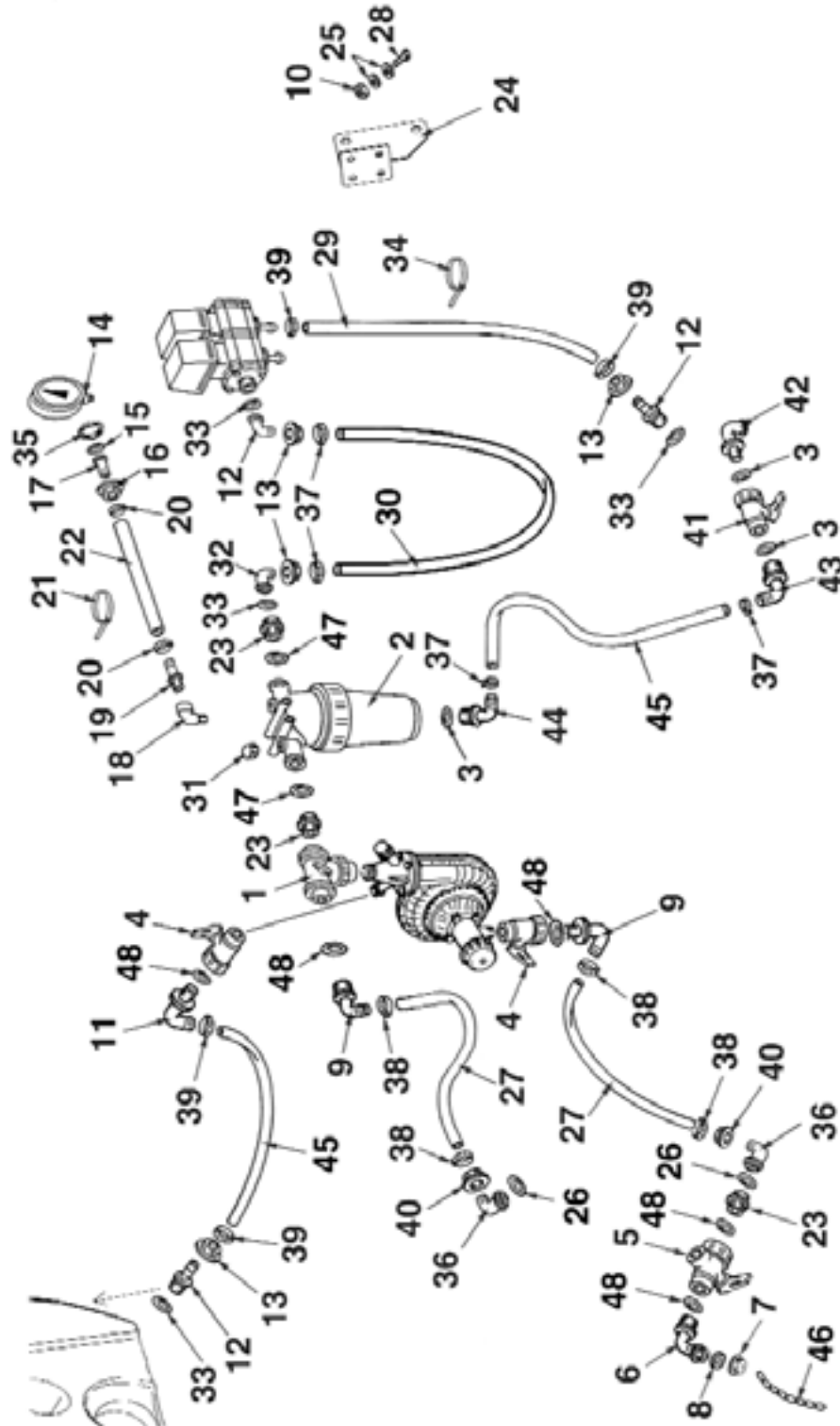
# LIQUID FLOW PATH WITH MANUAL CONTROL VALVES

For S/N 001025 - 001275

| <u>REF#</u> | <u>QTY.</u> | <u>PART NO.</u> | <u>DESCRIPTION</u>  |
|-------------|-------------|-----------------|---------------------|
| 38          | 4           | F0.025.045      | Clamp D.25/45       |
| 39          | 2           | F0.024.036      | Clamp D.24/36       |
| 40          | 1           | 00.058.006      | Nut                 |
| 41          | 1           | 00.058.004      | Hosetail            |
| 42          | 1           | OR.003.112      | O-Ring 28.24 x 2.62 |
| 43          | 4           | F0.016.027I     | Clamp D.16/27       |
| 44          | 7           | 02.355.000      | Tie                 |
| 45          | 1           | TM.014.000      | Plug                |
| 46          | 4           | RP.010.000      | Washer D.10         |
| 47          | 1           | 24.072.000      | Nut                 |
| 48          | 1           | 20.741.000      | Bracket             |

# LIQUID FLOW PATH WITH MANUAL CONTROL VALVES

For S/N 010095 - .....



# LIQUID FLOW PATH WITH MANUAL CONTROL VALVES

For S/N 010095 - -----

| <u>REF#</u> | <u>QTY.</u> | <u>PART NO.</u> | <u>DESCRIPTION</u>       |
|-------------|-------------|-----------------|--------------------------|
| 1           | 1           | 24.058.000      | Ball Valve               |
| 2           | 1           | 02.450.010      | Filter Assembly          |
| 3           | 3           | OR2580353       | O-ring 25.80 x 3.53      |
| 4           | 2           | 04.109.000      | Ball Valve               |
| 5           | 1           | 24.053.000      | Ball Valve               |
| 6           | 1           | 02.292.000      | Hosetail 90°             |
| 7           | 1           | TF.001.100      | Cap                      |
| 8           | 1           | 02.265.000      | Gasket 20 x 30 x 5       |
| 9           | 2           | 00.465.000      | Hosetail 90°             |
| 10          | 2           | D0.10.5588G     | Nut M10                  |
| 11          | 1           | 24.068.000      | Elbow 90°                |
| 12          | 3           | 00.055.021      | Hose Barb                |
| 13          | 5           | 00.055.242      | Nut                      |
| 14          | 1           | 02.445.000      | Pressure Gauge           |
| 15          | 1           | 20.769.000      | Gasket 19.2 x 11.5 x 2.5 |
| 16          | 1           | 02.287.000      | Nut                      |
| 17          | 1           | 02.379.020      | Hosetail                 |
| 18          | 1           | 20.172.000      | Steel Elbow              |
| 19          | 1           | 00.414.000      | Hosetail                 |
| 20          | 2           | F0.008.016I     | Clamp D.8/16             |
| 21          | 2           | 02.354.000      | Tie                      |
| 22          | As Req'd    | 02.213.000      | Hose D.10 Per Foot       |
| 23          | 3           | 00.045.012      | Nipple                   |
| 24          | 1           | 20.774.000      | Bracket                  |
| 25          | 4           | RP.010.000      | Washer                   |
| 26          | 1           | OR.003.112      | O-ring 28.24 x 2.62      |
| 27          | As Req'd    | 02.238.000      | Hose D.30 Per Foot       |
| 28          | 2           | TE.010.030T     | Bolt M10 x 30            |
| 29          | As Req'd    | 02.211.000      | Hose D.16 Per Foot       |
| 30          | As Req'd    | 02.212.000      | Hose D.19 Per Foot       |
| 31          | 1           | TM.014.000      | Plug                     |
| 32          | 2           | 00.055.038      | Elbow                    |
| 33          | 3           | OR.000.132      | O-ring 23.81 x 2.62      |
| 34          | 1           | 02.355.000      | Tie                      |
| 35          | 1           | 24.072.000      | Special Nut              |
| 36          | 2           | 00.058.004      | Elbow                    |
| 37          | 4           | F0.023.035I     | Clamp D.25/35            |

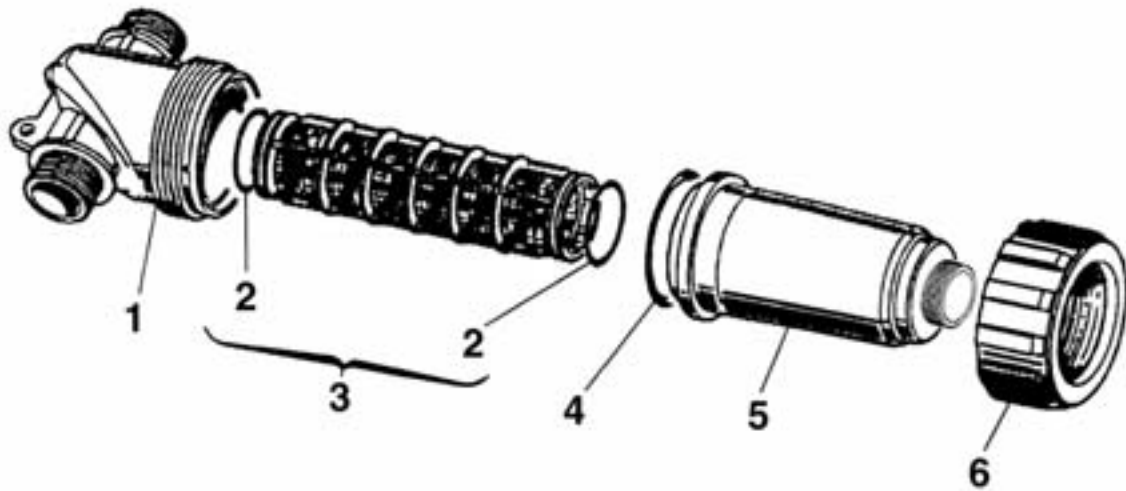
# LIQUID FLOW PATH WITH MANUAL CONTROL VALVES

For S/N 010095 - -----

| <u>REF#</u> | <u>QTY.</u> | <u>PART NO.</u> | <u>DESCRIPTION</u>  |
|-------------|-------------|-----------------|---------------------|
| 38          | 4           | F0.025.040I     | Clamp D.25/40       |
| 39          | 2           | F0.023.035I     | Clamp D.23/35       |
| 40          | 2           | 00.058.006      | Nut                 |
| 41          | 1           | 02.395.000      | Ball Valve          |
| 42          | 1           | 24.069.000      | Elbow               |
| 43          | 1           | 20.795.000      | Elbow               |
| 44          | 1           | 20.794.000      | Elbow               |
| 45          | As Req'd    | 02.219.000      | Hose D.25 Per Foot  |
| 46          | As Req'd    | 02.278.001      | Chain D2.2 Per Foot |
| 47          | 2           | OR3969353       | O-Ring 39.69 x 3.53 |
| 48          | 5           | OR303           | O-Ring 30 x 3       |

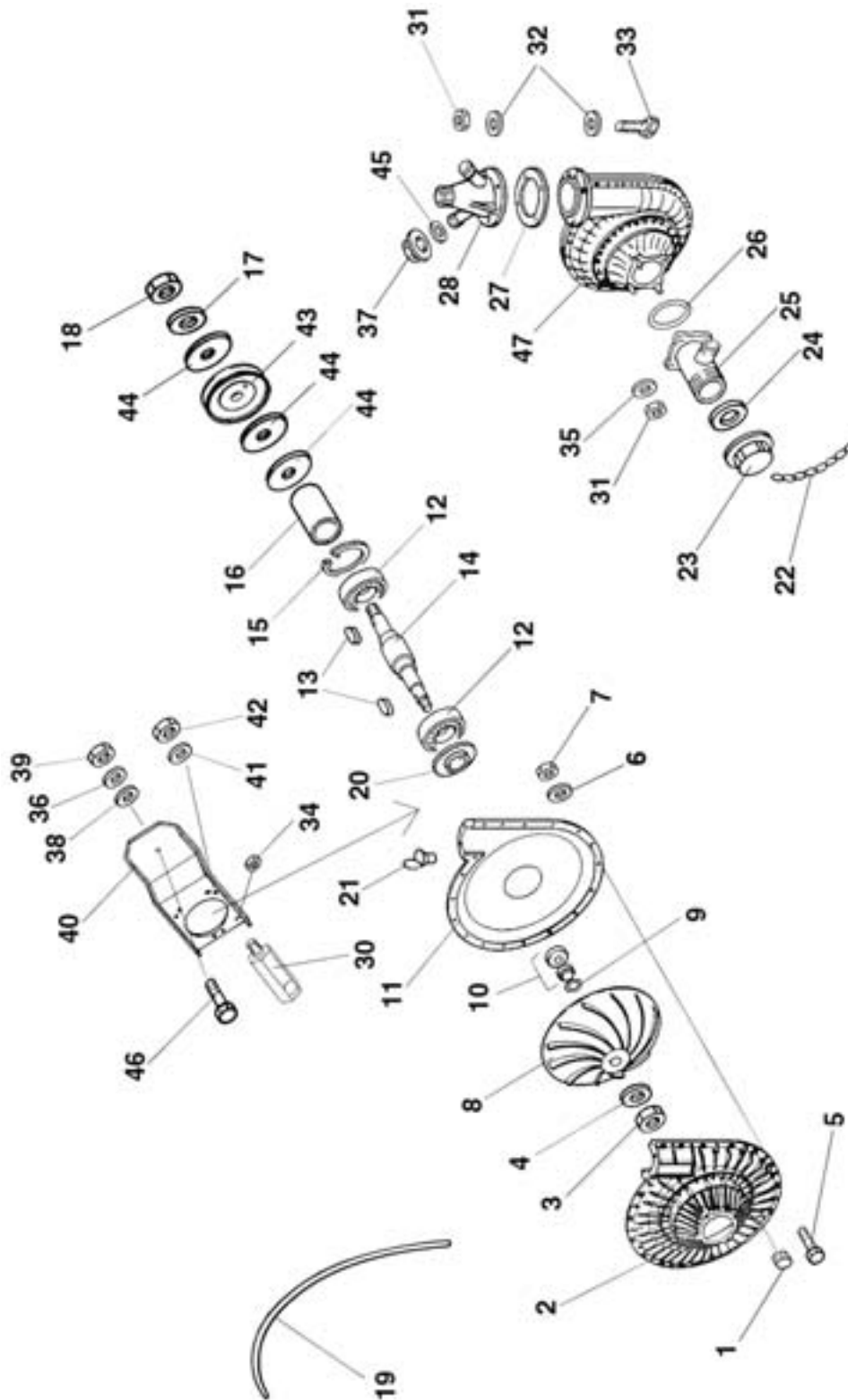


# INLINE FILTER ASSEMBLY 02.450.010



| <u>REF#</u> | <u>QTY.</u> | <u>PART NO.</u> | <u>DESCRIPTION</u>        |
|-------------|-------------|-----------------|---------------------------|
| 1           | 1           | 02.450.001      | Body                      |
| 2           | 2           | OR3969353       | O-Ring D.39.69 x 3.53     |
| 3           | 1           | 326003.030      | Cartridge 50 Mesh (Blue)  |
| 3           | Optional    | 326002.030      | Cartridge 32 Mesh (White) |
| 4           | 1           | OR7463533       | O-Ring D.74.63 x 5.33     |
| 5           | 1           | 02.450.011      | Bowl                      |
| 6           | 1           | 02.450.003      | Back Nut                  |

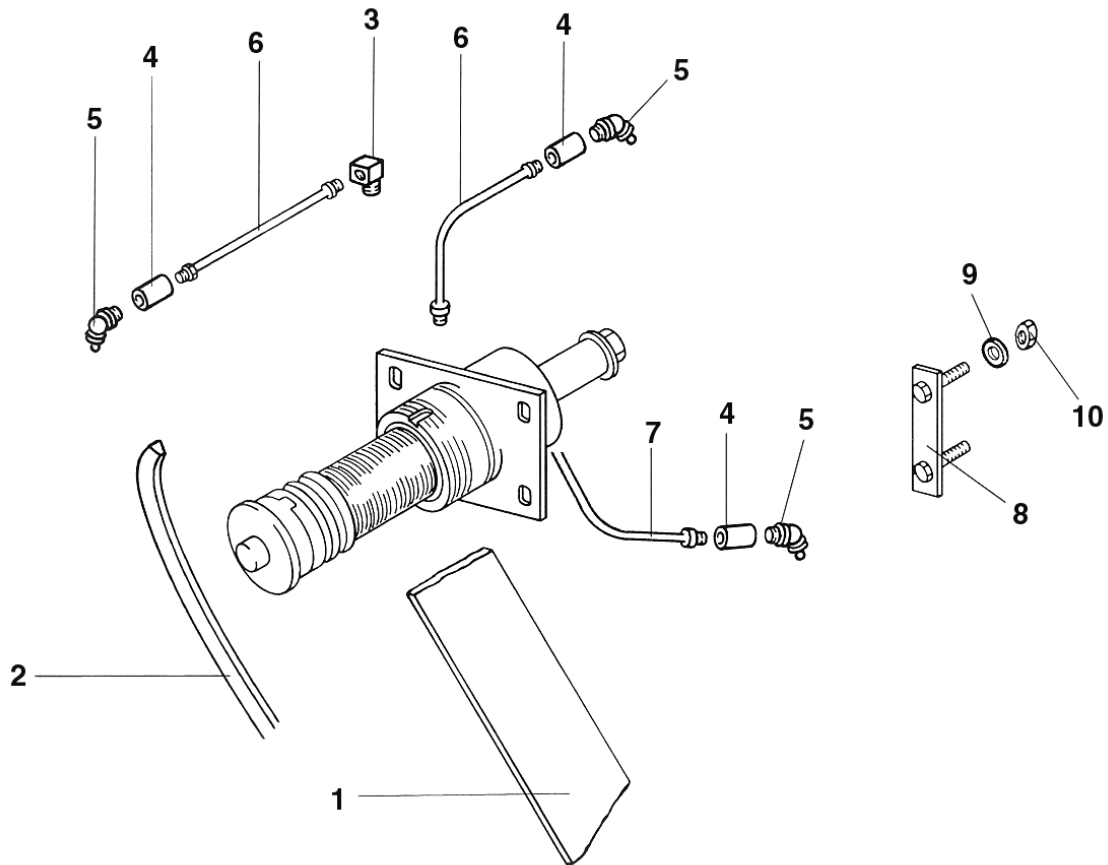
# PUMP & TENSION PULLEY ASSEMBLY



# PUMP & TENSION PULLEY ASSEMBLY

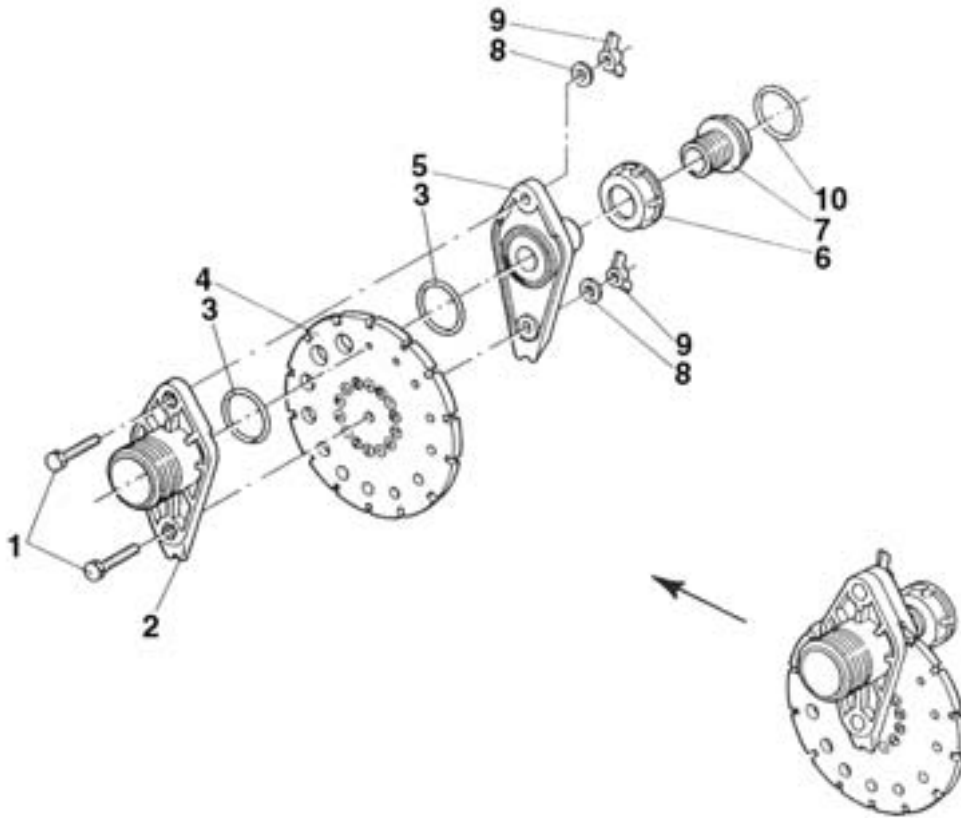
| <u>REF#</u> | <u>QTY.</u> | <u>PART NO.</u> | <u>DESCRIPTION</u>     |
|-------------|-------------|-----------------|------------------------|
| 1           | 2           | TM.010.015      | Plug 10 x 1.5          |
| 2           | 1           | 02.152.010      | Housing, Front Half    |
| 3           | 1           | DOT.10.5587     | Brass Nut M10          |
| 4           | 1           | RP.010.00I      | Washer D.10 INCX       |
| 5           | 17          | TCC.05.25       | Screw M5 x 25          |
| 6           | 17          | RP.005.000      | Washer D.5             |
| 7           | 17          | DOT.05.5587     | Brass Nut M5           |
| 8           | 1           | 02.153.000      | Impeller               |
| 9           | 1           | 02.114.000      | Washer                 |
| 10          | 1           | 00.085.024CS    | Pump Seal Kit          |
| 11          | 1           | 02.151.010      | Housing Back Half      |
| 12          | 2           | 6303-2RS        | Bearing                |
| 13          | 2           | L.05.05.10      | Key 5 x 5 x 10         |
| 14          | 1           | 02.155.010      | Shaft                  |
| 15          | 1           | IO.047.000      | Circlip I.47           |
| 16          | 1           | 02.722.000      | Bushing                |
| 17          | 1           | RP.010.000      | Washer D.10            |
| 18          | 1           | D0.10.5588G     | Nut M10                |
| 19          | 1           | OR.C02.070      | O-Ring CORD D.2 L=700  |
| 20          | 1           | 20.406.000      | Cover                  |
| 21          | 1           | 02.473.000      | Oil Feeder M8          |
| 22          | 2           | 04.111.022      | Chain L=220            |
| 23          | 1           | 02.120.000      | Cap, Drain             |
| 24          | 1           | 02.130.000      | Gasket                 |
| 25          | 1           | 02.116.000      | Two Way Tap            |
| 26          | 1           | OR.003.181      | O-Ring                 |
| 27          | 1           | 02.179.000      | Gasket                 |
| 28          | 1           | 02.113.000      | Three Way Tap          |
| 29          | 1           | 02.723.005      | Washer 2mm             |
| 30          | 1           | 02.963.100      | Support, Tensioner     |
| 31          | 8           | DOT.06.5587     | Brass Nut M6           |
| 32          | 8           | RP.006.000      | Washer D.6             |
| 33          | 4           | TE.006.025T     | Bolt M6 x 25           |
| 34          | 1           | DA.010.0AG      | Nut M10 x 1.5          |
| 35          | 3           | RP.006.018      | Washer D.18            |
| 36          | 2           | RP.012.000      | Washer D.12            |
| 37          | 1           | TF.012.000      | Cap                    |
| 38          | 1           | MT.012.000      | Belleville Washer D.12 |
| 39          | 1           | DA.012.0AG      | Nut M12 x 1.75         |
| 40          | 1           | 02.978.000DX    | Bracket                |
| 41          | 3           | RP.008.024      | Washer D.8 x 24        |
| 42          | 3           | D0.08.5588G     | Nut M8                 |
| 43          | 1           | 02.723.000      | Pulley D.88 x 1 3V     |
| 44          | 2           | 02.723.001      | Washer, 3mm Pulley     |
| 45          | 1           | OR.000.117      | O-Ring 13.1 x 2.62     |
| 46          | 1           | TE.012.040T     | Bolt M12 x 40          |
| 47          | 1           | 02.157.050      | Pump Assembly          |

# FAN SUPPORT



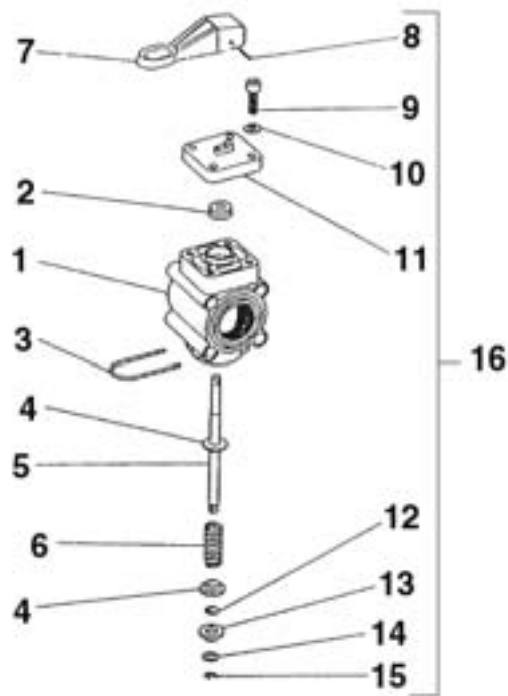
| <u>REF#</u> | <u>QTY.</u> | <u>PART NO.</u> | <u>DESCRIPTION</u>                  |
|-------------|-------------|-----------------|-------------------------------------|
| 1           | 1           | C0.610.J24      | Drive Belt                          |
| 2           | 1           | C0.500.03V      | V Belt                              |
| 3           | 1           | 02.736.000      | Connector 90o                       |
| 4           | 3           | 02.737.000      | Bushing s/n 001025 - 001275         |
| 4           | 1           | 02.737.000      | Bushing s/n 010095 - -----          |
| 5           | 3           | IS.010.001      | Grease Zerk s/n 001025 - 001275     |
| 5           | 1           | IS.010.001      | Grease Zerk s/n 010095 - -----      |
| 6           | 2           | 02.738.040      | Extension L=400 s/n 001025 - 001275 |
| 6           | 1           | 02.738.040      | Extension L=400 s/n 010095 - -----  |
| 7           | 1           | 02.738.030      | Extension L=300                     |
| 8           | 2           | 02.945.000      | Bolt Clamp                          |
| 9           | 4           | RP.012.036      | Washer D.12 x 36                    |
| 10          | 4           | D0.12.5588G     | Nut M12                             |

# DIAL-A-RATE 02150000

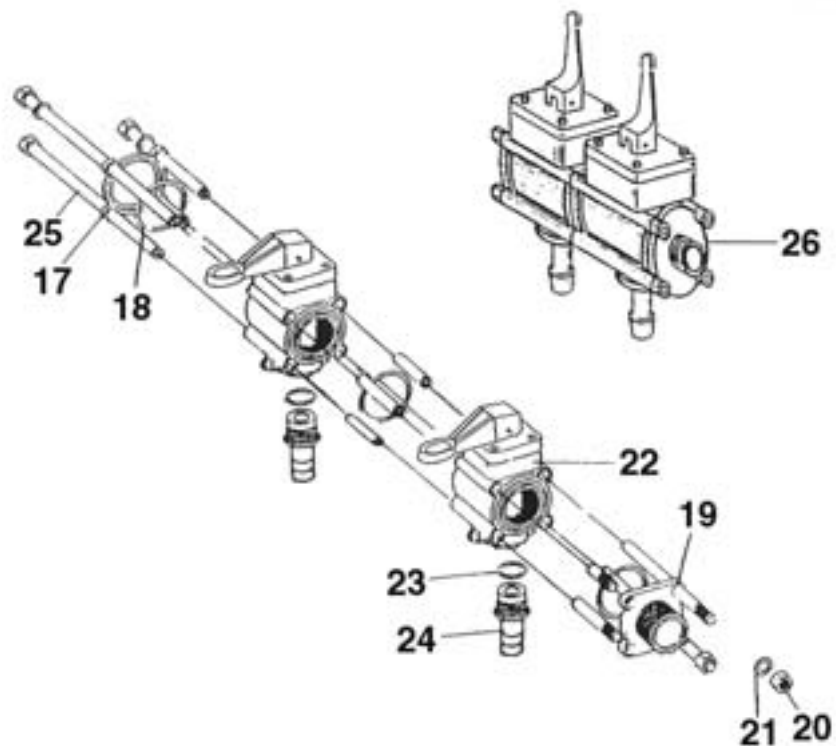


| <u>REF#</u> | <u>QTY.</u> | <u>PART NO.</u> | <u>DESCRIPTION</u>   |
|-------------|-------------|-----------------|----------------------|
| 1           | 2           | TE.006.030I     | Bolt M6 x 30         |
| 2           | 1           | 02.149.000      | Body Male            |
| 3           | 3           | OR.002.062      | O-Ring D.15.6 x 1.78 |
| 4           | 1           | 02.148.000      | Disc                 |
| 5           | 1           | 02.147.000      | Body Female          |
| 6           | 1           | 00.055.045      | Nut                  |
| 7           | 1           | 02.117.000      | Adaptor Nipple       |
| 8           | 2           | RP.006.000      | Washer D.6           |
| 9           | 2           | DF.OTT.006      | Nut M6 Wing          |
| 10          | 1           | 02.349.000      | Gasket               |

# MANUALLY OPERATED VALVE



# MANUAL COMMAND GROUP 2-WAY



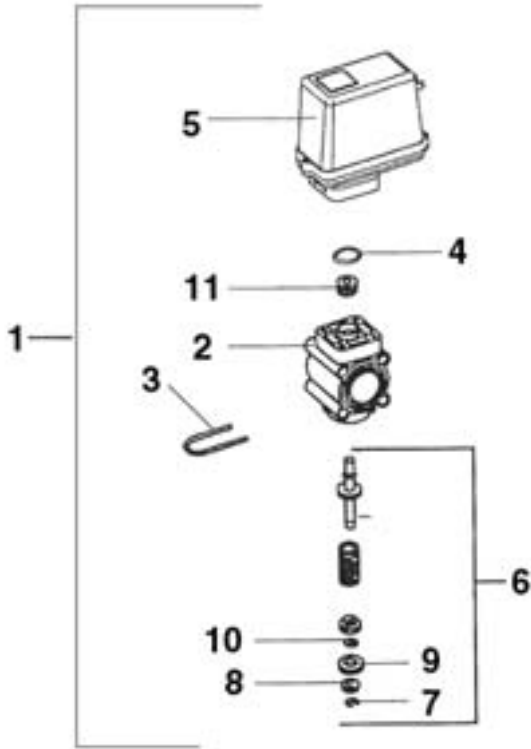
## MANUALLY OPERATED VALVE

| <u>REF#</u> | <u>QTY.</u> | <u>PART NO.</u> | <u>DESCRIPTION</u>      |
|-------------|-------------|-----------------|-------------------------|
| 1           | 1           | 02.390.007      | Body                    |
| 2           | 4           | 02.390.008      | Gasket                  |
| 3           | 1           | 02.390.005      | Clip                    |
| 4           | 2           | 02.390.009      | Cap                     |
| 5           | 1           | 02.390.020      | Pin                     |
| 6           | 1           | 02.390.011      | Spring                  |
| 7           | 1           | 20.108.002      | Lever for Manual Switch |
| 8           | 1           | SE.003.020      | Spring Pin D.3 L=20     |
| 9           | 4           | TCE.005.020     | Cap Screw M5 L=20       |
| 10          | 4           | RP.005.000      | Washer D.5              |
| 11          | 1           | 02.390.021      | Flange                  |
| 12          | 1           | 02.390.016      | O-Ring                  |
| 13          | 1           | 02.390.015      | Washer                  |
| 14          | 1           | 02.390.014      | Washer                  |
| 15          | 1           | 02.390.013      | Stop Ring               |
| 16          | 2           | 20.108.000      | Valve, Manual Control   |

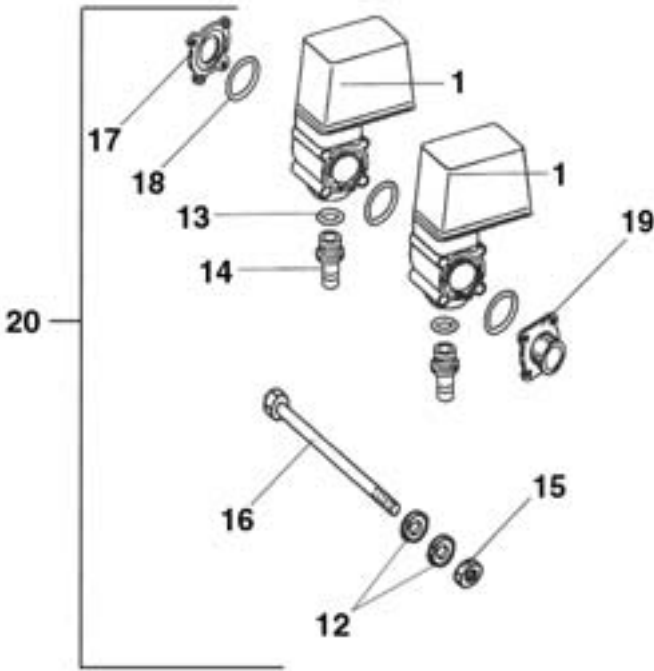
## MANUAL COMMAND GROUP 2-WAY

| <u>REF#</u> | <u>QTY.</u> | <u>PART NO.</u> | <u>DESCRIPTION</u>         |
|-------------|-------------|-----------------|----------------------------|
| 17          | 1           | 02.390.017      | Seal Cap                   |
| 18          | 3           | OR.003.156      | O-Ring                     |
| 19          | 1           | 02.390.018      | Connector                  |
| 20          | 4           | D0.08.5588G     | Nut M8                     |
| 21          | 8           | RP.008.000      | Washer D.8                 |
| 22          | 2           | 20.108.000      | Manually Operated Valve    |
| 23          | 2           | OR.000.130      | O-Ring                     |
| 24          | 2           | 02.406.000      | Nipple D.16                |
| 25          | 4           | TCE.008.150     | Bolt M8 x 150              |
| 26          | 1           | 20.108.01C      | Manual Command Group Assy. |

# OPTIONAL SOLENOID CONTROL



# OPTIONAL SOLENOID COMMAND GROUP





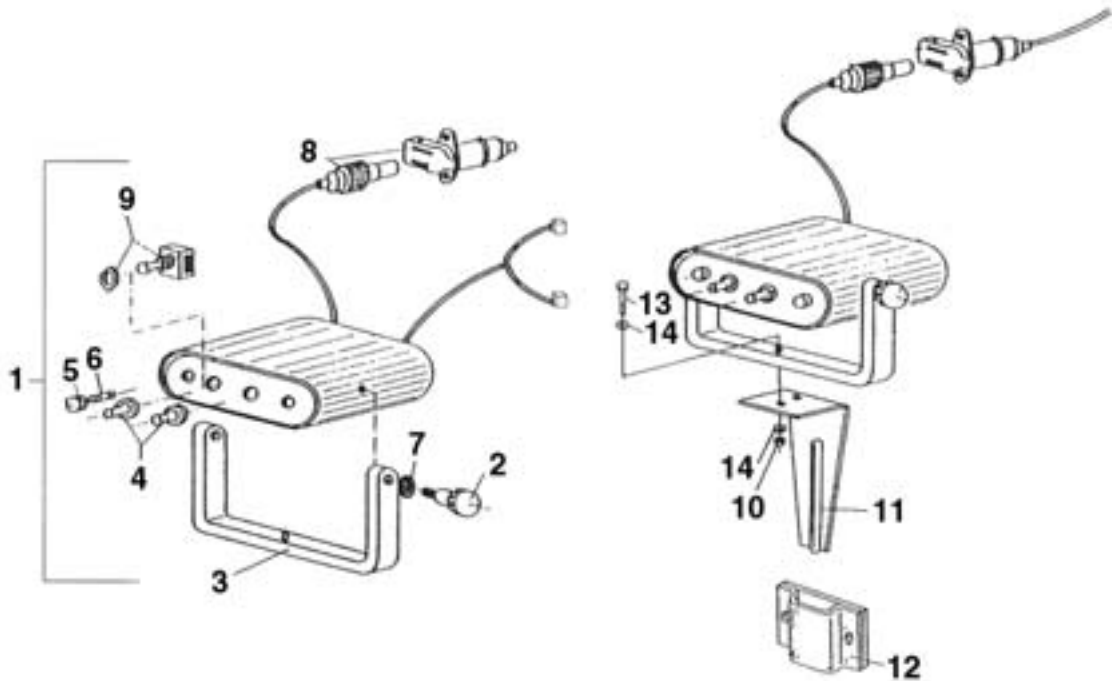
## OPTIONAL SOLENOID CONTROL

| <u>REF#</u> | <u>QTY.</u> | <u>PART NO.</u> | <u>DESCRIPTION</u>      |
|-------------|-------------|-----------------|-------------------------|
| 1           | 1           | 02.390.029      | Solenoid Valve          |
| 2           | 1           | 02.390.007      | Body                    |
| 3           | 1           | 02.390.005      | Clip                    |
| 4           | 1           | OR.002.075      | O-Ring D.18.77 x 1.78   |
| 5           | 1           | 02.390.028      | Motor                   |
| 6           | 1           | 02.390.027      | Stem Assembly           |
| 7           | 1           | 02.390.013      | Lock Clip               |
| 8           | 1           | 02.390.014      | Washer                  |
| 9           | 1           | 02.390.015      | Washer                  |
| 10          | 1           | 02.390.026      | Washer                  |
| 11          | 1           | 02.390.008      | Seal D.6 x 17 x 6 Viton |

## OPTIONAL SOLENOID COMMAND GROUP

| <u>REF#</u> | <u>QTY.</u> | <u>PART NO.</u> | <u>DESCRIPTION</u>              |
|-------------|-------------|-----------------|---------------------------------|
| 12          | 8           | RP.008.000      | Washer D.8                      |
| 13          | 2           | OR.000.130      | O-Ring D.22.22 x 2.62           |
| 14          | 2           | 02.406.000      | Hose Barb D.16                  |
| 15          | 4           | D0.08.5588G     | Nut M8                          |
| 16          | 4           | TCE.008.150     | Bolt M8 x 150                   |
| 17          | 1           | 02.390.017      | Flange                          |
| 18          | 3           | OR.003.156      | O-Ring D.39 x 2.62              |
| 19          | 1           | 02.390.018      | Connector                       |
| 20          | 1           | 02.390.08C      | Solenoid Command Group Assembly |

# OPTIONAL CONTROL BOX FOR SOLENOID VALVE

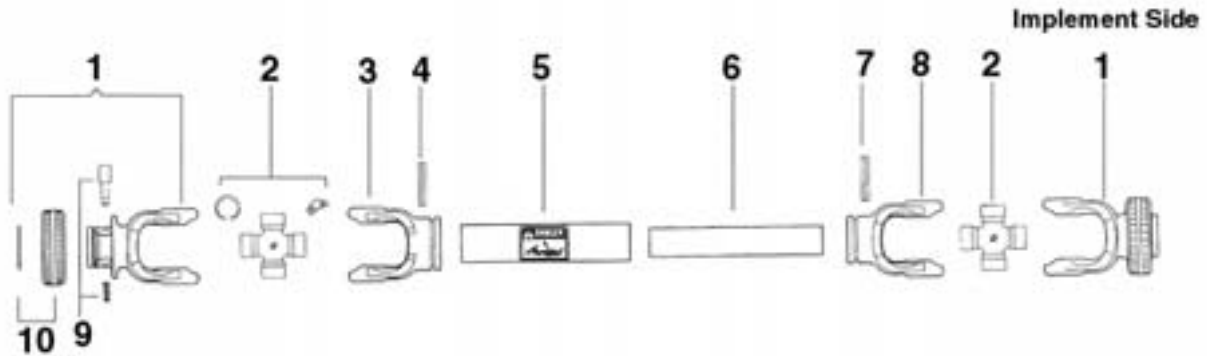


| <u>REF#</u> | <u>QTY.</u> | <u>PART NO.</u> | <u>DESCRIPTION</u>            |
|-------------|-------------|-----------------|-------------------------------|
| 1           | 1           | 02.391.07C      | Control Box Assembly L/Ref. 8 |
| 2           | 2           | 02.391.007      | Knob, Bolt                    |
| 3           | 1           | 02.391.006      | Mounting Bracket for Box      |
| 4           | 2           | 02.391.001      | Switch Cap                    |
| 5           | 2           | 02.391.003      | Panel Fuse Holder             |
| 6           | 2           | 02.391.004      | Fuse 1.25 AMP                 |
| 7           | 2           | RD.006.000      | Washer                        |
| 8           | 1           | 02.391.005      | Plug & Socket Kit             |
| 9           | 2           | 02.391.002      | Double Pole Switch            |

## KIT FOR CONTROL SOLENOID VALVE

|    |   |             |                                   |
|----|---|-------------|-----------------------------------|
| 10 | 1 | DA.008.0AG  | Nut                               |
| 11 | 1 | 20.111.000  | Mounting Bracket Electric Control |
| 12 | 1 | 20.107.000  | Support Control Assembly          |
| 13 | 1 | TE.008.025T | Bolt                              |
| 14 | 2 | RP.008.024  | Washer D.8 x 24                   |

# BONDIOLI & PAVESI PTO DRIVE LINE 7105061FFT077



| <u>REF#</u> | <u>QTY.</u> | <u>PART NO.</u> | <u>DESCRIPTION</u>            |
|-------------|-------------|-----------------|-------------------------------|
| 1           | 1           | 572050351       | RS Collar Yoke 1-3/8 6-Spline |
| 2           | 2           | 41205           | Cross Kit Assembly #5         |
| 3           | 1           | 204056860       | Outer Tube Yoke #5            |
| 4           | 1           | 34105300        | Roll Pin O.T. #5              |
| 5           | 1           | 225700860       | Outer Drive Tube #5           |
| 6           | 1           | 225110860       | Inner Drive Tube #5           |
| 7           | 1           | 341002000       | Roll Pin I.T. #5              |
| 8           | 1           | 204056861       | Inner Tube Yoke #5            |
| 9           | 2           | 403000001       | Quick Disconnect Pin Kit      |
| 10          | 2           | 240003051       | RS Collar 5-6                 |
| 11          | 1           | 572050361       | RS Collar Yoke 1-3/8 6-Spline |
|             | 1           | 5F05086FF       | Shield Kit With Bearings      |

# LIMITED WARRANTY



GEARMORE, INC., warrants each new Gearmore product to be free from defects in material and workmanship for a period of twelve (12) months from date of purchase to the original purchaser. This warranty shall not apply to implements or parts that have been subject to misuse, negligence, accident, or that have been altered in any way.

Our obligation shall be limited to repairing or replacement of any part, provided that such part is returned within thirty (30) days from date of failure to Gearmore through the dealer from whom the purchase was made, transportation charges prepaid.

This warranty shall not be interpreted to render us liable for injury or damages of any kind or nature, direct, consequential or contingent, to person or property. This warranty does not extend to loss of crops, loss because of delay in harvesting or any other expenses, for any other reasons.

Gearmore in no way warrants engines, tires, or other trade accessories, since these items are warranted separately by these respective manufacturers.

Gearmore reserves the right to make improvements in design or changes in specification at any time, without incurring any obligations to owners or units previously sold.

GEARMORE, INC.  
13477 Benson Ave.  
Chino, CA 91710

Always refer to and heed machine operating warning decals on machine.

*The serial number of this product is stored in our computer database, thus submitting a warranty registration card is not required.*