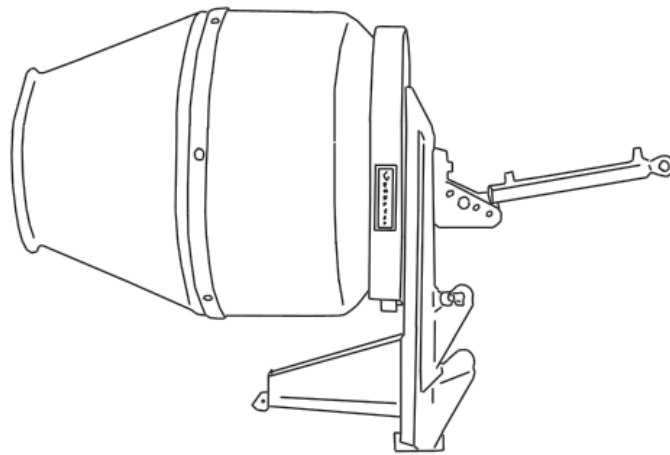




# MIXER



## Assembly, Operation & Parts Manual For Model G11M

May 2006

# TABLE OF CONTENTS

Introduction .....	1
Welcome .....	1
Training .....	2
Before Operating Mixer .....	2
Set-Up .....	3
Sizing PTO Shaft .....	4
Maintenance .....	5
Lubrication .....	5
Cleaning & Storage .....	5
Safety Tips .....	5
Operational Safety .....	6
Operation .....	7
Mixer Assembly .....	8-9
Driveline Assembly .....	10
Limited Warranty .....	11

# INTRODUCTION

We welcome you as a new owner of a Gearmore Mixer. Please read the following instructions and refer to them when required.

This manual contains valuable information about your Mixer. It has been carefully prepared to give you helpful suggestions for operating, adjustments, servicing, and ordering repair parts.

Keep this manual in a convenient place for quick and easy reference. Study it carefully. You have purchased a dependable and sturdy Mixer, but only by proper care and operation can you expect to receive the service and long life designed and built into it.

It is the purchaser and/or operator's responsibility to...

- Read and understand the information contained in this manual.
- Operate, lubricate, assemble and maintain the equipment in accordance with all instructions and safety procedures in this manual.
- Inspect the equipment and replace or repair any parts that are damaged or worn which under continued operation would cause damage, wear to other parts, or cause a safety hazard.
- Return the equipment or parts to the authorized dealer, from where it was purchased, for service or replacement of defective parts that are covered by warranty. Gearmore may inspect equipment or parts before warranty claims are honored.

Sometime in the future your mixer may need new parts to replace those that are worn or broken. If so, go to your dealer and provide him with the model and part number.

## CUSTOMER INFORMATION

**NAME:** \_\_\_\_\_

**PURCHASED FROM:** \_\_\_\_\_

**DATE OF PURCHASE:** \_\_\_\_\_

**MODEL NUMBER:** \_\_\_\_\_

**SERIAL NUMBER:** \_\_\_\_\_

# TRAINING



- ❑ To avoid accident or injury, **do not** allow anyone to operate this equipment without proper instructions. Any person who operates this equipment must be instructed in and be capable of the safe operation of the unit, its attachments and all controls.



- ❑ **DO NOT** allow children to operate machine, or adults to operate it without proper instructions.

Read this operator's manual and the manual provided with your tractor carefully and follow all directions and procedures.

Know your controls. Learn how to stop the tractor, engine, and mixer quickly in case of an emergency.

## BEFORE OPERATING THE MIXER

1. Inspect for damage and loose or missing parts. Make sure all fittings and drive components are secure.
2. Lubrication - *See Lubrication Section*
3. Check drum for any foreign objects.
4. Operate only in daylight or good artificial light.
5. Ensure implements are properly mounted, adjusted and in good operating condition.
6. Ensure all PTO and other safety shielding is properly installed and in good condition.
7. Read and observe **all safety decals** on the tractor and implements.



### WARNING

**Always** wear relatively tight and belted clothing when operating implement. Loose clothing should not be worn, as it could get caught in the moving parts or controls. Wear sturdy, rough-soled work shoes and protective equipment for eyes, hands, hearing, and head. **Never** operate tractor or implements in bare feet, sandals, or sneakers.

**Never** permit any person other than the operator to ride on board the tractor at any time. **DO NOT** allow riders on implement at any time.

# SET-UP

## TO MOUNT MIXER

1. Attach the mixer to the tractor lower lift arms. Raise the 3-point hitch until the tractor PTO shaft and the mixer input shaft are horizontal.
2. Attach the hydraulic cylinder to the tractor top link bracket.
3. Place the mixer in the dump position and attach the hydraulic cylinder to the mixer.
4. After attaching the hydraulic cylinder, retract it so the mixer is in the load position.
5. Measure the PTO shaft, as it may be necessary to cut it to the correct length and then connect to the mixer and tractor. (*See page 4*)
6. Take up any side movement with your check chains and your mixer is ready for use.

**IMPORTANT NOTE:** When operating the mixer, use the hydraulic cylinder for loading and dumping functions. The 3-point hitch should always be left at the position where the driveshaft is in a horizontal position. The driveshaft must not be operated at angles of more than 25°

When making concrete, for the best mix we advise introducing material in the following order:

1. Water
2. Concrete
3. Gravel

# SIZING PTO SHAFT

## STEP 1:

Cutting the PTO shaft to length.

**NOTE:** Be sure to cut equal lengths of each PTO shaft section. Clamp end of PTO shaft in a vice and cut off shield where marked. (*Fig. 1-A & 1-B*)

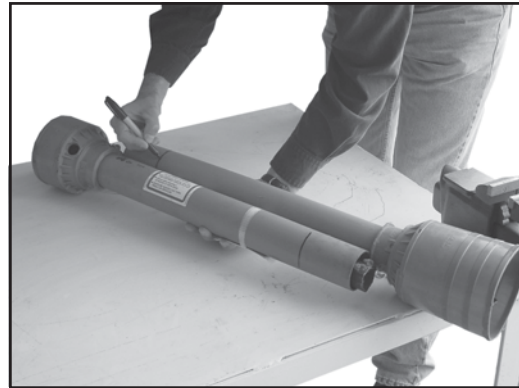


Figure 1-A

## STEP 2:

Using cut section of the shield as a guide, cut shaft off the same amount (*Fig. 2*)

## STEP 3:

Repeat steps 1 and 2 for other PTO shaft section.



Figure 1-B

## STEP 4:

Use a file to deburr PTO shafts. Clean up all chips, burrs, and fillings from both ends of the PTO shaft.



Figure 2

# MAINTENANCE

## LUBRICATION

### DRIVESHAFT:

The driveshaft must be lubricated before the mixer is put into use. After that, grease every 8 hours. It is also necessary from time to time to untelescope the driveshaft to clean and re-grease tubings.

### GEAR DRIVE:

Put heavy coating of grease on gear drive to reduce wear and noise.

## CLEANING & STORAGE

1. Wash drum with water after each use.
2. Never let hardened concrete build up on paddles and in the drum.
3. Check mixer for needed repairs before using again.

## SAFETY TIPS

- Always wear relatively tight and belted clothing when operating mixer. Loose clothing should not be worn, as it could get caught in the moving parts or controls of mixer.
- Mixer should be operating only by qualified personnel.
- When starting mixer, always maintain a safe distance from moving parts.
- Never leave mixer unattended while it is running.
- Keep hands, feet and clothing away from all moving parts.
- DO NOT** operate this equipment unless all guards and safety devices are attached and in place.

# SAFETY INFORMATION

## OPERATIONAL SAFETY:

- ❑ Guards and safety shields are for your protection. **DO NOT** operate equipment unless they are in place.
- ❑ Always operate tractor PTO at engine idle
- ❑ Disengage tractor PTO and shift into neutral before attempting to start engine.
- ❑ Read and observe all safety decals on the tractor and mixer.
- ❑ **NEVER** allow anyone, other than the operator, within 25' of machine while it is in operation.
- ❑ **DO NOT** stop or start suddenly when going uphill or downhill. Avoid operation on steep slopes.
- ❑ Be alert for holes in terrain and other hidden hazards. Always drive slowly over rough ground.
- ❑ Reduce speed on slopes and in sharp turns to prevent tipping or loss of control. Be careful when changing directions on slopes.
- ❑ Take all possible precautions when leaving tractor unattended:
  - √ Disengage PTO
  - √ Lower mixer
  - √ Shift into neutral
  - √ Set parking brake
  - √ Stop engine
  - √ Remove key from ignition
- ❑ Front tractor weights or front tire ballast should be used to enhance front-end stability on small tractors.
- ❑ **NEVER** put hands or hand held tools in mixer while PTO is engaged and tub is turning. Failure to follow warning can result in personal injury or damage to the mixer.



# OPERATION



## WARNING

**NEVER** operate mixer without gloves and eye protection. Always wear relatively tight fitting clothing.

1. Make sure mixer is properly assembled and secure to 3-point hitch.
2. Make sure there are no loose or missing parts.
3. If possible, lower mixer to the ground for better stability.

**NOTE:** Make sure the driveline is at no more than a 25° angle.

4. Engage tractor PTO at engine idle.

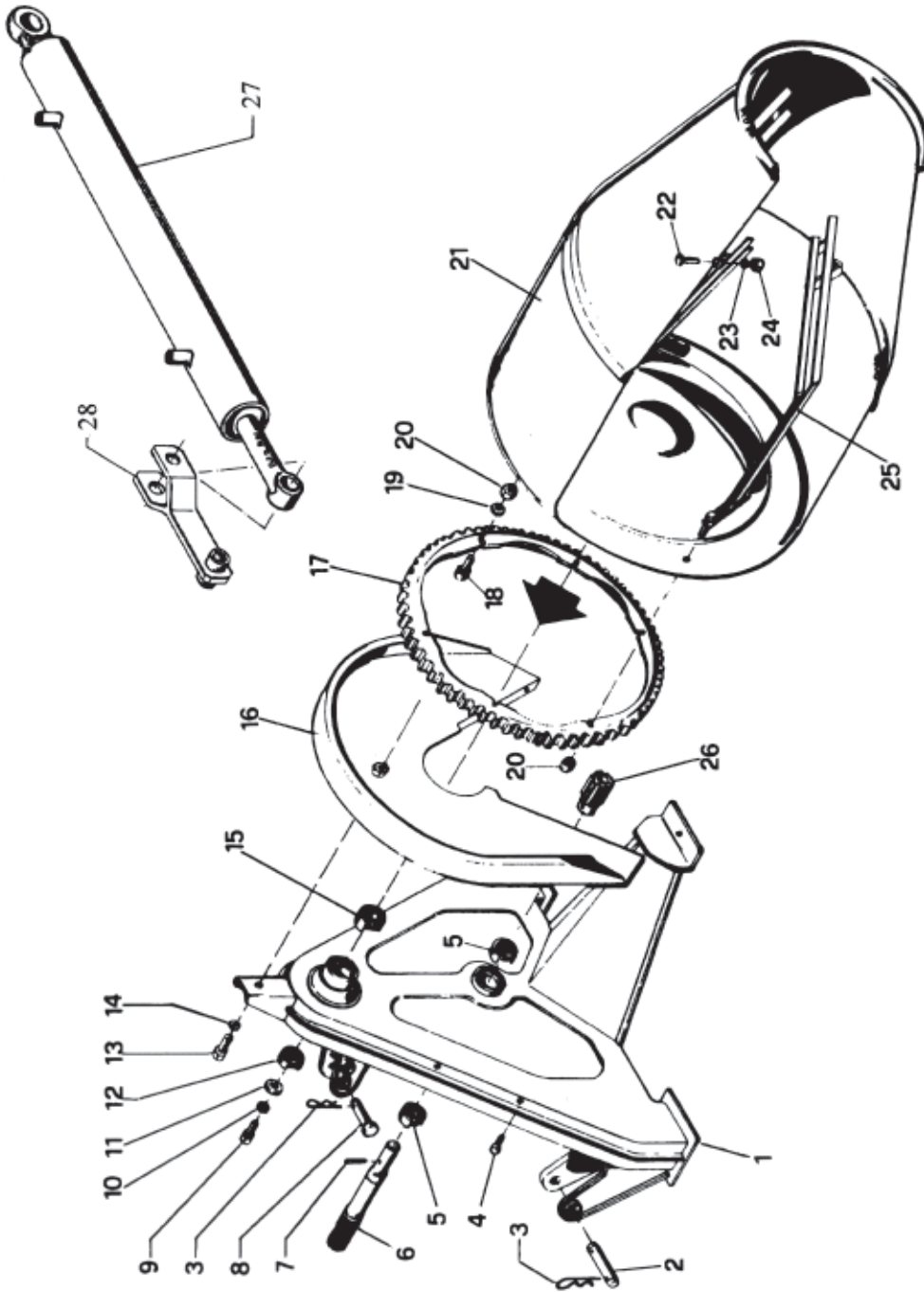
**NOTE:** Never run PTO above engine idle.

5. Place material to be mixed in tub.

**NOTE:** When making concrete, for best mix, we advise introducing material in the following order: water, concrete and then gravel.

6. When mixture is ready, disengage PTO and use hydraulic cylinder to dump.

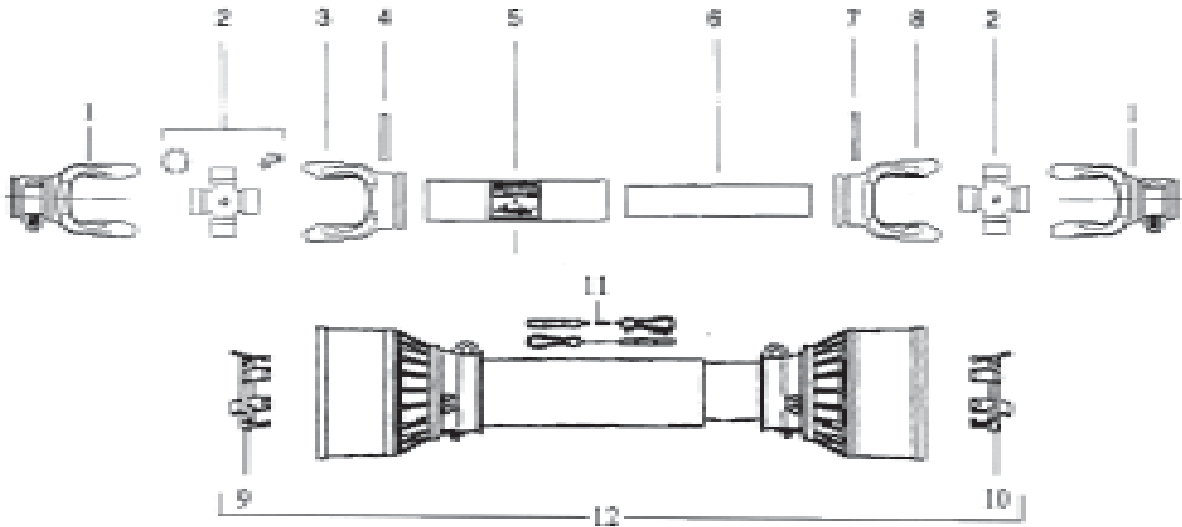
# MIXER ASSEMBLY



# MIXER ASSEMBLY

<u>REF #</u>	<u>QTY.</u>	<u>PART NO.</u>	<u>DESCRIPTION</u>
1	1	T003024	Frame
2	2	P004025	Pivot Pin
3	5	C019005	Cotter Pin
4	4	V003194	Self-tapping Screw
5	2	6205-2RS	Bearing
6	1	A005035	Driving Shaft
7	1	S006002	Outer Split Pin
7	1	S006001	Inner Split Pin
8	2	P004003	Pivot Pin
9	1	V003037	Bolt M16 x 35 L.H. Threaded
10	1	R004006	Lock Washer
11	1	R005025	Washer
12	1	6008-2RS	Bearing
13	1	V003003	Bolt M8 x 16
14	1	R004001	Lock Washer
15	1	6009-2RS	Bearing
16	1	C006016	Cover
17	1	R009009	Ring Gear
18	3	V003022	Bolt M10 x 30
19	6	R005012	Washer
20	12	D001002	Nut
21	1	T010124	Tub
22	3	V003002	Bolt M10 x 20
23	3	R004002	Lock Washer
24	3	D001002	Nut
25	3	P001029	Splinger Blade
26	1	R009010	Toothed Pinion
27	1	C013005	Cylinder, Double Acting
28	1	P011005	Extension, Top Link (Optional)

# DRIVELINE ASSEMBLY C005210



<u>REF #</u>	<u>QTY.</u>	<u>PART NO.</u>	<u>DESCRIPTION</u>
1	2	507010351	Yoke 1- <sup>3</sup> / <sub>8</sub> " , 6-Spline
2	2	41201R	Cross Kit #1
3	1	204016851	Outer Tube Yoke
4	1	341036000	Roll Pin
5	1	225020933	Outer Drive Tube
6	1	225010933	Inner Drive Tube
7	1	341037000	Roll Pin
8	1	204016852	Inner Tube Yoke
9	1	255010005	Outer Shield Bearing
10	1	255010006	Inner Shield Bearing
11	2	252000001	Safety Chain
12	1	5N01086N1	Complete Shield

# LIMITED WARRANTY



GEARMORE, INC., warrants each new Gearmore product to be free from defects in material and workmanship for a period of twelve (12) months from date of purchase to the original purchaser. This warranty shall not apply to implements or parts that have been subject to misuse, negligence, accident, or that have been altered in any way.

Our obligation shall be limited to repairing or replacement of any part, provided that such part is returned within thirty (30) days from date of failure to Gearmore through the dealer from whom the purchase was made, transportation charges prepaid.

This warranty shall not be interpreted to render us liable for injury or damages of any kind or nature, direct, consequential or contingent, to person or property. This warranty does not extend to loss of crops, loss because of delay in harvesting or any other expenses, for any other reasons.

Gearmore in no way warrants engines, tires, or other trade accessories, since these items are warranted separately by these respective manufacturers.

Gearmore reserves the right to make improvements in design or changes in specification at any time, without incurring any obligations to owners or units previously sold.

GEARMORE, INC.  
13477 Benson Ave.  
Chino, CA 91710

Always refer to and heed machine operating warning decals on machine.

*To validate the warranty on this product, please log-in to our website - [www.gearmore.com](http://www.gearmore.com).  
You will find "warranty registration" listed at the top of our homepage.*