



# AGRICULTURAL TRANSPORT KIT

OWNER/OPERATOR  
MANUAL



GO THE DISTANCE.



*Advanced Aeration Systems*







# MANUAL



## TABLE OF CONTENTS

### **General Information:**

Holland Companies .....	1
Customer Letter .....	2
Serial Number Information .....	3

### **Warranty Information:**

Warranty Process .....	3
Customer Service Request .....	4
Warranty Statement .....	5

### **Operating/Installation Instructions:**

Safety Instructions .....	6
---------------------------	---

### **Maintenance/Replacement Instructions:**

Tire Maintenance and Replacement .....	7
Bearing Maintenance .....	7
Greasing Maintenance .....	7
Maintenance Torque Values .....	7

### **Comparison Charts:**

Transporter Summary Chart .....	8
Transporter Wheel/Bearing Chart .....	9

### **Replacement Parts:**

PT6600 Diagram .....	10
PT6600 Chart .....	11
PT6700 Diagram .....	12
PT6700 Chart .....	13
PT9700 Diagram .....	14
PT9700 Chart .....	15
PT9701 Diagram .....	16
PT9701 Chart .....	17
Pre 1999 Accessory Kits PT6700 .....	18









**AerWay®** information is available at the following companies:

**Holland Equipment Limited**

Norwich, Ontario, N0J 1P0

Tel. (519) 863-3414

Fax (519) 863-2398

**Holland U.S.A.**

Wylie, Texas, 75098

Tel. (972) 442-3556

Fax (972) 442-2092



**Holland Hitch Western Ltd.**

Surrey, B.C., V3S 5K1

Tel. (604) 574-7491

Fax (604) 574-0244

**Holland Hitch Australia Ltd.**

Melton Victoria

Tel. 1-03-743-6799

Fax 1-03-743-6763

For the name of our nearest dealer call

**1-800-457-8310**

feel free to visit our website at

[www.aerway.com](http://www.aerway.com)

or e-mail us at

[aerway@aerway.com](mailto:aerway@aerway.com)







**Dear Customer:** Welcome to the **AerWay®** family.

The **AerWay®** is designed, manufactured and sold by the Holland Group of Companies. The Holland Group is a world wide organization with manufacturing facilities in North America, and around the globe.

The parent company originated in 1911 in Corsica, South Dakota producing hitches for horse drawn agricultural equipment. The company moved to Holland, Michigan in 1920 and became the Holland Hitch Company. As the transport and agricultural markets developed and grew, the company developed products to support these industries.

The **AerWay®** was developed in the 1970's by a farmer who understood the tremendous benefits of reducing soil compaction, water runoff, increasing fertilizer utilization, and supplying oxygen to the root zone of his crops.

Farmers on every continent in the world now benefit from the patented **AerWay's** unique ability to shatter the soil vertically and horizontally as it twists its way through the ground.

The Holland Group welcomes you to the worldwide **AerWay®** family of satisfied users.

Your new **AerWay®** is designed to meet your agricultural conservation tillage and aeration requirements. Its ease of operation and low maintenance requirements will give you many years of trouble free operation.

Make certain that **you read and understand** the important instructions for assembly, adjustments, operation and maintenance contained in this manual. If there are any instructions that you do not fully understand, contact either your Dealer or Holland personnel for clarification prior to using the unit.

When in need of replacement parts, please specify the model and serial number of your **AerWay®** to your dealer. The serial number is stamped on the right, top surface of the front cross tube of the main frame. For Pull Type units the serial number is stamped on the right, front surface of the front cross tube on the main frame.

Regular preventative maintenance will keep your **AerWay®** in proper operating condition, and provide you with many years of reliable, trouble free service.

Should you require further clarification or assistance, please contact your local **AerWay®** dealer or one of the **AerWay®** information locations listed on the previous page.

This Operator's Manual is designed to be used in conjunction with our **AerWay®** Rigid Frame Models Owner/Operator Manual (Part No. XL-AW-A-67260-A).

***Remember to complete your warranty registration card and mail it to the nearest AerWay®/Holland locations listed on page 1.***



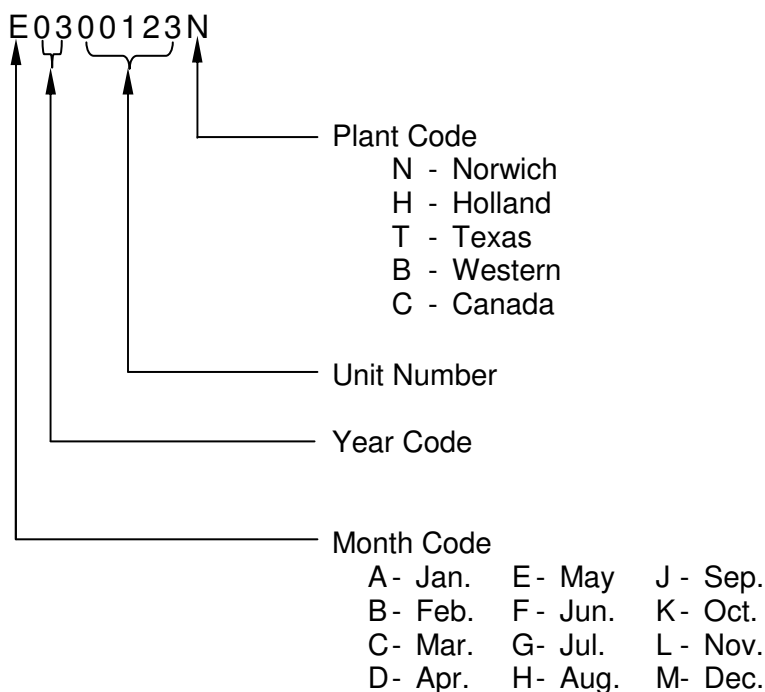
## Warranty Application and Processing

In the event of a potential warranty claim, be sure to identify and record the AerWay® **Model Number** (e.g. AW12CQ-2B38-DT67) and **Serial Number** (e.g. B0100123N). The end user or servicing dealer should complete the Customer Service Request form, located on the following page, and Fax or Mail a copy to your nearest Holland/**AerWay®** location listed on page 1.

Holland's policy is to review all warranty claims and applicable information prior to the processing of that claim. If parts are required to be returned to a Holland location for inspection and analysis, a return number will be assigned. This number must be identified on the part(s) and the shipping paper work. Claims will be resolved in a timely manner, once all information is provided and the parts or product have been inspected.

If replacement part(s) or product is required immediately, contact your local **AerWay®** dealer or one of the four **AerWay®/Holland** locations listed on page 1. The part(s) or product will be expedited to the end user and invoiced. If the warranty claim is accepted, the account will be credited appropriately.

### Serial Number Logic







## Customer Service Request



Holland Equipment Limited  
20 Phoebe St., Norwich, Ont., N0J 1P0  
Ph. (519) 863-3414 Fax. (519) 863-2398  
1-800-457-8310



- ☐ Warranty  
☐ Product Return  
☐ Quality  
☐ Request/Customer Suggestion

CSR # : \_\_\_\_\_  
Authorization \_\_\_\_\_  
Number : \_\_\_\_\_

Customer Information		Machine Details	
Company Name	- _____	Model Number	- _____
Customer Contact	- _____	Serial Number	- _____
Address	- _____	Into Service Date	- _____
City	- _____	Purchased From	- _____
State/Province	- _____	New unit	Used unit
Postal Code	- _____	<b>Operating Information</b>	
Country	- _____	Ballast Weight	- _____
Phone Number	- _____	Operating Speed	- _____
Fax Number	- _____	Tractor HP	- _____
Email Address	- _____	Primary Crop	- _____
<b>Dealer Information</b>		Primary Use	- _____
		Roller Offset Angle	- _____
		Soil Conditions	- _____
		<b>Other Tools attached to The AerWay</b>	
Selling Dealer		- _____	
Selling Dealer Contact		- _____	
Address		- _____	
City		- _____	
State/Province		- _____	
Postal Code		- _____	
Country		- _____	
Phone Number		- _____	
Fax Number		- _____	
Email Address		- _____	
<b>Request / Failure Information</b> (describe the Request / failure and any relevant information)			
<b>Corrective Action/ Repair</b> (describe the action taken and/or requested to resolve issue)			

CSR Submitted By \_\_\_\_\_

Date Created \_\_\_\_\_

Version 060304





## ***Holland AerWay® Warranty***

Holland warrants all AerWay® products manufactured by it, when properly applied and installed, to be free from defects in material and workmanship under normal use and service for a period of one (1) year from the date of manufacture,

This warranty is void with respect to any product which has been altered from its manufactured condition, such as intentional modification, accident, corrosion, misuse, failure to provide necessary and reasonable maintenance and is exclusive of normal wear. This warranty does not cover tire wear or breakage due to unfavorable soil conditions.

If any AerWay® or AerWay® component part is found to have a defect in material or workmanship, Holland will cover the cost to repair or replace the product or part. Holland will provide a reasonable allowance for removal, and repair or replacement, and will provide parts or reimbursement at the acquisition cost, provided that this does not exceed the suggested amount.

All product or parts covered by this warranty must be made available to Holland and/or returned for review and evaluation. Authorization from Holland must be obtained prior to returning any product or parts, with freight charges prepaid.

Holland shall not be liable, in any event, for proximate, consequential, special or other damages, including, but not limited to, damages for loss of production, loss of profit, loss or opportunity, or injury to persons or property arising out of any breach of this warranty.

This warranty does not suggest nor imply suitability for any particular application, nor expected life span of the product in any particular way.

THERE ARE NO WARRANTIES, EXPRESSED OR IMPLIED, INCLUDING THE WARRANTY OF MERCHANTABILITY, WARRANTY OF FITNESS FOR A PARTICULAR PURPOSE, OR ANY OTHER IMPLIED WARRANTY ARISING BY STATUE, COURSE OF DEALINGS OR USAGE OF TRADE, EXTENDING BEYOND THAT SET FORTH ABOVE.

***Protect your Investment! Remember to return your Warranty Registration Card.***







## Operator Safety Instructions *Work Safely – Follow these Rules!*

**A Careful Operator is the Best Insurance Against an Accident.**

**CAUTION:** Before operating any equipment, Read and Understand this Operators Manual

- 1) Do not wear loose fitting clothing that may catch on moving parts
- 2) Use extreme care when making adjustments
- 3) Always use the proper tools or equipment for the job at hand.
- 4) When working under or around the AerWay® unit, ensure the frame and tines are supported safely and securely.
- 5) Ensure that all tools, parts and maintenance equipment are clear of the AerWay® after servicing
- 6) Before and during operation the area should be checked to insure that it is clear of obstacles, hazards and personnel.

**KNOW WHERE and HOW DEEP YOUR GAS, WATER, ELECTRIC, and TELEPHONE LINES ARE BURIED.**



- 7) Extreme caution should be exercised when operating close to ditches, fence or on hillsides.

**CAUTION:** Do not over ballast the weight box. This may result in the loss of front steering ability and loss of tractor stability. In some cases front counter balance weights may be required.



**DANGER:** AerWay® tines are sharp and, if carelessly handled or improperly used, can cause serious injury or death.

- 8) **No riders should be permitted on the tractor.** Never allow anyone to ride on the AerWay® implement at any time.
- 9) Do not attempt to remove obstructions or clear debris while the AerWay® is in motion.
- 10) Hands, feet, clothing and other objects must be kept away from all moving parts.

### **Safety Instruction for Transportation**

- 11) For pull type units, always place the AerWay® in the “**transport position**” when moving extended distances. (Engage manual transport lock if so equipped.)
- 12) The tractor used for the proper transportation should be equal in size and horsepower to the unit used for field operations.
- 13) Travel at a reasonable speed. This will allow the operator to maintain complete control of the tractor and implement at all times. Do not exceed 15 mph (24 km/h).
- 14) AerWay® transporters are only intended for off road operation.



## ***RECOMMENDED MAINTENANCE AND LUBRICATION***

1) Lubricate bearings daily after having used the equipment. In aggressive conditions, you may need to lubricate more frequently. This will purge contaminants out of the bearing and provide for a fresh barrier. Lubricate at the end of the season or when putting the equipment in storage for extended periods of time. This will purge moisture out of the bearing. The fresh grease will act as a corrosion inhibitor thereby preventing rust and the abrasive particles that result and act as a grinding compound in a rotating bearing.

NOTE: In all cases, the effectiveness of the re-lubrication process is increased by having this occur while the bearing is being rotated. This insures that the fresh grease will be evenly distributed throughout the bearing while purging the contaminated grease. Rotation at hand speed is sufficient for this. Re-greasing should continue until fresh grease is visible. Many customers prefer to perform above maintenance at the end of each day.

2) Wheel Bearings in Lift Assembly should be disassembled and bearings packed with grease once a year. The hubs come with a factory installed grease zerk for greasing the hub through out the season. For aggressive conditions grease should be liberally put in the hubs so contamination will not reach the bearings. This should be completed at every usage for aggressive conditions.

3) Grease all pivot points on the AerWay at the end of each day. Be sure to operate mechanism after greasing to allow grease to reach around the pin area. All pins should be removed once a year and grease applied to pin to prevent premature corrosion. This is a good time to also inspect pins and holes for wear and replace as necessary.

### 4) Torque Value for Wheel Bolts/Nuts

<b>Stud Size</b>	<b>Torque Value FT/LBS</b>
7/16"	60 – 70
1/2 "	75 – 85
9/16"	135 – 145
5/8"	160 – 180





## AerWay Transporter Kits Operating Summary

	AW-PT6600	AW-PT6700	AW-PT6700-04	AW-PT9700	AW-PT9701
		STANDARD DUTY	HEAVY DUTY	STANDARD DUTY	HEAVY DUTY
CAPACITY = (A/W + PT KIT + BALLAST +EXTRA EQUIPMENT)	7100 LB.	11500 LB.	11500 LB.	16300 LB.	16300 LB.
MAX VERTICAL TONGUE LOAD	2300 LB.	3500 LB.	3500 LB.	5000 LB.	5000 LB.
MAX TIRE LOAD	4800 LB.	8000 LB.	8000 LB.	11300 LB.	11300 LB.
SHIPPING WEIGHT	1,000 LBS	1,380 LBS	1,950 LBS	2,000 LBS	2,245 LBS
FRONT TOW HITCH	FABRICATED	XB-64374	XB-64374	XB-64374	XB-63454
		CAT 111 PERFECT	CAT 111 PERFECT	CAT 111 PERFECT	CAT#4 HITCH
JACK LEG	XB-64942	XA-63609	XA-63609	XA-63609	XA-63609
	#5,000 SWIVEL	BINKLEY 48000 SERIES	BINKLEY 48000 SERIES	BINKLEY 48000 SERIES	BINKLEY 48000 SERIES
		STATIC LOAD #12,000 LBS	STATIC LOAD #12,000 LBS	STATIC LOAD #12,000 LBS	STATIC LOAD #12,000 LBS
		LIFT CAPACITY #10,000 LBS	LIFT CAPACITY #10,000 LBS	LIFT CAPACITY # 10,000 LBS.	LIFT CAPACITY # 10,000 LBS.
SAFETY CHAIN	XB-65917	XB-65918	XB-65918	XB-65918	XB-65919
CAPACITY	# 10,000 CAPACITY	# 20,000 CAPACITY	# 20,000 CAPACITY	# 20,000 CAPACITY	# 30,000 CAPACITY
REAR HITCH	XA-66944	XA-65333	XA-66584	XA-65333	XA-66584
(self leveling drawbar)	Harrow Hitch STANDARD	STANDARD	STANDARD	STANDARD	STANDARD
TURNBUCKLE	XA-66229	XA-66202	XA-66202	XB-65912	XA-65232
(TOP LINK)					
HYD. CYLINDER	XB-65272	XB-66260	XB-66260	XB-63278	XB-63278
	3.0" BORE	3.5" BORE X 16" STROKE	3.5" BORE X 16" STROKE	4.0" X 16" STROKE	4.0" X 16" STROKE
	X 12.00" STROKE	HOLDING VALVE	HOLDING VALVE	HOLDING VALVE	HOLDING VALVE
TIRE & RIM	XB-66222 - (4)	XB-64974 (4)	XB-67406 (4)	XB-65107 (4)	XA-66620 (4)
TIRE	670 X 15 - 4 PLY	9.5 X 15, 8 PLY	9.5 X 15, 8 PLY	12.5 X 15, 10 PLY	12.5 X 16, 14 PLY
RIM	15 X 5 - 5 BOLT	15 X 8 - 6 BOLT	15 X 8 - 8 BOLT	15 X10 - 6 BOLT	16 X 10 - 8 BOLT
APPLICATION	8', 10', 12'	15' AND 20'	15' AND 20'	15' AND 20'	25' AND 30'



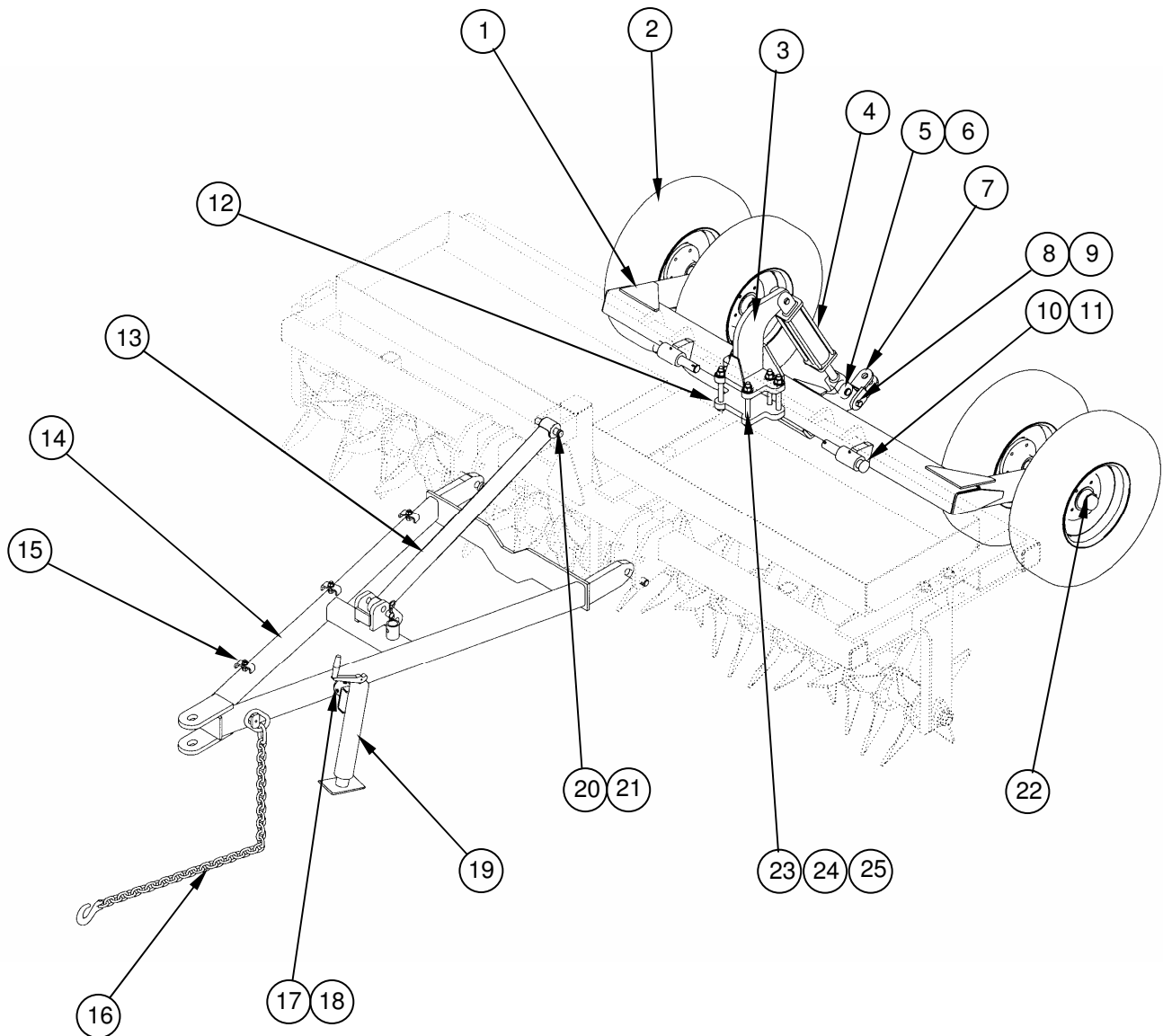


## Parts Summary – Wheel Parts on Transporter Kits

<b>Wheel Kit</b>	<b>Hub</b>	<b>Capacity</b>	<b>Bolts</b>	<b>Dust Cap</b>	<b>Outer Cone</b>	<b>Outer Cup</b>	<b>Inner Cup</b>	<b>Inner Cone</b>	<b>Grease Seal</b>
<b>AW-PT6300</b>	XB-53681	# 4,000	6 BOLTS	XB-65531	XB-65532	XB-65533	XB-65534	XB-65535	XB-65536
<b>AW-PT6500</b>	XB-53681	# 4,000	6 BOLTS	XB-65531	XB-65532	XB-65533	XB-65534	XB-65535	XB-65536
<b>AW-PT6600</b>	XB-66223	#3,000	5 BOLTS	XB-66249	XB-65544	XB-65533	XB-65939	XB-66250	XB-66251
<b>AW-PT6700</b>	XB-53744	#5,000	6 BOLTS	XB-65937	XB-65938	XB-65939	XB-65940	XB-65941	XB-65942
<b>AW-PT6700-04</b>	XB-66621	#6,500	8 BOLTS	XB-65523	XB-65524	XB-65525	XB-65526	XB-65527	XB-65528
<b>D-LINE RE-INF</b>									
<b>AW-PT9300</b>	XB-53744	#5,000	6 BOLTS	XB-65937	XB-65938	XB-65939	XB-65940	XB-65941	XB-65942
<b>AW-PT9700</b>	XB-56595	#6,000	6 BOLTS	XB-65523	XB-65524	XB-65525	XB-65526	XB-65527	XB-65528
<b>AW-PC6500</b>	XB-56595	#6,000	6 BOLTS	XB-65523	XB-65524	XB-65525	XB-65526	XB-65527	XB-65528
<b>AW-PC9722</b>	XB-65283	#8,000	8 BOLTS	XB-65552	XB-65553	XB-65554	XB-65555	XB-65556	XB-65557
									WHEEL STUD



**AW-PT6600**



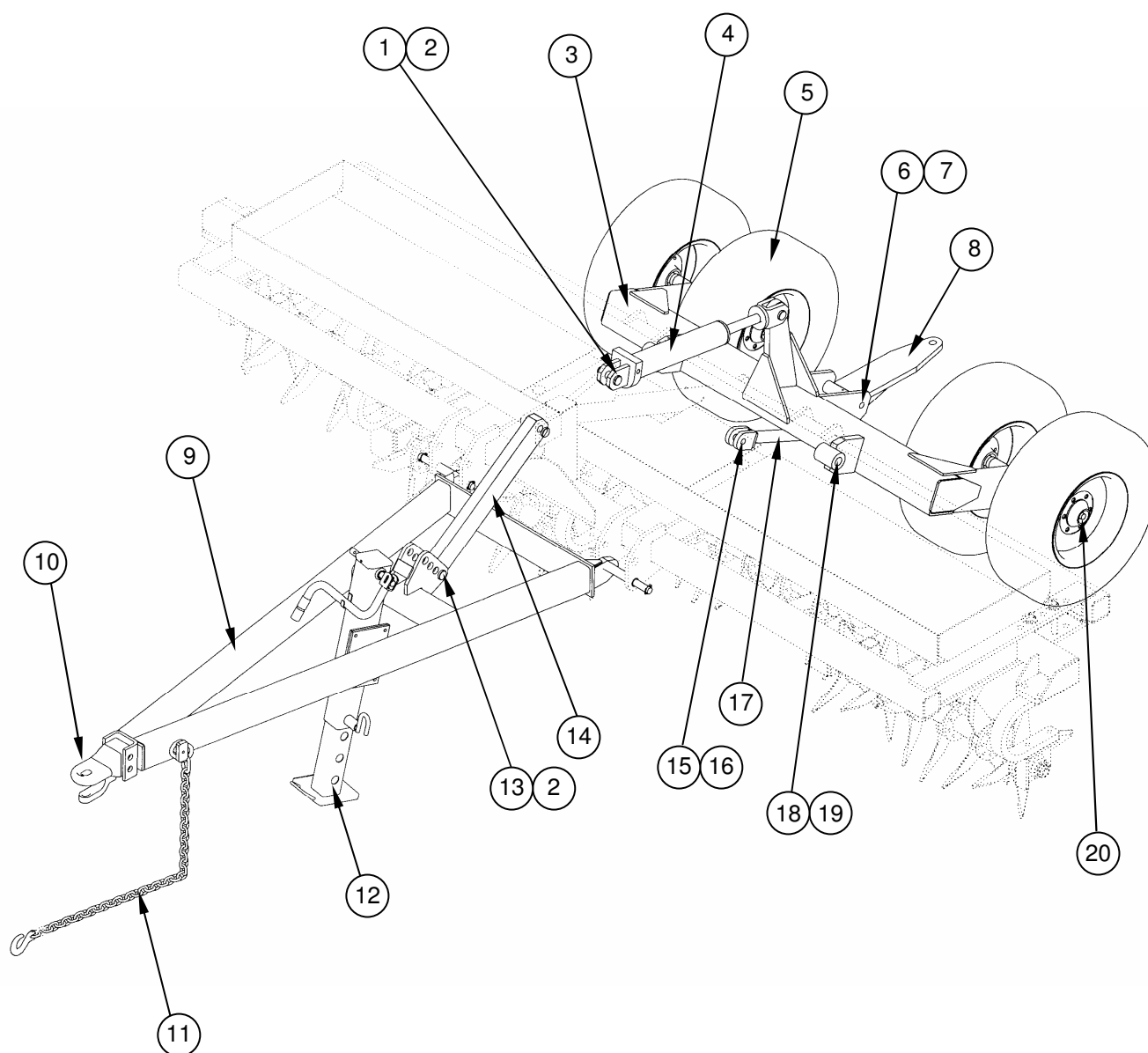


## AW-PT6600

Ref. No.	Part Number	Description	No Req.
1	XA-66225	LIFT FRAME ASSEMBLY	1
2	XB-66222	TIRE AND RIM ASSEMBLY, 6.70" X 15	4
3	XA-65261	CYLINDER BRACKET WELDMENT	1
4	XB-65272	HYDRAULIC CYLINDER	1
5	XA-67508-00388	CYLINDER PIN	2
6	XB-56057	CLIP	4
7	XA-66944	HARROW HITCH	1
8	XB-63348	CLEVIS PIN, 1" X 3" LG	1
9	XB-65838	COTTER PIN, 3/16" X 1-1/2" LG	1
10	XA-64218	PIN ASSEMBLY, 1.44" X 9" LG	2
11	XB-21-S-375-2000	ROLL PIN, 3/8" X 2" LG	2
12	XA-66524	PLATE	1
13	XA-66229	TOP LINK WELDMENT	1
14	XA-66212	DRAWBAR WELDMENT	1
15	XA-63317	3/8" HOSE CLAMP	3
16	XB-65917	SAFETY CHAIN	1
17	XB-65917	JACK LEG PIN	1
18	XB-53989	CLIP PIN	1
19	XB-64942	SWIVEL JACK, 5000# CAP.	1
20	XB-63440	CLEVIS PIN, 1" X 5" LG	2
21	XB-53946	CLIP PIN, 3/16"	2
22	XB-66223	HUB ASSEMBLY, 3000# - 5 BOLT	4
23	XF-01-075C8-750P	3/4" - 10 X 7-1/2 LG. GRD 8 BOLT	6
24	XB-63061	WASHER	12
25	XF-31-075C8-P	3/4" - 10 LOCKNUT GRD 8	6
<b>ADDITIONAL PARTS NOT SHOWN</b>			
	XA-67178-21600	HYDRAULIC HOSE ASSEMBLY	2
	TR-TC812S	SPLIT POLY LOOM 3/4"	1.5'
	XA-65275	CYLINDER LOCK OUT	1
	XB-53990	PIN	1
	XB-54995	CLIP PIN, 1/8"	1
	XA-63317	3/8" HOSE CLAMP	3



## AW-PT6700



### **Installation Precautions**

#### **Lift Cylinder**

When installing lift cylinder (item 4) ensure return tube of the cylinder that runs along the barrel is pointing in the **UP** position. If installed incorrectly the return tube of the cylinder may make contact with the AerWay and may cause damage to the cylinder.

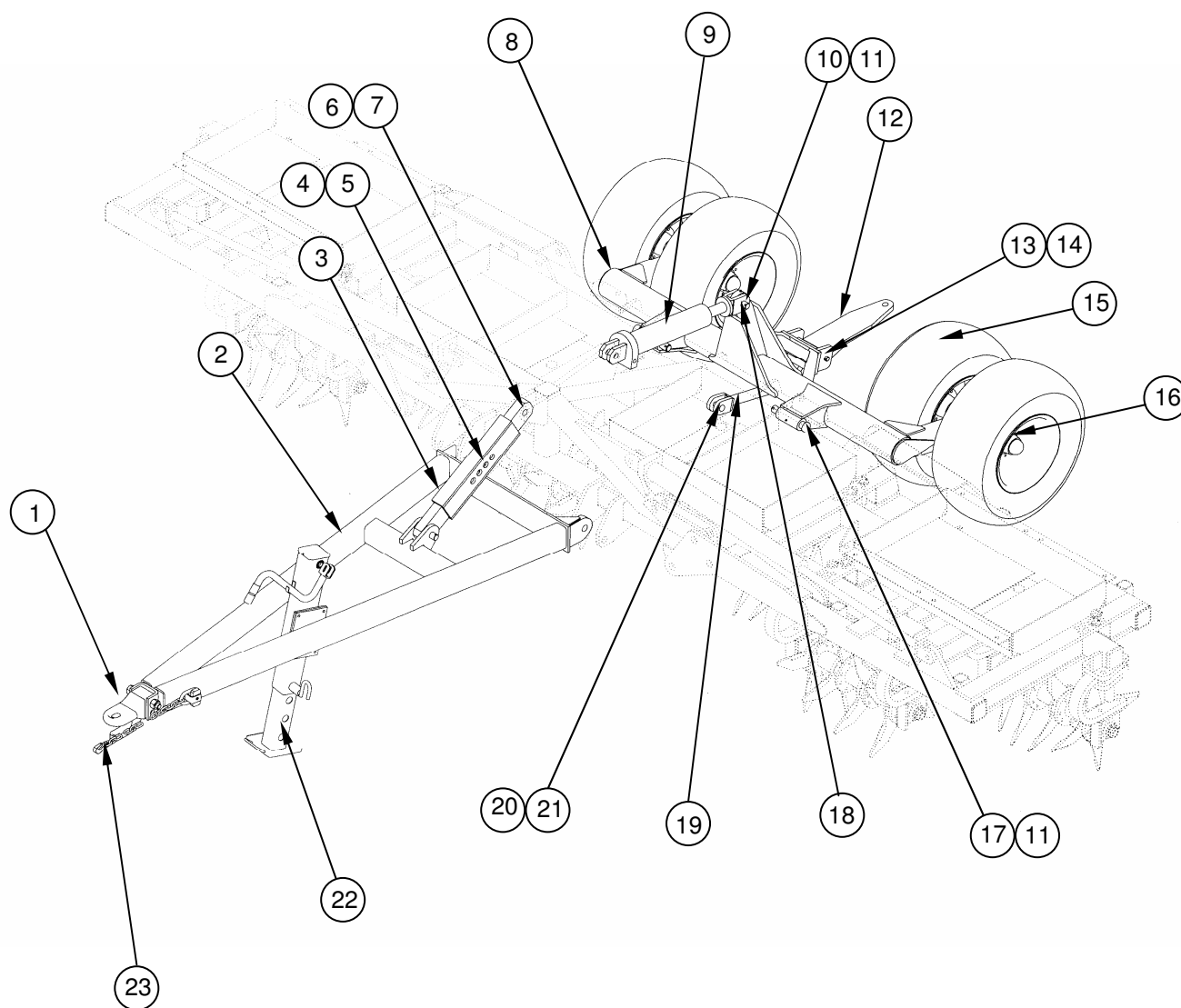


**AW-PT6700**

<b>Ref. No.</b>	<b>Part Number</b>	<b>Description</b>	<b>No Req.</b>
<b>1</b>	XB-63304	PIN, 1-1/4" X 4" LG	2
<b>2</b>	XB-56057	CLIP, 1/4"	4
<b>3</b>	XA-66187	LIFT FRAME ASSEMBLY	1
<b>4</b>	XB-66260	HYDRAULIC CYLINDER, 3.5" X 16"	1
<b>5</b>	XB-64974	TIRE & RIM ASSEMBLY, 9.5" X 15	4
<b>6</b>	XA-67508-00975	PIN 1" DIA X 9 - 3/4" LG.	1
<b>7</b>	XB-21-S-250-1750	ROLL PIN 1/4" X 1 - 3/4" LG.	2
<b>8</b>	XA-65333	REAR HITCH WELDMENT	1
<b>9</b>	XA-66204	DRAWBAR WELDMENT	1
<b>10</b>	XB-64734	CAT III HITCH	1
<b>11</b>	XB-65918	SAFETY CHAIN	1
<b>12</b>	XA-63609	JACK LEG ASSEMBLY	1
<b>13</b>	XB-64052	PIN, 1-1/4" X 5" LG	2
<b>14</b>	XA-66202	TOP LINK	1
<b>15</b>	XB-63348	CLEVIS PIN, 1" X 3" LG	2
<b>16</b>	XB-65838	COTTER PIN, 3/16" X 1-1/2" LG	2
<b>17</b>	XA-65100	REAR HITCH ARM ASSEMBLY	1
<b>18</b>	XA-64218	PIN, 1-7/16" X 4" LG	2
<b>19</b>	XB-21-S-375-2000	ROLL PIN, 3/8" X 2" LG	2
<b>20</b>	XB-53744	HUB ASSEMBLY 5000# - 6 BOLT	4
<b>ADDITIONAL PARTS NOT SHOWN</b>			
	XA-67178-21600	HYDRAULIC HOSE ASSEMBLY	2
	TR-TC812S	SPLIT POLY LOOM 3/4"	1.5'
	XA-63317	3/8" HOSE CLAMP	3



## AW-PT9700



### **Installation Precautions**

#### **Lift Cylinder**

When installing lift cylinder (item 9) ensure return tube of the cylinder that runs along the barrel is pointing in the **UP** position. If installed incorrectly the return tube of the cylinder may make contact with the AerWay and may cause damage to the cylinder.

#### **Top Link**

When installing Top Link (item 3) ensure the open end of the top link is pointing down to allow water to drain.

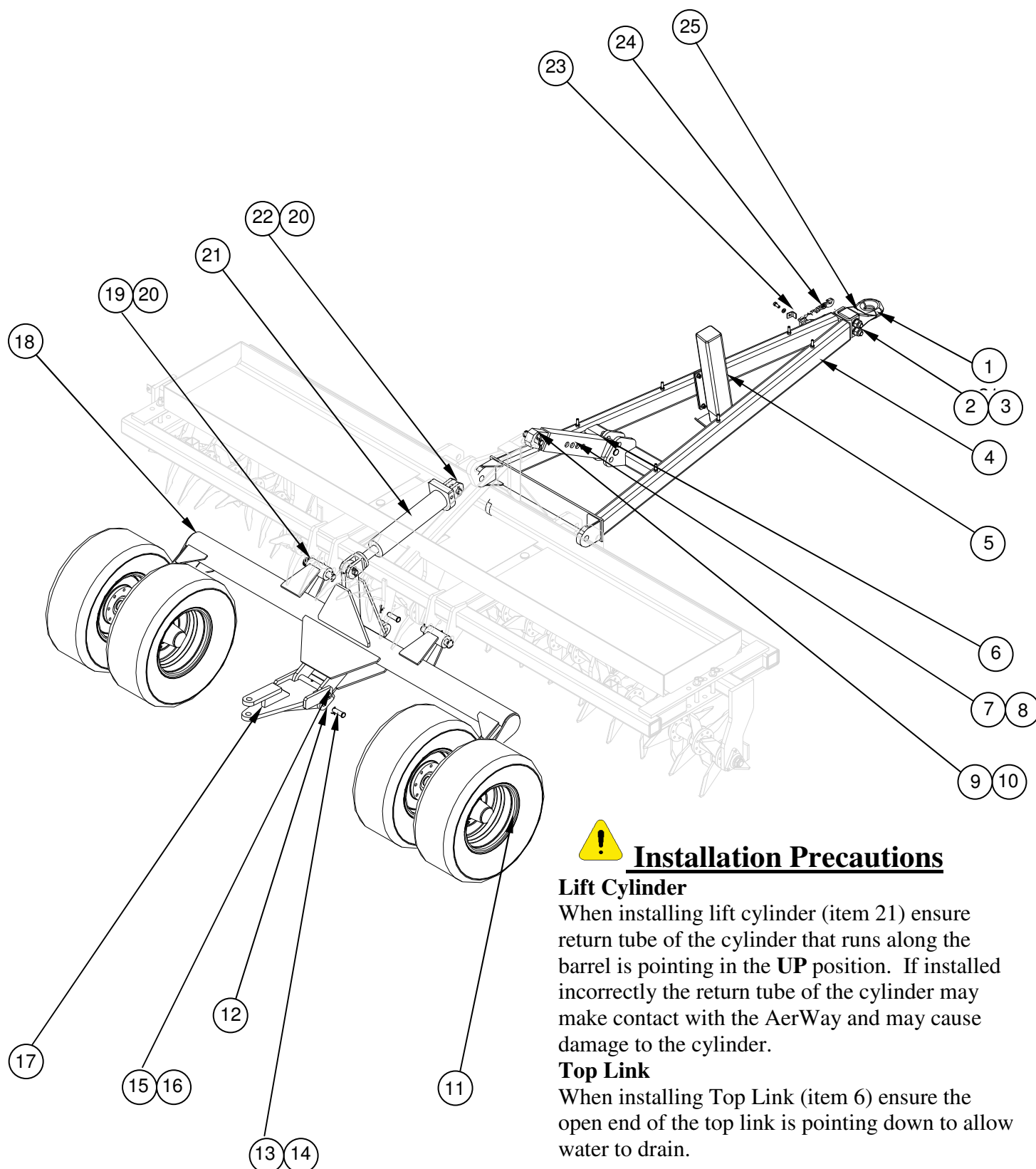


## AW-PT9700

Ref. No.	Part Number	Description	No Req.
1	XB-64734	CAT III HITCH, PERFECT HITCH	1
2	XA-67722	DRAWBAR WELDMENT	1
3	XA-65232	TOP LINK ASSY	1
4	XA-68111	PIN ASSY, 1.25"x6.0"LG	1
5	XB-53987-2	LYNCH PIN	1
6	XB-64052	PIN 1-1/4" X 5" LG.	2
7	XB-56057	CLIP PIN 1/4" DIA.	2
8	XA-67379	LIFT FRAME ASSY - PAINTED	1
9	XB-63278	CYLINDER, 4"x16"STROKE	1
10	XA-67509-00438	PIN 1-1/4" X 4-3/8" LG.	2
11	XB-21-S-375-2500	ROLL PIN 3/8" X 2-1/2" LG.	4
12	XA-65333	HITCH WELDMENT	1
13	XA-67508-00975	PIN 1" X 9-3/4" LG.	1
14	XB-21-S-250-2750	ROLL PIN 1/4" X 2 - 3/4" LG.	2
15	XB-65107	TIRE & RIM ASSY, 12.5" X15	4
16	XB-56595	HUB ASSY, 6000# - 6 BOLT	4
17	XA-64218	PIN, 1-7/16", 9.00"LG	2
18	XB-68298	BEARING, RBC, 1.25"IDx1.25"LG	1
19	XA-65100	REAR HITCH ARM ASSY	1
20	XB-63348	PIN CLEVIS 1" X 3" LG.	2
21	XB-65838	COTTER PIN	2
22	XA-63609	JACK LEG ASSY	1
23	XB-65918	SAFETY CHAIN ASSY, 20,000 LB.	1
<b>ADDITIONAL PARTS NOT SHOWN</b>			
	XA-67178-21600	HYDRAULIC HOSE ASSEMBLY	2
	TR-TC812S	SPLIT POLY LOOM 3/4"	1.5'
	XA-63317	3/8" HOSE CLAMP	6



## AW-PT9701 – HEAVY DUTY



### **Installation Precautions**

#### **Lift Cylinder**

When installing lift cylinder (item 21) ensure return tube of the cylinder that runs along the barrel is pointing in the **UP** position. If installed incorrectly the return tube of the cylinder may make contact with the AerWay and may cause damage to the cylinder.

#### **Top Link**

When installing Top Link (item 6) ensure the open end of the top link is pointing down to allow water to drain.

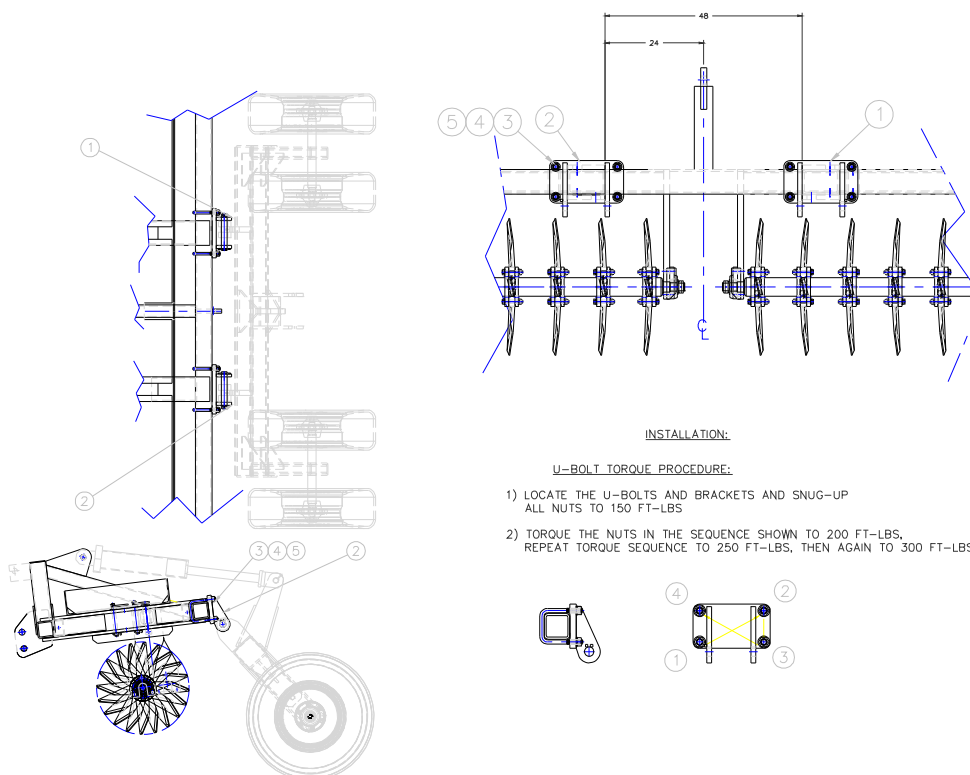


### AW-PT9701 HEAVY DUTY

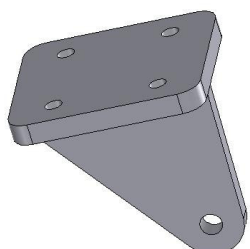
Ref. No.	Part Number	Description	No Req.
1	XB-63454	CAT#4 HITCH	1
2	XF-01-100C8-700P	HHCS,1"-8,7"LG,GR.8,PLATED	2
3	XF-31-100C8-P	LOCKNUT,1"-8,GR.8,PLATED	2
4	XA-67722	DRAWBAR WELDMENT	1
5	XA-63609	JACK LEG ASSY	1
6	XA-65232	TOP LINK ASSY	1
7	XA-68111	PIN ASSY,1.25"x6.0"LG	1
8	XB-53987-2	LYNCH PIN	1
9	XB-64052	PIN,1-1/4",5"LG	1
10	XB-56057	HITCH PIN CLIP	1
11	XA-66620	TIRE & RIM ASSY,12.5LX16	4
12	XA-65100	REAR HITCH ARM ASSY	1
13	XB-63348	CLEVIS PIN,1",3"LG	2
14	XB-65838	COTTER PIN, 3/16"DIAx 1-1/2"LG	2
15	XA-67508-01175	PIN,1.00",11.75"LG	1
16	XB-21-S-250-1750	ROLL PIN,1/4" X 1-3/4"	2
17	XA-66584	HITCH WELDMENT	1
18	XA-66802	LIFT FRAME	1
19	XA-64218	PIN,1-7/16",9.00"LG	2
20	XB-21-S-375-2000	ROLL PIN,3/8" X 2" LG.	6
21	XB-63278	CYLINDER,4"x16"STROKE	1
22	XA-67509-00438	PIN,1.25",4.38"LG	2
23	XA-65930	ANCHOR LOCK,20K & 30K #	1
24	XB-65919	SAFETY CHAIN ASSY,30,000 LB. CAP.	1
25	XF-41-100-8P	FLATWASHER,1",GR.8,PLATED	4
<b>ADDITIONAL PARTS NOT SHOWN</b>			
	XA-67178-21600	HYDRAULIC HOSE ASSEMBLY	2
	TR-TC812S	SPLIT POLY LOOM 3/4"	1.5'
	XA-63317	3/8" HOSE CLAMP	6
	XB-66621	HUB,6500#, 8 BOLT	4



## PRE 1999 AERWAY MODEL ACCESSORY KITS – PT6700 LIFT FRAME BRACKET KIT AK-66285



ITEM	PART NUMBER	DESCRIPTION	QTY
1	XA-66286	LIFT PIVOT WELDMENT, RH	1
2	XA-66287	LIFT PIVOT WELDMENT, LH	1
3	XB-63905	U-BOLT, 3/4" DIA X 4" ISW X 6" ISL	4
4	XB-63061	HARDENED WASHER, 3/4"	8
5	XF-31-075C8-P	LOCKNUT, 3/4-10 UNC GR.8, PLATED	8



### REAR HITCH LUG - AK-66282 REAR HITCH ATTACHMENT KIT

For older model AerWays which do not have a rear hitch lug welded on to the rear 4x4. A rear hitch lug provides an attachment point for the level ride hitch accessory. This allows the level ride hitch to remain horizontal in any lift frame position. This kit provides u-bolted brackets and the necessary hardware to attach a level ride hitch to any 15 or 20' AerWay.

### MAST PIN - AK-66265 PIN AND BUSHING KIT

A 1" pin with a bushing allows older units with a 1" mast hole to be used with the AW-PT6700 top link which has a CAT III 1-1/4" hole.









AerWay/Holland reserves the right to alter specification without notice or obligation



AerWay is manufactured by the Holland Group of Companies

**1-800-457-8310**

[www.aerway.com](http://www.aerway.com)

[aerway@aerway.com](mailto:aerway@aerway.com)



**Holland Equipment Limited**

20 Phoebe Street, Norwich, Ontario N0J 1P0  
Tel: (519) 863-3414 Fax: (519) 863-2398

**Holland Hitch Western Limited**

17909 Roan Place, Surry, B.C. V3S 5K1  
Tel: (604) 574-7491 Fax: (604) 574-0244

**Holland Hitch of Texas**

1301 Martinez Lane, Wylie, Texas, 75098  
Tel: (972) 442-3556 Fax: (972) 442-2092