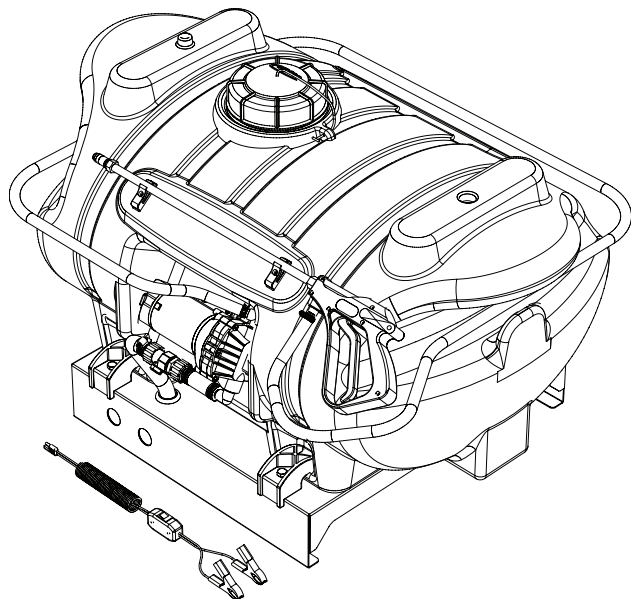


5301335
MODEL: LG-40-SS
40 Gallon, Skid-Mounted Sprayer
ASSEMBLY / OPERATION INSTRUCTIONS / PARTS



**BEFORE RETURNING THIS PRODUCT
FOR ANY REASON, PLEASE CALL
1-800-831-0027**

**IF YOU SHOULD HAVE A QUESTION OR
EXPERIENCE A PROBLEM WITH YOUR
FIMCO INDUSTRIES PRODUCT:
1-800-831-0027**

**BEFORE YOU CALL, PLEASE HAVE THE
FOLLOWING INFORMATION AVAILABLE:
SALES RECEIPT & MODEL NUMBER. IN MOST
CASES, A FIMCO INDUSTRIES EMPLOYEE CAN
RESOLVE THE PROBLEM OVER THE PHONE.**

GENERAL INFORMATION

The purpose of this manual is to assist you in operating your sprayer. Please read it carefully as it furnishes information which will help you operate and maintain your sprayer.

STOP **WARNING** **STOP**

**DO NOT USE PUMP IN AN EXPLOSIVE
ENVIRONMENT. DO NOT USE TO PUMP
FLAMMABLE FLUIDS, GASOLINE,
KEROSENE FUEL, OIL, ETC.**

WARRANTY / PARTS / SERVICE

Products are warranted for one year from date of purchase against manufacturer or workmanship defects.

Your authorized dealer is the best source of replacement parts and service. To obtain prompt, efficient service, always remember to give the following information.

1. Correct part description and part number.
2. Model number of your sprayer.
3. Serial number of your sprayer.

Part number and descriptions can be obtained from the illustrated parts list section of this manual. Whenever you need parts or repair service, contact your distributor / dealer first. For warranty work always take your original sales slip, or other evidence of purchase date, to your distributor / dealer.

TECHNICAL SPECIFICATIONS

- 40 Gallon Polyethylene Tank
- 12 Volt Diaphragm Pump - 3.8 G.P.M.
- Adjustable Pressure Range 0 - 45 P.S.I.
- 25 Foot Handgun Hose
- Pistol Grip Handgun
- Suction Line Filter

ASSEMBLY

The sprayer is fully assembled at the factory. Hook up the wiring to an existing 12 volt power source. The red wire of the two wire set must be connected to the positive post on the battery or the "Hot" connection on a switch or to the ammeter. The brown wire may be grounded or connected to the negative battery post.

OPERATION

The pump on the sprayer is factory set to shut off automatically at a maximum of 45 PSI. The handgun may be shut off at any time when the pump is running. The pump will shut off when there is no discharge from the handgun.

The pumping system draws solution from the tank and to the pump. The pump forces the solution under pressure to the handgun.



WWW.FIMCOINDUSTRIES.COM

1000 FIMCO LANE • P.O. BOX 1700 • NO. SIOUX CITY, SD 57049
TOLL FREE: 800-831-0027 • TOLL FREE FAX: 800-494-0440
Form No. 850 (5004623 6/07) Printed in U.S.A.

It is important to test the sprayer with plain water before attempting actual spraying. This will enable you to check the sprayer for leaks in the plumbing system.

1. Open tank lid and be sure the tank is clean and free of foreign material. Fill the tank about half full with plain water.

WARNING: Some chemicals will damage the pump valves if allowed to soak untreated for a length of time. Always flush the pump after use. Do not allow chemicals to sit in pump for extended times of idleness. Follow chemical manufacturers instructions on disposal of all waste water from the sprayer.

CAUTION

PRESSURE SWITCH OPERATION

Pressure switch is pre-set at the factory. Improper adjustment of the pressure switch, may cause severe overload or premature failure. If the pump is subjected to rapid cycling during normal operation, or infrequent periods, damage may occur.

AFTER SPRAYING

After use, fill the sprayer part way with water, start the sprayer and allow clear water to be pumped through the plumbing system and out through the handgun. Use the handgun to thoroughly wash all internal parts of tank and tank cover.

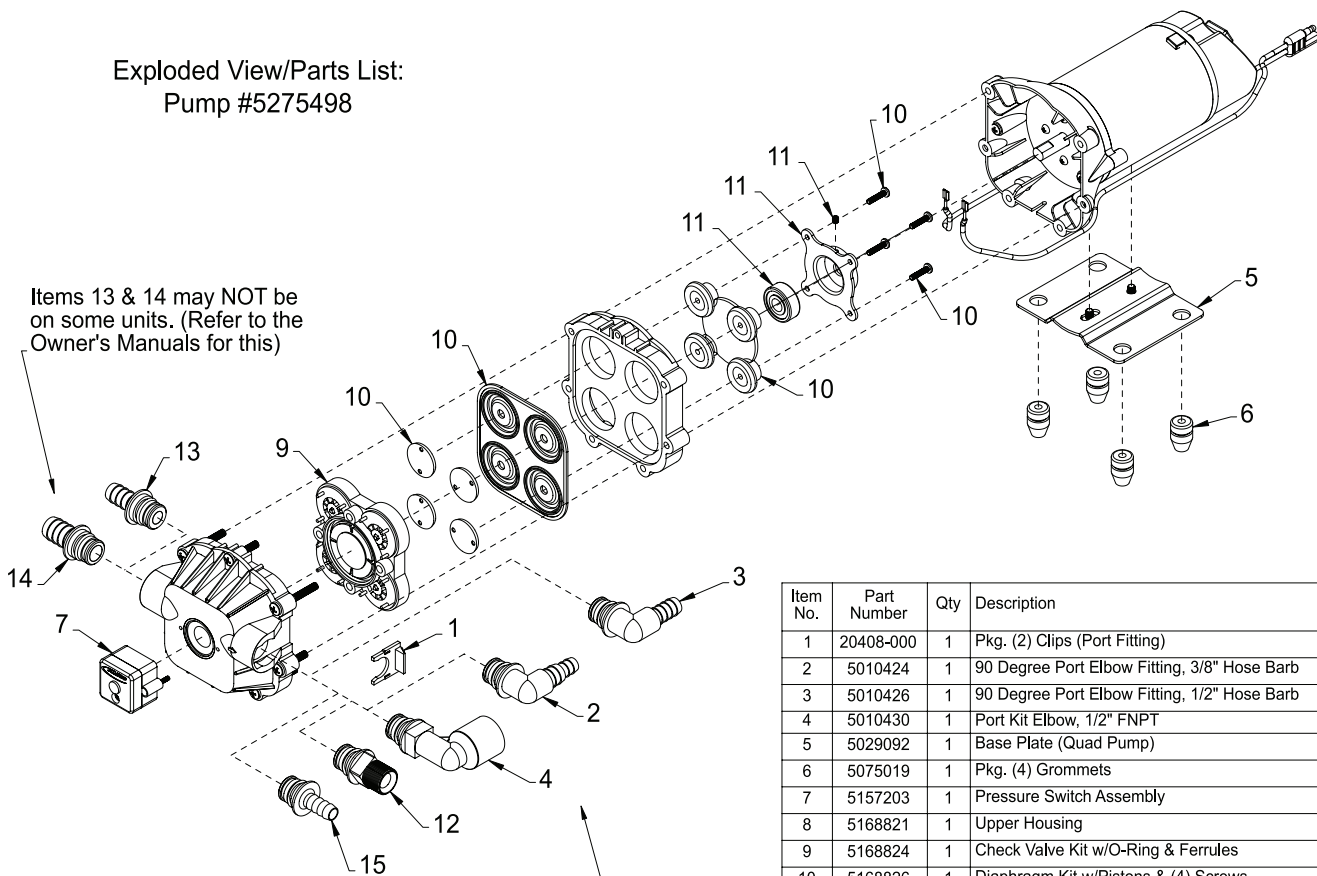
Refill the tank about half full with plain water and use a chemical neutralizer such as NUTRA-SOL or equivalent and repeat cleaning instructions above. Flush the entire sprayer with the neutralizing agent. Follow the chemical manufacturers disposal instructions of all wash and rinsing water.

WINTER STORAGE

Drain all water out of the sprayer paying special attention to pump, valves, and spray gun. These items are especially prone to damage from chemicals and freezing weather.

The sprayer should be winterized before storage by pumping a solution of RV anti-freeze through the entire plumbing. Proper care and maintenance will prolong the life of the sprayer.

Exploded View/Parts List:
Pump #5275498

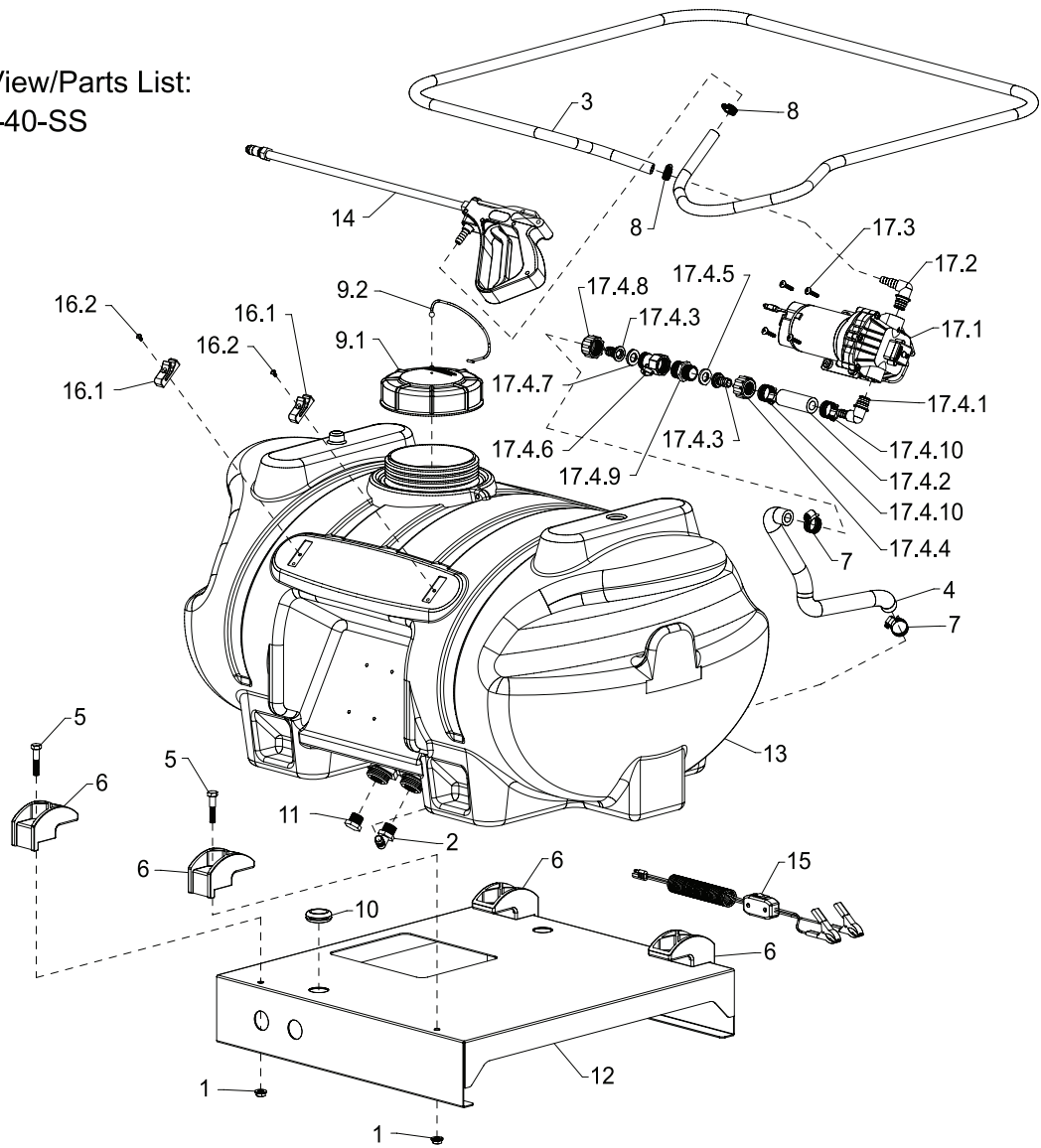


Items 13 & 14 may NOT be on some units. (Refer to the Owner's Manuals for this)

NOTE:
One of these (5) fittings (Items 2, 3, 4, 12, & 15) is used on this pump, depending on unit. (Refer to individual Owner's Manuals)

Item No.	Part Number	Qty	Description	List Price
1	20408-000	1	Pkg. (2) Clips (Port Fitting)	5.74
2	5010424	1	90 Degree Port Elbow Fitting, 3/8" Hose Barb	1.50
3	5010426	1	90 Degree Port Elbow Fitting, 1/2" Hose Barb	1.49
4	5010430	1	Port Kit Elbow, 1/2" FNPT	
5	5029092	1	Base Plate (Quad Pump)	
6	5075019	1	Pkg. (4) Grommets	
7	5157203	1	Pressure Switch Assembly	24.95
8	5168821	1	Upper Housing	
9	5168824	1	Check Valve Kit w/O-Ring & Ferrules	24.99
10	5168826	1	Diaphragm Kit w/Pistons & (4) Screws	19.96
11	5168828	1	Cam/Bearing Kit, w/Set Screw	7.92
12	5168832	1	Port Kit Fitting, 1/2" MNPT	2.24
13	5168833	1	Port Kit Fitting, 1/2" Hose Barb	2.24
14	5168835	1	Port Kit Fitting, 5/8" Hose Barb	
15	5168836	1	Port Kit Fitting, 3/8" Hose Barb	

Exploded View/Parts List:
LG-40-SS



Item No.	Part Number	Qty	Description	List Price
1	5006259	4	3/8"-16 Hex Whiz (Flange) Locknut	.18
2	5010039	1	Nylon Elbow, 1/2" MNPT x 1/2" HB	.82
3	5020135	1	Hose, 3/8"-1 Brd. x 25 Ft.	14.50
4	5020416	1	Hose, 1/2"-1 Brd. x 19 3/8"	1.55
5	5034101	4	H.H.C.S., 3/8"-16 x 1 3/4"	.50
6	5038698	4	Plastic Tank Hold-Down Leg Clip	2.93
7	5051022	2	Hose Clamp, 1/2"	.62
8	5051114	2	Hose Clamp, 3/8"	.63
9	5058183	1	FIMCO 5" Threaded Tank Lid w/Lanyard	10.50
9.1	5058183	1	FIMCO 5" Threaded Tank Lid	10.50
9.2	5058170	1	Tank Lid Lanyard, 8" (Black)	.89
10	5075015	1	Rubber Grommet	1.00
11	5102024	1	Nylon Pipe Plug, 1/2" MNPT	.46
12	5156025	1	40 Gallon Spot Sprayer Skid	49.70
13	5169245	1	40 Gallon Elliptical Tank (White)	
14	5273959	1	Handgun w/X-26 Tip	36.00
15	5275459	1	Lead Wire Assembly (w/Switch), 96"	13.50
16	5274880	1	Pkg. (2) Handgun Clips & (2) Screws	2.85
16.1	5053096	2	Handgun Clip, for Blow-Molded Tanks	.95
16.2	5117293	2	#10-24 x 3/8" Phillips Round Head Machine Screw	.25
17	5275185	1	Pump Assembly	180.00
17.1	5275498	1	New Generation 3.8 g.p.m. Pump	
17.2	5010424	1	90 Degree Port Elbow Fitting, 3/8" Hose Barb	1.50
17.3	5117168	4	#10-24 x 1" Phillips Truss Head Machine Screw	.25
17.4	5275547	1	Fitting/Hose Sub-Assembly (LG-40-SS)	
17.4.1	5010426	1	90 Degree Port Elbow Fitting, 1/2" Hose Barb	1.49
17.4.2	5020060	1	Hose, 1/2"-1 Brd. x 2 3/4"	.64
17.4.3	5149011	2	Nylon Swivel, 1/2" Flat Seat Hose Barb	.37
17.4.4	5006056	1	Nylon Swivel Nut, 3/4" FNPT	1.04
17.4.5	5116242	1	Strainer, 1" Filter Washer	.31
17.4.6	5143188	1	#35 Nylon Shut-Off Valve	2.53
17.4.7	5016066	1	#102 Hose Washer (Gasket) 1" O.D. Rubber	.20
17.4.8	5006055	1	Nylon Swivel Nut, 3/4" FGHT	.38
17.4.9	5005022	1	Nylon Male Street Adapter, 3/4" MGHT x 3/4" MNPT	.54
17.4.10	5051022	2	Hose Clamp, 1/2"	.62