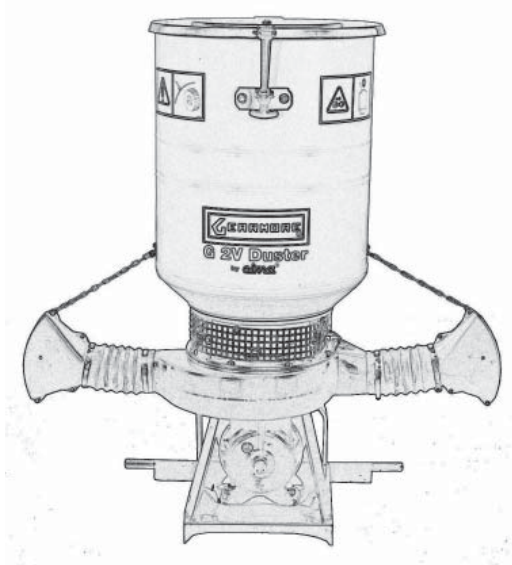


GEARMORE®

DUSTER



Operation, Service & Parts Manual For Model G2V

April 2014

TABLE OF CONTENTS

<u>SECTION</u>	<u>DESCRIPTION</u>	<u>PAGE</u>
1	Introduction	1 - 2
1.1	Purchaser's Responsibility	1
1.2	Serial Number Information	1
1.3	Using the Manual.....	2
1.4	Updates	2
2	Safety	3 - 10
2.1	Safety Tips	4
2.2	General Safety	5
2.3	Equipment Safety Guidelines	6
2.4	Safety Preparation.....	7
2.5	Operational Safety	8
2.6	Safety Decals	9-10
2.6.1	Positioning of Decals	9
2.6.2	Decal Part Numbers & Meanings.....	10
3	Machine's Structural Analysis	11 - 14
3.1	Frame.....	12
3.2	Gearbox.....	12
3.3	Fan	13
3.4	Tank Support Cone.....	13
3.5	Tank	13
3.6	Capacity Regulator.....	13-14
3.7	General Information.....	14
4	Constant Delivery Control	15
5	Lifting & Transport	16
6	Maintenance	17
6.1	Lubrication.....	17
6.2	Cleaning & Storage.....	17
7	Operation	18
7.1	Before Operating Duster.....	18
7.2	Operation.....	18
8	Parts	19 - 25
8.1	Hopper Assembly.....	19-20
8.2	Gearbox Assembly	21
8.3	Frame & Fan Assembly	22-23
8.4	Lid Assembly.....	24
8.5	Driveline Assembly	25
9	Limited Warranty	26

1 INTRODUCTION

We welcome you as an owner of a Gearmore duster. Please read the following instructions and refer to them when required. This manual contains parts diagrams and replacement parts lists. Do not modify the equipment in any way. Unauthorized modification may impair the function and/or safety and could affect the life of the equipment.

Where replacement parts are necessary for periodic maintenance and servicing, genuine factory replacement parts ***MUST*** be used to restore your equipment to original specifications. The manufacturer will not be responsible for injuries or damages caused by use of unapproved parts and/or accessories.

The manufacturer reserves the right to make improvements to the machinery and parts at any time and at their discretion.

OPERATOR ORIENTATION - The directions left, right, front and rear, are as seen from the driver's seat and facing in the direction of travel.

1.1 PURCHASER'S RESPONSIBILITY

It is the responsibility of the owner to make sure the machine is maintained properly, and that all parts are in working order. It is the responsibility of the purchaser and/or operator to.....

- Inspect the equipment and replace or repair any parts that are damaged or worn which under continued operation would cause damage, wear to other parts, or cause a safety hazard.
- Return the equipment or parts to the authorized dealer, from where it was purchased, for service or replacement of defective parts that are covered by warranty. (The factory may inspect equipment or parts before warranty claims are honored.)
- Payment of all costs incurred by the dealer for traveling to or transporting the equipment for warranty inspection and/or claims.

1.2 MODEL / SERIAL NUMBER

NAME: _____

PURCHASED FROM: _____

DATE OF PURCHASE: _____

MODEL NUMBER: _____

SERIAL NUMBER: _____

1.3 USING THE MANUAL

Read every part of this manual, paying attention to the **WARNING** and **DANGER** indications both in the text and on the machine or on components.

All operations suggested by the manual will have to be followed with the utmost care and only after having understood the negative consequences of improper usage.

The following "**symbols**" are used with the text in order to highlight and visually identify the importance of the various types of information:



Indicates important additional information



Non observance can result in permanent damage to the duster



Highlights possibly dangerous situations to people

The manual, with relevant attachments and possible integrating issues, must be kept with the utmost care and must always be complete, integer and legible in every part. Should it be mislaid it is imperative to immediately request a duplicate from CIMA S.p.A. should the decals originally applied to the machine be mislaid, damaged or become incomprehensible, they should be promptly replaced.



- The manual must always be kept for the duster's whole operational life
- Any modification received must be permanently inserted in this publication
- The manual must accompany the duster should the unit be sold

1.4 UPDATES

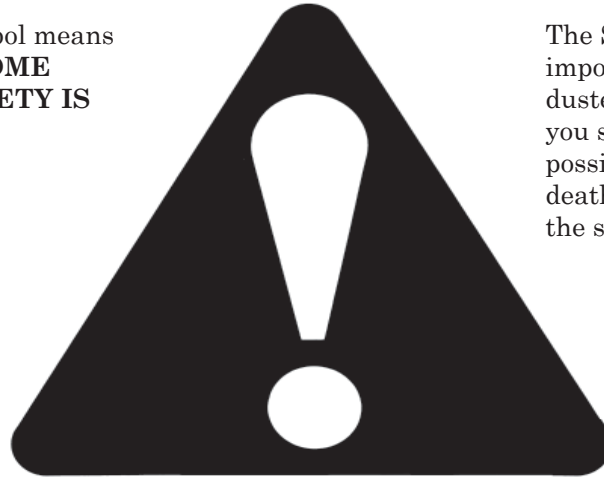
Possible updates that CIMA S.p.A. will provide the owner of the duster will be accompanied by instructions to insert into this publication.

Should the machine be sold, the owner must inform the new purchaser that he should notify CIMA S.p.A. of his address in order to receive possible future integrating issues and/or updates.

2 SAFETY

SAFETY ALERT SYMBOL

This Safety Alert symbol means **ATTENTION! BECOME ALERT! YOUR SAFETY IS INVOLVED!**



The Safety Alert symbol identifies important safety messages on the duster and in the manual. When you see this symbol, be alert to the possibility of personal injury or death. Follow the instructions in the safety message.

Why is SAFETY important to you?

3 Big Reasons

Accidents Disable and Kill
Accidents Cost
Accidents Can Be Avoided

SIGNAL WORDS:

Note the use of the signal words **DANGER**, **WARNING** and **CAUTION** with the safety messages. The appropriate signal word for each message has been selected using the following guide-lines:

SI NO LEE INGLES, PIDA AYUDA A AIGUIEN QUE SI LO LEA PARA QUE LE TRADUZCA LAS MIDIDAS DE SEGURIDAD.

DANGER - Indicates an imminently hazardous situation that, if not avoided, will result in death or serious injury. This signal word is to be limited to the most extreme situations typically for machine components which, for functional purposes, cannot be guarded.

WARNING - Indicates a potentially hazardous situation that, if not avoided, could result in death or serious injury, and includes hazards that are exposed when guards are removed. It may also be used to alert against unsafe practices.

CAUTION - Indicates a potentially hazardous situation that, if not avoided, may result in minor or moderate injury. It may also be used to alert against unsafe practices.

If you have any questions not answered in this manual or require additional copies or the manual is damaged, please contact your dealer.

2.1 SAFETY TIPS

1. **NEVER** run PTO at speeds exceeding 540 R.P.M.
2. Duster should be operated only by qualified personnel.
3. **ALWAYS** fill duster slowly to avoid spillage.
4. When starting duster, maintain a safe distance from moving parts.
5. **NEVER** leave duster unattended while it is running.
6. Keep hands, feet and clothing away from moving parts.
7. Handle powders carefully. Follow manufacturer's directions for application and rates.



WARNING!!

OPERATING THE TRACTOR PTO AT OVER 540 R.P.M. OR APPLYING RATES OF LESS THAN 8 POUNDS OF SULFUR PER ACRE COULD CAUSE THE SULFUR TO MELT.

SAFETY WARNING! All of the preparation, use, maintenance, handling and transport operations should be carried out only after having acquired the perfect understanding of all instructions contained in this publication and the ability of interpreting the symbols applied on the machine in the correct way.

2.2 GENERAL SAFETY

YOU are responsible for the **SAFE** operation and maintenance of your duster. **YOU** must ensure that you and anyone else who is going to operate, maintain or work around the duster be familiar with the operating and maintenance procedures and related **SAFETY** information contained in this manual. This manual will take you step-by-step through your working day and alerts you to all good safety practices that should be adhered to while operating the duster.

Remember, **YOU** are the key to safety. Good safety practices not only protect you, but also the people around you. Make these practices a working part of your safety program. Be certain that **EVERYONE** operating this equipment is familiar with the recommended operating and maintenance procedures and follows all the safety precautions. Most accidents can be prevented. Do not risk injury or death by ignoring good safety practices.

- Duster owners must give operating instructions to operators or employees before allowing them to operate the machine, and at least annually there after per OSHA (Occupational Safety and Health Administration) regulation 1928.57.
- The most important safety feature on this equipment is a **SAFE** operator. It is the operator's responsibility to read and understand **ALL** Safety and Operating instructions in the manual and to follow these. Most accidents can be avoided.
- A person who has not read and understood all operating and safety instructions is not qualified to operate the machine. An untrained operator exposes himself and bystanders to possible serious injury or death.
- **DO NOT** modify the equipment in any way. Unauthorized modification may impair the function and/or safety and could affect the life of the equipment.
- **Think SAFETY! Work SAFELY!**

1. Read and understand the Operator's Manual and all safety signs before operating, maintaining, or adjusting the duster.



2. Have a first-aid kit available for use should the need arise and know how to use it.

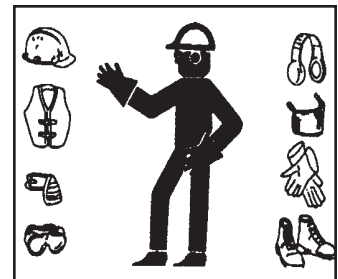


3. Have a fire extinguisher available for use should the need arise and know how to use it.



4. Wear appropriate protective gear. This list includes but is not limited to:

- A hard hat
- Protective shoes with slip resistant soles
- Protective goggles, glasses or face shield
- Heavy gloves
- Protective clothing



5. **DO NOT** allow riders.



6. Wear suitable ear protection for prolonged exposure to excessive noise.

7. Place all controls in neutral, stop tractor engine, set park brake, remove ignition key and wait for all moving parts to stop before servicing, adjusting, repairing, or unplugging.

8. Clear the area of people, especially small children, before starting.

9. Review safety related items annually with all personnel who will be operating or maintaining the duster.

2.3 EQUIPMENT SAFETY GUIDELINES

Safety of the operator and bystanders is one of the main concerns in designing and developing a duster. However, every year many accidents occur which could have been avoided by a few seconds of thought and a more careful approach to handling equipment. You, the operator, can avoid many accidents by observing the following precautions in this section. To avoid personal injury or death, study the following precautions and insist those working with you, or for you, follow them. If potentially dangerous situations are known, accidents can be prevented!

- It is forbidden to utilize the duster for purposes other than for its intended use, as it has been developed exclusively for distributing anti-mildew powders on agricultural cultivations.
- **NEVER** use alcoholic beverages or drugs which can hinder alertness or coordination while operating this equipment. Consult your doctor about operating this machine while taking prescription medications.
- **Under no circumstances should young children be allowed to work with this equipment. Do not allow persons to operate or assemble this unit until they have read this manual and have developed a thorough understanding of the safety precautions and of how it works. Review the safety instructions with all users annually.**
- This equipment is dangerous to children and persons unfamiliar with its operation. The operator should be a responsible, properly trained and physically able person familiar with farm machinery and trained in this equipment's operations. If the elderly are assisting with farm work, their physical limitations need to be recognized and accommodated.
- **NEVER** exceed the limits of a piece of machinery. If its ability to do a job, or to do so safely, is in question - **DON'T TRY IT.**
- Do not modify the equipment in any way. Unauthorized modification may impair the function and/or safety and could affect the life of the equipment.

Only operate this duster on a properly sized and equipped tractor.

When using the duster, it is particularly **forbidden**:

- The attachment to vehicles of unsuitable power or weight.
- To use other than 540 R.P.M. PTO speed.
- To use the machine without inserting the pins and cotter pins when supplied.
- To work on excessive slopes.
- To lift the machine when the power take off is engaged.
- To approach the machine when wearing inappropriate work clothing.
- To get on the machine while it is being used or transported.

Think SAFETY! Work SAFELY! If potentially dangerous situations are known, accidents can be prevented



DANGER - Operating this duster in an application for which it is not designed and/or operating with the wrong size tractor can cause duster component damage and equipment failure resulting in possible serious injury or death.

OPERATOR'S REQUIREMENTS:

All operators using the equipment must be competent and meet necessarily the following features:

Physical - good eyesight, coordination and capability of carrying out all functions required for the machine's use.

Mental - Capability of understanding and applying the established rules and safety precautions. Users must pay attention and be sensible for their own and other people's safety.

Training - Users must have read and studied this manual, its eventual enclosed graphs and schemes and its identification and danger plates. They must be skilled and trained on any use or maintenance activities.

2.4 SAFETY PREPARATION

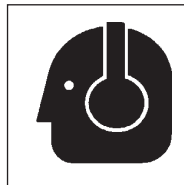
1. Never operate the tractor and duster until you have read and completely understand this manual, the Tractor Operator's Manual and each of the Safety Messages found on the safety signs on the tractor and duster.

2. Personal protection equipment, including hard hat, safety glasses, safety shoes and gloves are recommended during assembly, installation, operation, adjustment, maintaining, repairing, removal or moving the implement. **DO NOT** allow long hair, loose fitting clothing or jewelry to be around equipment.



3. **PROLONGED EXPOSURE TO LOUD NOISE MAY CAUSE PERMANENT HEARING LOSS!**

Tractors with or without equipment attached can often be noisy enough to cause permanent, partial hearing loss. We recommend that you wear hearing protection on a full-time basis if the noise in the Operator's position exceeds 80db. Noise over 85db on a long-term basis can cause severe hearing loss. Noise over 90db adjacent to the Operator over a long-term basis may cause permanent, total hearing loss.



NOTE: Hearing loss from loud noise (from tractors, chain saws, radios, and other such sources close to the ear) is cumulative over a lifetime without hope of natural recovery.

4. Always consider the features of the area where work is taking place. When the equipment is running, it is forbidden to stand within the field of action of the duster.
5. Before and while working, do not drink alcohol, take drugs, or any other substances which may alter your capability of working with machine tools.
6. Do not use the equipment under unsafe conditions. For instance, it is forbidden to execute makeshift repair activities just to start working. Operate only in daylight or good artificial light. You **MAY NOT** use in nightwork. Any use other than those described in the use permitted is considered as non conforming and therefore is not permitted.
7. Be sure to have sufficient fuel, to prevent a forced stopping of the machine, maybe during a critical movement.
8. Ensure that all safety shielding and safety signs are properly installed and in good condition.
9. Never operate implement without all shields in place and in good operational condition.
10. The operator must be familiar with the duster and tractor and all associated safety practices before operating the duster and tractor.

2.5 OPERATIONAL SAFETY

WHEN WORKING OR DURING THE MAINTENANCE ACTIVITIES IT IS NECESSARY TO REMEMBER:

The use of this equipment is subject to certain hazards that cannot be protected against by the mechanical means or product design. All operators of this equipment must read and understand this entire manual, paying particular attention to safety and operating instructions, prior to using. If there is something in this manual you do not understand, ask your supervisor, or your dealer, to explain it to you.

Most accidents occur because of neglect or carelessness. Keep all helpers and bystanders at least several hundred feet from an operating duster. Only properly trained people should operate this machine. ***Operation must be stopped when anyone comes within several hundred feet.***

The labels and stickers providing instructions and pointing out the dangers, must not be removed, hidden, or made illegible.

Do not remove, except in case of maintenance, the shields, guards, and deflectors equipped on the duster. When it is necessary to remove them, stop engine, handle with care and reassemble them properly before restarting the engine and using the equipment.

All shields, guards, and deflectors equipped on the duster must be maintained in good operational condition.

It is forbidden to lubricate, clean and adjust the moving parts while they are running.

During maintenance or adjustment activities on the equipment it is forbidden to use hands for executing operations for which there are specific tools.

Do not use tools in bad condition or inappropriately, for instance pliers rather than wrenches.

When maintenance or repairs are completed check out that no tools, wiping rags, or other materials are left inside spaces or guides with moving parts.

While using the equipment, it is forbidden to make more than one person give directions and make signals. The eventual directions and signals relating to the load handling must be given by one person only.

Do not unexpectedly call an operator while he is working if not necessary; it is forbidden as well to frighten or throw objects at the operator, even if just for fun.

Watch out for those who are present, especially the children! Do not let people get on the machine.

When not in use, stop the vehicle's engine, park it on flat ground with parking brake engaged and the PTO disengaged. Never leave equipment unattended with the tractor running.

Do not clean, lubricate, repair or adjust with the engine running and the machine lifted.

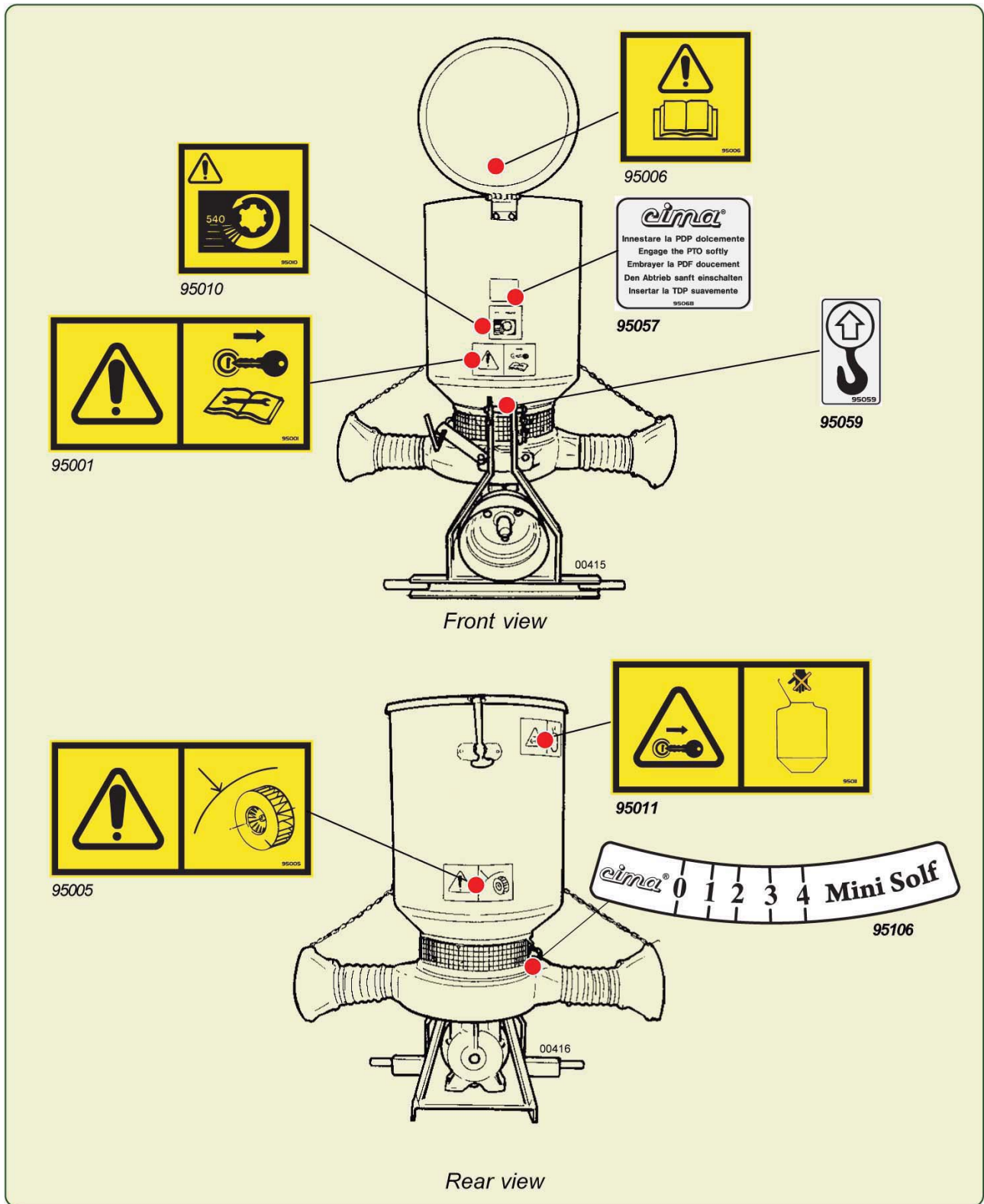
Do not allow riders on the duster or tractor at any time. There is no safe place for any riders. Do not operate unless all personnel, livestock, and pets are several hundred feet away.

Never use the machine on steep slopes which may jeopardize the equipment's stability.

The manufacturer declines all responsibility for a lack of compliance with these instructions.

2.6 SAFETY DECALS

2.6.1 POSITIONING OF THE SAFETY, USE AND MAINTENANCE DECALS



2.6 SAFETY DECALS (CONTINUED)

2.6.2 SAFETY DECAL PART NOS. AND MEANINGS



95001

- Stop the engine and remove the key from the tractor's control panel before carrying out all maintenance or repair operations.
- Consult the user and maintenance manual before using or intervening on the machine.



95011

- Stop the engine and remove the key from the tractor's control panel before carrying out all operations on the duster.
- It is forbidden to get into the tank!



95005

- **Danger** - parts in motion. Before removing protection guards, stop the tractor, remove the key from the tractor's control panel and ensure that all moving parts have stopped.



95010

- Maximum operating speed of the drive outlet (PTO) - 540 RPM.



95006

- Consult the user and maintenance manual before using the machine.

Use and maintenance decals



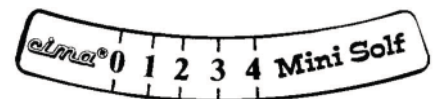
95057

- Softly engage the PTO
- Fan start-up must be gradual.



95059

- Hooking point for the lifting of the machine.

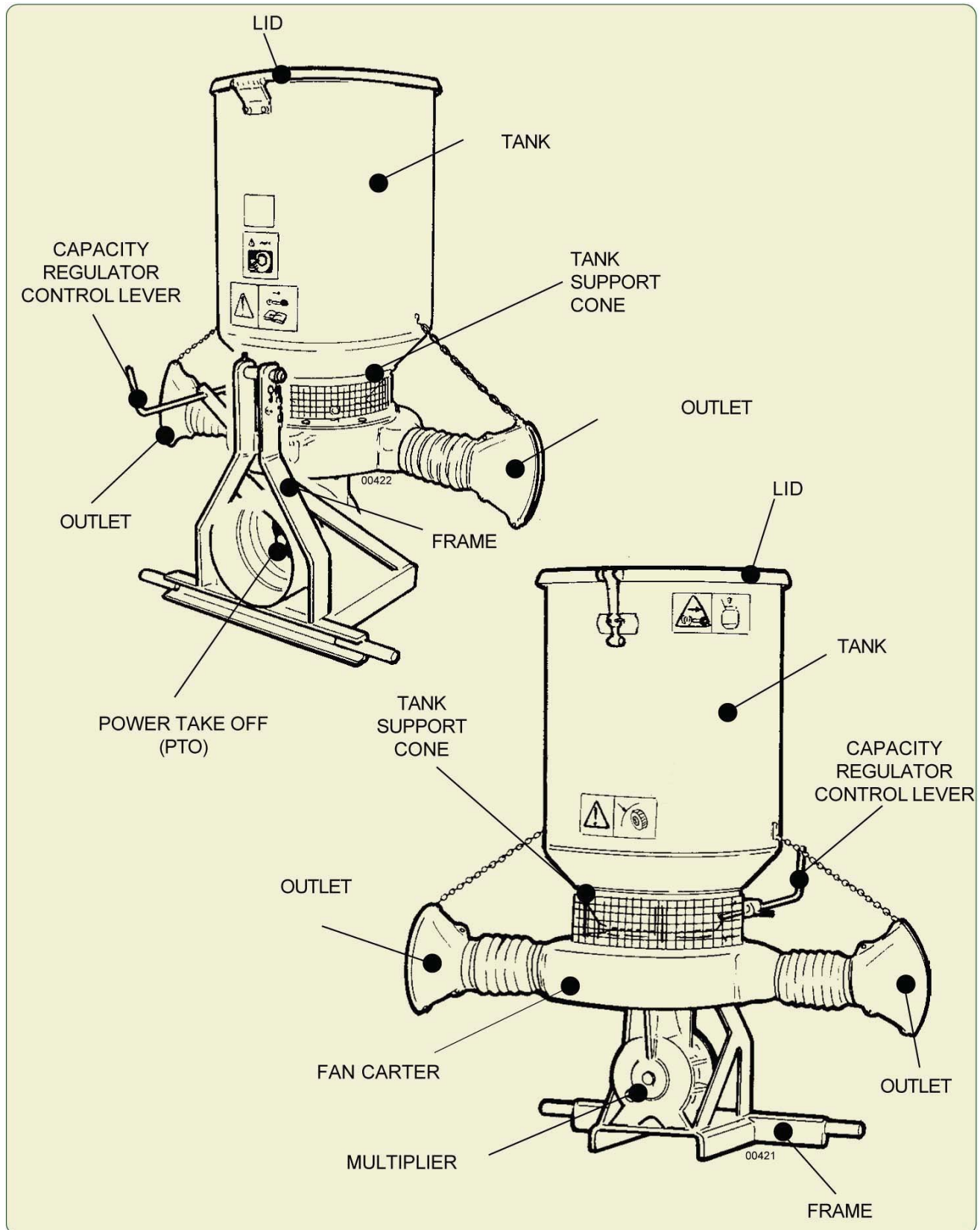


96106

- Delivery graduation

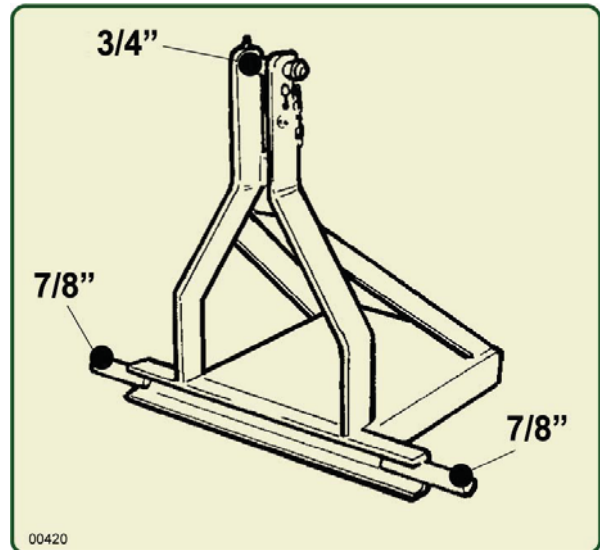
3 MACHINE'S STRUCTURAL ANALYSIS

The pictures indicate the position of the main components of the duster.



3.1 FRAME

The frame may be coupled to hydraulic hoists of Cat. 1.

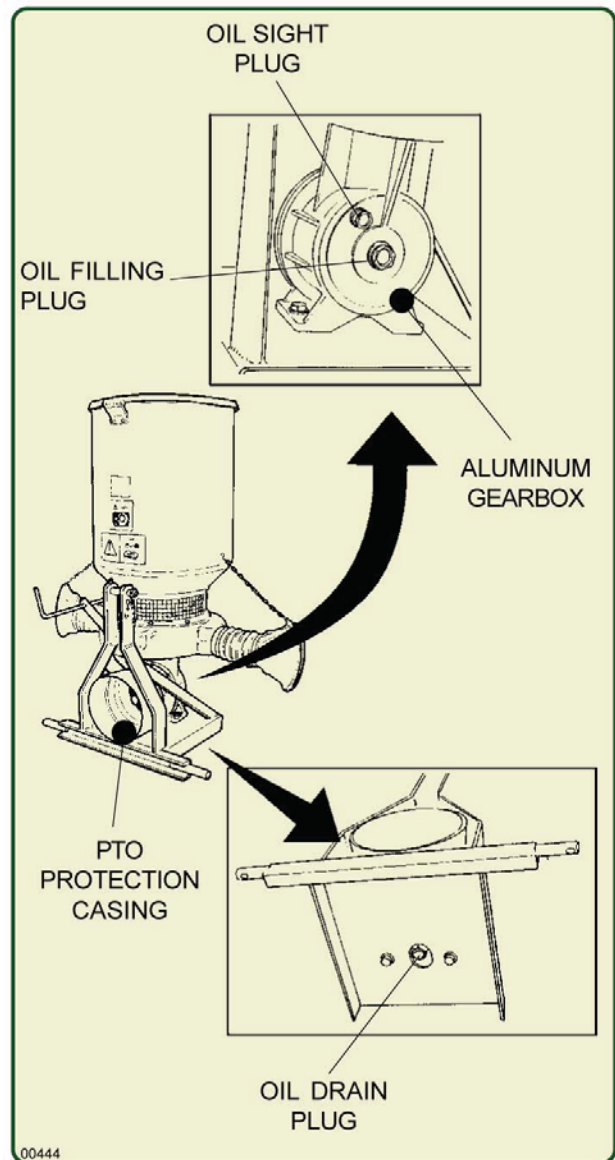


3.2 GEARBOX

Aluminum gearbox. On the side opposite the PTO is a sight plug for filling and checking the oil level.



The gearbox should work with PTO at 540 RPM. For a good result of the treatments, this condition **MUST ALWAYS BE OBSERVED** during the machine's operation. Utilization is permitted with speed rates ranging between 500 and 620 RPM.

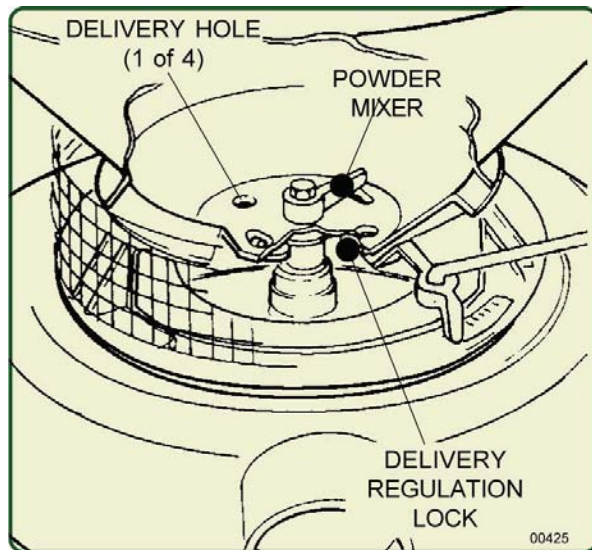
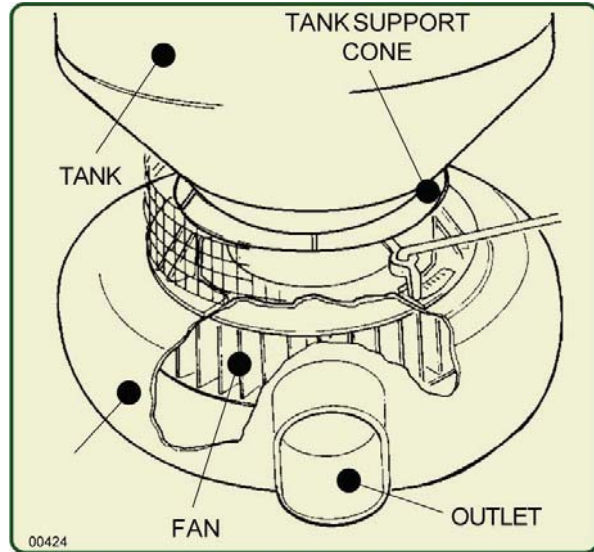


3.3 FAN

- Aluminum blower housing with two side outlets.
- Centrifugal fan is steel and balanced dynamically.

3.4 TANK SUPPORT CONE

- It is made of aluminum and has 4 holes to let the powder fall. The inside of the cone forms the bottom of the tank when it is mounted.
- On the bottom of the cone are arranged 4 holes for the outgoing of the powders.
- Underneath the cone, there is a register with 4 holes which allows the adjustment of the powder distribution.
- Between the lid with bushing, which attaches the register to the bottom, and the pinion driving the mixer, is a felt seal against powders.



3.5 TANK

- The tank is built of sheet metal and is fastened to the machine frame.



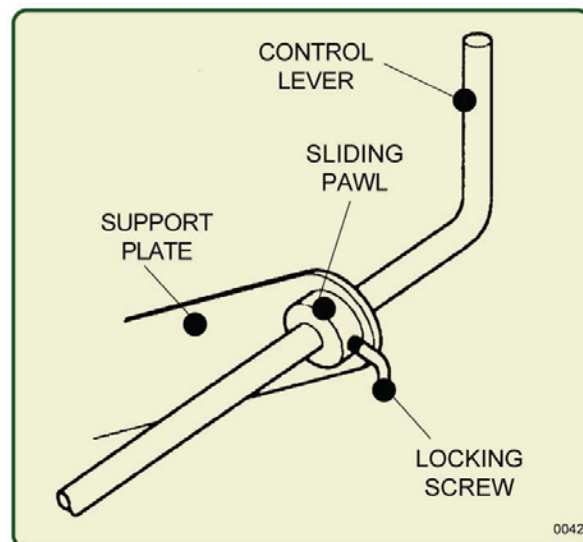
- Before opening the lid, stop the tractor and take the key out of the control panel.



- Check that the lid is closed before starting the tractor again.

3.6 CAPACITY REGULATOR

The control lever, which is fastened to the support plate fixing at the frame, is connected to the bronze delivery regulation lock with a split pin. A sliding pawl with locking screw on the lever is used to stop always in the desired position.

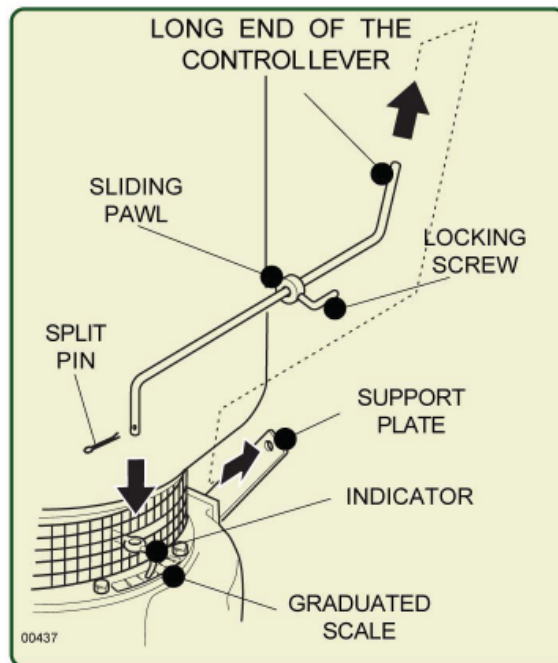


3.6 CAPACITY REGULATOR (CONTINUED)

The small square type indicator slides on a graduated scale from 0 to 4 shows the width of the opening of the distribution holes. "0" means full closure, "4" maximum delivery.

Installation:

1. Release the sliding pawl. Insert the long end of the control lever into the hole of the support plate, with a movement from right to left.
2. Remove the split pin. Insert the other end into the hole of the delivery regulation lock (indicator).
3. Re-insert the split pin.



3.7 GENERAL INFORMATION

APPLICATION RATES: Adjustable from 8 to 100 pounds per acre.

HOPPER: Formed steel and treated with anti-corrosive paint.
(See warning on page 4)

BLOWER: Dynamic balanced steel fan in aluminum housing.

DISTRIBUTORS: Two completely adjustable 360 degrees nozzles.

BEFORE OPERATING THE DUSTER:

1. Inspect for damage and loose or missing parts, make sure all fittings and drive components are secure.
2. Lubrication - *See Lubrication Section*
3. Check hopper for any foreign objects.

4 CONSTANT DELIVERY CONTROL

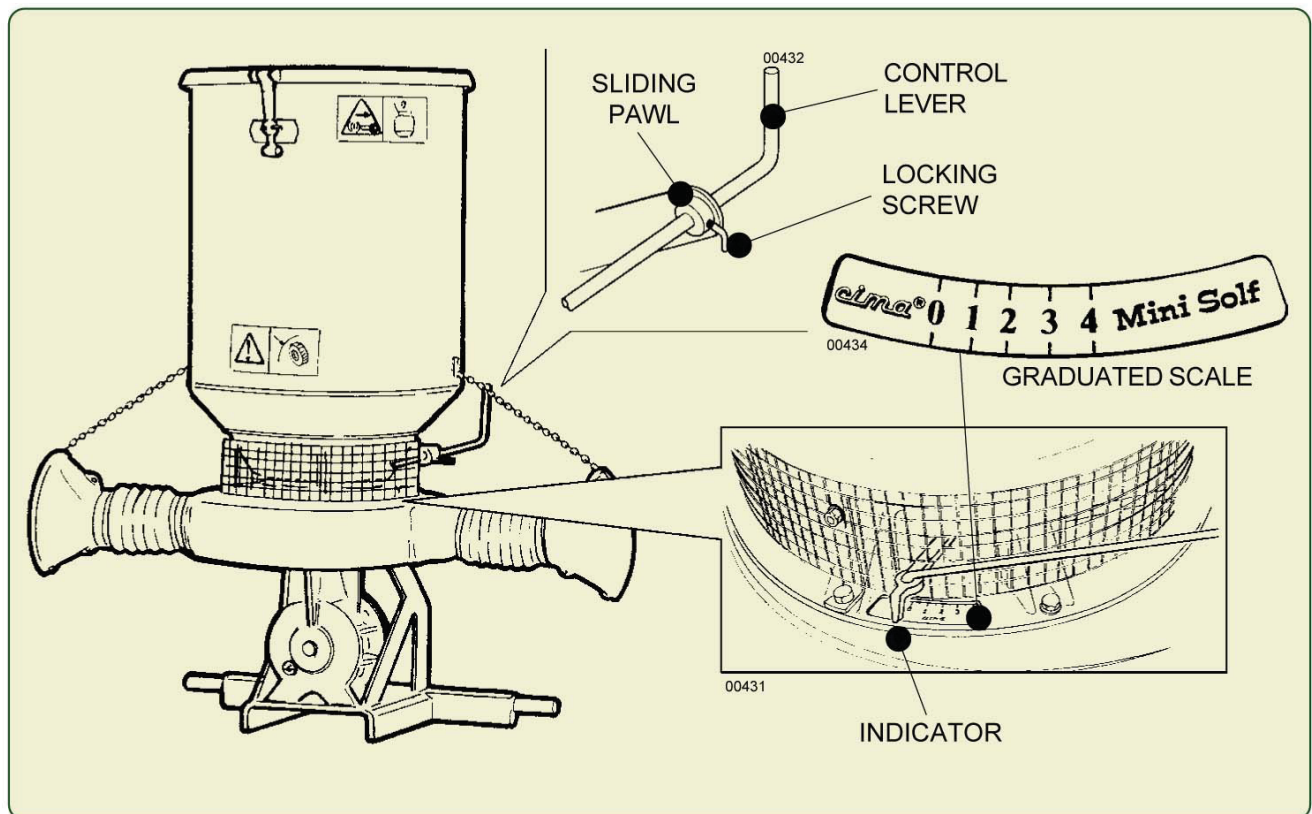
The products to be used with the duster have physical characteristics that can be strongly modified by the temperature and humidity conditions at the moment of treatment. Therefore it is not possible to obtain and set reliable delivery amounts corresponding to the various opening indexes of the delivery holes on the tank bottom.

To do a treatment with constant powder distribution, it is possible to set the on/off lever at the same opening position by the locking handle.

EXECUTION:

1. Using the on/off lever, find the delivery position suitable for your application.
2. Unscrew the locking screw of the sliding pawl and move the pawl up to reach the support plate, then lock it by completely screwing the locking screw.

This operation ensures the equal opening of the delivery holes during the entire treatment.



5 LIFTING & TRANSPORT OF DUSTER

THE FOLLOWING ACTIONS ARE NOT ALLOWED:



- Transporting or lifting the duster with residual quantities of product in the tank for purposes differing from its destined usage.
- The transporting of people, animals or things.
- The trailing of vehicles or equipment.

Road transport must take place in the complete observance of road regulations in force in the Country where the machine is used.



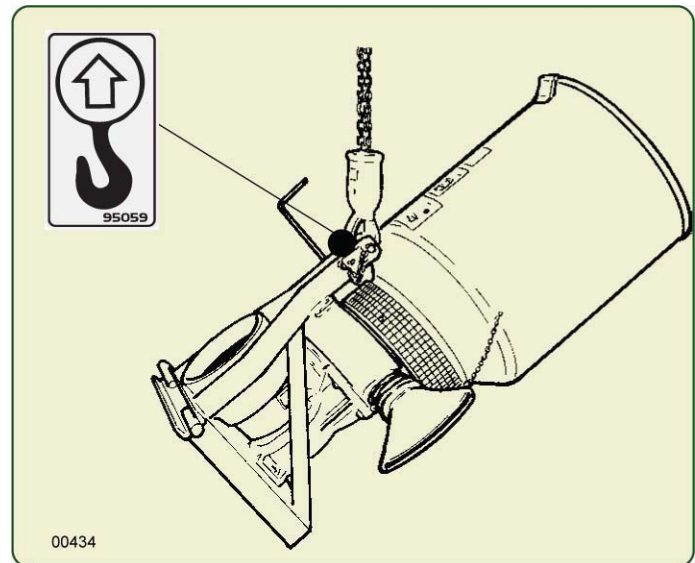
- When the footprint of the duster exceeds that of the tractor, the specific notice sign for overhanging loads needs to be attached on the rear.
- It is necessary to replicate the tractor's number plate and tail lights when these are covered by the machine.

The operator is responsible for possible defaults due to the non-observance of the said regulations.



Before carrying out any operation, it is essential to verify that no product residues are left in the tank.

1. Check that the cables or chains used for the lifting are adequate for the weight to be lifted.
2. Hook the machine through the specific support point indicated by the specific decal on the frame, checking all the parts involved in the operation.
3. Lift the machine, verifying that it is properly balanced; position the duster on the transporting vehicle in perfectly stable conditions.
4. During transport the machine must be immobilized and fastened to the carrier by way of suitable strapping.



6 MAINTENANCE



ALL OPERATIONS MUST BE CARRIED OUT WITH THE ENGINE SWITCHED OFF AND WITH THE IGNITION KEY REMOVED FROM THE CONTROL PANEL.

6.1 LUBRICATION



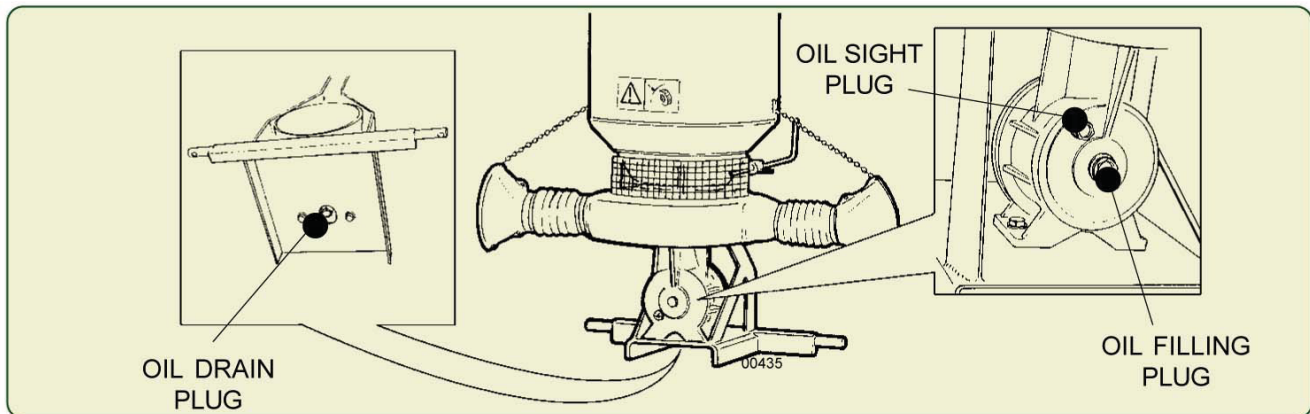
When the machine is sitting on a flat surface, the oil level inside the gearbox should always be visible through the sight plug situated on the guard cover.

The gearbox oil has to be replaced after 1000 working hours. A plug situated under the gearbox allows for the discharge of the oil.

It is absolutely necessary that the oil is always kept at the required level. Any possible filling up has to be carried out through the filling cap, either by inclining or by laying down the machine. Always use oil SAE 90.



AT THE BEGINNING OF THE TREATMENT SEASON AND BEFORE EVERY APPLICATION, CHECK THE OIL LEVEL IN THE GEARBOX.



DRIVESHAFT: The driveshaft must be lubricated before the duster is put into use. After that, grease when needed. It is also necessary, from time to time, to untelescope the driveshaft to clean and regrease tubing.

GEARBOX: Check gearbox oil level through sight gauge. Add SAE 90 weight oil when required.

AGITATOR: Under hopper and above blower is an extended grease zerk for lubricating agitator. Grease **weekly** or more often if required.

6.2 CLEANING & STORAGE

1. **Do not** let dust build up on blower fan. The best and easiest way to clean the fan is with "crushed walnut shells". this will insure that the blower operates to maximum efficiency and greatly reduces potential damage to the blower assembly.
2. **Do not** leave material in hopper for long periods of time.
3. Clean duster thoroughly before storing.
4. Check duster for needed repairs before time to dust again.
5. Always store machine where children and unskilled people cannot get to it.

7 OPERATION

7.1 BEFORE OPERATING YOUR DUSTER

BEFORE BEGINNING YOUR OPERATION:

- Inspect for damage and loose or missing parts. Make sure all fittings and drive components are secure.
- Lubrication - *See Lubrication Section 6.1.*
- Check hopper for any foreign objects.

7.2 OPERATION



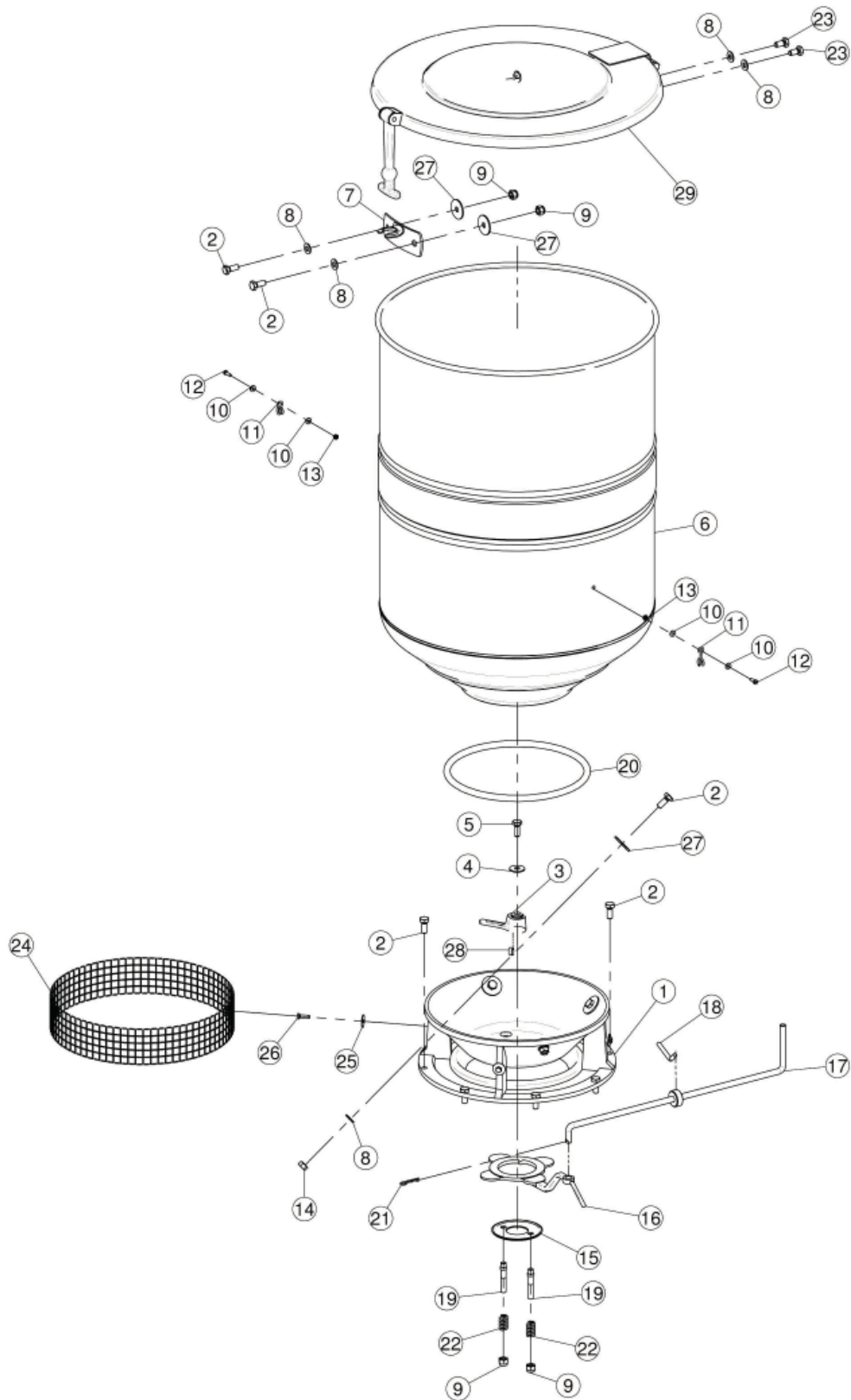
Carefully follow all instructions as stated in this operation manual. This includes safety, assembly, operation and maintenance of the duster.

1. Calculate the exact amount of sulfur needed for the treatment.
2. Carefully read the instructions for the manufacturer's use of the sulfur, check the conditions for use, the correct dosage and the expiration date.
3. Connect duster to the tractor 3-point hitch.
4. Push flow adjusting lever away from the tractor, which is the closed position.
5. Fill hopper with material being used. NOTE: Sulfur Powder Only
The use of any mineral base material such as copper sulfate will cause damage to the fan and housing assembly.
6. Start engine and engage tractor P.T.O. at engine idle.
7. Pull lever toward the tractor, which increases the powder flow.
8. After locating the delivery position that meets your required application rate, disengage P.T.O. and turn tractor engine off. Set the adjustable gray handle so the operator can easily return to that position.
9. Restart engine and engage P.T.O., gradually increase engine R.P.M. and start dusting.

Note: Small gray plastic handle is only a "stop set", thus little locking pressure is required.

8 PARTS

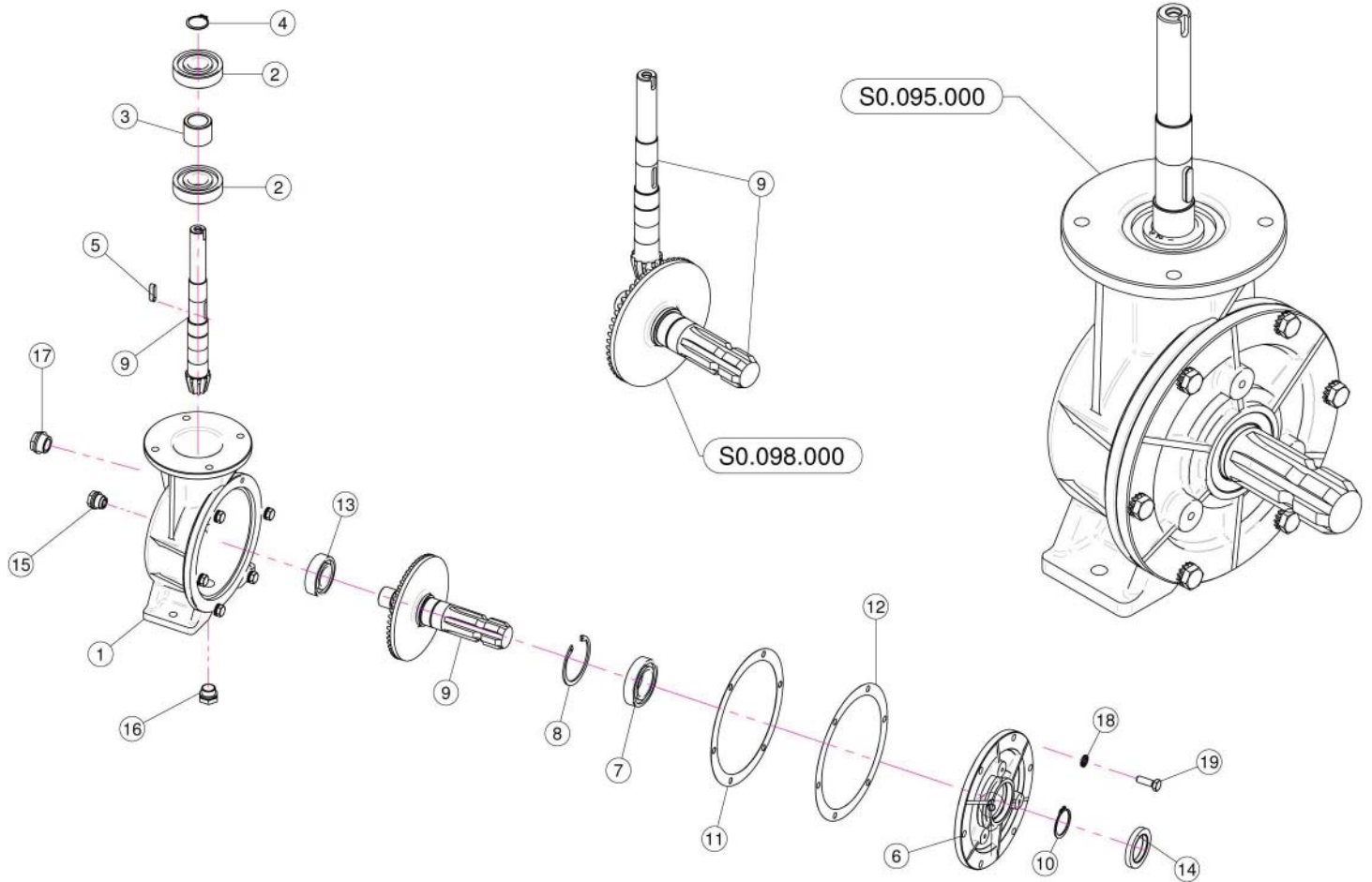
8.1 HOPPER ASSEMBLY S0.113.000



8.1 HOPPER ASSEMBLY S0.113.000

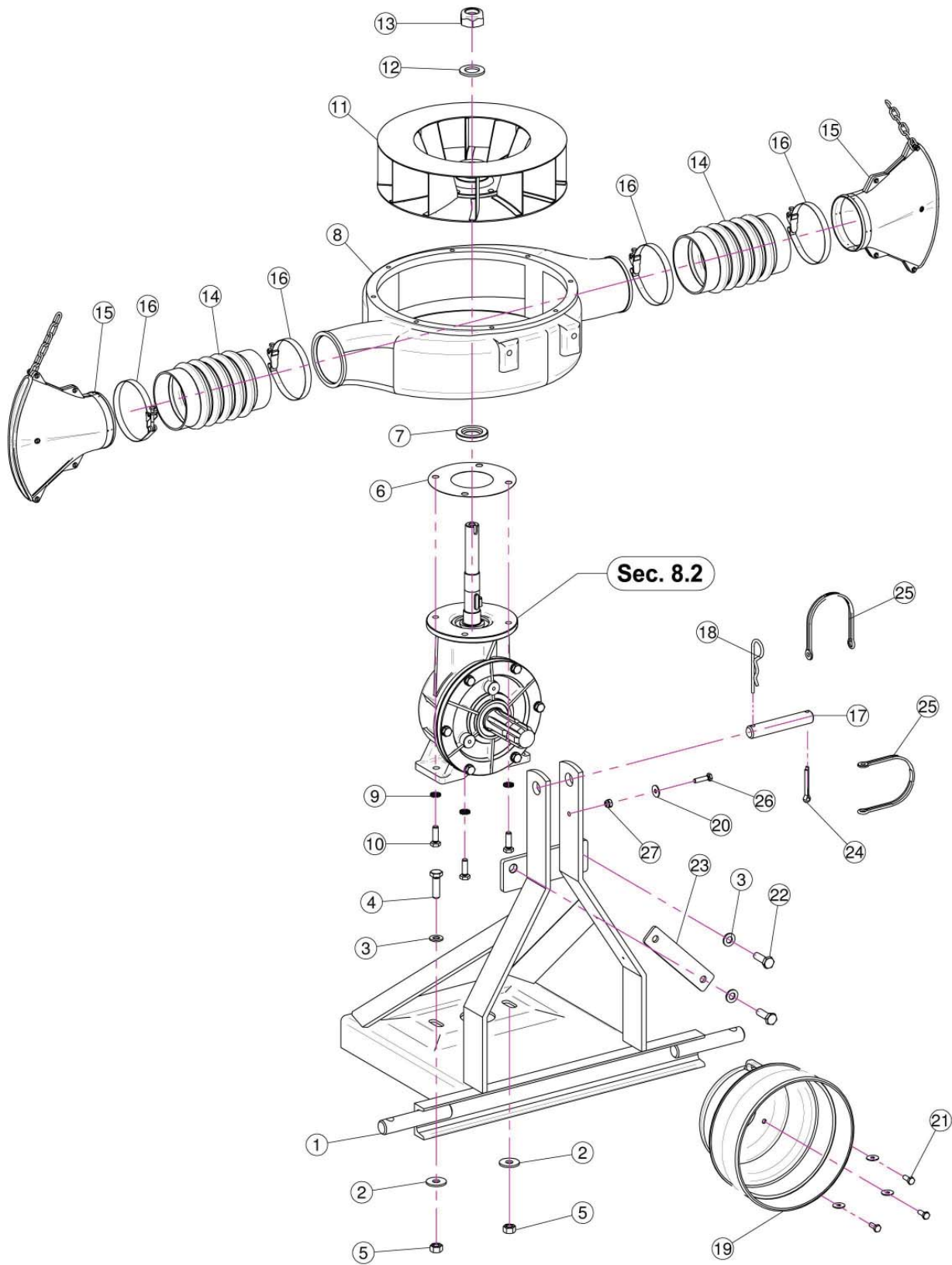
<u>REF #</u>	<u>QTY.</u>	<u>PART NO.</u>	<u>DESCRIPTION</u>
1	1	S0.080.000	Support Cone
2	14	TE.008.020T	Screw TE 8 x 20
3	1	S0.076.001	Powder Agitator
4	1	RP.008.024	Washer D.8 x 24
5	1	TE.008.025T	Screw TE M8 x 25
6	1	S0.081.100	Plate Tank
7	1	S0.112.000	Outside Tank Plate For Sheet
8	8	RP.008.000	Washer D.8
9	4	DA.008.0AG	Self Locking Nut M8
10	4	RP.004.000	INOX Washer D.4
11	2	S0.100.001	Hook
12	2	TC.04.12.07	Screw M4 x 12
13	2	DOT.04.5588	M4 Brass Nut
14	4	D0.08.5588G	Nut M8
15	1	S0.082.000	Cap
16	1	S0.077.000	Powder Spraying Gate
17	1	S0.099.000	Control Rod
18	1	S0.036.000	Special Screw M6
19	2	S0.083.000	Pin
20	1	S0.057.000	O-Ring
21	1	S0.100.002	Cup
22	2	S0.211.000	Spring
23	2	TE.008.016T	Screw TE M8 x 16
24	1	S0.119.000	Protection Wire Gauze
25	4	RP.005.020	Washer D.5 x 20
26	4	TE.005.016T	Bolt TE M5 x 16
27	6	RP.008.032	Washer D.8 x 32
28	1	L.06.06.12	Key 6 x 6 x 12
29	1	S0.117.000	Tank And Adjustment

8.2 GEARBOX ASSEMBLY S0.095.000



<u>REF #</u>	<u>QTY.</u>	<u>PART NO.</u>	<u>DESCRIPTION</u>
1	1	S0.026.000	Gearbox Body
2	2	6305	Bearing
3	1	S0.033.000	Spacer
4	1	E0.025.000	External D.25 Circlip
5	1	L.06.06.25	Key 6 x 6 x 25
6	1	S0.016.000	Plate Gearbox Body
7	1	K6.007.000	Bearing
8	1	I0.062.000	Internal D.62 Circlip
9	1	S0.098.000	Crow Wheel & Pinion
10	1	E0.035.000	External D.35 Circlip
11	1	S0.015.003	Gasket
12	1	S0.015.002	Gasket
13	1	6205	Bearing
14	1	35x52x07	Oil Seal
15	1	S0.087.000	Oil Level Indicator
16	1	TM.038.000	Packing
17	1	TM.012.000	Packing
18	6	RD.008.000	Tab Washer D.8
19	6	TE.008.025T	Bolt TE M8 x 25

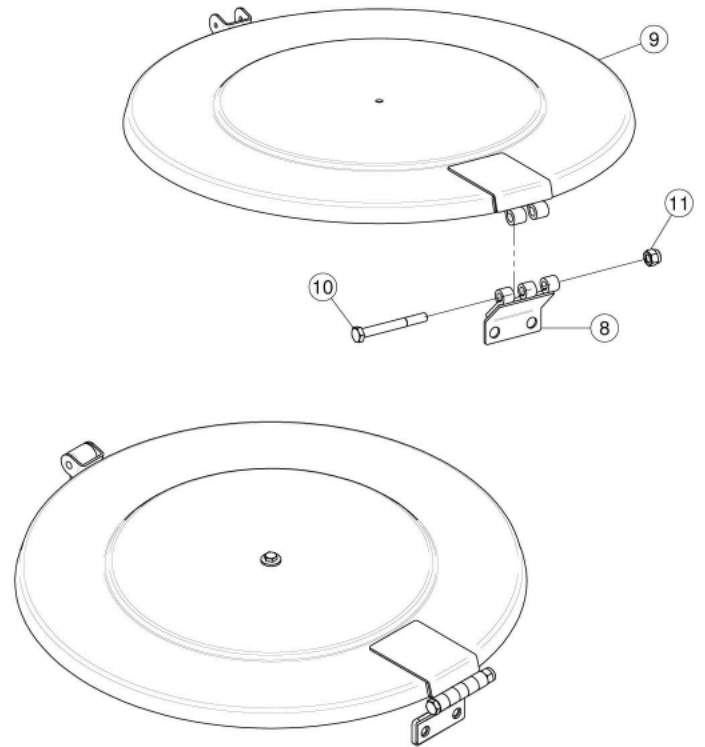
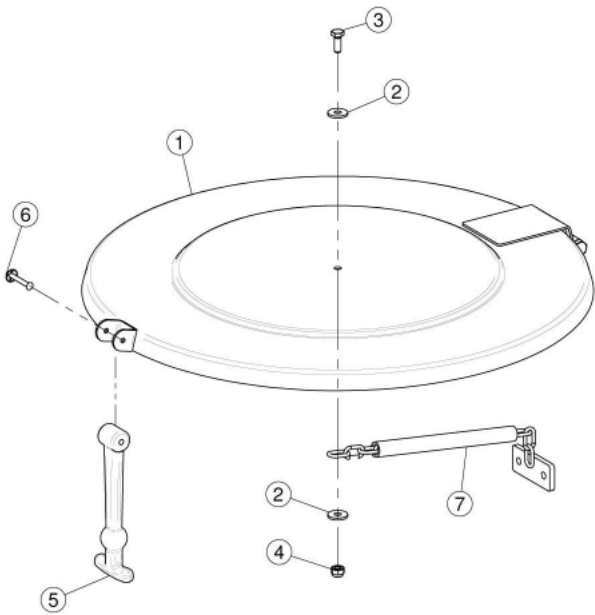
8.3 FRAME & FAN ASSEMBLY S0.108.000



8.3 FRAME & FAN ASSEMBLY

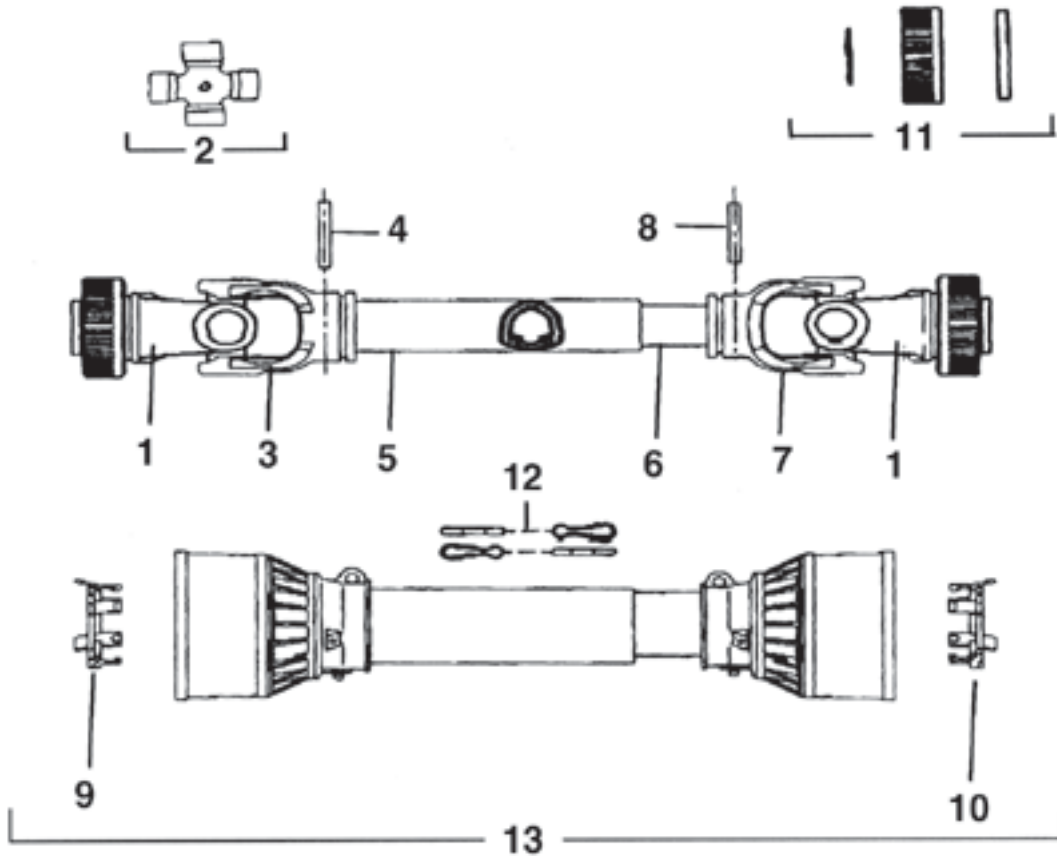
<u>REF #</u>	<u>QTY.</u>	<u>PART NO.</u>	<u>DESCRIPTION</u>
1	1	S0.003.010	Frame
2	2	RP.010.030	Washer D.10 x 30 mm
3	4	RP.010.000	Washer D.10
4	2	TE.010.035T	Screw TE 10 x 35
5	2	D0.10.5587G	Nut M10
6	1	S0.085.000	Gasket
7	1	25x47x07	Lip Seal 25 x 47 x 7
8	1	S0.047.000	Fan Housing
9	4	RD.008.000	Tab Washer D.8
10	4	TE.008.025T	Screw TE M8 x 25
11	1	S0.074.000	Fan
12	1	RP.022.000	Washer D.22
13	1	DA.022.0BF.20	Nut M22
14	2	S0.050.000	Flexible Sleeve
15	2	S0.049.000	Nozzle
16	4	S0.051.000	Clamp D.92
17	1	04.076.000	Pin
18	1	00.100.004	Split Pin D.4
19	1	02.440.000	Shaft Cone D.210
20	3	RP.006.018	Washer D.6 x 18
21	3	TE.006.016T	Screw TE M6 x 16
22	2	TE.010.030T	Screw TE M10 x 30
23	1	S0.120.000	Support For control Rod
24	1	CP.006.040I	Pin D.6 Lg.40
25	2	21.183.000	Cap Stop
26	1	TE.006.025T	Screw TE M6 x 25
27	1	DA.006.0AG	Self Locking Nut - High M6

8.4 LID ASSEMBLY S0.117.000



<u>REF #</u>	<u>QTY.</u>	<u>PART NO.</u>	<u>DESCRIPTION</u>
1	1	S0.114.000	Sheet Iron
2	2	RP.006.018	Large Washer D.6 x 18
3	1	TE.006.016T	Screw TE M6 x 16
4	1	DA.006.0AG	Self Locking Nut - High M6
5	1	S0.229.000	Hood Tie Rod
6	1	20.222.000	Small Nail & Washer
7	1	S0.227.000	Small Nail & Washer
8	1	S0.116.000	Hinge
9	1	S0.225.000	Sheet Iron S.225 Hinge
10	1	TE.008.070	Screw TE M8 x 70
11	1	DA.008.0AG	Self Locking Nut M8

8.5 DRIVELINE ASSEMBLY



<u>REF #</u>	<u>QTY.</u>	<u>PART NO.</u>	<u>DESCRIPTION</u>
1	2	572020351	RS Yoke
2	2	41202	#2 Cross Kit
3	1	204026851	Yoke, Outer Tube
4	1	341048000	Roll Pin
5	1	225050635	Outer Drive Tube
6	1	225040635	Inner Drive Tube
7	1	204026852	Yoke, Inner Tube
8	1	341036000	Roll Pin
9	1	255020005	Bearing Outer Shield
10	1	255020006	Bearing Inner Shield
11	2	240002451	RS Collar Kit
12	2	252000001	Safety Chain
13	1	5N02076NN	Complete Shield

9 LIMITED WARRANTY



GEARMORE, INC., warrants each new Gearmore product to be free from defects in material and workmanship for a period of twelve (12) months from date of purchase to the original purchaser. This warranty shall not apply to implements or parts that have been subject to misuse, negligence, accident, or that have been altered in any way.

Our obligation shall be limited to repairing or replacement of any part, provided that such part is returned within thirty (30) days from date of failure to Gearmore through the dealer from whom the purchase was made, transportation charges prepaid.

This warranty shall not be interpreted to render us liable for injury or damages of any kind or nature, direct, consequential or contingent, to person or property. This warranty does not extend to loss of crops, loss because of delay in harvesting or any other expenses, for any other reasons.

Gearmore in no way warrants engines, tires, or other trade accessories, since these items are warranted separately by these respective manufacturers.

Gearmore reserves the right to make improvements in design or changes in specification at any time, without incurring any obligations to owners or units previously sold.

GEARMORE, INC.
13477 Benson Ave.
Chino, CA 91710

Always refer to and heed machine operating warning decals on machine.

*To validate the warranty on this product, please log-in to our website - www.gearmore.com.
You will find "warranty registration" listed at the top of our homepage.*