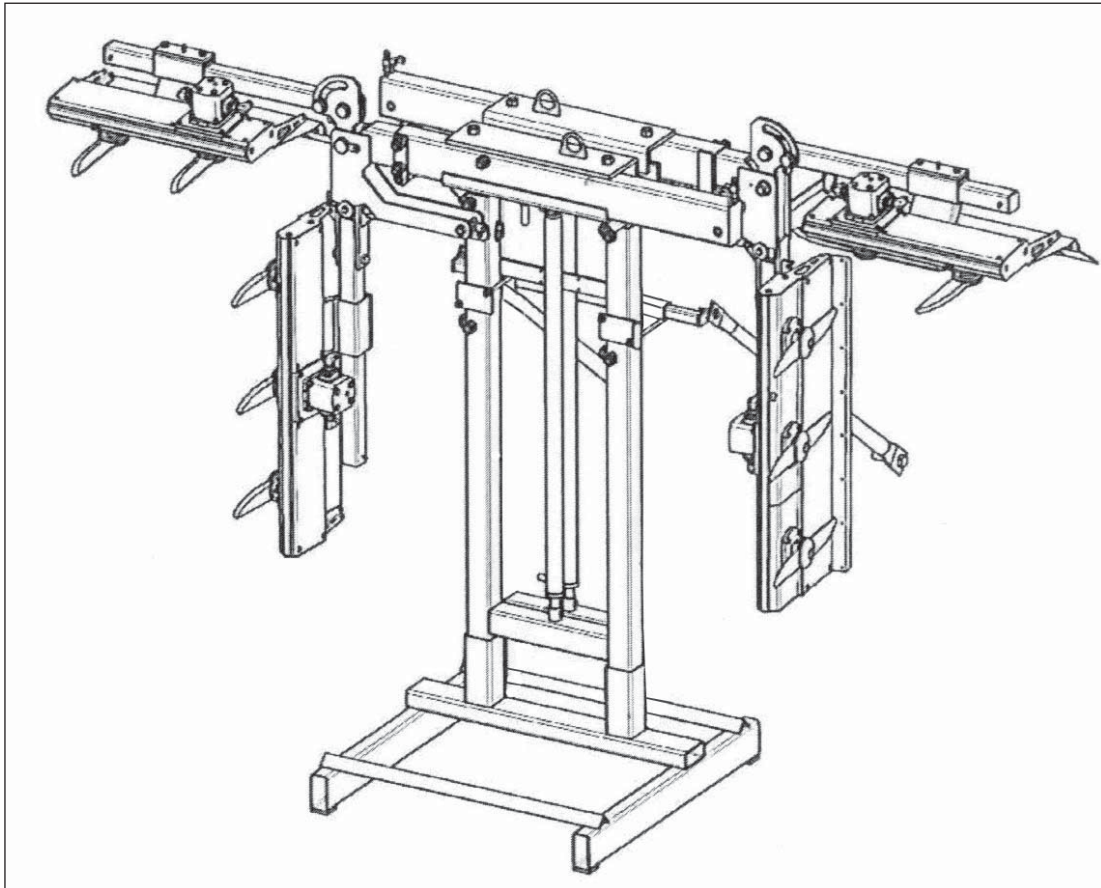




**COLLARD®**

## VINE TRIMMERS



### Parts Manual For P2200

**Code #0113 2400 Simple-Narrow Frame, 3 Blade**

**Code #0113 2450 Simple-Narrow Frame, 4 Blade**

*Marketed by:*



13477 Benson Ave. • Chino, CA • Ph: 909/548-4848 • Fax: 909/548-4747

# TABLE OF CONTENTS

| <u>SECTION</u> | <u>DESCRIPTION</u> .....                               | <u>PAGE</u>    |
|----------------|--|----------------|
| 1              | <b>Introduction</b> .....                              | <b>1</b>       |
| 1.1            | Operator's Responsibility .....                        | 1              |
| 2              | <b>Spare Parts - Frames</b> .....                      | <b>2 - 12</b>  |
| 2.1            | Complete Frame ..... (PL 4872).....                    | 2              |
| 2.2            | Complete Vertical Frame ..... (PL 4873).....           | 3              |
| 2.3            | Complete Width Frame ..... (PL 4874).....              | 4              |
| 2.4            | Complete Arms ..... (PL 4876).....                     | 5              |
| 2.5            | Complete Angle Brake Assy ..... (PL 4365).....         | 6              |
| 2.6            | Complete Hydraulic System ..... (PL 4875).....         | 7              |
| 2.7            | Support For Side Element ..... (PL 3601).....          | 8              |
| 2.8            | Top Element Support ..... (PL 4128).....               | 9              |
| 2.9            | Cylinder DE 35 - 25 ..... (PL 1604).....               | 10             |
| 2.10           | Simple Narrow Frame ..... (PL 4870).....               | 11             |
| 2.11           | Braces ..... (PL 2261).....                            | 12             |
| 3              | <b>Spare Parts - Cutting Elements</b> .....            | <b>13 - 35</b> |
| 3.1            | 51" Cutting Element RH ..... (PL 3686).....            | 13-14          |
| 3.2            | 51" Cutting Element LH ..... (PL 3688).....            | 15-16          |
| 3.3            | 63" Cutting Element RH ..... (PL 3548).....            | 17-18          |
| 3.4            | 63" Cutting Element LH ..... (PL 3550).....            | 19-20          |
| 3.5            | Hydraulic Motor 10cc ..... (PL 3539).....              | 21             |
| 3.6            | Blade Assy Long RH ..... (PL 3540).....                | 22             |
| 3.7            | Motor Blade Assy Short RH ..... (PL 3541).....         | 23             |
| 3.8            | Blade Hsg. Assy. Long RH ..... (PL 3556).....          | 24             |
| 3.9            | Motor Blade Hsg. Assy Short RH ..... (PL 3557).....    | 25             |
| 3.10           | Blade Assy Long LH ..... (PL 3543).....                | 26             |
| 3.11           | Motor Blade Assy Short LH ..... (PL 3555).....         | 27             |
| 3.12           | Blade Hsg. Assy. Long LH ..... (PL 3558).....          | 28             |
| 3.13           | Motor Blade Hsg. Assy Short LH ..... (PL 3559).....    | 29             |
| 3.14           | Complete Closing ..... (PL 3542).....                  | 30             |
| 3.15           | 30.7" Cutting Element RH ..... (PL 3552).....          | 31             |
| 3.16           | 30.7" Cutting Element LH ..... (PL 3602).....          | 32             |
| 3.17           | Upper Element Plastic Protection ..... (PL 3665).....  | 33             |
| 3.18           | Independent Width Adjustment ..... (PL 4868).....      | 34             |
| 3.19           | Double Effect Cylinder 35 - 18 ..... (PL 1601).....    | 35             |
| 4              | <b>Hydraulic Schematics</b> .....                      | <b>36 - 38</b> |
| 4.1            | Electric Control ..... (PL 4866).....                  | 36             |
| 4.2            | Hydraulic System Electric Control ..... (PL 4867)..... | 37             |
| 4.3            | Electric Control Handle ..... (PL 4858).....           | 38             |

# 1 INTRODUCTION

Congratulations on your selection of a Collard Vine Trimmer.

## **HISTORY**

The COLLARD family has been servicing grape growers for 5 generations. Andre Collard invented the first mechanical vine trimmer in 1962. Since that development COLLARD has made numerous improvements and continues to be the world leader in trimmers.

## **QUALITY CONTROL**

Every stage in the production process is controlled to guarantee superior quality. After final assembly, each machine is run through a detailed test where everything is checked - rotation speed, operating pressure, hydraulic cylinders, flow rates, etc. All this is done to insure that every machine leaving the factory is in perfect working order.



## 1.1 OPERATOR'S RESPONSIBILITY

Safe, efficient and trouble free operation of your Vine Trimmer requires that you and anyone else who will be operating or maintaining the machine, read and understand the Safety, Installation, Operation, Maintenance, and Troubleshooting information contained within the Operator's Manual.

Keep this manual handy for frequent reference and to pass on to new operators or owners. Call your tractor dealer if you need assistance, information or additional copies of the manuals.

**OPERATOR ORIENTATION** - The directions left, right, front and rear, as mentioned throughout this manual, are as seen from the driver's seat and facing in the direction of travel.

NAME: \_\_\_\_\_

PURCHASED FROM: \_\_\_\_\_

DATE OF PURCHASE: \_\_\_\_\_

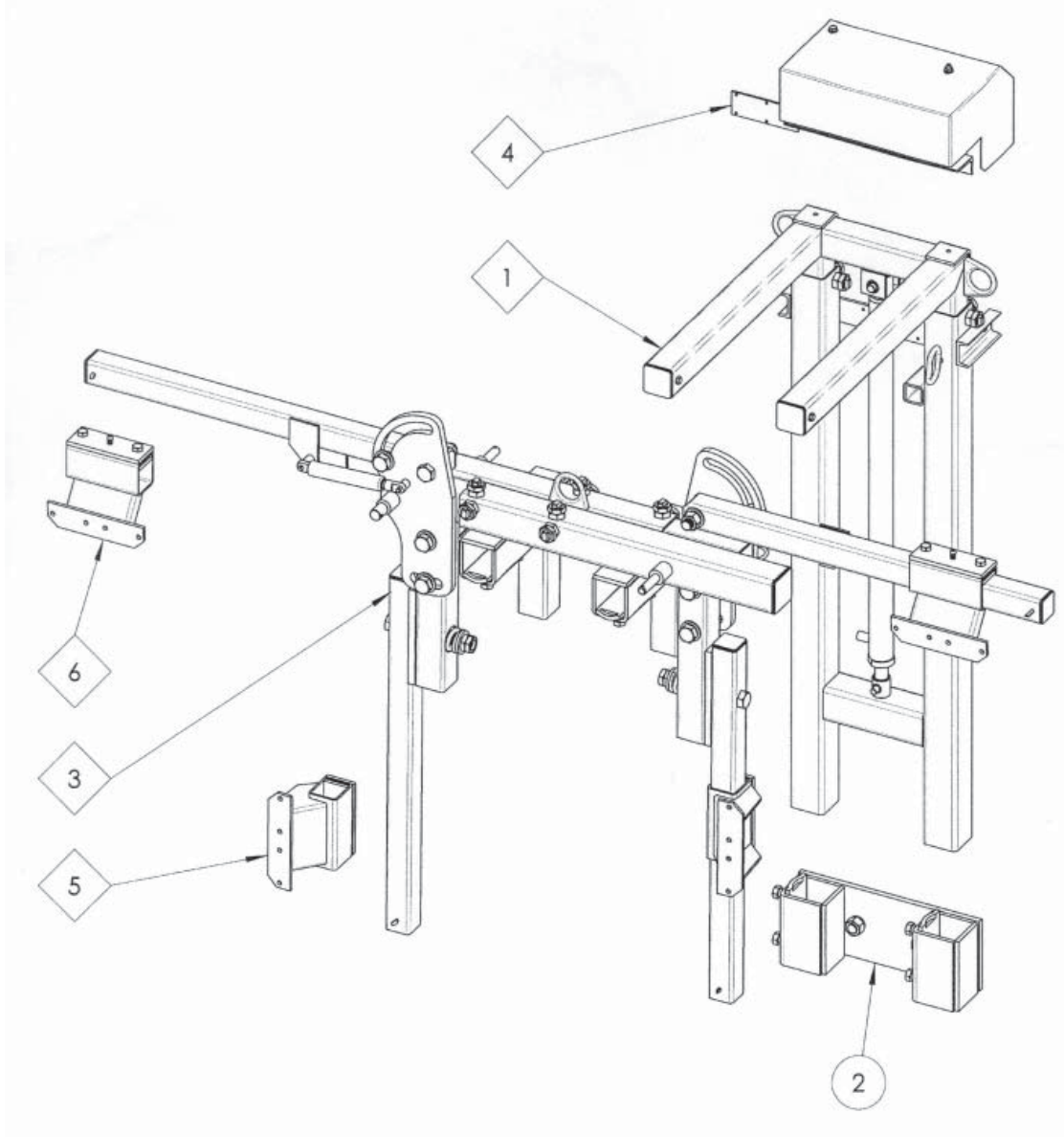
CODE NUMBER: \_\_\_\_\_

SERIAL NUMBER: \_\_\_\_\_

## 2 SPARE PARTS - FRAMES

### 2.1 COMPLETE FRAME - CODE 0113 2412

PL 4872

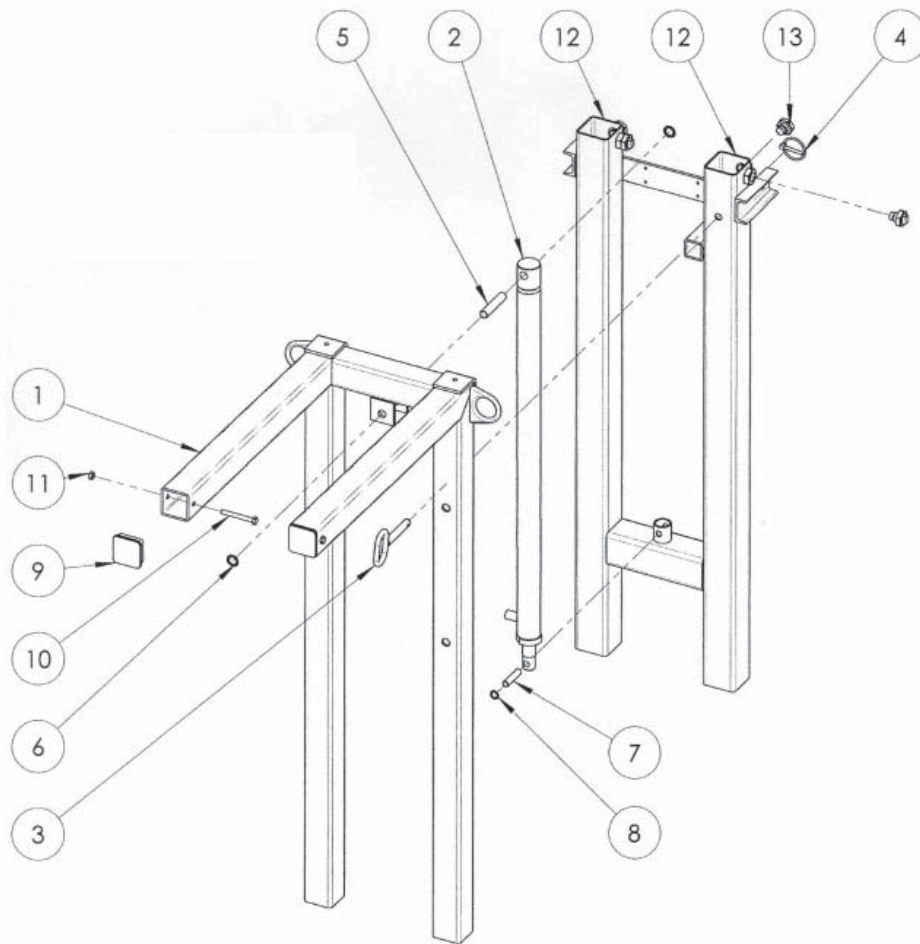


| Ref. | Qty. | Part No. | Description                        | Assy.          |
|------|------|----------|------------------------------------|----------------|
| 1    | 1    | 01132416 | Complete Vertical Frame            | PL 4873 - Pg 3 |
| 2    | 1    | 00001475 | Lower Fixing                       |                |
| 3    | 1    | 01132417 | Complete Width Frame               | PL 4874 - Pg 4 |
| 4    | 1    | 01132415 | Complete Hydr. System w/Protection | PL 4875 - Pg 7 |
| 5    | 2    | 01050029 | Side Element Support               | PL 3601 - Pg 8 |
| 6    | 2    | 01050179 | Complete Top Support               | PL 4128 - Pg 9 |

## 2 SPARE PARTS - FRAMES

### 2.2 COMPLETE VERTICAL FRAME - CODE 0113 2416

PL 4873

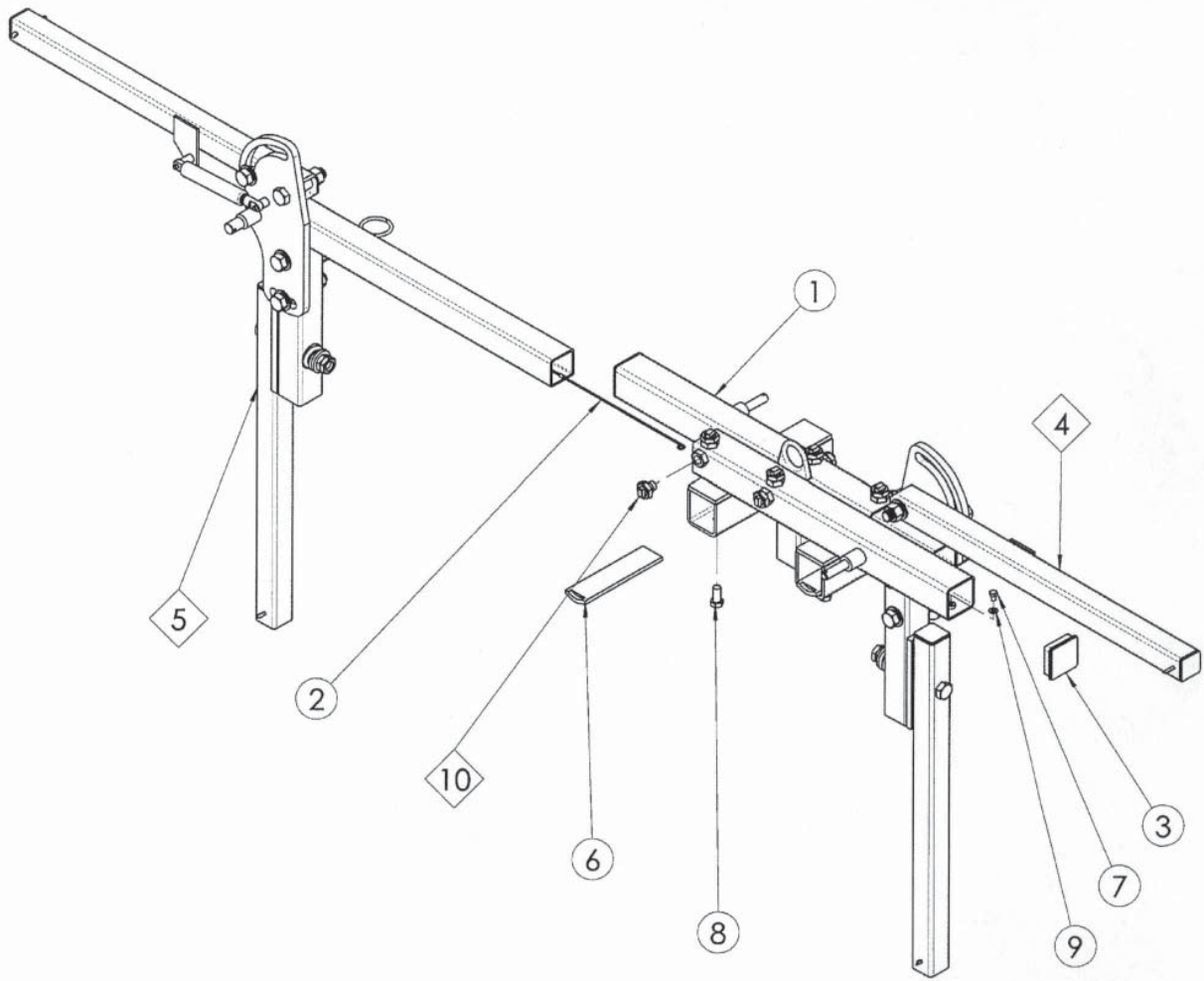


| Ref. | Qty. | Part No. | Description                     | Assy.           |
|------|------|----------|---------------------------------|-----------------|
| 1    | 1    | 01132402 | Male Frame                      |                 |
| 2    | 1    | 05019556 | Cylinder DE 35-25 Stroke 700 mm | PL 1604 - Pg 10 |
| 3    | 1    | 05016220 | Pin Ø14                         |                 |
| 4    | 1    | 05014050 | Bolt Pin Ø6 Zn                  |                 |
| 5    | 1    | 00480443 | Axle Ø16                        |                 |
| 6    | 2    | 05014320 | Washer Self Locking Ø16         |                 |
| 7    | 1    | 00528325 | Axle For Cylinder               |                 |
| 8    | 2    | 05014318 | Washer Self Locking Ø12         |                 |
| 9    | 2    | 05017886 | Cap For Brace 60 x 4            |                 |
| 10   | 2    | 05010193 | Screw TH M8 x 70                |                 |
| 11   | 2    | 05011206 | Nut M8 Hu                       |                 |
| 12   | 1    | 01132404 | Female Vertical Frame           |                 |
| 13   | 4    | 00002059 | Guide Block Lg. 8 mm            | PL 4365 - Pg 6  |

## 2 SPARE PARTS - FRAMES

### 2.3 COMPLETE WIDTH FRAME - CODE 0113 2417

PL 4874

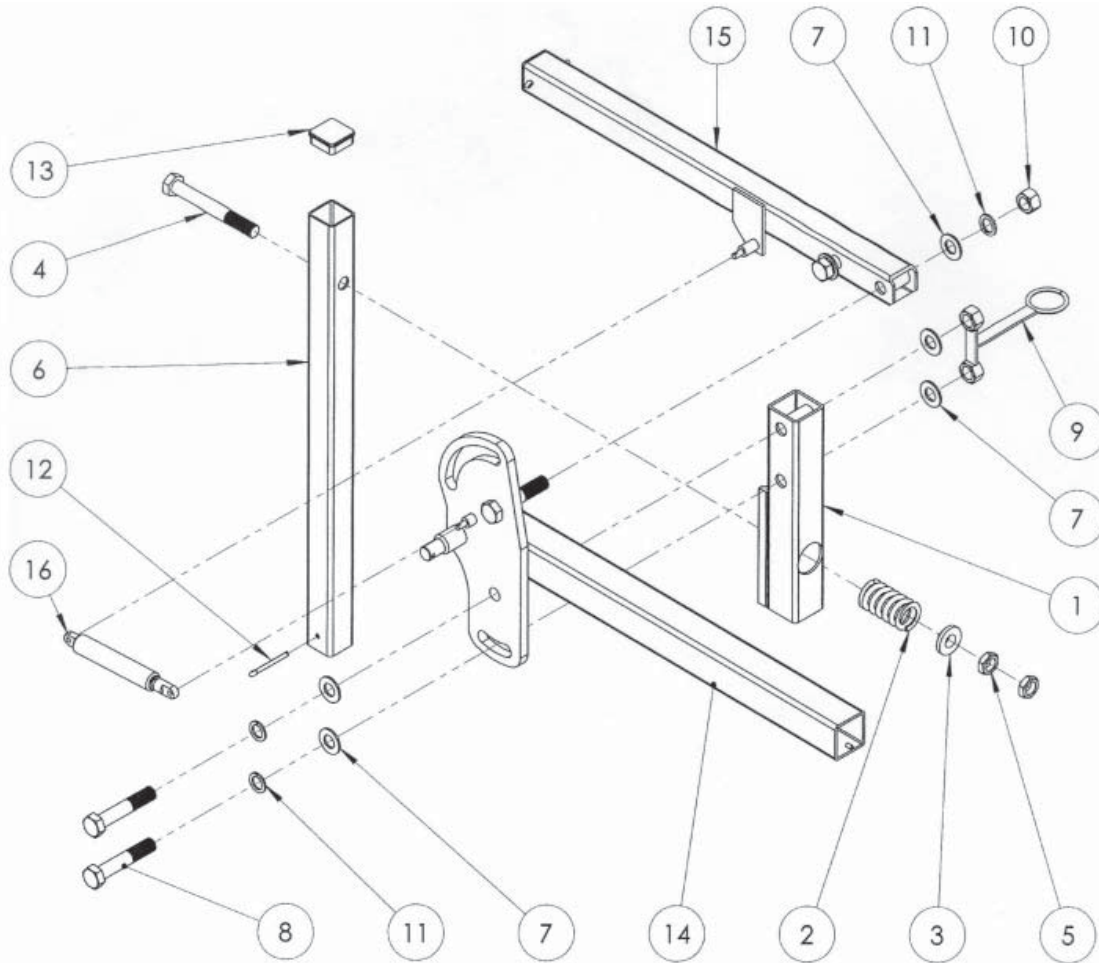


| Ref. | Qty. | Part No. | Description               | Assy.          |
|------|------|----------|---------------------------|----------------|
| 1    | 1    | 01132405 | Central Support           |                |
| 2    | 2    | 01132409 | Width Adjustment Security |                |
| 3    | 2    | 05017861 | Cap                       |                |
| 4    | 1    | 01132413 | Complete Arms             | PL 4876 - Pg 5 |
| 5    | 1    | 01132413 | Complete Arms             | PL 4876 - Pg 5 |
| 6    | 2    | 05029516 | Flat Bar                  |                |
| 7    | 2    | 05010015 | Screw TH M8 x 12          |                |
| 8    | 4    | 05010038 | Screw TH M14 x 30         |                |
| 9    | 2    | 05015026 | Washer M8                 |                |
| 10   | 8    | 00002059 | Guide Bloc Lg 8 mm        | PL 4365 - Pg 6 |

## 2 SPARE PARTS - FRAMES

### 2.4 COMPLETE ARMS - CODE 0113 2413

PL 4876



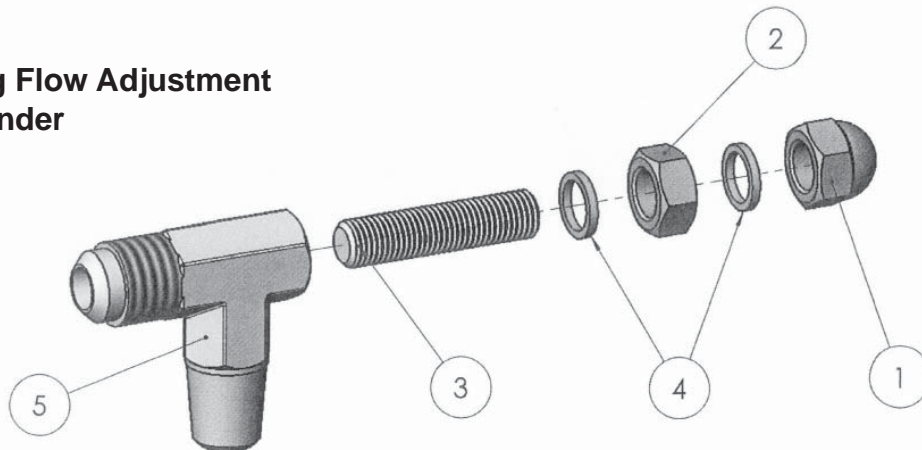
| Ref. | Qty. | Part No. | Description          | Assy. |
|------|------|----------|----------------------|-------|
| 1    | 1    | 00527008 | Articulated Arm      |       |
| 2    | 1    | 05011951 | Spring               |       |
| 3    | 1    | 05005305 | Spring Washer        |       |
| 4    | 1    | 05010037 | Screw TH M20 x 160   |       |
| 5    | 2    | 05011208 | Nut Hu M20 Zn        |       |
| 6    | 1    | 00527009 | Retractable Side Arm |       |
| 7    | 5    | 05015022 | Washer M20 Zn        |       |
| 8    | 2    | 05010030 | Screw TH M20 x 120   |       |
| 9    | 1    | 00250032 | Tightening Part      |       |
| 10   | 1    | 05011200 | Nut H M20 Zn         |       |
| 11   | 3    | 05015315 | Washer W20           |       |
| 12   | 1    | 05014112 | Pin V 6 x 70         |       |
| 13   | 1    | 05017852 | Tap                  |       |
| 14   | 1    | 01132401 | Male Horizontal Arm  |       |
| 15   | 1    | 01132414 | Complete Upper Arm   |       |
| 16   | 1    | 05047728 | Gaz Spring           |       |

## 2 SPARE PARTS - FRAMES

### 2.5 COMPLETE ANGLE BRAKE ASSY - CODE 0500 9086

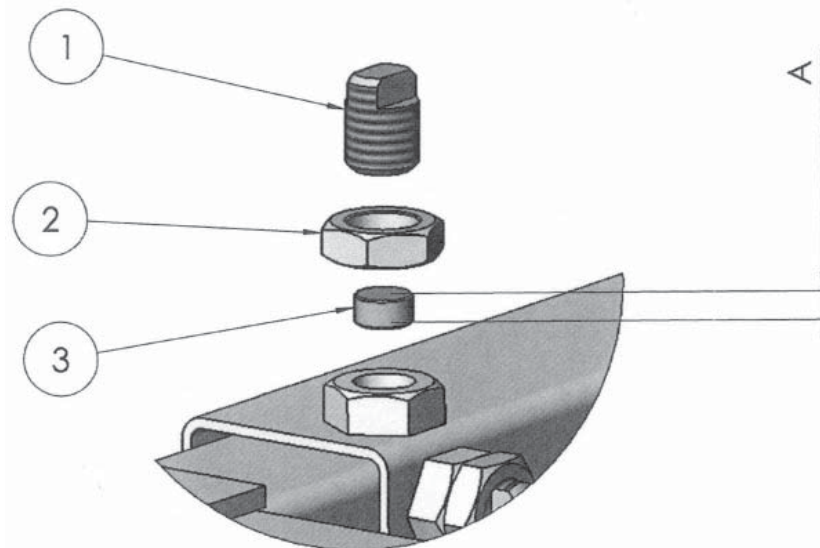
PL 4365

#### Feeding Flow Adjustment On Cylinder



| Ref. | Qty. | Part No. | Description           | Assy. |
|------|------|----------|-----------------------|-------|
| 1    | 1    | 05011204 | Nut M8                |       |
| 2    | 1    | 05011206 | Nut M8 Hu             |       |
| 3    | 1    | 05010830 | Screw STHC M8 x 35    |       |
| 4    | 2    | 05002009 | Joint Ø8.2 x 11.2 x 1 |       |
| 5    | 1    | 05009081 | Angle 1/16" JIC       |       |

#### Play Adjustment On Sliding Tube



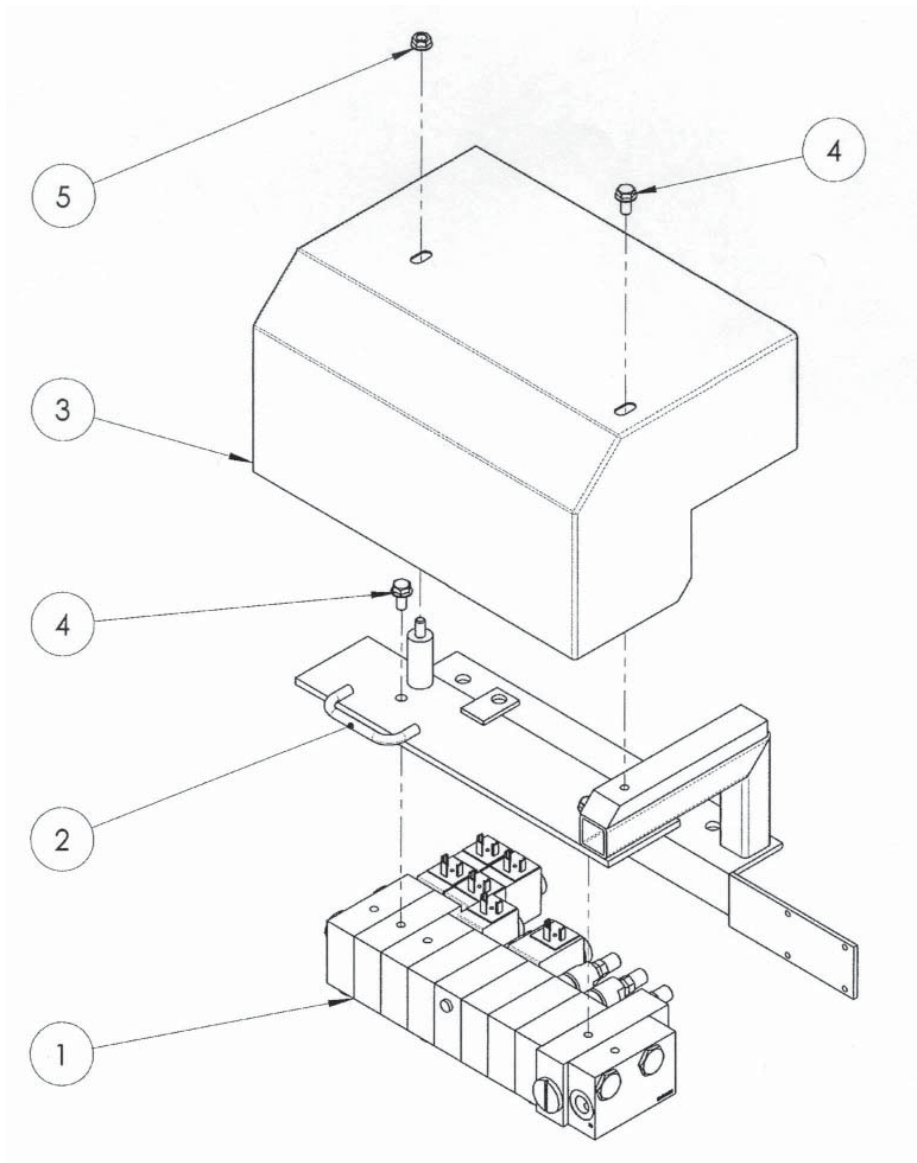
| Ref. | Qty. | Part No. | Description           | Assy. |
|------|------|----------|-----------------------|-------|
| 1    |      | 05010814 | Screw M20             |       |
| 2    |      | 05011208 | Nut HM20 Zn           |       |
| 3    |      | 05014315 | Plastic Plug A = 4mm  |       |
|      |      | 05014309 | Plastic Plug A = 8mm  |       |
|      |      | 05014316 | Plastic Plug A = 12mm |       |
|      |      | 05014314 | Plastic Plug A = 16mm |       |



## 2 SPARE PARTS - FRAMES

### 2.6 COMPLETE HYDRAULIC SYSTEM w/PROTECTION - CODE 0113 2415

PL 4875

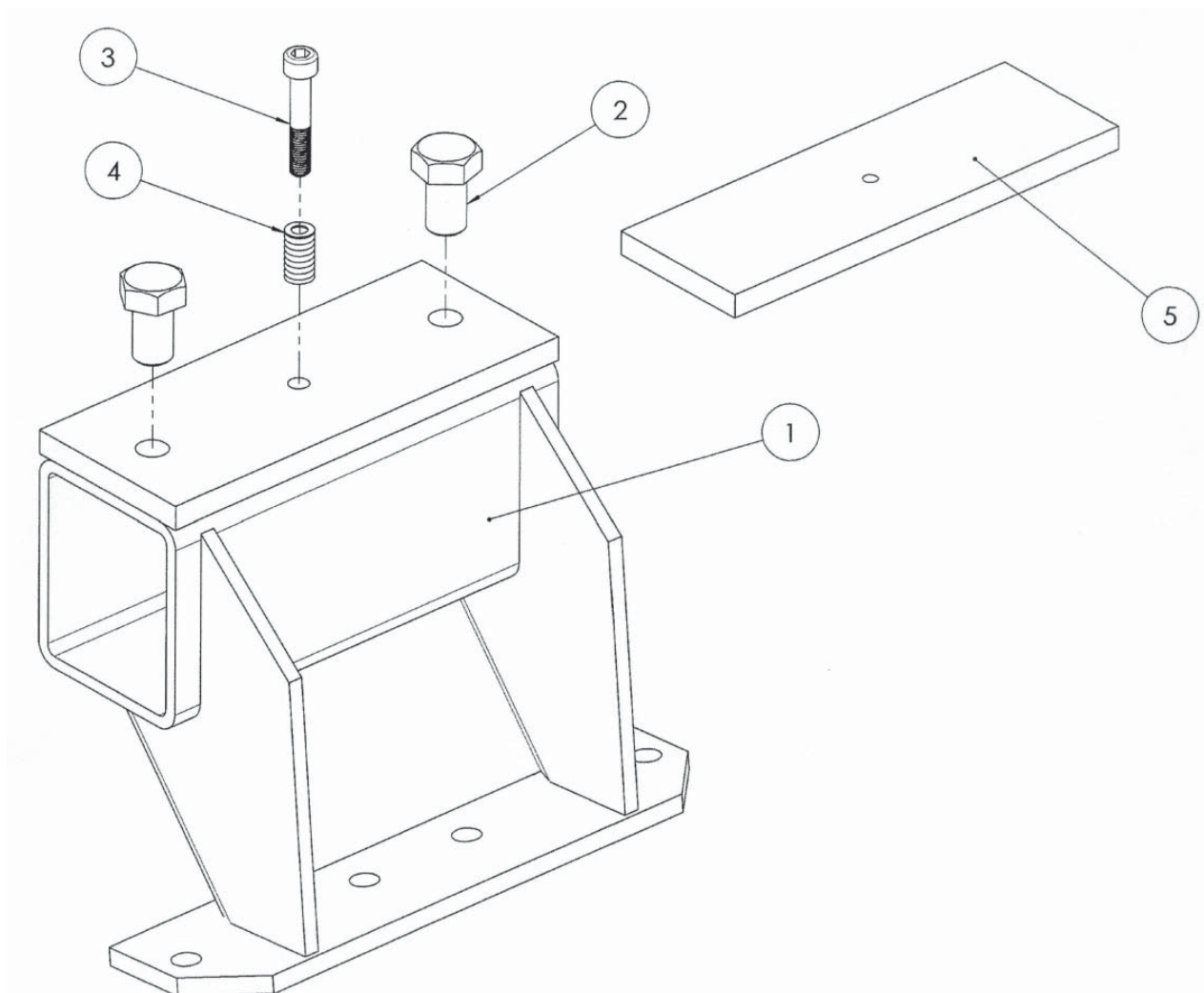


| Ref. | Qty. | Part No. | Description                   | Assy. |
|------|------|----------|-------------------------------|-------|
| 1    | 1    | 05022935 | Electric Controls Distributor |       |
| 2    | 1    | 01132403 | Distributor Support           |       |
| 3    | 1    | 05030606 | Casing                        |       |
| 4    | 3    | 05011877 | Screw Tensilock M8 x 16       |       |
| 5    | 1    | 05011216 | Nut Tensilok M8 Zn            |       |

## 2 SPARE PARTS - FRAMES

### 2.7 SUPPORT FOR SIDE ELEMENT - CODE 0105 0029

PL 3601

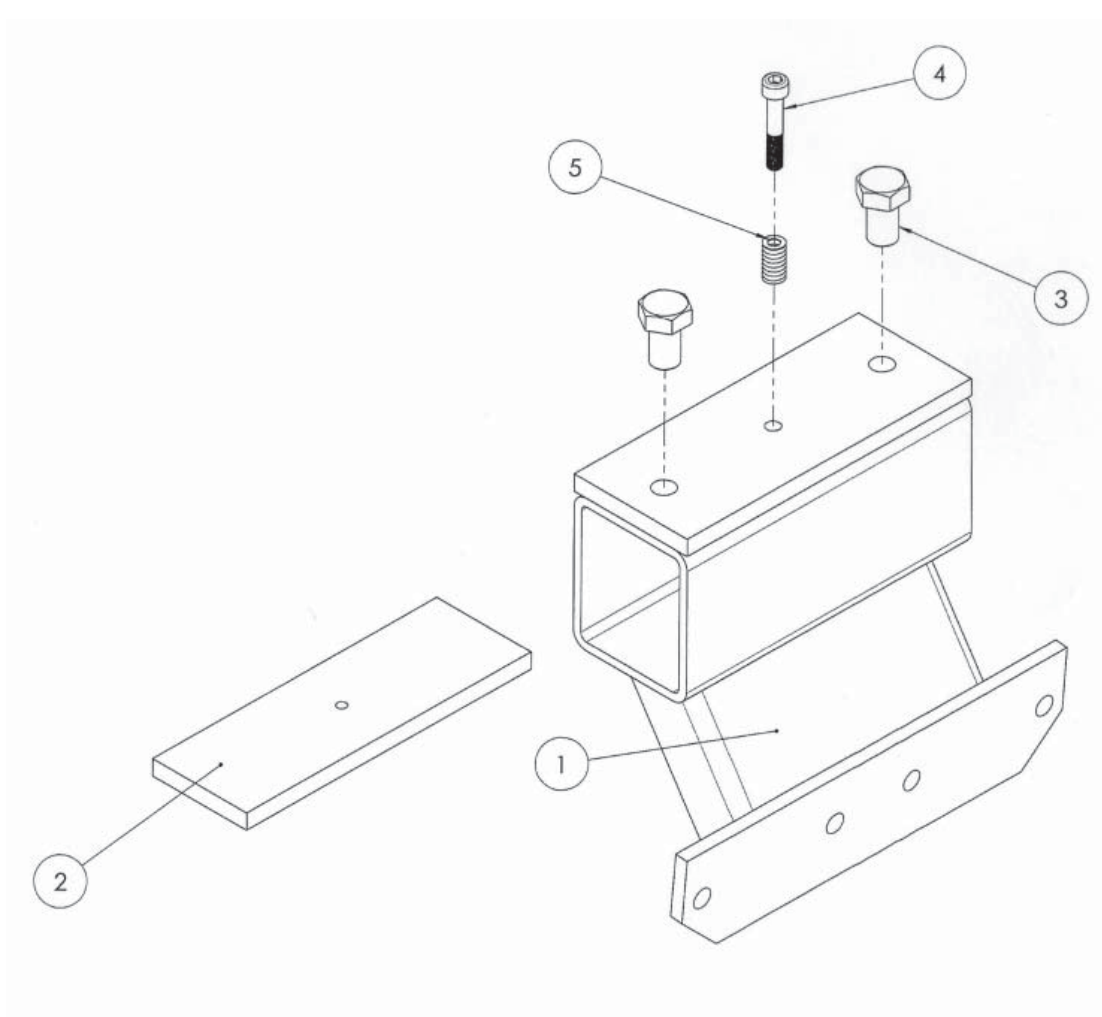


| Ref. | Qty. | Part No. | Description          | Assy. |
|------|------|----------|----------------------|-------|
| 1    | 1    | 01050034 | Lateral Support      |       |
| 2    | 2    | 05010007 | Screw TH M12 x 20 Zn |       |
| 3    | 1    | 05010942 | Screw CHC M6 x 35    |       |
| 4    | 1    | 05011954 | Compressing Spring   |       |
| 5    | 1    | 05029543 | Attachment Wedge     |       |

## 2 SPARE PARTS - FRAMES

### 2.8 TOP ELEMENT SUPPORT - CODE 0105 0179

PL 4128

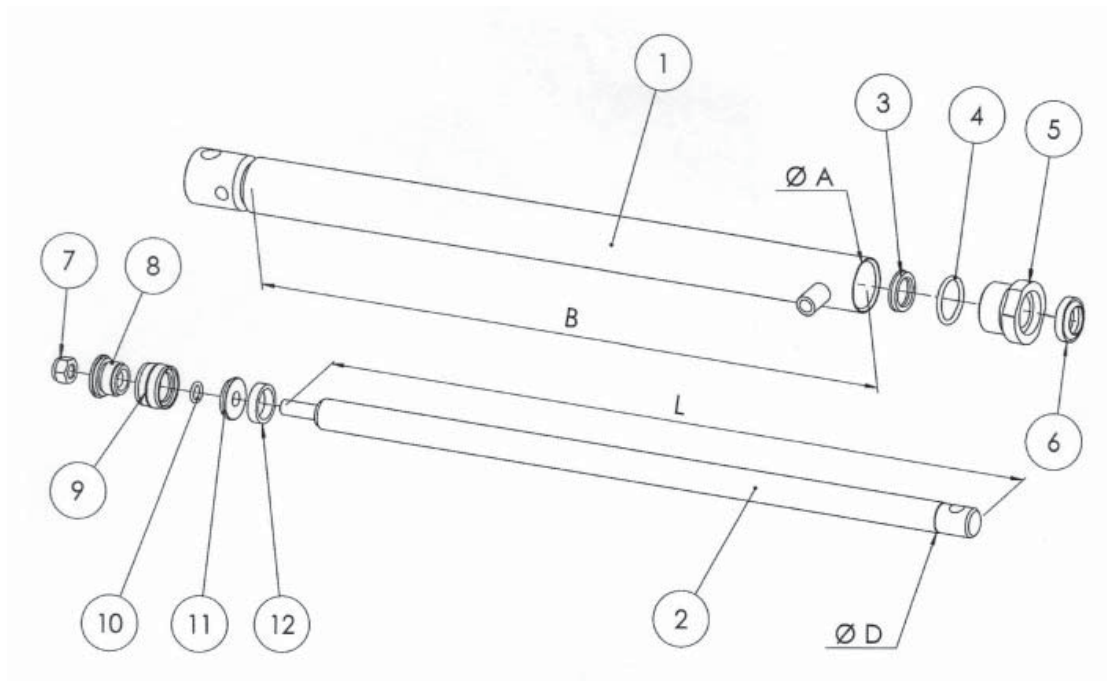


| Ref. | Qty. | Part No. | Description          | Assy. |
|------|------|----------|----------------------|-------|
| 1    | 1    | 01050119 | Top Support          |       |
| 2    | 1    | 05029543 | Attachment Wedge     |       |
| 3    | 2    | 05010007 | Screw TH M12 x 20 Zn |       |
| 4    | 1    | 05010942 | Screw CHC M6 x 35    |       |
| 5    | 1    | 05011954 | Compressing Spring   |       |

## 2 SPARE PARTS - FRAMES

### 2.9 CYLINDER DE 35 - 25

PL 1604



| <u>REF #</u> | <u>QTY.</u> | <u>PART NO.</u> | <u>DESCRIPTION</u>            |
|--------------|-------------|-----------------|-------------------------------|
| 1            | 1           | 05019189        | Body <i>(See Table Below)</i> |
| 2            | 1           | 05019463        | Rod <i>(See Table Below)</i>  |
| 3            | 1           | 05001307        | O-Ring                        |
| 4            | 1           | 05000042        | Rod Joint Ø25                 |
| 5            | 1           | 05019117        | Threaded Base                 |
| 6            | 1           | 05001004        | Top Rod Joint Ø25             |
| 7            | 1           | 05014300        | Brake Nut M12                 |
| 8            | 1           | 05019670        | Half Piston                   |
| 9            | 1           | 05000041        | Piston Joint                  |
| 10           | 1           | 05001301        | O-Ring R 10                   |
| 11           | 1           | 05019671        | Flask                         |
| 12           | 1           | 05005319        | Spacing Ring                  |

Dimensions in mm:

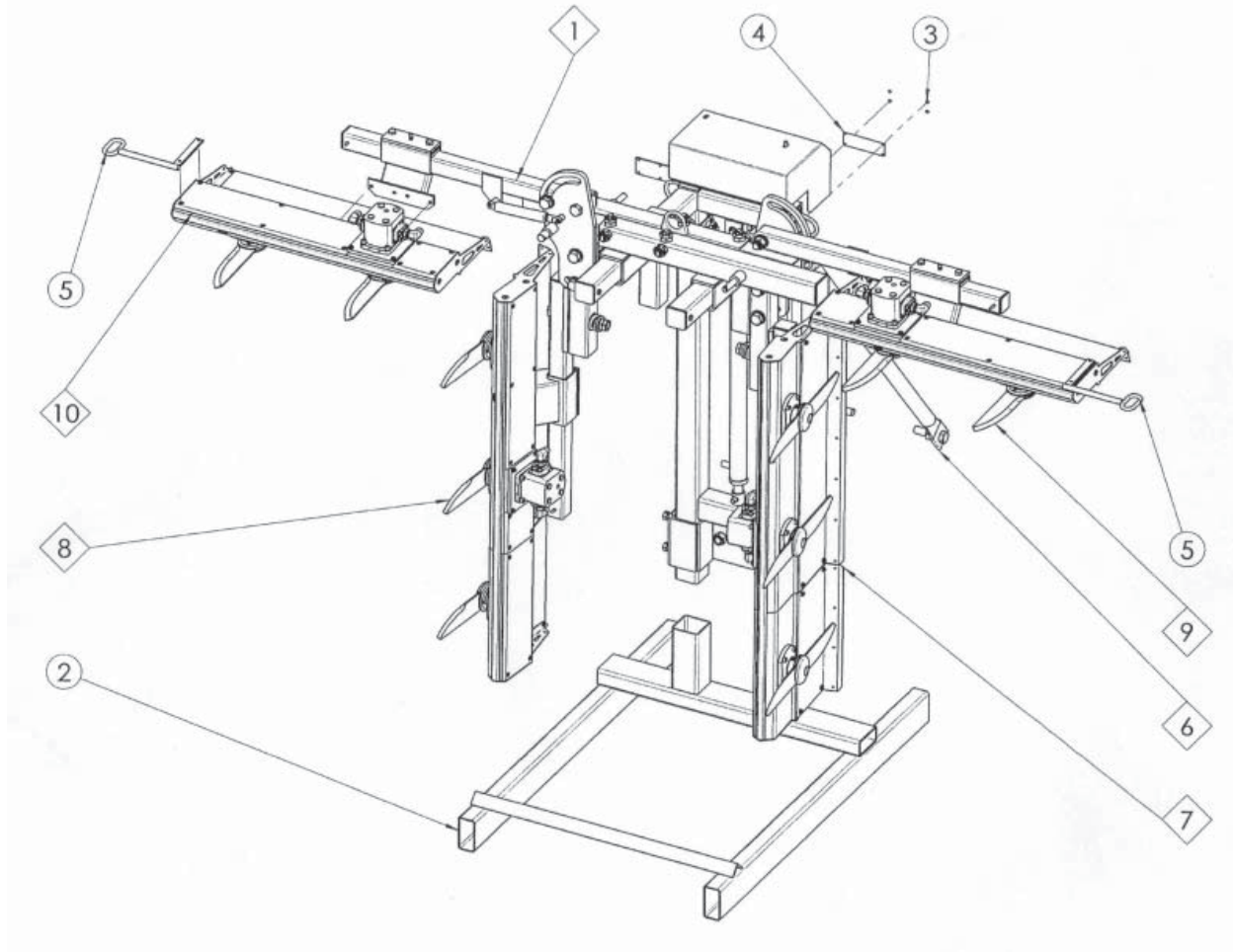
| Cylinder: | Rod:      | Body:     | ØA | B   | L   | ØD | Stroke: |
|-----------|-----------|-----------|----|-----|-----|----|---------|
| 0501 9247 | 0501 9248 | 0501 9249 | 45 | 874 | 945 | 25 | 800     |

- Set of Seals: 0501 9679

## 2 SPARE PARTS - FRAMES

### 2.10 SIMPLE NARROW FRAME

PL 4870

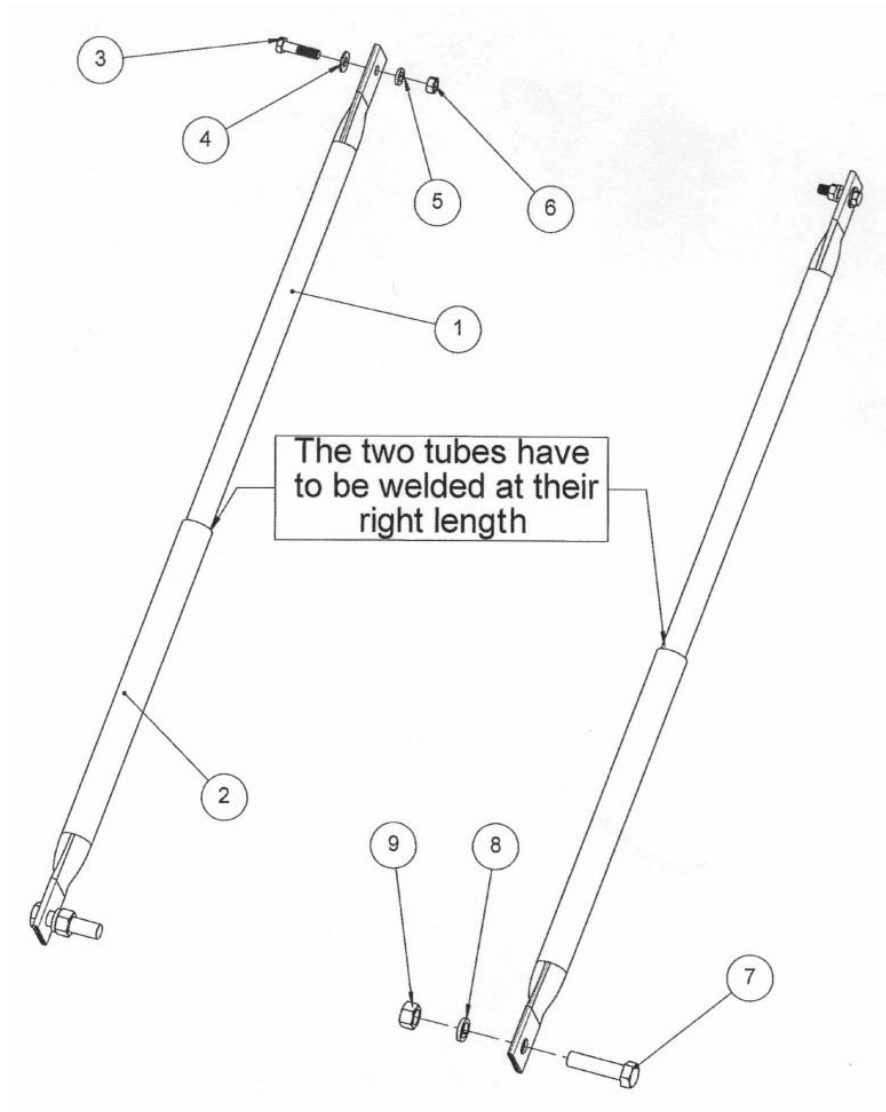


| <u>REF #</u> | <u>QTY.</u> | <u>PART NO.</u> | <u>DESCRIPTION</u>            | <u>ASSY.</u>    |
|--------------|-------------|-----------------|-------------------------------|-----------------|
| 1            | 1           | 01132412        | Complete Frame                | PL 4872 - Pg 2  |
| 2            | 1           | 00006230        | Storage Support               |                 |
| 3            | 4           | 05011650        | Rivet POP Ø4 x 8              |                 |
| 4            | 1           | 05016066        | Identity Plate                |                 |
| 5            | 2           | 01132410        | Hook                          |                 |
| 6            | 1           | 00040900        | Braces                        | PL 2261 - Pg 12 |
| 7            | 1           | 00001902        | 51" LH 3 Blade Cut. Element   | PL 3688 - Pg 15 |
| 8            | 1           | 00001901        | 51" RH 3 Blade Cut. Element   | PL 3686 - Pg 13 |
| 9            | 1           | 00001830        | 30.7" LH 2 Blade Cut. Element |                 |
| 10           | 1           | 00001801        | 30.7" RH 2 Blade Cut. Element |                 |

## 2 SPARE PARTS - FRAMES

### 2.11 BRACES

PL 2261

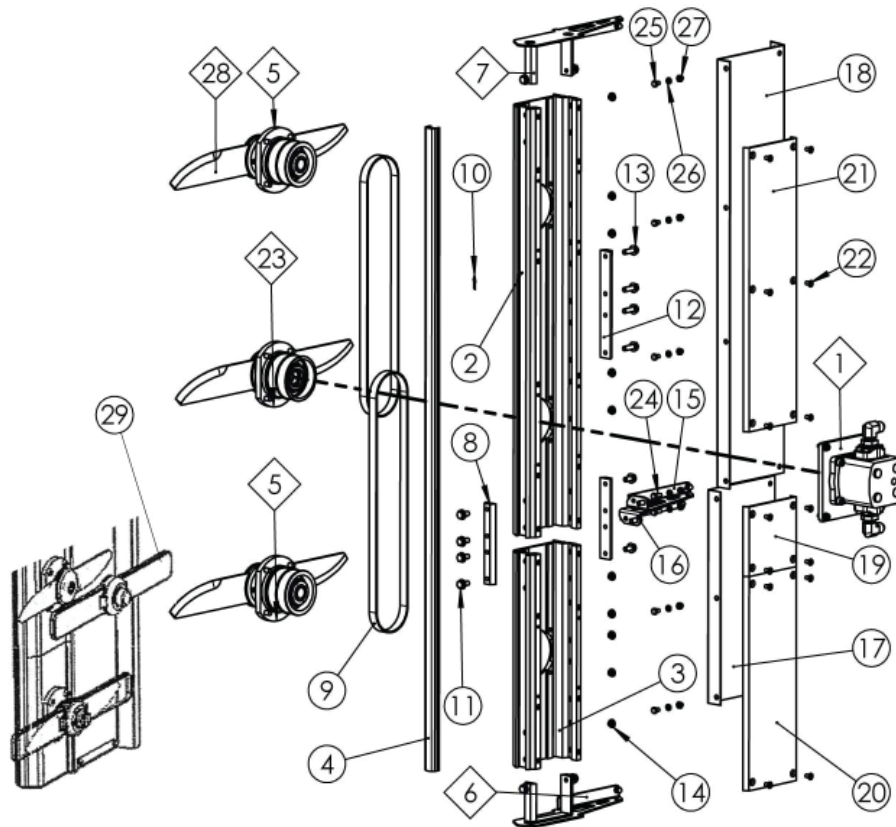


| <u>REF #</u> | <u>QTY.</u> | <u>PART NO.</u> | <u>DESCRIPTION</u> |
|--------------|-------------|-----------------|--------------------|
| 1            | 2           | 00040516        | Tube               |
| 2            | 2           | 00040515        | Tube               |
| 3            | 2           | 05010042        | Screw H M12 x 50   |
| 4            | 2           | 05015009        | Washer M12 Zn      |
| 5            | 2           | 05015316        | Washer W 12        |
| 6            | 2           | 05011203        | Nut Hu 12 Zn       |
| 7            | 2           | 05010014        | Screw TH M20 x 60  |
| 8            | 2           | 05015315        | Washer W 20        |
| 9            | 2           | 05011200        | Nut M20 Hu         |

### 3 CUTTING ELEMENTS

#### 3.1 51" CUTTING ELEMENT, 3 BLADE - CODE 0000 1901

PL 3686



Cutting Height - 51"  
10 cc Motor  
Position 2  
RH Rotation

| <u>REF #</u> | <u>QTY.</u> | <u>PART NO.</u> | <u>DESCRIPTION</u>           | <u>ASSY.</u>    |
|--------------|-------------|-----------------|------------------------------|-----------------|
| 1            | 1           | 0105 0131       | Motor 10 cc                  | PL 3539 - Pg 21 |
| 2            | 1           | 01050046        | Aluminum Section 800 mm      |                 |
| 3            | 1           | 01050048        | Aluminum Section 400 mm      |                 |
| 4            | 1           | 01221200        | Leading Edge 1200 mm         |                 |
| 5            | 2           | 01050130        | Blade Assy Long RH           | PL 3540 - Pg 22 |
| 6            | 1           | 01050018        | Complete Closing With Screws | PL 3542 - Pg 30 |
| 7            | 1           | 01050019        | Complete Closing With Screws | PL 3542 - Pg 30 |
| 8            | 2           | 01050077        | Junction L=150 mm            |                 |
| 9            | 2           | 05028597        | Belt S 250 17 x 1039 mm      |                 |
| 10           | 1           | 05016072        | Adhesive Sticker             |                 |
| 11           | 6           | 05011877        | Screw Tensilock M8 x 16      |                 |

### 3 CUTTING ELEMENTS

#### 3.1 51" CUTTING ELEMENT, 3 BLADE - CODE 0000 1901 (CONTINUED)

PL 3686

| <u>REF #</u> | <u>QTY.</u> | <u>PART NO.</u> | <u>DESCRIPTION</u>             | <u>ASSY.</u>    |
|--------------|-------------|-----------------|--------------------------------|-----------------|
| 12           | 1           | 00420016        | Junction L=200 mm              |                 |
| 13           | 4           | 05011876        | Screw Tensilok M8 x 25 Zn      |                 |
| 14           | 10          | 05017891        | Plastic Obturator              |                 |
| 15           | 1           | 01050008        | Case Reinforcement w/Screws LH |                 |
| 16           | 1           | 01050009        | Case Reinforcement w/Screws RH |                 |
| 17           | 1           | 01050097        | Blade Case 400 mm              |                 |
| 18           | 1           | 01050099        | Blade Case 800 mm              |                 |
| 19           | 1           | 01050090        | Cover 130 mm                   |                 |
| 20           | 1           | 01050093        | Cover 400 mm                   |                 |
| 21           | 1           | 01050094        | Cover 530 mm                   |                 |
| 22           | 14          | 05010537        | Screw FHC M6 x 12              |                 |
| 23           | 1           | 01050124        | Motor Blade Assy Short RH      | PL 3541 - Pg 23 |
| 24           | 2           | 05010152        | Screw TH M6 x 16               |                 |
| 25           | 5           | 05010020        | Screw TH M6 x 10               |                 |
| 26           | 7           | 05015318        | Washer W6                      |                 |
| 27           | 7           | 05011234        | Nut M6                         |                 |
| 28           | 3           | 05030169        | S. S. Blade 480 mm EL RH       |                 |

**SPECIAL NOTE: With every stainless steel blade ordered it is recommended that the following also be ordered:**

1 ea. 0503-0069      Mounting hardware for 1 blade consisting of:

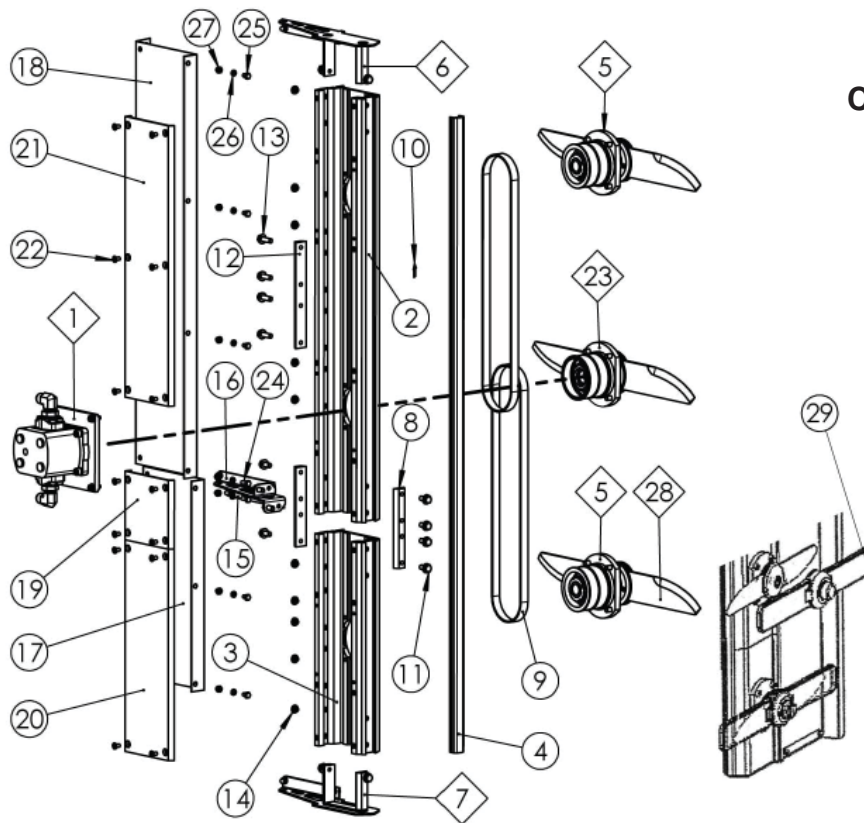
1 ea. 0501 4311      Locknut M10  
1 ea. 0501 7926      Plug  
2 ea. 0501 1861      Screw Tensilok M8 x 12



### 3 CUTTING ELEMENTS

#### 3.2 51" CUTTING ELEMENT, 3 BLADE - CODE 0000 1902

PL 3688



Cutting Height - 51"  
10 cc Motor  
Position 2  
LH Rotation

| <u>REF #</u> | <u>QTY.</u> | <u>PART NO.</u> | <u>DESCRIPTION</u>           | <u>ASSY.</u>    |
|--------------|-------------|-----------------|------------------------------|-----------------|
| 1            | 1           | 0105 0131       | Motor 10cc                   | PL 3539 - Pg 21 |
| 2            | 1           | 01050046        | Aluminum Section 800 mm      |                 |
| 3            | 1           | 01050048        | Aluminum Section 400 mm      |                 |
| 4            | 1           | 01221200        | Leading Edge 1200 mm         |                 |
| 5            | 2           | 01050129        | Blade Assy Long LH           | PL 3543 - Pg 26 |
| 6            | 1           | 01050018        | Complete Closing With Screws | PL 3542 - Pg 30 |
| 7            | 1           | 01050019        | Complete Closing With Screws | PL 3542 - Pg 30 |
| 8            | 2           | 01050077        | Junction L=150 mm            |                 |
| 9            | 2           | 05028597        | Belt S 250 17 x 1039 mm      |                 |
| 10           | 1           | 05016072        | Adhesive Sticker             |                 |
| 11           | 6           | 05011877        | Screw Tensilock M8 x 16      |                 |

### 3 CUTTING ELEMENTS

#### 3.2 51" CUTTING ELEMENT, 3 BLADE - CODE 0000 1902 (CONTINUED)

PL 3688

| <u>REF #</u> | <u>QTY.</u> | <u>PART NO.</u> | <u>DESCRIPTION</u>             | <u>ASSY.</u>    |
|--------------|-------------|-----------------|--------------------------------|-----------------|
| 12           | 1           | 00420016        | Junction L=200 mm              |                 |
| 13           | 4           | 05011876        | Screw Tensilok M8 x 25 Zn      |                 |
| 14           | 10          | 05017891        | Plastic Obturator              |                 |
| 15           | 1           | 01050008        | Case Reinforcement w/Screws LH |                 |
| 16           | 1           | 01050009        | Case Reinforcement w/Screws RH |                 |
| 17           | 1           | 01050097        | Blade Case 400 mm              |                 |
| 18           | 1           | 01050099        | Blade Case 800 mm              |                 |
| 19           | 1           | 01050090        | Cover 130 mm                   |                 |
| 20           | 1           | 01050093        | Cover 400 mm                   |                 |
| 21           | 1           | 01050094        | Cover 530 mm                   |                 |
| 22           | 14          | 05010537        | Screw FHC M6 x 12              |                 |
| 23           | 1           | 01050123        | Motor Blade Assy Short LH      | PL 3555 - Pg 27 |
| 24           | 2           | 05010152        | Screw TH M6 x 16               |                 |
| 25           | 5           | 05010020        | Screw TH M6 x 10               |                 |
| 26           | 7           | 05015318        | Washer W6                      |                 |
| 27           | 7           | 05011234        | Nut M6                         |                 |
| 28           | 3           | 05030170        | S. S. Blade 480 mm EL LH       |                 |

**SPECIAL NOTE:** With every stainless steel blade ordered it is recommended that the following also be ordered:

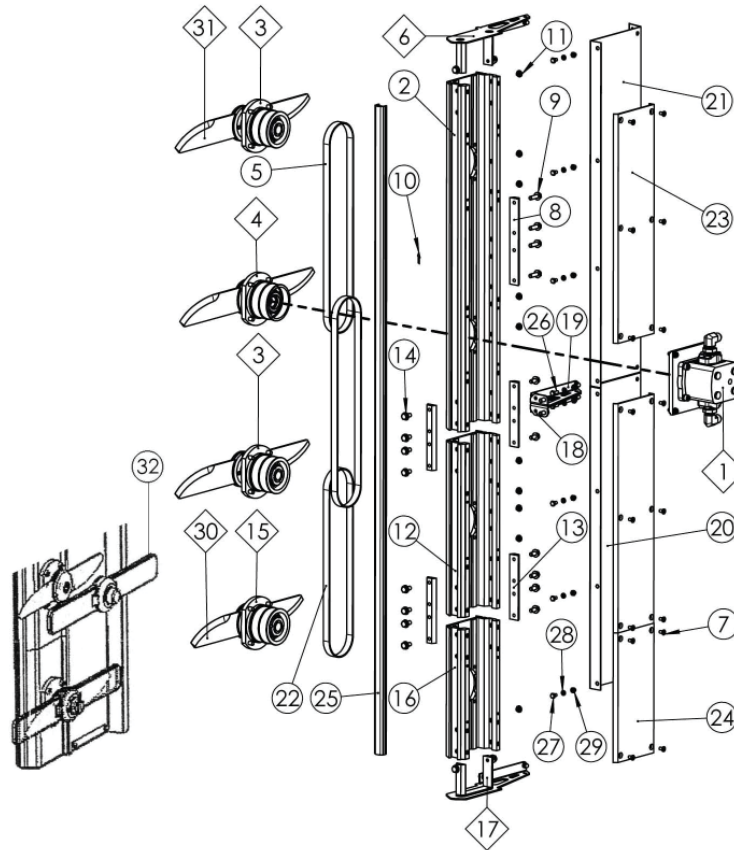
1 ea. 0503-0069      Mounting hardware for 1 blade consisting of:

1 ea. 0501 4311      Locknut M10  
1 ea. 0501 7926      Plug  
2 ea. 0501 1861      Screw Tensilok M8 x 12

### 3 CUTTING ELEMENTS

#### 3.3 63" CUTTING ELEMENT, 4 BLADE - CODE 0000 1827

PL 3548



**Cutting Height - 63"**  
**10 cc Motor**  
**Position 2**  
**RH Rotation**

| <u>REF #</u> | <u>QTY.</u> | <u>PART NO.</u> | <u>DESCRIPTION</u>           | <u>ASSY.</u>    |
|--------------|-------------|-----------------|------------------------------|-----------------|
| 1            | 1           | 0105 0131       | Motor 10cc                   | PL 3539 - Pg 21 |
| 2            | 1           | 01050046        | Aluminum Section 800 mm      |                 |
| 3            | 2           | 01050130        | Blade Assy Long RH           | PL 3540 - Pg 22 |
| 4            | 1           | 01050124        | Motor Blade Assy Short RH    | PL 3541 - Pg 23 |
| 5            | 2           | 05028597        | Belt S 250 17 x 1039 mm      |                 |
| 6            | 1           | 01050019        | Complete Closing With Screws | PL 3542 - Pg 30 |
| 7            | 16          | 05010537        | Screw FHC M6 x 12            |                 |
| 8            | 1           | 00420016        | Junction L=200mm             |                 |
| 9            | 4           | 05011876        | Screw Tensilok M8 x 25 Zn    |                 |
| 10           | 1           | 05016072        | Adhesive Sticker             |                 |

### 3 CUTTING ELEMENTS

#### 3.3 63" CUTTING ELEMENT, 4 BLADE - CODE 0000 1827 (CONTINUED)

PL 3548

| <u>REF #</u> | <u>QTY.</u> | <u>PART NO.</u> | <u>DESCRIPTION</u>                | <u>ASSY.</u>    |
|--------------|-------------|-----------------|-----------------------------------|-----------------|
| 11           | 10          | 05017891        | Plastic Obturator                 |                 |
| 12           | 1           | 01050048        | Aluminum Section 400mm            |                 |
| 13           | 4           | 01050077        | Junction L=150mm                  |                 |
| 14           | 14          | 05011877        | Screw Tensilok M8 x 16            |                 |
| 15           | 1           | 01050128        | Blade Assy Short RH               | PL 3540 - Pg 22 |
| 16           | 1           | 01050047        | Aluminum Section 300mm            |                 |
| 17           | 1           | 01050018        | Complete Closing With Screws      | PL 3542 - Pg 30 |
| 18           | 1           | 01050009        | Case Reinforcement With Screws RH |                 |
| 19           | 1           | 01050008        | Case Reinforcement With Screws LH |                 |
| 20           | 1           | 01050098        | Blade Case 700mm                  |                 |
| 21           | 1           | 01050099        | Blade Case 800mm                  |                 |
| 22           | 1           | 05028688        | Belt S 250 17 x 942mm             |                 |
| 23           | 2           | 01050094        | Cover 530mm                       |                 |
| 24           | 1           | 01050092        | Cover 300mm                       |                 |
| 25           | 1           | 01221500        | Leading Edge 1500mm               |                 |
| 26           | 2           | 05010152        | Screw TH M6 x 16                  |                 |
| 27           | 6           | 05010020        | Screw TH M6 x 10                  |                 |
| 28           | 8           | 05015318        | Washer W 6                        |                 |
| 29           | 8           | 05011234        | Nut M6                            |                 |
| 30           | 1           | 05030171        | S.S. Blade 400mm EL RH            |                 |
| 31           | 3           | 05030169        | S.S. Blade 480mm EL RH            |                 |

**SPECIAL NOTE:** With every stainless steel blade ordered it is recommended that the following also be ordered:

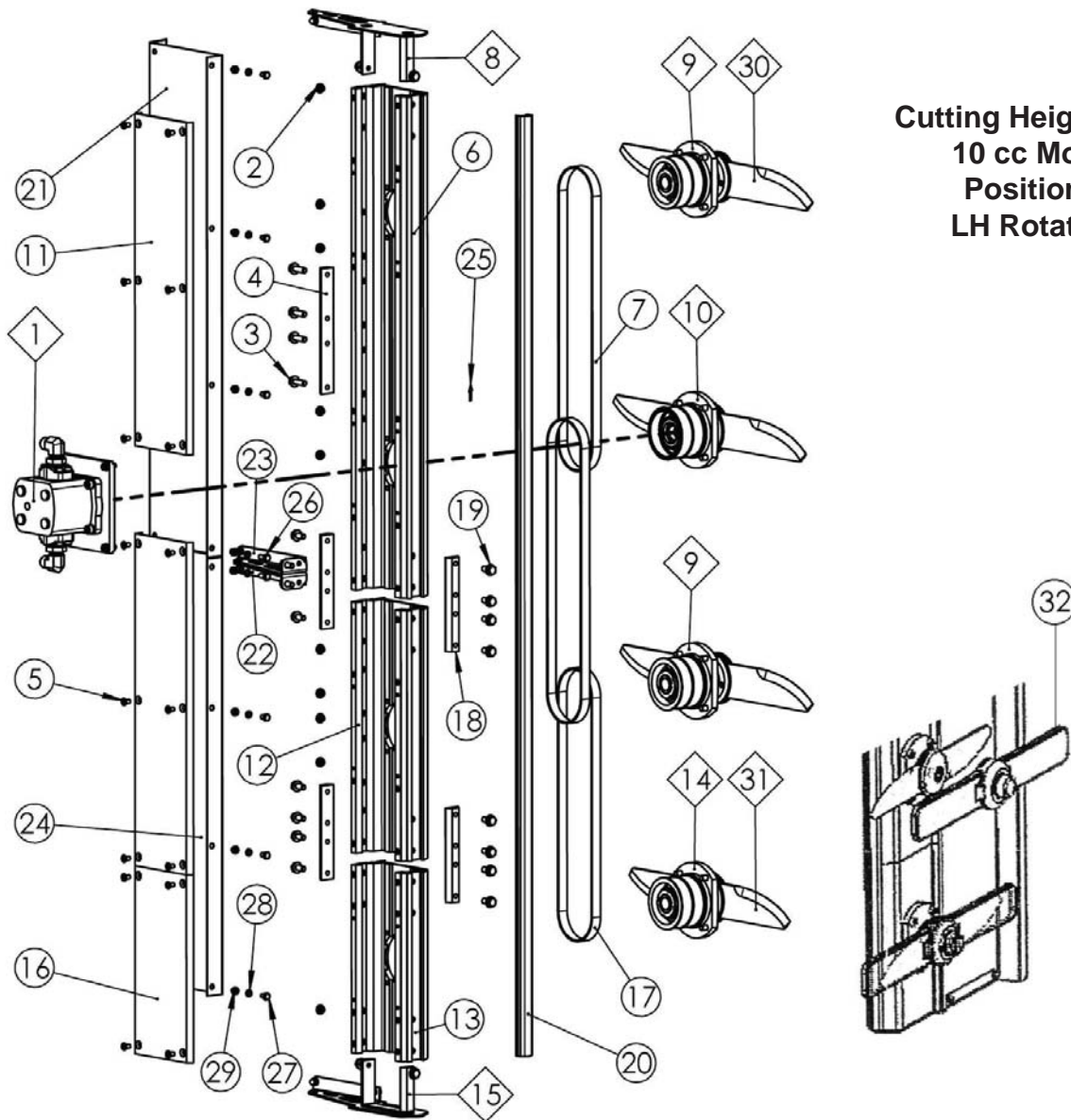
1 ea. 0503-0069      Mounting hardware for 1 blade consisting of:

1 ea. 0501 4311      Locknut M10  
 1 ea. 0501 7926      Plug  
 2 ea. 0501 1861      Screw Tensilok M8 x 12

### 3 CUTTING ELEMENTS

#### 3.4 63" CUTTING ELEMENT, 4 BLADE - CODE 0000 1902

PL 3550



Cutting Height - 63"  
10 cc Motor  
Position 2  
LH Rotation

| REF # | QTY. | PART NO.  | DESCRIPTION                 | ASSY.           |
|-------|------|-----------|-----------------------------|-----------------|
| 1     | 1    | 0105 0131 | Motor 10cc                  | PL 3539 - Pg 21 |
| 2     | 10   | 05017891  | Plastic Obturator           |                 |
| 3     | 4    | 05011876  | Screw Tensilok M8 x 25 Zn   |                 |
| 4     | 1    | 00420016  | Junction L=200mm            |                 |
| 5     | 16   | 05010537  | Screw FHC M6 x 12           |                 |
| 6     | 1    | 01050046  | Aluminum Section 800mm      |                 |
| 7     | 2    | 05028597  | Belt S 250 17 x 1039mm      |                 |
| 8     | 1    | 01050018  | Complte Closing With Screws | PL 3542 - Pg 30 |
| 9     | 2    | 01050129  | Blade Assy Long LH          | PL 3543 - Pg 26 |
| 10    | 1    | 01050123  | Motor Blade Assy Short LH   | PL 3555 - Pg 27 |

### 3 CUTTING ELEMENTS

#### 3.4 63" CUTTING ELEMENT, 4 BLADE - CODE 0000 1902 (CONTINUED)

PL 3550

| <u>REF #</u> | <u>QTY.</u> | <u>PART NO.</u> | <u>DESCRIPTION</u>                | <u>ASSY.</u>    |
|--------------|-------------|-----------------|-----------------------------------|-----------------|
| 11           | 2           | 01050094        | Cover 530mm                       |                 |
| 12           | 1           | 01050048        | Aluminum Section 400mm            |                 |
| 13           | 1           | 01050047        | Aluminum Section 300mm            |                 |
| 14           | 1           | 01050127        | Blade Assy Short LH               | PL 3543 - Pg 26 |
| 15           | 1           | 01050019        | Complete Closing With Screws      | PL 3542 - Pg 30 |
| 16           | 1           | 01050092        | Cover 300mm                       |                 |
| 17           | 1           | 05028688        | Belt S 250 17 x 942mm             |                 |
| 18           | 4           | 01050077        | Junction L=150mm                  |                 |
| 19           | 14          | 05011877        | Screw Tensilok M8 x 16            |                 |
| 20           | 1           | 01221500        | Leading Edge 1500mm               |                 |
| 21           | 1           | 01050099        | Blade Case 800mm                  |                 |
| 22           | 1           | 01050008        | Case Reinforcement With Screws LH |                 |
| 23           | 1           | 01050009        | Case Reinforcement With Screws RH |                 |
| 24           | 1           | 01050098        | Blade Case 700mm                  |                 |
| 25           | 1           | 05016072        | Adhesive Sticker                  |                 |
| 26           | 2           | 05010152        | Screw TH M6 x 16                  |                 |
| 27           | 6           | 05010020        | Screw TH M6 x 10                  |                 |
| 28           | 8           | 05015318        | Washer W 6                        |                 |
| 29           | 8           | 05011234        | Nut M6                            |                 |
| 30           | 3           | 05030170        | S.S. Blade 480mm EL LH            |                 |
| 31           | 1           | 05030172        | S.S. Blade 400mm EL LH            |                 |
| 32           | 4           | 0503 0600       | Plastic Blade Guard               |                 |

**SPECIAL NOTE: With every stainless steel blade ordered it is recommended that the following also be ordered:**

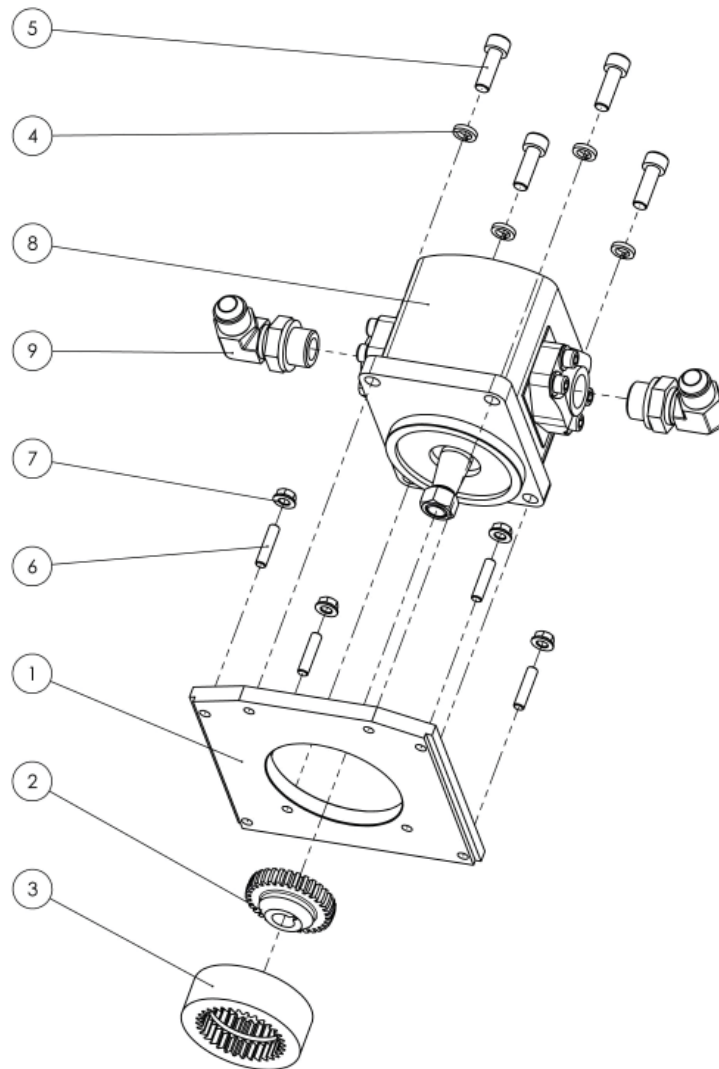
1 ea. 0503-0069      Mounting hardware for 1 blade consisting of:

1 ea. 0501 4311      Locknut M10  
 1 ea. 0501 7926      Plug  
 2 ea. 0501 1861      Screw Tensilok M8 x 12

### 3 CUTTING ELEMENTS

#### 3.5 HYDRAULIC MOTOR 10CC - CODE 0105 0131

PL 3539

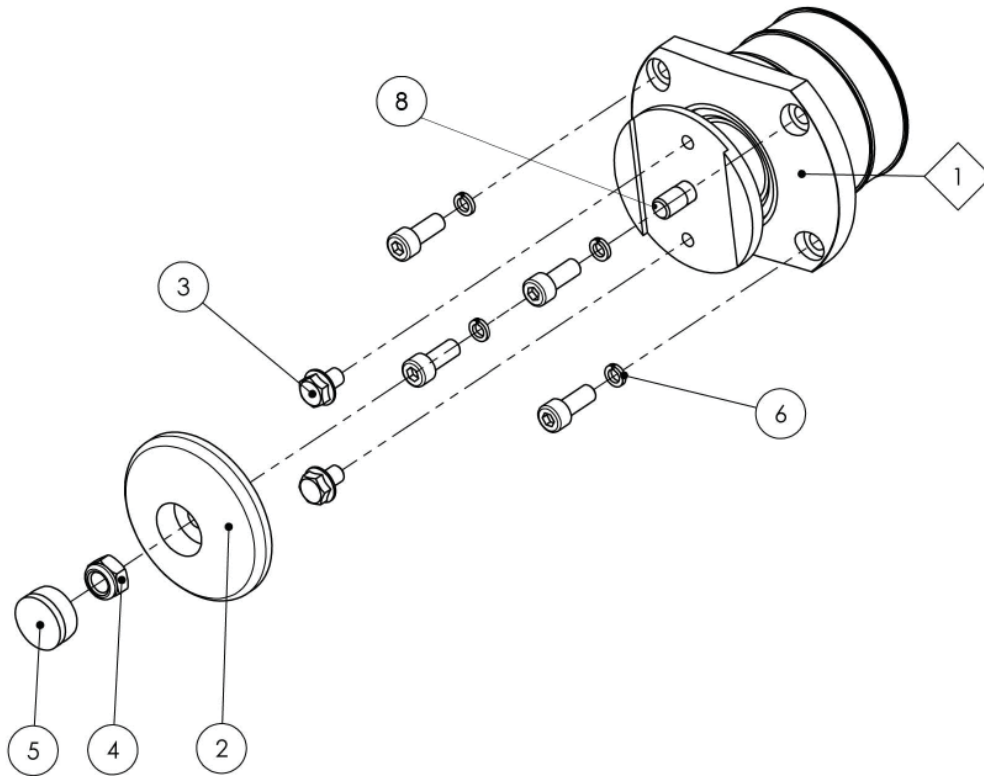


| <u>REF #</u> | <u>QTY.</u> | <u>PART NO.</u> | <u>DESCRIPTION</u>                          |
|--------------|-------------|-----------------|---|
| 1            | 1           | 01050039        | Motor Plate                                 |
| 2            | 1           | 01050021        | Pinion With Cone                            |
| 3            | 1           | 01050024        | Coupling                                    |
| 4            | 4           | 05015317        | Washer W8                                   |
| 5            | 4           | 05010903        | Screw CHC M8 x 25                           |
| 6            | 4           | 05011659        | Gudgeon M6 x 25                             |
| 7            | 4           | 05011215        | Nut Tensilok M6 Zn                          |
| 8            | 1           | 05021058        | Hydraulic Motor 10cc                        |
| 9            | 2           | 05006578        | Angle MJ 3/4 - MG 1/2 Cyl. With Counter Nut |

### 3 CUTTING ELEMENTS

#### 3.6 BLADE ASSEMBLY LONG RH - CODE 0105 0130

PL 3540



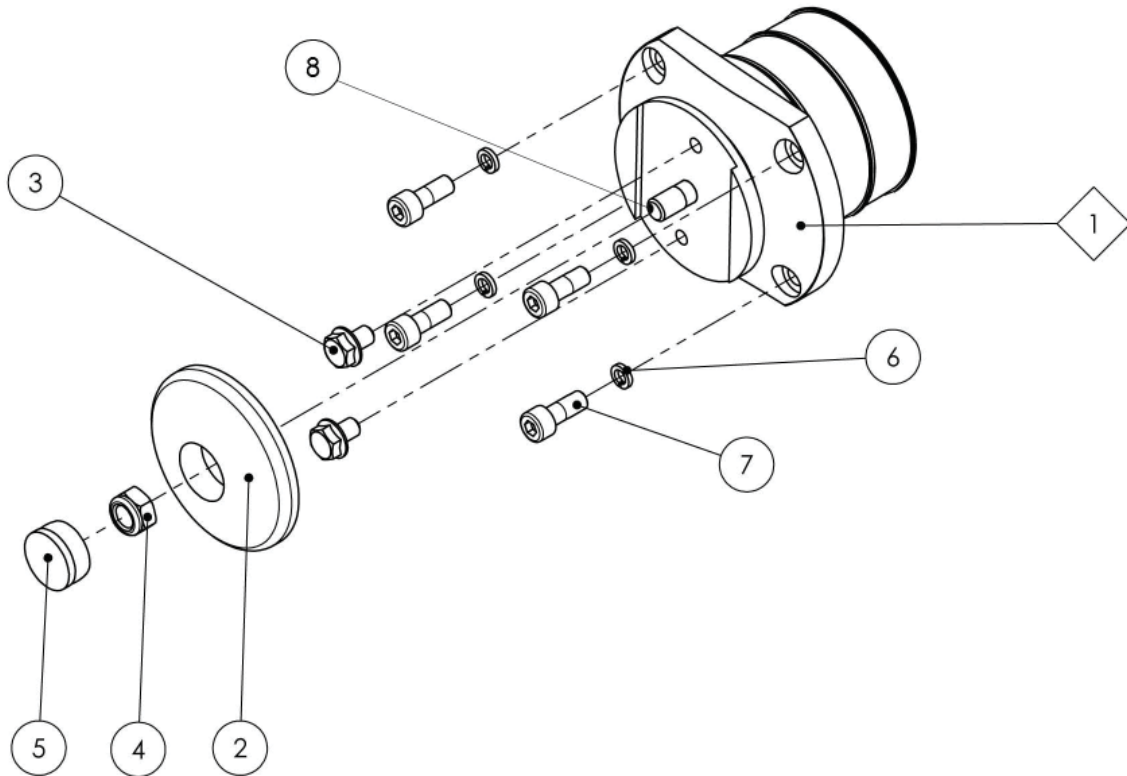
| <b>REF #</b> | <b>QTY.</b> | <b>PART NO.</b> | <b>DESCRIPTION</b>        | <b>ASSY.</b>    |
|--------------|-------------|-----------------|---------------------------|-----------------|
| 1            | 1           | 01050072        | Blade Hsg. Assy. Long RH  | PL 3556 - Pg 24 |
| 2            | 1           | 01050031        | Cup                       |                 |
| 3            | 2           | 05011861        | Screw Tensilok M8 x 12 Zn |                 |
| 4            | 1           | 05014311        | Locknut M10               |                 |
| 5            | 1           | 05017926        | Cap Ø26 mm                |                 |
| 6            | 4           | 05015318        | Washer W6                 |                 |
| 7            | 4           | 05010905        | Screw CHC M8 x 20         |                 |



### 3 CUTTING ELEMENTS

#### 3.7 MOTOR BLADE ASSY SHORT RH - CODE 0105 0124

PL 3541

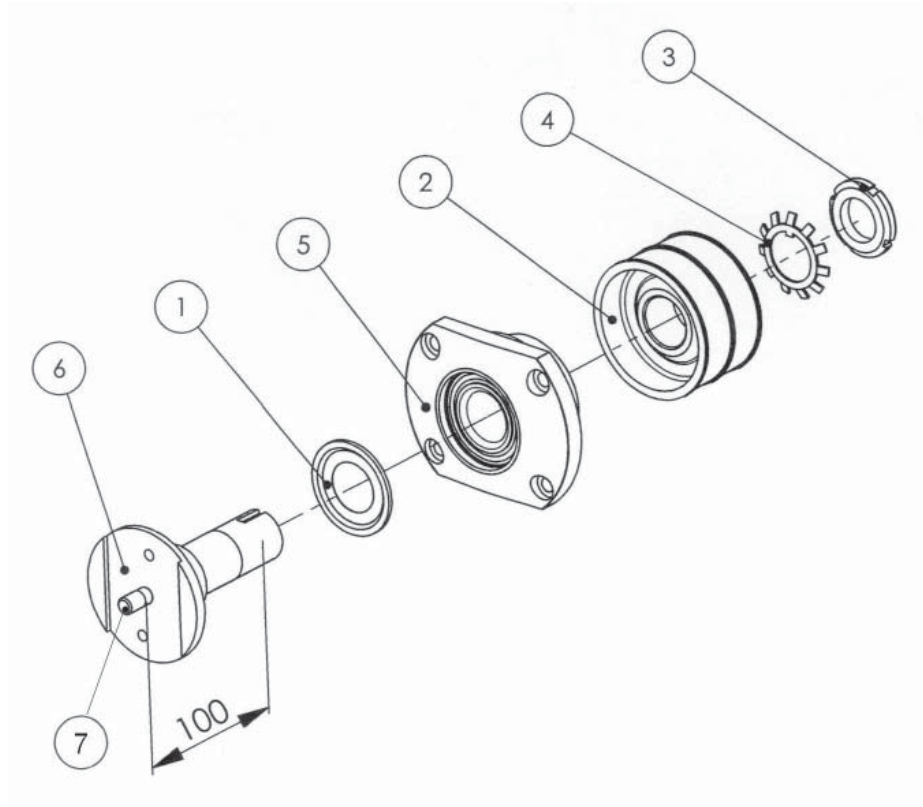


| <u>REF #</u> | <u>QTY.</u> | <u>PART NO.</u> | <u>DESCRIPTION</u>              | <u>ASSY.</u>    |
|--------------|-------------|-----------------|---------------------------------|-----------------|
| 1            | 1           | 01050066        | Motor Blade Hsg. Assy. Short RH | PL 3557 - Pg 25 |
| 2            | 1           | 01050031        | Cup                             |                 |
| 3            | 2           | 05011861        | Screw Tensilok M8 x 12 Zn       |                 |
| 4            | 1           | 05014311        | Locknut M10                     |                 |
| 5            | 1           | 05017926        | Cap Ø26 mm                      |                 |
| 6            | 4           | 05015318        | Washer W6                       |                 |
| 7            | 4           | 05010902        | Screw CHC M8 x 20               |                 |

### 3 CUTTING ELEMENTS

#### 3.8 BLADE HSG. ASSY. LONG RH - CODE 0105 0072

PL 3556

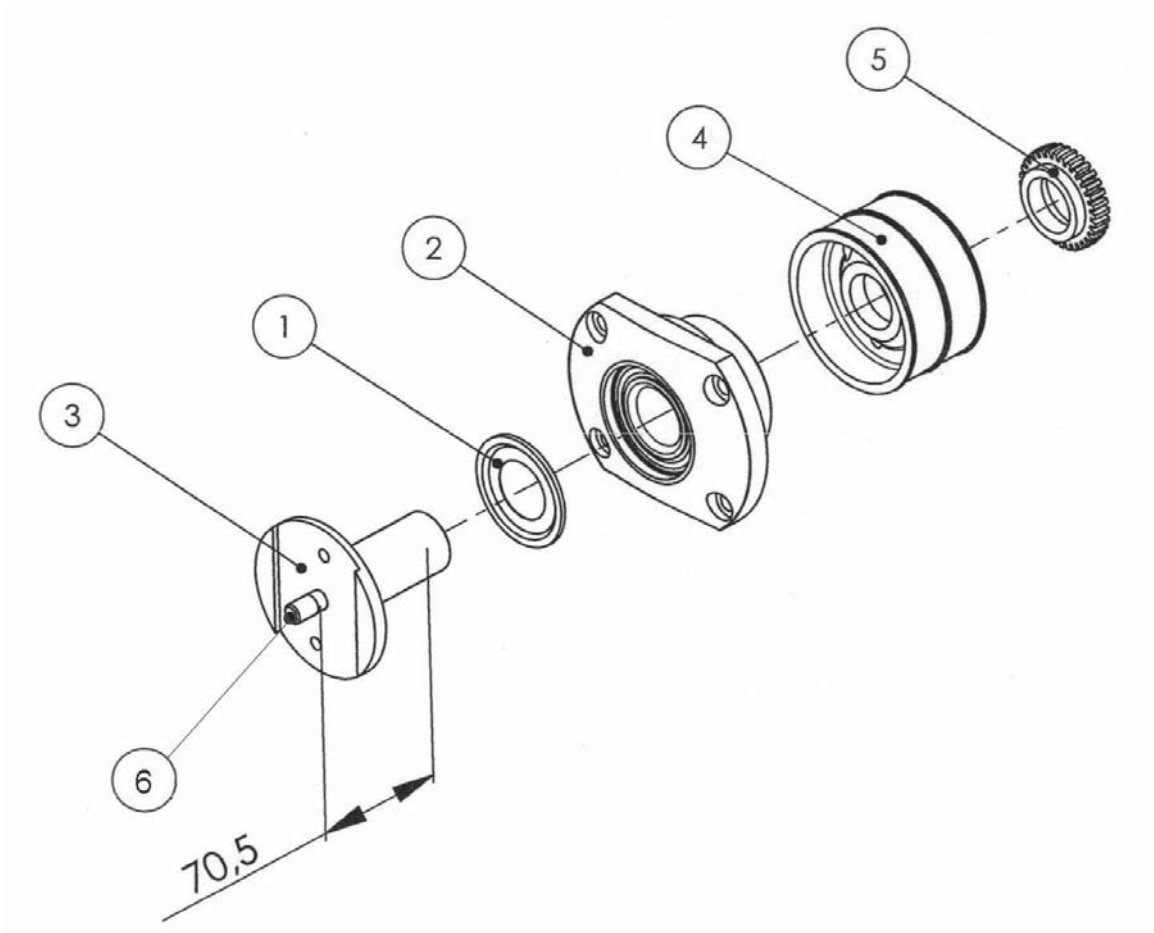


| <u>REF #</u> | <u>QTY.</u> | <u>PART NO.</u> | <u>DESCRIPTION</u>  | <u>ASSY.</u> |
|--------------|-------------|-----------------|---------------------|--------------|
| 1            | 1           | 05000038        | Ring NILOS          |              |
| 2            | 1           | 01050025        | Pulley              |              |
| 3            | 1           | 05005206        | Nut KM6             |              |
| 4            | 1           | 05005256        | Washer MB6          |              |
| 5            | 1           | 01050064        | Blade Housing       |              |
| 6            | 1           | 01050062        | Long Shaft Blade RH |              |

### 3 CUTTING ELEMENTS

#### 3.9 MOTOR BLADE HSG. ASSY SHORT RH - CODE 0105 0068

PL 3557

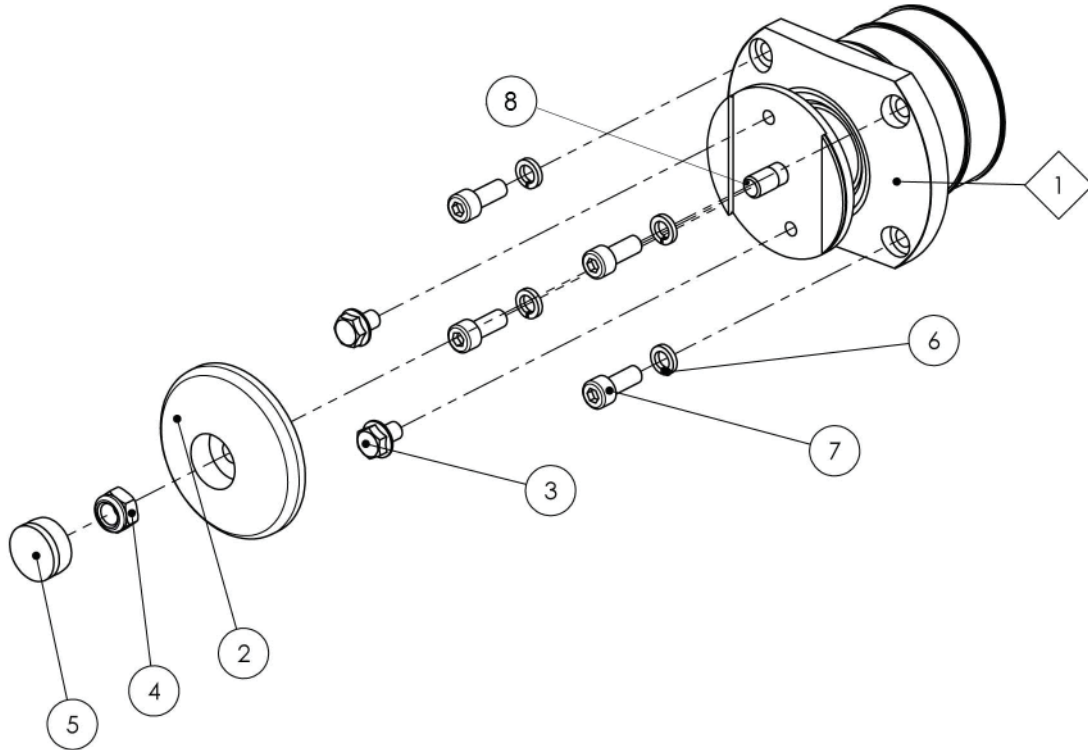


| <u>REF #</u> | <u>QTY.</u> | <u>PART NO.</u> | <u>DESCRIPTION</u>          | <u>ASSY.</u> |
|--------------|-------------|-----------------|-----------------------------|--------------|
| 1            | 1           | 05000038        | Ring NILOS                  |              |
| 2            | 1           | 01050064        | Blade Housing               |              |
| 3            | 1           | 01050056        | Short Shaft Motor, Blade RH |              |
| 4            | 1           | 01050023        | Motor Pulley                |              |
| 5            | 1           | 01050022        | Threaded Nut On Right       |              |

### 3 CUTTING ELEMENTS

#### 3.10 BLADE ASSEMBLY LONG LH - CODE 0105 0129

PL 3543

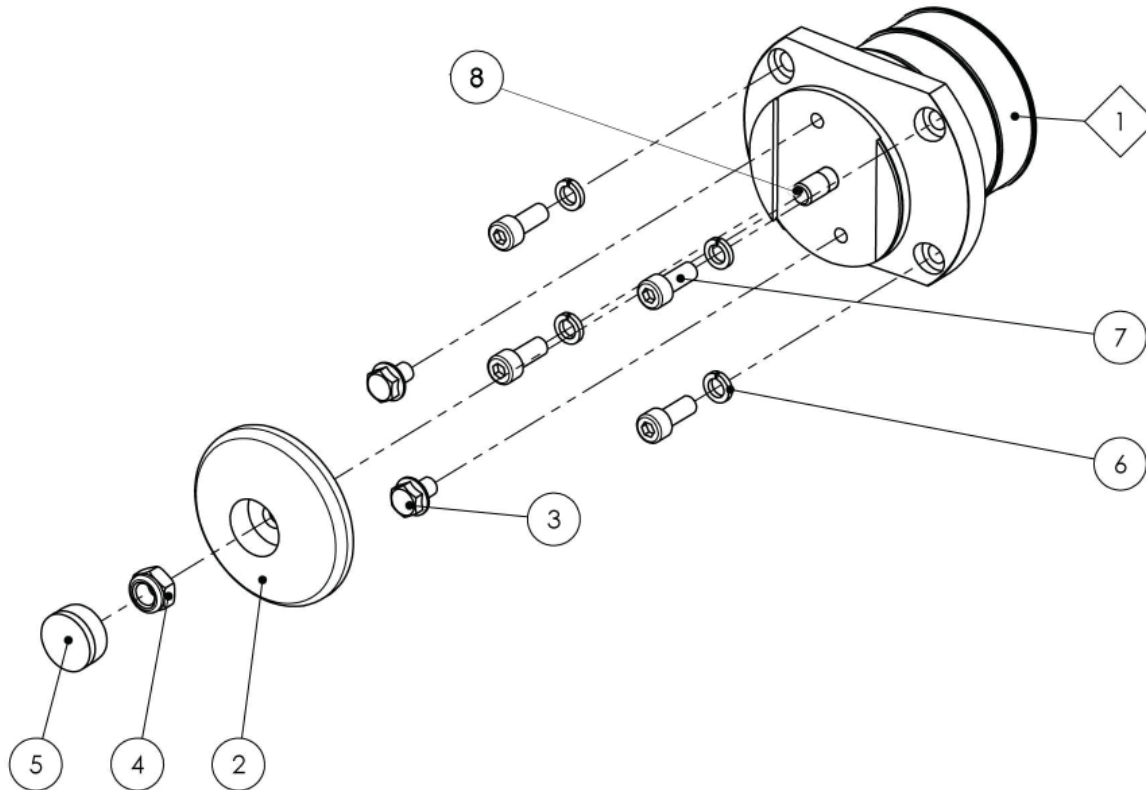


| <u>REF #</u> | <u>QTY.</u> | <u>PART NO.</u> | <u>DESCRIPTION</u>        | <u>ASSY.</u>    |
|--------------|-------------|-----------------|---------------------------|-----------------|
| 1            | 1           | 01050071        | Blade Hsg. Assy. Long LH  | PL 3558 - Pg 28 |
| 2            | 1           | 01050031        | Cup                       |                 |
| 3            | 2           | 05011861        | Screw Tensilok M8 x 12 Zn |                 |
| 4            | 1           | 05014311        | Locknut M10               |                 |
| 5            | 1           | 05017926        | Cap Ø26 mm                |                 |
| 6            | 4           | 05015317        | Washer W8                 |                 |
| 7            | 4           | 05010902        | Screw CHC M8 x 20         |                 |

### 3 CUTTING ELEMENTS

#### 3.11 MOTOR BLADE ASSY SHORT LH - CODE 0105 0123

PL 3555

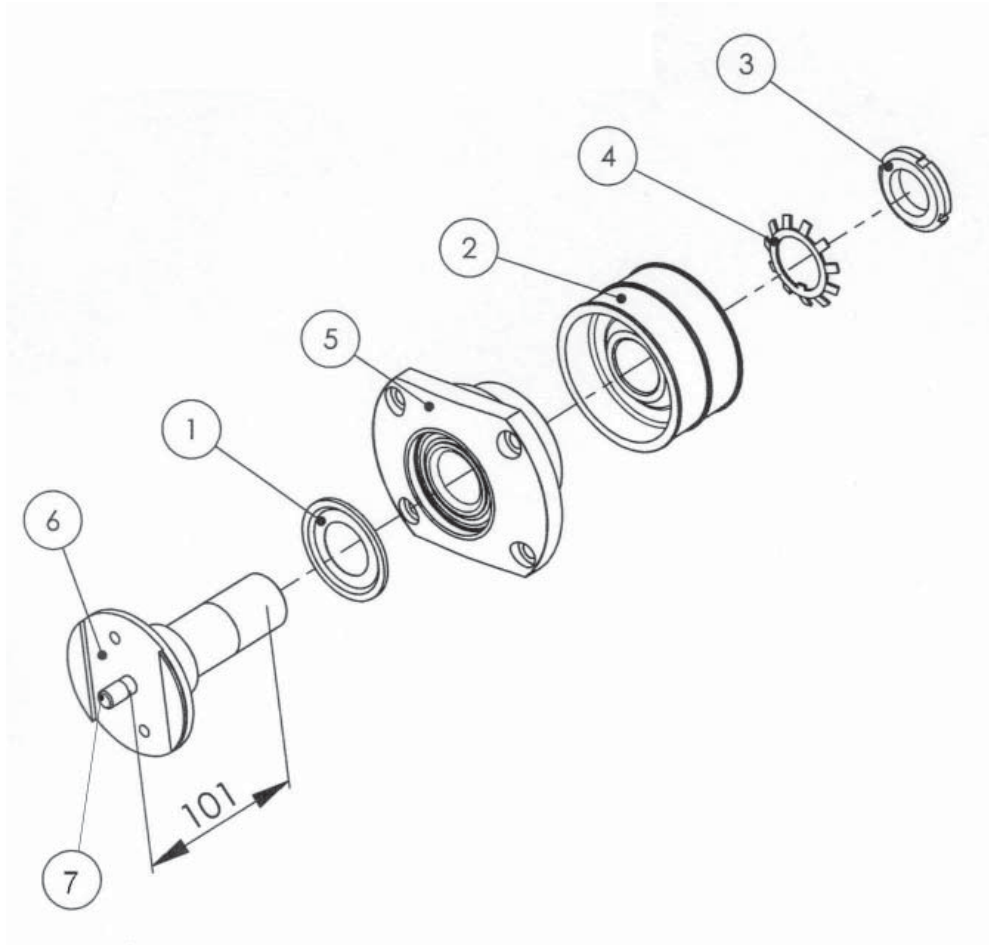


| <u>REF #</u> | <u>QTY.</u> | <u>PART NO.</u> | <u>DESCRIPTION</u>              | <u>ASSY.</u>    |
|--------------|-------------|-----------------|---------------------------------|-----------------|
| 1            | 1           | 01050065        | Motor Blade Hsg. Assy. Short LH | PL 3559 - Pg 29 |
| 2            | 1           | 01050031        | Cup                             |                 |
| 3            | 2           | 05011861        | Screw Tensilok M8 x 12 Zn       |                 |
| 4            | 1           | 05014311        | Locknut M10                     |                 |
| 5            | 1           | 05017926        | Cap Ø26 mm                      |                 |
| 6            | 4           | 05015317        | Washer W8                       |                 |
| 7            | 4           | 05010902        | Screw CHC M8 x 20               |                 |

### 3 CUTTING ELEMENTS

#### 3.12 BLADE HSG. ASSY. LONG LH - CODE 0105 0071

PL 3558

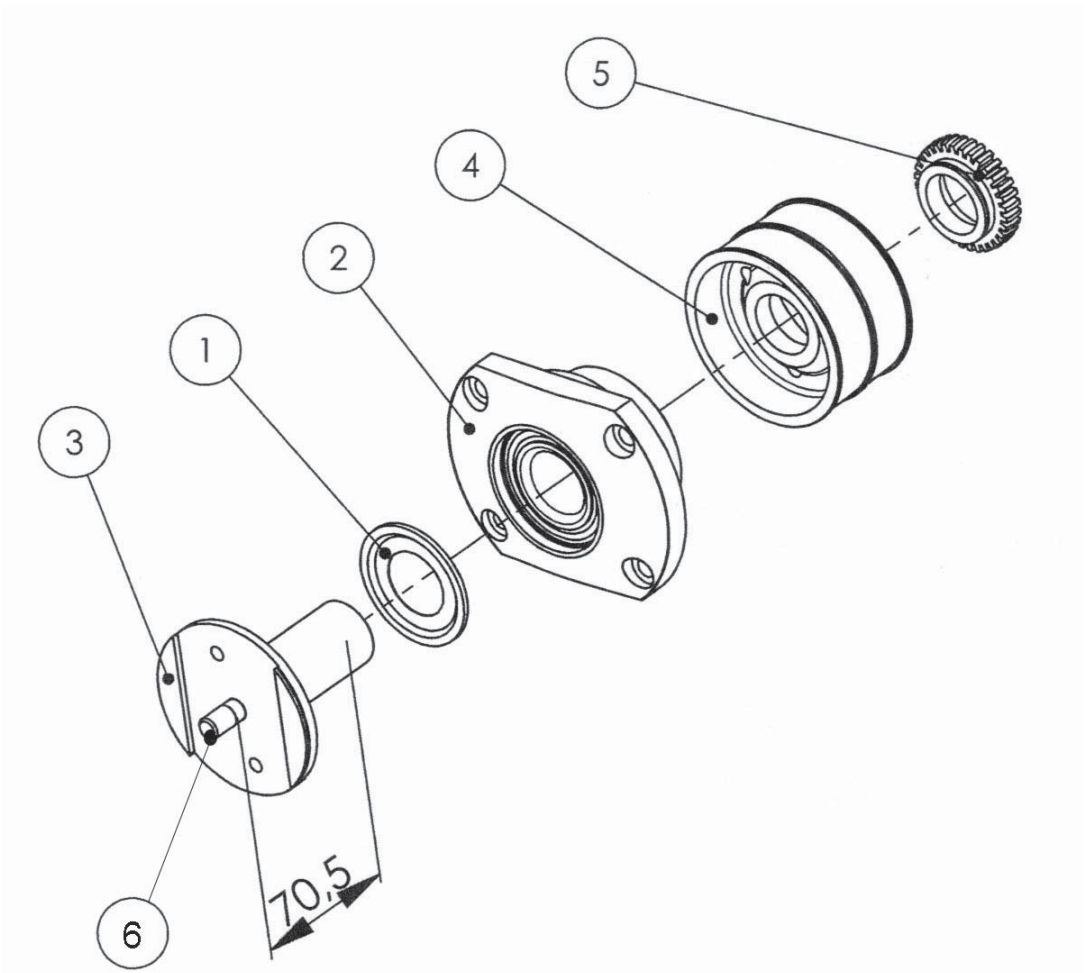


| <u>REF #</u> | <u>QTY.</u> | <u>PART NO.</u> | <u>DESCRIPTION</u>  | <u>ASSY.</u> |
|--------------|-------------|-----------------|---------------------|--------------|
| 1            | 1           | 05000038        | Ring NILOS          |              |
| 2            | 1           | 01050025        | Pulley              |              |
| 3            | 1           | 05005206        | Nut KM6             |              |
| 4            | 1           | 05005256        | Washer MB6          |              |
| 5            | 1           | 01050064        | Blade Housing       |              |
| 6            | 1           | 01050061        | Long Shaft Blade LH |              |

### 3 CUTTING ELEMENTS

#### 3.13 MOTOR BLADE HSG. ASSY SHORT LH - CODE 0105 0065

PL 3559

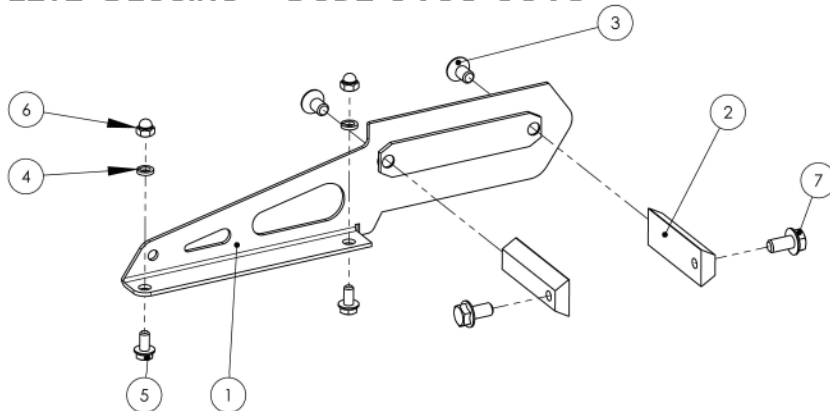


| <u>REF #</u> | <u>QTY.</u> | <u>PART NO.</u> | <u>DESCRIPTION</u>          | <u>ASSY.</u> |
|--------------|-------------|-----------------|-----------------------------|--------------|
| 1            | 1           | 05000038        | Ring NILOS                  |              |
| 2            | 1           | 01050064        | Blade Housing               |              |
| 3            | 1           | 01050055        | Short Shaft Motor, Blade LH |              |
| 4            | 1           | 01050044        | Motor Pulley                |              |
| 5            | 1           | 01050063        | Threaded Nut On Left        |              |

### 3 CUTTING ELEMENTS

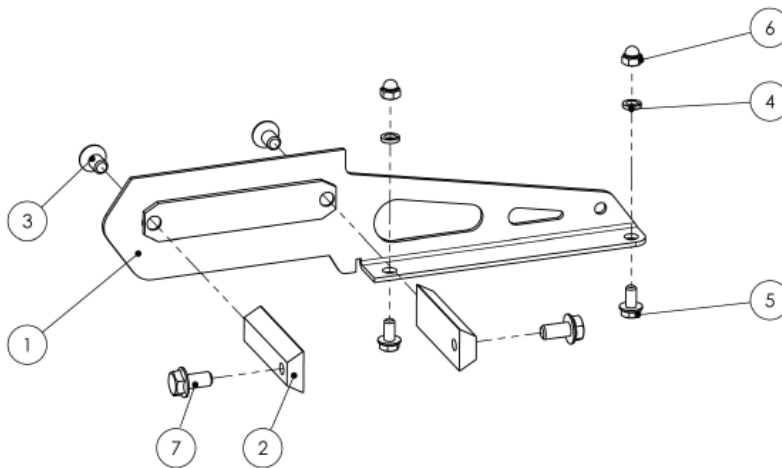
#### 3.14 COMPLETE CLOSING - CODE 0105 0018

PL 3542



| <u>REF #</u> | <u>QTY.</u> | <u>PART NO.</u> | <u>DESCRIPTION</u>        |
|--------------|-------------|-----------------|---------------------------|
| 1            | 1           | 01050017        | Closing                   |
| 2            | 2           | 01050015        | Link Part                 |
| 3            | 2           | 05010501        | Screw FHC M8 x 15         |
| 4            | 2           | 05015318        | Washer W6                 |
| 5            | 2           | 05011851        | Screw Tensilok M6 x 12 Zn |
| 6            | 2           | 05011234        | Nut M6                    |
| 7            | 2           | 05011877        | Screw Tensilok M8 x 16    |

#### COMPLETE CLOSING (SYMMETRICAL) - CODE 0105 0019



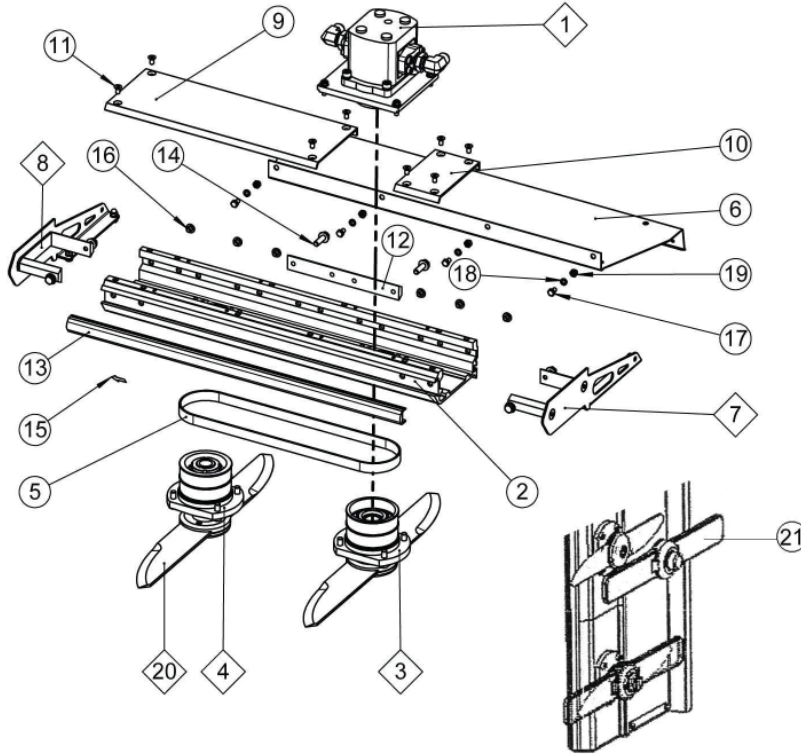
| <u>REF #</u> | <u>QTY.</u> | <u>PART NO.</u> | <u>DESCRIPTION</u>        |
|--------------|-------------|-----------------|---------------------------|
| 1            | 1           | 01050017        | Closing                   |
| 2            | 2           | 01050015        | Link Part                 |
| 3            | 2           | 05010501        | Screw FHC M8 x 15         |
| 4            | 2           | 05015318        | Washer W6                 |
| 5            | 2           | 05011851        | Screw Tensilok M6 x 12 Zn |
| 6            | 2           | 05011234        | Nut M6                    |
| 7            | 2           | 05011877        | Screw Tensilok M8 x 16    |



### 3 CUTTING ELEMENTS

#### 3.15 30.7" CUTTING ELEMENT - CODE 0000 1801

PL 3552



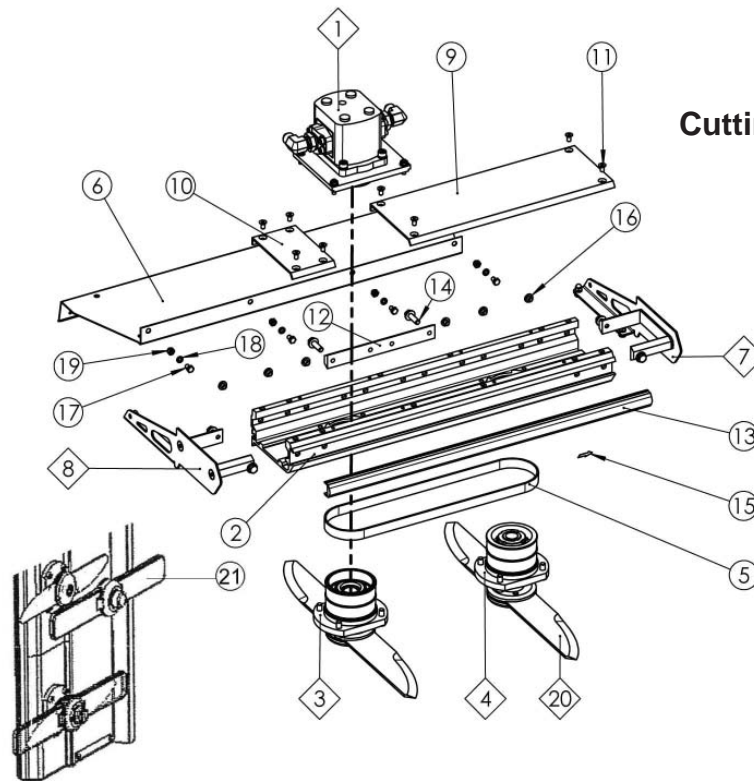
**Cutting Length - 30.7"**  
**10 cc Motor**  
**RH Rotation**

| <u>REF #</u> | <u>QTY.</u> | <u>PART NO.</u> | <u>DESCRIPTION</u>           | <u>ASSY.</u>    |
|--------------|-------------|-----------------|------------------------------|-----------------|
| 1            | 1           | 0105 0131       | Motor 10 cc                  | PL 3539 - Pg 21 |
| 2            | 1           | 01050045        | Aluminum Section 600 mm      |                 |
| 3            | 1           | 01050124        | Motor Blade Assy Short RH    | PL 3541 - Pg 23 |
| 4            | 1           | 01050130        | Blade Assy Long RH           | PL 3540 - Pg 22 |
| 5            | 1           | 05028596        | Belt S 250 17 x 842 mm       |                 |
| 6            | 1           | 01050096        | Blade Case 690 mm            |                 |
| 7            | 1           | 01050018        | Complete Closing With Screws | PL 3542 - Pg 30 |
| 8            | 1           | 01050019        | Complete Closing With Screws | PL 3542 - Pg 30 |
| 9            | 1           | 01050091        | Cover 380 mm                 |                 |
| 10           | 1           | 01050074        | Cover 80 mm                  |                 |
| 11           | 8           | 05010537        | Screw FHC M6 x 12            |                 |
| 12           | 1           | 00420016        | Junction L=200 mm            |                 |
| 13           | 1           | 01220600        | Leading Edge 600 mm          |                 |
| 14           | 2           | 05011876        | Screw Tensilok M8 x 25 Zn    |                 |
| 15           | 1           | 05016072        | Adhesive Sticker             |                 |
| 16           | 6           | 05017891        | Plastic Obturator            |                 |
| 17           | 4           | 05010020        | Screw TH M6 x 10             |                 |
| 18           | 4           | 05015318        | Washer W6                    |                 |
| 19           | 4           | 05011234        | Nut M6                       |                 |
| 20           | 2           | 05030169        | S.S. Blade 480 mm EL RH      |                 |

### 3 CUTTING ELEMENTS

#### 3.16 30.7" CUTTING ELEMENT - CODE 0000 1830

PL 3602



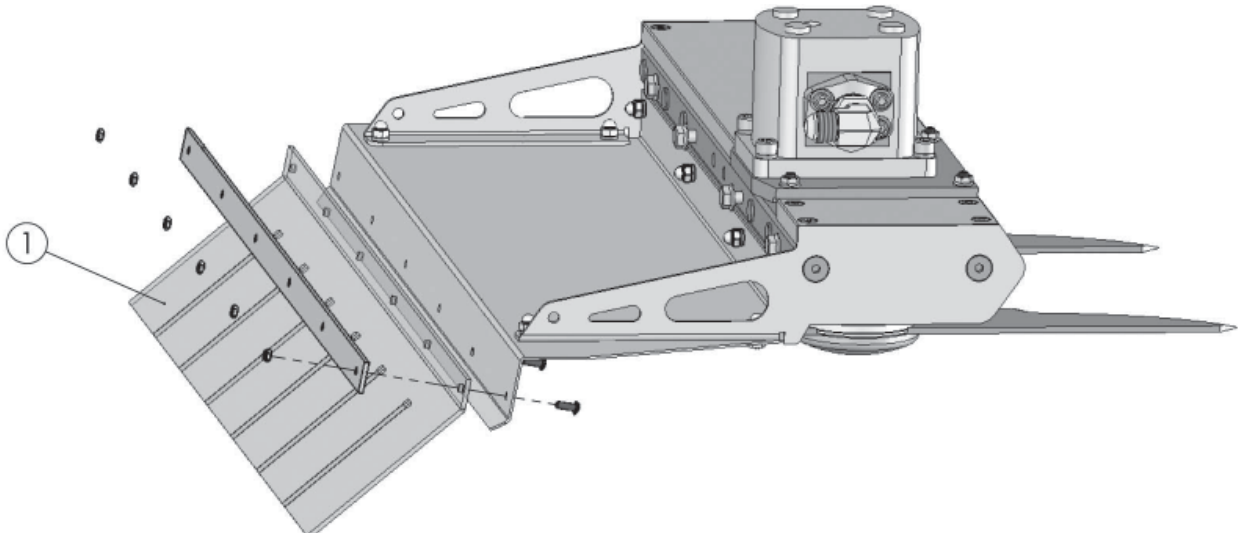
**Cutting Length - 30.7"**  
**10 cc Motor**  
**LH Rotation**

| <u>REF #</u> | <u>QTY.</u> | <u>PART NO.</u> | <u>DESCRIPTION</u>           | <u>ASSY.</u>    |
|--------------|-------------|-----------------|------------------------------|-----------------|
| 1            | 1           | 0105 0131       | Motor 10 cc                  | PL 3539 - Pg 21 |
| 2            | 1           | 01050045        | Aluminum Section 600 mm      |                 |
| 3            | 1           | 01050123        | Motor Blade Assy Short LH    | PL 3555 - Pg 27 |
| 4            | 1           | 01050129        | Blade Assy Long LH           | PL 3543 - Pg 26 |
| 5            | 1           | 05028596        | Belt S 250 17 x 842 mm       |                 |
| 6            | 1           | 01050096        | Blade Case 690 mm            |                 |
| 7            | 1           | 01050018        | Complete Closing With Screws | PL 3542 - Pg 30 |
| 8            | 1           | 01050019        | Complete Closing With Screws | PL 3542 - Pg 30 |
| 9            | 1           | 01050091        | Cover 380 mm                 |                 |
| 10           | 1           | 01050074        | Cover 80 mm                  |                 |
| 11           | 8           | 05010537        | Screw FHC M6 x 12            |                 |
| 12           | 1           | 00420016        | Junction L=200 mm            |                 |
| 13           | 1           | 01220600        | Leading Edge 600 mm          |                 |
| 14           | 2           | 05011876        | Screw Tensilok M8 x 25 Zn    |                 |
| 15           | 1           | 05016072        | Adhesive Sticker             |                 |
| 16           | 6           | 05017891        | Plastic Obturator            |                 |
| 17           | 4           | 05010020        | Screw TH M6 x 10             |                 |
| 18           | 4           | 05015318        | Washer W6                    |                 |
| 19           | 4           | 05011234        | Nut M6                       |                 |
| 20           | 2           | 05030170        | S.S. Blade 480 mm EL LH      |                 |

### 3 CUTTING ELEMENTS

#### 3.17 UPPER ELEMENT PLASTIC PROTECTION

PL 3665

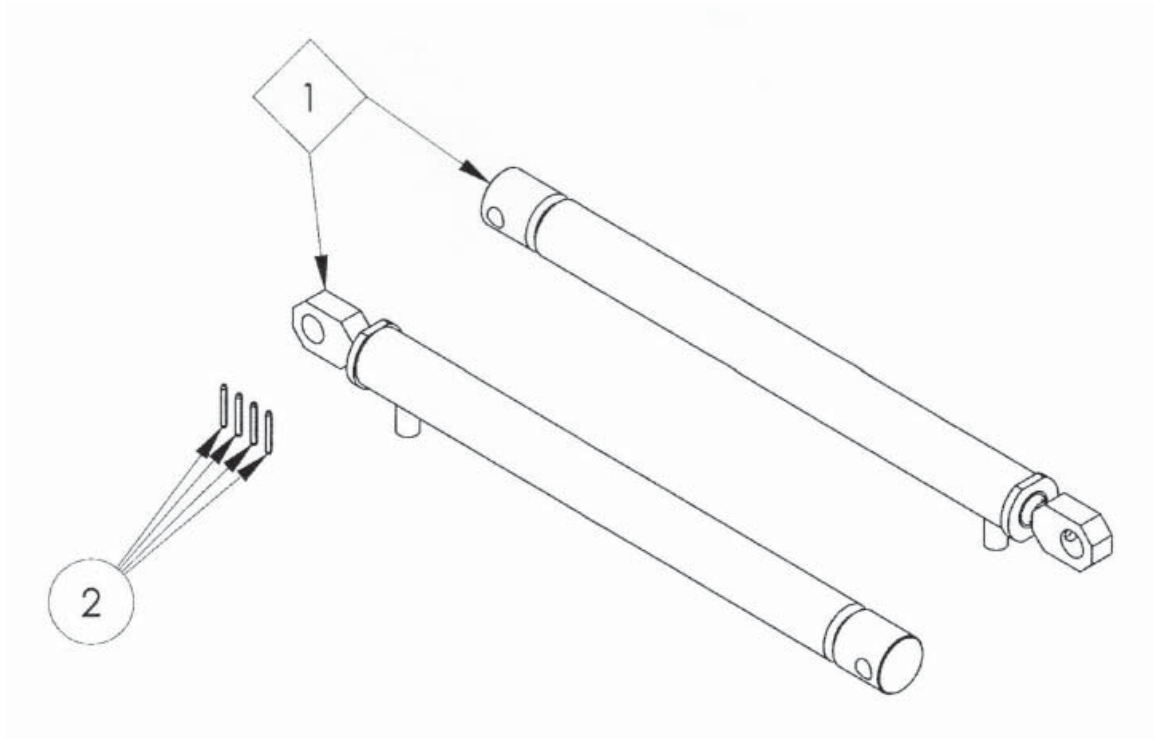


| <b><u>REF #</u></b> | <b><u>QTY.</u></b> | <b><u>PART NO.</u></b> | <b><u>DESCRIPTION</u></b>   |
|---------------------|--------------------|------------------------|---|
|                     | 1                  | 0000 2079              | Complete Kit Consisting of:<br>1 ea. Plastic Protection<br>1 ea. Fixation Plate<br>7 ea. Bolts M4 x 10<br>7 ea. Nuts M4 |
| 1                   | 1                  | 0105 0140              | Replacement Plastic Only  |

### 3 CUTTING ELEMENTS

#### 3.18 INDEPENDENT WIDTH ADJUSTMENT - CODE 0000 1504

PL 4868

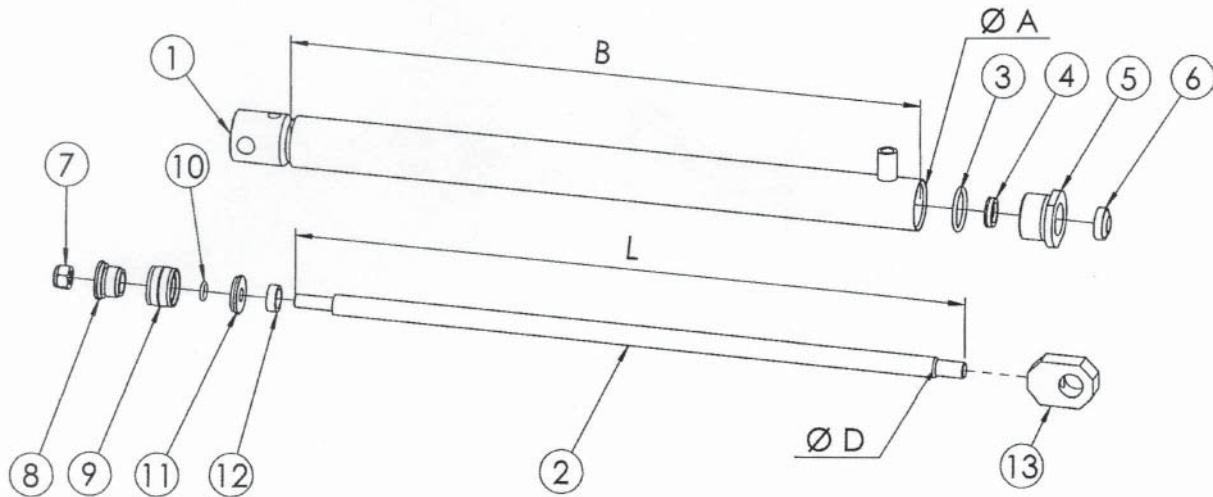


| <u>REF #</u> | <u>QTY.</u> | <u>PART NO.</u> | <u>DESCRIPTION</u>      | <u>ASSY.</u>    |
|--------------|-------------|-----------------|-------------------------|-----------------|
| 1            | 2           | 05019455        | Cylinder DE 35-18 C=400 | PL 1601 - Pg 35 |
| 2            | 4           | 05014123        | Elastic Pin Ø4 x 35 Zn  |                 |

### 3 CUTTING ELEMENTS

#### 3.19 DOUBLE EFFECT CYLINDER 35-18

PL 1601



| <u>REF #</u> | <u>QTY.</u> | <u>PART NO.</u> | <u>DESCRIPTION</u>     |
|--------------|-------------|-----------------|------------------------|
| 1            | 1           | Corps-Body D35  | Body (See Table Below) |
| 2            | 1           | Tie-Rod D18     | Rod (See Table Below)  |
| 3            | 1           | 05001307        | O-Ring                 |
| 4            | 1           | 05000043        | Joint                  |
| 5            | 1           | 05019005        | Threaded Base          |
| 6            | 1           | 05001002        | Joint                  |
| 7            | 1           | 05014300        | Brake Nut M12          |
| 8            | 1           | 05019670        | Half Piston            |
| 9            | 1           | 05000041        | Piston Joint           |
| 10           | 1           | 05001301        | O-Ring R 10            |
| 11           | 1           | 05019671        | Flask                  |
| 12           | 1           | 05019004        | Flange                 |
| 13           | 1           | 05019144        | Fork                   |

Dimensions in mm:

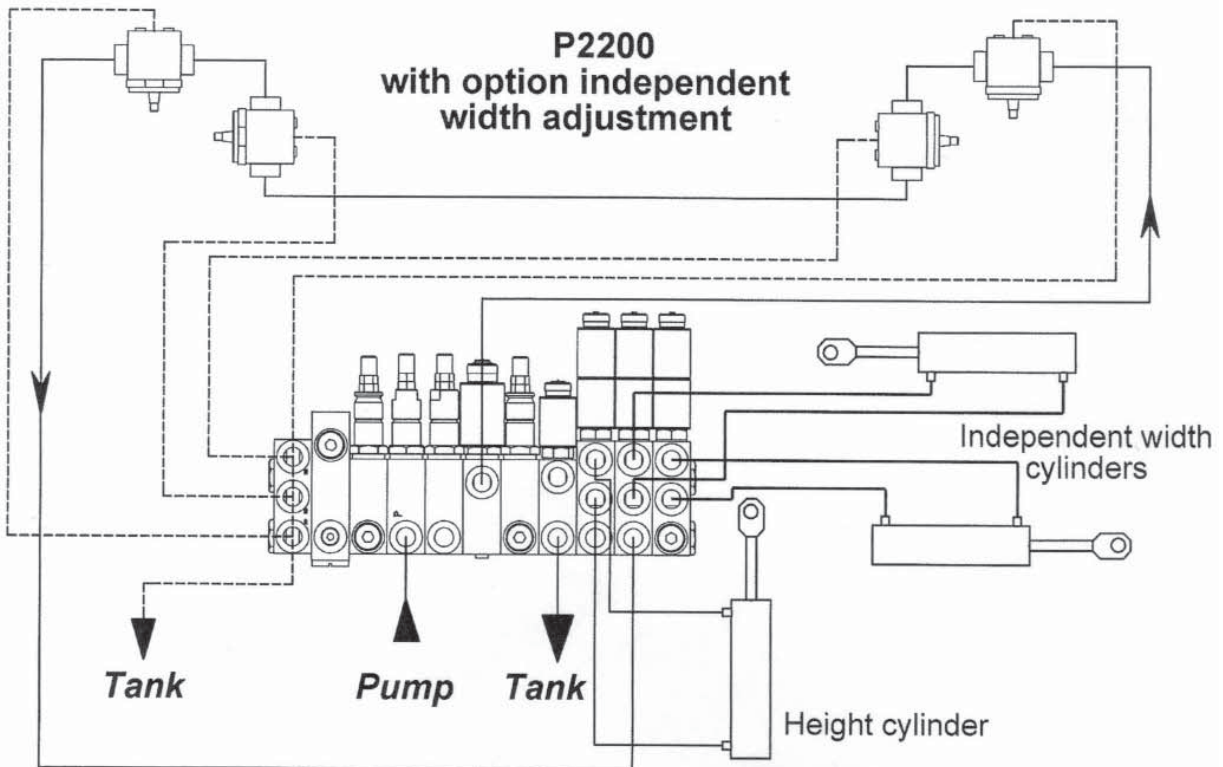
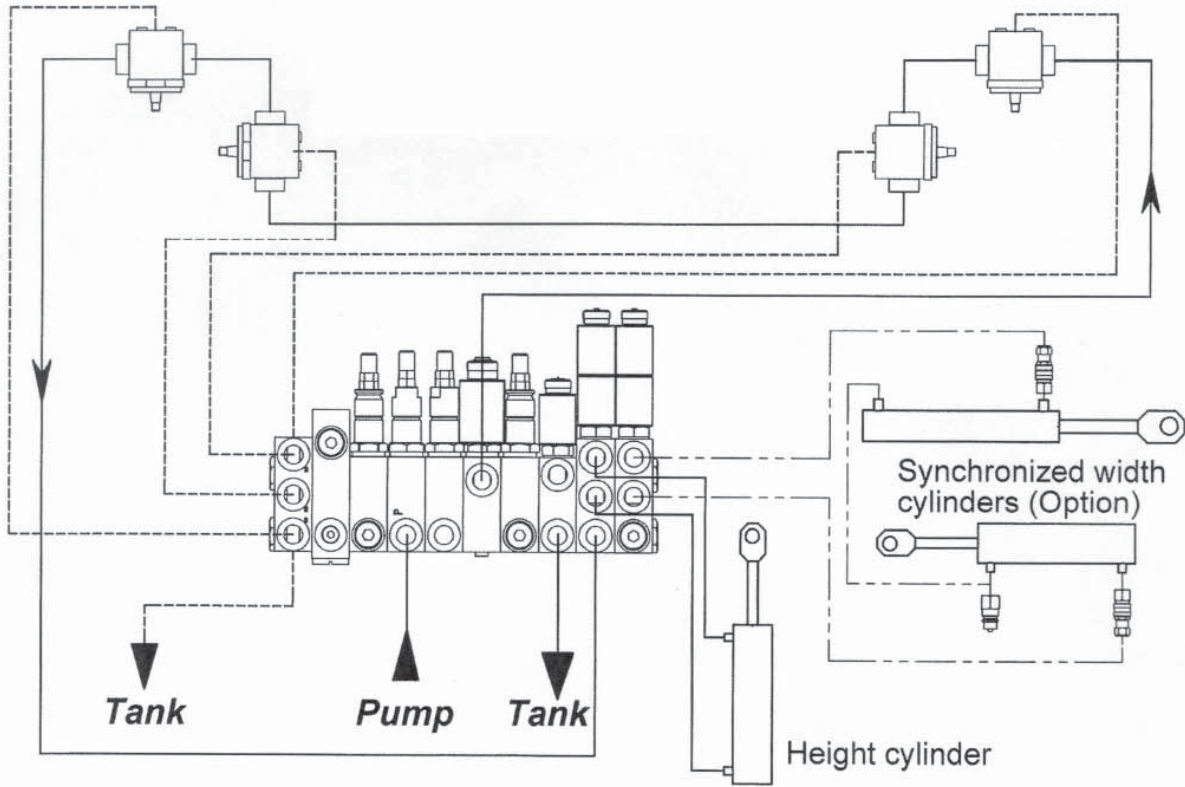
| Cylinder: | Rod:      | Body:     | ØA | B   | L   | ØD | Stroke: |
|-----------|-----------|-----------|----|-----|-----|----|---------|
| 0501 9455 | 0501 9457 | 0501 9456 | 45 | 474 | 510 | 18 | 400     |

- Set of Seals: 0501 9678

# 4 HYDRAULIC SCHEMATIC

## 4.1 ELECTRIC CONTROL P2200

PL 4866

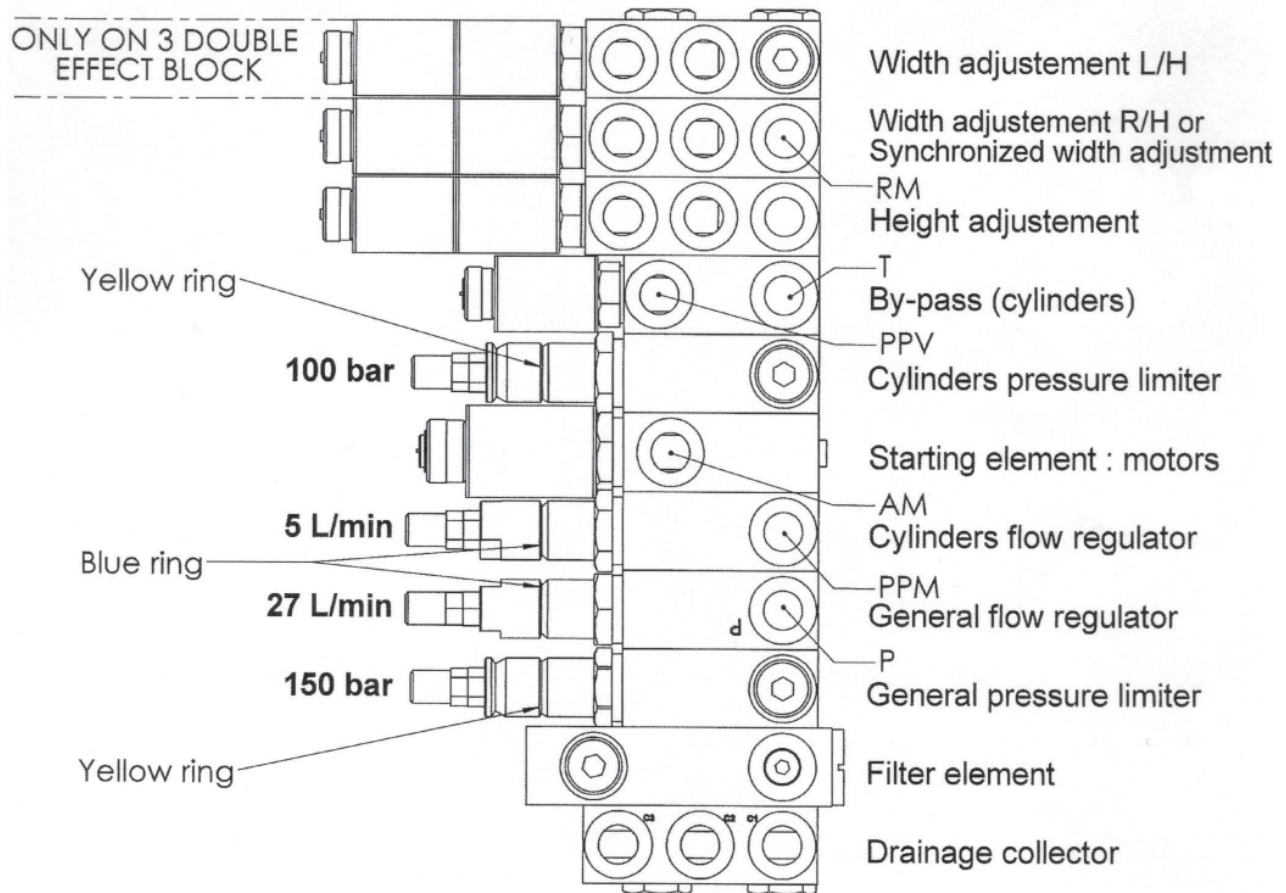


# 4 HYDRAULIC SCHEMATIC

## 4.2 HYDRAULIC SYSTEM - ELECTRIC CONTROL

PL 4867

**1 Simple effect & 3 double effect - Ref: 0502 2936**  
**1 Simple effect & 2 double effect - Ref: 0502 2935**



**PPV - Cylinders Pressure Taker**  
**PPM - Motors Pressure Taker**  
**AM - Motors Supply**

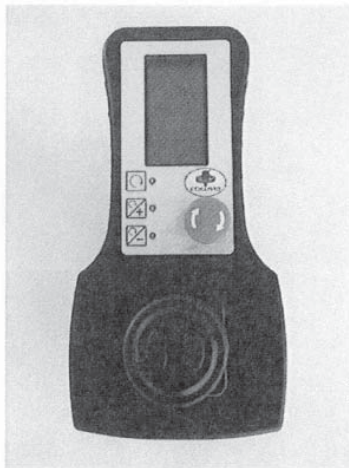
**RM: Motors Return**  
**P - General Power**  
**T - Return**

# 4 HYDRAULIC SCHEMATIC

## 4.3 ELECTRIC CONTROL HANDLE - CODE 0000 2368 WITH CROSS LEVER

PL 4858

**FOR MACHINES EQUIPPED WITH  
1 TO 5 DOUBLE EFFECT CYLINDERS,  
WITH CONTROL FOR A PROPORTIONAL  
VALVE OR DOUBLE ON/OFF MOTORS**

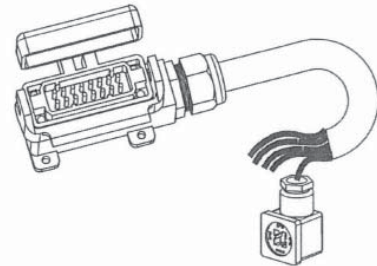
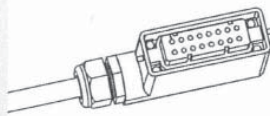


Complete electric control handle with box, wires and female plug :

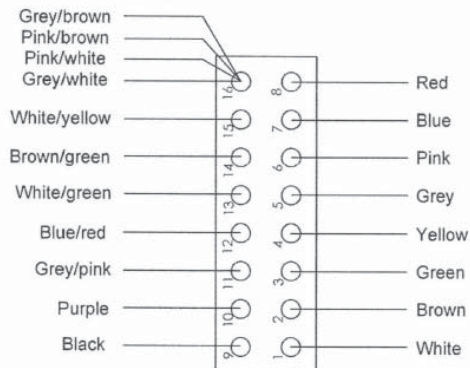
**0506 0052**

Bundle of wires and male plug (14 connectors) :

**0506 1052**



**Support :**  
**0502 9872**



Female plug

**Connectors 1 to 8, 12 and 13 :**  
Double effect cylinder functions

**Connector 9 :**  
ON/OFF motors function

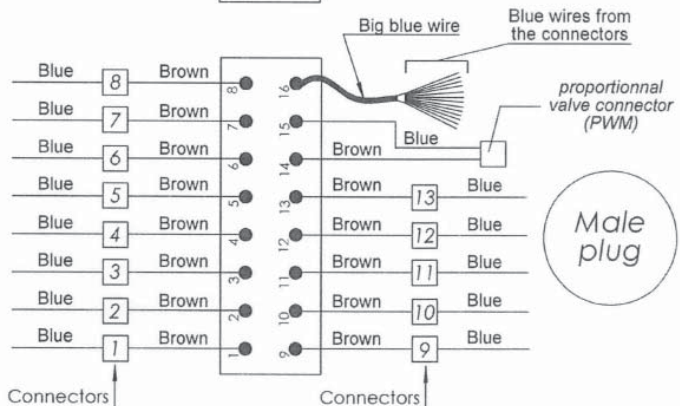
**Connector 10 :**  
By-pass function

**Connector 11 :**  
EVC function (only in case of closed center hydraulic systems which work with the additional hydraulic unit : 0000 1561)

**OR**

Second ON/OFF motors function

**Connector PWM (prop.) :**  
Proportional valve function (for electric flow regulator)



Male plug