



**COLLARD®**

# VINE TRIMMER

## Parts Manual

For P2200S 160 Universal

Code No: 0113 4400

s/n: \_\_\_\_\_

*Marketed by:*



13477 Benson Ave. • Chino, CA  
Ph: 909/548-4848 • Fax: 909/548-4747

[www.gearmore.com](http://www.gearmore.com)

In this catalog you will find this descriptive for each reference mark:

⊙ ? = **Part** - Refer to the reference number to find the part number.

◇ ? = **Assembly (Set of Parts)** - Refer to the reference number and the number of the "PL" where this set of parts is detailed.



*P2200S 160 Universal Vine Trimmer*

# TABLE OF CONTENTS

<u>SECTION</u>	<u>DESCRIPTION</u> .....	<u>PAGE</u>
<b>1</b>	<b>Introduction</b> .....	<b>1</b>
1.1	Operator's Responsibility .....	1
<b>2</b>	<b>Spare Parts - Frames</b> .....	<b>2 - 19</b>
2.1	Frame Support ..... (PL 5717) .....	2
2.2	Complete Frame ..... (PL 5716) .....	3
2.3	Complete Frame Width Support ..... (PL 5715) .....	4-5
2.4	Complete Width Adjust. Left ..... (PL 5725) .....	6
2.5	Complete Width Adjust. Right ..... (PL 5724) .....	7
2.6	Complete Arm Left ..... (PL 5723) .....	8
2.7	Complete Arm Right ..... (PL 5722) .....	9
2.8	Complete Male Frame ..... (PL 5713) .....	10
2.9	E-Chain System ..... (PL 5714) .....	11
2.10	Large Lower Fixing ..... (PL 2262) .....	12
2.11	Side Element Support ..... (PL 5712) .....	13
2.12	Side Element Support ..... (PL 3601) .....	14
2.13	Long Braces ..... (PL 4782) .....	15
2.14	Control Lever ..... (PL 5610) .....	16
2.15	Flexible Support Kit..... (PL 5606) .....	17
	Play Adjustment on Sliding Tube..... (PL 4365) .....	17
2.16	Blades ..... (PL 3537) .....	18
2.17	Belts ..... (PL 4295) .....	19
<b>3</b>	<b>Spare Parts - Cutting Elements</b> .....	<b>20 - 41</b>
3.1	Hydraulic Motor ..... (PL 3564) .....	20
3.2	Cutting Assembly LH ..... (PL 5320) .....	21-22
3.3	Cutting Assembly RH ..... (PL 5321) .....	23-24
3.4	Skirting Element RH..... (PL 4712) .....	25
3.5	Skirting Element LH ..... (PL 4713) .....	26
3.6	Articulation Skirting Element ..... (PL 4714) .....	27
3.7	Complete Closing ..... (PL 3542) .....	28
3.8	30.7" Cutting Element Pos. 2 RH ..... (PL 5301) .....	29-30
3.9	30.7" Cutting Element Pos. 1 LH ..... (PL 5735) .....	31-32
3.10	Blade Assy Long RH ..... (PL 3540) .....	33
3.11	Blade Assy Long LH ..... (PL 3543) .....	34
3.12	Motor Blade Assy Short RH ..... (PL 3541) .....	35
3.13	Motor Blade Assy Short LH ..... (PL 3555) .....	36
3.14	Motor Blade Hsg. Assy Short RH ..... (PL 3557) .....	37
3.15	Motor Blade Hsg. Assy Short LH ..... (PL 3559) .....	38
3.16	Blade Hsg. Assy Long RH ..... (PL 3556) .....	39
3.17	Blade Hsg. Assy Long LH ..... (PL 3558) .....	40
3.18	Plastic Protection Kit ..... (PL 3665) .....	41

# TABLE OF CONTENTS

<u>SECTION</u>	<u>DESCRIPTION</u> .....	<u>PAGE</u>
<b>4</b>	<b>Spare Parts - Hydraulics</b> .....	<b>42 - 50</b>
4.1	Electric Wiring System ..... (PL 2528) .....	42
4.2	Electric Control ..... (PL 4587) .....	43
4.3	Electric Control Handle 0000 2340 ..... (PL 4456) .....	44
4.4	Electric Control Handle 0000 2404 ..... (PL 4857) .....	45
4.5	Electric Control with Mono Lever ..... (PL 5194) .....	46
4.6	Cylinder Double Effect 35 - 18 ..... (PL 1601) .....	47
4.7	Cylinder 35 - 25 ..... (PL 1604) .....	48
4.8	Flow Regulator ..... (PL 3792) .....	49
4.9	Drainage Collector ..... (PL 3783) .....	50
<b>5</b>	<b>Special Tools</b> .....	<b>51</b>
5.1	Special Vine Trimmer Tools ..... (PL 3988) .....	51
<b>6</b>	<b>Legal Notifications</b> .....	<b>52</b>

# 1 INTRODUCTION

Congratulations on your selection of a Collard Vine Trimmer.

## **HISTORY**

The COLLARD family has been servicing grape growers for 5 generations. Andre Collard invented the first mechanical vine trimmer in 1962. Since that development COLLARD has made numerous improvements and continues to be the world leader in trimmers.

## **QUALITY CONTROL**

Every stage in the production process is controlled to guarantee superior quality. After final assembly, each machine is run through a detailed test where everything is checked - rotation speed, operating pressure, hydraulic cylinders, flow rates, etc. All this is done to insure that every machine leaving the factory is in perfect working order.



## 1.1 OPERATOR'S RESPONSIBILITY

Safe, efficient and trouble free operation of your Vine Trimmer requires that you and anyone else who will be operating or maintaining the machine, read and understand the Safety, Installation, Operation, Maintenance, and Troubleshooting information contained within the Operator's Manual.

Keep this manual handy for frequent reference and to pass on to new operators or owners. Call your tractor dealer if you need assistance, information or additional copies of the manuals.

**OPERATOR ORIENTATION** - The directions left, right, front and rear, as mentioned throughout this manual, are as seen from the driver's seat and facing in the direction of travel.

NAME: \_\_\_\_\_

PURCHASED FROM: \_\_\_\_\_

DATE OF PURCHASE: \_\_\_\_\_

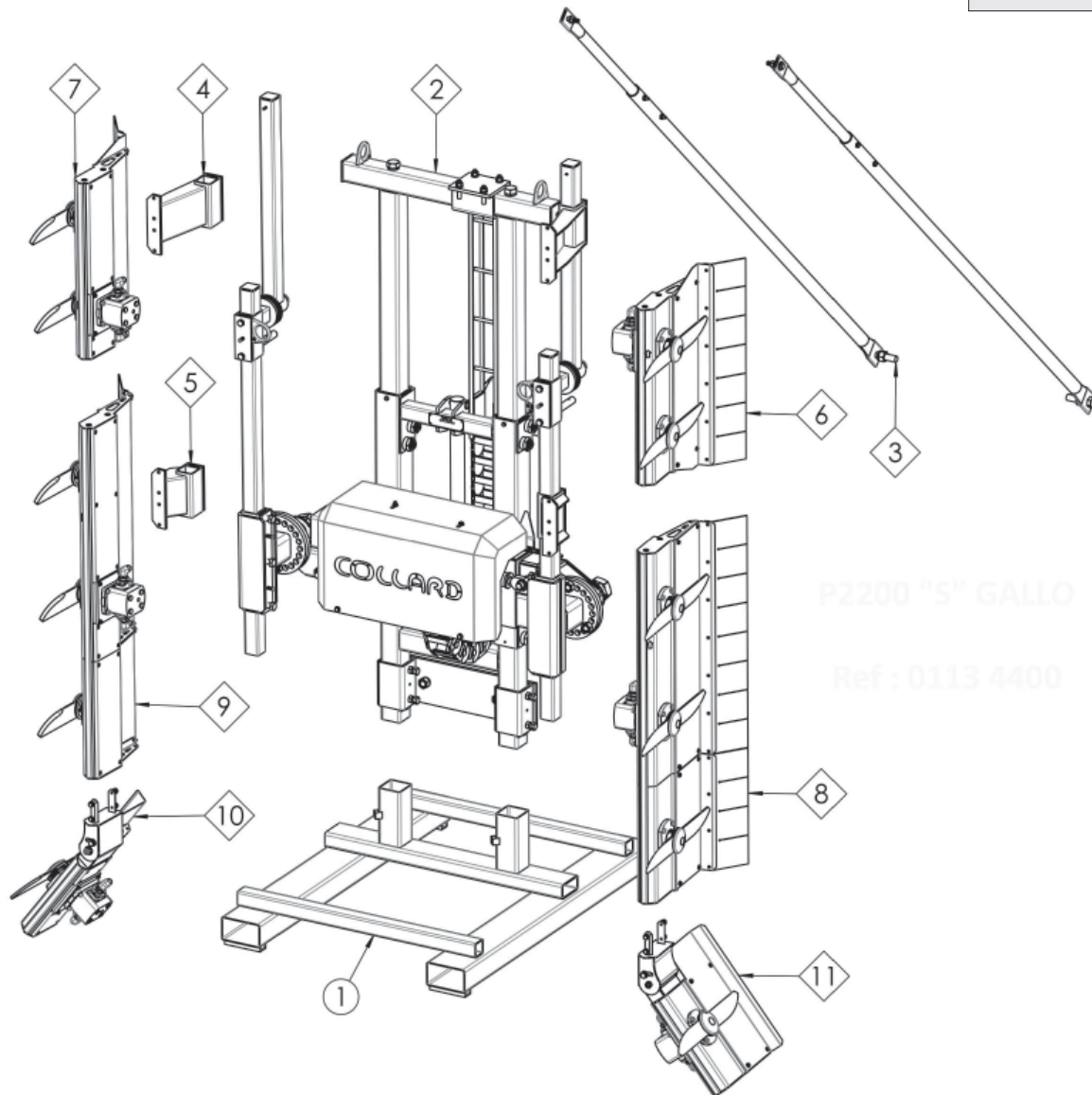
CODE NUMBER: \_\_\_\_\_

SERIAL NUMBER: \_\_\_\_\_

## 2 SPARE PARTS - FRAMES

### 2.1 FRAME SUPPORT - CODE 0113 4400

PL 5717

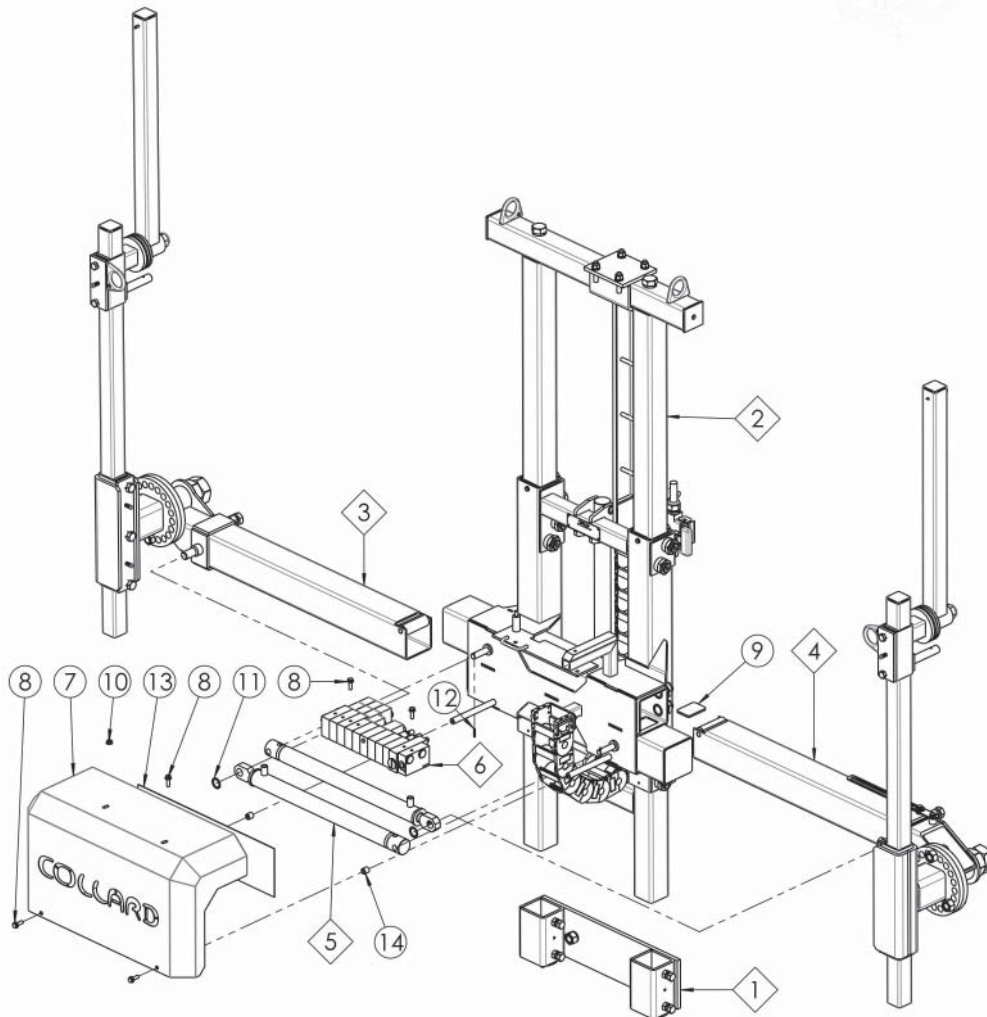


Ref.	Qty.	Part No.	Description	Assy.
1	1	0000 5851	Support	
2	1	0113 4418	Complete Frame	PL 5716 - Pg 3
3	1	0137 0296	Long Braces	PL 4782 - Pg 15
4	2	0113 4419	Upper Side Element Support	PL 5712 - Pg 13
5	2	0105 0029	Lower Side Element Support	PL 3601 - Pg 14
6	1	0000 2489KB	Cutting Element 2 blades 780 LH/P1/12cc	PL 5735 - Pg 31
7	1	0000 1890KB	Cutting Element 2 blades 780 RH/P2/12cc	PL 5301 - Pg 29
8	1	0000 1906KB	Cutting Element 3 blades 1300 LH/P2/12cc	PL 5320 - Pg 21
9	1	0000 1905KB	Cutting Element 3 blades 1300 RH/P2/12cc	PL 5321 - Pg 23
10	1	0000 2360	Skirting Element "S" R/H 12cc	PL 4712 - Pg 25
11	1	0000 2361	Skirting Element "S" L/H 12cc	PL 4713 - Pg 26

## 2 SPARE PARTS - FRAMES

### 2.2 COMPLETE FRAME - CODE 0113 4418

PL 5716

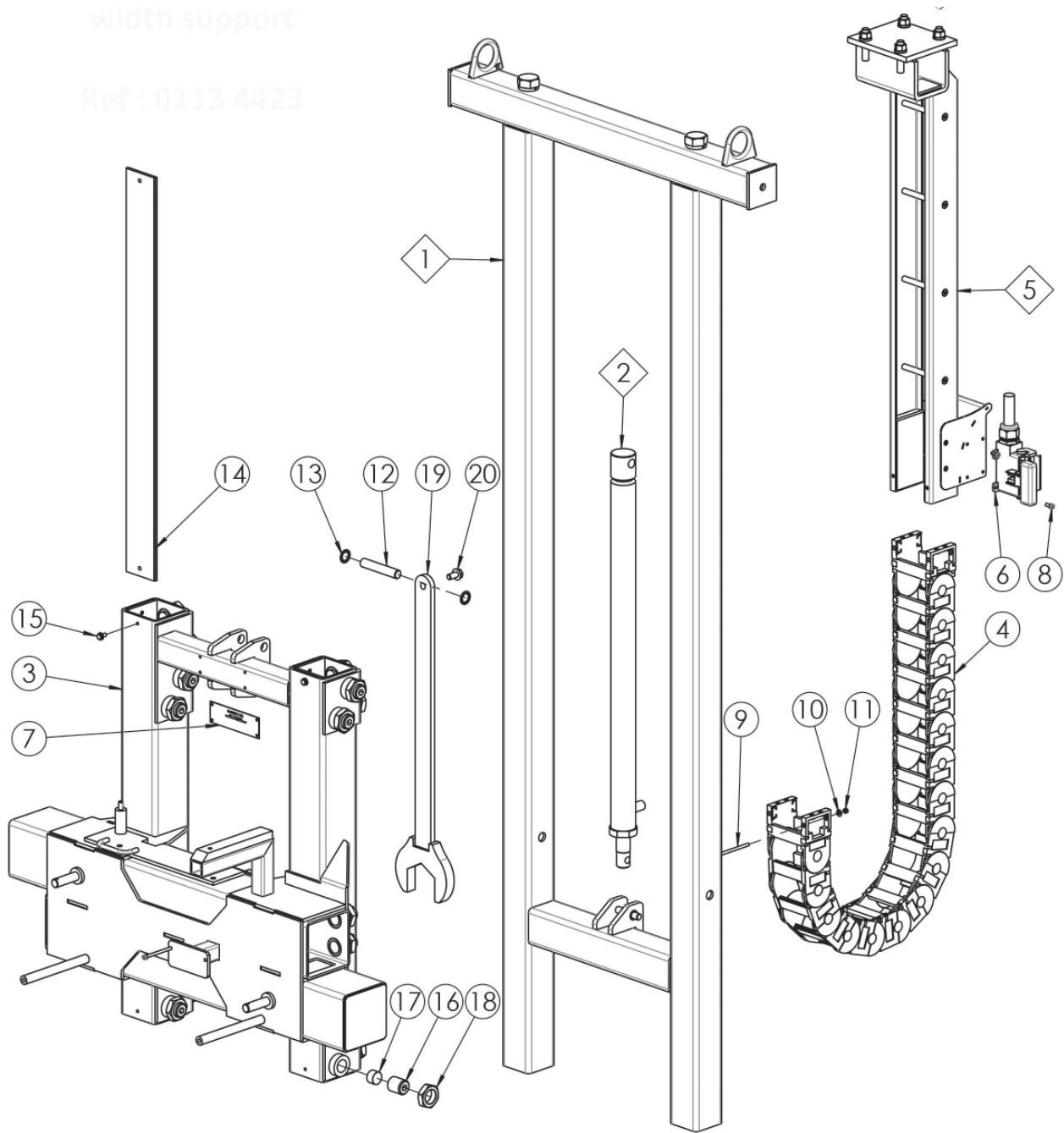


Ref.	Qty.	Part No.	Description	Assy.
1	1	0000 1476	Large Lower Fixing	PL 2262 - Pg 12
2	1	0113 4423	Complete Frame Width Support	PL 5715 - Pg 4
3	1	0113 4424	Complete Width Adjustment Right	PL 5724 - Pg 7
4	1	0113 4425	Complete Width Adjustment Left	PL 5725 - Pg 6
5	2	0501 9598	Cylinder DE 35-18 C=450 mm	PL 1601 - Pg 47
6	1	0502 2936	Electric Controls Distributor	PL 2528 - Pg 42
7	1	0113 4413	Casing	
8	5	0501 1876	Bolt Tensilok M8 x 25 Zn	
9	2	0113 4412	Pad Slide Poly	
10	1	0501 1216	Nut M8 Tensilok	
11	2	0501 4321	Washer Self Locking Ø22	
12	2	0501 4063	Elastic Pin 4 x 25	
13	1	0113 4431	Spacer	
14	2	0113 4432	Ring	

## 2 SPARE PARTS - FRAMES

### 2.3 COMPLETE FRAME WIDTH SUPPORT CODE 0113 4423

PL 5715





## 2 SPARE PARTS - FRAMES

### 2.3 COMPLETE FRAME WIDTH SUPPORT CODE 0113 4423

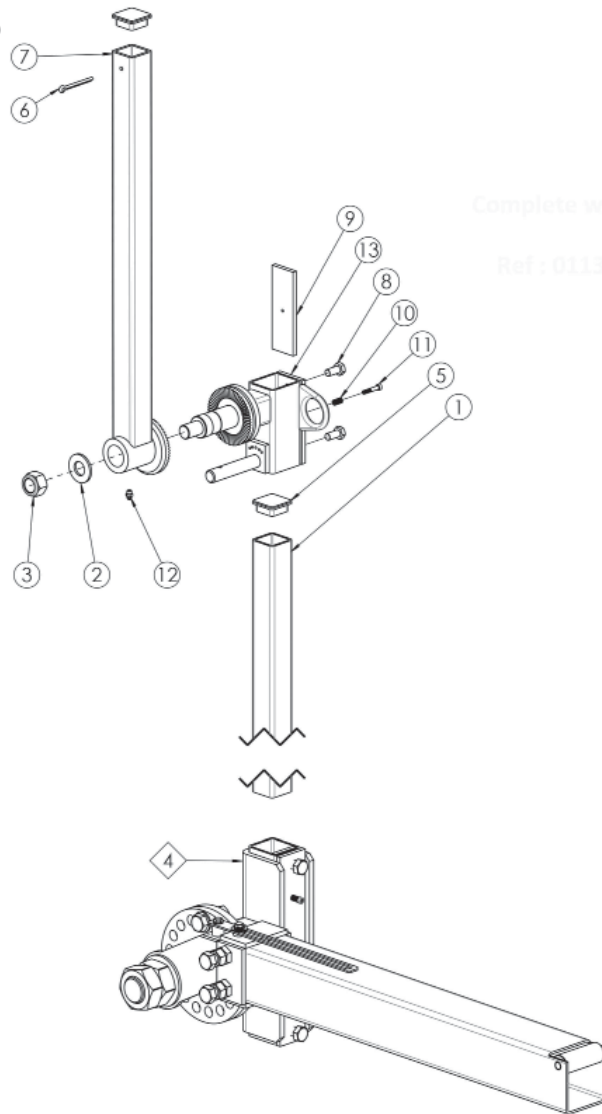
PL 5715

Ref.	Qty.	Part No.	Description	Assy.
1	1	0113 4420	Complete Male Frame	PL 5713 - Pg 10
2	1	0502 0201	Cylinder DE Ø35-25 Stroke = 600mm	PL 1604 - Pg 48
3	1	0113 4401	Female Frame	
4	1	05026536-1005	E-Chain System	
5	1	0113 4422	Support Complete E-Chain System	PL 5714 - Pg 11
6	1	0504 8295	Male Plug (16 Contacts)	
7	1	0501 6066	Identity Plate	
8	4	0501 0954	Bolt CHC M5 x 12	
9	2	0501 0972	Bolt CHC M5 x 80	
10	2	0501 5050	Washer M5	
11	2	0501 1218	Nut M5 Hu	
12	1	0051 0083	Axle	
13	2	0501 4320	Washer Self Locking Ø16	
14	4	0113 4421	Slide Plate	
15	4	0501 1851	Bolt Tensilok M6 x 12 Zn	
16	24	6501 7101	Bolt M27	
17	24	6910 0214	Plastic Block	
18	24	6506 0306	Nut H M 27	
19	1	0504 2860	Wrench	
20	1	0501 1867	Bolt Tensilok M10 x 20	

## 2 SPARE PARTS - FRAMES

### 2.4 COMPLETE WIDTH ADJUSTMENT LEFT - CODE 0113 4425

PL 5725

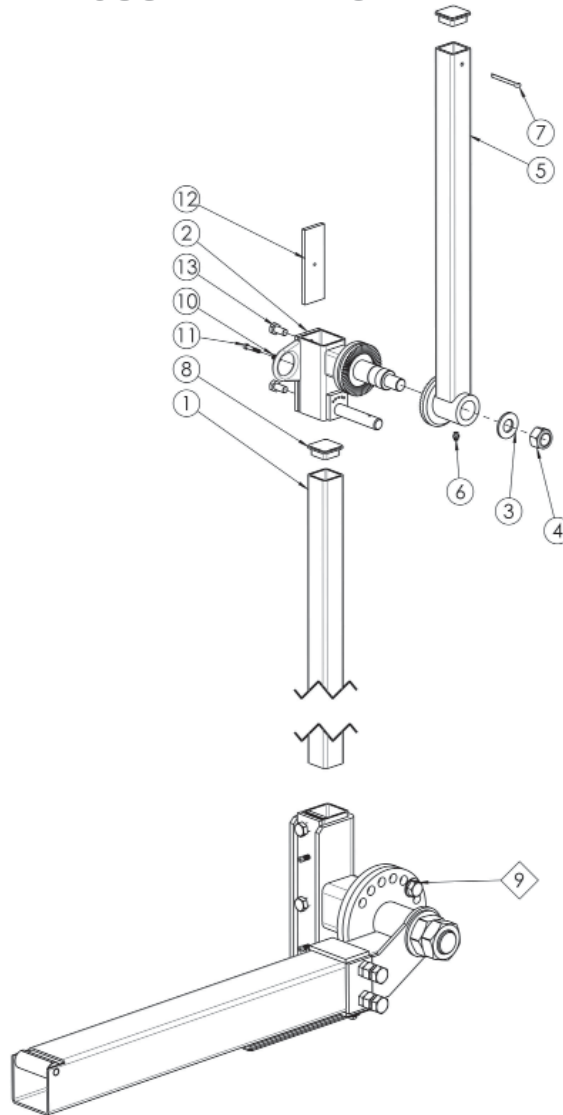


Ref.	Qty.	Part No.	Description	Assy.
1	1	0113 4427	Tube 50 x 50 x 4	
2	1	0501 5004	Washer M24	
3	1	0501 4326	Locknut M24	
4	1	0113 4430	Complete Arm Left	PL 5723 - Pg 8
5	2	0501 7869	Cap	
6	1	0501 4112	Cotter Key V6 x 70	
7	1	0113 1008	Tube Horizontal Cutter 50 x 50 x 4	
8	2	0501 0006	Bolt TH M12 x 25	
9	1	0502 9543	Attachment Wedge	
10	1	0501 1954	Compressing Spring	
11	1	0501 0942	Bolt CHC M6 x 35	
12	1	0501 6500	Grease Zerk M8	
13	1	0113 4408 BIS	Flange Bracket LH	

## 2 SPARE PARTS - FRAMES

### 2.5 COMPLETE WIDTH ADJUSTMENT RIGHT - CODE 0113 4424

PL 5724

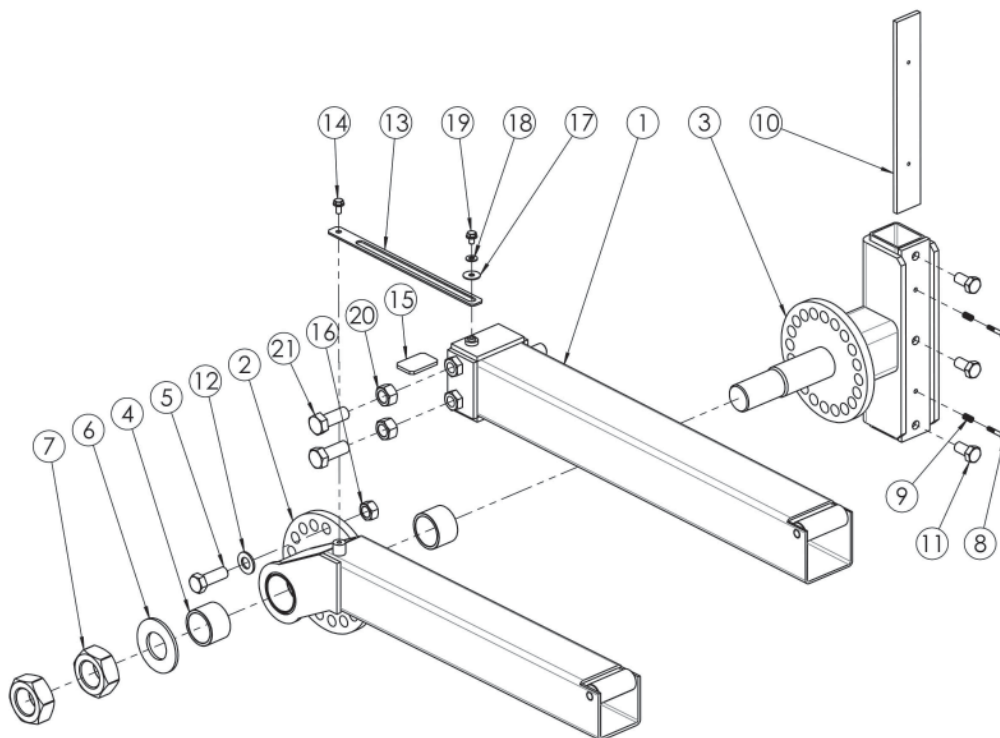


Ref.	Qty.	Part No.	Description	Assy.
1	1	0113 4427	Tube 50 x 50 x 4	
2	1	0113 4408	Flange Bracket RH	
3	1	0501 5004	Washer M24	
4	1	0501 4326	Locknut M24	
5	1	0113 1008	Tube Horizontal Cutter 50 x 50 x 4	
6	2	0501 6500	Grease Zerk M8	
7	1	0501 4112	Cotter Key V6 x 70	
8	2	0501 7869	Cap	
9	1	0113 4428	Complete Arm Right	PL 5722 - Pg 9
10	1	0501 1954	Compressing Spring	
11	1	0501 0942	Bolt CHC M6 x 35	
12	1	0502 9543	Attachment Wedge	
13	2	0501 0006	Bolt TH M12 x 25	

## 2 SPARE PARTS - FRAMES

### 2.6 COMPLETE ARM LEFT - CODE 0113 4430

PL 5723

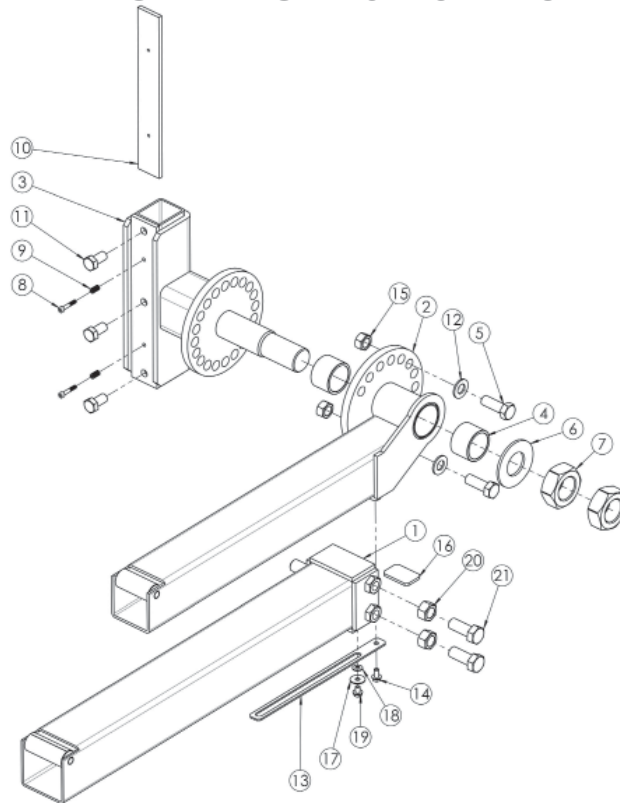


Ref.	Qty.	Part No.	Description	Assy.
1	1	0113 4404	Left Arm	
2	1	0113 4406	Articulated Left Arm	
3	1	0113 4407	Articulated Support Element	
4	2	0500 5301	Bushing	
5	2	0501 0112	Bolt TH M18 x 50	
6	1	0137 0385	Washer 46 x 90	
7	2	0137 0384	Nut M45 x 1.5	
8	2	0501 0942	Bolt CHC M6 x 35	
9	2	0501 1954	Compressing Spring	
10	1	0137 0386	Long Attachment Wedge	
11	3	0501 0120	Bolt TH M16 x 30	
12	2	0501 5027	Washer M18 Zn	
13	1	0113 4410	Guide Stop	
14	1	0501 1877	Bolt Tensilok M8 x 16	
15	1	0113 4411	Wear Plate	
16	2	0501 1301	Nut M18 Hu	
17	1	0501 5028	Washer L8 Zn	
18	1	0501 5026	Washer M8 Zn	
19	1	0501 1861	Bolt Tensilok M8 x 12 Zn	
20	2	0501 1300	Nut M20 Hu	
21	2	0501 0043	Bolt TH M20 x 50	

## 2 SPARE PARTS - FRAMES

### 2.7 COMPLETE ARM RIGHT - CODE 0113 4428

PL 5722

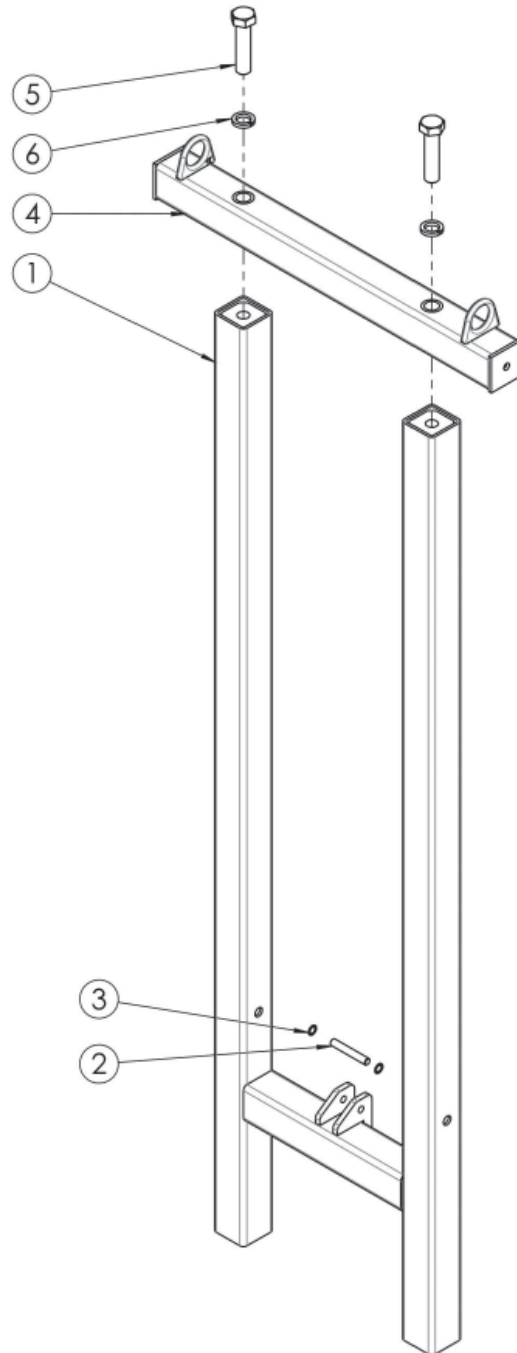


Ref.	Qty.	Part No.	Description	Assy.
1	1	0113 4403	Right Arm	
2	1	0113 4405	Articulated Right Arm	
3	1	0113 4407	Articulated Support Element	
4	2	0500 5301	Bushing	
5	2	0501 0112	Bolt TH M18 x 50	
6	1	0137 0385	Washer 46 x 90	
7	2	0137 0384	Nut M45 x 1.5	
8	2	0501 0942	Bolt CHC M6 x 35	
9	2	0501 1954	Compressing Spring	
10	1	0137 0386	Long Attachment Wedge	
11	3	0501 0120	Bolt TH M16 x 30	
12	2	0501 5027	Washer M18 Zn	
13	1	0113 4410	Guide Stop	
14	1	0501 1877	Bolt Tensilok M8 x 16	
15	2	0501 1301	Nut M18 Hu	
16	1	0113 4411	Wear Plate	
17	1	0501 5028	Washer L8 Zn	
18	1	0501 5026	Washer M8 Zn	
19	1	0501 1861	Bolt Tensilok M8 x 12 Zn	
20	2	0501 1300	Nut M20 Hu	
21	2	0501 0043	Bolt TH M20 x 50	

## 2 SPARE PARTS - FRAMES

### 2.8 COMPLETE MALE FRAME - CODE 0113 4420

PL 5713

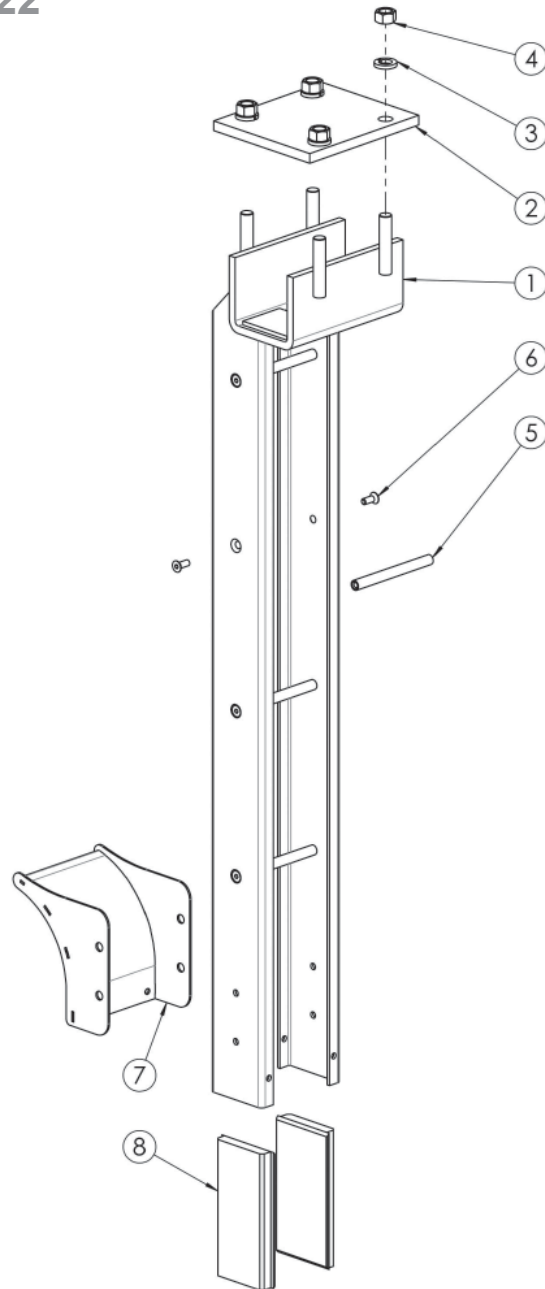


Ref.	Qty.	Part No.	Description	Assy.
1	1	0113 4402	Male Frame	
2	1	0073 1408	Axle For Cylinder D12	
3	2	0501 4318	Washer Self Locking D12	
4	1	0073 1407	Top Tube	
5	2	0501 0095	Bolt TH M24 x 100 Zn	
6	2	0501 5322	Washer W24 Zn	

## 2 SPARE PARTS - FRAMES

### 2.9 SUPPORT COMPLETE E-CHAIN SYSTEM - CODE 0113 4422

PL 5714

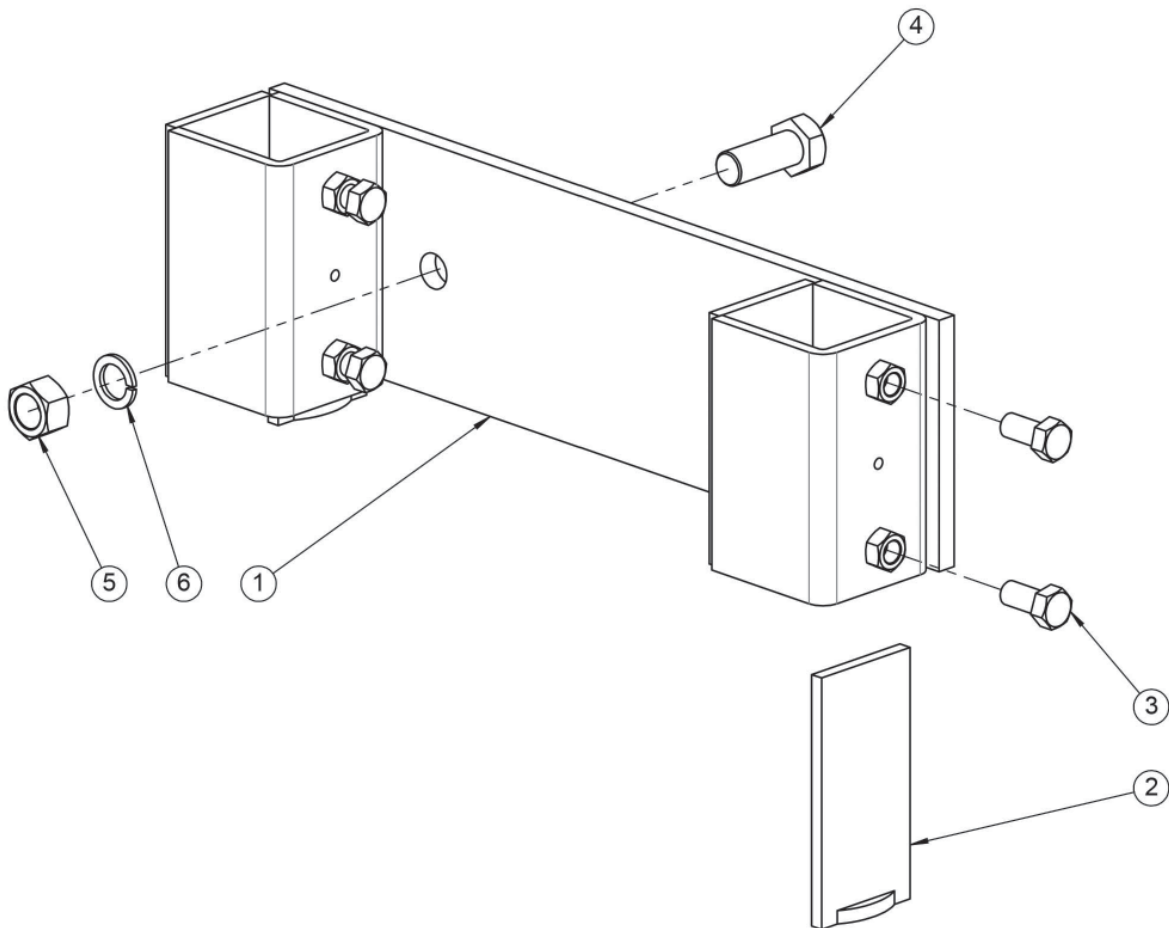


Ref.	Qty.	Part No.	Description	Assy.
1	1	0113 4414	E-Chain System Support	
2	1	0502 9680	Attachment Wedge Cap Plate	
3	4	0501 5316	Washer W12	
4	4	0501 1203	Nut M12 Hu	
5	4	0113 4415	Brace Spacer Pin	
6	8	0501 0513	Bolt FHC M6 x 16	
7	1	0113 4416	Gutter	
8	2	0113 4417	Blocking	

## 2 SPARE PARTS - FRAMES

### 2.10 LARGE LOWER FIXING - CODE 0000 1476

PL 2262



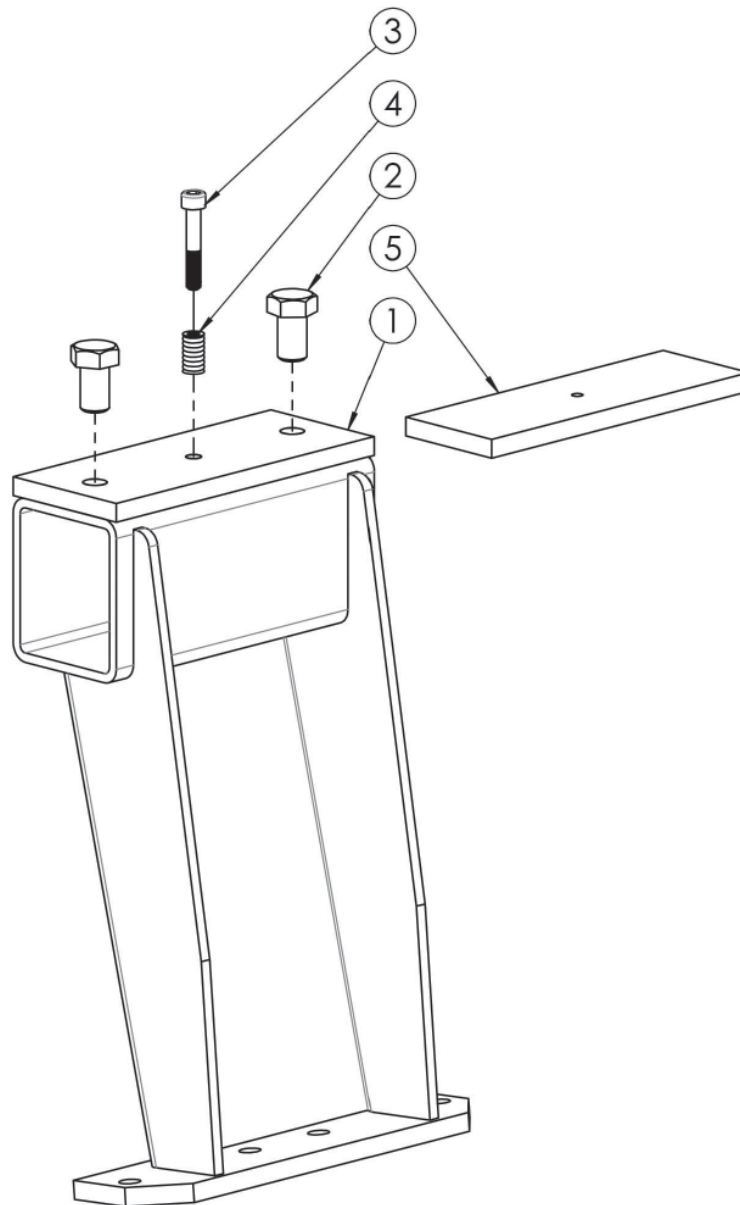
Ref.	Qty.	Part No.	Description	Assy.
1	1	0020 0470	Large Fixing For A Front Mounting	
2	2	0502 9511	Flat Blocking	
3	4	0501 0038	Bolt M14 x 30	
4	2	0501 0043	Bolt TH M20 x 50 Zn	
5	2	0501 1200	Nut H M20 Zn	
6	2	0501 5315	Washer W20	



## 2 SPARE PARTS - FRAMES

### 2.11 UPPER SIDE ELEMENT SUPPORT - CODE 0113 4419

PL 5712

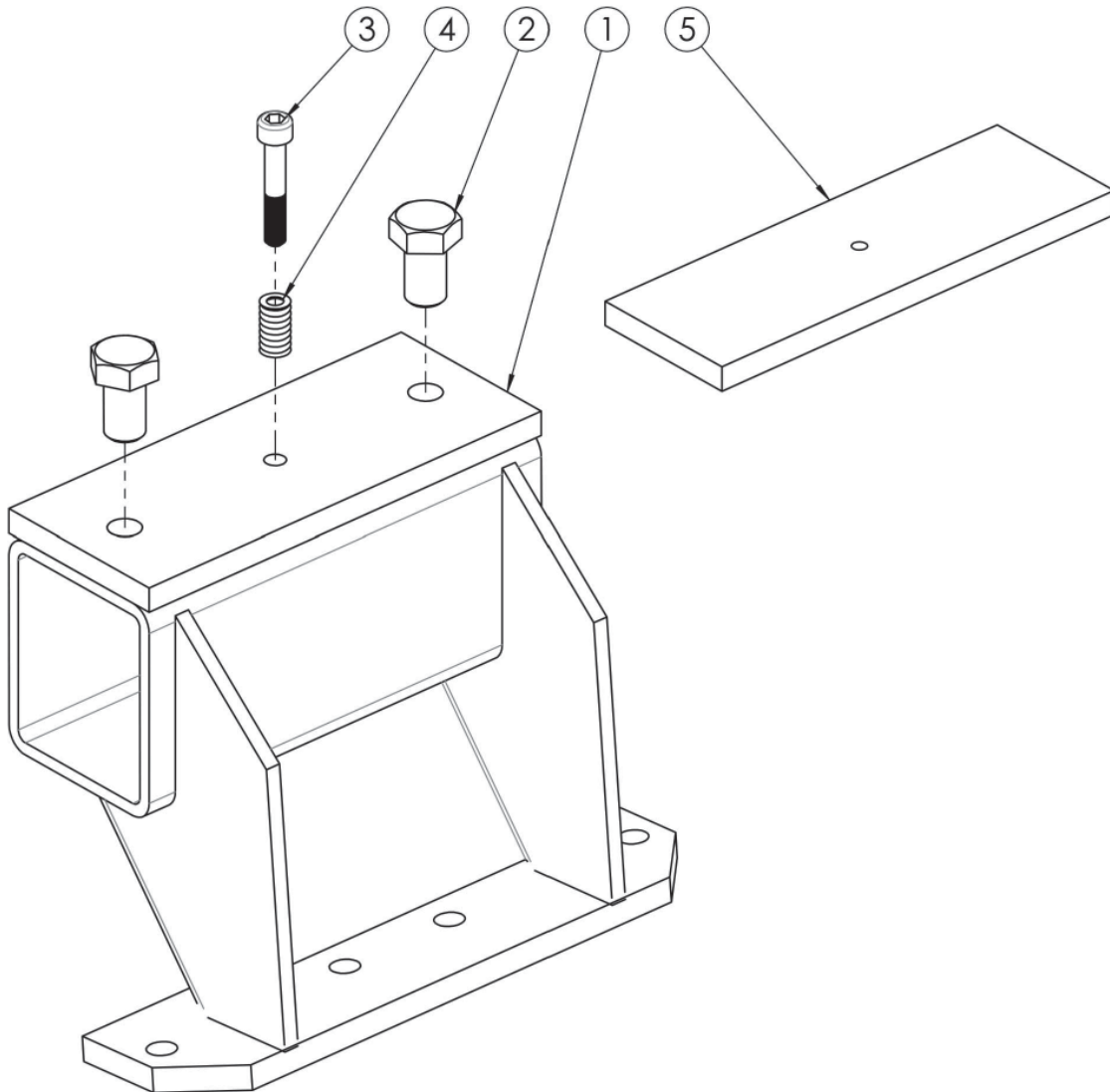


Ref.	Qty.	Part No.	Description	Assy.
1	1	0113 4409	Side Support Element	
2	2	0501 0007	Bolt TH M12 x 20 Zn	
3	1	0501 0942	Bolt CHC M6 x 35	
4	1	0501 1954	Compressing Spring	
5	1	0502 9543	Attachment Wedge	

## 2 SPARE PARTS - FRAMES

### 2.12 LOWER SUPPORT FOR SIDE ELEMENT - CODE 0105 0029

PL 3601

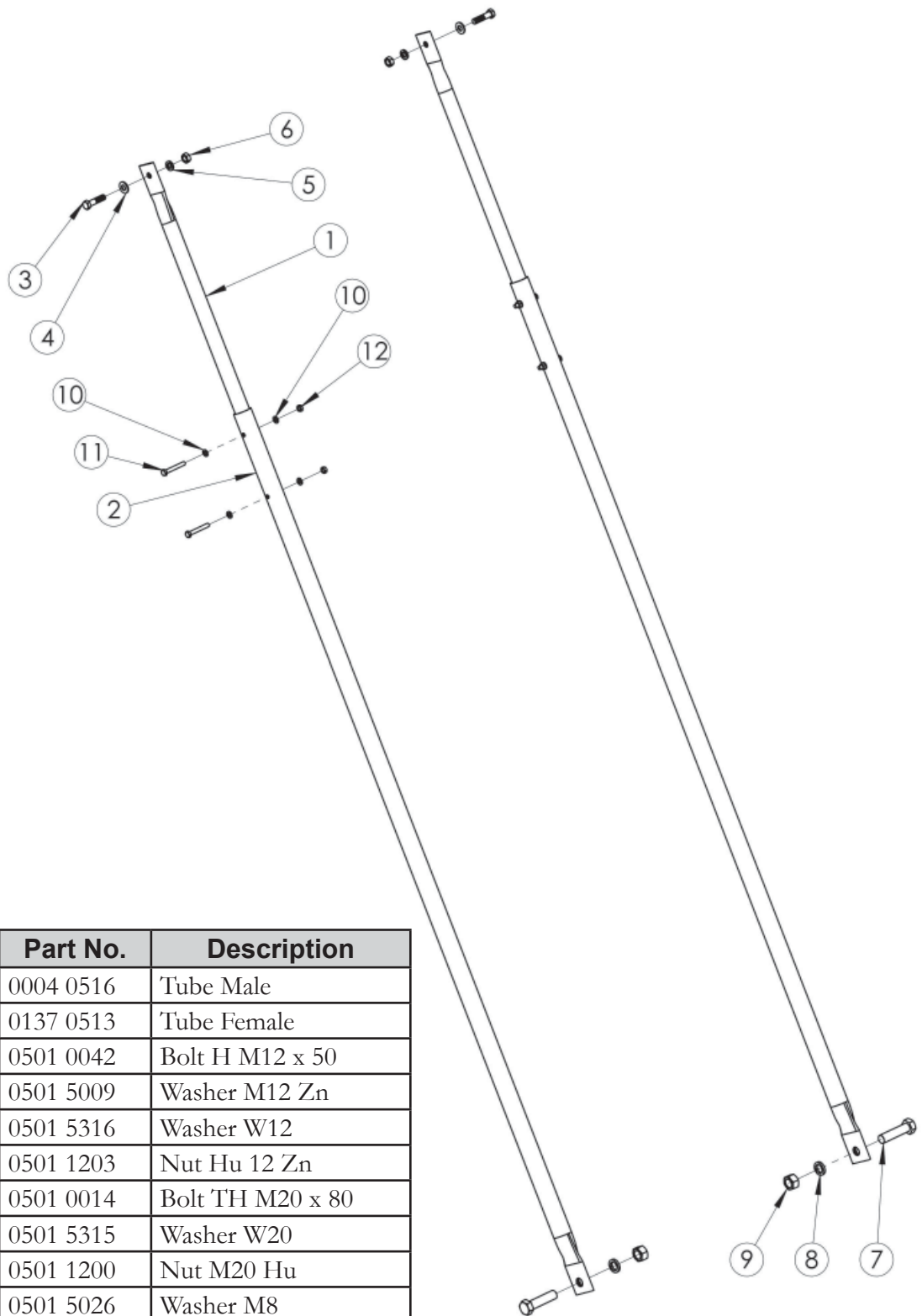


Ref.	Qty.	Part No.	Description	Assy.
1	1	0105 0034	Lateral Support	
2	2	0501 0007	Bolt TH M12 x 20 Zn	
3	1	0501 0942	Bolt CHC M6 x 35	
4	1	0501 1954	Compressing Spring	
5	1	0502 9543	Attachment Wedge	

## 2 SPARE PARTS - FRAMES

### 2.13 LONG BRACES - CODE 0137 0296

PL 4782

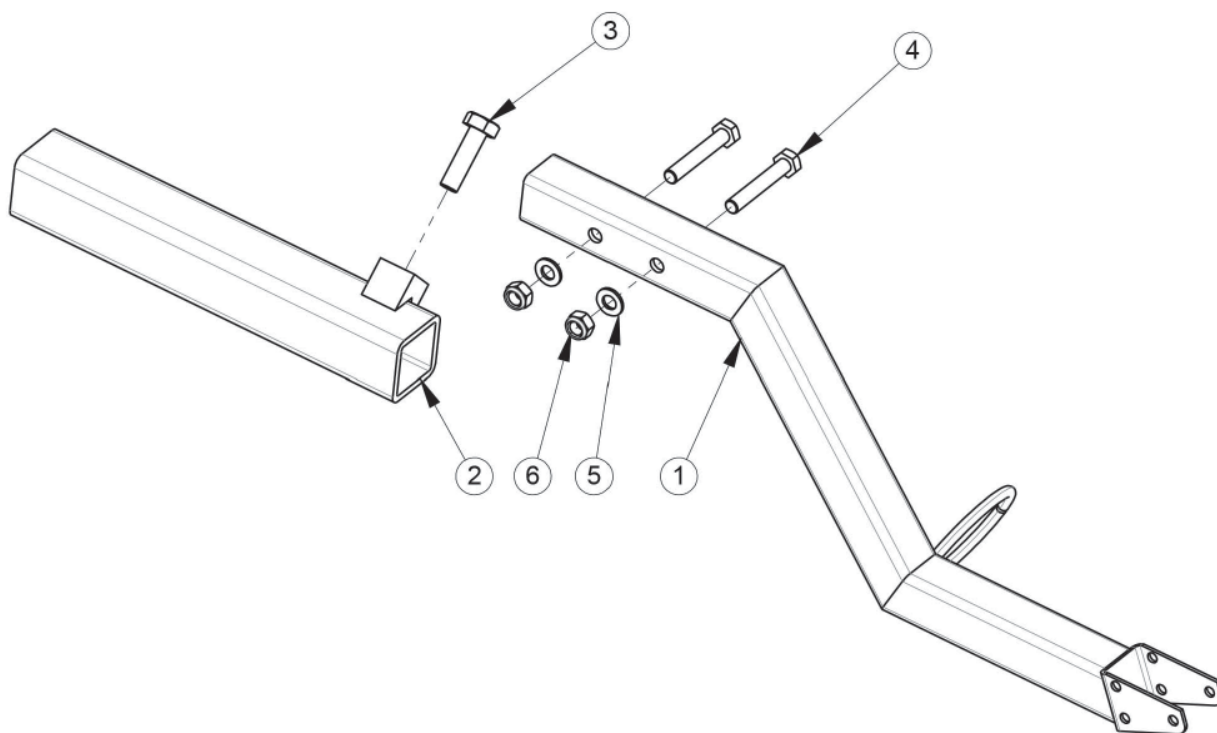


Ref.	Qty.	Part No.	Description
1	2	0004 0516	Tube Male
2	2	0137 0513	Tube Female
3	2	0501 0042	Bolt H M12 x 50
4	2	0501 5009	Washer M12 Zn
5	2	0501 5316	Washer W12
6	2	0501 1203	Nut Hu 12 Zn
7	2	0501 0014	Bolt TH M20 x 80
8	2	0501 5315	Washer W20
9	2	0501 1200	Nut M20 Hu
10	8	0501 5026	Washer M8
11	4	0501 0143	Bolt TH M8 x 60
12	4	0501 1306	Nut M8 Hu

## 2 SPARE PARTS - FRAMES

### 2.14 SUPPORT KIT FOR CONTROL LEVER - CODE 0000 2556

PL 5610

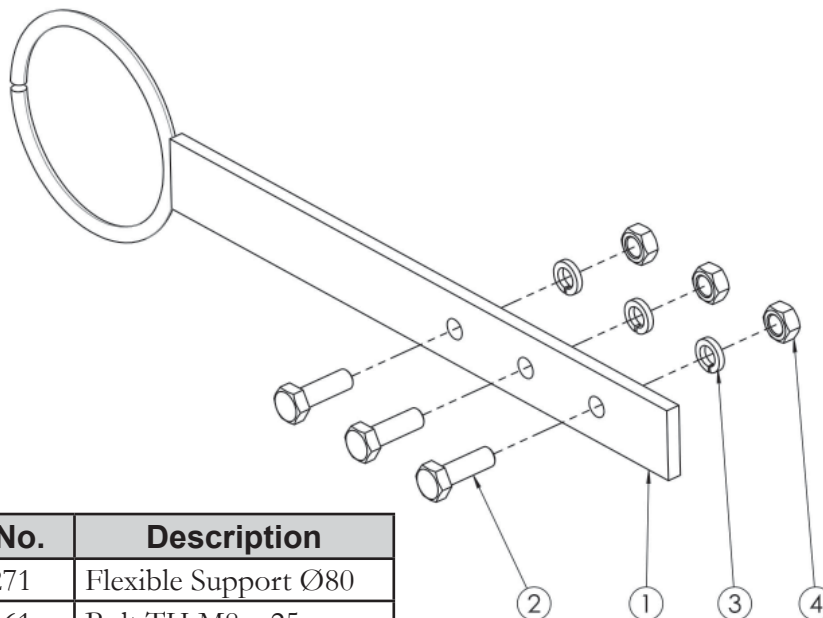


Ref.	Qty.	Part No.	Description
1	1	0502 9872	Support For Electric Control Handle
2	1	0073 0270	Fixation Support Female
3	1	0501 0139	Bolt TH M10 x 35
4	2	0501 0144	Bolt TH M8 x 50
5	2	0501 5026	Washer M8
6	2	0501 4306	Locknut M8

## 2 SPARE PARTS - FRAMES

### 2.15 FLEXIBLE SUPPORT KIT - CODE 0000 2552

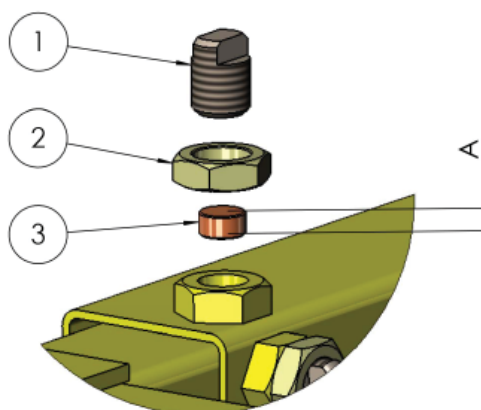
PL 5606



Ref.	Qty.	Part No.	Description
1	1	0073 0271	Flexible Support Ø80
2	3	0501 0161	Bolt TH M8 x 25
3	3	0501 5317	Washer W8
4	3	0501 1306	Nut M8 Hu

### PLAY ADJUSTMENT ON SLIDING TUBE

PL 4365

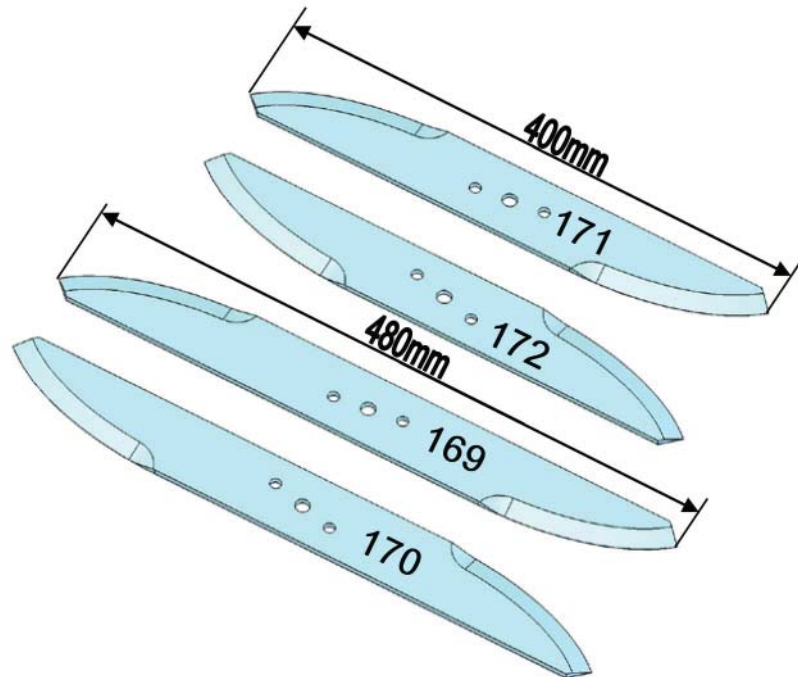


Ref.	Part No.	Description
1	0501 0814	Screw M20
2	0501 1208	Nut HM20 Zn
3	0501 4315	Plastic Plug - A = 4 mm
	0501 4309	Plastic Plug - A = 8 mm
	0501 4316	Plastic Plug - A = 12 mm
	0501 4314	Plastic Plug - A = 16 mm

## 2 SPARE PARTS - BLADES

### 2.16 BLADES - STANDARD STAINLESS STEEL (PATENTED COLLARD)

PL 3537



Part No.	Matter	Rotation	Length
0503 0171	Stainless Steel	R/H	400 mm
0503 0172	Stainless Steel	L/H	400 mm
0503 0169	Stainless Steel	R/H	480 mm
0503 0170	Stainless Steel	L/H	480 mm

**SPECIAL NOTE:** With every stainless steel blade ordered it is recommended that the following also be ordered:

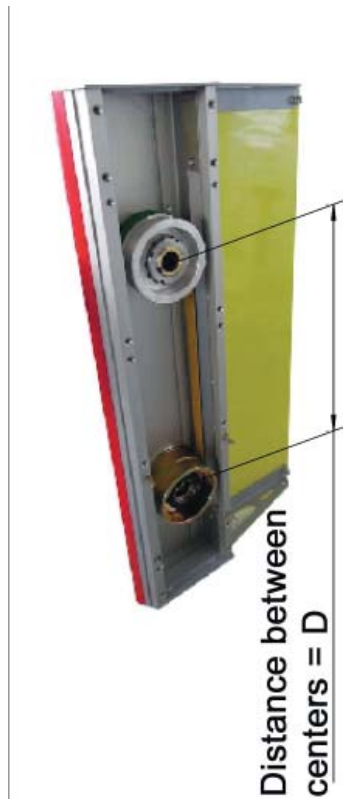
1 ea. 05030069      Mounting hardware for 1 blade consisting of:

1 ea. 05014311      Locknut M10  
 1 ea. 05017926      Plug  
 2 ea. 05011861      Screw Tensilok M8 x 12

## 2 SPARE PARTS - BELTS

### 2.17 BELTS

PL 4295



	D=300 mm Upper Horizontal Element	D=400 mm Vertical Element
Length:	842 mm	1039 mm
Ref. Belt:	0502 8596	0502 8597

**SPECIAL NOTE:** The belt reference is printed on each face of the belt.

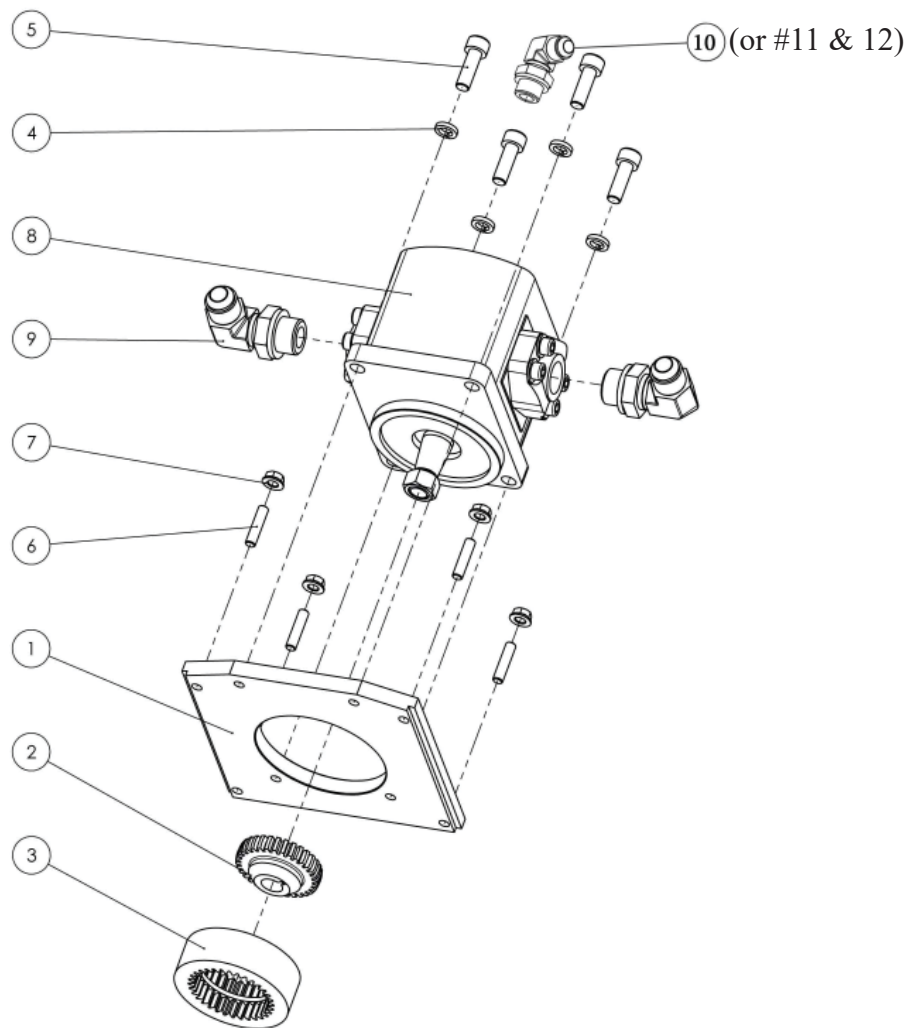
To install the belt, it is recommended that you use the specific COLLARD tool - 0105 0157



### 3 CUTTING ELEMENTS

#### 3.1 HYDRAULIC MOTOR 12CC - CODE 0105 0132

PL 3564



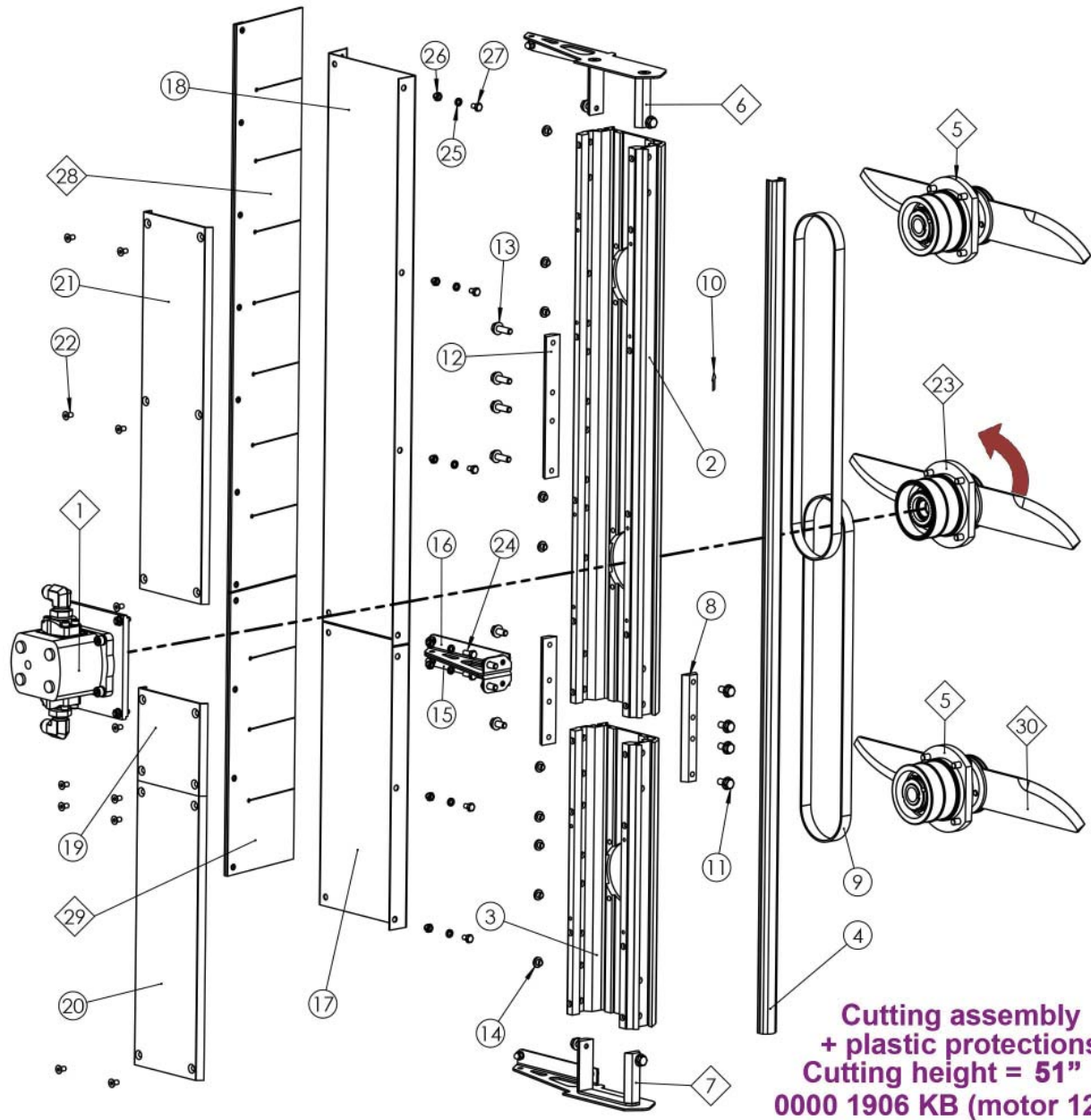
Ref.	Qty.	Part No.	Description	Assy.
1	1	01050039	Motor Plate	
2	1	01050021	Pinion With Cone	
3	1	01050024	Coupling	
4	4	05015317	Washer W8	
5	4	05010903	Screw CHC M8 x 25	
6	4	05011659	Stud M6 x 25	
7	4	05011215	Nut Tensilok M6 Zn	
8	1	05021061	Hydraulic Motor 12 cc	
9	2	05006578	Angle MJ 3/4 - MG 1/2 Cyl. w/Counter Nut	
10	1	05006577	Elbow w/Nut 90° - MJ 9/16 - MG 1/4 (or #12)	
11	1	05007816	Adaptor MJ 9/16 - MG 8 - 13 (not shown)	
12	1	05007316	Tee JIC #6 M - F - M (not shown)	
	1	05021128	Seal Kit (not shown)	



### 3 CUTTING ELEMENTS

#### 3.2 CUTTING ASSEMBLY LH - CODE 0000 1906 KB

PL 5320



### 3 CUTTING ELEMENTS

#### 3.2 CUTTING ASSEMBLY LH - CODE 0000 1906 KB

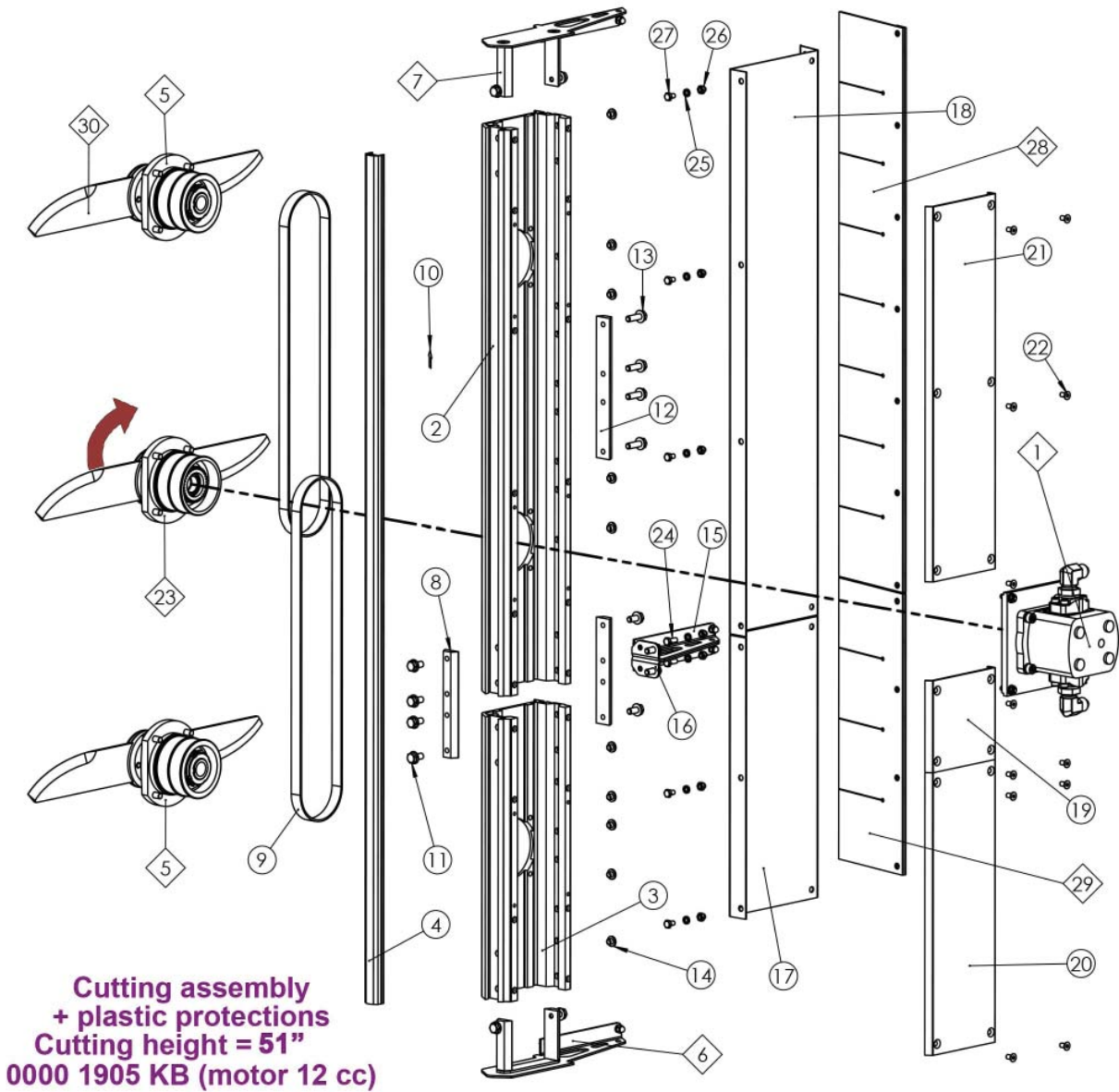
PL 5320

Ref.	Qty.	Part No.	Description	Assy.
1	1	01050132	Complete Motor 12 cc	PL 3564 - Pg 20
2	1	01050046	Aluminum Section 800 mm	
3	1	01050048	Aluminum Section 400 mm	
4	1	01221200	Leading Edge 1200 mm	
5	2	01050129	Blade Assembly Long L/H	PL 3543 - Pg 34
6	1	01050018	Complete Closing w/Screws	PL 3542 - Pg 28
7	1	01050019	Complete Closing w/Screws	PL 3542 - Pg 28
8	2	01050077	Junction: L = 150 mm	
9	2	05028597	Belt S 250 17 x 1039 mm	
10	1	05016072	Adhesive Sticker	
11	6	05011877	Screw Tensilok M8 x 16	
12	1	00420016	Junction L = 200 mm Mounting Plate	
13	4	05011876	Screw Tensilok M8 x 25 ZN	
14	10	05017891	Plastic Plug	
15	1	01050008	Case Reinforcement w/Screws L/H	
16	1	01050009	Case Reinforcement w/Screws R/H	
17	1	01050097	Blade Case 400 mm	
18	1	01050099	Blade Case 800 mm	
19	1	01050090	Cover 130 mm	
20	1	01050093	Cover 400 mm	
21	1	01050094	Cover 530 mm	
22	14	05010537	Screw FHC M6 x 12	
23	1	01050123	Motor Blade Assembly Short L/H	PL 3555 - Pg 36
24	2	05010152	Screw TH M6 x 16	
25	7	05015318	Washer W6	
26	7	05011234	Nut M6	
27	5	05010020	Screw TH M6 x 10	
28	1	00002079	Plastic Protection 800	PL 3665 - Pg 41
29	1	00002075	Plastic Protection 400	PL 3665 - Pg 41
30	3	05030170	Stainless Steel Blade 480 mm EL L/H	PL 3537 - Pg 18

### 3 CUTTING ELEMENTS

#### 3.3 CUTTING ASSEMBLY RH - CODE 0000 1905 KB

PL 5321



### 3 CUTTING ELEMENTS

#### 3.3 CUTTING ASSEMBLY RH - CODE 0000 1905 KB

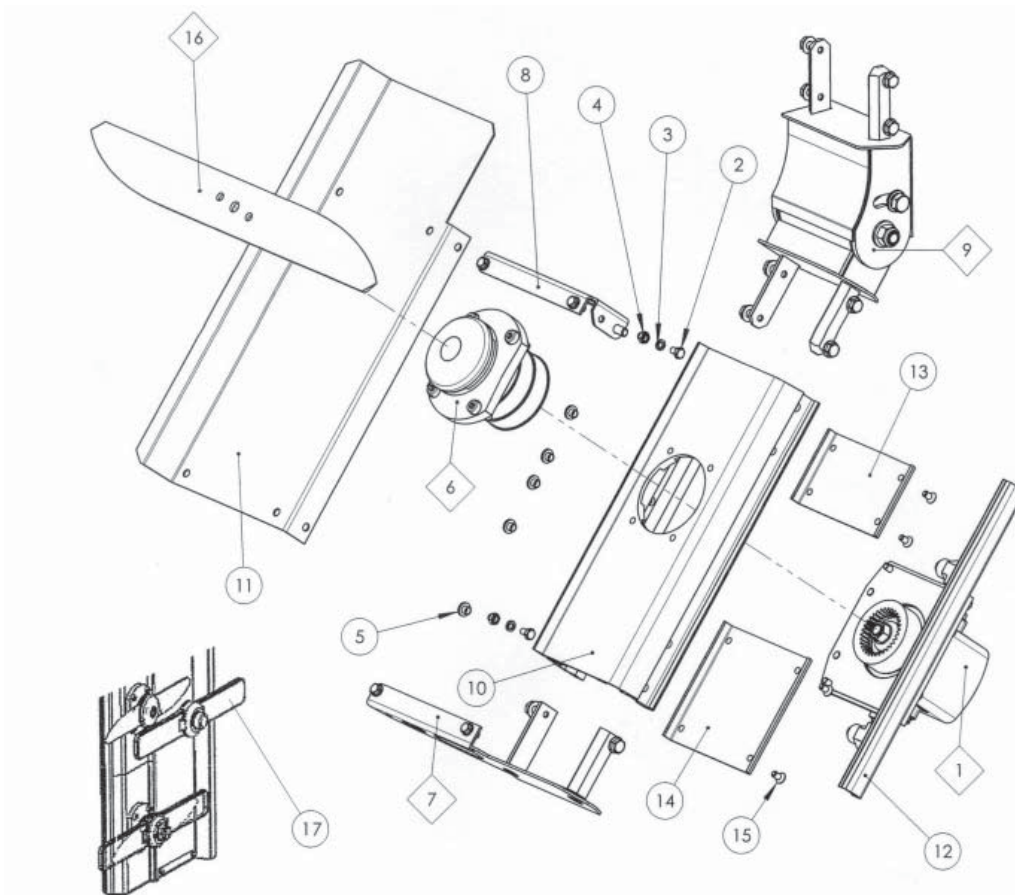
PL 5321

Ref.	Qty.	Part No.	Description	Assy.
1	1	01050132	Complete Motor 12 cc	PL 3564 - Pg 20
2	1	01050046	Aluminum Section 800 mm	
3	1	01050048	Aluminum Section 400 mm	
4	1	01221200	Leading Edge 1200 mm	
5	2	01050130	Blade Assembly Long R/H	PL 3540 - Pg 33
6	1	01050018	Complete Closing w/Screws	PL 3542 - Pg 28
7	1	01050019	Complete Closing w/Screws	PL 3542 - Pg 28
8	2	01050077	Junction: L = 150 mm	
9	2	05028597	Belt S 250 17 x 1039 mm	
10	1	05016072	Adhesive Sticker	
11	6	05011877	Screw Tensilok M8 x 16	
12	1	00420016	Junction L = 200 mm Mounting Plate	
13	4	05011876	Screw Tensilok M8 x 25 ZN	
14	10	05017891	Plastic Plug	
15	1	01050008	Case Reinforcement w/Screws L/H	
16	1	01050009	Case Reinforcement w/Screws R/H	
17	1	01050097	Blade Case 400 mm	
18	1	01050099	Blade Case 800 mm	
19	1	01050090	Cover 130 mm	
20	1	01050093	Cover 400 mm	
21	1	01050094	Cover 530 mm	
22	14	05010537	Screw FHC M6 x 12	
23	1	01050124	Motor Blade Assembly Short R/H	PL 3541 - Pg 35
24	2	05010152	Screw TH M6 x 16	
25	7	05015318	Washer W6	
26	7	05011234	Nut M6	
27	5	05010020	Screw TH M6 x 10	
28	1	00002079	Plastic Protection 800	PL 3665 - Pg 41
29	1	00002075	Plastic Protection 400	PL 3665 - Pg 41
30	3	05030169	Stainless Steel Blade 480 mm EL R/H	PL 3537 - Pg 18

### 3 CUTTING ELEMENTS

#### 3.4 SKIRTING ELEMENT RH - CODE 0000 2360

PL 4712

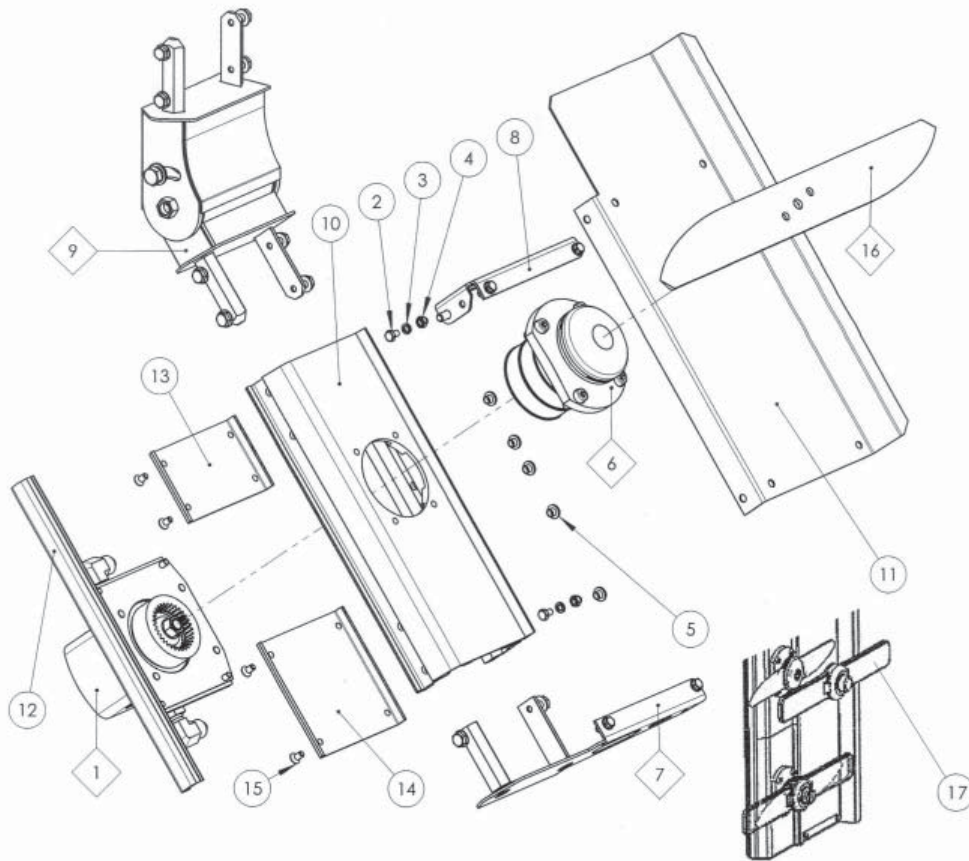


Ref.	Qty.	Part No.	Description	Assy.
1	1	01050132	Motor 12 cc	PL 3564 - Pg 20
2	2	05010020	Screw TH M6 x 10	
3	2	05015318	Washer W6	
4	2	05011234	Nut M6	
5	5	05017891	Plastic Obturator	
6	1	01050124	Motor Blade Assembly Short RH	PL 3541 - Pg 35
7	1	01050018	Complete Closing With Screws	PL 3542 - Pg 28
8	1	01050009	Case Reinforcement With Screws RH	
9	1	00940250	Articulation - Motor Skirting Element	PL 4714 - Pg 27
10	1	01050331	Aluminum Section 350 mm	
11	1	01050332	Blade Case 350 mm - Skirting Element	
12	1	01220350	Leading Edge 350 mm	
13	1	01050074	Cover 80 mm	
14	1	01050090	Cover 130 mm	
15	8	05010537	Screw FHC M6 x 12	
16	1	05030169	Stainless Steel Blade 480 mm EL RH	
17	1	05030600	Plastic Blade Guard	

### 3 CUTTING ELEMENTS

#### 3.5 SKIRTING ELEMENT LH - CODE 0000 2361

PL 4713

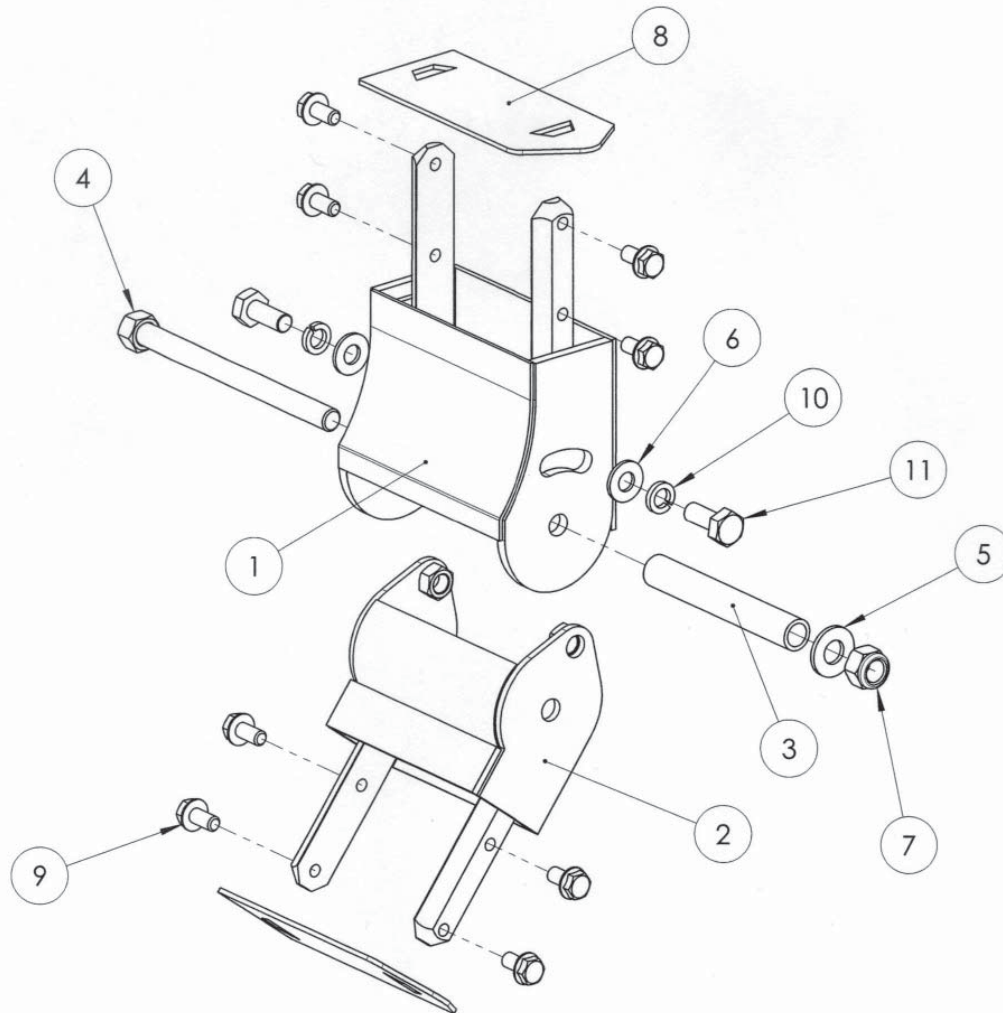


Ref.	Qty.	Part No.	Description	Assy.
1	1	01050132	Motor 12 cc	PL 3564 - Pg 20
2	2	05010020	Screw TH M6 x 10	
3	2	05015318	Washer W6	
4	2	05011234	Nut M6	
5	5	05017891	Plastic Obturator	
6	1	01050123	Motor Blade Assembly Short LH	PL 3555 - Pg 36
7	1	01050019	Complete Closing With Screws	PL 3542 - Pg 28
8	1	01050008	Case Reinforcement With Screws LH	
9	1	00940250	Articulation - Motor Skirting Element	PL 4714 - Pg 27
10	1	01050331-BIS	Aluminum Section 350 mm	
11	1	01050332-BIS	Blade Case 350 mm - Skirting Element	
12	1	01220350	Leading Edge 350 mm	
13	1	01050074	Cover 80 mm	
14	1	01050090	Cover 130 mm	
15	8	05010537	Screw FHC M6 x 12	
16	1	05030170	Stainless Steel Blade 480 mm EL LH	
17	1	05030600	Plastic Blade Guard	

### 3 CUTTING ELEMENTS

#### 3.6 ARTICULATION SKIRTING ELEMENT - CODE 0094 0250

PL 4714

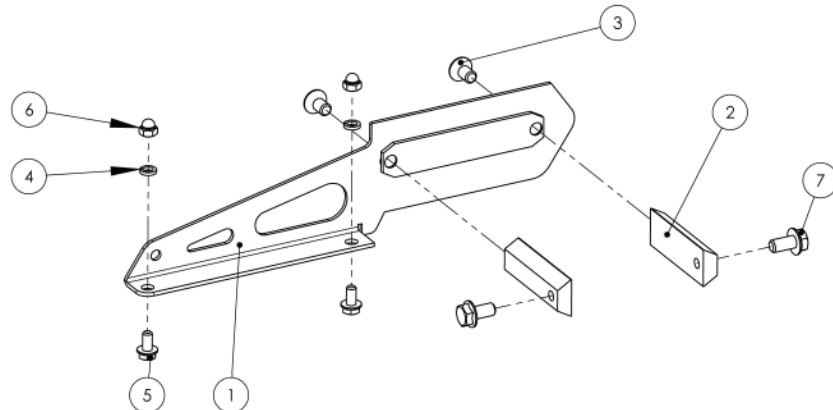


Ref.	Qty.	Part No.	Description	Assy.
1	1	00940248	Upper Element	
2	1	00940249	Lower Element	
3	1	00940229	Long Spacer	
4	1	00940211	Roller Axle	
5	1	05015009	Washer M12	
6	2	05015025	Washer M10 Zn	
7	1	05014300	Locknut M12	
8	2	00940251	Closing Element	
9	8	05011877	Screw Tensilok M8 x 16	
10	2	05015313	Washer W 10	
11	2	05010024	Screw TH M10 x 25	

### 3 CUTTING ELEMENTS

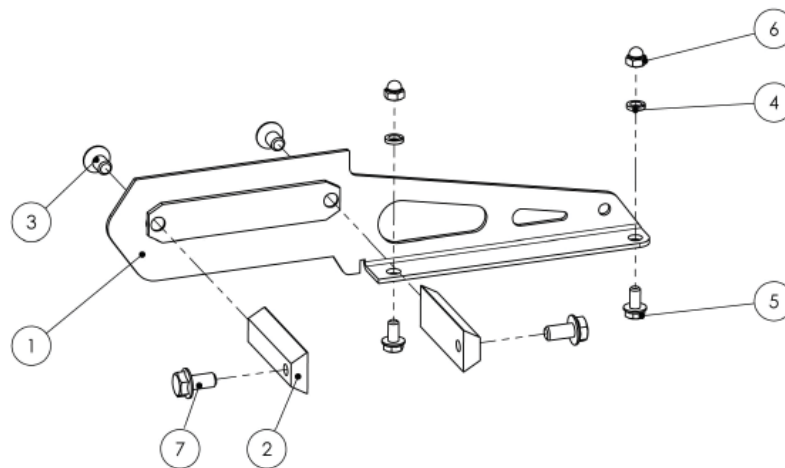
#### 3.7 COMPLETE CLOSING - CODE 0105 0018

PL 3542



Ref.	Qty.	Part No.	Description	Assy.
1	1	01050017	Closing	
2	2	01050015	Link Part	
3	2	05010501	Screw FHC M8 x 15	
4	2	05015318	Washer W6	
5	2	05011851	Screw Tensilok M6 x 12 Zn	
6	2	05011234	Nut M6	
7	2	05011877	Screw Tensilok M8 x 16	

#### COMPLETE CLOSING (SYMMETRICAL) - CODE 01050019



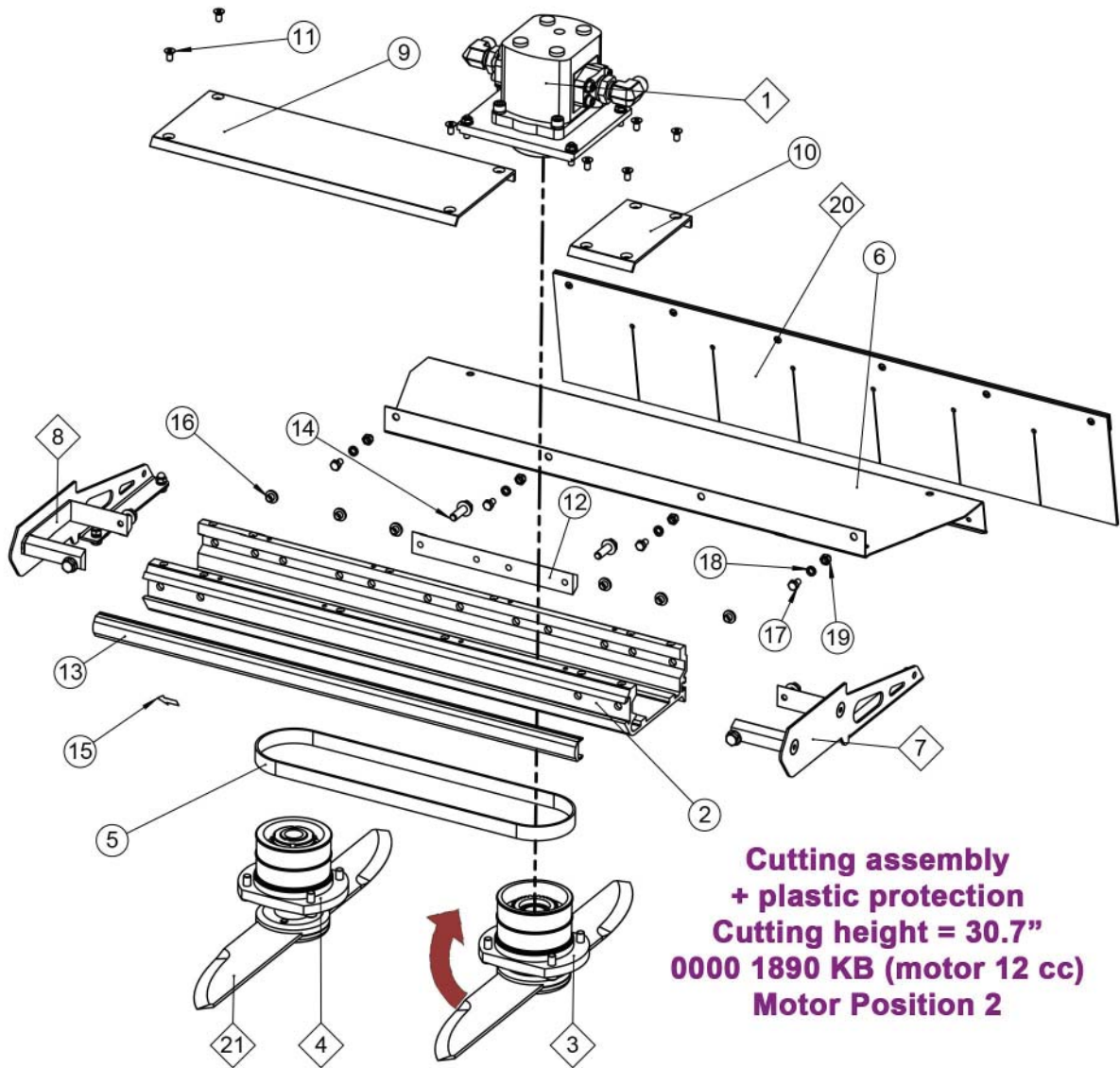
Ref.	Qty.	Part No.	Description	Assy.
1	1	01050017-BIS	Closing	
2	2	01050015	Link Part	
3	2	05010501	Screw FHC M8 x 15	
4	2	05015318	Washer W6	
5	2	05011851	Screw Tensilok M6 x 12 Zn	
6	2	05011234	Nut M6	
7	2	05011877	Screw Tensilok M8 x 16	



### 3 CUTTING ELEMENTS

#### 3.8 30.7" CUTTING ELEMENT - CODE 0000 1890 KB

PL 5301



**Cutting assembly  
+ plastic protection  
Cutting height = 30.7"  
0000 1890 KB (motor 12 cc)  
Motor Position 2**

### 3 CUTTING ELEMENTS

#### 3.8 30.7" CUTTING ELEMENT - CODE 0000 1890 KB

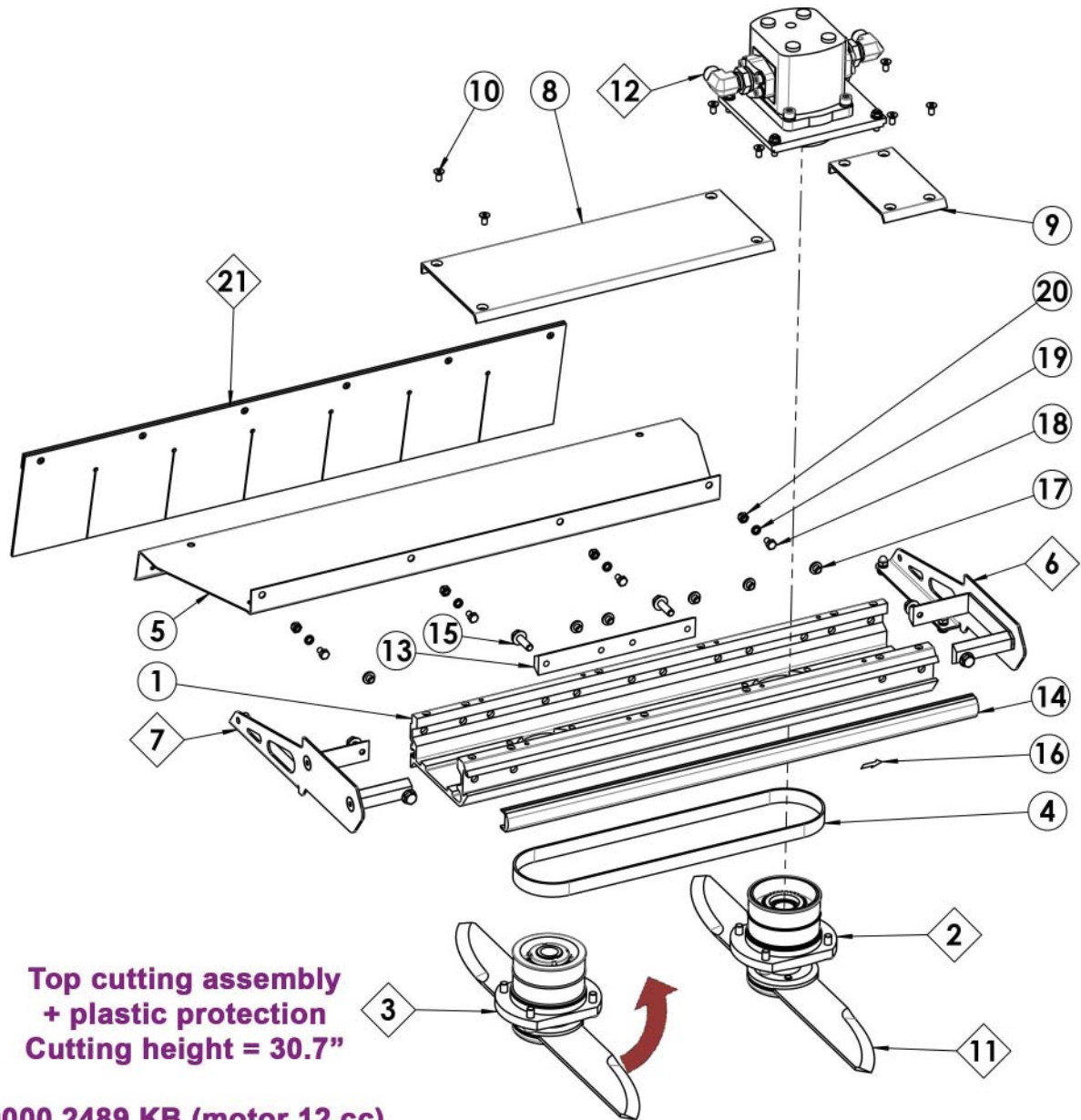
PL 5301

Ref.	Qty.	Part No.	Description	Assy.
1	1	01050132	Motor 12 cc	PL 3564 - Pg 20
2	1	01050045	Aluminum Section 600 mm	
3	1	01050124	Motor Blade Assembly Short R/H	PL 3541 - Pg 35
4	1	01050130	Blade Assembly Long R/H	PL 3540 - Pg 33
5	1	05028596	Belt S250 17 x 842 mm	
6	1	01050096	Blade Case 690 mm	
7	1	01050018	Complete Closing With Screws	PL 3542 - Pg 28
8	1	01050019	Complete Closing With Screws	PL 3542 - Pg 28
9	1	01050091	Cover 380 mm	
10	1	01050074	Cover 80 mm	
11	8	05010537	Screw FHC M6 x 12	
12	1	00420016	Junction L = 200 mm	
13	1	01220600	Leading Edge 600 mm	
14	2	05011876	Screw Tensilok M8 x 25 Zn	
15	1	05016072	Adhesive Sticker	
16	6	05017891	Plastic Obturator	
17	4	05010020	Screw TH M6 x 10	
18	4	05015318	Washer W6	
19	4	05011234	Nut M6	
20	1	00002067	Plastic Protection 690	PL 3665 - Pg 41
21	2	05030169	Stainless Steel Blade 480 mm EL R/H	PL 3537 - Pg 18

### 3 CUTTING ELEMENTS

#### 3.9 30.7" CUTTING ELEMENT - CODE 0000 2489 KB

PL 5735



**Top cutting assembly  
+ plastic protection  
Cutting height = 30.7"**

**0000 2489 KB (motor 12 cc)  
Position 1**

### 3 CUTTING ELEMENTS

#### 3.9 30.7" CUTTING ELEMENT - CODE 0000 2489 KB

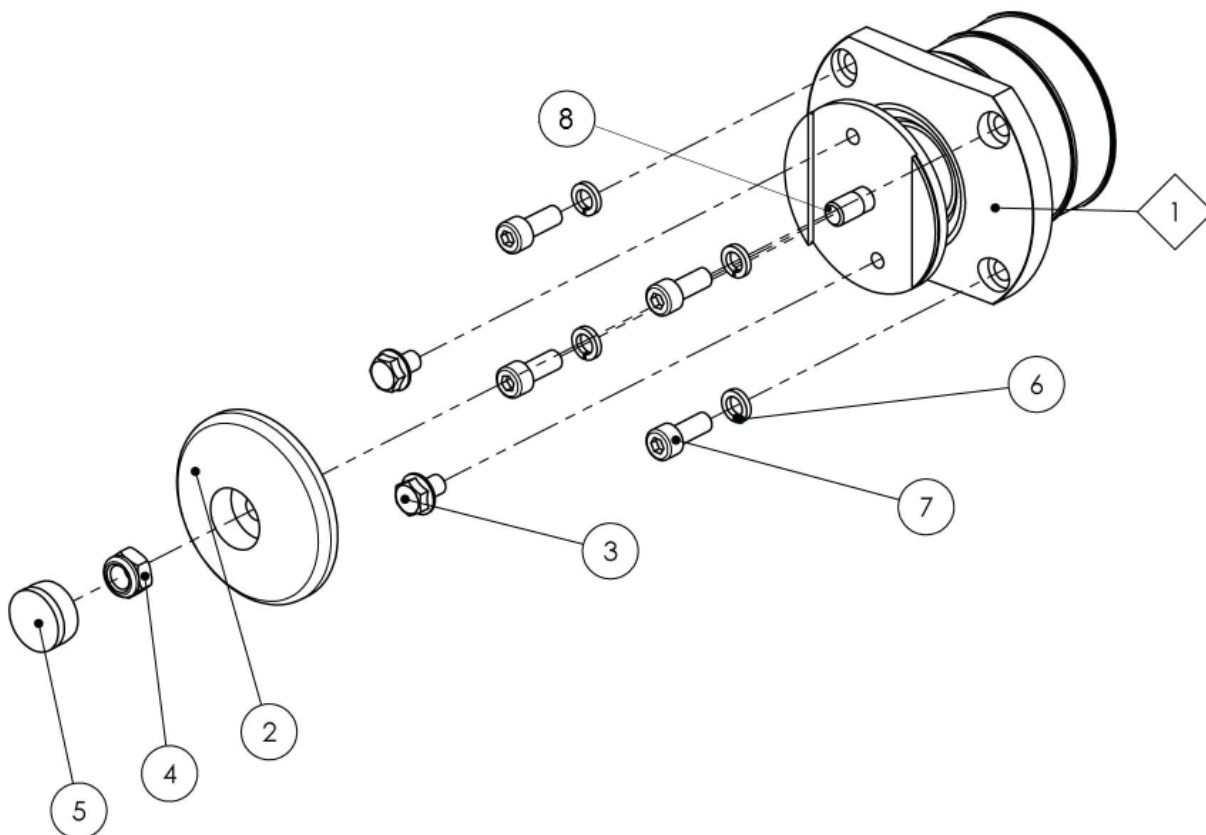
PL 5735

Ref.	Qty.	Part No.	Description	Assy.
1	1	01050045	Aluminum Section 600 mm	
2	1	01050125	Motor Blade Assembly Long L/H	PL 3555 - Pg 36
3	1	01050127	Blade Assembly Short L/H	PL 3543 - Pg 34
4	1	05028596	Belt S250 17 x 842 mm	
5	1	01050096	Blade Case 690 mm	
6	1	01050018	Complete Closing w/Screws	PL 3542 - Pg 28
7	1	01050019	Complete Closing w/Screws	PL 3542 - Pg 28
8	1	01050091	Cover 380 mm	
9	1	01050074	Cover 80 mm	
10	8	05010537	Screw FHC M6 x 12	
11	2	05030170	Steel Blade 480 mm EL L/H	PL 3537 - Pg 18
12	1	01050132	Complete Motor 12 cc	PL 3564 - Pg 20
13	1	00420016	Junction: L = 200 mm	
14	1	01220600	Leading Edge 600 mm	
15	2	05011876	Screw Tensilok M8 x 25 ZN	
16	1	05016072	Adhesive Sticker	
17	6	05017891	Plastic Obturator	
18	4	05010020	Screw TH M6 x 10	
19	4	05015318	Washer W6	
20	4	05011234	Nut M6	
21	1	00002067	Plastic Protection 690	PL 3665 - Pg 41

### 3 CUTTING ELEMENTS

#### 3.10 BLADE ASSEMBLY LONG RH - CODE 0105 0130

PL 3540

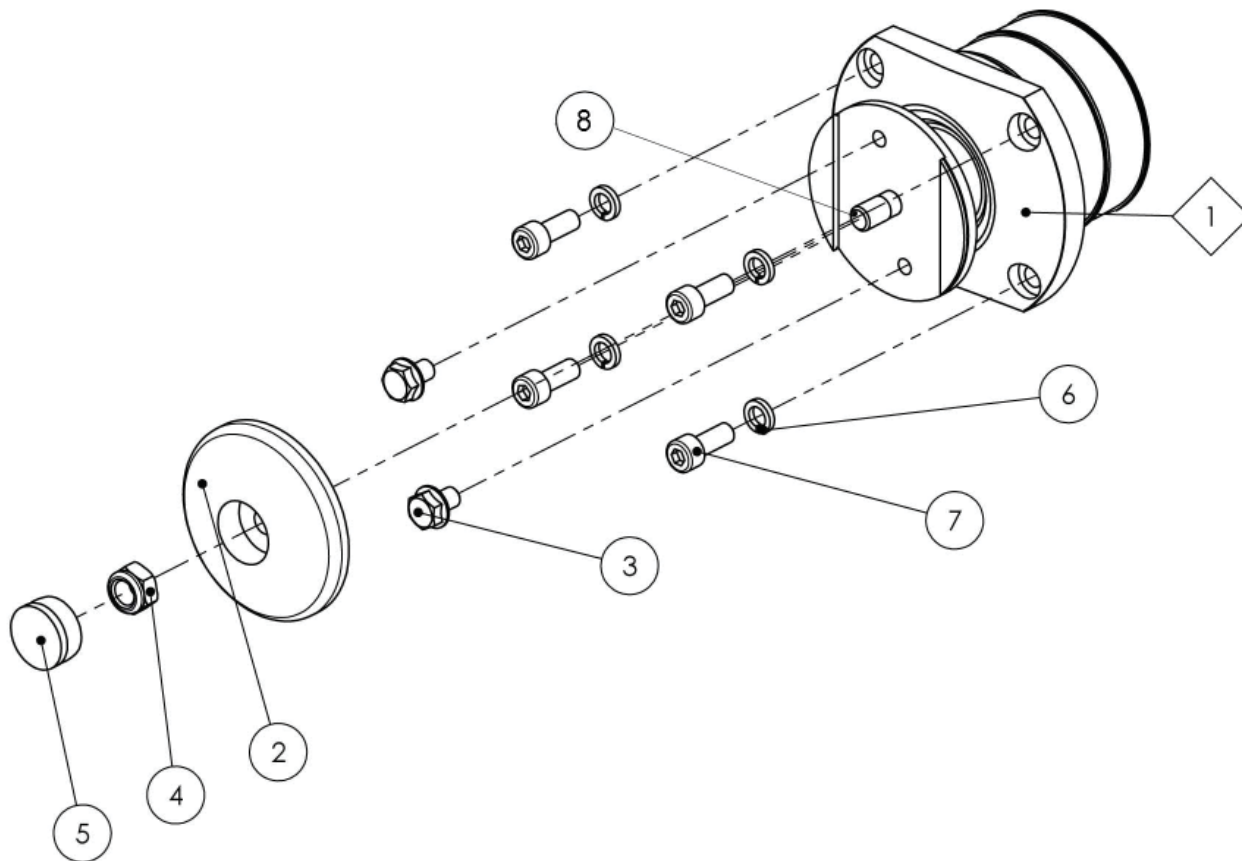


Ref.	Qty.	Part No.	Description	Assy.
1	1	01050072	Blade Housing Assembly Long R/H	PL 3556 - Pg 39
2	1	01050031	Cup	
3	2	05011861	Screw Tensilok M8 x 12 Zn	
4	1	05014311	Locknut M10	
5	1	05017926	Cap Ø26 mm	
6	4	05015317	Washer W8	
7	4	05010902	Screw CHC M8 x 20	
8	1	05011664	Stud M10 x 30	

### 3 CUTTING ELEMENTS

#### 3.11 BLADE ASSEMBLY LONG LH - CODE 0105 0129

PL 3543

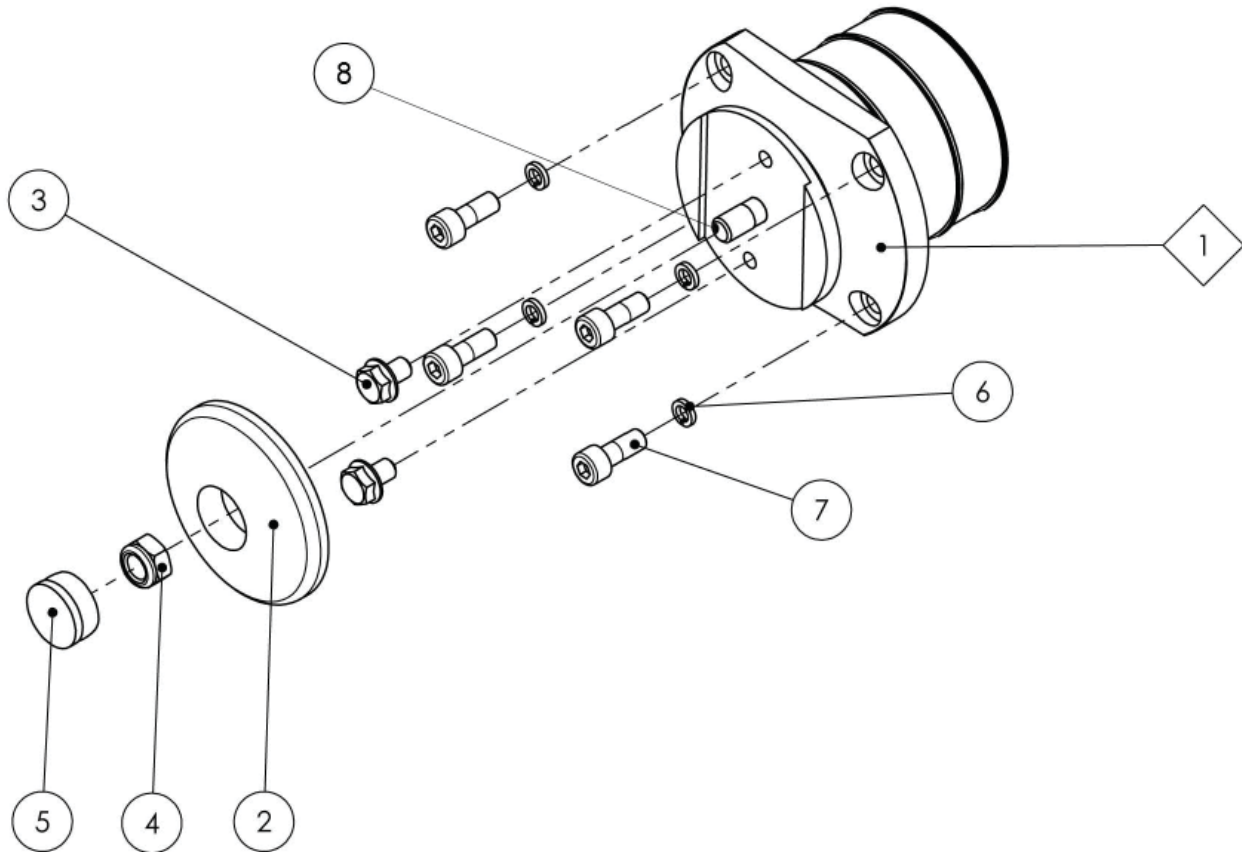


Ref.	Qty.	Part No.	Description	Assy.
1	1	01050071	Blade Housing Assembly Long L/H	PL 3558 - Pg 40
2	1	01050031	Cup	
3	2	05011861	Screw Tensilok M8 x 12 Zn	
4	1	05014311	Locknut M10	
5	1	05017926	Cap Ø26 mm	
6	4	05015317	Washer W8	
7	4	05010902	Screw CHC M8 x 20	
8	1	05011664	Stud M10 x 30	

### 3 CUTTING ELEMENTS

#### 3.12 MOTOR BLADE ASSY SHORT RH - CODE 0105 0124

PL 3541

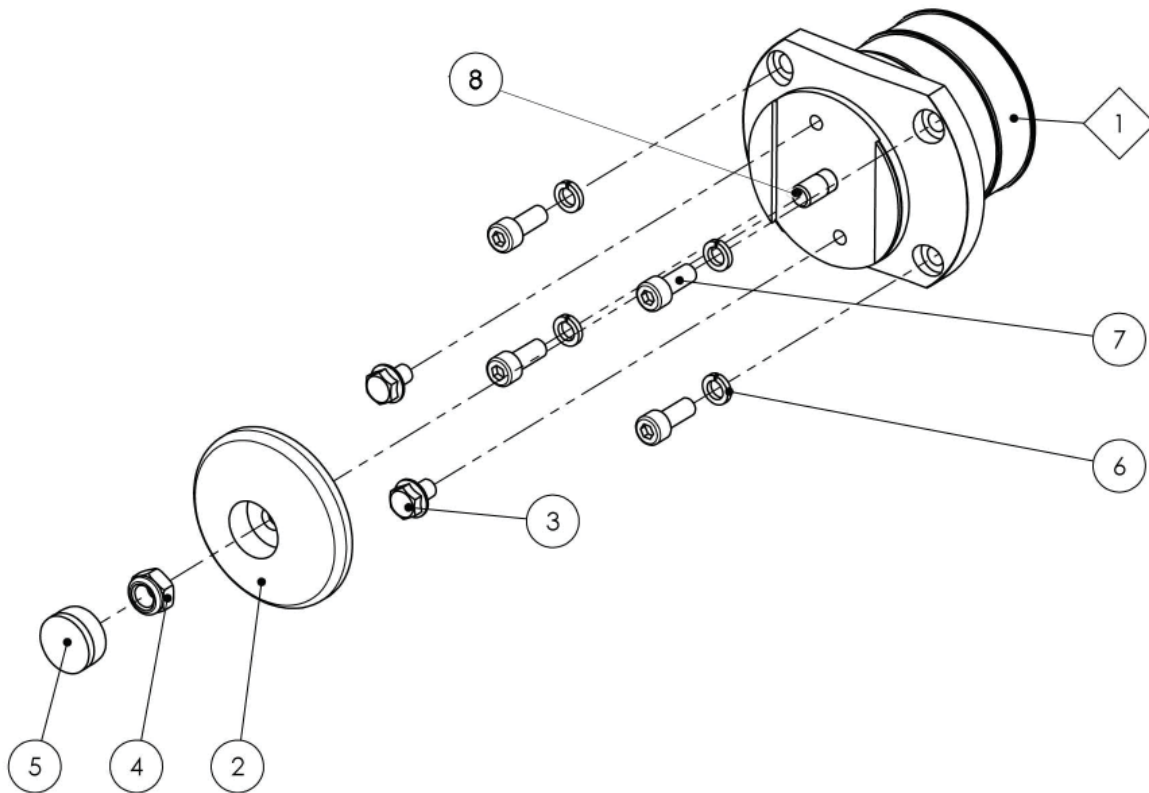


Ref.	Qty.	Part No.	Description	Assy.
1	1	01050066	Motor Blade Hsg Assy Short R/H	PL 3557 - Pg 37
2	1	01050031	Cup	
3	2	05011861	Screw Tensilok M8 x 12 Zn	
4	1	05014311	Locknut M10	
5	1	05017926	Cap Ø26 mm	
6	4	05015317	Washer W8	
7	4	05010902	Screw CHC M8 x 20	
8	1	05011664	Stud M10 x 30	

### 3 CUTTING ELEMENTS

#### 3.13 MOTOR BLADE ASSY SHORT LH - CODE 0105 0123

PL 3555



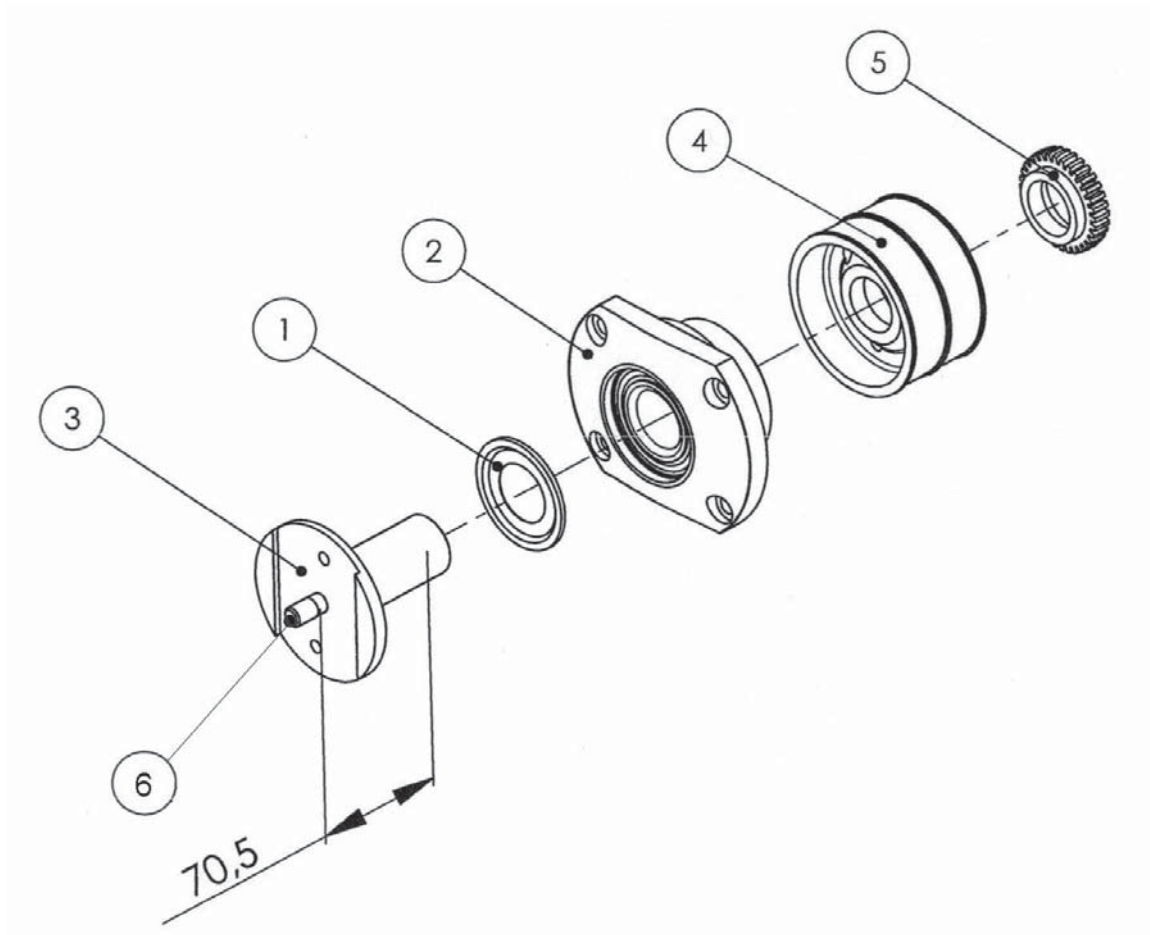
Ref.	Qty.	Part No.	Description	Assy.
1	1	01050065	Motor Blade Hsg Assy Short LH	PL 3559 - Pg 38
2	1	01050031	Cup	
3	2	05011861	Screw Tensilok M8 x 12 Zn	
4	1	05014311	Locknut M10	
5	1	05017926	Cap Ø26 mm	
6	4	05015317	Washer W8	
7	4	05010902	Screw CHC M8 x 20	
8	1	05011664	Stud M10 x 30	



### 3 CUTTING ELEMENTS

#### 3.14 MOTOR BLADE HSG. ASSY SHORT RH - CODE 0105 0066

PL 3557

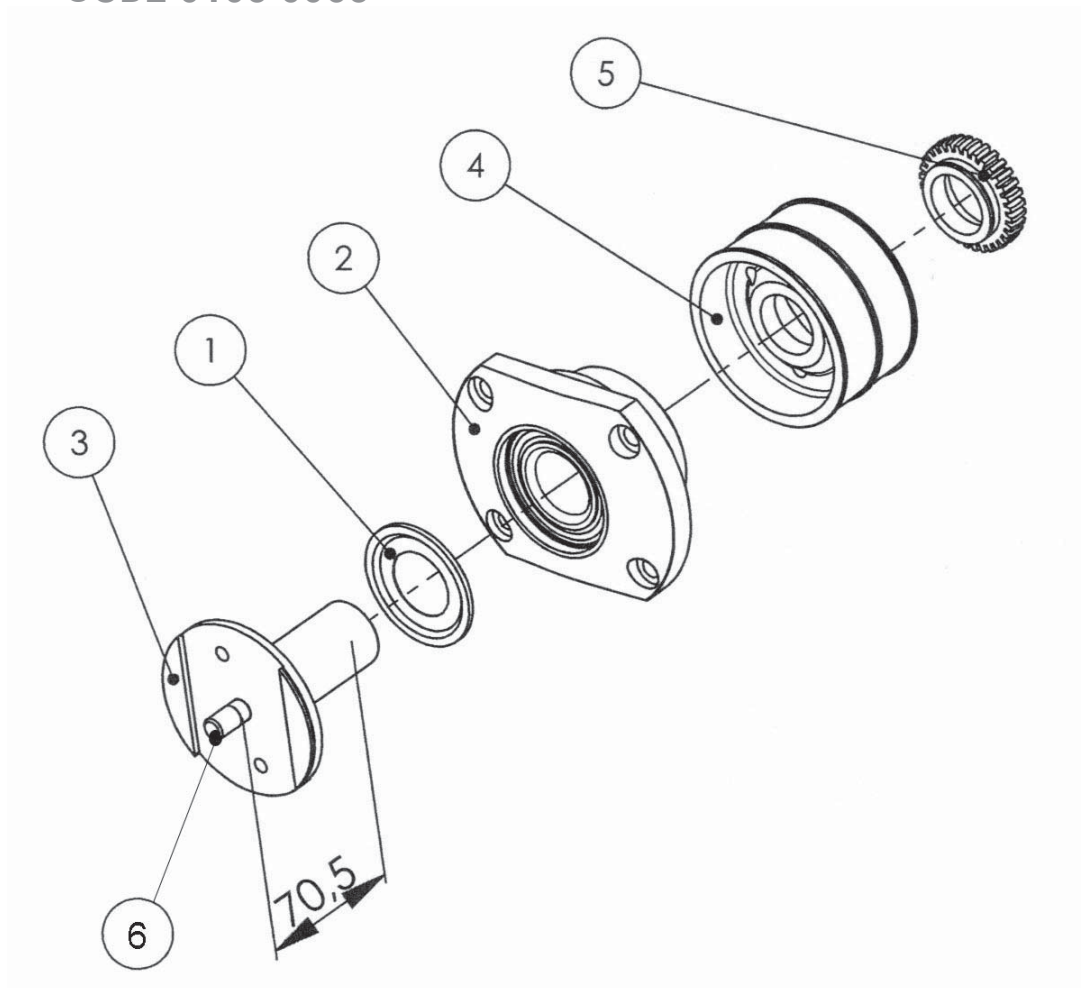


Ref.	Qty.	Part No.	Description	Assy.
1	1	05000038	Ring NILOS	
2	1	01050064	Blade Housing	
3	1	01050056	Short Shaft Motor, Blade RH	
4	1	01050023	Motor Pulley	
5	1	01050022	Threaded Nut On Right	
6	1	05011664	Stud M10 x 30	

### 3 CUTTING ELEMENTS

#### 3.15 MOTOR BLADE HSG. ASSY SHORT LH - CODE 0105 0065

PL 3559

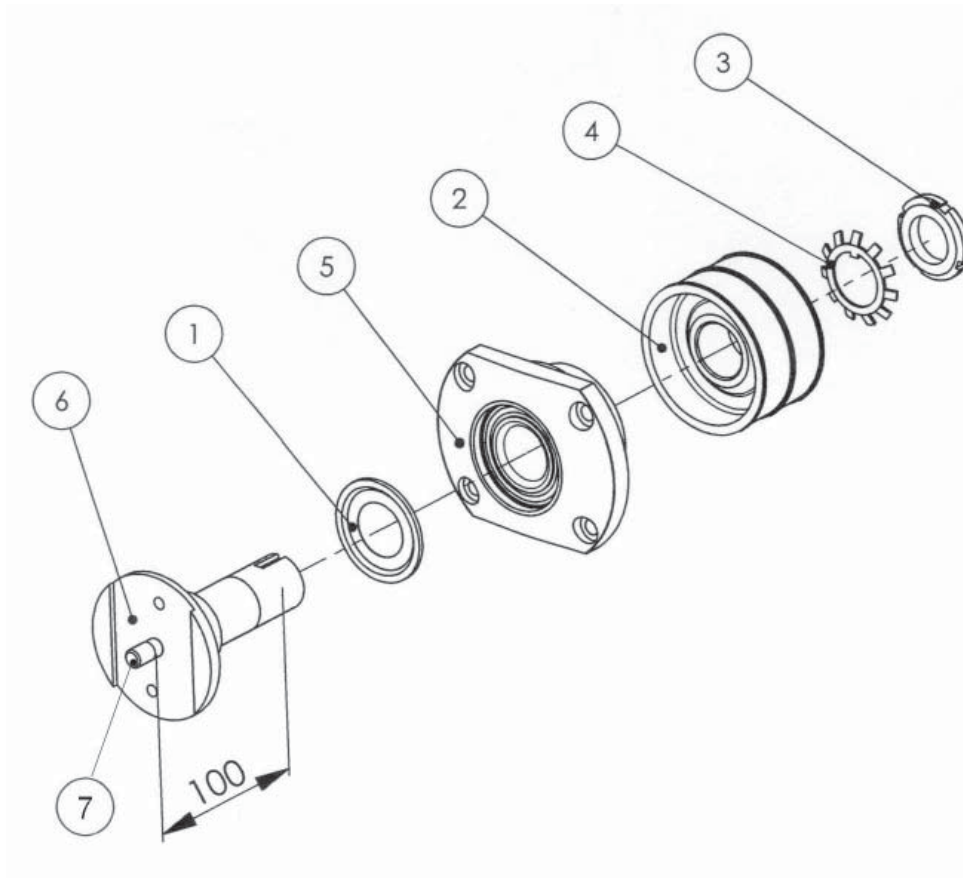


Ref.	Qty.	Part No.	Description	Assy.
1	1	05000038	Ring NILOS	
2	1	01050064	Blade Housing	
3	1	01050055	Short Shaft Motor, Blade LH	
4	1	01050044	Motor Pulley	
5	1	01050063	Threaded Nut On Left	
6	1	05011664	Stud M10 x 30	

### 3 CUTTING ELEMENTS

#### 3.16 BLADE HSG. ASSY. LONG RH - CODE 0105 0072

PL 3556

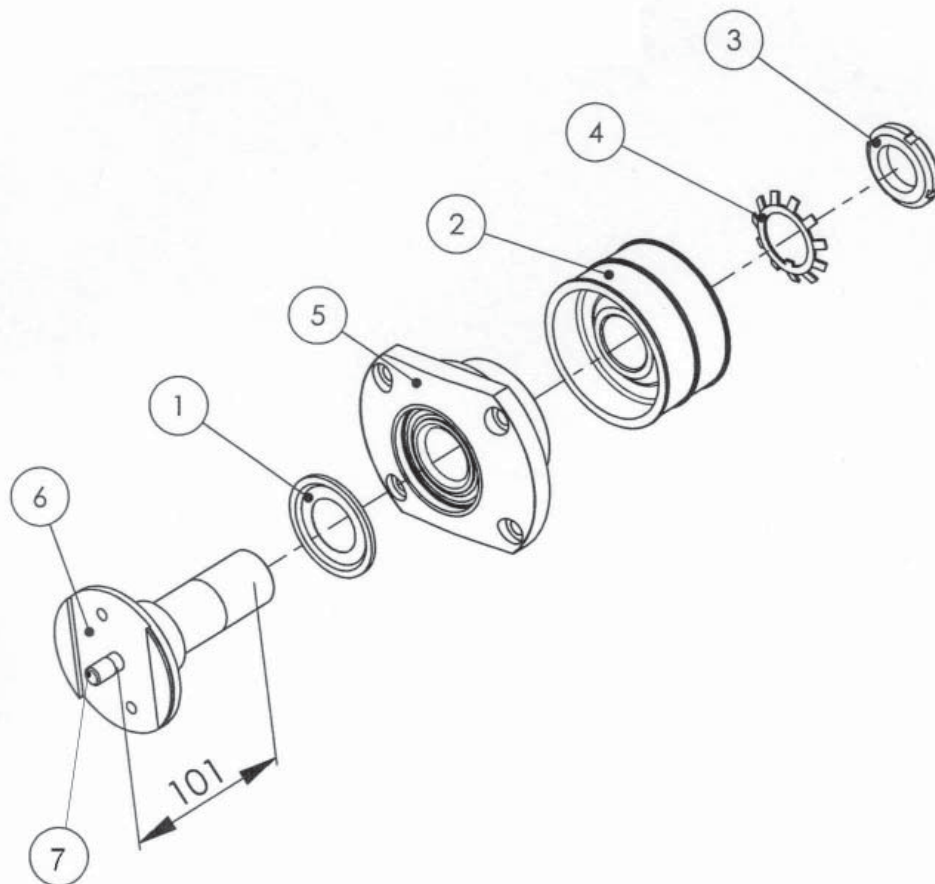


Ref.	Qty.	Part No.	Description	Assy.
1	1	05000038	Ring NILOS	
2	1	01050025	Pulley	
3	1	05005206	Nut KM6	
4	1	05005256	Washer MB6	
5	1	01050064	Blade Housing	
6	1	01050062	Long Shaft Blade RH	
7	1	05011664	Stud M10 x 30	

### 3 CUTTING ELEMENTS

#### 3.17 BLADE HSG. ASSY. LONG LH - CODE 0105 0071

PL 3558

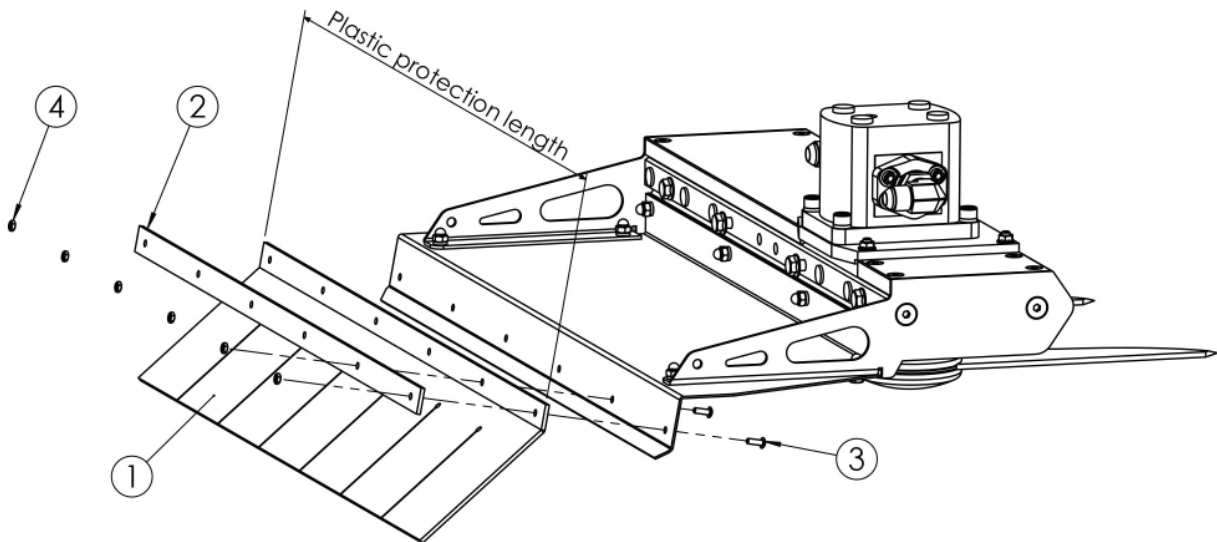


Ref.	Qty.	Part No.	Description	Assy.
1	1	05000038	Ring NILOS	
2	1	01050025	Pulley	
3	1	05005206	Nut KM6	
4	1	05005256	Washer MB6	
5	1	01050064	Blade Housing	
6	1	01050061	Long Shaft Blade LH	
7	1	05011664	Stud M10 x 30	

### 3 CUTTING ELEMENTS

#### 3.18 PLASTIC PROTECTION KIT - KB SERIES

PL 3665



Ref.	Description	Kit Reference			
		0000 2067	0000 2075	0000 2079	
1	Plastic Protection	Length	690 mm	400 mm	800 mm
		Reference	0105 0138	0105 0168	0105 0140
		Quantity	1		
2	Fixation Plate	Length	690 mm	400 mm	800 mm
		Reference	0105 0141	0105 0162	0105 0143
		Quantity	1		
3	Round Headed Screw M4 x 10	Reference	0501 1880		
		Quantity	6	4	7
4	Nut M4 Hu	Reference	0501 1219		
		Quantity	6	4	7

# 4 HYDRAULICS

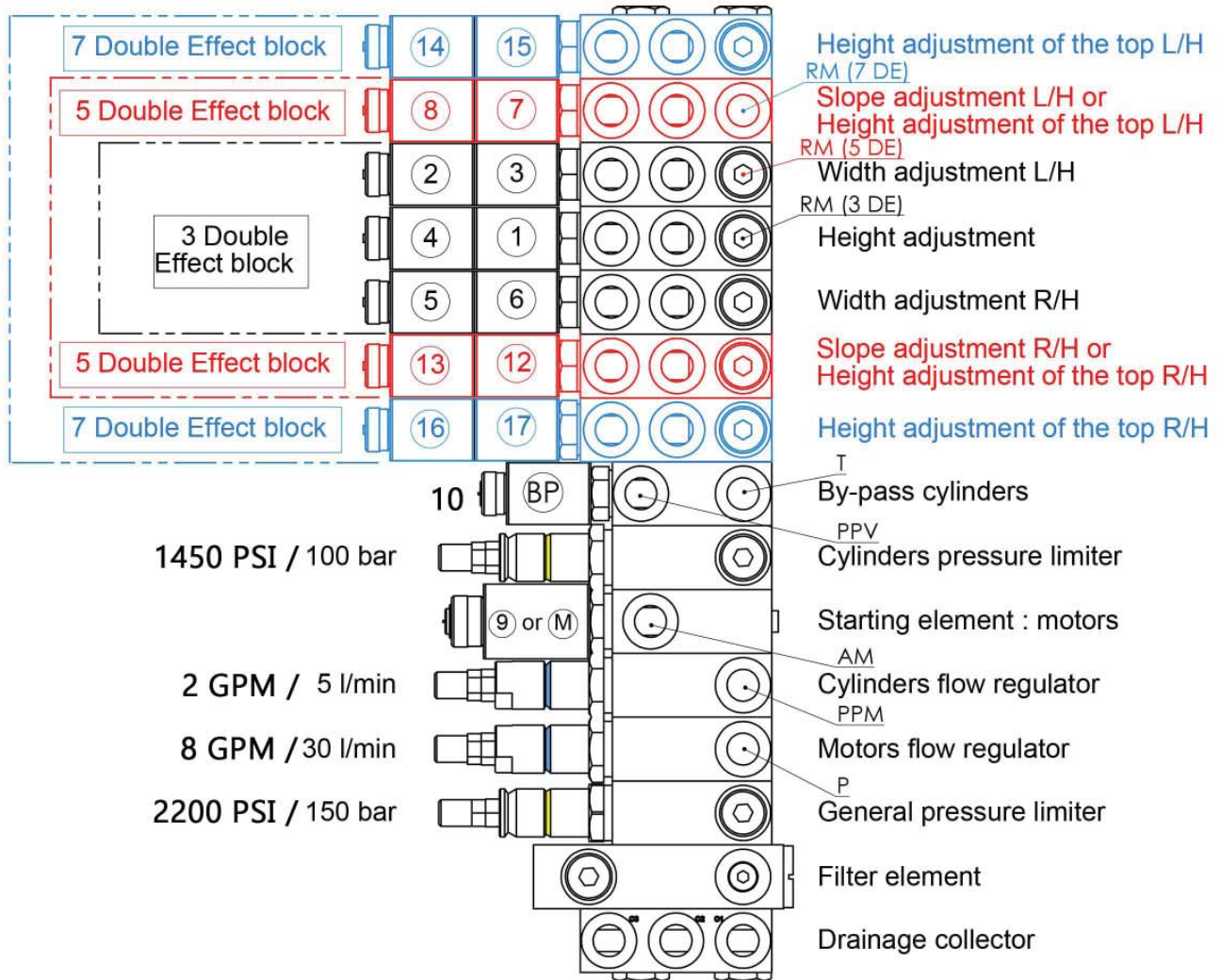
## 4.1 ELECTRIC SYSTEM WIRING

PL 2528

1 simple effect + 3 double effect - Ref. : 0502 2936

1 simple effect + 5 double effect - Ref. : 0502 2938

1 simple effect + 7 double effect - Ref. : 0502 2951

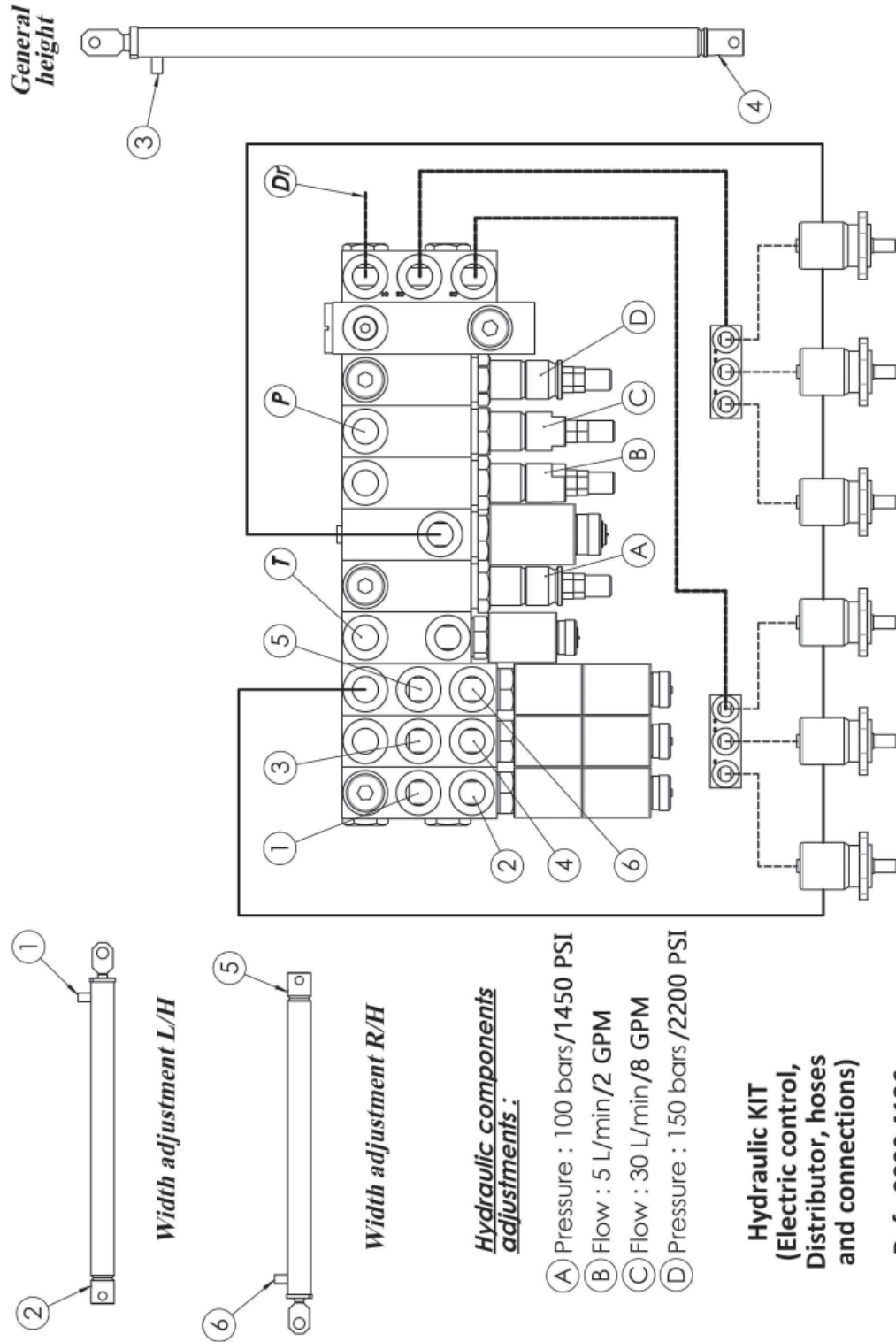


PPV : Cylinder pressure taker  
PPM : Motor pressure taker  
AM : Motors supply

RM : Motors return  
P : General power  
T : Return

## 4.2 ELECTRIC CONTROL - P2200S 160 UNIVERSAL

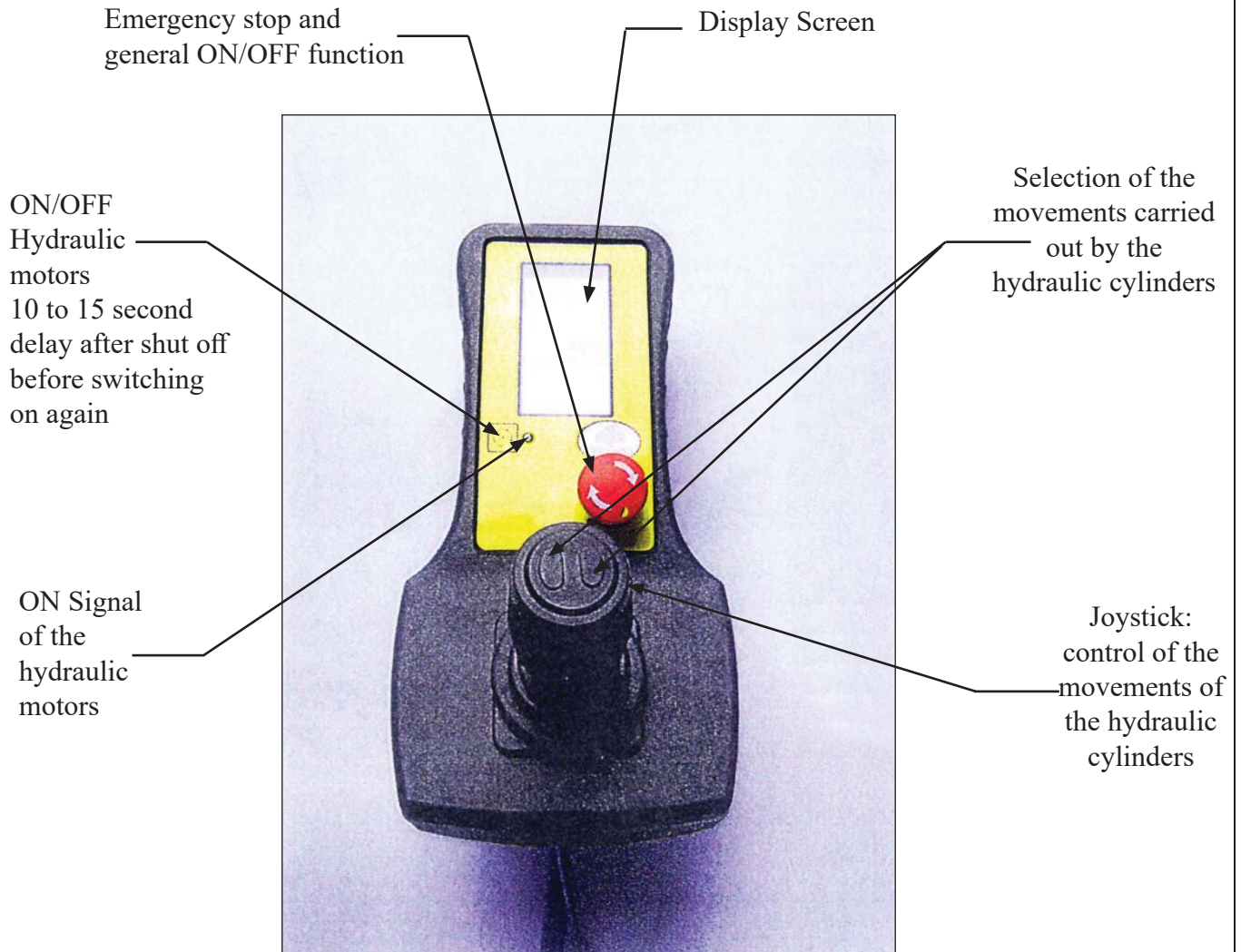
PL 4587



## 4 HYDRAULICS

### 4.3 ELECTRIC CONTROL HANDLE - CODE 0000 2340

PL 4456



To carry out a movement of a hydraulic cylinder, operate the joystick by tilting it towards one of the 4 directions following the desired cylinder movement.

Functions are changed by pushing the button located in the center of the joystick.

1. First press the button in order to select the desired function.
2. Then tilt simultaneously the joystick (without releasing the button).

**NOTE:** To carry out another movement it is necessary to bring the level to the central position (neutral position), then use steps 1 and 2 to obtain the next function (cylinder movement).

#### **IMPORTANT:**

In order to optimize the longevity of the control handle, after each use, keep the handle in a clean and dry place, devoid of dust and grease.

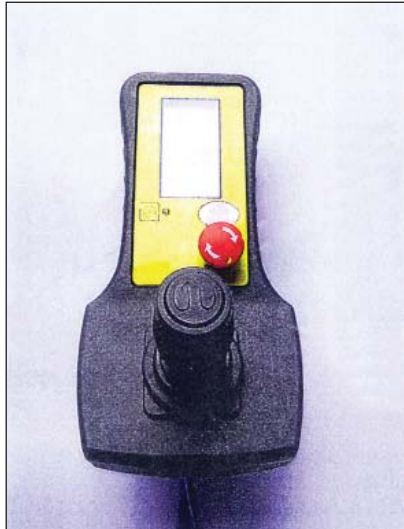


# 4 HYDRAULICS

## 4.4 ELECTRIC CONTROL HANDLE - CODE 0000 2404

PL 4857

**For machines equipped with 1 to 5 double effect cylinders, without function of control for proportional valve**

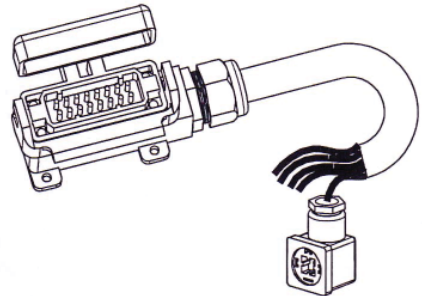
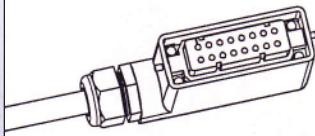


**Complete Electric Control Handle With Box, Wires and Female Plug:**

**0506 0051**

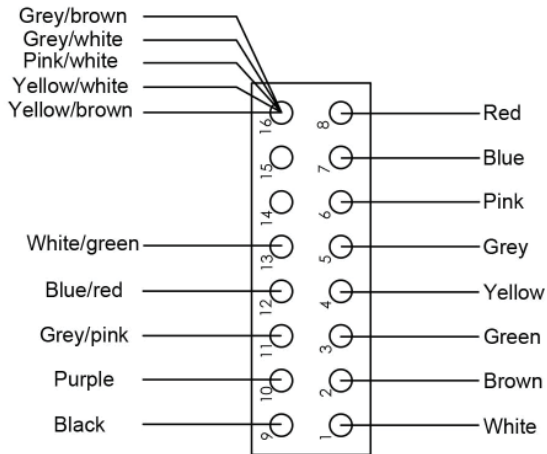
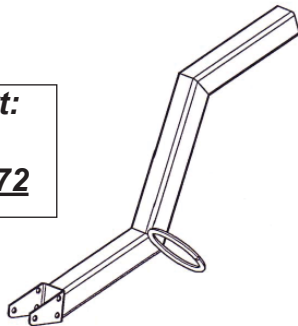
**Bundle of Wires and Male Plug (13 Connectors):**

**0506 1051**



**Support:**

**0502 9872**



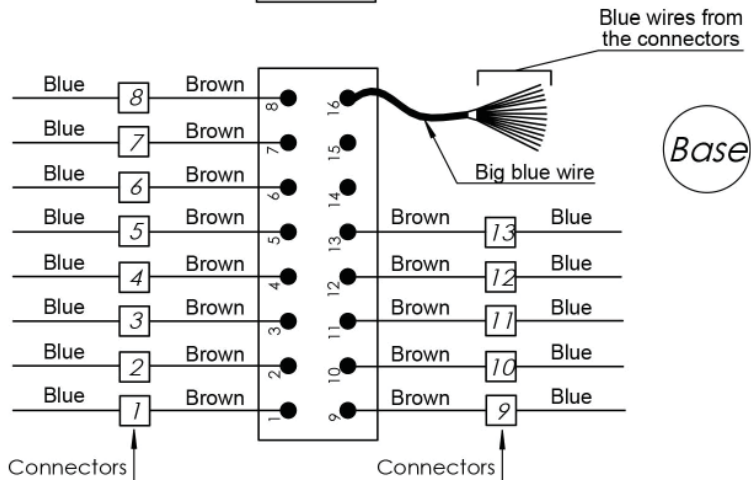
Plug

**Connectors 1 to 8, 12 and 13:**  
Double effect cylinder functions

**Connector 9:**  
ON/OFF Motors Function

**Connector 10:**  
By-pass Function

**Connector 11:**  
EVC Function (only in case of closed center hydraulic systems which work with the additional hydraulic unit - 0000 1561)



Base

4.5 ELECTRIC CONTROL WITH MONO LEVER FROM 1 TO 5 DE

**Complete control box**  
Ref. : 0506 0051



Power supply plug  
Ref. : 0504 8554

Base & cover with 16 pin male insert  
Ref. : 0504 8579

1 wire with terminal  
Ref. : 0504 8255

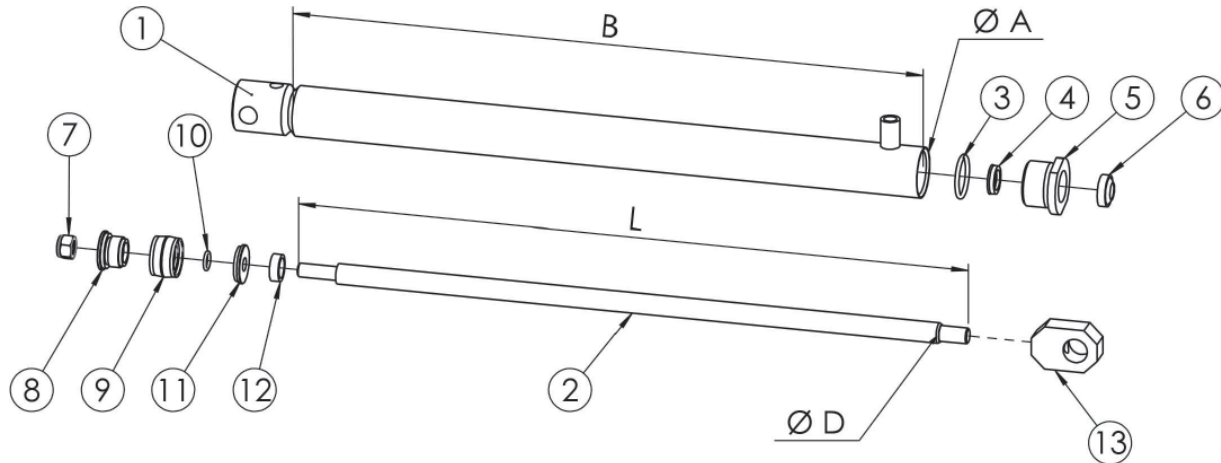
**Complete wiring harness**  
Ref. : 0506 1051



## 4 HYDRAULICS

### 4.6 DOUBLE EFFECT WIDTH CYLINDER Ø35 - 18

PL 1601



Ref.	Qty.	Part No.	Description	Assy.
1	1	0501 9353	Body ( <i>See Table Below</i> )	
2	1	0501 9352	Rod ( <i>See Table Below</i> )	
3	1	0500 1307	O-Ring	
4	1	0500 0043	Joint	
5	1	0501 9005	Threaded Base	
6	1	0500 1002	Joint	
7	1	0501 4300	Brake Nut M12	
8	1	0501 9670	Half Piston	
9	1	0500 0041	Piston Joint	
10	1	0500 1301	O-Ring R 10	
11	1	0501 9671	Flask	
12	1	0501 9004	Flange	
13	1	0501 9144	Fork	

Dimensions in mm:

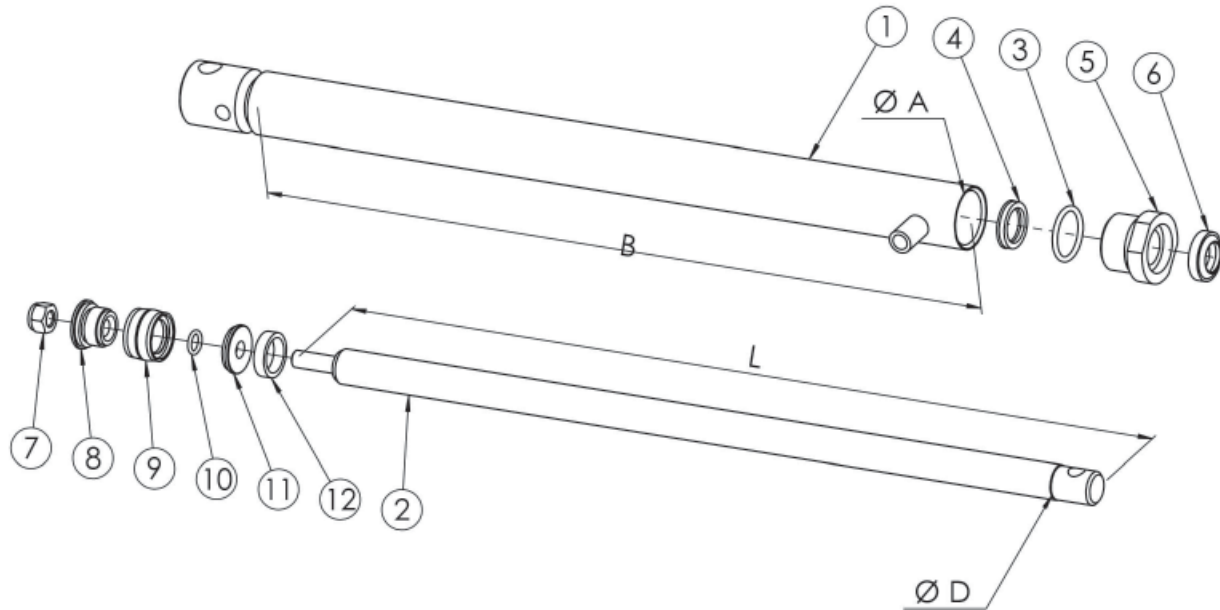
Cylinder:	Rod:	Body:	ØA	B	L	ØD	Stroke:
0501 9598	0501 9215	0501 9600	45	570	610	18	450

- Set of Seals: 0501 9678

## 4 HYDRAULICS

### 4.7 LIFT CYLINDER 35 - 25 - CODE 0502 0201

PL 1604



Ref.	Qty.	Part No.	Description	Assy.
1	1	0501 9484	Body (See Table Below)	
2	1	0502 0202	Rod (See Table Below)	
3	1	0500 1307	O-Ring	
4	1	0500 0042	Rod Joint Ø25	
5	1	0501 9117	Threaded Base	
6	1	0500 1004	Top Rod Joint Ø25	
7	1	0501 4300	Brake Nut M12	
8	1	0501 9670	Half Piston	
9	1	0500 0041	Piston Joint	
10	1	0500 1301	O-Ring R 10	
11	1	0501 9671	Flask	
12	1	0500 5319	Spacing Ring	

Dimensions in mm:

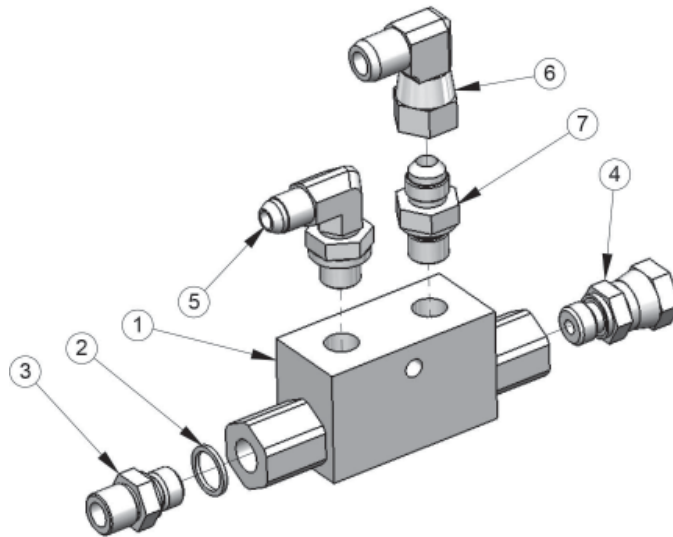
Cylinder:	Rod:	Body:	ØA	B	L	ØD	Stroke:
0502 0201	0502 0202	0501 9484	45	686	745	25	600

- Set of Seals: 0501 9679

## 4 HYDRAULICS

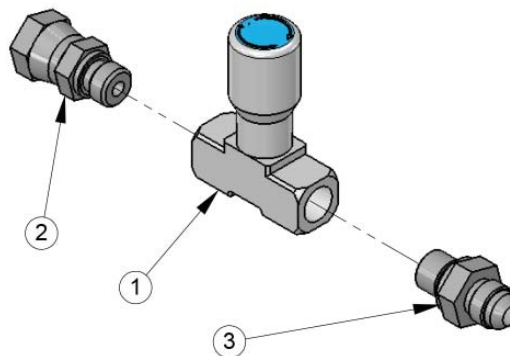
### 4.8 COMPLETE NON RETURN SECURITY VALVE JIC - CODE 0000 1322J

PL 3792



Ref.	Qty.	Part No.	Description
1	1	0502 3307	Double Valve
2	1	0500 2006	Joint
3	1	0500 7767	Junction
4	1	0500 7814	Adapter FJ 9/16" - 1/4" Gas Cyl.
5	1	0500 6577	Elbow MJ 9/16 - MG 1/4 90°
6	1	0500 6420	Elbow MJ 9/16 FJ 9/16 90°
7	1	0500 7816	Junction MJ 9/16 MG 8/13

### FLOW REGULATOR - CODE 0500 9074

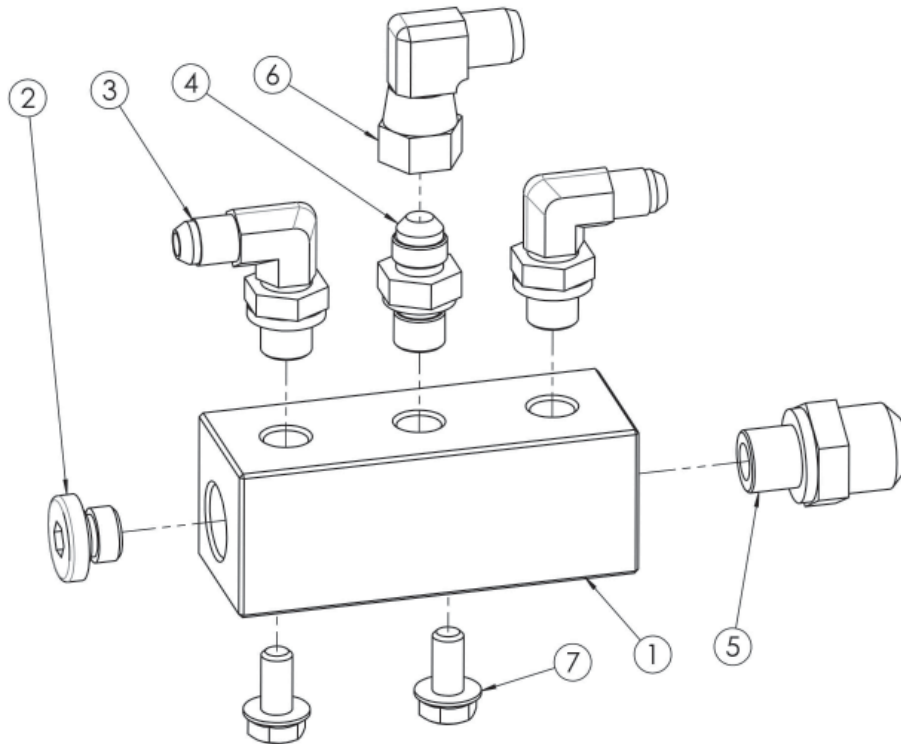


Ref.	Qty.	Part No.	Description
1	1	0500 9043	Flow Control Regulator
2	1	0500 7814	Adapter FJ 9/16" - 1/4" Gas Cyl.
3	1	0500 7816	Junction MJ 9/16 MG 8/13

## 4 HYDRAULICS

### 4.9 DRAINAGE COLLECTOR - CODE 0000 3089

PL 3783



Ref.	Qty.	Part No.	Description
1	1	0045 0942	Collector
2	1	0500 8669	Plug 12 x 17
3	2	0500 6577	Elbow MJ 9/16 - MG 1/4 90°
4	1	0500 7816	Junction MJ 9/16 MG 8/13
5	1	0500 7823	Union MJ 7/8 - 3/8" Cyl.
6	1	0500 6420	Elbow MJ 9/16 FJ 9/16 90°
7	2	0501 1877	Bolt Tensilok M8 x 16

## 5 SPECIAL TOOLS

### 5.1 SPECIAL TOOLS FOR VINE TRIMMERS

PL 3988

### Special tools : PROFILMATIC

Tool to unscrew and tighten  
the nut KM6 for free pulley

Ref. **0105 0199**



Tool to mount the  
belts on the pulleys

Ref. **0105 0157**



Tool to unscrew and  
tighten the pinion  
on motor pulley

Ref. **0045 0064**



Tool to assemble and  
disassemble the pulleys

Ref. **0105 0159**



Tool to maintain  
the blades during  
the disassembling  
and the reassembling

Ref. **0045 0921**

**(Standard Equipment)**



FEDERATION  
DES INDUSTRIES MECANIQUES  
Department of Legal Affairs and Environment

### REPLACING PARTS WITH «NON CERTIFIED ORIGINAL PARTS»

#### WARNING

to equipment users  
and to imitated parts manufacturers or sellers

**IMITATED OR  
FITTED PARTS**

#### REGARDING LEGAL RISKS - SAFETY - COUNTERFEITING

1. CHANGING OR MODIFYING COMPONENTS WITH OTHERS THAN THOSE ASSEMBLED AND RECOMMENDED BY THE MANUFACTURER, IS LIKELY TO QUESTION AGAIN THE INITIAL SAFETY CONDITIONS OF THE EQUIPMENT.

Any like operation on the equipment will be fully chargeable to he who will have intervened, and will be likely to challenge the validity of the manufacturer delivered EC marking.

In this event, the EC declaration of compliance lapses and THE MANUFACTURER WILL DISCLAIM HIS REGULATORY LIABILITY.

2. PARTS COUNTERFEITING AND UNFAIR COMPETITION CARRY HEAVY CIVIL AND CRIMINAL PENALTIES.

Counterfeiting or infringement involves the manufacturer's, the dealer's/retailer's, or even in some cases the imitated parts user's civil and criminal liability.

Unfair competition involves the manufacturer's and the «slavish imitations» dealer's civil liability, in so far as they take unjustified benefit of this operation, distort usual rules of competition law by misappropriating the manufacturer's efforts of design, adjustment, research of best adequacy and know-how.

The mechanical engineering industries manufacturers

✎ Warn parts manufacturers and dealers, duplicating or selling original parts, about the legal risk of imitations and unfair competition as for manufacturing and distributing slavish imitations.

✎ Draw users' attention to the risk for their EC declaration to lapse in case the safety conditions originally defined by the equipment manufacturer would be modified, and call for them not to participate in the intellectual property misappropriation and plundering which certain dishonest operators indulge in.