



# COLLARD®

## PROFILMATIC VINE TRIMMERS

### P2200 SERIES - OUR MOST POPULAR SERIES

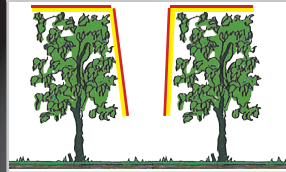
*P2200 Series*



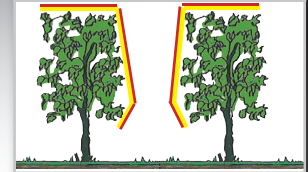
COLLARD designed the first vine trimmers and continues to be the World leader in vine trimmers. The heart of the COLLARD Trimmers is the unique lightweight aluminum alloy extrusion that provides a rugged, rustproof framework for the cutting blades. This blade framework is so strong that it has a **lifetime guarantee**. The unique saber shaped, non-clogging stainless steel blades never need sharpening. Our trimmers eliminate excess vine growth, open canopies for better air circulation and greatly improve spray and dust penetration.

The P2200 Series is our most popular trimmers as they all trim two half rows. Vine Trimmers are also available for trimming one half row, one complete row, and two complete rows.

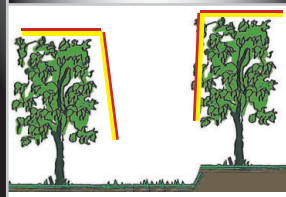
**P2200A & P2200B**  
2 half rows



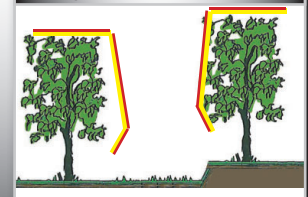
**P2200S & P2200SR**  
2 half rows w/skirts



**P2200T** 2 half  
rows terraced



**P2200TS** 2 half rows  
w/skirts terraced



**GEARMORE INC.**

13477 Benson Ave. • Chino, CA 91710

Ph: 909/548-4848 • Fax: 909/548-4747

[www.gearmore.com](http://www.gearmore.com) • [sales@gearmore.com](mailto:sales@gearmore.com)



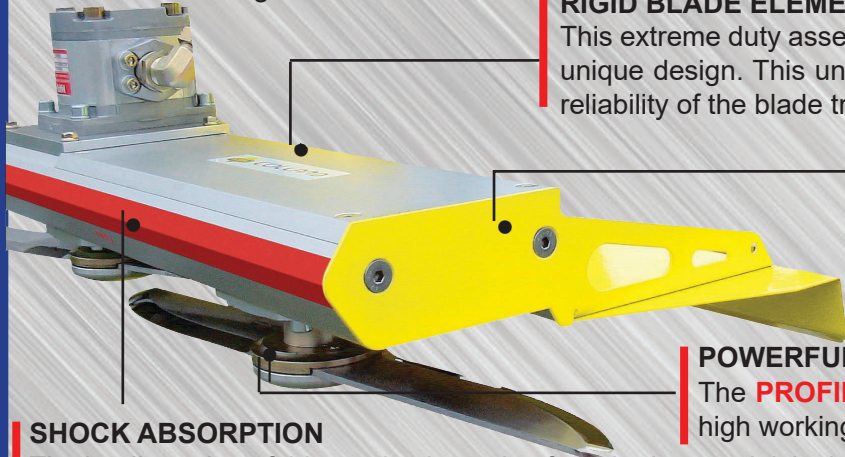
# COLLARD®

## UNIQUE FEATURES



### DESIGNED FOR TRIMMING

The aerodynamic shape of this profiled body was designed to facilitate more efficient penetration of the Trimmer **PROFILMATIC®** into the canopy, this profile also improves the fluid discharge of cut material.



### RIGID BLADE ELEMENT (COLLARD patent)

This extreme duty assembly is nearly indestructible due to the unique design. This unit is without equal and guarantees the reliability of the blade transmission.

### PROTECTED TRANSMISSION

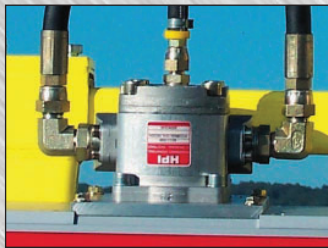
Enclosed by a special cover, the transmission is completely protected against debris, dust, rain, etc.

### POWERFUL TRANSMISSION

The **PROFILMATIC®** is even more powerful, ensuring a very high working speed yet reducing the required power input.

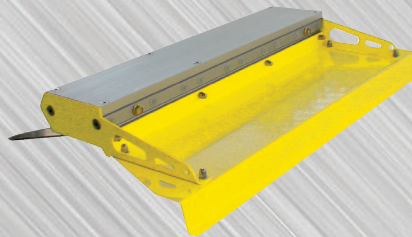
### SHOCK ABSORPTION

The leading edge of this section is made of synthetic material, it absorbs possible shocks, recessed screws of connection between the modules, ensures a smoother profile which facilitates the smooth evacuation of cut material.



### HYDRAULIC POWER

Only modern hydraulic drive technology can provide high power transmission for trimming with exceptional reliability and durability.



### SAFETY GUARDS

The **PROFILMATIC®** has a one piece rigid deflector, providing additional strength, offering complete protection and conformity of the applicable safety norms.



### JOYSTICK

Compact joystick with "user friendly" controls.



### EXCEPTIONAL HYDRAULIC COMPONENTS

Trimmer motors, distributor, etc. are all fitted with 60 micron oil filters for maximum protection. Special flow divider regulate the maximum speed of the blades. All settings are sealed at the factory for reliability.



### BLADE SAFETY COVERS (COLLARD patent)

Designed to remove the contact of the moving parts with the vegetation, it safeguards the quality of cut. Providing extra security to blade attachment, an added safety feature.



### TOP ADJUSTMENT (Optional)

The height adjustment of the top cutting element is independent to the vertical cutting element.

*Specifications Subject To Change Without Notice*

13477 Benson Ave. • Chino, CA 91710 • Ph: 909/548-4848 • Fax: 909/548-4747

# WORLD LEADER OF VINE TRIMMERS

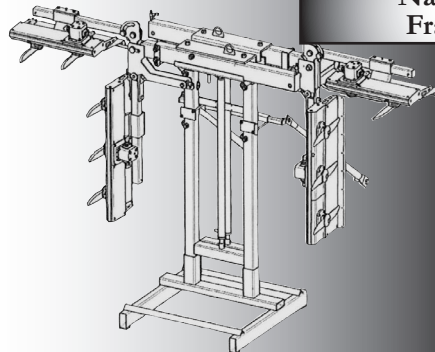


# COLLARD®

**P2200A Trims  
2 half rows**



**Narrow  
Frame**



**P2200S Trims  
2 half rows plus skirts**



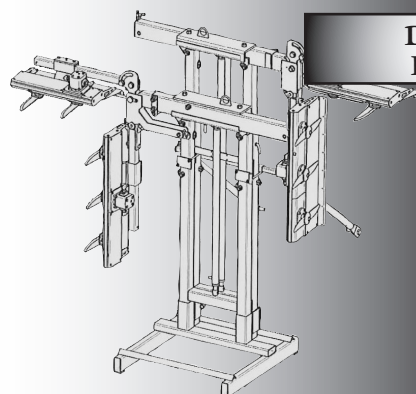
**Wide  
Frame**



**P2200T Trims  
2 half rows-terraced**



**Double  
Frame**



The COLLARD patented stainless steel blades have a saber profile edge that maintains the high velocity over the length of the cutting edge. The blades cut up to 1/2 inch thick vines and limbs, is rustproof, self-cleaning, and never needs sharpening.

*Specifications Subject To Change Without Notice*

13477 Benson Ave. • Chino, CA 91710 • Ph: 909/548-4848 • Fax: 909/548-4747



**COLLARD**

# HISTORY, QUALITY CONTROL, FEATURES & SPECIFICATIONS

## STANDARD FEATURES

- Heavy duty modular frame construction
- Vertical breakaway system to protect the trimmer and tractor
- Flow limiter for motor controls
- "State of the Art" hydraulic motors to insure long life
- Smooth, thin line blade transmission for easy movement through the foliage
- Rigid deflectors so cut material is thrown away from the operator
- Wide range of adjustments for setting trimmers to operator's exact requirements
- Most operators are confidently operating the trimmer at 6 miles per hour
- Strong, but lightweight and easy to operate
- Blades turn at 2200 R.P.M., ensures clean cane ends, which dry and seal neatly to reduce the risk of disease
- Machine runs smooth and quiet, with no vibration
- Equipped with electro-hydraulic joystick controls for precise trimmer adjustments
- High speed stainless steel blades, self cleaning and never need sharpening
- Hydraulic cylinders are fitted with load/hold check valves for safety in case a hose fails
- Trimmers come with all hoses, fittings and JIC couplers

## HISTORY

The COLLARD family has been servicing wine growers for 5 generations. Andre Collard invented the first mechanical vine trimmer in 1962.

## QUALITY CONTROL

Every stage in the production process is controlled to guarantee superior quality. After final assembly, each machine is run through the test bench where everything is checked - rotation speed, operating pressure, hydraulic cylinders, flow rates, etc. All this is done to insure that every machine leaving the factory is in perfect working order.

Your **COLLARD** Dealer

## SPECIFICATIONS (ALL MODELS TRIM TWO HALF ROWS)

Order Code	Model Number	Vertical Cut	Blades Per Vertical	Row Width Adjustment	Frame Width	Frame Type	Skirts
0113 2400-1504	P2200A	51"	3	39.3" to 71"	Narrow	Simple	No
0113 2450-1504	P2200B	63"	4	39.3" to 71"	Narrow	Simple	No
0113 0300-1481J	P2200C	51"	3	49" to 108"	Wide	Standard	No
0113 2550-1481J	P2200S	63"	4	49" to 108"	Wide	Standard	Yes
0113 2950-1481J	P2200SR	63"	4	57" to 108"	Wide	Reinforced	Yes
0113-3750	P2200T	51"	3	56" to 130"	Wide	Double	No
0113-3650	P2200TS	63"	4	56" to 130"	Wide	Double	Yes

*Note: All models have 2 hydraulic driven blades that will cut up to 30.7 inches horizontally.*

*Specifications Subject To Change Without Notice*

13477 Benson Ave. • Chino, CA 91710 • Ph: 909/548-4848 • Fax: 909/548-4747