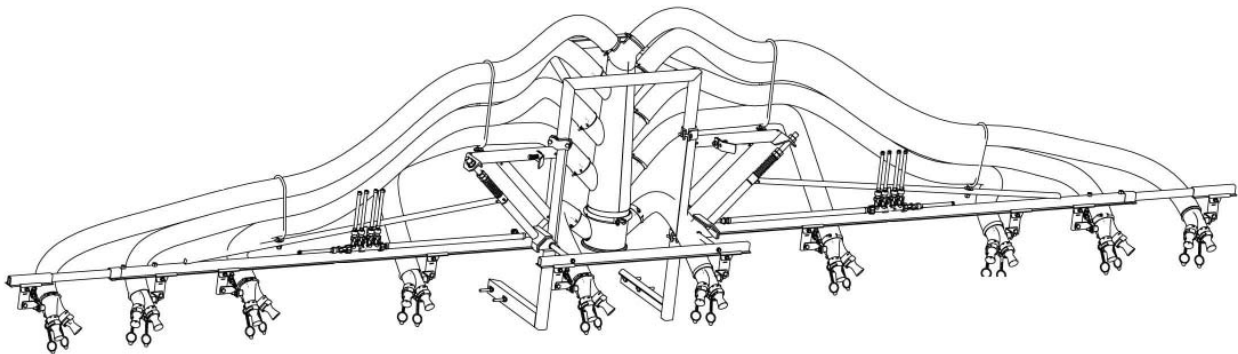




# VENTURI AIR SPRAYERS 23 FOOT - 4 or 5 ROW AIR BOOM



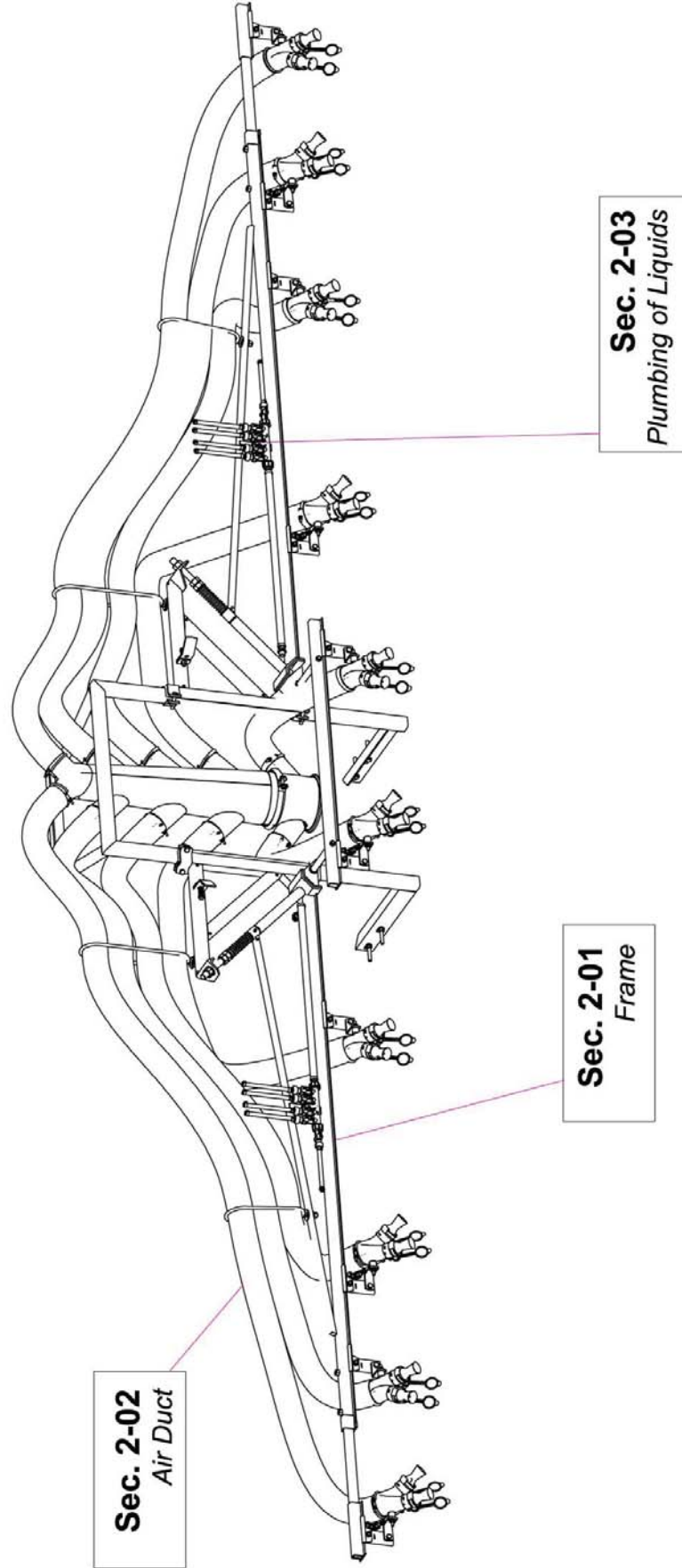
## PARTS MANUAL FOR BM.10.2.02 BOOM

April 2014

# TABLE OF CONTENTS

<u>SECTION</u>	<u>DESCRIPTION .....</u>	<u>PAGE</u>
<b>1</b>	<b>Introduction .....</b>	<b>1</b>
1.1	Purchaser's Responsibility .....	1
1.2	Serial Number Information .....	1
<b>2</b>	<b>Complete Frame .....</b>	<b>2 - 10</b>
2.01	Main Frame.....	2-3
2.02	Air Hoses & Nozzles .....	4-5
2.03	Liquid Flow & Nozzle Parts .....	6-7
2.04	Manifold & Shut Off Valves .....	8
2.05	Complete Anti-Drip Nozzle Assy.....	9
<b>3</b>	<b>Limited Warranty .....</b>	<b>10</b>

# INDEX



# 1 INTRODUCTION

---

We welcome you as an owner of a Gearmore sprayer. Please read the following instructions and refer to them when required. This manual contains parts diagrams and replacement parts lists. Do not modify the equipment in any way. Unauthorized modification may impair the function and/or safety and could affect the life of the equipment.

Where replacement parts are necessary for periodic maintenance and servicing, genuine factory replacement parts ***MUST*** be used to restore your equipment to original specifications. The manufacturer will not be responsible for injuries or damages caused by use of unapproved parts and/or accessories.

The manufacturer reserves the right to make improvements to the machinery and parts at any time and at their discretion.

**OPERATOR ORIENTATION** - The directions left, right, front and rear, are as seen from the driver's seat and facing in the direction of travel.

## 1.1 PURCHASER'S RESPONSIBILITY

It is the responsibility of the owner to make sure the machine is maintained properly, and that all parts are in working order. It is the responsibility of the purchaser and/or operator to.....

- Inspect the equipment and replace or repair any parts that are damaged or worn which under continued operation would cause damage, wear to other parts, or cause a safety hazard.
- Return the equipment or parts to the authorized dealer, from where it was purchased, for service or replacement of defective parts that are covered by warranty. (The factory may inspect equipment or parts before warranty claims are honored.)
- Payment of all costs incurred by the dealer for travelling to or transporting the equipment for warranty inspection and/or claims.

## 1.2 MODEL / SERIAL NUMBER

NAME: \_\_\_\_\_

PURCHASED FROM: \_\_\_\_\_

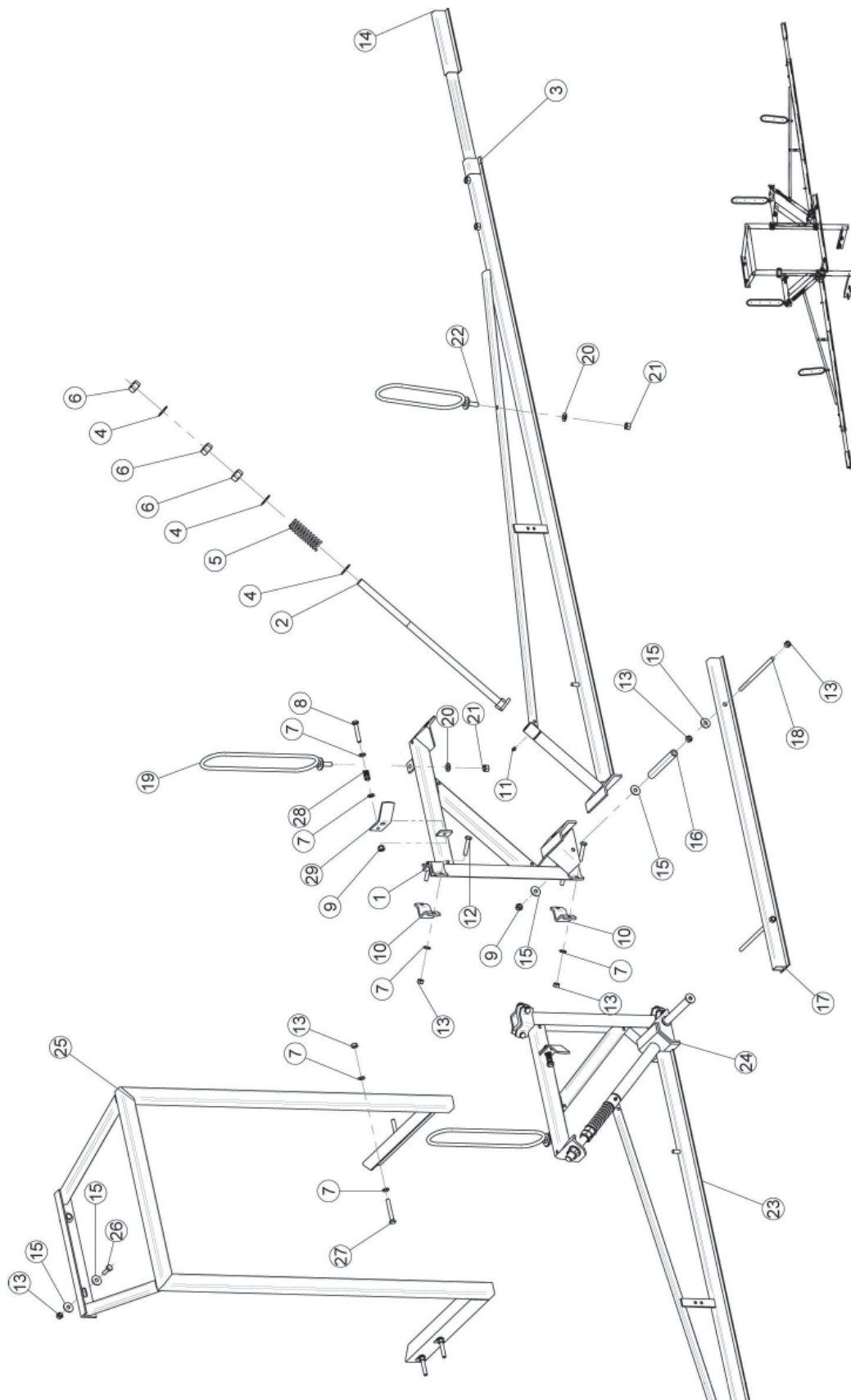
DATE OF PURCHASE: \_\_\_\_\_

MODEL NUMBER: \_\_\_\_\_

SERIAL NUMBER: \_\_\_\_\_

# 2 SPARE PARTS

## Sec. 01 MAIN FRAME (20.220.001)



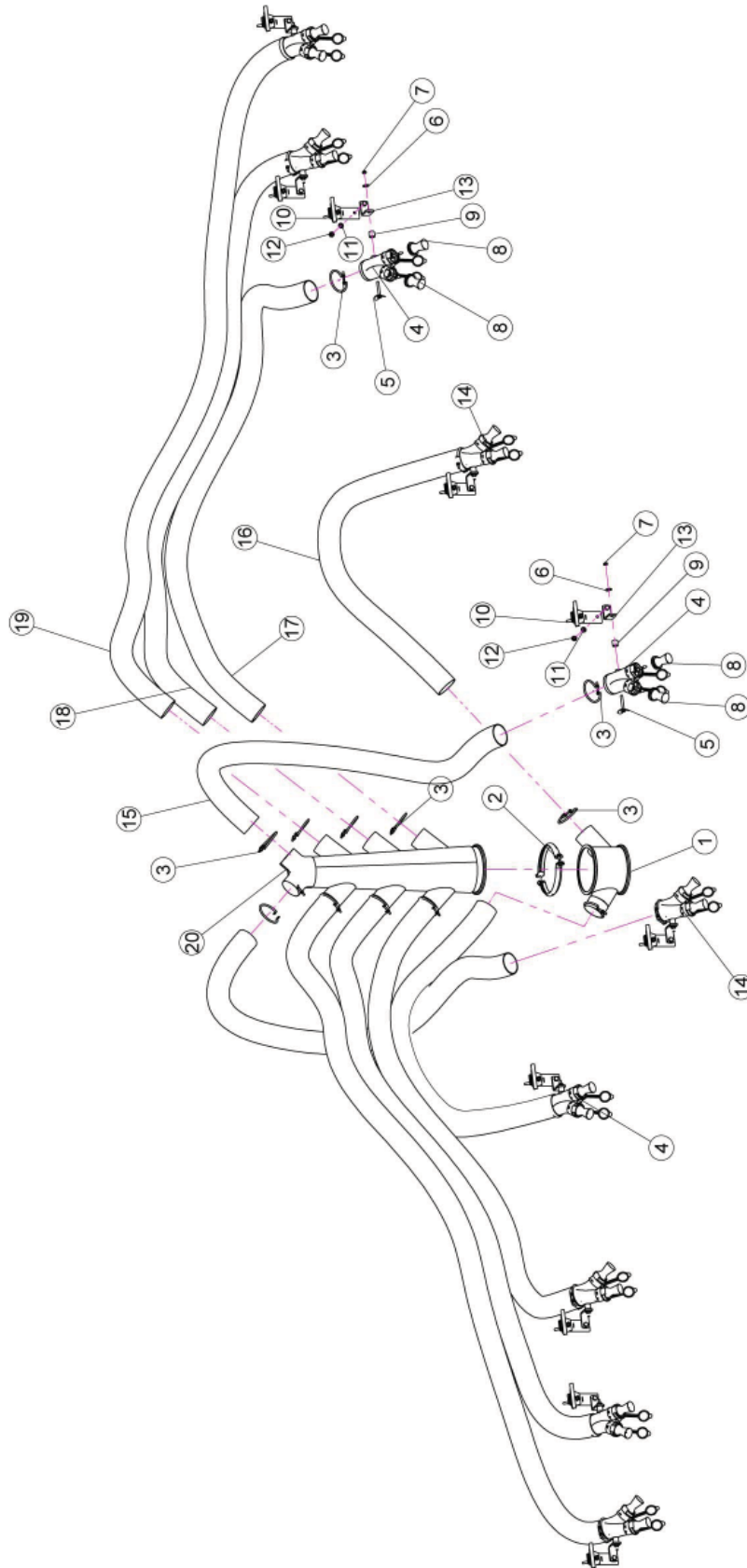
## 2 SPARE PARTS

### Sec. 01 MAIN FRAME (20.220.001)

<u>REF #</u>	<u>QTY.</u>	<u>PART NO.</u>	<u>DESCRIPTION</u>
1	1	20.182.0DX	RH Supporting Brace
2	2	20.188.000	Special Bolt
3	1	20.185.000DX	Side Section For Boom (RH)
4	6	RP.020.000	Washer D.20
5	2	S0.457.000	Spring D.33.5 L=110 Fil. D.4.5
6	6	D0.20.5587G	Nut M20
7	21	RP.010.000	Washer D.10
8	2	TE.010.060T	Screw TE M10 x 60
9	4	DA.010.0AG	Self Locking Nut M10
10	4	20.225.000	Shaped Plate Fixing Supporting Joint
11	2	ID.006.001	Greaser
12	8	TE.010.050T	Screw M10 - 50
13	18	D0.10.5587G	Nut M10
14	2	20.187.000	Extension For Side Section
15	10	RP.010.030	Washer D.10 x 30 mm
16	2	20.230.000	Distance Pipe
17	1	20.189.000	Central Support For 2 Outlets
18	2	BRF.010.021	Threaded Bar M10
19	2	S0.454.000	Keeping Hose Ring
20	4	RP.012.000	Washer D.12
21	4	D0.12.5587G	M12 Nut
22	2	S0.454.100	Keeping Hose Ring
23	1	20.185.000SX	Side Section For Boom (LH)
24	1	20.182.0SX	LH Supporting Brace
25	1	20.184.001	Central Frame
26	2	TE.010.035T	Screw TE 10 x 35
27	4	TE.010.070T	Screw TE 10 x 70
28	2	04.785.000	Spring
29	2	21.006.000	Stirrup

# 2 SPARE PARTS

## Sec. 02 AIR HOSES & NOZZLES



## 2 SPARE PARTS

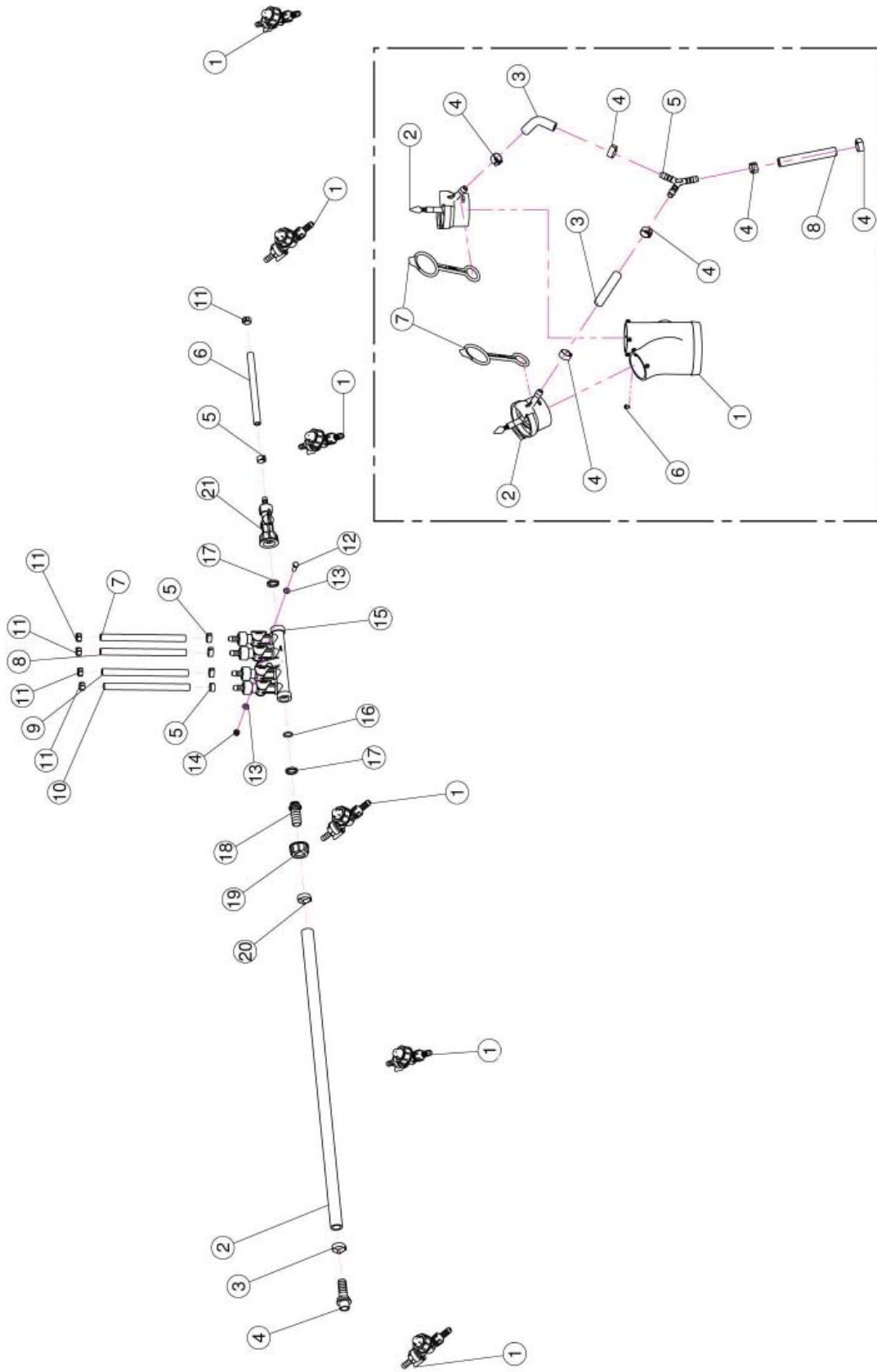
### Sec. 02 AIR HOSES & NOZZLES

<b><u>REF #</u></b>	<b><u>QTY.</u></b>	<b><u>PART NO.</u></b>	<b><u>DESCRIPTION</u></b>
1	1	20.470.000	Body D.175 With 2 Outlets D.80
2	1	05.616.000	Pipe Clamp D.175
3	20	F0.080.000	Clamp D.80
4	5	20.221.000DX	Complete 2 Nozzles Right Body Kit
5	10	21.059.000	Hand Screw
6	10	RP.008.024	Washer D.8 x 24
7	10	D0.08.5588G	Nut M8
8	20	00.003.5.50	Nozzle 3.5 / 50
9	10	20.265.000	Spacer
10	10	20.067.10C	Sliding Hand Support
11	10	RP.010.000	Washer D.10
12	10	DA.010.0AG	Self Locking Nut M10
13	10	04.787.000	Bracket For Bars
14	5	20.221.000SX	Complete 2 Nozzles Left Body Kit
15	As Req'd	80MMRFH+	Hose D.80 L=1700 (Per Foot)
16	As Req'd	80MMRFH+	Hose D.80 L=2200 (Per Foot)
17	As Req'd	80MMRFH+	Hose D.80 L=2700 (Per Foot)
18	As Req'd	80MMRFH+	Hose D.80 L=3000 (Per Foot)
19	As Req'd	80MMRFH+	Hose D.80 L=4200 (Per Foot)
20	1	20.183.001	Body With 8 Outlets D.80 For Bars



# 2 SPARE PARTS

## Sec. 03 LIQUID FLOW & NOZZLE PARTS



## 2 SPARE PARTS

### Sec. 03 LIQUID FLOW & NOZZLE PARTS

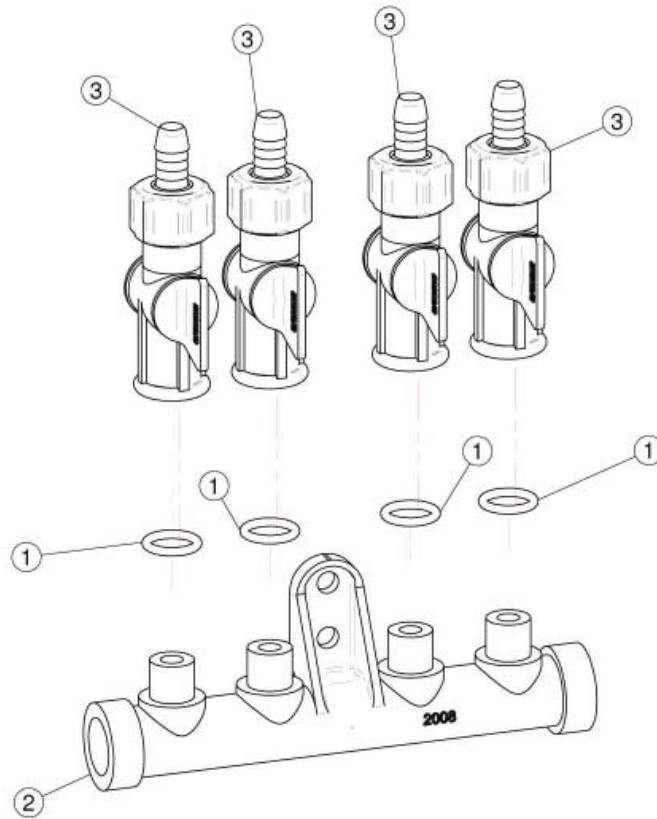
<u>REF.</u>	<u>QTY.</u>	<u>PART NO.</u>	<u>DESCRIPTION</u>
1	10	00.226.105C	Complete Anti-Drip For Bars
2	As Req'd	02.211.000	Hose D.16 x 23 L=1000 (Per Foot)
3	2	FC.023.5.025	Hose Clamp 23.5 - 25
4	2	21.260.000	Straight Hose R.H. D.16 Thr M 3/4"
5	10	FC.013.5.015	Hose Clamp
6	As Req'd	02.217.000	Hose D.8 x 16 L=2600 (Per Foot)
7	As Req'd	02.217.000	Hose D.8 x 16 L=2100 (Per Foot)
8	As Req'd	02.217.000	Hose D.8 x 16 L=1400 (Per Foot)
9	As Req'd	02.217.000	Hose D.8 x 16 L=1000 (Per Foot)
10	As Req'd	02.217.000	Hose D.8 x 16 L=1500 (Per Foot)
11	10	FC.012.5.014	Hose Clamp
12	4	TE.006.020T	Screw TE M6 x 20
13	8	RP.006.000	Washer D.6
14	4	D0.06.5588G	Nut M6
15	2	02.008.204C	4 Taps Liquid Manifold
16	2	OR.000.117	13.1 x 18.34 x 2.62 O-Ring Gasket
17	4	02.349.000	17 x 23 x 3 Flat Gasket
18	2	02.002.000	Straight Union 3/4" R.H. 18
19	2	00.055.045	3/4" Fly Nut
20	2	FC.022.5.024	Hose Clamp 22.5 - 24
21	2	02.202.101C	Complete Valve F 1/4 Gas

#### **00.217.100**

1	1	00.217.100DX	2 Nozzles Body
2	2	20.016.01C	Pipe With Olive
3	As Req'd	02.217.000	Hose D.8 x 13 L=50 (Per Foot)
4	6	FC.013.5.015	Hose Clamp
5	1	02.077.010	Y Fitting
6	8	TA.03.5.09.51	Self Threading D3.5 x 9.5
7	2	20.697.000	Nozzle Stop
8	As Req'd	02.217.000	Hose D.8 x 13 L=90 (Per Foot)

## 2 SPARE PARTS

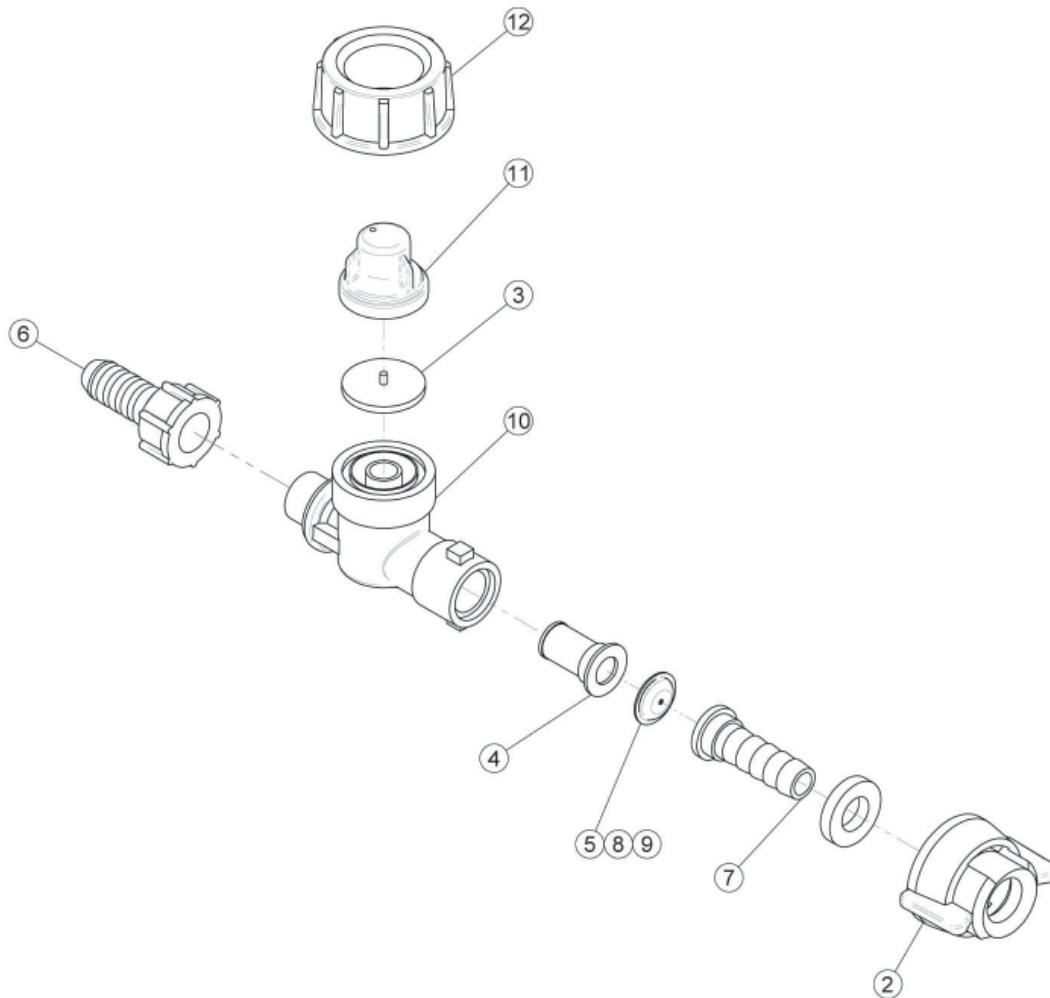
### Sec. 04 MANIFOLD & SHUT OFF VALVES (02.008.204C)



<b>REF.</b>	<b>QTY.</b>	<b>PART NO.</b>	<b>DESCRIPTION</b>
1	4	OR.000.117	13.1 x 18.34 x 2.62 O-Ring Gasket
2	1	02.008.000	Sprayheads Liquid Manifold
3	4	20.202.200	Valve F. 1/4 With Rubber Holder D.10

## 2 SPARE PARTS

### Sec. 05 COMPLETE ANTI-DRIP NOZZLE ASSEMBLY (00.226.105C)



<b><u>REF #</u></b>	<b><u>QTY.</u></b>	<b><u>PART NO.</u></b>	<b><u>DESCRIPTION</u></b>
2	1	00.226.142	Fly Nut + Gasket
3	1	00.226.010	Viton Gasket
4	1	02.311.010	50 Mesh Filter
5	1	02.305.012	D 1.2 Stainless Steel Disc (Standard)
6	1	02.007.011	Straight Union R.H. Ø11
7	1	02.379.020	Straight Union R.H. 10
8	1	02.305.010	D 1 Stainless Steel Disc
9	1	02.305.015	D 1.5 Stainless Steel Disc
10	1	00.226.041.A	Anti-Drip Body
11	1	00.226.041.C	Gasket
12	1	00.226.045	3/4" Fly Nut

### 3 LIMITED WARRANTY



GEARMORE, INC., warrants each new Gearmore product to be free from defects in material and workmanship for a period of twelve (12) months from date of purchase to the original purchaser. This warranty shall not apply to implements or parts that have been subject to misuse, negligence, accident, or that have been altered in any way.

Our obligation shall be limited to repairing or replacement of any part, provided that such part is returned within thirty (30) days from date of failure to Gearmore through the dealer from whom the purchase was made, transportation charges prepaid.

This warranty shall not be interpreted to render us liable for injury or damages of any kind or nature, direct, consequential or contingent, to person or property. This warranty does not extend to loss of crops, loss because of delay in harvesting or any other expenses, for any other reasons.

Gearmore in no way warrants engines, tires, or other trade accessories, since these items are warranted separately by these respective manufacturers.

Gearmore reserves the right to make improvements in design or changes in specification at any time, without incurring any obligations to owners or units previously sold.

GEARMORE, INC.  
13477 Benson Ave.  
Chino, CA 91710

Always refer to and heed machine operating warning decals on machine.

*To validate the warranty on this product, please log-in to our website - [www.gearmore.com](http://www.gearmore.com).  
You will find "warranty registration" listed at the top of our homepage.*