

AerWay®

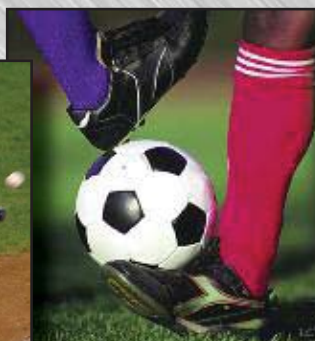
TURF AERATORS

*New water restrictions make it critical that
you improve your water efficiency!*



"Turf Aeration"

So Easy You Can Do It Today Without Disrupting Play



This is a fast, effective, low cost method to keep the soil surface open and minimize compaction without disrupting use of the turf area. As surface compaction is a continuous problem, caused by both use (foot traffic) and maintenance (mowing), venting aeration should be scheduled as often as possible to be effective. AerWay's complete line of **Turf Aerators** feature 5 different tine rotors to handle your exact requirements. The polyethylene built-in ballast tanks, when filled with water, obtain maximum tine penetration. Some of the popular options are: smoothing rear roller, various tine spacings, and electric/hydraulic power pak for pull type units.

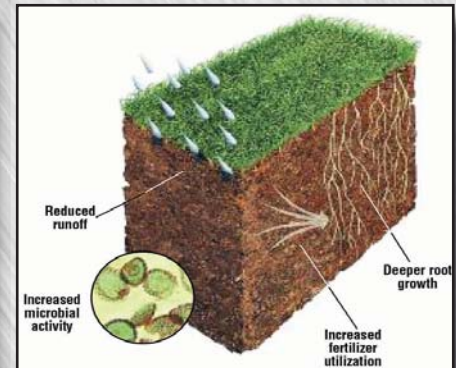
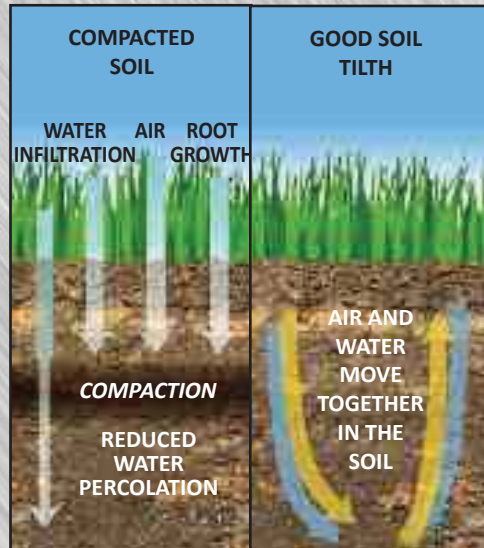
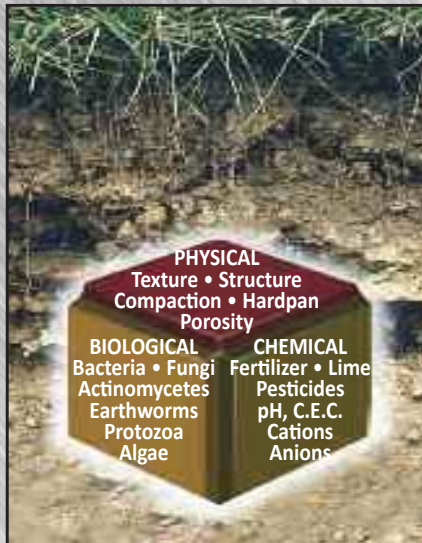
GEARMORE INC.

13477 Benson Ave. • Chino, CA 91710 • Ph: 909/548-4848
Fax: 909/548-4747 • www.gearmore.com

AerWay®

GOES TO THE HEART OF SOIL PROBLEMS BY RELIEVING COMPACTION

Revitalize your turf with AerWay® technology



Air and Water Move Together

Correcting compaction makes a dramatic improvement in soil tilth. It is the most basic step you can take to improve turf grass production. That's because air and water move together in the soil profile. With proper air / water balance in the soil, all the biological and chemical systems work at peak efficiency.

The bottom line is that relieving soil compaction is the first step to increase soil productivity.

Compaction relief is the single most cost-effective method for producing healthy turf grass.

Soil Basics

Three systems, physical, biological and chemical, work together to make soil productive. Soil scientists agree that the physical condition of soil is the key to efficient biological and chemical activity, which in turn determines how much plant life the soil can support.

Soil Tilth: Why compaction is the Turf Manager's #1 enemy

Soil tilth is a measurement of the balance between basic soil elements: mineral, air, water, and organic matter. The proper balance of these elements increase soil production by allowing efficient interaction of all the soil systems. Air and water balance in the soil is the key to good root growth.

Compaction stresses plants because air and water are "squeezed" from the soil. Biological and chemical activities which depend on air and water become severely restricted. Root growth is impaired, turf production suffers.

Regular treatment with AerWay® can turn your soil around

COMPACTION RELIEVED

- Increased pore space
- Reduced bulk density
- Increased gas exchange
- Efficient nutrient movement
- Optimum water content
- Increased air content
- Deeper root penetration

SOIL CONDITIONS

- Increased water infiltration
- Improved drainage
- Reduced erosion
- Greater root mass
- Increased microbial activity
- Less nutrient leaching
- Reduced risk of injury

PLANT RESPONSE

- Even turf growth
- Well developed plants
- Deeper, healthier roots
- Increased root mass
- Better drought tolerance
- Improved disease resistance
- Decreased weed pressure

AerWay®

MANY TINE ROTORS ALLOW YOU TO ORDER AN AERATOR TO FIT YOUR EXACT REQUIREMENTS

Compaction relief insures healthy turf grass

SHATTERTINE® - *for use on roughs, fairways, tees & sports fields*

Only patented AerWay® Shattertines® lift and fracture tough soil to increase air, water, and nutrient movement. As the AerWay® moves over the surface of the ground, the unique angles and offsets of the shattertines crack and shatter compacted soil 7 inches and deeper, resulting in increased water percolation, microbial activity and fertilizer utilization.



SPORTSTINE® - *for use on sports fields, fairways, tees and approaches*

The Sportstine® is a 6 inch long, heavy-duty venting aeration tine that can be fitted to any AerWay® frame. Its usage is fast, effective and economical. It can even be used mid-season when the need is greatest and the "window of opportunity" exists. Sportstine® lets you aerate and play right away.



FINETINE® - *for use on greens, tees, approaches, and fine turf*

The AerWay® deep Finetine® relieves surface compaction and penetrates up to 6 inches. It can be combined with the rear smoothing roller on most frames for a fast venting aeration of greens and tees without any disruption of play, and there is no clean up.



CORING TINE® - *is ideal for use on fairways and sports fields where coring cultivation is desired*

The Coring Tine® is used for dethatching and to prepare the soil for top-dressing and overseeding. This is a 3/4" diameter, 4" long tine that can be used at high speed. They are available on 4", 5" and 6" centers and can be fitted into a variety of AerWay® frames.



SUPER FINETINE® - *for use on greens, tees, approaches, and fine turf*

The Super Finetine® is designed to be used as a thatch management tool. The Super Finetine® accomplishes venting aeration through the thatch layer to maintain infiltration rates between verticutting and coring treatments. The Super Finetine® is available with tine centers as close as 3" x 3" and it can be retrofitted on any AerWay® frame.



AerWay®

VERY DEPENDABLE • EASY TO OPERATE

Features a Five (5) Year Warranty



The 3-pt. hitch, Cat. 1 aerators feature ballast tanks, 3" diameter rotor tubing with replaceable tines and 1 3/8" (35mm) solid shafts with easy to service greaseable pillow block bearings



The pull type aerators feature hydraulic lift cylinder with hoses, pneumatic turf tires, clevis hitch, and optional electric/hydraulic power pack.

LIQUID BALLAST TANK

The liquid ballast tank, standard on all AerWay® units, provides an easy and effective way to ballast the AerWay® for complete ground penetration. It comes complete with straps and an draining spout. The ballast tank should always be completely filled during operation.



| Width | Approx. H.P. w/Ballast | 3-Point Weight | 3-Point Wt. w/Ballast | Pull Type Weight | Pull Type Wt. w/Ballast |
|-------|---------------------------|-------------------|--------------------------|---------------------|----------------------------|
| 45" | 20 - 30 | 977 lbs. | 1627 lbs. | 1194 lbs. | 1844 lbs. |
| 60" | 25 - 40 | 1143 lbs. | 2000 lbs. | 1437 lbs. | 2300 lbs. |
| 75" | 30 - 45 | 1223 lbs. | 2263 lbs. | 1587 lbs. | 2627 lbs. |
| 90" | 40 - 65 | 1398 lbs. | 2648 lbs. | 1753 lbs. | 3000 lbs. |

AerWay®

AerWay® is manufactured
by SAF-HOLLAND

RECOMMENDED OPTIONAL REAR SMOOTHING ROLLER

The AerWay® smoothing roller option allows the operator to lift the roller completely off the ground to leave the aeration holes open, or adjust tine penetration in less than one inch increments, or support the tined roller completely out of the ground for use exclusively as a smoothing roller.

Your Gearmore/AerWay Dealer

SAF Holland reserves the right to alter specifications without notice or obligation

GEARMORE INC.

13477 Benson Ave. • Chino, CA 91710 • Ph: 909/548-4848
Fax: 909/548-4747 • www.gearmore.com

Form # AW0003-15