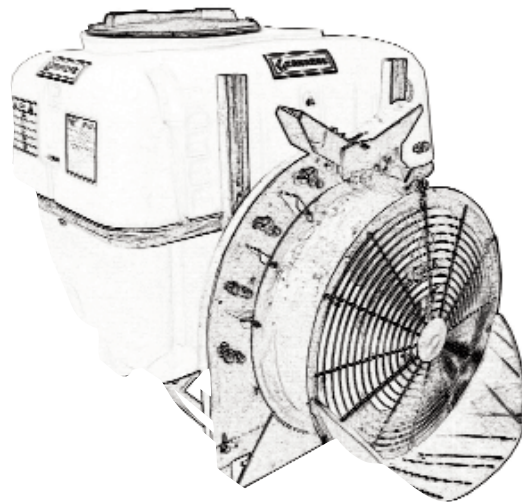




AIR BLAST SPRAYERS



**OPERATION, SERVICE
& PARTS MANUAL FOR
MODELS: APL-G200, & APL-G400**

April 2014

TABLE OF CONTENTS

<u>SECTION</u>	<u>DESCRIPTION</u>	<u>PAGES</u>
1	Introduction	3
2	Operating Sprayer.....	4
3	Lubrication	5
4	Cleaning & Storage.....	6
5	Suction Filter Service	7
6	Pump Maintenance.....	8
7	General Safety Information	9
8	Troubleshooting	10
9	Formula & Rate Chart	11
10	Parts	12 - 33
10.1	Tank Assembly	12-14
10.2	Run of Fluids	15-17
10.3	Fan Assembly	18-22
10.4	Pump Assembly	23-25
10.5	Valve Assembly.....	26-27
10.6	Nozzle Assembly.....	28
10.7	Driveline Assembly	29
10.8	Optional Tommy Gun	30-31
10.9	Optional Electric Controls.....	32-33
11	Warranty	34

1 INTRODUCTION

We welcome you as an owner of the Gearmore 3-point hitch sprayer. Before you read on to the operation and maintenance of the sprayer, please read the following general information.

1. **POWER SOURCE:**

The sprayer is designed to mount to any 540 RPM tractor with a 3-point hitch. The horsepower required will vary depending on the pressure setting of the control valve.

2. **PUMP:**

The pump on the sprayer is a diaphragm pump. Pistons power the diaphragms that pump the liquid. The unit has protection against corrosion, as the valves are stainless steel.

3. **TANK:**

The tank comes with a jet agitation system. It also has a sump, so the tank can be completely drained.

4. **STRAINERS:**

The sprayer is equipped with three strainers. A large filter screen is located under the tank cover. A main strainer located by the side of the pump and a strainer screen in every nozzle assembly. All strainers are easily accessible for cleaning.

5. **TRANSMISSION:**

Special single speed transmission with neutral. Speed one and neutral are indicated by the decal on the machine. Neutral is for when you want to use your sprayer for handgun spraying and thus, the fan will not be turning.

6. **BLOWER:**

Air is supplied by an 8 blade propeller. The fan is made of a special high strength plastic alloy and precision balanced for smoother operation. The whole fan assembly is protected by heavy wire mesh screening. However, special care should be taken when working around the blower.

7. **NOZZLES:**

The air blast fan assembly is equipped with special ceramic nozzle tips that can be changed for different gallonage requirements. The nozzles can be shut off individually by turning 90 degrees.

2 TO OPERATE SPRAYER

1. Connect sprayer to tractor 3-point hitch.
2. Connect up the P.T.O. driveshaft, after you have checked to make sure the driveshaft is not too long.
3. Check strainer screen, to make sure it is clean.
4. Check strainer shut-off valve, making sure the handle is in the open position.
5. Select transmission speed, if your sprayer is equipped with the air blast fan assembly.
6. Refer to calibration page to calibrate the sprayer. Set regulator pressure as required.
Important - The pressure regulator adjusting knob must be unscrewed (turned to left) as far out as possible before operating sprayer. Then gradually screw in (turn to right) to desired pressure. Failure to operate in this manner could cause a sudden surge, which could damage the sprayer. By sliding the control handle left towards the pressure gauge, you can turn the valve one-half a turn to put the valve in bypass position. This would be used for mixing chemicals, etc. It takes the pressure off the pump and sends the liquid back to the tank. Turn the valve in the opposite direction for spraying. By sliding the handle away from the pressure gauge, you can adjust the pressure setting by turning the valve.
7. Engage tractor P.T.O. and run for a couple of minutes to make sure the jet agitator has mixed the chemicals thoroughly. Last, turn the control valve handles to the position required. Either right hand, left hand or both sides spraying.

Remember, it is always best to make a practice run with water to be sure you have the correct rates and coverage.

3 LUBRICATION

1. **DRIVESHAFT** - The driveshaft comes not greased, so must be done before sprayer is put into use. After that, grease *every 50 hours*. It is also necessary, from time to time, to untelescope the driveshaft to clean and re-grease tubings.
2. **TRANSMISSION** - Observe the sight gauge, and install 90 weight transmission oil when necessary.
3. **PUMP** - The clear oil reservoir should be filled to the indicator mark. If oil is low, add engine oil, non-foaming, non-detergent 30 weight oil. The pump oil must be changed after the first 100 running hours and then at the end of every working season. (*See pump page for more details.*)

GENERAL MAINTENANCE

Carefully follow all instructions as stated in this operators manual. This includes lubrication, maintenance and operation of the sprayer. The sprayer was designed and built for years of reliable service if properly cared for. However, an air blast sprayer is a high R.P.M. machine, thus, daily attention is required.

1. Check all bolts for tightness.
2. Check sprayer for leaks.

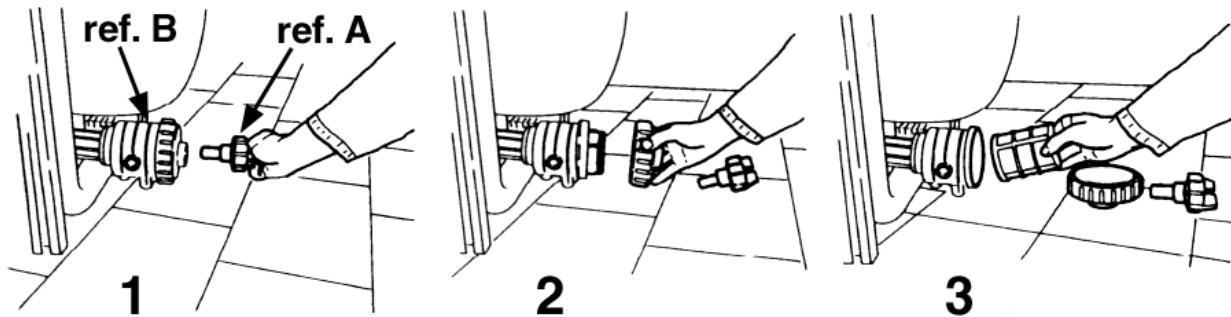
4 CLEANING & STORAGE

1. Wash and flush out sprayer after completion of each phase of your spraying program.
2. Flush out sprayer when changing chemicals, if there is a possibility of incompatibility.
3. Clean sprayer very thoroughly before storing at the end of the spraying season. If you are in a cold climate, final rinse should be with a sufficiently concentrated anti-freeze to prevent freeze-up in areas that were not thoroughly drained.
4. Check sprayer over for needed repairs before time to spray again.
5. Preparing the sprayer for use in the Spring means completion of all needed repairs, installation of all drain plugs and checking sprayer for leaks with a tank of water.

SAFETY TIPS

- ❑ Sprayer should be operated only by qualified persons.
- ❑ *Always* fill sprayer slowly to avoid spillage.
- ❑ When starting sprayer, maintain a safe distance from moving parts.
- ❑ *Never* run P.T.O. at speeds in excess of 540 R.P.M.
- ❑ *Do not* make adjustments when sprayer is running, unless specifically recommended.
- ❑ *Never* leave sprayer unattended while it is running.
- ❑ Keep hands, feet and clothing away from all moving parts.
- ❑ Handle chemicals carefully; follow the manufacturer's directions for mixing and applying chemicals.

5 SUCTION FILTER SERVICING



1. Remove the plunger valve (ref. A) from filter assembly (ref. B).
2. Unscrew large ring nut on filter assembly, removing nut and cover.
3. Remove and clean strainer on cartridge, replace if necessary.

6 PUMP MAINTENANCE

The pump is serviced, tested and ready for use. Nevertheless, before starting the sprayer, we advise checking the oil level.

The oil level should be filled to the mark on the plastic tube.

When adding oil, remove cap and fill to level mark with SAE 30 weight engine oil.

CHANGING THE OIL

1. Remove the pump and drain the oil by turning the pump upside down. To do this remove the filler cap and turn the P.T.O. shaft by hand.
2. Fill the crankcase with mineral (flushing) oil to wash all internal parts. Then drain pump again.
3. Add new oil and at the same time turn the P.T.O. shaft by hand. When the correct oil level has been reached, continue to turn the shaft until all the air bubbles in the oil have disappeared.

DIAPHRAGM AND VALVE REPLACEMENT

I. *Valve & O-ring Replacement*

1. Occasionally debris can cause the valves to not seat properly or damage the o-rings. To check for this problem, follow these steps:
 - a. Remove the check valve manifold. (See parts list for your model.)
 - b. With manifold removed, valves can readily be removed and checked for debris or wear.

To replace valves or o-rings, refer to parts list for appropriate kits.

II. *Diaphragm Replacement*

1. Drain the oil from the pump. Rotate the shaft to remove excess oil.
2. Remove the pump heads.
3. Use a box wrench to remove the diaphragm retaining bolt, support washer and diaphragm.
(To replace diaphragms order appropriate repair kit. See parts list.)
4. Turn the crankshaft to bring the piston to its downstroke and seat the new diaphragm into the sleeve groove. Install retaining washer and tighten bolt.
5. Refill crankcase with 30 weight oil. Rotate the shaft to distribute oil and fill to proper level.

7 GENERAL SAFETY INFORMATION



WARNING - Do not pump flammable or explosive fluids such as gasoline, fuel oil, kerosene, etc. Do not use in explosive atmospheres. The pump should be used only with liquids compatible with the pump component materials. Failure to follow this warning may result in personal injury and / or property damage and will void the product warranty.

Use of pressure relief device, on the discharge side of pump, is required to prevent damage from pressure build-up, if the discharge is closed or blocked, while the power source is still running.

Do not operate pump above recommended R.P.M.

Do not pump at pressure higher than the maximum recommended for the pump (*see specifications*).

Operate pump between 45° and 145° F liquid temperatures.

Make certain that the power source conforms to the requirements of your equipment.

Provide adequate protection in guarding around the moving parts, such as the shaft and pulleys.

Disconnect power before servicing.

Release all pressure within the system before servicing any component.

Drain all liquids from the system before servicing.

Secure the discharge lines before starting the pump. An unsecured discharge line may whip, causing personal injury and/or property damage.

Check hoses for weak or worn condition before each use. Make certain that all connections are tight and secure.

Periodically inspect the pump and the system components. Perform routine maintenance as required (*see maintenance section*).

Do not operate a gasoline engine in an enclosed area. Be sure the area is well ventilated.

Use only pipe, hose and fittings rated for maximum rated pressure of pump or pressure at which pressure relief valve is set. Check with local supplier for proper pressure rating. (*Do not use used pipe!*)

Do not use these pumps for pumping water or other liquids for human or animal consumption.

8 TROUBLESHOOTING

PROBLEM:	CAUSE:	REMEDY:
The pump does not draw water.	<p>One or more valves are seating improperly.</p> <p>Suction line is plugged or collapsed. Clogged strainer.</p>	<p>Examine the valve seatings and clean them.</p> <p>Examine suction line. Clean strainer.</p>
Pressure gauge fluctuates excessively.	The pump is sucking in air through the suction union or air has not been entirely evacuated from the pump.	Examine the suction hose and make sure it is firmly secured. Run the pump with the outlet hose open to evacuate air from the pump.
The liquid flow is irregular.	One or more valves are seating improperly.	Examine the valve seatings and clean them.
Output drops and the pump is noisy.	Oil level is too low.	Add oil to correct level (halfway up the sight tube).
Oil comes out of the discharge port.	One or more diaphragms split.	Drain the pump of oil. Dismantle the heads and fit new diaphragms. Fill to correct oil level with motor oil (30W).
Water is pumped at little or no pressure.	The sealing valve on the pressure control valve is worn.	Replace washer and, if necessary, the valve seat.

9

FORMULA & RATE CHART

For Calibrating Gearmore Air Blast Sprayers

These must be known:

1. Tree spacing in feet (swath width)
 2. Tractor speed in feet per minute
 3. Gallons per acre desired
- Note:** (a.) 1 acre = 43,560 sq. ft.
 (b.) 1 MPH = 88 ft./min.

Tree spacing _____ ft. x tractor speed _____ ft./min. x application rate _____ gal./acre ÷ 43,560 = G.P.M. Divide G.P.M. by number of sprayer nozzles to determine G.P.M. per nozzle. Now choose correct nozzle disc and pressure setting from charts. Charts give G.P.M. per nozzle disc.

CALIBRATION FORM

Tree spacing _____ ft.
 Tractor speed _____ ft./min.
 Application rate _____ gal./acre

Tree spacing _____ ft. x tractor speed _____ ft./min. x application rate _____ gal./acre ÷ 43,560 = G.P.M.

Next: G.P.M. _____, number of nozzles _____ = _____ G.P.M. per nozzle
 Refer to chart for: Nozzle disc # _____ Swirl plate _____
 Pressure setting _____ P.S.I.

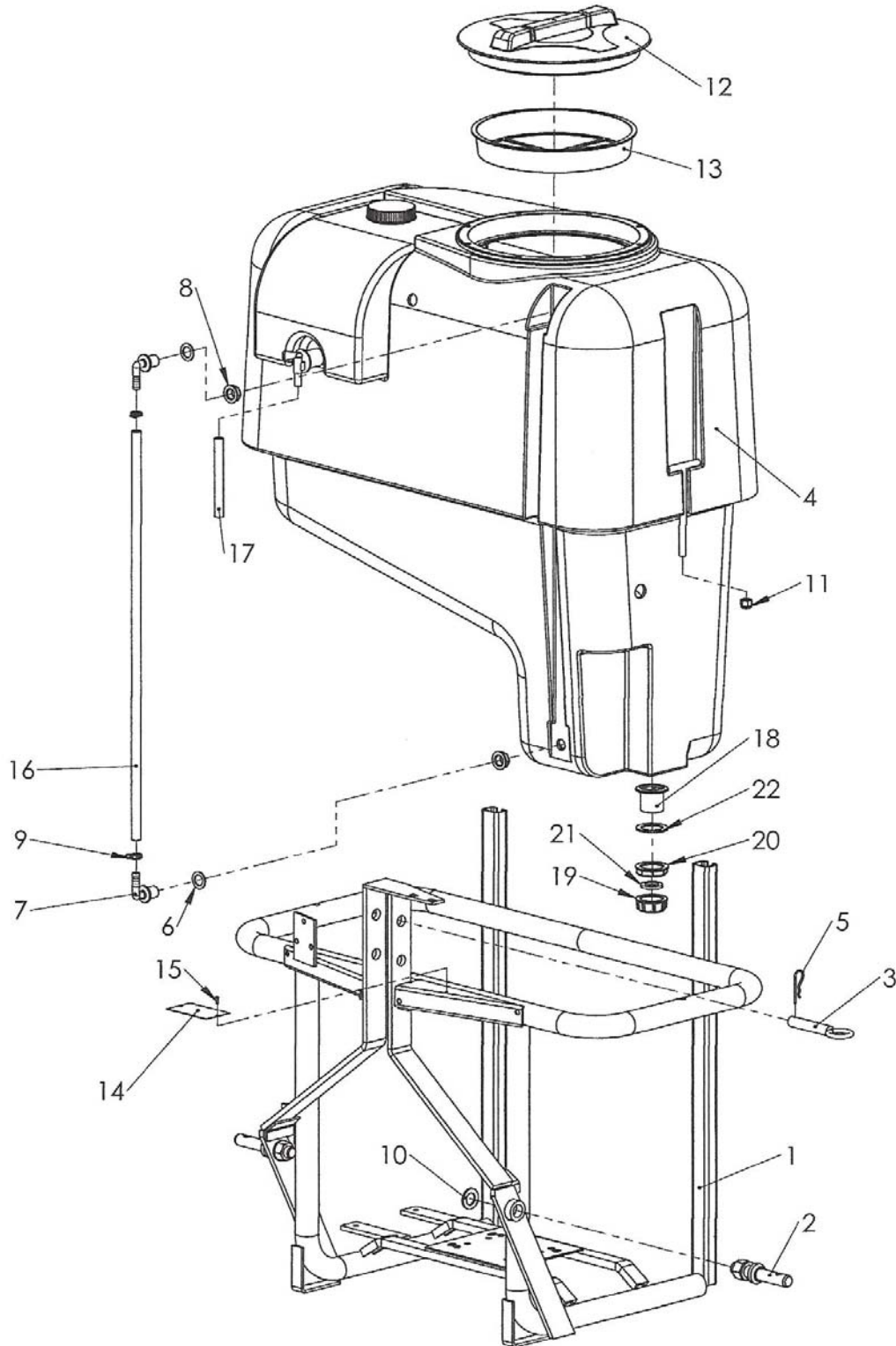
RATE CHART FOR SINGLE NOZZLES, WITH SMALL PINK DISC

DISC SWIRL SIZE PLATE		PRESSURE (P.S.I.)										
		50	75	100	125	150	175	200	250	300	350	400
0.8	2 hole	.16	.18	.20	.22	.24	.26	.28	.30	.34	.36	.38
1.0	1.0	.25	.30	.36	.40	.44	.48	.51	.58	.64	.69	.72
1.2	1.0	.40	.49	.57	.63	.69	.74	.78	.87	.97	1.04	1.11
1.5	1.2	.55	.64	.74	.81	.90	.96	1.02	1.12	1.22	1.31	1.37
1.8	1.5	.76	.94	1.09	1.21	1.32	1.39	1.47	1.61	1.74	1.87	1.99
2.0	1.8	.92	1.15	1.37	1.50	1.65	1.73	1.95	2.11	2.37	2.54	2.63
2.2	2.0	1.02	1.27	1.53	1.67	1.82	1.96	2.11	2.35	2.57	2.77	2.94
2.5	2.2	1.57	1.81	2.05	2.26	2.45	2.63	2.81	3.03	3.29	3.53	3.72

10

PARTS

10.1 For Tank Assembly



10

PARTS

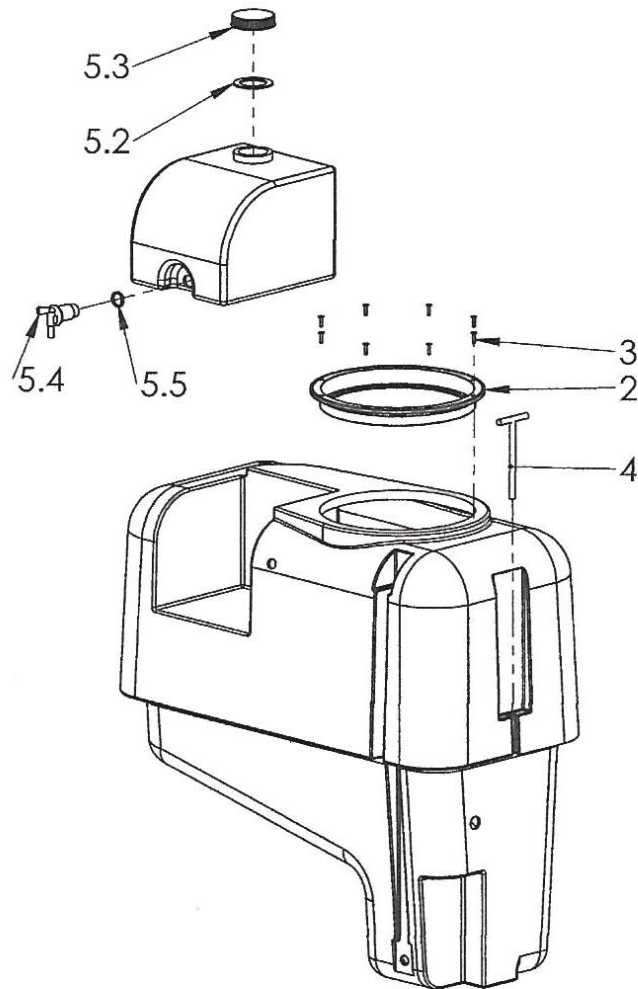
10.1 For Tank Assembly

<u>REF #</u>	<u>QTY.</u>	<u>PART NO.</u>	<u>DESCRIPTION</u>
1	1	0102438	Frame GC200 Z
2	2	AA00040	Lift Pin
3	1	0102244	Pin D.19
4	1	0600281	Tank 200 L
4A	1	0600273	Tank 400 L
5	1	2100001	Pin R 3
6	2	1700001	Gasket D.32 x 21 x 2
7	2	1400130	Elbow Fitting D.13 1/2
8	2	TE8042151	Nut 1/2"
9	2	1500030	Clamp Bif. A Spring 173 mm 16.8-17.7
10	2	1800168	Washer 23 x 39 UNI 6592 R 40 Galvanized
11	2	1800191	Nut Aut. High M12 Galvanized
12	1	3522040	Tank Lid D.355
13	1	TE8153000	Basket for Cover 355 H 60
14	1	2600009	Small Label Register
15	2	1800480	Rivet TT AL 3 x 10
16	1	0600052	Hose Vipla Crystal 12 x 17 L=780
17	1	1601018	Crystal Hose 10 x 16 L=150
18	1	TE8050301	Tank Outlet G 1" 1/4
19	1	TE8044301	Threaded Blanking Cap 1" 1/4
20	1	TE8042301	Ring Nut G 1" 1/4
21	1	1700011	Gasket D.40 x 25 x 4
22	1	1700015	Gasket 57.5 x 40 x 3

10

PARTS

10.1 For Tank Assembly

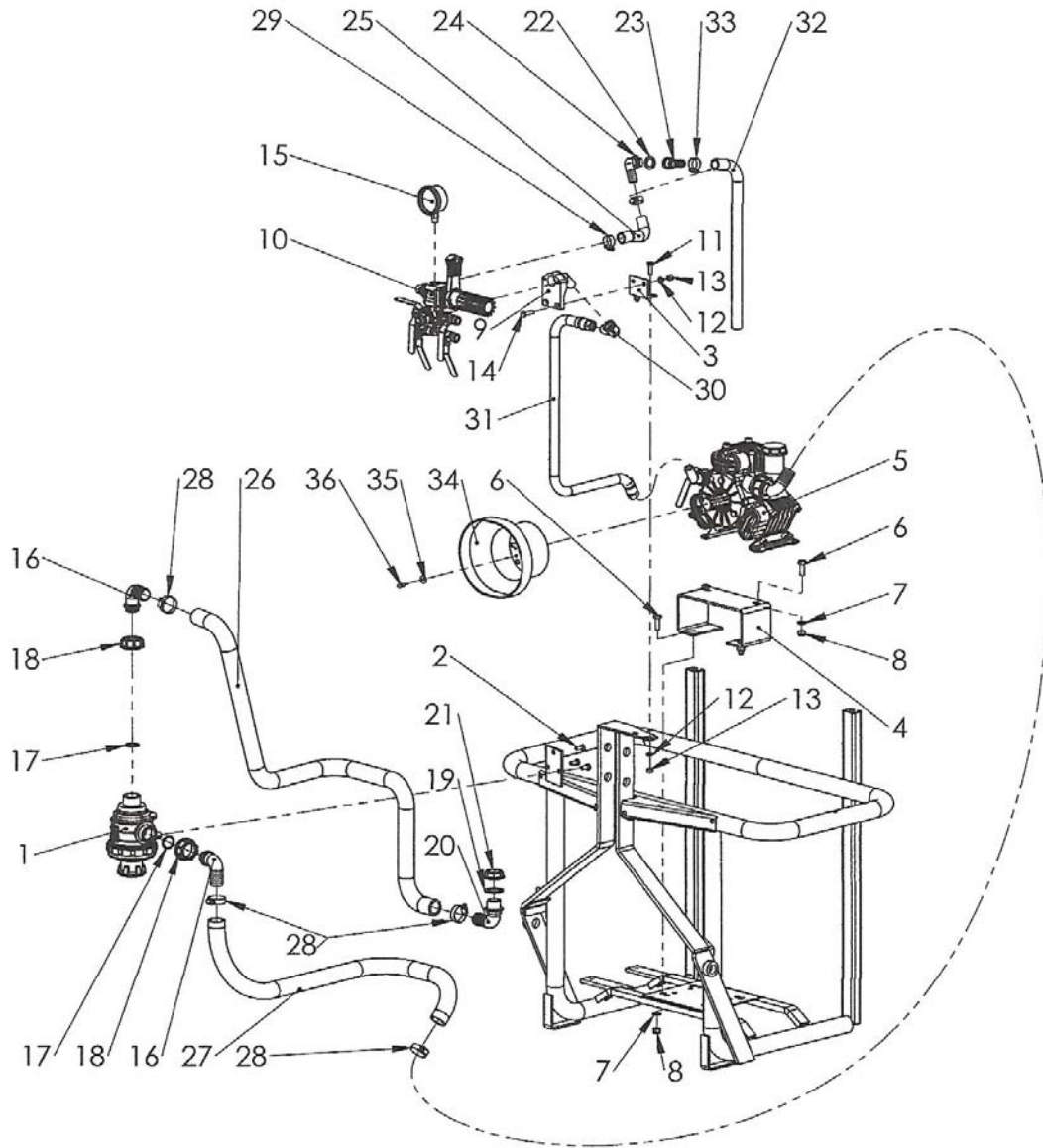


<u>REF #</u>	<u>QTY.</u>	<u>PART NO.</u>	<u>DESCRIPTION</u>
2	1	0600054	Threaded Ring for Lid D.355 - Flat Surfaces
3	8	1800351	Tear A Rivet 4.8 x 20 Aluminium
4	2	0600356	Tie Rod 90 x 80 x 100 H170
5	1	0600285	Tank Handwashing Illinois
5.2	1	0600188	Gasket Plug LC/LM
5.3	1	0600187	Tank Plug LC/LM
5.4	1	0600190	Handwashing Valve
5.5	1	0600191	Gasket Valve

10

PARTS

10.2 For Run of Fluids

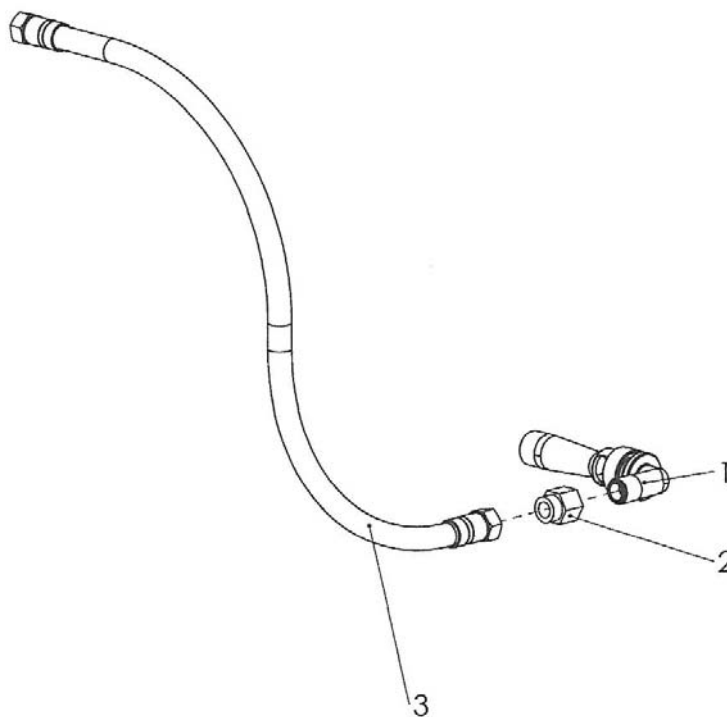


10.2 For Run of Fluids

<u>REF #</u>	<u>QTY.</u>	<u>PART NO.</u>	<u>DESCRIPTION</u>
1	1	AG3132453	Suction Filter 1" 1/4 C/VALV FC 50M
2	3	1800020	Bolt TE M 8 x 16 UNI 5739-8.8 Galvanized
3	1	0103023	Valve Support Sting GC
4	1	0102990	Pump Support AR503-PA530 APL-G200
5	1	AR503	Pump PA530 VM SV
6	4	1800037	Bolt TE UNI 5739 8.8 10 x 30 Galvanized
7	4	1800130	Plain Washer UNI 5739 6592 M.10 Galvanized
8	4	1800186	Nut Aut. High Cl. 8 M 10 Galvanized
9	1	IB318911973	Remote Adjustable Kit 1/2"
10	1	AR30743	Pressure Regulator Sting 5W 40 Bar
11	2	1800025	Bolt TE UNI 5739 8.8 8 x 25 Galvanized
12	4	1800120	Flat Washer UNI 6592 M.8 Galvanized
13	4	1800180	Nut UNI 5587 Cl. 8 M 8 Galvanized
14	2	1800023	Bolt TE M 8 x 30 UNI 5739-8.8 Galvanized
15	1	0200055	Gauge 1/4" - 63 Inox 40 Bar 600 PSI
16	2	TE8012302	90° Hosetail D.30 for Fly Nut G1" 1/4
17	2	1700066	Or D.31 x 25 x 3
18	2	TE8040301	Ring Nut 1" 1/4
19	1	1700016	Gasket D.46 x 33 x 2
20	1	TE8011252	90° Hosetail D.30 Male Thread 1°
21	1	TE8042251	Back Nut 1"
22	1	1700001	Gasket D.32 x 21 x 2
23	1	TE8000152	Hosetail Female Thread D.19 G 1/2" F
24	1	TE8011153	90° Hosetail Male Thread 1/2" D.19
25	1	1601019	Hose S D.20 L=200
26	1	1600059	Hose A D.30 L=1200
27	1	1600059	Hose A D.30 L=1200
28	4	1500004	Clamp W2 25-40/12
29	2	1500003	Clamp W2 16-27/12
30	1	1300001	Brass Elbow MF 1/2-1/2
31	1	1600513	Hose Co. PVC 13 x 23 100 Bar L=1000
32	1	1601020	Hose S D.20 L=550
33	1	1500008	SS Clamp Inox AISI/304 21 x 38/12.7
34	1	IB311467322	Front Safety Cone
35	3	1800114	Washer 6 x 18 UNI 6593 R40 Galvanized
36	3	1800011	Bolt TE UNI 5739 8.8 6 x 16 Galvanized

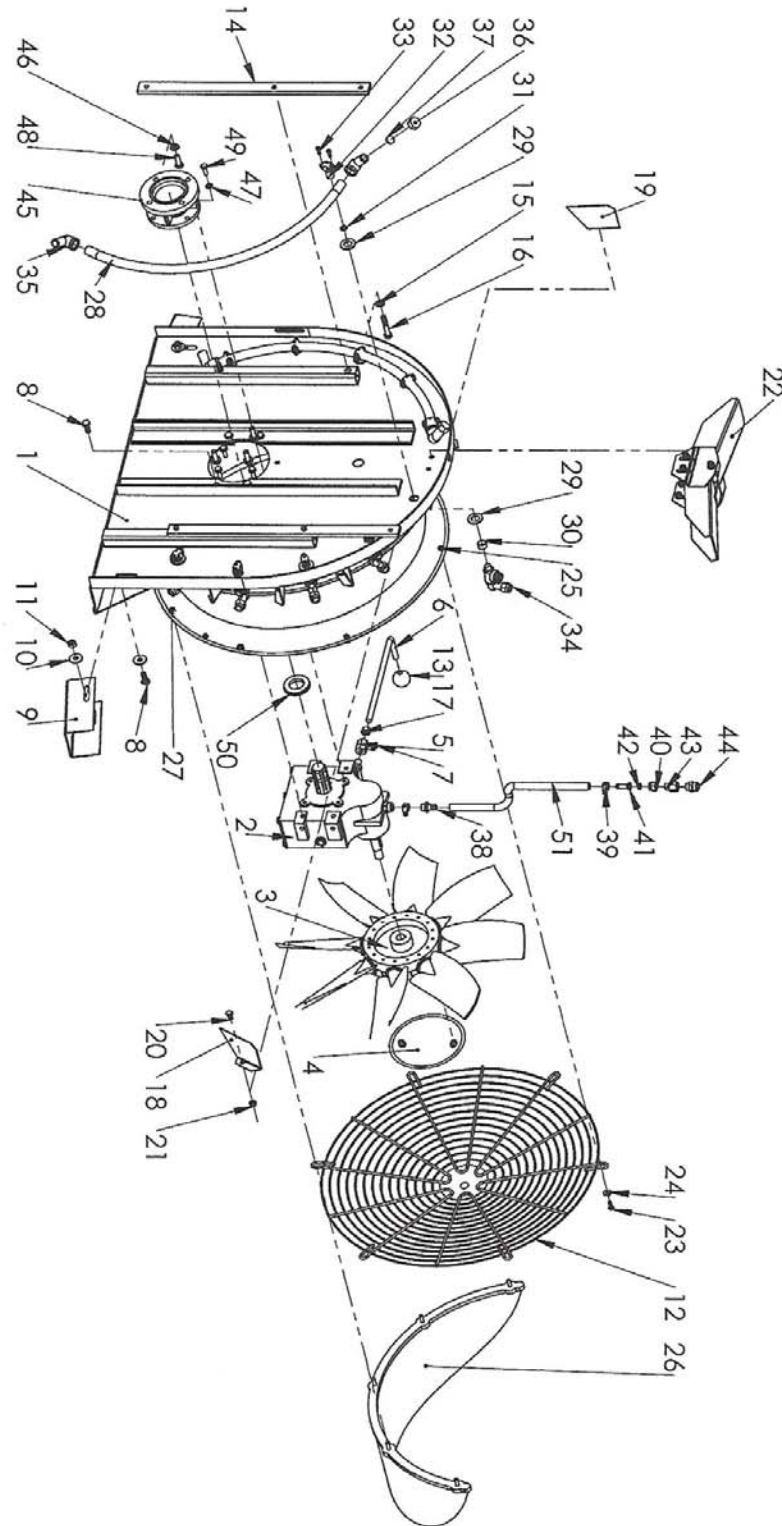
10 PARTS

10.2 For Run of Fluids



<u>REF #</u>	<u>QTY.</u>	<u>PART NO.</u>	<u>DESCRIPTION</u>
1	1	502010	Curved Hydraulic Agitator D.1.2
2	1	1300146	Extension Cylindrical MF 445 1/2" 1/2"
3	1	1600109	Hose Co. PVC 10 x 19 80 Bar L=600

10.3 Fan Assembly



10.3 Fan Assembly

<u>REF #</u>	<u>QTY.</u>	<u>PART NO.</u>	<u>DESCRIPTION</u>
1	1	0102527	Housing Z MOD600 AM-DW
2	1	CMVZMA501_31	Gearbox MA501/31 R. 1/4.07 D.20 mm 200 L
3	1	0102265	Fan Eli 185 D.590/8/30°/SX NV 200 L
4	1	0102255	Cover D.258 NV Black
5	1	0100253	Rallonge Kever CAR3
6	1	0100618	Coupler Lever CAR3/MOD700 MSA/MOD600
7	2	1801211	Bolt STEI M 6 x 8 UNI 5927-H45
8	6	1800237	Bolt TE M 10 x 25 A2 UNI 5739
9	2	0102189	Lateral Wing AP5-6-700
10	4	1800537	Plain Washer A2 M. 10 x 30
11	2	1800188	Nut M 10 UNI 5587 A2 PG10
12	1	0100776	Grill Diam. 600 Galvanized
13	1	1800413	Handle in Bakelite M 12 D.40 x 12
14	2	0101486	Conveyor Plate 30 x 8 L=560
15	4	1800173	Plain Washer 6592 A2 M.10
16	4	1800389	Bolt TE M 10 x 60 A2 UNI 5737
17	1	1800549	Nut M 12 UNI 5587 A2 PG10
18	4	0101470	Left Directional Wing 500-600-700
19	5	0101469	Right Directional Wing 500-600-700
20	8	1800353	Bolt TE M 8 x 16 A2 UNI 5739
21	8	1800367	Nut Aut. A2 M 8 DIN 982
22	1	2700031	Complete Top Wing APL (D.600)
23	5	1800471	Bolt TPSEI 6 x 20 A2
24	5	1800474	Washer M 6 x 18 FL. A2
25	5	1800182	Nut M 6 A2 UNI 5587
26	1	1400380	Trash-Shield Small with Insert
27	5	1800192	Nut M 8 A2 UNI 5587
28	2	2000049	SS Tube (5) D.20 x 1.2 L=720
29	12	1800548	Washer Plain UNI 6592 M. 18 A2
30	6	0101676	SS Spacer D.20 x 1.2 L=11
31	10	1700020	Or D.15.16 x 9.92 x 2.62
32	10	0800344	Clamp Diam.20 without Bolt and Gasket I
33	20	1800002	Bolt TCEI UNI 5931 A2 5 x 16
34	10	0800293	Nozzle Single Ant.M76 G.1/4M 11/6 UN SP
35	4	1300001	Brass Elbow MF 1/2-1/2
36	2	TE8304022	Female Plug G1/2"
37	2	1700021	Black Gasket 19 x 5
38	1	1300189	Cylindrical Hose Connector with O/Ring Seal 454 12 3/8"
39	2	1500036	Clamp Kale 10 x 16
40	1	0800071	Ring Nut Nozzle 3/8

Continued....

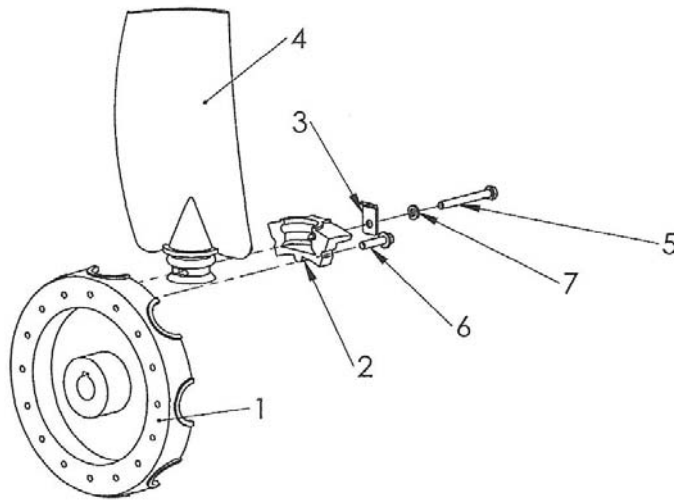
10

PARTS

10.3 Fan Assembly

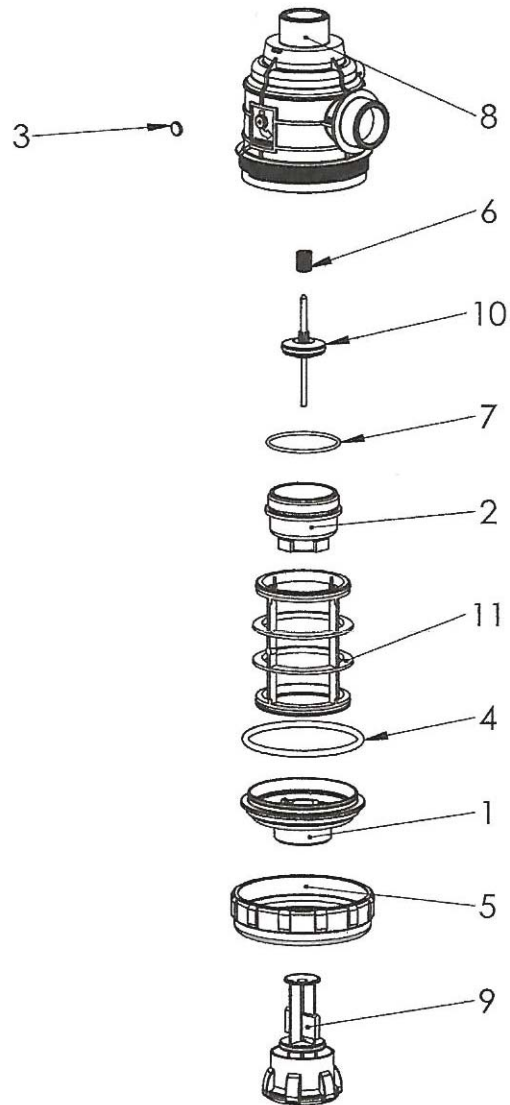
<u>REF #</u>	<u>QTY.</u>	<u>PART NO.</u>	<u>DESCRIPTION</u>
41	1	0101697	Hose Tail D.10 Plain
42	2	1700022	Gasket 10.5 x 15 x 2
43	1	1300158	Conical Extension MF 444 3/8" 3/8"
44	1	CMVTAPPOSFIATO 3_8	Breather 3/8"
45	1	0200329	Flange Gearbox 1V PA408-1108
46	4	1800130	Plain Washer UNI 6592 M.10 Galvanized
47	4	1800120	Plain Washer UNI 6592 M.8 Galvanized
48	4	1800037	Bolt TE UNI 5739 8.8 10 x 30 Galvanized
49	4	1800025	Bolt TE UNI 5739 8.8 8 x 25 Galvanized
50	1	CMV0MA5135	Centering Ring De 62 Hole 36 H 7.5
51	1	1600309	Hose PVC 10 x 17 50 Bar L=370

10.3 Fan Assembly



REF #	QTY.	PART NO.	DESCRIPTION
1	1	0102937	Hub Aluminium D.185 Hole D.185 Groove 6 H 45
2	8	0102939	Aluminium Block Blade Sector ELI 185
3	8	0102272	SS Inclination Lock for Hub D.185 and D.235
4	8	0102938	Blade Type 2 SX for Fan ELI 185 D.590/8 Black
5	8	1800052	Bolt TE M 6 x 55 UNI 5737-8.8 Galvanized
6	8	0102273	Screw Taptite II M 6 x 25 TE CR Galvanized
7	8	1800110	Washer Grower A 6.4 x 11.4 UNI 1751 Galvanized

10.3 Fan Assembly



<u>REF #</u>	<u>QTY.</u>	<u>PART NO.</u>	<u>DESCRIPTION</u>
1	1	AG3132400.020	Suction Filter Bowl 110 C/W Valve
2	1	AG3142400.070	Valve Body for Filter
3	1	AG3102003.012	Blue Cap 50M
4	1	AG314000.050	Or 5.34 x 91.44 6362 EPDM
5	1	AG314000.040	Back Nut for Filter "170"
6	1	AG314400.090	Valve Spring for Filter "170"
7	1	AG460000.190	Or 2.62 x 56.82 3225 EPDM
8	1	AG3142050.010	Filter Body 1"1/4 Short Thread
9	1	AG3142400.060	Compl. Filter Plug + Valve
10	1	AG3132400.080	Valve Plunger for Filter "110"
11	1	AG3182003.030	Filter Element 79 x 109 Blue 50M

10

PARTS

10.4 Pump Assembly

<u>REF #</u>	<u>QTY.</u>	<u>PART NO.</u>	<u>DESCRIPTION</u>
1	3	580360	Bolt
2	3	1040180	Retaining Washer
3	1	1986	Diaphragm Kit
3	3	620081	Diaphragm Viton (optional)
4	3	1300110	Sleeve
5	3	160230	Piston Ring
6	3	620120	Piston
7	3	380300	Pin, Connecting Rod
8	6	380080	Retainer Ring
9	3	1300140	Connecting Rod
10	1	1433	Relief Valve
11	2	1300120	Retainer Ring
12	1	47270	Circlip I70
13	1	55X70X8	Oil Seal
14	1	HK5520	Bearing
15	1	47252	Circlip I52
16	1	6205	Bearing
17	5	OR14178	O-Ring 14 x 1.78
18	1	1300020	Manifold Plate
⊕ 19	1	47125	Circlip E25
20	1	25X35X7	Oil Seal
21	1	1300270	O-Ring 126.67 x 2.62
22	2	OR60262	O-Ring 60 x 2.62
⊕ 23	6	880280	Bolt M6 x 18
⊕ 24	6	1040370	Bolt M6 x 22
25	1	1300030	Discharge Manifold
26	1	1500130	Shield, PTO
27	1	00.055.046	90 Degree Elbow D.18
28	1	OR1588262	O-Ring 15.54 x 2.62
29	1	680350	Bolt M8 x 35
30	3	OR1872262	O-Ring 18.72 x 2.62
31	1	1040690	Clip
⊕ 32	1	961340	Washer D.8.5
33	1	1040950	Cotter Pin
34	2	OR293	O-Ring 29 x 3
35	1	450120	Adapter 1" - 1 1/4"
⊕ 36	1	1300010	Housing, Pump
37	1	580060	Nut 1 1/4
38	1	580040	90 Degree Elbow D.30
39	4	200230	Bolt M10 x 45
40	4	640230	Bolt M10 x 60

Continued...

10.4 Pump Assembly

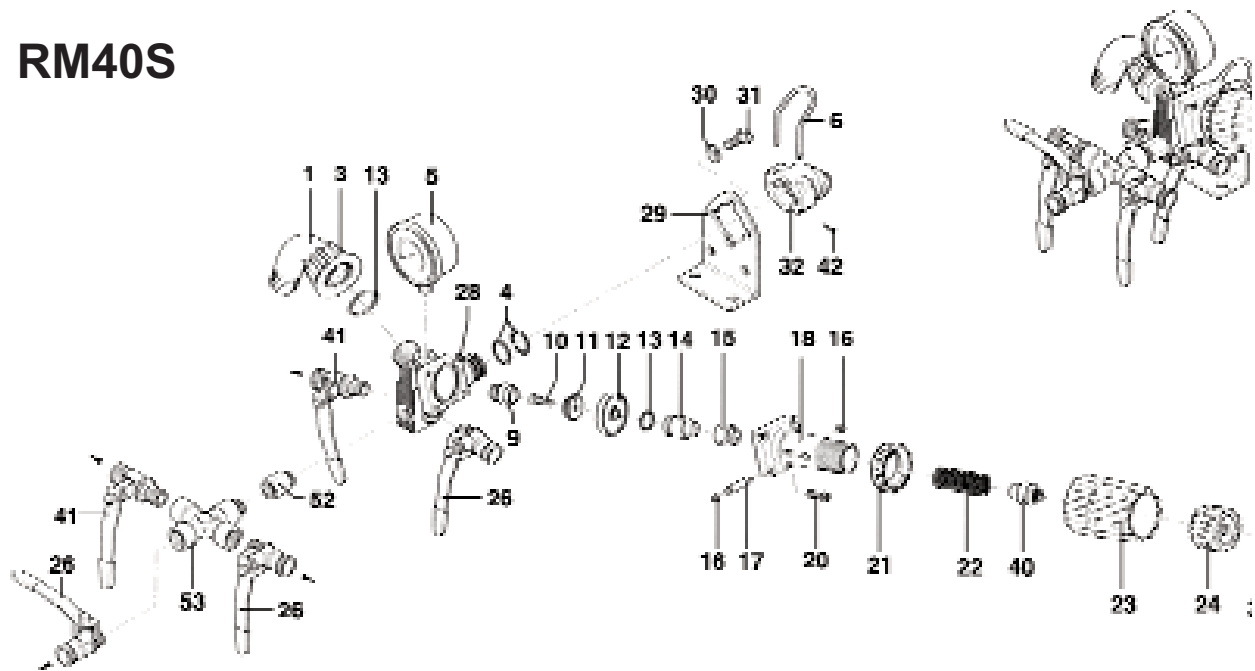
<u>REF #</u>	<u>QTY.</u>	<u>PART NO.</u>	<u>DESCRIPTION</u>
⊕ 41	6	OR1713262	O-Ring 17.13 x 2.62
42	2	1300101	Head, Pump R.H.
43	1	1300102	Head, Pump L.H.
44	1	1987	Valve Kit (includes Ref. #45 & 46)
⊕ 45	6	OR2580353	O-Ring 25.80 x 3.53
⊕ 46	6	OR3305178	O-Ring 33.05 x 1.78
47	3	1300190	Valve Head
48	6	620610	Bolt M8 x 30
49	1	1040322	Cap, Oil Bowl
⊕ 50	1	OR5364262	O-Ring 53.64 x 2.62
51	1	1040310	Oil Bowl
52	2	550331	Washer D.6.5
53	2	850850	Bolt M6 x 30
54	1	881560	Elbow
55	1	880530	Plug
56	1	770070	Plug, Allen Head
57	2	1300280	Spacer
58	2	1300090	Mount Bracket
59	4	1300360	Bolt M10 x 65
60	1	1518	PTO Adapter
61	1	1040760	Adapter
62	1	1300160	Crankshaft
63	1	650250	Key
64	1	881461	Adapter

⊕KIT 1984 O-RING KIT	
REF.	QTY.
17	6
21	1
22	2
30	3
34	2
41	6
45	6
46	6
50	1

10 PARTS

10.5 Valve Assembly

RM40S



<u>REF #</u>	<u>QTY.</u>	<u>PART NO.</u>	<u>DESCRIPTION</u>
1	1	550460	Elbow 18
3	1	550450	Nut Plastic 3/4" GAS
Δ● 4	7	390180	O-Ring 3075 18.72 x 2.62
5	1	550545	Pressure Gauge
● 6	1	1040690	Lockclip
● 9	1	1150520	Valve Seat
10	1	680560	Bolt, 6 x 15 Allen
● 11	1	1040640	Valve Seat
● 12	1	1040631	Diaphragm
Δ● 13	2	1988	O-Ring 3062 15.54 x 2.62
14	1	1040620	Piston
● 15	1	1150560	Spacer
16	2	1150600	Bushing
● 17	1	1150540	Roll Pin
18	1	1150510	Valve Body
20	4	780330	Bolt, 6 x 20 Allen
● 21	1	1150530	Control Nut
● 22	1	394760	Spring

Continued....

10

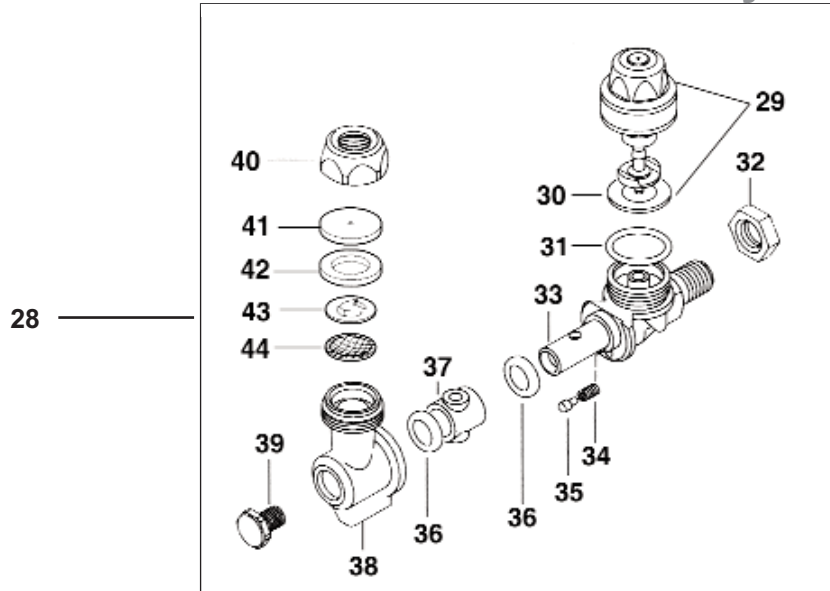
PARTS

10.5 Valve Assembly

<u>REF #</u>	<u>QTY.</u>	<u>PART NO.</u>	<u>DESCRIPTION</u>
●23	1	1150550	Control Knob
●24	1	1150570	Control Knob
26	3	130491	Ball Valve 3/8
28	1	1150500	Valve Body
29	1	1150590	Mounting Bracket
30	2	390311	Washer 8.5
31	2	180431	Bolt, 8 x 16
32	1	1040770	Fitting Pressure
37	1	480550	Circlip
38	1	1150650	Allen Bolt M3 x 60
40	1	1150660	Spacer
41	2	130492	Left Valve
42	1	1040950	Split Pin
52	1	1041210	Extension
53	1	1041220	Adapter

△ KIT 1988 O-RING		● KIT 1989 VALVE			
REF.	QTY.	REF.	QTY.	REF.	QTY.
390180	7	390180	4	1150530	1
880830	2	394760	1	1150540	1
		480550	1	1150550	1
		880830	1	1150560	1
		1040630	1	1150570	1
		1040640	1	1150650	1
		1040690	1	1150660	1
		1150520	1		

10.6 Nozzle Assembly

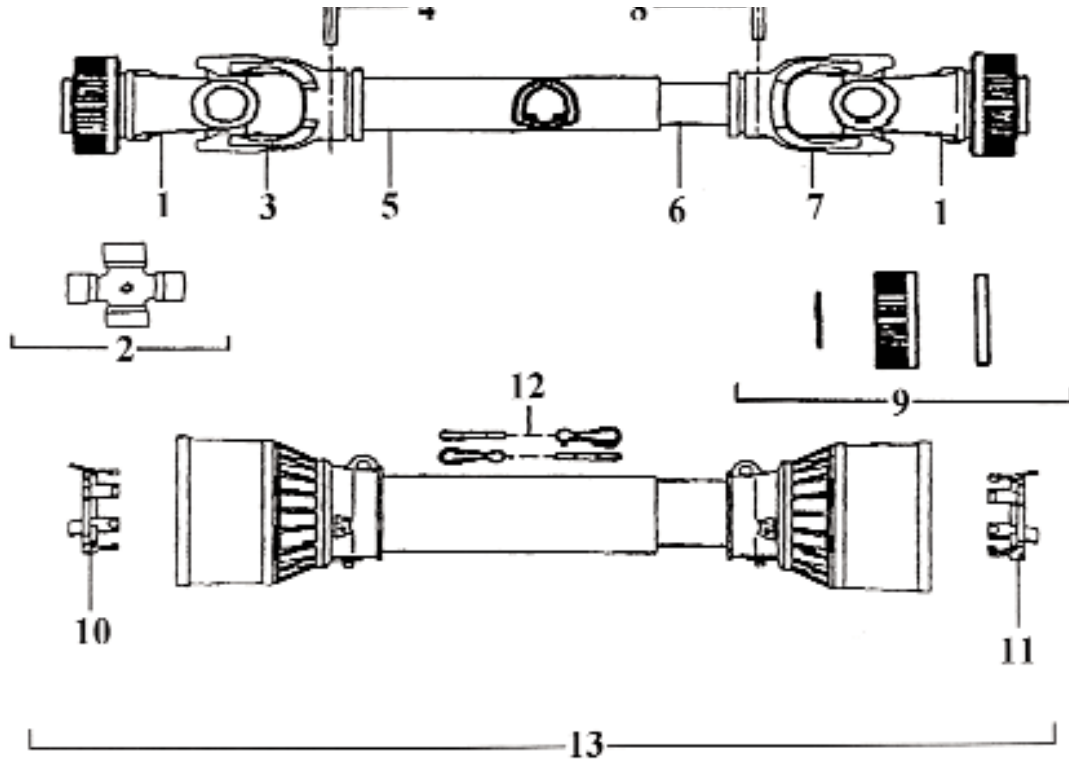


<u>REF #</u>	<u>QTY.</u>	<u>PART NO.</u>	<u>DESCRIPTION</u>
28	8	0800293	Nozzle Assembly
29	1	75.1007.8	Anti-drip Assembly
30	1	300.1006.3	Diaphragm
31	1	75.602.40	O-Ring
32	1	75.301.23	Nut 3/8" BSP GAS
33	1	75.208.126	Body
34	1	75.1003.23	Spring
35	1	75.507.9	Screw
36	2	73.602.22	Gasket
37	1	73.209.1	Slip Body
38	1	76.107.15	Adjustable Body 018 (includes #62)
39	1	75.1902.24	End Screw
40	1	75.605.47	Nut 018
41	1	0800327	Ceramic Disc .8 - 15 mm Digmate
41	1	0800323	Ceramic Disc 1.0 - 15 mm Digmate
41	1	0800326	Ceramic Disc 1.2 - 15 mm Digmate
41	1	0800324	Ceramic Disc 1.5 - 15 mm Digmate
41	1	0800357	Ceramic Disc 1.8 - 15 mm Digmate
41	1	0800358	Ceramic Disc 2.0 - 15 mm Digmate
41	1	0800359	Ceramic Disc 2.3 - 15 mm Digmate
42	1	OR1078262	O-Ring
43	1	0800325	Swirl Plate Blind
43	1	0800360	Swirl Plate 1.2
43	1	0800361	Swirl Plate 1.5
43	1	0800362	Swirl Plate 1.8
44	1	02.311.010	Screen

10

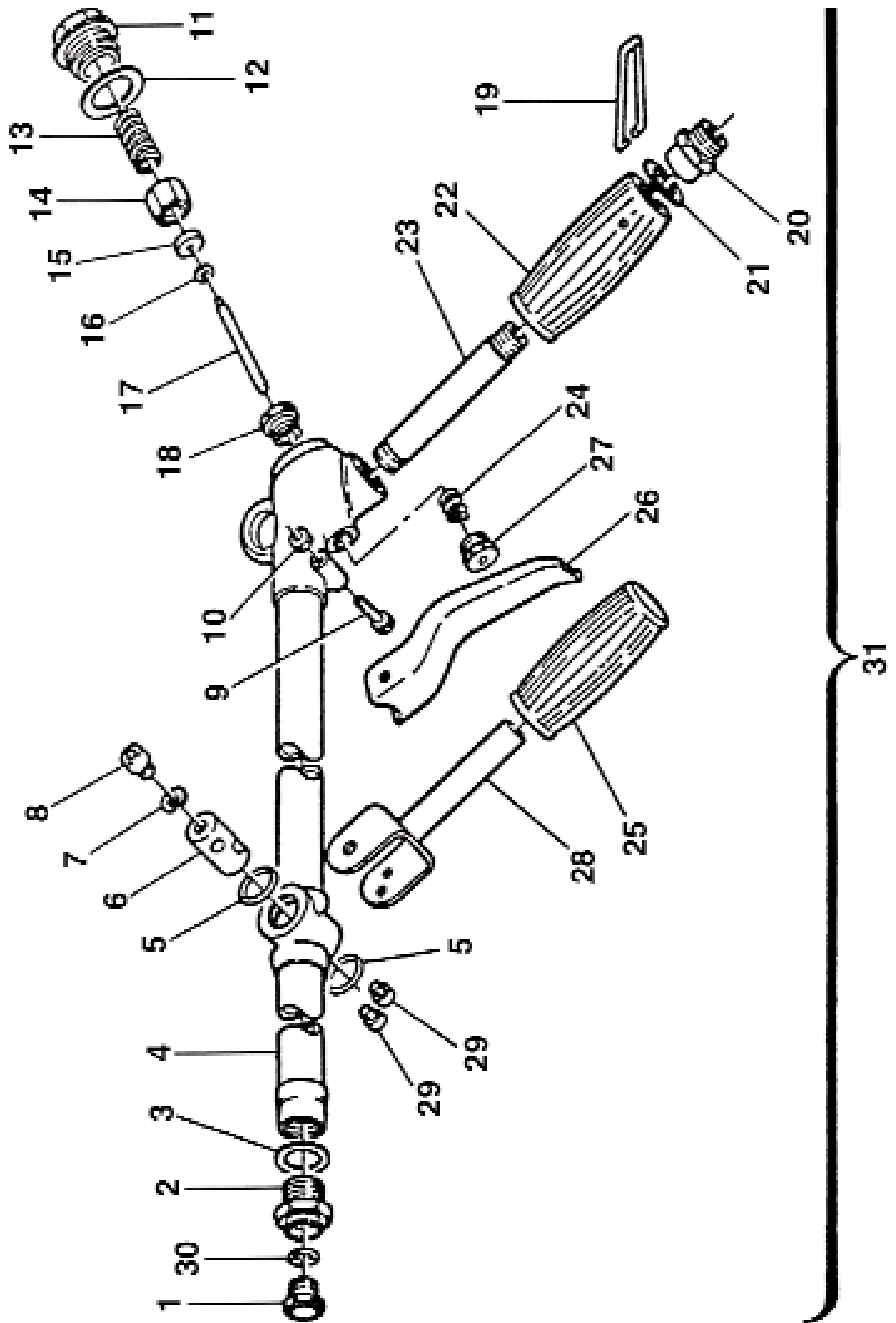
PARTS

10.7 Driveline Assembly 7104056FFT077



<u>REF #</u>	<u>QTY.</u>	<u>PART NO.</u>	<u>DESCRIPTION</u>
1	2	572040351	RS Yoke 1 3/8 6 Spline
2	2	41204R	#4 Cross Kit
3	1	204046851	Outer Tube Yoke
4	1	341038000	Roll Pin O.T.
5	1	225120860	Outer Drive Tube 860 mm
6	1	225100860	Inner Drive Tube 860 mm
7	1	204046852	Inner Tube Yoke
8	1	341048000	Roll Pin I.T.
9	2	240002451	RS Collar Kit
10	1	255040005	Shield Bearing Outer
11	1	255040006	Shield Bearing Inner
12	2	252000001	Safety Chain
13	1	5F04086F6	Complete Shield w/Bearings

10.8 Optional Tommy Gun (GHT)



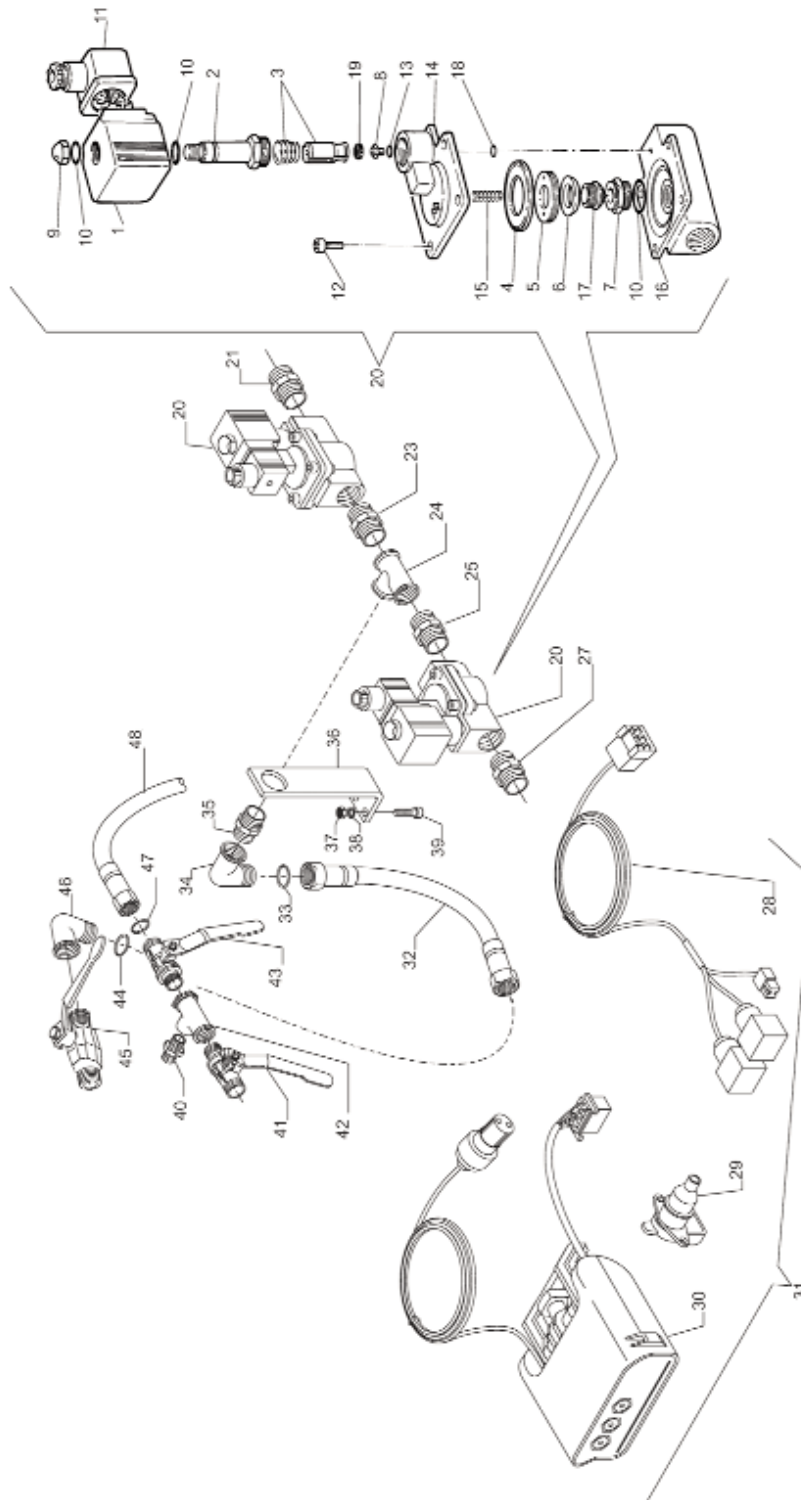
10

PARTS

10.8 Optional Tommy Gun (GHT)

<u>REF #</u>	<u>QTY.</u>	<u>PART NO.</u>	<u>DESCRIPTION</u>
1	1	0800080	Nozzle 1.5
1	1	0800081	Nozzle 1.8
1	1	0800082	Nozzle 2.0
1	1	0800083	Nozzle 2.8
1	1	0800084	Nozzle 3.0
1	1	0800085	Nozzle 3.5
2	1	0800086	Jet Support
3	1	0800087	Gasket
4	1	0800088	Body
5	2	0800089	Gasket
6	1	0800090	Bushing
7	1	0800091	Washer
8	1	0800092	Bolt
9	1	0800093	Bolt
10	1	0800094	Nut
11	1	0800095	Plug
12	1	0800096	Gasket
13	1	0800097	Spring
14	1	0800098	Nut
15	1	0800099	Washer
16	1	0800100	Washer
17	1	0800101	Pin
18	1	0800102	Nut
19	1	0800103	Spring
20	1	0800104	Plug
21	1	0800105	Gasket
22	1	0800106	Handle
23	1	0800107	Shaft
24	1	0800108	Gasket
25	1	0800109	Handle
26	1	0800110	Lever
27	1	0800111	Plug
28	1	0800112	Fork
29	2	0800113	Bolt
30	1	0800114	Gasket
31	1	GHT	Complete Handgun

10.9 Optional Electric Controls



10.9 Optional Electric Controls

<u>REF #</u>	<u>QTY.</u>	<u>PART NO.</u>	<u>DESCRIPTION</u>
1	1	OCLR73-952	Complete Coil
2	1	OCLR73-953	Fixed Core
3	1	OCLR73-954	Mobile Core
4	1	OCLR73-957	Viton Membrane
5	1	OCLR73-958	Plate
6	1	OCLR73-958A	Taper Gasket
7	1	OCLR73-959	Stainless Steel Seat
8	1	OCLR73-955	Nozzle
9	1	OCLR73-951	Cap Nut
10	1	OCLR73-709	O-Ring 2056
11	1	OCLR73-950	Connector
12	1	OCLR59-711	Screw
13	1	OCLR25-471	O-Ring 104
14	1	OCLR73-956	Cap
15	1	OCLR58-542	Spring for Anti-Drip
16	1	OCLR73-960	Body
17	1	OCLR73-961	Screw
18	1	OCLR1-2015	Ring OR 2015
19	1	OCLR73-954A	Gasket
20	2	0800285	Solenoid Electric Valve
21	1	1300021	Brass Nipple 1/2-1/2
23	1	1300021	Brass Nipple 1/2-1/2
24	1	1300106	Connector
25	1	1300021	Brass Nipple 1/2-1/2
27	1	1300021	Brass Nipple 1/2-1/2
29	1	SA-905048	Feeding Socket
31	1	0200017	Box Plt OCLL 2A+G Saver Pump C/C Masotti
32	1	1600303	Hose 10 x 19 80 Bar L=300 RA
33	1	1700010	Gasket 18 x 12 x 2 White
34	1	1300001	Brass Elbow MF 1/2-1/2
35	1	1300021	Brass Nipple 1/2-1/2
36	1	0101751	Support Electric Command
37	2	1800180	Nut M8 UNI 5587 6.8 Galvanized
38	2	1800120	Flat Washer UNI 6592 M.8 Galvanized
39	2	1800018	Bolt TCEI M8 x 20 UNI 5931 8.8 Galvanized
40	1	1300034	Nipple MM 3/8-3/8
41	1	1300010	Valve LH 1/2-5/8 A.5264
42	1	1300035	Connector 3/8-3/8-3/8
43	1	1300009	Cock RH 1/2-3/8 "Meteor" A.5263
44	1	1700010	Gasket 18 x 12 x 2 White
45	1	1300009	Cock RH 1/2-3/8 "Meteor" A.5263
46	1	1300001	Brass Elbow MF 1/2-1/2
47	1	1700010	Gasket 18 x 12 x 2 White
48	1	1600690	Hose Co. PVC 10 x 19 80 Bar L=1250

Limited Warranty



GEARMORE, INC., warrants each new Gearmore product to be free from defects in material and workmanship for a period of twelve (12) months from date of purchase to the original purchaser. This warranty shall not apply to implements or parts that have been subject to misuse, negligence, accident, or that have been altered in any way.

Our obligation shall be limited to repairing or replacement of any part, provided that such part is returned within thirty (30) days from date of failure to Gearmore through the dealer from whom the purchase was made, transportation charges prepaid.

This warranty shall not be interpreted to render us liable for injury or damages of any kind or nature, direct, consequential or contingent, to person or property. This warranty does not extend to loss of crops, loss because of delay in harvesting or any other expenses, for any other reasons.

Gearmore in no way warrants engines, tires, or other trade accessories, since these items are warranted separately by these respective manufacturers.

Gearmore reserves the right to make improvements in design or changes in specification at any time, without incurring any obligations to owners or units previously sold.

GEARMORE, INC.
13477 Benson Ave.
Chino, CA 91710

Always refer to and heed machine operating warning decals on machine.

*To validate the warranty on this product,
please go to our website - www.gearmore.com.
You will find "Warranty Registration"
listed at the top of our home page.*