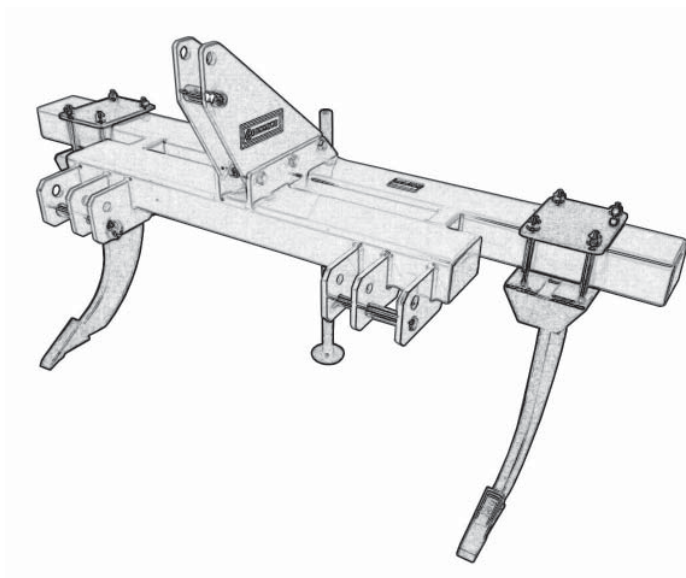


**GEARMORE INC.**

# **TIRE TRACK RIPPERS**



**Operation, Service,  
& Parts Manual  
For Model R2 SERIES**

**December 2012**

# TABLE OF CONTENTS

<b>SECTION</b>	<b>DESCRIPTION</b>	<b>PAGE</b>
<b>1</b>	<b>Introduction .....</b>	<b>1</b>
<b>2</b>	<b>Safety.....</b>	<b>2</b>
2.1	General Safety .....	3
2.2	Equipment Safety Guidelines .....	4
2.3	Safety Training .....	5
2.4	Operational Safety.....	5
2.5	Transport Safety .....	6
2.6	Storage Safety .....	6
2.7	Maintenance Safety .....	6
<b>3</b>	<b>Assembly.....</b>	<b>7</b>
<b>4</b>	<b>Replacement Parts.....</b>	<b>8 - 9</b>
4.1	Tire Track Ripper Assembly .....	8
4.2	Tire Track Ripper Assembly Parts List.....	9
<b>5</b>	<b>Limited Warranty.....</b>	<b>10</b>

# 1 INTRODUCTION

We welcome you as an owner of a Gearmore Tractor Tire Track Ripper. Please read the following instructions and refer to them when required.

With normal maintenance you should receive years of use out of the ripper.

**OPERATOR ORIENTATION** - The directions left, right, front and rear, as mentioned throughout this manual, are as seen from the driver's seat and facing in the direction of travel.

DATE OF PURCHASE: \_\_\_\_\_

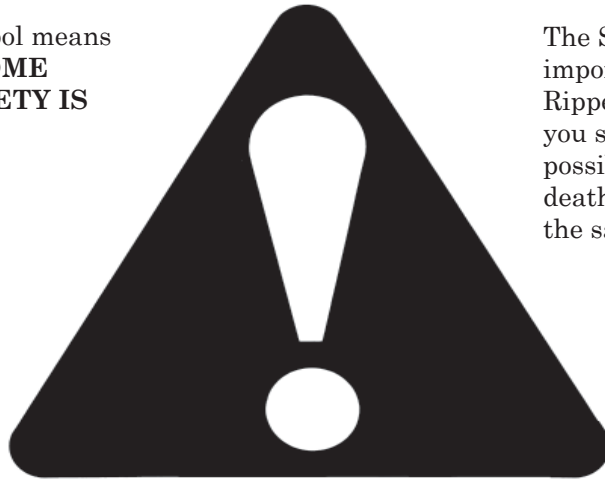
MODEL NUMBER: \_\_\_\_\_

SERIAL NUMBER: \_\_\_\_\_

## 2 SAFETY

### SAFETY ALERT SYMBOL

This Safety Alert symbol means **ATTENTION! BECOME ALERT! YOUR SAFETY IS INVOLVED!**



The Safety Alert symbol identifies important safety messages on the Ripper and in the manual. When you see this symbol, be alert to the possibility of personal injury or death. Follow the instructions in the safety message.

Why is SAFETY important to you?

#### 3 Big Reasons

**Accidents Disable and Kill**  
**Accidents Cost**  
**Accidents Can Be Avoided**

#### SIGNAL WORDS:

Note the use of the signal words **DANGER**, **WARNING** and **CAUTION** with the safety messages. The appropriate signal word for each message has been selected using the following guide-lines:

**SI NO LEE INGLES, PIDA AYUDA A AIGUIEN QUE SI LO LEA PARA QUE LE TRADUZCA LAS MIDIDAS DE SEGURIDAD.**

**DANGER** - Indicates an imminently hazardous situation that, if not avoided, will result in death or serious injury. This signal word is to be limited to the most extreme situations typically for machine components which, for functional purposes, cannot be guarded.

**WARNING** - Indicates a potentially hazardous situation that, if not avoided, could result in death or serious injury, and includes hazards that are exposed when guards are removed. It may also be used to alert against unsafe practices.

**CAUTION** - Indicates a potentially hazardous situation that, if not avoided, may result in minor or moderate injury. It may also be used to alert against unsafe practices.

If you have any questions not answered in this manual or require additional copies or the manual is damaged, please contact your dealer.

## 2.1 GENERAL SAFETY

**YOU** are responsible for the **SAFE** operation and maintenance of your Ripper. **YOU** must ensure that you and anyone else who is going to operate, maintain or work around the Ripper be familiar with the operating and maintenance procedures and related **SAFETY** information contained in this manual. This manual will take you step-by-step through your working day and alerts you to all good safety practices that should be adhered to while operating the Ripper.

Remember, **YOU** are the key to safety. Good safety practices not only protect you, but also the people around you. Make these practices a working part of your safety program. Be certain that **EVERYONE** operating this equipment is familiar with the recommended operating and maintenance procedures and follows all the safety precautions. Most accidents can be prevented. Do not risk injury or death by ignoring good safety practices.

- Ripper owners must give operating instructions to operators or employees before allowing them to operate the machine, and at least annually thereafter per OSHA (Occupational Safety and Health Administration) regulation 1928.57.
- The most important safety feature on this equipment is a **SAFE** operator. It is the operator's responsibility to read and understand **ALL** Safety and Operating instructions in the manual and to follow these. Most accidents can be avoided.
- A person who has not read and understood all operating and safety instructions is not qualified to operate the machine. An untrained operator exposes himself and bystanders to possible serious injury or death.
- **DO NOT** modify the equipment in any way. Unauthorized modification may impair the function and/or safety and could affect the life of the equipment.
- **Think SAFETY! Work SAFELY!**

1. Read and understand the Operator's Manual and all safety signs before operating, maintaining or adjusting the ripper



2. Have a first-aid kit available for use should the need arise and know how to use it.

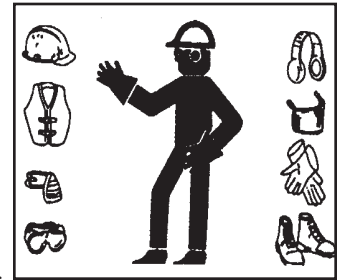


3. Have a fire extinguisher available for use should the need arise and know how to use it.



4. Wear appropriate protective gear. This list includes but is not limited to:

- A hard hat
- Protective shoes with slip resistant soles
- Protective goggles, glasses or face shield
- Heavy gloves
- Protective clothing



5. **DO NOT** allow riders.

6. Wear suitable ear protection for prolonged exposure to excessive noise.



7. Place all controls in neutral, stop tractor engine, set park brake, remove ignition key and wait for all moving parts to stop before servicing, adjusting, repairing, or unplugging.

8. Clear the area of people, especially small children, before starting.

10. Review safety related items annually with all personnel who will be operating or maintaining the Ripper.

## 2.2 EQUIPMENT SAFETY GUIDELINES

Safety of the operator and bystanders is one of the main concerns in designing and developing a machine. However, every year many accidents occur which could have been avoided by a few seconds of thought and a more careful approach to handling equipment. You, the operator, can avoid many accidents by observing the following precautions in this section. To avoid personal injury or death, study the following precautions and insist those working with you, or for you, follow them.

- **NEVER** use alcoholic beverages or drugs which can hinder alertness or coordination while operating this equipment. Consult your doctor about operating this machine while taking prescription medications.
- **Under no circumstances should young children be allowed to work with this equipment. Do not allow persons to operate or assemble this unit until they have read this manual and have developed a thorough understanding of the safety precautions and of how it works.** Review the safety instructions with all users annually.
- This equipment is dangerous to children and persons unfamiliar with its operation. The operator should be a responsible, properly trained and physically able person familiar with farm machinery and trained in this equipment's operations. If the elderly are assisting with farm work, their physical limitations need to be recognized and accommodated.

- Use a tractor equipped with a Roll Over Protective Structure (ROPS) and a seat belt.
- **NEVER** exceed the limits of a piece of machinery. If its ability to do a job, or to do so safely, is in question - **DON'T TRY IT.**
- Do not modify the equipment in any way. Unauthorized modification may impair the function and/or safety and could affect the life of the equipment.


In addition to the design and configuration of this implement, including Safety Signs and Safety Equipment, hazard control and accident prevention are dependent upon the awareness, concern, prudence and proper training of personnel involved in the operation, transport, maintenance and storage of the machine. Refer also to Safety Messages and operation instruction in each of the appropriate sections of the tractor and machine manuals. Pay close attention to the Safety Signs affixed to the tractor and the machine.


**Think SAFETY! Work SAFELY!**



**WARNING:**

**Turning with shanks in the ground will cause damage to the shanks and frame and thus void the warranty.**

 **WARNING**



Before operating your machine, stop and read this owners manual. Do not attempt to operate the unit until you fully understand the material covered in this manual. Without the knowledge contained in this manual, injury or death can result.

## 2.3 SAFETY TRAINING

Safety is a primary concern in the design and manufacture of our products. Unfortunately, our efforts to provide safe equipment can be wiped out by a single careless act of an operator or bystander.

In addition to the design and configuration of equipment, hazard control and accident prevention are dependent upon the awareness, concern, prudence and proper training of personnel involved in the operation, transport, maintenance and storage of this equipment.

It has been said, "*The best safety feature is an informed, careful operator.*" We ask you to be that kind of an operator. It is the operator's responsibility to read and understand ALL Safety and Operating instructions in the manual and to follow these. Accidents can be avoided.



Working with unfamiliar equipment can lead to careless injuries. Read this manual, and the manual for your tractor, before assembly or operating, to acquaint yourself with the machines. If this machine is used by any person other than yourself, or is loaned or rented, it is the machine owner's responsibility to make certain that the operator, prior to operating:

- a. Reads and understands the operator's manuals.
- b. Is instructed in safe and proper use.

Should ownership of the equipment be transferred, this manual must also be transferred.

Know your controls and how to stop tractor, engine and machine quickly in an emergency. Read this manual and the one provided with your tractor.

Train all new personnel and review instructions frequently with existing workers. Be certain only a properly trained and physically able person will operate the machinery. A person who has not read and understood all operating and safety instructions is not qualified to operate the machine. An untrained operator exposes himself and bystanders to possible serious injury or death. If the elderly are assisting with farm work, their physical limitations need to be recognized and accommodated.

For any part of this manual that you do not understand, contact your dealer or Gearmore, Inc.

## 2.4 OPERATIONAL SAFETY

1. Read the operator's manual before using any equipment.
2. **NEVER** allow children to operate tractor and Ripper or other power equipment.
3. Know how to stop the tractor quickly in the event of an emergency.
4. Instruct children and other persons to stay away from the tractor and Ripper when it is in operation.
5. **ALWAYS** remove the key when leaving the tractor unattended.
6. **NEVER** allow Ripper to be left in the "up" position when unattended.
7. Give complete undivided attention to the job at hand.
8. **NEVER** allow riders.
9. Stop the engine when dismounting from the tractor.
10. Use caution when operating the tractor on uneven terrain. Decrease speed when making turns. Use front and rear wheel weights as required.
11. Add sufficient amount of weight to front end of tractor to prevent wheels from coming off the ground when starting suddenly with a load.

## 2.5 TRANSPORT SAFETY

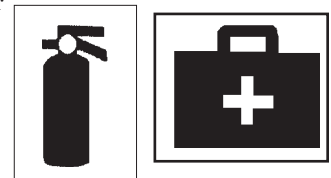
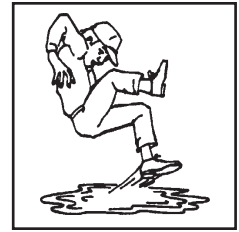
1. Comply with state and local laws governing highway safety and movement of farm machinery on public roads.
2. The use of flashing amber lights is acceptable in most localities. However, some localities prohibit their use. Local laws should be checked for all highway lighting and marking requirements.
3. At all times, when driving the tractor and equipment on the road or highway under 20 mph (32 kph) use flashing amber warning lights and a slow moving vehicle (SMV) identification emblem. Do not exceed 20 mph (32 kph). Reduce speed on rough roads and surfaces.
4. Plan your route to avoid heavy traffic.
5. Always install transport locks, pins, or brackets before transporting.
6. Do not drink and drive.
7. Be a safe and courteous driver. Always yield to oncoming traffic in all situations, including narrow bridges, intersections, etc. Watch for traffic when operating near or crossing roadways.
8. Turn into curves or go up or down hills only at a low speed and at a gradual steering angle. Make certain that at least 20% of the tractor's weight is on the front wheels to maintain safe steering. Slow down on rough or uneven surfaces.
9. Never allow riders on either tractor or machine.

## 2.6 STORAGE SAFETY

1. Store the unit in an area away from human activity.
2. Do not permit children to play on or around the stored machine.
3. Store the unit in a dry, level area. Support the frame with planks if required.

## 2.7 MAINTENANCE SAFETY

1. Good maintenance is your responsibility. Poor maintenance is an invitation to trouble.
2. Follow good shop practices.
  - Keep service area clean and dry.
  - Be sure electrical outlets and tools are properly grounded.
  - Use adequate light for the job at hand.
3. Make sure there is plenty of ventilation. Never operate the engine in a closed building. The exhaust fumes may cause asphyxiation.
4. Before working on this machine, shut off the engine, set the brakes, and remove the ignition key.
5. Never work under equipment unless it is blocked securely.
6. Use personal protection devices such as eye, hand, and hearing protectors, when performing any service or maintenance work.
7. Where replacement parts are necessary for periodic maintenance and servicing, genuine factory replacement parts **must** be used to restore your equipment to original specifications. The manufacturer will not be responsible for injuries or damages caused by use of unapproved parts and/or accessories.
8. A fire extinguisher and first aid kit should be kept readily accessible while performing maintenance on this equipment
9. Periodically tighten all bolts, nuts and screws and check that all cotter pins are properly installed to ensure unit is in a safe condition.
10. When completing a maintenance or service function, make sure all bolts, nuts and screws are installed and tightened before placing unit in service.





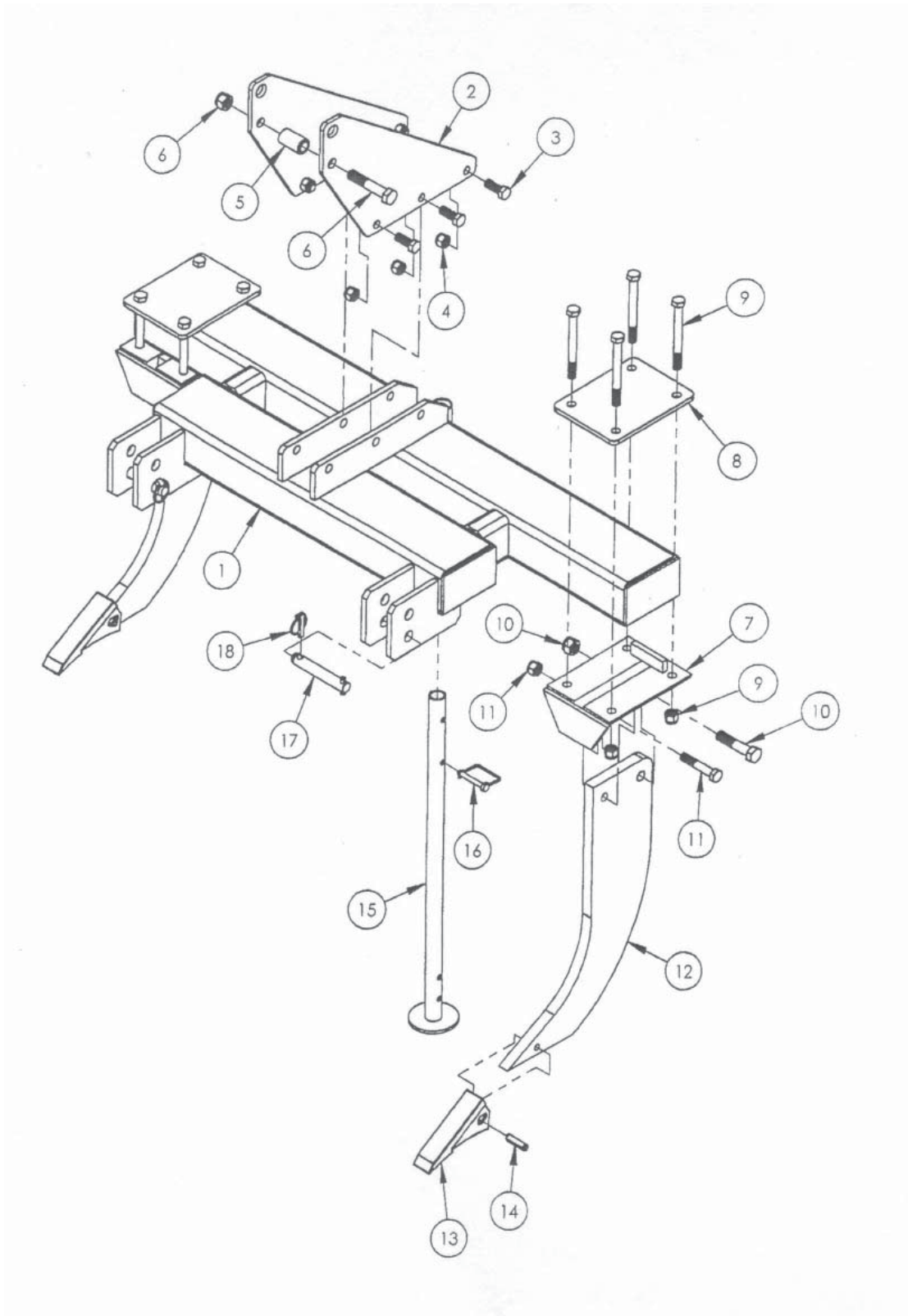
### 3 ASSEMBLY

With normal maintenance you should receive years of use out of the Ripper.

1. Inspect unit to make sure all bolts that hold the shank wing brackets are tight.
2. The shank retainer bolt and the shank shear bolt should not be over tightened. They only need to be tightened enough so that the special nyloc locknut will not back off. Over tightening will cause the mounting plate to squeeze the shank not allowing the shear bolt to shear properly.
3. When ripping, do not turn with the shanks in the ground. Doing so will cause damage to the shanks and frame.
4. Tractors having draft control on their 3-point should be adjusted so that the ripper operates properly when tough ground conditions arise. Review the tractor's operator's manual for correct settings.
5. Only replace shear bolts with grade 2 bolts. Using a higher grade bolt will only cause damage to the ripper or tractor.

# 4 TIRE TRACK RIPPER ASSEMBLY

## 4.1 TIRE TRACK RIPPER ASSEMBLY



## 4.2 PARTS LIST - TIRE TRACK RIPPER

<u>REF #</u>	<u>QTY.</u>	<u>PART NO.</u>	<u>DESCRIPTION</u>
1	1	R2-55-1001	R2-55 Frame Only
1	1	R2-67-1001	R2-67 Frame Only (Not Shown)
1	1	R2-72-1001	R2-72 Frame Only (Not Shown)
1	1	R2-96-1001	R2-96 Frame Only (Not Shown)
2	2	CP-0160-C	Top Link Plate
3	6	007-102-1	5/8" x 1 3/4" NC Gr. 5 Cap Screw
4	6	064-013-1	5/8" NC Nylock Nut
5	1	R330	Top Link Bushing
6	1	R331	3/4" x 4" NC Gr. 5 Cap Screw (With Nylock Nut)
7	2	R2-0200	Shank Pocket
8	2	R2-0300	Clamp Plate 3/8" x 8"
9	8	R315	5/8" x 6" NC Gr. 5 Cap Screw (With Nylock Nut)
10	2	R316	3/4" x 3 1/2" NC Gr. 5 Cap Screw (With Nylock Nut)
11	2	R317	5/8" x 3 1/2" NC Gr. 2 Cap Screw (With Nylock Nut)
12	2	R304	1" x 22" Shank Only
12	2	R305	1" x 22" Hardfaced Shank With Point (Not Shown)
13	2	VR8408	Pengo Point
13	2	VR8408HF	Hardfaced Pengo 210 Point (Not Shown)
14	2	VR8409	1/2" x 2" Roll Pin
15	1	PS-30	Pipe Stand
16	1	R313	Stand Pin
17	2	R307	Cat. 1 Lift Arm Pin
17	2	OE570332	Cat. 1 & 2 Lift Arm Pin For R2-72 & R2-96 (Not Shown)
18	2	R314	Lynch Pin
	2	R2-0500	Complete Shank Assembly (See Below)
	2	R325	Complete Shank With Point & Roll Pin

### PARTS INCLUDED WITH R2-0500 COMPLETE SHANK ASSEMBLIES

12	1	R304	1" x 22" Shank Only
13	1	VR8408	Pengo 210 Point
8	1	R2-0300	Clamp Plate 3/8" x 8"
7	1	R2-0200	Shank Pocket
14	1	VR8409	1/2" x 2" Roll Pin
9	4	R315	5/8" x 6" NC Gr. 5 Cap Screw (With Nylock Nut)
10	2	R316	3/4" x 3 1/2" NC Gr. 5 Cap Screw (With Nylock Nut)
11	2	R317	5/8" x 3 1/2" NC Gr. 2 Cap Screw (With Nylock Nut)30

## 5 LIMITED WARRANTY



GEARMORE, INC., warrants each new Gearmore product to be free from defects in material and workmanship for a period of twelve (12) months from date of purchase to the original purchaser. This warranty shall not apply to implements or parts that have been subject to misuse, negligence, accident, or that have been altered in any way.

Our obligation shall be limited to repairing or replacement of any part, provided that such part is returned within thirty (30) days from date of failure to Gearmore through the dealer from whom the purchase was made, transportation charges prepaid.

This warranty shall not be interpreted to render us liable for injury or damages of any kind or nature, direct, consequential or contingent, to person or property. This warranty does not extend to loss of crops, loss because of delay in harvesting or any other expenses, for any other reasons.

Gearmore in no way warrants engines, tires, or other trade accessories, since these items are warranted separately by these respective manufacturers.

Gearmore reserves the right to make improvements in design or changes in specification at any time, without incurring any obligations to owners or units previously sold.

Please be advised that all warranty work done by your dealer must be approved by Gearmore before work begins.

GEARMORE, INC.  
13477 Benson Ave.  
Chino, CA 91710

Always refer to and heed machine operating warning decals on machine.